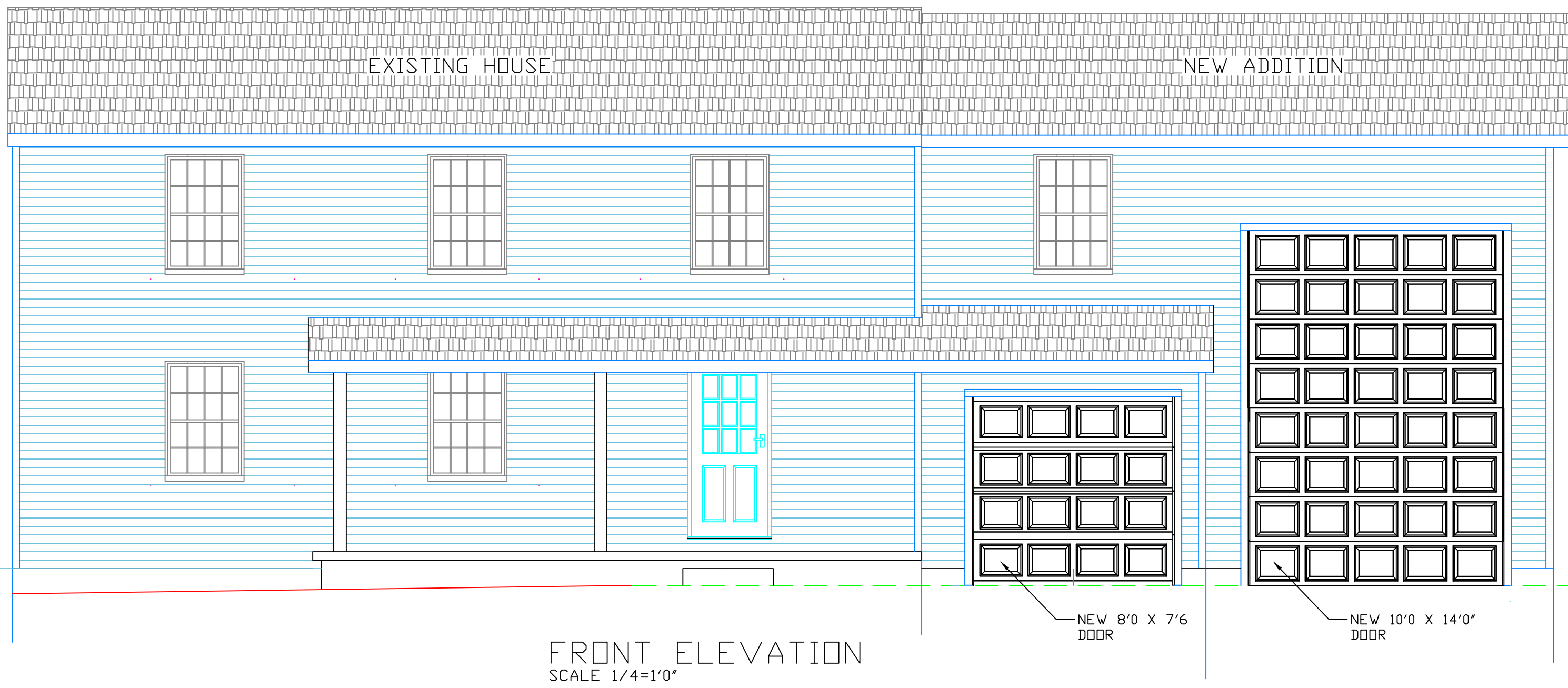


PLOT PLAN  
 SCALE 1"=20'

ADDITION FOR THE RAGGETS RESIDENT 1727 MAYFLOWER LN HUDSON, OH.		
SCALE 1"=20'	DRAWN BY Premier Decks	
DRAWING NUMBER		



NOTES:

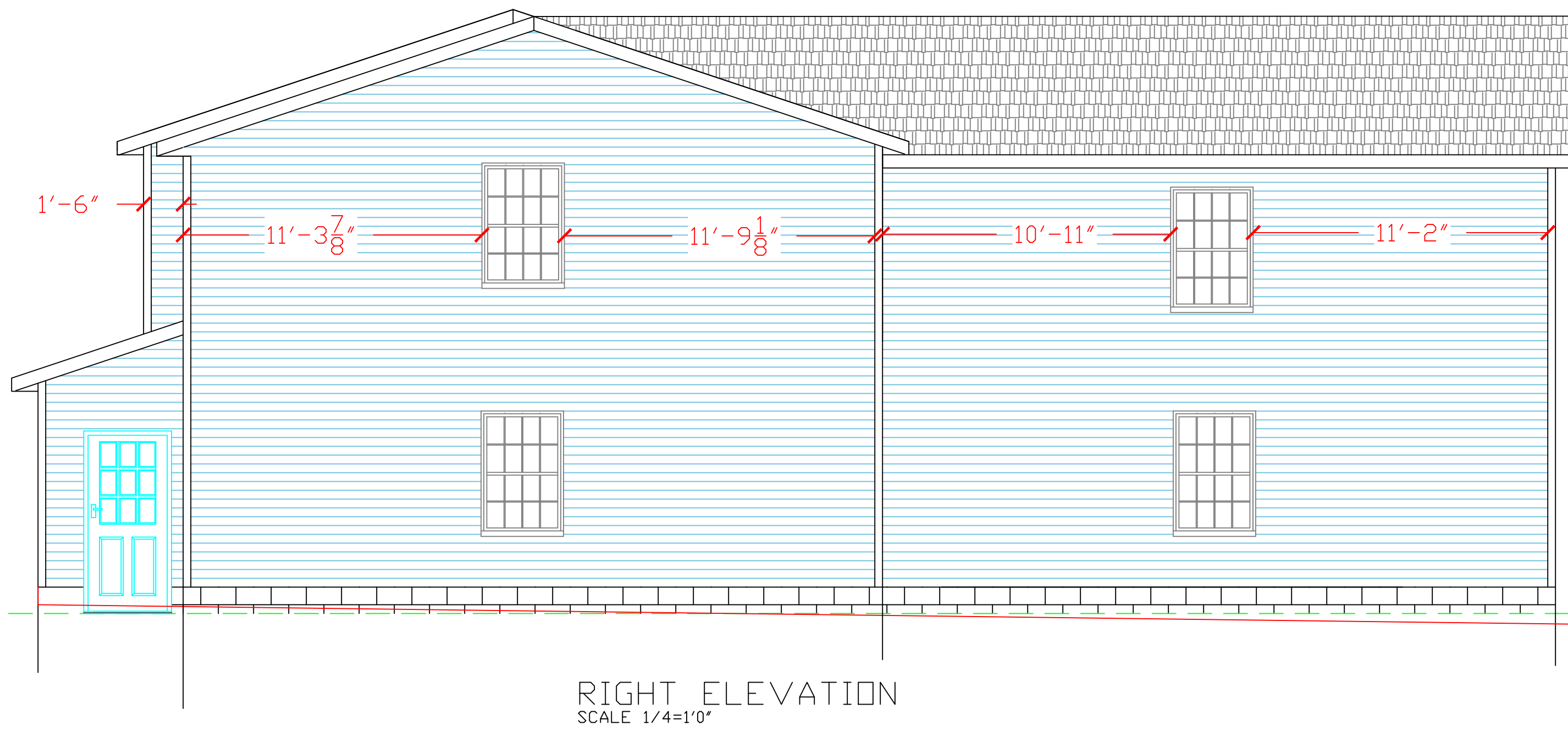
NEW WINDOWS TO MATCH EXISTING AS CLOSE AS POSSIBLE.

TRIM AROUND NEW WINDOWS TO MATCH EXISTING.

REMOVE AND REPLACE ALL ROOF SHINGLES

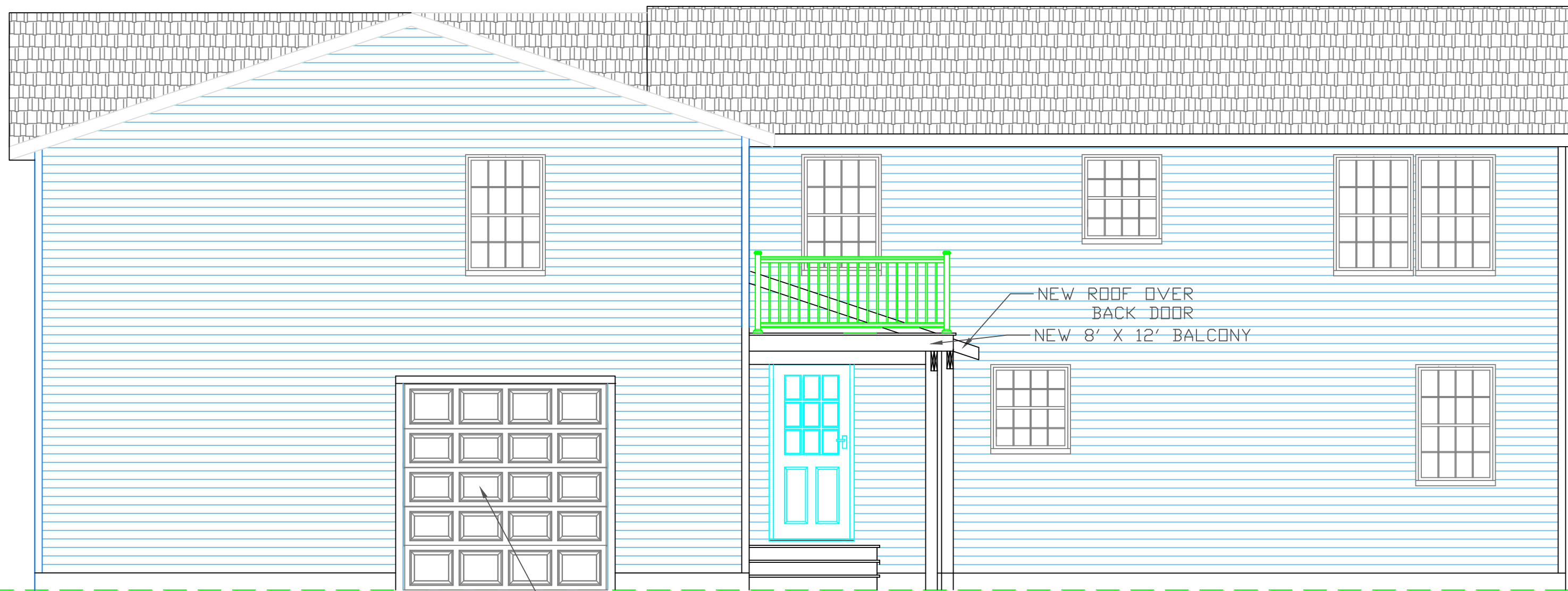
SIDING OPTION

INSTALL JAMES HARDIE FIBER CEMENT SIDING EXPOSURE TO MATCH EXISTING ON THE NEW ADDITION, AND PAINT ENTIRE HOUSE.



RIGHT ELEVATION  
SCALE 1/4"=1'0"

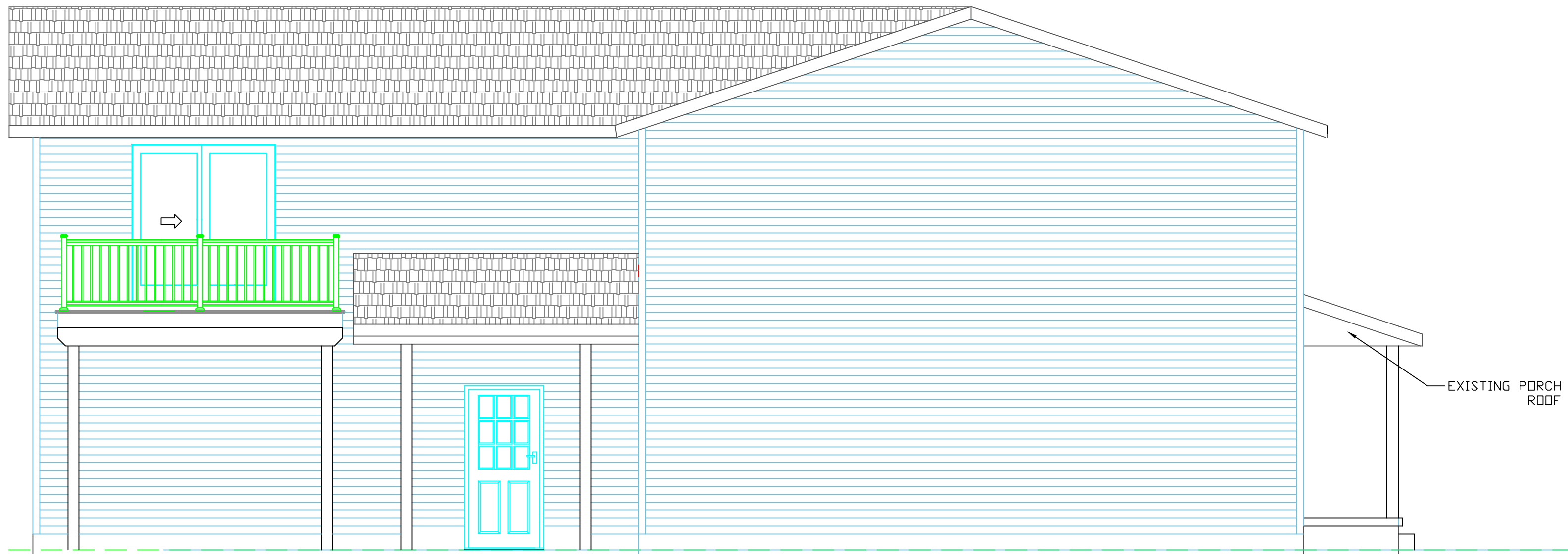
ADDITION FOR THE RAGGETS RESIDENT 1727 MAYFLOWER LN HUDSON, OHIO		
SCALE	1/4" = 1'0"	DRAWN BY JEFF RAGGETS
DRAWING NUMBER		1 OF 6



REAR ELEVATION  
SCALE 1/8"=1'0"

8' X 8' WHITE  
RAISED PANEL DOOR

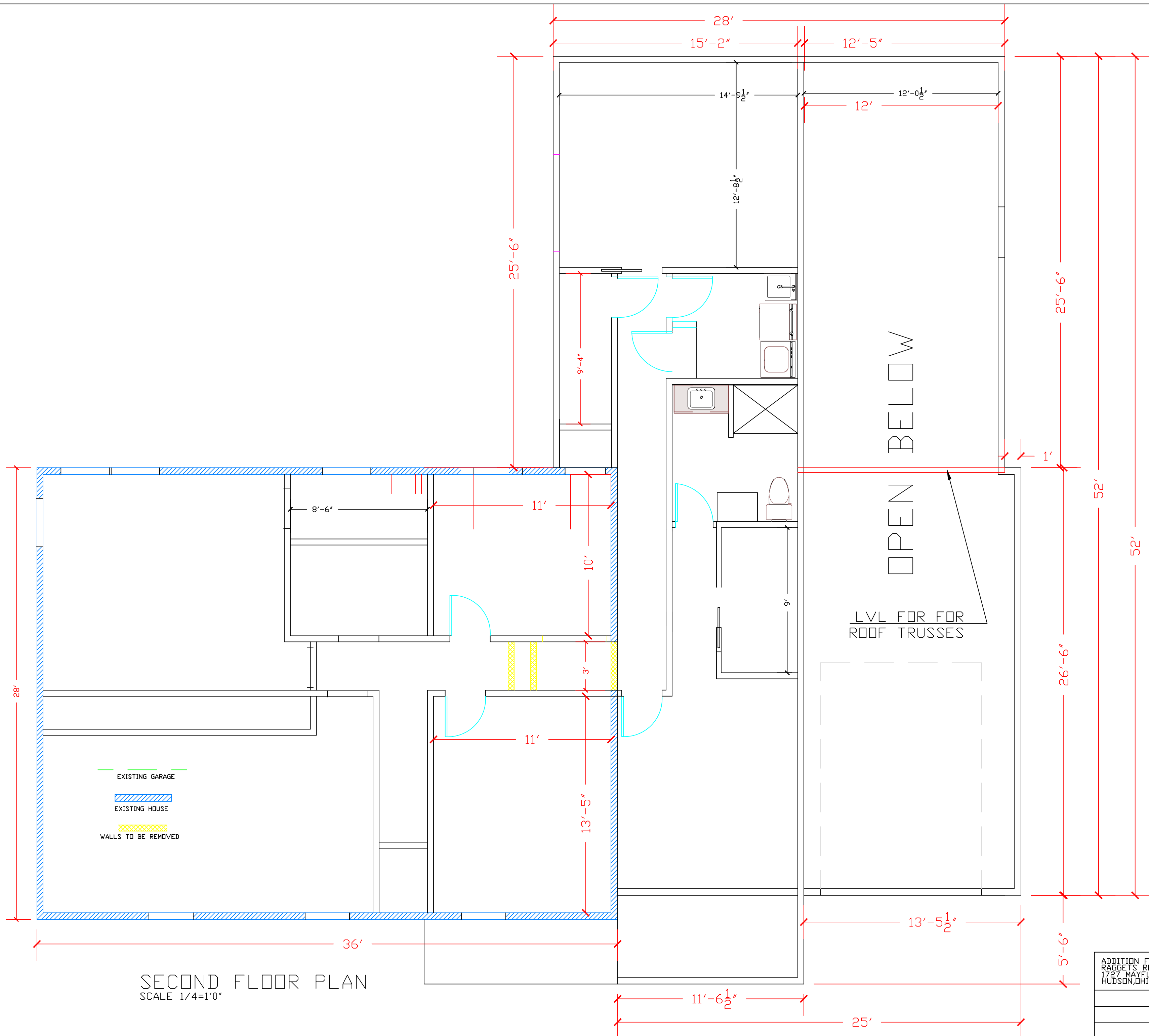
NEW ROOF OVER  
BACK DOOR  
NEW 8' X 12' BALCONY



LEFT ELEVATION  
SCALE 1/4"=1'0"

EXISTING PORCH  
ROOF

ADDITION FOR THE RAGGETS RESIDENT 1727 MAYFLOWER LN HUDSON, OHIO		
SCALE	1/4" = 1'0"	DRAWN BY JEFF RAGGETS
DRAWING NUMBER		1 OF 6



SECOND FLOOR PLAN  
SCALE 1/4"=1'0"

ADDITION FOR THE RAGGETS RESIDENT 1727 MAYFLOWER LN HUDSON, OHIO		
SCALE	1/4" = 1'0"	DRAWN BY JEFF RAGGETS
		DRAWING NUMBER



# The highest-quality materials for your highest satisfaction.

## Unique Formulation HZ5® Substrate

Not all fiber cement is the same. The Hardie® HZ5® product formulation contains the highest-quality raw materials. Our unique formulation, combined with innovative product design and manufacturing processes, creates a substrate that is specifically engineered to resist moisture, cracking, shrinking and swelling, for increased durability and workability.

### Proprietary enhancements create durable Hardie® siding

#### Perfect balance of strength and workability

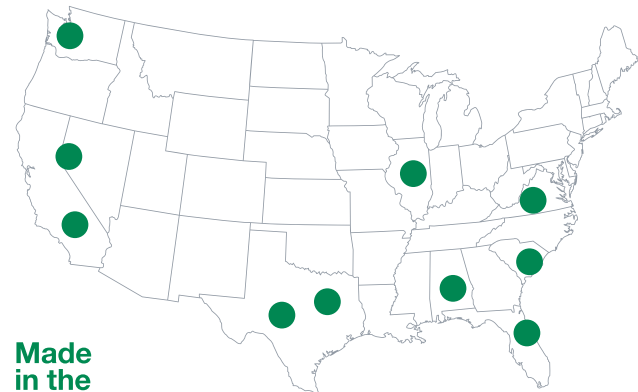
Our balance of high-quality Portland cement, sand and cellulose fiber delivers the best combination of strength and workability.

#### Enhanced moisture resistance for unmatched durability

Patented and proprietary additives are chemically bonded within the HZ5® substrate matrix to provide durable moisture resistance. In addition, Hardie® Plank in HZ5® substrates come with a drip edge to provide improved water management.

#### Increased dimensional stability

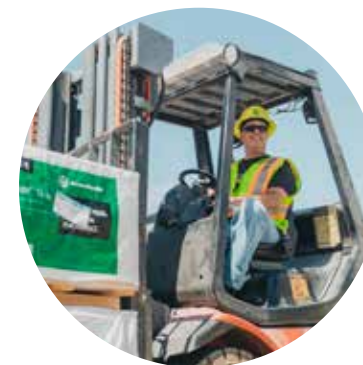
Our siding is engineered at the microscopic level to create a fiber cement composite with superior dimensional stability that helps protect against shrinking and splitting.



Made in the USA

● James Hardie Manufacturing Plant

10 manufacturing facilities in the United States which source 80% of their raw materials locally



### Unmatched investment in manufacturing scale and production innovation

- Largest manufacturer of fiber cement in North America
- Over 7x the North American manufacturing capacity of our nearest fiber cement competitors
- More than 100 process and product quality checks
- Over 95 scientists and engineers in R&D providing dedicated resources for continuous innovation in manufacturing and product development
- More U.S. fiber cement patents than any competitor

## STYLES

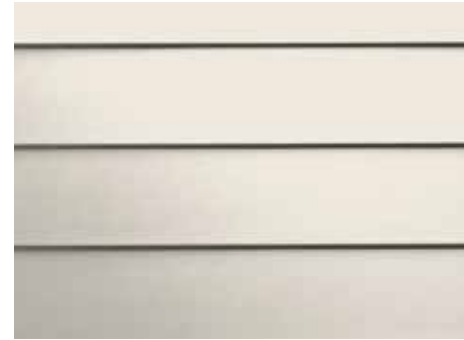
*find your perfect mix of exterior products*



**HARDIE® PANEL & HARDIE® TRIM BATTEN**



**HARDIE® SHINGLE**



**HARDIE® PLANK**



**HARDIE® TRIM**

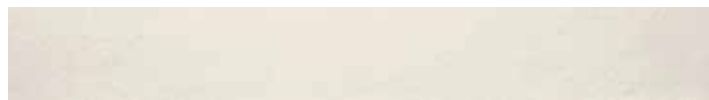


**HARDIE® SOFFIT**

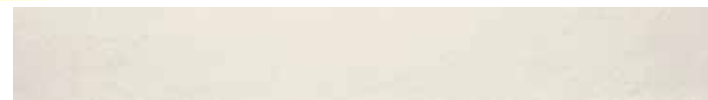
For more detailed product size and availability information, visit [jameshardie.com/magnolia](http://jameshardie.com/magnolia).

## TEXTURES

*choose the texture you prefer*



**HARDIE® TRIM SMOOTH**



**HARDIE® SIDING SMOOTH\***



**HARDIE® TRIM RUSTIC GRAIN**



**HARDIE® SIDING SELECT CEDARMILL\*\***

\* Textures available for siding and soffit.  
Hardie® Shingle only offered in Select Cedarmill®.

## DESIGN *the* HOME YOU'VE ALWAYS IMAGINED

Visualize Hardie® products on a 3D model of your home with HOVER® Design Studio, brought to you by James Hardie.

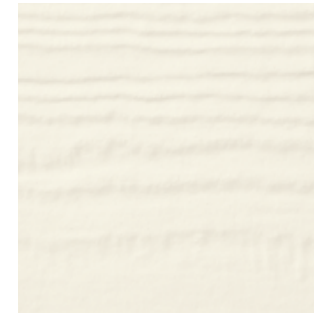
Every home tells a story. What will yours be? Start your free design.



VISUALIZE THE COLLECTION ON YOUR HOME

## COLORS

*select the hue that's right for you*



**BIRCH TREE**



**WEATHERED CLIFFS**



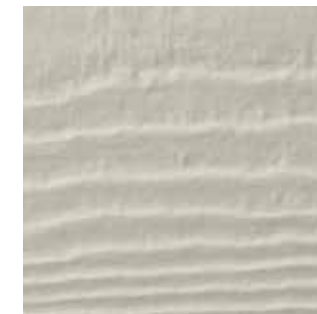
**RUSTIC ROAD**



**RUGGED PATH**



**IT'S ABOUT THYME**



**STONE BEACH**



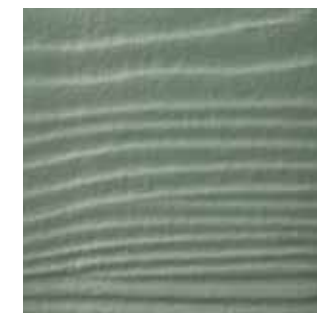
**STONE PAVER**



**WARM CLAY**



**DRIED EUCALYPTUS**



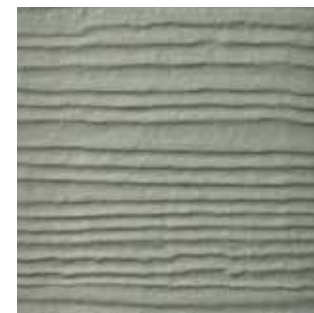
**CHISELED GREEN**



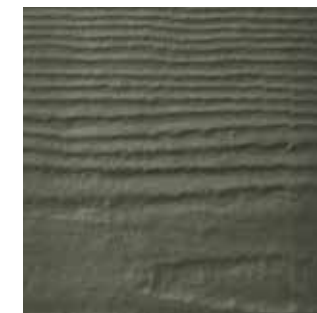
**WANDERING GREEN**



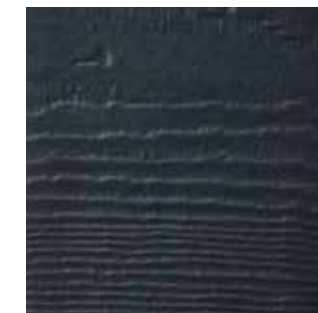
**MUDFLATS**



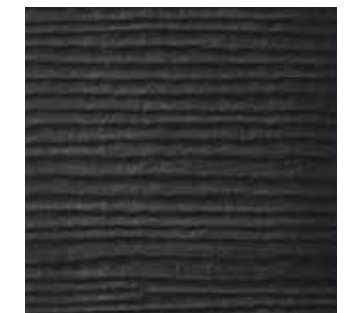
**SLATE STEPS**



**PEPPERY ASH**



**LAST EMBERS**



**MIDNIGHT SOOT**

All products in this collection come prefinished with ColorPlus® Technology finishes by James Hardie.



The main structure of the house, including the two-story main body and the attached one-car garage. The house has light beige horizontal siding and dark green shutters. The front porch has a white door and a small wooden chair. The garage has two white doors. The house number '1727' is visible on the porch pillar.







PASSPORT  
SL SERIES





