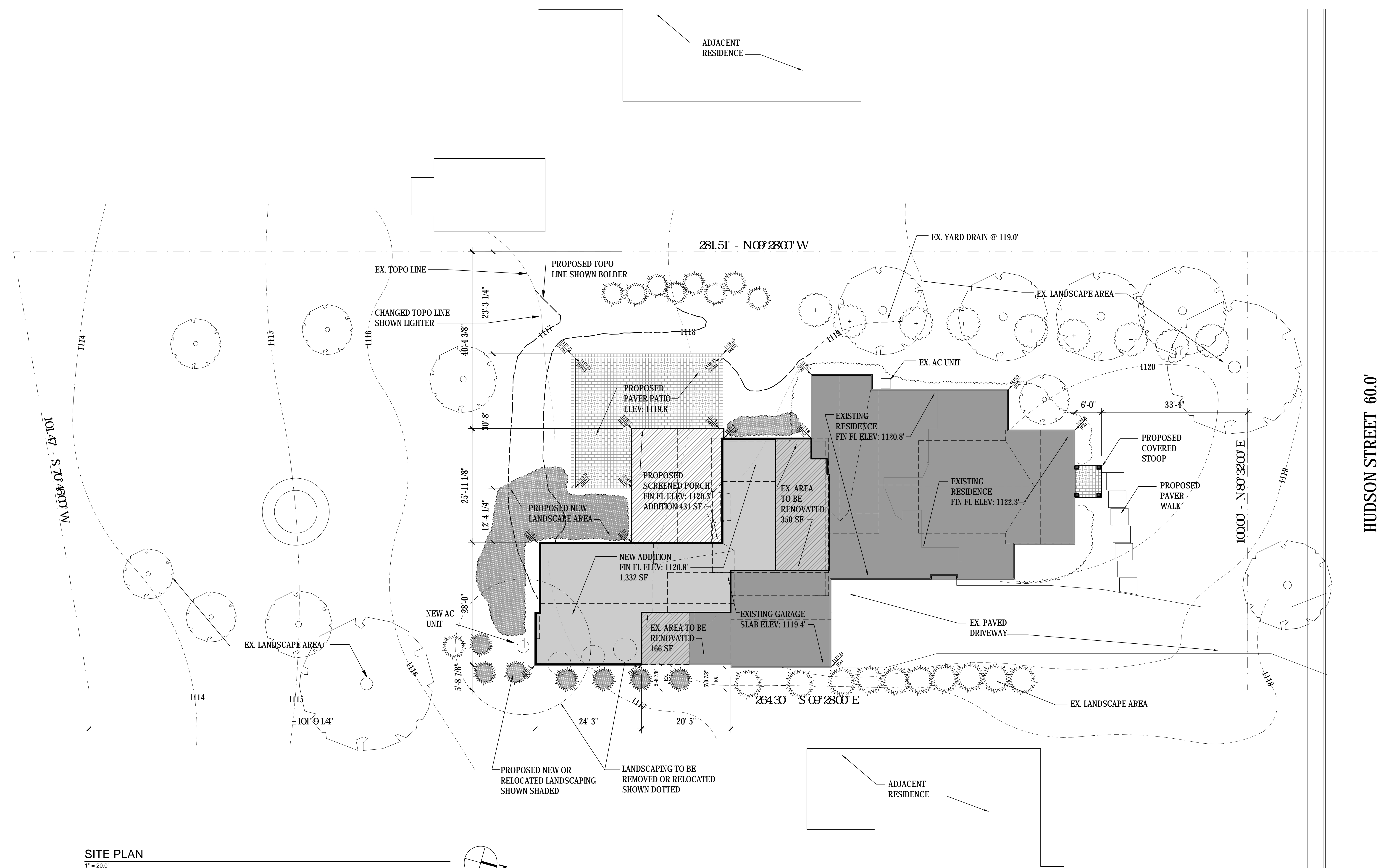


Design and construction documents are instruments of service and are given in confidence and remain the property of Onyx Creative. The use of this design and these construction documents for purposes other than the specific project named herein is strictly prohibited without the expressed written consent of Onyx Creative.



SITE PLAN
 1" = 20.0'

THIS SITE PLAN DATA HAS BEEN TRANSCRIBED FROM A DOCUMENT PREPARED BY:

CULP SURVEYING, LLC.
 3323 SPRING VALLEY ROAD
 AKRON, OH 44333
 330-659-4044

Lauri R. Culp
 STATE OF OHIO PROFESSIONAL SURVEYOR, #7834
 DOCUMENT DATED 3/17/2020

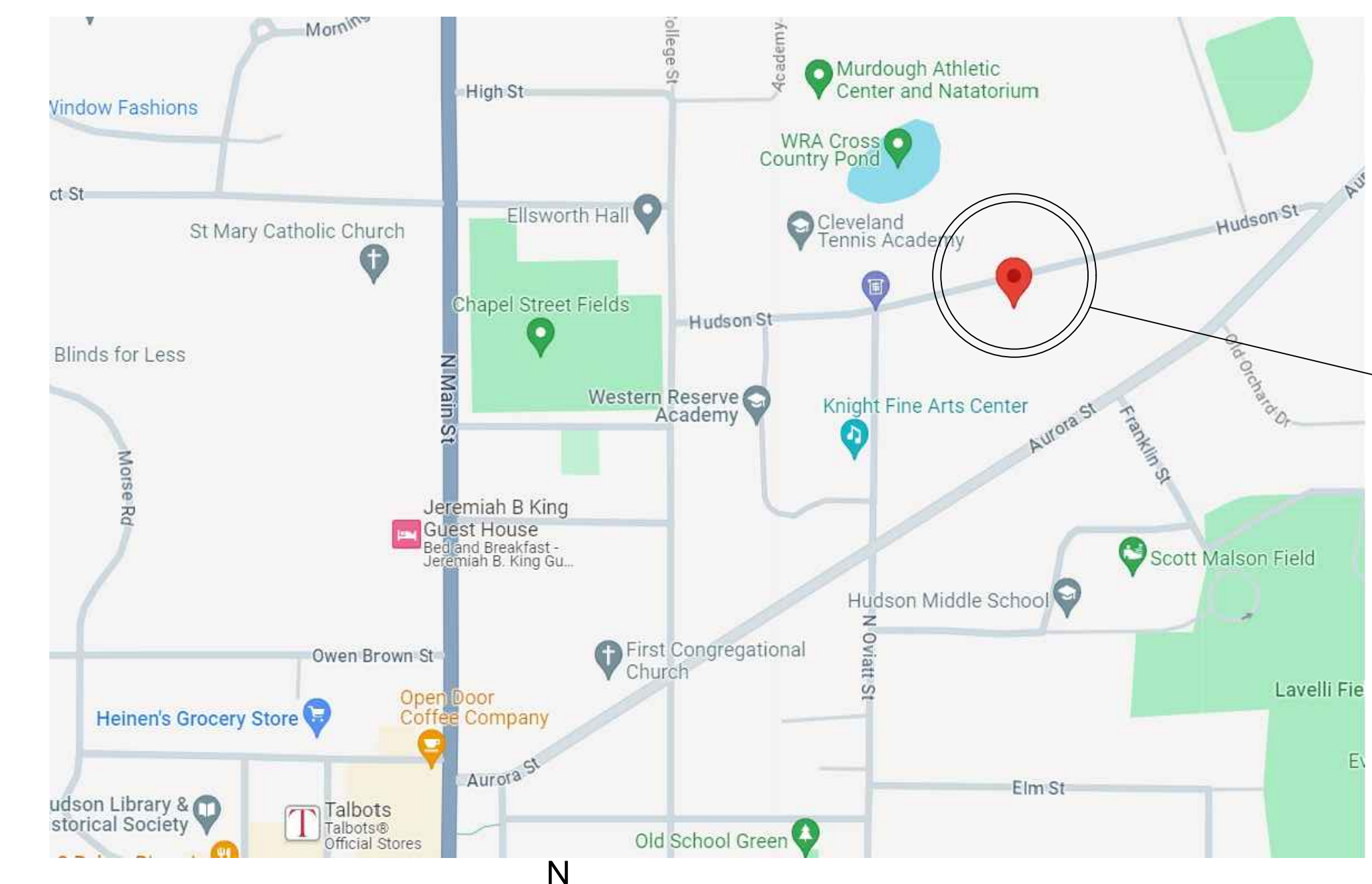
SITE DATA

DISTRICT 4 - HISTORIC RESIDENTIAL DISTRICT
 FRONT YARD SETBACK: 35 FEET
 SIDE YARD SETBACK: 8 FEET (ACCESSORY = 4 FEET)
 REAR YARD SETBACK: 40 FEET (ACCESSORY = 4 FEET)

AREA COVERAGE	EXISTING	PROPOSED
LOT	27,290 SF .63 AC	27,290 SF .63 AC
BUILDING FOOTPRINT	3,368 SF 12 %	2,852 SF (EX)
		516 SF (RENO)
		1,332 SF (NEW)
		431 SF (PORCH)
		5,131 SF 18 %
LANDSCAPING & WALK AREA	22,045 SF 81 %	1,719 SF 75 %
PAVED AREA	1,877 SF 7 %	307 SF 9 %

Where Strong Relationships & Superior Service Guide Your Project

2555 Hartville Rd., Suite B
 Rootstown, OH 44272
 www.WeberEngineeringServices.com
 330-329-2037
 matt@webercivil.com



LOCATION MAP
 NOT TO SCALE

RESIDENCE LOCATION

Project No.: 22164
 Drawn By: FGM
 Date: 1-29-2024 Issue: AHBR submission
 2-13-2024 update per city review
 2-21-2024 update per ahbr comments
 3-20-2024 update per city review

1. Utility lines shown are based on records and field verification. 2. All dimensions are in feet and inches. 3. All bearings are in degrees, minutes and seconds. 4. All distances are in feet and inches. 5. All areas are in square feet and acres. 6. All elevations are in feet above sea level. 7. All bearings and distances are as shown on this plan. 8. All areas are as shown on this plan. 9. All dimensions are as shown on this plan. 10. All bearings and distances are as shown on this plan. 11. All areas are as shown on this plan. 12. All elevations are in feet above sea level. 13. All bearings and distances are as shown on this plan. 14. All areas are as shown on this plan. 15. All dimensions are as shown on this plan. 16. All bearings and distances are as shown on this plan. 17. All areas are as shown on this plan. 18. All elevations are in feet above sea level. 19. All bearings and distances are as shown on this plan. 20. All areas are as shown on this plan. 21. All dimensions are as shown on this plan. 22. All bearings and distances are as shown on this plan. 23. All areas are as shown on this plan. 24. All elevations are in feet above sea level. 25. All bearings and distances are as shown on this plan. 26. All areas are as shown on this plan. 27. All dimensions are as shown on this plan. 28. All bearings and distances are as shown on this plan. 29. All areas are as shown on this plan. 30. All elevations are in feet above sea level. 31. All bearings and distances are as shown on this plan. 32. All areas are as shown on this plan. 33. All dimensions are as shown on this plan. 34. All bearings and distances are as shown on this plan. 35. All areas are as shown on this plan. 36. All elevations are in feet above sea level. 37. All bearings and distances are as shown on this plan. 38. All areas are as shown on this plan. 39. All dimensions are as shown on this plan. 40. All bearings and distances are as shown on this plan. 41. All areas are as shown on this plan. 42. All elevations are in feet above sea level. 43. All bearings and distances are as shown on this plan. 44. All areas are as shown on this plan. 45. All dimensions are as shown on this plan. 46. All bearings and distances are as shown on this plan. 47. All areas are as shown on this plan. 48. All elevations are in feet above sea level. 49. All bearings and distances are as shown on this plan. 50. All areas are as shown on this plan. 51. All dimensions are as shown on this plan. 52. All bearings and distances are as shown on this plan. 53. All areas are as shown on this plan. 54. All elevations are in feet above sea level. 55. All bearings and distances are as shown on this plan. 56. All areas are as shown on this plan. 57. All dimensions are as shown on this plan. 58. All bearings and distances are as shown on this plan. 59. All areas are as shown on this plan. 60. All elevations are in feet above sea level. 61. All bearings and distances are as shown on this plan. 62. All areas are as shown on this plan. 63. All dimensions are as shown on this plan. 64. All bearings and distances are as shown on this plan. 65. All areas are as shown on this plan. 66. All elevations are in feet above sea level. 67. All bearings and distances are as shown on this plan. 68. All areas are as shown on this plan. 69. All dimensions are as shown on this plan. 70. All bearings and distances are as shown on this plan. 71. All areas are as shown on this plan. 72. All elevations are in feet above sea level. 73. All bearings and distances are as shown on this plan. 74. All areas are as shown on this plan. 75. All dimensions are as shown on this plan. 76. All bearings and distances are as shown on this plan. 77. All areas are as shown on this plan. 78. All elevations are in feet above sea level. 79. All bearings and distances are as shown on this plan. 80. All areas are as shown on this plan. 81. All dimensions are as shown on this plan. 82. All bearings and distances are as shown on this plan. 83. All areas are as shown on this plan. 84. All elevations are in feet above sea level. 85. All bearings and distances are as shown on this plan. 86. All areas are as shown on this plan. 87. All dimensions are as shown on this plan. 88. All bearings and distances are as shown on this plan. 89. All areas are as shown on this plan. 90. All elevations are in feet above sea level. 91. All bearings and distances are as shown on this plan. 92. All areas are as shown on this plan. 93. All dimensions are as shown on this plan. 94. All bearings and distances are as shown on this plan. 95. All areas are as shown on this plan. 96. All elevations are in feet above sea level. 97. All bearings and distances are as shown on this plan. 98. All areas are as shown on this plan. 99. All dimensions are as shown on this plan. 100. All bearings and distances are as shown on this plan.



REAR VIEW



REAR RIGHT VIEW

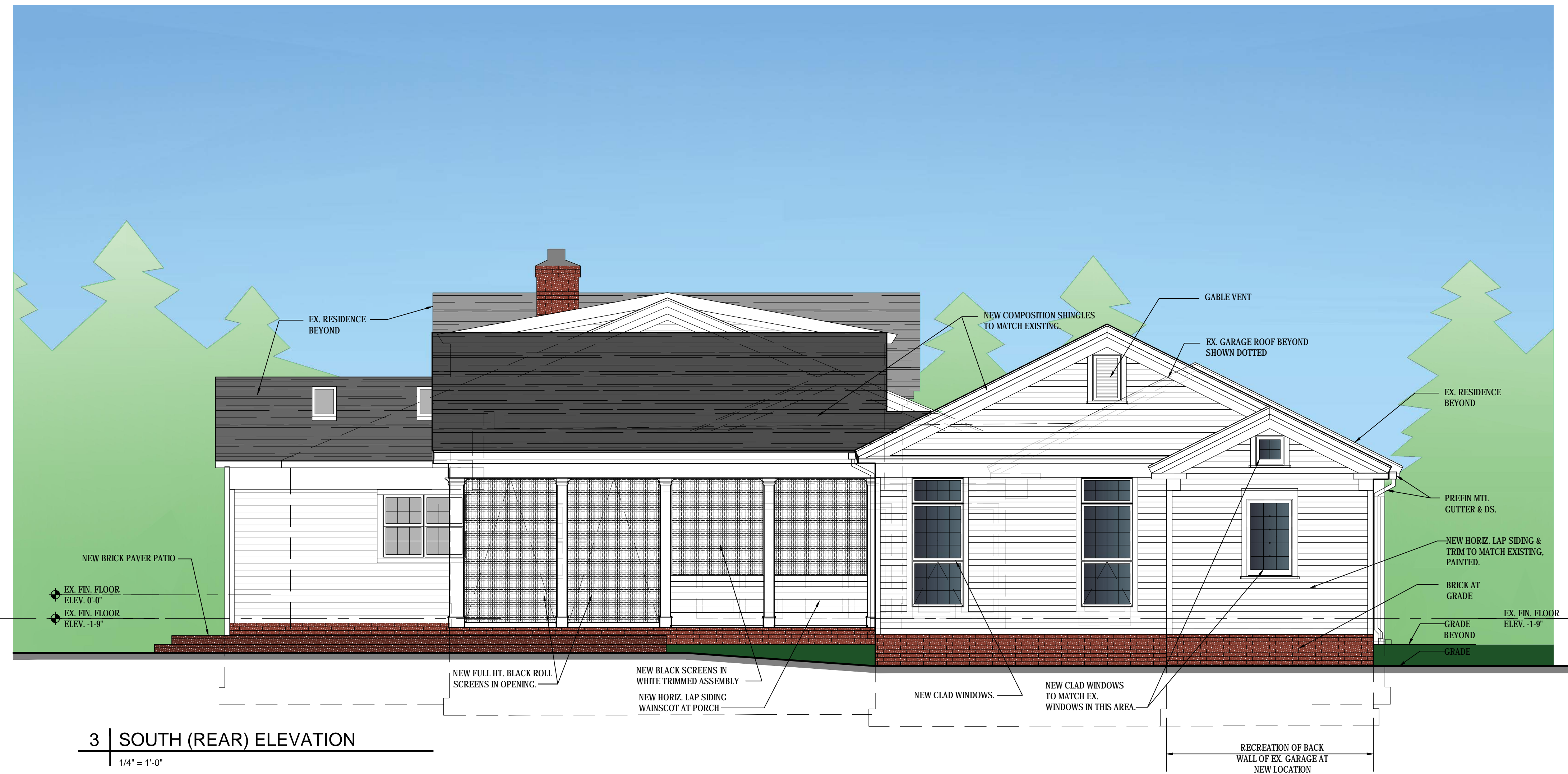


FRONT LEFT VIEW



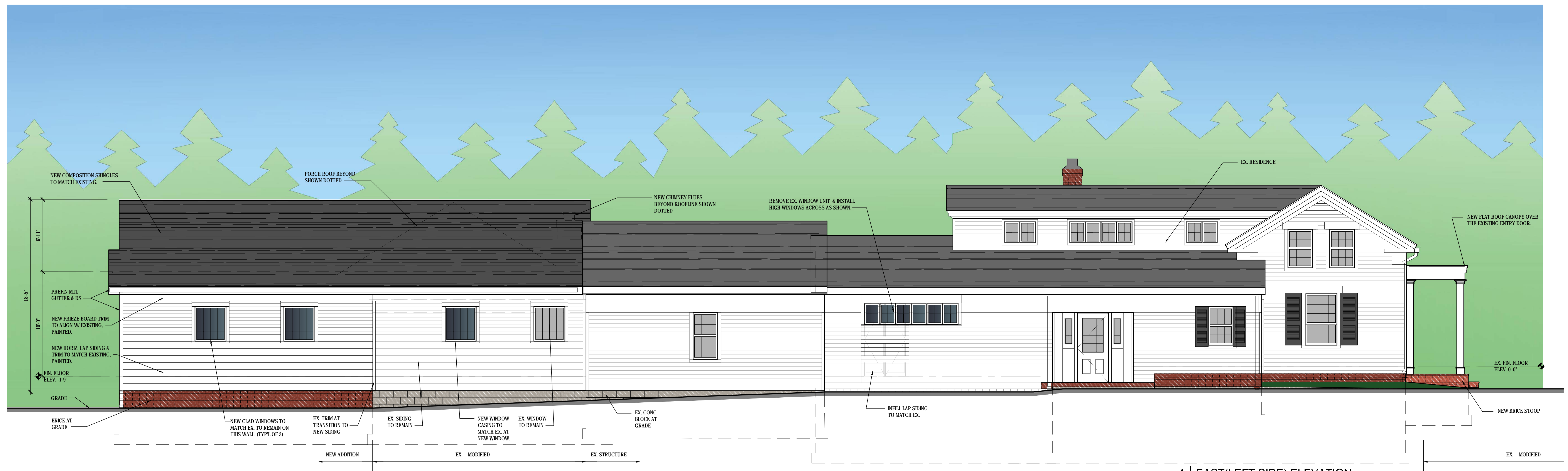
LEFT VIEW

EXISTING IMAGES



3 | SOUTH (REAR) ELEVATION

1/4" = 1'-0"



4 | EAST (LEFT SIDE) ELEVATION

1/4" = 1'-0"

1. Values in parentheses () are for reference only. 2. All dimensions are in feet and inches. 3. All dimensions are to the center of the element unless otherwise noted. 4. All dimensions are to the finished surface unless otherwise noted. 5. All dimensions are to the exterior surface unless otherwise noted. 6. All dimensions are to the interior surface unless otherwise noted. 7. All dimensions are to the center of the element unless otherwise noted. 8. All dimensions are to the finished surface unless otherwise noted. 9. All dimensions are to the exterior surface unless otherwise noted. 10. All dimensions are to the interior surface unless otherwise noted.

Design and construction documents are instruments of service and are given in confidence and remain the property of Onyx Creative. The use of this design and these construction documents for purposes other than the specific project named herein is strictly prohibited without expressed written consent of Onyx Creative.

Project No.: 22164
 Drawn By: FGM
 Date: 1-29-2024 Issue: AHRB submission
 2-13-2024 update per city review
 2-21-2024 update per ahrb comments
 3-20-2024 update per city review