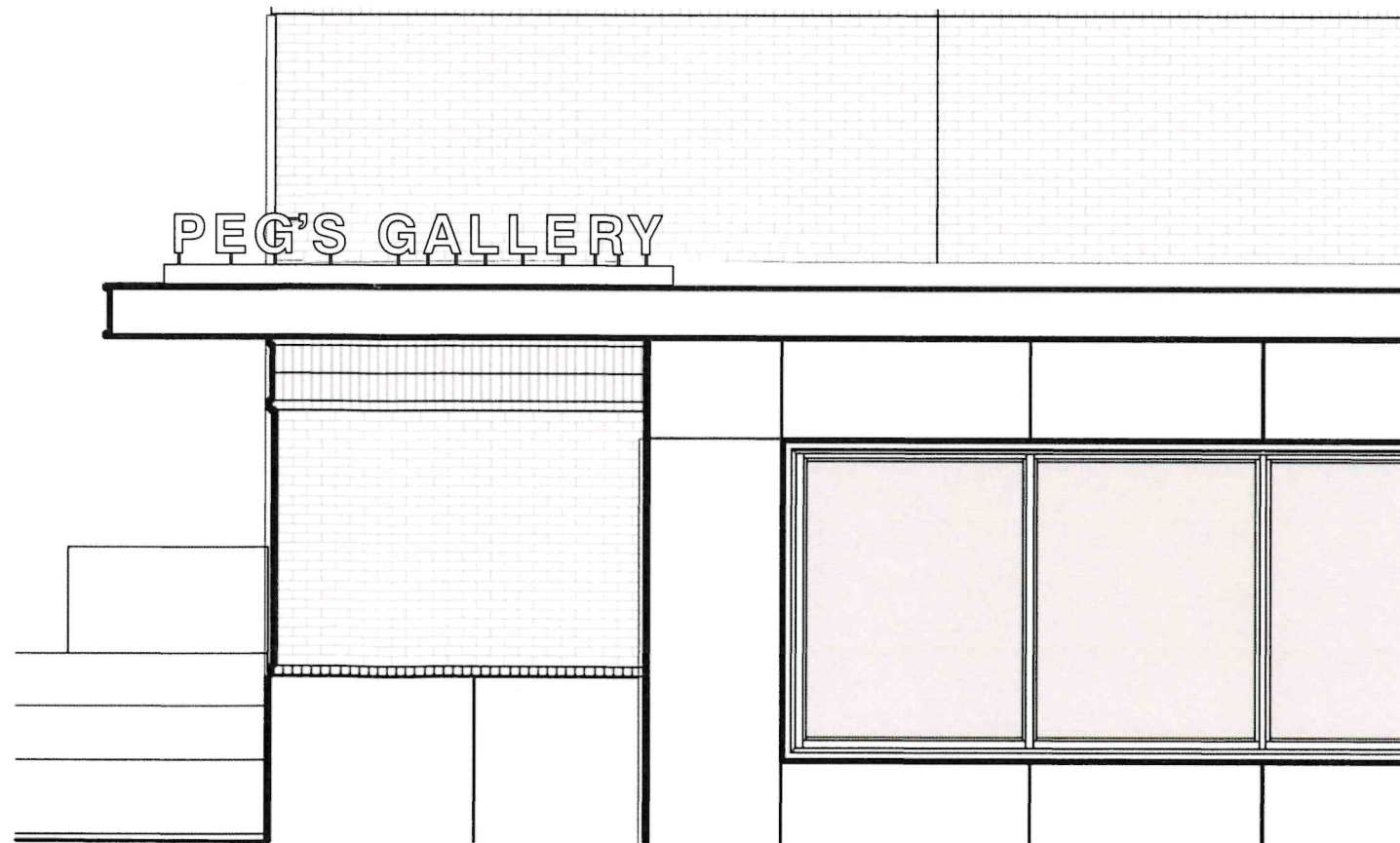


3" DEEP LETTERS
3/4" DIAMETER OF STAND OFF PINS



RENDERING NTS

SIGN ELEVATION: 3/4"=1'-0'

Notes

Manufacture & install one (1) set of non-illuminated, fabricated aluminum, reverse channel letters with finished backs; peg mounted on raceway with continous LED indirect lighting to cast upwards illuminated onto the letters

- Lighting to be close to 4000k as possible
- Reverse channel letters & raceway to be painted MP 12808 Bellaire Brown
- Peg/standoffs to be painted MP 04850 Wheat Berry

NOTE: due to printer limitations, colors shown may not exactly match specified. Refer to material charts for true colors.



Brilliant Electric Sign Co., Ltd.

4811 VAN EPPS RD., CLEVELAND, OHIO 44131 (216)741-3800

NOTE: THIS IS AN ORIGINAL UNPUBLISHED DRAWING, CREATED BY BRILLIANT SIGNS. IT IS SUBMITTED FOR YOUR PERSONAL USE, IN CONJUNCTION WITH A PROJECT BEING PLANNED FOR YOU. IT IS NOT TO BE USED, REPRODUCED, COPIED OR EXHIBITED IN ANY FASHION.

COMPANY NAME	PARK LANE SQUARE	SALESMAN	MH	DATE	5/29/24	REVISION	6/28/24cp 6/26/24cp 7/18/24cp	DESIGN NO.	B24-759
LOCATION	53 EXIT ST., HUDSON, OH 44276	DESIGNER	CP	SCALE		7/24/24cp 8-1-24dm		COPYRIGHT ©	2024
		FILE NAME		charlotte/ park lane (pegs gallery)					



theKcompany inc.
www.theKcompany.com
Service Not Excuses
COMPLETE MECHANICAL HVAC CONTRACTOR
CONTROLS • ENERGY MGMT • DESIGN/BUILD • FABRICATION
Akron 330-773-5125
Canton 330-452-2292
Cleveland 216-736-8182

We Care
WE RECYCLE
REFRIGERANT

MATERIAL SCHEDULE

ALL MATERIAL ASSEMBLIES LISTED BELOW TO OCCUR OVER THE FOLLOWING UNLESS NOTED OTHERWISE:
O FILLED APPLIED MEMBRANE AIR AND WATER RESISTIVE BARRIER
O 5/8" CLASS-MAX GYPSUM SHEATHING
O 3" POLY-CELL POLYSTYRENE CAVITY BOARD INSULATION

MASONRY VENEER (MAS-1)
4" BRICK VENEER W/ MASONRY TIES
BASIS OF DESIGN: CLEVELAND QUARRIES BEREA HERITAGE RED 3

STONE VENEER (S-1)
3" HONED SANDSTONE PANEL
BASIS OF DESIGN: CLEVELAND QUARRIES BEREA SANDSTONE

METAL (MTL-1)
GALVANIZED BENT PLATE STEEL FABRICA

WOOD SOFFIT (WD-1)
1" TONGUE & GROOVE WOOD SIDING W/ STAIN & SEALANT

ROOF (RF-1)
NATURAL QUARRIED SLATE ROOFING
BASIS OF DESIGN: VERMONT SLATE COMPANY CURPA 12, DARK GREY SLATE

ALUMINUM STOREFRONT (SF-1)
ALUMINUM FRAMED ENTRANCES AND STOREFRONTS
BASIS OF DESIGN: KAWNEER TRIFAB 451

ALUMINUM WINDOWS (WF-2)
ALUMINUM DOORS AND FRAMES
BASIS OF DESIGN: GRAHAM GTR700 & GTR700

RUBBER ROOF (RF-3)
RUBBER ROOF MEMBRANE (TPO OR EPDM)
O 1/8" 2" AIR-MAILED EXTERIOR GRADE SHEATHING/
MINIMUM SLOPE 1/4" PER FOOT. COORDINATE SELECTION WITH ARCHITECT AND OWNER

EXTERIOR ELEVATION GENERAL NOTES

ALL EXPOSED WOOD ELEMENTS AND TONGUE AND GROOVE CEILINGS ARE TO BE DOUG FIR, STAINED AND SEALED. COORDINATE FINAL COLOR WITH ARCHITECT AND OWNER
ALL ROOF PENETRATIONS TO BE COORDINATED WITH ARCHITECT PRIOR TO INSTALLATION TO ENSURE AESTHETIC EXPECTATIONS ARE MAINTAINED.
GUTTER PROFILES SHALL BE SUBMITTED FOR APPROVAL PRIOR TO ORDERING.

Peninsula

www.pa-architects.com

EAST
1775 Main Street
Peninsula, Ohio 44264
T 330.657.2800

WEST
233 East Main St, Suite #404
Bozeman, Montana 59715
T 406.524.9354

PROGRESS
NOT FOR
CONSTRUCTION

PROJECT:
PARK LANE SQUARE | HOME & GALLERY

PROJECT ADDRESS:
53 FIRST STREET, HUDSON, OHIO 44236



PROJECT TEAM:

P PENINSULA
ARCHITECTS

CIVIL ENGINEER:
OSBOURNE ENGINEERING
P 216.981.2020

STRUCTURAL ENGINEER:
THORSON BAKER + ASSOCIATES
P 330.659.6688

LANDSCAPE ARCHITECT:
MKS
P 614.686.0174

MEP ENGINEER:
THORSON BAKER + ASSOCIATES
P 330.659.6688

HISTORIC PRESERVATION:
JOHN MILNER ARCHITECTS
P 610.388.3425

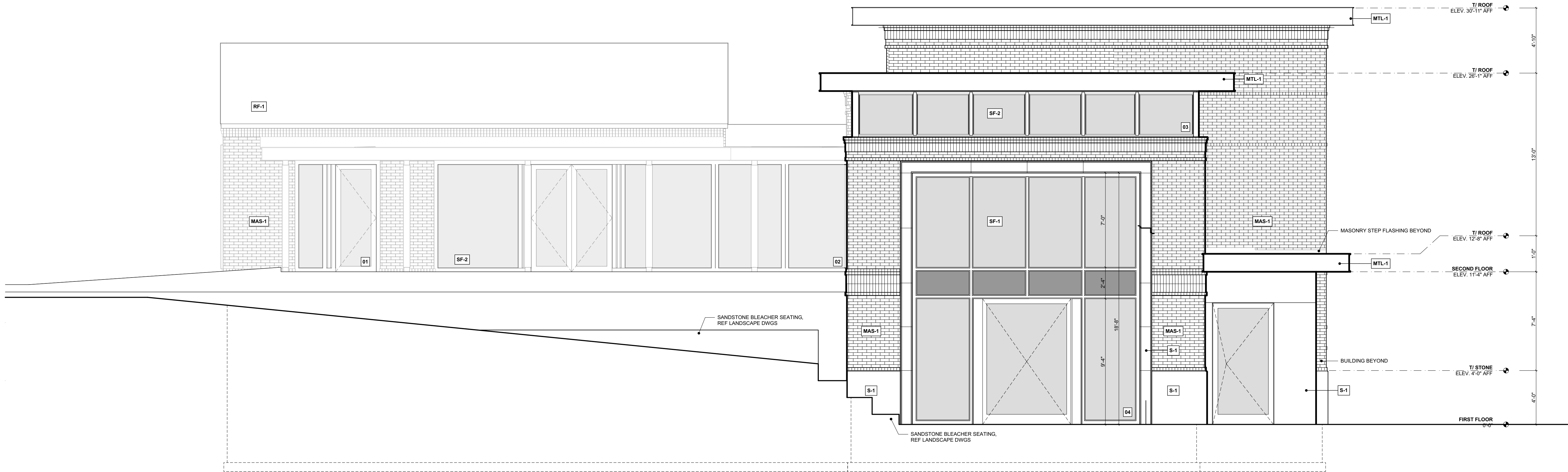
PROJECT #: 2106

ISSUE: BID PACKAGE 1 2022-02-15
HUDSON AHR 2022-03-01

EXTERIOR ELEVATIONS

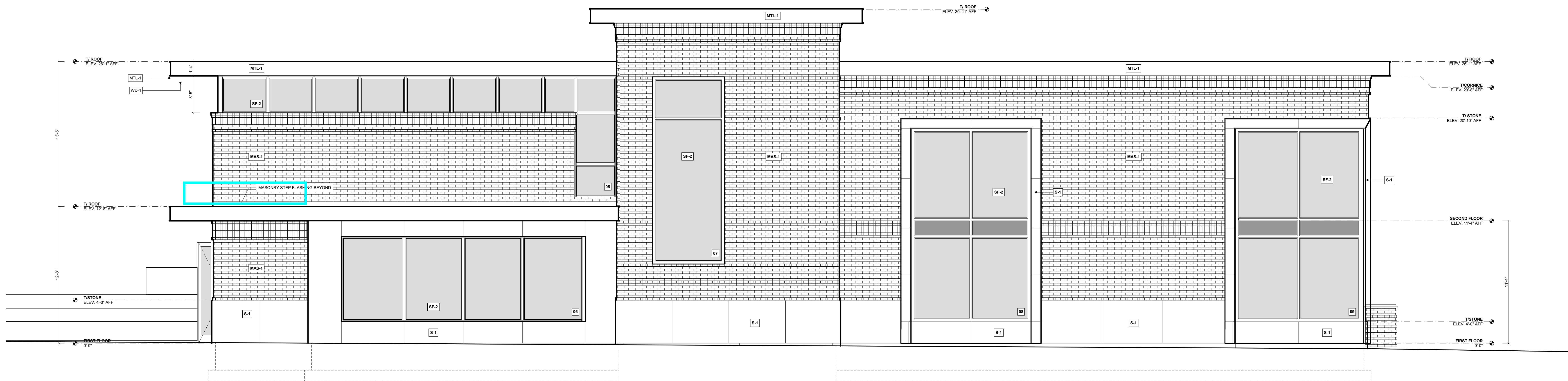
A3.01

COPYRIGHT 2022 Peninsula Architects LTD



1 NORTH ELEVATION

SCALE: 1/4" = 1'-0"



2 WEST ELEVATION

SCALE: 1/4" = 1'-0"