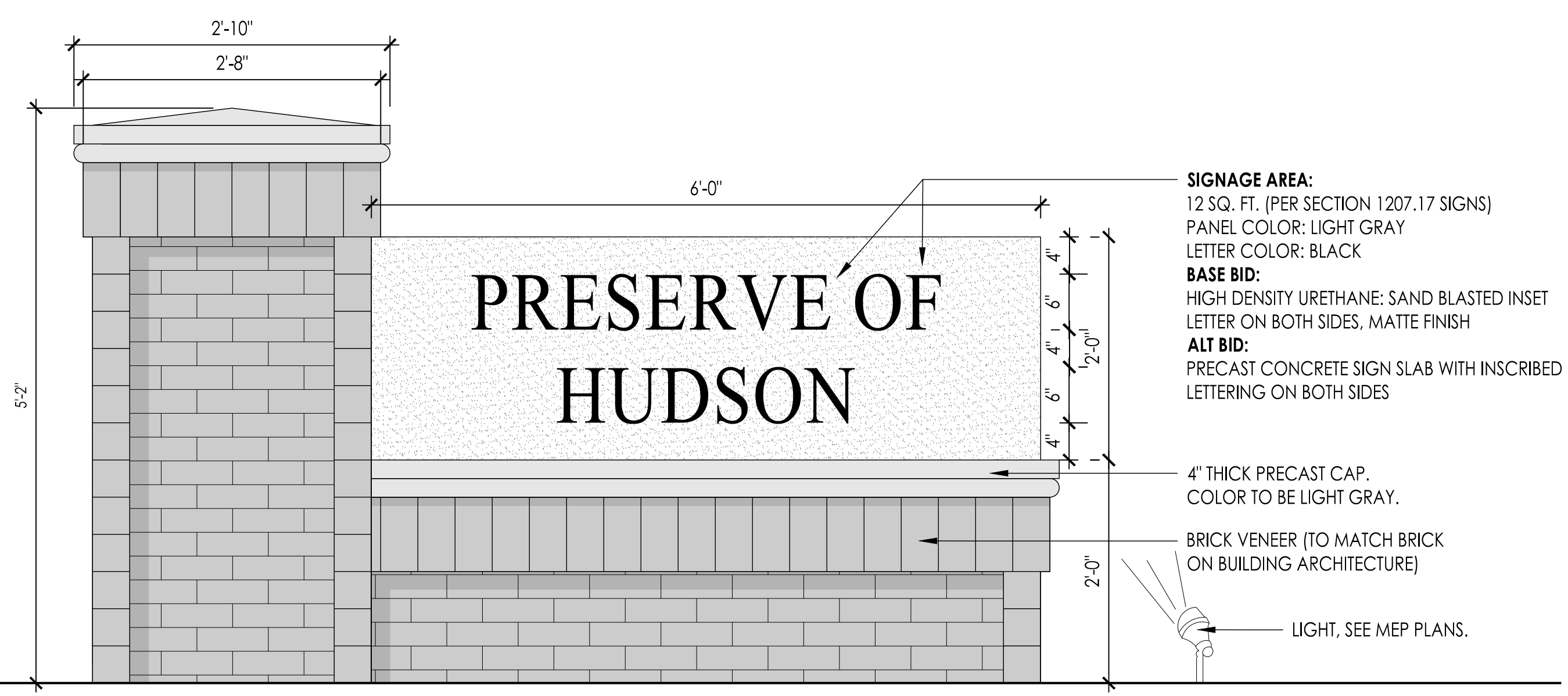


**NOTE:**  
DETAILS SHOWN FOR BASIS OF DESIGN ONLY.  
CONTRACTOR TO SUBMIT BRICK SAMPLES AND  
SHOP DRAWINGS OF ENTRY SIGN AND TYPICAL  
COLUMN FOR OWNER AND STRUCTURAL  
ENGINEER'S REVIEW PRIOR TO CONSTRUCTION.



### GENERAL NOTES:

1. EACH CONTRACTOR IS TO VERIFY WITH OWNER AND UTILITY COMPANIES THE LOCATIONS OF ALL UTILITIES PRIOR TO CONSTRUCTION. TO DETERMINE IN THE FIELD THE ACTUAL LOCATIONS AND ELEVATIONS OF ALL EXISTING UTILITIES, WHETHER SHOWN ON THE PLANS OR NOT. THE CONTRACTOR SHALL CALL UTILITY PROTECTION SERVICE 72 HOURS PRIOR TO CONSTRUCTION.
2. EXAMINE FINISH SURFACE, GRADES, TOPSOIL QUALITY AND DEPTH. DO NOT START ANY WORK UNTIL UNSATISFACTORY CONDITIONS HAVE BEEN CORRECTED. VERIFY LIMITS OF WORK BEFORE STARTING.
3. CONTRACTOR RESPONSIBLE FOR COST OF REPAIRS TO EXISTING SITE CONDITIONS WHEN DAMAGED BY CONTRACTOR. REPAIR TO THE SATISFACTION OF THE OWNER.
4. ALL PLANT MASSES TO BE CONTAINED WITHIN 3" DEEP HARDWOOD MULCH BED WITH SMOOTH/CONTINUOUS SHOVEL/DUG EDGE WHEN NOT BOUND BY PAVEMENT.
5. CONTRACTOR SHALL MAINTAIN POSITIVE DRAINAGE IN LAWN AREAS.
6. FINE GRADE LAWN AREAS TO PROVIDE A SMOOTH AND CONTINUAL GRADE FREE OF IRREGULARITIES OR DEPRESSIONS.
7. CONTRACTOR SHALL SEED OR SOD ALL AREAS DISTURBED DURING CONSTRUCTION.
8. ALL PLANTS SHALL MEET OR EXCEED STANDARDS SET IN THE U.S.A. STANDARD FOR NURSERY STOCK.
9. ALL PLANTING OPERATIONS SHALL ADHERE TO THE AMERICAN ASSOCIATION OF NURSERYMEN STANDARDS.
10. QUANTITIES SHOWN ARE INTENDED TO ASSIST CONTRACTOR IN EVALUATING THEIR OWN TAKE OFFS AND ARE NOT GUARANTEED AS ACCURATE REPRESENTATIONS OF REQUIRED MATERIALS. THE CONTRACTOR SHALL BE RESPONSIBLE FOR THEIR BID QUANTITIES AS REQUIRED BY THE PLAN.
11. WHERE TREE LOCATIONS OCCUR UNDER EXISTING OVERHEAD UTILITIES OR CROWD EXISTING TREES, NOTIFY OWNER'S REPRESENTATIVE TO ADJUST TREE LOCATIONS.
12. SEE SHEET L6 FOR PLANT LIST AND QUANTITIES.

### CONSTRUCTION NOTES:

- 1 LAWN AREA, TOPSOIL TO BE FLUSH WITH ADJACENT PAVED SURFACES.
- 2 LANDSCAPE AREA, PLANT AS INDICATED AND MULCH ENTIRE AREA WITH HARDWOOD BARK MULCH AT 3" MIN.
- 7 ENTRY SIGN  
SEE DETAIL 3 ON SHEET L5.



PLANT MATERIALS LIST

NOTE: CONTRACTOR RESPONSIBLE FOR PLANT QUANTITIES SHOWN ON PLAN.

| QTY.             | KEY | COMMON NAME                    | BOTANICAL NAME                       | SIZE     | ROOT  | L3 | L4 | L5 | REMARKS    |
|------------------|-----|--------------------------------|--------------------------------------|----------|-------|----|----|----|------------|
| SHADE TREES      |     |                                |                                      |          |       |    |    |    |            |
| 19               | FE  | FRONTIER ELM                   | Ulmus 'Frontier'                     | 2" Cal.  | B&B   | 5  | 14 | -  |            |
| 12               | GZ  | GREEN VASE ZELKOVA             | Zelkova serrata 'Green Vase'         | 2" Cal.  | B&B   | -  | 12 | -  |            |
| 41               | LP  | EXCLAMATION LONDON PLANETREE   | Platanus acerifolia 'Morton Circle'  | 2" Cal.  | B&B   | 2  | 25 | 14 |            |
| 13               | SH  | SKYLINE HONEYLOCUST            | Gleditsia triacanthos 'Skycole'      | 2" Cal.  | B&B   | 1  | 12 | -  |            |
| 6                | SM  | SIENNA GLEN MAPLE              | Acer x freemanii 'Sienna'            | 2" Cal.  | B&B   | 3  | 3  | -  |            |
| 4                | SW  | SWAMP WHITE OAK                | Quercus bicolor                      | 2" Cal.  | B&B   | 2  | 2  | -  |            |
| 6                | TP  | TULIP POPLAR                   | Liriodendron tulipifera              | 2" Cal.  | B&B   | 2  | 4  | -  |            |
| ORNAMENTAL TREES |     |                                |                                      |          |       |    |    |    |            |
| 18               | AC  | ADIRONDACK CRABAPPLE           | Malus 'Adirondack'                   | 2" Cal.  | B&B   | -  | 18 | -  |            |
| 5                | ER  | EASTERN REDBUD                 | Cercis canadensis                    | 2" Cal.  | B&B   | 1  | 4  | -  |            |
| 8                | IS  | IVORY SILK JAPANESE TREE LILAC | Syringa reticulata 'Ivory Silk'      | 2" Cal.  | B&B   | -  | 8  | -  |            |
| 5                | KD  | KOUSA DOGWOOD                  | Cornus Dogwood                       | 6' Hgt.  | B&B   | 2  | 3  | -  | MULTI-STEM |
| 17               | RP  | RAINBOW PILLAR SERVICEBERRY    | Amelanchier canadensis 'Glen Form'   | 6' Hgt.  | B&B   | -  | 17 | -  | MULTI-STEM |
| 6                | JM  | JANE MAGNOLIA                  | Magnolia 'Jane'                      | 6' Hgt.  | B&B   | 2  | 4  | -  | MULTI-STEM |
| EVERGREEN TREES  |     |                                |                                      |          |       |    |    |    |            |
| 8                | BH  | BLACK HILLS SPRUCE             | Picea glauca Densata                 | 6' Hgt.  | B&B   | -  | 8  | -  |            |
| 9                | DF  | DOUGLAS FIR                    | Pseudotsuga menziesii                | 6' Hgt.  | B&B   | -  | 9  | -  |            |
| 15               | EC  | EASTERN RED CEDAR              | Juniperus virginiana                 | 6' Hgt.  | B&B   | -  | 15 | -  |            |
| SHRUBS           |     |                                |                                      |          |       |    |    |    |            |
| 14               | BB  | BOTTLE BRUSH BUCKEYE           | Aesculus parvifolia                  | 36" HGT. | CONT. | 4  | 12 | -  |            |
| 8                | G8  | GEM BOX INKBERRY               | Ilex Glabra Gem Box                  | 24" HGT. | CONT. | -  | -  | 8  |            |
| 54               | GV  | GREEN VELVET BOXWOOD           | Buxus x 'Green Velvet'               | 24" HGT. | CONT. | 12 | 42 | -  |            |
| 16               | KL  | 'MISS KIM' KOREAN LILAC        | Syringa patula 'Miss Kim'            | 36" HGT. | CONT. | 8  | 8  | -  |            |
| 66               | LV  | LEATHERLEAF VIBURNUM           | Viburnum rhytidophyllum              | 36" HGT. | CONT. | -  | 64 | 2  |            |
| 13               | OH  | OAKLEAF HYDRANGEA              | Hydrangea quercifolia                | 36" HGT. | CONT. | 5  | 8  | -  |            |
| 31               | SS  | LITTLE HENRY SWEETSPIRE        | Itea virginica 'Spirch' LITTLE HENRY | 24" HGT. | CONT. | 6  | 25 | -  |            |
| PERENNIALS       |     |                                |                                      |          |       |    |    |    |            |
| 26               | BE  | BLACK-EYED SUSAN               | Rudbeckia hirta                      | NO. 1    | CONT. | -  | -  | 26 |            |
| 19               | PC  | PURPLE CONEFLOWER              | Echinacea purpurea                   | NO. 1    | CONT. | -  | -  | 19 |            |

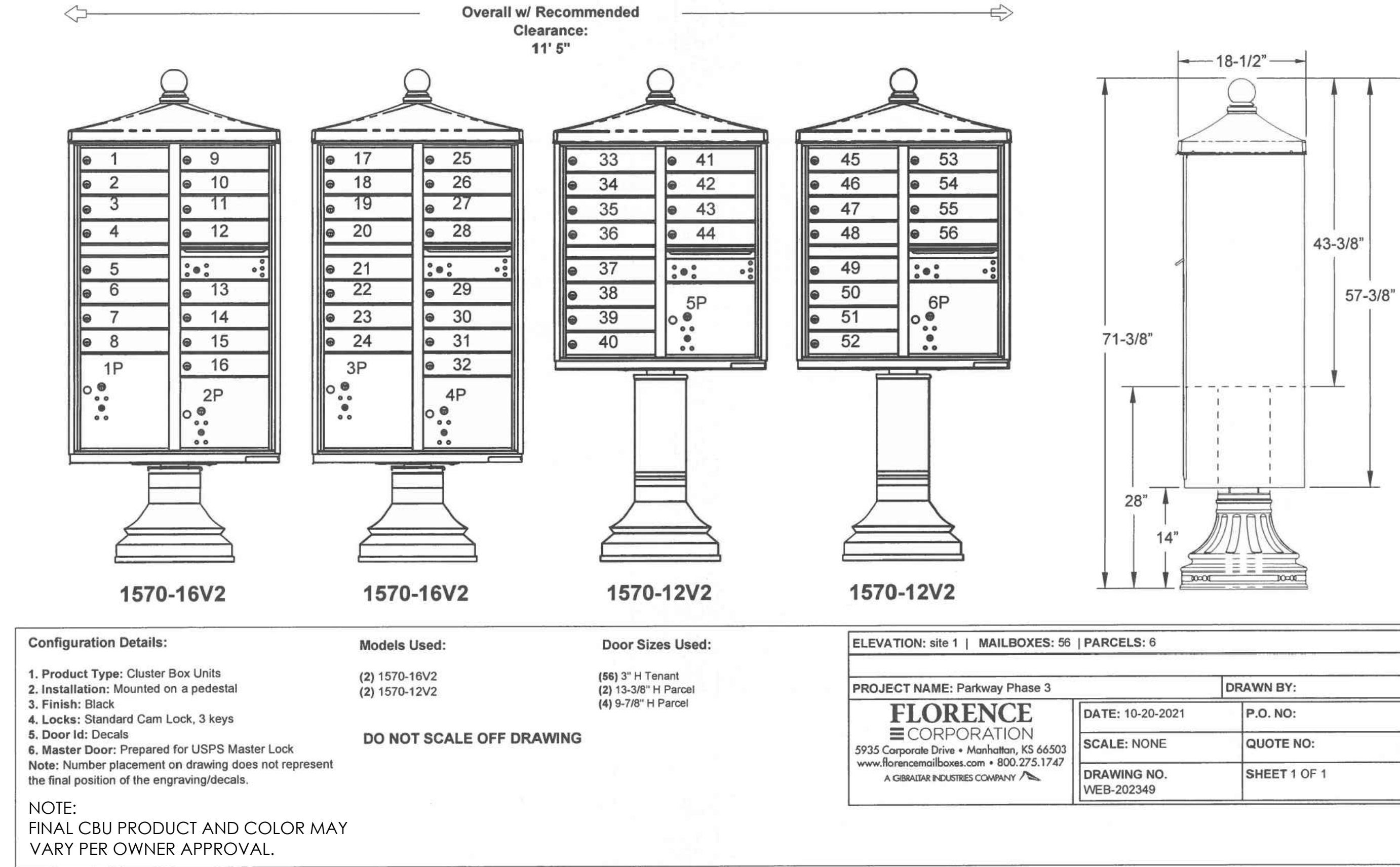
SAMPLE COST ESTIMATE

NOTE: CONTRACTOR RESPONSIBLE FOR FINAL COST ESTIMATE BASED ON FINAL DESIGN.

Preserve of Hudson, Hudson, OH

Note: This estimate is approximate only and will be adjusted with the final design.

| Item             | Price    | Unit | Quantity | Cost         |
|------------------|----------|------|----------|--------------|
| Deciduous Trees  | \$750.00 | EA   | 101      | \$75,750.00  |
| Shrubs           | \$65.00  | EA   | 202      | \$13,130.00  |
| Orn Trees        | \$750.00 | EA   | 59       | \$44,250.00  |
| Evergreen Trees  | \$650.00 | EA   | 32       | \$20,800.00  |
| Perennials       | \$25.00  | EA   | 45       | \$1,125.00   |
| Lawn Seed        | \$2.50   | SY   | 14,586   | \$36,465.00  |
| Wetland Seed Mix | \$600.00 | EA   | 1        | \$600.00     |
| TOTAL            |          |      |          | \$192,120.00 |



1 CLUSTER BOX UNIT DETAIL

N.T.S.



NOTE:  
IMAGE SHOWN FOR BASIS OF DESIGN. FINAL PAVILION PRODUCT MAY VARY PER OWNER APPROVAL.

2 COMMUNITY PAVILION DETAIL

N.T.S.





# Preserve of Hudson

L1 - Illustrative Site Plan

Hudson, OH / March 18, 2025

TRIBAN  
INVESTMENT, LLC

EDGE  
www.edgela.com