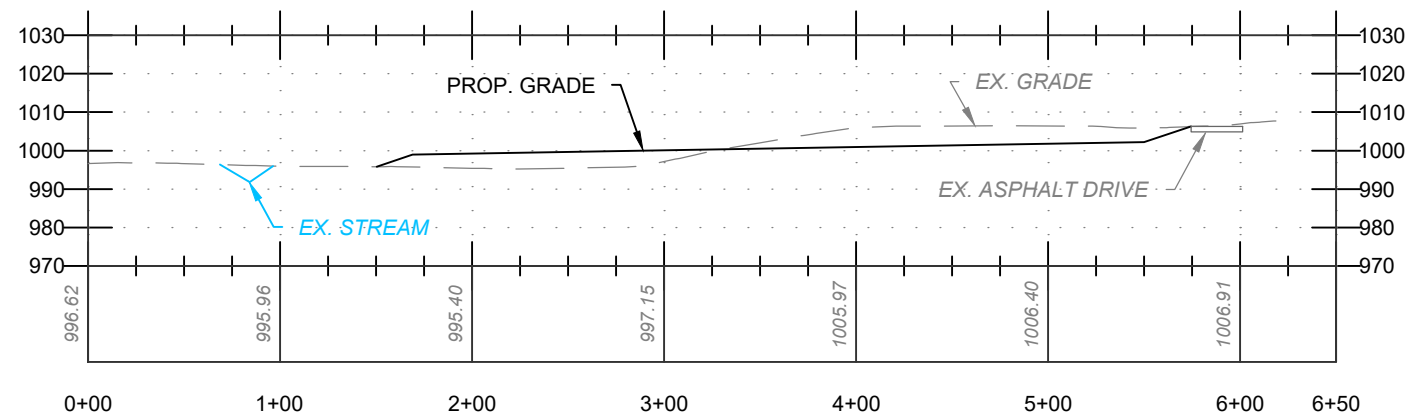


YDC OPTION B

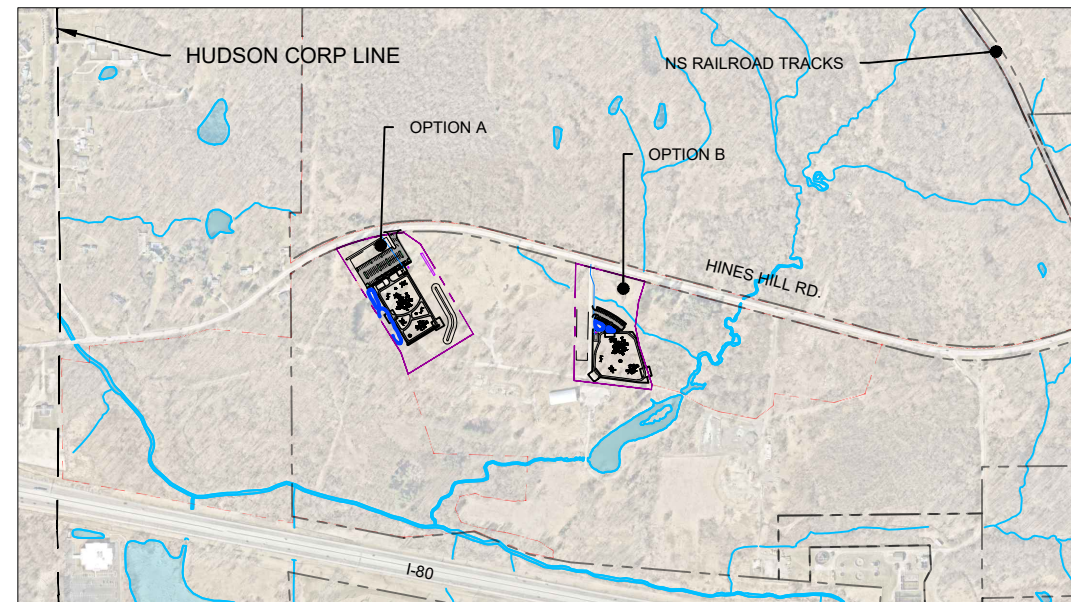


PLAYGROUND SIZE: 2.0 ACRES
TOTAL PARCEL AREA: 6.0 ACRES
SECTION A - A

MINIMUM REQUIREMENTS FOR PARKING LOT PER ITE PARKING GENERATION MANUAL 3RD EDITION :
TOTAL NUMBER OF SPACES: 30 SPACES
TOTAL NUMBER OF HANDICAP ACCESSIBLE SPACES: 2 SPACES

PROPOSED PARKING LOT:
TOTAL NUMBER OF SPACES: 32 SPACES
TOTAL NUMBER OF HANDICAP ACCESSIBLE SPACES: 8 SPACES
TOTAL NUMBER OF NON-HANDICAP ACCESSIBLE SPACES: 24 SPACES

- NOTES:
- 1. PROPOSED PLAYGROUND EQUIPMENT, PLAYGROUND SURFACES, FENCING AND WALKING TRAILS ARE SHOWN FOR CONCEPTUAL PURPOSES ONLY AND ARE **NOT INCLUDED IN ESTIMATES**.
 - 2. SUMMIT COUNTY DEPARTMENT OF SANITARY SEWER SERVICES HAS DISCUSSED INSTALLING A NEW SANITARY LINE ALONG HINES HILL ROAD IN THE NEXT 3-5 YEARS WHICH CAN BE TIED INTO AT A LATER DATE.



SITE VICINITY MAP

OHIO

HUDSON

0100

50

0

SCALE IN FEET

SCALE: 1"=100'

VERTICAL SCALE 1"=50'

CITY OF HUDSON

ENGINEERING DEPARTMENT

1140 TEREX ROAD

HUDSON, OH 44236

(330)-342-1770

INCLUSIVE

PLAYGROUND

EXHIBIT

DESCRIPTION:	REV. #	DATE:

YDC OPTION B EXHIBIT

CALCULATED

XXX

CHECKED

XXX

SHEET 2 OF 4