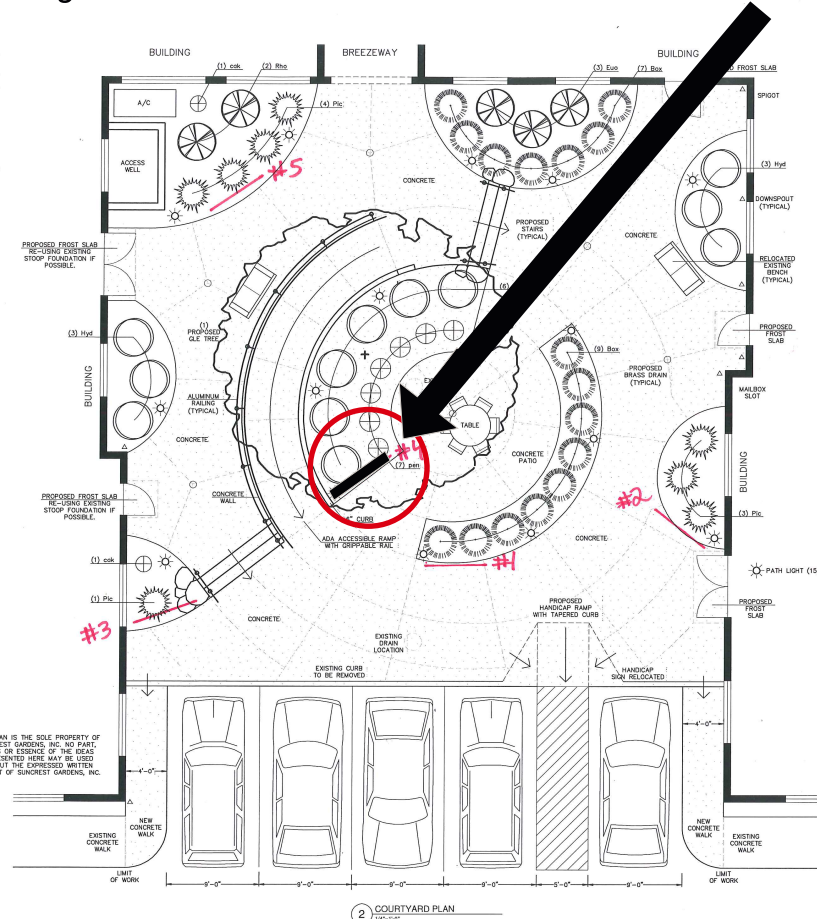
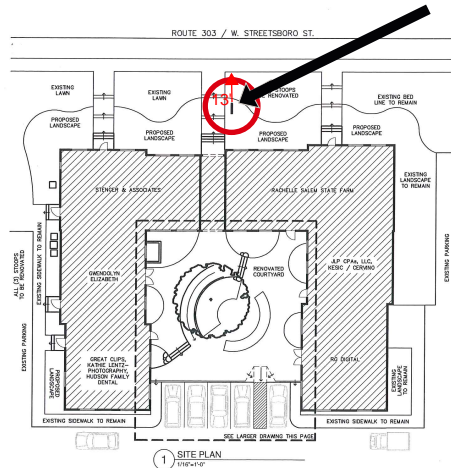


Location of ground sign  
on Rt. 303 side of the building

Location of ground sign  
in courtyard area.



Courtyard Landscape			
Symbol	Quantity	Plant Material Description	Size
<b>TREES</b>			
GLE	1	Gleditsia triacanthos 'Imperial'	2' cal. 2" B&B
<b>SHRUBS</b>			
Bgv	16	Buxus x 'Green Velvet'	18"
Evo	3	Euonymus alatus 'Rudy Haag'	24" H. B&B
Hyd	12	Hydrangea paniculata 'Little Lime'	24"
Pic	8	Prunella alba 'Wildfire'	18"
Rho	2	Rhododendron 'P.J.M.'	24" H. B&B
<b>ORNAMENTAL GRASSES</b>			
cal	1	Calamagrostis x scottiae 'Karl Foerster'	#2 Cont.
pen	8	Peristachia alpestris 'Hemlock'	#2 Cont.

3 COURTYARD PLANT SCHEDULE

#1: most centered, but blocks view to back of courtyard. Does add privacy to patio

#2: off to the side + out of the way. Does not block views. May be easy to miss

#3: same comments as #2

#4: fits in landscape best the easiest. At odd angle. Still somewhat centered

#5: does not block views except A/C which is good. Still visible from parking lot since sign is 6' tall. does not obstruct overall design

This is a color rendering of the design. Please note the colors are for viewing purposes ONLY. Actual colors will be different from the colors shown. Changes to the design may result in additional charges.

Macedonia, OH

**Signarama**  
The way to grow your business.

This design and drawing submitted for your review and approval is the exclusive property of Signarama. It may not be reproduced, copied, exhibited or utilized for any purpose, in part or in whole by any individual inside or outside without written consent of Signarama.

9862 Freeway Dr., Unit B

Ph: 330-468-0556 • Fax: 330-468-0553

graphics@signaramaohio.com

DATE: 10/25/18  
DRAWN BY: JAMES W. VANVOORHIS  
NOTES: INITIAL MEETING  
PRESENTATION  
FINAL DRAWINGS

**COURTYARD PLAN**  
**CAMBRIDGE COMMONS**  
126 W. STREETSBORO ST.  
HUDSON, OH 44236

Signarama • Garden Center  
5137 Akron-Cleveland Blvd., Peninsula, OH 44264  
www.Signarama.com • 330-251-4689

NORTH ARROW

SCALE: SEE DRAWING  
DESIGNER: VANVOORHIS

**L-1**

Macedonia, OH  
**Signarama**<sup>™</sup>  
The way to grow your business.

9862 Freeway Dr., Unit B  
Ph: 330-468-0556 • Fax: 330-468-0553  
graphics@signaramaohio.com

This design and drawing submitted for your review and approval is the exclusive property of Signarama. It may not be reproduced, copied, exhibited or utilized for any purpose, in part or in whole by any individual inside or outside without written consent of Signarama.

This is a color rendering of the design. Please note the colors are for viewing purposes ONLY. Actual colors will be different from the colors shown. Changes to the design may result in additional charges.

- Aluminum slat sign system
- Matte sierra tan frame
- Matte lettering



Existing Sign

Alum. Post & Panel  
slat sign system





## Alum. Post & Panel Slat Sign system

- Aluminum slat sign system
- Matte sierra tan frame
- Matte lettering
- Lettering 1.75" high

This design and drawing submitted for your review and approval is the exclusive property of Signarama. It may not be reproduced, copied, exhibited or utilized for any purpose, in part or in whole by any individual inside or outside without written consent of Signarama.

This is a color rendering of the design. Please note the colors are for viewing purposes ONLY. Actual colors will be different from the colors shown. Changes to the design may result in additional charges.

Macedonia, OH  
**Signarama**  
 The way to grow your business.

9862 Freeway Dr., Unit B

Ph: 330-468-0556 • Fax: 330-468-0553

graphics@signaramaohio.com

9862 Freeway Dr., Unit B  
Ph: 330-468-0556 • Fax: 330-468-0553  
graphics@signaramaohio.com

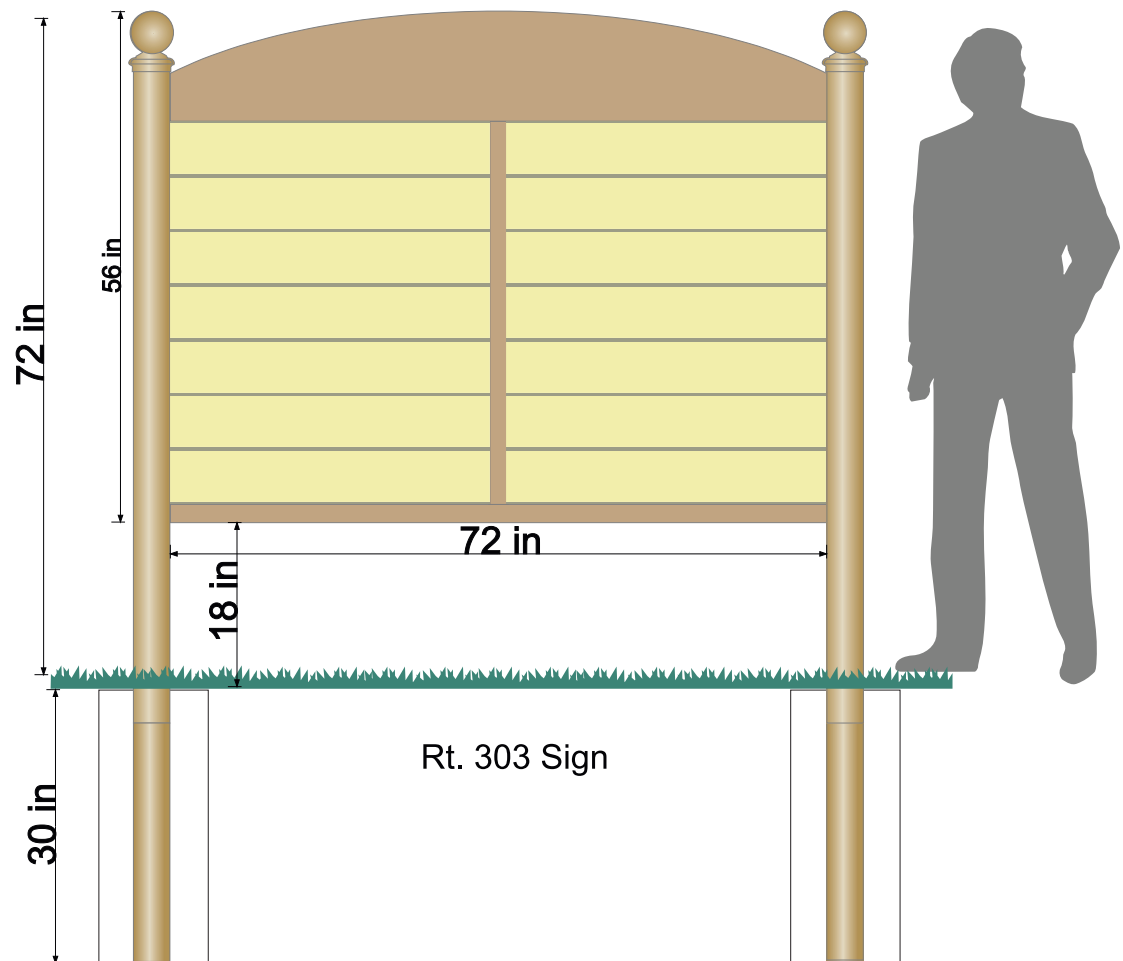
This design and drawing submitted for your review and approval is the exclusive property of Signarama. It may not be reproduced, copied, exhibited or utilized for any purpose, in part or in whole by any individual inside or outside without written consent of Signarama.

This is a color rendering of the design. Please note the colors are for viewing purposes ONLY. Actual colors will be different from the colors shown. Changes to the design may result in additional charges.



## METHOD OF GROUND INSTALLATION

*Commons Rt 303 Sign  
to be embedded in concrete  
holes - 12"W x 30"H*





9862 Freeway Dr., Unit B  
Ph: 330-468-0556 • Fax: 330-468-0553  
graphics@signaramaohio.com

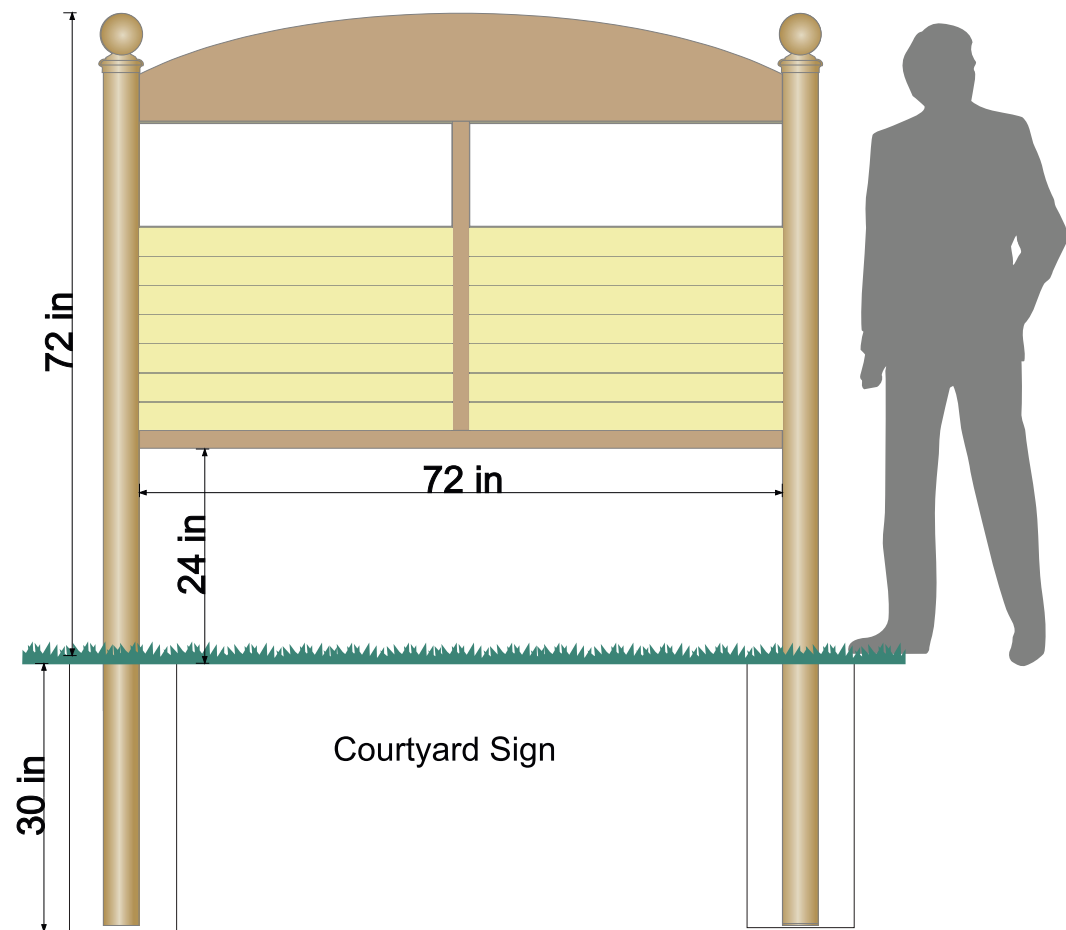
This design and drawing submitted for your review and approval is the exclusive property of Signarama. It may not be reproduced, copied, exhibited or utilized for any purpose, in part or in whole by any individual inside or outside without written consent of Signarama.

This is a color rendering of the design. Please note the colors are for viewing purposes ONLY. Actual colors will be different from the colors shown. Changes to the design may result in additional charges.



## METHOD OF GROUND INSTALLATION

*Commons Courtyard Sign  
to be embedded in concrete  
holes - 12"W x 30"H*



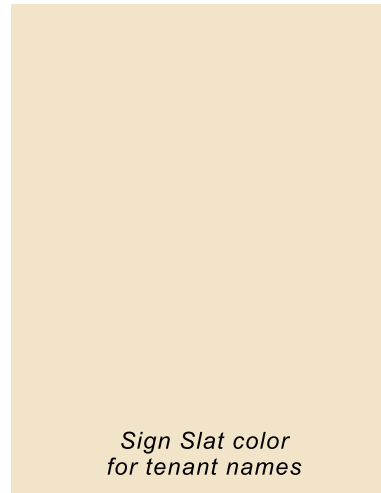
9862 Freeway Dr., Unit B  
Ph: 330-468-0556 • Fax: 330-468-0553  
graphics@signaramaohio.com

This design and drawing submitted for your review and approval is the exclusive property of Signarama. It may not be reproduced, copied, exhibited or utilized for any purpose, in part or in whole by any individual inside or outside without written consent of Signarama.

This is a color rendering of the design. Please note the colors are for viewing purposes ONLY. Actual colors will be different from the colors shown. Changes to the design may result in additional charges.



*Colors selected to match  
the buildings siding and trim  
(first 2 below)*



*Sign Slat color  
for tenant names*

Matte 38/15007  
Creme 303 \*\*\*

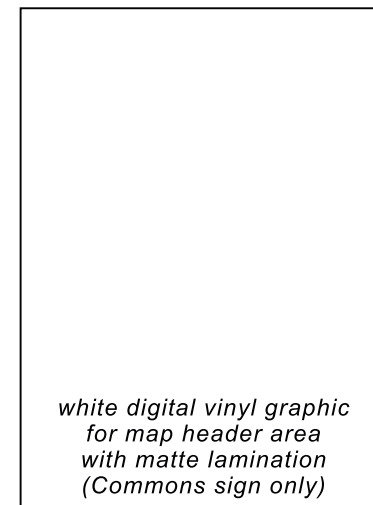


*Sign Frame & Post color*

Matte 38/15002  
Sierra Tan \*\*\*



*matte black vinyl for  
tenant names  
(both signs)*



*white digital vinyl graphic  
for map header area  
with matte lamination  
(Commons sign only)*





Great Clips  
KAREN SCHUBERT

Great Clips  
KAREN SCHUBERT

Rachelle Salem  
484-621-4972

Great Clips  
KAREN SCHUBERT

Great Clips  
KAREN SCHUBERT

Great Clips  
KAREN SCHUBERT

Great Clips  
KAREN SCHUBERT

Great Clips  
KAREN SCHUBERT





Existing Signs on Rt. 303



Existing Signs in Court Yard  
area overlooking ACME parking lot

This design and drawing submitted for your review and approval is the exclusive property of Signarama. It may not be reproduced, copied, exhibited or utilized for any purpose, in part or in whole by any individual inside or outside without written consent of Signarama.

This is a color rendering of the design. Please note the colors are for viewing purposes ONLY. Actual colors will be different from the colors shown. Changes to the design may result in additional charges.

Macedonia, OH  
**Signarama**  
The way to grow your business.

9862 Freeway Dr., Unit B

Ph: 330-468-0556 • Fax: 330-468-0553

graphics@signaramaohio.com