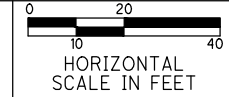


**LEGEND**

	ALTERNATIVE 1A		ALTERNATIVE 3A
	ALTERNATIVE 1B		ALTERNATIVE 3B
	ALTERNATIVE 2A		WETLAND
	ALTERNATIVE 2B		CURB

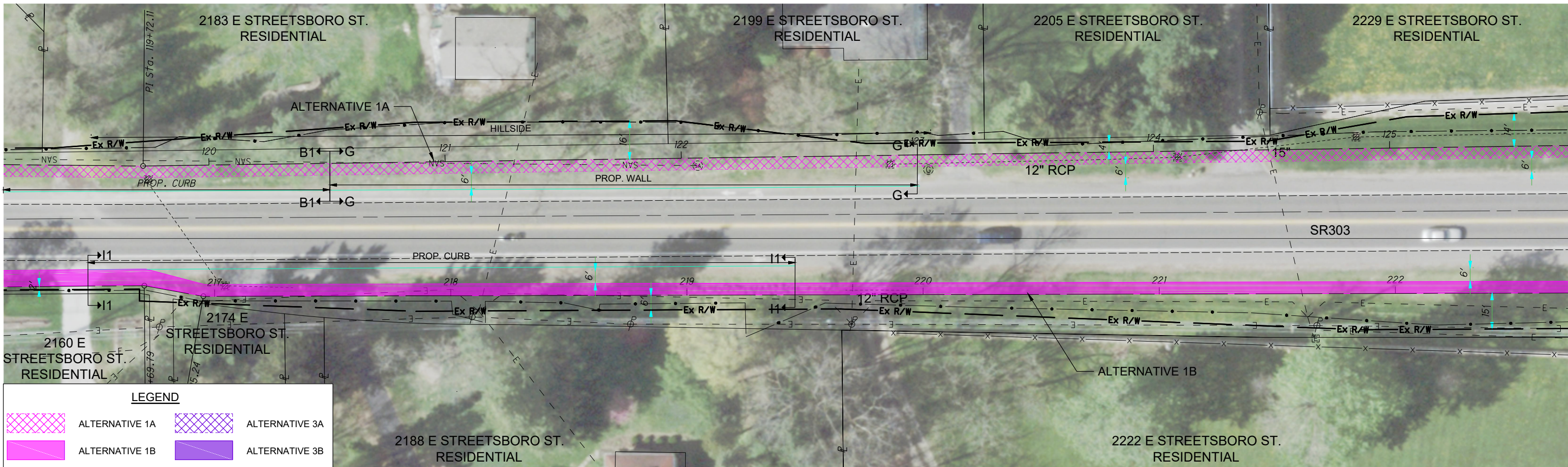
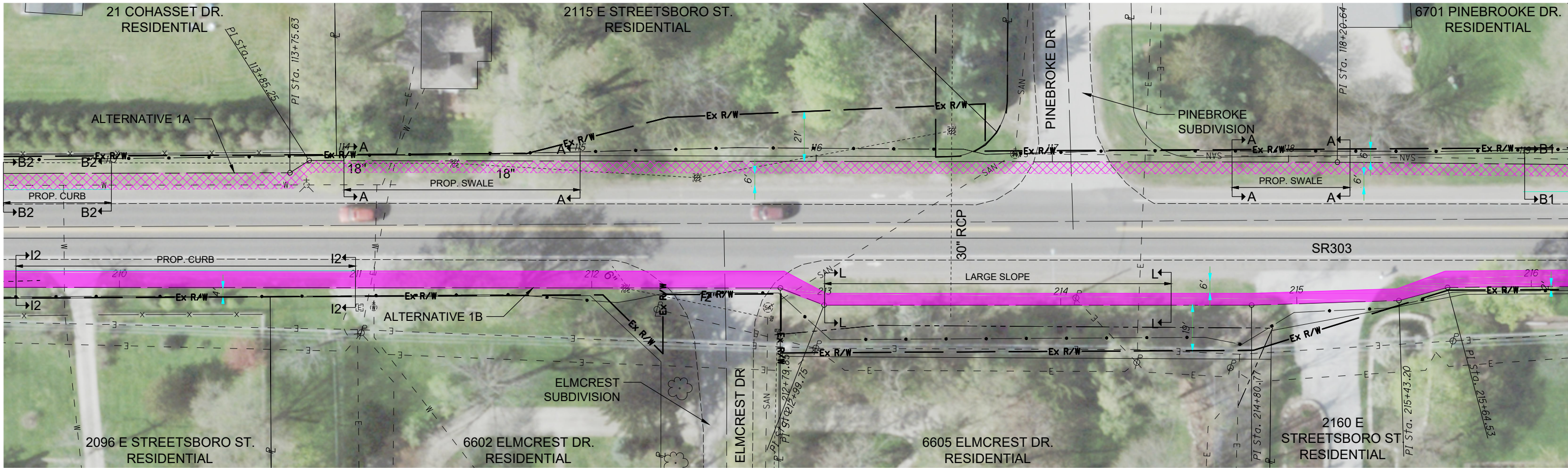
3009982 3009982 3009982



**STOW ROAD AND SR 303 / SR 303 - STOW TO STONE ROAD SIDEWALK IMPROVEMENTS**

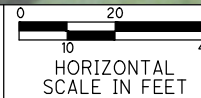
**SECTION 1: SR 303 (N HAYDEN PKWY TO STOW RD)**





**LEGEND**

	ALTERNATIVE 1A		ALTERNATIVE 3A
	ALTERNATIVE 1B		ALTERNATIVE 3B
	ALTERNATIVE 2A		WETLAND
	ALTERNATIVE 2B		CURB

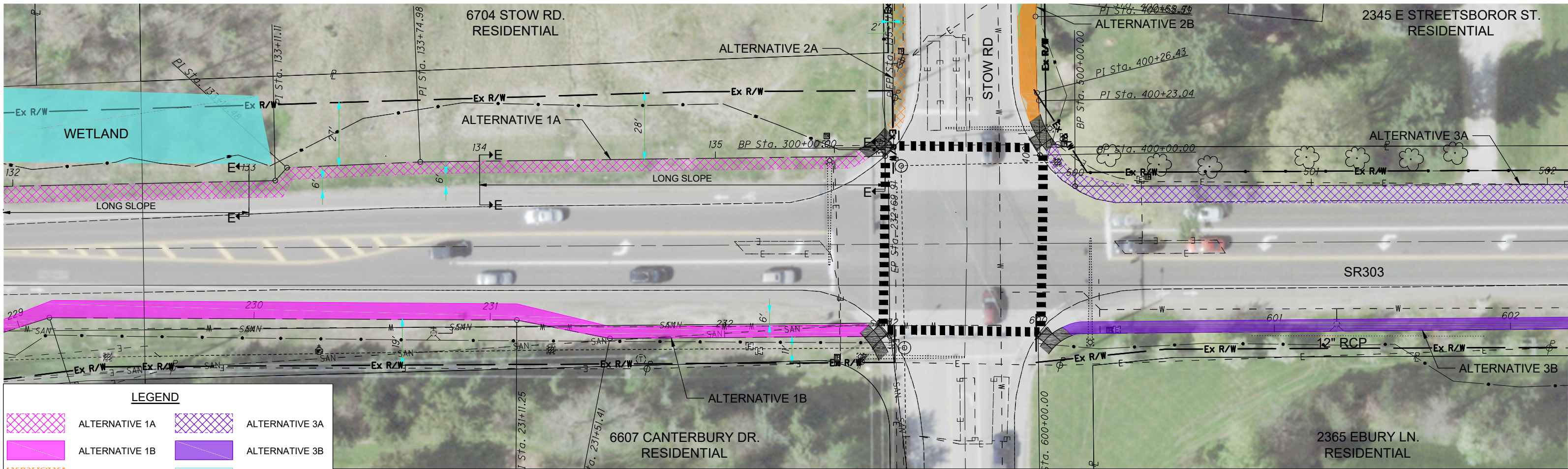
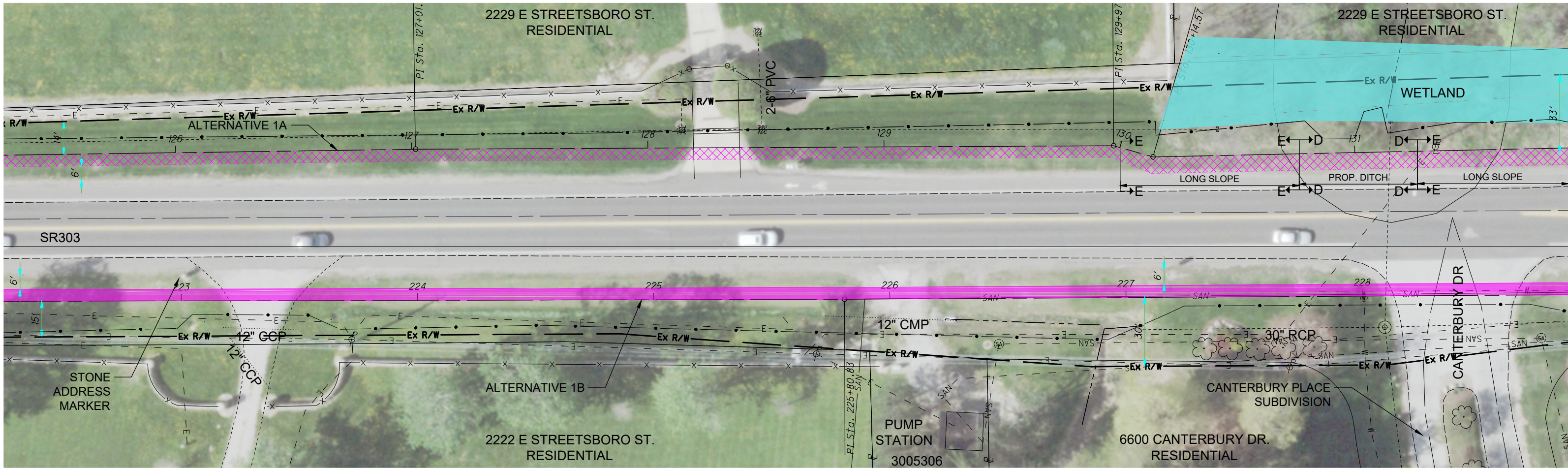


**AECOM**

**STOW ROAD AND SR 303 / SR 303 - STOW TO STONE  
ROAD SIDEWALK IMPROVEMENTS**

**SECTION 1: SR 303  
(N HAYDEN PKWY TO STOW RD)**





**LEGEND**

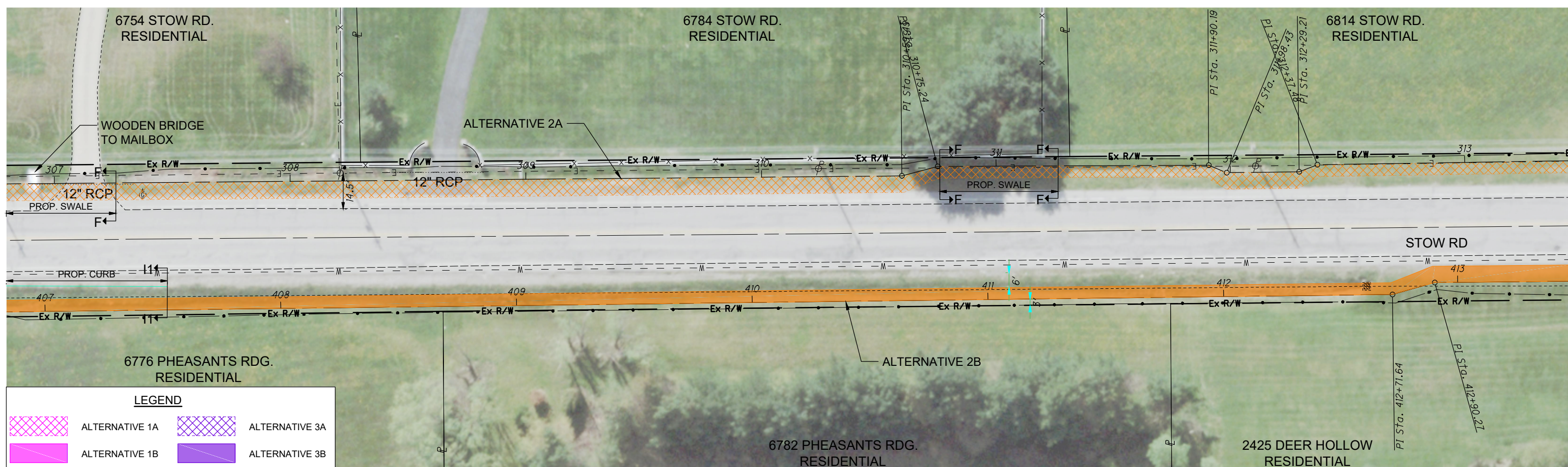
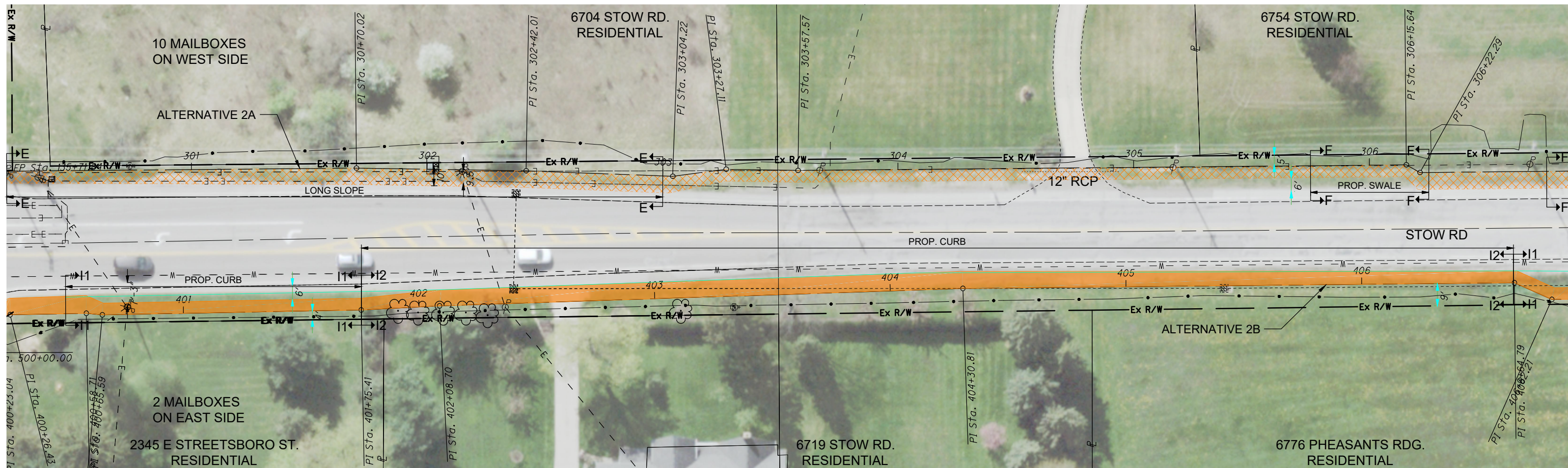
	ALTERNATIVE 1A		ALTERNATIVE 3A
	ALTERNATIVE 1B		ALTERNATIVE 3B
	ALTERNATIVE 2A		WETLAND
	ALTERNATIVE 2B		CURB



**STOW ROAD AND SR 303 / SR 303 - STOW TO STONE ROAD SIDEWALK IMPROVEMENTS**

**SECTION 1: SR 303 (N HAYDEN PKWY TO STOW RD)**





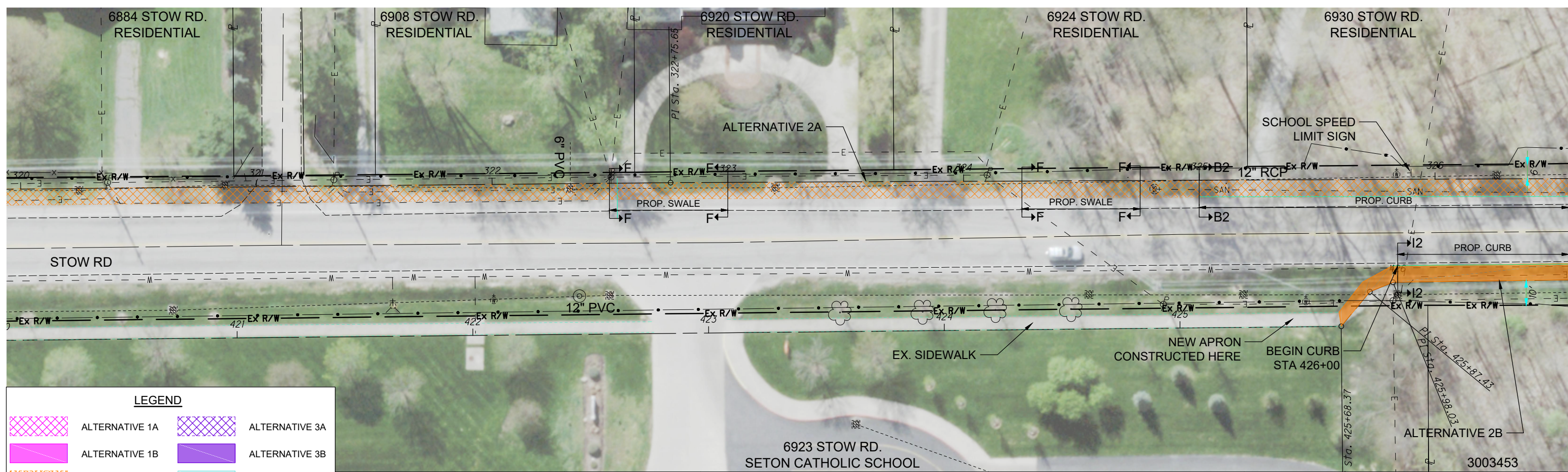
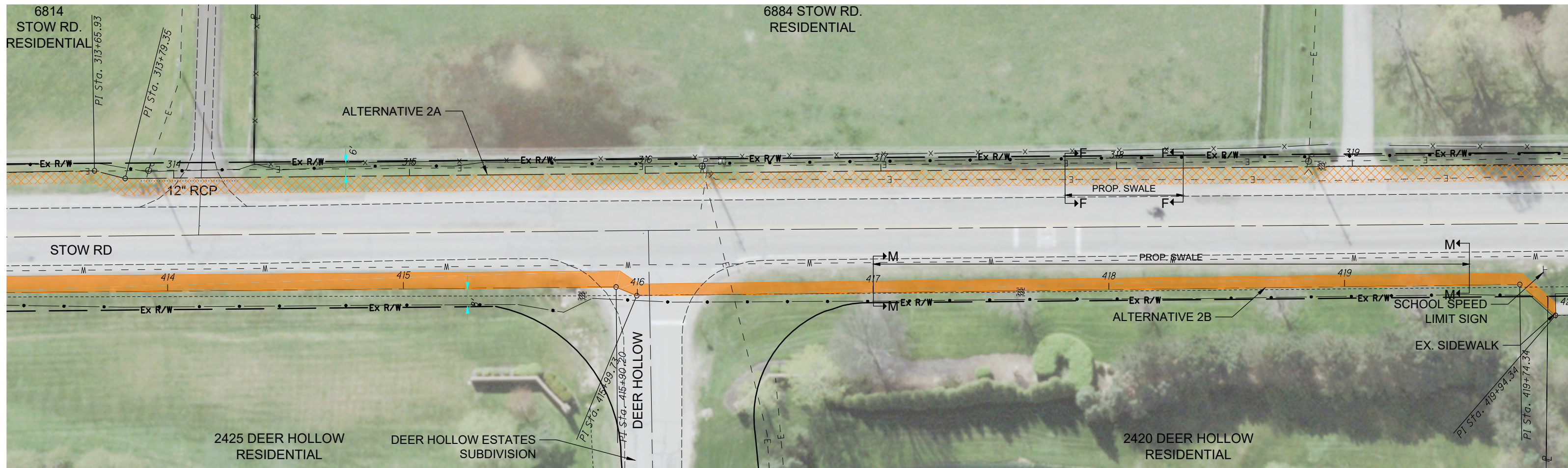
**LEGEND**

	ALTERNATIVE 1A		ALTERNATIVE 3A
	ALTERNATIVE 1B		ALTERNATIVE 3B
	ALTERNATIVE 2A		WETLAND
	ALTERNATIVE 2B		CURB

**STOW ROAD AND SR 303 / SR 303 - STOW TO STONE ROAD SIDEWALK IMPROVEMENTS**

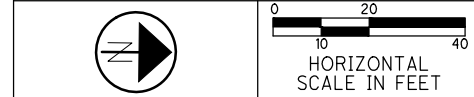
**SECTION 2: STOW RD (SR 303 TO HUDSON SPRINGS PARK)**





**LEGEND**

	ALTERNATIVE 1A		ALTERNATIVE 3A
	ALTERNATIVE 1B		ALTERNATIVE 3B
	ALTERNATIVE 2A		WETLAND
	ALTERNATIVE 2B		CURB

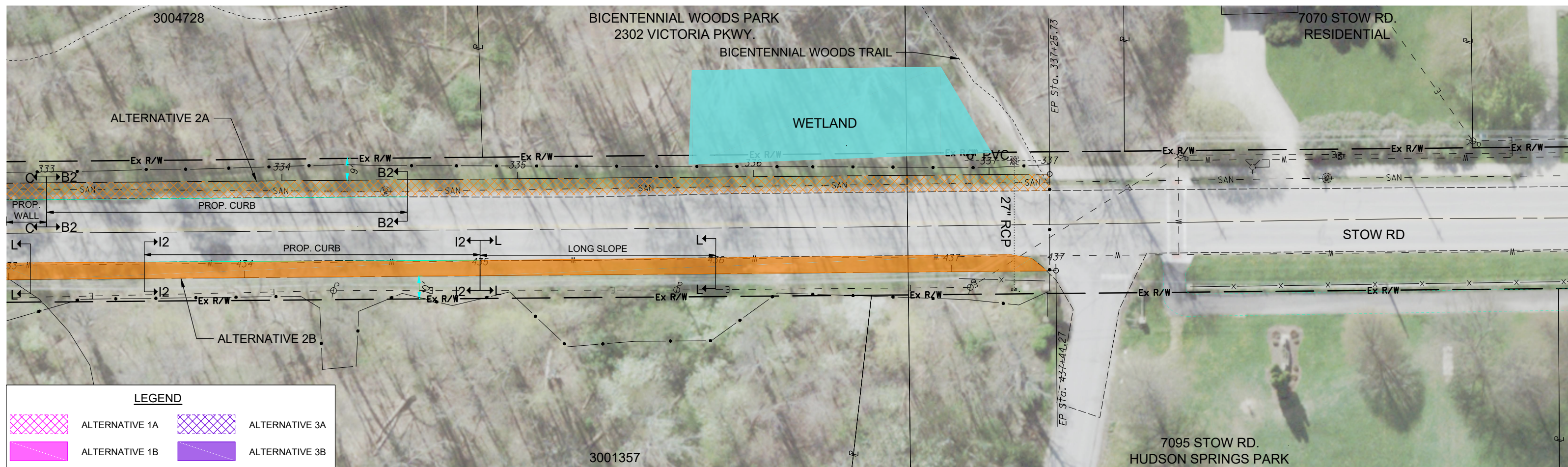
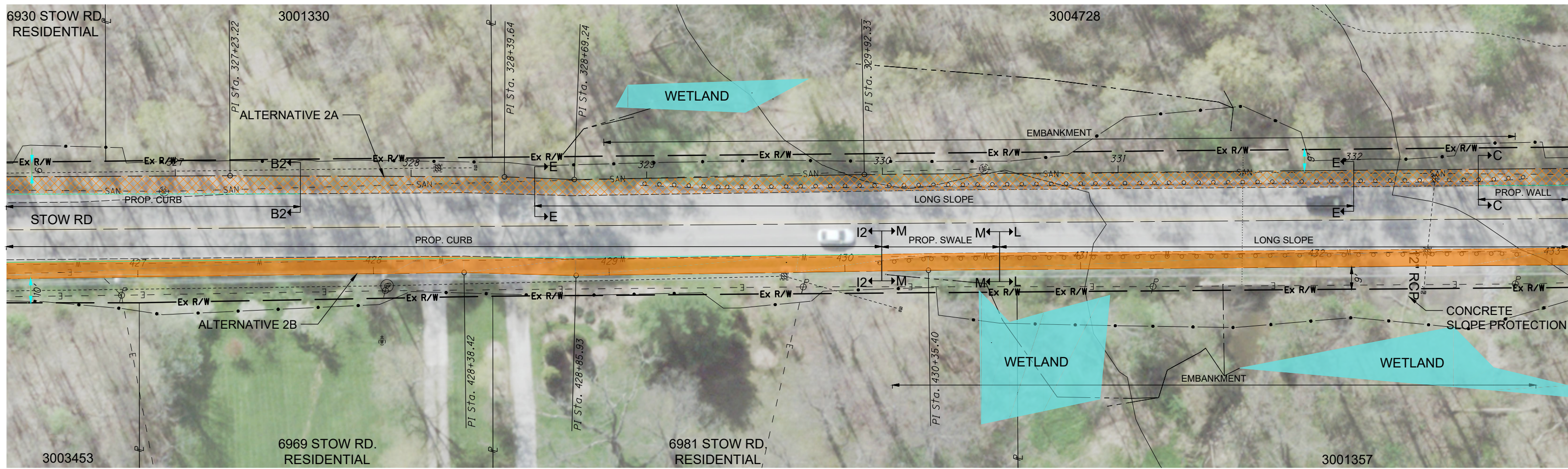


**STOW ROAD AND SR 303 / SR 303 - STOW TO STONE ROAD SIDEWALK IMPROVEMENTS**

**SECTION 2: STOW RD (SR 303 TO HUDSON SPRINGS PARK)**

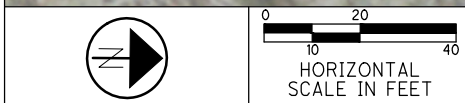
3003453





**LEGEND**

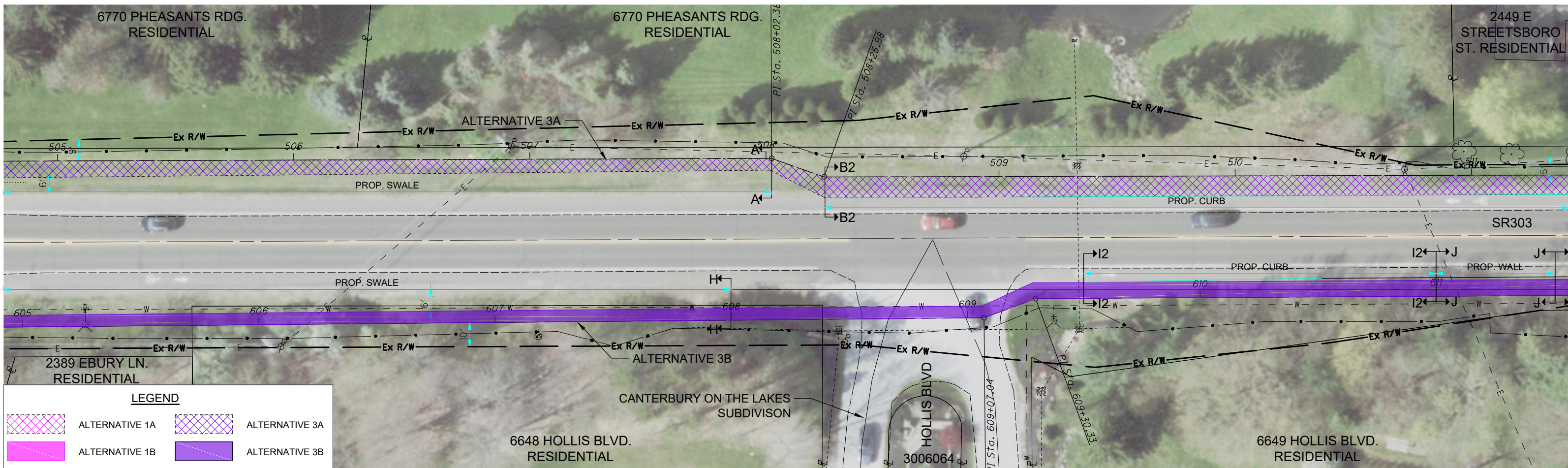
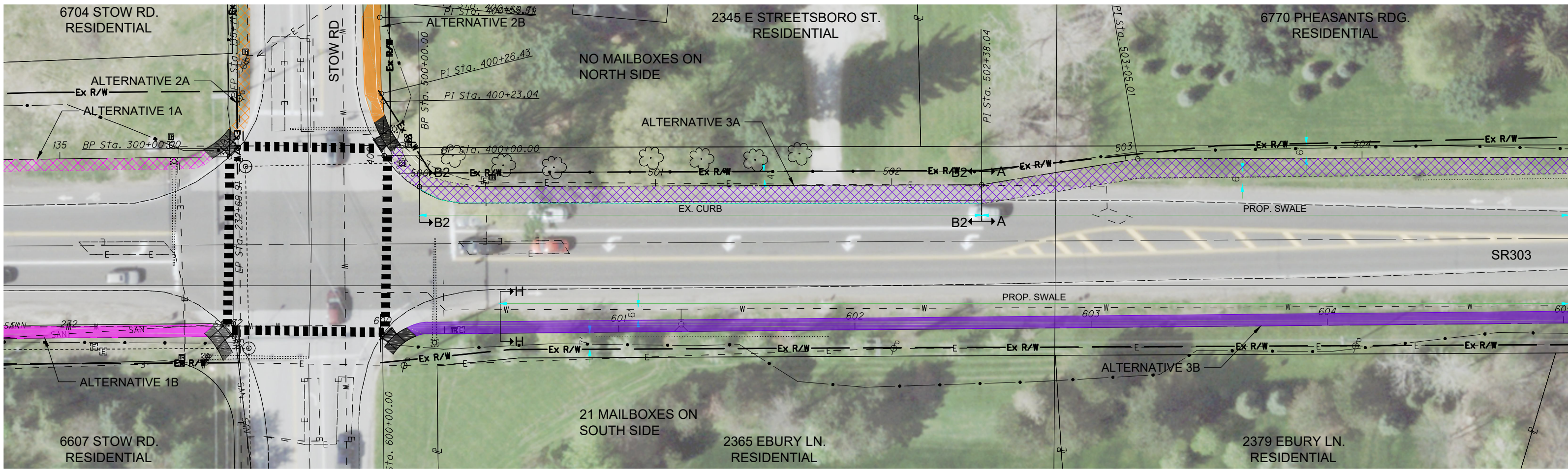
	ALTERNATIVE 1A		ALTERNATIVE 3A
	ALTERNATIVE 1B		ALTERNATIVE 3B
	ALTERNATIVE 2A		WETLAND
	ALTERNATIVE 2B		CURB



**STOW ROAD AND SR 303 / SR 303 - STOW TO STONE ROAD SIDEWALK IMPROVEMENTS**

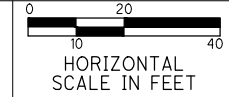
**SECTION 2: STOW RD (SR 303 TO HUDSON SPRINGS PARK)**





**LEGEND**

	ALTERNATIVE 1A		ALTERNATIVE 3A
	ALTERNATIVE 1B		ALTERNATIVE 3B
	ALTERNATIVE 2A		WETLAND
	ALTERNATIVE 2B		CURB

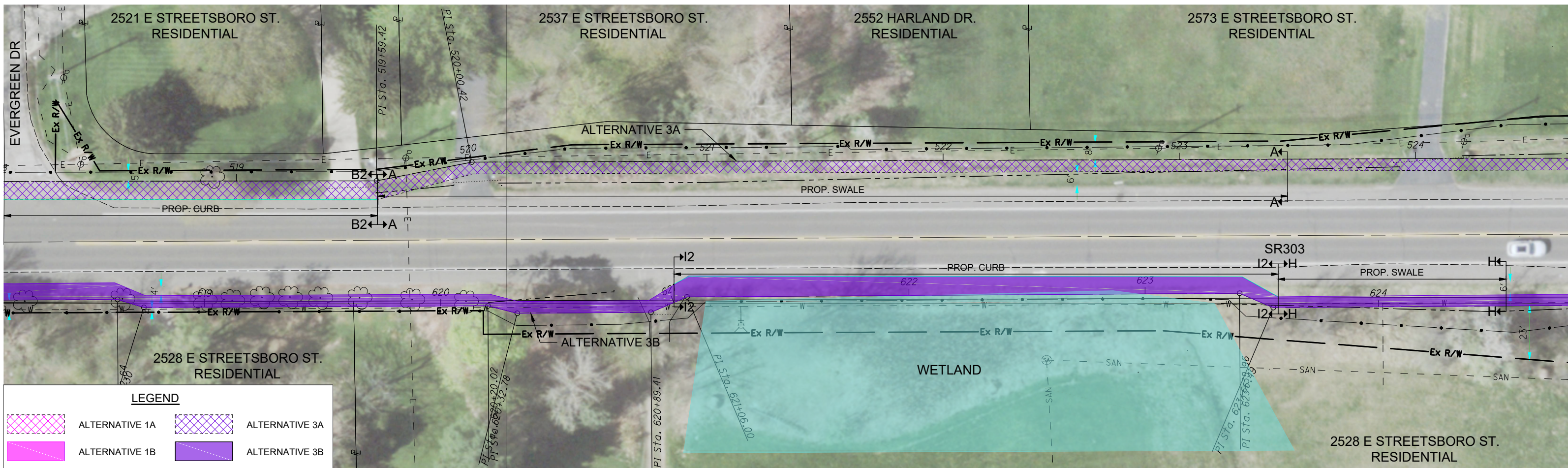
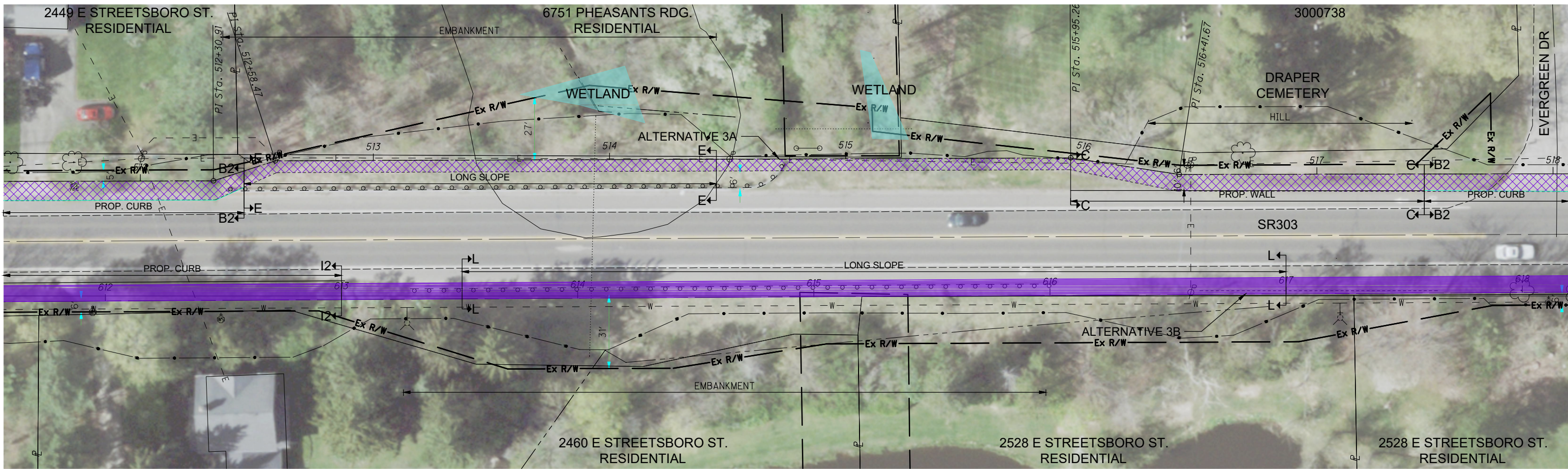


**AECOM**

**STOW ROAD AND SR 303 / SR 303 - STOW TO STONE ROAD SIDEWALK IMPROVEMENTS**

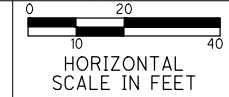
**SECTION 3: SR 303 (STOW RD TO STONE RD)**





**LEGEND**

	ALTERNATIVE 1A		ALTERNATIVE 3A
	ALTERNATIVE 1B		ALTERNATIVE 3B
	ALTERNATIVE 2A		WETLAND
	ALTERNATIVE 2B		CURB

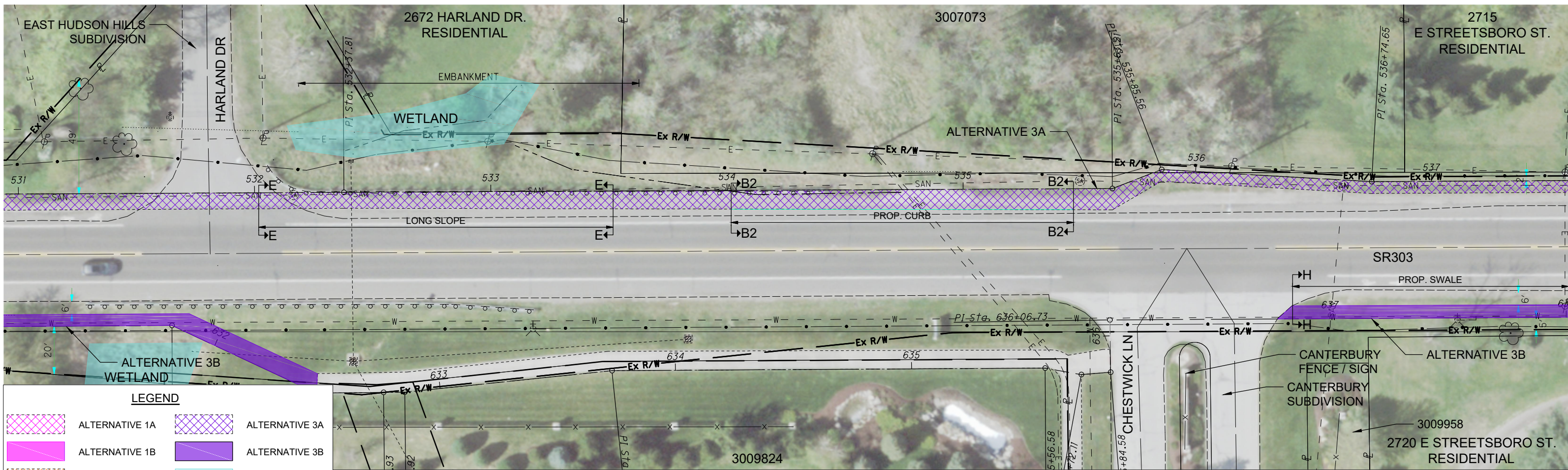
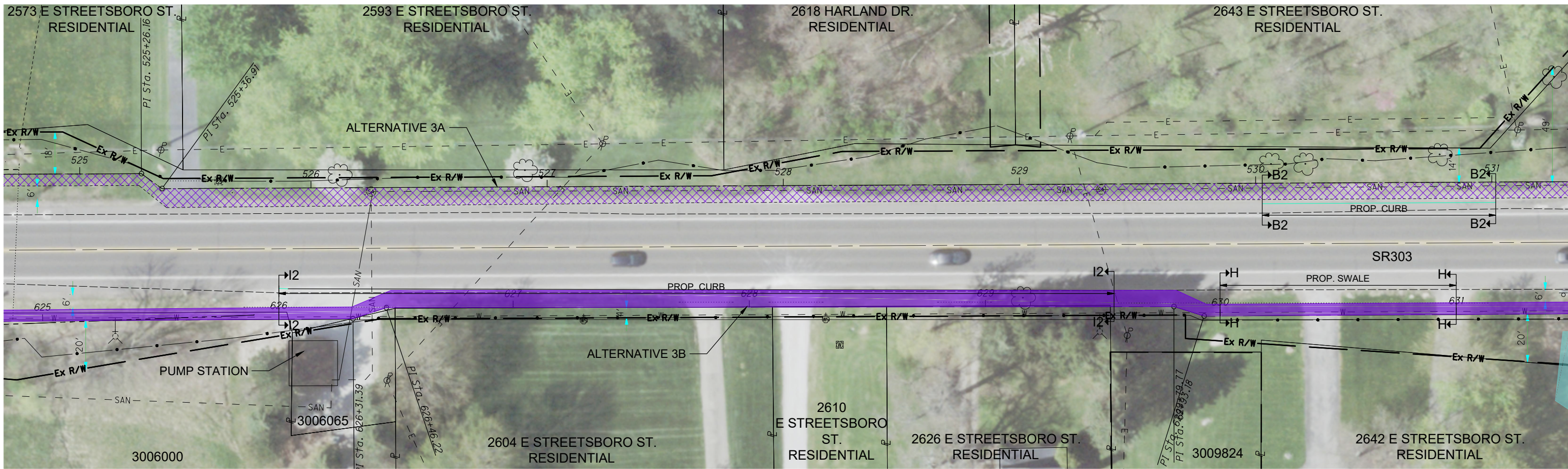


**AECOM**

**STOW ROAD AND SR 303 / SR 303 - STOW TO STONE ROAD SIDEWALK IMPROVEMENTS**

**SECTION 3: SR 303 (STOW RD TO STONE RD)**





**LEGEND**

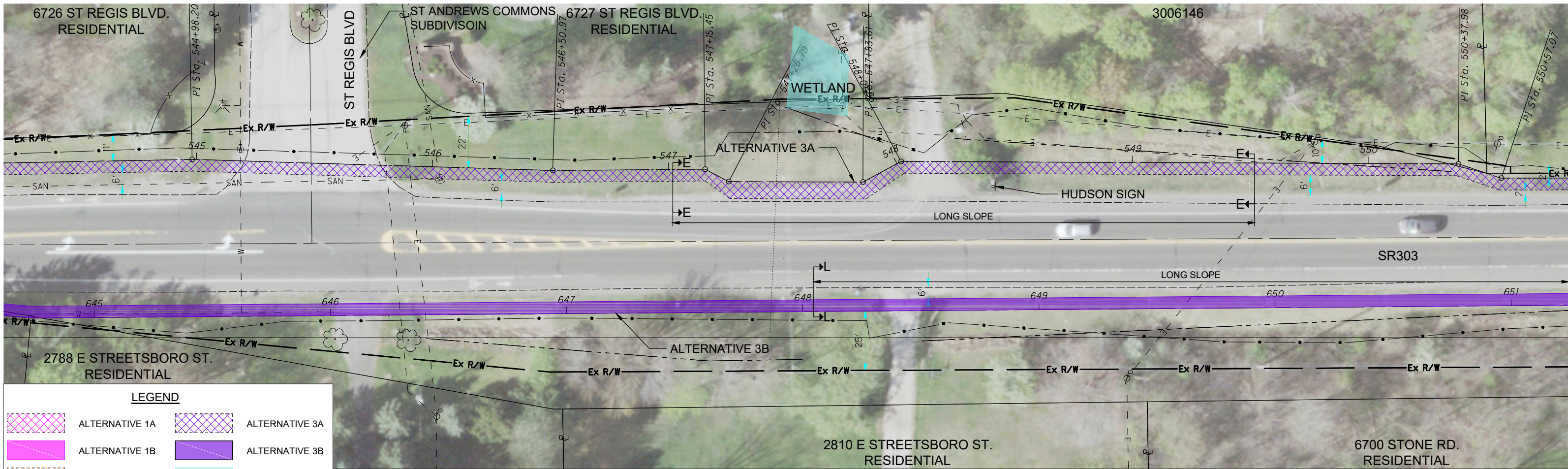
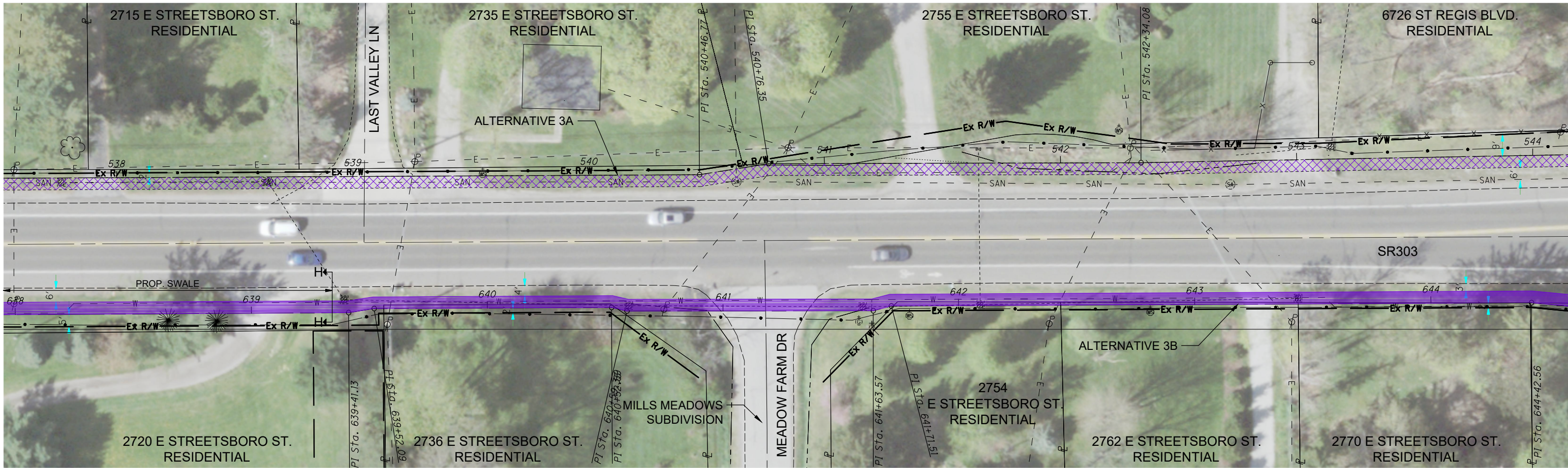
	ALTERNATIVE 1A		ALTERNATIVE 3A
	ALTERNATIVE 1B		ALTERNATIVE 3B
	ALTERNATIVE 2A		WETLAND
	ALTERNATIVE 2B		CURB



**STOW ROAD AND SR 303 / SR 303 - STOW TO STONE ROAD SIDEWALK IMPROVEMENTS**

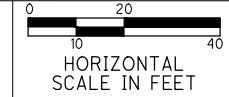
**SECTION 3: SR 303 (STOW RD TO STONE RD)**





**LEGEND**

	ALTERNATIVE 1A		ALTERNATIVE 3A
	ALTERNATIVE 1B		ALTERNATIVE 3B
	ALTERNATIVE 2A		WETLAND
	ALTERNATIVE 2B		CURB



**STOW ROAD AND SR 303 / SR 303 - STOW TO STONE ROAD SIDEWALK IMPROVEMENTS**

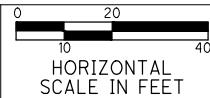
**SECTION 3: SR 303 (STOW RD TO STONE RD)**





**LEGEND**

	ALTERNATIVE 1A		ALTERNATIVE 3A
	ALTERNATIVE 1B		ALTERNATIVE 3B
	ALTERNATIVE 2A		WETLAND
	ALTERNATIVE 2B		CURB



STOW ROAD AND SR 303 / SR 303 - STOW TO STONE  
ROAD SIDEWALK IMPROVEMENTS

SECTION 3: SR 303  
(STOW RD TO STONE RD)