



---

# LAUREL LAKE VILLAS

## HUDSON, OHIO

**AHBR DESIGN REVIEW**  
**MAY 27TH, 2026**

### OWNER:

LAUREL LAKE RETIREMENT COMMUNITY  
HUDSON, OHIO  
Anthony Berardi – CEO  
Donna Anderson – Director of Marketing

### ARCHITECT:

RDL ARCHITECTS, INC.  
BEACHWOOD, OHIO  
Eileen Nacht, AIA LEED AP, EDAC  
John Ducatman, RA  
Michal Tannenbaum, Designer

### CIVIL:

RIVERSTONE  
CLEVELAND, OHIO  
Jeff Jardine, Project Engineer

# AGENDA



01 APPROVED SITE PLAN

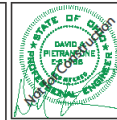
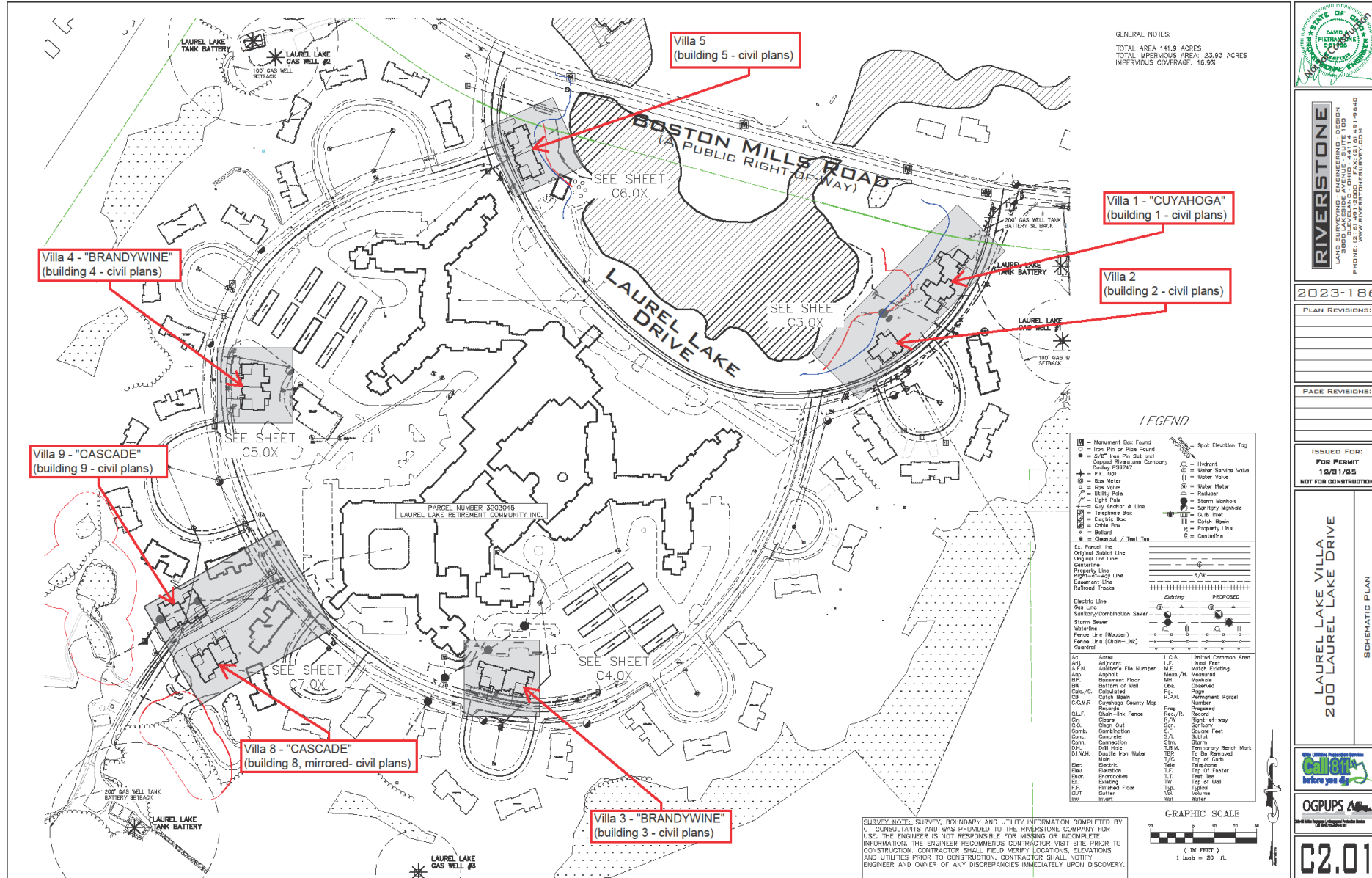
02 VILLA DESIGNS

03 EXTERIOR FINISHES

01

APPROVED SITE PLAN

# SITE PLAN / COTTAGE LOCATIONS



**RIVERSTONE**  
 LAND SURVEYING - ENGINEERING - DESIGN  
 10000 CLEVELAND DRIVE, SUITE 100  
 CLEVELAND, OHIO 44115  
 PHONE: 216.781.1940  
 WWW.RIVERSTONEURVY.COM

2023-186

PLAN REVISIONS:

PAGE REVISIONS:

ISSUED FOR:  
 FOR PERMIT  
 12/8/23  
 NOT FOR CONSTRUCTION

LAUREL LAKE VILLA  
 200 LAUREL LAKE DRIVE  
 SCHEMATIC PLAN



OGPUPS

C2.01

02

VILLA DESIGNS

# STAFF COMMENTS 2026

## Cuyahoga - Villa 1

1. Section IV-3 (b)(3) – Forward facing garages.
2. Section IV-3 (b)(2) – Front Faceoff main body is 18” in front of all wings.
3. Section IV-3(b) – Main body must be largest mass.
4. Section IV-3(d)(3) – Material used must be consistent on all sides.
5. Section III-1(g)(3) – Sunroom foundation material.
6. Window trim – Consistent on all elevations.
7. Section IV-3(c) – Roof to be same shape as main body.

## Villa 2

1. Section IV-3(g)(2) – 5’ projections treated as wings
2. Section IV-3(e)(4) – Typical window for most windows
3. Section IV-3(f)(1) – Consistent detail applied throughout
4. Section III-1(d)(5) – Fenestration every 12’
5. Section IV-3(c) – Roof to be same shape as main body.
6. Section III-1(g)(3) – Sunroom foundation material.
7. Window trim – Consistent on all elevations.
8. Section III-1(g)(3) – Sunroom foundation material.

## Brandywine - Villa 3

1. Section IV-3 (b)(3) – Forward facing garages.
2. Section IV-3 (b)(2) – Front Faceoff main body is 18” in front of all wings.
3. Section IV-3(g)(2) – 5’ projections treated as wings
4. Section III-1(d)(5) – Fenestration every 12’
5. Section IV-3(c) – Roof to be same shape as main body.
6. Section III-1(g)(3) – Sunroom foundation material.
7. Window trim – Consistent on all elevations.

## Brandywine - Villa 4

1. Section IV-3 (b)(3) – Forward facing garages.
2. Section IV-3 (b)(2) – Front Faceoff main body is 18” in front of all wings.
3. Section III-1(d)(5) – Fenestration every 12’
4. Section IV-3(c) – Roof to be same shape as main body.
5. Section III-1(g)(3) – Sunroom foundation material.
6. Window trim – Consistent on all elevations.

## Villa 5

1. Section IV-3 (b)(3) – Forward facing garages.
2. Section IV-3(g)(2) – 5’ projections treated as wings
3. Section III-1(g)(3) – Sunroom foundation material.
4. Section IV-3(f)(1) – Consistent detail applied throughout
5. Section IV-3(c) – Roof to be same shape as main body.
6. Section III-1(g)(3) – Sunroom foundation material.
7. Window trim – Consistent on all elevations.

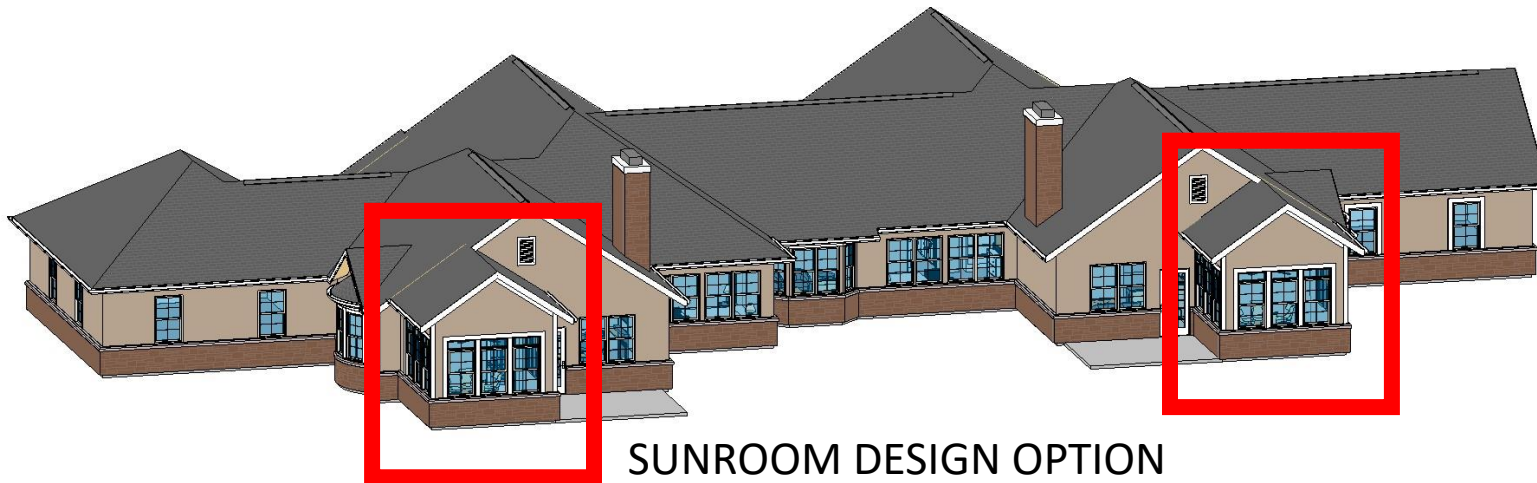
## Cascade - Villa 8 & 9

1. Section IV-3 (b)(3) – Forward facing garages.
2. Section IV-3 (b)(2) – Front Faceoff main body is 18” in front of all wings.
3. Section III-1(d)(5) – Fenestration every 12’
4. Section IV-3(c) – Roof to be same shape as main body.
5. Section III-1(g)(3) – Sunroom foundation material.

# CUYAHOGA, VILLA 1 – DESIGN OPTIONS



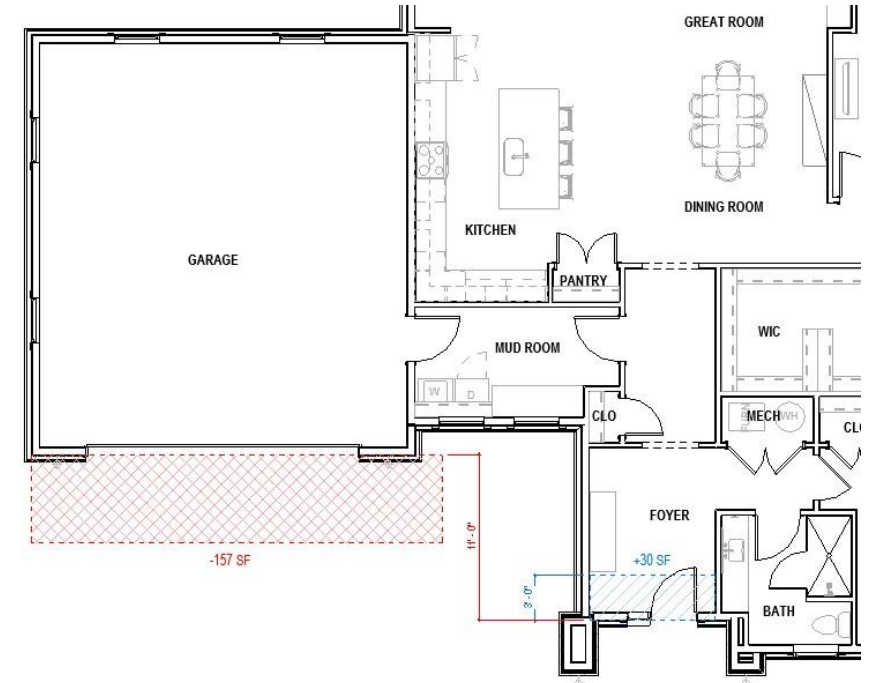
FRONT ENTRY DESIGN OPTION



SUNROOM DESIGN OPTION

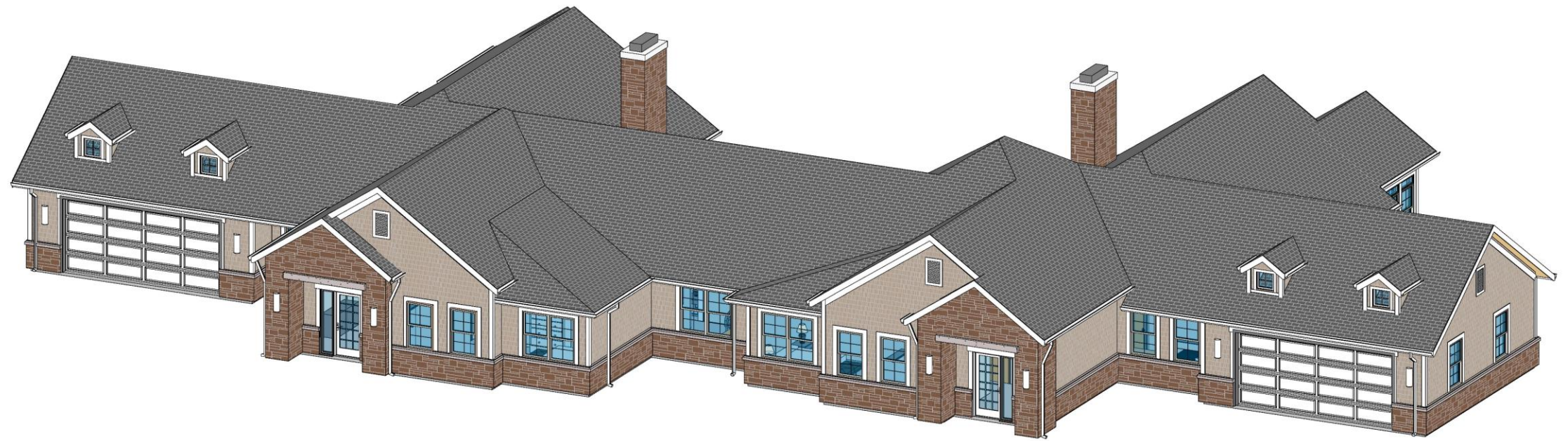
## STAFF COMMENTS

1. Section IV-3 (b)(3) – Forward facing garages.
2. Section IV-3 (b)(2) – Front Faceoff main body is 18" in front of all wings.
3. Section IV-3(b) – Main body must be largest mass.
4. Section IV-3(d)(3) – Material used must be consistent on all sides.
5. Section III-1(g)(3) – Sunroom foundation material.
6. Window trim – Consistent on all elevations.
7. Section IV-3(c) – Roof to be same shape as main body.



FLOOR PLAN DESIGN OPTION

# CUYAHOGA, VILLA 1 – REVISED FRONT VIEW



# CUYAHOGA, VILLA 1 – REVISED BACK VIEW



# CUYAHOGA, VILLA 1 – REVISED ELEVATIONS



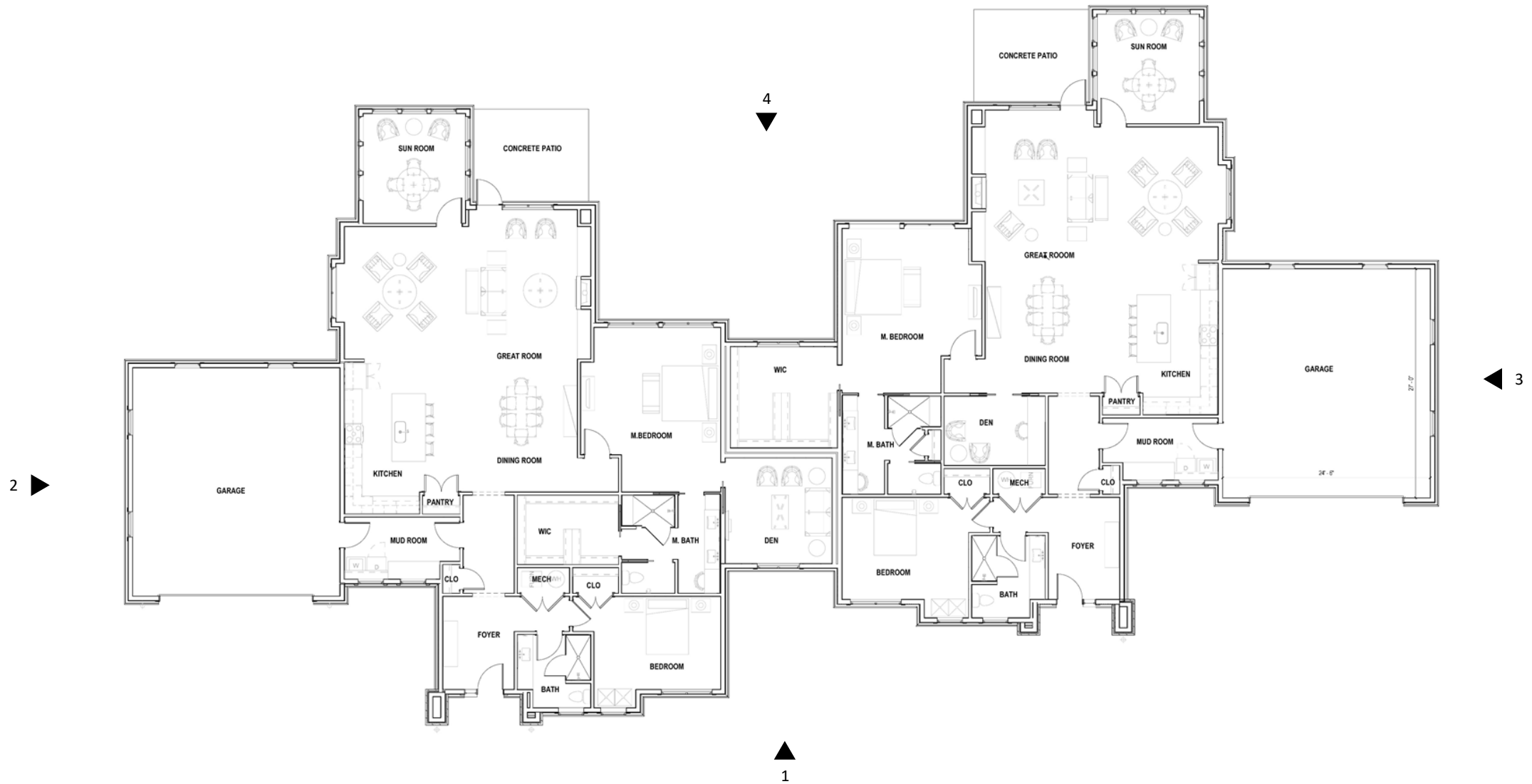
1 FRONT ELEVATION  
3/16" = 1'-0"

3 RIGHT ELEVATION  
3/16" = 1'-0"

2 LEFT ELEVATION  
3/16" = 1'-0"

4 REAR ELEVATION  
3/16" = 1'-0"

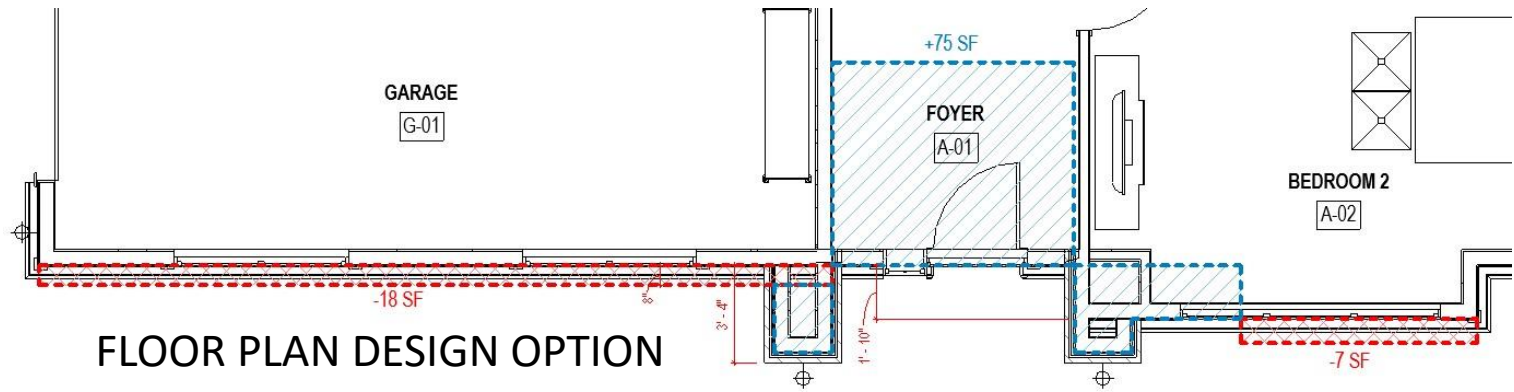
# CUYAHOGA, VILLA 1 – REVISED FLOOR PLAN



# VILLA 2 – DESIGN OPTIONS



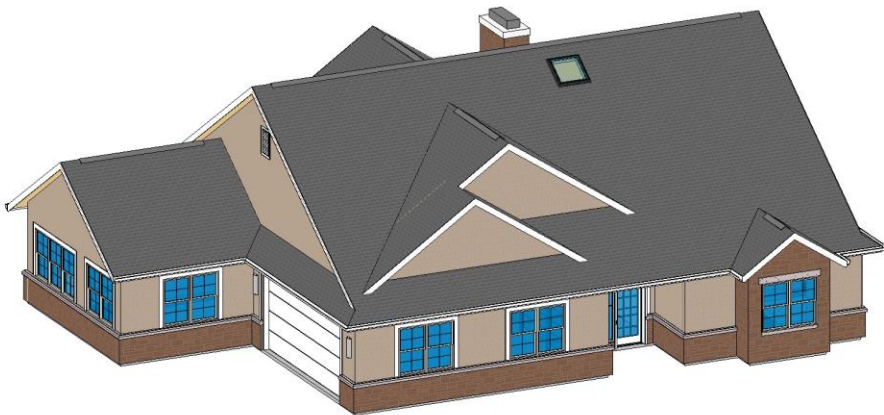
FRONT ENTRY DESIGN OPTION



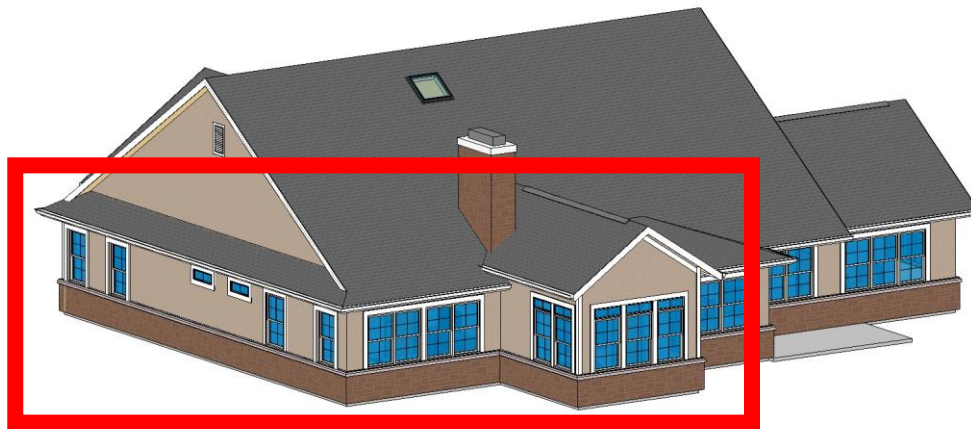
FLOOR PLAN DESIGN OPTION

## STAFF COMMENTS

1. Section IV-3(g)(2) – 5' projections treated as wings
2. Section IV-3(e)(4) – Typical window for most windows
3. Section IV-3(f)(1) – Consistent detail applied throughout
4. Section III-1(d)(5) – Fenestration every 12'
5. Section IV-3(c) – Roof to be same shape as main body.
6. Section III-1(g)(3) – Sunroom foundation material.
7. Window trim – Consistent on all elevations.
8. Section III-1(g)(3) – Sunroom foundation material.



SUBMITTED DESIGN

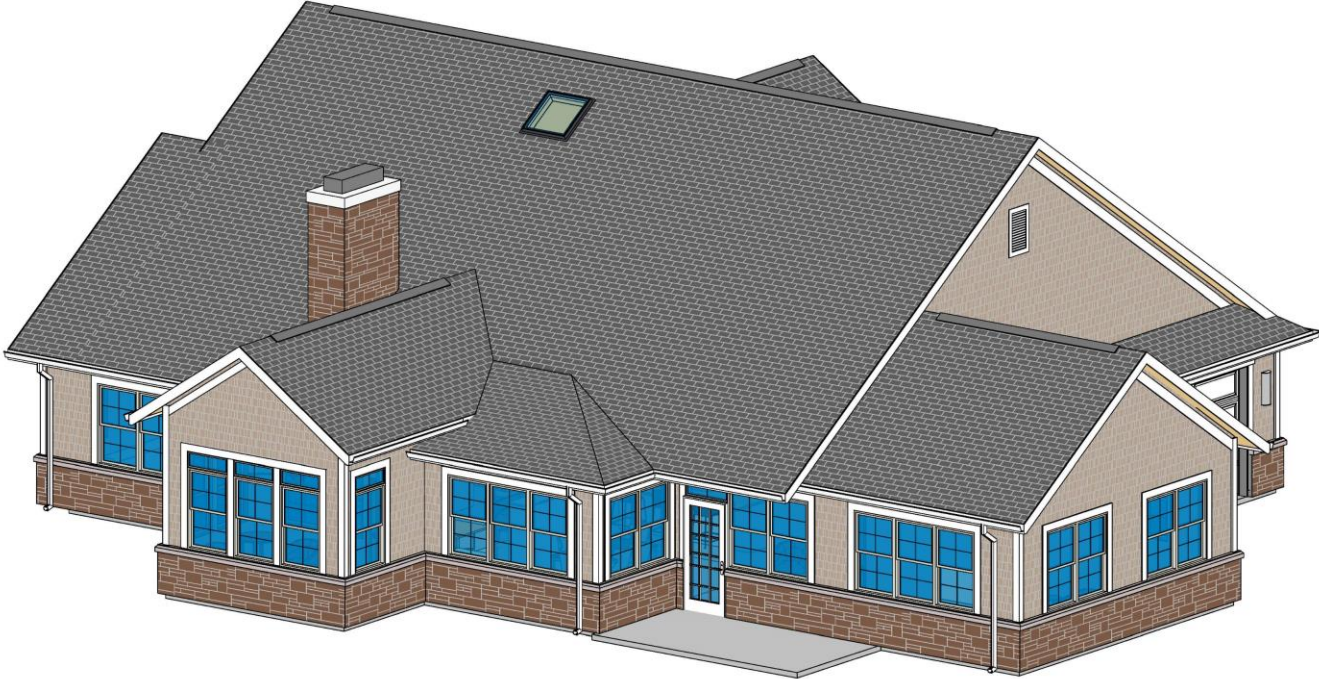


SUNROOM DESIGN OPTION

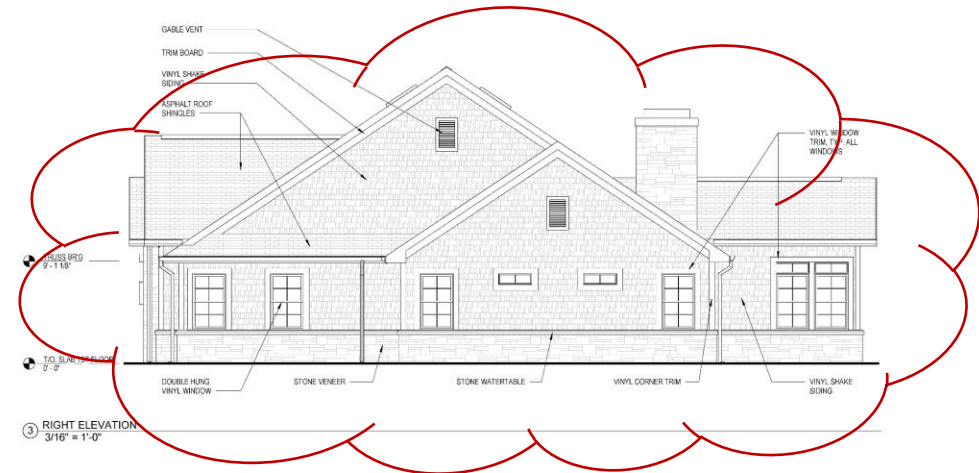
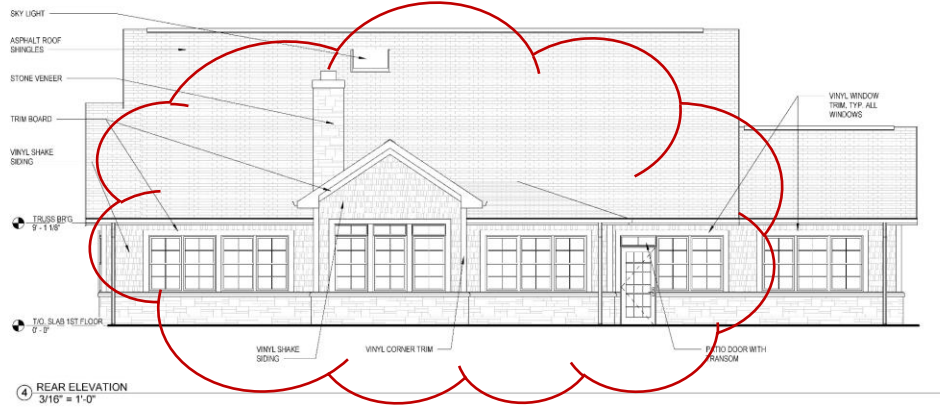
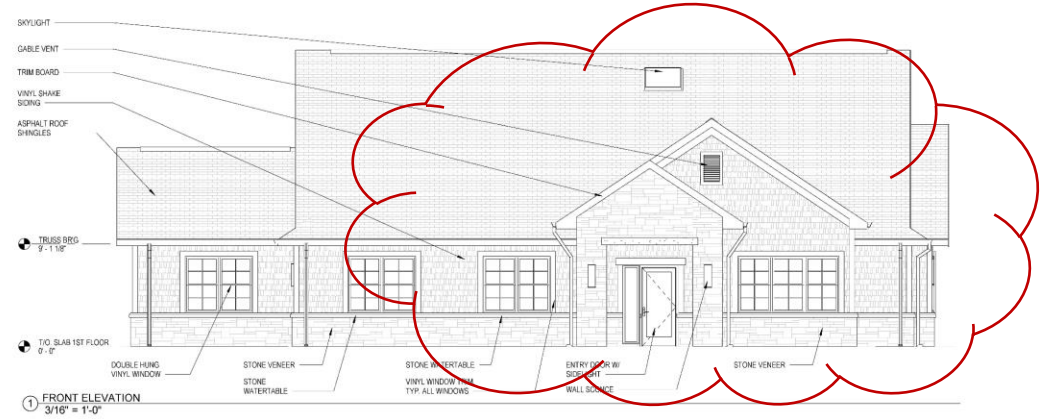
# VILLA 2 - REVISED FRONT VIEW



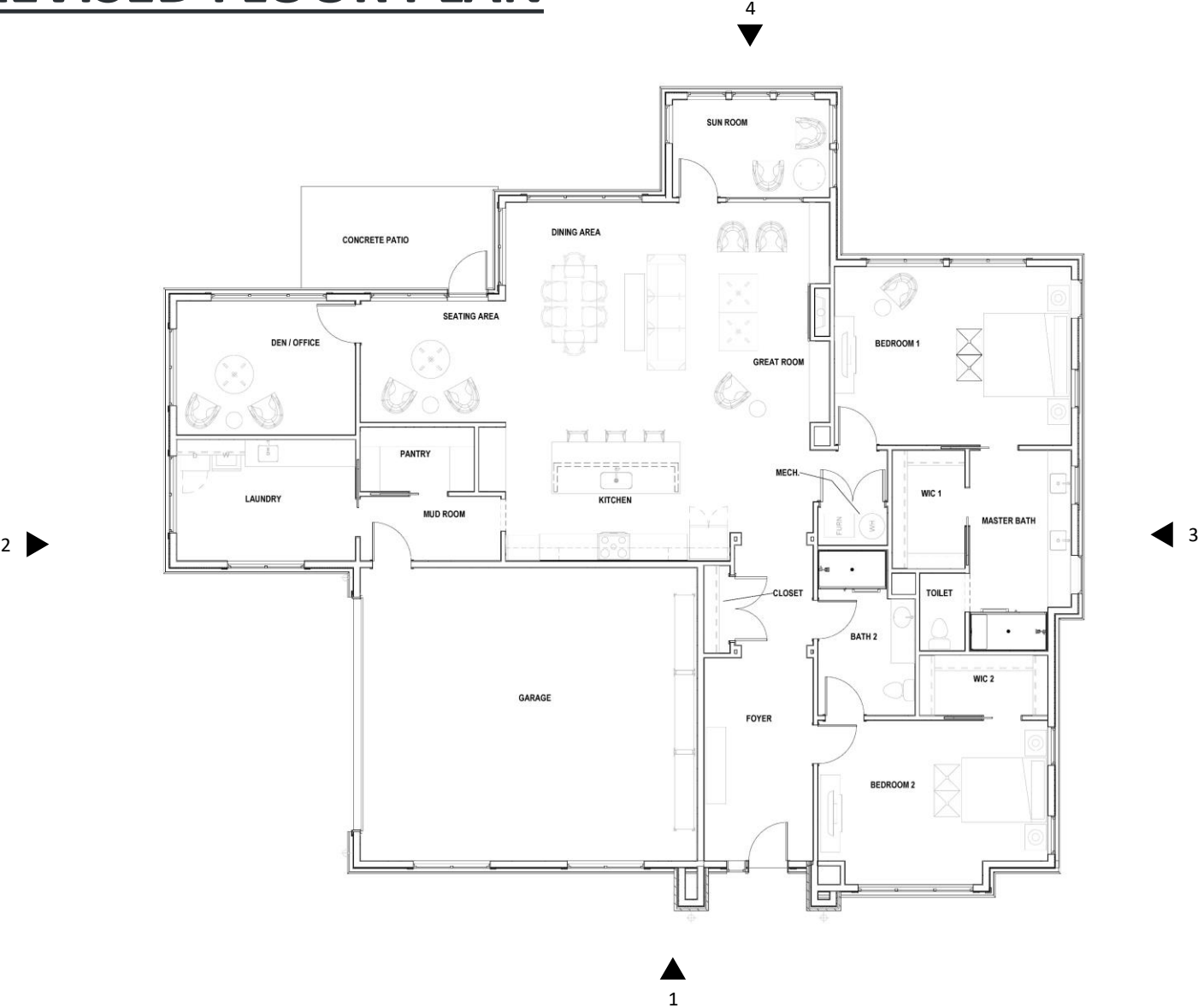
VILLA 2 – REVISED BACK VIEW



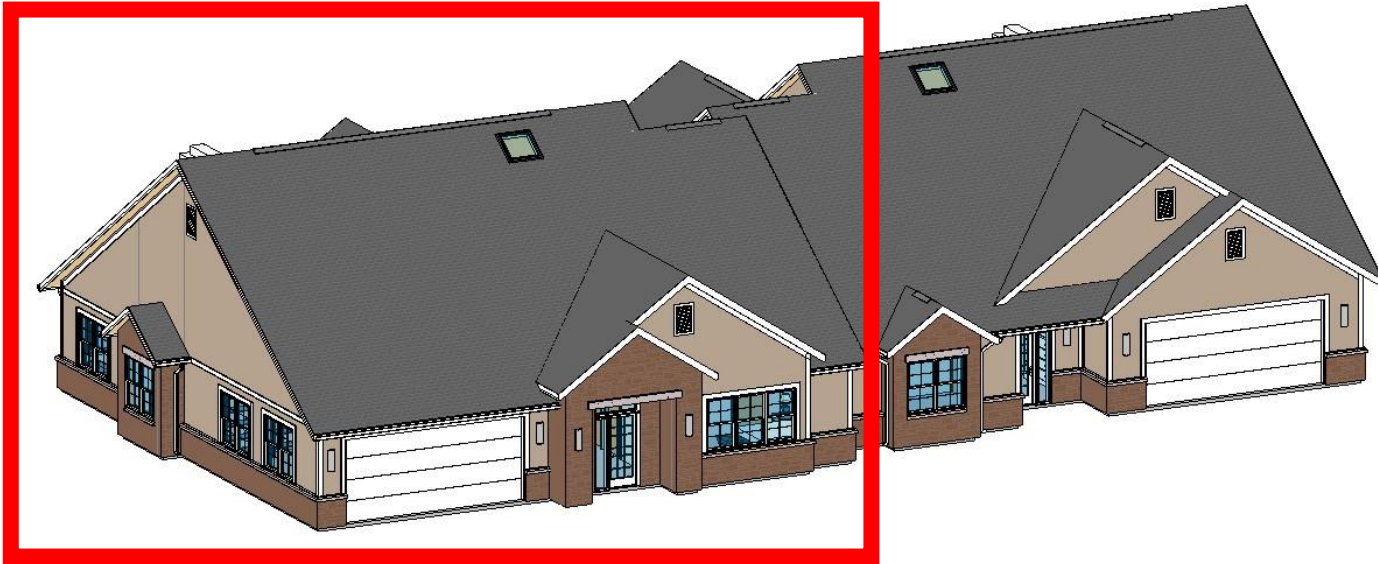
# VILLA 2 – REVISED ELEVATIONS



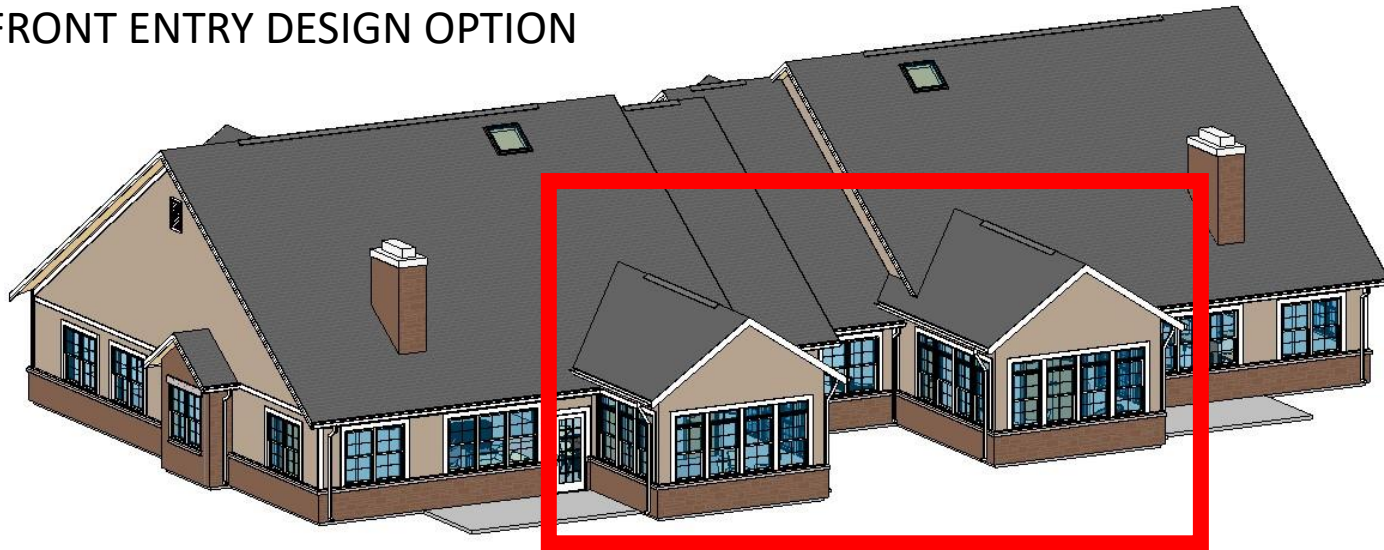
# VILLA 2 – REVISED FLOOR PLAN



# BRANDYWINE, VILLA 3 – DESIGN OPTIONS



FRONT ENTRY DESIGN OPTION



SUNROOM DESIGN OPTION

## STAFF COMMENTS

### VILLA 3

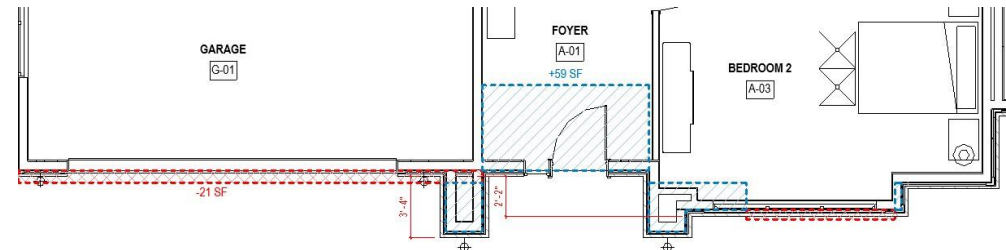
1. Section IV-3 (b)(3) – Forward facing garages.
2. Section IV-3 (b)(2) – Front Faceoff main body is 18” in front of all wings.
3. Section IV-3(g)(2) – 5’ projections treated as wings
4. Section III-1(d)(5) – Fenestration every 12’
5. Section IV-3(c) – Roof to be same shape as main body.
6. Section III-1(g)(3) – Sunroom foundation material.
7. Window trim – Consistent on all elevations.

### VILLA 4

1. Section IV-3 (b)(3) – Forward facing garages.
2. Section IV-3 (b)(2) – Front Faceoff main body is 18” in front of all wings.
3. Section III-1(d)(5) – Fenestration every 12’
4. Section IV-3(c) – Roof to be same shape as main body.
5. Section III-1(g)(3) – Sunroom foundation material.
6. Window trim – Consistent on all elevations.

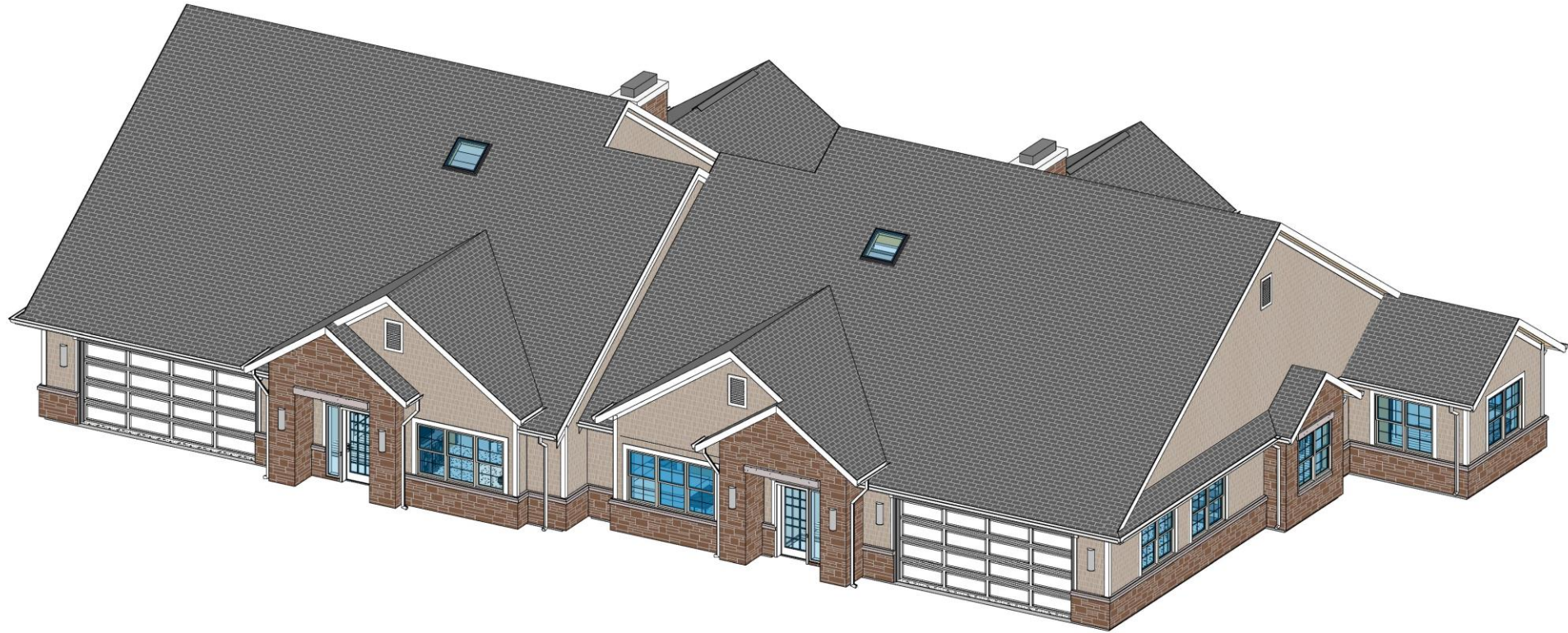


VILLA 3 - REAR

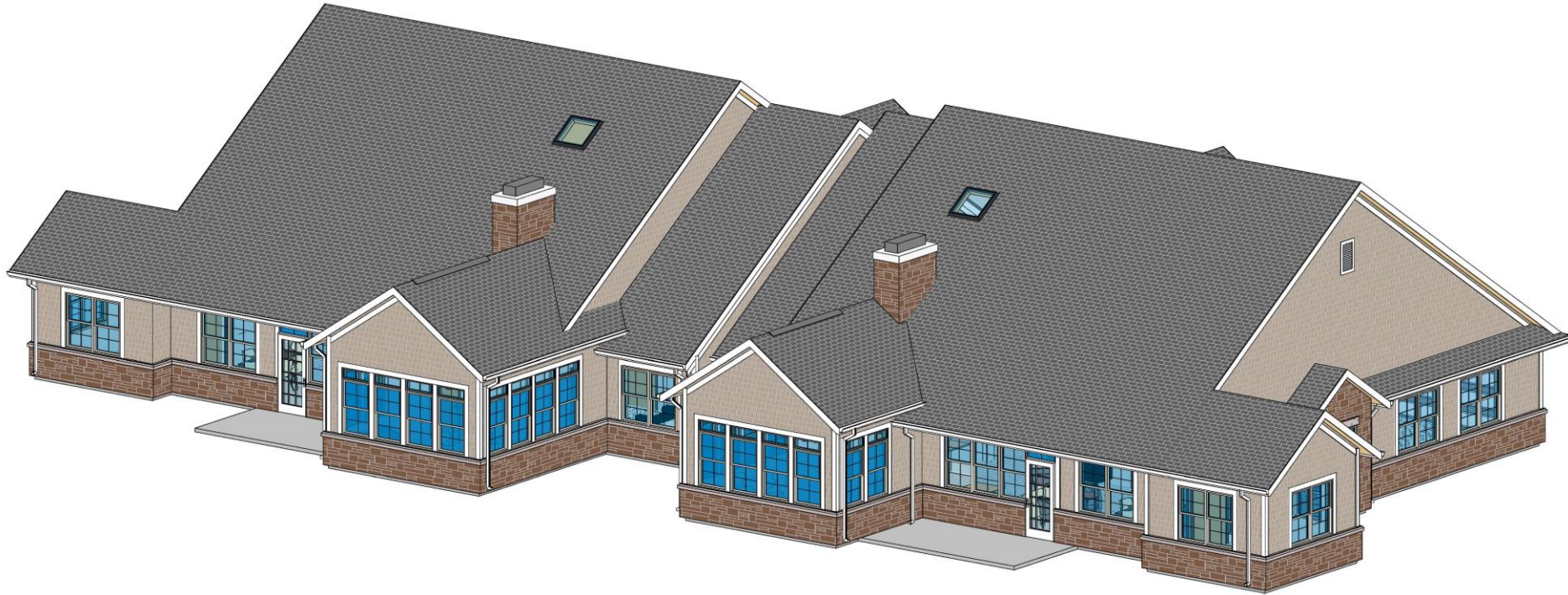


FLOOR PLAN DESIGN OPTION

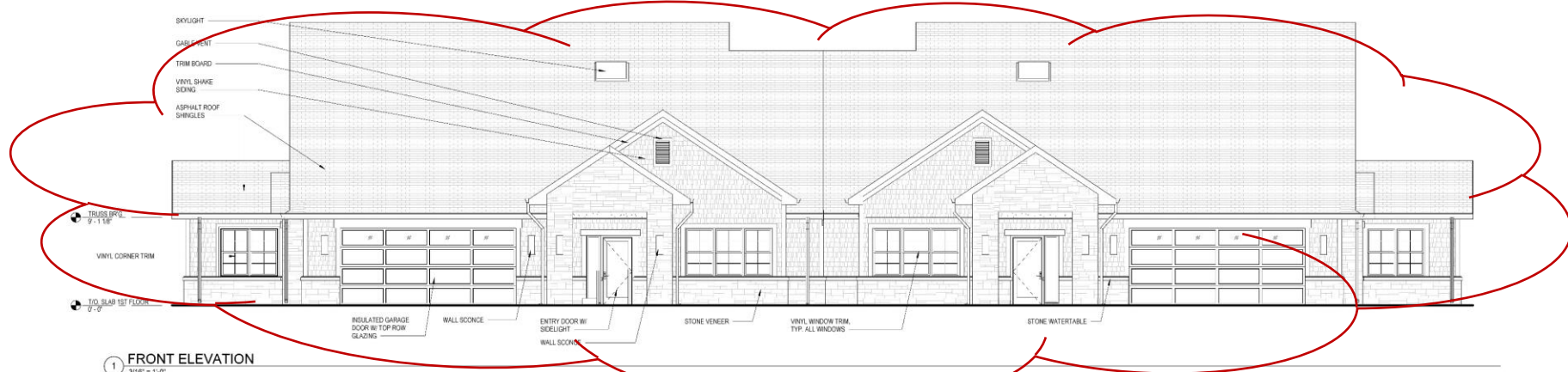
# BRANDYWINE, VILLA 3 – REVISED FRONT VIEW



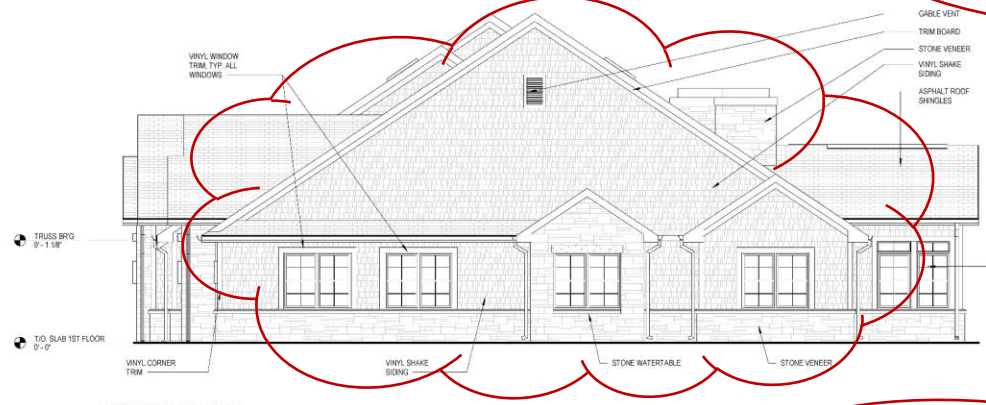
# BRANDYWINE, VILLA 3 – REVISED BACK VIEW



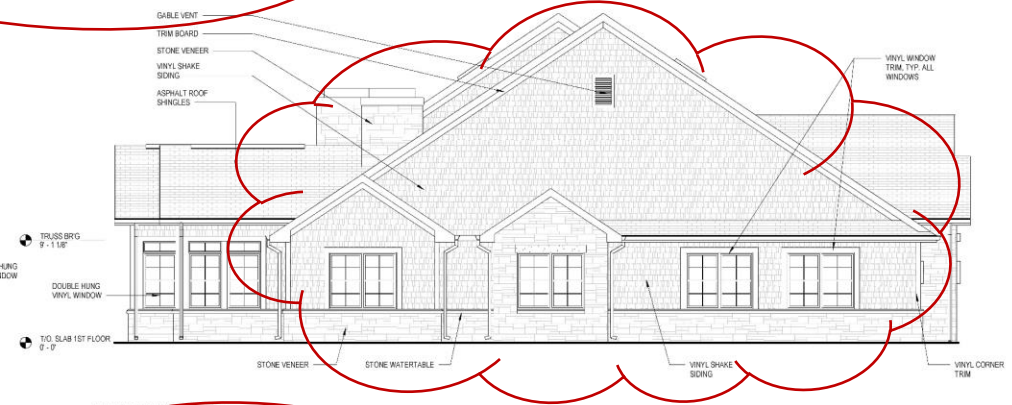
# BRANDYWINE, VILLA 3 – REVISED ELEVATIONS



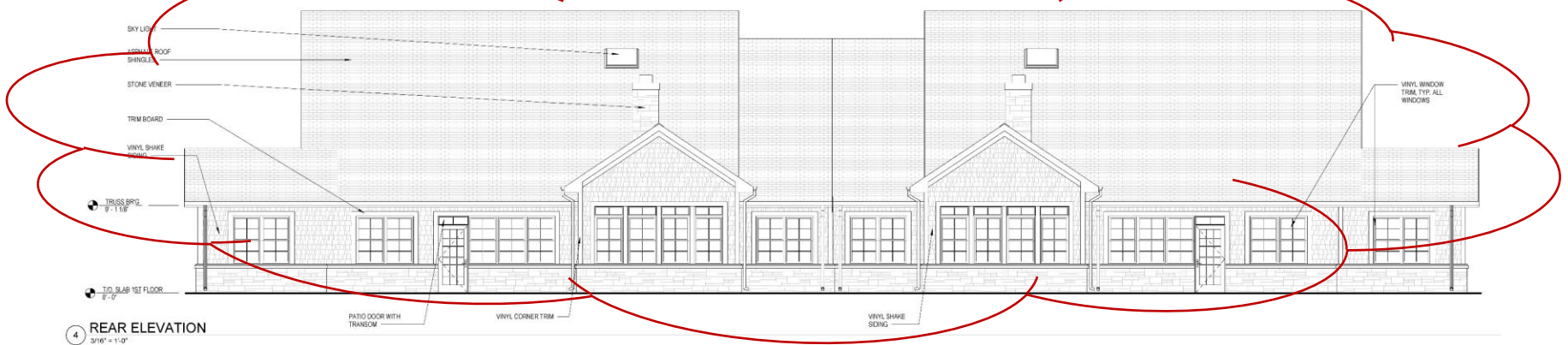
1 FRONT ELEVATION  
3/16" = 1'-0"



3 RIGHT ELEVATION  
3/16" = 1'-0"

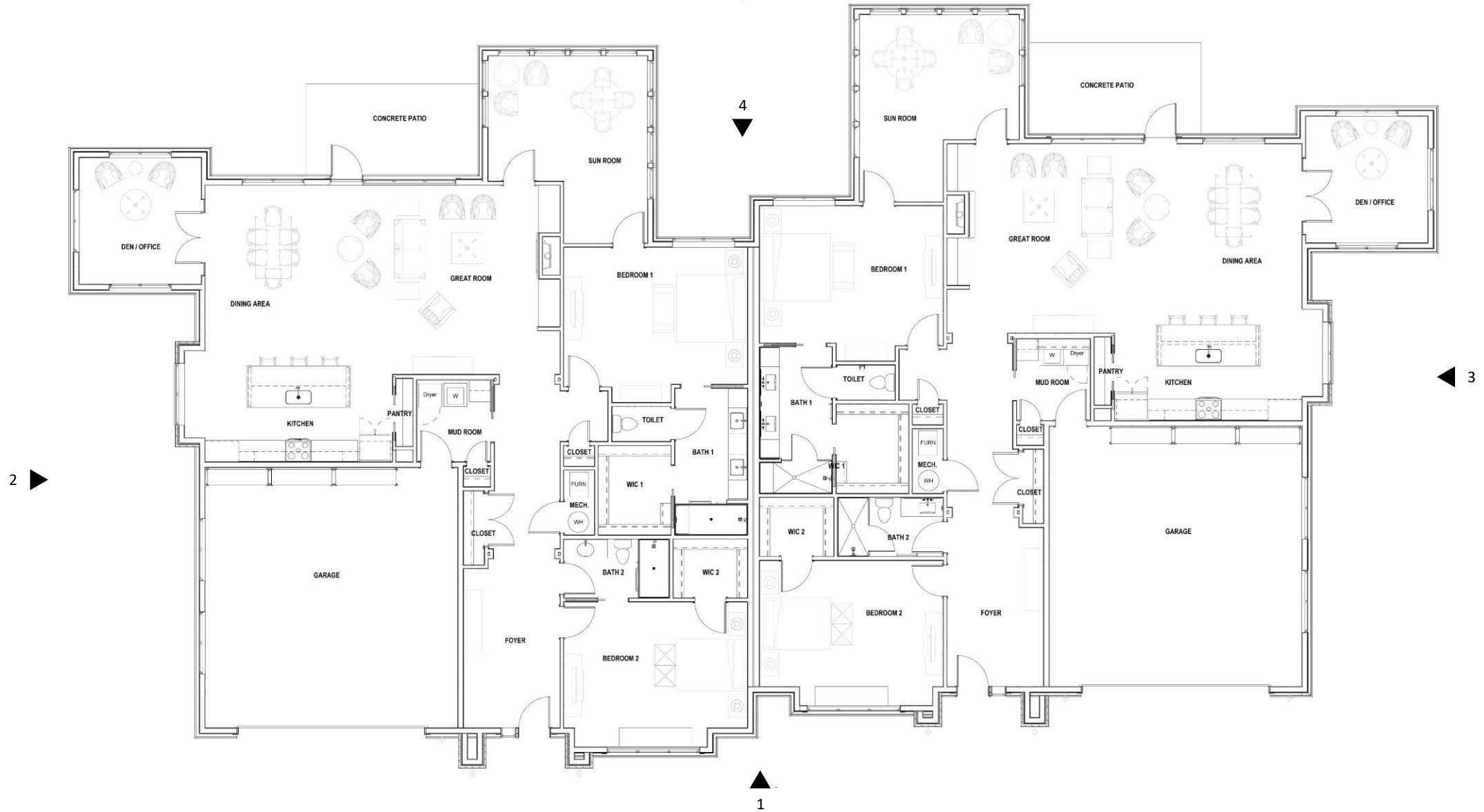


2 LEFT ELEVATION  
3/16" = 1'-0"

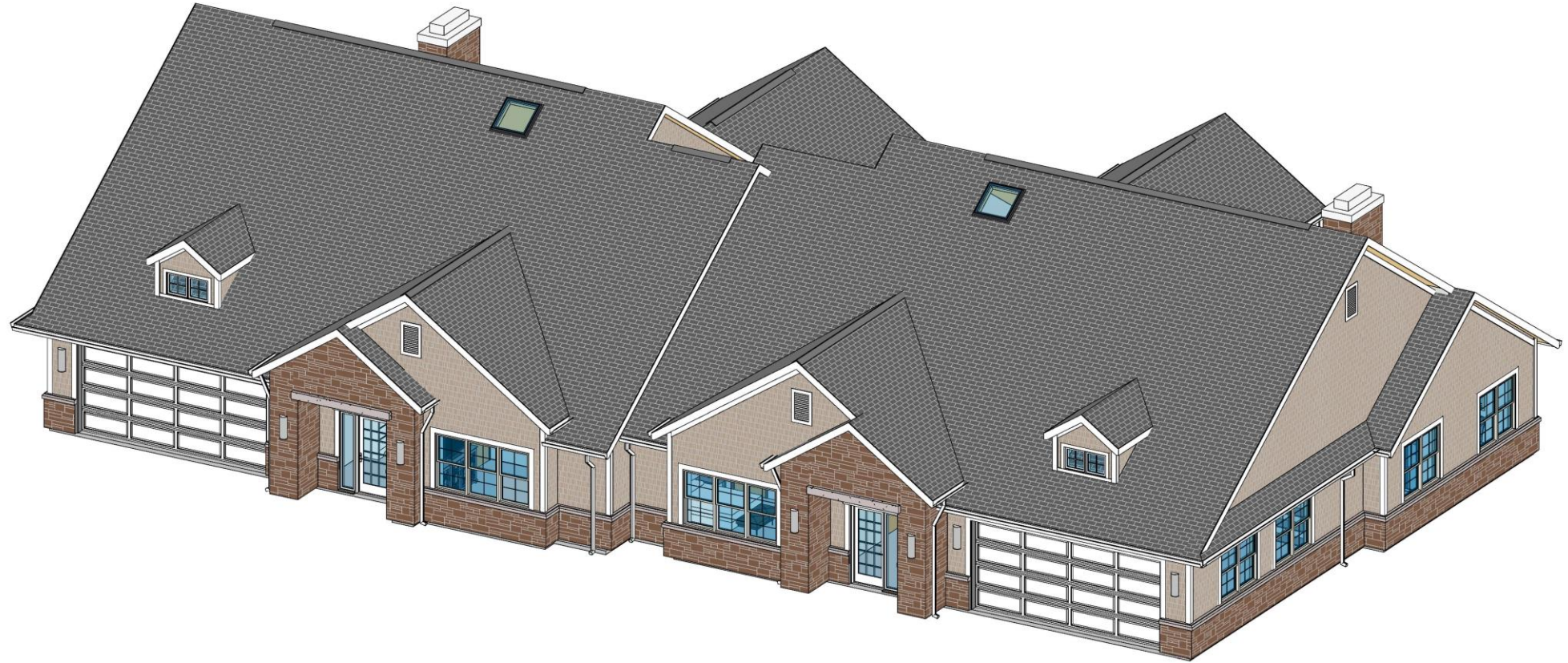


4 REAR ELEVATION  
3/16" = 1'-0"

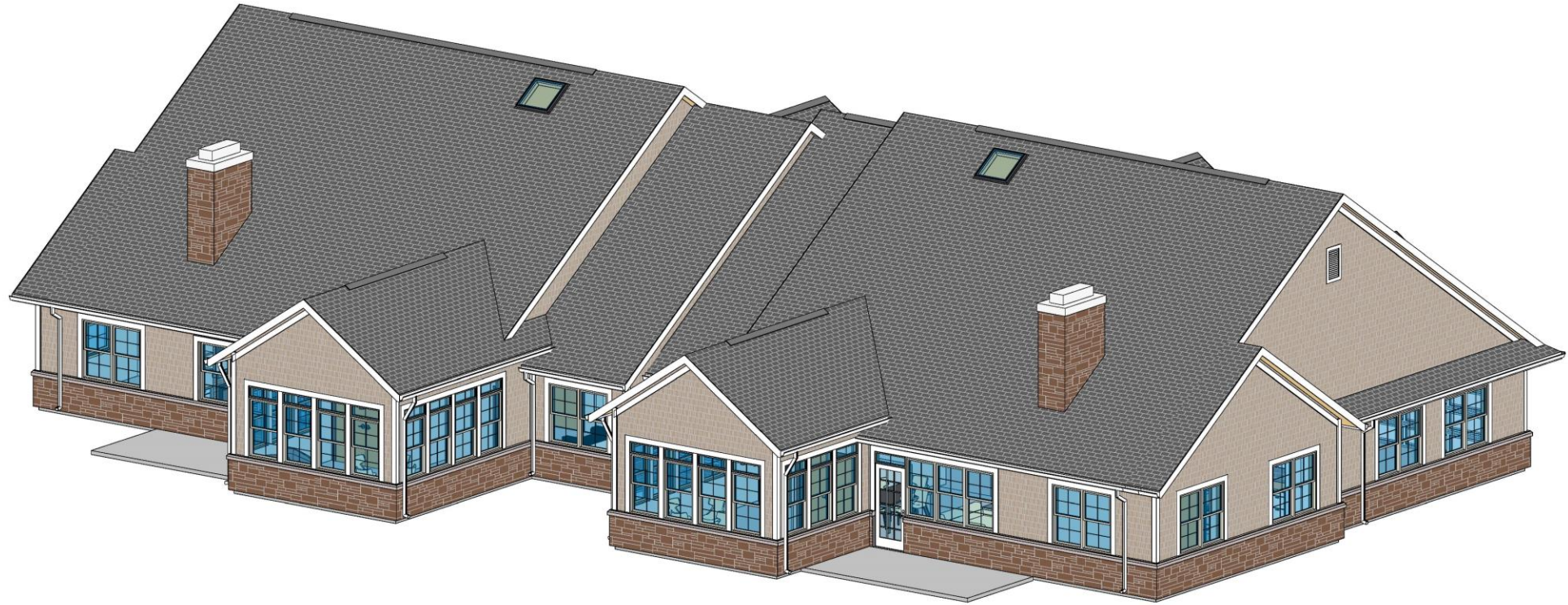
# BRANDYWINE, VILLA 3 – REVISED FLOOR PLAN



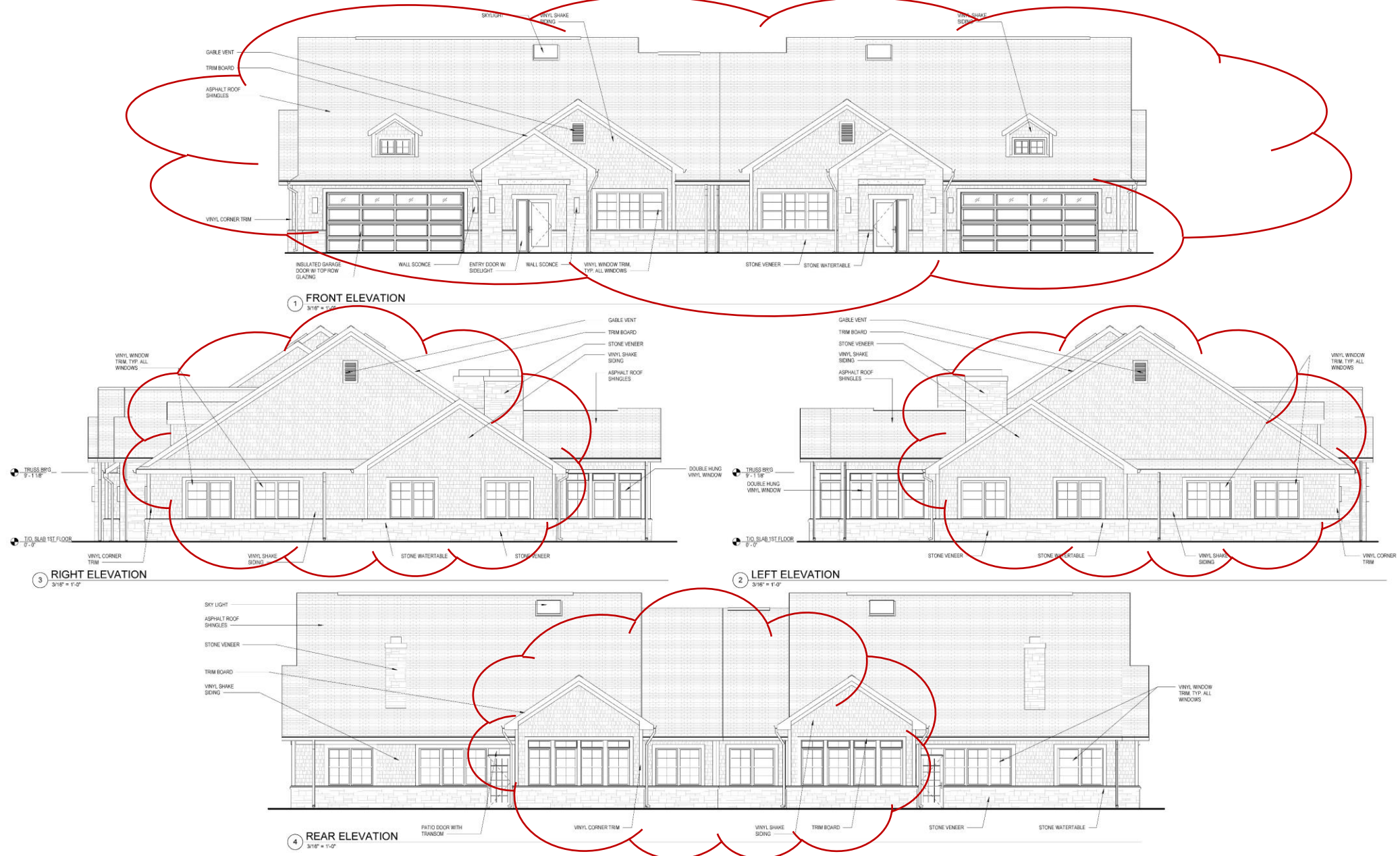
# BRANDYWINE, VILLA 4 – REVISED FRONT VIEW



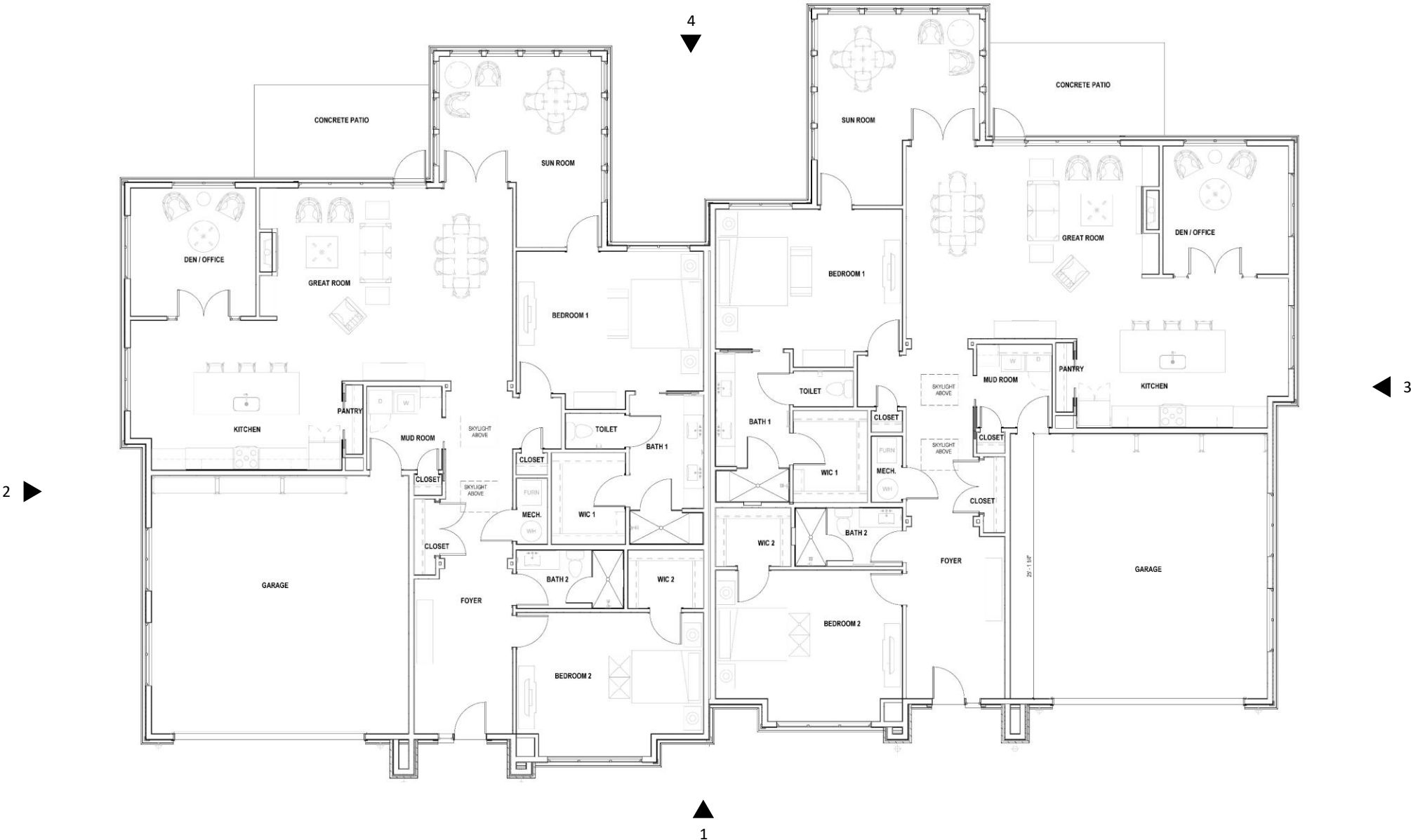
# BRANDYWINE, VILLA 4 – REVISED BACK VIEW



# BRANDYWINE, VILLA 4 – REVISED ELEVATIONS



# BRANDYWINE, VILLA 4 – REVISED FLOOR PLAN



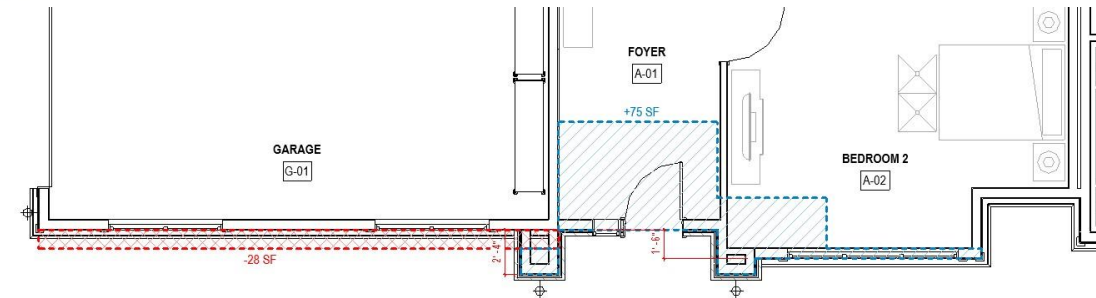
# VILLA 5 – DESIGN OPTIONS



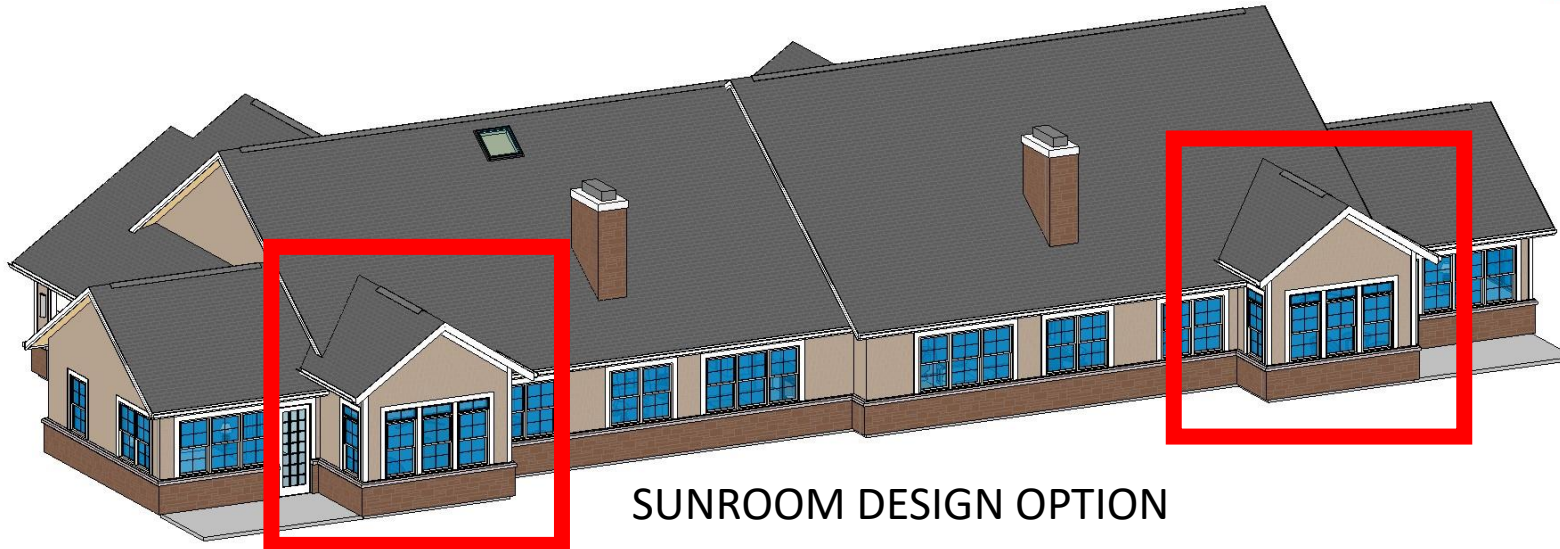
FRONT ENTRY DESIGN OPTION

## STAFF COMMENTS

1. Section IV-3 (b)(3) – Forward facing garages.
2. Section IV-3(g)(2) – 5' projections treated as wings
3. Section III-1(g)(3) – Sunroom foundation material.
4. Section IV-3(f)(1) – Consistent detail applied throughout
5. Section IV-3(c) – Roof to be same shape as main body.
6. Section III-1(g)(3) – Sunroom foundation material.
7. Window trim – Consistent on all elevations.

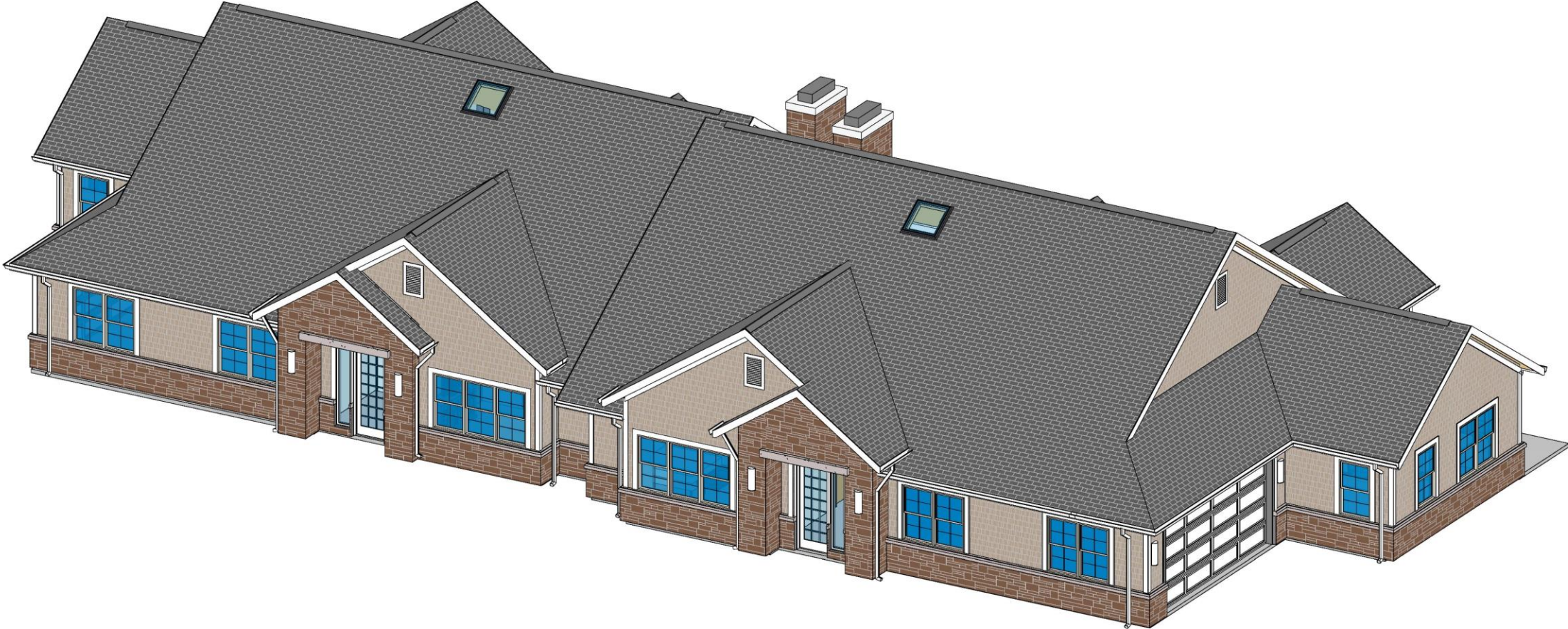


FLOOR PLAN DESIGN OPTION

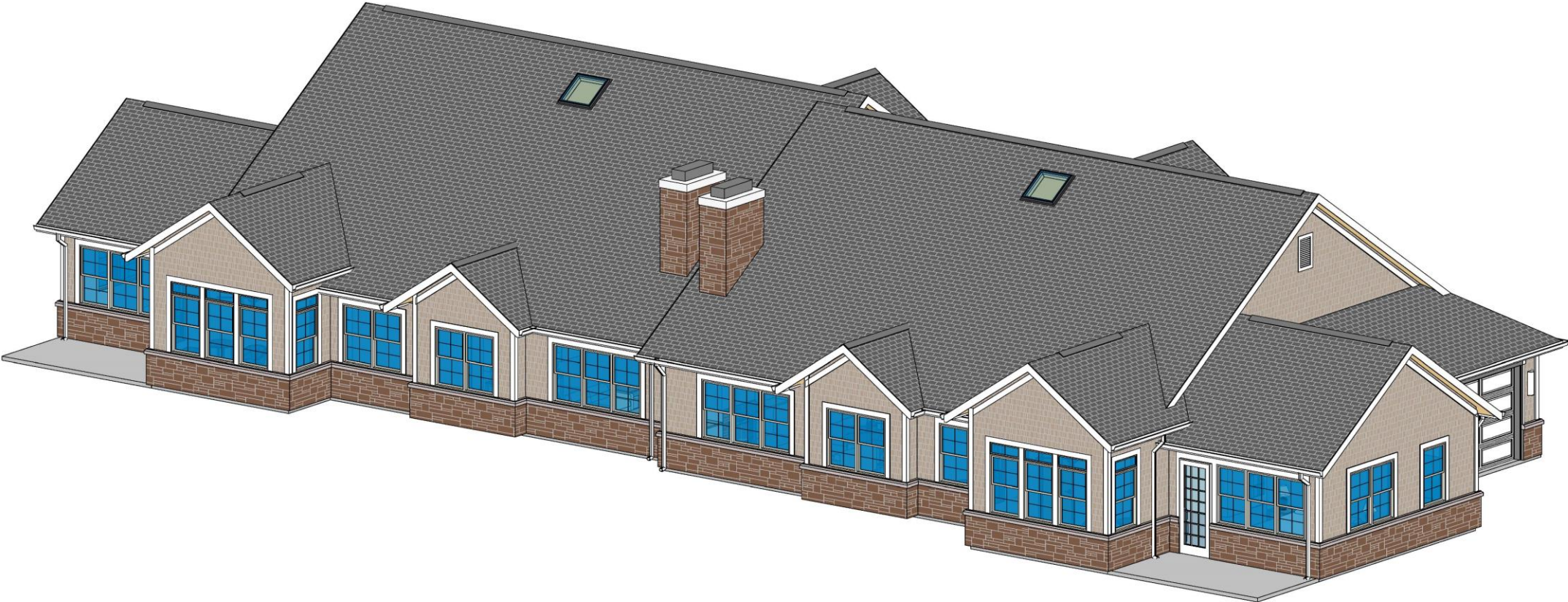


SUNROOM DESIGN OPTION

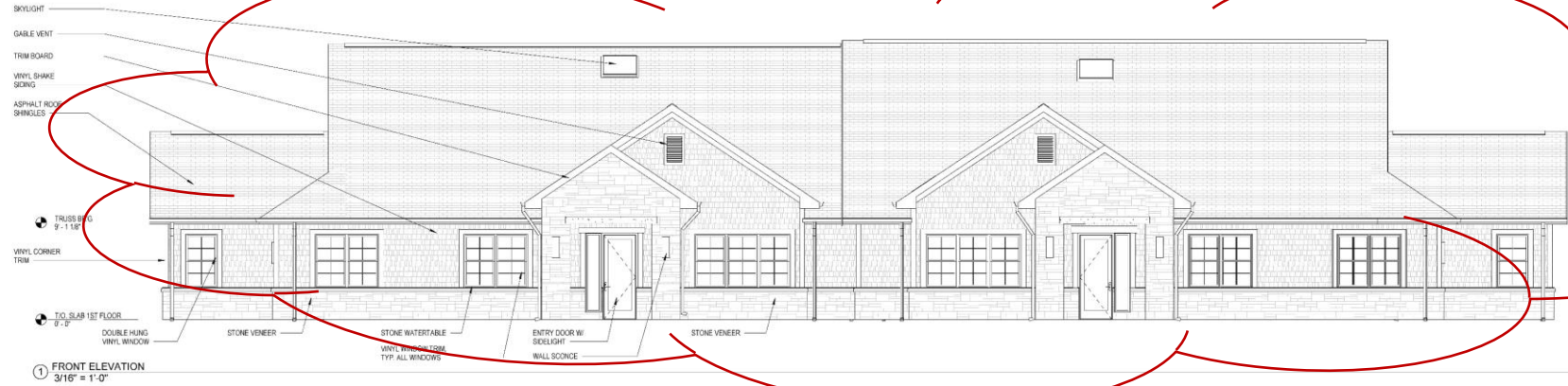
VILLA 5- REVISED FRONT VIEW



**VILLA 5- REVISED BACK VIEW**



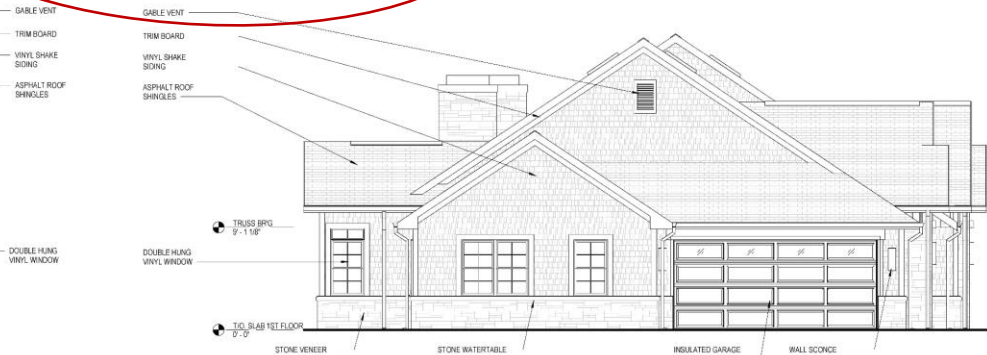
# VILLA 5 – REVISED ELEVATIONS



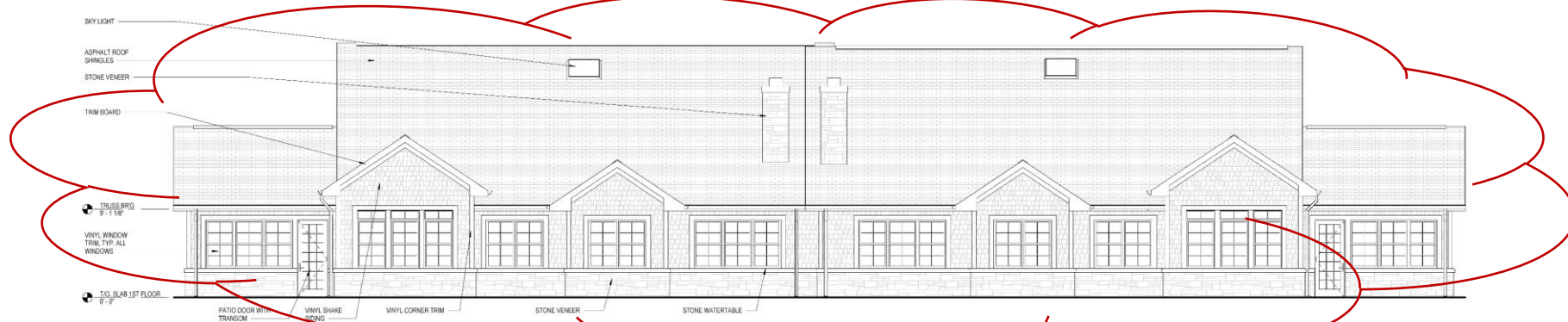
1 FRONT ELEVATION  
3/16" = 1'-0"



3 RIGHT ELEVATION  
3/16" = 1'-0"

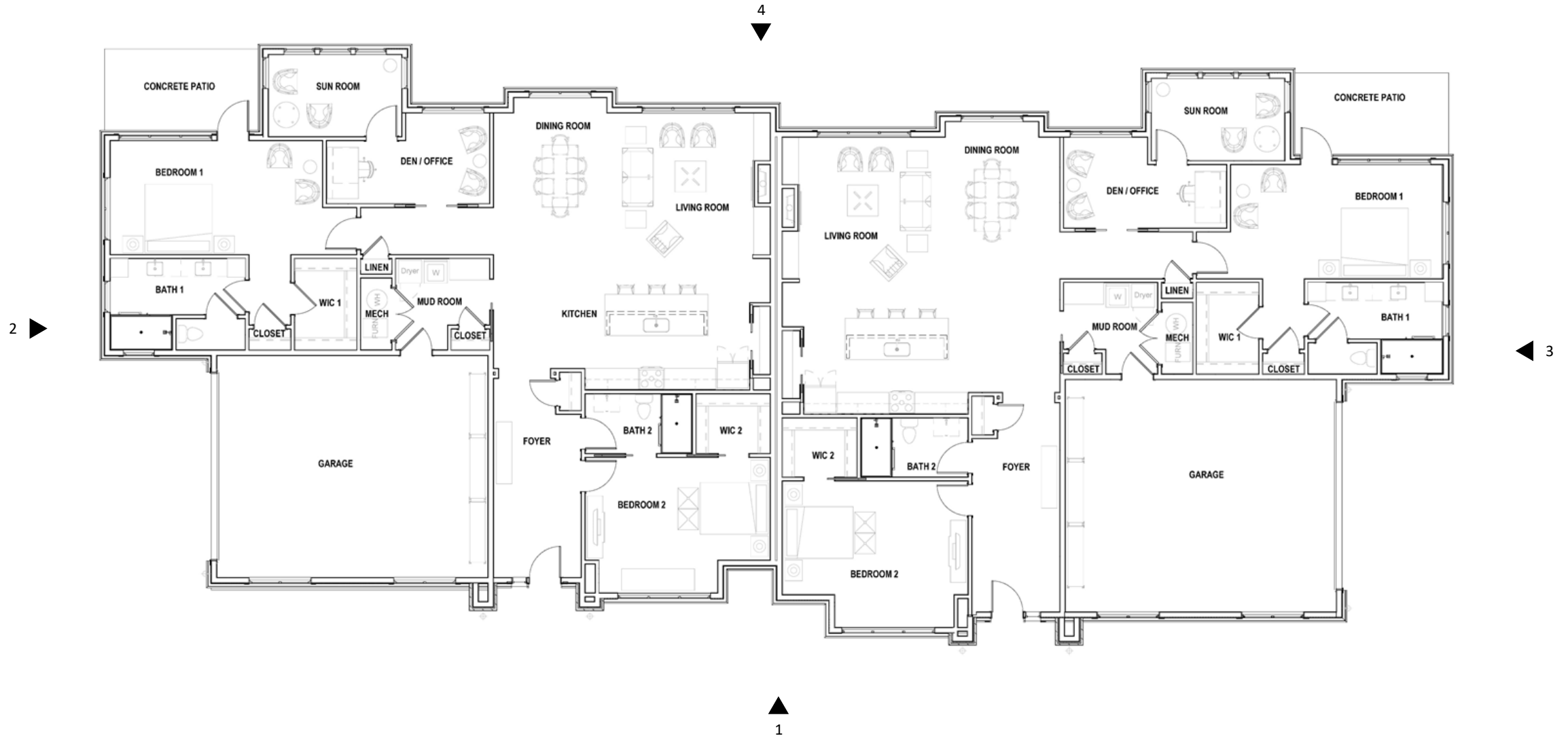


2 LEFT ELEVATION  
3/16" = 1'-0"



4 REAR ELEVATION  
3/16" = 1'-0"

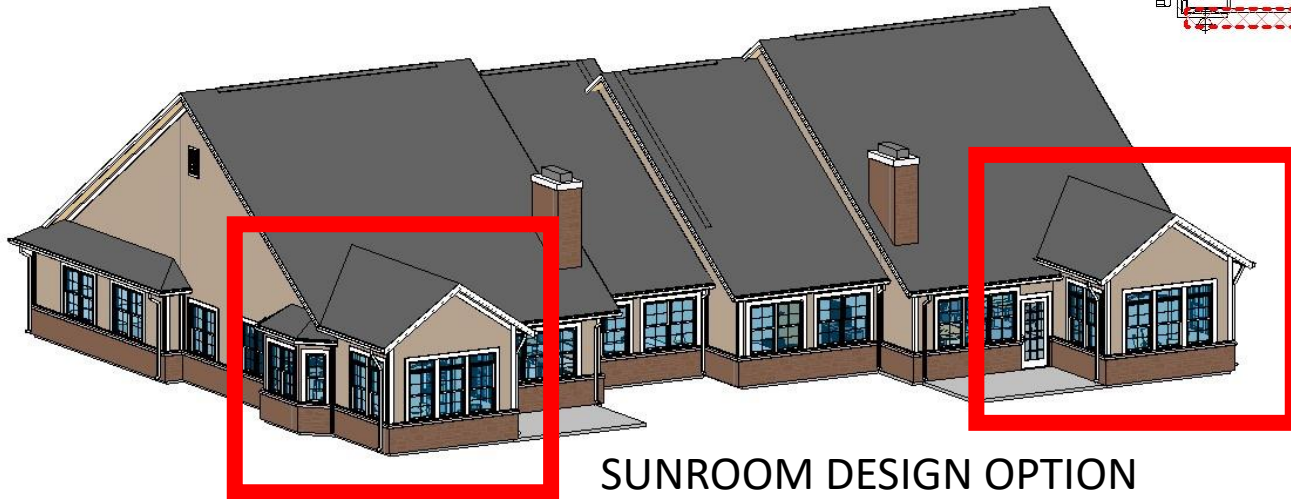
# VILLA 5 – REVISED FLOOR PLAN



# CASCADE, VILLA 8 & 9 – DESIGN OPTIONS



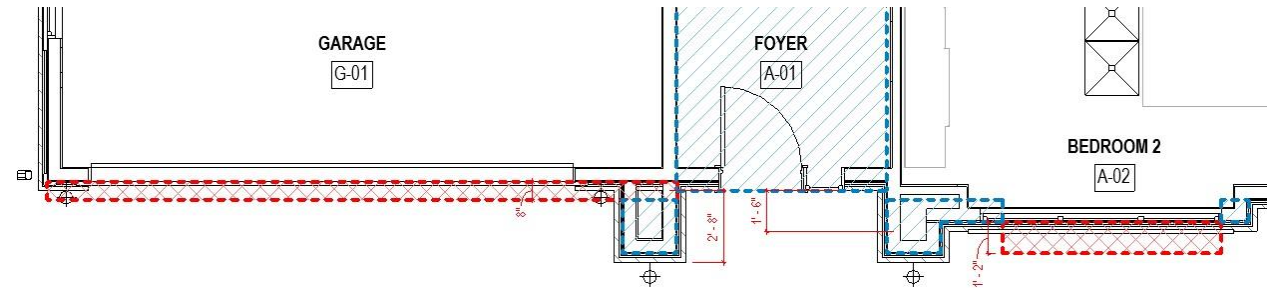
FRONT ENTRY DESIGN OPTION



SUNROOM DESIGN OPTION

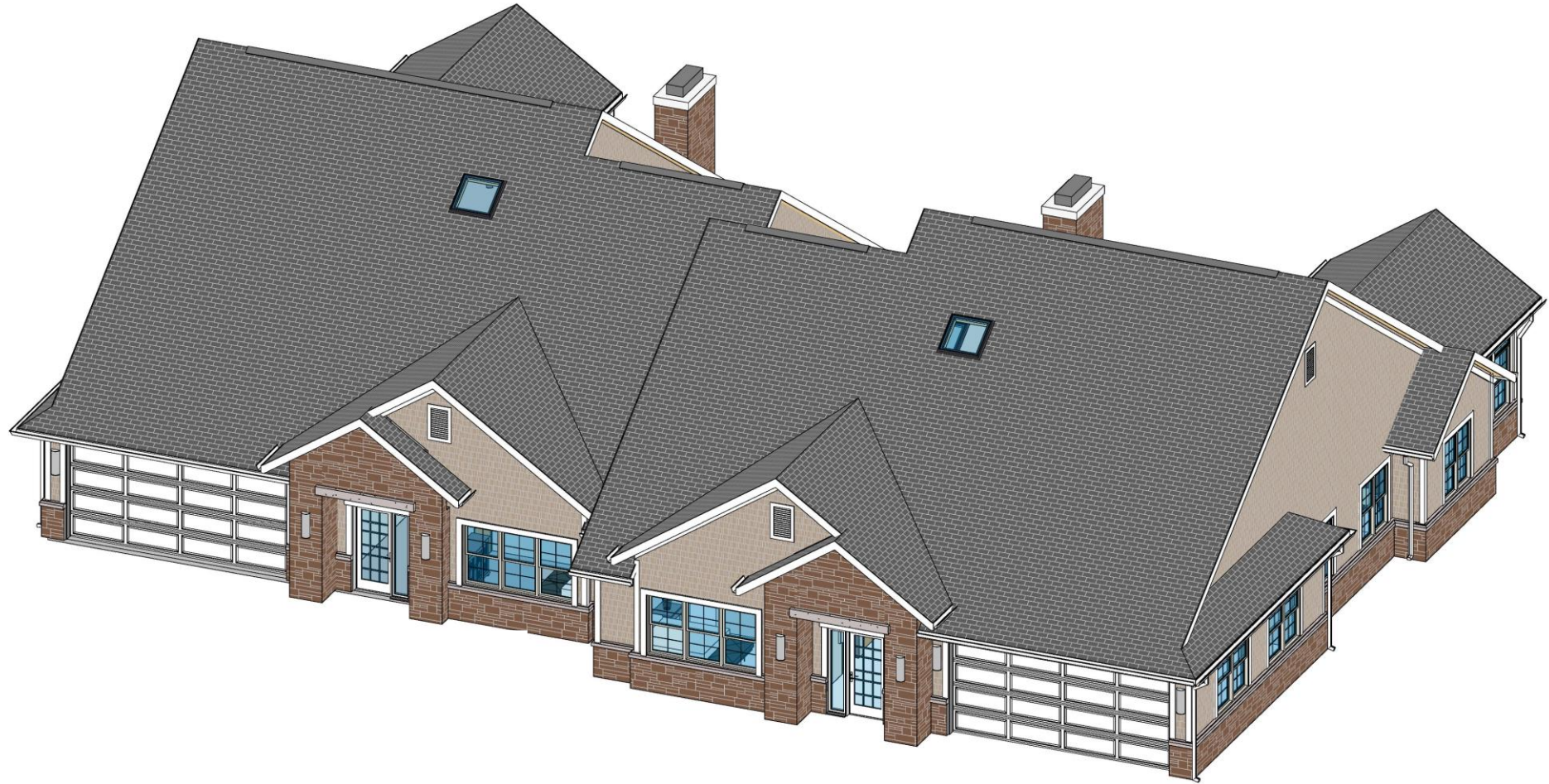
## Cascade - Villa 8 & 9

1. Section IV-3 (b)(3) – Forward facing garages.
2. Section IV-3 (b)(2) – Front Faceoff main body is 18” in front of all wings.
3. Section III-1(d)(5) – Fenestration every 12’
4. Section IV-3(c) – Roof to be same shape as main body.
5. Section III-1(g)(3) – Sunroom foundation material.

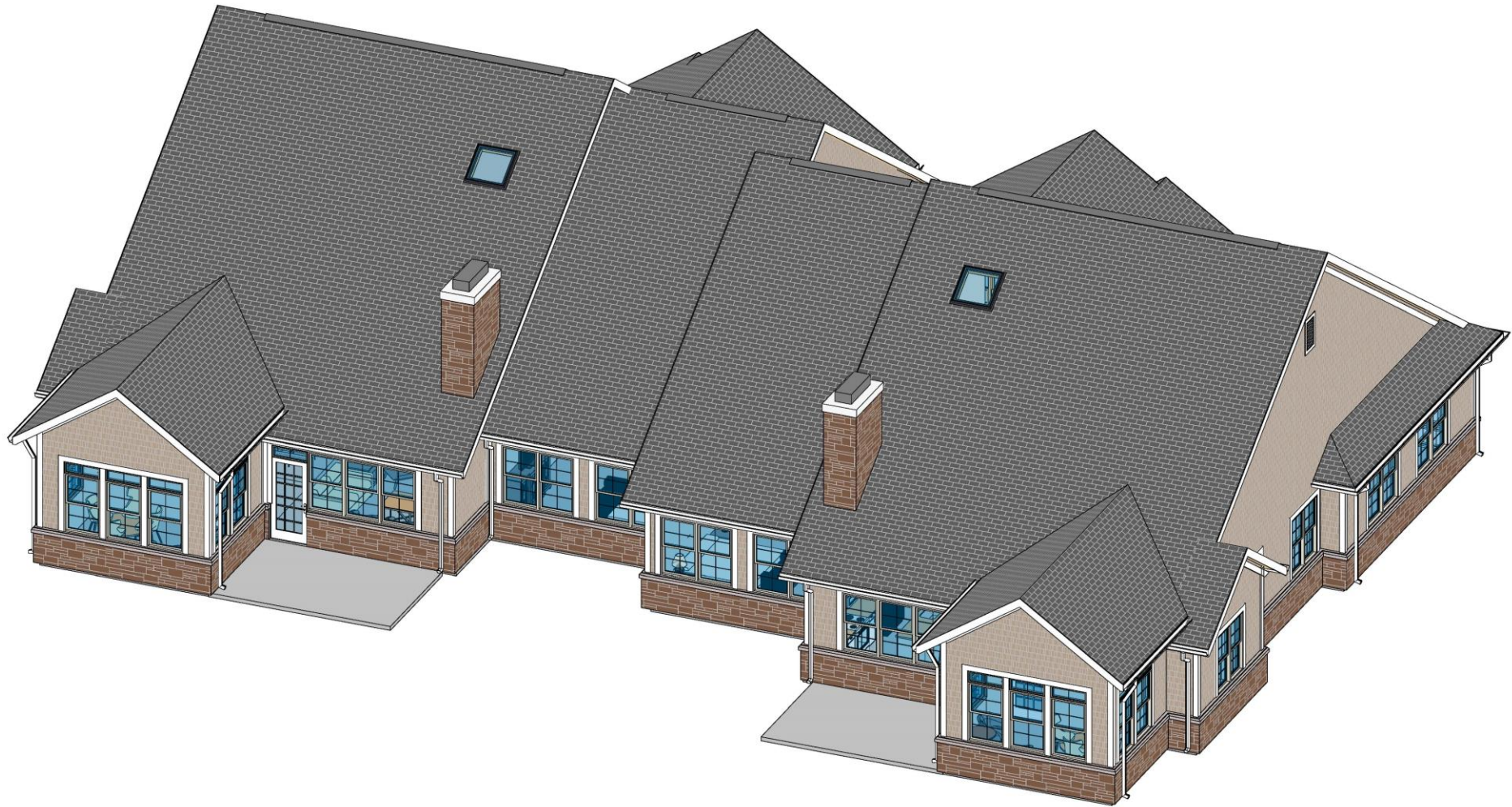


FLOOR PLAN DESIGN OPTION

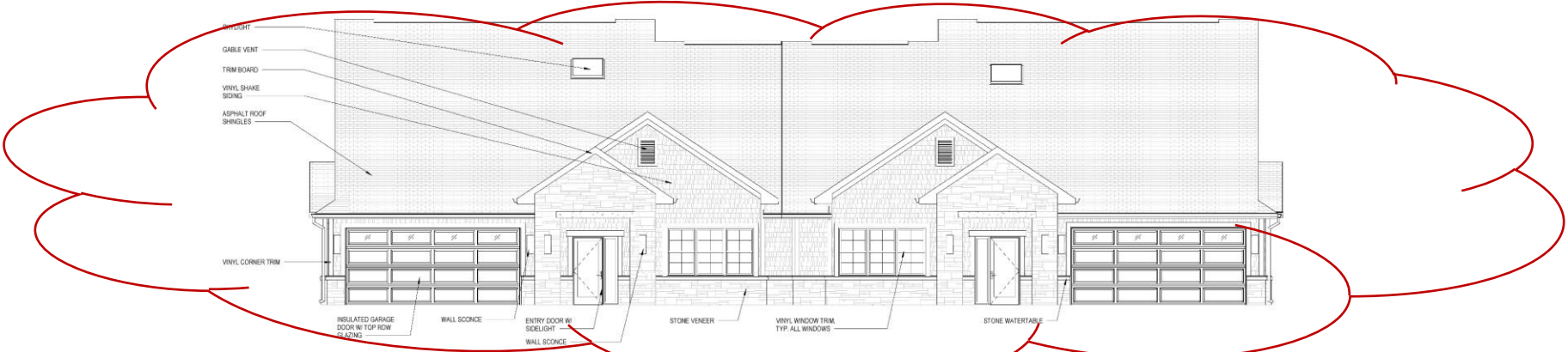
# CASCADE, VILLAS 8 & 9– REVISED FRONT VIEW



# CASCADE, VILLAS 8 & 9– REVISED BACK VIEW

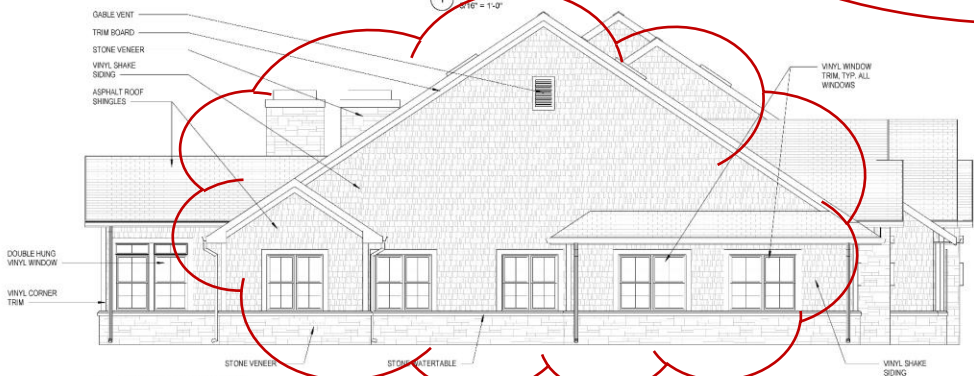


# CASCADE, VILLAS 8 & 9 – REVISED ELEVATIONS



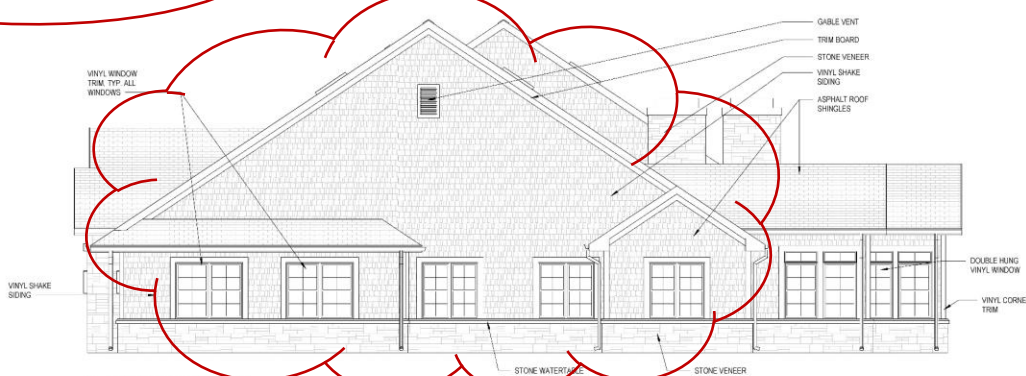
1 FRONT ELEVATION

3/16" = 1'-0"



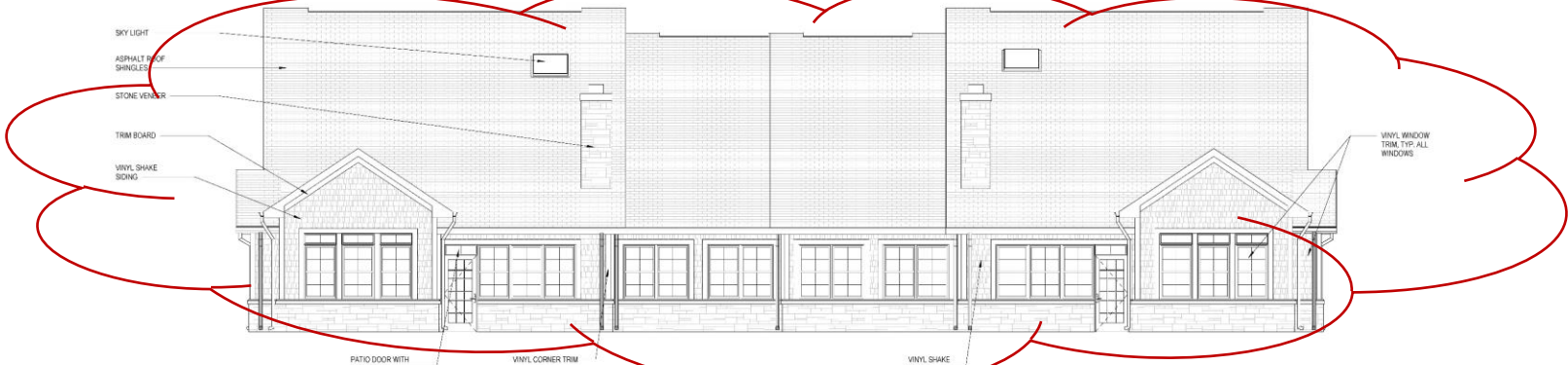
3 LEFT ELEVATION

3/16" = 1'-0"



2 RIGHT ELEVATION

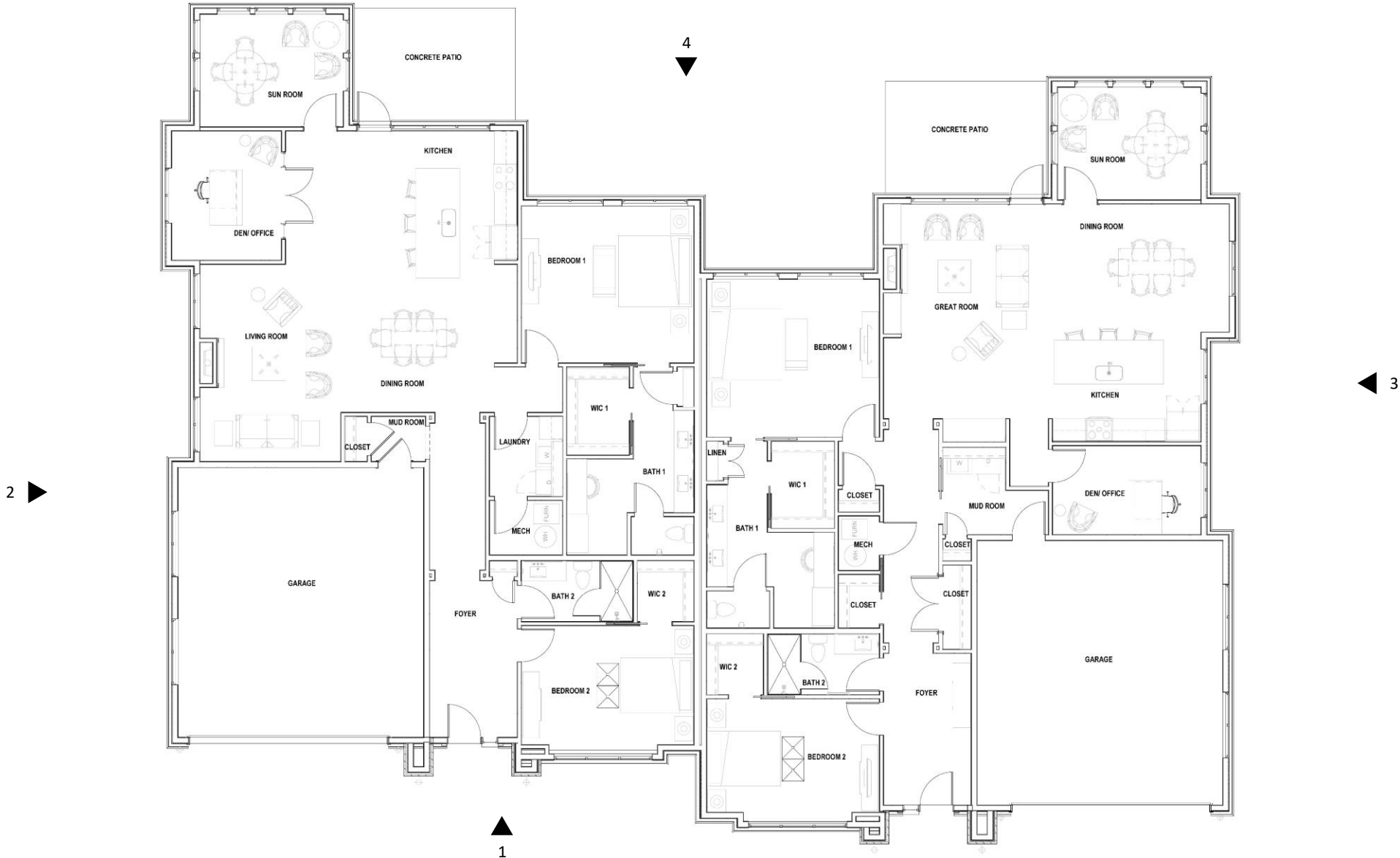
3/16" = 1'-0"



4 REAR ELEVATION

3/16" = 1'-0"

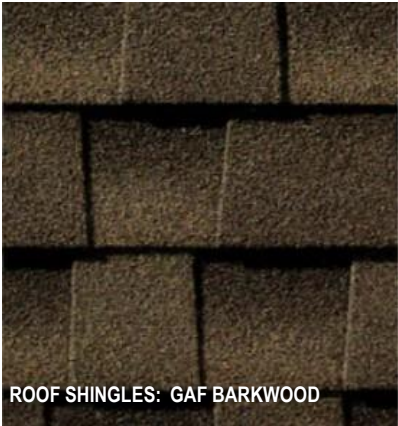
# CASCADE, VILLAS 8 & 9 – REVISED FLOOR PLAN



03

EXTERIOR FINISHES

# EXTERIOR FINISHES



THANK YOU