

BOUNDARY AND TOPOGRAPHIC SURVEY

PART OF HUDSON TOWNSHIP LOT 88
 T 4 N, R 10 W
 CITY OF HUDSON
 COUNTY OF SUMMIT
 STATE OF OHIO

LEGEND:

- EXISTING IRON PIN FOUND AS NOTED
- ⊠ EXISTING MONUMENT BOX FOUND AS NOTED
- ⊙ 5/8" x 30" REBAR WITH CAP "GPD" SET
- ⊕ EXISTING LIGHT POLE
- ⊖ EXISTING POWER POLE
- ⊗ EXISTING POWER & TELEPHONE POLE
- ⊘ EXISTING TELEPHONE POLE
- ⊙ EXISTING POWER & LIGHT POLE
- ⊚ EXISTING POWER, TELEPHONE & LIGHT POLE
- ⊛ EXISTING ELECTRIC METER
- ⊜ EXISTING TRANSFORMER
- ⊝ EXISTING ELECTRIC PULLBOX
- ⊞ EXISTING SIGNAL PULL BOX
- ⊟ EXISTING CATCH BASIN
- ⊠ EXISTING CURB INLET
- ⊡ EXISTING DOWN SPOUT
- ⊢ EXISTING STORM MANHOLE
- ⊣ EXISTING SANITARY MANHOLE
- ⊤ EXISTING FIRE HYDRANT
- ⊥ EXISTING WATER METER
- ⊦ EXISTING WATER VALVE
- ⊧ EXISTING WATER MANHOLE
- ⊨ EXISTING GAS VALVE
- ⊩ EXISTING GAS METER
- ⊪ EXISTING UNDERGROUND GAS LINE MARKER
- ⊫ EXISTING TELEPHONE PEDESTAL
- ⊬ EXISTING CABLE TV PEDESTAL
- ⊭ EXISTING POST OR BOLLARD
- ⊮ EXISTING SIGN
- ⊯ EXISTING HANDICAP SIGN
- ⊰ EXISTING CLEAOUT
- ⊱ EXISTING GUY WIRE
- ⊲ EXISTING FLAG POLE
- ⊳ EXISTING GREASE PIT
- ⊴ EXISTING RIP RAP
- ⊵ EXISTING CURB
- P/L — EXISTING PROPERTY LINE
- R/W — EXISTING RIGHT OF WAY LINE
- C/L — EXISTING CENTER LINE
- OH — EXISTING OVERHEAD UTILITY LINES
- G — EXISTING UNDERGROUND GAS LINES
- ST — EXISTING UNDERGROUND STORM LINES
- SAN — EXISTING UNDERGROUND SANITARY LINES
- W — EXISTING UNDERGROUND WATER LINES
- E — EXISTING UNDERGROUND ELECTRIC LINES

BENCHMARKS:

1. "M" in Mueller on Hydrant Bonnet
 N 585306.7
 E 2267700.1
 ELEV. = 1080.98
2. Branch Spike Southwest Side of Utility Pole
 N 585836.1
 E 2267569.0
 ELEV. = 1073.80
3. Railroad Spike on North Side of Utility Pole
 N 585834.5
 E 2267399.0
 ELEV. = 1074.32
4. "M" in Mueller on Hydrant Bonnet
 N 585828.7
 E 2267123.9
 ELEV. = 1083.57
5. Box Out on East Side on Top of Light Pole Base
 N 585135.4
 E 2267236.4
 ELEV. = 1084.80



LOCATION MAP

INVERTS:

SSM# 1005 R&L 1076.07 8" VCP (N) = 1080.17 8" VCP (S) = 1080.07	CSS 1009 R&L 1076.33 12" SFP (N) = 1074.73 4" SFP (S) = 1074.78	CSS 1020 R&L 1074.97 12" SFP (SE) = 1073.17	CSS 2021 R&L 1073.39 24" CPP (NE) = 1068.94 8" SFP (S) = 1071.09
SSM# 1006 R&L 1076.63 8" VCP (N) = 1082.08 8" VCP (S) = 1082.03 6" VCP (W) = 1082.38	CSS 1010 R&L 1075.10 12" SFP (S) = 1073.30 12" SFP (NW) 1073.25	CSS 1021 R&L 1075.58 12" SFP (NW) = 1072.48 12" SFP (E) = 1072.38	SSM# 2022 R&L 1073.48 18" RCP (N) = 1068.48 24" CPP (E, SW) = 1068.78
SSM# 1011 R&L 1075.30 8" VCP (N, S, E, NW) = 1064.25	CSS 1014 R&L 1078.21 18" CPP (E) = 1072.01 18" CPP (S) = 1073.08 12" CPP (W) = 1073.21	CSS 2009 R&L 1079.09 18" CPP (E) = 1078.79 6" SFP (W) = 1078.84	CI 2023 R&L 1072.11 12" RCP (E) = 1068.35 18" RCP (S) = 1068.26 18" RCP (N) = 1068.06 18" RCP (W) = 1068.11 6" SFP (S) = 1068.31
SSM# 1012 R&L 1075.42 8" VCP (N) = 1065.12 8" VCP (S) = 1064.47 8" VCP (W) = 1064.52	CSS 1013 R&L 1073.38 24" CPP (N) = 1062.53 4" ORIFACE = 1076.93	CSS 2012 R&L 1081.24 18" RCP (E) = 1072.49 18" RCP (W) = 1073.84 10" SFP (S) = 1075.84	CSS 2025 R&L 1080.23 12" CPP (N) = 1075.88 6" SFP (W) = 1078.38 6" SFP (E) = 1078.23 6" SFP (S) = 1078.38
SSM# 2020 R&L 1073.66 8" VCP (E) = 1066.56 8" VCP (W) = 1068.78	CI 1015 R&L 1080.37 12" CPP (S) = 1074.62 12" CPP (E) = 1074.57 8" SFP (NW) = 1078.72	CI 2013 R&L 1075.60 15" RCP (E) = 1071.15 18" RCP (W) = 1071.15 6" SFP (S) = 1072.85 - 2 PIPES	CI 2026 R&L 1080.30 15" CPP (NE) = 1074.54 12" CPP (S) = 1074.59 8" SFP (S) = 1075.09
CSS 1001 R&L 1078.18 15" CPP (S) = 1077.03	CI 1018 R&L 1080.20 12" CPP (E) = 1075.60 12" CPP (S) = 1073.10	CSS 2016 R&L 1075.98 12" CPP (E) = 1072.73	CI 2028 R&L 1080.39 15" CPP (NE) = 1074.54 12" CPP (S) = 1074.59 8" SFP (S) = 1075.09
SSM# 1022 R&L 1078.96 15" CPP (N, S) = 1077.03 DEBRIS SEPARATOR	CSS 1017 R&L 1077.28 18" CPP (SE) = 1073.96 18" CPP (W) = 1073.91	CSS 2017 R&L 1074.54 12" CPP (E, W) = 1072.44	CSS 2027 R&L 1080.40 12" CPP (N) = 1075.45 12" CPP (S) = 1075.55
CSS 1003 R&L 1076.08 12" SFP (S) = 1073.23 12" RCP (N) = 1073.43 8" SFP (W) = 1073.38	CSS 1018 R&L 1078.33 18" CPP (NW) = 1074.23	CI 2018 R&L 1072.83 18" RCP (E) = 1068.18 15" RCP (W) = 1068.28 12" RCP (N) = 1068.43 8" SFP (S) = 1076.69	CSS 2028 R&L 1081.74 12" CPP (N) = 1076.34 6" SFP (S) = 1076.69 8" SFP (E) = 1076.69
CSS 1004 R&L 1074.83 12" SFP (N) = 1072.46 12" PVC (SW) = 1072.38	CSS 1019 R&L 1078.70 12" CPP (N) = 1075.80 10" SFP (W) = 1075.85	CI 2019 R&L 1072.88 12" RCP (S) = 1076.18	SSM# 2029 R&L 1081.50 10" PVC (E) = 1078.20
CSS 1007 R&L 1076.38 12" RCP (S) = 1074.38			

Underground Utilities

2 Working Days
Before You Dig

Call 800-362-2764 (Toll Free)
Ohio Utilities Protection Service

Non-members
Must Be Called Directly

Call 800-925-0988 (Toll Free)
Oil & Gas Producers Utility Protection Service

UTILITIES SHOWN ON SURVEY WERE LOCATED BASED ON FIELD MARKING PROVIDED BY OGPUPS REF# 160376 OUPPS REQUEST #B828801623 AND #B828801625.



Steven L. Mullaney
 STEVEN L. MULLANEY, OHIO PROFESSIONAL SURVEYOR NO. 7900
 DATE: 11/06/2018

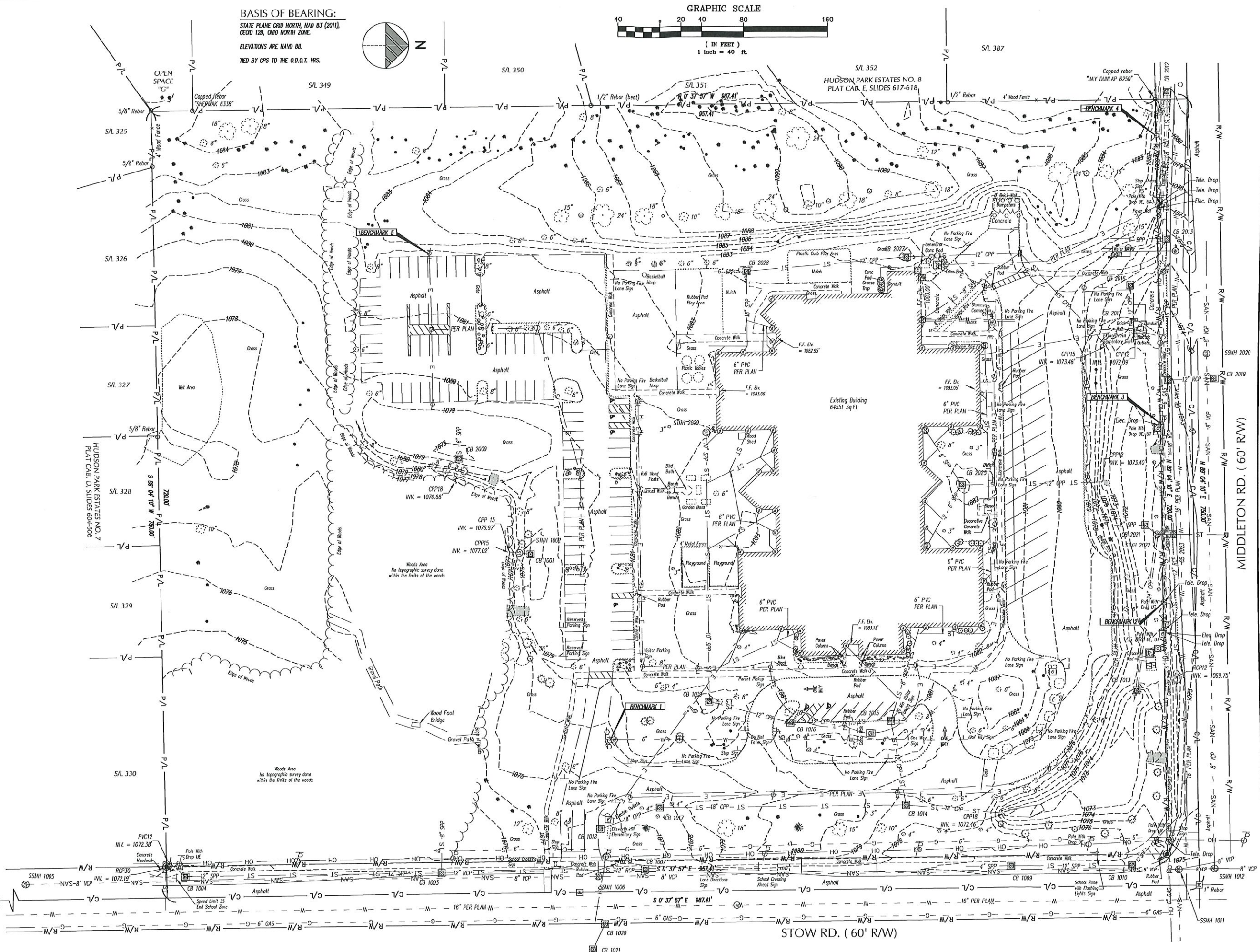
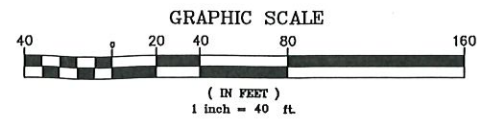
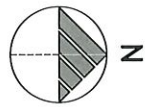
REV.	DATE	DESCRIPTION

ELLSWORTH HILL ELEMENTARY
 7750 STOW RD.
 HUDSON, OHIO 44236

ISSUED FOR:	
PERMIT	-
BID	-
CONSTRUCTION	-
RECORD	-
PROJECT MANAGER	DESIGNER
SLM	JEK

JOB NO.
2018098.03

BASIS OF BEARING:
 STATE PLANE GRID NORTH, NAD 83 (2011),
 GEOID 12B, OHIO NORTH ZONE.
 ELEVATIONS ARE NAVD 88.
 TIED BY GPS TO THE O.D.O.T. VRS.



REV.	DATE	DESCRIPTION

ELLSWORTH HILL ELEMENTARY
 7750 STOW RD.
 HUDSON, OHIO 44236

ISSUED FOR:	
PERMIT	-
BID	-
CONSTRUCTION	-
RECORD	-
PROJECT MANAGER	DESIGNER
SLM	JEK

JOB NO.
2018098.03

Drawing Name: C:\01\1801\1809803 - Ellsworth Hill ES.dwg
 Designer: H. E. Schomer
 Date: 6/18/18
 Project: Ellsworth Hill Elementary

MIDDLE SCHOOL PARKING SPACES				
NUMBER OF SPACES	REQUIRED	EMPLOYEE	VISITOR	EVENT
	175	10	10	181
PARKING REQUIREMENTS				
TWO SPACES PER CLASSROOM, PLUS ONE SPACE FOR EVERY THREE SEATS IN THE LARGEST AUDITORIUM.				
THEREFORE: $887 \times 2 = 1774$ SPACES REQUIRED. 203 TOTAL AVAILABLE.				
OVERALL LAND USE DATA				
	EXIST. % OF SITE AREA	EXIST. AREA PROVIDED	PROP. % OF SITE AREA	PROP. AREA PROVIDED
PERVIOUS AREA	68.6%	11.81 AC.	66.5%	10.52 AC.
IMPERVIOUS AREA	30.4%	4.80 AC.	33.5%	5.29 AC.
TOTAL	100%	15.81 AC.	100%	15.81 AC.
CURRENT ZONING: SUBURBAN RESIDENTIAL NEIGHBORHOOD				

Adding 22 Spaces



GENERAL SHEET NOTES

- FOR STORM WATER POLLUTION PREVENTION SEE SHEET C-102 AND C-131.
- FOR SITE GRADING INFORMATION REFER TO SHEET C-131 THROUGH C-132.
- FOR SITE UTILITY INFORMATION REFER TO SHEET C-131 THROUGH C-132.

SITE KEYNOTES

- PROPOSED CONCRETE CURB PER SHEET C-501.
- PROPOSED INTEGRAL CURBED CONCRETE WALK PER SHEET C-501.
- PROPOSED ADA RAMP INSTALLED PER CURRENT ADA GUIDELINES AND SHEET C-501.
- PROPOSED CURB TAPER PER SHEET C-501.
- PROPOSED TRANSVERSE STRIPING PAINTED ON PAVEMENT PER SHEET C-501.
- PROPOSED LANDSCAPE AREA, SEE SHEET L-101.
- PROPOSED 4" WIDE PAINTED STRIPE ON PAVEMENT FOR PARKING STALL - WHITE FOR CAR STALLS, BLUE FOR ADA STALLS.
- PROPOSED STANDARD DUTY ASPHALT PAVEMENT PER SHEET C-501.
- PROPOSED HEAVY DUTY ASPHALT PAVEMENT PER SHEET C-501.
- PROPOSED "STOP DO NOT ENTER" SIGN, SEE SHEET C-501.
- PROPOSED BIKE RETENTION BASIN, SEE SHEET C-403 AND SHEET C-131.



REV.	DATE	DESCRIPTION

FOR REFERENCE ONLY
NOT FOR CONSTRUCTION

ELLSWORTH HILL ELEMENTARY SCHOOL
CLASSROOM WING ADDITION
7750 STOW RD., HUDSON, OH 44236
SITE PLAN

ISSUED FOR:	
DRAFT	12/17/18
BID	-
CONSTRUCTION	-
RECORD	-
PROJECT MANAGER	DESIGNER
JP	MH

JOB NO.
2018098.03

C-121

Underground UTILITIES

2 Working Days Before You Dig
Call 800-362-2764 (Toll Free)
Ohio Utilities Protection Service
Non-members Must Be Called Directly
Call 800-925-0958 (Toll Free)
Oil & Gas Producers Utility Protection Service

LEGEND
(SEE SHEET C-001 FOR GENERAL LEGEND)

- PROPOSED STANDARD DUTY ASPHALT PER SHEET C-501
- PROPOSED HEAVY DUTY ASPHALT PER SHEET C-501
- PROPOSED CONCRETE
- PROPOSED TRANSVERSE STRIPING
- CONSTRUCTION KEYNOTE

BENCHMARKS:

- 1" in Meter on Hydrant Bonnet
N 555306.7
E 298700.1
ELEV. = 1000.98
- Bench Spike Southwest Side of Utility Pole
N 555361.7
E 226709.0
ELEV. = 1073.80
- Railroad Spike on North Side of Utility Pole
N 555361.4
E 226709.0
ELEV. = 1074.32
- 1" in Meter on Hydrant Bonnet
N 555288.7
E 226723.9
ELEV. = 1083.57
- Bench Spike on East Side on Top of Light Pole Base
N 555154.4
E 2267236.4
ELEV. = 1084.80

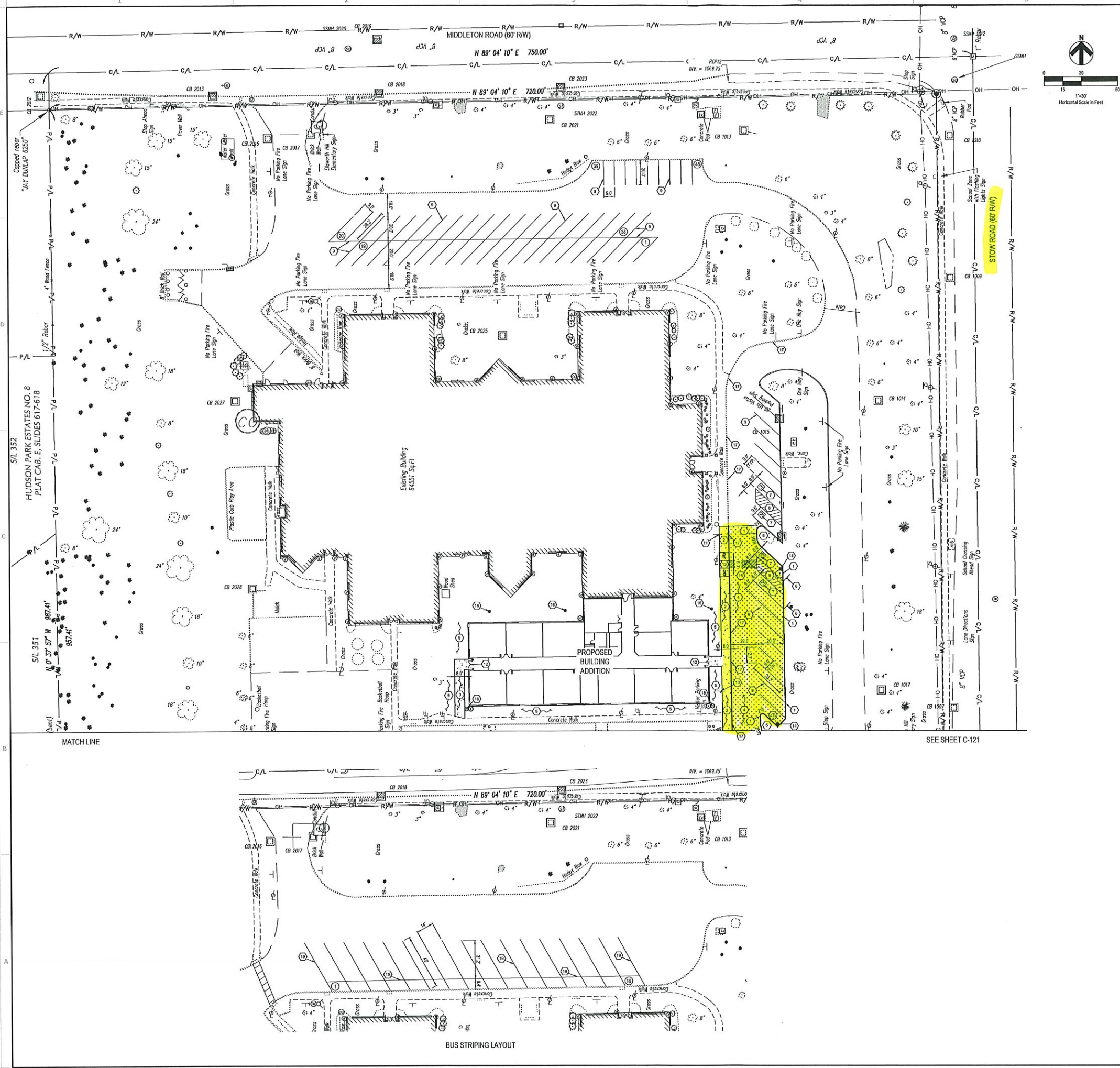
BASIS OF BEARING:
STATE PLANE GRID NORTH, NAD 83 (2011), ZONE 13A, Ohio North Zone.
ELEVATIONS ARE NAVD 83.
TIED BY GPS TO THE O.D.G.T. MGS.

PLAN REPRODUCTION WARNING
THE PLANS HAVE BEEN CREATED ON ANSI E (30"x42") SHEETS, REFER TO GRAPHIC SCALE.



Drawing Name: C:\2018\2018098\03 - Ellsworth Hill ES\DWG\C-Sheets\031809803 Plans.dwg
December 14, 2018 8:59 AM - mhhgton

Drawing Name: C:\01\820\180908\03 - Ellsworth Hill ES\DWG\C-Sheets\01 18090803 Plans.dwg
 December 14, 2018 9:59 AM - mihagan



- GENERAL SHEET NOTES**
- FOR STORM WATER POLLUTION PREVENTION SEE SHEET C-02.
 - FOR SITE GRADING INFORMATION REFER TO SHEET C-11 THROUGH C-12.
 - FOR SITE UTILITY INFORMATION REFER TO SHEET C-11 THROUGH C-12.
 - CONTRACTOR TO PROVIDE TEMPORARY SEED IN ALL DISTURBED AREAS PER SHEET C-02.

- SITE KEYNOTES**
- PROPOSED CONCRETE CURB PER SHEET C-501.
 - PROPOSED INTEGRAL CURBED CONCRETE WALK PER SHEET C-501.
 - PROPOSED CONCRETE WALK PER SHEET C-501.
 - PROPOSED HEAVY DUTY ASPHALT PAVEMENT PER SHEET C-501.
 - PROPOSED LANDSCAPE AREA, SEE SHEET L-101.
 - PROPOSED ADA PARKING SIGN PER SHEET C-501.
 - PROPOSED ADA PARKING SYMBOL PAINTED ON PAVEMENT PER SHEET C-501.
 - PROPOSED TRANSVERSE STRIPING PAINTED ON PAVEMENT PER SHEET C-501.
 - PROPOSED 4" WIDE PAINTED STRIPE ON PAVEMENT FOR PARKING STALL - WHITE FOR CAR STALLS, BLUE FOR ADA STALLS.
 - PROPOSED "FIRE LANE - NO PARKING" SIGN, SEE SHEET C-501.
 - PROPOSED "NO PARKING - DROP OFF" SIGN, SEE SHEET C-501.
 - PROPOSED FROST SLAB, SEE STRUCTURAL SHEETS.
 - PROPOSED ADA RAMP INSTALLED PER CURRENT ADA GUIDELINES AND SHEET C-501.
 - PROPOSED CATCH BASIN, SEE SHEET C-502.
 - PROPOSED CROSSWALK STRIPING PAINTED ON PAVEMENT PER SHEET C-501.
 - PROPOSED YARD DRAIN, SEE SHEET C-502.
 - CONTRACTOR SHALL PAINT THE CURBSIDE ALONG THE DROP OFF AREA RED TO DESIGNATE FIRE LANE.
 - PROPOSED CLEAN OUT, SEE SHEET C-502.
 - PROPOSED 4" WIDE PAINTED STRIPE ON PAVEMENT FOR BUS STALL - YELLOW.

LEGEND
 (SEE SHEET C-001 FOR GENERAL LEGEND)

- PROPOSED STANDARD DUTY ASPHALT PER SHEET C-501
- PROPOSED HEAVY DUTY ASPHALT PER SHEET C-501
- PROPOSED CONCRETE
- PROPOSED TRANSVERSE STRIPING
- CONSTRUCTION KEYNOTE

BENCHMARKS:

- "M" in Manter on Hydrant Barrel
 N 555306.7
 E 2267700.1
 ELEV. = 1008.88
- Bench Spike Southwest Side of Utility Pole
 N 555858.7
 E 2267568.0
 ELEV. = 1073.80
- Road Spike on North Side of Utility Pole
 N 555844.5
 E 2267398.0
 ELEV. = 1074.32
- "M" in Manter on Hydrant Barrel
 N 555858.7
 E 2267215.9
 ELEV. = 1003.57
- Box Out on East Side on Top of Light Pole Base
 N 555135.4
 E 2267238.4
 ELEV. = 1064.80

BASIS OF BEARING:
 STATE PLANE GEO. NORTH, NAD 83 (2011),
 GEOID 12B, OHIO NORTH ZONE.
 ELEVATIONS ARE NAVD 83.
 TIED BY GPS TO THE O.D.O.T. MBS.

Underground Utilities

2 Working Days before You Dig
 Call 800-368-5748 (Toll Free)
 Ohio Utilities Protection Service
 Non-members should Call Directly
 Call 800-925-0963 (Toll Free)
 Oil & Gas Producers Utility Protection Service

PLAN REPRODUCTION WARNING
 THE PLANS HAVE BEEN CREATED ON ANSI E (30"x42") SHEETS, REFER TO GRAPHIC SCALE.

ISSUED FOR:

DRAFT	12/11/18
BID	-
CONSTRUCTION	-
RECORD	-

PROJ. MGR. / DESIGNER:
 JP / MH

JOB NO.:
 2018098.03

C-122

GPD GROUP
 Civil, Pile, Schmitz, Burns & DeWaters, Inc.
 330 South Main Street
 Akron, OH 44311
 330.972.2100 Fax 330.572.2101
 Copyright: Civil, Pile, Schmitz, Burns & DeWaters, Inc. 2018

Hudson City Schools

**FOR REFERENCE ONLY
 NOT FOR CONSTRUCTION**

**ELLSWORTH HILL ELEMENTARY SCHOOL
 CLASSROOM WING ADDITION
 7750 STOW RD., HUDSON, OH 44236**

SITE PLAN

Drawing Name: C:\2018\01\16\08\03 - Ellsworth Hill ESD\DWG\C-Sheets\01 160803 Plans.dwg
 December 14, 2018 10:0 AM - mrlington



GENERAL SHEET NOTES
 1. FOR STORM WATER POLLUTION PREVENTION SEE SHEET C-02.
 2. CONTRACTOR TO PROVIDE TEMPORARY SEED IN ALL DISTURBED AREAS PER SHEET C-02.

REFERENCE NOTES

01 56 39	TREE & PLANT PROTECTION
31 10 00	SITE CLEARING
31 20 00	EARTH MOVING
31 82 00	TURF AND GRASSES
33 05 00	COMMON WORK RESULTS FOR UTILITIES
33 41 00	STORM UTILITY DRAINAGE PIPING
33 45 00	SUBDRAINAGE



LEGEND
 (SEE SHEET C-001 FOR GENERAL LEGEND)

---	PROPOSED CONTOUR
---	PROPOSED ELEVATION @ FINISHED GROUND ELEVATION
---	MATCH EXISTING ELEVATION
---	LIMITS OF DISTURBANCE
(A #)	APURTENANCES
---	PROPOSED SLT FENCE REFER TO SWPP DETAILS
---	PROPOSED CONSTRUCTION FENCE

EXISTING STRUCTURES

SPOT NO.	STRUCTURE DETAILS
CB 1001	EXISTING CONCRETE STRUCTURE R/W: 15' 0" x 11' 0" x 11' 0" ELEV: 1077.00
CB 2009	EXISTING CONCRETE STRUCTURE R/W: 15' 0" x 11' 0" x 11' 0" ELEV: 1077.00
CB 3004	EXISTING CONCRETE STRUCTURE R/W: 15' 0" x 11' 0" x 11' 0" ELEV: 1077.00

BENCHMARKS:

1. 1/2" in Water on Hydrant Bonnet
N 565306.7
E 2267700.1
ELEV. = 1093.98
2. Bench Spike Southwest Side of Utility Pole
N 565388.1
E 2267260.0
ELEV. = 1073.80
3. Railroad Spike on North Side of Utility Pole
N 565334.5
E 2267280.0
ELEV. = 1074.32
4. 1/2" in Water on Hydrant Bonnet
N 565388.7
E 2267123.9
ELEV. = 1083.57
5. Box Out on East Side on Top of Light Pole Base
N 565135.4
E 2267284.4
ELEV. = 1084.80

BASIS OF BEARING:
 STATE PLANE, GRS NORTH, NAD 83 (2011),
 GEOID 12B, GRS NORTH ZONE.
 ELEVATIONS ARE NAVD 83.
 TIED BY OPS TO THE G.D.O.T. MRS.

Underground Utilities

2 Working Days Before You Dig
 Call 800-363-2764 (Toll Free)
 Ohio Utilities Protection Service
 Non-emergencies Must Be Called Directly
 Call 800-915-0908 (Toll Free)
 Oil & Gas Producers Utility Protection Service

REV.	DATE	DESCRIPTION

**FOR REFERENCE ONLY
 NOT FOR CONSTRUCTION**

**ELLSWORTH HILL ELEMENTARY SCHOOL
 CLASSROOM WING ADDITION
 7750 STOW RD., HUDSON, OH 44236**

GRADING AND UTILITY PLAN

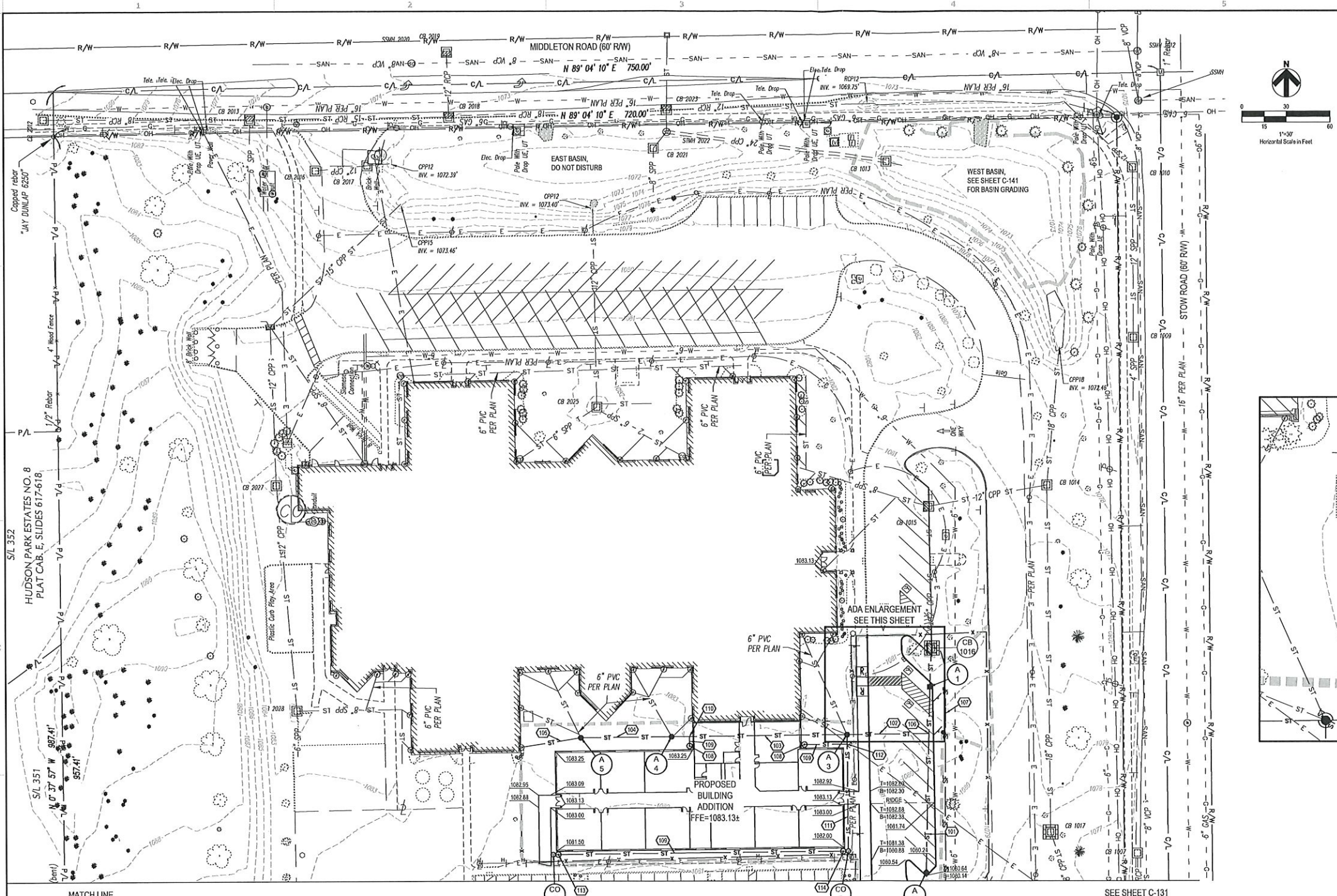
ISSUED FOR:	DATE
DRAFT	12/11/18
BID	-
CONSTRUCTION	-
RECORD	-

PROJECT MANAGER	DESIGNER
JP	MH

JOB NO.
2018098.03

C-131

PLAN REPRODUCTION WARNING
 THE PLANS HAVE BEEN CREATED ON ANSI E (30"x42") SHEETS, REFER TO GRAPHIC SCALE.

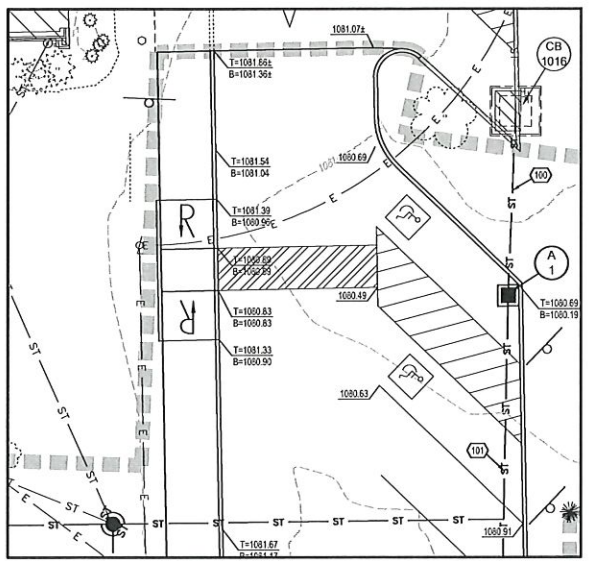
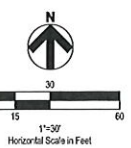


GENERAL SHEET NOTES

- FOR STORM WATER POLLUTION PREVENTION SEE SHEET C-02.
- CONTRACTOR TO PROVIDE TEMPORARY SEED IN ALL DISTURBED AREAS PER SHEET C-02.

UTILITY KEYNOTES

- 100 26 LF OF 12" HDPE @ 1.00%
- 101 126 LF OF 12" HDPE @ 1.00%
- 102 85 LF OF 12" HDPE @ 1.00%
- 103 119 LF OF 12" HCP @ 1.00%
- 104 62 LF OF 12" HDPE @ 1.00%
- 105 41 LF OF 6" PVC @ 1.00%
- 106 PROPOSED 12"x12" WYE
- 107 PROPOSED S&T FENCE
- 108 D.S. = 1083.25
- 109 8" PVC @ 1.0% MIN
- 110 PROPOSED 8" PVC CONNECTION UTILIZING A FERROUS SLEEVE
- 111 12" PVC @ 1.0% MIN
- 112 12" X12"X4" TEE
- 113 D.S. = 1079.30
- 114 D.S. = 1077.30



LEGEND
(SEE SHEET C-01 FOR GENERAL LEGEND)

- PROPOSED CONTOUR
- PROPOSED ELEVATION @ FINISHED GROUND ELEVATION
- MATCH EXISTING ELEVATION
- LIMITS OF DISTURBANCE
- PROPOSED STORM SEWER
- Ⓜ APURTENANCES
- Ⓢ UTILITY CONSTRUCTION KEYNOTE
- PROPOSED S&T BARRIER REFER TO SWPP DETAILS
- SF PROPOSED S&T FENCE REFER TO SWPP DETAILS
- PROPOSED CONSTRUCTION FENCE

BENCHMARKS:

1. "M" in Muller on Hydrant Barrel
N 58583.7
E 2267700.1
ELEV. = 1089.98
2. Bench Spike Southwest Side of Utility Pole
N 58583.6
E 2267588.0
ELEV. = 1073.80
3. Railroad Spike on North Side of Utility Pole
N 58583.4
E 2267399.0
ELEV. = 1074.32
4. "M" in Muller on Hydrant Barrel
N 585828.7
E 2267723.9
ELEV. = 1083.57
5. Box Out on East Side on Top of Light Pole Base
N 58583.4
E 2267236.4
ELEV. = 1084.80

BASIS OF BEARING:

STATE PLANE (RHD NORTH, NAD 83 (2011))
COORD 13B, Ohio NORTH ZONE.
ELEVATIONS ARE NAVD 83.
TIED BY GPS TO THE O.D.B.T. MRS.

EXISTING STRUCTURES		PROPOSED STRUCTURES		PROPOSED STRUCTURES	
STRUCT. ID	STRUCTURE DETAILS	STRUCT. ID	STRUCTURE DETAILS	STRUCT. ID	STRUCTURE DETAILS
CB 101	EXISTING CATCH BASIN (REMOVED)	A 1	PROPOSED CATCH BASIN (SEE SHEET C-502) R/M=1080.19 INV. 12' (12)-1076.62	CO 1	PROPOSED CLEAN (SEE SHEET C-502) R/M=1081.20 INV. 8' (8)-1077.30
CB 102	EXISTING CATCH BASIN (REMOVED)	A 2	PROPOSED CATCH BASIN (SEE SHEET C-502) R/M=1080.14 INV. 12' (12)-1076.62	CO 2	PROPOSED CLEAN OUT (SEE SHEET C-502) R/M=1081.20 INV. 8' (8)-1077.30
		A 3	PROPOSED YARD DRAIN (SEE SHEET C-502) R/M=1082.16 INV. 8' (8)-EXIST. INVERT TO BE FIELD VERIFIED		
		A 4	PROPOSED YARD DRAIN (SEE SHEET C-502) R/M=1082.16 INV. 8' (8)-EXIST. INVERT TO BE FIELD VERIFIED		
		A 5	PROPOSED YARD DRAIN (SEE SHEET C-502) R/M=1082.16 INV. 8' (8)-EXIST. INVERT TO BE FIELD VERIFIED		

Underground Utilities

2 Working Days Before You Dig
Call 600-363-2764 (Toll Free)
Ohio Utilities Protection Service
Non-members: Must Be Called Directly
Call 600-925-2963 (Toll Free)
OH & Gas Producers Utility Protection Service

PLAN REPRODUCTION WARNING
THE PLANS HAVE BEEN CREATED ON ANSI E (30"x42") SHEETS, REFER TO GRAPHIC SCALE.

GPD GROUP
Civil, P/E, Survey, Storm & Drainage, Inc.
530 South Main Street
Akron, OH 44311
330.973.2100 Fax 330.572.2101
Copyright: Civil, P/E, Survey, Storm & Drainage, Inc. 2011

Hudson City Schools®

REV.	DATE	DESCRIPTION

FOR REFERENCE ONLY
NOT FOR CONSTRUCTION

ELLSWORTH HILL ELEMENTARY SCHOOL
CLASSROOM WING ADDITION
7750 STOW RD., HUDSON, OH 44236

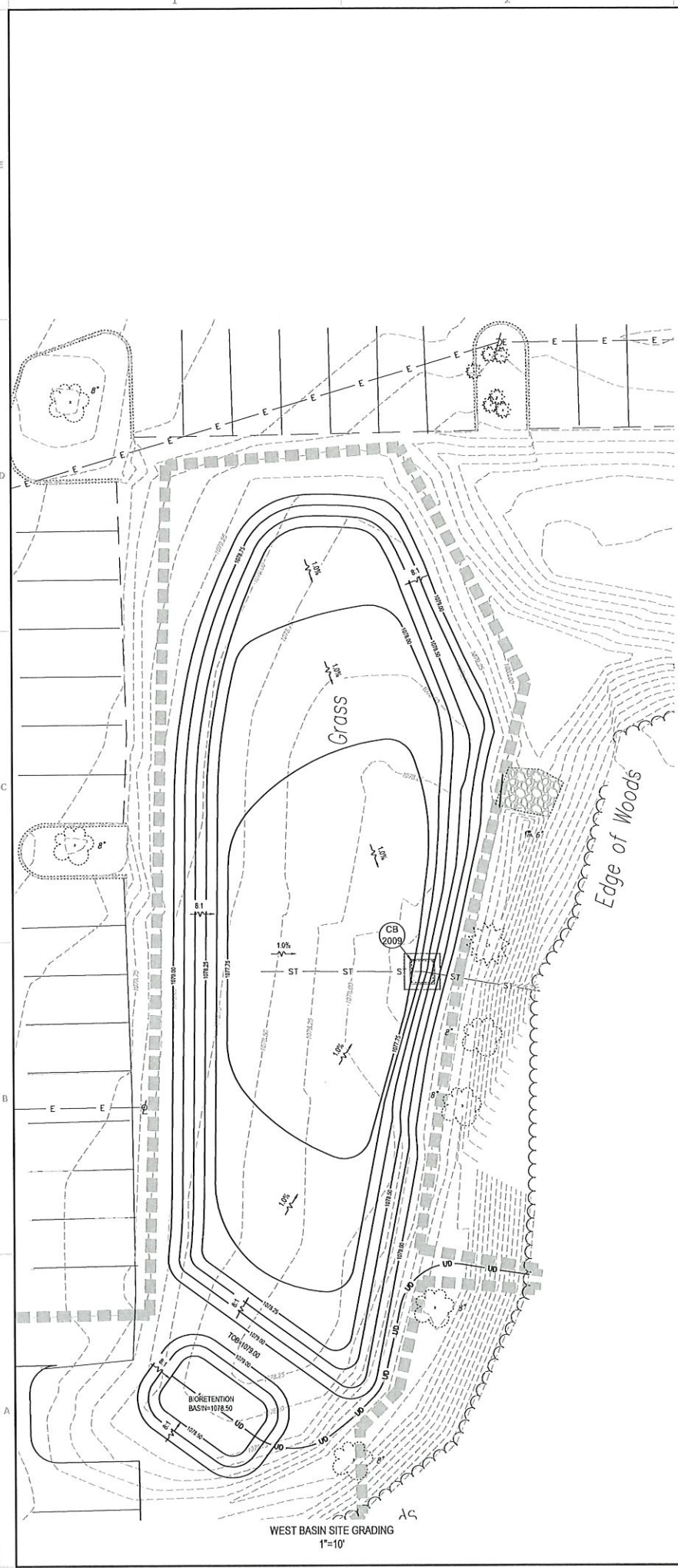
GRADING AND UTILITY PLAN

ISSUED FOR:	
DRAFT	12/17/18
BID	-
CONSTRUCTION	-
RECORD	-
PROJECT MANAGER	DESIGNER
JP	MH

JOB NO.
2018098.03

C-132

Drawing Name: C:\2018\201809\03 - Ellsworth Hill ESD\DWG\Sheet\20180903 Plans.dwg
 December 14, 2018 10:11 AM - mibrogan



WEST BASIN SITE GRADING
1"=10'

LEGEND
(SEE SHEET C-001 FOR GENERAL LEGEND)

	PROPOSED 0.25' CONTOUR
	EXISTING 0.25' CONTOUR
	LIMITS OF DISTURBANCE
	PROPOSED DRAINAGE SLOPE & DIRECTION



GENERAL SHEET NOTES

- FOR STORM WATER POLLUTION PREVENTION SEE SHEET C-002.
- CONTRACTOR TO PROVIDE TEMPORARY SEED IN ALL DISTURBED AREAS PER SHEET C-002.

REFERENCE NOTES

01 56 39	TREE & PLANT PROTECTION
31 10 00	SITE CLEARING
31 20 00	EARTH MOVING
31 60 00	TURF AND GRASSES
33 05 00	COMMON WORK RESULTS FOR UTILITIES
33 41 00	STORM UTILITY DRAINAGE PIPING
33 45 00	SUBDRAINAGE



BENCHMARKS:

- "M" in Waller on Hydrant Boxel
N 565306.7
E 2287900.1
ELEV. = 1020.98
- Bench Spike Southwest Side of Utility Pole
N 565336.1
E 2287508.0
ELEV. = 1021.80
- Rebarrod Spike on North Side of Utility Pole
N 565354.5
E 2287399.0
ELEV. = 1024.32
- "W" in Waller on Hydrant Boxel
N 565288.7
E 2287233.9
ELEV. = 1023.57
- Bar Cut on East Side on Top of Light Pole Base
N 565153.4
E 2287236.4
ELEV. = 1024.80

BASIS OF BEARING:
 STATE PLANE GRID NORTH, NAD 83 (2011),
 GEOID 12B, GND NORTH ZONE.
 ELEVATIONS ARE NAVD 88.
 TIED BY GPS TO THE O.D.G.T. M.S.

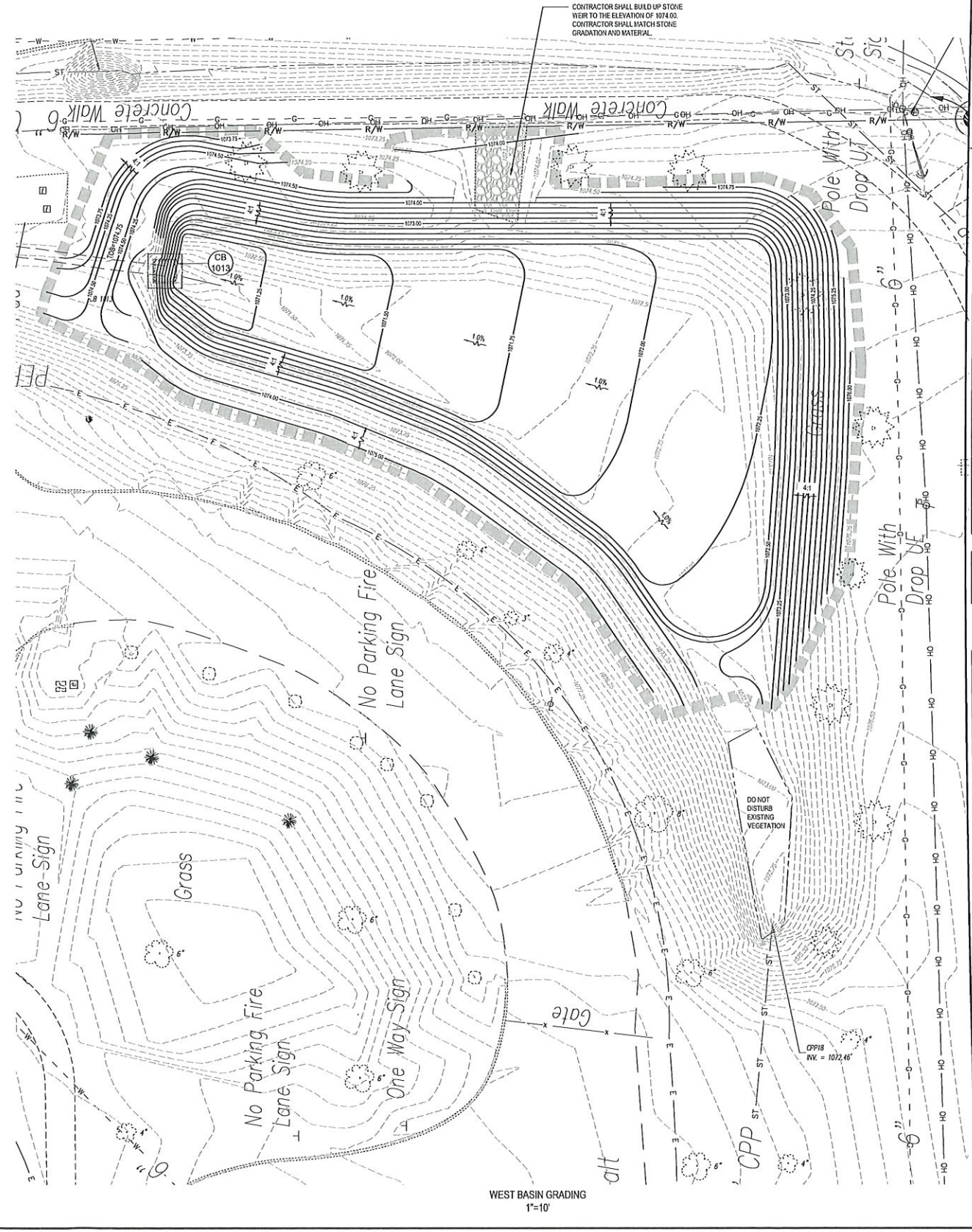
Underground Utilities

2 Working Days Before You Dig
 Call 800-367-2764 (Toll Free)
 One-Utility Protection Service
 Non-emergencies
 Must Be Called Freely
 Call 800-925-0918 (Toll Free)
 Oil & Gas Producers Utility Protection Service

PLAN REPRODUCTION WARNING
 THE PLANS HAVE BEEN CREATED ON ANSI E (30"x42") SHEETS, REFER TO GRAPHIC SCALE.

EXISTING STRUCTURES

STRUCT. ID	STRUCTURE DETAILS
CB 1013	EXISTING CONCRETE STRUCTURE 18'x10'x10' CB NO. 4 REINFORCING CABLE/PILE
CB 2009	EXISTING CONCRETE STRUCTURE 18'x10'x10' CB NO. 4 REINFORCING CABLE/PILE



WEST BASIN GRADING
1"=10'



REV.	DATE	DESCRIPTION

FOR REFERENCE ONLY
NOT FOR CONSTRUCTION

ELLSWORTH HILL ELEMENTARY SCHOOL
 CLASSROOM WING ADDITION
 7750 STOW RD., HUDSON, OH 44236

ENLARGED GRADING PLAN

ISSUED FOR:

DRAFT	12/11/18
BID	
CONSTRUCTION	
RECORD	

PROJECT MANAGER: JP
 DESIGNER: MH

JOB NO.
2018098.03

C-141

PLANT LIST - TREES

Symbol	Botanical Name	Common Name	Qty.	Min. Size	Condition	Remarks
Ar	Acer rubrum 'Somerset'	Somerset Red Maple	3	2" Cal.	B&B	Specimen
Cc	Cercis canadensis	Redbud Tree	3	10" H Min.	B&B	Multi-Stem
Ma	Malus 'Adirondack'	Adirondack Crabapple	4	2" Cal.	B&B	Specimen
Pa	Picea abies	Norway Spruce	4	6" H Min.	B&B	Specimen
Or	Quercus coccinea	Scarlet Oak	3	2" Cal.	B&B	Specimen

PLANT LIST - SHRUBS

Symbol	Botanical Name	Common Name	Qty.	Min. Size	Condition	Remarks
Bx	Buxus 'Wintergreen'	Wintergreen Boxwood	28	24" H	B&B	3' o/c
Fs	Forsythia x intermedia 'Lynwood Gold'	Lynwood Gold Forsythia	16	4' H	B&B	Per Plan
Hh	Hemerocallis 'Happy Returns'	Happy Returns Daylily	35	No. 1	Cont.	1.5' o/c
It	Ilex virginica 'Little Henry'	Little Henry Dwarf Sweetgale	18	18" H, No. 3	Cont.	3' o/c
Jc	Juniperus communis 'Effusa'	Effusa Juniper	13	15" H, No. 3	Cont.	3' o/c
Jv	Juniperus virginiana 'Grey Owl'	Grey Owl Juniper	26	18" H, No. 3	Cont.	4' o/c

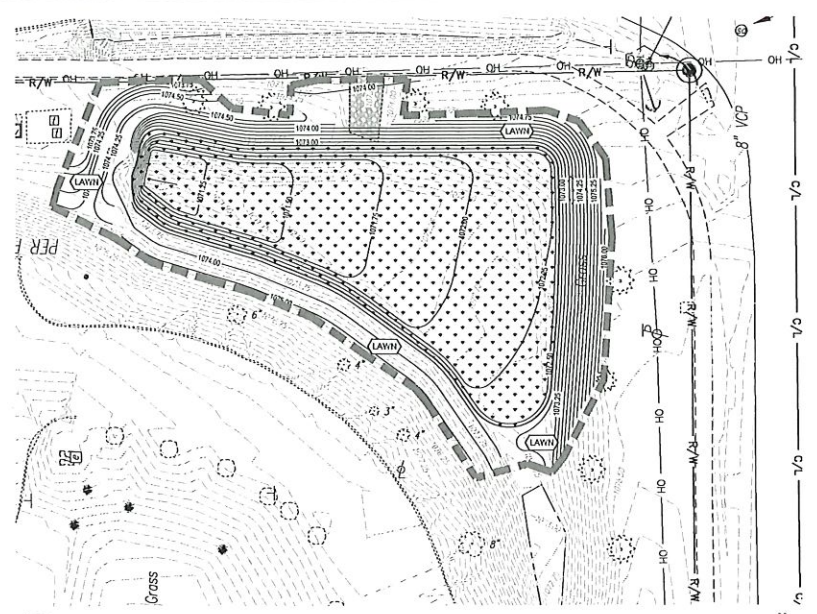
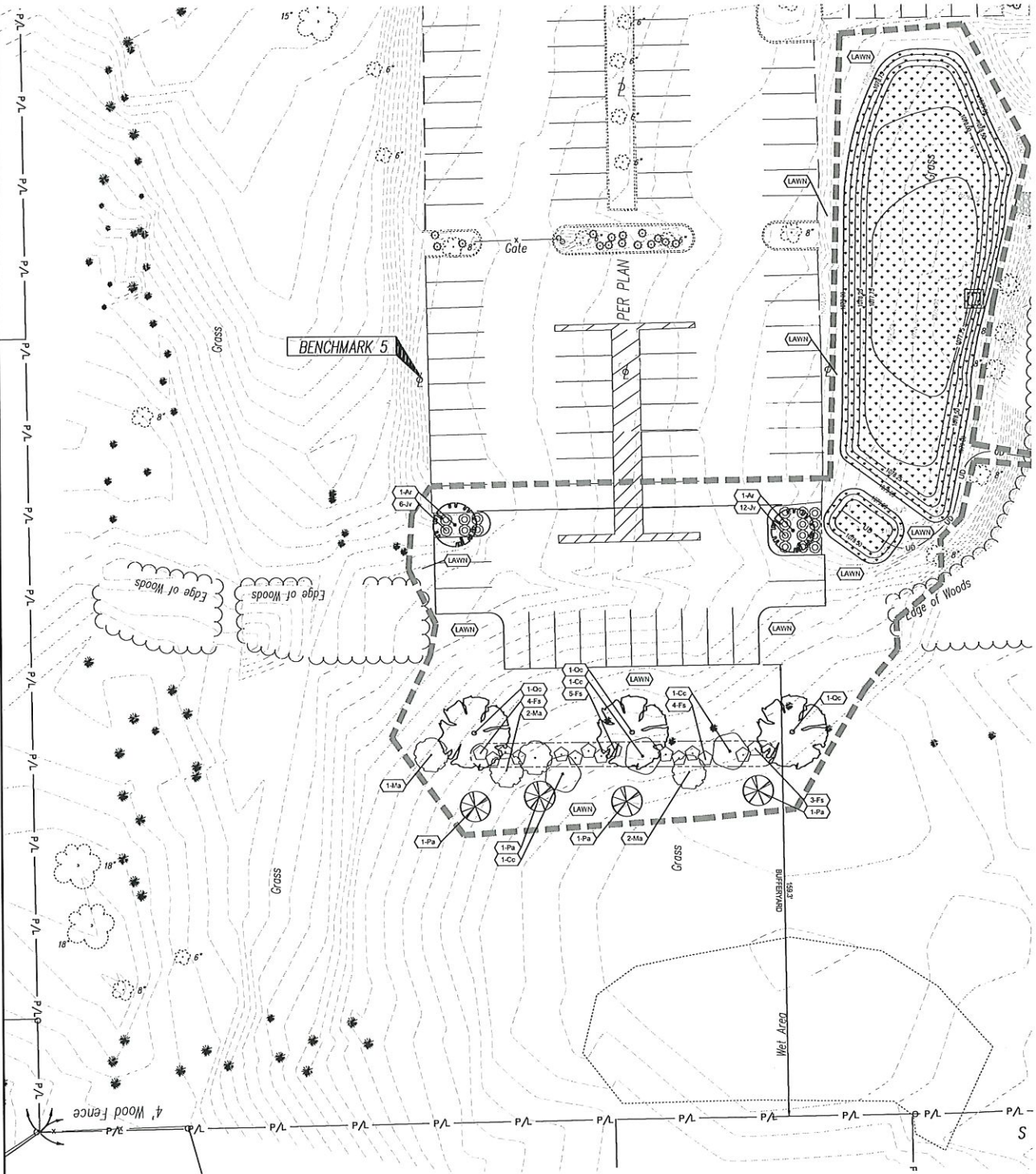
CITY OF HUDSON CODE COMPLIANCE

LANDSCAPE BUFFERYARD D (6 PLANT MULTIPLIER)

138 LF	REQUIRED	EXISTING	PROVIDED
CANOPY TREE	3	0	3
UNDERSTORY TREE	7	0	7
SHRUBS	15	0	15
EVERGREEN TREE	6	5	4

PROPOSED PARKING LOT ADDITION LANDSCAPE

20 PARKING SPACES	REQUIRED	PROVIDED
LANDSCAPE (SF)	320 SF	502 SF
CANOPY TREE	2 TREES	2 TREES
SHRUBS	8 SHRUBS	18 SHRUBS



GENERAL SHEET NOTES

- ALL DISTURBED AREAS NOT TO BE LANDSCAPE BEDS OR PAVED AREAS SHALL BE SEEDED.

REFERENCE SPECIFICATION

- 329113 SOIL PREPARATION
- 32200 TURF AND GRASSES
- 32300 PLANTS

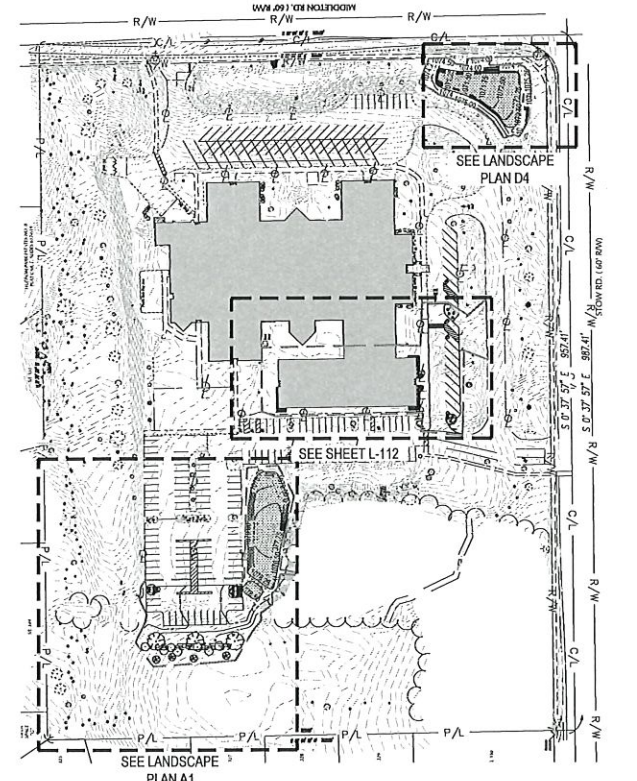
LEGEND

- (E-X) PROPOSED PLANT QUANTITY AND SYMBOL
- (LAWN) PROPOSED LAWN AREA
- (Tree symbols) PROPOSED DECIDUOUS TREES
- (Tree symbols) PROPOSED EVERGREEN TREES
- (Shrub symbols) PROPOSED SHRUBS
- PROPOSED TRENCHED BED EDGE
- LIMITS OF DISTURBANCE
- (Dotted area) PROPOSED BASIN SEED MIX AREA

Underground Utilities

2 Working Days Before You Dig
Call 800-362-2764 (Toll Free)
Ohio Utilities Protection Service
Non-members Must Be Called Directly
Call 800-925-0988 (Toll Free)
Oil & Gas Producers Utility Protection Service

PLAN REPRODUCTION WARNING
THE PLANS HAVE BEEN CREATED ON ANSI E (30"x42") SHEETS, REFER TO GRAPHIC SCALE.



REV.	DATE	DESCRIPTION

FOR REFERENCE ONLY
NOT FOR CONSTRUCTION

ELLSWORTH HILL ELEMENTARY SCHOOL
CLASSROOM WING ADDITION
7750 STOW RD., HUDSON, OH 44236
LANDSCAPE PLAN

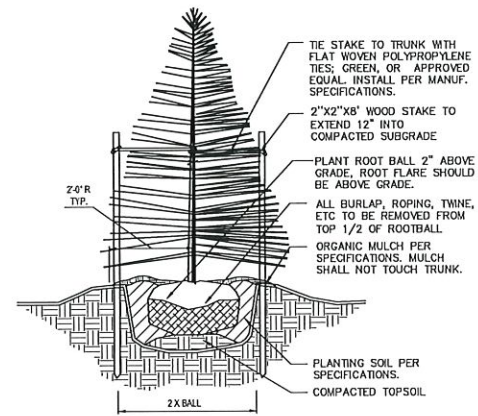
ISSUED FOR:	
DRAFT	12/1/18
BID	-
CONSTRUCTION	-
RECORD	-

PROJECT MANAGER	DESIGNER
JP	AMS

JOB NO.
2018098.03

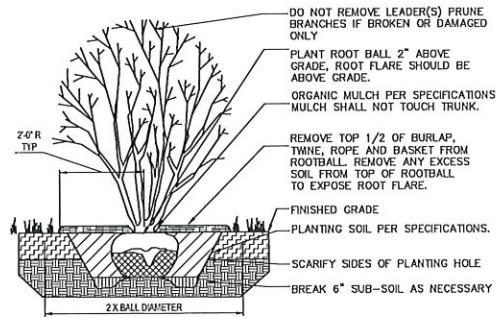
L-111

Drawing Name: C:\2018\2018098.03 - Ellsworth Hill ESD\DWG\L-111\2018098.03 Landscape Sheets.dwg
December 14, 2018 10:57 AM - jwh



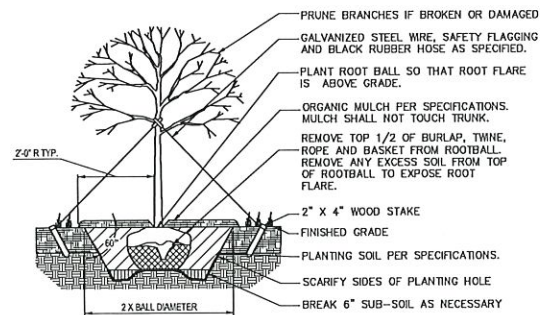
- GENERAL NOTES:**
- IF ROOTBALL IS WRAPPED IN NON-BIODEGRADABLE BURLAP, REMOVE ENTIRE WRAP AFTER PLACED IN PIT. WHEN BACKFILLING PLANT PIT, PLACE PLANTING SOIL IN TWO LIFTS. AFTER FIRST LIFT, PUDDLE SOIL IN WITH WATER TO REMOVE ALL AIR POCKETS. PLACE SECOND LIFT AND CONTINUE TO PUDDLE AND FILL AS NECESSARY.
 - ALL EVERGREEN TREES SHALL HAVE HEAVY, SEMI-SHEARED WELL SHAPED CROWNS.

D1 PLANTING DETAIL: EVERGREEN TREE
N.T.S.



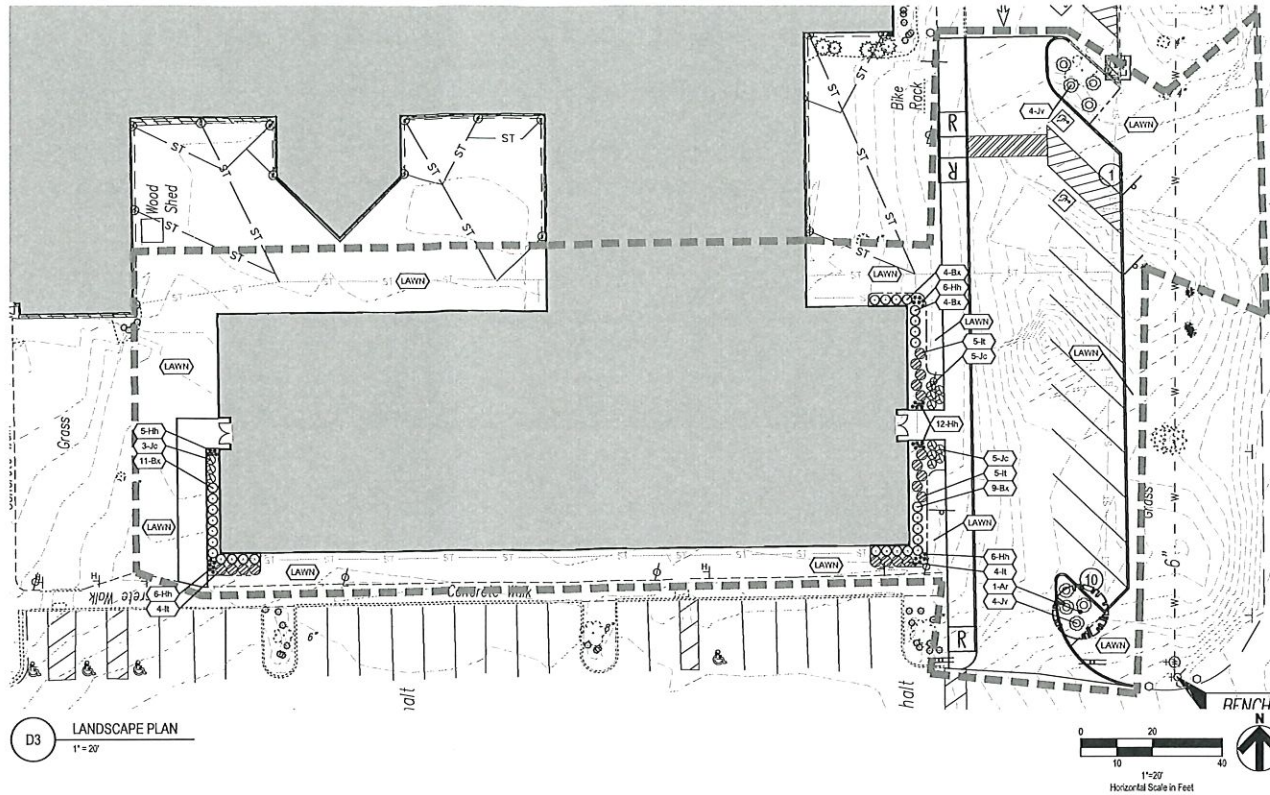
- GENERAL NOTES:**
- IF ROOTBALL IS WRAPPED IN NON-BIODEGRADABLE BURLAP, REMOVE ENTIRE WRAP AFTER PLACED IN PIT. WHEN BACKFILLING PLANT PIT, PLACE PLANTING SOIL IN TWO LIFTS. AFTER FIRST LIFT, PUDDLE SOIL IN WITH WATER TO REMOVE ALL AIR POCKETS. PLACE SECOND LIFT AND CONTINUE TO PUDDLE AND FILL AS NECESSARY.

B1 PLANTING DETAIL: MULTI-STEMMED TREE
N.T.S.

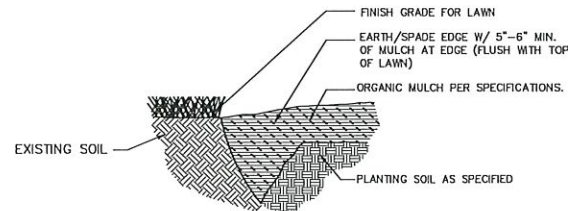


- GENERAL NOTES:**
- IF ROOTBALL IS WRAPPED IN NON-BIODEGRADABLE BURLAP, REMOVE ENTIRE WRAP AFTER PLACED IN PIT. WHEN BACKFILLING PLANT PIT, PLACE PLANTING SOIL IN TWO LIFTS. AFTER FIRST LIFT, PUDDLE SOIL IN WITH WATER TO REMOVE ALL AIR POCKETS. PLACE SECOND LIFT AND CONTINUE TO PUDDLE AND FILL AS NECESSARY.

A1 PLANTING DETAIL: DECIDUOUS TREE
N.T.S.

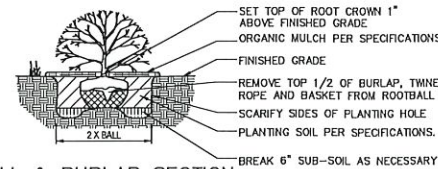


D3 LANDSCAPE PLAN
1"=20'

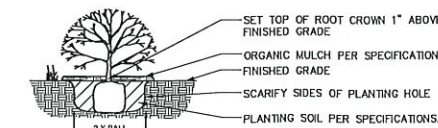


- GENERAL NOTES:**
- USE WHEREVER MULCHED PLANTINGS TRANSITION TO TURF AREAS, INCLUDING ALL TREE MULCH RINGS, SHRUB BEDS, MASS PLANTING BEDS, ETC...

C3 EARTH/SPADE LANDSCAPE EDGE
N.T.S.



BALL & BURLAP SECTION



CONTAINER SECTION

- GENERAL NOTES:**
- PRUNE ROOTS IF BALL IS ROOTBOUND. REMOVE ALL CONTAINERS AND NON-BIODEGRADABLE BURLAP. WHEN BACKFILLING PLANT PIT, PLACE PLANTING SOIL IN TWO LIFTS. AFTER FIRST LIFT, PUDDLE SOIL IN WITH WATER TO REMOVE ALL AIR POCKETS. PLACE SECOND LIFT AND CONTINUE TO PUDDLE AND FILL AS NECESSARY.

A3 PLANTING DETAIL: SHRUB
N.T.S.

GENERAL SHEET NOTES

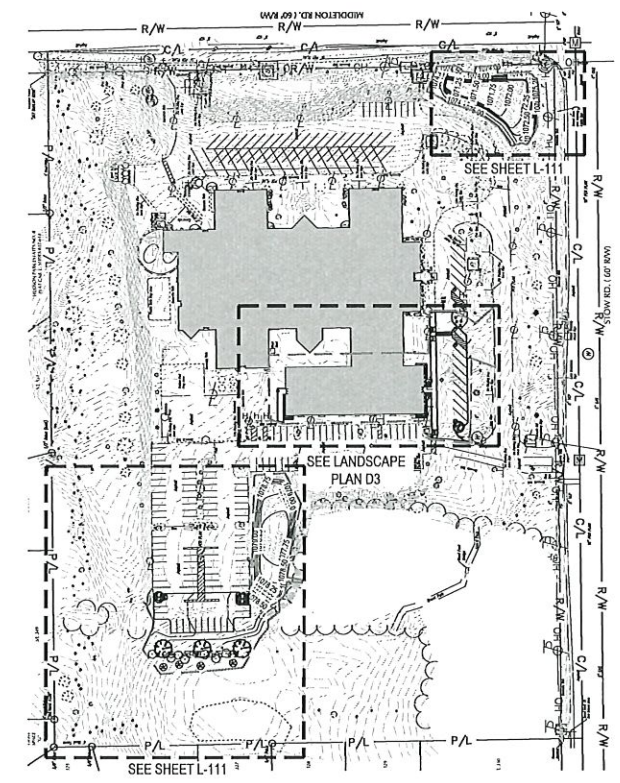
- ALL DISTURBED AREAS NOT TO BE LANDSCAPE BEDS OR PAVED AREAS SHALL BE SEEDED.

REFERENCE SPECIFICATION

- 329113 SOIL PREPARATION
- 329200 TURF AND GRASSES
- 329300 PLANTS

LEGEND

- PROPOSED PLANT QUANTITY AND SYMBOL
- PROPOSED LAWN AREA
- PROPOSED DECIDUOUS TREES
- PROPOSED SHRUBS
- PROPOSED TRENCHED BED EDGE
- LIMITS OF DISTURBANCE



A5 KEY PLAN
1"=100'

GPD GROUP
Civil, Pkg, Schmeer, Burns & DeFronzo, Inc.
530 South Main Street
Akron, OH 44311
330.572.2100 Fax 330.572.2101
Copyright: © 2018 GPD Group, Burns & DeFronzo, Inc. 2018

Hudson City Schools*

REV.	DATE	DESCRIPTION

FOR REFERENCE ONLY
NOT FOR CONSTRUCTION

ELLSWORTH HILL ELEMENTARY SCHOOL
CLASSROOM WING ADDITION
7750 STOW RD., HUDSON, OH 44236

LANDSCAPE PLAN AND DETAILS

ISSUED FOR:	
DRAFT	12/17/18
BID	-
CONSTRUCTION	-
RECORD	-

PROJECT MANAGER	DESIGNER
JP	AMS

JOB NO.
2018098.03

L-112

