

East Woods/McDowell Elementary Schools - Parking Calculations
Hudson City School District

December 16, 2019



Per the City of Hudson Planning and Zoning Code, Chapter 1207.12, the minimum off-street parking for an elementary school shall be provided at the rate of two spaces per classroom, plus one space for every 3 (three) seats in the largest assembly hall. The expanded/renovated East Woods Elementary School will contain 51 classrooms. Additionally, the largest assembly hall is the main gymnasium which will have seating for 500 spectators. Therefore, the parking requirement shall be 273 spaces (51 classrooms x 2 = 102 spaces; 500 spectators/3 = 167 spaces; 102+167=269 spaces). The renovated McDowell Elementary School will contain 22 classrooms. Additionally, the multi-purpose room provides seating for approximately 200 people. Therefore, the parking requirement shall be 111 spaces (22 classrooms x 2 = 44 spaces; 200 multi-purpose room occupants/3 = 67 spaces; 44+67=111 spaces). Total parking requirement for East Woods and McDowell; 380 spaces. Parking provided per the attached site plan is as follows;

East Woods Elementary School	Existing Spaces	Provided Spaces
North Staff Lot	74	63
South Staff Lot	25	74
Visitors	0	11
Service Area	5	5
Natatorium	16	17
Total East Woods	120	170
McDowell Elementary School	Existing Spaces	Provided Spaces
Staff Lot	76	61
Visitors	0	6
Total McDowell Elementary School	76	67
Bus Lot/Event Parking	0	131
Total Parking Spaces Provided	196	368



HUDSON CENTRAL CAMPUS - EAST WOODS/MCDOWELL PLAN

Hudson, Ohio

12.16.2019



Hudson City Schools®

THE COLORS AND MATERIALS SHOWN IN THIS RENDERING ARE CLOSE APPROXIMATIONS AND NOT AN EXACT MATCH. RENDERING IS TO BE CONSIDERED FOR VISUAL DESIGN INTENT ONLY AND NOT FOR CONSTRUCTION.



1.800.955.4731 www.gpdgroup.com



1 OVERALL FIRST FLOOR PLAN - PRESENTATION
1" = 20'-0"

EAST WOODS ELEMENTARY SCHOOL

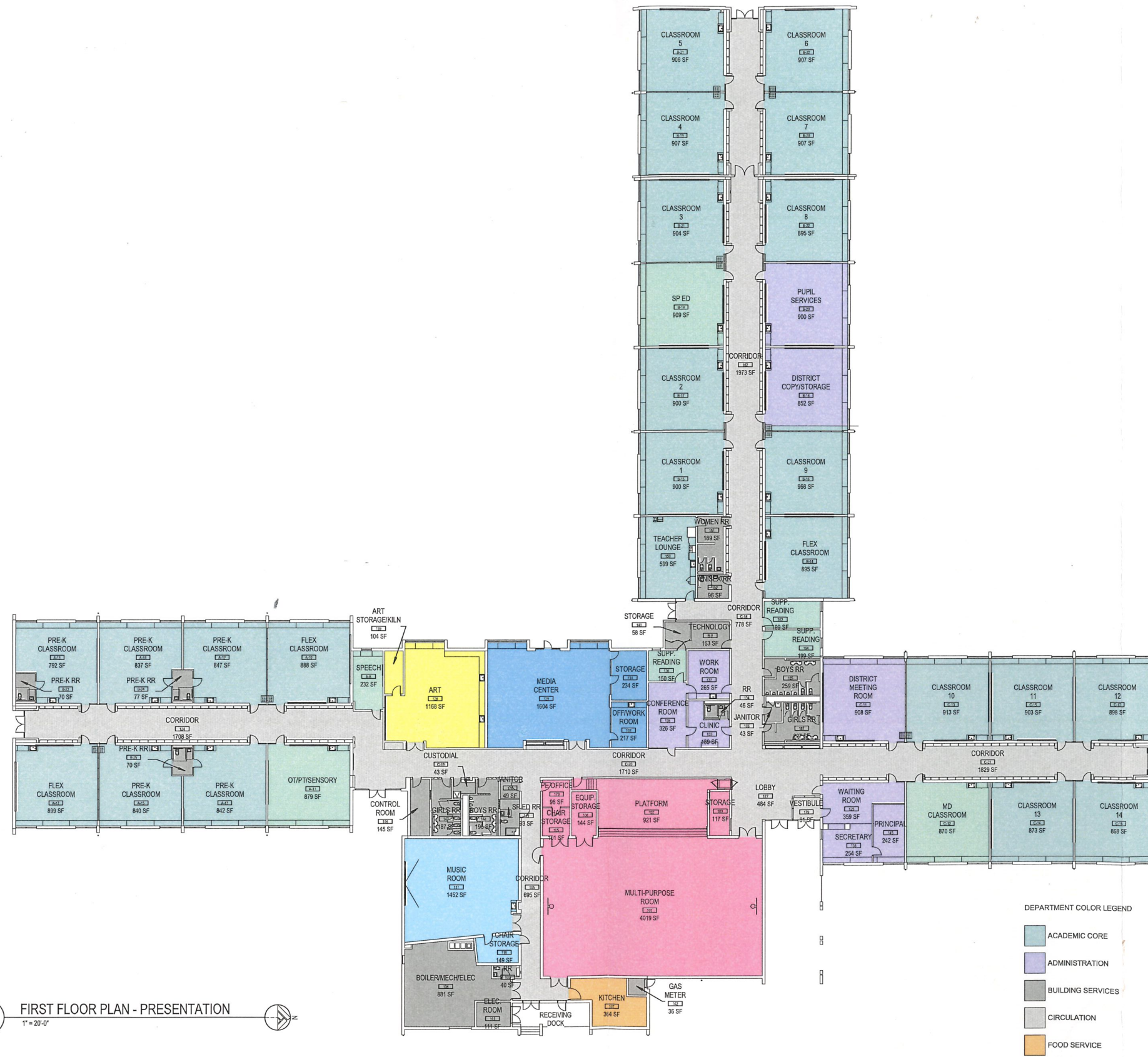
120 HAYDEN PARKWAY
HUDSON OHIO 44236

December 5, 2019 - DRAFT



THE COLORS SHOWN IN THIS RENDERING ARE CLOSE APPROXIMATIONS. BECAUSE OF INK VARIATIONS AND DIFFERENCES IN PRINTERS, AN EXACT COLOR MATCH CANNOT BE ACHIEVED. THE VIEWER IS ADVISED TO USE THE RENDERING AS A GUIDE FOR THE ARRANGEMENT OF COLORS ON THE BUILDING, AND TO THEN REFER TO THE ACTUAL COLOR OF MATERIAL SAMPLES PROVIDED.





1 FIRST FLOOR PLAN - PRESENTATION
1" = 20'-0"

MCDOWELL ELEMENTARY SCHOOL RENOVATIONS

280 N. HAYDEN PARKWAY
HUDSON, OH 44236

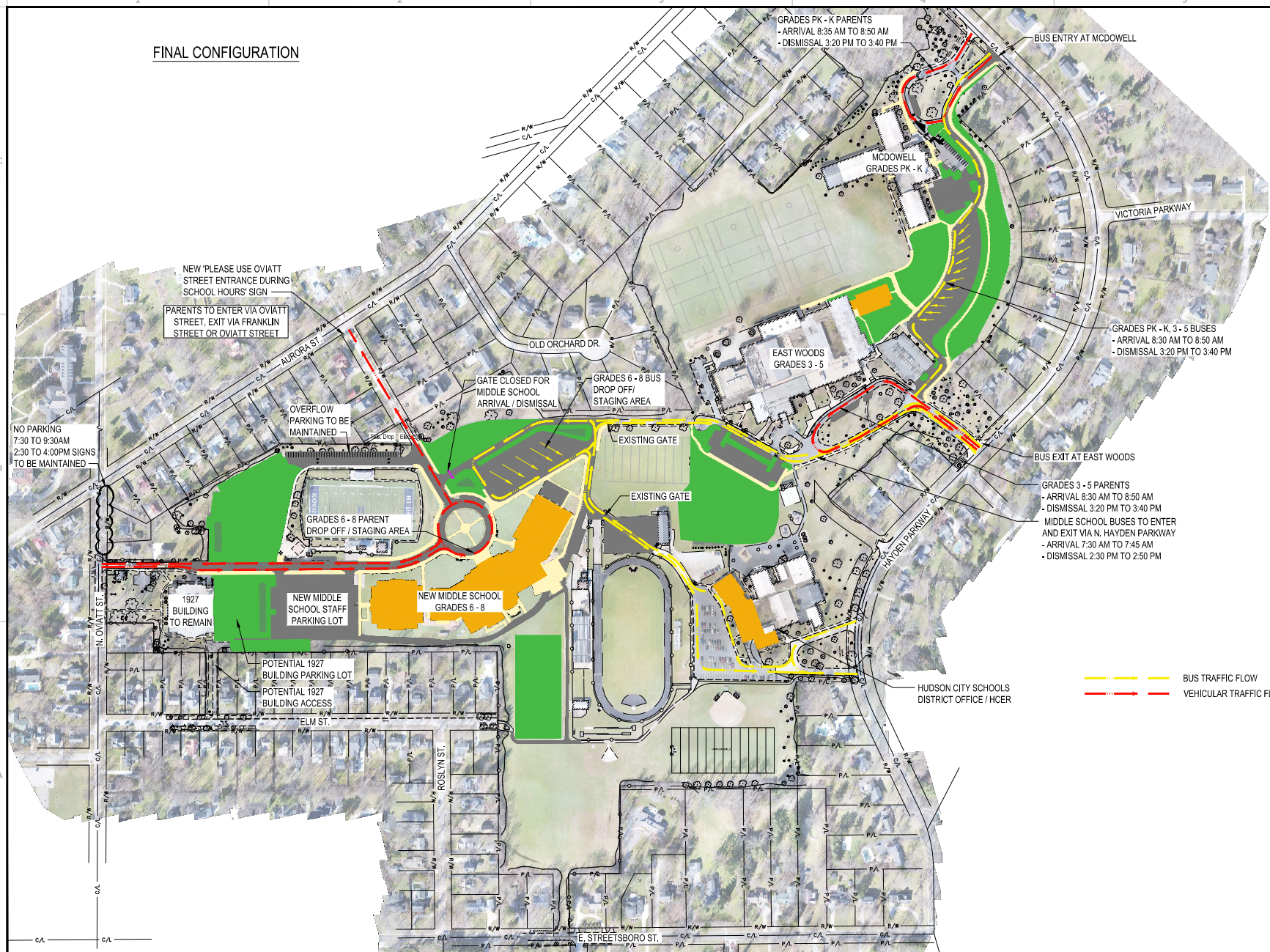
December 9, 2019 - DRAFT



THE COLORS SHOWN IN THIS RENDERING ARE CLOSE APPROXIMATIONS. BECAUSE OF INK VARIATIONS AND DIFFERENCES IN PRINTERS, AN EXACT COLOR MATCH CANNOT BE ACHIEVED. THE VIEWER IS ADVISED TO USE THE RENDERING AS A GUIDE FOR THE ARRANGEMENT OF COLORS ON THE BUILDING, AND TO THEN REFER TO THE ACTUAL COLOR OF MATERIAL SAMPLES PROVIDED.



FINAL CONFIGURATION



Drawing Name: I:\02098\02098.dwg
 Project Name: Hudson City Schools - East Woods
 Date: December 13, 2018 3:13 PM - 11/18/18
 Author: ESD/02098/Traffic Flow Mapping.dwg



REV.	DATE	DESCRIPTION

HUDSON CITY SCHOOLS
 HUDSON, OHIO 44326
CENTRAL CAMPUS
FINAL TRAFFIC FLOW

ISSUED FOR	DATE
PERMIT	-
BID	-
CONSTRUCTION	-
RECORD	-

PROJECT MANAGER	DESKMAN

JOB NO.
2018098.01

FINAL

REV.	DATE	DESCRIPTION

NOT FOR CONSTRUCTION

HUDSON CITY SCHOOLS
 EAST WOODS ELEMENTARY, 120 N. HAYDEN PKWY., HUDSON 44236
 MCCOWELL ELEMENTARY, 280 N. HAYDEN PKWY., HUDSON 44236
SITE PHOTOMETRIC PLAN

PROJECT NO.	DATE	SCALE
PH-101	10/2017	AS SHOWN

DATE: 20180928.04

PH-101

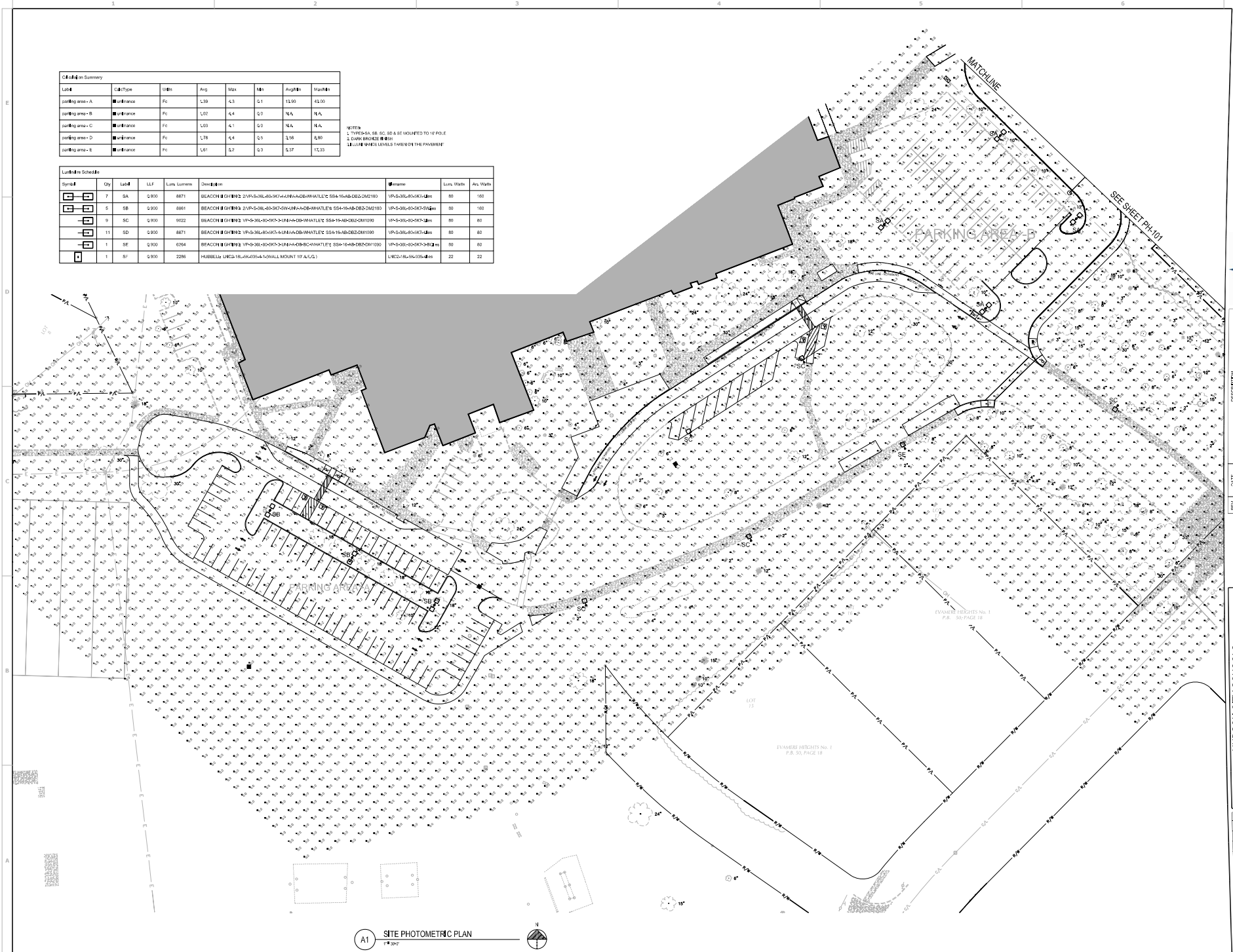
Condition Summary

Lot#	CalcType	Unit	Area	Max	Min	Height	Height
parking area - A	☐	☐	4.39	4.3	0.1	11.90	43.00
parking area - B	☐	☐	5.02	4.4	0.0	N.A.	N.A.
parking area - C	☐	☐	5.03	4.1	0.0	N.A.	N.A.
parking area - D	☐	☐	5.78	4.4	0.5	3.36	41.90
parking area - E	☐	☐	5.81	5.7	0.0	5.37	12.33

NOTE:
 1. TYPE SA, SB, SC, SD & SE MOUNTED TO 10 FOOT
 2. SAME BRIDGE HEAD
 3. ALL PAVEMENT LEVELS TAKEN ON THE PAVEMENT

Luminaire Schedule

Symbol	Qty	Lot#	LLF	Lum. Lumens	Direction	Name	Lum. Width	Acc. Width
☐	7	SA	0.900	8871	BEACON LIGHTING 21VP-S-38L-26-SKT-3W-1/4-1/4-DB-WHATLEY S&A-16-AB-DE2-DIG180	VP-S-38L-R-SKT-4in	80	160
☐	5	SB	0.900	8861	BEACON LIGHTING 21VP-S-38L-26-SKT-3W-1/4-1/4-DB-WHATLEY S&A-16-AB-DE2-DIG180	VP-S-38L-R-SKT-4in	80	160
☐	9	SC	0.900	8922	BEACON LIGHTING 1VP-S-36L-SO-CK-3-LUM-A-DB-WHATLEY S&A-16-AB-DE2-DIG180	VP-S-36L-R-SKT-4in	80	80
☐	11	SD	0.900	8871	BEACON LIGHTING 1VP-S-36L-SO-CK-3-LUM-A-DB-WHATLEY S&A-16-AB-DE2-DIG180	VP-S-36L-R-SKT-4in	80	80
☐	1	SE	0.900	8964	BEACON LIGHTING 1VP-S-36L-SO-CK-3-LUM-A-DB-WHATLEY S&A-16-AB-DE2-DIG180	VP-S-36L-R-SKT-4in	80	80
☐	1	SE	0.900	2286	HUBBELL UFG-16-1/4-29-4-NHALL MOUNT 1/4 A.C.D.	UFG-16-1/4-29-4in	22	22



A1 SITE PHOTOMETRIC PLAN
 10/2017

Data Not to Scale. QPD GROUP INC. 130 South Main Street, Andover, MA 01810. QPD GROUP INC. 978.932.2026. Fax 978.932.2021.

REV.	DATE	DESCRIPTION

NOT FOR CONSTRUCTION

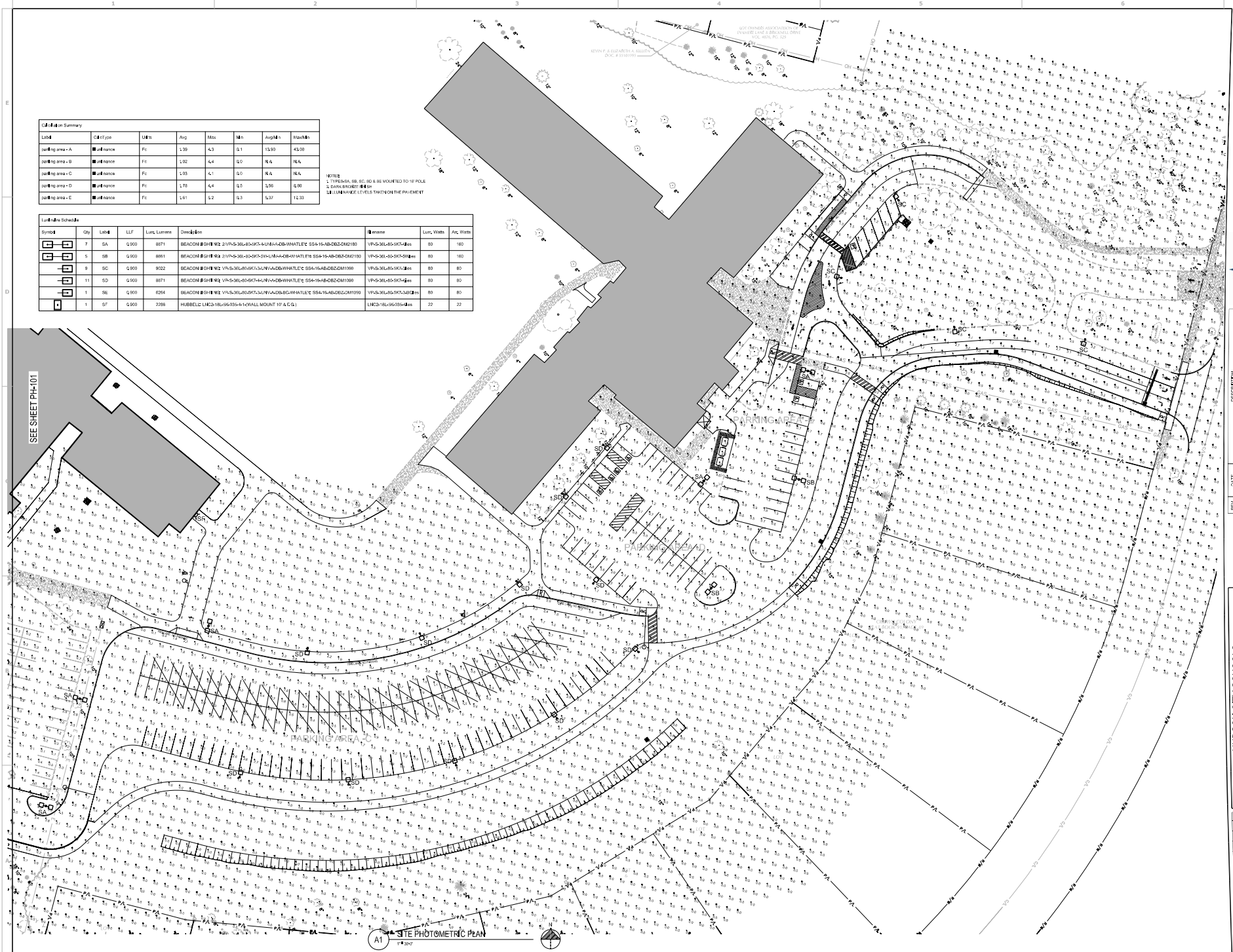
HUDSON CITY SCHOOLS
 HUDSON CITY SCHOOLS
 EAST WOODS ELEMENTARY, 120 N. HAYDEN PKWY., HUDSON 44236
 MCCOWELL ELEMENTARY, 280 N. HAYDEN PKWY., HUDSON 44236

SITE PHOTOMETRIC PLAN

PROJECT NO.	DATE
PH-102	10/2018

2018098.04

PH-102



Grid Data Summary

Label	Grid Type	Units	Avg	Max	Min	Avg/Min	Max/Min
parking area - A	all-inplace	Ft	1.39	4.3	0.1	15.00	45.00
parking area - B	all-inplace	Ft	1.02	4.4	0.0	N/A	N/A
parking area - C	all-inplace	Ft	1.03	4.1	0.0	N/A	N/A
parking area - D	all-inplace	Ft	1.78	6.4	0.5	3.96	6.90
parking area - E	all-inplace	Ft	1.61	5.0	0.3	5.37	12.33

NOTES:
 1. TYPES SA, SB, SC, SD & SE RECOMMENDED TO 16 POLE
 2. DARK BRONZE FINISH
 3. 18" HUB MOUNTED LIGHT FIXTURE ON THE PAVEMENT

Light Fixture Schedule

Symbol	Qty	Label	LF	Lum. Lumens	Direction	Brand	Lum. Watts	Ac. Watts
[Symbol]	7	SA	0.900	8971	BEACON LIGHTING 21VFS-36-40X5-4-1/4-1/4-2B-WHATLEY S54-16-AB-DBZCM1390	VFS-36-40-3KT-4-1/4	80	160
[Symbol]	1	SB	0.900	8981	BEACON LIGHTING 21VFS-36-40X5-4-1/4-1/4-2B-WHATLEY S54-16-AB-DBZCM1390	VFS-36-40-3KT-4-1/4	80	160
[Symbol]	9	SC	0.900	9022	BEACON LIGHTING VFS-36-40X5-4-1/4-1/4-2B-WHATLEY S54-16-AB-DBZCM1390	VFS-36-40-3KT-4-1/4	80	80
[Symbol]	11	SD	0.900	8971	BEACON LIGHTING VFS-36-40X5-4-1/4-1/4-2B-WHATLEY S54-16-AB-DBZCM1390	VFS-36-40-3KT-4-1/4	80	80
[Symbol]	1	SE	0.900	6264	BEACON LIGHTING VFS-36-40X5-4-1/4-1/4-2B-WHATLEY S54-16-AB-DBZCM1390	VFS-36-40-3KT-4-1/4	80	80
[Symbol]	1	ST	0.900	2386	HUBBELL LMC218L-36-35-4-1/4 WALL MOUNT 1P A/C 1	LMC218L-36-35-4-1/4	22	22

Data Not to Scale. All Dimensions are Approximate. All Measurements are in Feet. All Distances are in Feet. All Distances are in Feet. All Distances are in Feet.



ENGINEERING • 1140 Terex Road • Hudson, Ohio 44236 • (330) 342-1770

Date: December 27, 2019

To: Kris McMaster, City Planner, Community Development

From: Nate Wonsick, P.E., Assistant City Engineer

Re: **East Woods & McDowell School Improvements – 120 N. Hayden Pkwy.
Preliminary Engineering Approval - Viewpoint #19-1270**

The City of Hudson Engineering Department has reviewed the preliminary plan for the above referenced site and recommends preliminary approval. Note: The City of Hudson Engineering Standards (Engineering Standards) and Land Development Code (LDC) are available online at the City of Hudson Website www.hudson.oh.us under the Engineering Dept. and Community Development Department respectively. The standards are also available in print for a fee. Please contact our office (330-342-1770) if you would like a cost for the printed version.

Other agency approvals that will be needed prior to the City of Hudson Final Engineering acceptance include:

1. Summit Soil and Water and the Ohio EPA Notice of Intent.
2. Summit County Building Standards shall review the building structures; fire lines; and any retaining walls proposed on the site.
3. US Army Corp. of Engineers for any wetland disturbed areas, if applicable.
4. Northeast Ohio Regional Sewer District shall review the storm water management system.

Overall Comments:

5. The City of Hudson Engineering Standards will be reviewed as part of the improvement plan submittal of the project design. Note: Section 5 of the Engineering Standards - The storm water runoff and management shall be designed for the 25-year post-developed storm to be detained to the 1-year pre-developed storm for this site.
6. A traffic study was previously approved for the full build-out of the overall school campus site improvements. It appears preliminarily that no changes have been made that would affect the results of this traffic study.
7. A professional engineer with a current Ohio registration shall stamp, sign and date the plans for all applicable engineering work including the storm water management calculations.
8. Bonds and fees will be identified when more detailed plan is submitted.
9. The City will perform a complete and thorough review when the complete set of improvement plans and reports are submitted to the City at a future date and the City reserves the right to add to these comments as needed.

If you have any questions, please contact me.

Sincerely,

Nate Wonsick, P.E.
Assistant City Engineer

C: File.



SHAWN KASSON
Fire Marshal

skasson@hudson.oh.us
(330) 342-1869

M E M O R A N D U M

DATE: January 7, 2020
TO: Kris McMaster, City Planner
FROM: Shawn Kasson, Fire Marshal SK
SUBJECT: East Woods and McDowell Elementary Schools

I have reviewed the site plan set (undated but plotted on 12/16/19) for the proposed building addition at East Woods School and site improvements for the East Woods-McDowell campus. Upon review I have no comments regarding the overall site layout, circulation and fire apparatus access to the proposed building addition.

It is my understanding that both East Woods and McDowell Elementary Schools will be furnished with automatic fire sprinkler systems as part of the building renovation projects. Water supply details must be coordinated with HFD and incorporated into the final plans.

The scope of this review is limited due to the preliminary stage of the design process. The applicant must submit detailed plans for review and approval.

Please contact me with any questions.