

**Hines Hill and Valley View Road Sidewalk  
Input Summary - Emails and Forms  
2024**

Ref No.	Street Name	In Favor of	Comments	E or W or Not in Favor	Comments2	Add'l Comments
1	Aurora St				I would like the sidewalks on the North side of Hines Hill Road to have a safe route for my kids to go to the new Middleton Park. I do not want my kids crossing the road in the middle of a busy road or at the bottom of a hill. I would prefer my kids cross the road at an intersection where cars are already stopped. Thank you for considering placing the sidewalks on the north side of Hines Hill Road for our kids safety.	
2	Darien	Yes		East		
3	Darien Dr.	Yes				Extend Valley View sidewalk to Middleton Road
4	E Hines Hill	Yes	Yes! Would love to have access to Middleton Road playground and neighborhood roads to ride bikes/walk dog.	East	East side north of Hines Hill for reasons mentioned above.	Glad to see east side of Valley View is favored to provide easier and safer access to playground and neighborhood.
5	E Hines Hill				Confirm that Hines Hill sidewalk will be on the north side of the street continuing East to West from Glastonbury	<p>Will the asphalt strip between the sidewalk and street continue the same style?</p> <p>After the original sidewalk was installed between 91 and Glastonbury, it was disappointing. There was lots of debris accumulated on the sidewalk. Even after adding the asphalt strip, there continues to be many stones and pebbles on the sidewalk largely coming from the street and perhaps the strip between street and sidewalk, which seems to be already in disrepair.</p> <p>After the sidewalk was installed, we noticed a significant increase in water runoff on our property. Grass no longer grows from our mailbox to driveway. We needed to install nearly 200 feet of additional underground drainage pipes in our back yard to deal with the extra water.</p> <p>Supposedly, homeowners are responsible for maintaining the snow on the sidewalk but is it practical to shovel the snow for what in general is a great length than the driveway? It is difficult enough to clear the apron from the snow resulting from city plows. Snowplow services may not have the equipment to service lengthy sidewalks. Note however that the city overall does a good job keeping Hines Hill clear and salted, especially the downhill approach to 91, where icy conditions frequently result in accidents.</p>
6	E Hines Hill		We are so excited for the sidewalks that are coming to Hines Hill, thank you for all the work you have put in to making this happen.		<p>We think it is not safe having the sidewalks on the south side of Hines Hill and recommend you place them on the north side because of two safety concerns.</p> <p>The first Safety concern is with the Cross Walk at Granby Drive. Granby Drive is on a hill and not a safe spot to be crossing. You can see this visually when driving and the road has 2 yellow lines painted meaning no passing because it is a blind spot. The hill is not large but it is big enough that someone may not see adults and kids crossing in time to stop. I have a hard time seeing when I pass the mail truck which makes me believe drivers would have a hard time seeing young kids crossing on this road.</p> <p>The Hybrid model and South Side model both have pedestrian crossings in the middle of the road. The whole reason we have the connectivity plan for Hudson is to make it easy to get to parks/neighborhood and that would be placing it on the north side of Hines hill because it leads directly to Leighton Estate and Middleton Park. Why make people cross the road multiple times when it is unneeded and not the safest route?</p> <p>Adding 2 pedestrians crosswalks in the middle of Hines Hill will mean drivers have the potential to stop 4 times at crosswalks between 91 and Valley View. This would significantly affect drivers commute as well.</p> <p>Since the City just approved for Middleton Park to become the new Inclusive playground it is going to become the main park of Hudson. People will be more inclined to walk to this park over others and this park is going to bring people in from all over meaning more traffic on Hines Hill &amp; Middleton. Knowing that we are going to be investing this much into the Inclusive Park let's do the sidewalks right the first time and make it safe for all of Hudson to walk there by placing them on the north side. These sidewalks won't affect just those living on Hines Hill but all of Hudson as everyone will be walking/biking to this exciting new park.</p> <p>There is already a portion of the sidewalk on Hines Hill from 91 to Glastonbury- why are we making people cross back and forth on a main street when we could just make it a straight line and more suitable for walking by connecting to the existing sidewalks?</p>	<p>If we think about the future and how the city wants to connect the sidewalks down to the new Summit County Park it would make sense to have them on the north side as well so this would help future sidewalks from making multiple dangerous cross walks as well. It would help the sidewalks be a continuous straight line vs crossing back and forth on a busy road and having driving traffic stop for extra pedestrian crossings. (I do realize the plan currently starts at Prospect but the sidewalk project will continue and eventually connect the 2 since the whole city will want access to the park).</p> <p>The second safety concern is at the 4 way stop sign on Hines Hill &amp; Valley View, people don't pay attention after going through the stop sign and have drove off the road into our neighbors yard multiple times as they drive off the road. This could be very dangerous if someone is walking on the south side of the road.</p> <p>Personally the side walk affects our property. We will lose dozens of trees. We moved to this property for privacy and this will be taking away an incredible amount of our privacy. We can not just replant mature large trees so you will be taking away something that we can not replace.</p> <p>A couple of follow up questions-</p> <ol style="list-style-type: none"> <li>1. Has anyone else shown concern about the safety of these sidewalks and requesting them to be on the North Side?</li> <li>2. Will you be adding any street lights to the street while adding the sidewalks? It can be very dark so street lights would be nice for people to see, especially if asking people to cross in the middle of a busy, high traffic Main Street in town.</li> </ol> <p>We are in favor of the sidewalks and we cannot wait to use them. Our recommendation is putting them on the North side of Hines Hill for the safety of all residents in Hudson.</p> <p>If you are going to recommend the south side of Hines Hill I ask that you please at least walk the road with me to see my safety concerns before making that decision.</p>

**Hines Hill and Valley View Road Sidewalk  
Input Summary - Emails and Forms  
2024**

Ref No.	Street Name	In Favor of	Comments	E or W or Not in Favor	Comments2	Add'l Comments
7	E Hines Hill	No	Point 1: We are against the sidewalk project extending onto Hines Hill Rd. I realize it is the pet project of the council, but the actual residents of Hines Hill do not want a sidewalk. The engineer said there was polling to show that a majority of the Hudson residents were in favor. I am sure that there are many areas of Hudson that want your sidewalk, Hines Hill/Valley is not one of them. As residents of Hudson directly affected by this project, we did not receive any polling asking for our opinion. It appears it was directed at yes voters. According to the engineer, the polling was conducted during the COVID pandemic when a yes vote is more likely as people seek access to the outdoors. Now that things have returned to normal, the sidewalks are not necessary. Even with funds already allocated, it seems to be that there are many better places to divert these funds that benefit ALL Hudson residents. The most glaring examples include the terrible road conditions throughout the town and the lack of a Rec. Center. Even less fortunate districts like Cloverleaf in Medina County have a Rec. Center. Hudson has the land on Hines Hill and elsewhere to build a world class Rec. center that would be available to everyone, but they chose to spend the money on unwanted pet projects. I would be interested in seeing the data showing that the actual residents of Hines Hill/Valley View were predominantly in favor of this project. Also data on when the surveys were sent out, to whom and the number of responses.		Point 2: One of the main factors in choosing to purchase our home in 2008 was the amount of land and the semi rural location, we didn't want to live in town. When we moved in, there were no sidewalks. We have over 10 acres and 400' of frontage. If you put a sidewalk in front of our property, who is liable for any accidents that take place on that side walk? (Not snow related) Who is going to keep it clear of snow? Does the city of Hudson keep the sidewalks in front of all the city parks free of ice and snow within a few hours of snowfall? The properties on Hines Hill have significant frontage. How can you expect home owners to shovel snow 400' of unwanted sidewalk. If you're in love with the sidewalks so much, you set aside funds in the city budget to hold the liability, keep them clear of snow and pay for the maintenance. I've seen work the city has contracted out. I'm not going to take care of something that has been farmed out to the lowest bidder and that falls apart within a few years, when I never wanted it in the first place and had nothing to do with either the selection of the contractor or the enforcement of the quality of the work.	Point 3: If you are going to ignore the wishes of the residents directly affected by an unwanted sidewalk, which I fully expect you will, then put the sidewalk on the preferred side of Hines Hill (South Side) as told to us by the city engineer. For any residents in the subdivision East of Granby Drive/Hines Hill that may be in favor of a sidewalk, then finish the sidewalk you previously started and end at Granby Drive. The maps on your website are confusing in wording (Alternative?) and incomplete as far as ALTERNATIVE 1A and ALTERNATIVE 1B on Hines Hill. Why use of the word alternative when there has been no statement of primary. Why no proposed AlternativeA or B shown for Hines Hill? There are issues with the flood plain on the North side of the road and the huge amounts of water that drain from the full 4 acre lot to our west, and are significant factors in favoring the south side of Hines Hill Rd. During heavy rain, the creek on the North side of the road floods and the drain water from the culvert cannot flow into the creek, thus creating even more flooding in the culvert in front of our house. An expensive 2 month fence/wall project along the length of our property paralleling Hines Hill road and approved by the city will be severely impacted by the new sidewalk if the plans that were on display at the meeting are accurate. For the above reasons we oppose the sidewalk project on Hines Hill Rd west of Granby Drive.
8	E Hines Hill	Yes				
9	E Hines Hill	No	Don't see it being used for the cost and if on the north side of Hines Hill we do not want to maintain it!		Road needs to be fixed first. Line of sight limited. Poor drainage.	
10	E Hines Hill		see separate memo attached.			
11	E Streetsboro				I would like the sidewalks on the north side of Hines Hill to have a safe route for my kids to go to the new Middleton Park when they travel from friends houses. I do not want my kids crossing the road in the middle of a busy road or at the bottom of a hill. I would prefer my kids cross the road at an intersection where cars are already stopped. Thank you for considering placing the sidewalks on the north side of Hines Hill for our kids safety. Personally, we live at 2454 E Streetsboro so we're glad to have the sidewalks close so the kids don't have to cross 303 to get downtown. Please consider the north side of Hines Hill so our kids can be safe no matter where they're traveling in Hudson.	
12	Groton Dr	Yes	Valley View desperately needs a sidewalk! But it should go farther north to meet Middleton Rd. Many residents on both sides of Valley View north of Hines Hill Road. The stretch of Valley View from Hines Hill to Middleton includes 21 residences.		According to Hudson's website, the cost to build sidewalk down Hines Hill is \$1,200,000. The continuation past Hines Hill up to meet Middleton is cheaper! The Connecticut Colony homeowners (95 homes) would like the extension up to Middleton Road.	Delay the walk along Hines Hill and increase length of Valley View north to Middleton! The main entrance to the Connecticut Colony subdivision is in that stretch of Valley View between Hines Hill and Middleton. With the development of Middleton Park as the new H.I.P. - more traffic is expected in both the Connecticut Colony and Leighton Estates subdivisions. This should be considered when planning the sidewalks.
13	Groton Drive	Yes	Connecticut Colony to TOWN!!!	East	East side to meet with new sidewalk on Middleton Rd.	Please show the 95 homes that constitute Connecticut Colony some love!!! Connectivity = ALL neighborhoods!!

**Hines Hill and Valley View Road Sidewalk  
Input Summary - Emails and Forms  
2024**

Ref No.	Street Name	In Favor of	Comments	E or W or Not in Favor	Comments2	Add'l Comments
14	Parkside Drive				We are Hudson residents (address below) with 3 kids in Hudson schools (1 <sup>st</sup> grade, 3 <sup>rd</sup> grade, and 5 <sup>th</sup> grade) and I wanted to write to let you know that we are concerned about the plans to add 2 pedestrian crosswalks in the middle of Hines Hill. One of those potential crosswalks is not in a safe spot to cross because it's at the bottom of a hill, so cars would have very little time before they would even see people in the crosswalk. Safety for Hudson kids is our biggest priority, and we want to make sure that road doesn't end up being a dangerous spot for kids to cross (kids may easily assume that crossing the road at a crosswalk means they are safe, but that is a busy road and especially with the hill, it could be very dangerous for kids to be crossing there). We would like the sidewalks to be on the north side of Hines Hill, so that there are less pedestrian crosswalks in the middle of a busy road. We think it's best to have the crosswalks placed at safe points where traffic is already stopping at the existing stop signs. This would be far better than planning to put crosswalks in the middle of a busy road.	
15	Stonington	es/No/Neutral	If you do a 5-ft sidewalk that kids can't ride bikes on - don't bother. Lay a golf cart path like you already have	Neutral		
16	Timber Avenue				I am writing in regards to the proposed sidewalks on Hines Hill Road. I believe for the safety of our children they should be placed on the north side. The proposed pedestrian crossing is in a blind spot and not safe. Also with the new playground going in north of the road it would prevent children from crossing the street multiple times. Thank you for taking this in consideration.	
17	Timber Avenue				I am writing in regards to the project extending sidewalks on E. Hines Hill Road. I am concerned about the sidewalk crossing E. Hines Hill and consequently having our children cross in front of the traffic on the street. I use Hines Hill frequently to visit my grandchildren that live there and can attest that with the hills and valleys on that road, it is not always easy to see over the crest of the hills as you are driving. I would highly recommend that the sidewalks be kept on the north side of E. Hines Hill to avoid having our children cross in front of traffic and keep them out of harms way.	
18	Valley View	Yes	Think the sidewalk will be a nice connection for the community and a way to increase activity level	East	Concerned about remaining ditch area after sidewalk installation. Current ditch is very large and the maintenanc in the summer is taxing. Am only in favor of sidewalk if that is addressed and ditch is mowable with riding mower.	Concerned about losing part of flower bed near driveway and placement of address pole. Concerned about liability of sidewalk maintenance (mainly snow/ice removal in winter) and potential liability from falls. Would lke to see uch more use of retaining walls or barrier for front yards.
19	Valley View	Neutral		West	I am concerned with litter and strangers waking through my yard. We live on the east side so I would prefer the sidewalk on the west side. My small child mainly plays in the front yard and the idea of strangers being right there is upsetting.	The houses on the west side sit further back than the east side so it would be less of a disturbance to them. I am very concerned about losing my address pole and flower bed and also the liability of someone falling on the sidewalk in winter.
20	Valley View	Yes		East		Storm drains under sidewalk 5' wide not a shared use path. Bicycles to use street. Since we are managing run off better lets run off NEORS!
21	Valley View	No	1.) I would lose a tree 2.) Like the semi-ruralness. 3.) Don't want to shovel/d-ice/liability/Don't want easy access for solicitors	Not in Favor	See reasons already mentioned.	
22	Valley View	Yes		East		In favor of East Side. 1.) Hudson core main sewer had to be dug up 2 times in last 2 years at this home. 2.) Catalpa tree at my home is a significant tree per City Arborist. A lot of money was spent to keep it safe when forcemains were installed. 3.) Its safer on East side for kids. 4.) Sanitary sewer alignment on 7664 Valley View is in error (passes between pavement and catalpa tree) 5.) There is a CB at my driveway which isn't shown on drawing. 6.) I would like to have an opportunity to review plans for work on my property if west option is chosen. I have 40 years design and construction engineering experience. Was registered PE for 40 years.
23	Valley View	Yes	East side of road benefits more homeowners	East	It would be nice if this project could also include a fix of drainage ditch problem at the same time. (ie put the drainage underground.) Currently does not flow and floods into yard during heavy rain. Always wet.	This project is truly needed. Huge safety improvement for walkers on Valley View.

**Hines Hill and Valley View Road Sidewalk  
Input Summary - Emails and Forms  
2024**

Ref No.	Street Name	In Favor of	Comments	E or W or Not in Favor	Comments2	Add'l Comments
24	Valley View	Yes	We are thrilled with the sidewalks, trails, & connectivity			Please reduce the speed from 45 to 35 mps on Valley view Road. We are very excited about the new path, but it is dangerous to cross the street
25	Valley View	Yes				
26	Valley View	Yes	Have enjoyed the walking path so far.		Pink/South-West Side (this is our property)	Speed limit 35 is essential for safety. Have had several close calls checking mailbox. I believe speed limit was 35 previously?
27	Valley View	Yes	We are so happy about getting a sidewalk!		We live on the west (pink) side and would love the sidewalk to be on our side.	We feel very strongly that the speed limit should be lowered to 35 mps. A slower speed is essential for the safety of pedestrians, bikers, and drivers alike!
28	Valley View	Yes	We are so happy that they City is helping with connectivity! Thank you!		We want it on our side (pink) 1A!!	Please bring the speed limit down to 35. Accidents, buses, no street lights, kids crossing street, hitting deer. SAFETY. All streets leading to Valley View are 35!
29	Valley View	Yes	This is a much needed project. You literally take your life in your hands if you walk or ride your bike on Valley View Rd.		We prefer the sidewalk where it is proposed on the south side of Valley View	This a a very good project for the residents of Valley View & Hines Hill.
30	Valley View	Yes	Love it! But concerned about the 45 mph. We believe the speed limit should be lowered for obvious safety reasons.		It will be perfectly positioned to connect with the newly constructed path from Hunting Hollow to 91.	Please consider lowering the speed limit before major accidents occur!!
31	Valley View	No	It would be a high-cost sidewalk to nowhere given the distance to downtown, parks, and schools. For better use of tax dollars to lower Valley View speed limit and add bike lanes rather than a sidewalk.		Location 1A on the south side of Valley View is beset. Absolutely opposed to 1B.	1) Very concerned about safety of the new multi-purpose trail and the proposed sidewalk given the limited separation from a 45mph road.  2) Concerned about additional runoff from all this new concrete into Brandywine Creek and potential to increase flooding.
32	Valley View	Neutral			I think the southwest side of Valley View Road is the better option	I hope bicycles are allowed on the sidewalk.
33	Valley View	Yes	Love the idea of being able to walk with kids to downtown without being on 45 mph road.		The recommended location seems to make the most sense, will meet up with recent sidewalk past Hunting Hollow. Plus, we would love the sidewalk on our side of the street.	
34	Westpont Drive				I would like the sidewalks on the north side of Hines Hill to have a safe route for my kids to go to the new Middleton Park when they travel from friends houses. I do not want my kids crossing the road in the middle of a busy road or at the bottom of a hill. I would prefer my kids cross the road at an intersection where cars are already stopped. Thank you for considering placing the sidewalks on the north side of Hines Hill for our kids safety.	
35	Valley View		See email attached	West		

The following questions are derived from multiple emails and statements from members of the city council and employees.

**1. You stated you wanted to connect 40 homes in Hunting Hollow to Middleton Park through Leighton Estates.**

- \* Hunting Hollow has no sidewalks.
- \* Leighton Estates has no sidewalks.
- \* Connecticut Colonies and Chards Ford have no sidewalks.
- \* Continue past HH and use Wethersfield Drive go go through that subdivision to get to the park.
- \* This is not the 1950's. No parent in Hunting Hollow is going to let their kids walk or ride bikes all the way to Middleton Park.

**2. You state that decisions are not based on any particular resident as demographics change with time.**

Yet, you were swayed by a flawed safety narrative by a resident on the South side of Hines Hill that are in favor of the sidewalk, but only if it's on the North side.

You went against the survey recommendation placing the sidewalk on the South side.

- \* How will any of the residents living on the South side of HH get to Middleton Park?

Will they walk down to VV or 91 to cross? No, they cannot do that, there is no sidewalk on the South side.

They will just cross HH in front of their homes like they do now, because there is no crossing.

- \* If you are then going to put in a crossing, you may as well put sidewalk on South side to begin with.

**3. You state crosswalks are "typically" placed at an intersection. In the interest of safety, you could put a crosswalk between John Brown Place and**

**Glastonbury Drive to connect perfectly with the existing sidewalk. Saving \$400,000+**

**4. Why are you funneling everyone on Hines Hill through Leighton Estates to get to Middleton Park?**

- \* There are no sidewalks in Leighton Estates to walk on to get to the park.
- \* Leighton Estates is a cut through to Middleton Road when traffic backs up at HH and 91.
- \* As stated by Michael Bird, "Crossings on 35mph roads are dangerous." So why did you put 3 of them on Middleton Road but so reluctant to put just 1 on Hines Hill. You can't have it both ways.

**5. How do residents of Chads Ford get to Middleton Park?**

- \* The crossing at Middleton Park on Middleton Rd is not at an intersection.

**6. Every resident of Leighton Estates, Hunting Hollow and Connecticut Colony already have access to downtown Hudson without additional sidewalks on Hines Hill Rd**

**7. Why are you burdening single family home owners on Hines Hill with unwanted sidewalks for the convenience of subdivision home owners who don't have sidewalks.**

- \* Why did the City of Hudson approve subdivisions without sidewalks if connectivity is so important?
- \* There is no "connectivity" within the city approved subdivisions.

**8. The "Rural Landscape" of our property is equally, if not more impacted, than the John Brown House if the sidewalk were located on the North side.**

- \* The owner of 1842 HH and the HHA did not seem to think that an oil and gas well affects the rural landscape of the property.
- \* We bought this house as it was a rural property, specifically to be outside of town.

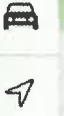
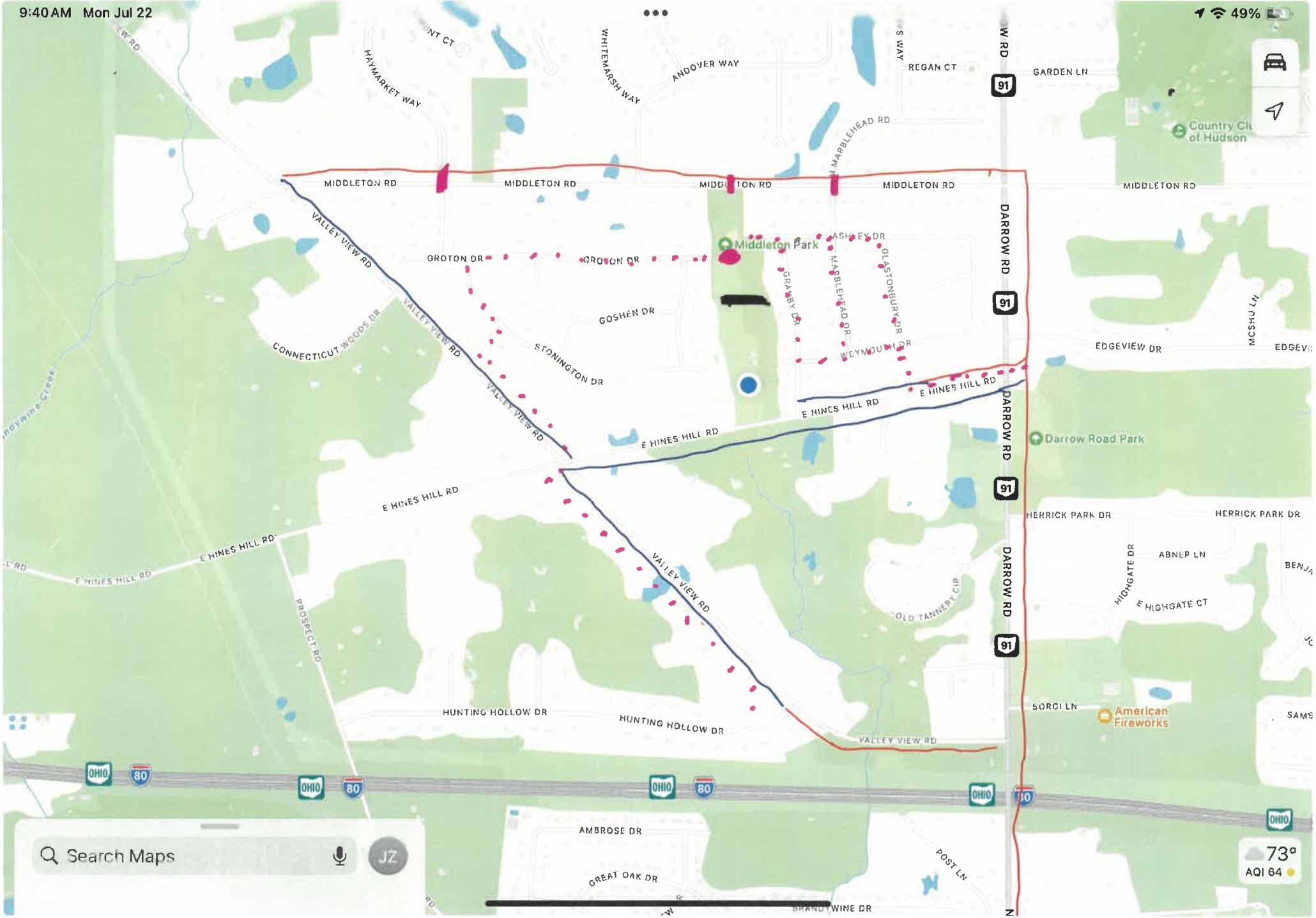
## **9. The effects of increased traffic in Middleton Park on the residents of Hines Hill.**

- \* We have constant trespassing from park users into our property
- \* **NO Trespassing** signs are vandalized or removed as soon as they are put up.
- \* Increased crime as 5 burglars parked in Middleton Park lot and walked through the park to our property and broke into our home. That is a verifiable safety issue.

If it is **safer**, cheaper, less environmental impact and actually wanted by residents of the South side of Hines Hill Rd, then why don't you follow the very expensive recommendation and put the sidewalk on the South side.

Better yet, cancel the unwanted sidewalks on Hines Hill completely and reallocate the money towards a Rec Center that everyone in Hudson can enjoy all year round, especially in winter. Use the old Youth Development Center on Hines Hill to build the Rec Center, you have the land. That is a project that is desperately needed and would bring way more support than any sidewalks.





Search Maps



JZ

73°  
AQI 64



**Sent:** Monday, August 19, 2024 9:26 PM  
**To:** Bradley Kosco  
**Cc:** Chris Banweg; Engineering Email; City Manager  
**Subject:** Valley View Sidewalk Plan

**CAUTION:** This email originated from outside the organization. Do not click links or open attachments unless you recognize the sender and know the content is safe.

Brad,

It was great speaking with you last week regarding the future plans for the Valley View Sidewalk Extension. I really appreciate you taking the time to hear my thoughts and concerns. I think we live in one of the gems of NE Ohio, and maybe all of the Midwest so I appreciate all that you, the city council and the city managers do for our community.

During our conversation, I expressed my reservations about the Valley View sidewalk plan as well as some thoughts. I wanted to outline them in this email so they can be considered in a more formal way.

1. From a personal standpoint, when I look at the drawings, it appears that if you put the sidewalk on the East side of Valley View, you could be cutting a good distance into my property. I understand that the “construction lines” are a worst case scenario but what if that worst case scenario is realized? The sidewalk would be cutting in past our fence and our house already sits very close to the road.

The reason it sits so close to the road is because it's a historic home (est. 1849) that was later turned into a stagecoach stop as an inn and tavern because it was so close to the road. People traveling from Pittsburgh to Cleveland would stop off there for food and shelter, again because of its proximity to the road. It would severely limit our front yard if this sidewalk went in and had to go past our fence. I can't even imagine our yard being shaved off by that much. It would be horrible from a privacy and an aesthetic standpoint.

2. But it's not just my house. If you look at the number of homes that sit closer to the road on the East side of Valley View, it far outweighs the number of homes sitting that close on the West Side of the road. From Hines Hill to Middleton, you have about 10 homes where the sidewalk would be close to the front porch on the East Side, whereas, you have 3-4 on the West Side. The majority of homes on the West Side are set further back and it would not be a major disruption if a sidewalk was put in on that side.

3. Connectivity. We discussed the access to downtown from those residents in Connecticut Colony. But, it is a 2.5 mile walk. A walk downtown from that neighborhood would take over 50 mins, each way. I can't see very many people utilizing this sidewalk to walk all the way downtown on any kind of regular basis. But this brings me to my next point...
  
4. Those residents coming from that neighborhood are going to have to cross Valley View at some point because the sidewalk was already installed on the West Side coming from Darrow rd. So, would you rather cross Valley View down at that bend as cars are picking up speed coming around that corner as they approach Hunting Hollow? Or, just a simple cross walk at Wethersfield , where you can clearly see (and be seen) as you are crossing Valley View?

I might be mistaken but it seems to me that many people on Hines Hill are against a sidewalk on that road as well. I feel that many decide to move to the Hines Hill/Valley View area for more of a "country" feel. This is one of the unique aspects of Hudson and this is one of the last areas to have that type of dynamic.

5. Lastly, Cost. Plain and simple. The cost figures indicate that it is going to cost \$100,000 more to put the sidewalk on the East Side. I can't understand why the city would go forward with that plan? Surely, there are better ways to spend \$100,000.

To summarize, I don't believe the sidewalk is necessary but if we are going to go forward with a Valley View Sidewalk, why wouldn't we install it in a way that is intrusive to less properties, is safer for people crossing and one that saves the city \$100,000? I greatly appreciate you considering these points and please feel free to reach out with any response or comments. Thank you.

Valley View rd