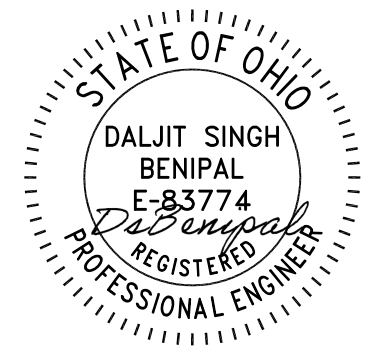


# BREW KETTLE

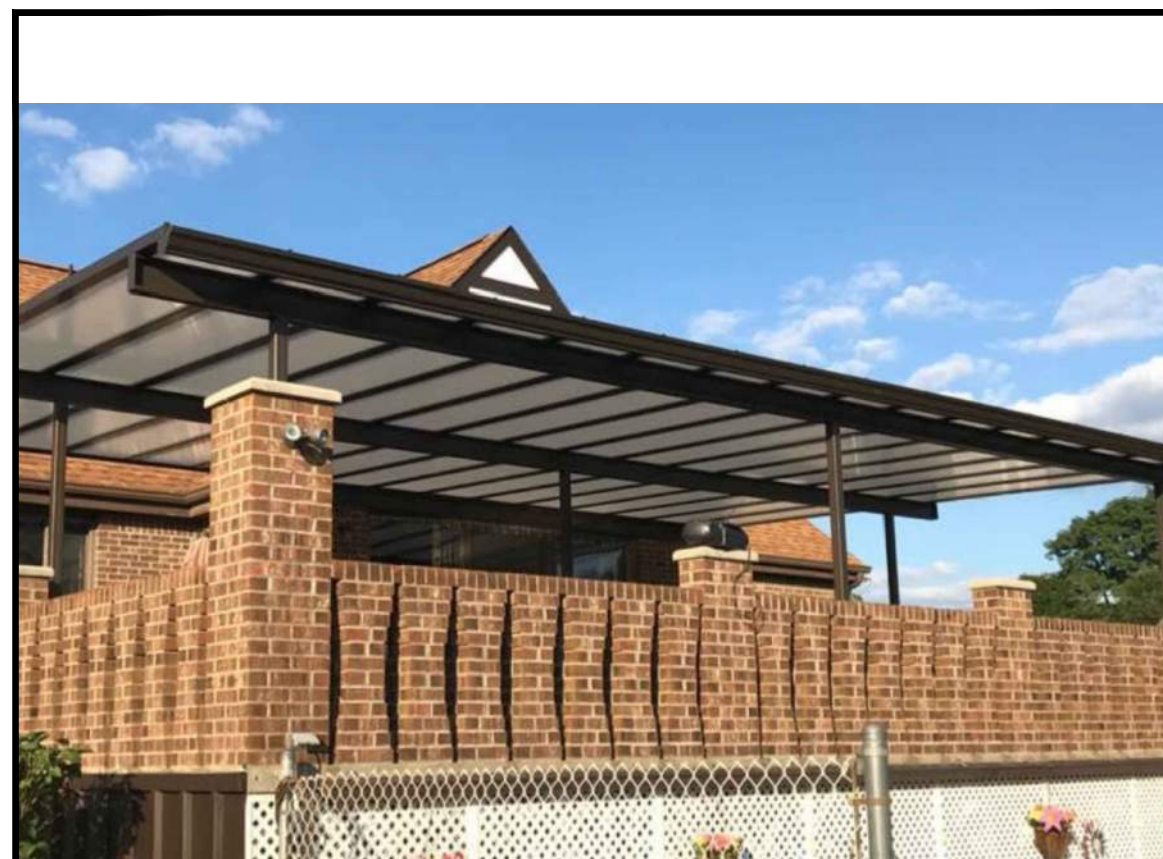
## 11 ATTERBURY BLVD.

## HUDSON, OH 44236

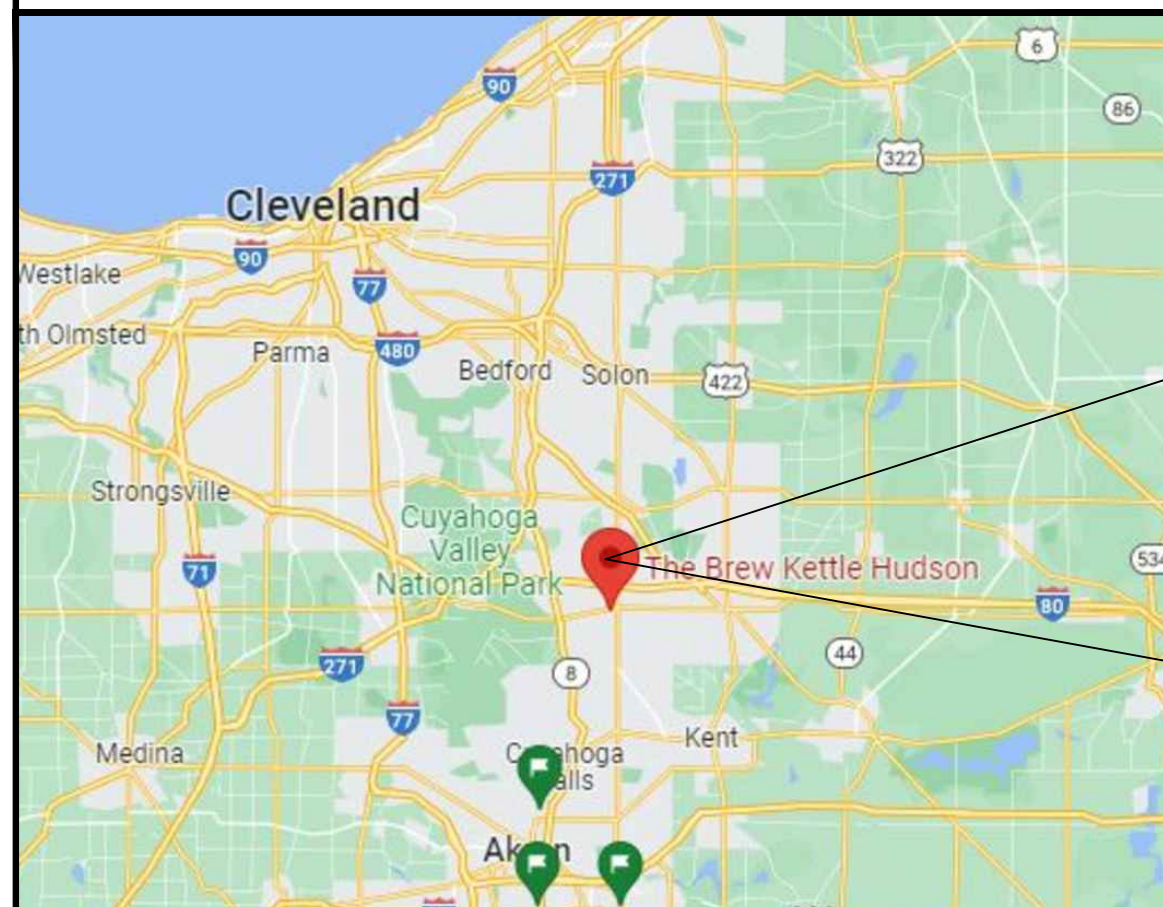


3453 West 140th Street  
Cleveland, OH 44111  
PH (855)412-7444  
Email: info@brightcovers.com

This drawing and the information it contains are the property of Translucent LLC dba Bright Covers. It is not to be copied or traced, nor is its contents to be misused in any way.



EXAMPLE ONLY



VICINITY MAP

PREPARED BY:  
**Translucent LLC dba  
BrightCovers**

[www.brightcovers.com](http://www.brightcovers.com)



PROPOSED LOCATION

### DRAWING INDEX

SHEET #	SHEET TITLE
1	COVER SHEET & DRAWING INDEX
2	SITE PLAN
3	CONSTRUCTION PLAN
4A	ELEVATION PLANS
4B	SECTION PLANS
5	TYPICAL DETAILS
6	SPECIFICATIONS
7	SNOW LOAD TABLES

### ABBREVIATIONS

(E)	EXISTING	A.G.	ABOVE GRADE
TYP	TYPICAL	B.G.	BELOW GRADE
O.C.	OFF CENTER		
DS	DOWNSPOUT		
CP	CUSTOM PANEL		

### REVISIONS

NO.	DESCRIPTION	DATE
0	ISSUED FOR PERMIT	07/18/2023

### BRIGHTCOVERS ADDITION



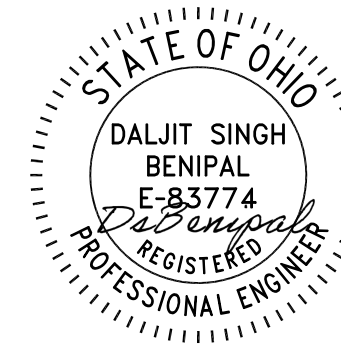
11 ATTERBURY BLVD.  
HUDSON, OH 44236

### COVER SHEET

Dwn: SL Scale: AS NOTED

Dwg No. Rev.  
1 0





3453 West 140th Street  
Cleveland, OH 44111  
PH (855)412-7444  
Email: info@brightcovers.com

This drawing and the information it contains are the property of Translucent LLC dba Bright Covers. It is not to be copied or traced, nor is its contents to be misused in any way.

### REVISIONS

NO.	DESCRIPTION	DATE
0	ISSUED FOR PERMIT	07/18/2023

### BRIGHTCOVERS ADDITION

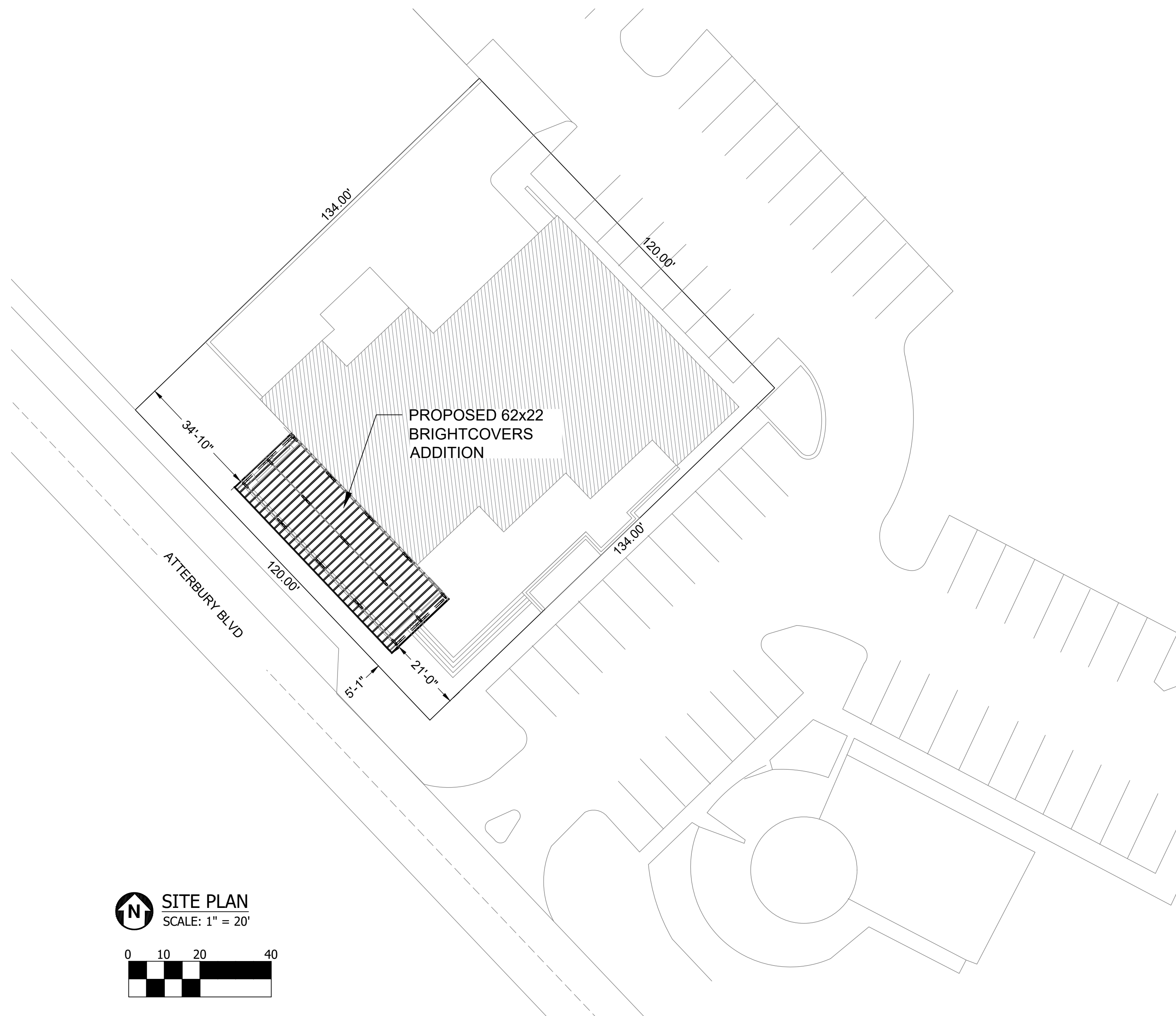


11 ATTERBURY BLVD.  
HUDSON, OH 44236

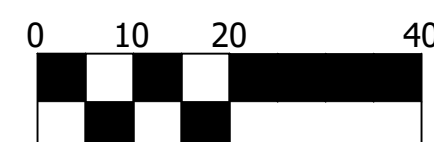
### SITE PLAN

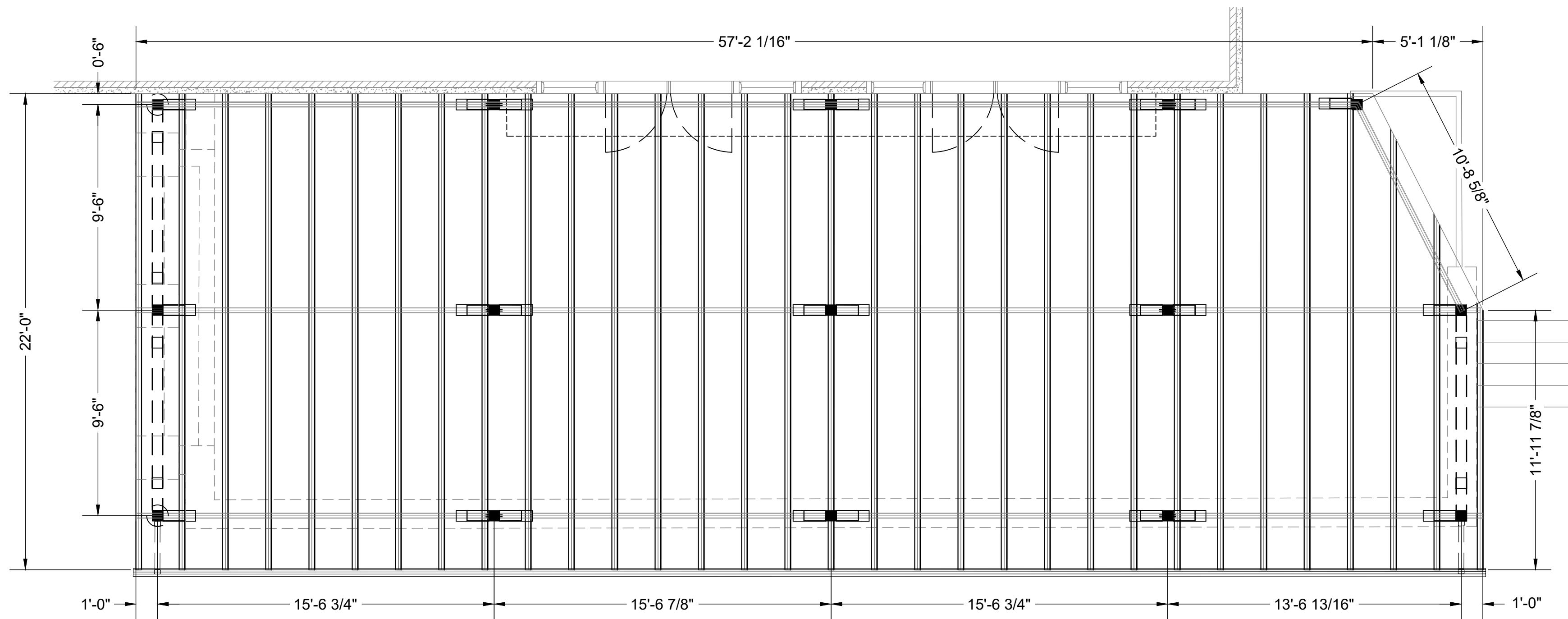
Dwn: SL      Scale: AS NOTED

Dwg No.	Rev.
2	0

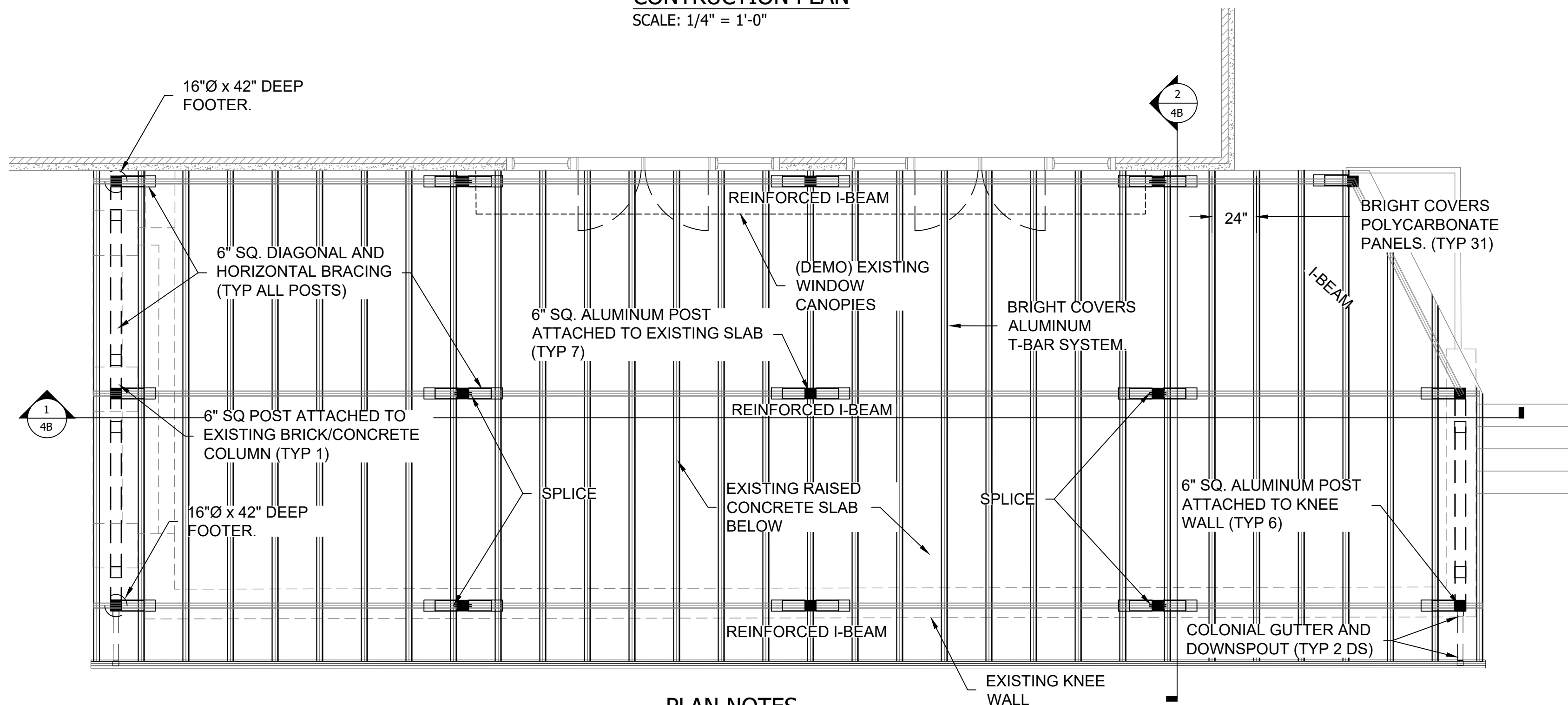


SITE PLAN  
SCALE: 1" = 20'



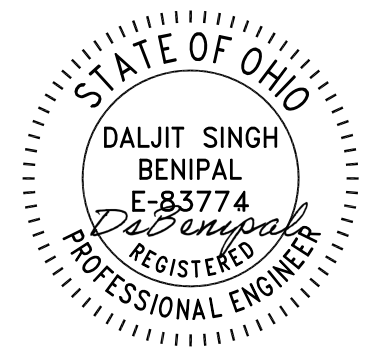


**CONSTRUCTION PLAN**  
SCALE: 1/4" = 1'-0"



**PLAN NOTES**  
SCALE: 1/4" = 1'-0"

NOTE:  
1. SEE SHEET 4B FOR ALL GENERAL NOTES.  
2. SEE SHEET 5 FOR DETAILS.



3453 West 140th Street  
Cleveland, OH 44111  
PH (855)412-7444  
Email: info@brightcovers.com

This drawing and the information it contains are the property of Translucent LLC dba Bright Covers. It is not to be copied or traced, nor is its contents to be misused in any way.

#### REVISIONS

NO.	DESCRIPTION	DATE
0	ISSUED FOR PERMIT	07/18/2023

#### BRIGHTCOVERS ADDITION



11 ATTERBURY BLVD.  
HUDSON, OH 44236

#### CONSTRUCTION PLAN

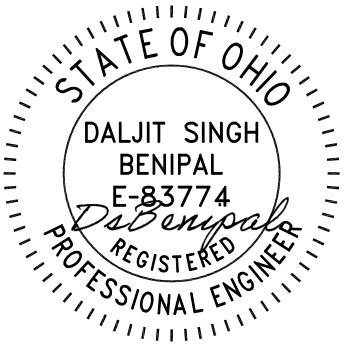
Dwn: SL Scale: AS NOTED

Dwg No. Rev.

3

0





3453 West 140th Street  
Cleveland, OH 44111  
PH (855)412-7444  
Email: info@brightcovers.com

This drawing and the information it contains are the property of Translucent LLC dba Bright Covers. It is not to be copied or traced, nor is its contents to be misused in any way.

REVISIONS

NO.	DESCRIPTION	DATE
0	ISSUED FOR PERMIT	07/18/2023

BRIGHTCOVERS ADDITION



11 ATTERBURY BLVD.  
HUDSON, OH 44236

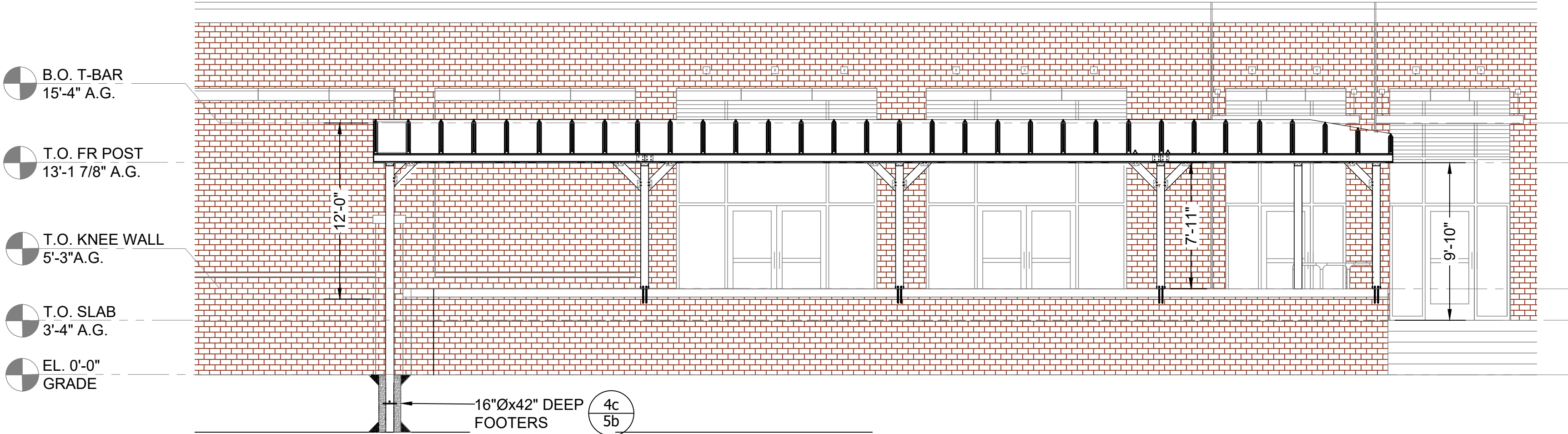
ELEVATION PLANS

Dwn: SL Scale: AS NOTED

Dwg No. Rev.

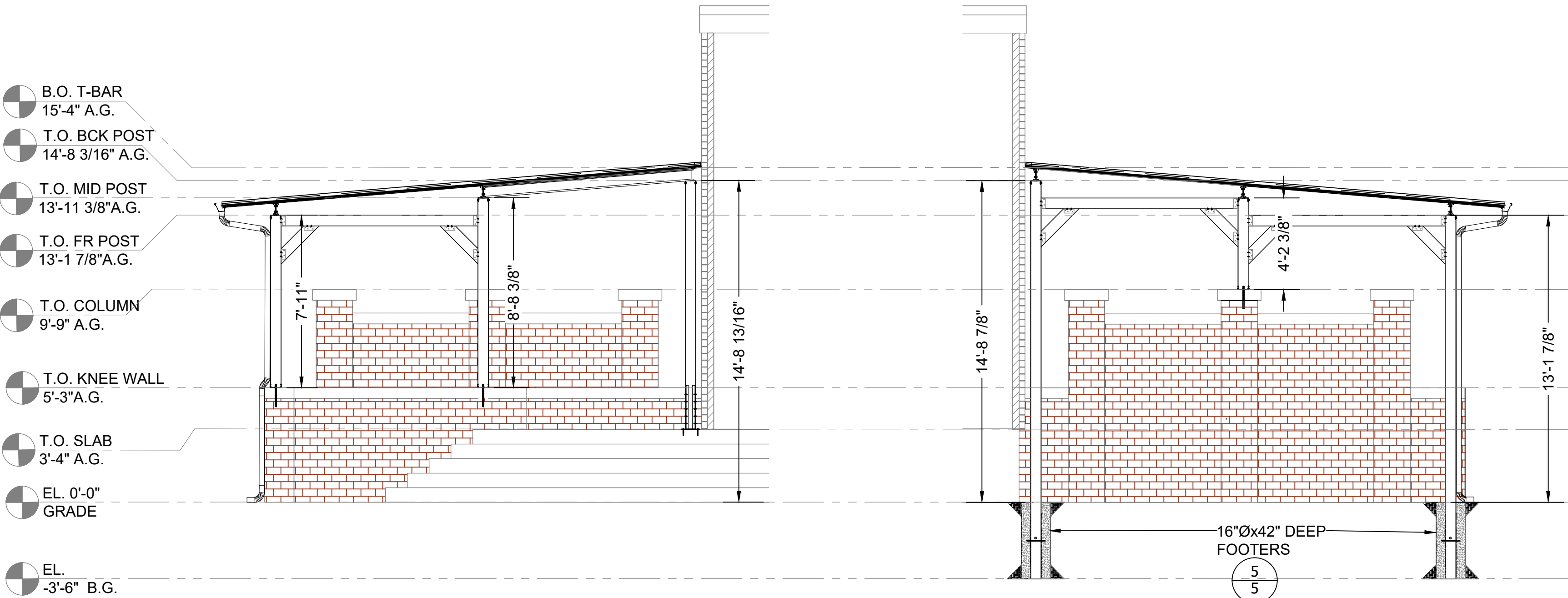
4A

0



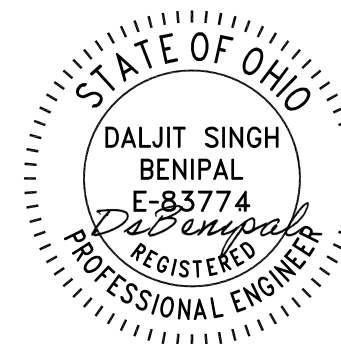
FRONT ELEVATION VIEW

NOTE:  
SCALE: 3/16" = 1'-0"  
1. GUTTER AND DOWNSPOUTS NOT SHOWN ON THIS VIEW FOR CLARITY PURPOSES.  
2. SEE SHEET 4B FOR ALL GENERAL NOTES.  
3. SEE SHEET 5 FOR DETAILS.



EAST ELEVATION VIEW  
SCALE: 1/4" = 1'-0"

WEST ELEVATION VIEW  
SCALE: 1/4" = 1'-0"



3453 West 140th Street  
Cleveland, OH 44111  
PH (855)412-7444  
Email: info@brightcovers.com

This drawing and the information it contains are the property of Translucent LLC dba Bright Covers. It is not to be copied or traced, nor is its contents to be misused in any way.

#### REVISIONS

NO.	DESCRIPTION	DATE
0	ISSUED FOR PERMIT	07/18/2023

#### BRIGHTCOVERS ADDITION



11 ATTERBURY BLVD.  
HUDSON, OH 44236

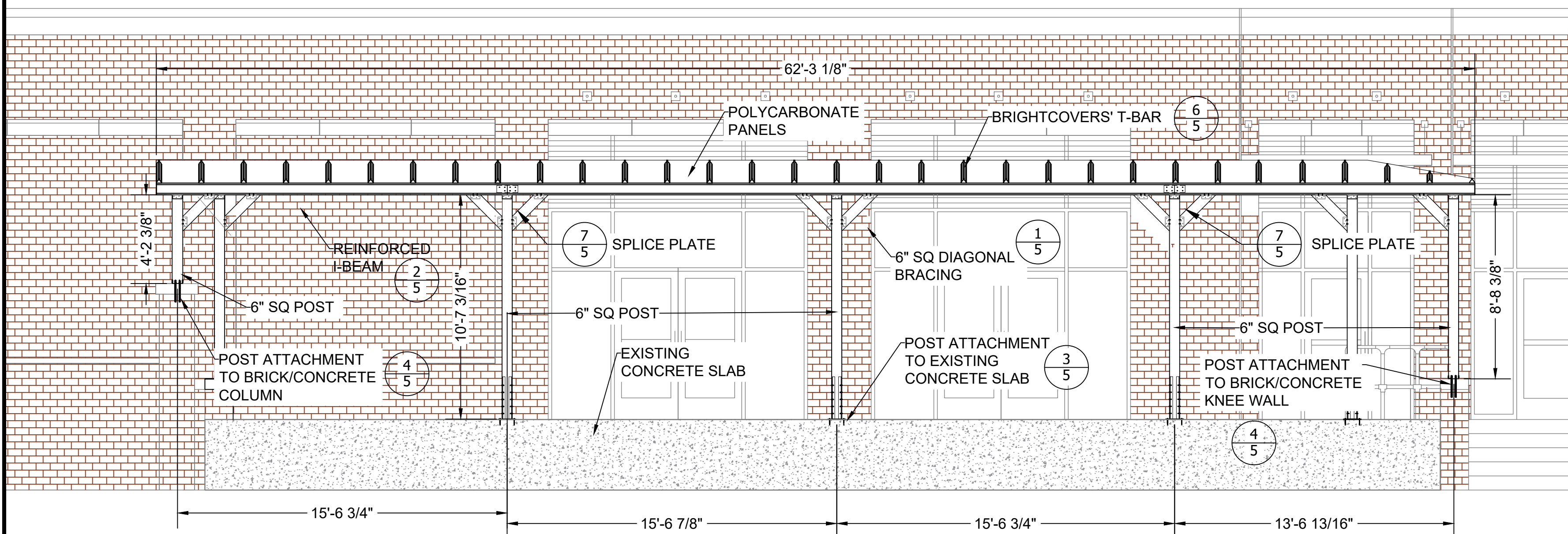
#### SECTION PLANS

Dwn: SL Scale: AS NOTED

Dwg No. Rev.

4B

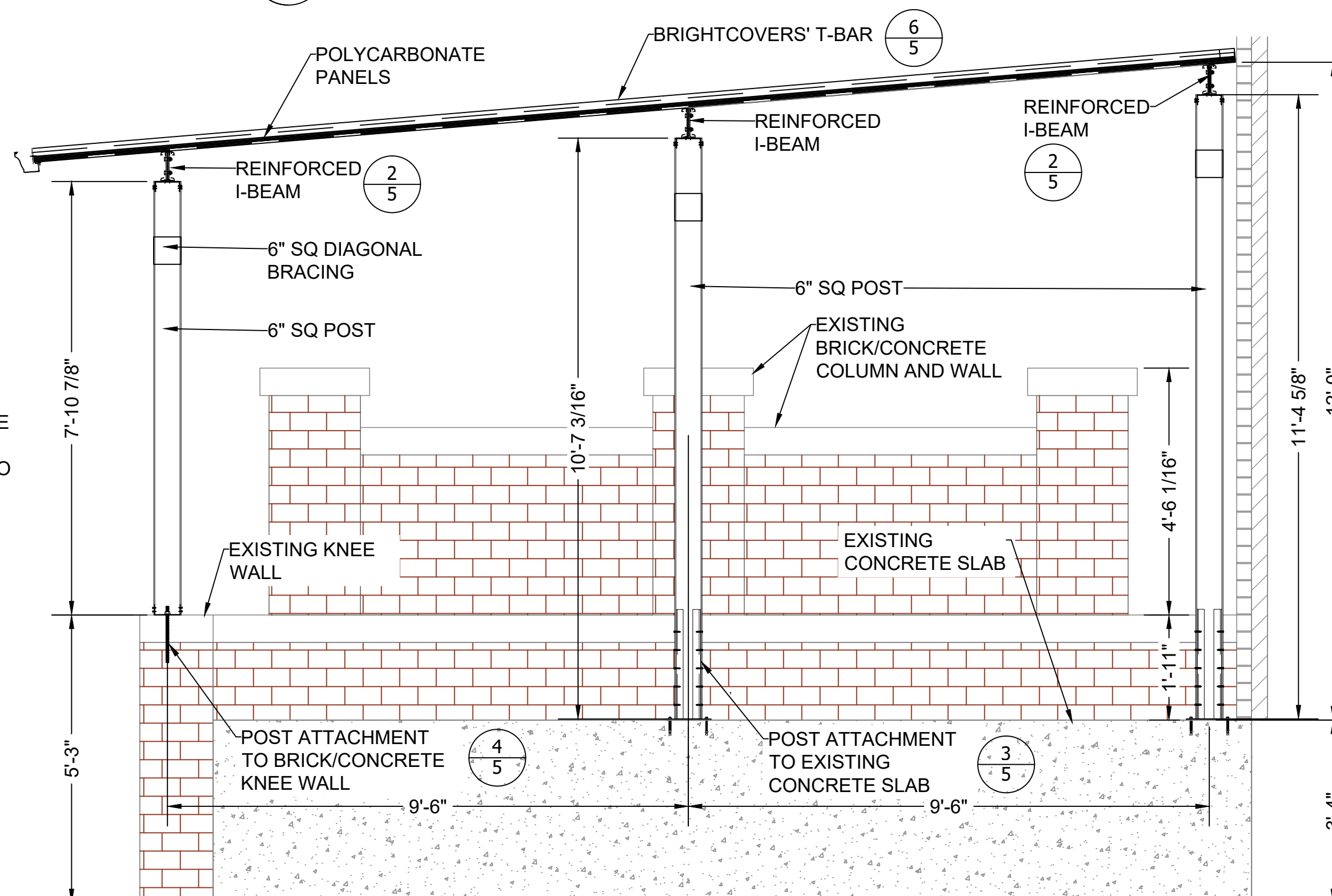
0



1 SECTION VIEW  
4B SCALE: 1/4" = 1'-0"

#### GENERAL NOTES

- EXISTING WINDOW CANOPIES AT FRONT OF BUILDING TO BE REMOVED BY OWNER PRIOR TO INSTALLATION.
- COVER SHALL HAVE A BLACK ALUMINUM FRAME WITH GREY POLYCARBONATE PANELS TO MATCH EXISTING ARCHITECTURE.
- COVER WILL BE FREE STANDING WITH 6" SQ DIAGONAL AND HORIZONTAL BRACING AT EACH POST.
- COVER WILL HAVE (15) 6" SQ ALUMINUM POSTS. (5) POSTS SHALL BE ATTACHED TO EXISTING BRICK/CONCRETE KNEE WALL, (7) POSTS SHALL BE ATTACHED TO EXISTING CONCRETE SLAB, (2) POSTS SHALL BE ATTACHED TO 16"x42" DEEP FOOTERS AND (1) POST SHALL BE ATTACHED TO MIDDLE BRICK/CONCRETE COLUMN ON WEST SIDE OF COVER.
- COVER SHALL BE CUSTOM CUT DIAGONALLY AT ENTRANCE TO PATIO ON EAST END. ALL CUSTOM PANELS TO BE FIELD VERIFIED AND CUT ON LOCATION.
- COVER SHALL HAVE A 4" COMMERCIAL GUTTER AND (2) DOWNSPOUTS AND SHALL DRAIN OUTSIDE OF BRICK KNEE WALL TO GRADE.



2 SECTION VIEW  
4B SCALE: 1/2" = 1'-0"





3453 West 140th Street  
Cleveland, OH 44111  
PH (855)412-7444  
Email: info@brightcovers.com

This drawing and the information it contains are the property of Translucent LLC dba Bright Covers. It is not to be copied or traced, nor is its contents to be misused in any way.

REVISIONS

NO.	DESCRIPTION	DATE
0	ISSUED FOR PERMIT	07/18/2023

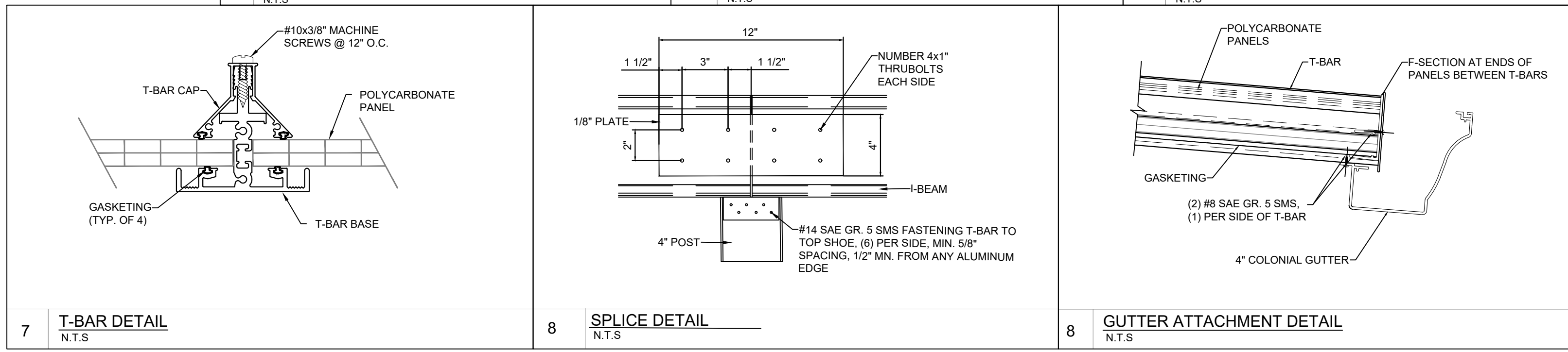
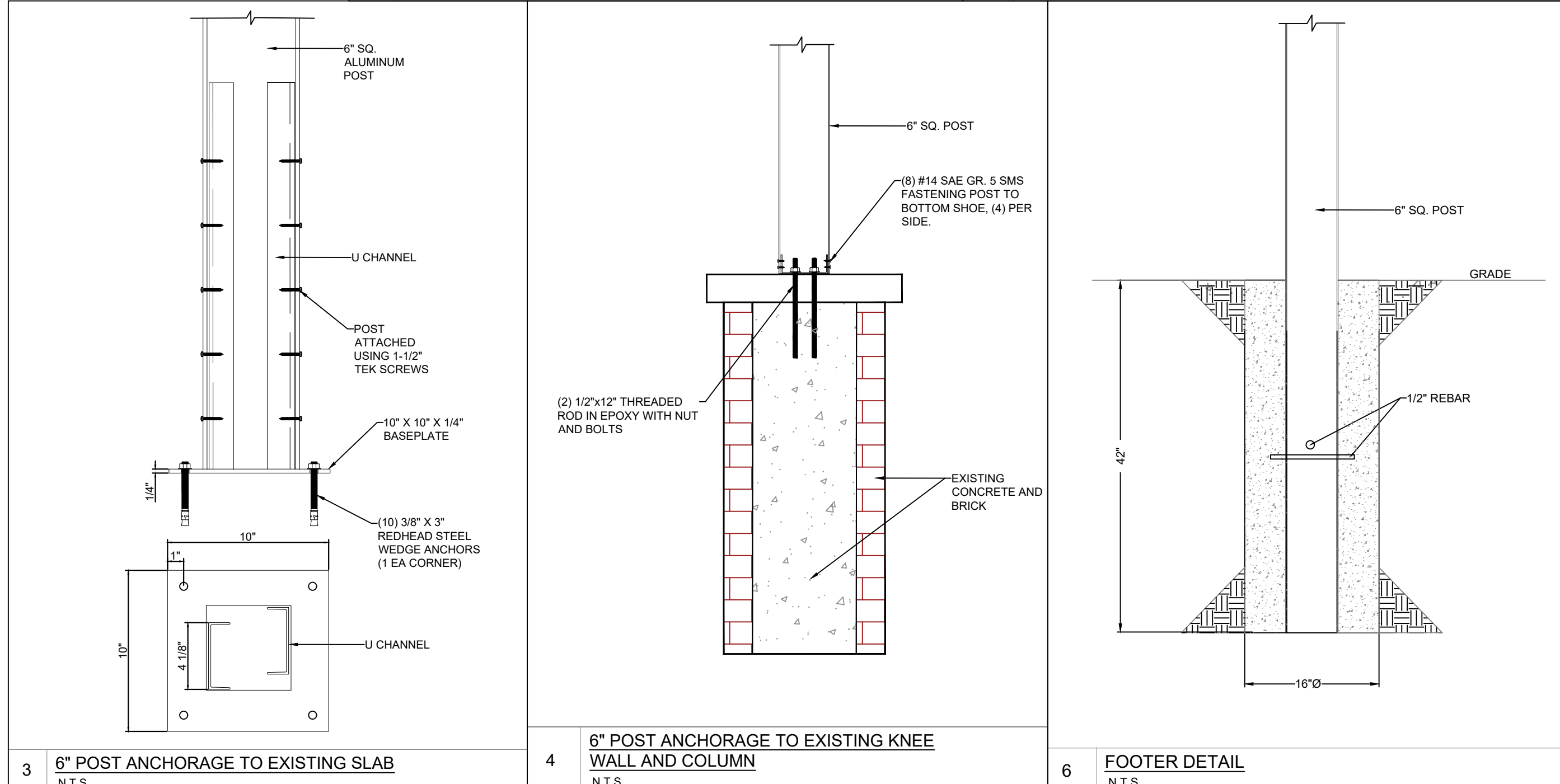
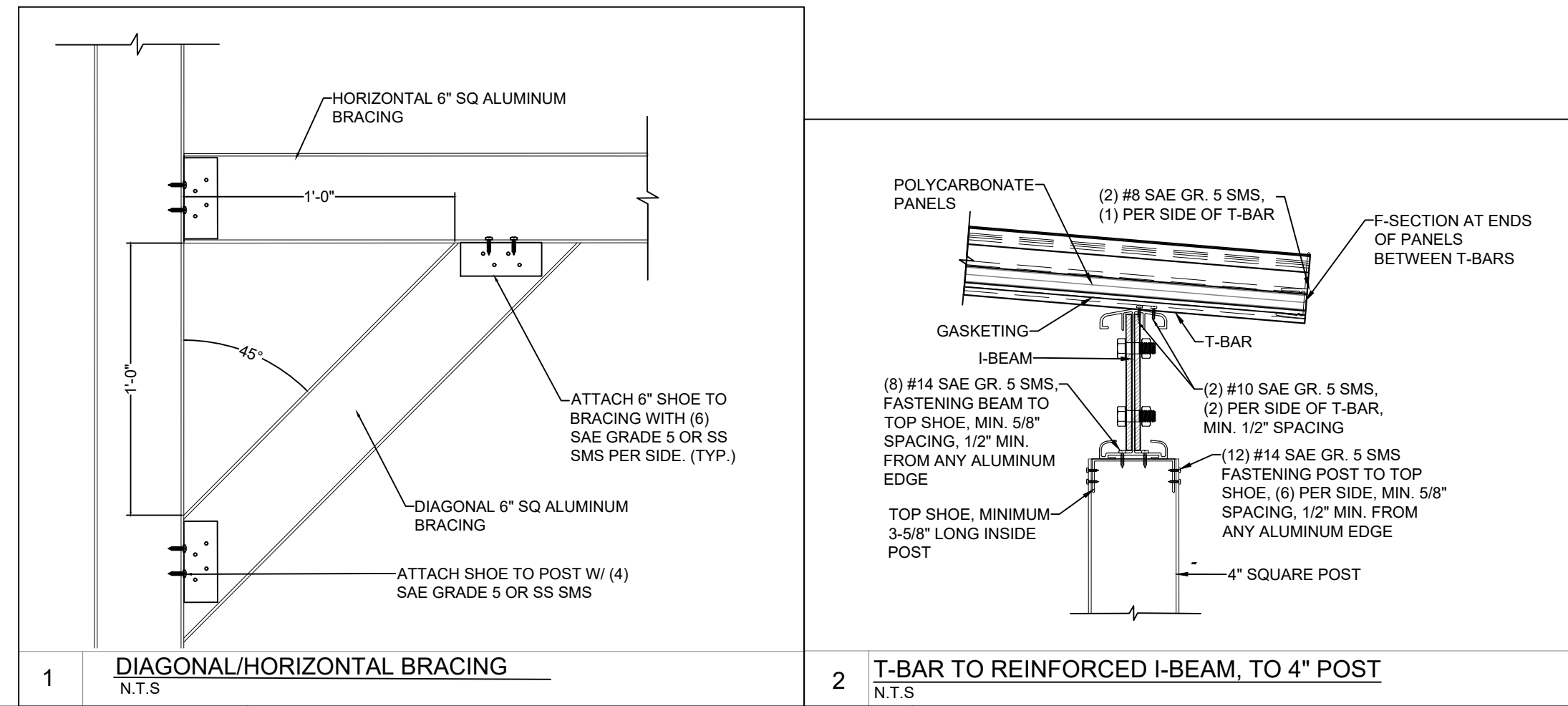
BRIGHTCOVERS ADDITION



11 ATTERBURY BLVD.  
HUDSON, OH 44236

TYPICAL DETAILS

Dwn: SL	Scale: AS NOTED
Dwg No. 5	Rev. 0





Lexan\* International Building Code (IBC) Compliance

LEXAN\* Thermoclear and Corrugated Sheet products meet the International Code Council (ICC) requirements for light transmitting plastics as outlined in chapter 26 of the IBC. These requirements include standards for self-ignition, burn rate, smoke density, flame spread and smoke development.

The IBC limits the use of approved plastic materials. Limitations include the size of each panel, distance between panels, as well as building type, height, and location. Consult the prevailing code to ensure compliance.

Self-Ignition Temperature (ASTM D 1929)

Plastic material must have a self-ignition temperature of 650 F or greater. LEXAN\* Thermoclear and Corrugated Sheet have a self-ignition temperature of about 1000 F.

Horizontal Burn Rate (ASTM D 635)

Plastic material that have a burning extent of 1 inch or less have a CC1 classification. Plastic materials that have a burning rate of 2.5 inches per minute or less have a CC2 classification. LEXAN\* Thermoclear and Corrugated sheet have a CC1 classification since they self extinguish between 0.4 and 1 inch.

Smoke Density (ASTM D 2843)

Plastic material must have a smoke density rating no greater than 75 where tested in the thickness intended for use. LEXAN\* Thermoclear, Thermoclick, and Corrugated sheet typically generate a smoke density value between 40-73.

Flame Spread and Smoke Development (ASTM E84)

In order to obtain the Flame Spread Classification, results must fall into a range between 0 and 25 to be Class A, 26-75 for Class B, and 76-200 for Class C. In all cases, Smoke Development must be less than 450. Lexan\* Thermoclear, Thermoclick, and Corrugated sheet products have a class A classification.

<small>* Registered trademark(s) of SABIC Innovative Plastics BV 1 Plastics Avenue Pittsfield, MA 01201 USA T-413-448-7702 mike.laurin@sabic-ip.com www.sabic-ip.com</small>	<small>ANY SALE OF PRODUCTS OR DELIVERY OF CUSTOMER SUPPORT AND ADVICE BY SABIC INNOVA-TIVE PLASTICSHOLDING BV, ITS SUBSIDIAR- IES AND AFFILIATES ("SELLER"), IS MADE EXCLU-SIVELY UNDER SELLER'S STANDARD CONDITIONS OF SALE which can be located at http:// www.sabic-ip.com. SELLER MAKES NO WARRANTY, EXPRESS OR IMPLIED, WITH RESPECT TO THE PERFOR-MANCE, SUITABILITY OR FITNESS FOR INTENDED USE OF ITS PRODUCTS IN ANY CUSTOMER'S APPLICATION. Each customer should determine the suitability of SELLER'S materials for the customer's particular use through appropriate testing and analysis. SABIC Inno- vative Plastics is a trademark of SABIC Holding Europe BV.</small>
--	--

ALUMINUM COMPONENT PROPERTIES

MEMBER	DIE NO.	ALLOY	AREA (in <sup>2</sup> )	S <sub>x</sub> (in <sup>3</sup> )	S <sub>y</sub> (in <sup>3</sup> )	I <sub>x</sub> (in <sup>4</sup> )	I <sub>y</sub> (in <sup>4</sup> )
Side Fascia	24089	6063-T5	0.609	0.473	0.0709	1.131	0.071
Heavy Duty T-Bar	-	6061-T6	1.424	0.607	0.428	1.201	0.672
Square Post	24250	6061-T6	0.832	0.713	0.713	0.980	0.980
T-Bar Cap	24251	6061-T6	0.392	0.166	0.110	0.168	0.130
F-Section	24252	6063-T5	0.146	0.008	0.031	0.004	0.029
Hanging Rail	24255	6061-T6	1.064	1.349	0.348	3.264	0.678
Top Shoe	24729	6061-T6	1.064	0.118	0.450	0.131	0.563
Bottom Shoe	24882	6061-T6	0.846	0.140	0.657	0.178	1.810
Colonial Gutter	30111	6063-T5	1.229	0.430	1.890	1.279	5.807
Heavy Duty I-Beam	30278	6061-T6	1.680	3.426	0.691	11.357	1.037

NOTES:

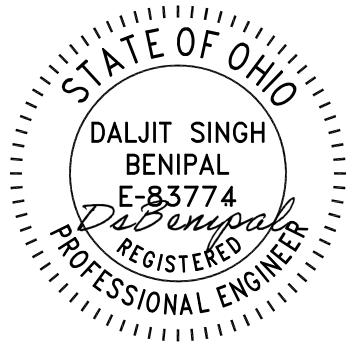
- WHERE HEAVY DUTY I-BEAM IS MENTIONED, THIS INCLUDES ALL BEAMS; REINFORCED, 6" CHANNEL BEAMS AND 8" CHANNEL BEAMS.

PANEL TOLERANCES

GAUGE/WEIGHT	STRUCTURE	WEIGHT	GAUGE	WIDTH	LENGTH < 20FT/6M	LENGTH > 20FT/6M
0.177in 0.205lb/ft <sup>2</sup> 4.5mm 1.0 kg/m <sup>2</sup>	2RS	+/- 1%	+/-7%	+/-0.5%	+0.472in +12mm	+1.81in +30mm
0.236in 0.266 lb/ft <sup>2</sup> 6.0mm 1.3 kg/m <sup>2</sup>	2RS	+/- 1%	+/-5%	+/-0.5%	+0.472in +12mm	+1.81in +30mm
0.315in 0.348 lb/ft <sup>2</sup> 8.0mm 1.7 kg/m <sup>2</sup>	2RS/3TS	+/- 1%	+/-5%	+/-0.5%	+0.472in +12mm	+1.81in +30mm
0.394in 0.409 lb/ft <sup>2</sup> 16.0mm 2.0 kg/m <sup>2</sup>	2RS/3TS	+/- 1%	+/-5%	+/-0.5%	+0.472in +12mm	+1.81in +30mm
0.63in 0.573 lb/ft <sup>2</sup> 16.0mm 2.8 kg/m <sup>2</sup>	3TS	+/- 2%	+/-3%	+/-0.5%	+0.472in +12mm	+1.81in +30mm
0.787in 0.614 lb/ft <sup>2</sup> 20.0mm 3.0 kg/m <sup>2</sup>	3TS	+/- 2%	+/-3%	+/-0.5%	+0.472in +12mm	+1.81in +30mm
0.984in 0.655 lb/ft <sup>2</sup> 25.0mm 3.2 kg/m <sup>2</sup>	3TS	+/- 2%	+/-3%	+/-0.5%	+0.472in +12mm	+1.81in +30mm

NOTES:

- THE LEXAN THERMOCLEAR 15 POLYCARBONATE SHEETS (TM) ARE MANUFACTURED BY SAUDI BASIC INDUSTRIES CORPORATION (SABIC).
- ALL TESTS, INCLUDING TOLERANCES, IMPACT TESTING, WEATHER RESISTANCE AND FIRE RATING, ON THE LEXAN THERMOCLEAR 15 POLYCARBONATE SHEETS (TM) HAVE BEEN CONDUCTED BY SABIC. ALL CONCLUSIONS AND CALCULATIONS HEREIN ARE PROVIDED BY SABIC PRODUCT DATA.



3453 West 140th Street  
Cleveland, OH 44111  
PH (855)412-7444  
Email: info@brightcovers.com

This drawing and the information it contains are the property of Translucent LLC dba Bright Covers. It is not to be copied or traced, nor is its contents to be misused in any way.

REVISIONS

NO.	DESCRIPTION	DATE
0	ISSUED FOR PERMIT	07/18/2023

BRIGHTCOVERS ADDITION



11 ATTERBURY BLVD.  
HUDSON, OH 44236

SPECIFICATIONS

Dwn: SL Scale: AS NOTED

Dwg No. Rev.

6

0

SPECIFICATIONS - OHIO

- A. DESIGN CRITERIA
- THE BRIGHTCOVERS CANOPY SYSTEM IS A PRE-MANUFACTURED PRODUCT AND SHALL BE DESIGNED AND INSTALLED IN ACCORDANCE WITH THE STRUCTURAL REQUIREMENTS SET FORTH IN THE 2017 OHIO BUILDING CODE (OBC).
  - ALL STRUCTURAL ELEMENTS AND SYSTEMS MADE OF ALUMINUM CONFORM TO AA ALUMINUM DESIGN MANUAL (ADM) 2020 REQUIREMENTS.
  - ALL ALUMINUM ALLOYS CONFORM TO THE AA ALUMINUM STANDARDS AND DATA 2017.
  - THE APPLICABLE STRUCTURAL LOADS HAVE BEEN TAKEN INTO ACCOUNT IN ACCORDANCE WITH THE ASCE 7-10 (MINIMUM DESIGN LOADS FOR BUILDINGS AND OTHER STRUCTURES).

SCHEDULE 1

DESIGN PRESSURES (PSF)					
BASIC WIND SPEED	LIVE/SNOW LOAD	EXPOSURE	BEAMS AND T-BARS	COLUMNS	LATERAL DESIGN PRESSURES
115	30	B	+35.6/-11.9	+34.8/-10.5	+18.1/-12.1

SCHEDULE 2

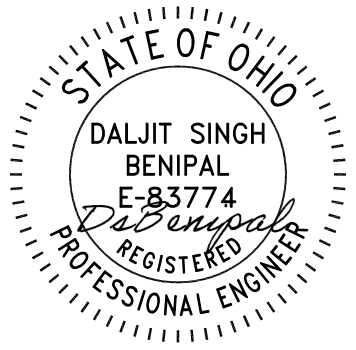
T-BAR SPANS				
LIVE/SNOW LOAD (PSF)	PANEL SPAN 24"		PANEL SPAN 48"	
	OVERHANG (FT)	MAX SPAN (FT)	OVERHANG (FT)	MAX SPAN (FT)
25	0	14.50	0	10.25
	1	14.50	1	10.25
	2	14.75	2	10.50
	3	15.00	3	10.75
30	0	14.00	0	10.00
	1	14.25	1	10.00
	2	14.25	2	10.25
	3	15.00	3	10.00

SCHEDULE 3

PANEL SPANS			
BASIC WIND SPEED	LIVE/SNOW LOAD	EXPOSURE	ALLOWABLE PANEL SPAN
115	30	B	32"

SCHEDULE 4

BEAM SPANS								
BEAM	BASIC WIND SPEED	LIVE/SNOW LOAD	EXPOSURE	ALLOWABLE BEAM SPAN INTERIOR	ALLOWABLE BEAM SPAN END W/ 0' OH	ALLOWABLE BEAM SPAN END W/ 1' OH	ALLOWABLE BEAM SPAN END W/ 2' OH	ALLOWABLE BEAM SPAN END W/ 3' OH
REINFORCED I-BEAM	115	30	B	216.00"	216.00"	216.00"	216.00"	210.84"
6" CHANNEL BEAM				288.00"	288.00"	288.00"	288.00"	288.00"
8" CHANNEL BEAM				288.00"	288.00"	288.00"	288.00"	288.00"



3453 West 140th Street  
Cleveland, OH 44111  
PH (855)412-7444  
Email: info@brightcovers.com

This drawing and the information it contains are the property of Translucent LLC dba Bright Covers. It is not to be copied or traced, nor is its contents to be misused in any way.

REVISIONS

NO.	DESCRIPTION	DATE
0	ISSUED FOR PERMIT	07/18/2023

BRIGHTCOVERS ADDITION



11 ATTERBURY BLVD.  
HUDSON, OH 44236

CALCULATION TABLES

Dwn: SL Scale: AS NOTED

Dwg No. Rev.

7

0



Images

















