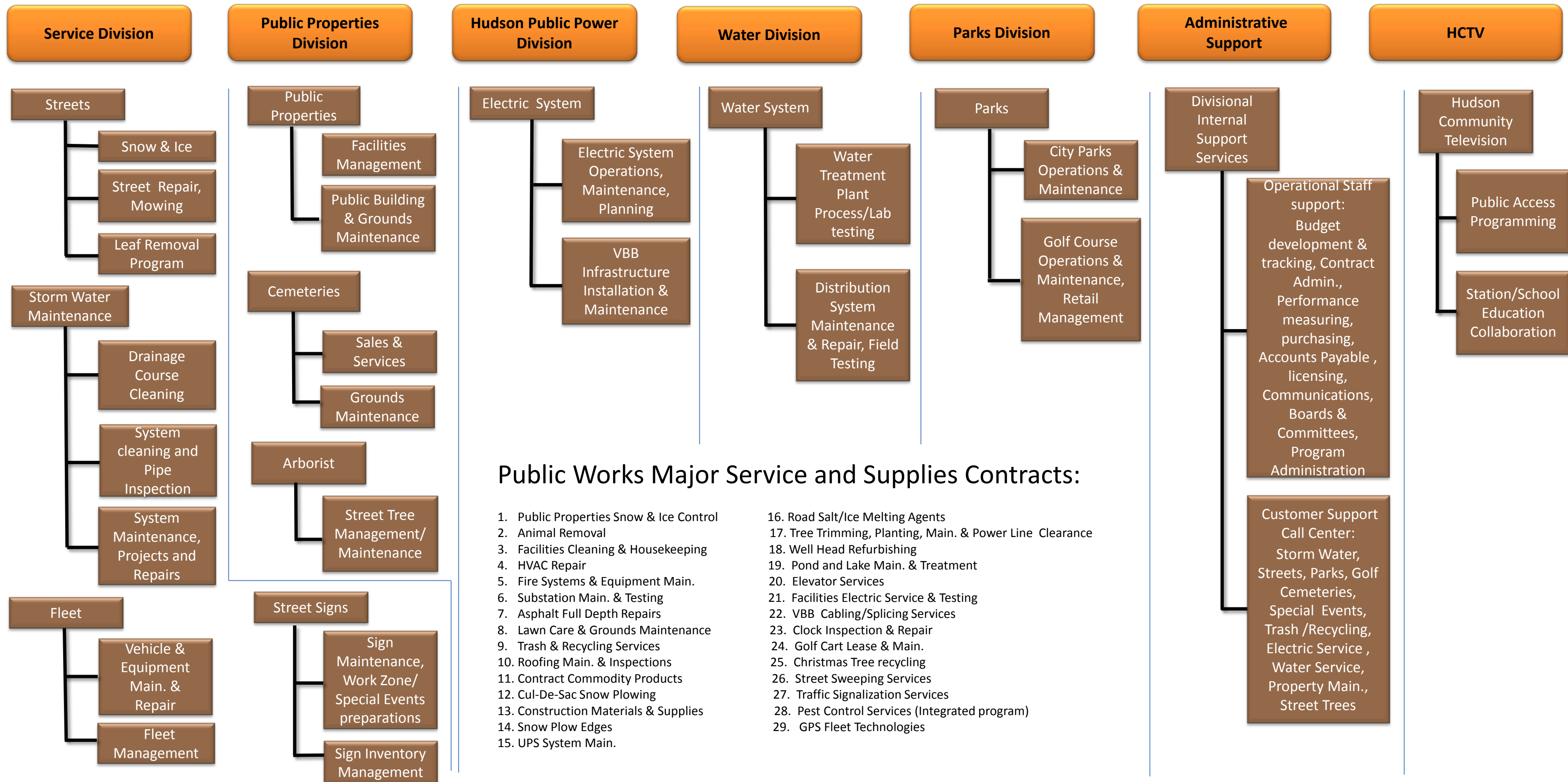


**Public Works Department**

PW Divisional Chart 2017



**Public Works Major Service and Supplies Contracts:**

- Public Properties Snow & Ice Control
- Animal Removal
- Facilities Cleaning & Housekeeping
- HVAC Repair
- Fire Systems & Equipment Main.
- Substation Main. & Testing
- Asphalt Full Depth Repairs
- Lawn Care & Grounds Maintenance
- Trash & Recycling Services
- Roofing Main. & Inspections
- Contract Commodity Products
- Cul-De-Sac Snow Plowing
- Construction Materials & Supplies
- Snow Plow Edges
- UPS System Main.
- Road Salt/Ice Melting Agents
- Tree Trimming, Planting, Main. & Power Line Clearance
- Well Head Refurbishing
- Pond and Lake Main. & Treatment
- Elevator Services
- Facilities Electric Service & Testing
- VBB Cabling/Splicing Services
- Clock Inspection & Repair
- Golf Cart Lease & Main.
- Christmas Tree recycling
- Street Sweeping Services
- Traffic Signalization Services
- Pest Control Services (Integrated program)
- GPS Fleet Technologies