

E. SAPPHIRE DRIVE 50'

MON. BOX W/IRON PIN
FD. & USED

O.L. 6
O.L. 7

MON. BOX
W/IRON PIN

PINE GROVE

DRIVE 50'

HUDSON PINES
CAB. J - SLIDES 264-266

23

22

21

20

19

18

17

1319.54' DEED
1318.73' PLAT & SET

PRIVATE OPEN SPACE
AND STORM WATER
MANAGEMENT EASEMENT

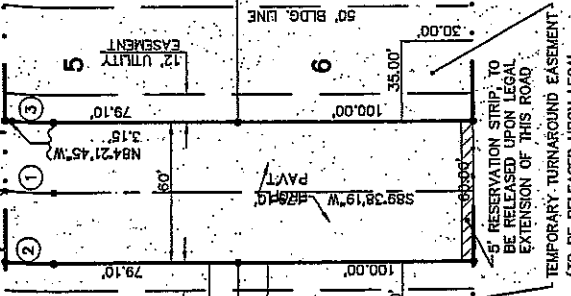
1
40,000 S.F.
0.9183 Ac.

3
37,503 S.F.
0.8609 Ac.

2
40,000 S.F.
0.9183 Ac.

4
37,435 S.F.
0.8594 Ac.

SEE SHEET 3 OF 3



S89°17'20"W 87.50'

S89°17'20"W 87.50'

S89°17'20"W 200.00'

S89°17'20"W 87.50'

S89°17'20"W 87.50'

12.5'

12.5'

12.5'

12.5'

12.5'

12.5'

12.5'

12.5'

12.5'

12.5'

S02°14'1"E 400.00'

S02°14'1"E 119.82'

S02°14'1"E 374.65'

S02°14'1"E 374.05'

S02°14'1"E 374.05'

S02°14'1"E 374.05'

400.00'

400.00'

400.00'

400.00'

400.00'

400.00'

400.00'

400.00'

400.00'

S02°14'1"E 1317.06' CALC.
1319.97' DEED

Clarence E. Berkeley, Jr.
Rec. No. 54496931