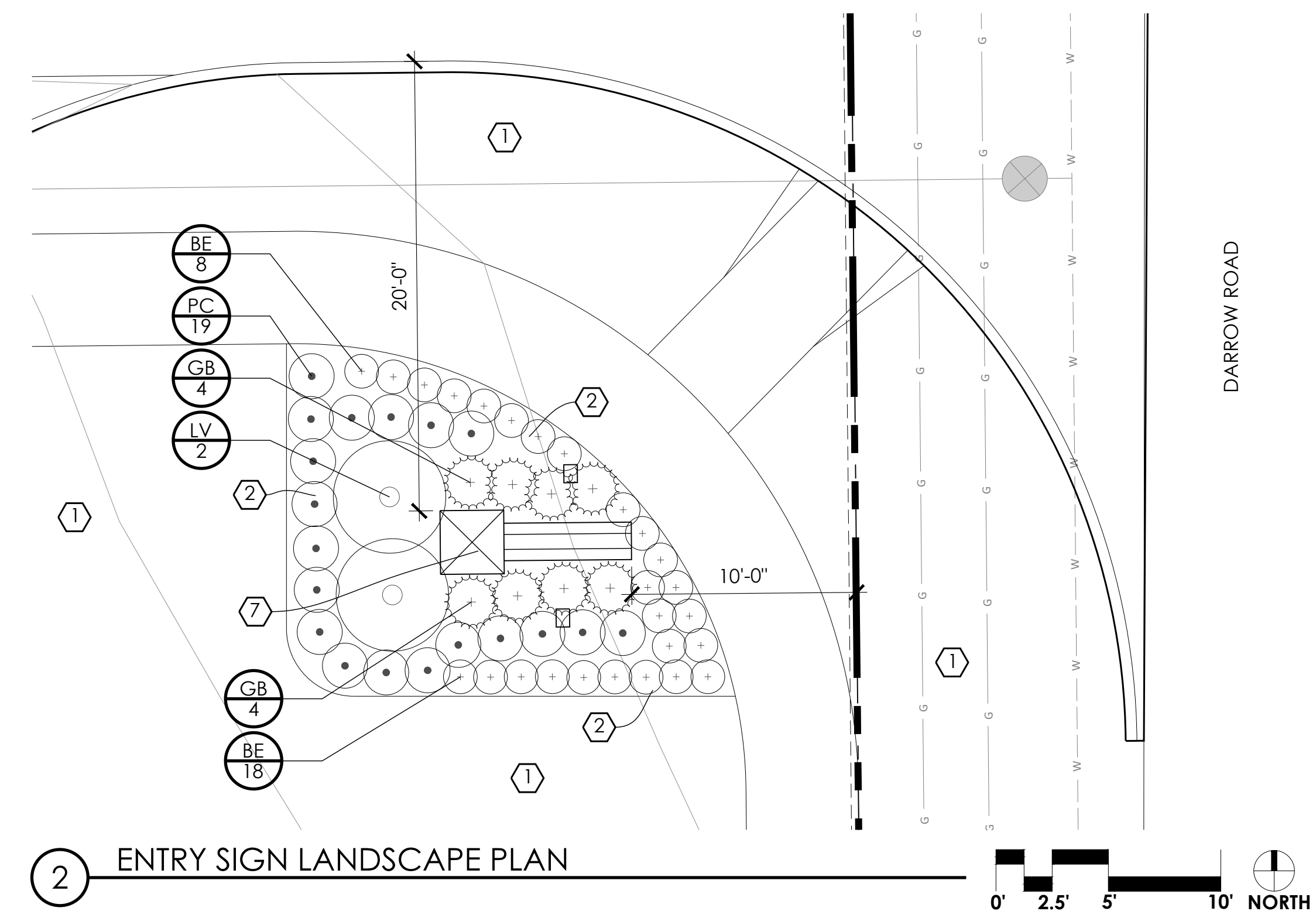
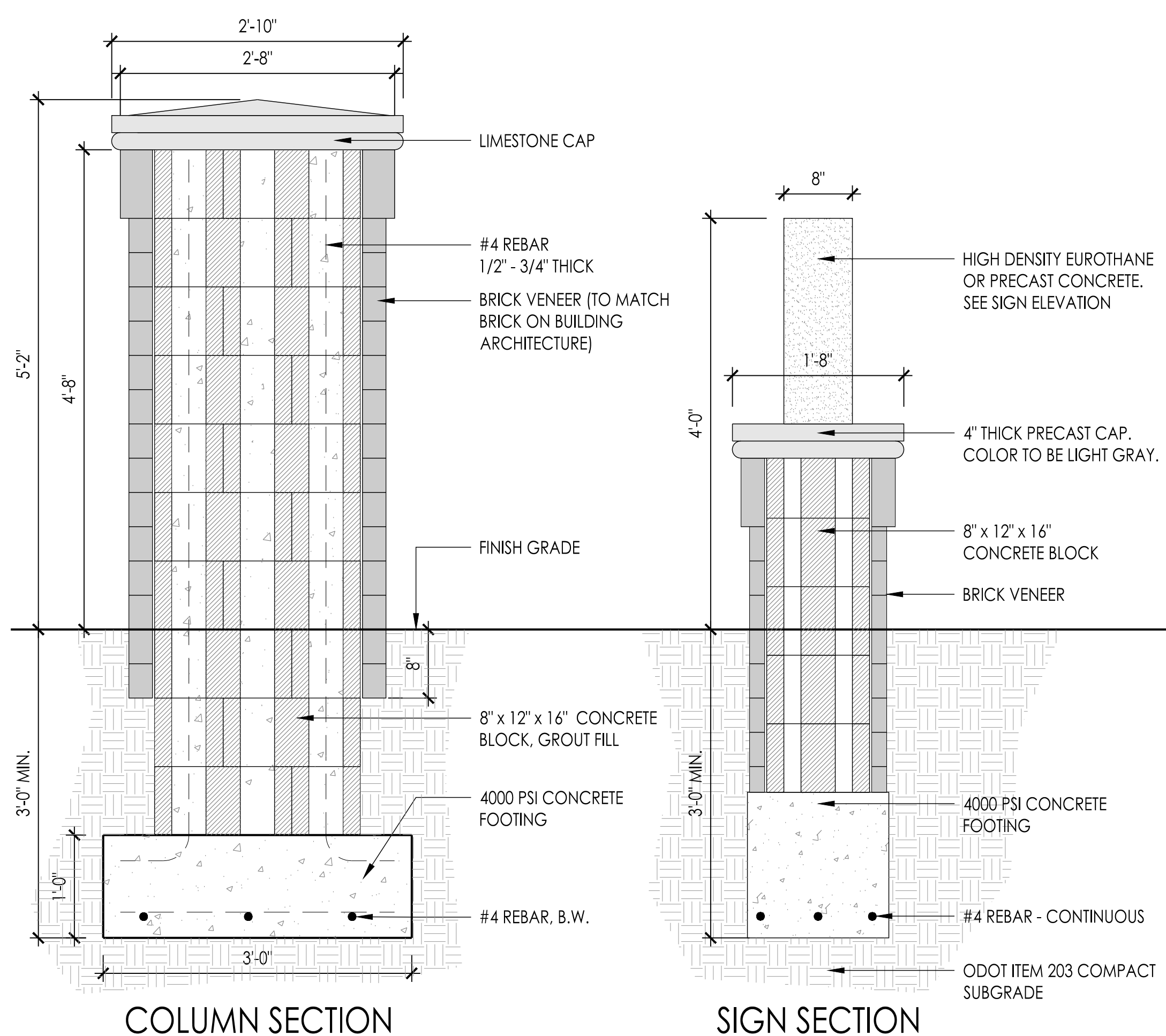


1 FAR EAST LANDSCAPE PLAN



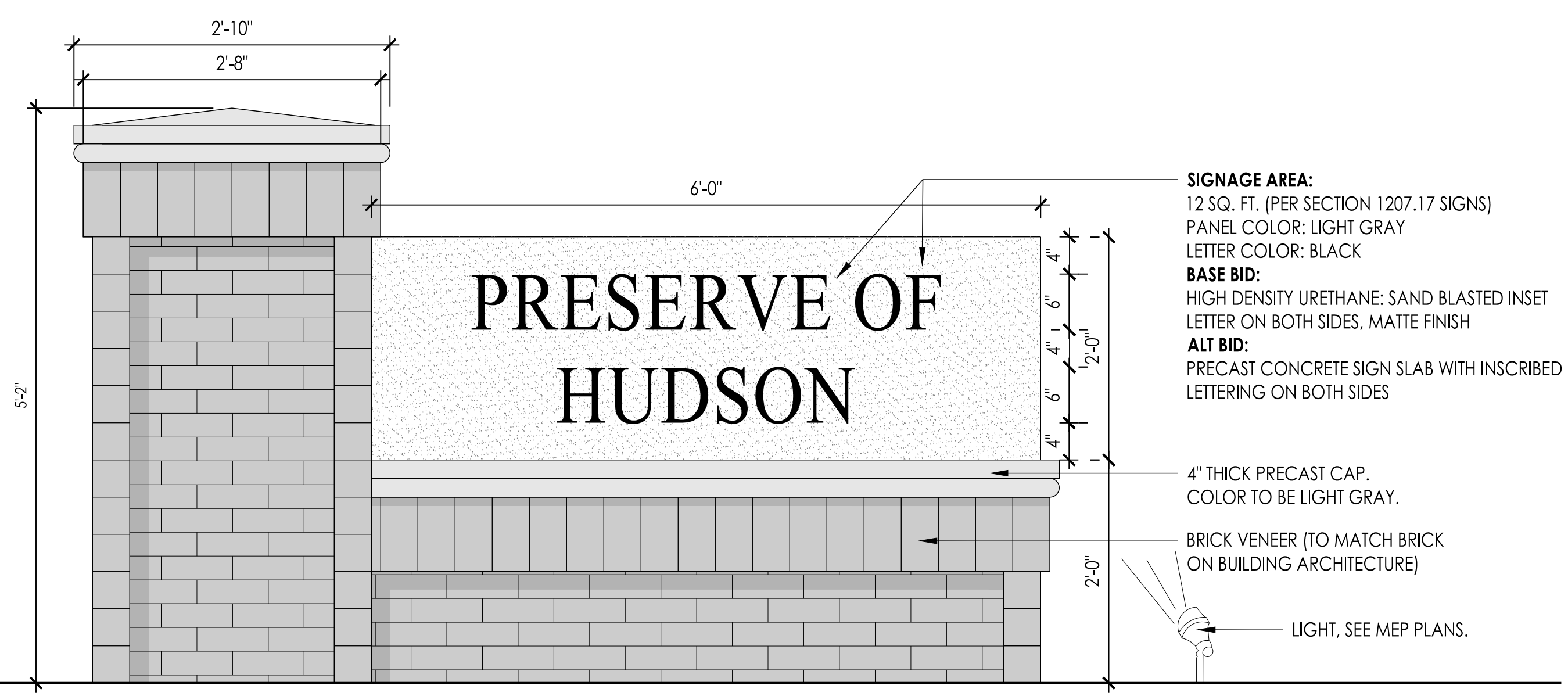
2 ENTRY SIGN LANDSCAPE PLAN



3 ENTRY SIGN

NOTE:
DETAILS SHOWN FOR BASIS OF DESIGN ONLY.
CONTRACTOR TO SUBMIT BRICK SAMPLES AND
SHOP DRAWINGS OF ENTRY SIGN AND TYPICAL
COLUMN FOR OWNER AND STRUCTURAL
ENGINEER'S REVIEW PRIOR TO CONSTRUCTION.

SIGN ELEVATION



SIGNAGE AREA:
12 SQ. FT. (PER SECTION 1207.17 SIGNS)
PANEL COLOR: LIGHT GRAY
LETTER COLOR: BLACK
BASE BID:
HIGH DENSITY URETHANE: SAND BLASTED INSET
LETTER ON BOTH SIDES, MATTE FINISH
ALT BID:
PRECAST CONCRETE SIGN SLAB WITH INSCRIBED
LETTERING ON BOTH SIDES

4" THICK PRECAST CAP.
COLOR TO BE LIGHT GRAY.

BRICK VENEER (TO MATCH BRICK
ON BUILDING ARCHITECTURE)

LIGHT, SEE MEP PLANS.

GENERAL NOTES:

1. EACH CONTRACTOR IS TO VERIFY WITH OWNER AND UTILITY COMPANIES THE LOCATIONS OF ALL UTILITIES PRIOR TO CONSTRUCTION. TO DETERMINE IN THE FIELD THE ACTUAL LOCATIONS AND ELEVATIONS OF ALL EXISTING UTILITIES, WHETHER SHOWN ON THE PLANS OR NOT. THE CONTRACTOR SHALL CALL UTILITY PROTECTION SERVICE 72 HOURS PRIOR TO CONSTRUCTION.
2. EXAMINE FINISH SURFACE, GRADES, TOPSOIL QUALITY AND DEPTH. DO NOT START ANY WORK UNTIL UNSATISFACTORY CONDITIONS HAVE BEEN CORRECTED. VERIFY LIMITS OF WORK BEFORE STARTING.
3. CONTRACTOR RESPONSIBLE FOR COST OF REPAIRS TO EXISTING SITE CONDITIONS WHEN DAMAGED BY CONTRACTOR. REPAIR TO THE SATISFACTION OF THE OWNER.
4. ALL PLANT MASSES TO BE CONTAINED WITHIN 3" DEEP HARDWOOD MULCH BED WITH SMOOTH/CONTINUOUS SHOVEL/DUG EDGE WHEN NOT BOUND BY PAVEMENT.
5. CONTRACTOR SHALL MAINTAIN POSITIVE DRAINAGE IN LAWN AREAS.
6. FINE GRADE LAWN AREAS TO PROVIDE A SMOOTH AND CONTINUAL GRADE FREE OF IRREGULARITIES OR DEPRESSIONS.
7. CONTRACTOR SHALL SEED OR SOD ALL AREAS DISTURBED DURING CONSTRUCTION.
8. ALL PLANTS SHALL MEET OR EXCEED STANDARDS SET IN THE U.S.A. STANDARD FOR NURSERY STOCK.
9. ALL PLANTING OPERATIONS SHALL ADHERE TO THE AMERICAN ASSOCIATION OF NURSERYMEN STANDARDS.
10. QUANTITIES SHOWN ARE INTENDED TO ASSIST CONTRACTOR IN EVALUATING THEIR OWN TAKE OFFS AND ARE NOT GUARANTEED AS ACCURATE REPRESENTATIONS OF REQUIRED MATERIALS. THE CONTRACTOR SHALL BE RESPONSIBLE FOR THEIR BID QUANTITIES AS REQUIRED BY THE PLAN.
11. WHERE TREE LOCATIONS OCCUR UNDER EXISTING OVERHEAD UTILITIES OR CROWD EXISTING TREES, NOTIFY OWNER'S REPRESENTATIVE TO ADJUST TREE LOCATIONS.
12. SEE SHEET L6 FOR PLANT LIST AND QUANTITIES.

CONSTRUCTION NOTES:

- 1 LAWN AREA, TOPSOIL TO BE FLUSH WITH ADJACENT PAVED SURFACES.
- 2 LANDSCAPE AREA, PLANT AS INDICATED AND MULCH ENTIRE AREA WITH HARDWOOD BARK MULCH AT 3" MIN.
- 7 ENTRY SIGN
SEE DETAIL 3 ON SHEET L5.



PLANT MATERIALS LIST

NOTE: CONTRACTOR RESPONSIBLE FOR PLANT QUANTITIES SHOWN ON PLAN.

QTY.	KEY	COMMON NAME	BOTANICAL NAME	SIZE	ROOT	L3	L4	L5	REMARKS
SHADE TREES									
19	FE	FRONTIER ELM	Ulmus 'Frontier'	2" Cal.	B&B	5	14	-	
12	GZ	GREEN VASE ZELKOVA	Zelkova serrata 'Green Vase'	2" Cal.	B&B	-	12	-	
41	LP	EXCLAMATION LONDON PLANETREE	Platanus acerifolia 'Morton Circle'	2" Cal.	B&B	2	25	14	
13	SH	SKYLINE HONEYLOCUST	Gleditsia triacanthos 'Skycole'	2" Cal.	B&B	1	12	-	
6	SM	SIENNA GLEN MAPLE	Acer x freemanii 'Sienna'	2" Cal.	B&B	3	3	-	
4	SW	SWAMP WHITE OAK	Quercus bicolor	2" Cal.	B&B	2	2	-	
6	TP	TULIP POPLAR	Liriodendron tulipifera	2" Cal.	B&B	2	4	-	
ORNAMENTAL TREES									
18	AC	ADIRONDACK CRABAPPLE	Malus 'Adirondack'	2" Cal.	B&B	-	18	-	
5	ER	EASTERN REDBUD	Cercis canadensis	2" Cal.	B&B	1	4	-	
8	IS	IVORY SILK JAPANESE TREE LILAC	Syringa reticulata 'Ivory Silk'	2" Cal.	B&B	-	8	-	
5	KD	KOUSA DOGWOOD	Cornus Dogwood	6' Hgt.	B&B	2	3	-	MULTI-STEM
17	RP	RAINBOW PILLAR SERVICEBERRY	Amelanchier canadensis 'Glen Form'	6' Hgt.	B&B	-	17	-	MULTI-STEM
6	JM	JANE MAGNOLIA	Magnolia 'Jane'	6' Hgt.	B&B	2	4	-	MULTI-STEM
EVERGREEN TREES									
8	BH	BLACK HILLS SPRUCE	Picea glauca Densata	6' Hgt.	B&B	-	8	-	
9	DF	DOUGLAS FIR	Pseudotsuga menziesii	6' Hgt.	B&B	-	9	-	
15	EC	EASTERN RED CEDAR	Juniperus virginiana	6' Hgt.	B&B	-	15	-	
SHRUBS									
14	BB	BOTTLE BRUSH BUCKEYE	Aesculus parvifolia	36" HGT.	CONT.	4	12	-	
8	G8	GEM BOX INKBERRY	Ilex Glabra Gem Box	24" HGT.	CONT.	-	-	8	
54	GV	GREEN VELVET BOXWOOD	Buxus x 'Green Velvet'	24" HGT.	CONT.	12	42	-	
16	KL	'MISS KIM' KOREAN LILAC	Syringa patula 'Miss Kim'	36" HGT.	CONT.	8	8	-	
66	LV	LEATHERLEAF VIBURNUM	Viburnum rhytidophyllum	36" HGT.	CONT.	-	64	2	
13	OH	OAKLEAF HYDRANGEA	Hydrangea quercifolia	36" HGT.	CONT.	5	8	-	
31	SS	LITTLE HENRY SWEETSPIRE	Itea virginica 'Spirch' LITTLE HENRY	24" HGT.	CONT.	6	25	-	
PERENNIALS									
26	BE	BLACK-EYED SUSAN	Rudbeckia hirta	NO. 1	CONT.	-	-	26	
19	PC	PURPLE CONEFLOWER	Echinacea purpurea	NO. 1	CONT.	-	-	19	

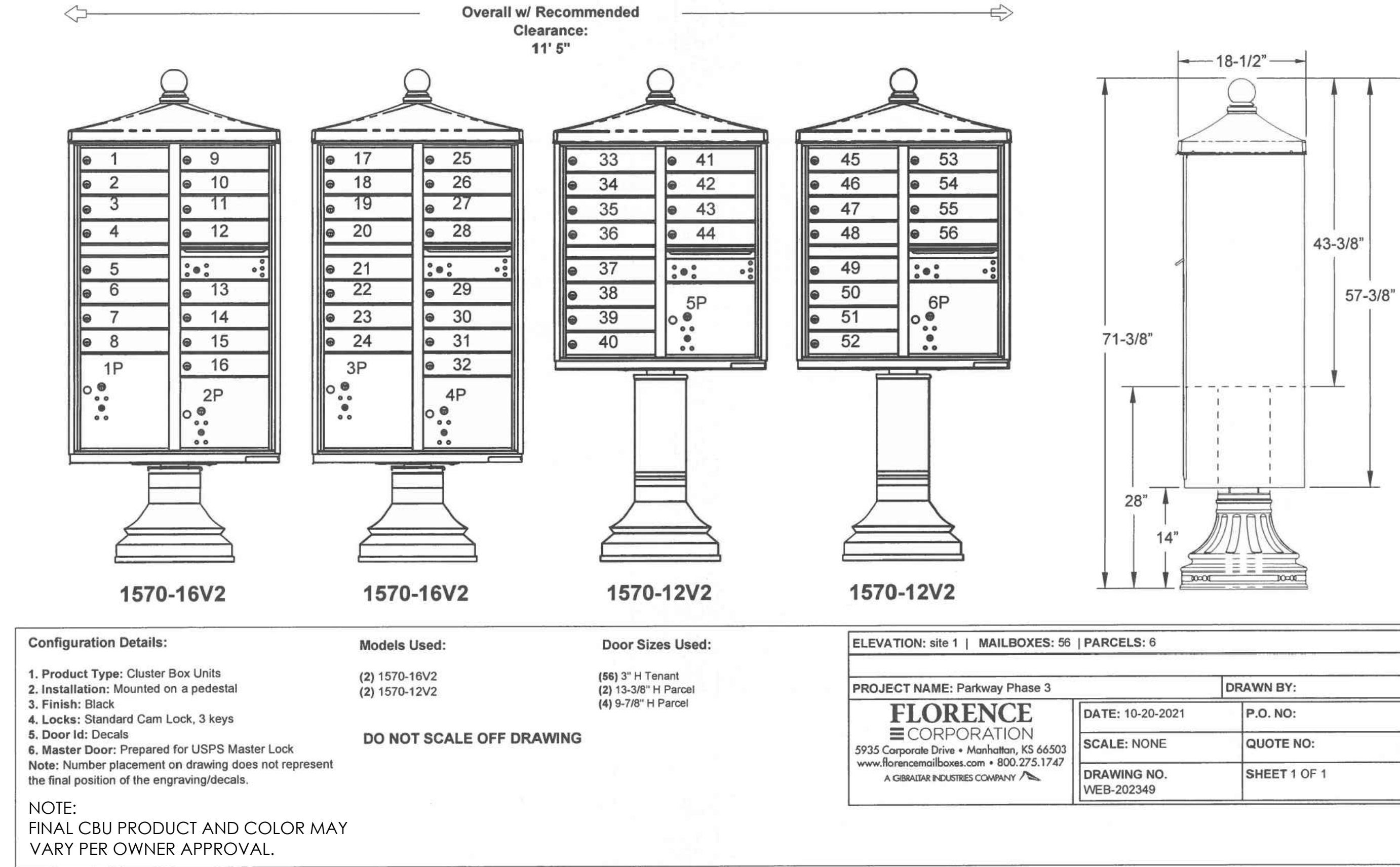
SAMPLE COST ESTIMATE

NOTE: CONTRACTOR RESPONSIBLE FOR FINAL COST ESTIMATE BASED ON FINAL DESIGN.

Preserve of Hudson, Hudson, OH

Note: This estimate is approximate only and will be adjusted with the final design.

Item	Price	Unit	Quantity	Cost
Deciduous Trees	\$750.00	EA	101	\$75,750.00
Shrubs	\$65.00	EA	202	\$13,130.00
Orn Trees	\$750.00	EA	59	\$44,250.00
Evergreen Trees	\$650.00	EA	32	\$20,800.00
Perennials	\$25.00	EA	45	\$1,125.00
Lawn Seed	\$2.50	SY	14,586	\$36,465.00
Wetland Seed Mix	\$600.00	EA	1	\$600.00
TOTAL				\$192,120.00



1 CLUSTER BOX UNIT DETAIL

N.T.S.



NOTE:
IMAGE SHOWN FOR BASIS OF DESIGN. FINAL PAVILION PRODUCT MAY VARY PER OWNER APPROVAL.

2 COMMUNITY PAVILION DETAIL

N.T.S.



Preserve of Hudson

L1 - Illustrative Site Plan

Hudson, OH / March 18, 2025

TRIBAN
INVESTMENT, LLC

EDGE
www.edgela.com