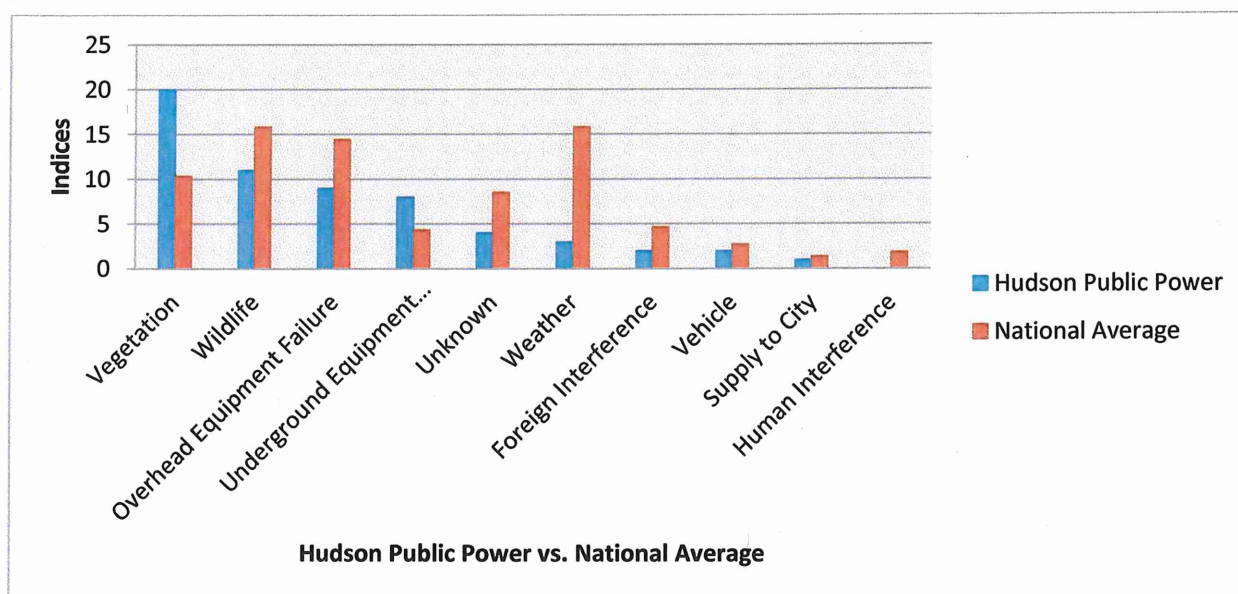


Annual Reliability Report Outage Categories



2014	Vegetation	Wildlife	Overhead Equipment Failure	Underground Equipment Failure	Unknown	Weather	Foreign Interference	Vehicle	Supply to City	Human Interference	Total Outages
Hudson Public Power	20	11	9	8	4	3	2	2	1	0	60
Nation Average	10.32	15.81	14.41	4.29	8.51	15.81	4.62	2.68	1.34	1.81	79.6

2014 Region 2 Index Totals	Average System Availability ASAI	Customer Average Interruption Duration CAIDI	System Average Interruption Duration SAIDI	System Average Interruption Frequency SAIFI
Hudson Public Power	99.98%	64.78 mins	4.69 mins	0.093
Nation Average	99.93%	81.27 mins	68.58 mins	0.83

Summary

A review of the Indices totals reveals Hudson Public Power remains a very reliable electric provider. Although slightly declining from the previous year, they still reflect well on our department and are much better than regional averages. Other items of note in this statistical report include:

- Tree-related outages returned to a more average range. Last year's cool, wet summer may have contributed to accelerated tree growth, and the wet soil conditions to trees, outside normal clearance right-of-ways, falling into electric lines.
- A relaying issue at Eastside was identified and corrected. The issue caused power loss to all city residents for approximately 30 minutes.

As data continues to be collected, much can be learned about our electrical system and related issues. This information will continue to be analyzed for developing outage trends so corrective actions can be planned and implemented. In conclusion, this report is utilized as just one part of an overall program to continually improve electrical reliability for all of our Hudson Public Power consumer-owners.