

LOCATION MAP
NOT TO SCALE

1. GENERAL SCOPE OF WORK INCLUDES: BUILDING REMODEL AND PARKING LOT ADDITION.
2. PARKING REQUIRED: FOUR SPACES PER BAY PLUS ONE SPACE PER EMPLOYEE
(4 * 3 BAYS = 12 + 8 EMPLOYEES = 20 PARKING SPACES)

PROVIDED PARKING: (12) VACUUM SPACES AND (19) STANDARD PARKING SPACES.

1.	ZONING DATA	
A.	PARCEL:	3005239
B.	ADDRESS:	5611 DARROW ROAD HUDSON, OH 44236
C.	PROPERTY AREA:	EXISTING ±1.523 ACRES OUTSIDE ROW (±66,342 S.F.) PROPOSED ±1.523 ACRES OUTSIDE ROW (±66,342 S.F.)
D.	ZONING:	7-OUTER VILLAGE COMMERCIAL CORRIDOR
E.	ADJACENT ZONING:	NORTH: 7-OUTER VILLAGE COMMERCIAL CORRIDOR EAST: 3-OUTER VILLAGE RESIDENTIAL NBHD. SOUTH: 8-INDUSTRIAL/BUSINESS PARK WEST: 8-INDUSTRIAL/BUSINESS PARK (ACROSS DARROW ROAD)
F.	IMPERVIOUS AREA:	±36,915 S.F. (.56% OF PROPERTY)
G.	OPEN SPACE AREA:	±29,427 S.F. (.44% OF PROPERTY)
H.	FLOODPLAIN DESIGNATION:	PARCEL IS LOCATED WITHIN "ZONE X" AS INDICATED BY THE FLOOD INSURANCE RATE MAP (FIRM) COMMUNITY PANEL NUMBER 39153C0129F. EFFECTIVE DATE: APRIL 19, 2016; PUBLISHED BY THE FEDERAL EMERGENCY MANAGEMENT AGENCY.
2.	SETBACK REQUIREMENTS:	

SETBACK REQUIREMENTS						
	REQUIRED			PROVIDED		
	FRONT	SIDE	REAR	FRONT	SIDE	REAR
BUILDING	30'	15'	50'	71.1'	19.9'	98.3'
SIGNS	15'	-	-	15'	-	-
PARKING	30'	-	50'	42.4'	-	50.0'



OHIO
Utilities Protection
811 or
1-800-362-2764

SERVICE
Call Before You Dig

FORTY- EIGHT (48) HOURS BEFORE DIGGING IS
 TO COMMENCE, THE CONTRACTORS SHALL
 NOTIFY THE FOLLOWING AGENCIES: OHIO
 UTILITIES PROTECTION SERVICE AT 811 OR 1
 (800) 362-2764 AND ALL OTHER AGENCIES WHICH
 MIGHT HAVE UNDERGROUND UTILITIES
 INVOLVING THIS PROJECT AND ARE
 NONMEMBERS OF OHIO UTILITIES PROTECTION
 SERVICE

[illegible]

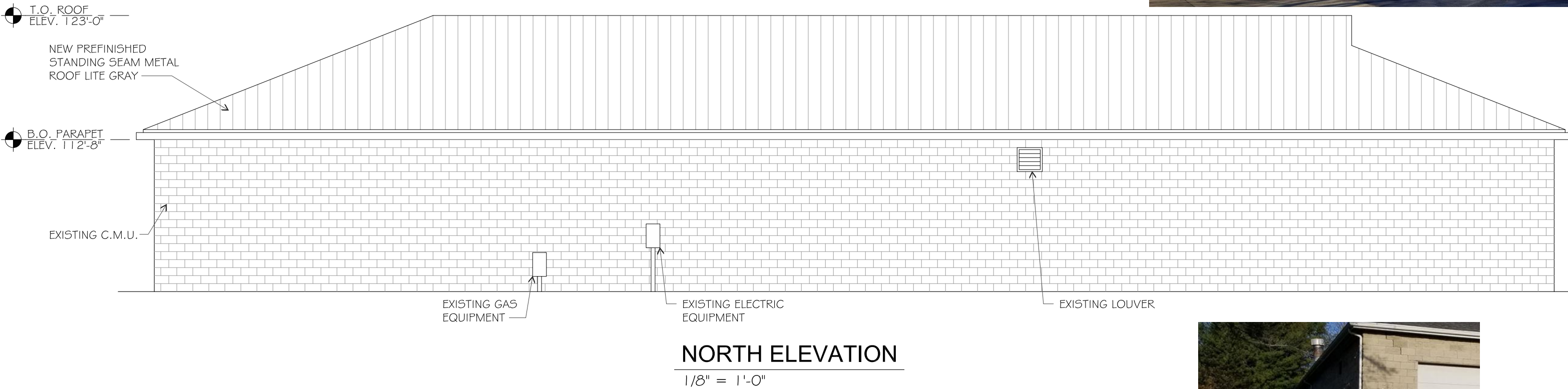
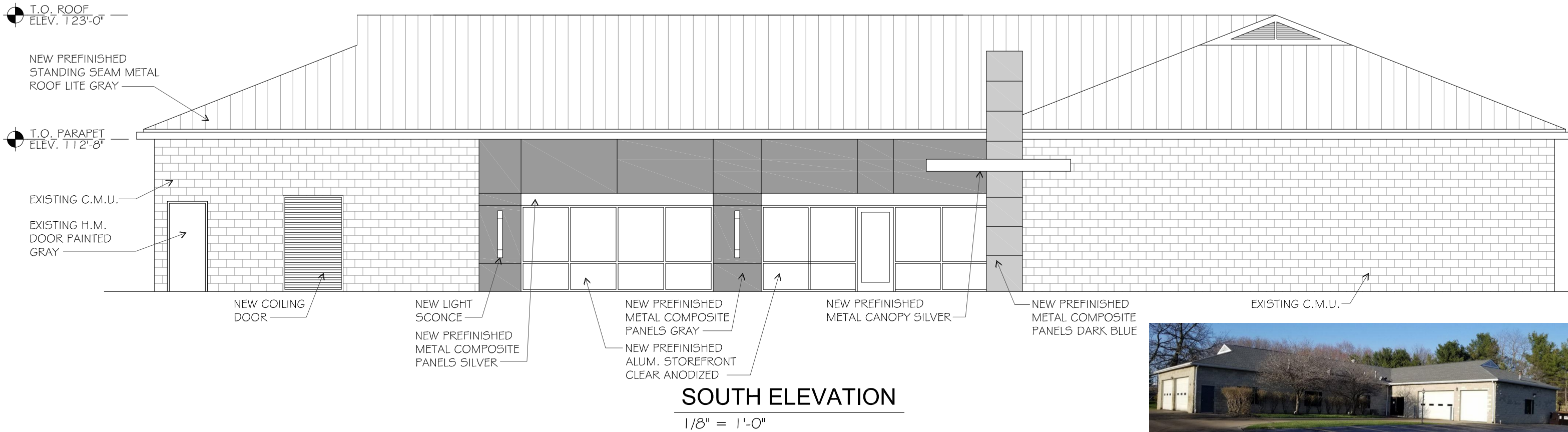
WATERWAY GAS AND WASH

WATERWAY - HUDSON

DARROW ROAD
CITY OF HUDSON SUMMIT COUNTY OHIO

SITE PLAN

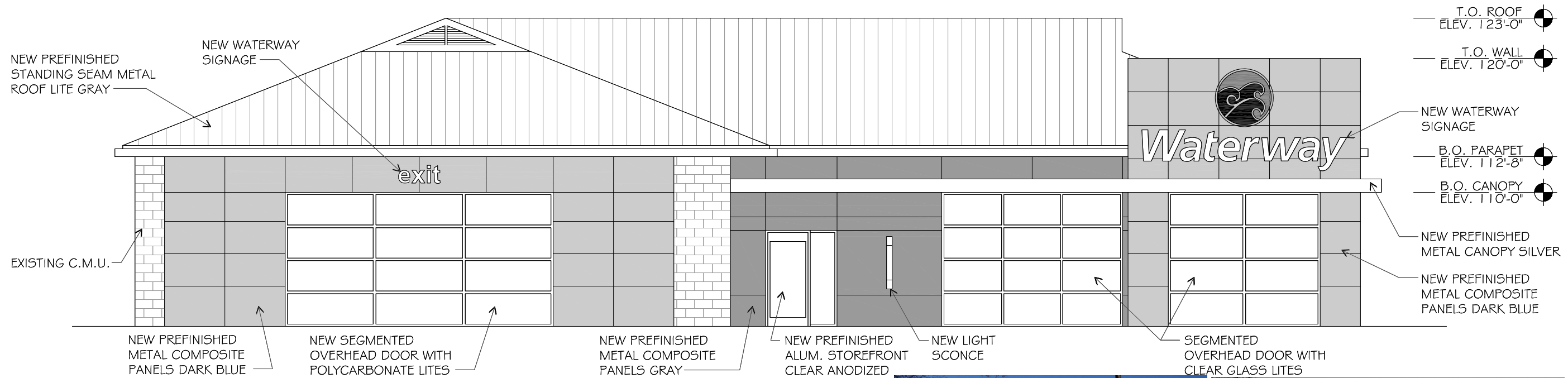
ISSUE:	
NOT FOR CONSTRUCTION	
DATE:	
08-20-2018	
JOB NO.:	755272
DESIGN:	JMS
DRAWN:	JMS
CHECKED:	CBW
SHEET NO.	
C1.0	



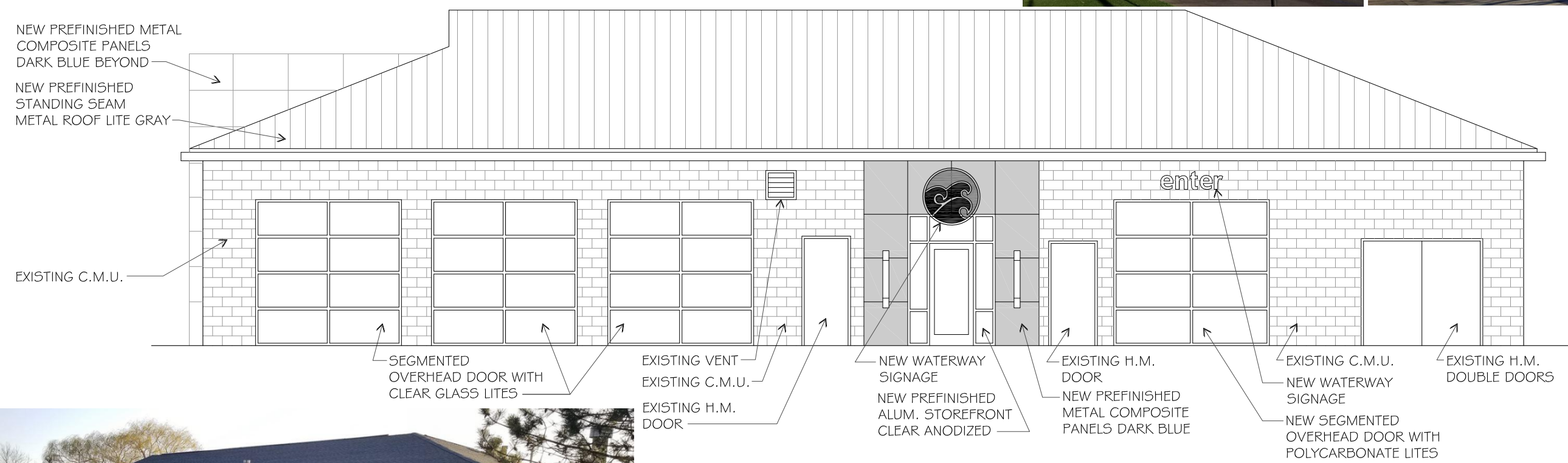
727 Goddard Ave.
Chesterfield, Missouri 63005

Waterway Carwash
Schematic Design
Hudson, Ohio





WEST ELEVATION
1/8" = 1'-0"



EAST ELEVATION
1/8" = 1'-0"



Waterway Carwash
Schematic Design
Hudson, Ohio

Date: 9.14.2018
SP 18002
738 Westport Plaza
St. Louis, Missouri 63146
phone: 314-434-9700 web: sp-sll.com









Series 401

1 3/4" x 4 1/2" Storefront Framing



CONFIGURATIONS

Shear Block • Screw Spline • Can Receptor

Series 401 is an economical flush glaze system available in both shear block and screw spline fabrication methods. Series 401 Storefront can accommodate all standard 1 3/4" entrances as well as WV410 vents. Vertical mullions will accept steel reinforcement to enhance structural performance.

Features

Optional Roto-Vent™ ventilator

Two fabrication/erection options (screw spline, shear block)

Open back and shear block door frames with transom bars and rubber weather stripping

The same glazing gasket used for exterior and interior

Accommodates up to 5/16" glazing

2-way corner mullions (90° & 135°)

3-way corner mullions (T-mullions)

0°-15° and 15°-30° variable mullions

Various height intermediate horizontals and sills

Accessory line of perimeter anchors, pocket fillers, door adaptors, etc.

Anodized and painted finishes available

Benefits

Allows ventilation while maintaining security

Method of installation fits job conditions

Provides field/shop flexibility for erector

Compatible with all 1 3/4" and 2" EFCO doors

Simplifies ordering and installation

Allows optimized use of gasket

Handles the most popular glass thicknesses

Design flexibility

Multifaceted elevations

Custom applications

Ability to maintain desired sight line

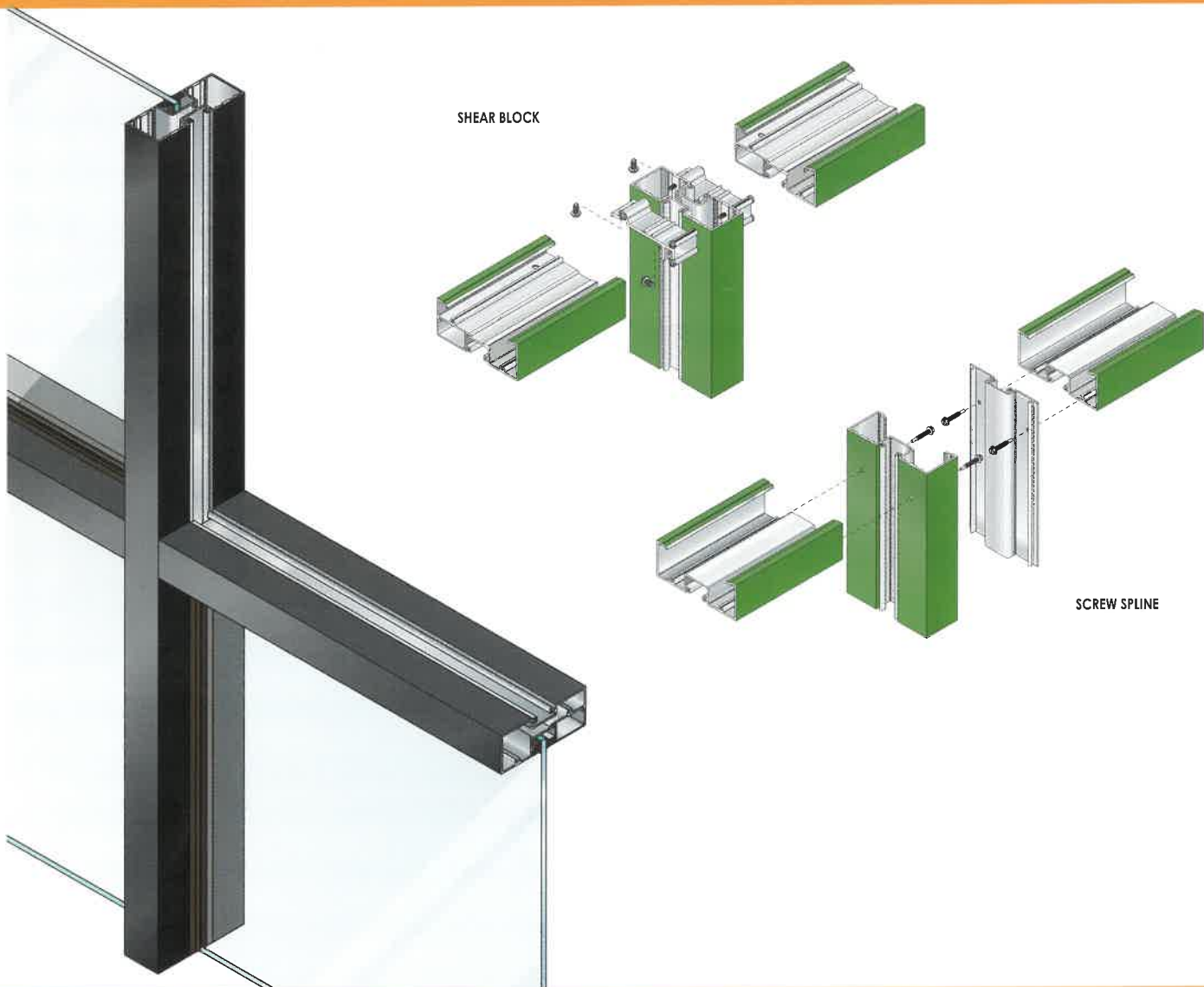
Increased product versatility

Multiple options to answer economic and aesthetic concerns



Series 401

1 3/4" x 4 1/2" Storefront Framing



PERFORMANCE DATA

SYSTEM 401 STOREFRONT SCREW SPLINE FRAMING

AIR INFILTRATION.....<.06 CFM/SF @ 6.24 PSF
 WATER.....NO LEAKAGE @ 10.0 PSF
 STRUCTURAL.....visit MyEFCO at www.efcocorp.com

SYSTEM 401 STOREFRONT CAN RECEPTOR FRAMING

AIR INFILTRATION.....<.06 CFM/SF @ 6.24 PSF
 WATER.....NO LEAKAGE @ 10.0 PSF
 STRUCTURAL.....visit MyEFCO at www.efcocorp.com

SYSTEM 401 STOREFRONT SHEAR BLOCK FRAMING

AIR INFILTRATION.....<.06 CFM/SF @ 6.24 PSF
 WATER.....NO LEAKAGE @ 10.0 PSF
 STRUCTURAL.....visit MyEFCO at www.efcocorp.com

A = Estimated values and/or designations
 B = Non-standard size or configuration
 C = Dual glazed
 D = 1" Insulated - 1/4" clear, 1/2" air, 1/4" clear
 E = 1" Insulated - 1/4" clear (Low Emissivity), 1/2" air, 1/4" clear
 F = 1" Insulated - 1/4" clear (Low Emissivity), 1/2" argon, 1/4" clear
 G = 1" Insulated - 1/4" clear, 1/2" air, 1/4" clear (Low Emissivity)

GLAZING

SYSTEM 401 CAN BE INSIDE OR OUTSIDE GLAZED WITH EXTRUDED ALUMINUM, SNAP-IN GLAZING BEAD. GLASS IS "DRY GLAZED" WITH TOP LOAD GASKET. GLAZINGS OF 3/16" TO 5/16" INFIL PANELS ARE ACCOMMODATED. SEE GLAZING CHART BELOW FOR EXACT SIZE.

SYSTEM 401 GLAZING CHART	POLYCARBONATE			GLASS OR PANEL												
	3/16"	1/4"	5/16"	3/16"	1/4"	1/4"	5/16"	7/16"	1/2"	9/16"	5/8"	3/4"	7/8"	15/16"	1"	1-1/16"
MONOLITHIC GLASS	C	A	C	C	A	A	C									
INSULATED GLASS																

*-Obscure glass thickness
 **-Laminated glass thickness

A-Available glazing option
 C-Adaptor and/or gasket required
 Blank - N/A

