

COMPASS
STUDIO

7948 Mayfield Road
Chesterland, OH 44026
440-635-0500

Joseph Park, Registered Architect
josephpark@compassstudio.com

PRELIMINARY
NOT FOR
CONSTRUCTION

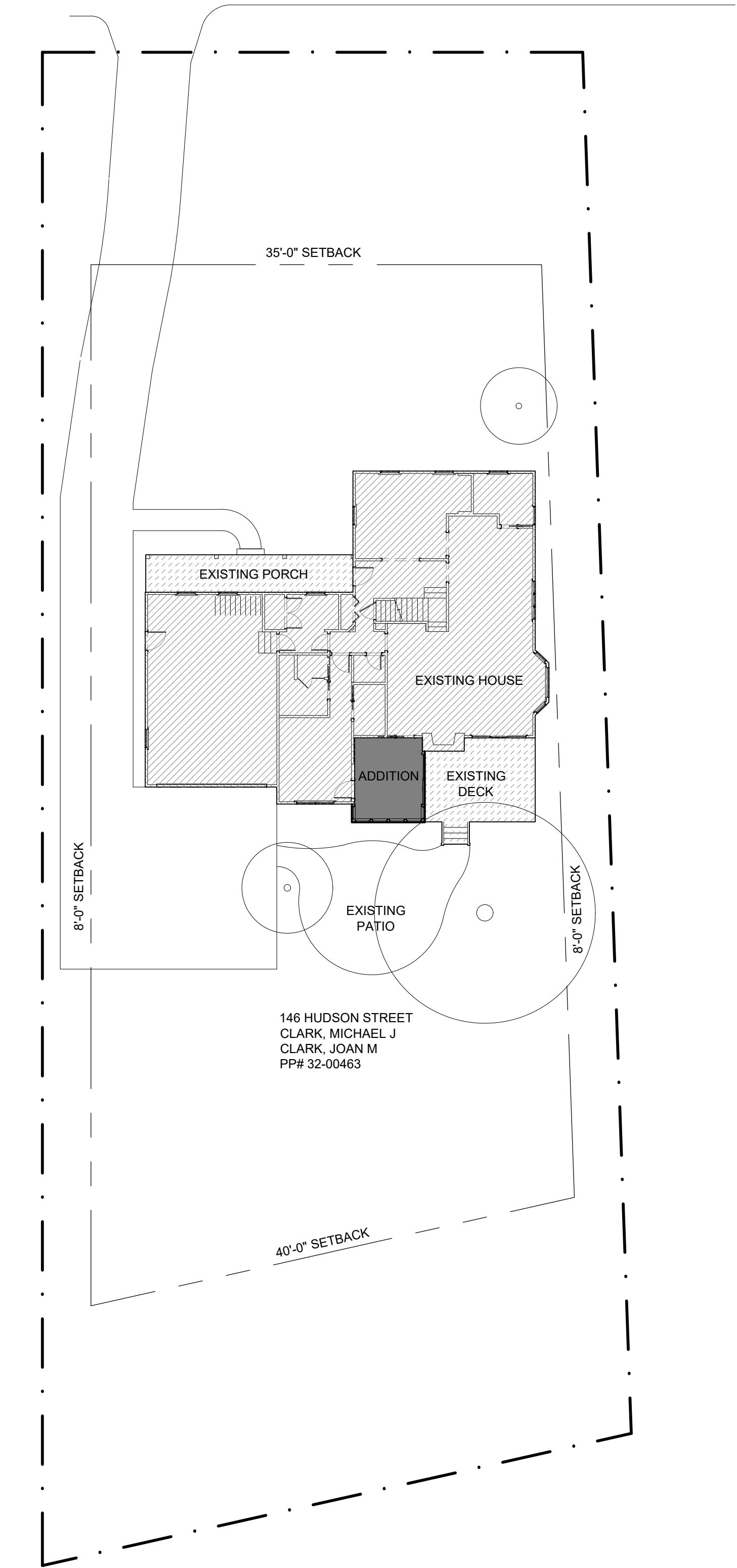
RENOVATION FOR:
CLARK RESIDENCE

146 HUDSON ST
HUDSON, OH 44236

MARK	DATE	DESCRIPTION
01	05/2024	REFINEMENT 01
02	02/2024	DETAILS 01
02	05/2024	ARB SUBMISSION 01

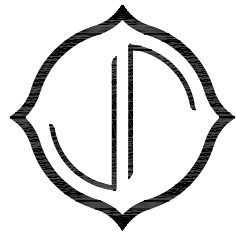
SITE PLAN - ZONING

AS-101



CLARK RESIDENCE

146 HUDSON ST
HUDSON, OH 44236

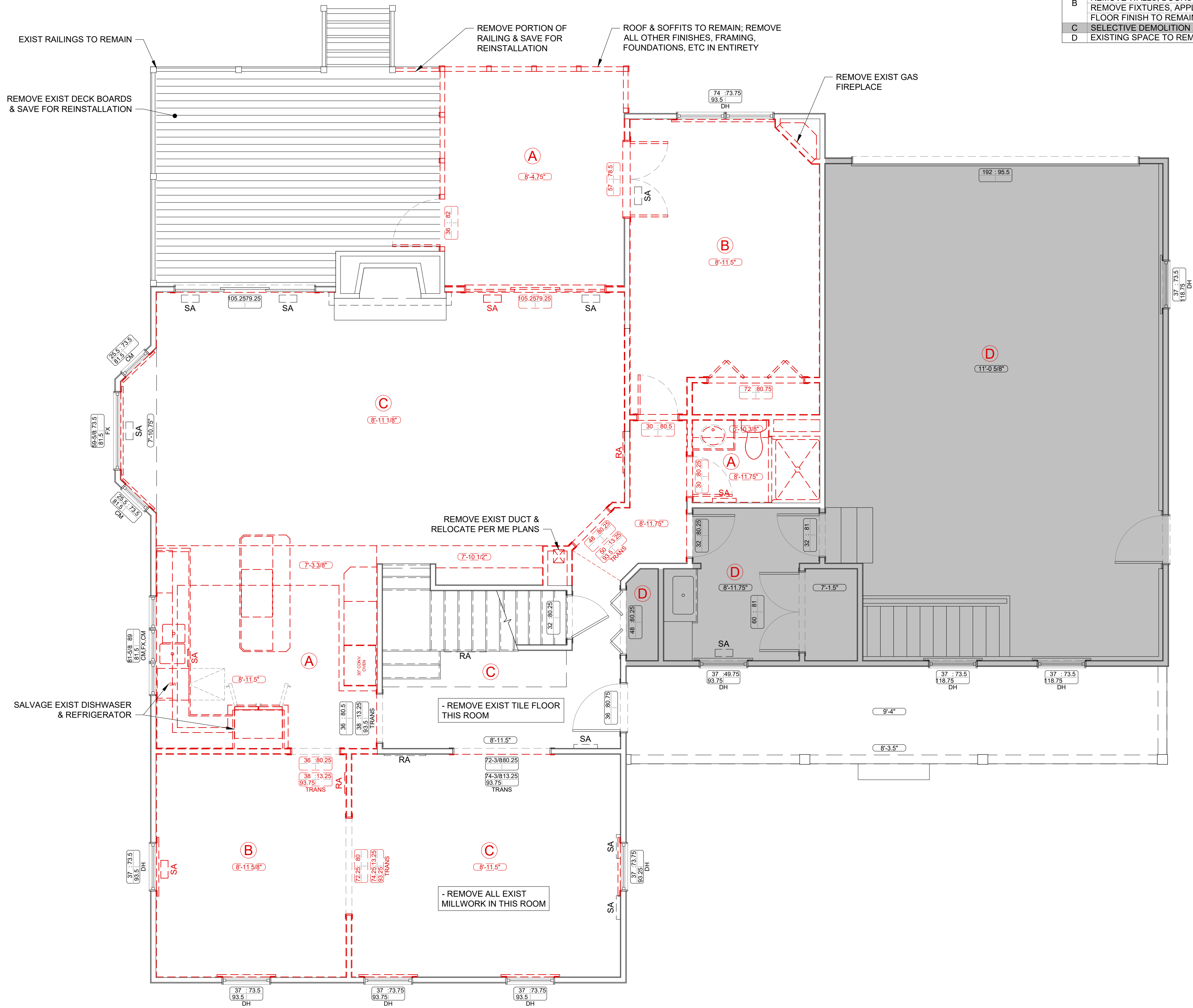


COMPASS
STUDIO

7948 Mayfield Road
Chesterland, OH 44026
440-635-0500

Joseph Park, Registered Architect
josephpark@compassstudio.com

ABBREVIATIONS		GENERAL NOTES		ZONING REVIEW		SHEET INDEX																						
<div><div>AB</div><div>ANCHOR BOLT</div></div> <div><div>ACT</div><div>ACOUSTICAL CEILING</div></div> <div><div>ADDL</div><div>ADDITIONAL</div></div> <div><div>AFF</div><div>ABOVE FINISH FLOOR</div></div> <div><div>ALUM</div><div>ALUMINUM</div></div> <div><div>ANOD</div><div>ANODIZE(D)</div></div> <div><div>APPROX</div><div>APPROXIMATE</div></div> <div><div>ARCH</div><div>ARCHITECT (URAL)</div></div> <div><div>BD</div><div>BOARD</div></div> <div><div>BFF</div><div>BELOW FINISH FLOOR</div></div> <div><div>BITUM</div><div>BITUMINOUS</div></div> <div><div>BLDG</div><div>BUILDING</div></div> <div><div>BLKG</div><div>BLOCKING</div></div> <div><div>BM</div><div>BEAM</div></div> <div><div>BOS</div><div>BOTTOM OF STEEL</div></div> <div><div>BOT</div><div>BOTTOM</div></div> <div><div>C</div><div>CHANNEL</div></div> <div><div>CB</div><div>CATCH BASIN</div></div> <div><div>CF/OI</div><div>CONTRACTOR FURNISHED; OWNER INSTALLED</div></div> <div><div>CG</div><div>CORNER GUARD</div></div> <div><div>CJ</div><div>CEILING JOISTS</div></div> <div><div>CL</div><div>CENTERLINE</div></div> <div><div>CLG</div><div>CEILING</div></div> <div><div>CLR</div><div>CLEAR</div></div> <div><div>CMU</div><div>CONCRETE MASONRY UNIT</div></div> <div><div>COL</div><div>COLUMN</div></div> <div><div>CONC</div><div>CONCRETE</div></div> <div><div>CONTR</div><div>CONTINUOUS</div></div> <div><div>CONTR</div><div>CONTRACT (OR)</div></div> <div><div>COORD</div><div>COORDINATE</div></div> <div><div>CPT</div><div>CARPET (ED)</div></div> <div><div>CT</div><div>CERAMIC TILE, COLLAR TIES</div></div> <div><div>DEMO</div><div>DEMOLISH, DEMOLITION</div></div> <div><div>DET</div><div>DETAIL</div></div> <div><div>DF</div><div>DRINKING FOUNTAIN</div></div> <div><div>DIA</div><div>DIAMETER</div></div> <div><div>DIM</div><div>DIMENSION</div></div> <div><div>DS</div><div>DOWNSPOUT</div></div> <div><div>DWG</div><div>DRAWING</div></div> <div><div>E</div><div>EAST</div></div> <div><div>EA</div><div>EACH</div></div> <div><div>EL</div><div>ELEVATION</div></div> <div><div>ELEC</div><div>ELECTRIC (AL)</div></div> <div><div>ELEV</div><div>ELEVATOR</div></div> <div><div>ENCL</div><div>ENCLOSE (URE)</div></div> <div><div>EQ</div><div>EQUAL</div></div> <div><div>EQUIP</div><div>EQUIPMENT</div></div> <div><div>EW</div><div>EACH WAY</div></div> <div><div>ETR</div><div>EXISTING TO REMAIN</div></div> <div><div>EXIST</div><div>EXISTING</div></div> <div><div>EXP</div><div>EXPANSION</div></div> <div><div>EXT</div><div>EXTERIOR</div></div> <div><div>FD</div><div>FLOOR DRAIN</div></div> <div><div>FDTM</div><div>FOUNDATION</div></div> <div><div>FEC</div><div>FIRE EXTINGUISHER CABINET</div></div> <div><div>FF</div><div>FINISH FACE</div></div> <div><div>FH</div><div>FUME HOOD</div></div> <div><div>FIN</div><div>FINISH (ED)</div></div> <div><div>FJ</div><div>FLOOR JOISTS</div></div> <div><div>FLR</div><div>FLOOR</div></div> <div><div>FOC</div><div>FACE OF CONCRETE</div></div> <div><div>FOF</div><div>FACE OF FINISH</div></div> <div><div>FOM</div><div>FACE OF MASONRY</div></div> <div><div>FOS</div><div>FACE OF STUDS</div></div> <div><div>FRMG</div><div>FRAMING</div></div> <div><div>FRTW</div><div>FIRE RETARDANT TREATED WOOD</div></div> <div><div>FT</div><div>FOOT, FEET</div></div> <div><div>FTG</div><div>FOOTING</div></div> <div><div>GA</div><div>GAGE, GYPSUM ASSOCIATION</div></div> <div><div>GALV</div><div>GALVANIZED, GALVANIC</div></div> <div><div>GAR</div><div>GARAGE</div></div> <div><div>GB</div><div>GRAB BAR</div></div> <div><div>GC</div><div>GENERAL CONTRACTOR</div></div> <div><div>GL</div><div>GLASS</div></div> <div><div>GSB</div><div>GYPSUM SHEATHING BOARD</div></div> <div><div>GYP</div><div>GYPSUM</div></div> <div><div>GYP BD</div><div>GYPSUM BOARD</div></div> <div><div>H</div><div>HIGH</div></div> <div><div>HB</div><div>HOSE BIBB</div></div> <div><div>HC</div><div>HANDICAP</div></div> <div><div>HDW</div><div>HARDWARE</div></div> <div><div>HM</div><div>HOLLOW METAL</div></div> <div><div>HORIZ</div><div>HORIZONTAL</div></div> <div><div>HT</div><div>HEIGHT</div></div> <div><div>HVAC</div><div>HEATING, VENTILATION, AIR CONDITIONING</div></div> <div><div>IBC</div><div>INTERNATIONAL BUILDING CODE</div></div> <div><div>INCL</div><div>INCLUDING (ED)</div></div> <div><div>INFO</div><div>INFORMATION</div></div> <div><div>INSUL</div><div>INSULATION</div></div> <div><div>INT</div><div>INTERIOR</div></div> <div><div>JAN</div><div>JANITOR</div></div> <div><div>LAV</div><div>LAVATORY</div></div> <div><div>MAS</div><div>MASONRY</div></div> <div><div>MATL</div><div>MATERIAL</div></div> <div><div>MAX</div><div>MAXIMUM</div></div> <div><div>MECH</div><div>MECHANICAL</div></div> <div><div>MFD</div><div>MANUFACTURED</div></div> <div><div>MFR</div><div>MANUFACTURE (R)</div></div> <div><div>MIN</div><div>MINIMUM, MINUTE</div></div> <div><div>MISC</div><div>MISCELLANEOUS</div></div> <div><div>MO</div><div>MASONRY OPENING</div></div> <div><div>MTD</div><div>MOUNTED</div></div> <div><div>MTL</div><div>METAL</div></div> <div><div>NA</div><div>NOT APPLICABLE</div></div> <div><div>NIC</div><div>NOT IN CONTRACT</div></div> <div><div>NO</div><div>NUMBER</div></div> <div><div>NOM</div><div>NOMINAL</div></div> <div><div>NTS</div><div>NOT TO SCALE</div></div> <div><div>OA</div><div>OVERALL</div></div> <div><div>OC</div><div>ON CENTER</div></div> <div><div>OD</div><div>OUTSIDE DIAMETER</div></div> <div><div>OF/OI</div><div>OWNER FURNISHED; CONTRACTOR INSTALLED</div></div> <div><div>OF/OI</div><div>OWNER FURNISHED; OWNER INSTALLED</div></div> <div><div>OH</div><div>OVERHANG</div></div> <div><div>OPH</div><div>OPPOSITE HAND</div></div> <div><div>OPNG</div><div>OPENING</div></div> <div><div>OPP</div><div>OPPOSITE</div></div> <div><div>ORD</div><div>OVERFLOW ROOF DRAIN</div></div> <div><div>OVHD</div><div>OVERHEAD</div></div> <div><div>PL</div><div>PROPERTY LINE</div></div> <div><div>PLAM</div><div>PLASTIC LAMINATE</div></div> <div><div>PLYWD</div><div>PLYWOOD</div></div> <div><div>PT</div><div>PART, PRESSURE TREATED</div></div> <div><div>PVG</div><div>PAVING</div></div> <div><div>R</div><div>RADIUS, RISER, RAFTERS</div></div> <div><div>RB</div><div>RUBBER/RESILIENT BASE</div></div> <div><div>RCP</div><div>REFLECTED CEILING PLAN</div></div> <div><div>RD</div><div>ROOF DRAIN, ROAD</div></div> <div><div>REQD</div><div>REQUIRED</div></div> <div><div>RM</div><div>ROOM</div></div> <div><div>RO</div><div>ROUGH OPENING</div></div> <div><div>S</div><div>SOUTH</div></div> <div><div>SCHED</div><div>SCHEDULE</div></div> <div><div>SF</div><div>SQUARE FOOT (FEET)</div></div> <div><div>SHT</div><div>SHEET</div></div> <div><div>SHTHG</div><div>SHEATHING</div></div> <div><div>SIM</div><div>SIMILAR</div></div> <div><div>SPKLR</div><div>SPRINKLER</div></div> <div><div>SQ</div><div>SQUARE</div></div> <div><div>SS</div><div>SANITARY SEWER, SEAM STANDING</div></div> <div><div>SST</div><div>STAINLESS STEEL</div></div> <div><div>ST</div><div>STAIRS, STREET</div></div> <div><div>STD</div><div>STANDARD</div></div> <div><div>STOR</div><div>STORAGE</div></div> <div><div>STRUCT</div><div>STRUCTURE (AL)</div></div> <div><div>SUSP</div><div>SUSPEND(ED)</div></div> <div><div>SV</div><div>SHEET VINYL</div></div> <div><div>T</div><div>TREAD</div></div> <div><div>TB</div><div>TACK BOARD</div></div> <div><div>TFF</div><div>TOP OF FINISH FLOOR</div></div> <div><div>THRU</div><div>THROUGH</div></div> <div><div>TMPD</div><div>TEMPERED</div></div> <div><div>TOM</div><div>TOP OF MASONRY</div></div> <div><div>TYP</div><div>TYPICAL</div></div> <div><div>UOM</div><div>UNLESS OTHERWISE NOTED</div></div> <div><div>UTIL</div><div>UTILITY</div></div> <div><div>VEH</div><div>VEHICLE</div></div> <div><div>VERT</div><div>VERTICAL</div></div> <div><div>VIF</div><div>VERIFY IN FIELD</div></div> <div><div>VRFY</div><div>VERIFY</div></div> <div><div>W/</div><div>WITH</div></div> <div><div>W</div><div>WEST, WIDE</div></div> <div><div>W/O</div><div>WITHOUT</div></div> <div><div>WC</div><div>WATER CLOSET</div></div> <div><div>WD</div><div>WOOD, WOOD DOOR</div></div> <div><div>WDW</div><div>WINDOW</div></div> <div><div>WR</div><div>WEATHER RESISTANT, WATER REPELLENT</div></div> <div><div>WSCT</div><div>WAINSCOT</div></div>		<div><div>1.</div><div>COMPLY WITH APPLICABLE CODES AND ORDINANCES IN FORCE AT TIME OF BUILDING PERMIT ISSUANCE.</div></div> <div><div>2.</div><div>READ, UNDERSTAND AND COMPLY WITH ALL APPLICABLE PROVISIONS OF THE CONSTRUCTION DOCUMENTS FOR THE PROJECT.</div></div> <div><div>3.</div><div>UNLESS OTHERWISE NOTED, PLAN DIMENSIONS SHOWN ARE:<div><div>A.</div><div>AT INTERIOR PARTITIONS: TO THE FACE OF FINISHED WALL MATERIAL</div></div><div><div>B.</div><div>AT COLUMNS: TO THE CENTERLINE OF COLUMNS</div></div><div><div>C.</div><div>AT CONCRETE OR CMU: TO THE FACE OF CONCRETE OR CMU</div></div><div><div>D.</div><div>AT FRAMING PLANS: TO THE OUTSIDE FACE OF ROUGH FRAMING (INCLUDING SHEATHING FOR EXTERIOR WALLS)</div></div></div></div> <div><div>4.</div><div>PLACE DOORS NOT LOCATED BY DIMENSION ON PLANS 6" FROM FACE OF ADJOINING PARTITION TO HINGE EDGE OF DOOR OPENING. CLOSET DOORS TO BE CENTERED IN CLOSET UNLESS NOTED OTHERWISE. PROVIDE 18" MINIMUM CLEAR FROM FACE OF ADJOINING PARTITION OR OTHER OBSTRUCTION TO STRIKE JAMB EDGE OF DOOR OPENING, UNLESS OTHERWISE NOTED. NOTIFY ARCHITECT IF REQUIRED CLEARANCES ARE NOT AVAILABLE.</div></div> <div><div>5.</div><div>PROVIDE FIRE RESISTANT CLOSURE MEETING THE REQUIREMENTS OF THE GOVERNING FIRE AUTHORITIES AT ALL GAPS AROUND PENETRATING DUCTS, PIPES, CONDUITS, ETC. AT ALL FIRE RATED BUILDING WALLS, PARTITIONS, CEILINGS, FLOORS AND ROOFS. FIRE BLOCKING SHALL BE PROVIDED TO CUT OFF ALL CONCEALED DRAFT OPENINGS (VERTICAL & HORIZONTAL) AND TO FORM AN EFFECTIVE FIRE BARRIER BETWEEN STORIES AND BETWEEN STORIES AND ROOF.</div></div> <div><div>6.</div><div>ROOM AND DOOR NUMBERS SHOWN ON DRAWINGS ARE FOR CONSTRUCTION PURPOSES ONLY.</div></div> <div><div>7.</div><div>CONCEAL ALL PIPING, CONDUITS, DUCTS, ETC INSIDE WALLS AND ABOVE CEILINGS AT ALL ROOMS EXCEPT ELECTRICAL AND TELEPHONE CLOSETS AND MECHANICAL ROOMS. IN SPACES OPEN TO STRUCTURE, ONLY PIPING CONDUITS AND DUCTS THAT SERVE THE SPACE MAY BE EXPOSED. LOCATE SUCH INSTALLATIONS TO MINIMIZE VISIBILITY AND ORGANIZE TO MINIMIZE RUN LENGTHS AND OVERLAPPING. ARCHITECT TO REVIEW SHOP DRAWINGS FOR EXPOSED MECHANICAL, ELECTRICAL, PLUMBING ITEMS PRIOR TO FABRICATION AND INSTALLATION.</div></div> <div><div>8.</div><div>COORDINATE WORK WITH ALL OWNER FURNISHED ITEMS AND PROVIDE ALL REQUIRED MECHANICAL AND ELECTRICAL CONNECTIONS INCLUDING STUB OUTS.</div></div> <div><div>9.</div><div>VERIFY ALL DIMENSIONS, EXISTING AND NEW CONDITIONS ON THE JOB BEFORE PROCEEDING WITH THE WORK.</div></div> <div><div>10.</div><div>NOTIFY THE ARCHITECT OF ANY DISCREPANCIES NOTED AMONG OR BETWEEN THE CONTRACT DOCUMENTS, OWNER-PROVIDED INFORMATION, SITE CONDITIONS, MANUFACTURER RECOMMENDATIONS, OR CODES, REGULATIONS, OR RULES OF JURISDICTIONS HAVING AUTHORITY PRIOR TO COMMENCEMENT OF ANY PORTION OF THE WORK.</div></div> <div><div>11.</div><div>THE CONTRACT DOCUMENTS ARE COMPLIMENTARY AND WHAT IS REQUIRED BY ONE IS BINDING AS IF REQUIRED BY ALL.</div></div> <div><div>12.</div><div>PROVIDE REPETITIVE FEATURES NOT INDICATED IN THE DRAWINGS EVERYWHERE THAT THEY OCCUR AS IF DRAWN IN FULL. NOT ALL OCCURRENCES OF A FEATURE ARE NOTED IN EVERY CASE.</div></div> <div><div>13.</div><div>CONSULT WORK OF ALL TRADES FOR ALL OPENINGS AND ROUGH-CUTS THROUGH SLABS, WALLS, CEILINGS AND ROOFS FOR DUCTS, PIPES, CONDUITS, CABINETS AND EQUIPMENT, AND VERIFY SIZE AND LOCATION BEFORE PROCEEDING WITH WORK.</div></div> <div><div>14.</div><div>VERIFY ALL ROUGH-IN DIMENSIONS REQUIRED FOR EQUIPMENT, INCLUDING THAT FURNISHED BY OTHERS, PRIOR TO PROCEEDING WITH WORK.</div></div> <div><div>15.</div><div>DO NOT TAKE ROOM FINISH PLAN(S) AS A COMPLETE SPECIFICATION FOR ALL INTERIOR ROOM MATERIALS. HOWEVER, THEY ARE BINDING TO THE EXTENT OF THE MATERIAL THEY DO SPECIFY. CROSS-CHECK THE ROOM FINISH PLAN(S) WITH ROOM FINISH SCHEDULES, SPECIFICATIONS AND OTHER DRAWINGS FOR OTHER MATERIALS AND REQUIREMENTS NOT COVERED BY THE ROOM FINISH PLAN(S).</div></div> <div><div>16.</div><div>COORDINATE WITH MECHANICAL AND ELECTRICAL CONTRACTORS FOR EXACT LOCATIONS, TYPES AND SIZES OF ACCESS DOORS REQUIRED BY THEIR WORK. PROVIDED ACCESS FOR ALL CONCEALED VALVES, DAMPER CONTROLS, FIRE DAMPER LINKAGE, ELECTRICAL JUNCTION BOXES, ETC. DRAWINGS MAY NOT SHOW ALL REQUIRED ACCESS PANELS. INDICATE REQUIRED ACCESS DOORS ON THE COORDINATION DRAWINGS. OBTAIN ARCHITECT'S APPROVAL FOR LOCATIONS OF ACCESS DOORS PRIOR TO INSTALLATION.</div></div> <div><div>17.</div><div>PRESERVATIVE TREAT ALL WOOD IN CONTACT WITH CONCRETE OR MASONRY AS REQUIRED BY CODE.</div></div> <div><div>18.</div><div>DO NOT SCALE DRAWINGS.</div></div> <div><div>19.</div><div>CONSTRUCT RECESSES LOCATED WITHIN FIRE RATED PARTITIONS TO MAINTAIN THE REQUIRED FIRE RATING OF THE PARTITION.</div></div> <div><div>20.</div><div>SITE SURVEY, GEOTECHNICAL INVESTIGATION, AND HAZARDOUS MATERIALS DOCUMENTATION WAS PREPARED BY CONSULTANTS TO THE OWNER AND NOT UNDER THE DIRECTION OF THE ARCHITECT. THIS DOCUMENTATION IS INCLUDED IN THE CONTRACT DOCUMENTS AS AN ACCOMMODATION TO THE OWNER.</div></div> <div><div>21.</div><div>REFER TO DOCUMENTS FOR GENERAL LOCATIONS OF VISIBLE EQUIPMENT, SIGNAL DEVICES, SIGNAGE, AND OTHER VISIBLE ITEMS. CONSULT WITH ARCHITECT FOR EXACT MOUNTING LOCATION.</div></div> <div><div>22.</div><div>REPAIR / PATCH / OR REINSTALL CEILINGS & WALLS REMOVED FOR MECHANICAL AND ELECTRICAL WORK ON THE FLOORS BELOW AND IN OTHER AREAS OF THE BUILDING BEYOND THE AREAS INDICATED.</div></div> <div><div>23.</div><div>IN GENERAL, NEW FINISHED FLOOR ELEVATIONS ARE TO ALIGN WITH EXISTING FINISHED FLOOR ELEVATIONS. THE FLOOR ELEVATIONS INDICATED ARE APPROXIMATE. CONTRACTOR TO VERIFY THE EXISTING ABUTTING FLOOR ELEVATIONS AND ADJUST THE NEW ELEVATIONS INDICATED AS NECESSARY. NOTIFY THE ARCHITECT WHERE DEVIATIONS EXCEEDING 1/2" ARE ENCOUNTERED.</div></div>		<div><div>DEMOLITION:</div><div><div>1.</div><div>SEE FLOOR PLANS FOR EXTENT OF DEMOLITION. COORDINATE DIMENSIONS OF OPENINGS ON PLANS W/ AREAS TO BE DEMOLISHED. SHORE UP ALL STRUCTURAL ELEMENTS BEFORE DEMOLISHING OR REMOVING EQUIPMENT, WALLS, ETC. TO ASSURE A SAFE WORKPLACE.</div></div><div><div>2.</div><div>PROTECT INTERIOR OF BUILDING FROM WEATHER DAMAGE DURING AND AFTER DEMOLITION HAS BEEN COMPLETED. DO NOT REMOVE OR CUT ANY PORTION OF THE STRUCTURE WHICH WOULD RENDER THE BUILDING STRUCTURALLY UNSAFE. CONSULT THE ARCHITECT.</div></div><div><div>3.</div><div>ALL SHORING TO REMAIN IN PLACE UNTIL NEW STRUCTURE IS IN PLACE.</div></div><div><div>4.</div><div>REMOVE ALL ELECTRICAL WIRING ASSOCIATED WITH DEMOLISHED WALLS IF ANY IS ENCOUNTERED. DO NOT ALLOW WIRING TO REMAIN LOOSE OR EXPOSED. INCORPORATE WIRING INTO NEW SYSTEM WHERE POSSIBLE.</div></div><div><div>5.</div><div>ALL WALLS OR ELEMENTS TO BE DEMOLISHED ARE SHOWN WITH A DASHED LINE.</div></div><div><div>6.</div><div>NOTIFY ARCHITECT OF UNFORESEEN CONDITIONS BEFORE PROCEEDING WITH THE WORK.</div></div><div><div>7.</div><div>PLUMBING, ELECTRICAL, AND HVAC CONTRACTORS TO REMOVE AND RELOCATE ALL ITEMS INCLUDING BUT NOT LIMITED TO: CONDUIT, WIRING, DUCTS, PIPING, AND EQUIPMENT WHICH ARE TO BE REUSED AND THAT INTERFERE WITH OR ARE IN THE AREA OF THE DEMOLITION. CUT AND PATCH ALL FLOORS / WALLS, ETC. AS REQUIRED FOR INSTALLATION OF NEW WORK.</div></div><div><div>8.</div><div>SEAL OPENINGS WEATHER TIGHT IN EXTERIOR WALLS AND ROOF UNTIL NEW CONSTRUCTION IS IN PLACE.</div></div><div><div>9.</div><div>REMOVE ALL BASE & SHOE & PLINTH MOLDING AT ANY LOCATIONS WHERE REMOVAL OF EXISTING TILE OR HARDWOOD FLOORING IS INDICATED ON THE PLANS.</div></div></div> <div><div>WALL & PARTITION:</div><div><div>1.</div><div>FINISH ALL WALLS & PARTITIONS W/ 5/8" GYPSUM BOARD UNLESS NOTED OTHERWISE.</div></div><div><div>2.</div><div>INSTALL 5/8" GREEN BOARD AT ALL BATHROOMS.</div></div><div><div>3.</div><div>INSTALL 1/2" CEMENT BOARD AT ALL TILE LOCATIONS.</div></div><div><div>4.</div><div>INSTALL SOUND ATTENUATION BATT. INSULATION AT ALL LAUNDRY AND BATH ROOM WALLS.</div></div></div> <div><div>TEMPERED GLAZING:</div><div><div>1.</div><div>ALL GLAZING IN THE FOLLOWING LOCATIONS SHALL BE TEMPERED:<div><div>A.</div><div>GLAZING IN SWINGING, SLIDING OR FIXED DOORS, INCLUDING FIXED PANELS AND SIDE LITES.</div></div><div><div>B.</div><div>GLAZING FOR DOORS AND SURROUNDS OF WHIRLPOOLS, TUBS AND SHOWERS.</div></div><div><div>C.</div><div>GLAZING WITHIN 24" OF ANY DOOR IN THE CLOSED POSITION.</div></div><div><div>D.</div><div>GLAZING WITHIN 18" OF THE FINISH FLOOR.</div></div><div><div>E.</div><div>GLAZING ADJACENT TO TUBS AND SHOWERS.</div></div></div></div><div><div>STAIR:</div><div><div>1.</div><div>HANDRAILS SHALL HAVE A HEIGHT OF 34" - 38" AND SHALL RUN CONTINUOUS THE FULL LENGTH OF THE STAIRS, AND SHALL EXTEND 6" BEYOND THE TOP AND BOTTOM RISER. HANDRAIL ENDS SHALL BE RETURNED OR SHALL TERMINATE INTO A NEWEL POST. HANDRAILS PROJECTING FROM A WALL SHALL HAVE A SPACE OF NOT LESS THAN 1 1/2" BETWEEN THE WALL AND THE HANDRAIL. ANY OPEN SIDES SHALL HAVE BALUSTERS WITH LESS THAN 4" CLEAR SPACE BETWEEN.</div></div><div><div>2.</div><div>MAXIMUM RISER HEIGHT TO BE 8 1/4". THE RISER SHALL BE MEASURED VERTICALLY BETWEEN LANDING EDGES OF THE ADJACENT TREADS. THE GREATEST RISER HEIGHT WITHIN ANY FLIGHT OF STAIRS SHALL NOT EXCEED THE SMALLEST BY MORE THAN 3/8".</div></div><div><div>3.</div><div>MINIMUM TREAD DEPTH TO BE 9". THE TREAD DEPTH SHALL BE MEASURED HORIZONTALLY BETWEEN THE VERTICAL PLANES OF THE FOREMOST PROJECTION OF ADJACENT TREADS AND AT A RIGHT ANGLE TO THE TREAD'S LEADING EDGE. THE GREATEST TREAD DEPTH WITHIN ANY FLIGHT OF STAIRS SHALL NOT EXCEED THE SMALLEST BY MORE THAN 3/8".</div></div><div><div>4.</div><div>ALL NOSING TO BE A 1" PROTRUSION. THE RADIUS OF THE CURVATURE OF THE LEADING EDGE OF THE TREAD SHALL BE NO GREATER THAN 9/16". A NOSING NOT LESS THAN 3/4" BUT NOT MORE THAN 1 1/4" SHALL BE PROVIDED ON STAIRWAYS WITH SOLID RISERS. THE GREATEST NOSING PROJECTION SHALL NOT EXCEED THE SMALLEST BY MORE THAN 3/8" BETWEEN TWO STORIES, INCLUDING THE NOSING AT THE FLOORS AND LANDINGS. BEVELING OF NOSING SHALL NOT EXCEED 1/2". RISERS SHALL BE VERTICAL OR SLOPED FROM THE UNDERSIDE OF THE LEADING EDGE OF THE TREAD ABOVE AT AN ANGLE NOT MORE THAN 30 DEGREES FROM THE VERTICAL. OPEN RISERS ARE PERMITTED, PROVIDED THAT THE OPENING BETWEEN THE TREADS DOES NOT PERMIT THE PASSAGE OF A 4-INCH DIAMETER SPHERE.</div></div><div><div>5.</div><div>ALL INTERIOR AND EXTERIOR STAIRWAYS SHALL BE PROVIDED WITH A MEANS TO ILLUMINATE THE STAIR, INCLUDING THE LANDINGS AND TREADS. INTERIOR STAIRWAYS SHALL BE PROVIDED WITH AN ARTIFICIAL LIGHT SOURCE LOCATED IN THE IMMEDIATE VICINITY OF EACH LANDING IN THE STAIRWAY. FOR INTERIOR STAIRS THE ARTIFICIAL LIGHT SOURCES SHALL BE CAPABLE OF ILLUMINATING TREADS AND LANDINGS TO LEVELS NOT LESS THAN 1 FOOT-CANDELS (11 LUX) MEASURED AT THE CENTER OF THE TREADS AND LANDINGS. EXTERIOR STAIRWAYS SHALL BE PROVIDED WITH AN ARTIFICIAL LIGHT SOURCE LOCATED IN THE IMMEDIATE VICINITY OF THE TOP LANDING OF THE STAIRWAY. EXTERIOR STAIRWAYS PROVIDING ACCESS TO A BASEMENT FROM THE OUTSIDE GRADE LEVEL SHALL BE PROVIDED WITH AN ARTIFICIAL LIGHT SOURCE LOCATED IN THE IMMEDIATE VICINITY OF THE BOTTOM LANDING OF THE STAIRWAY. FOR UNDERSIDE OF STAIR STORAGE, PROVIDE FIRE-STOPPING AT TOP AND BOTTOM OF STAIR STRINGER AND COMPLETELY DRYWALL THE UNDERSIDE WITH TYPE-X GYPSUM WALL BOARD.</div></div></div><div><div>ROOF:</div><div><div>1.</div><div>CONTRACTOR TO DETERMINE THE NUMBER, SIZE AND LOCATION OF DOWNSPOUTS PER APPLICABLE CODES FOR PROPER ROOF DRAINAGE.</div></div><div><div>2.</div><div>PROVIDE CRICKETS AS NECESSARY FOR PROPER WATER DRAINAGE.</div></div><div><div>3.</div><div>INSTALL ICE & WATER SHIELD AT:<div><div>A.</div><div>ALL VALLEYS AND ROOF PENETRATIONS.</div></div><div><div>B.</div><div>6'-0" HORIZONTALLY EXTENDING FROM THE BOTTOM EDGE OF THE ROOF.</div></div><div><div>C.</div><div>WHERE ROOF PLANES INTERSECT VERTICAL WALLS (18" MIN. UP WALL AND ONTO ROOF).</div></div><div><div>D.</div><div>AT ALL ROOF AREAS WITH A PITCH LESS THAN 3.5:12.</div></div></div></div><div><div>ATTIC VENTILATION:</div><div><div>1.</div><div>ENCLOSED ATTICS AND ENCLOSED RAFTER SPACES FORMED WHERE CEILINGS ARE APPLIED DIRECTLY TO THE UNDERSIDE OF ROOF RAFTERS SHALL HAVE CROSS VENTILATION FOR EACH SEPARATE SPACE BY VENTILATING OPENINGS PROTECTED FROM THE ENTRANCE OF RAIN OR SNOW. THE NET FREE VENTILATING AREA SHALL NOT BE LESS THAN 1 TO 150 OF THE AREA OF SPACE VENTILATED EXCEPT THAT THE AREA MAY BE 1 TO 300, PROVIDED AT LEAST 50% OF THE REQUIRED VENTILATING AREA IS PROVIDED WITH VENTILATORS LOCATED IN THE UPPER PORTION OF THE SPACE TO BE VENTILATED AT LEAST 3 FEET ABOVE EAVE OR CORNICE VENTS. THE NET FREE CROSS VENTILATION AREA MAY NOT BE LESS THAN 1 TO 300 OF THE AREA OF THE SPACE VENTILATED WHEN THE VAPOR BARRIER HAVING A TRANSMISSION RATE NOT EXCEEDING 1 PERM IS INSTALLED ON THE WARM SIDE OF THE CEILING.</div></div></div><div><div>ELECTRICAL:</div><div><div>1.</div><div>ALL SWITCHES TO BE DIMMER STYLE EXCEPT AT SHOWER LIGHTS & FANS.</div></div><div><div>2.</div><div>SMOKE DETECTORS SHALL BE INSTALLED INSIDE EACH BEDROOM, OUTSIDE EACH SEPARATE SLEEPING AREA IN THE IMMEDIATE VICINITY OF THE BEDROOMS AND ON EACH FLOOR, INCLUDING THE BASEMENT. THE SMOKE DETECTORS SHALL BE HARD WIRED W/ BATTERY BACK-UP AND CONNECTED TOGETHER. ALL SMOKE DETECTORS TO USE IONIZATION AND PHOTOELECTRIC TECHNOLOGY. COORDINATE LOCATIONS WITH THE OWNER FOR APPROVAL.</div></div><div><div>3.</div><div>CARBON MONOXIDE ALARMS SHALL BE INSTALLED OUTSIDE OF EACH SEPARATE SLEEPING AREA IN THE IMMEDIATE VICINITY OF THE BEDROOMS IN DWELLING UNITS WITHIN WHICH FUEL-FIRED APPLIANCES ARE INSTALLED AND IN DWELLING UNITS THAT HAVE ATTACHED GARAGES. COORDINATE LOCATIONS WITH THE OWNER FOR APPROVAL.</div></div><div><div>4.</div><div>EXISTING ELECTRICAL SYSTEM TO REMAIN. REPLACE CIRCUITS AND RUNS AS NEEDED FOR RENOVATION.</div></div><div><div>5.</div><div>RECEPTACLES SHALL BE INSTALLED SUCH THAT NO POINT MEASURED HORIZONTALLY ALONG THE FLOOR LINE OF ANY WALL SPACE IS MORE THAN 6' FROM A RECEPTACLE OUTLET.</div></div><div><div>6.</div><div>A RECEPTACLE OUTLET SHALL BE INSTALLED AT EACH WALL COUNTERTOP AND WORK SURFACE THAT IS 12" OR WIDER. RECEPTACLE OUTLETS SHALL BE INSTALLED SO THAT NO POINT ALONG THE WALL LINE IS MORE THAN 24" MEASURED HORIZONTALLY FROM A RECEPTACLE OUTLET IN THAT SPACE.</div></div></div><div><div>LIGHTING LAYOUT:</div><div><div>1.</div><div>SINGLE LIGHT FIXTURES INSTALLED IN SPACES SUCH AS PANTRIES, CLOSETS, ALCOVES & SHOWERS ARE TO BE CENTERED WITHIN THE SPACE UNLESS NOTED OTHERWISE.</div></div><div><div>2.</div><div>UNDER CABINET LIGHTING TO BE INSTALLED PER MANUFACTURERS WRITTEN INSTRUCTIONS, AND TOWARD THE FRONT OF THE CABINET FACE, IN SUCH A MANNER THAT THE FIXTURE ITSELF IS NOT VISIBLE FROM PLAIN VIEW.</div></div><div><div>3.</div><div>VANITY LIGHTING SHALL BE LOCATED IN THE FIELD BASED ON INDIVIDUAL FIXTURE SIZES FEATURES & MOUNTING REQUIREMENTS.</div></div><div><div>4.</div><div>ALL LIGHTING & SWITCH LOCATIONS TO BE APPROVED BY OWNER PRIOR TO FINAL INSTALLATION.</div></div></div><div><div>MECHANICAL:</div><div><div>1.</div><div>MECHANICAL CONTRACTOR TO DESIGN HEATING/COOLING SYSTEM FOR RENOVATION. REVIEW LOCATIONS OF ALL NEW/RELOCATED EQUIPMENT AND REGISTERS IN FIELD WITH OWNER.</div></div><div><div>2.</div><div>THE MECHANICAL CONTRACTOR IS TO VERIFY UPDATES TO THE BATH FANS & KITCHEN HOOD WILL MAINTAIN NEGATIVE PRESSURE WHILE THESE APPLIANCES ARE ACTIVATED.</div></div><div><div>3.</div><div>HVAC CONTRACTOR TO FURNISH AND INSTALL AUTOMATIC MAKEUP AIR SYSTEM - ACCOMMODATES HOODS OPERATING OVER 400 CFM. FIELD VERIFY LOCATION OF UNIT AND VENTS, COORDINATE WITH ARCHITECT AND HOMEOWNER.</div></div></div><div><div>PLUMBING:</div><div><div>1.</div><div>ALL WASTE STACKS SHALL BE PVC PIPING. ALL WALL, FLOOR & CEILING CAVITIES BETWEEN THE STUDS & JOISTS WHERE THESE STACKS & VENTS OCCUR SHALL BE INSULATED WITH SOUND ATTENUATION BATTS.</div></div></div></div></div>		<div><div>ZONING CLASSIFICATION OF SITE: 4 - HISTORIC RESIDENTIAL NEIGHBORHOOD</div><div></div></div>	<table><tr><th>DWG #</th><th>SHEET NAME</th><th>ISSUE</th></tr><tr><td>T-001</td><td>GENERAL INFORMATION / DRAWING INDEX</td><td></td></tr><tr><td>T-002</td><td>CONTEXT PHOTOS</td><td></td></tr><tr><td>AS-101</td><td>SITE PLAN - ZONING</td><td></td></tr><tr><td>D-111</td><td>FIRST FLOOR DEMOLITION PLAN</td><td></td></tr><tr><td>A-111</td><td>FIRST FLOOR PLAN</td><td></td></tr><tr><td>A-201</td><td>EXTERIOR ELEVATIONS</td><td></td></tr></table>	DWG #	SHEET NAME	ISSUE	T-001	GENERAL INFORMATION / DRAWING INDEX		T-002	CONTEXT PHOTOS		AS-101	SITE PLAN - ZONING		D-111	FIRST FLOOR DEMOLITION PLAN		A-111	FIRST FLOOR PLAN		A-201	EXTERIOR ELEVATIONS	
DWG #	SHEET NAME	ISSUE																										
T-001	GENERAL INFORMATION / DRAWING INDEX																											
T-002	CONTEXT PHOTOS																											
AS-101	SITE PLAN - ZONING																											
D-111	FIRST FLOOR DEMOLITION PLAN																											
A-111	FIRST FLOOR PLAN																											
A-201	EXTERIOR ELEVATIONS																											
				LOCATION MAP																								
					PROJECT TEAM																							
				<p>OWNER: MIKE & JILL CLARK 146 HUDSON ST HUDSON, OH 44236</p> <p>ARCHITECT: JOSEPH PARK COMPASS STUDIO CHESTERLAND, OHIO 44026 PHONE: 440.635.0500 EMAIL: JOSEPHPARK@COMPASSSTUDIO.COM</p> <p>CONTRACTOR: COMPASS STUDIO 7948 MAYFIELD ROAD CHESTERLAND, OH 44026</p>																								
					PROJECT INFORMATION																							
				PROJECT DESCRIPTION: FIRST FLOOR RENNOVATION																								
				SYMBOLS																								
				<div><div></div><div>NOT IN CONTRACT. NO WORK THIS AREA. PROTECT AS REQUIRED.</div></div> <div><div></div><div>INTERIOR ELEVATION TAG</div></div> <div><div></div><div>SECTION DETAIL</div></div> <div><div></div><div>DOOR TAGS</div></div> <div><div></div><div>WINDOW TAGS</div></div> <div><div></div><div>EXISTING WALL</div></div> <div><div></div><div>DEMOLISHED WALL</div></div> <div><div></div><div>NEW STUD WALL</div></div> <div><div></div><div>NEW MASONRY WALL</div></div> <div><div></div><div>OVERBUILT ROOF FRAMING</div></div> <div><div></div><div>STEEL OR WOOD BEAM / HEADER</div></div> <div><div></div><div>S.B. SOLID BEARING DOWN TO FOUNDATION</div></div> <div><div></div><div>S.B. SOLID BEARING ABOVE</div></div>																								
				RENOVATION FOR: CLARK RESIDENCE 146 HUDSON ST HUDSON, OH 44236																								
				PRELIMINARY NOT FOR CONSTRUCTION																								
					GENERAL INFORMATION DRAWING INDEX																							
					T-001																							



DEMOLITION NOTES	
TAG	SCOPE
A	REMOVE WALL + CEILING FINISH DOWN TO FRAMING
	REMOVE WALLS, DOORS + WINDOWS AS SHOWN
	REMOVE FIXTURES, APPLIANCES, CABINETRY + COUNTERTOPS
B	REMOVE WALL + CEILING FINISH DOWN TO FRAMING
	REMOVE WALLS, DOORS + WINDOWS AS SHOWN
	REMOVE FIXTURES, APPLIANCES, CABINETRY + COUNTERTOPS
C	REMOVE WALL + CEILING FINISH DOWN TO FRAMING
	REMOVE WALLS, DOORS + WINDOWS AS SHOWN
D	REMOVE WALL + CEILING FINISH DOWN TO FRAMING
	REMOVE WALLS, DOORS + WINDOWS AS SHOWN
E	REMOVE WALL + CEILING FINISH DOWN TO FRAMING
	REMOVE WALLS, DOORS + WINDOWS AS SHOWN
F	REMOVE WALL + CEILING FINISH DOWN TO FRAMING
	REMOVE WALLS, DOORS + WINDOWS AS SHOWN
G	REMOVE WALL + CEILING FINISH DOWN TO FRAMING
	REMOVE WALLS, DOORS + WINDOWS AS SHOWN
H	REMOVE WALL + CEILING FINISH DOWN TO FRAMING
	REMOVE WALLS, DOORS + WINDOWS AS SHOWN
I	REMOVE WALL + CEILING FINISH DOWN TO FRAMING
	REMOVE WALLS, DOORS + WINDOWS AS SHOWN
J	REMOVE WALL + CEILING FINISH DOWN TO FRAMING
	REMOVE WALLS, DOORS + WINDOWS AS SHOWN
K	REMOVE WALL + CEILING FINISH DOWN TO FRAMING
	REMOVE WALLS, DOORS + WINDOWS AS SHOWN
L	REMOVE WALL + CEILING FINISH DOWN TO FRAMING
	REMOVE WALLS, DOORS + WINDOWS AS SHOWN
M	REMOVE WALL + CEILING FINISH DOWN TO FRAMING
	REMOVE WALLS, DOORS + WINDOWS AS SHOWN
N	REMOVE WALL + CEILING FINISH DOWN TO FRAMING
	REMOVE WALLS, DOORS + WINDOWS AS SHOWN
O	REMOVE WALL + CEILING FINISH DOWN TO FRAMING
	REMOVE WALLS, DOORS + WINDOWS AS SHOWN
P	REMOVE WALL + CEILING FINISH DOWN TO FRAMING
	REMOVE WALLS, DOORS + WINDOWS AS SHOWN
Q	REMOVE WALL + CEILING FINISH DOWN TO FRAMING
	REMOVE WALLS, DOORS + WINDOWS AS SHOWN
R	REMOVE WALL + CEILING FINISH DOWN TO FRAMING
	REMOVE WALLS, DOORS + WINDOWS AS SHOWN
S	REMOVE WALL + CEILING FINISH DOWN TO FRAMING
	REMOVE WALLS, DOORS + WINDOWS AS SHOWN
T	REMOVE WALL + CEILING FINISH DOWN TO FRAMING
	REMOVE WALLS, DOORS + WINDOWS AS SHOWN
U	REMOVE WALL + CEILING FINISH DOWN TO FRAMING
	REMOVE WALLS, DOORS + WINDOWS AS SHOWN
V	REMOVE WALL + CEILING FINISH DOWN TO FRAMING
	REMOVE WALLS, DOORS + WINDOWS AS SHOWN
W	REMOVE WALL + CEILING FINISH DOWN TO FRAMING
	REMOVE WALLS, DOORS + WINDOWS AS SHOWN
X	REMOVE WALL + CEILING FINISH DOWN TO FRAMING
	REMOVE WALLS, DOORS + WINDOWS AS SHOWN
Y	REMOVE WALL + CEILING FINISH DOWN TO FRAMING
	REMOVE WALLS, DOORS + WINDOWS AS SHOWN
Z	REMOVE WALL + CEILING FINISH DOWN TO FRAMING
	REMOVE WALLS, DOORS + WINDOWS AS SHOWN



COMPASS
STUDIO

7948 Mayfield Road
Chesterland, OH 44026
440-635-0500

Joseph Park, Registered Architect
josephpark@compassstudio.com

PRELIMINARY
NOT FOR
CONSTRUCTION

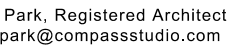
RENOVATION FOR:
CLARK RESIDENCE
146 HUDSON ST
HUDSON, OH 44236

MARK	DATE	DESCRIPTION
01	05/2024	REFINEMENT 01
02	02/2024	DETAILS 01
03	05/2024	ARB SUBMISSION 01

FIRST FLOOR DEMOLITION
PLAN

1 FIRST FLOOR DEMOLITION PLAN
1/4" = 1'-0"





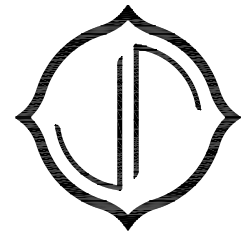
HUDSON, OH 44236

MARK	DATE	DESCRIPTION
	01/05/2024	REFINEMENT 01
	02/02/2024	DETAILS 01
	02/05/2024	ARB SUBMISSION 01

A-111



NORTH



COMPASS
STUDIO

7948 Mayfield Road
Chesterland, OH 44026
440-635-0500

Joseph Park, Registered Architect
josephpark@compassstudio.com

PRELIMINARY
NOT FOR
CONSTRUCTION

RENOVATION FOR:
CLARK RESIDENCE

146 HUDSON ST
HUDSON, OH 44236

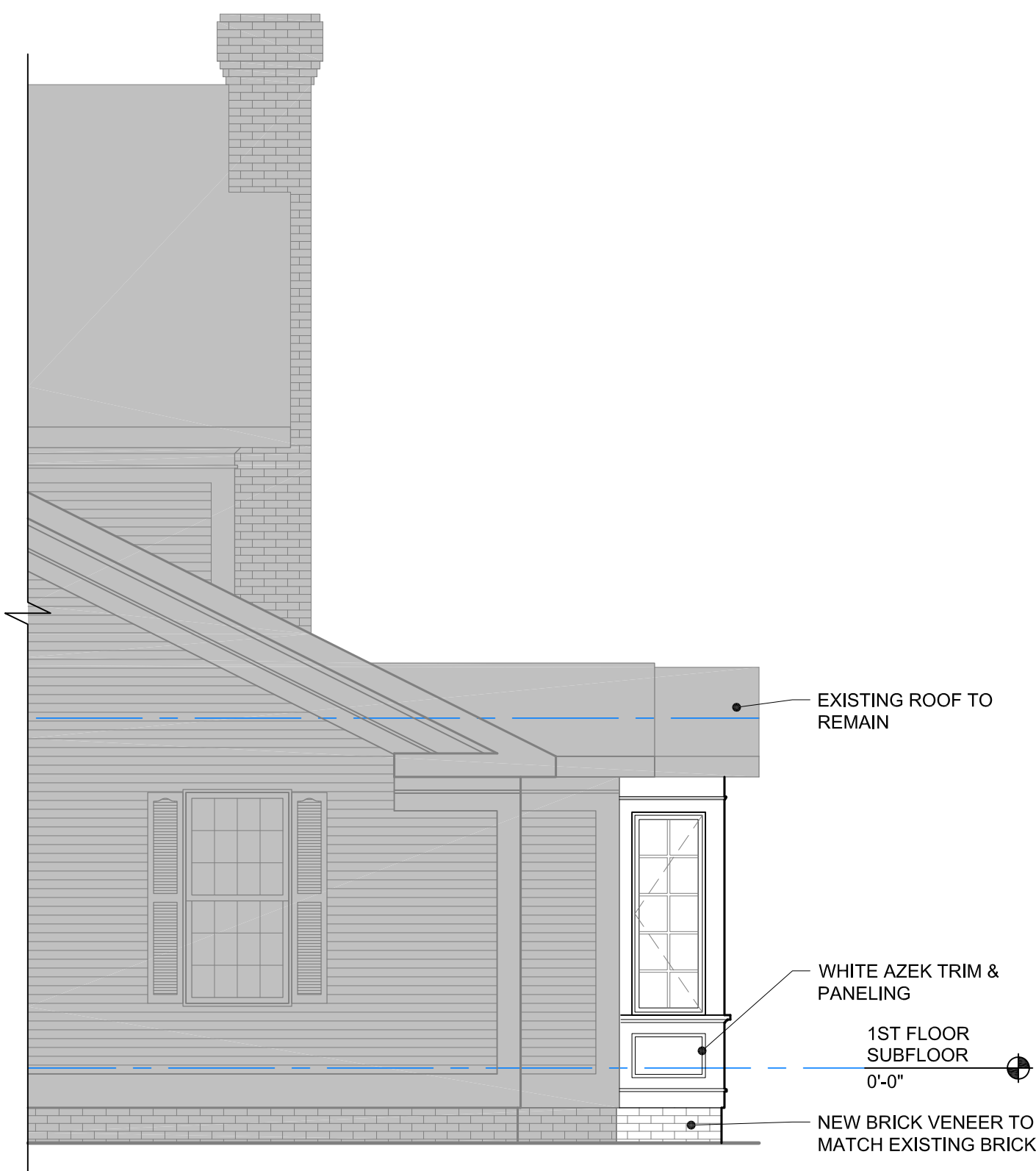
MARK	DATE	DESCRIPTION
01	05/2024	REFINEMENT 01
02	02/2024	DETAILS 01
02	05/2024	ARB SUBMISSION 01

EXTERIOR ELEVATIONS

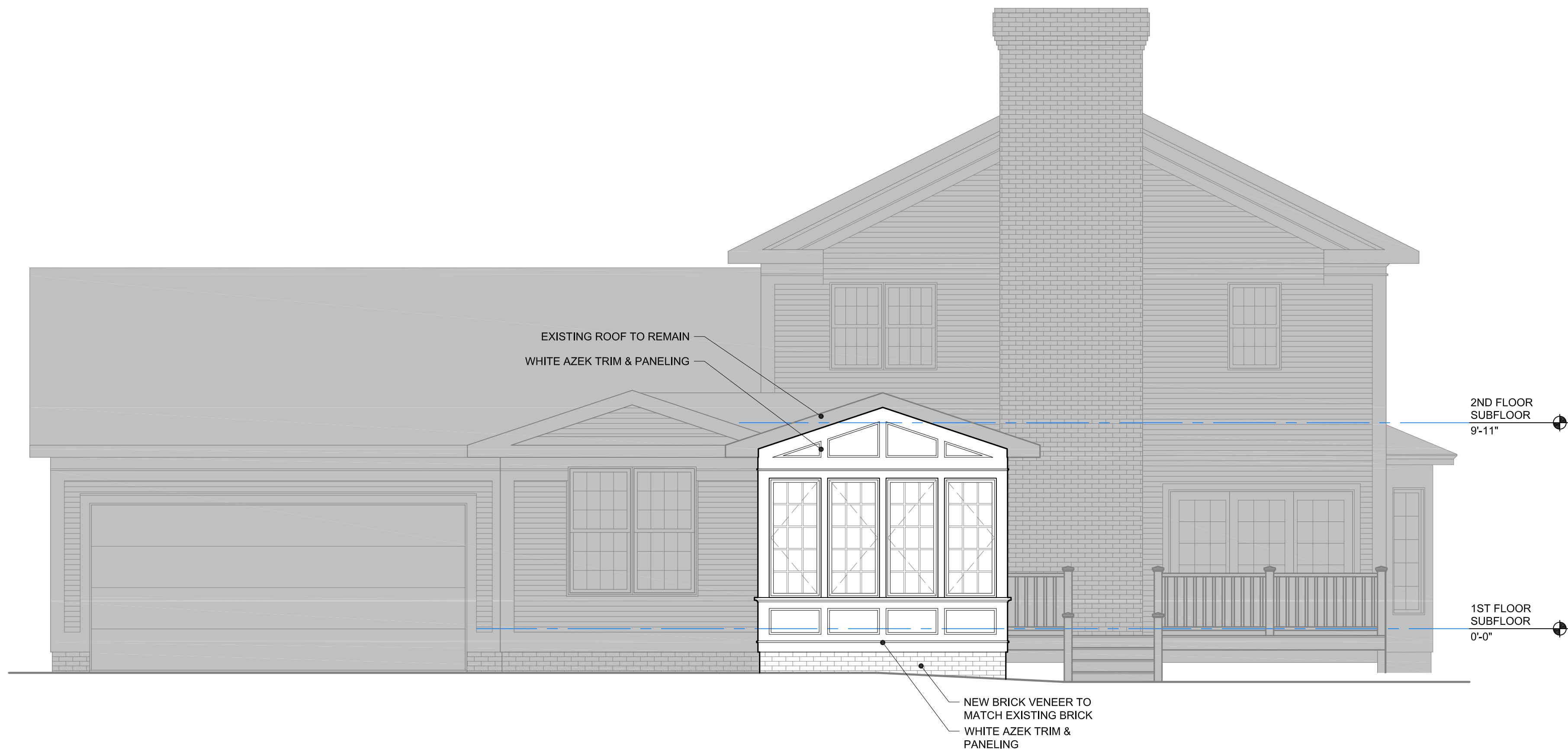
A-201



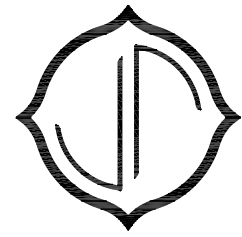
② EAST ELEVATION
1/4" = 1'-0"



③ PARTIAL WEST ELEVATION
1/4" = 1'-0"



① SOUTH ELEVATION
1/4" = 1'-0"



COMPASS
STUDIO

7948 Mayfield Road
Chesterland, OH 44026
440-635-0500

Joseph Park, Registered Architect
josephpark@compassstudio.com

PRELIMINARY
NOT FOR
CONSTRUCTION

RENOVATION FOR:
CLARK RESIDENCE

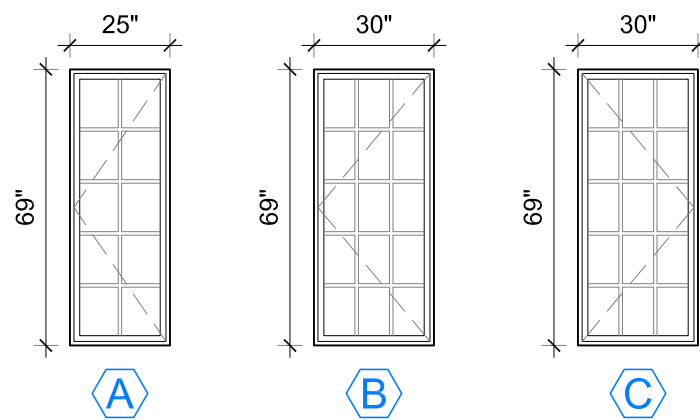
146 HUDSON ST
HUDSON, OH 44236

MARK	DATE	DESCRIPTION
01	05/2024	REFINEMENT 01
02	02/2024	DETAILS 01
02	05/2024	ARB SUBMISSION 01

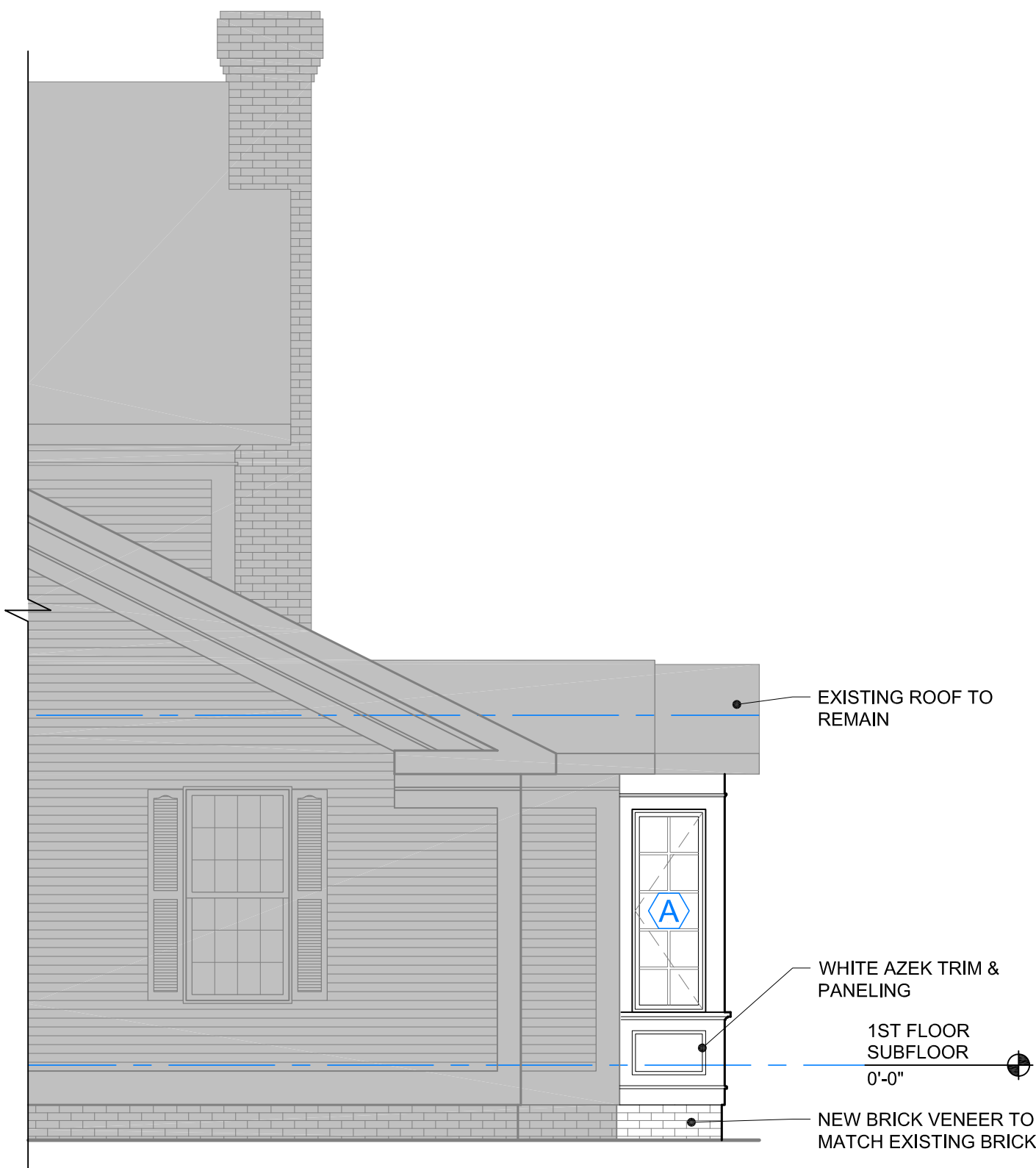
EXTERIOR ELEVATIONS

A-201

WINDOW SCHEDULE								
WINDOW #	TYPE	FINISH	HARDWARE STYLE	HARDWARE FINISH	SCREEN	GRILLE	GLAZING	NOTES
110A	A	WHITE/WHITE	STANDARD CRANK	WHITE	INVIEW	3/4" GBG	LOW-E	
110B	B	WHITE/WHITE	STANDARD CRANK	WHITE	INVIEW	3/4" GBG	LOW-E	
110C	C	WHITE/WHITE	STANDARD CRANK	WHITE	INVIEW	3/4" GBG	LOW-E	
110D	B	WHITE/WHITE	STANDARD CRANK	WHITE	INVIEW	3/4" GBG	LOW-E	
110E	C	WHITE/WHITE	STANDARD CRANK	WHITE	INVIEW	3/4" GBG	LOW-E	
110F	A	WHITE/WHITE	STANDARD CRANK	WHITE	INVIEW	3/4" GBG	LOW-E	
SPLIT FINISHES NOTATED BY EXTERIOR/INTERIOR								
ALL WINDOWS TO BE LIFESTYLE SERIES BY PELLA, UNO								



4 WINDOW LEGEND
1/4" = 1'-0"



3 PARTIAL WEST ELEVATION
1/4" = 1'-0"



2 EAST ELEVATION
1/4" = 1'-0"



1 SOUTH ELEVATION
1/4" = 1'-0"



① NORTHEAST CORNER



② NORTH ELEVATION



③ NORTHWEST CORNER



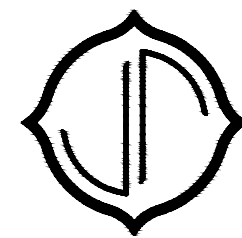
④ SOUTHWEST CORNER



⑤ SOUTH ELEVATION



⑥ EXISTING 3 SEASONS ROOM & PORCH



COMPASS
STUDIO

7948 Mayfield Road
Chesterland, OH 44026
440-635-0500

Joseph Park, Registered Architect
josephpark@compassstudio.com

PRELIMINARY
NOT FOR
CONSTRUCTION

RENOVATION FOR:
CLARK RESIDENCE

146 HUDSON ST
HUDSON, OH 44236

MARK	DATE	DESCRIPTION
01/05/2024		REFINEMENT 01
02/02/2024		DETAILS 01
02/05/2024		ARB SUBMISSION 01

CONTEXT PHOTOS

T-002

Pella® Lifestyle Series

Clad/Wood



#1 performing wood window and patio door for the combination of energy, sound and value.¹

Triple-pane casement



Dual-pane casement



- **Performance redefined**

You don't have to compromise on any aspect of performance. Available performance solutions offer an unbeatable combination of energy efficiency, sound control and value.¹

- **ENERGY STAR® certified²**

Pella products offer energy-efficient options that will meet or exceed ENERGY STAR guidelines in all 50 states. Pella Lifestyle Series products with triple-pane glass have been awarded ENERGY STAR Most Efficient Mark in 2023.

- **Enhanced sound control**

Our patented, triple-pane design with Advanced Low-E glass allows for mixed glass thickness for enhanced sound dampening resulting in an average 52% noise reduction versus single-pane windows.³

- **Popular features and options**

Low-maintenance aluminum-clad exteriors. Factory prefinish with a choice of several paints and stains, or choose primed or unfinished. Several grille types and patterns and high-transparency screens are also available.

- **Intentional design for improved durability**

Intentional jamb/sill design helps seal the end grain of the wood and elevates it off the rough opening, reducing the potential for moisture.

- **Durable 3-way corner joint**

Three-way corner joints are made up of mortise-and-tenon, metal fasteners and commercial adhesive for added strength and durability.

- **Low-maintenance exteriors**

Aluminum-clad exteriors with EnduraClad® finish resists fading and chalking. It is applied in an overlapping fashion for exceptional protection.

- **Exclusive wood protection**

Pella's exclusive EnduraGuard® wood protection is applied after the pieces have been cut and milled, but prior to final assembly. It provides advanced protection against the effects of moisture, decay, stains from mold and mildew — as well as termite damage.

- **Best limited lifetime warranty⁴**

Pella Lifestyle Series products are covered by the best limited lifetime warranty in the industry for wood windows and patio doors.⁴

- **Testing beyond requirements**

At Pella, our products are tested beyond requirements to help ensure they have long-lasting performance and reduce call-backs for you.

Available in these window and patio door styles:⁵



Special shape windows also available.

^{1,2,3,4,5} See back cover for disclosures.

Product Specifications

Window & Patio Door Styles	Min. Width	Min. Height	Max. Width	Max. Height	Performance Class & Grade	Performance Values		
						U-Factor	SHGC	STC
Awning Dual-pane vent	21"	17"	59"	59"	LC30 – LC50	0.25 -0 .34	0.19 -0.51	25-28
Awning Triple-pane vent	21"	17"	59"	59"	R20 - CW50	0.20 - 0.28	0.15 - 0.41	31-37
Casement Dual-pane vent	17"	17"	35"	73"	LC30-LC50	0.25 - 0.34	0.19 - 0.58	25-31
Casement Triple-pane vent	17"	17"	35"	73"	R20-CW50	0.20-0.25	0.17-0.46	31-37
Fixed Casement Dual-pane	17"	17"	73"	73"	LC30-LC50	0.23 - 0.35	0.20 -0 .57	29-32
Fixed Casement Triple-pane	17"	17"	73"	73"	R20-CW50	0.19 – 0.27	0.15 – 0.49	33-37
Double-Hung Dual-pane vent	21"	35"	48"	84"	LC30-LC50	0.25 - 0.34	0.20 – 0.48	27-31
Hinged Patio Door Dual-pane single door	30"	80"	38"	96"	LC50	0.26 – 0.32	0.18 – 0.48	31
Hinged Patio Door Triple-pane single door	30"	80"	38"	96"	LC55	0.23 – 0.28	0.12 – 0.34	34-36
Hinged Patio Door Dual-pane double door	60"	80"	75"	96"	LC50	0.25-0.29	0.18-0.48	30-32
Hinged Patio Door Triple-pane double door	50"	80"	75"	96"	LC55	0.22-0.26	0.14-0.38	34-36
Sliding Patio Door Dual-pane single-door fixed (O)	31"	80"	49"	96"	CW50	0.24-0.33	0.18-0.51	27
Sliding Patio Door Triple-pane single-door fixed (O)	31"	80"	49"	96"	CW60	0.21-0.27	0.17-0.45	33-36
Sliding Patio Door Dual-pane double-door vent (OX or XO)	60"	80"	96"	96"	R20-LC50	0.24 – 0.34	0.18-0.51	29-32
Sliding Patio Door Triple-pane double-door vent (OX or XO)	60"	80"	96"	96"	R25-LC60	0.22 – 0.29	0.16 - .44	33-36

Window sizes available in 1/4" increments
Special sizes available in triple-pane patio doors. For more information regarding performance, visit [pella.com/performance](#). For more information regarding frame and installation types, visit [installpella.com](#).

Window Hardware

Essential Collection

Select from popular designs and finishes to suit every style.



Fold-away Crank

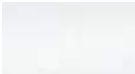


Cam-Action Lock

Finishes:



Champagne



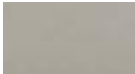
White



Brown



Matte Black



Satin Nickel



Satin Brass

Patio Door Hardware

Essential Collection

Elevate your style and transform a home with elegant selections.

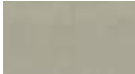


Hinged Patio Door Handle

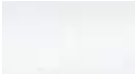


Sliding Patio Door Handle

Finishes:



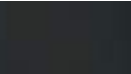
Champagne



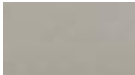
White



Brown



Matte Black



Satin Nickel

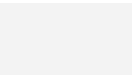


Satin Brass

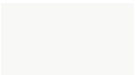
Colors

Prefinished Pine Interior Colors

We can prefinish pine in your choice of several paint and stain colors. Unfinished or primed and ready-to-paint are also available.



White



Bright White



Linen White



Golden Oak Stain



Early American Stain



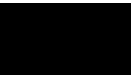
Provincial Stain



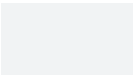
Black Stain

Aluminum-Clad Exterior Colors

Our low-maintenance EnduraClad® exterior finish resists fading and helps protect windows and patio doors for years. Seacoast EnduraClad protective finish for coastal projects with high salt exposure is also available.



Black



White



Brown



Fossil



Iron Ore



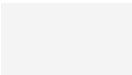
Portobello



Putty



Almond



Classic White



Brick Red



Hartford Green



Wolf Gray

Integrated Blinds⁶

Raise blinds up for an unobstructed view or tilt to let in just the right amount of light. Our best integrated and accessible blinds are available manual or motorized with Pella® Insynctive® technology.



White



Poplar White



Bisque



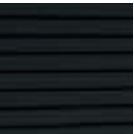
Storm



Golden



Mocha



Black

Integrated Shades⁶

Our best integrated fabric shades feature a white exterior fabric for a uniform look from the street. Integrated and accessible shades are available manual or motorized with Pella Insynctive technology.

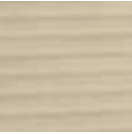
Light-Filtering:



White



Silver



Maize

Room-Darkening:



Cotton



Bamboo



Ash

Haven't landed on the final blind or shade color selection? No problem. With our patented triple-pane design, you and your customer can make those decisions later in the schedule. Our triple-pane products come with all of the hardware to add a blind or shade straight from the factory or at a later time in the building or remodeling process.

Added Peace of Mind

Integrated Security Sensors

Integrated wireless security sensors maintain aesthetics, streamline security installation and ensure no warranty loss is caused by post-installation drilling. Sensors can be monitored via the free Pella® Insynctive® App and are compatible with major security panel systems.⁷ For more information, go to [connectpella.com](#).


^{6,7} See back cover for disclosures.

Performance Packages

To make things easier, we've created performance packages.

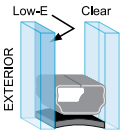
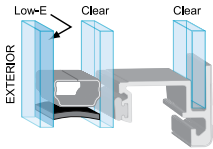
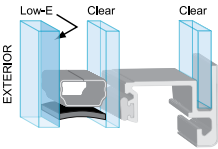
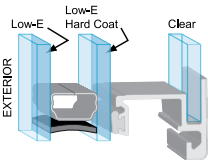
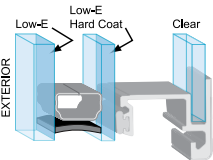
Performance solutions offer an unbeatable combination of energy efficiency, sound control and value.¹ Create room-by-room solutions with the upgraded triple-pane glass design.

All values below are averages compared with single-pane windows.



Most Efficient
2023
www.energystar.gov

Pella® Lifestyle Series offers products awarded ENERGY STAR® Most Efficient for 2023.²

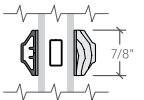
Base	Performance 71% More Energy Efficient ⁸ + 34% Noise Reduction ³	Sound Control 52% Noise Reduction ³	Energy Efficiency 83% More Energy Efficient ⁸	Ultimate Performance 79% More Energy Efficient ⁸ + 52% Noise Reduction ³
 Advanced Low-E Two panes of insulating, energy-efficient glass and our most popular features and options.	 Advanced Low-E SunDefense Low-E or NaturalSun Low-E A triple-pane glass design for a combination of both improved energy efficiency and sound performance.	 Advanced Low-E, SunDefense Low-E or NaturalSun Low-E Sound-reduction glazing Triple-pane glass design featuring mixed glass thicknesses for enhanced sound dampening.	 AdvancedComfort A triple-pane glass design with upgraded AdvancedComfort Low-E glass for enhanced energy efficiency.	 AdvancedComfort Sound-reduction glazing A triple-pane glass design featuring mixed glass thicknesses with upgraded AdvancedComfort Low-E glass for enhanced energy efficiency.

Patented triple-pane glass design gives flexibility to add integrated blinds or shades without impacting performance.

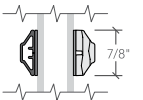
Grilles

Choose the look of true divided light or make cleaning easier by selecting grilles-between-the-glass.

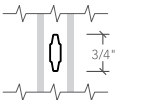
Dual-Pane



Simulated-Divided-Light with Spacer 7/8"

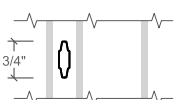


Simulated-Divided-Light without Spacer 7/8"



Contoured Aluminum Grilles-Between-the-Glass 3/4"

Triple-Pane



Contoured Aluminum Grilles-Between-the-Glass 3/4"



The Best Limited Lifetime Warranty in the Industry

We know your reputation matters and you stake your reputation on quality, dependable products. That's why we have the best limited lifetime warranty in the industry for wood windows and patio doors.⁴

¹ Performance solutions require upgrades to triple-pane, AdvancedComfort Low-E and mixed glass thickness. Based on comparing product quotes and published STC/OITC and U-Factor ratings of leading national wood window and patio door brands.

² Some Pella products may not meet ENERGY STAR certification in Canada. For more information, contact your local Pella sales representative or go to nrcan.gc.ca/energy/products/categories/fenestration/13739.

³ Reduction in sound based on OITC ratings of Pella Lifestyle Series windows with respective performance package compared to a single-pane wood or vinyl window with an OITC of 19. Calculated by using the sound transmission loss values in the 80 to 4000 Hz range as measured in accordance with ASTM E-90(09). Actual results may vary.

⁴ Based on comparing written limited warranties of leading national wood window and wood patio door brands. See written limited warranty for details, including exceptions and limitations, at pella.com/warranty.

⁵ Double-hung windows available in dual-pane only.

⁶ Available with triple-pane products only.

⁷ Requires the Insynctive App on a smart device, an Insynctive Bridge and a wireless home router with internet connection.

⁸ Window energy efficiency calculated in a computer simulation using RESFEN 6.0 default parameters for a 2000 sq. foot new construction single-story home when Pella Lifestyle Series windows with the respective performance package are compared to a single-pane wood or vinyl window. The energy efficiency and actual savings will vary by location. The average window energy efficiency is based on a national average of 94 modeled cities across the country and weighting based on population. For more details see pella.com/methodology.

⁹ Appearance of exterior grille color may vary depending on the Low-E insulating glass selection.

Pella® Reserve™

Traditional Wood & Clad/Wood



Exquisitely designed windows and doors with unparalleled historical detailing.

Double-Hung Interior



Double-Hung Exterior



- **Historical details**

Our most historically authentic line of wood windows and patio doors. Featuring through-stile construction, deliberate proportions and intricate profiles. Pella Reserve – Traditional products are the ideal choice for historical renovations and traditional building projects.

- **Authentic hardware**

Complement your project with historically authentic spoon-lock window hardware. Our Antiek casement window hardware is inspired by period furniture to deliver authentic traditional style.

- **Architectural interest**

Pella's Integral Light Technology® grille helps capture the look of true-divided-light without sacrificing energy performance. Further your aesthetic with the putty profile, recreated with historically accurate angles to provide meaningful depth and a realistic shadow. Pella Reserve products offer the industry's deepest sash dimension.

- **Virtually unlimited customization**

If you can dream it, we can build it with our most customizable product line. From extra tall to extra wide, Pella can craft unique windows that complement your aesthetic. Custom sizes, grille patterns and designs, finishes, wood types and glass options are available.

- **Tailor-made solutions**

From preliminary drawings to installation, Pella's expert team of architects, engineers, drafters and consultants can work to deliver custom window and door solutions for your project. Partner with Pella to achieve your unique vision without concessions.

- **Intentional innovation**

The award-winning Integrated Rolscreen® retractable screen preserves aesthetics and the view. It is a double- and single-hung screen that appears when you open the window and rolls away, out of sight, when you close it.

- **Durable interiors and extruded aluminum exteriors**

To help save you time on the jobsite, interior finish options are available in a variety of paints and stains, or primed and ready-to-paint. To complement your exterior aesthetic, choose from our carefully curated color palette or define your own custom color for your project.

- **ENERGY STAR® certified¹**

Pella wood products offer energy-efficient options that will meet or exceed ENERGY STAR guidelines in all 50 states.

- **Testing beyond requirements**

All wood products and testing are not created equal. Pella raises the bar on industry standard testing and beyond to deliver long-lasting products and reduced callbacks. Every Pella wood window and door passes 5, on average, quality checks before it arrives on the jobsite.

- **Best limited lifetime warranty²**

Pella Reserve products are covered by the best limited lifetime warranty in the business for wood windows and patio doors.²

Available in these window and patio door styles:



Special shape windows also available.

¹² See back cover for disclosures.

Product Specifications

Window & Patio Door Styles	Min. Width	Min. Height	Max.Width	Max. Height	Performance Class & Grade	Performance Values			Frame / Install
						U-Factor	SHGC	STC	
Awning	13-¾"	13-¾"	59"	59"	LC30 – CW50	0.25-0.29	0.18-0.47	27-35	Fold-out Fin, Block Frame, EnduraClad Exterior Trim / Brickmould
Casement	13-¾"	13-¾"	47"	108"	R35-CW50	0.25-0.29	0.18-0.47	27-34	Fold-out Fin, Block Frame, EnduraClad Exterior Trim / Brickmould
Fixed Casement	10"	10"	144"	144"	R35-CW50	0.25-0.29	0.18-0.47	27-35	Fold-out Fin, Block Frame, EnduraClad Exterior Trim / Brickmould
Double-Hung	14"	24-3/8"	48"	96"	CW30-CW50	0.25-0.30	0.19-0.53	28-35	Fold-out Fin, Block Frame, EnduraClad Exterior Trim / Brickmould
Precision Fit Double-Hung	13-½"	23-¾"	48"	84"	CW40-CW50	0.25-0.31	0.19-0.53	26-30	Pocket Replacement
Monumental Hung	13-¾"	24"	72"	144"	LC25-CW50	0.25-0.30	0.17-0.47	29-34	Fold-out Fin, Block Frame, EnduraClad Exterior Trim / Brickmould
In-Swing Hinged Patio Door (Single)	18"	36"	48"	119-½"	LC40-LC55	0.25-0.29	0.14-0.40	31-35	
In-Swing Hinged Patio Door (Double)	36"	36"	96"	119-½"	LC40-LC55	0.25-0.29	0.14-0.40	31-35	
Out-Swing Hinged Patio Door (Single)	18"	36"	48"	119-½"	R50-LC70	0.25-0.30	0.14-0.39	30-36	
Out-Swing Hinged Patio Door (Double)	36"	36"	96"	119-½"	R50-LC70	0.25-0.30	0.14-0.39	30-36	
Sliding Patio Door (O)	30-¾"	74"	60-¾"	119-½"	LC40-LC70	0.29-0.32	0.15-0.42	—	
Sliding Patio Door (OX, XO)	59-¼"	74"	119-½"	119-½"	LC35-LC65	0.29-0.32	0.15-0.42	29-35	
Sliding Patio Door (OXO)	90"	74"	180"	119-½"	LC30-LC45	0.29-0.32	0.15-0.42	—	
Sliding Patio Door (OXXO)	116-1/8"	74"	236-1/8"	119-½"	LC25-LC40	0.29-0.32	0.15-0.42	—	
Multi-Slide Patio Door	40-¼"	50-½"	701-5/8"	119-½"	R15-LC25 ³	0.30 – 0.36	0.15 – 0.46	31	For more info visit PellaADM.com
Bifold Patio Door	31-¾"	55-½"	312"	119-½"	R15-LC25 ³	0.26-0.44	0.13-0.45	—	

Window sizes available in 1/8" increments
Special sizes available. For more information regarding performance, visit [pella.com/performance](#). For more information regarding frame and installation types, visit [PellaADM.com](#).

Grilles

Integral Light Technology®

Choose the look of true divided light without sacrificing energy performance.



Putty Glaze Exterior with Ogee Interior⁴
7/8", 1-1/4" or 2"



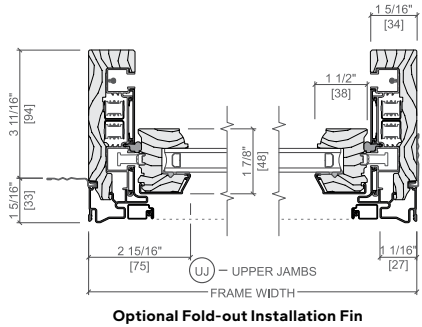
Putty Glaze Exterior with Ogee Interior⁴
7/8", 1-1/4" or 2"



Ogee Exterior with Ogee Interior⁴
7/8", 1-1/4" or 2"

Cross Sections

Cross Sections



The double-hung cross sections provide visual reference to the historic putty exterior profile and traditional, beveled Ogee interior that add architectural interest to your project.

^{3,4} See back cover for disclosures.

Window Hardware

Classic Collection

Get a timeless look with authentic styles in classic finishes.



Fold-away Crank
Antiek



Spoon-Style Lock

Finishes:



Champagne



White



Brown



Matte Black



Oil-Rubbed Bronze



Satin Nickel



Satin Brass

Rustic Collection

Create a distinct and charming look with distressed finishes.

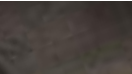


Fold-away Crank
Antiek



Spoon-Style Lock

Finishes:



Distressed Bronze



Distressed Nickel

Essential Collection

Select from popular designs and finishes to suit every style.



Fold-away Crank



Cam-Action Lock

Finishes:



Champagne



White



Brown



Matte Black



Oil-Rubbed Bronze



Satin Nickel



Satin Brass

Patio Door Hardware

Classic Collection

Choose timeless pieces, created in collaboration with Baldwin® Hardware, for a look that will never go out of style.

BALDWIN®



Hinged & Bifold Patio Door Handle
Virago

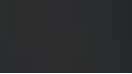


Sliding & Multi-Slide Patio Door Handle
Ambrose



Multi-Slide Patio Door Handle^{5,6}

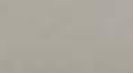
Finishes:



Matte Black



Oil-Rubbed Bronze



Satin Nickel



Satin Brass

Essential Collection

Elevate your style and transform a home with elegant selections.



Hinged & Bifold Patio Door Handle
Standard



Sliding Patio Door Handle
Standard

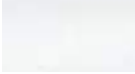


Multi-Slide Patio Door Handle^{5,6}

Finishes:



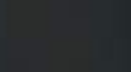
Champagne



White



Brown



Matte Black



Oil-Rubbed Bronze



Satin Nickel



Satin Brass

Additional hardware collections available. Visit [PellaADM.com](#) for more information.

^{5,6} See back cover for disclosures.

Colors

Wood Types

Choose the wood species that best complements your project's interior.

Custom solutions:


Pine


Douglas Fir


Mahogany


White Oak

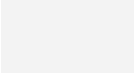

Red Oak

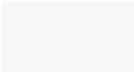

Cherry



Maple

Prefinished Pine Interior Colors


Custom interior finishes, unfinished or primed and ready-to-paint are also available.



White



Bright White



Linen White



Natural Stain



Golden Oak Stain



Early American Stain



Provincial Stain


Dark Mahogany Stain


Red Mahogany Stain


Espresso Stain


Charcoal Stain


Black Stain

Extruded Aluminum-Clad Exterior Colors

Our low-maintenance EnduraClad® exterior finish resists fading. Take durability one step further with EnduraClad Plus which also resists chalking and corrosion.⁷



Custom colors are also available.


Black


White


Brown


Fossil


Iron Ore


Portobello


Putty


Almond


Classic White


Brick Red


Hartford Green


Pearl Gray


Soft Linen


Satin Steel


Matte Gray


Wolf Gray


Spice Red


Sage


Frost Blue


Blue Ash

Added Peace of Mind

Integrated Security Sensors

Integrated wireless security sensors maintain aesthetics, streamline security installation and ensure no warranty loss is caused by post-installation drilling. Sensors can be monitored via the free Pella® Insynctive® App and are compatible with major security panel systems.⁸ For more information, go to connectpella.com.



The Best Limited Lifetime Warranty in the Industry

We know your reputation matters and you stake your reputation on quality, dependable products. That's why we have the best limited lifetime warranty in the industry for wood windows and patio doors.²

¹ Some Pella products may not meet ENERGY STAR® guidelines in Canada. For more information, contact your local Pella sales representative or go to energystar.gc.ca.

² Based on comparing written limited warranties of leading national wood window and wood patio door brands. See written limited warranty for details, including exceptions and limitations, at pella.com/warranty or contact Pella Customer Service.

³ Ratings are contingent on product configurations.

⁴ Color-matched to your product's interior and exterior color.

⁵ Flush multi-slide handle is a Pella exclusive design.

⁶ Flush multi-slide handle is not available in Champagne.

⁷ EnduraClad Plus protective finish is not available with all colors. See your local Pella sales representative for availability.

⁸ Requires the Insynctive App on a smart device, an Insynctive Bridge and a wireless home router with internet connection.

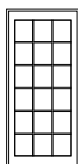


Pella® Reserve™ Traditional Sliding Patio Door

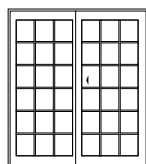
Size and Performance Data

Sizes	
Standard Door Sizes	•
Standard Fixed Frame Direct Set Transom Sizes	•
Fixed Sash and Frame	•
Wide Stile Fixed Sash and Frame	•
Special Sizes	•
Custom Sizes	•
One-Panel Door Width (Fixed - O)	
2' 7"	•
3' 1"	•
3' 7"	•
4' 1"	•
5' 1"	•
Two-Panel Door Width (Fixed-Vent or Vent-Fixed – OX or XO)	
5'	•
6'	•
7'	•
8'	•
9' 11"	•
Three-Panel Door Width (Fixed-Vent-Fixed – OXO)	
7' 6"	•
9'	•
10' 6"	•
12'	•
15'	•
Four-Panel Door Width (Fixed-Vent-Vent-Fixed – OXXO)	
9' 9"	•
11' 9"	•
15' 9"	•
19' 8"	•
Door Heights	
6' 7-1/2"	•
6' 10"	•
8'	•
9'	•
10'	•

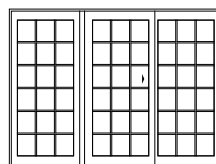
One-Panel



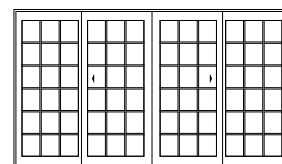
Two-Panel



Three-Panel



Four-Panel



(-) = Not Available

Three-Panel, Fixed-Vent-Fixed (OXO) combination doors also available as OOX and XO combinations.



Pella® Reserve™ Traditional Sliding Patio Door

Size and Performance Data

Performance₁

Standard

Meets or Exceeds AAMA/WDMA Ratings	SD-LC30 – LC70 Hallmark Certified
Air Infiltration (cfm/ft ² of frame @ 1.57 psf wind pressure)	0.10
Water Resistance	4.59 – 10.65 psf
Design Pressure	30 – 70 psf

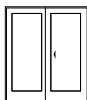
Impact-Resistant Glass

7/8" Insulated Glass PVB	Up to DP70
Meets or Exceeds AAMA/WDMA Ratings	Wind Zone 4 - Missile D Hallmark Certified FPAS - HVHZ Approved

Other Performance Criteria

Forced Entry Resistance Level (Minimum Security Grade) ₂	40
Operating Force (lb.) Initiate Motion / Maintain Motion (of Hallmark tested size and glazing) ₃	30/20

Sound Transmission Class / Outdoor-Indoor Transmission Class

Product	Frame Size Tested ₄	Glazing System				STC Rating	OITC Rating
		Overall Glazing Thickness	Exterior Glass Thickness	Interior Glass Thickness	Third Pane Thickness		
<div>Clad Sliding French Door</div> <div></div>	WITHOUT GRILLES						
	71-1/4" x 81-1/2" (Fixed-Vent)	13/16"	3 mm	3 mm	—	31	25
	71-1/4" x 81-1/2" (Fixed-Vent)	13/16"	5 mm	7.6mm PVB	—	35	30
	71-1/4" x 81-1/2" (Fixed-Vent)	13/16"	4 mm	6 mm	—	34	30
	71-1/4" x 81-1/2" (Fixed-Vent)	7/8"	8.6 mm PVB	5 mm	—	34	30
	71" x 81-1/2" (Fixed-Vent)	1"	4 mm	4 mm	4 mm	32	28

(1) Maximum performance for single unit when glazed with the appropriate glass thickness. See Design Data pages in this section for specific product performance class and grade values.

(2) The higher the level, the greater the product's ability to resist forced entry.

(3) Glazing configurations may result in higher operational forces.

(4) ASTM E 1425 defines standard sizes for acoustical testing. Ratings achieved at that size are representative of all sizes of the same configuration.



Pella® Reserve™ Traditional Sliding Patio Door

Features and Options

Standard	Options / Upgrades
Glazing	
Glazing Type	
Dual-Pane Insulating Glass	Triple-pane Insulating Glass
Insulated Glass Options/Low-E Types	
Advanced Low-E	SunDefense™ Low-E
	SunDefense+ Low-E
	AdvancedComfort Low-E
	NaturalSun Low-E
	NaturalSun+ Low-E
	Clear (no Low-E coating)
Additional Glass Options	
Tempered Glass	Obscure Glass ₁
	Tinted Glass (Bronze, Gray and Green)
	Non-Impact Laminated
	Products with Impact-Resistant Laminated Dual-Pane 7/8" Insulating Glass
Gas Fill/High Altitude	
Argon	High altitude
Wood Types	
Pine	Mahogany, Douglas Fir
Exterior	
EnduraClad® aluminum-clad	EnduraClad Plus aluminum-clad
Cladding Colors	
Standard colors	Feature Colors, Custom Colors ₁
Interior	
Unfinished wood	Factory primed ₂ , Factory prefinished paint ₂ , Factory prefinished stain ₂
Hardware	
Interior	
Champagne, White or Brown or Matte Black	Satin Brass, Satin Nickel or Oil-Rubbed Bronze, Distressed Bronze, Distressed Nickel
Exterior	
Handle matches cladding	—
Locking system	
Multi-Point	—
Key Lock	—
Foot Bolt	—
Grilles	
Integral Light Technology® Grilles	
—	Traditional, Prairie, Top Row, Cross, New England, Victorian, Custom
Grilles-Between-the-Glass	
—	Traditional, Prairie, Top Row ₁ , Cross, Custom-Equally Divided
Screens₃	
Flat Screen	Rolscreen® Retractable

(1) Contact your local Pella sales representative for current designs and color options.

(2) Not available on Mahogany and Douglas Fir interiors.

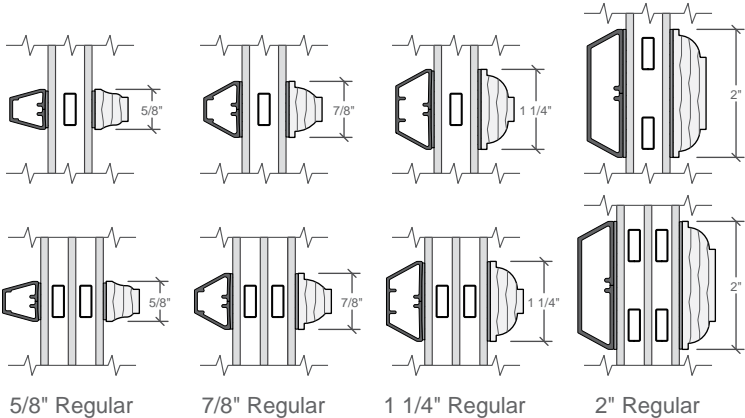
(3) Rolscreen available in OX, XO, OXO doors only.



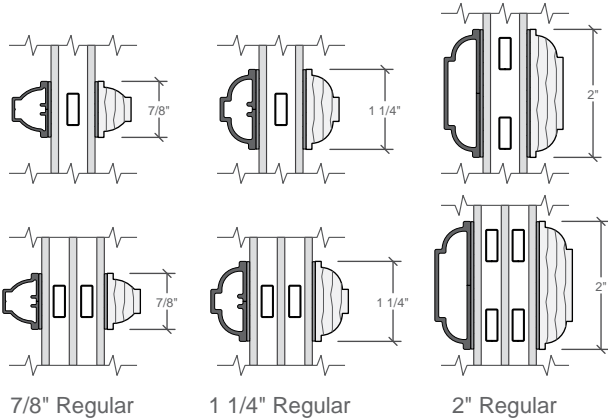
Grille Profiles

Traditional Style Collection - Integral Light Technology®

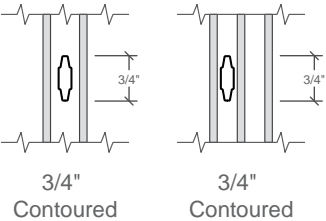
Putty Glaze and Ogee Grilles
Clad Exterior - Wood Interior



Ogee Grilles
Clad Exterior - Wood Interior



Grilles-Between-the-Glass



Interior wood ILT grilles available in Pine, Mahogany or Douglas Fir to match complete unit.



Special Sizes and Dimensions

Special Size Frame Dimensions₁

Door Type	Frame Width		Frame Height	
	Minimum	Maximum	Minimum	Maximum
O	30-3/4" (781)	60-3/4" (1 543)	74" (1 880)	119-1/2" (3 035)
OX, XO	59-1/4" (1 505)	119-1/2" (3 035)	74" (1 880)	119-1/2" (3 035)
OXO	90" (2 286)	180" (4 572)	74" (1 880)	119-1/2" (3 035)
OXXO	116-1/8" (2 950)	236-1/8" (5 998)	74" (1 880)	119-1/2" (3 035)

Knock-down Frames

When the below conditions are met, units will be shipped as knock-down frames.

Certain ILT grille configurations require knock-down frames, contact your local sales representative for details.

Door Type	
O	FW > 48-3/4" or FH > 95-1/2"
OX, XO	FW > 95-1/4" or FH > 95-1/2"
OXO	FW > 144" or FH > 95-1/2"
OXXO	FW > 188-1/8" or FH > 95-1/2"

Miscellaneous Formulas

	Doors	
	Width	Height
Visible Glass	Width of O = Frame - 11-7/16" Width of OX, XO = (Frame - 16-15/16") ÷ 2 Width of OXO = (Frame - 27-1/16") ÷ 3 Width of OXXO = (Frame - 32-1/2") ÷ 4	Height = Frame - 12-5/8"
Actual Glass	Width of O = Frame - 10-1/8" Width of OX, XO = (Frame - 17-15/16") ÷ 2 Width of OXO = (Frame - 28-1/16") ÷ 3 Width of OXXO = (Frame - 33-1/2") ÷ 4	Height = Frame - 13-5/8"
Clear Opening ₂	Width of OX, XO = (Frame - 13-5/8") ÷ 2 Width of OXO = (Frame - 21-1/2") ÷ 3 Width of OXXO = (Frame - 30-3/8") ÷ 2	Height = Frame - 3-3/4"

	Transoms	
	Visible Glass	Actual Glass
Fixed Frame Direct Set	Width = Frame - 3-1/4" Height = Frame - 3-1/4"	Width = Frame - 2" Height = Frame - 2"
Fixed Casement	Width = Frame - 5-3/4" Height = Frame - 5-3/4"	Width = Frame - 4-3/8" Height = Frame - 4-3/8"
Wide Stile Casement	Width = Frame - 11-5/8" Height = Frame - 5-3/4"	Width = Frame - 10-1/4" Height = Frame - 4-3/8"

(1) Available within size range shown.

(2) Clear opening width shown is with standard hardware, premium hardware reduces opening width by 1.612" for OX, XO, OXO doors, and 2.144" for OXXO doors. Doors with anodized finishes will have a reduced opening width by .48" for OX, XO and OXO and .96" for OXXO doors.

Keep frame dimensions to the nearest 1/8" increment. To convert areas to square meters (m²), multiply square feet by 0.0929.

Fixed-Vent-Fixed (OXO) combination doors also available as OOX and XOO combinations.



Detailed Product Description - Aluminum-Clad Exterior

Frame

- Select softwood, immersion treated with Pella's EnduraGuard® wood protection formula in accordance with WDMA I.S.-4. The EnduraGuard formula includes three active ingredients for protection against the effects of moisture, decay, stains from mold and mildew. Plus, an additional ingredient adds protection against termite damage.
- Interior exposed surfaces are [pine] [mahogany] [douglas fir] edge banded and veneered.
- Exterior surfaces are clad with aluminum at the head and jambs.
- Components are assembled with screws, staples and concealed corner locks.
- Solid extruded aluminum sill with Black finish. [mahogany threshold for mahogany door] [[oak] [composite black] threshold for [pine] [douglas fir] door].
- Optional factory-installed fold-out installation fins with flexible fin corners.
- Fin position will accommodate standard 4-9/16" (116mm) wall depths.
- Frame depth is 5-7/8" (149mm).
- Optional factory-applied jamb extensions available between 4-9/16" (116mm) and 7-3/16" (183mm) wall depths.
- Optional factory-applied EnduraClad® exterior trim.

Door panels

- Select softwood, immersion treated with Pella's EnduraGuard® wood protection formula in accordance with WDMA I.S.-4. The EnduraGuard formula includes three active ingredients for protection against the effects of moisture, decay, stains from mold and mildew. Plus, an additional ingredient adds protection against termite damage.
- Interior exposed surfaces are veneered with [pine] [mahogany] [douglas fir].
- Exterior surfaces are clad with aluminum.
- Panel stiles have LVL core with finger-jointed edge bands on both sides and veneered on both faces.
- Panel rails are three-ply construction, randomly finger-jointed blocks laminated with water-resistant glue and veneered on both sides.
- Corners are secured with metal fasteners and structural adhesive.
- Panel thickness is 2-1/16" (52mm).
- Panel exterior profile is [ogee] [putty glaze], interior profile is ogee.
- Vent panels have two adjustable ABEC 5 sealed electroplated steel ball-bearing rollers with organic coating, set on stainless steel track, standard.
– or –
- Two adjustable corrosion-resistant stainless steel ball-bearing rollers; out-of-unit option.

Weatherstripping

- Dual-durometer extruded polymer with bulb at head, jamb and threshold. Corners are welded along perimeter of door panels.

Glazing System¹

- Quality fully-tempered float glass complying with ASTM C 1048.
- Custom and high altitude glazing available.
- Silicone-glazed, 13/16" double-pane, dual-seal, insulating glass
 - [Clear] [Obscure] [Reflective Bronze] with air.
 - [Obscure Low-E [with argon]] [[Advanced] [AdvancedComfort] [SunDefense™] [SunDefense+] [NaturalSun] [NaturalSun+] Low-E [with argon]].
 - [Bronze] [Gray] [Green] Advanced Low-E [with argon]].
– or –
- Silicone-glazed, [13/16"] [7/8"] double-pane, dual-seal, laminated, insulating glass
 - Clear with air.
 - [Advanced] [SunDefense™] Low-E with argon.
 - [Bronze] [Gray] [Green] Advanced Low-E with argon.
– or –
- Silicone-glazed, 1" triple-pane, dual-seal, insulating glass
 - [Obscure Low-E [with argon]] [Advanced] [SunDefense™] [NaturalSun] Low-E [with argon]].
– or –
- Silicone-glazed, 7/8" double-pane, dual-seal, impact-resistant, laminated, insulating glass
 - Clear with air.
 - [Bronze] [Gray] [Green] with air.
 - [Advanced] [SunDefense™] Low-E [with argon].

Exterior

- Aluminum clad exteriors shall be finished with EnduraClad® protective finish, in a multi-step, baked-on finish.
 - Color is [Standard] [feature] [custom]₂.
– or –
- Aluminum clad exteriors shall be finished with EnduraClad Plus protective finish with 70% fluoropolymer resin in a multi-step, baked-on finish.
 - Color is [Standard] [feature] [custom]₂.

Interior

- [Unfinished, ready for site finishing] [factory primed with one coat acrylic latex] [factory prefinished [paint] [stain]₂].

Hardware

- Interior handle and thumb lock finish is [Satin Brass] [Satin Nickel] [Oil-Rubbed Bronze] [Polished Nickel] [Polished Chrome] [Distressed Bronze] [Distressed Nickel] [baked enamel [Champagne] [White] [Brown] [Matte Black]].
- Exterior handle finish is baked enamel, color to match door cladding.
- Keylock with K-keyway cylinder.
- Multiple point lock hardware is electroplated steel with stainless steel strikes.
- The foot bolt has a Black finish.

Optional Products

Grilles

- Integral Light Technology®
 - Interior grilles are [5/8"] [7/8"] [1-1/4"] [2"] ogee profile that are solid [Pine] [mahogany] [douglas fir]. Interior surfaces are [unfinished, ready for site finishing] [factory primed] [pine: factory prefinished [paint] [stain]₂].
 - Exterior grilles are [5/8" putty profile] [7/8" [putty] [ogee] profile] [1-1/4" [putty] [ogee] profile] [2" ogee profile] that are extruded aluminum, finished to match door cladding.
 - Patterns are [Traditional] [Prairie] [Top Row] [Cross] [New England] [Victorian].
 - Insulating glass contains non-glare spacer between the panes of glass.
 - Grilles are adhered to both sides of the insulating glass with VHB acrylic adhesive tape and aligned with the non-glare spacer
– or –
- Grilles-Between-the-Glass₃
 - Insulating glass contains 3/4" contoured aluminum grilles permanently installed between two panes of glass.
 - Patterns are [Traditional] [Prairie] [Cross] [Top Row]
 - Interior color is [White] [Tan₄] [Brown₄] [Putty₄] [Black] [Morning Sky Gray] [Ivory] [Sand Dune] [Harvest] [Cordovan] [Brickstone].
 - Exterior color₅ is [standard₂].

Screens

- InView™ screens
 - Vinyl-coated 18/18 mesh fiberglass screen cloth complying with the performance requirements of SMA 1201, set in aluminum frame, supplied complete with all necessary hardware.
 - Insect screen assembly is top-hung on two adjustable nylon rollers installed on room side of door panels.
 - Screen frame exterior is [painted] to match exterior color.
 - Screen frame interior is [pine] [mahogany] [douglas fir] veneer wrapped over extruded aluminum [Unfinished] [prefinished to match door₆].
– or –
- Rolscreen® Retractable Screen
 - Self-storing, rolling, black vinyl-coated 18/16 mesh fiberglass screen cloth complying with ASTM D 3656 and SMA 1201 mounted to fixed panel and covered by veneered aluminum.
 - Cover finish is [factory prefinished paint] [[pine] [mahogany] veneer wrapped over extruded aluminum with factory prefinished stain₂].
 - Available on two- and three-panel sliding patio doors.

Sensors

- Optional factory installed integrated security sensors available in vent units.

(1) Insulating glass with argon is Low-E coated. All other insulating glass is air-filled.

(2) Contact your local Pella sales representative for current color options.

(3) Available in clear or Low-E insulating glass only.

(4) Tan, Brown and Putty Interior GBG colors are available in single-tone (Putty/Putty, Brown/Brown or Tan/Tan) (Putty mono). Other interior colors are also available with Tan or Brown exterior.

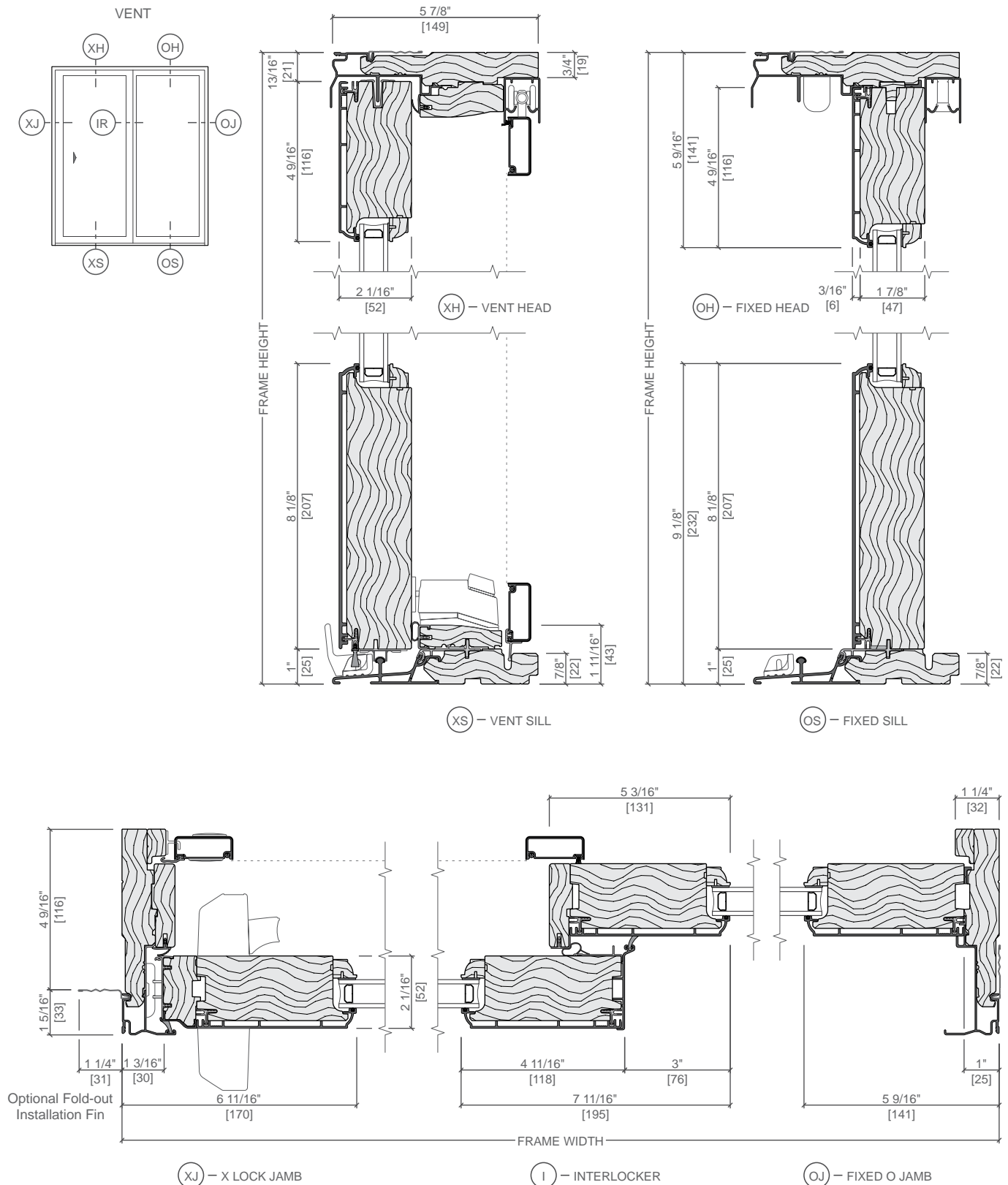
(5) Appearance of exterior grille color will vary depending on Low-E coating on glass.

(6) Prefinished White interior screen frame is only available with White exterior finish.



Pella® Reserve™ Traditional Sliding Patio Door

Unit Sections Aluminum-Clad Exterior, Ogee Exterior Profile



Scale 3" = 1' 0"

All dimensions are approximate.