



**DRAWING SCALE
APPLIES WHEN
PRINTED FULL
SIZE AT 24"x36"**

not published; all rights reserved



PROJECT No.	24.001
-------------	--------

DRAWING UPDATES

05-04



**DRAWING SCALE
APPLIES WHEN
PRINTED FULL
SIZE AT 24"x36"**

not published; all rights reserved

750 W Streetsboro St
Hudson, OH, 44236

PROJECT No.	24.001
-------------	--------

DRAWING UPDATES



CHRIST COMMUNITY CHAPEL OFFICE ADDITION

750 W Streetsboro St
Hudson, OH, 44236

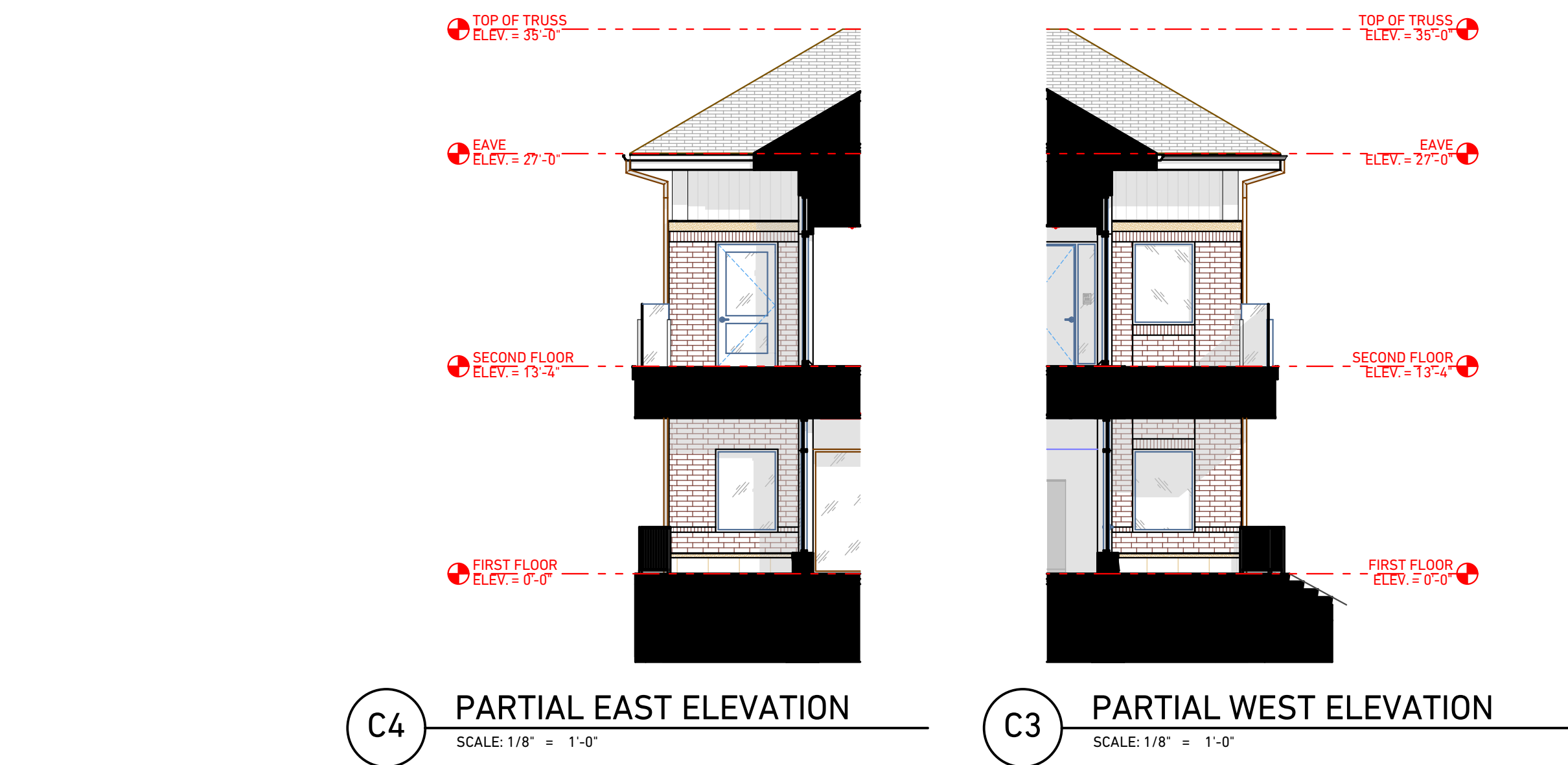
PROJECT No. 24.001

PLANNING COMMISSION SUBMISSION

DRAWING UPDATES

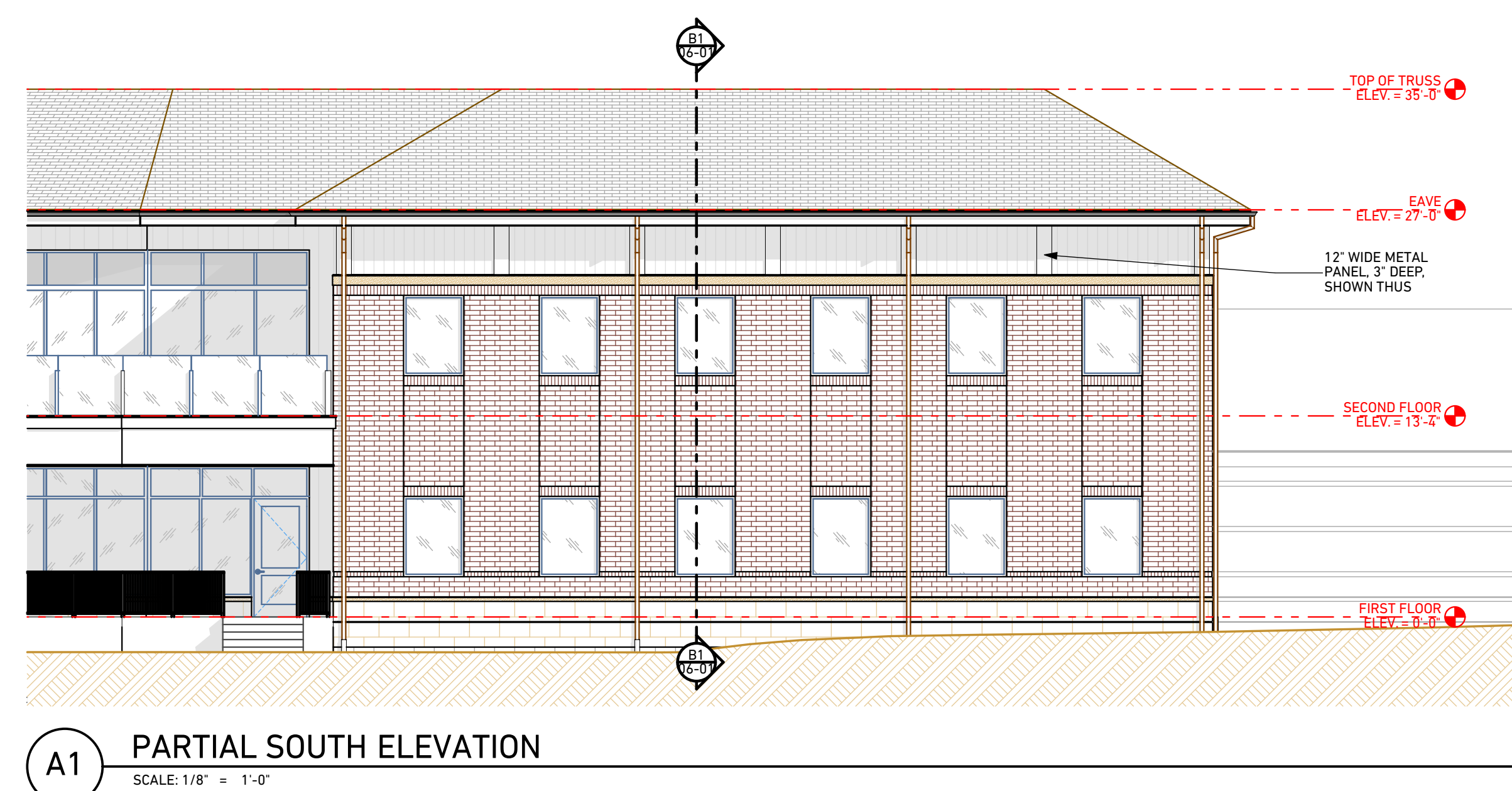
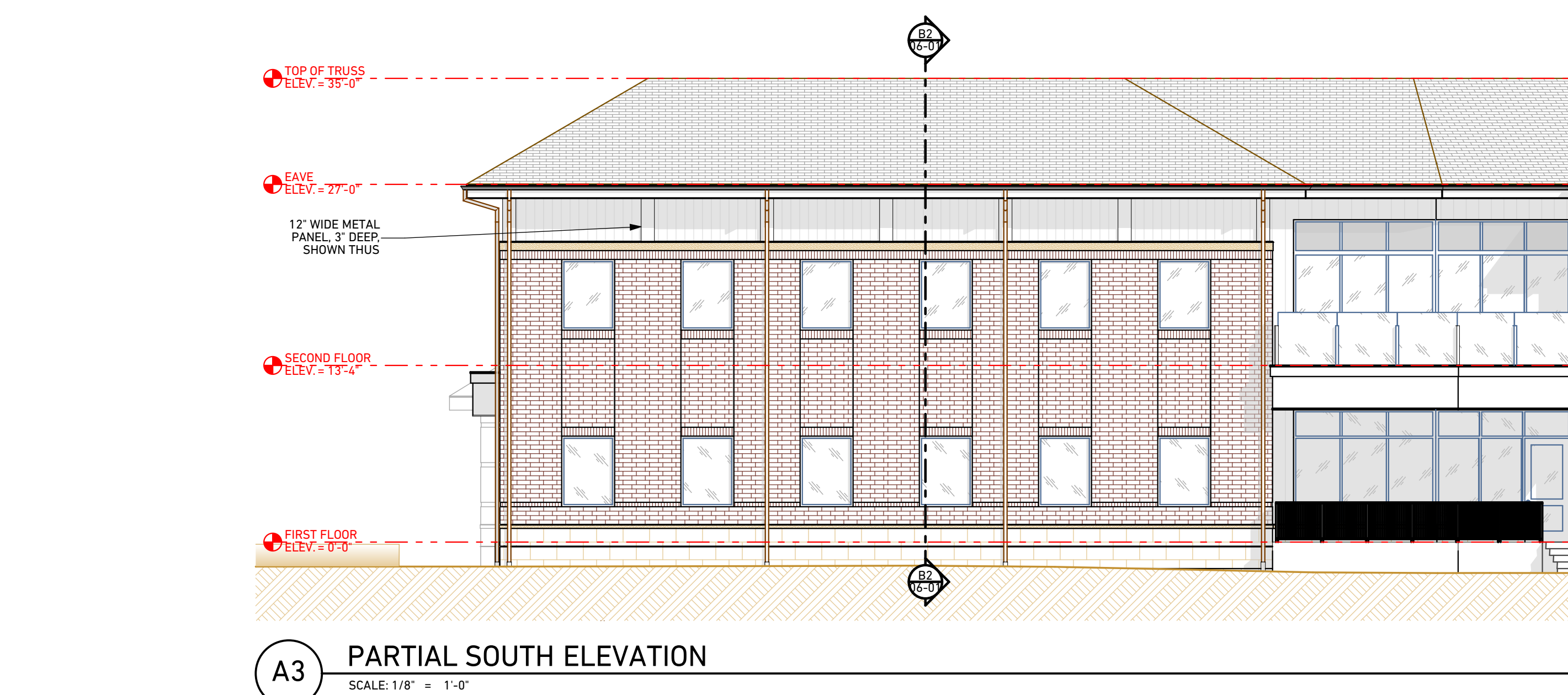
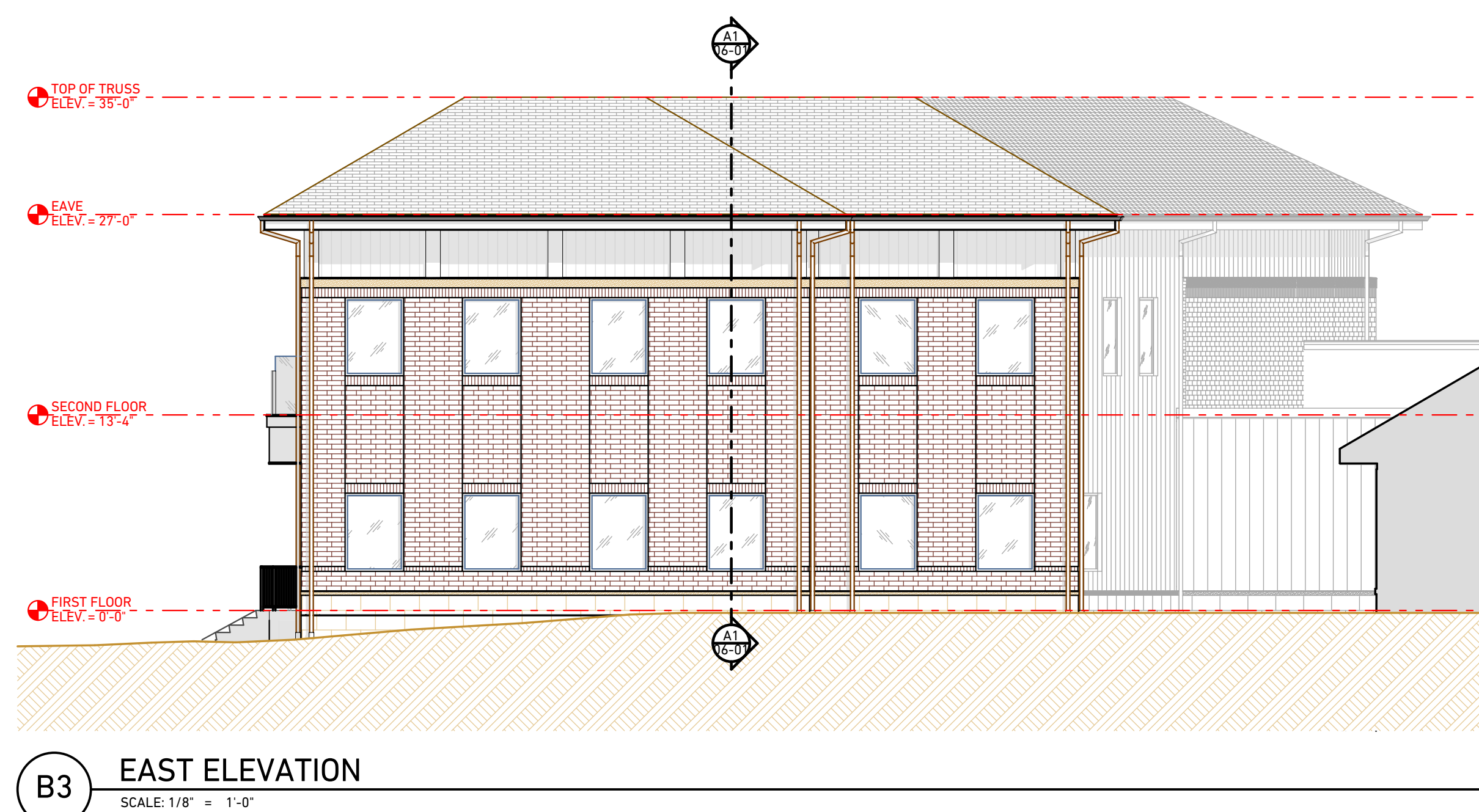
EXTERIOR ELEVATIONS

05-01



EXTERIOR ELEVATION LEGEND

- UTILITY FACE BRICK 1-3 RUNNING BOND. BELDEN BELCREST 560 TO MATCH EXISTING BUILDING
- METAL WALL PANEL 8" FLUSH PANEL
- PRECAST CONC UNITS (MATCH EXISTING)
- CONCRETE UNIT MASONRY 16" x 24" ROCK FACE (MATCH EXISTING)
- ASPHALT SHINGLES
- EXPOSED CONCRETE
- EXISTING EXTERIOR MATERIAL TO REMAIN (SHOWN SHADED AND NOTED)
- INDICATES FLOOR ELEVATIONS; TOP OF STEEL (T.O.S.); TOP OF MASONRY (T.O.M.); ELEVATIONS (REFER TO STEEL FRAMING DRAWINGS, BUILDING SECTIONS AND WALL SECTIONS ALSO FOR MORE INFORMATION)





not published; all rights reserved

DRAWING UPDATES

05-02

SCALE: 1/8" = 1'-0"



**DRAWING SCALE
APPLIES WHEN
PRINTED FULL
SIZE AT 24"x36"**

not published; all rights reserved

750 W Streetsboro St
Hudson, OH, 44236

PLANNING COMMISSION SUBMISSION

DRAWING UPDATES



04-01





**DRAWING SCALE
APPLIES WHEN
PRINTED FULL
SIZE AT 24"x36"**

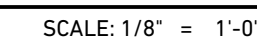
not published; all rights reserved

750 W Streetsboro St
Hudson, OH, 44236

PLANNING COMMISSION SUBMISSION

DRAWING UPDATES

04-02



6,812 SF GROSS FLOOR AREA



**DRAWING SCALE
APPLIES WHEN
PRINTED FULL
SIZE AT 24"x36"**

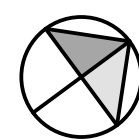
published; all rights reserved

750 W Streetsboro St
Hudson, OH, 44236

PROJECT No.	24.001
-------------	--------

DRAWING UPDATES

EX-01



SCALE: 1/16" = 1'-0"



**DRAWING SCALE
APPLIES WHEN
PRINTED FULL
SIZE AT 24"x36"**

published; all rights reserve

750 W Streetsboro St
Hudson, OH, 44236

PROJECT No.	24.001
-------------	--------

DRAWING UPDATES

EX-00



SCALE: 1/16" = 1'-0"

PRELIMINARY
NOT FOR
CONSTRUCTION

DRAWING SCALE
APPLIES WHEN
PRINTED FULL
SIZE AT 24"x36"

not published; all rights reserved

CHRIST COMMUNITY CHAPEL OFFICE ADDITION

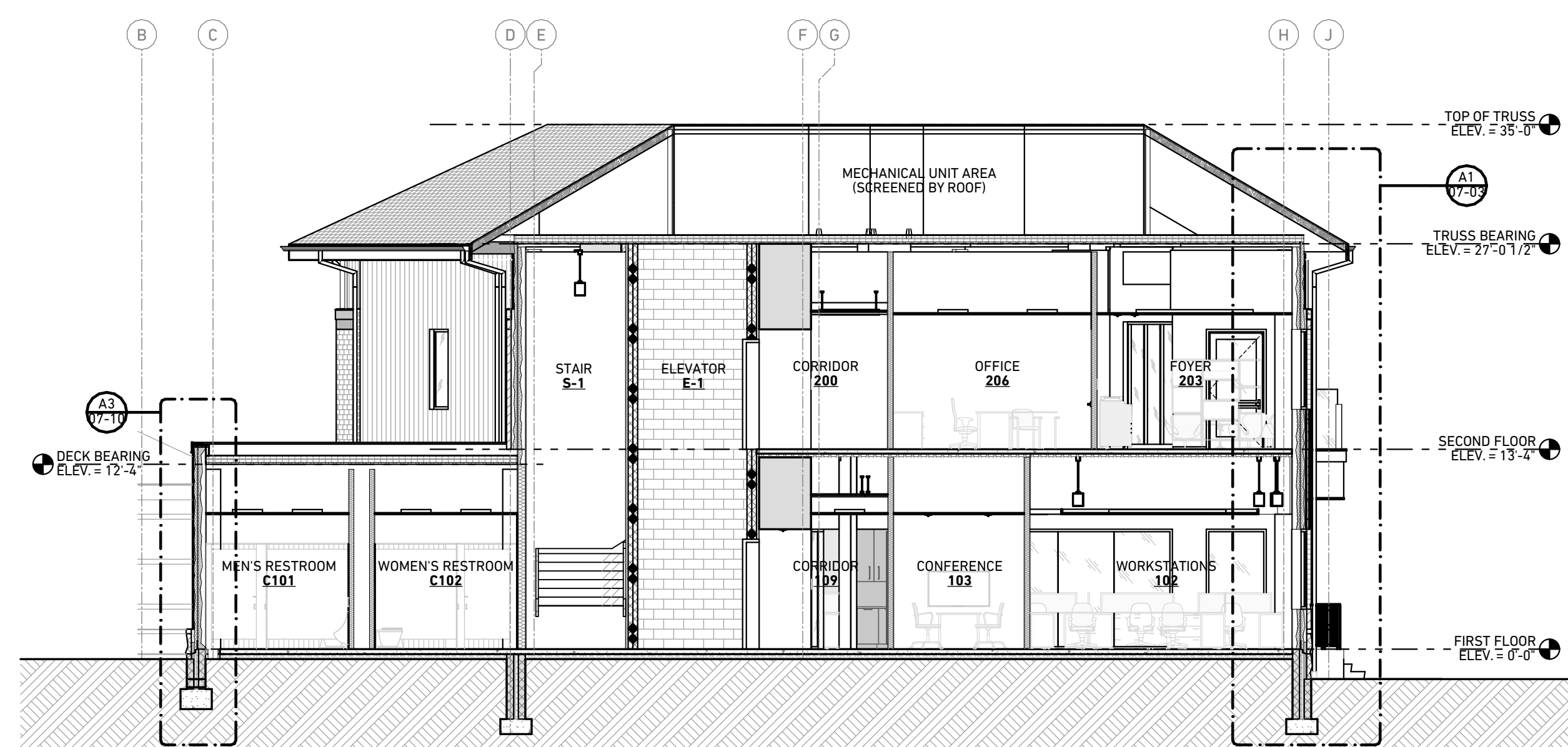
750 W Streetsboro St
Hudson, OH, 44236

PROJECT No.

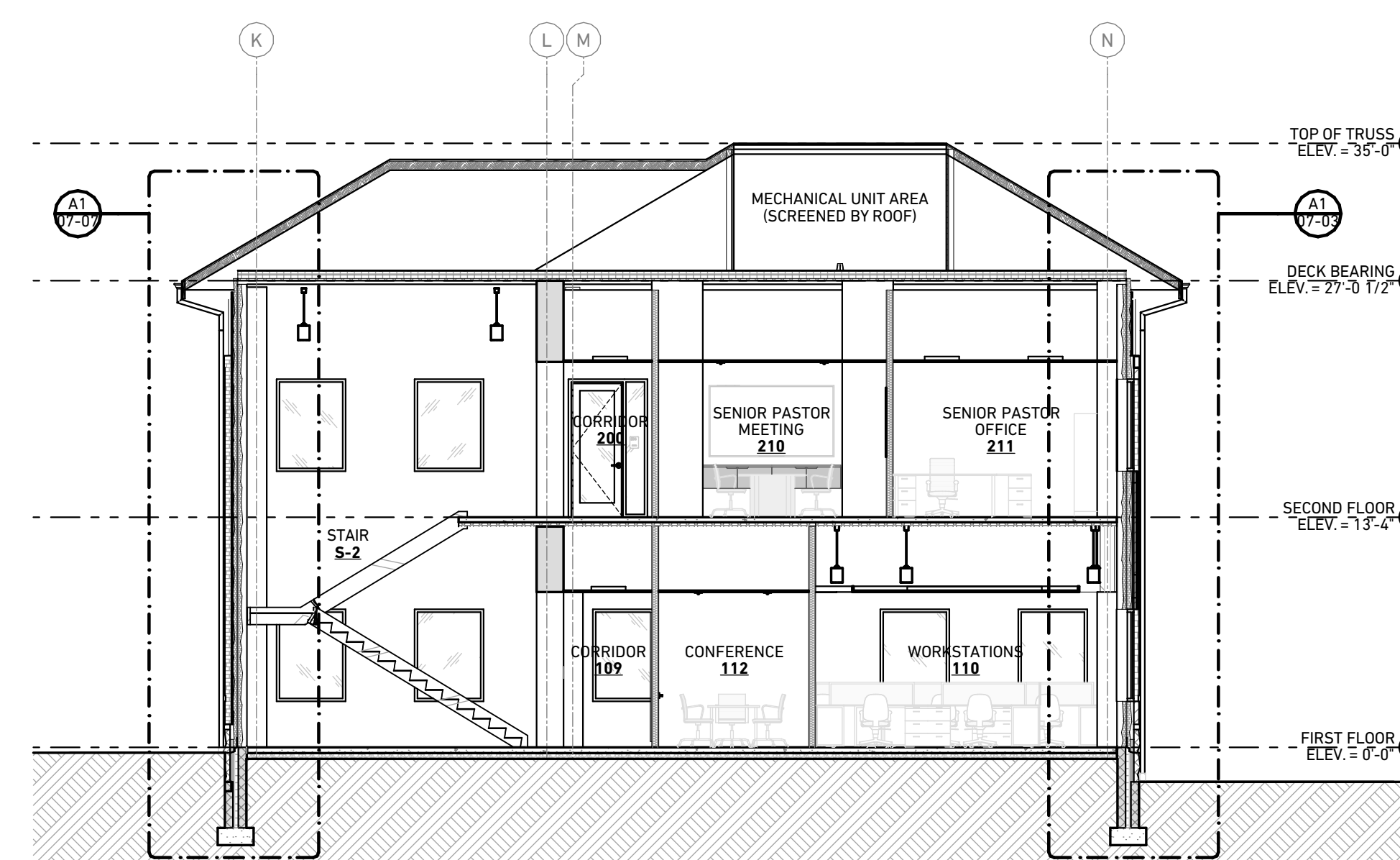
24.001

PLANNING COMMISSION SUBMISSION

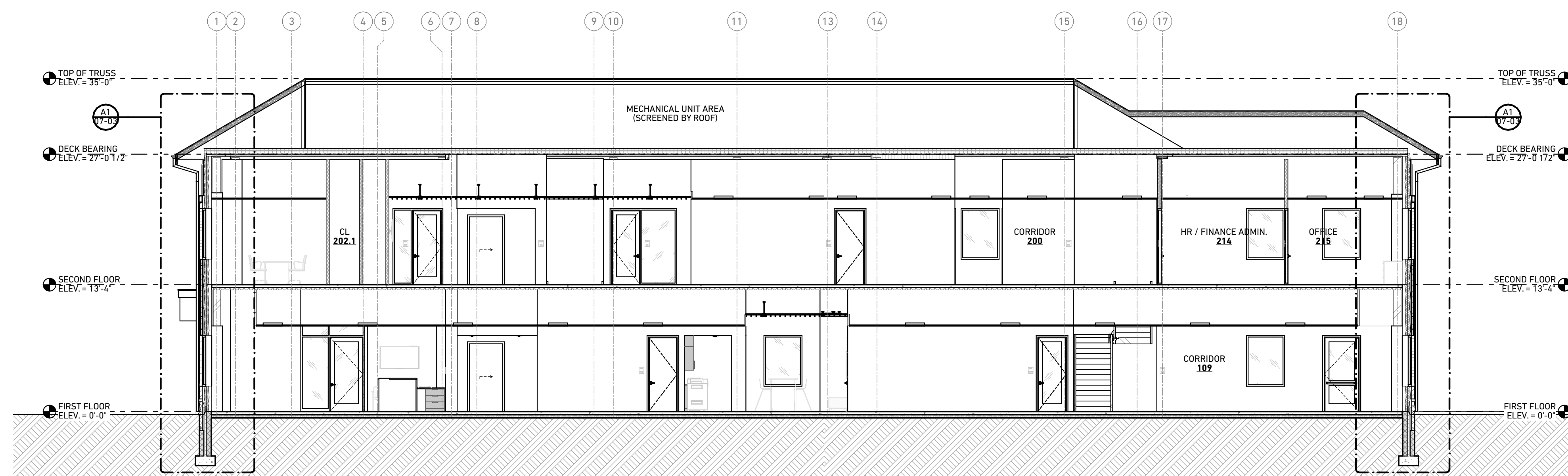
DRAWING UPDATES



B2 BUILDING SECTION
SCALE: 1/8" = 1'-0"



B1 BUILDING SECTION
SCALE: 1/8" = 1'-0"



A1 BUILDING SECTION
SCALE: 1/8" = 1'-0"

BUILDING SECTIONS

06-01