



COMMUNITY DEVELOPMENT • 1140 Terex Road • Hudson, Ohio 44236 • (330) 342-1790

Date: July 13, 2021

To: Mayor Shubert and City Council

From: Nick Sugar, City Planner, Susan Chapman, Business Operations Manager, Emily Fernandez, Data Management Analyst, David Jordan, Community Development Intern

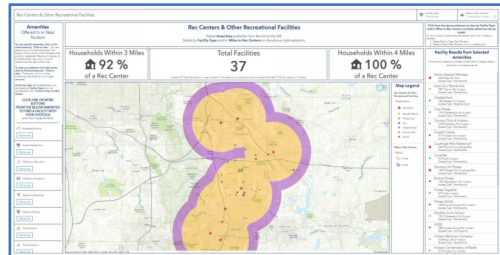
CC: Jane Howington, City Manager, Thomas J. Sheridan, Asst City Manager; Greg Hannan, Community Development Director

Re: Hudson Recreation Facilities Inventory

Background

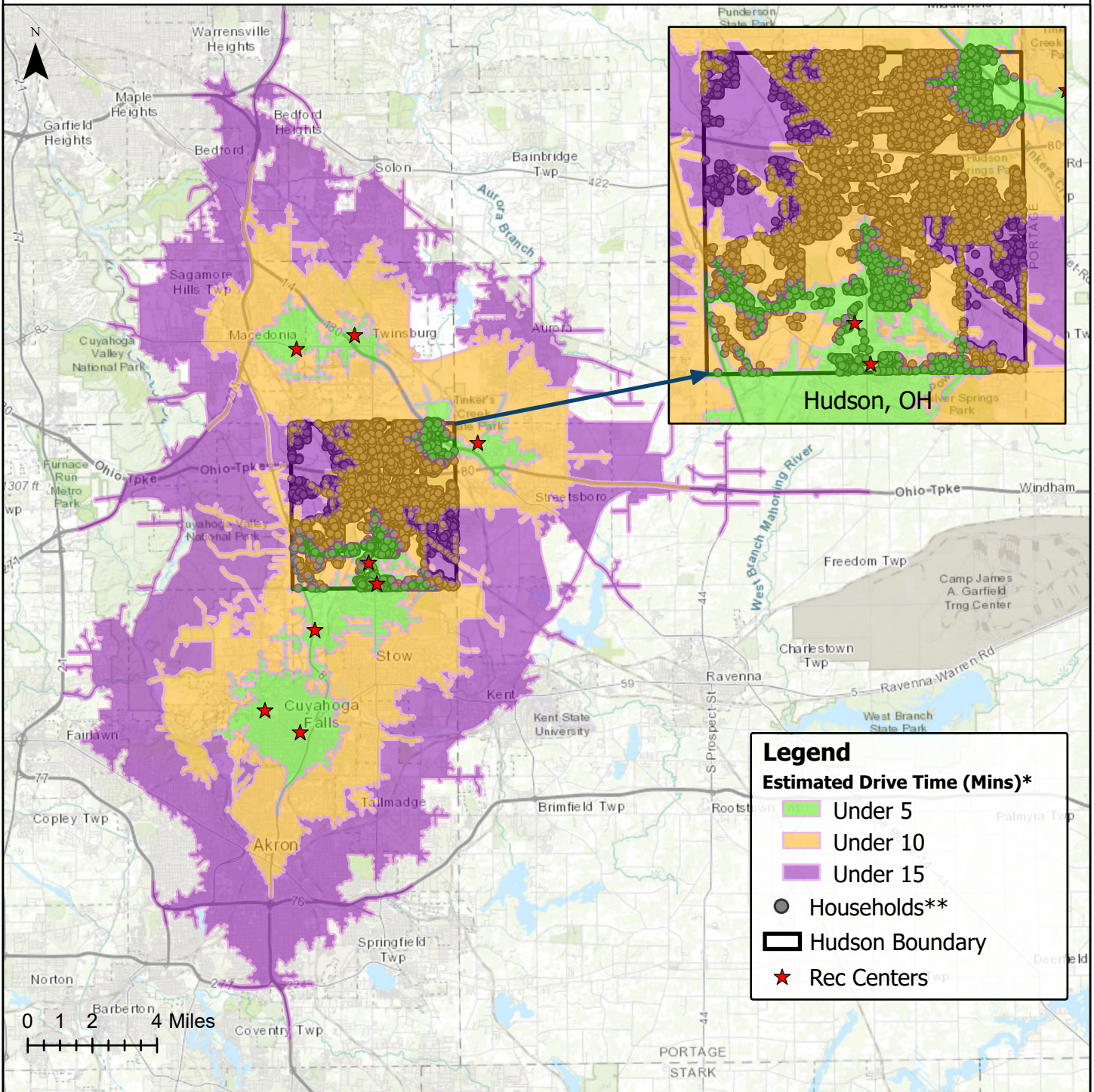
Based on Council discussion and direction from the May 25, 2021 workshop, staff has prepared an inventory of recreational facilities within and in close proximity to the city. This preliminary data collection is intended to help initiate discussion on the topic and could supplement an expanded effort.

Contents:

- **Inventory Spreadsheet:** The attached spreadsheet inventoried a variety of facility types with amenities offered. Included facility types range from small single-use fitness clubs to large regional multipurpose rec centers. Common amenities were inventoried, including cardio equipment, weight training, and indoor/outdoor pools.
- **Interactive Map:** An online interactive map was created to display the contents of the inventory spreadsheet. Locations can be displayed based on facility type or amenity. Staff will provide a tutorial overview of the map during Council discussion. The map can be accessed by clicking the image to the right.A screenshot of a web-based interactive map titled "Rec Centers & Other Recreational Facilities". The map shows a geographical area with a yellow highlighted region. Above the map, there are statistics: "Households Within 2 Miles of a Rec Center" at 92%, "Total Facilities" at 37, and "Households Within 4 Miles of a Rec Center" at 100%. The map interface includes a search bar, a legend, and a list of facilities on the right side.
- **Drive Time Map:** A static map was created depicting approximate drive times to multipurpose rec centers from Hudson households. The map studies the number of households within 5 minute, 10 minute, and 15 minute drives. This level of analysis could be applied to any facility or amenity type.

Drive Time to Rec Centers From Hudson Households

Drive Time (Mins)	Households	Percentage	Cumulative
Under 5	1902	24%	24%
Under 10	5503	69%	93%
Under 15	600	7%	100%



Notes

* Drive times based on typical traffic conditions at 5 p.m. on a Tuesday. Source: Esri

** Households include any Hudson residential address.