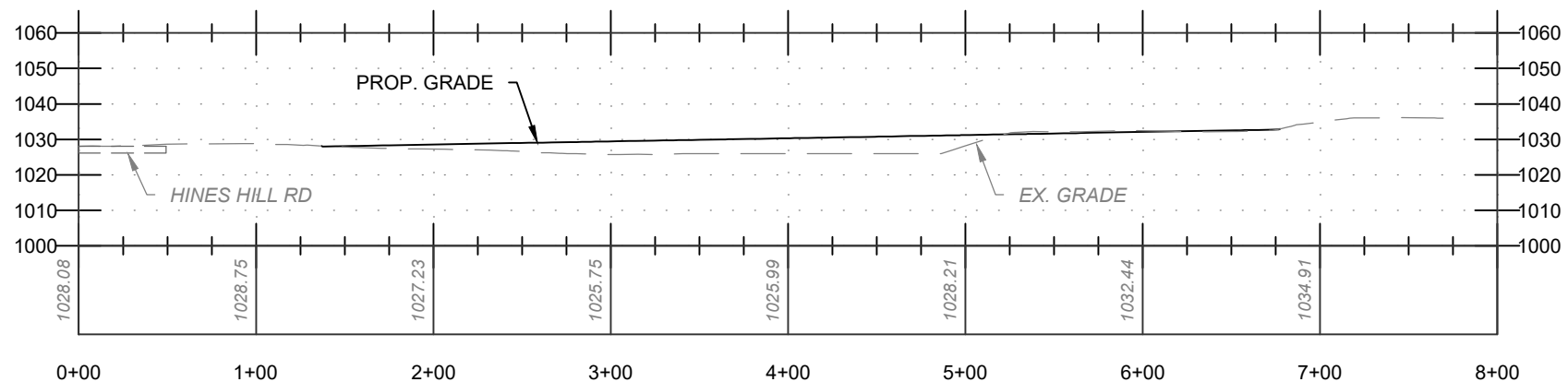


YDC OPTION A



SECTION A - A

PLAYGROUND SIZE: 2.0 ACRES

TOTAL PARCEL AREA: 7.8 ACRES

MINIMUM REQUIREMENTS FOR PARKING LOT PER ITE PARKING GENERATION MANUAL 3RD EDITION :

TOTAL NUMBER OF SPACES: 30 SPACES

TOTAL NUMBER OF HANDICAP ACCESSIBLE SPACES: 2 SPACES

TOTAL NUMBER OF NON-HANDICAP ACCESSIBLE SPACES: 28 SPACES

PROPOSED PARKING LOT:

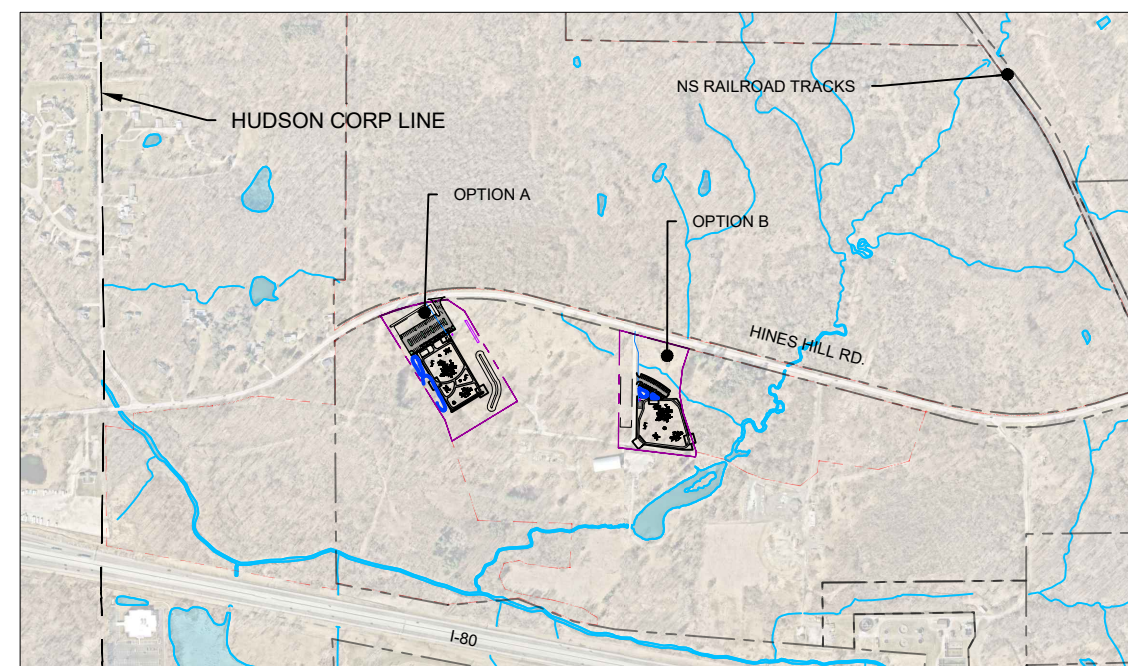
TOTAL NUMBER OF SPACES: 83 SPACES

TOTAL NUMBER OF HANDICAP ACCESSIBLE SPACES: 14 SPACES

TOTAL NUMBER OF NON-HANDICAP ACCESSIBLE SPACES: 69 SPACES

NOTES:

1. PROPOSED PLAYGROUND EQUIPMENT, PLAYGROUND SURFACES AND WALKING TRAILS WITHIN FENCED IN AREA ARE SHOWN FOR CONCEPTUAL PURPOSES ONLY AND ARE **NOT INCLUDED IN ESTIMATES**.
2. SUMMIT COUNTY DEPARTMENT OF SANITARY SEWER SERVICES HAS DISCUSSED INSTALLING A NEW SANITARY LINE ALONG HINES HILL ROAD IN THE NEXT 3-5 YEARS WHICH CAN BE TIED INTO AT A LATER DATE
3. HINES HILL SITE OPTION A, HAS THE POTENTIAL FOR FUTURE EXPANSION TO THE SOUTH OF THE PARCEL



SITE VICINITY MAP

SCALE: 1"=100'

CITY OF HUDSON
ENGINEERING DEPARTMENT
1140 TEREX ROAD
HUDSON, OH 44236
(330)-342-1770

INCLUSIVE
PLAYGROUND
EXHIBITS

DESCRIPTION:	REV. #	DATE:

YDC OPTION A EXHIBIT

CALCULATED	XXX
CHECKED	XXX

SHEET 1 OF 4