



NORTHEAST OHIO REGIONAL SEWER DISTRICT



REGIONAL
STORMWATER
MANAGEMENT
PROGRAM

Regional Stormwater Management Program:

Flooding, Erosion, and Water Quality

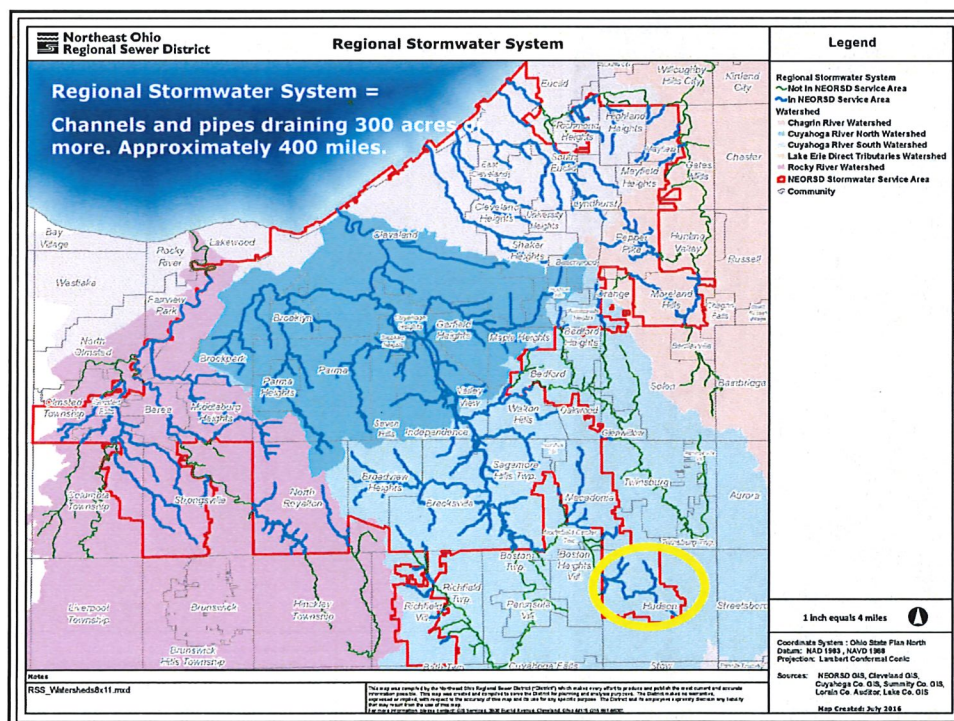
Stormwater Service Agreement

City of Hudson



Your Sewer District Keeping our Great Lake great.

 #stormwaterprogram



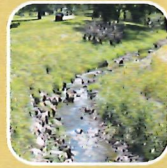
Regional Stormwater Management Program



SW
Master
Plans



Inspect &
Maintain



Construct
Projects



Encourage
Good
Practices



Your Sewer District Keeping our Great Lake great.



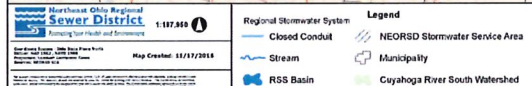
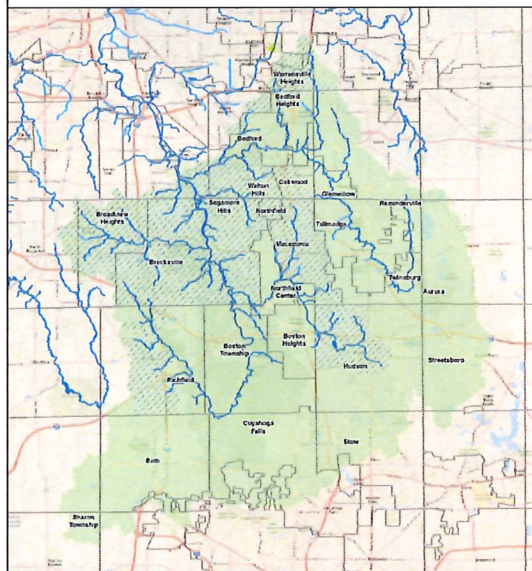
Stormwater Master Plan – Cuyahoga River South

September 2016 –
October 2018



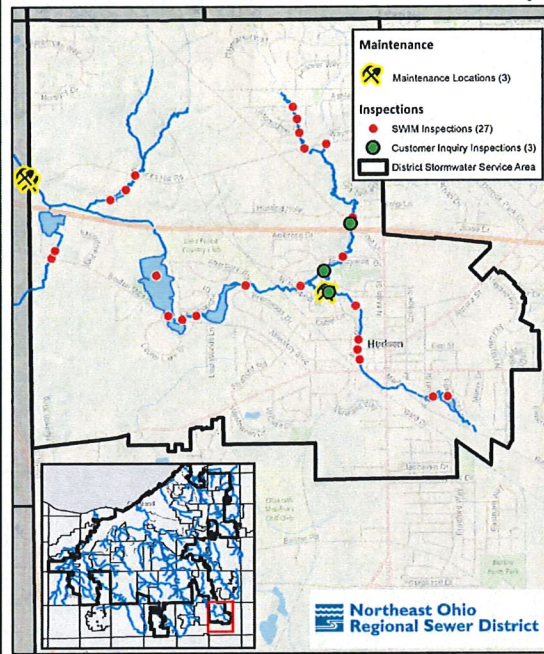
Your Sewer District Keeping our Great Lake great.

Cuyahoga River South Stormwater Master Plan



Stormwater Inspection and Maintenance in Hudson

2016 NEORSD Stormwater Inspections & Maintenance in Hudson, Ohio





Regional Stormwater Management Program

Estimated revenue of \$41M/year from impervious surface fee

- Inspection and Maintenance
- Stormwater Master Plan
- Construction



Your Sewer District Keeping our Great Lake great.



#stormwaterprogram

How a Stormwater Fee is Determined

- Impervious Surface Area (IA)

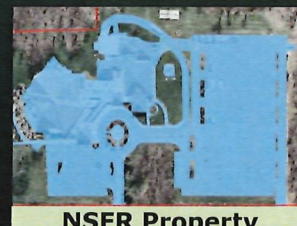
➤ *Billing Unit = Equivalent Residential Unit (ERU)*



SFR Property

- Property Classification

- *Residential*
- *Non-Residential*



NSFR Property

**2016 Base Rate =
\$5.15 per ERU/month
Billing to begin second half 2016**

Residential Stormwater Fee

- Tier 1 (below 2000 sq. ft. IA)
 - **\$3.09/month**
 - **\$9.27/quarter**
- Tier 2 (2000-4000 sq. ft. IA)
 - **\$5.15/month**
 - **\$15.45/quarter**
- Tier 3 (above 4000 sq. ft. IA)
 - **\$9.27/month**
 - **\$27.81/quarter**



Your Sewer District Keeping our Great Lake great.



Tier 1 SFR



Tier 2 SFR



Tier 3 SFR

Non-Residential Stormwater Fee




Measured Impervious Surface
Roof + parking lot = 120,000 sq. ft.

- 1 ERU = 3,000 sq. ft.
- 120,000 sq. ft./3,000 sq. ft.
= 40 ERUs
- 40ERUs * \$5.15/month
= \$206/month
= \$618/quarter



Your Sewer District Keeping our Great Lake great.

 #stormwaterprogram

Stormwater Fee and Credits

- **CUSTOMER SERVICE**

- 216.881.8247

- **RESIDENTIAL CREDITS**

- Rachel Webb | 216.881.6600 x6645 | webbr@neorsd.org

- **NON-RESIDENTIAL/HOA CREDITS**


- Chris Hartman | 216.881.6600 #6656 | hartmanc@neorsd.org

www.neorsd.org/stormwater

www.neorsd.org/findmyfee



Your Sewer District Keeping our Great Lake great.

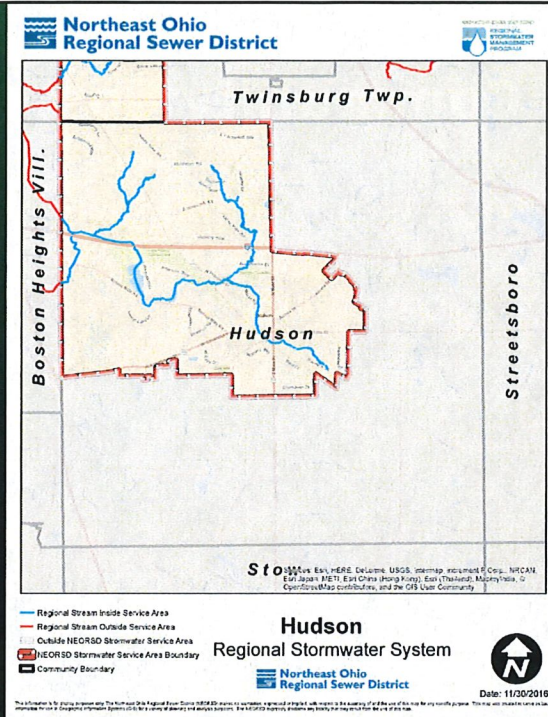
 #stormwaterprogram

RSMP Service Agreement

Services Performed by the District

- Inspection, operation and maintenance of the Regional Stormwater System
- Emergency response to maintain Regional Stormwater System
- Stormwater construction activities to address problems beyond maintenance
- Stormwater Master Plan – Cuyahoga River South (currently underway)
- NPDES Phase II compliance support beginning 2017

Stormwater Service Area & Regional Stormwater System



RSMP Service Agreement

Member Community Obligations

- Comply with Title V
- Provide access through public ROWs
- Provide available data for plan reviews
- Representation on Watershed Advisory Committees
- Cooperate with permits, easements, ROE, traffic control

Community Cost-Share

- 25% of annual Stormwater Fee revenue collected in each Member Community
 - Current Balance: **\$77,569.95**
 - Projected Annually: **\$110,000** (90% collection)
- Address current, or minimize new stormwater flooding, erosion or water quality problems

Questions

Frank Greenland

Director of Watershed
Programs
greenlandf@neorsd.org

Katie Waag

Assistant General Counsel
waagk@neorsd.org

Joseph Jenkins


Government Affairs
Specialist
jenkinsj@neorsd.org

Rachel Webb

Senior Watershed Team
Leader
webbr@neorsd.org



Your Sewer District Keeping our Great Lake great.

 #stormwaterprogram