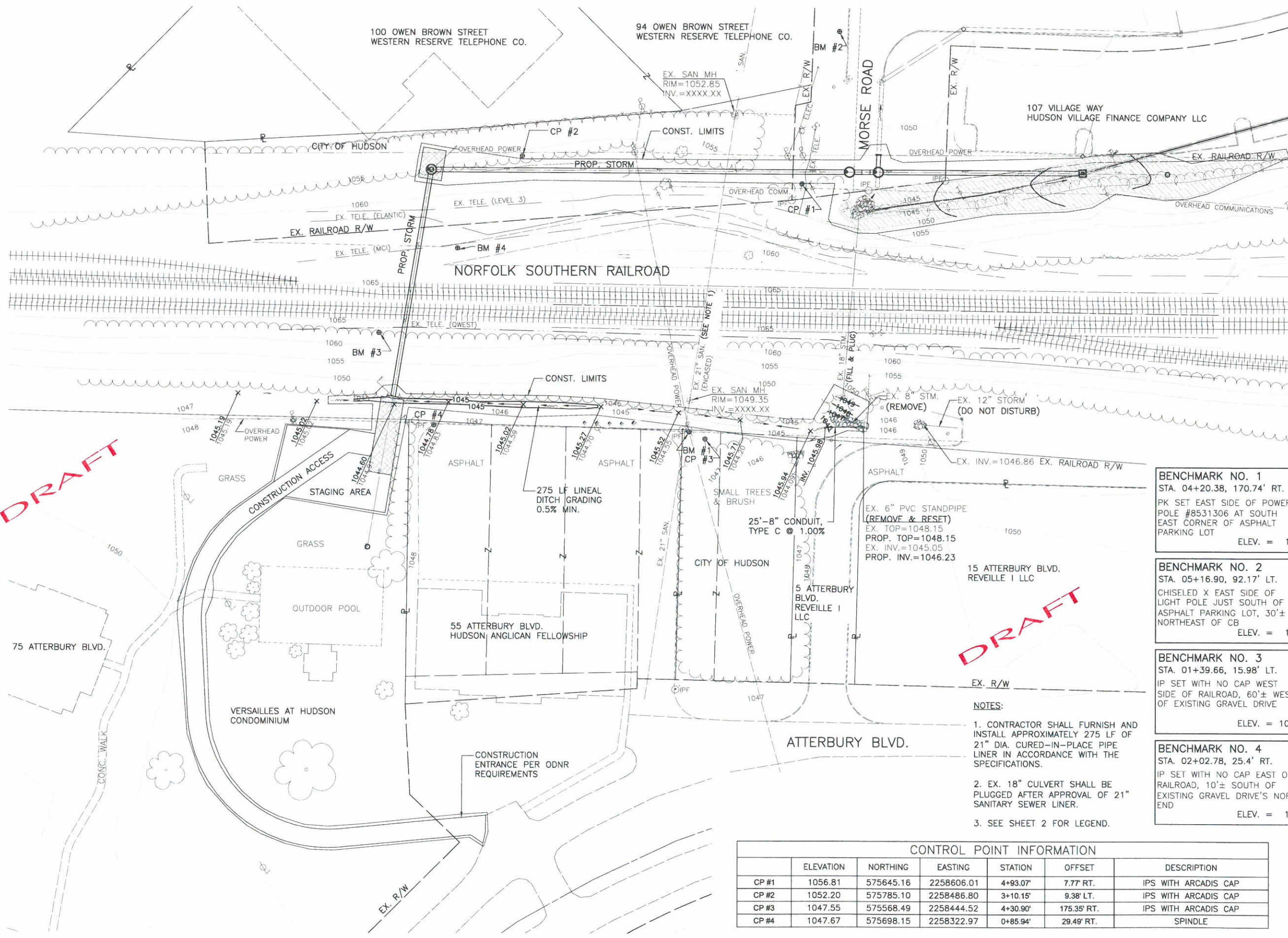


UPSTREAM GRADING AND SCHEMATIC PLAN

DOWNTOWN RAILROAD
CULVERT IMPROVEMENT

DRAFT

DRAFT



BENCHMARK NO. 1
STA. 04+20.38, 170.74' RT.
PK SET EAST SIDE OF POWER
POLE #8531306 AT SOUTH
EAST CORNER OF ASPHALT
PARKING LOT
ELEV. = 1049.93

BENCHMARK NO. 2
STA. 05+16.90, 92.17' LT.
CHISELED X EAST SIDE OF
LIGHT POLE JUST SOUTH OF
ASPHALT PARKING LOT, 30'±
NORTHEAST OF CB
ELEV. = 1049.96

BENCHMARK NO. 3
STA. 01+39.66, 15.98' LT.
IP SET WITH NO CAP WEST
SIDE OF RAILROAD, 60'± WEST
OF EXISTING GRAVEL DRIVE
ELEV. = 1062.56

BENCHMARK NO. 4
STA. 02+02.78, 25.4' RT.
IP SET WITH NO CAP EAST OF
RAILROAD, 10'± SOUTH OF
EXISTING GRAVEL DRIVE'S NORTH
END
ELEV. = 1060.88

- NOTES:**
1. CONTRACTOR SHALL FURNISH AND INSTALL APPROXIMATELY 275 LF OF 21" DIA. CURED-IN-PLACE PIPE LINER IN ACCORDANCE WITH THE SPECIFICATIONS.
 2. EX. 18" CULVERT SHALL BE PLUGGED AFTER APPROVAL OF 21" SANITARY SEWER LINER.
 3. SEE SHEET 2 FOR LEGEND.

CONTROL POINT INFORMATION						
CP #	ELEVATION	NORTHING	EASTING	STATION	OFFSET	DESCRIPTION
CP #1	1056.81	575645.16	2258606.01	4+93.07'	7.77' RT.	IPS WITH ARCADIS CAP
CP #2	1052.20	575785.10	2258486.80	3+10.15'	9.38' LT.	IPS WITH ARCADIS CAP
CP #3	1047.55	575568.49	2258444.52	4+30.90'	175.35' RT.	IPS WITH ARCADIS CAP
CP #4	1047.67	575698.15	2258322.97	0+85.94'	29.49' RT.	SPINDLE

DATE : 5/16/05
CAD FILE : RCP01002
OPERATOR : BBK
PLOT SCALE : 1:1