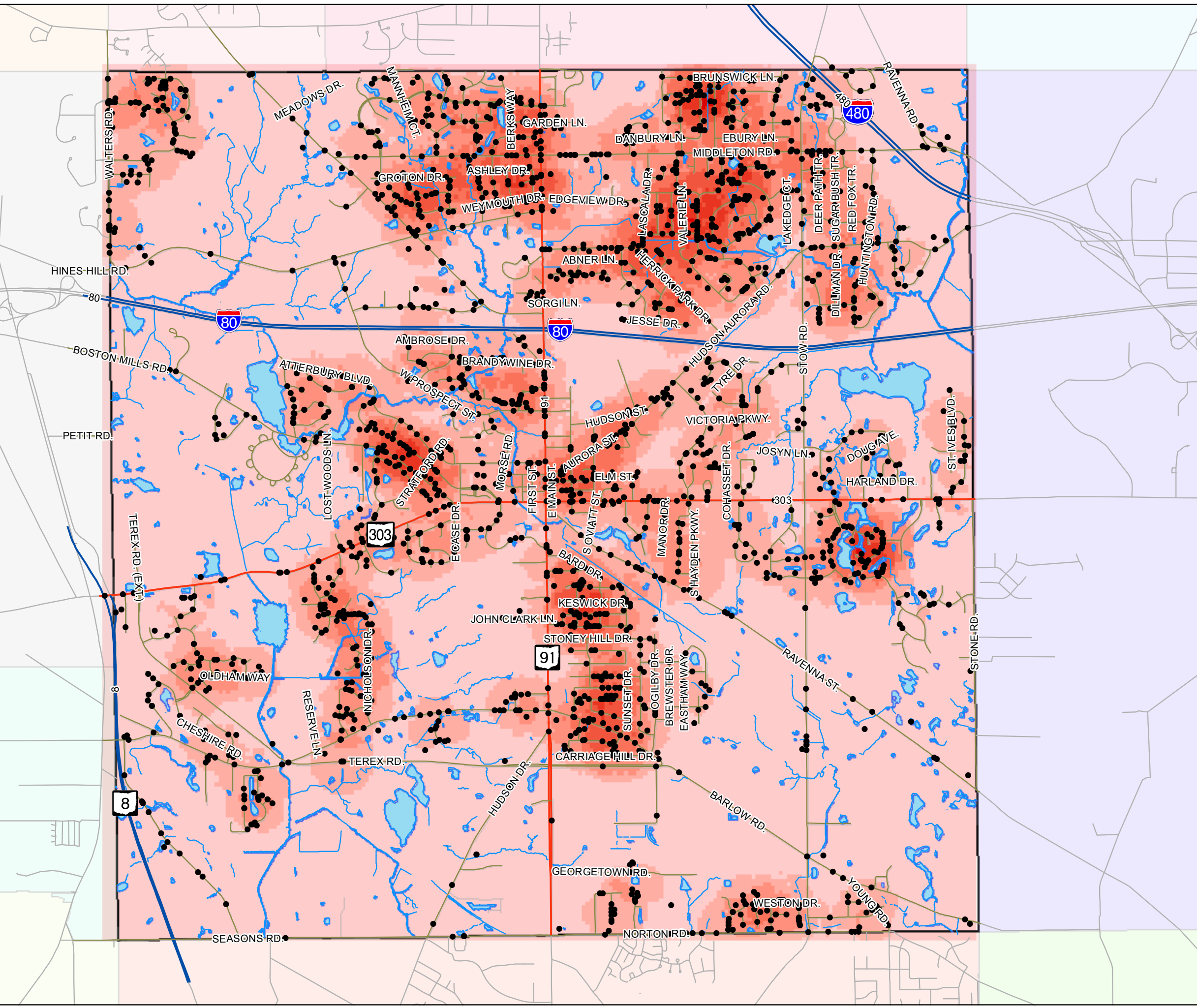


**Completed Storm Water
Work Orders Since
July 21st, 2003
Total: 2734**



- Completed Storm Water Work Orders
- Rivers & Streams
- Lakes & Ponds

Work Orders per Sq. Mile

0 - 95
95.1 - 188
188.1 - 283
283.1 - 377
377.1 - 472
472.1 - 566
566.1 - 660

Created by the Hudson GIS Department.
Date: 5/22/2013

N

Miles