

SR 91 & SR 303 Curb Radius Review

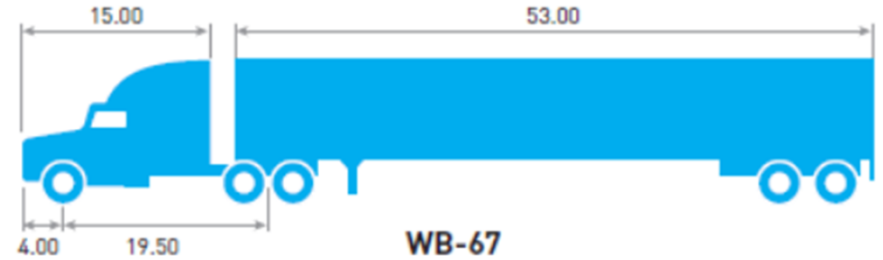
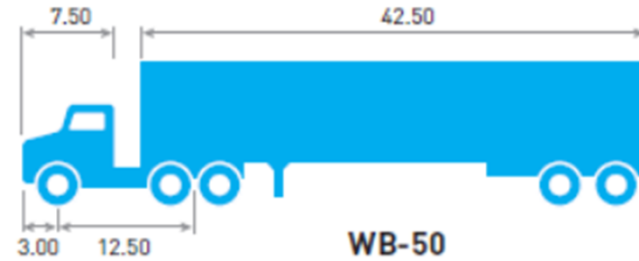
October 28, 2025 - City of Hudson Engineering Department

Existing Intersection

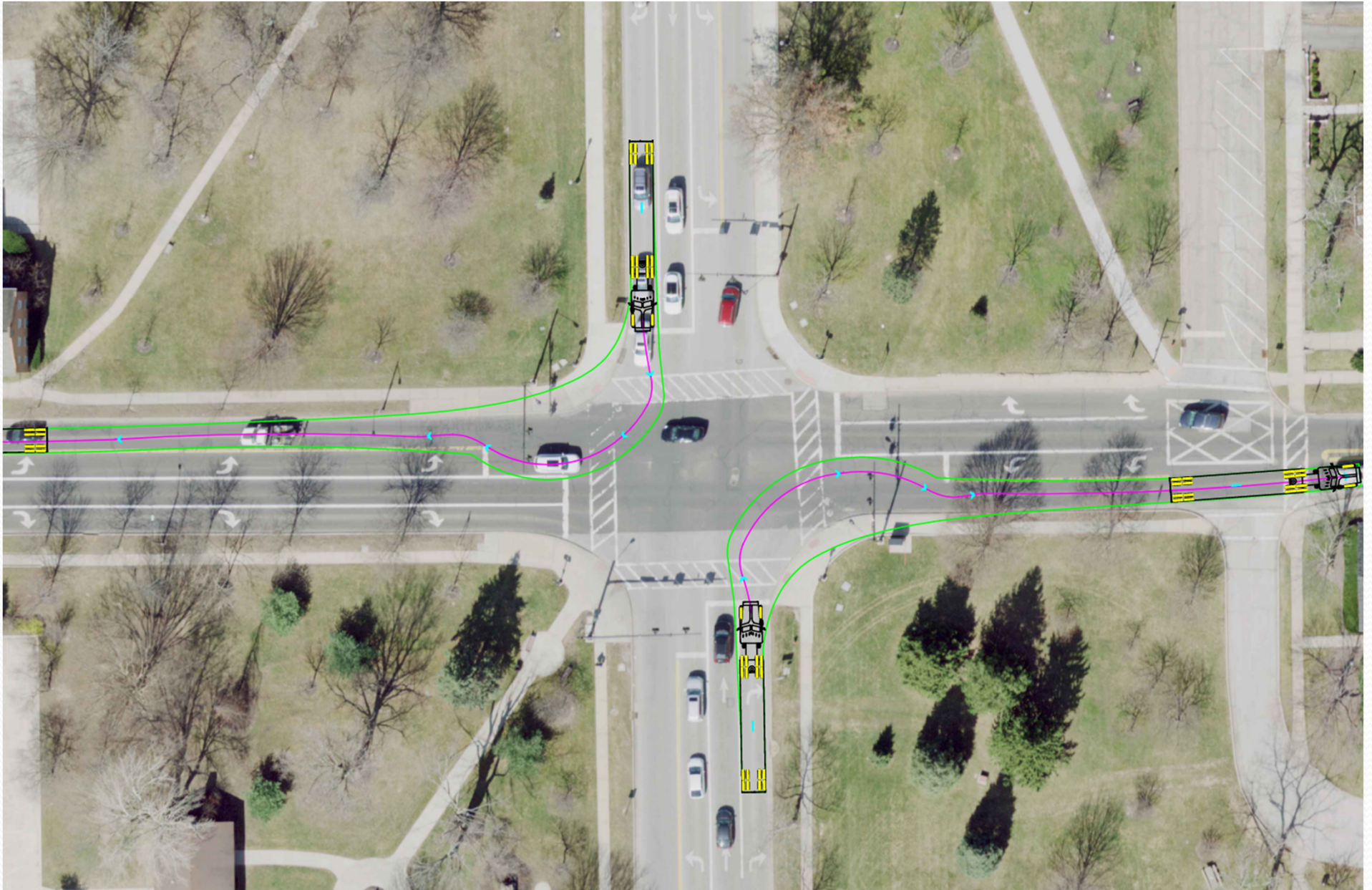


Truck Turning over Curb Ramps

- Larger vehicles including busses and trucks have difficulty making turning movements at intersection due to tight curb radii.
- Most common type of trucks using intersection:
- Example Photos of issue:

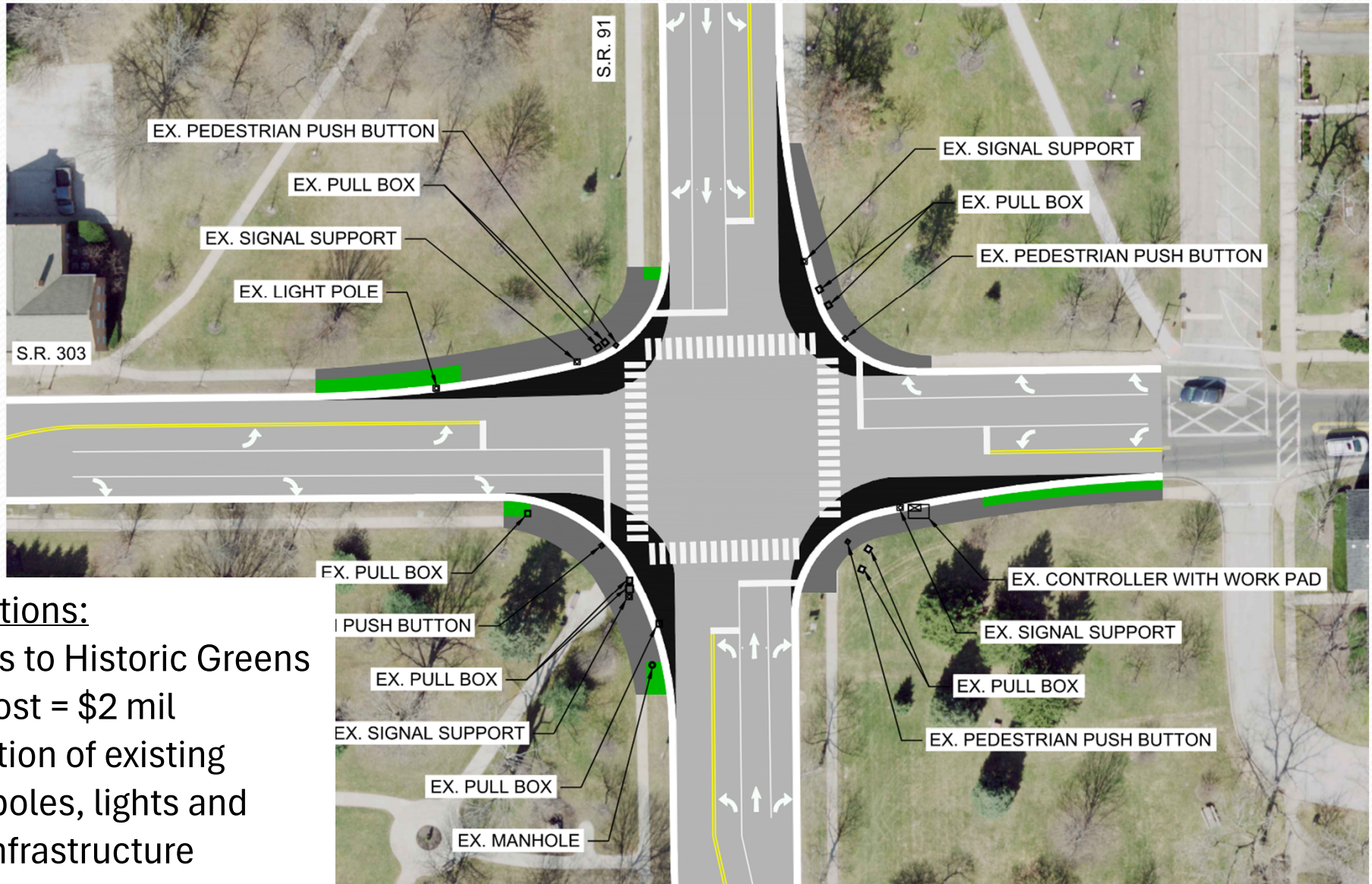


Truck Turning over Curb Ramps



Potential Improvements

Full Design to Accommodate Large Trucks

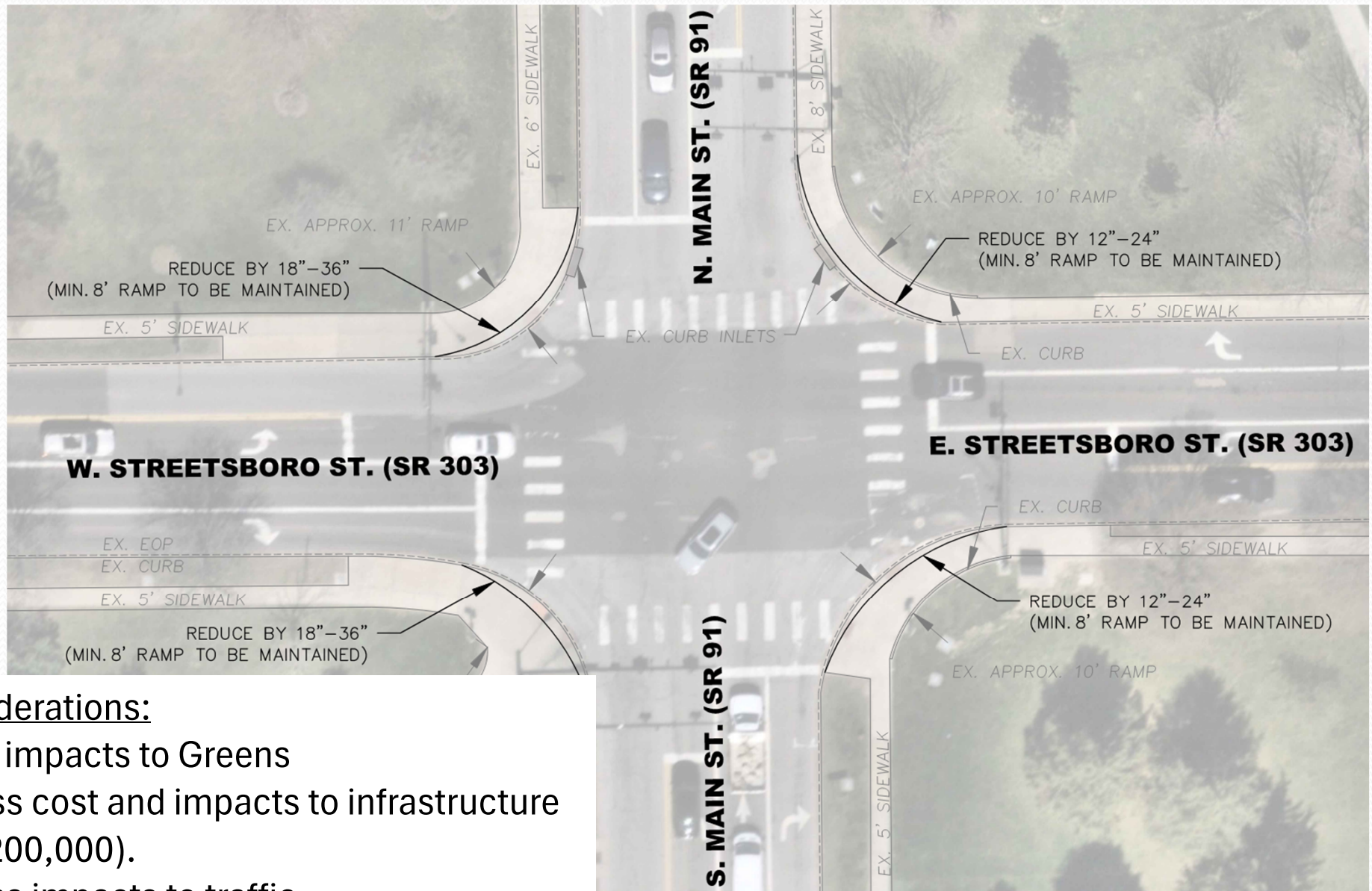


Considerations:

- Impacts to Historic Greens
- High Cost = \$2 mil
- Relocation of existing signal poles, lights and other infrastructure
- Large Traffic Impacts

Potential Improvements

Previous Study - Smaller Adjustments to Existing Curb Radius

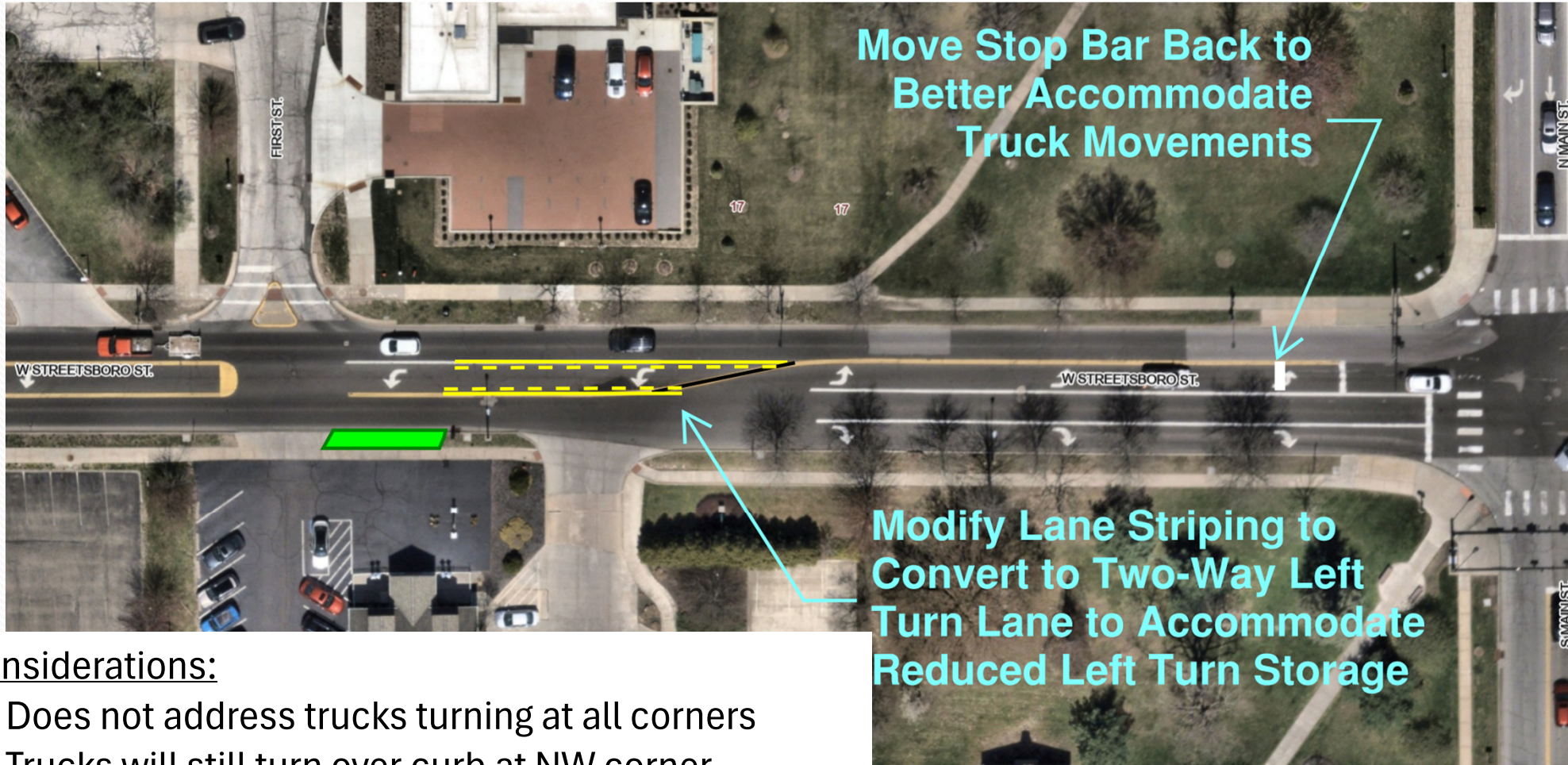


Considerations:

- No impacts to Greens
- Less cost and impacts to infrastructure (\$200,000).
- Less impacts to traffic
- Trucks will still run over curb ramps

Potential Improvements

Striping Adjustments to Accommodate Truck Turning Movement and 303 to 91 Left Turn Storage



Considerations:

- Does not address trucks turning at all corners
- Trucks will still turn over curb at NW corner
- Potential impacts to commercial properties on south side of W. Streetsboro Rd
- Could complete with other planned pedestrian improvements along this section of 303

E. Case Dr, W. Case Dr, Hartford Rd. and Milford Rd. Speed & Traffic Volumes

Road	Study Year	Value	Avg Speed (mph)	85th %ile Speed (mph)
E. Case Dr.	May, 2003	448	27	30
E. Case Dr.	May, 2023	629	24	29
E. Case Dr.	October, 2025	267	20	25
W. Case Dr.	May, 2003	216	22	24.8
W. Case Dr.	October, 2025	131	23	28
Hartford Dr.	August, 2003	146	25	29.9
Hartford Dr.	No Recent Count Data Available			
Milford Rd.	2005	3,249*	30.5	35.5
Milford Rd.	July, 2024	6,516	26	30
*Prior to Veterans Way Construction				