





23-057
Ellsworth Meadows Golf Club - New Clubhouse
City of Hudson
1101 Barlow Road, Hudson, Ohio 44236

ISSUE	DATE
1 Preliminary Architectural & Historic Board of Review	2023.10.31



South Elevation



Northwest Elevation



East Elevation



Northeast Elevation

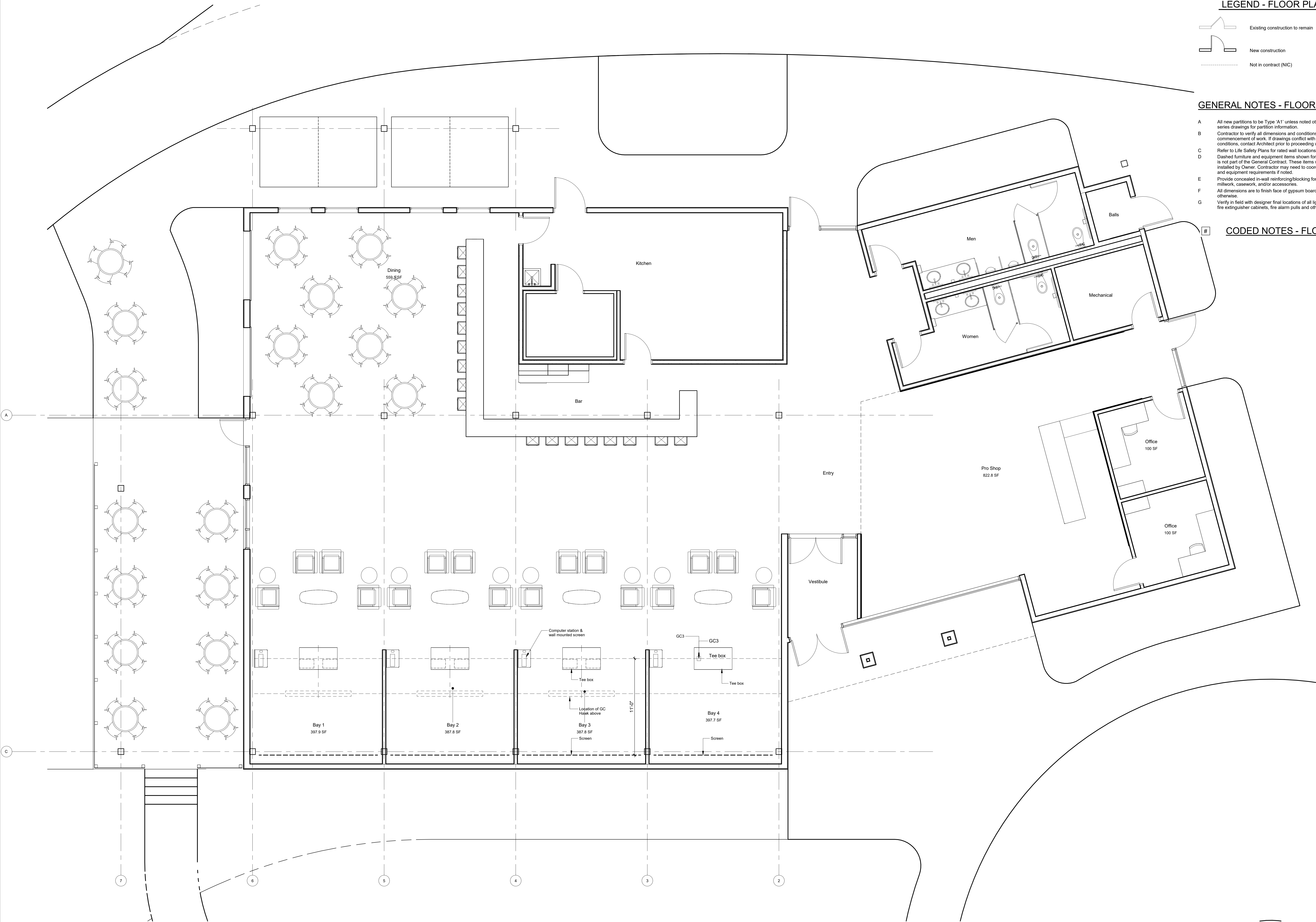
LEGEND - FLOOR PLAN

- Existing construction to remain
- New construction
- Not in contract (NIC)

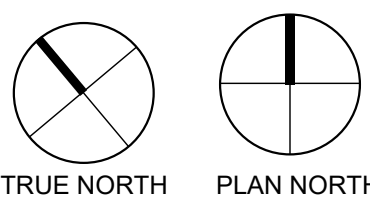
GENERAL NOTES - FLOOR PLAN

- A All new partitions to be Type 'A1' unless noted otherwise. Refer to A6 series drawings for partition information.
- B Contractor to verify all dimensions and conditions in the field prior to commencement of work. If drawings conflict with actual field conditions, contact Architect prior to proceeding with work.
- C Refer to Life Safety Plans for rated wall locations.
- D Dashed furniture and equipment items shown for reference only and is not part of the General Contract. These items will be provided and installed by Owner. Contractor may need to coordinate specific fixture and equipment requirements if noted.
- E Provide concealed in-wall reinforcing/blocking for attachment of all millwork, casework, and/or accessories.
- F All dimensions are to finish face of gypsum board unless noted otherwise.
- G Verify in field with designer final locations of all light switches, strobes, fire extinguisher cabinets, fire alarm pulls and other devices on walls.

CODED NOTES - FLOOR PLAN



1 FIRST FLOOR PLAN
Scale: 1/4" = 1'-0"







ELLSWORTH
MEADOWS