



23-057  
**Ellsworth Meadows Clubhouse**  
City of Hudson  
1101 Barlow Road  
Hudson, Ohio 44236

ISSUE	DATE
Planning Commission	13 nov 2023
ARB Submittal	4 dec 2023

ARCHITECTURAL SITE  
PLAN

GENERAL NOTES - FLOOR PLAN

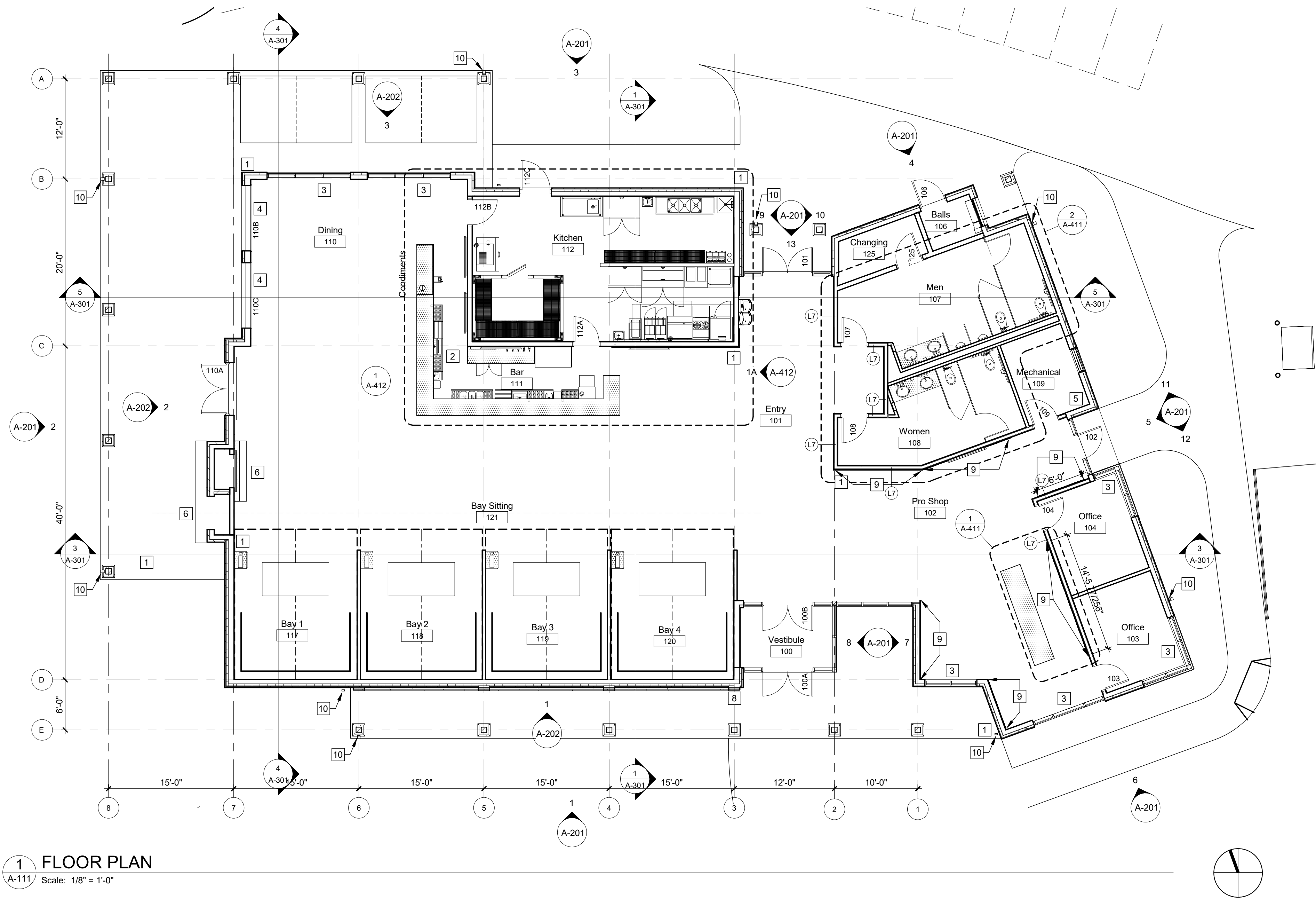
- A All new partitions to be Type 'A1' unless noted otherwise. Refer to A6 series drawings for partition information.
- B Contractor to verify all dimensions and conditions in the field prior to commencement of work. If drawings conflict with actual field conditions, contact Architect prior to proceeding with work.
- C Refer to Life Safety Plans for rated wall locations.
- D Dashed furniture and equipment items shown for reference only and is not part of the General Contract. These items will be provided and installed by Owner. Contractor may need to coordinate specific fixture and equipment requirements if noted.
- E Provide concealed in-wall reinforcing/blocking for attachment of all millwork, casework, and/or accessories.
- F All dimensions are to finish face of gypsum board unless noted otherwise.
- G Verify in field with designer final locations of all light switches, strobes, fire extinguisher cabinets, fire alarm pulls and other devices on walls.

# CODED NOTES - FLOOR PLAN

- 1 Wall mounted security camera
- 2 Ceiling mounted 360 degree security camera
- 3 064023 - 1/2" Solid Surface window stool with bullnose edge
- 4 083613 - Overhead section door
- 5 061600 - 3/4" x 4' x 8' Fire retardant treated plywood panel
- 6 103000 - Gas fireplace insert (FP-1)
- 8 104413 - Fire department lock box
- 9 064023 - Statwall
- 10 077100 - Downspout

LEGEND - FLOOR PLAN

- Existing construction to remain
- New construction
- Not in contract (NIC)



23-057  
**Ellsworth Meadows Clubhouse**  
City of Hudson  
1101 Barlow Road  
Hudson, Ohio 44236

ISSUE  
ARB Submittal

DATE  
4 dec 2023

FLOOR PLAN

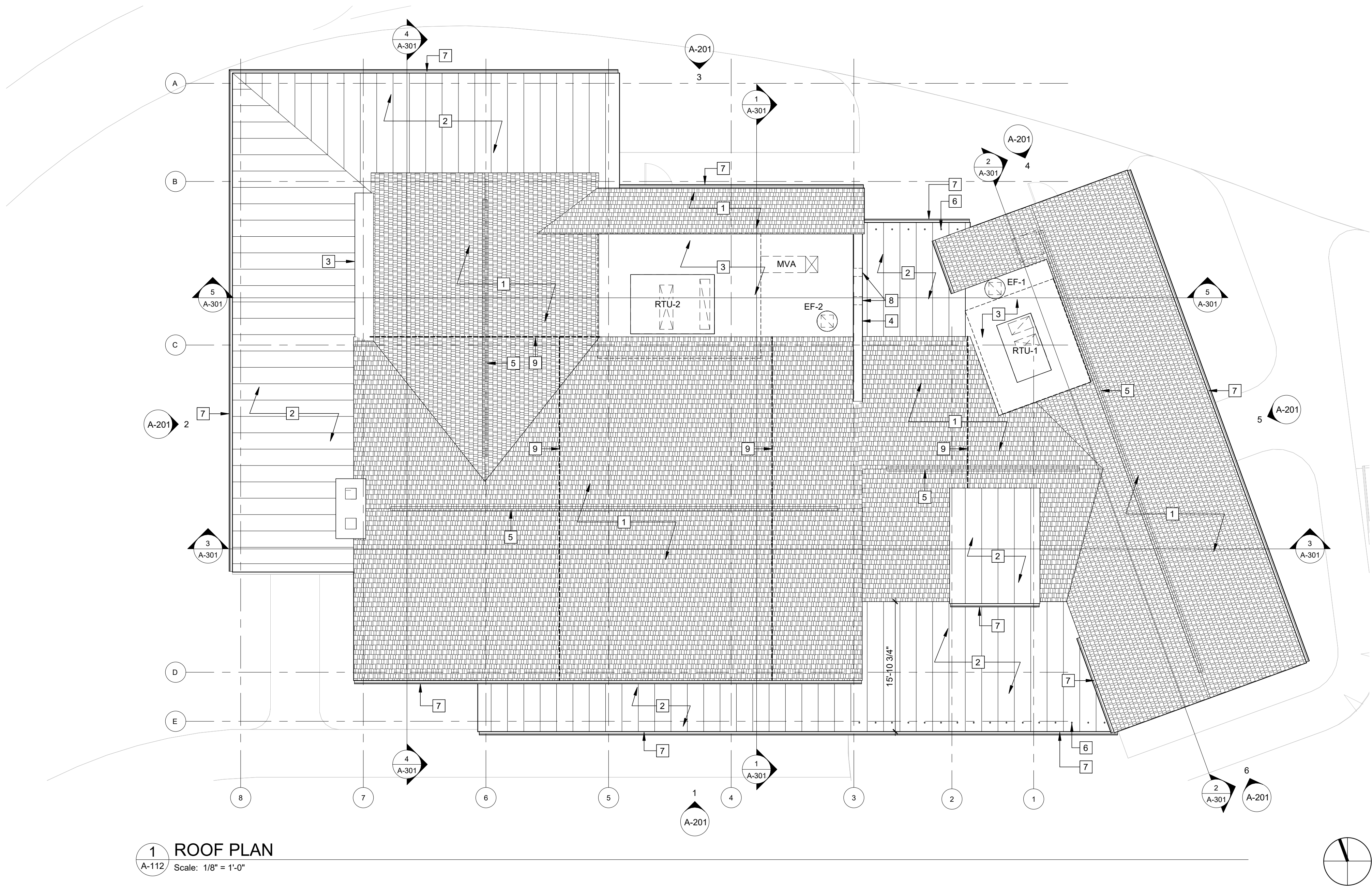
A-111

GENERAL NOTES - ROOF PLAN

A

# CODED NOTES - ROOF PLAN

- 1 073113 - Asphalt shingles
- 2 074113.16 - Standing seam metal roof panels
- 3 075323 - Ethylene propylene diene monomer (EPDM) roofing
- 4 077200 - Metal coping
- 5 073113 - Ridge vent
- 6 074113.16 - Snow guards
- 7 077100 - Aluminum gutters and downspouts
- 8 077200 - Roof overflow scuppers
- 9 Draftstopping assembly, from wall top plate elevation to underside of roof sheathing



1 ROOF PLAN  
A-112 Scale: 1/8" = 1'-0"

23-057  
**Ellsworth Meadows Clubhouse**  
City of Hudson  
1101 Barlow Road  
Hudson, Ohio 44236

ISSUE  
ARB Submittal

DATE  
4 dec 2023

ROOF PLAN



GENERAL NOTES - EXT ELEV

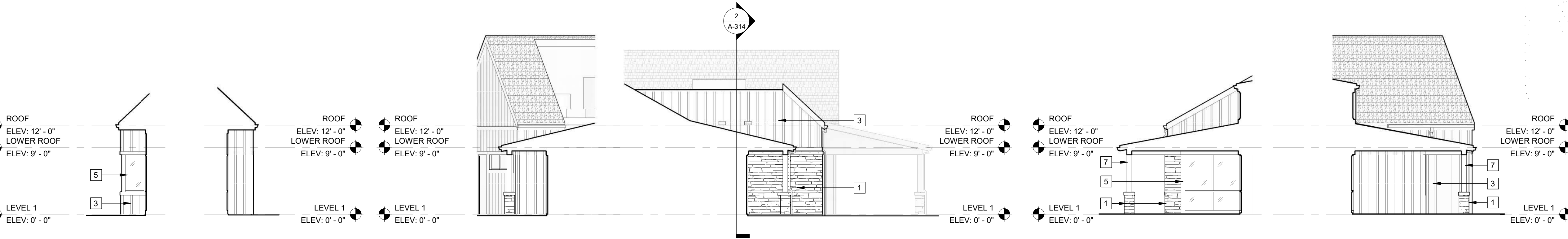
# CODED NOTES - EXT ELEV

- 044313.16 - Adhered stone masonry veneer
- 073113 - Asphalt shingles
- 074646 - Fiber cement board and batten siding (3" batten 12" oc) with 6" trim
- 083613 - Sectional doors
- 085200 - Aluminum clad wood windows and doors
- 074113.16 - Standing seam metal roof panels
- 06#### - Wood support columns and beams
- 103000 - Gas fireplace insert (FP-1)

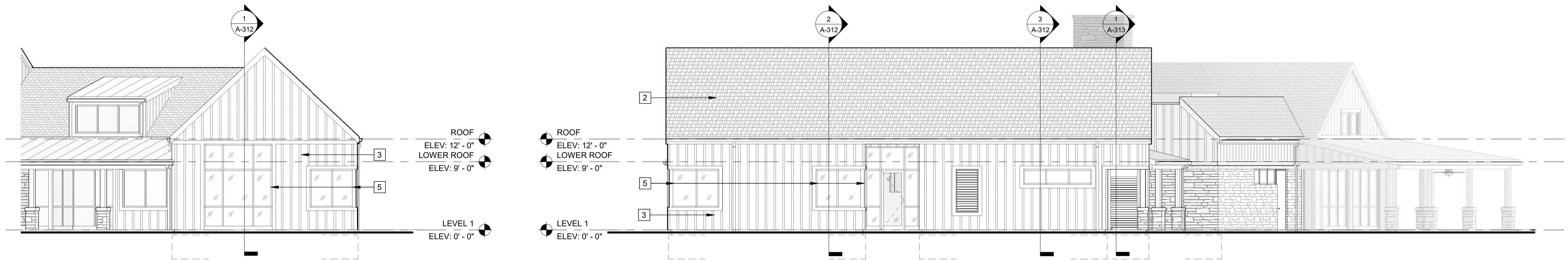
LEGEND - EXTERIOR ELEVATIONS



GLAZING



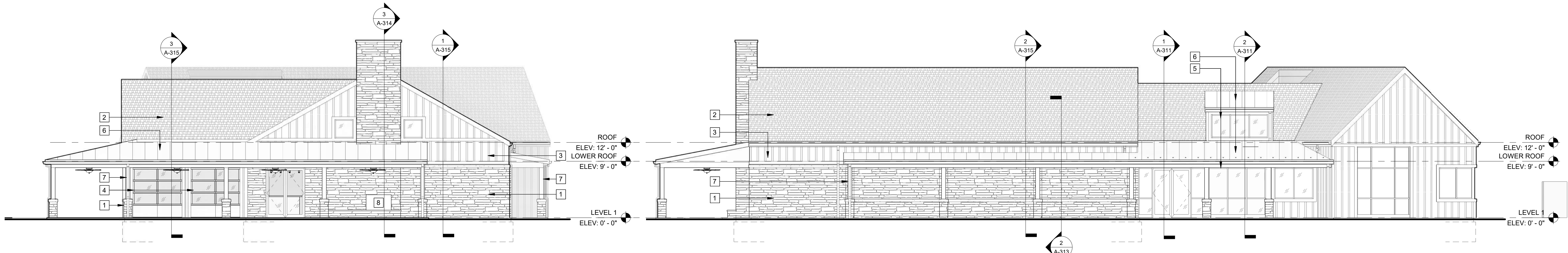
12 NORTH ELEV 3 A-201 Scale: 1/8" = 1'-0"  
11 SOUTH ELEV 3 A-201 Scale: 1/8" = 1'-0"  
10 WEST ELEVATION 3 A-201 Scale: 1/8" = 1'-0"  
9 EAST ELEVATION 4 A-201 Scale: 1/8" = 1'-0"  
8 EAST ELEVATION 3 A-201 Scale: 1/8" = 1'-0"  
7 WEST ELEVATION 2 A-201 Scale: 1/8" = 1'-0"



6 SOUTH ELEVATION 2 A-201 Scale: 1/8" = 1'-0"  
5 EAST ELEVATION A-201 Scale: 1/8" = 1'-0"



13 NORTH ELEVATION 5 A-201 Scale: 1/8" = 1'-0"  
4 NORTH ELEVATION 2 A-201 Scale: 1/8" = 1'-0"  
3 NORTH ELEVATION A-201 Scale: 1/8" = 1'-0"



2 WEST ELEVATION A-201 Scale: 1/8" = 1'-0"  
1 SOUTH ELEVATION A-201 Scale: 1/8" = 1'-0"

23-057  
Ellsworth Meadows Clubhouse  
City of Hudson  
1101 Barlow Road  
Hudson, Ohio 44236

ISSUE  
ARB Submittal  
DATE  
4 dec 2023

EXTERIOR ELEVATIONS













Portable Toilet

Up to 400 Gallons of Water  
Required for operation of this unit.  
No water or power required.  
No power or water needed.





Portable  
Toilet Services  
800.475.0049

NO PARKING  
IN FRONT OF  
PORTABLE TOILETS  
OR OTHER  
STRUCTURES

4X4





































LIMESTONE  
IN GRAND BANKS™

# LIMESTONE

Convey a traditional formality with this hand-dressed, chiseled textured stone.  
Distinctive color blends range from lighter creams to natural ash greys.

HEIGHT: 2.25"-8" | LENGTH: 3.5"-17" | THICKNESS: 1"-2.5" | CORNER RETURNS: 2.25"-4.25" SHORT, 5.75"-16" LONG



GRAND BANKS™



SAN MARINO



YORK



# ACCENTS & ACCESSORIES

Details turn an ordinary project into an extraordinary one. Each accent and accessory is created by hand to meticulously emphasize unique color hues and sculptural characteristics. Finalize your design with the essence of true masonry craftsmanship.



COASTALREEF®  
IN PEARL WHITE

## ASHLAR ACCENTS

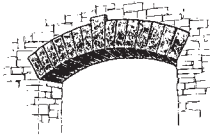
Pair the detail of natural stone with uniform edge details. These accents are impressive in form, with a consistent, sculpted shape that simplifies the installation process.



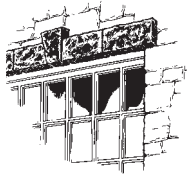
TAUPE      EARTH      SMOKE      BUCKSKIN



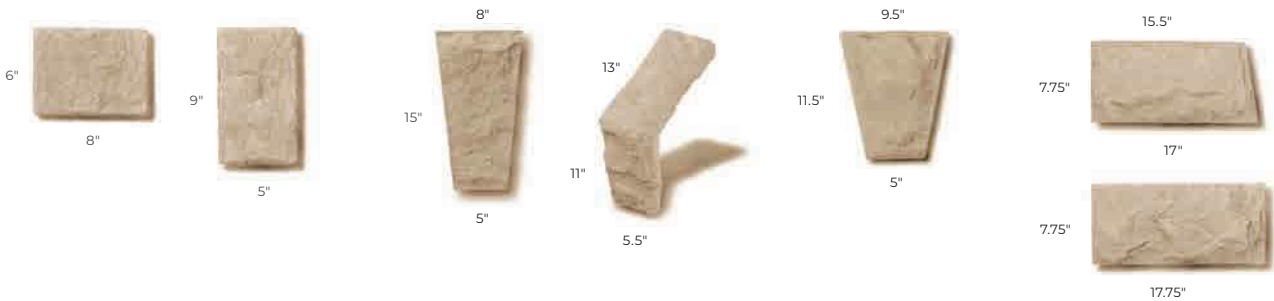
TRIM STONES  
Approx. 2" thick



KEystone & ARCHSTONE  
Approx. 1.5" to 2" thick



CUT HEADS  
Approx. 1.5" to 2.5" thick



## CRAFTSHIELD™

Preserve the art of masonry and safeguard the surface of your stone veneer. Designed for both exterior and interior applications, CraftShield dries invisible to the eye, is low in odor, and offers a 10-Year Protection.



CHISELED EDGE™ ACCENTS

Finalize your project with a unique accent piece. These accents feature a hand-dressed appearance with a uniform yet rustic detail.



TAUPE      EARTH      SMOKE      BUCKSKIN



**WAINSCOT SILL 90°**  
8"L (both exterior sides) × 3"D × 2"H (face) to 2.5"H (back)

**WAINSCOT SILL 135°**  
7.5"L (both exterior sides) × 3"D × 2"H (face) to 2.5"H (back)

**WAINSCOT SILL STRAIGHT**  
19.75"L × 3"D × 2"H (face) to 2.5"H (back)



**PEAKED WALL CAPS**  
Available in 2 sizes:  
20" × 16"  
(2"H sides with a 3.5"H peak)  
20" × 12"  
(2.375"H sides with a 3.5"H peak)

**TEXTURED COLUMN CAPS**  
Cap peak approx. 5.5"H.  
Available in 3 sizes with or without hole:  
26" × 26" (2.5"H sides)  
22" × 22" (2.5"H sides)  
18" × 18" (2.5"H sides)

**COLUMN CAPS**  
Column Caps approx. 2.5" thick.  
Available in 2 sizes:  
30" × 24"  
24" × 24"



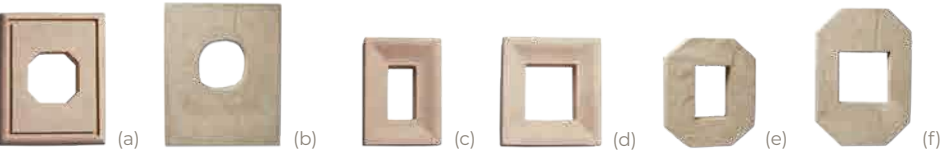
**HEARTHSTONE**  
20"L × 20"D × 2"H



**WALL CAPS**  
Wall Caps approx. 2.25" thick.  
Available in 2 sizes:  
37" × 12"  
37" × 9"  
37" × 6"

UTILITY ACCENTS

Create a seamless and decorative transition from a utility to your stone or brick veneer. Available in Taupe, Earth, Smoke & Buckskin (see colors above).



**LIGHTBOXES**  
Approx. 1.75" thick.  
(a) 8" × 10"  
(b) 9.5" × 11"

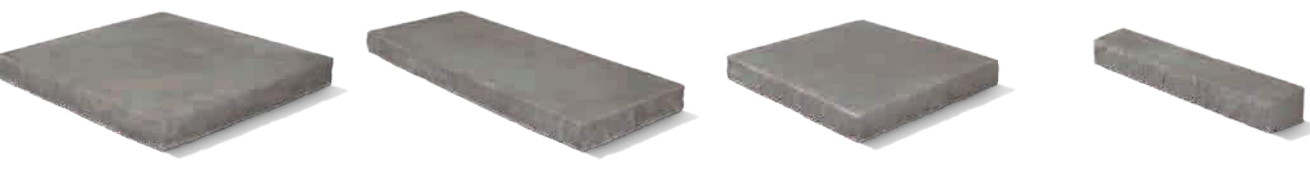
**ELECTRICAL BOXES**  
(c) 6" × 8" (approx. 2" thick)  
(d) 8" × 8" (approx. 2" thick)  
(e) 8" × 8" (approx. 1.75" thick)  
(f) 8" × 12" (approx. 1.75" thick)

SPLIT EDGE™ ACCENTS

Stay current with accents designed to complement our line of modern stones and contemporary color palettes.



BLUE STEEL      COASTAL SAND      GREY SKY      WHITE CLOUD



**COLUMN CAPS**  
Available in 4 sizes:  
26"L × 26"D × 2"H  
24"L × 24"D × 2"H  
22"L × 22"D × 2"H  
18"L × 18"D × 2"H

**WALL CAPS**  
Available in 2 sizes:  
12"L × 30"D × 2"H  
9"L × 30"D × 2"H

**HEARTHSTONE**  
20"L × 20"D × 2"H

**WAINSCOT SILL**  
20"L × 3"D × 2"H (face) to 2.5"H (back)

SNAPPED EDGE™ ACCENTS

Highlight craftsmanship with irregular edge details and undulations that appear hand-chiseled. Subtle color highlights create a natural appearance.



WALNUT      PEWTER      SAND



**COLUMN CAPS**  
Available in 3 sizes:  
24"L × 24"D × 1.5"H  
22"L × 22"D × 1.5"H  
18"L × 18"D × 1.5"H

**WALL CAPS**  
Available in 2 sizes:  
24"L × 14"D × 1.5"H  
18"L × 14"D × 1.5"H

**HEARTHSTONE**  
20"L × 20"D × 1.5"H

**WAINSCOT SILL**  
19.75"L × 3"D × 1.5"H (face) to 2.5"H (back)



CHISELED EDGE™ ACCENTS

Finalize your project with a unique accent piece. These accents feature a hand-dressed appearance with a uniform yet rustic detail.



TAUPE      EARTH      SMOKE      BUCKSKIN



**WAINSCOT SILL 90°**  
8"L (both exterior sides) × 3"D × 2"H (face) to 2.5"H (back)

**WAINSCOT SILL 135°**  
7.5"L (both exterior sides) × 3"D × 2"H (face) to 2.5"H (back)

**WAINSCOT SILL STRAIGHT**  
19.75"L × 3"D × 2"H (face) to 2.5"H (back)



**PEAKED WALL CAPS**  
Available in 2 sizes:  
20" × 16"  
(2"H sides with a 3.5"H peak)  
20" × 12"  
(2.375"H sides with a 3.5"H peak)

**TEXTURED COLUMN CAPS**  
Cap peak approx. 5.5"H.  
Available in 3 sizes with or without hole:  
26" × 26" (2.5"H sides)  
22" × 22" (2.5"H sides)  
18" × 18" (2.5"H sides)

**COLUMN CAPS**  
Column Caps approx. 2.5" thick.  
Available in 2 sizes:  
30" × 24"  
24" × 24"



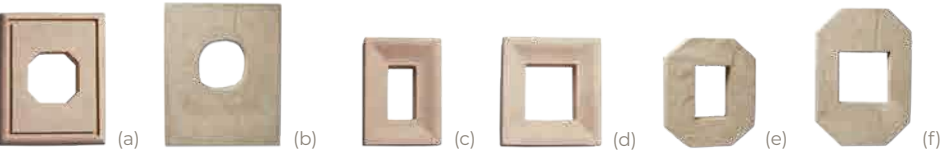
**HEARTHSTONE**  
20"L × 20"D × 2"H



**WALL CAPS**  
Wall Caps approx. 2.25" thick.  
Available in 3 sizes:  
37" × 12"  
37" × 9"  
37" × 6"

UTILITY ACCENTS

Create a seamless and decorative transition from a utility to your stone or brick veneer. Available in Taupe, Earth, Smoke & Buckskin (see colors above).



**LIGHTBOXES**  
Approx. 1.75" thick.  
(a) 8" × 10"  
(b) 9.5" × 11"

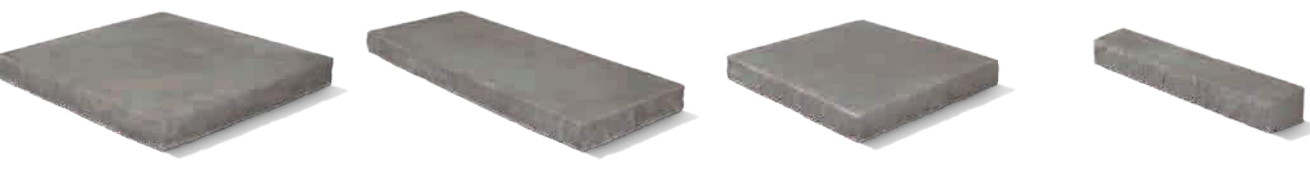
**ELECTRICAL BOXES**  
(c) 6" × 8" (approx. 2" thick)  
(d) 8" × 8" (approx. 2" thick)  
(e) 8" × 8" (approx. 1.75" thick)  
(f) 8" × 12" (approx. 1.75" thick)

SPLIT EDGE™ ACCENTS

Stay current with accents designed to complement our line of modern stones and contemporary color palettes.



BLUE STEEL      COASTAL SAND      GREY SKY      WHITE CLOUD



**COLUMN CAPS**  
Available in 4 sizes:  
26"L × 26"D × 2"H  
24"L × 24"D × 2"H  
22"L × 22"D × 2"H  
18"L × 18"D × 2"H

**WALL CAPS**  
Available in 2 sizes:  
12"L × 30"D × 2"H  
9"L × 30"D × 2"H

**HEARTHSTONE**  
20"L × 20"D × 2"H

**WAINSCOT SILL**  
20"L × 3"D × 2"H (face) to 2.5"H (back)

SNAPPED EDGE™ ACCENTS

Highlight craftsmanship with irregular edge details and undulations that appear hand-chiseled. Subtle color highlights create a natural appearance.



WALNUT      PEWTER      SAND



**COLUMN CAPS**  
Available in 3 sizes:  
24"L × 24"D × 1.5"H  
22"L × 22"D × 1.5"H  
18"L × 18"D × 1.5"H

**WALL CAPS**  
Available in 2 sizes:  
24"L × 14"D × 1.5"H  
18"L × 14"D × 1.5"H

**HEARTHSTONE**  
20"L × 20"D × 1.5"H

**WAINSCOT SILL**  
19.75"L × 3"D × 1.5"H (face) to 2.5"H (back)





# Timberline<sup>®</sup>HDZ<sup>®</sup>

High Definition<sup>®</sup> Lifetime<sup>†</sup> Shingles



As featured on *This Old House*, the Timberline HDZ<sup>®</sup> Shingles installed here are Oyster Gray.

Millions of families have found shelter and peace of mind under a Timberline<sup>®</sup> roof.

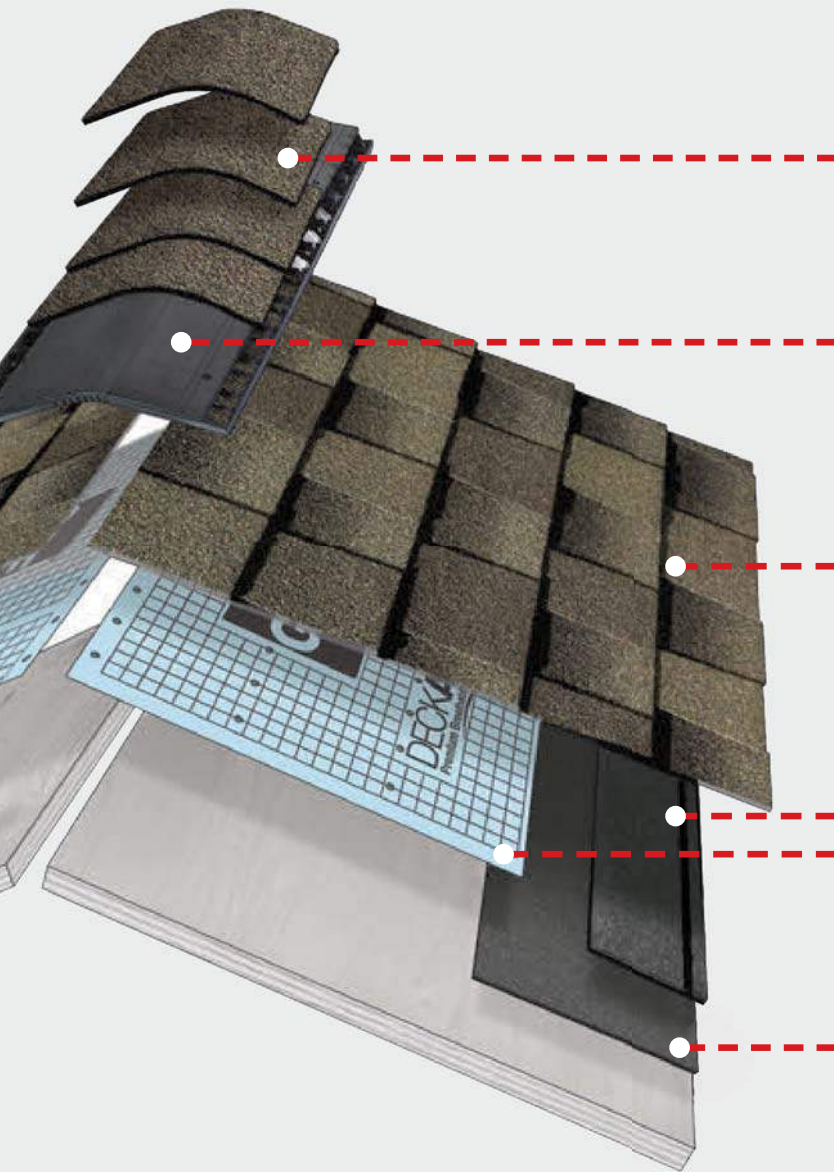
And now, a good thing just got even better again.

We protect what matters most<sup>™</sup>





## The GAF Lifetime<sup>†</sup> Roofing System



### Ridge Cap Shingles

The finishing touch that helps defend against leaks at the hips and ridges



### Cobra<sup>®</sup> Attic Ventilation

Helps reduce attic moisture and heat



### Lifetime<sup>†</sup> Shingles

Beautify and protect for years to come



### Starter Strip Shingles

Helps guard against shingle blow-offs



### Roof Deck Protection

Helps shield the roof deck from moisture infiltration



### Leak Barrier

Helps prevent leaks caused by wind-driven rain and ice dams

Install any GAF Lifetime<sup>†</sup> Shingle and at least 3 qualifying GAF Accessories and get a Lifetime<sup>†</sup> limited warranty on your qualifying GAF products plus

non-prorated coverage for the first 10 years. For even stronger coverage, ask your GAF factory-certified contractor<sup>1</sup> about enhanced GAF warranties.



<sup>†</sup> Lifetime refers to the length of warranty coverage provided and means as long as the original individual owner(s) of a single-family detached residence [or eligible second owner(s)] owns the property where the qualifying GAF products are installed. For other owners/structures, Lifetime coverage is not applicable. Lifetime coverage on shingles requires the use of GAF Lifetime Shingles only. See the *GAF Shingle & Accessory Limited Warranty* for complete coverage and restrictions. Visit [gaf.com/LRS](http://gaf.com/LRS) for qualifying GAF products. Lifetime coverage on shingles and accessories requires the use of any GAF Lifetime Shingle and at least 3 qualifying GAF Accessories. See the *GAF Roofing System Limited Warranty* for complete coverage and restrictions. For installations not eligible for the *GAF Roofing System Limited Warranty*, see the *GAF Shingle & Accessory Limited Warranty*. Visit [gaf.com/LRS](http://gaf.com/LRS) for qualifying GAF products.

<sup>1</sup> Contractors enrolled in GAF certification programs are not employees or agents of GAF, and GAF does not control or otherwise supervise these independent businesses. Contractors may receive benefits, such as loyalty rewards points and discounts on marketing tools from GAF for participating in the program and offering GAF enhanced warranties, which require the use of a minimum amount of GAF products.





## Weathered Wood

The perfect neutral color, Weathered Wood complements a broad range of hues and works well with sage, cream, ivory, and beige.

Note: It is difficult to reproduce the color clarity and actual color blends of these products. Before selecting your color, please ask to see several full-size shingles.





## Charcoal

Charcoal is the most neutral of shades, and works wonderfully with blues, grays, whites, yellow, gold, sage, and green.

Note: It is difficult to reproduce the color clarity and actual color blends of these products. Before selecting your color, please ask to see several full-size shingles.





## Pewter Gray

Pewter Gray can add dramatic counterpoint to contemporary exterior color palettes, as well as to stucco or brick facades.

Note: It is difficult to reproduce the color clarity and actual color blends of these products. Before selecting your color, please ask to see several full-size shingles.





## Barkwood

The neutral brown Barkwood emulates wood and coordinates well with warm colors like beige, taupe, cream, gold, and yellow.

Note: It is difficult to reproduce the color clarity and actual color blends of these products. Before selecting your color, please ask to see several full-size shingles.





## Shakewood

An appealing blend of browns, tans, and gold, warm radiant Shakewood pairs equally well with neutral beige and clay tones, as well as deeper jewel tones.

Note: It is difficult to reproduce the color clarity and actual color blends of these products. Before selecting your color, please ask to see several full-size shingles.





## Hickory

An inviting brown shade with a red undertone, Hickory is an excellent companion to brick and stone homes and works well with browns, beiges, yellows, and golds.

Note: It is difficult to reproduce the color clarity and actual color blends of these products. Before selecting your color, please ask to see several full-size shingles.





## Slate

A cool gray with a beautiful green undertone, Slate coordinates well with both grays and greens, as well as with white, cream, and ivory exteriors.

Note: It is difficult to reproduce the color clarity and actual color blends of these products. Before selecting your color, please ask to see several full-size shingles.





## Mission Brown

Emulating the rustic shades and tones of the earth, Mission Brown provides a simple natural backdrop that allows other colors to appear richer and brighter.

Note: It is difficult to reproduce the color clarity and actual color blends of these products. Before selecting your color, please ask to see several full-size shingles.





## Hunter Green

A rich color with dramatic undertones, Hunter Green makes people take notice.

Note: It is difficult to reproduce the color clarity and actual color blends of these products. Before selecting your color, please ask to see several full-size shingles.





## Nantucket Morning

*Harvest Blend Color*

**Features cool gray tones that partner perfectly with blues and grays.**

Note: It is difficult to reproduce the color clarity and actual color blends of these products. Before selecting your color, please ask to see several full-size shingles.





Photo credit: Jared Kuzia for This Old House,  
or @jaredkuziaphotography and @thisoldhouse

## Appalachian Sky

*Harvest Blend Color*

**Appalachian Sky** offers a subtle variety of dark grays, black, and browns, bringing appealing definition to homes with brick facades.

Note: It is difficult to reproduce the color clarity and actual color blends of these products. Before selecting your color, please ask to see several full-size shingles.





## Golden Harvest

*Harvest Blend Color*

A striking color that provides warmth to almost any siding or brick, this blend also offers exceptional contrast, for a light, yet colorful roof.

Note: It is difficult to reproduce the color clarity and actual color blends of these products. Before selecting your color, please ask to see several full-size shingles.





## Cedar Falls

*Harvest Blend Color*

The clay-colored background and subtle gray highlights create a refined and polished look that offers a wonderful complement to stone.

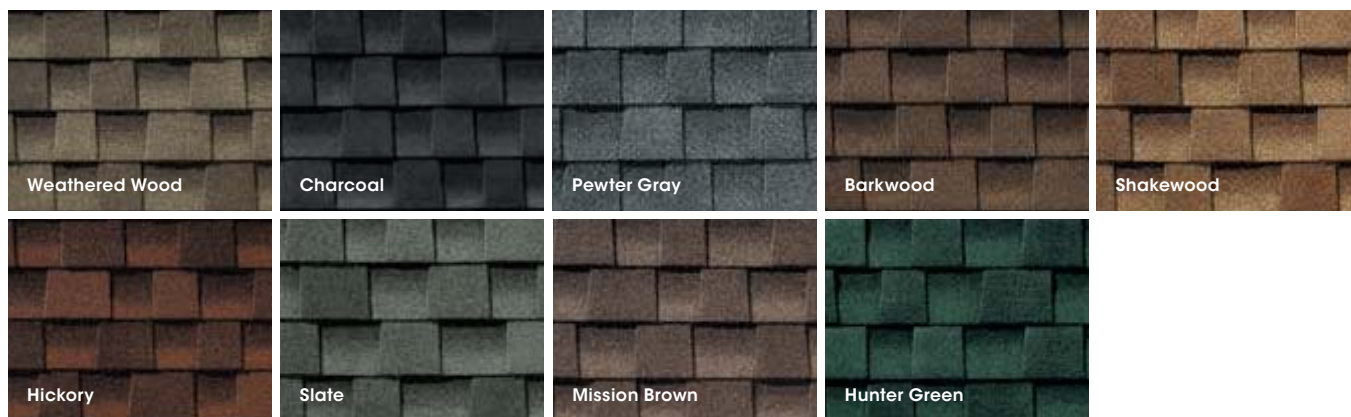
Note: It is difficult to reproduce the color clarity and actual color blends of these products. Before selecting your color, please ask to see several full-size shingles.



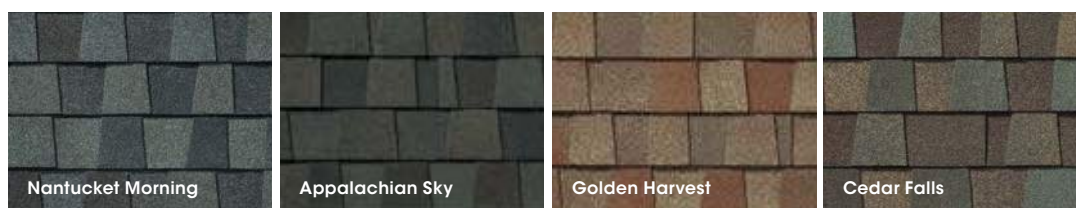
# Color Availability



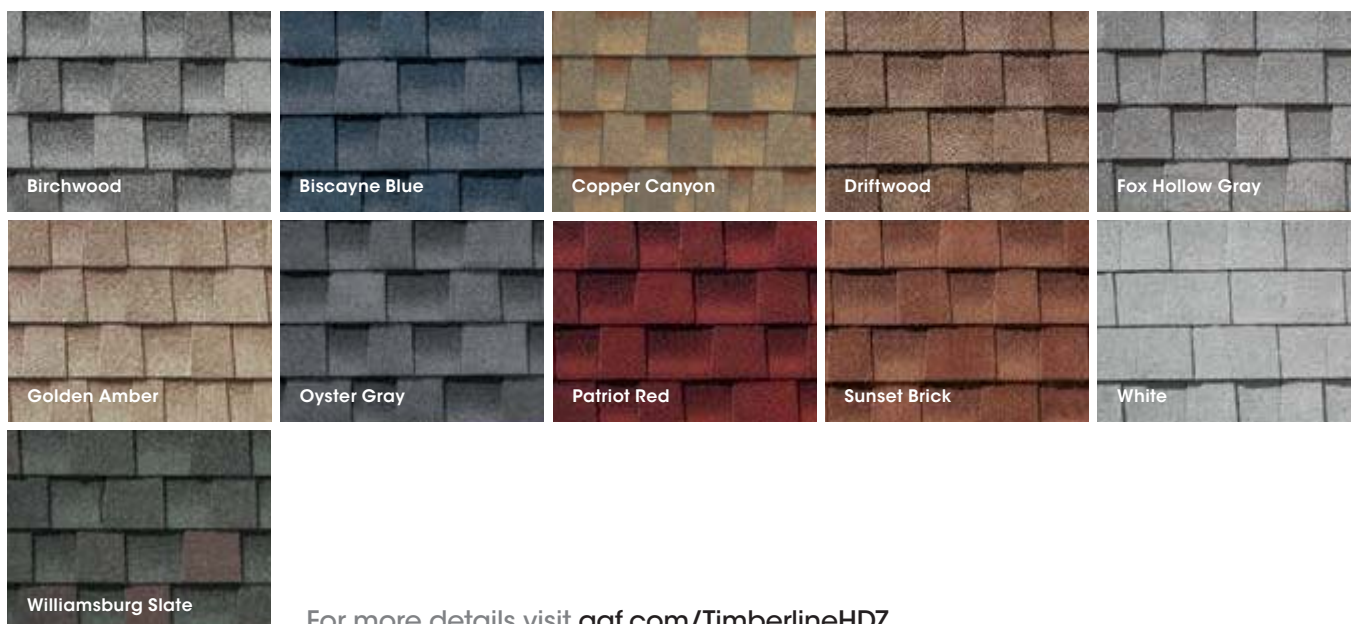
## Nationally Available Colors



## Harvest Blend Colors



## Regionally Available Colors (See next page for details.)



For more details visit [gaf.com/TimberlineHDZ](http://gaf.com/TimberlineHDZ)

Note: It is difficult to reproduce the color clarity and actual color blends of these products. Before selecting your color, please ask to see several full-size shingles.



# Timberline HDZ® Availability

Color Availability Chart	1	2	3	4	5	6	7
--------------------------	---	---	---	---	---	---	---

## Most Popular Colors:

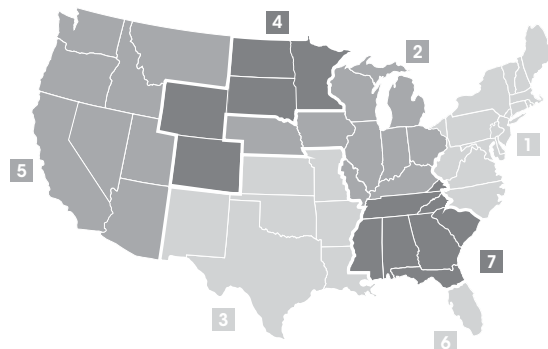
Barkwood		•	•	•	•	•	•	•
Charcoal		•	•	•	•	•	•	•
Hickory		•	•	•	•	•	•	•
Hunter Green		•	•	•	•	•	•	•
Mission Brown		•	•	•	•	•	•	•
Pewter Gray		•	•	•	•	•	•	•
Shakewood		•	•	•	•	•	•	•
Slate		•	•	•	•	•	•	•
Weathered Wood		•	•	•	•	•	•	•

## Harvest Blend Colors:

Nantucket Morning		•	•	•	•	•	•	•
Appalachian Sky		•	•	•	•	•	•	•
Golden Harvest		•	•	•	•	•	•	•
Cedar Falls		•	•	•	•	•	•	•

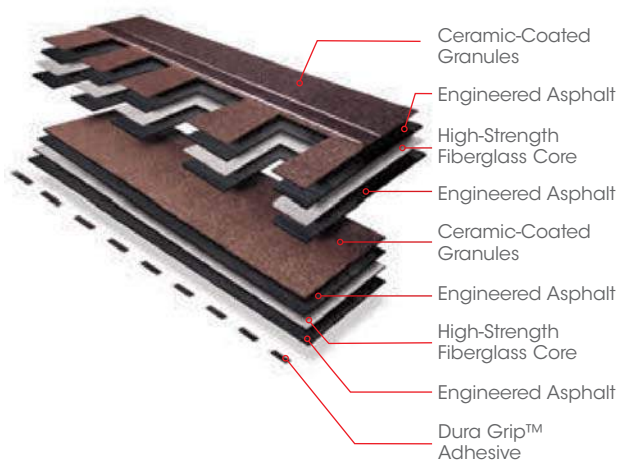
## Regional Colors:

Birchwood			•		•	•	•	•
Biscayne Blue		•						
Copper Canyon <sup>1</sup>					•			
Driftwood							•	•
Fox Hollow Gray		•	•					
Golden Amber <sup>1</sup>					•			
Oyster Gray		•					•	•
Patriot Red		•						
Sunset Brick							•	
White <sup>1</sup>							•	
Williamsburg Slate		•	•					



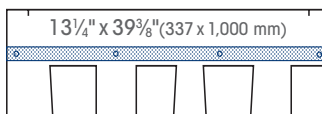
<sup>1</sup> Rated by the Cool Roof Rating Council (CRRC); can be used to comply with 2019 Title 24 Part 6 Cool Roof Requirements of the California Code of Regulations.

## The protective layers of a Timberline HDZ® Shingle



### Product/System Specifics

- Fiberglass asphalt construction
- Dimensions (approx.): 13 1/4" x 39 3/8" (337 mm x 1,000 mm)
- Exposure: 5 5/8" (143 mm)
- Bundles/Square: 3
- Pieces/Square: 64
- StainGuard Plus™ Algae Protection Limited Warranty<sup>1</sup>
- Hip/Ridge: TimberTex®<sup>3</sup>; TimberCrest®; Seal-A-Ridge®<sup>3</sup>; Z®Ridge; Ridglass®
- Starter: Pro-Start®; QuickStart®; WeatherBlocker™



### Applicable Standards & Protocols:

- UL Listed to ANSI/UL 790 Class A
- State of Florida approved
- Classified by UL in accordance with ICC-ES AC438
- Meets ASTM D7158, Class H
- Meets ASTM D3161, Class F
- Meets ASTM D3018, Type 1
- Meets ASTM D3462<sup>2</sup>
- Miami-Dade County Product Control approved
- ICC-ES Evaluation Reports ESR-1475 and ESR-3267
- Meets Texas Department of Insurance Requirements
- Rated by the CRRC; Can be used to comply with 2019 Title 24 Part 6 Cool Roof Requirements of the California Code of Regulations.

<sup>1</sup> 25-year StainGuard Plus™ Algae Protection Limited Warranty against blue-green algae discoloration is available only on products sold in packages bearing the StainGuard Plus™ logo. See GAF Shingle & Accessory Limited Warranty for complete coverage and restrictions and qualifying products.

<sup>2</sup> Periodically tested by independent and internal labs to ensure compliance with ASTM D3462 at time of manufacture.

<sup>3</sup> Harvest Blend colors are only available on TimberTex® and Seal-A-Ridge®.



# TimberTex® and TimberCrest® Premium Ridge Cap Shingles



Hip & Ridge Cap Shingles accentuate the natural beauty of your architectural shingle roof. They're the perfect finishing touch that helps defend against leaks at the hips and ridges. [gaf.com/ridgecaps](http://gaf.com/ridgecaps)

TimberTex® Premium Ridge Cap Shingles



TimberCrest® Premium SBS-Modified Ridge Cap Shingles



TimberTex® and TimberCrest® Premium Ridge Cap Shingles are designed to complement the color of your Timberline® Shingles. To ensure the closest color consistency for your roof, ask your contractor to use genuine TimberTex® or TimberCrest® Premium Ridge Cap Shingles.<sup>1</sup>

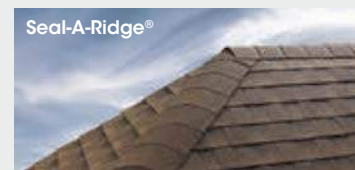
- Accentuate the beauty of your newly installed shingle roof
- Protect against leaks and blow-offs at the hip and ridge areas of your roof
- Complement the color of your GAF Shingles with hip and ridge cap shingles manufactured by GAF
- 25-year StainGuard Plus™ Algae Protection Limited Warranty<sup>2</sup> against blue-green algae discoloration uses GAF Time-Release Algae-Fighting Technology to help protect your ridge cap shingles from unsightly stains.

## Also available<sup>1</sup>

Z®Ridge



Seal-A-Ridge®



<sup>1</sup> These products are not available in all areas. See [gaf.com/ridgecapavailability](http://gaf.com/ridgecapavailability) for details.

<sup>2</sup> 25-year StainGuard Plus™ Algae Protection Limited Warranty against blue-green algae discoloration is available only on products sold in packages bearing the StainGuard Plus™ logo. See *GAF Shingle & Accessory Limited Warranty* for complete coverage and restrictions and qualifying products.



# America's #1-selling shingle just got better — *again.*

**GAF** Timberline HDZ®  
High Definition® Lifetime Shingles



It seems like yesterday. In 2020, GAF introduced Timberline HDZ® Shingles with LayerLock™ Technology, which are eligible for the WindProven Limited Wind Warranty with no maximum wind speed limitation when installed with the required combination of GAF accessories.<sup>1</sup>

Now we're making our most popular shingle even better, with the addition of a 25-year StainGuard Plus™ Algae Protection Limited Warranty<sup>2</sup> against blue-green algae discoloration. Add GAF Hip and Ridge Cap Shingles and starter strips with the StainGuard Plus™ Algae Protection Limited Warranty<sup>2</sup> for protection from eave to ridge.

Offer your customers Timberline HDZ® — the shingle that just keeps getting better. Only from GAF.

Find out more at [gaf.com/StainGuardPlus](https://gaf.com/StainGuardPlus)

A **stanðard** INDUSTRIES COMPANY

We protect what matters most™

**GAF**

<sup>1</sup> 15-year WindProven™ limited wind warranty on Timberline HDZ Shingles requires the use of GAF starter strips, roof deck protection, ridge cap shingles, and leak barrier or attic ventilation. See *GAF Roofing System Limited Warranty* for complete coverage and restrictions. Visit [gaf.com/LRS](https://gaf.com/LRS) for qualifying GAF products. For installations not eligible for the WindProven limited wind warranty, see *GAF Shingle & Accessory Limited Warranty* for complete coverage and restrictions.

<sup>2</sup> 25-year StainGuard Plus™ Algae Protection Limited Warranty against blue-green algae discoloration is available only on products sold in packages bearing the StainGuard Plus™ logo. See *GAF Shingle & Accessory Limited Warranty* for complete coverage restrictions and qualifying products.

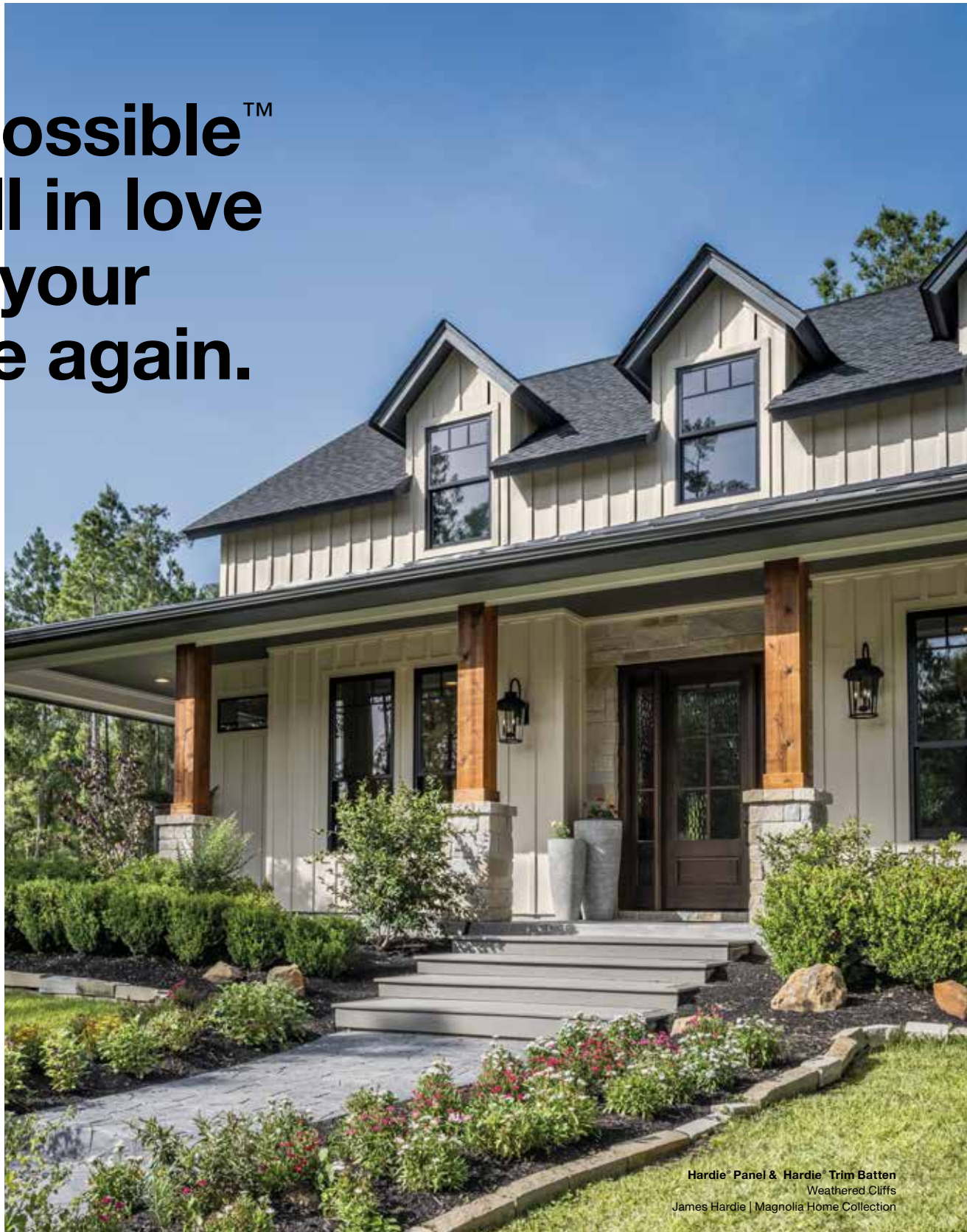
398625-0122

© 2021 GAF 12/21 • #027 • RESTZ145



**It's Possible<sup>™</sup>  
to fall in love  
with your  
home again.**

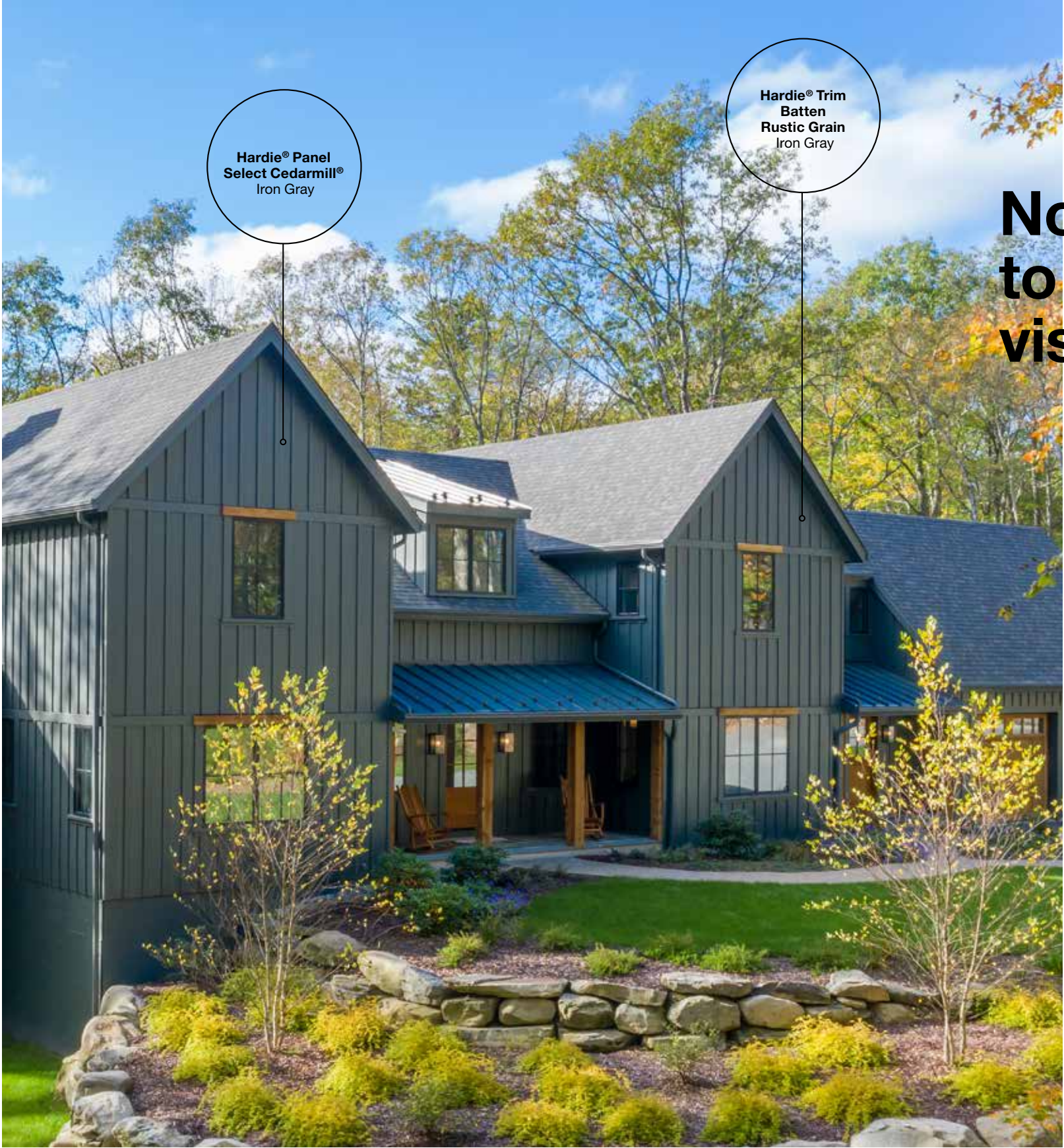
Michigan, Chicago & Ohio Product Catalog



Hardie® Panel & Hardie® Trim Batten  
Weathered Cliffs  
James Hardie | Magnolia Home Collection



4	<b>Endless Design Possibilities</b>
6	Inspiration
8	Statement Collection® Products
10	Dream Collection® Products
12	James Hardie   Magnolia Home Collection
18	Hardie® Plank
20	Hardie® Shingle
22	Hardie® Panel
24	Hardie® Trim
26	Hardie® Soffit
28	Hardie® Artisan Siding
30	Complete Exterior by James Hardie™
32	<b>Trusted Protection</b>
34	Tougher than the Elements
36	Hardie™ Zone System
38	Unique Formulation
40	Sustainability
42	<b>Long-Lasting Beauty</b>
44	Finishing Technology
46	The James Hardie Difference
48	Warranty
50	Hardie™ Weather Barrier



Now is the time  
to bring your  
vision to life.

With endless design possibilities that embody your aesthetic, no matter how unique, Hardie® fiber cement exterior solutions give your home a beautiful design without having to sacrifice durability and protection. Trusted by homeowners on over 10 million homes\* from coast to coast, and rated the #1 brand of siding in North America, it's clear that the vast product offerings from James Hardie can make the home you've always wanted possible. **Revel in the beauty of your home's gorgeous exterior with the unprecedented peace of mind that only Hardie® products can provide.** With James Hardie, your dream home is possible.

<b>ENDLESS DESIGN POSSIBILITIES</b>	With a wide variety of colors, products and textures, you can create the personalized home exterior design that reflects your unique style – and that you'll love for years to come.
<b>TRUSTED PROTECTION</b>	Hardie® fiber cement products resist fire, moisture and extreme weather, and hold no appeal for pests. All to help protect your home, and everything you cherish.
<b>LONG-LASTING BEAUTY</b>	Enjoy the peace of mind that comes with a low-maintenance exterior, backed by a 30-year non-prorated substrate warranty.**





**Endless  
design  
possibilities.**

**Endless ways  
to express  
yourself.**





# Statement Collection® Products

It's your turn to let your home stand out with our Statement Collection® products. Curated by our design experts, this collection of Hardie® siding and trim products with ColorPlus® Technology finishes are unique to your home's region. This gorgeous selection is locally stocked in your area, making it easier than ever to find the exterior style of your dreams.

## COLORPLUS® TECHNOLOGY

ColorPlus® Technology finishes combine distinct beauty and high performance in a way that no other finish does. They're the easiest way to choose a gorgeous pre-finished color for your house, and feel confident in its staying power.



Scan code to request a sample.

### Hardie® Plank, Hardie® Panel, Hardie® Shingle and Hardie® Trim Batten Color Offering

Arctic White

Cobble Stone

Navajo Beige

Khaki Brown

Monterey Taupe

Timber Bark

Rich Espresso

Mountain Sage

Gray Slate

Boothbay Blue

Light Mist

Pearl Gray

Aged Pewter

Night Gray

Evening Blue

Deep Ocean

Iron Gray

Countrylane Red

### Hardie® Trim Color Offering

Arctic White

Cobble Stone

Timber Bark

Iron Gray

Midnight Black

### Hardie® Soffit Color Offering

Arctic White

### Hardie® Plank

Thickness 5/16 in  
Length 12 ft planks

Select Cedarmill®

Width 7.25 in 8.25 in

Exposure 6 in 7 in

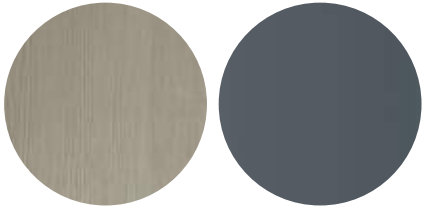


### Hardie® Panel

Thickness 5/16 in

Select Cedarmill® & Smooth

Size 4 ft x 10 ft



### Hardie® Shingle

Thickness 1/4 in  
Length 48 in

Straight Edge Panel

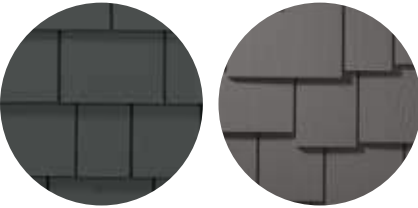
Staggered Edge Panel

Height 15.25 in

Height 15.25 in

Exposure 7 in

Exposure 6 in



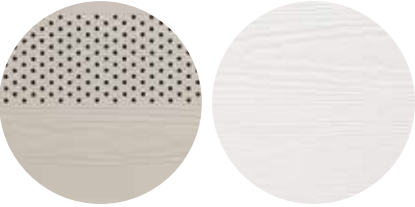
### Hardie® Soffit

Thickness 1/4 in

Vented and Non-Vented Select Cedarmill®

Width 12 in

Length 12 ft



### Hardie® Trim

Length 12 ft

4/4 Smooth

Thickness .75 in

Width 3.5 in\* 5.5 in 7.25 in 9.25 in\* 11.25 in\*

5/4 Smooth

Thickness 1 in

Width 3.5 in 5.5 in 7.25 in 9.25 in\* 11.25 in

\*This size is only available in Arctic White



### Hardie® Trim

Length 12 ft

4/4 Roughsawn

Thickness .75 in

Width 3.5 in\* 5.5 in\* 7.25 in 9.25 in\* 11.25 in\*

5/4 Roughsawn

Thickness 1 in

Width 3.5 in 5.5 in 7.25 in 9.25 in\* 11.25 in\*

\*This size is only available in Arctic White

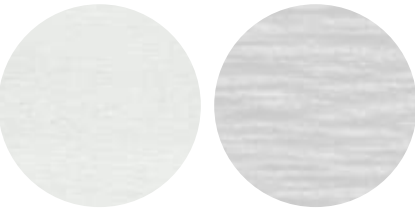


### Batten Boards

Smooth & Rustic Grain

Thickness .75 in

Width 2.5 in







MAGNOLIA HOME



Hardie® Shingle Straight Edge Panel  
It's About Thyme

“CHIP AND I WERE REALLY EXCITED TO COLLABORATE WITH JAMES HARDIE. OUR AIM IS ALWAYS TO NOT ONLY GIVE CLIENTS A BEAUTIFUL HOME, BUT ONE THAT WILL STAND THE TEST OF TIME.

— Joanna & Chip Gaines





*introducing the*  
**MAGNOLIA HOME | JAMES HARDIE  
COLLECTION**

We’ve partnered with Magnolia Home to create an inspired collection of exteriors in colors, styles and textures curated by Joanna Gaines to transform your home into your favorite place to be. This collection was created to help simplify the process of re-siding your home, so you can design with confidence. You’ll have added peace of mind knowing your project is backed by the trusted protection and long-lasting beauty of the recognized leader in exterior siding, James Hardie.



**EVERY HOME  
TELLS A STORY**

When it comes to design, Joanna’s favorite style is anything that’s beautiful and timeless and tells a unique story. That’s what made the idea of partnering with James Hardie so easy. With the beautiful, nature-inspired colors and styles of Hardie® siding and trim curated for this collection, Jo created an inspiring palette of possibilities. She’s made it easy for homeowners to choose what they want for their exterior transformation.

The Magnolia Home | James Hardie Collection can help you create an exterior you love.

---

“WHEN PEOPLE TELL THEIR OWN STORY RATHER THAN FEELING PRESSURE TO FIT WITHIN A SPECIFIC STYLE, THERE’S MORE FREEDOM - AND THEIR SPACE BEGINS TO FEEL LIKE HOME.”

— Joanna Gaines

---





STYLES

*find your perfect mix of exterior products*



HARDIE® PANEL  
& HARDIE® TRIM BATTEN



HARDIE® SHINGLE



HARDIE® PLANK



HARDIE® TRIM



HARDIE® SOFFIT

For more detailed product size and availability information,  
visit [jameshardie.com/magnolia](https://jameshardie.com/magnolia).

TEXTURES

*choose the texture you prefer*



HARDIE® TRIM SMOOTH



HARDIE® SIDING SMOOTH\*



HARDIE® TRIM RUSTIC GRAIN



HARDIE® SIDING SELECT CEDARMILL®\*

\* Textures available for siding and soffit.  
Hardie® Shingle only offered in Select Cedarmill®.

DESIGN *the*  
HOME YOU'VE ALWAYS IMAGINED

Visualize Hardie® products on a 3D model of your home with  
HOVER® Design Studio, brought to you by James Hardie.

Every home tells a story. What will yours be? Start your free design.



VISUALIZE THE COLLECTION ON YOUR HOME

COLORS

*select the hue that's right for you*



BIRCH TREE



WEATHERED CLIFFS



RUSTIC ROAD



RUGGED PATH



IT'S ABOUT THYME



STONE BEACH



STONE PAVER



WARM CLAY



DRIED EUCALYPTUS



CHISELED GREEN



WANDERING GREEN



MUDFLATS



SLATE STEPS



PEPPERY ASH



LAST EMBERS



MIDNIGHT SOOT

All products in this collection come prefinished with ColorPlus® Technology finishes by James Hardie.



# A classic look that stands the test of time.

## Hardie® Plank

From Victorians to Colonials, Hardie® Plank is the perfect siding for your style, and has the durability and long-lasting beauty that can transform your home exterior. With endless gorgeous color and plank pairings available, you'll discover a Hardie® Plank style that transforms your home's aesthetic.



## Hardie® Plank



Select Cedarmill®



Smooth



Beaded Select Cedarmill®

	Thickness 5/16 in		Length 12 ft planks		
Width	5.25 in	6.25 in	7.25 in	8.25 in	9.25 in*
Exposure	4 in	5 in	6 in	7 in	8 in
Prime Pcs/Pallet	360	308	252	230	190
ColorPlus® Pcs/Pallet	324	280	252	210	—
Pcs/Sq.	25.0	20.0	16.7	14.3	12.5

### Select Cedarmill®

Width	5.25 in	6.25 in	7.25 in	8.25 in	9.25 in*
Statement Collection®			•	•	
Dream Collection®	•	•	•	•	
Prime	•	•	•	•	•

### Smooth

Width	5.25 in	6.25 in	7.25 in	8.25 in	9.25 in*
Statement Collection®					
Dream Collection®	•	•	•	•	
Prime	•	•	•	•	•

### Beaded Select Cedarmill

Width	8.25 in
Exposure	7 in
ColorPlus® Pcs/Pallet	210
Pcs/Sq.	14.3
Statement Collection®	
Dream Collection®	•
Prime	

\*9.25 in widths do not feature the drip edge



# Designed for versatility and beautiful performance.

## Hardie® Panel

Hardie® Panel delivers style and substance. When combined with Hardie® Trim Batten, it achieves the rustic board-and-batten look that defines your charming cottage or modern farmhouse. Its crisp, clean lines and ability to pair beautifully with other siding products make Hardie® Panel a smart choice for the home of your dreams.



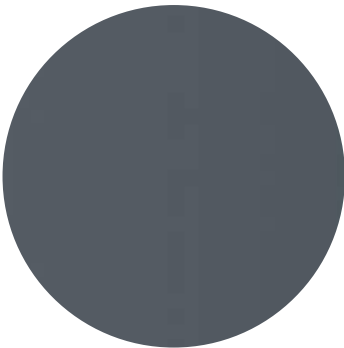
Hardie® Panel  
Select Cedarmill®  
Evening Blue

Hardie® Trim  
Batten  
Rustic Grain  
Evening Blue

## Hardie® Panel



Select Cedarmill®



Smooth



Stucco



Sierra 8

Thickness 5/16 in			
Size	4 ft x 8 ft	4 ft x 9 ft	4 ft x 10 ft
Prime Pcs/Pallet	50	50	50
ColorPlus® Pcs/Pallet	50	—	50
Pcs/Sq.	3.2	2.8	2.5

### Select Cedarmill®

Size	4 ft x 8 ft	4 ft x 9 ft	4 ft x 10 ft
Statement Collection®			•
Dream Collection®	•		•
Prime	•	•	•

### Smooth

Size	4 ft x 8 ft	4 ft x 9 ft	4 ft x 10 ft
Statement Collection®			•
Dream Collection®	•		•
Prime	•	•	•

### Stucco

Size	4 ft x 8 ft	4 ft x 9 ft	4 ft x 10 ft
Statement Collection®			
Dream Collection®	•		•
Prime	•	•	•

### Sierra 8

Size	4 ft x 8 ft	4 ft x 9 ft	4 ft x 10 ft
Statement Collection®			
Dream Collection®			
Prime	•	•	•



# A finished look starts with beautiful trim.

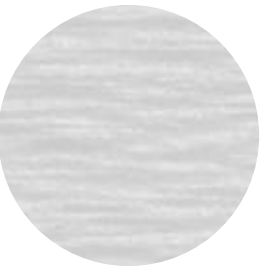
## Hardie® Trim

Form meets function at every intersection with Hardie® Trim boards. With an authentic look, Hardie® Trim boards provide design flexibility for columns, friezes, doors, windows and other accent areas.

With higher performance to withstand damage from the elements compared to wood trim, Hardie® Trim is the perfect option for a long-lasting home. Hardie® Trim is a low-maintenance and durable accent for your exterior — adding an extra component of beauty to your home.



## Hardie® Trim



4/4 Roughsawn		Thickness .75 in		Length 12 ft boards	
Width		3.5 in	5.5 in	7.25 in	9.25 in 11.25 in
Prime Pcs/Pallet		312	208	156	104 104
ColorPlus® Pcs/Pallet		312	208	156	104 104
Statement Collection®	AW	AW	•	AW	AW
Dream Collection®	•	•	•	•	•
Prime	•	•	•	•	•

4/4 Smooth		Thickness .75 in		Length 12 ft boards	
Width		3.5 in	5.5 in	7.25 in	9.25 in 11.25 in
Prime Pcs/Pallet		312	208	156	104 104
ColorPlus® Pcs/Pallet		312	208	156	104 104
Statement Collection®	AW	•	•	AW	AW
Dream Collection®	•	•	•	•	•
Prime	•	•	•	•	•

5/4 Roughsawn		Thickness 1 in		Length 12 ft boards		
Width		3.5 in	4.5 in	5.5 in	7.25 in	9.25 in 11.25 in
Prime Pcs/Pallet		240	200	180	120	80 80
ColorPlus® Pcs/Pallet		240	200	180	120	80 80
Statement Collection®	•		•	•	AW	AW
Dream Collection®	•	•	•	•	•	•
Prime	•	•	•	•	•	•

5/4 Smooth		Thickness 1 in		Length 12 ft boards		
Width		3.5 in	4.5 in	5.5 in	7.25 in	9.25 in 11.25 in
Prime Pcs/Pallet		240	200	160	120	80 80
ColorPlus® Pcs/Pallet		240	200	160	120	80 80
Statement Collection®	•		•	•	AW	•
Dream Collection®	•	•	•	•	•	•
Prime	•	•	•	•	•	•

## Batten Boards

Thickness	.75 in
Length	12 ft
Width	2.5 in
Prime Pcs/Pallet	437
ColorPlus® Pcs/Pallet	190



Rustic Grain	
Statement Collection®	•
Dream Collection®	•
Prime	•



Smooth	
Statement Collection®	•
Dream Collection®	•
Prime	•



# Protection in every detail, complete confidence in every area.

## Hardie® Soffit

Every part of your home’s exterior matters. With Hardie® Soffit panels, you can live confidently, knowing that gaps between eaves and exterior walls are covered to provide trusted protection.

### DID YOU KNOW?

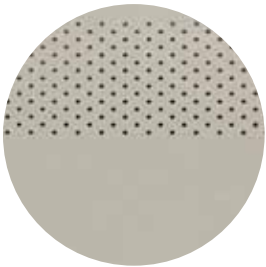
Using vented soffit improves ventilation and reduces the chance of water-vapor condensation that can promote mold, mildew and stains and which can damage your home’s framing over time.

In warm climates, vented soffit allows hot, humid air to escape, which not only helps prevent condensation in the attic, but also helps reduce air-conditioning costs.

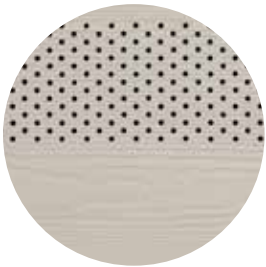
In cool climates, vented soffit helps prevent condensation from forming on the interior side of the roof sheathing and reduces the chances of roof-damaging ice dams.

Hardie® Soffit  
Vented Smooth  
Paper White

## Hardie® Soffit



Vented  
Smooth



Vented  
Select Cedarmill®



Non-Vented  
Smooth



Non-Vented  
Select Cedarmill®

Thickness 1/4 in				
Length	12 ft	12 ft	8 ft	8 ft
Width	12 in	16 in	24 in	48 in
Prime Pcs/Pallet	200	150	100	50
ColorPlus® Pcs/Pallet	216	156	108	—

### Vented Smooth

Size	12 ft x 12 in	12 ft x 16 in	8 ft x 24 in
Statement Collection®			
Dream Collection®	•	•	•
Prime	•	•	•

### Non-Vented Smooth

Size	12 ft x 12 in	12 ft x 16 in	8 ft x 24 in	8 ft x 48 in
Statement Collection®				
Dream Collection®	•	•	•	
Prime	•	•	•	•

### Vented Cedarmill®

Size	12 ft x 12 in	12 ft x 16 in	8 ft x 24 in
Statement Collection®	•		
Dream Collection®	•	•	•
Prime	•	•	•

### Non-Vented Cedarmill®

Size	12 ft x 12 in	12 ft x 16 in	8 ft x 24 in	8 ft x 48 in
Statement Collection®	•			
Dream Collection®	•	•	•	
Prime	•	•	•	•

## Beaded Porch Panel



Thickness	1/4 in
Size	4 ft x 8 ft
Bead Size	2 in o.c.
Prime Pcs/Pallet	50

Statement Collection®	
Dream Collection®	•
Prime	•

Bead edge lands on long edge of sheet to hide seams.



# Beauty begins with a finish that lasts.



## ColorPlus® Technology

ColorPlus® Technology finishes are fully cured on our boards in a controlled factory environment and arrive at your home ready for installation year-round. With prefinished color products, you'll have peace of mind, knowing you'll have a more consistent color and finish that doesn't depend on good weather.

With nearly 700 colors available, ColorPlus® Technology finishes offer endless design possibilities and help keep your home looking beautiful longer.



## Finishing Technology

### Primer

A quality primer is the first step to ensuring that the paint color you select expresses your home's true beauty now – and for years to come. Our distinctive primer is climate tested and engineered to enhance the performance of paint on Hardie® fiber cement exterior solutions. It helps to provide consistent, long-lasting paint adhesion, even in the most demanding conditions.

### ColorPlus® Technology

Our advanced ColorPlus® Technology finishes deliver the ultimate in aesthetics and performance. Our products aren't simply painted at the factory. Our proprietary coatings are baked onto the board, creating a vibrant, consistent finish that performs better, lasts longer and looks brighter on your home.



### Exceptional finish adhesion

Our proprietary coatings are engineered for exceptional adhesion to our substrate and applied to the surface, edges and features for durable performance.



### Superior color retention

The finish is cured onto boards for a stronger bond, which allows for exceptional resistance to cracking, peeling and chipping.



### Superior UV resistance

ColorPlus® Technology finishes are engineered to retain vibrancy and reduce fade or discoloration from UV rays.



Warranty —  
for peace of mind

Help protect your home with North America’s #1 brand of siding, backed by exceptional warranties. Unlike other companies, James Hardie doesn’t prorate Hardie® siding and trim substrate warranty coverage. We stand 100% behind Hardie® siding for 30 years and Hardie® trim for 15 years.

- Hardie® siding and soffit products come with a 30-year non-prorated limited substrate warranty.
- Hardie® trim products come with a 15-year non-prorated limited substrate warranty.
- ColorPlus® Technology finishes come with a 15-year prorated limited finish warranty.

Non-Prorated Siding Substrate Warranty Coverage by James Hardie



Endorsements —  
a reputation built on trust

For decades, our fiber cement products have been used to create better places to live. Each new home stands as a testament to our uncompromising quality. That proven track record has earned us the loyalty of millions of homeowners and the endorsements of trusted authorities across the building industry.



Make your  
home stand up  
and stand out.

Increase  
your home’s  
re-sale value\*

Re-siding with fiber cement siding is one of the top ways to increase your home’s re-sale value\*.



\*According to the Remodeling 2023 Cost vs. Value Report (www.costvsvalue.com). © 2023 Zonda Media, a Delaware Corporation. Complete data from the Remodeling 2023 Cost vs. Value Report can be downloaded free at www.costvsvalue.com.



FOR THE PROS

# Protection that performs at every layer.

## Hardie™ Weather Barrier

No exterior cladding can prevent 100% of water intrusion. Your home should have an additional line of defense. Hardie™ Weather Barrier provides a superior balance of water resistance and breathability, keeping the area within the wall drier. This helps prevent moisture accumulation that may lead to mold and mildew growth.



INSTALLATION ADVANTAGES

- Thicker, more durable material for easier, quicker installation
- Superior tear resistance helps prevent water infiltration
- Can be installed with staples in place of cap nails for cost savings
- Provides a higher level of performance, no matter what type of cladding you specify

Weather Barrier

Thickness	11 mil		
Length	100 ft	100 ft	150 ft
Width	3 ft	9 ft	9 ft

Pro-Flashing

Thickness	20 mil		
Length	75 ft	75 ft	75 ft
Width	4 in	6 in	9 in

Flex Flashing

Thickness	60 mil	
Length	75 ft	75 ft
Width	6 in	9 in

Seam Tape

Thickness	3.2 mil	
Length	164 ft	
Width	1-7/8 in	

## Installation Done Right

INSTALLATION ACCESSORIES

### Hardie™ Blade Saw Blades

Manufactured by Diablo, the Hardie™ Blade saw blade is designed specifically to cut fiber cement products and is the only saw blade James Hardie recommends. The blade creates clean, precise cuts while helping to reduce the amount of airborne dust produced.



### PacTool® Gecko Gauge

The PacTool® Gecko Gauge is designed to improve the installation experience, allowing one person to hang Hardie® Plank lap siding during installation. Studies suggest the Gecko Gauge can improve the speed of solo installation by 30%.



## Finishing Touches

COLORPLUS® TECHNOLOGY ACCESSORIES

### Touch-Up Kits

Specially formulated to match ColorPlus® Technology finishes, our touch-up kits offer resistance to aging, color change and chalking. Estimated one kit per 4,000 sq ft of siding or 1,600 sq ft of trim.



### Color-Matched Caulk

OSI® QUAD® MAX sealant offers a high-performance sealant solution to color match Statement Collection™ products.\* About 18–20 linear feet per tube. Refer to packaging for manufacturer's recommendations.

\*For matching Dream Collection® products, contact your local James Hardie representative.

TRIM ACCESSORIES

### Flat Tabs

Eliminate face nails and improve the aesthetic of trim applications around windows, doors and band boards.

### Corner Tabs

Use corner tabs to eliminate face nail holes that would detract from the finished look of corner trim installations.



Scan code to view install and technical documents.





#MyHardieHome | 1.888.542.7343 | jameshardie.com



© 2023 James Hardie Building Products, Inc. All Rights Reserved. <sup>TM</sup> and © denote a trademark or registered trademark owned by James Hardie Technology Ltd. Magnolia Home and the Magnolia Home logo are trademarks of Magnolia Business Ventures LLC. HOVER is a registered trademark of Hover Inc. OSI, QUAD and PACTOOL are trademarks of their respective owners. **HS2188-MCO 04/23**



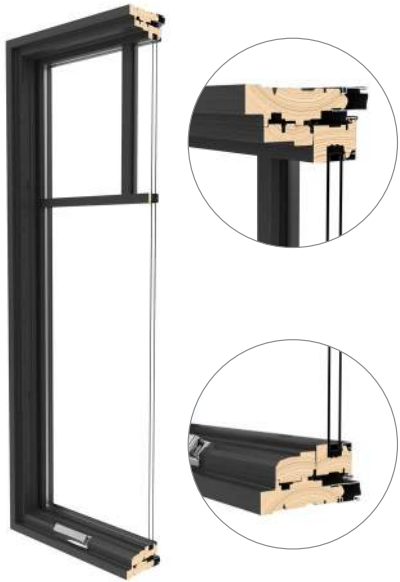
# Pella® Reserve™

## Contemporary Clad/Wood

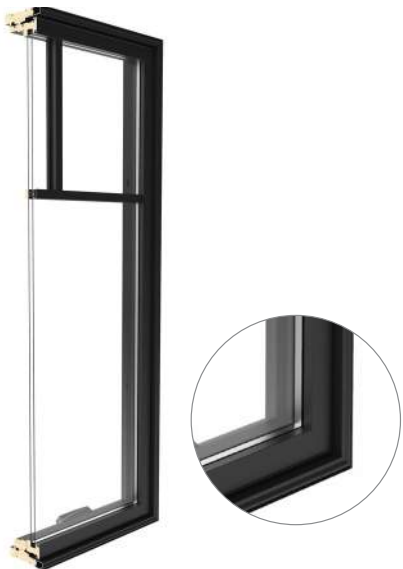


Simple and sophisticated designs that embody the tenets of pure, contemporary style.

Interior



Exterior



- Clean lines**  
 Bring your vision to life with expansive glass options combined with some of the narrowest sightlines in the industry.
- Modern hardware**  
 Our renowned, exclusive hardware has set the bar for the industry. Featuring sleek lines, the Saldo foldaway crank adds the perfect finishing touch.
- Architectural interest**  
 Our industry-leading modern designs with through-stile construction deliver a clean sash joint with pure, 90-degree exteriors. Square grille profiles provide another layer of design flexibility.
- Virtually unlimited customization**  
 If you can dream it, we can build it with our most customizable product line. From extra tall to extra wide, Pella can craft unique windows that complement your aesthetic. Custom sizes, grille patterns and designs, finishes, wood types and glass options are available.
- Tailor-made solutions**  
 From preliminary drawings to installation, Pella's expert team of architects, engineers, drafters and consultants can work to deliver custom window and door solutions for your project. Partner with Pella to achieve your unique vision without concessions.
- Cutting-edge innovation**  
 Our intentional innovations solve modern-day inconveniences without compromising on design. Preserve the beauty of Pella Reserve windows and doors while protecting what matters most with integrated security sensors.
- Durable interiors and extruded aluminum exteriors**  
 To help save you time on the jobsite, interior finish options are available in a variety of paints, stains and primed and ready to paint. To complement your exterior aesthetic, choose from our carefully curated color palette or define your own custom color for your project.
- ENERGY STAR® certified<sup>1</sup>**  
 Pella wood products offer energy-efficient options that will meet or exceed ENERGY STAR guidelines in all 50 states.
- Testing beyond requirements**  
 At Pella, our products are tested beyond requirements to help ensure they have long-lasting performance and reduce call-backs for you.
- Best limited lifetime warranty<sup>2</sup>**  
 Pella Reserve products are covered by the best limited lifetime warranty in the business for wood windows and patio doors.<sup>2</sup>

Available in these window and patio door styles:



Special shape windows also available.

<sup>1,2</sup> See back cover for disclosures.



Product Specifications

Window & Patio Door Styles	Min. Width	Min. Height	Max.Width	Max. Height	Performance Class & Grade	Performance Values			Frame / Install
						U-Factor	SHGC	STC	
Awning	13-¾"	13-¾"	73"	73"	LC30-CW50	0.19-0.48	0.15-0.55	26-34	Fold-out Fin, Block Frame, EnduraClad Exterior Trim/Brickmould
Casement	13-¾"	13-¾"	47"	108"	R30-CW50	0.19-0.48	0.15-0.54	26-34	
Fixed Casement/Fixed Awning	10"	13-¾"	144"	144"	CW30-CW50	0.16-0.50	0.16-0.50	28-33	
In-Swing Hinged Patio Door (Single)	24"	48"	48"	119-½"	LC40-LC55	0.25-0.29	0.14-0.40	31-35	
In-Swing Hinged Patio Door (Double)	48"	79-½"	96"	119-½"	LC40-LC55	0.25-0.29	0.14-0.40	31-35	
Out-Swing Hinged Patio Door (Single)	24"	48"	48"	119-½"	LC40-LC70	0.25-0.30	0.14-0.39	30-36	
Out-Swing Hinged Patio Door (Double)	48"	48"	96"	119-½"	LC40-LC70	0.25-0.30	0.14-0.39	30-36	
Sliding Patio Door (O)	30-¾"	74"	60-⅞"	119-½"	LC30-LC70	0.25-0.31	0.18-0.51	–	
Sliding Patio Door (OX, XO)	59-¼"	74"	119-¼"	119-½"	LC30-LC65	0.25-0.31	0.18-0.51	29-35	
Sliding Patio Door (OXO)	90"	74"	180"	119-½"	LC30-LC45	0.25-0.31	0.18-0.51	–	
Sliding Patio Door (OXXO)	116-1/8"	74"	236-⅙"	119-½"	LC25-LC40	0.25-0.31	0.18-0.51	–	For more info visit PellaADM.com
Multi-Slide Patio Door	41-⅞"	50-½"	713-5/8"	119-½"	R15-LC25 <sup>3</sup>	0.30-0.36	0.15-0.46	31	
Bifold Patio Door	32-⅙"	41"	425-⅞"	119-½"	R15-LC25 <sup>3</sup>	0.26-0.44	0.13-0.45	–	

Window sizes available in 1/8" increments  
Special sizes available. For more information regarding performance, visit pella.com/performance. For more information regarding frame and installation types, visit PellaADM.com.

Grilles

Integral Light Technology<sup>®4</sup> Choose the look of true divided light or make cleaning easier by selecting grilles-between-the-glass.



Square 5/8"



Square 7/8"



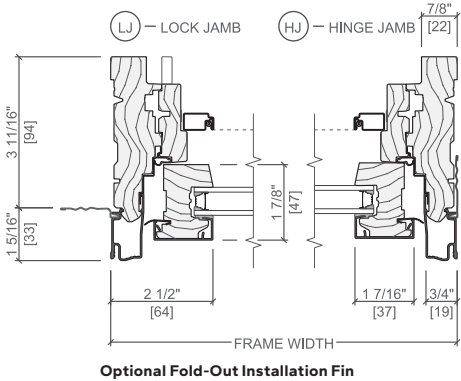
Square 1 1/4"



Square 2"

Attention to Detail

Cross Sections The venting casement cross sections provide visual reference to the squared-off profile on both the lock and hinge jamb and the consistent sightline this will provide from interior through to exterior.



Optional Fold-Out Installation Fin

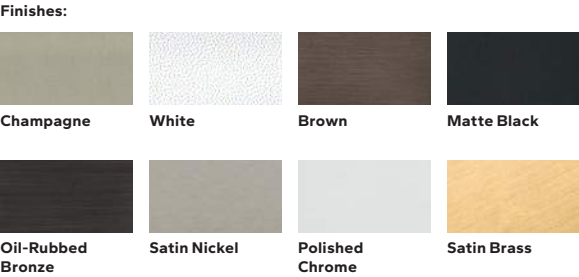
<sup>3,4</sup> See back cover for disclosures.

Window Hardware

Modern Collection Achieve the ultimate contemporary look with exclusive hardware designed by Pella. Our renowned modern hardware has set the bar for the industry. Featuring sleek lines, the Saldo fold-away crank adds the perfect finishing touch.



Fold-away Crank  
Saldo



Patio Door Hardware

Modern Collection Select modern hardware created in collaboration with Baldwin<sup>®</sup> to achieve the ultimate contemporary look with sleek finishes.

BALDWIN<sup>®</sup>



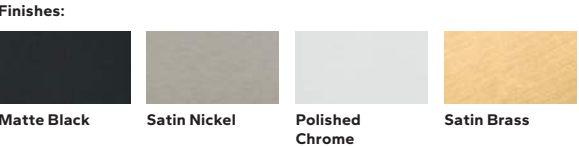
Hinged & Bifold  
Patio Door Handle  
Spiere



Sliding & Multi-Slide  
Patio Door Handle  
Plazo



Multi-Slide Patio  
Door Handle<sup>5,6</sup>



Essential Collection

Elevate your style and transform a home with elegant selections.



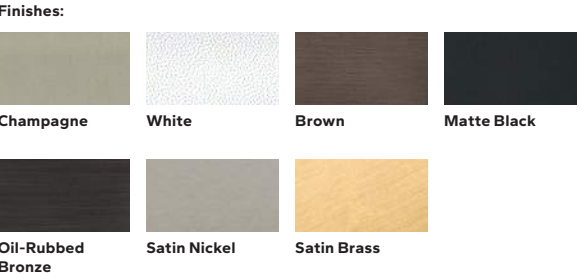
Hinged & Bifold  
Patio Door Handle  
Standard



Sliding Patio  
Door Handle  
Standard



Multi-Slide Patio  
Door Handle<sup>5,6</sup>



Additional hardware collections available. Visit PellaADM.com for more information.

Added Peace of Mind

Integrated Security Sensors Integrated wireless security sensors maintain aesthetics, streamline security installation and ensure no warranty loss is caused by post-installation drilling. Sensors can be monitored via the free Pella<sup>®</sup> Insynctive<sup>®</sup> App and are compatible with major security panel systems.<sup>7</sup> For more information, go to connectpella.com.

<sup>5,6,7</sup> See back cover for disclosures.



Colors

Wood Types

Choose the wood species that best complements your project's interior.

Custom solutions:



Pine



Douglas Fir



Mahogany



White Oak



Red Oak



Cherry



Maple

Prefinished Pine Interior Colors

Custom interior finishes, unfinished or primed and ready-to-paint are also available.



White



Bright White



Linen White




Natural Stain



Golden Oak Stain



Early American Stain



Provincial Stain



Dark Mahogany Stain



Red Mahogany Stain



Espresso Stain



Charcoal Stain



Black Stain

Extruded Aluminum-Clad Exterior Colors

Our low-maintenance EnduraClad® exterior finish resists fading. Take durability one step further with EnduraClad Plus which also resists chalking and corrosion.<sup>8</sup>



Black



White



Brown



Fossil



Iron Ore



Portobello



Putty



Almond



Classic White



Brick Red



Hartford Green



Pearl Gray



Soft Linen



Satin Steel



Matte Gray



Wolf Gray



Spice Red



Sage



Frost Blue



Blue Ash



Custom colors are also available.



The Best Limited Lifetime Warranty in the Industry

We know your reputation matters and you stake your reputation on quality, dependable products. That's why we have the best limited lifetime warranty in the industry for wood windows and patio doors.<sup>2</sup>

<sup>1</sup> Some Pella products may not meet ENERGY STAR® guidelines in Canada. For more information, contact your local Pella sales representative or go to [energystar.gc.ca](http://energystar.gc.ca).

<sup>2</sup> Based on comparing written limited warranties of leading national wood window and wood patio door brands. See written limited warranty for details, including exceptions and limitations, at [pella.com/warranty](http://pella.com/warranty) or contact Pella Customer Service.

<sup>3</sup> Ratings are contingent on product configurations.

<sup>4</sup> Color-matched to your product's interior and exterior color.

<sup>5</sup> Flush multi-slide handle is a Pella exclusive design.

<sup>6</sup> Flush multi-slide handle is not available in Champagne.

<sup>7</sup> Requires the Insynctive App on a smart device, an Insynctive Bridge and a wireless home router with internet connection.

<sup>8</sup> EnduraClad Plus protective finish is not available with all colors. See your local Pella sales representative for availability.



# Restaurant Glass Garage Doors



## Indoor Becomes Outdoor

Beautiful views in the winter transform into outdoor open space in the summer.



American Door offers a full line of restaurant glass garage doors to fulfill the needs of restaurants, bars, and storefront businesses.

- >> Push-up, Chain Hoist, or Motorized
- >> Style and Color Options to Match Any Space
- >> Maximum Visibility
- >> Insulated Glass
- >> Weather Sealed

**AmericanDoor.com**  
**(631) 586-8006 (718) 895-6136**

9 LUCON DR, DEER PARK, NY 11729





With so many configurations, nearly two hundred frame colors, and numerous types of glass panels and glass alternatives, your design imagination can be satisfied.



**AmericanDoor.com**  
**(631) 586-8006 (718) 895-6136**  
 9 LUCON DR, DEER PARK, NY 11729





## Not Only for Chill Atmospheres:

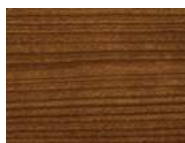
Our Restaurant Glass Garage Doors complete the perfect workspace, where collaborators, entrepreneurs, and high-output doers can get together and make things happen!



### Wood Grain Powder Coat Options for the Frame:



Knotty Pine



Cherry



Cherry with  
Flame



Dark Walnut

### Standard Powder Coat Options for the Frame:



**AmericanDoor.com**  
**(631) 586-8006 (718) 895-6136**

9 LUCON DR, DEER PARK, NY 11729





## STANDARD FEATURES OVERVIEW

### CONSTRUCTION

MAX HEIGHT	16'1" (4.9 meters)
MAX WIDTH	26'2" (8 meters)
MOUNTING	2" (51mm) Track, Angle
OPERATION	Manual Lift-Up, Motorized
FRAME	6063-T6 or 6061-T6 Aluminum
SECTION THICKNESS	1 <sup>3</sup> / <sub>8</sub> " - 1 <sup>3</sup> / <sub>4</sub> "
HINGES	Galvanized Steel.
LOCKING OPTIONS	Interior-mounted Side Lock, Key lock, and Interlock for Motorized Units.
WEATHER STRIPPING	Optional Flexible PVC Jamb and Header Seals
SPRINGS	25k, 50k, and 100k Cycles
WARRANTY	1-Year limited Warranty

### OTHER OPTIONS:

- Insulated Rail and Stiles
- Powder Coat Finish
- Anodized Bronze, Clear, or Black Aluminum
- Wind Load Options up to 30 psf
- Glass can be Annealed, Tempered, Wire, Laminate, Acrylic, or Polycarbonate
- Track can be Standard Lift, High Lift, Roof Pitch, Vertical Lift, Low Headroom Rear-mount, or Low Headroom Front-Mount
- Pass Door
- Bottom Sensing Edge
- Exhaust Ports

### Glass Finishes:



Double-Strength  
DSB  
(Standard)



Obscure



Satin Etched



Grey Tint



Green Tint



Bronze Tint



Impacted  
Frosted  
Polycarbonate

When you need Restaurant Glass Garage Doors  
call



**AmericanDoor.com**  
**(631) 586-8006 (718) 895-6136**

9 LUCON DR, DEER PARK, NY 11729

