



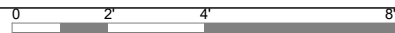
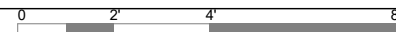
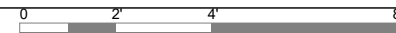
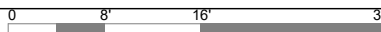


27/2025

145 AURORA ST. HUDSON, OHIO, 44236

02-27-2025

© 2024 Peninsula Architects LTD



PROGRESS  
NOT FOR  
CONSTRUCTION

2/27/2025

BECKWITH BARN

145 AURORA ST. HUDSON, OHIO, 44236

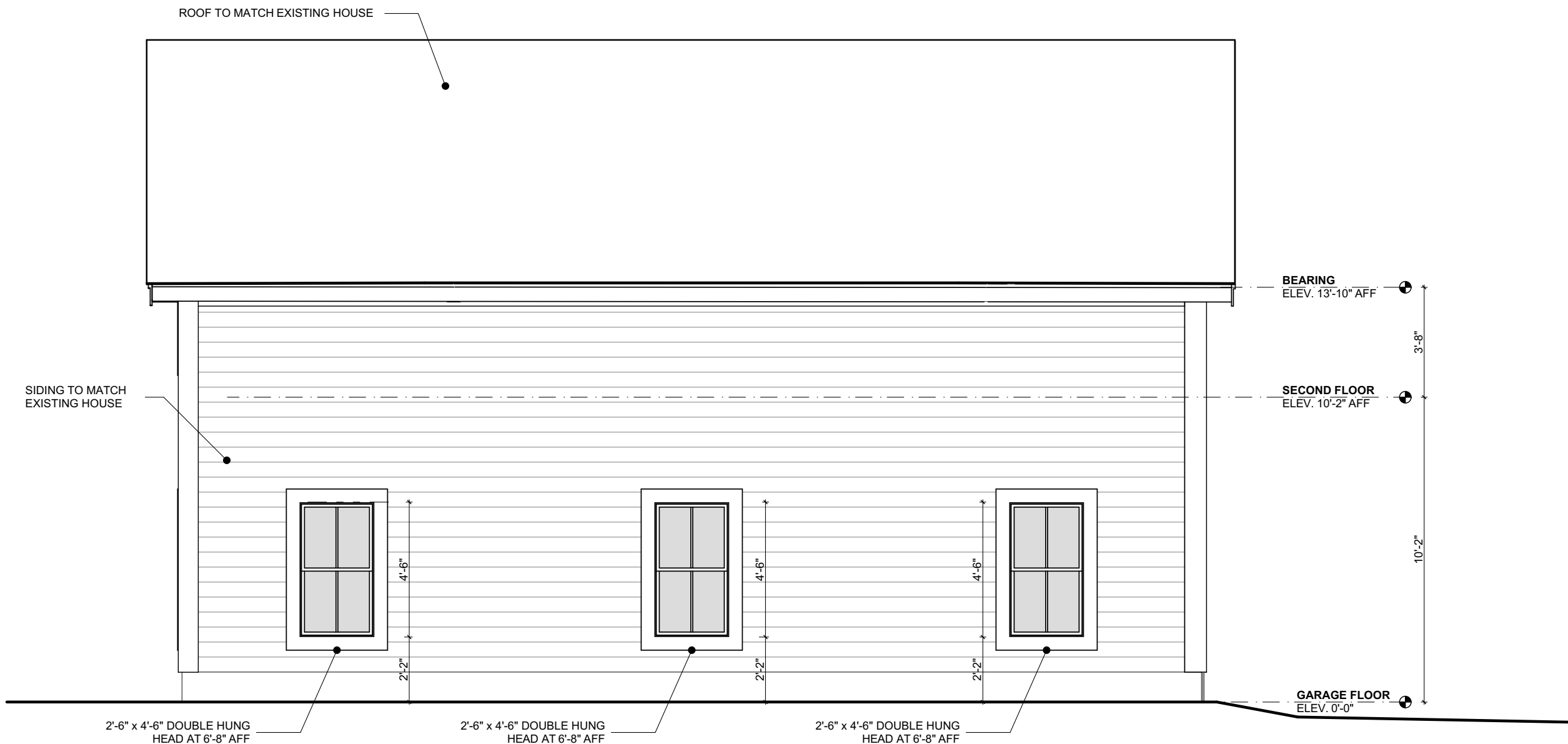
PROJECT #: 2124

ISSUE:  
SD MEETING 08-28-2024  
REVISION 1 10-03-2024  
ARB 02-24-2025  
REVISION 2 (ARB) 02-27-2025

EXTERIOR ELEVATIONS

A2.00

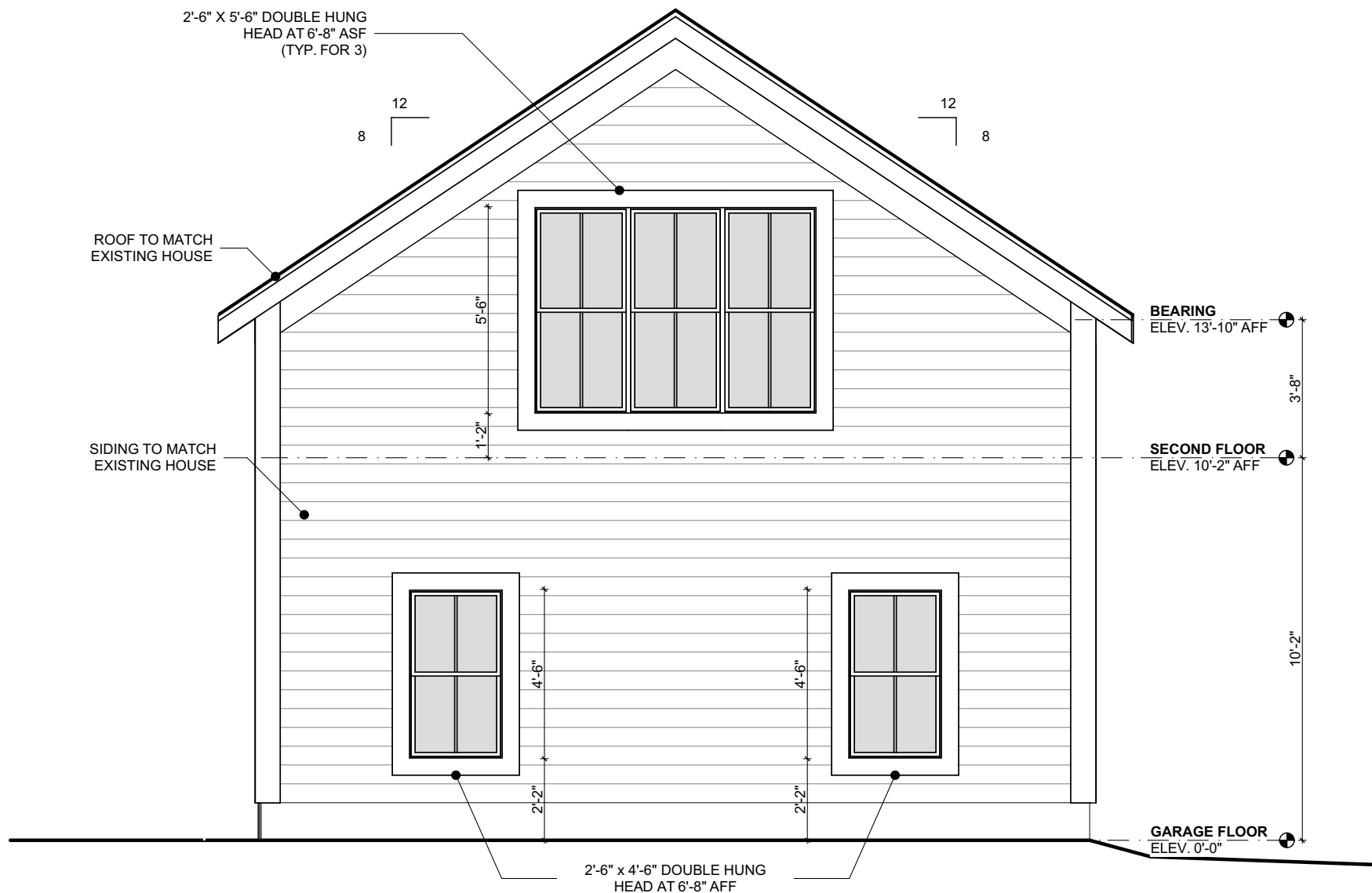
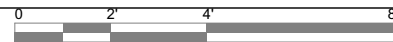
© 2024 Peninsula Architects LTD



1

SIDE ELEVATION 2

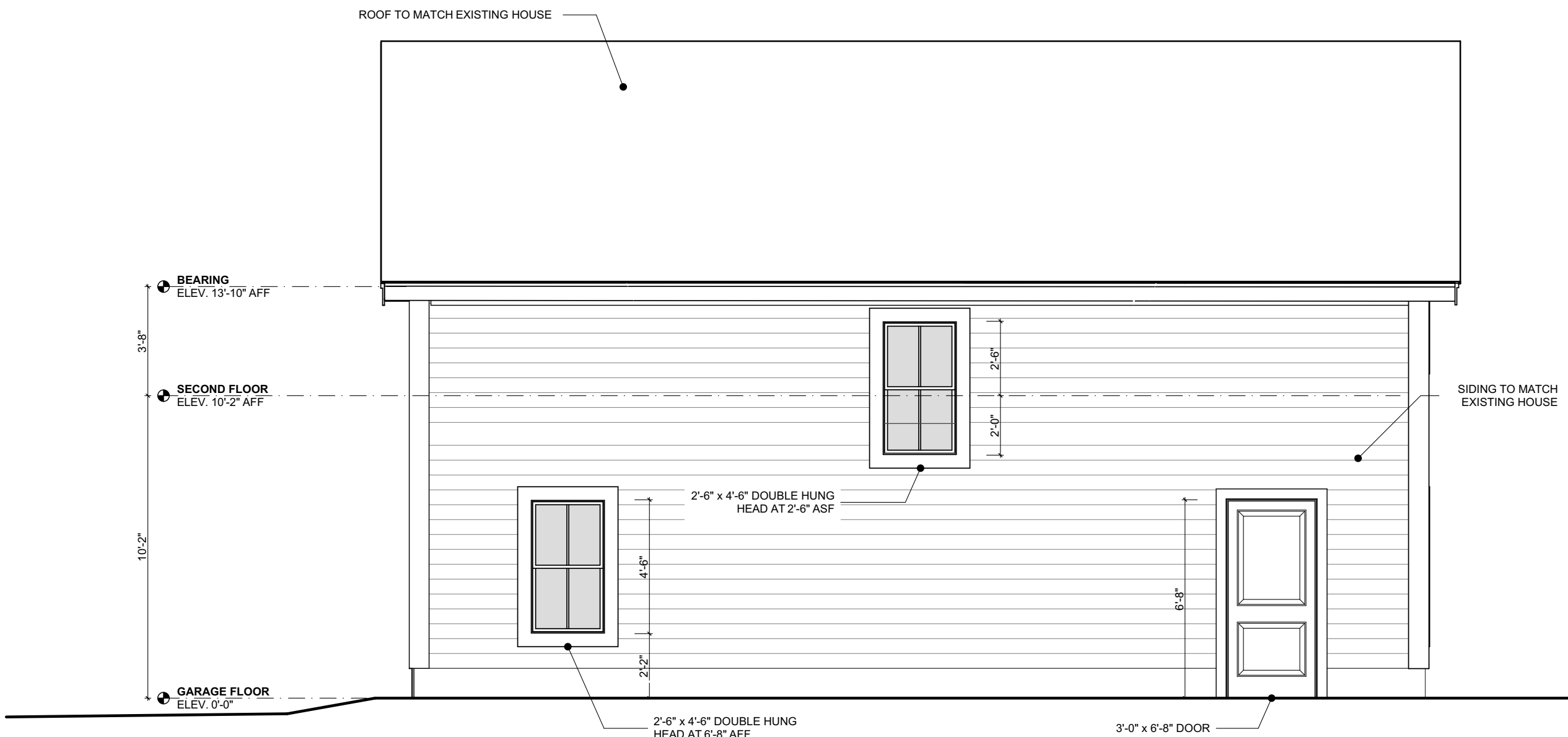
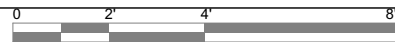
SCALE: 1/4" = 1'-0"



2

BACK ELEVATION

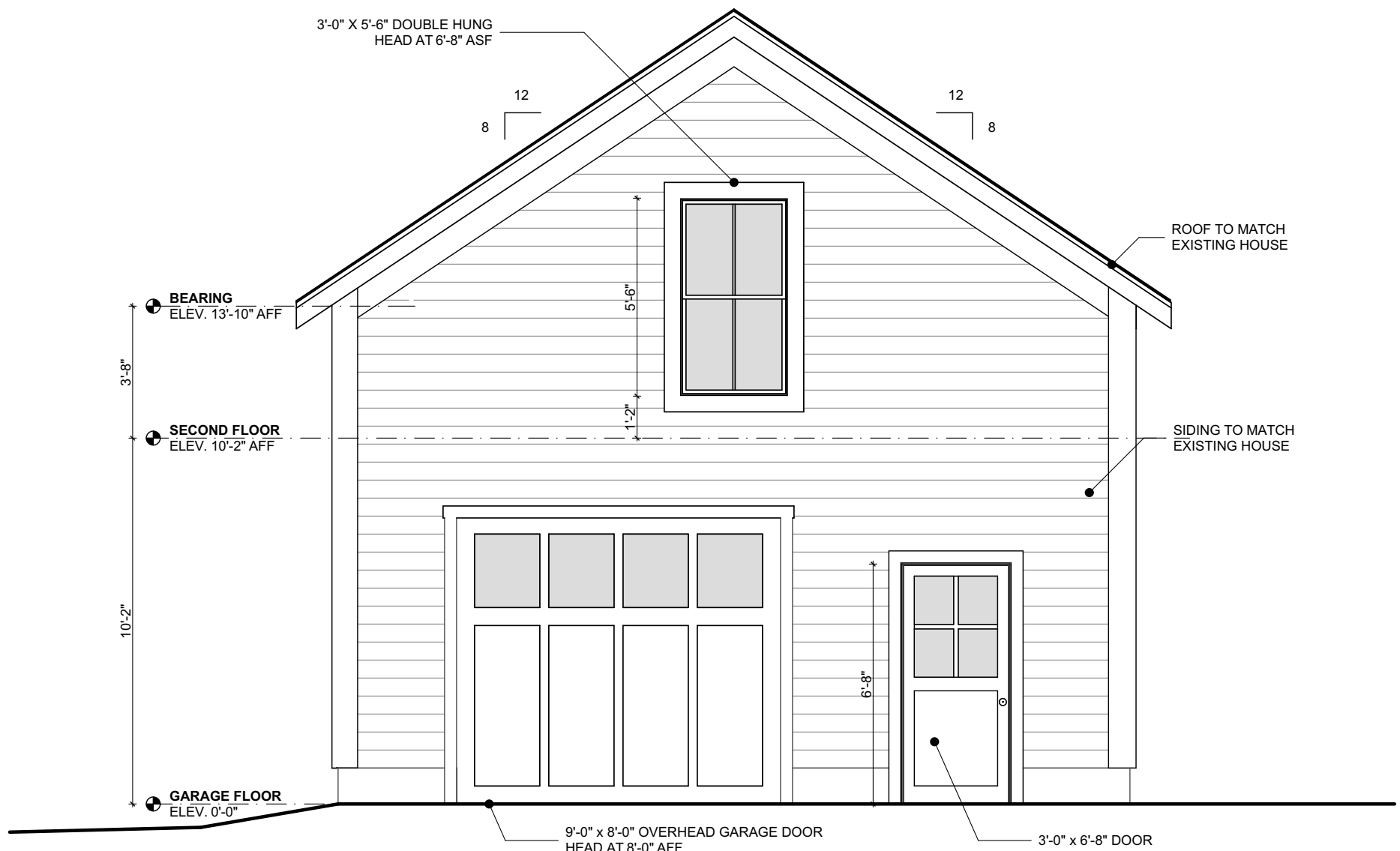
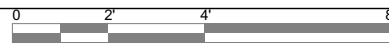
SCALE: 1/4" = 1'-0"



3

SIDE ELEVATION

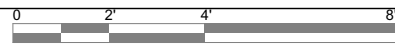
SCALE: 1/4" = 1'-0"

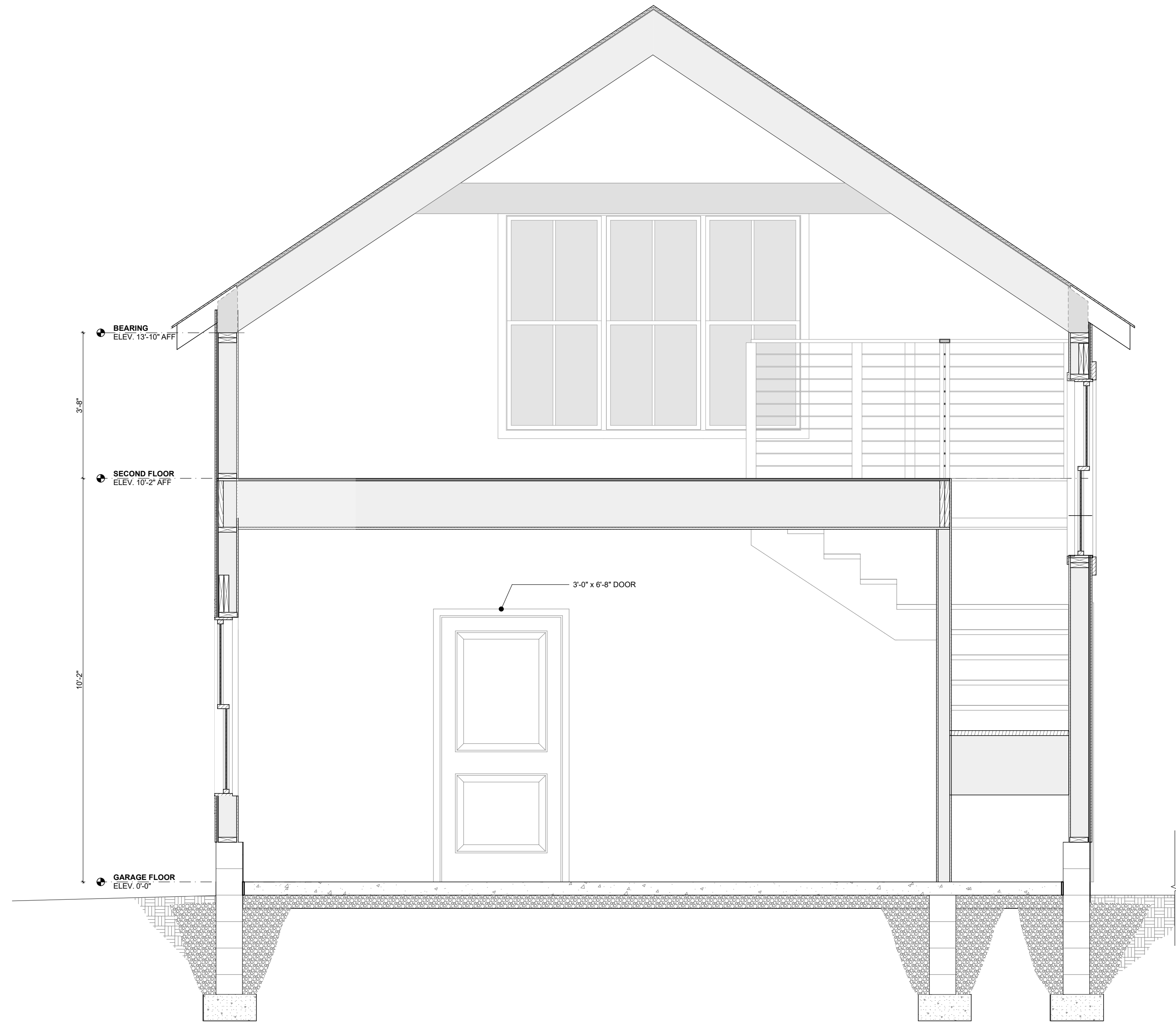


4

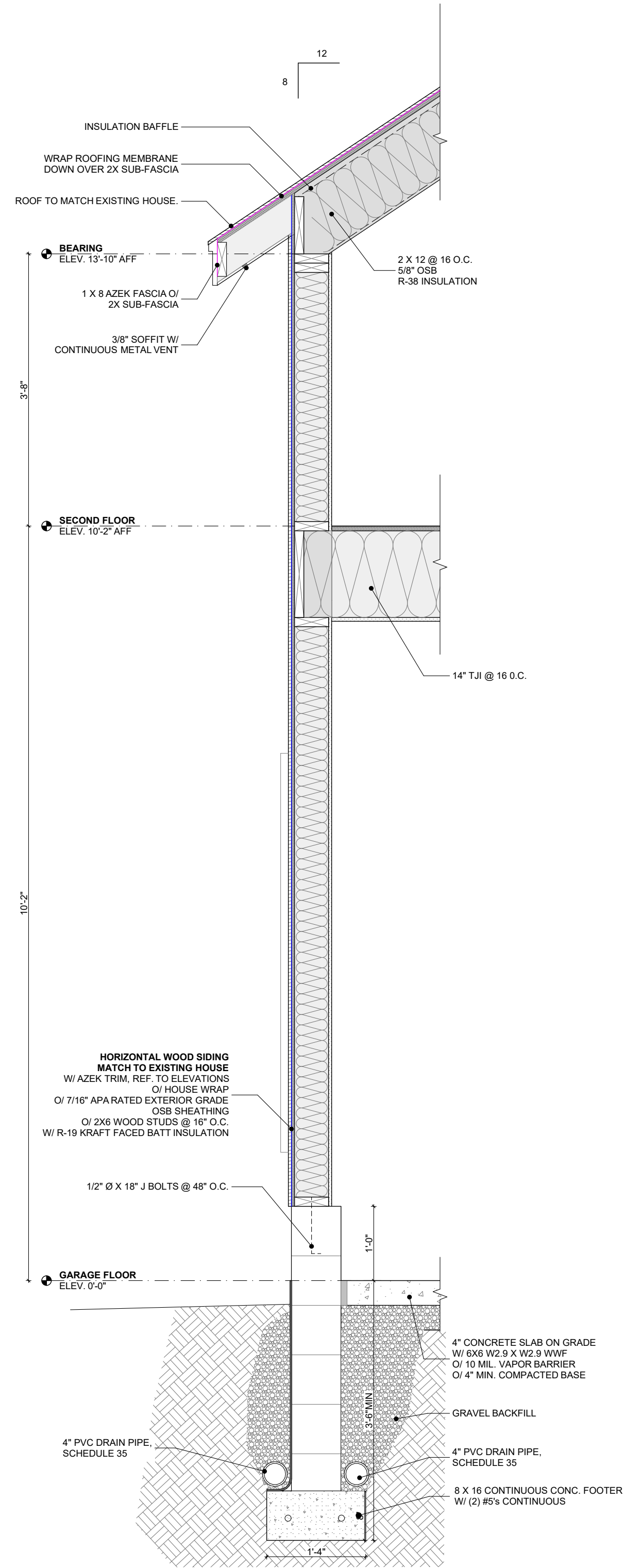
FRONT ELEVATION

SCALE: 1/4" = 1'-0"





1 TRANSVERSE SECTION  
SCALE: 1/2" = 1'-0"



2 TYPICAL WALL SECTION  
SCALE: 3/4" = 1'-0"





145 AURORA STREET - BECKWITH OUTBUILDING - EXISTING CONDITIONS



Canyon Ridge® / Carriage House 4-Layer, Design 21; Shown in Ultra-Grain® Cypress  
Slate Finish with Clear Cypress Overlays in Slate Finish and SQ24 Window Design  
Photo Credit: Living Stone Design + Build, Ryan Theede Photography



RUSTIC looks  
REFINED

# CANYON RIDGE® Carriage House

## 4-LAYER CONSTRUCTION

Another beautiful, low-maintenance alternative to real wood is the Canyon Ridge® Carriage House 4-Layer faux-wood garage door. Similar in style and construction to its 5-Layer counterpart, it also has an energy-efficient Intellicore® polyurethane insulated steel core topped with Clear Cypress composite overlays to create a carriage house design. The 4-Layer door has fully visible steel panels that can be finished in Ultra-Grain® for a stained wood-look or painted a solid color to match your home.



- 1 COMPOSITE OVERLAY
- 2 STEEL WITH ULTRA-GRAIN® FINISH (SHOWN) OR SOLID COLOR STEEL
- 3 2" INTELICORE® POLYURETHANE INSULATION
- 4 STEEL

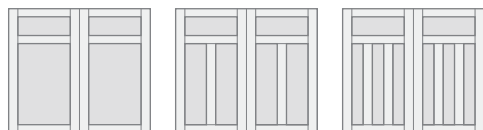
## STYLE AND CONSTRUCTION

- 4-layer, steel and composite overlay doors with Intellicore® polyurethane insulation. 18.4 R-value.
- Insulated glass options include clear, frosted, seeded, rain and obscure. See page 16 for details.
- Removable clip-in window grilles for easy cleaning.
- Spade lift handles and step plates included. See page 17 for more options.

*Calculated door section R-value is in accordance with DASMA TDS-163. Canyon Ridge® doors not applicable for new construction in California areas designated as "Fire Hazard Severity Zones".*

## DOOR DESIGNS

### SERIES 1



Design 11

Design 12

Design 13

### SERIES 3



Design 31

Design 32

Design 33

Design 34

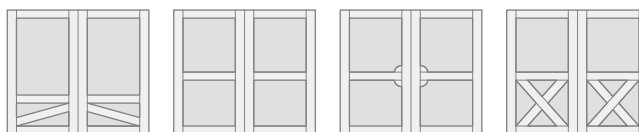
### SERIES 2



Design 21

Design 22

Design 23



Design 35

Design 36

Design 37

Design 38

## MATERIAL DESIGN OPTIONS

### STEEL BASE — OVERLAY



Ultra-Grain® Finish  
Clear Cypress  
or Solid Color Steel (N)

Clear Cypress (C)

Mahogany (M)

*Composite cladding is not present on Carriage House 4-Layer doors.*

## COLORS



Ultra-Grain® Cypress  
Medium Finish

Bronze  
Finish\*

White Finish\*

Primed  
(No Finish)



Ultra-Grain® Cypress  
Walnut Finish

Charcoal  
Finish\*



Ultra-Grain® Cypress  
Slate Finish

Black  
Finish\*

*Doors can be ordered primed for custom field painting. Note: Primed solid steel base is brown. Overlay stain color may vary due to finishing process.*

*\*Bronze, Charcoal, Black and White Finish available only on Mahogany overlays.*

*Two-tone doors are available. To see all options go to: [dis.clopay.com](http://dis.clopay.com).*

*Steel surfaces have woodgrain texture.*

*Due to the printing process, colors may vary. Order free color samples at [clopaydoor.com/requestcolorsamples](http://clopaydoor.com/requestcolorsamples).*

## WARRANTIES



## WINDOWS/TOP SECTIONS



REC11

REC13

REC14

SQ23

SQ24



ARCH1 (Glass)

ARCH13

ARCH14

ARCH3

ARCH4



TOP11

TOP12

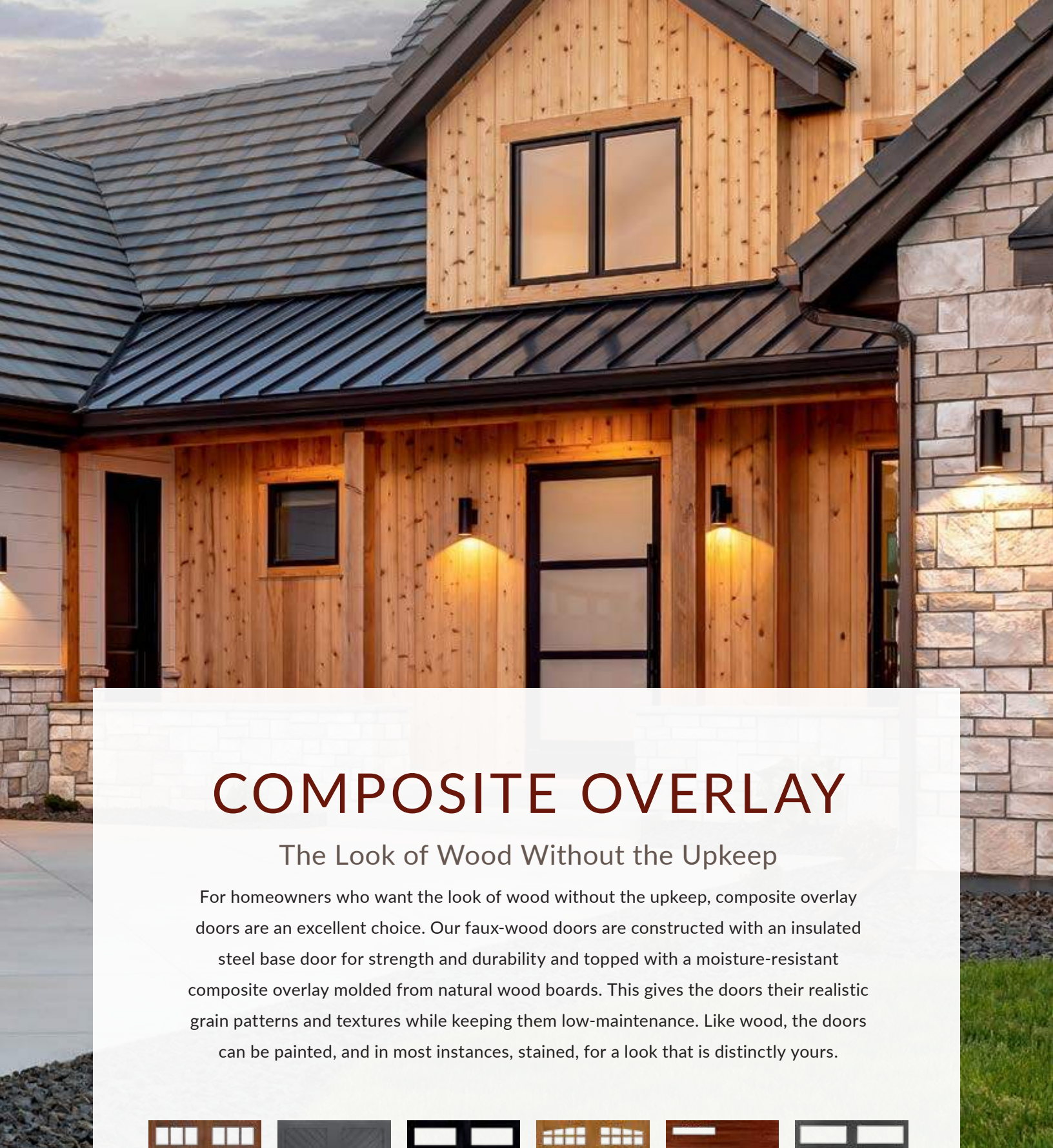
TOP13

ARCH1 (Solid)

*Impact windows available on the following widths only: 8'0", 9'0", 10'0", 12'2", 16'2", 18'2". Additional designs, windows and top sections available.*

*Windows not available on Designs 31, 32, 33, 34, 35, 36, 37 and 38. Standard windows available on the following widths only: 6'2", 8'0", 9'0", 10'0", 10'2", 12'0", 12'2", 13'6", 15'0", 15'2", 15'6", 15'8", 16'0", 16'2", 18'0", 18'2", 20'0", 20'2".*





# COMPOSITE OVERLAY

## The Look of Wood Without the Upkeep

For homeowners who want the look of wood without the upkeep, composite overlay doors are an excellent choice. Our faux-wood doors are constructed with an insulated steel base door for strength and durability and topped with a moisture-resistant composite overlay molded from natural wood boards. This gives the doors their realistic grain patterns and textures while keeping them low-maintenance. Like wood, the doors can be painted, and in most instances, stained, for a look that is distinctly yours.



CARRIAGE HOUSE  
5-LAYER



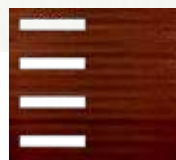
CHEVRON



LOUVER



CARRIAGE HOUSE  
4-LAYER



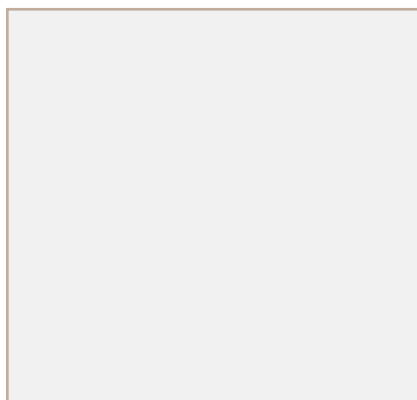
MODERN



ELEMENTS



# SPECIALTY GLASS



Clear



Frosted



Seeded\*



Obscure



Rain

*\*Seeded is not available on Canyon Ridge® Modern window options.*

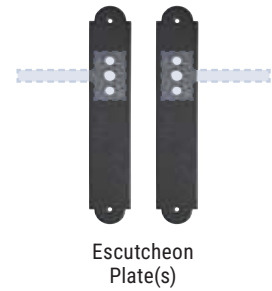
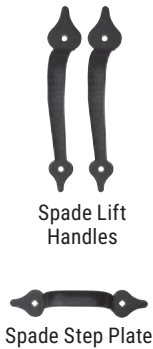
*Canyon Ridge® Elements is not available with insulated glass options.*

*Additional charges for optional glass apply.*



# DECORATIVE HARDWARE

Attractive black powder coated handles and step plates are provided standard to further enhance the Canyon Ridge® Design. Optional decorative hardware – including handles, operable L-keylocks and strap hinges, is also available.



\* Door may not open properly if installed near the top depending on opening dimensions and lift type.

Aluminum Grip Handles are available in the following colors: Clear Aluminum (Anodized), Standard White (Painted), Bronze (Painted), Bronze (Anodized), Black (Anodized) and Dark Bronze (Anodized).



## CUSTOM PAINT PROGRAM

Color Blast® offers more than 1,500 Sherwin-Williams® color options to complement your home. Clopay's durable two-part paint system has been thoroughly tested and is backed by a five-year warranty.



**COLOR BLAST®**







*Canyon Ridge® / Carriage House 5-Layer, Design 11;  
Shown Custom Painted with Mahogany Cladding,  
Mahogany Overlays and REC14 Window Design*







Russin distributes a full assortment of kiln-dried Western Red Cedar bevel siding in both clear and knotty grades. Bevel is the most common type of siding and provides an attractive shadow line which varies with the thickness of the chosen siding.

## Western Red Cedar Bevel Siding

### Clear Grades ▶

Clear bevel siding is available in many different grades and sizes. Listed below are items and sizes typically available with a random length tally. All clear grades are graded on the smooth face with the exception of Rustic which is graded for saw textured use only.

#### Clear Vertical Grain (CVG) and Aye & Better (A&BTR)

- 1/2" x 4"
- 1/2" x 6"
- 1/2" x 8"
- 3/4" x 8"
- 3/4" x 10"
- 3/4" x 12"

#### Rustic

- 1/2" x 6"
- 1/2" x 8"
- 3/4" x 8"
- 3/4" x 10"

#### B Clear (BEE)

- 1/2" x 6"

### ◀ Knotty Grades

When a rustic appearance is desired, knotty bevel siding is a great choice. Russin maintains an inventory of select knotty grade in various sizes and thicknesses. Listed below are items typically available with a random length tally. All knotty grades are graded on the saw textured face only.

#### Select Knotty (SK)

- 1/2" x 6"
- 11/16" x 8"
- 3/4" x 10"
- 15/16" x 10" Van Spec Skirl

### ▶ Primed Clear Fingerjoint

Primed fingerjoint bevel siding by Russin is an ideal cost-effective alternative when a painted surface and long lengths are desired. Primed fingerjoint bevel siding provides building contractors and homeowners with the warmth, beauty and natural decay-resistance of real Western Red Cedar, plus the built-in protection of a superior quality primer. Depending upon the size, one or two coats of primer in Cape Cod Gray is machine-applied at our state-of-the-art facility.

Bevel siding is all 16' lengths with a maximum of 10% trimbacks.

#### Available Grades/Sizes

##### Clear Vertical Grain (CVG) and Aye & Better (A&BTR)

- 1/2" x 6"
- 1/2" x 8"
- 3/4" x 8"
- 3/4" x 10"
- 3/4" x 12"



## Western Red Cedar

# PANELING

Kiln-dried Western Red Cedar paneling from Russin is available in both clear and knotty grades. Paneling creates beautiful exterior siding, soffits, interior walls, and ceilings. Products may be installed vertically, horizontally or diagonally, with each method providing a different design style.

### Clear Grades

Clear tongue and groove paneling provides a formal appearance and is available in many different grades and sizes. Listed below are items typically available with a random length tally. All clear grades are graded on the smooth face with a resawn back.

V4E means v-joints on all four edges.

#### Clear Vertical Grain (CVG) and Aye & Better (A&BTR) Tongue & Groove (T&G)

- 1" x 4" T&G V4E
- 1" x 6" T&G V4E
- 1" x 8" T&G V4E

#### Center Matched Tongue & Groove (CM,T&G)

- 1" x 6" CM, T&G
- 1" x 4" CM, T&G

### Knotty Grades

Knotty tongue and groove paneling provides a more rustic or casual appearance. Listed below are items typically available with a random length tally. Products are graded on the smooth face with a resawn back. V2E means v-joints on two edges of the smooth face.

V4E means v-joints on all four edges.

#### Select Knotty (SK)

##### Tongue & Groove (T&G)

- 1" x 4" T&G V2E
- 1" x 6" T&G V2E
- 1" x 6" T&G V4E
- 1" x 8" T&G V2E
- 1" x 8" T&G V4E

#### Channel Rustic Lap Pattern

- 1" x 8"
- 1" x 10"

#### Shiplap

- 1" x 8"

#### Fineline Tongue & Groove (T&G)

- 1" x 6"
- 1" x 8"



Kiln-dried Western Red Cedar trim boards from Russin are available in both clear and knotty grades. Western Red Cedar trim is an ideal choice for all exterior and interior applications including corner boards, fascia, rake, soffits, skirts, and window and door trim. Texture options include surfaced one side and two edges (S1S2E) and surfaced four sides (S4S).

Western Red Cedar

# TRIM BOARDS

### Clear Grades ▶

Clear trim boards provide a fine grain, formal appearance and are available in many different grades and sizes. Listed below are items typically available with a random length tally.

#### Clear Vertical Grain (CVG) and Aye & Better (A&BTR)

- 1" x 4" S1S2E
- 1" x 6" S1S2E
- 1" x 8" S1S2E
- 1" x 10" S1S2E
- 1" x 12" S1S2E
- 5/4" x 4" S1S2E
- 5/4" x 6" S1S2E
- 5/4" x 8" S1S2E
- 5/4" x 10" S1S2E
- 5/4" x 12" S1S2E

#### D and Better Grade (D&BTR) C and Better Grade (C&BTR)

- 1" x 4" S1S2E
- 1" x 6" S1S2E
- 1" x 8" S1S2E
- 1" x 10" S1S2E
- 1" x 12" S1S2E

### Knotty Grades ▼

Knotty trim boards provide a more rustic or casual appearance and are available in a select knotty grade. Listed below are the sizes typically available. Knotty boards are graded on the textured face with a smooth back.

#### Select Knotty 10/15% Quality

- 1" x 4" S1S2E
- 1" x 6" S1S2E
- 1" x 8" S1S2E
- 1" x 10" S1S2E
- 1" x 12" S1S2E
- 5/4" x 4" S1S2E
- 5/4" x 6" S1S2E
- 5/4" x 8" S1S2E
- 5/4" x 10" S1S2E
- 5/4" x 12" S1S2E

### Fortress Primed Clear Vertical Grain Fingerjoint ▼

Fortress primed fingerjoint trim boards by Russin are an ideal cost-effective alternative when a painted surface and long lengths are desired. Fortress Trim provides building contractors and homeowners with the warmth, beauty and natural decay resistance of real Western Red Cedar plus the built-in protection of a superior quality primer. One coat of primer in Cape Cod Gray is machine-applied at our state-of-the-art facility.

Fortress Trim is available in 16' lengths with a maximum of 10% trimbacks.

#### Clear Vertical Grain Fingerjoint (CVG)

- 1" x 4" S1S2E
- 1" x 6" S1S2E
- 1" x 8" S1S2E
- 1" x 10" S1S2E
- 1" x 12" S1S2E
- 5/4" x 4" S1S2E
- 5/4" x 6" S1S2E
- 5/4" x 8" S1S2E
- 5/4" x 10" S1S2E
- 5/4" x 12" S1S2E

**FORTRESS**  
TRIM BY RUSSIN



We're proud to be certified applicators of both Benjamin Moore and Sherwin Williams products. This means that they've visited our facilities and we've been trained in proper application of their products. Because of this status, we're able to offer finishes from these companies at a factory discounted rate.

# CUSTOM FACTORY FINISHING

## Add Value with Custom Manufacturing and Machine-Applied Coating Services from Russin!

### Coatings Expertly Applied On-Site at Russin Factory Finishing

Add warranty protection with machine applied coatings from Russin Factory Finishing. Coatings are applied under ideal conditions of temperature and humidity at our state-of-the-art machine-applied coatings facility. All work promptly completed on-site.

### Custom Architect-Specified Projects are Easy with Our On-Site Weinig Moulder

Need a custom pattern in Western Red Cedar? No problem, Russin has the answer. Produced by Weinig, one of the world's highest-quality lumber equipment manufacturers, our moulder was installed recently in our Montgomery, NY facility.

### From Narrow to Wide and Thick to Thin...You Specify It and We Can Do It!

Custom profiles of siding and paneling... historical reproductions... virtually whatever you need in either small or large quantities can be accurately produced in an amazingly short period of time.



## Many Different Types of Coatings Are Available Depending Upon The Desired Effect. The Following Benjamin Moore and Cabot Machine-Applied Coatings Are Recommended for Western Red Cedar:



### Benjamin Moore® Premium Translucent 326

- VOC compliant formula dries faster
- Tung oil resin penetrates deep in both hard and soft woods
- Offers a larger color selection



### Benjamin Moore® Premium Alkyd Semi Transparent Deck & Siding Stain 328

- VOC compliant formula dries to a hard, matte finish within 24-48 hours
- A larger color selection that dries faster



### Benjamin Moore® Arborcoat Exterior Stain - Solid 6401

- Suitable for use on all types of wood and composite siding
- Superior UV protection
- Resists blistering, peeling, stains and scuffs
- Excellent touch up and re-coat properties
- Mildew resistant



### Semi-Transparent Deck and Siding Stain

- Lightly pigmented to accentuate wood grain
- Water-repellent and UV protection
- One-coat application



### Australian Timber Oil

- Ideal for decking & siding
- Available in five colors
- Three-way oil protection for superior penetration



### Wood Toned Deck and Siding Stain

- Translucent oil finish that protects and beautifies woods natural appearance
- Available in five colors
- Water repellent; deep penetrating

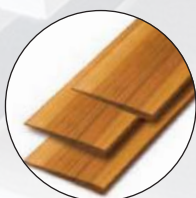


Illustrated below are different coating effects all shown on the same Western Red Cedar bevel siding substrate.

Raw Cedar



Clear Sealer



Toned Sealer



Semi-trans. Stain



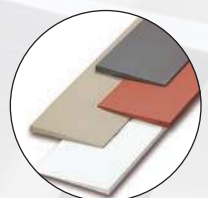
Solid Stain



Primer



Paint







TruDefinition®  
**DURATION®**

Shingles with Patented SureNail® Technology

Tejas con tecnología patentada SureNail®



Driftwood®







## TOTAL PROTECTION SIMPLIFIED®

It takes more than just shingles to protect a home. It takes an integrated system of components and layers designed to perform in three critical areas. The Owens Corning® Total Protection Roofing System® gives you the assurance that all of your Owens Corning roofing components are working together to help increase the performance of your roof.

## PROTECCIÓN TOTAL SIMPLIFICADA®

Se necesita más que simplemente tejas para proteger su vivienda. Se necesita un sistema integral de componentes y capas diseñadas para desempeñarse en tres áreas críticas. El Total Protection Roofing System® de Owens Corning® le garantiza que todos sus componentes para cubiertas de Owens Corning funcionan en conjunto para mejorar el desempeño de su techo.

### SEAL. SELLAR.

#### Helps create a waterproof barrier

Ayuda a crear una barrera impermeable

### DEFEND. DEFENDER.

#### Helps protect against nature's elements

Protege contra los elementos climáticos

### BREATHE. RESPIRAR.

#### For balanced attic ventilation

Para una ventilación equilibrada del ático

**Hip & Ridge shingles**  
Tejas de limatesa y cumbrera

**Laminate shingles**  
Tejas laminadas

**Starter shingles**  
Tejas de arranque

**Exhaust vents**  
Salidas de aire

**Intake vents**  
Entradas de aire

**Self-adhered ice & water barrier**  
Barrera autoadhesiva contra el hielo y el agua

**Synthetic underlayment**  
Membrana impermeabilizante sintética

### + COMFORT. CONFORT.

**Add comfort and energy performance**  
Más confort y desempeño energético

**PINK® Fiberglas™ blown-in attic insulation**  
Aislamiento para áticos PINK® Fiberglas™ aplicado por impulsión

## REGISTER YOUR WARRANTY

Registering your Owens Corning® warranty ensures it's easily referenced should you ever need to access it. The process is easy—just have your installation date, shingle type, shingle color and number of squares ready. Then go online to [www.owenscorning.com/roofingstandardwarranty](http://www.owenscorning.com/roofingstandardwarranty) or call 1-800-ROOFING (1-800-766-3464) to finish the process.



### SCAN TO REGISTER YOUR WARRANTY

Escanee para registrar su garantía

## REGISTRE SU GARANTÍA

Al registrar su garantía de Owens Corning® la podrá consultar rápidamente si fuera necesario acceder a ella. El proceso es simple: tenga a mano la fecha de instalación, el tipo y color de tejas y la cantidad de cuadrados. Luego, visite [www.owenscorning.com/roofingstandardwarranty](http://www.owenscorning.com/roofingstandardwarranty) o llame al 1-800-ROOFING (1-800-766-3464) para completar el proceso.





# DEEP DIMENSION OUTSTANDING PERFORMANCE

## Duration® Shingles offer:

- The high-performance of SureNail® Technology
- A TruDefinition® Color Platform
- A Limited Lifetime Warranty\*<sup>1</sup> for as long as you own your home
- The protection of a 130-MPH\* wind warranty
- StreakGuard® Protection with a 25-year Algae Resistance Limited Warranty<sup>3/8</sup>
- Rated Class 3 for Impact Resistance<sup>6</sup> and may qualify for a homeowner insurance discount<sup>7</sup>

## UNA NUEVA DIMENSIÓN DESEMPEÑO SOBRESALIENTE

### Las tejas Duration® ofrecen:

- El gran desempeño de la tecnología SureNail®
- La gama de colores TruDefinition®
- Una garantía limitada de por vida\*<sup>1</sup> mientras sea propietario de la vivienda
- La protección de una garantía contra vientos de hasta 210 km/h (130 mph)\*
- Protección StreakGuard® con una garantía limitada de 25 años de resistencia a las algas <sup>3/8</sup>
- Clasificación nominal 3 para resistencia a los impactos<sup>6</sup> y puede ser aplicable a descuento por seguro del propietario<sup>7</sup>



### Don't let black streaks lower the value or curb appeal of your home.

Owens Corning blends specialized copper-lined granules, developed by 3M, a leading producer of roofing granules, into our colorful shingles. This helps resist blue-green algae growth.

### No deje que las manchas de algas afecten al valor o aspecto de su vivienda.

En sus coloridas tejas, Owens Corning añade gránulos especiales con recubrimiento de cobre, desarrollados por 3M, un productor líder de gránulos para techos. Esto ayuda a prevenir la proliferación de algas azul-verdosas.



### THE FINISHING TOUCH

## OWENS CORNING® HIP & RIDGE SHINGLES

Owens Corning® Hip & Ridge Shingles are uniquely color matched to TruDefinition® Duration® Shingles. The multiple color blends are only available from Owens Corning Roofing and offer a finished look for the roof.

### EL TOQUE FINAL

## TEJAS DE LIMATESA Y CUMBRERA DE OWENS CORNING®

Las tejas de limatesa y cumbrera de Owens Corning® se ofrecen en una exclusiva gama de colores para combinar con las tejas Duration® TruDefinition®. Esta gran variedad de combinaciones de colores es una exclusividad de Owens Corning Roofing para lograr techos con un acabado único.

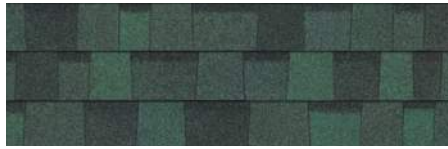


TruDefinition®  
**DURATION®**

Shingles with Patented SureNail® Technology | Tejas con tecnología patentada SureNail®



**Brownwood<sup>1</sup>**



**Chateau Green<sup>1</sup>**



**Colonial Slate<sup>1</sup>**



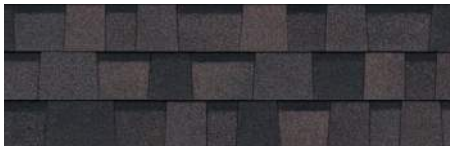
**Desert Rose<sup>1</sup>**



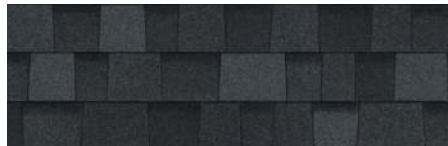
**Driftwood<sup>1</sup>**



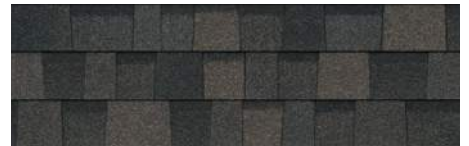
**Estate Gray<sup>1</sup>**



**Midnight Plum<sup>1/5</sup>**



**Onyx Black<sup>1</sup>**



**Peppercorn<sup>1</sup>**



**Sand Castle<sup>1</sup>**



**Sierra Gray<sup>1</sup>**



**Slatestone Gray<sup>1</sup>**



**Teak<sup>1</sup>**



**Terra Cotta<sup>1</sup>**



**Williamsburg Gray<sup>1</sup>**

## COLOR DISCLAIMER

As color experts, we know getting the shingle color right is a big part of any roofing purchase. Due to printing color variations, in addition to viewing shingle literature, we suggest you request an actual shingle sample to see how it will appear on your home and with your home's exterior elements in various natural lighting conditions. Lastly, we recommend you verify your color choice by seeing it installed on an actual home; your roofing contractor or supplier can provide a sample and may be able to direct you to a local installation.

## DESCARGO DE RESPONSABILIDAD SOBRE LOS COLORES

En tanto que especialistas en color, sabemos que obtener el color de teja perfecto es una parte importante en toda compra de techos. Debido a las variaciones en los colores impresos, además de mirar folletos de tejas, le sugerimos que solicite una muestra de la teja para ver como se verá en su hogar y con los elementos externos de la vivienda bajo distintas condiciones de luz natural. Finalmente, le recomendamos que para verificar su elección de colores, vea cómo lucen las tejas ya instaladas en una vivienda; su contratista de techos o su proveedor le pueden dar una muestra e incluso indicarle dónde ver un techo ya instalado.



# THERE'S A LINE BETWEEN A GOOD SHINGLE AND A GREAT SHINGLE.®

It's the nailing line on your shingles. The difference between a good shingle and a great shingle is having Patented SureNail® Technology, only from Owens Corning.

## HAY UNA GRAN DIFERENCIA ENTRE UNA BUENA TEJA Y UNA TEJA EXCELENTE™

Es la línea de clavado en su tejas. La diferencia entre una buena teja y una teja excelente es la tecnología patentada SureNail®, una exclusividad de Owens Corning.



### Excellent Adhesive Power

Helps keep the shingle layers laminated.

### Excelente poder adhesivo

Ayuda a conservar el laminado de las capas de las tejas.

### Outstanding Grip

The SureNail® strip enhances the already amazing grip of our proprietary Tru-Bond®\*\* sealant for exceptional wind resistance of a 130-MPH wind warranty.

### Agarre excepcional

La banda SureNail® mejora el excelente agarre de nuestro sellador patentado Tru-Bond®\*\* con una garantía de resistencia al viento excepcional de 120 km/h (130 mph).

### Breakthrough Design

Patented SureNail® Technology is the first and only reinforced nailing zone on the face of the shingle.

### Diseño innovador

La tecnología patentada SureNail® es la primera y la única que provee un área de clavado reforzada en la cara de la teja.

### "No Guess" Wide Nailing Zone

This tough, engineered woven-fabric strip is embedded in the shingle to create an easy-to-see, strong, durable fastener zone.

### Área de clavado ancha, sin cálculos "a ojo"

Esta banda resistente de tela mecánica tejida está incrustada en la teja para proveer un área de sujeción resistente, duradera y fácil de detectar.

### Triple Layer Protection®

A unique "triple layer" of reinforcement occurs when the fabric overlays the two shingle layers, providing increased protection against "nail pull" from the wind.

### Triple Layer Protection®

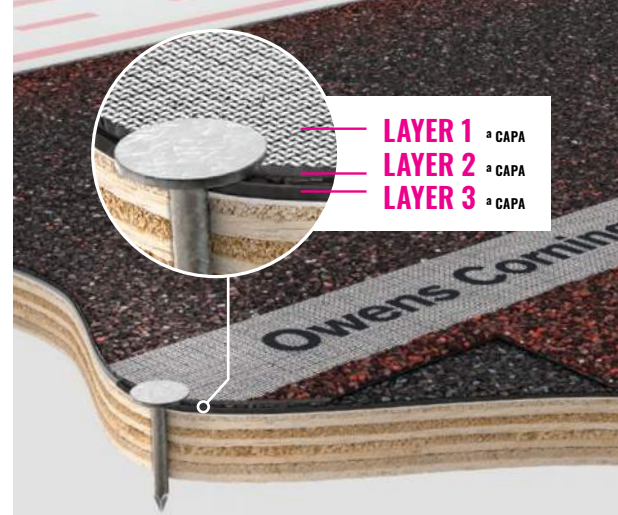
Cuando la tela cubre las dos capas de la teja, se forma una "triple capa" de refuerzo excepcional que ofrece una mayor protección ante el "arranque de clavos" debido al viento.

### Double the Common Bond

SureNail® features up to a 200% wider bond between the shingle layers in the nailing zone over standard shingles.

### Duplica la adherencia común

En comparación con las tejas comunes, SureNail® ofrece un área de unión hasta un 200 % más ancha entre las capas de la teja en el área de clavado.



## THE PROOF IS IN THE PERFORMANCE LA PRUEBA ESTÁ EN EL DESEMPEÑO



Up to

**2.5X**  
**BETTER**  
NAIL PULL-THROUGH RESISTANCE

Hasta

**2.5X**  
**MEJOR**  
RESISTENCIA A LA TRACCIÓN DE LOS CLAVOS



Up to

**9X**  
**BETTER**  
NAIL BLOW-THROUGH RESISTANCE

Hasta

**9X**  
**MEJOR**  
RESISTENCIA AL DESPRENDIMIENTO DE LOS CLAVOS



Up to

**2X**  
**BETTER**  
DELAMINATION RESISTANCE

Hasta

**2X**  
**MEJOR**  
RESISTENCIA A LA DELAMINACIÓN



Product Attributes

|  |
|--|
| Warranty Length*†                                      |
| Limited Lifetime<br>(for as long as you own your home) |
| Wind Resistance Limited Warranty*                      |
| 130-MPH  |
| Algae Resistance Limited Warranty*§                    |
| 25 Years   |
| TRU PROtection® Non-Prorated Limited Warranty* Period  |
| 10 Years   |



TruDefinition® Duration® Shingles  
Product Specifications

|                                     |                  |
|-------------------------------------|------------------|
| Size                                | 13¼" x 39¾"      |
| Application Exposure                | 5%"              |
| Shingles per Bundle                 | Not less than 20 |
| Average Shingle Count per 3 Bundles | 64               |
| Average Coverage per 3 Bundles      | 98.4 sq. ft.     |

Applicable Standards and Codes

|  |
|--|
| ASTM D3462                                 |
| ASTM D228                                  |
| ASTM D3018 (Type 1)                        |
| ICC-ES AC438#                              |
| ASTM D3161 (Class F Wind Resistance)       |
| ASTM D7158 (Class H Wind Resistance)       |
| ASTM E108/UL 790 (Class A Fire Resistance) |
| UL 2218 (Class 3 Impact Resistance)⁵       |
| FM 4473 (Class 3 Impact Resistance)⁶       |
| PRI ER 1378E01                             |
| Florida Product Approval                   |
| Miami-Dade County Product Approval²        |

Características del producto

|  |
|--|
| Período de garantía*†  |
| Garantía limitada de por vida<br>(mientras sea propietario de la vivienda) |
| Garantía limitada de resistencia al viento*                                |
| 210 km/h (130 mph)   |
| Garantía limitada de resistencia a las algas*§                             |
| 25 años  |
| Período no prorrateado de garantía limitada TRU PROtection®                |
| 10 años  |



Especificaciones de las tejas Duration®  
TruDefinition®

|   |                                 |
|---|---------------------------------|
| Tamaño                                    | 33.65 x 100 cm (13¼ x 39¾ pulg) |
| Exposición de aplicación                  | 14.3 cm (5% pulg)               |
| Tejas por paquete                         | 20 como mínimo                  |
| Cantidad promedio de tejas por 3 paquetes | 64                              |
| Cobertura promedio por 3 paquetes         | 9.14 m² (98.4 pies²)            |

Normas y códigos pertinentes

|   |
|---|
| ASTM D3462                                      |
| ASTM D228                                       |
| ASTM D3018 (Tipo 1)                             |
| ICC-ES AC438#                                   |
| ASTM D3161 (Resistencia al viento, Clase F)     |
| ASTM D7158 (Resistencia al viento Clase H)      |
| ASTM E108/UL 790 (Resistencia al fuego Clase A) |
| UL 2218 (Resistencia a impactos de clase 3)⁶    |
| FM 4473 (Resistencia a impactos de clase 3)⁶    |
| PRI ER 1378E01                                  |
| Aprobación del producto en el estado de Florida |
| Producto aprobado por el condado de Miami-Dade² |

\* See actual warranty for complete details, limitations and requirements.

† 40-Year Limited Warranty on commercial projects.

† Owens Corning testing against competing products with wide, single-layer nailing zones when following manufacturers' installation instructions and nailing in the middle of the allowable nailing zone.

\*\* Tru-Bond® is a proprietary premium weathering-grade asphalt sealant that is blended by Owens Corning Roofing® and Asphalt, LLC.

+ The amount of Triple Layer Protection® may vary on shingle-to-shingle basis.

# International Code Council Evaluation Services Acceptance Criteria for Alternative Asphalt Shingles.

^ Excludes non-Owens Corning® roofing products such as flashing, fasteners, pipe boots and wood decking.

1 See Color Disclaimer information on page 3 for additional details.

2 Applies to all areas that recognize Miami-Dade Notice of Acceptance (NOA).

3 Shingles are algae resistant to control the growth of algae and discoloration.

§ Installation must include use of an Owens Corning® Hip & Ridge product. See actual warranty for details.

5 Owens Corning® Bourbon and Midnight Plum shingles include a patent pending design.

6 Qualifying Owens Corning Hip & Ridge Shingles may be required to complete a UL 2218 and/or FM 4473 Class 3 Impact-Resistant Roof System. Due to the variability in real storm conditions, a Class Rating on any product does not guarantee that it will withstand damage from hailstorms or other acts of God. Owens Corning shingles are not covered under a warranty for hail damage.

7 Homeowners should check with their insurance company to see if they qualify.

SureNail® Technology is not a guarantee of performance in all weather conditions.

For patent information, please visit [owenscorning.com/patents](https://www.owenscorning.com/patents).

\* Consulte la garantía para obtener una lista completa de detalles, limitaciones y requisitos.

† Garantía limitada de 40 años para proyectos comerciales.

† Ensayos comparativos de Owens Corning con productos de la competencia con zonas de clavado ancho de una sola capa cuando se siguen las instrucciones de instalación del fabricante y se clava en el medio de la zona de clavado permitida.

\*\* Tru-Bond® es un sellador asfáltico patentado de calidad premium formulado por Owens Corning Roofing® and Asphalt, LLC.

+ La cantidad de Triple Layer Protection® puede variar entre una teja y otra.

# Criterios de aceptación de los servicios de evaluación del Consejo Internacional de Códigos para tejas asfálticas alternativas.

^ Se excluyen productos para techos no fabricados por Owens Corning®, como tapajuntas, sujetadores, bases de tubos y estructuras de soporte de madera.

1 Para obtener más información, consulte el Descargo de responsabilidad sobre los colores, en la página 3.

2 Aplicable a todas las zonas que reconocen el Aviso de aceptación (NOA, Notice of Acceptance) del condado de Miami Dade.

3 Las tejas son resistentes a las algas para controlar su desarrollo y la decoloración.

§ La instalación debe incluir el uso de un producto para limatesa y cumbre de Owens Corning®.


5 Las tejas de Owens Corning® Bourbon y Midnight Plum incluye un diseño con patente pendiente.

6 Es posible que se requiera el uso de tejas aptas para limatesa y cumbre de Owens Corning para completar un sistema de techo resistente a impactos UL 2218 y/o FM 4473 Clase 3. Debido a la variación de las condiciones de tormenta real, una calificación de clase en cualquier producto no garantiza que soportará daños por tormentas de granizo u otros casos fortuitos. Las tejas de Owens Corning no están cubiertas por una garantía por daños de granizo.

7 Los propietarios deben verificar con su aseguradora para saber si califican.

La tecnología SureNail® no es una garantía de desempeño en todos los tipos de condiciones climáticas.

Para información sobre la patente, visite [www.owenscorning.com/patents](https://www.owenscorning.com/patents).



OWENS CORNING ROOFING AND ASPHALT, LLC  
ONE OWENS CORNING PARKWAY  
TOLEDO, OHIO, USA 43659

1-800-GET-PINK® | 1-800-438-7465  
[www.owenscorning.com](https://www.owenscorning.com)

Pub. No. 10024200-A. Printed in U.S.A. February 2024.  
THE PINK PANTHER™ & © 1964–2024 Metro-Goldwyn-Mayer Studios Inc.  
All Rights Reserved. The color PINK is a registered trademark of Owens Corning.  
© 2024 Owens Corning. All Rights Reserved.

(Brookville, Medina, Minneapolis, Summit)

Pub. N.º 10024200-A. Impreso en EE.UU. Febrero de 2024.  
THE PINK PANTHER™ y © 1964–2024 Metro-Goldwyn-Mayer Studios Inc.  
Todos los derechos reservados. El color PINK es una marca registrada de Owens Corning. © 2024 Owens Corning. Todos los derechos reservados.



# Pella® Reserve™

## Traditional Wood & Clad/Wood



Exquisitely designed windows and doors with unparalleled historical detailing.

Double-Hung Interior



Double-Hung Exterior



- **Easy-to-learn Pella Steady Set™ interior installation system**

Pella Steady Set Interior Installation System is a revolutionary, award-winning and safer way to install new construction windows.<sup>1</sup> The simple system is the fastest, most labor efficient wood window installation system with uncompromising quality.<sup>2</sup> Available on select windows.

- **Historical Details**

Our most historically authentic line of wood windows and patio doors. Featuring through-stile construction, deliberate proportions and intricate profiles. Pella Reserve – Traditional products are the ideal choice for historical renovations and traditional building projects.

- **Authentic hardware**

Complement your project with historically authentic spoon-lock window hardware. Our Antiek casement window hardware is inspired by period furniture to deliver authentic traditional style.

- **Architectural interest**

Pella's Integral Light Technology® grille helps capture the look of true-divided-light without sacrificing energy performance. Further your aesthetic with the putty profile, recreated with historically accurate angles to provide meaningful depth and a realistic shadow. Pella Reserve products offer the industry's deepest sash dimension.

- **Virtually unlimited customization**

If you can dream it, we can build it with our most customizable product line. From extra tall to extra wide, Pella can craft unique windows that complement your aesthetic. Custom sizes, grille patterns and designs, finishes, wood types and glass options are available.

- **Tailor-made solutions**

From preliminary drawings to installation, Pella's expert team of architects, engineers, drafters and consultants can work to deliver custom window and door solutions for your project. Partner with Pella to achieve your unique vision without concessions.

- **Intentional innovation**

The award-winning Integrated Rolscreen® retractable screen preserves aesthetics and the view. It is a double- and single-hung screen that appears when you open the window and rolls away, out of sight, when you close it.

- **Durable interiors and extruded aluminum exteriors**

To help save you time on the jobsite, interior finish options are available in a variety of paints and stains, or primed and ready-to-paint. To complement your exterior aesthetic, choose from our carefully curated color palette or define your own custom color for your project.

- **ENERGY STAR® certified<sup>3</sup>**

Pella wood products offer energy-efficient options that will meet or exceed ENERGY STAR guidelines in all 50 states.

- **Testing beyond requirements**

All wood products and testing are not created equal. Pella raises the bar on industry standard testing and beyond to deliver long-lasting products and reduced callbacks. Every Pella wood window and door passes 5, on average, quality checks before it arrives on the jobsite.

- **Best limited lifetime warranty<sup>4</sup>**

Pella Reserve products are covered by the best limited lifetime warranty in the business for wood windows and patio doors.<sup>4</sup>

Available in these window and patio door styles:



Special shape windows also available.

<sup>1,2,3,4</sup> See back cover for disclosures.



Product Specifications

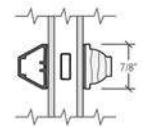
| Window & Patio Door Styles           | Min. Width | Min. Height | Max. Width | Max. Height | Performance Class & Grade | Performance Values |             |       | Frame / Install  |
|--------------------------------------|------------|-------------|------------|-------------|---------------------------|--------------------|-------------|-------|--|
|                                      |            |             |            |             |                           | U-Factor           | SHGC        | STC   |  |
| Awning                               | 13-¾"      | 13-¾"       | 59"        | 59"         | LC30 – CW50               | 0.25-0.29          | 0.18-0.47   | 27-35 | Pella Steady Set <sup>3</sup> ; Fold-out Fin, Block Frame, EnduraClad Exterior Trim / Brickmould |
| Casement                             | 13-¾"      | 13-¾"       | 47"        | 108"        | R35-CW50                  | 0.25-0.29          | 0.18-0.47   | 27-34 |  |
| Fixed Casement                       | 10"        | 10"         | 144"       | 144"        | R35-CW50                  | 0.25-0.29          | 0.18-0.47   | 27-35 |  |
| Double-Hung                          | 14"        | 24-3⁄8"     | 48"        | 96"         | CW30-CW50                 | 0.25-0.30          | 0.19-0.53   | 28-35 |  |
| Precision Fit Double-Hung            | 13-½"      | 23-¾"       | 48"        | 84"         | CW40-CW50                 | 0.25-0.31          | 0.19-0.53   | 26-30 | Pocket Replacement   |
| Monumental Hung                      | 13-¾"      | 24"         | 72"        | 144"        | LC25-CW50                 | 0.25-0.30          | 0.17-0.47   | 29-34 | Fold-out Fin, Block Frame, EnduraClad Exterior Trim / Brickmould                                 |
| In-Swing Hinged Patio Door (Single)  | 18"        | 36"         | 48"        | 119-½"      | LC40-LC55                 | 0.25-0.29          | 0.14-0.40   | 31-35 |  |
| In-Swing Hinged Patio Door (Double)  | 36"        | 36"         | 96"        | 119-½"      | LC40-LC55                 | 0.25-0.29          | 0.14-0.40   | 31-35 |  |
| Out-Swing Hinged Patio Door (Single) | 18"        | 36"         | 48"        | 119-½"      | R50-LC70                  | 0.25-0.30          | 0.14-0.39   | 30-36 |  |
| Out-Swing Hinged Patio Door (Double) | 36"        | 36"         | 96"        | 119-½"      | R50-LC70                  | 0.25-0.30          | 0.14-0.39   | 30-36 |  |
| Sliding Patio Door (OX, XO)          | 60"        | 74"         | 120"       | 120"        | R20-LC50                  | —                  | —           | —     |  |
| Sliding Patio Door (OXO)             | 90"        | 74"         | 180"       | 120"        | R20-LC35                  | —                  | —           | —     | For more info visit PellaADM.com   |
| Sliding Patio Door (OXXO)            | 117"       | 74"         | 237"       | 120"        | R20-LC35                  | —                  | —           | —     |  |
| Multi-Slide Patio Door               | 40-¼"      | 50-½"       | 701-⅝"     | 119-½"      | R15-LC25 <sup>3</sup>     | 0.30 – 0.36        | 0.15 – 0.46 | 31    |  |
| Bifold Patio Door                    | 31-¾"      | 55-½"       | 312"       | 119-½"      | R15-LC25 <sup>3</sup>     | 0.26-0.44          | 0.13-0.45   | —     |  |

Window sizes available in 1/8" increments  
Special sizes available. For more information regarding performance, visit [pella.com/performance](https://pella.com/performance). For more information regarding frame and installation types, visit [PellaADM.com](https://PellaADM.com).

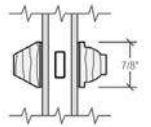
Grilles

Integral Light Technology<sup>®</sup>

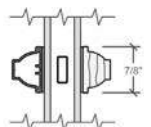
Choose the look of true divided light without sacrificing energy performance.



Putty Glaze Exterior with Ogee Interior<sup>6</sup>  
7/8", 1-1/4" or 2"



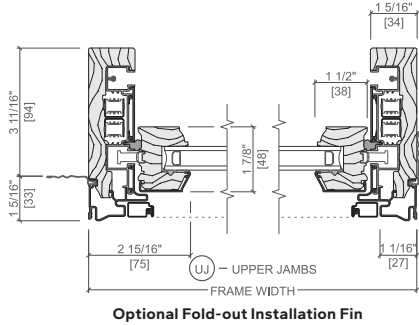
Putty Glaze Exterior with Ogee Interior<sup>6</sup>  
7/8", 1-1/4" or 2"



Ogee Exterior with Ogee Interior<sup>6</sup>  
7/8", 1-1/4" or 2"

Cross Sections

Cross Sections



The double-hung cross sections provide visual reference to the historic putty exterior profile and traditional, beveled Ogee interior that add architectural interest to your project.

<sup>3,4</sup> See back cover for disclosures.

Window Hardware

Classic Collection

Get a timeless look with authentic styles in classic finishes.



Fold-away Crank  
Antiek



Spoon-Style Lock

Finishes:



Champagne



White



Brown



Matte Black



Oil-Rubbed Bronze



Satin Nickel



Satin Brass

Rustic Collection

Create a distinct and charming look with distressed finishes.

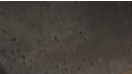


Fold-away Crank  
Antiek



Spoon-Style Lock

Finishes:



Distressed Bronze



Distressed Nickel

Essential Collection

Select from popular designs and finishes to suit every style.



Fold-away Crank



Cam-Action Lock

Finishes:



Champagne



White



Brown



Matte Black



Oil-Rubbed Bronze



Satin Nickel



Satin Brass

Patio Door Hardware

Classic Collection

Choose timeless pieces, created in collaboration with Baldwin<sup>®</sup> Hardware, for a look that will never go out of style.

BALDWIN<sup>®</sup>



Hinged & Bifold Patio Door Handle  
Virago



Sliding & Multi-Slide Patio Door Handle  
Ambrose



Multi-Slide Patio Door Handle<sup>5,6</sup>

Finishes:



Matte Black



Oil-Rubbed Bronze



Satin Nickel



Satin Brass

Essential Collection

Elevate your style and transform a home with elegant selections.



Hinged & Bifold Patio Door Handle  
Standard



Sliding Patio Door Handle  
Standard

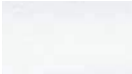


Multi-Slide Patio Door Handle<sup>5,6</sup>

Finishes:



Champagne



White



Brown



Matte Black



Oil-Rubbed Bronze



Satin Nickel



Satin Brass

Additional hardware collections available. Visit [PellaADM.com](https://PellaADM.com) for more information.

<sup>5,6</sup> See back cover for disclosures.



Colors

Wood Types

Choose the wood species that best complements your project's interior.

Custom solutions:



Pine



Douglas Fir



Mahogany



White Oak



Red Oak



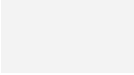
Cherry



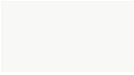
Maple

Prefinished Pine Interior Colors


Custom interior finishes, unfinished or primed and ready-to-paint are also available.




White




Bright White




Linen White




Natural Stain




Golden Oak Stain




Early American Stain




Provincial Stain



Dark Mahogany Stain



Charcoal Stain



Black Stain

Extruded Aluminum-Clad Exterior Colors

Our low-maintenance EnduraClad® exterior finish resists fading. Take durability one step further with EnduraClad Plus which also resists chalking and corrosion.<sup>7</sup>



Custom colors are also available.



Black



White



Brown



Fossil



Iron Ore



Portobello



Putty



Almond



Classic White



Brick Red



Hartford Green



Pearl Gray



Soft Linen



Satin Steel



Matte Gray



Wolf Gray



Spice Red



Sage



Frost Blue



Blue Ash

Screens

Rolscreen®

Rolscreen soft-closing retractable screens roll out of sight when not in use. Available on casement windows. .

Integrated Rolscreen®

A concealed retractable screen that moves seamlessly with the sash of a single- or double-hung window—appearing when you open the window and rolling out of sight when you close it.

TuffScreen® by Phifer®

The TuffScreen® is 2.5x stronger than a standard screen.<sup>8</sup> It is tear, puncture and damage resistant, standing up to pets, children and harsh weather. Available on sliding patio doors.

<sup>\*</sup>All trademarks are property of their respective owners

Flat

InView™ screens are clearer than conventional screens and come standard.



The Best Limited Lifetime Warranty in the Industry

We know your reputation matters and you stake your reputation on quality, dependable products. That's why we have the best limited lifetime warranty in the industry for wood windows and patio doors.<sup>2</sup>

<sup>1</sup> Some Pella products may not meet ENERGY STAR® guidelines in Canada. For more information, contact your local Pella sales representative or go to [energystar.gc.ca](http://energystar.gc.ca).

<sup>2</sup> Based on comparing written limited warranties of leading national wood window and wood patio door brands. See written limited warranty for details, including exceptions and limitations, at [pella.com/warranty](http://pella.com/warranty) or contact Pella Customer Service.

<sup>3</sup> Ratings are contingent on product configurations.

<sup>4</sup> Color-matched to your product's interior and exterior color.

<sup>5</sup> Flush multi-slide handle is a Pella exclusive design.

<sup>6</sup> Flush multi-slide handle is not available in Champagne.

<sup>7</sup> EnduraClad Plus protective finish is not available with all colors. See your local Pella sales representative for availability.

<sup>8</sup> Based on the composite results of a 5-panel strength analysis comparing TuffScreen and standard screening.

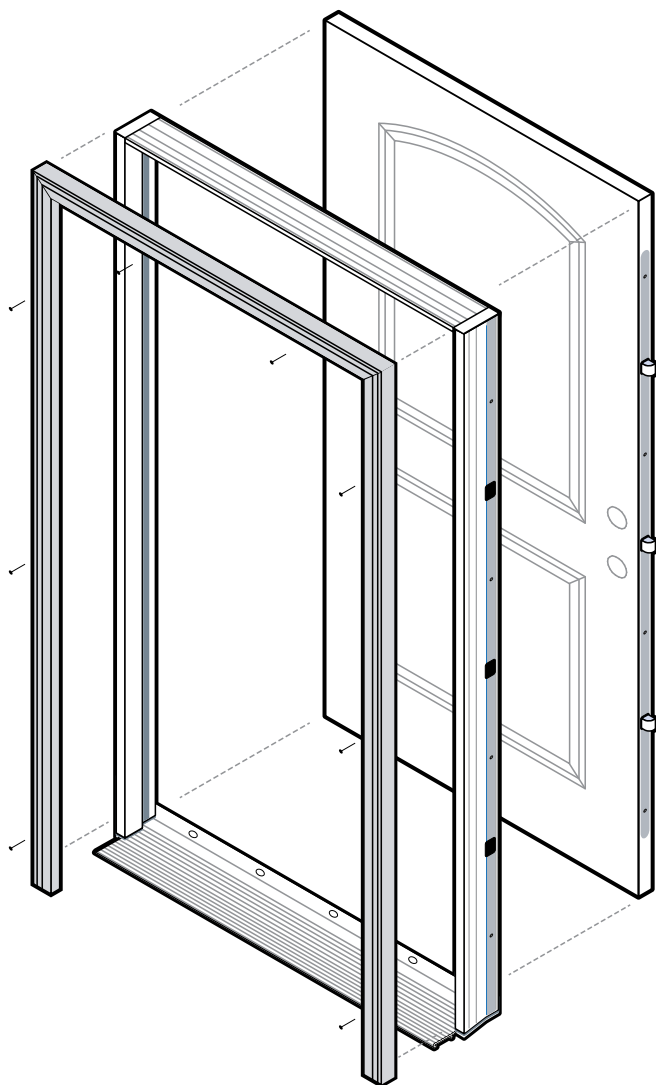


# Pella® Entry Doors



#1 preferred entry door brand by homeowners.\*

A curated collection of fiberglass and steel entry doors delivering dependable performance and inspired designs.



Rendering shown with all available options.

- **Whole home solution**

Trust Pella to be your whole project solution with our complete offering of windows, patio doors and entry doors. Support is available where and when you need it with trusted national, regional and local partners in sales and installation.

- **Innovative security sensors**

Our integrated security sensors are factory-installed and integrated directly into the entry door system. Preserving the beauty and warranty of a Pella entry door while increasing peace of mind, they can be used with the free Pella Insynctive® app and integrate with many home security systems.

- **Premium hardware**

Pella has partnered with Baldwin®, the #1 premium hardware brand to create three stunning collections to complement your project's style, architecture and coordinating window hardware.

- **Variety of panel materials**

Available in fiberglass and steel, our collection of entry doors can meet the needs of your design vision, while providing exceptional performance and energy efficiency.

- **Rot-resistant frame system**

Pella's complete panel and frame system for fiberglass and steel entry doors is made of a rigid closed cell poly-fiber material and is engineered to be exceptionally energy efficient. It does not absorb moisture and is rot resistant, reducing potential callbacks.

- **Energy-efficient panels**

Our fiberglass and steel entry doors feature solid polyurethane foam-filled panels to increase energy efficiency and ensure years of exceptional performance.

- **Desired, on-trend colors**

Select from a curated color collection, created in collaboration with the team at Sherwin-Williams DesignHouse for Performance Coatings. They are designed to complement Pella windows and patio doors and coordinate with other exterior finishes, including siding, roofing, stone and shingles.

- **Most popular styles**

With the most popular panel styles, we've made the selection process for your next project faster and easier. With a panel offering that fits every home style, you can help fulfill your customer's desired aesthetic.

- **Available impact options**

Offering panel and glass options for impact-certification, Pella's fiberglass and steel panels and frame system allow for code compliance. See performance details at [PellaADM.com](http://PellaADM.com) for more information.



Pella® entry doors are backed by some of the strongest warranties in the business.<sup>2</sup>

Pella entry door fiberglass systems with composite exterior frames are backed by the Pella Limited Lifetime Warranty. The Pella 20/10 Limited Warranty is the standard warranty for all steel and wood entry doors from Pella.

\* Study of homeowner perceptions of leading national brands. Study commissioned by Pella, 2019.




Product Specifications


| Entry Door Styles        | Min. Width | Min. Height | Max. Width¹ | Max. Height | Performance Values¹ |      |
|--------------------------|------------|-------------|-------------|-------------|---------------------|------|
|                          |            |             |             |             | U-Factor            | SHGC |
| Flush Glazed Full Light² | 30"        | 80"         | 36"         | 96"         | 0.25                | 0.16 |
| Full Light²              | 30"        | 80"         | 36"         | 96"         | 0.25                | 0.16 |
| 3/4 Light²               | 32"        | 80"         | 36"         | 96"         | 0.25                | 0.21 |
| 3/4 Deluxe Oval Light²   | 32"        | 80"         | 36"         | 80"         | 0.24                | 0.15 |
| 1/2 Light 1 Panel Plank  | 32"        | 80"         | 36"         | 96"         | 0.23                | 0.16 |
| Craftsman Light²         | 32"        | 80"         | 36"         | 96"         | 0.19                | 0.09 |
| Twin Colonial Light      | 32"        | 80"         | 36"         | 80"         | 0.19                | 0.09 |
| 2 Panel Square           | 32"        | 80"         | 36"         | 96"         | 0.15                | 0.01 |
| 2 Panel Arch Plank       | 32"        | 80"         | 36"         | 96"         | 0.15                | 0.01 |
| Craftsman²               | 32"        | 80"         | 36"         | 96"         | 0.15                | 0.01 |
| 6 Panel²                 | 30"        | 80"         | 36"         | 96"         | 0.15                | 0.01 |
| Flush                    | 30"        | 80"         | 36"         | 96"         | 0.15                | 0.01 |

Panel Styles


Solid




2 Panel Square




2 Panel Arch Plank



Craftsman²



6 Panel²



Flush

Glazed



Craftsman Light²



1/2 Light 2 Panel²



1/2 Light 1 Panel²



1/2 Light 1 Panel Plank



3/4 Oval Light²



3/4 Deluxe Oval Light²



3/4 Light²



Full Light²



3 Light Equal



4 Light Equal



Twin Colonial Light



Fan Light




Fan Light Rectangle




1 Light Flush


Flush Glazed



Flushed Glazed 1/2 Light²



Flushed Glazed 3/4 Light²



Flushed Glazed Full Light



Flushed Glazed Craftsman

¹ Values shown are for a single door. See your Pella representative for more information.  
² Availability may be limited. Please contact your local Pella representative for more information.  
³ See written limited warranties for complete details, including exceptions and limitations, at [pella.com/warranty](https://pella.com/warranty) or contact Pella Customer Service at 877-473-5527.

Colors

**Finishes** Find the color that coordinates best with your project, from modern to traditional styles, across the country. Our curated collection of on-trend colors was created in collaboration with the team at Sherwin-Williams DesignHouse for Performance Coatings.

Prefinished Stains



Golden Oak



Early American



Provincial



Red Mahogany



Dark Mahogany



Charcoal

Painted Fiberglass or Steel



White



Classic White



Pearl Gray



Soft Linen



Wolf Gray



Almond



Putty



Fossil



Portobello



Brown



Brick Red



Spice Red



Sage



Pine Green



Frost Blue



Blue Ash


Glass

Glass

Low-E insulating glass is available on a broad range of glazed entry doors. It provides thermal protection for exceptional energy efficiency, insulating from both heat and cold — making it a great choice for all climates. Decorative and impact-resistant glass options are available.

Low-E Glass


Energy-saving Low-E insulating glass is a simple, elegant option that helps protect flooring and furniture from fade damage.




Low-E Glass

Low-E Obscure Glass


An elegant way to add privacy, Pella's obscure glass patterns provide unique design simplicity.




Chord




Double Water



Pear



Satin Etch



Narrow Reed

Added Peace of Mind

**Integrated Security Sensors** Integrated wireless security sensors maintain aesthetics, streamline security installation and ensure no warranty loss is caused by post-installation drilling. Sensors can be monitored via the free Pella Insynctive® mobile app and are compatible with major security panel systems.\* For more information, go to [connectpella.com](https://connectpella.com).

\* Requires the Pella Insynctive App on a smart device, an Insynctive Bridge and a wireless home internet router with internet connection.



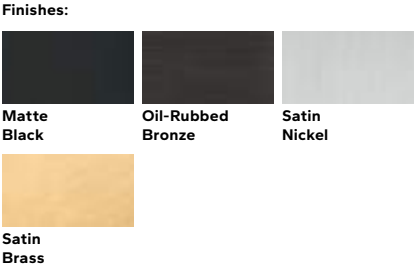
Entry Door Hardware

Entry Door Hardware

Pella offers four stunning collections to complement your project's style, architecture and coordinating window hardware. Classic, modern and rustic collections created in partnership with Baldwin® the #1 premium hardware brand.

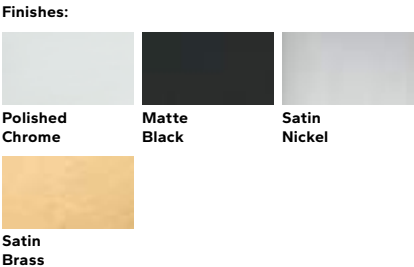
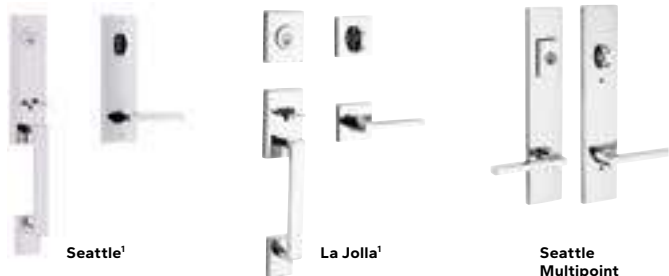
Classic Hardware Collection  
BALDWIN

Choose timeless pieces from the Classic Collection for a look that will never go out of style.



Modern Hardware Collection  
BALDWIN

Achieve the ultimate contemporary look with the sleek finishes of Modern hardware.



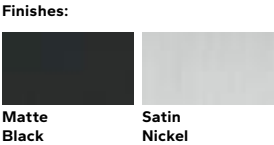
Rustic Hardware Collection  
BALDWIN

Stand out with bold looks from the Rustic Collection, and create an utterly unique aesthetic.



Essential Hardware Collection

Elevate your style and transform your home with an elegant selection of Essential hardware.



<sup>1</sup> Availability by product style and line may vary. See your local Pella sales representative for details.  
<sup>2</sup> Available Summer 2023