

# EXHIBIT A

NORTHEAST OHIO REGIONAL SEWER DISTRICT  
RESOLUTION NO. 54-13

-----  
Authorizing the Executive Director to enter into Stormwater Management Program Service Agreements with Member Communities for implementation of the Regional Stormwater Management Program.  
-----

WHEREAS, the Northeast Ohio Regional Sewer District has developed a Stormwater Management Program Service Agreement for the purpose of detailing services and responsibilities of the District and Member Communities under the Regional Stormwater Management Program; and

WHEREAS, the District is seeking authority to distribute the Stormwater Management Program Service Agreement to Member Communities and to enter into a Stormwater Management Program Service Agreement with each Member Community to memorialize the rights and responsibilities of the District and the Member Community regarding the performance of the stormwater projects under the Regional Stormwater Management Program;

NOW, THEREFORE, BE IT RESOLVED BY THE BOARD OF TRUSTEES OF THE NORTHEAST OHIO REGIONAL SEWER DISTRICT:

Section 1. That this Board finds that for the reasons stated in the preamble hereof it is in the best interests of the District to enter into Stormwater Management Program Service Agreements with Member Communities for implementation of the Regional Stormwater Management Program.

Section 2. That this Board hereby authorizes and approves the Executive Director to enter into Stormwater Management Program Service Agreements with Member Communities for implementation of the Regional Stormwater Management Program.

Section 3. That this Board authorizes the Executive Director to execute all documents and do all things necessary to effect the terms and conditions of the Stormwater Management Program Service Agreements with Member Communities.

Section 4. That this Board declares that all formal actions of the Board concerning and relating to the adoption of this resolution and that all deliberations of the Board and any of its committees that resulted in said formal action were conducted in meetings open to the public and in compliance with all legal requirements, including Section 121.22 of the Ohio Revised Code.

On motion of Mayor DeGeeter seconded by Ms. Kelly, the foregoing resolution was unanimously adopted on March 21, 2013.



---

Sheila J. Kelly, Secretary

Board of Trustees

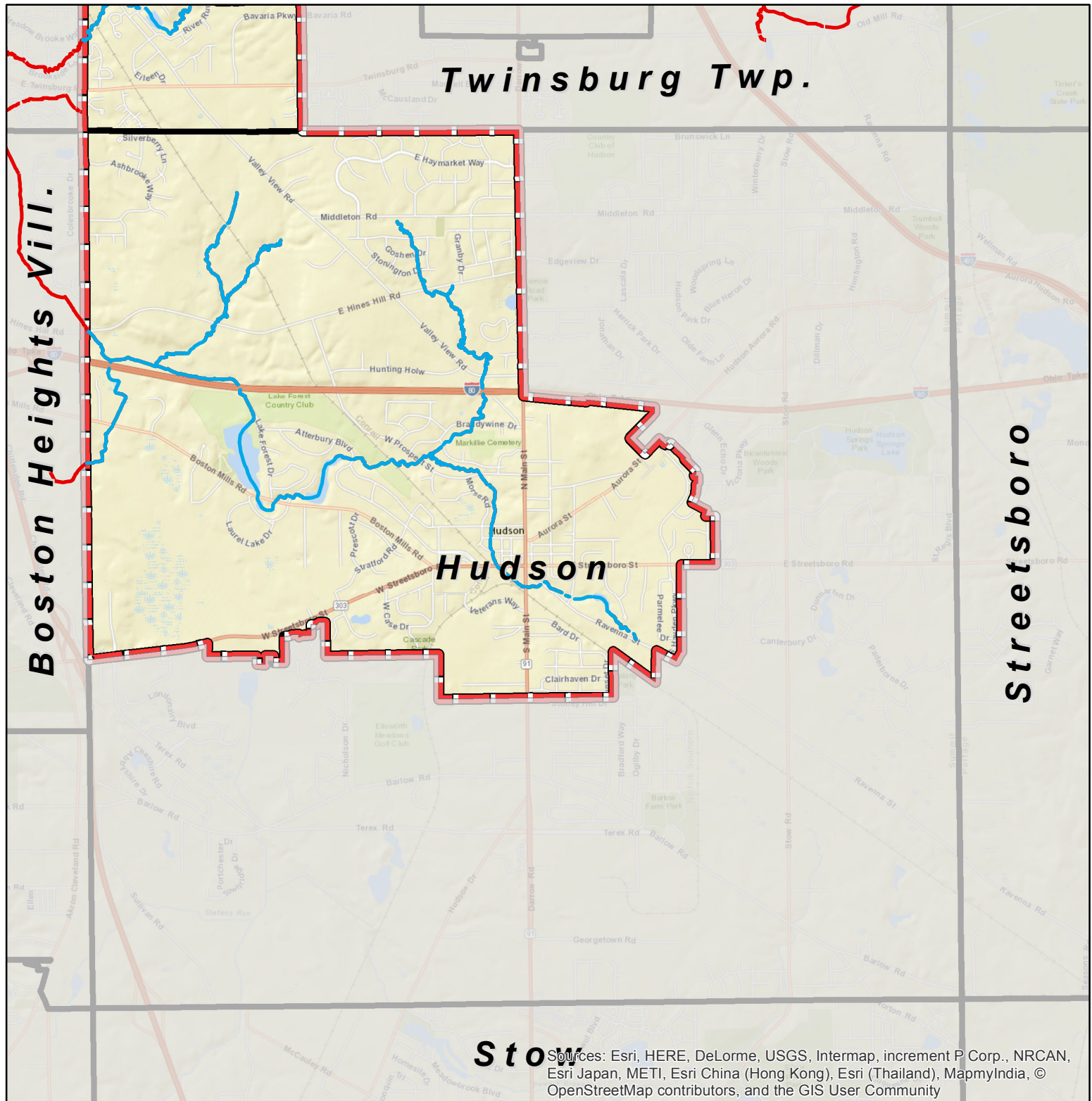
Northeast Ohio Regional Sewer District

# EXHIBIT B

# EXHIBIT B

Insert community  
ordinance/resolution

# EXHIBIT C



- Regional Stream Inside Service Area
- Regional Stream Outside Service Area
- Outside NEORSR Stormwater Service Area
- NEORSR Stormwater Service Area Boundary
- Community Boundary

# Hudson

## Regional Stormwater System



# EXHIBIT D



---

# Stormwater Management Program Inspection & Maintenance Policy

---

NORTHEAST OHIO REGIONAL SEWER DISTRICT



REGIONAL  
STORMWATER  
MANAGEMENT  
PROGRAM

---

Revised: March 28, 2013

---

**Contents**

I. Definitions.....	3
II. Introduction .....	4
III. District Inspection and Maintenance Objectives.....	4
IV. Regional Stormwater System I&M Overview .....	5
1. Non District-owned Assets.....	5
2. District-owned Assets .....	6
V. Regional Stormwater System Assets .....	7
1. I&M Activities by Regional System Asset Type .....	7
a. Open Channels .....	7
b. Basins .....	7
c. Culverted Streams.....	8
d. Transportation Crossings .....	8
e. Dams .....	8
f. Other Stormwater Control Measures .....	9
VI. Local Stormwater System Assets.....	9
VII. Maintenance Activity Prioritization .....	9

## I. Definitions

**Culverted Stream:** A closed conveyance structure designed to carry stormwater and through which stormwater flows.

**Basin:** A stormwater control measure designed to store water for a limited period of a time and provide peak flow attenuation. To be considered a regional basin, a basin must be in line with the Regional Stormwater System and must fulfill the function of causing a significant reduction in peak flow of water through the Regional Stormwater System as determined by the District.

**Dam:** A barrier constructed across an open channel to control or impound the flow of water; may be part of large regional basin facility.

**District-owned Assets:** Those Regional Stormwater System assets that are legally owned and operated by the District.

**I&M Activities:** Inspection and maintenance activities that include, but are not limited to, the inspection, assessment, cleaning, structural maintenance, aesthetic maintenance, emergency repairs, and water quality and habitat maintenance of Regional or Local Stormwater System assets to ensure their stormwater conveyance functionality.

**Local Stormwater System:** The entire system of watercourses, stormwater conveyance structures, or Stormwater Control Measures owned and/or operated by a private entity or a unit of local government other than the District. The Local Stormwater System shall include those watercourses, stormwater conveyance structures, or Stormwater Control Measures not designated as part of the Regional Stormwater System.

**Local Stormwater System Assets:** Those stormwater conveyance structures, channels, and control measures that are owned and/or operated by a private entity or a unit of local government other than the District, including all assets not designated as part of the Regional Stormwater System.

**Open Channel:** A natural or artificial uncovered conveyance structure through which stormwater flows.

**Regional Stormwater System:** The entire system of watercourses, stormwater conveyance structures, and Stormwater Control Measures in the District's stormwater service area that are owned and/or operated by the District or over which the District has right of use for the management of stormwater, including both naturally occurring and constructed facilities. The Regional Stormwater System shall generally include those watercourses, stormwater conveyance structures, and Stormwater Control Measures receiving drainage from three hundred (300) acres of land or more. The District shall maintain a map of the Regional Stormwater System that shall serve as the official delineation of such system.

**Regional Stormwater System Assets:** Those stormwater conveyance structures, channels, and control measures that drain three hundred (300) acres of land or more or are owned by the District.

**Stormwater Control Measures (SCMs):** An activity, measure, structure, device, or facility that helps to achieve stormwater management objectives including, without limitation, schedules of activities, prohibitions of practices, operation and maintenance procedures, treatment requirements, and other practices to prevent or reduce the pollution of water resources, to control stormwater volume and/or rate, or to otherwise limit impacts to the Regional Stormwater System. SCMs shall be designed to minimize maintenance and reduce the potential for failure.

**Transportation Crossings:** Any structures, including bridges, which facilitate the flow of stormwater beneath roads, railroads and other transportation facilities.

## II. Introduction

The Northeast Ohio Regional Sewer District (District) strives to protect and preserve the Regional Stormwater System through its Stormwater Management Program (SMP). In support of this goal, the District performs inspection, maintenance, and emergency repair activities on Regional Stormwater System assets to ensure their conveyance capacity as well as the protection of public safety and real property. These activities are performed as they relate to the District's objectives (see Section III) and as financial resources are available. This report documents the District's policies for funding and performing inspection and maintenance activities on components of the Regional Stormwater System.

## III. District Inspection and Maintenance Objectives

The goal of the District's inspection and maintenance activities under the Stormwater Management Program is to protect and preserve the conveyance capacity of the Regional Stormwater System, as well as protect public safety and real property. This policy was developed to ensure that District inspection and maintenance activities remain aligned with this primary goal, while setting service expectations that are reasonable and viable.

This body of policies was developed to meet the following objectives for the Regional Stormwater System:

- Develop and implement sound, sustainable maintenance practices for stormwater control measures;
- Protect, preserve, and enhance the Regional Stormwater System while controlling costs;
- Prevent premature construction outlay through preventive and predictive maintenance;
- Increase response and repair speed and improve capabilities; and
- Encourage coordination with member communities on activities within their borders.

In addition, these policies are intended to coordinate with the stream monitoring, planning & modeling, and construction programs to achieve multi-objective floodplain and stream system management, and to support other areas of the stormwater management program.

#### IV. Regional Stormwater System I&M Overview

##### 1. Non District-owned Assets

The following table summarizes the District's responsibility for inspection, maintenance activities, and emergency repairs for a variety of Regional Stormwater System assets not owned by the District. The District will be responsible for funding and carrying out facility inspection and assessment, as well as cleaning activities under its maintenance program. Inspections will take place to ensure the conveyance capacity of the asset and identify structural integrity issues (e.g. erosion) that could impact the operation of the Regional Stormwater System. District inspections are not intended to replace inspections otherwise mandated by local, state, or federal requirements (i.e. bridge, culvert, or dam inspections by facility owners and operators).

Activities the District will perform are indicated in the cells labeled "District" for each asset type in the table below. For other maintenance and repair activities, the approach to and funding for the activity varies by asset type. Cases A through E, which encompass the varying approaches, are described below. Section V-1 below describes inspection and maintenance activities that the District will perform for each asset, based on these cases.

Title V of the District's Code of Regulations allows the District access to all Regional Stormwater System assets for inspection purposes. For all other activities, performance will be contingent upon the District's ability to obtain access to the asset.

**Table 1. Summary of District I&M Activities Policy along the Regional Stormwater System**

	Open Channel	Basins	Culverted Streams	Transportation Crossings	Dams
<b>Facility Inspection and Assessment</b>	District	District	District	District	District
<b>Maintenance Program: Cleaning Activities</b>	District	District	District	District	District
<b>Maintenance Program: Structural Maintenance</b>	Case A	Case B	Case B	Case B	Case B
<b>Maintenance Program: Aesthetic Maintenance</b>	Case D	Case E	Case D	Case D	Case E
<b>Maintenance Program: Water Quality &amp; Habitat Maintenance</b>	Case C	Case C	Case C	Case C	Case C
<b>Emergency Repairs</b>	Case A	Case B	Case B	Case B	Case B

*Case A*

Activities that have been classified as Case A are deemed a high priority due to their direct bearing on the SMP core mission. Case A activities are carried out to mitigate conditions in which stormwater conveyance, public safety, or property are likely to be threatened. In general, the District intends to carry out Case A activities without seeking funding from any external parties. However, these activities are subject to funding availability, project size, and other factors.

*Case B*

Activities that have been classified as Case B are deemed a high priority due to their direct bearing on the SMP core mission. Case B activities are carried out to mitigate conditions in which stormwater conveyance, public safety, or property is likely to be threatened. The District will seek to inform the asset owner and share project costs, as assets for which activities are categorized as Case B are likely to have an owner who is otherwise interested in the proper function of the asset. The timeliness of maintenance activities classified as Case B can be improved through increased willingness of the asset owner, or another third party, to share costs.

*Case C*

Activities that have been classified as Case C are important to the District's goal of improving water quality and environmental health, but are indirectly related to the SMP goal of maintaining stormwater conveyance. As such, case C activities may be carried out when possible as part of routine cleaning activities.

*Case D*

Activities that have been classified as Case D are deemed a lower priority due to their indirect relationship to the SMP core mission. Case D activities may be carried out by the District under extraordinary circumstances. However, the District will first seek to notify the owner and encourage resolution of the issue without directly funding or performing the activity.

*Case E*

Activities that have been classified as Case E are deemed a lower priority due to their indirect relationship to the SMP core mission. Case E activities may be carried out when they are incidental to routine cleaning or repair activities already taking place. The District will seek to notify the owner and encourage resolution without directly funding or performing the activity.

## 2. District-owned Assets

The District will fund and carry out (through contractual agreement, if applicable) all cleaning, inspection, maintenance, repair, and replacement activities on District-owned assets necessary to maintain adequate stormwater conveyance. In cases of damage or destruction not caused by regional stormwater (e.g. as the result of a traffic accident), the District may hold other parties financially responsible for these activities.

## V. Regional Stormwater System Assets

For all Regional Stormwater System assets, the District will conduct inspection, maintenance, and emergency repair activities in accordance with this policy to maintain their conveyance capacity and structural integrity. Funding availability and time may limit the District's ability to perform certain activities that are not considered crucial to fulfilling the District's core mission. The District's responsibility for inspection and maintenance activities as they pertain to each asset type are described herein.

### 1. I&M Activities by Regional System Asset Type

#### a. Open Channels

For assets classified as open channels, the District will be responsible for the inspection and cleaning of the asset to a degree that ensures the conveyance capacity of the channel. These are not intended to replace inspections otherwise mandated by local, state, or federal requirements. The District will remove accumulated trees, brush, litter and debris that block the cross-section and restrict conveyance of stormwater of the Regional Stormwater System in accordance with level of service standards.

The District will also fund and carry out structural maintenance and emergency repair activities integral to conveyance, such as stream bank stabilization, as it identifies such needs. In general, the District intends to carry out these activities without seeking funding from any external parties. However, these activities are subject to funding availability, project size, and other factors.

The District will not perform aesthetic maintenance activities, including litter or man-made debris removal (such as shopping carts) or dredging, except for under extraordinary circumstances. However, the District will seek to notify the owner and encourage resolution without direct involvement. At the District's discretion, it may provide water quality or habitat maintenance activities as part of routine cleaning activities.

#### b. Basins

For all assets classified as regional basins, the District will inspect the structural and mechanical integrity of, and clean, the basin and associated structures and embankments on a routine schedule to a degree that ensures the conveyance capacity of the basin. This includes regular removal of accumulated debris around outfall structures.

Activities performed may include management of vegetation and stabilization of embankments and spillways as they support conveyance and protection of human health and property. To address structural maintenance needs as well as emergency repairs, the District will seek to inform the asset owner. In some cases, the District may seek to share project costs with the owner.

The District will not perform aesthetic maintenance activities, including litter or man-made debris removal or dredging, unless they are incidental to routine cleaning activities, as these activities further the fulfillment of the District's mission. At the District's discretion, it may appropriate provide water quality or habitat maintenance activities as part of routine cleaning activities.

### c. Culverted Streams

For assets classified as culverted streams, the District will be responsible for the inspection and cleaning needs of the asset, contingent upon resource availability, to ensure the conveyance capacity of the culverted stream. The District will perform preventative maintenance cleaning of culverted streams to remove accumulated sediment and debris. Inspections and cleaning will take place to ensure the conveyance capacity of the asset, rather than its structural integrity or other characteristics. These inspections are not intended to replace inspections or maintenance otherwise mandated by local, state, or federal requirements.

To address structural maintenance needs as well as emergency repairs, the District will seek to inform the asset owner and, in some cases, share project costs. Repairing cracks and other structural or repair activities will be performed when they support the goals of stormwater conveyance and protection of public safety and real property.

The District will not perform aesthetic maintenance activities, including graffiti removal, except for under extraordinary circumstances. However, the District will seek to notify the owner and encourage resolution without direct involvement. At the District's discretion, it may provide water quality or habitat maintenance activities as part of routine cleaning activities.

### d. Transportation Crossings

For assets classified as transportation crossings, the District will be responsible for the inspection and cleaning needs of the asset, to a degree that ensures the conveyance capacity of the transportation crossing. The District will perform preventative maintenance cleaning of transportation crossings to remove accumulated woody debris, litter and other debris that obstruct the entrance of bridges and culverts. Inspections and cleaning will take place to ensure the conveyance capacity of the asset and not its structural integrity or other characteristics. These inspections are not intended to replace inspections or maintenance otherwise mandated by local, state, or federal requirements.

To address structural maintenance needs as well as emergency repairs, the District will seek to inform the asset owner and, in some cases, share project costs. These activities will be performed when they support the goals of stormwater conveyance and protection of public safety and real property.

The District will not perform aesthetic maintenance activities, including graffiti removal, except under extraordinary circumstances. However, the District will seek to notify the owner and encourage resolution without direct involvement. At the District's discretion, it may provide water quality or habitat maintenance activities as part of routine cleaning activities.

### e. Dams

For assets classified as dams, the District will be responsible for the inspection and cleaning of the asset to a degree that ensures the conveyance capacity of the dam. The District will remove accumulated trees, brush, litter and debris that block the cross-section/restrict conveyance of stormwater of the Regional Stormwater System in accordance with level of service standards. Inspections and cleaning will take place to ensure the conveyance capacity of the asset, rather than its structural integrity or other



characteristics. These inspections are not intended to replace inspections or maintenance otherwise mandated by local, state, or federal requirements.

The District will also fund and carry out structural maintenance and emergency repair activities, such as channel stabilization, as these needs are identified. The District intends to carry out these activities without seeking funding from any external parties. However, these activities are subject to funding availability, project size, and other factors.

The District will not perform aesthetic maintenance activities, such as large debris removal and mowing, except as incidental to routine cleaning or repair activities already taking place. The District will seek to notify the owner and encourage resolution of maintenance issues without its direct involvement. At the District's discretion, it may provide water quality or habitat maintenance activities as part of routine cleaning activities.

#### f. Other Stormwater Control Measures

Similar to the Regional Stormwater System asset classes discussed above, other stormwater control measures will be inspected and cleaned to support stormwater conveyance capacity and protect public safety and real property, given that the asset in question is holding or conveying regional stormwater. Additional activities will be performed at the discretion of the District, and the District will seek to notify the owner and encourage shared project costs (for those aligned with the District's core mission) or resolution without direct involvement (for all others).

## VI. Local Stormwater System Assets

For Local Stormwater System assets, operation and maintenance activities are not the responsibility of the District.

The District may conduct inspection and repair activities on assets of the Local Stormwater System that it, at its sole discretion, deems necessary or conducive to the proper and efficient functioning of the Regional Stormwater System. For these assets, inspection and maintenance activities will take place on a schedule determined by the District and through agreement with the Local Stormwater System operator to maintain the stormwater conveyance functionality of the Regional Stormwater System or on an emergency basis as required. The District will coordinate with the Local Stormwater System operator and the property owner prior to entering the property and conducting inspection and maintenance activities.

## VII. Maintenance Activity Prioritization

The District will attempt to address all inspection and cleaning needs on a routine basis. For other activities, timing and availability of funds may limit its performance. In determining which activities to prioritize, the District will consider the cost of the activity and its potential benefit to the Regional Stormwater System or to the District. Third party/owner contributions to costs, including the application

by a Member Community of Community Cost-Share Program funds, may increase the prioritization of a particular activity. In addition, these primary considerations will be made:

- 1) Those activities resulting in significant **improvements to the Regional Stormwater System** will be prioritized more highly than others. For example, replacing a section of culverted stream that is already near capacity will have a greater impact than replacing one that is functioning properly.
- 2) **Criticality of the current state of an asset** represents its nearness to the end of its useful life. Timely replacement is preferable to eventual asset failure as it can protect the downstream Regional Stormwater System. Catastrophic failure of an asset would result in the highest criticality ranking because downstream effects may already be occurring.
- 3) The **level of threat to public safety and real property** is an important consideration in all of the District's operations. Activities may be prioritized more highly that will reduce the upstream area's susceptibility of flood events and other impacts of the Regional Stormwater System on public safety and real property.

# EXHIBIT E



## **Northeast Ohio Regional Sewer District Community Cost-Share Program Policy December 11, 2015**

### **Section 1.0 Introduction**

The Community Cost-Share Program provides funding to Member Communities for community-specific stormwater management projects. To implement the Community Cost-Share Program, the Northeast Ohio Regional Sewer District (District) has formed a financial account termed “Community Cost-Share Account” for the aggregation and dissemination of funds derived from Stormwater Fee revenues collected in each Member Community.

A minimum of 25% of the total annual Stormwater Fee revenue collected in each Member Community is allocated to the Community Cost-Share Account for each Member Community. The Community Cost-Share Account is under the control of the District, with disbursement of funds to Member Communities through an application process outlined in this document.

Member Communities may apply for Community Cost-Share Program funds any time such funds are available, and may accumulate up to five years of Community Cost-Share funds. However, if a Member Community does not apply to use Year 1’s Community Cost-Share funds by July 1<sup>st</sup> of Year 5, the funds will revert back to the District’s Stormwater Account. Member Communities may accumulate Community Cost-Share funds beyond this 5 year limit based on a plan approved by the District for the use of the accumulated funds.

### **Section 2.0 - Project Eligibility**

To qualify for Community Cost-Share Program funds the Member Community must maintain compliance with *Title V: Stormwater Management Code*. A Community Cost-Share Program project must clearly promote or implement the goals and objectives of the District set forth in Title V and must be intended to address current, or minimize new, stormwater flooding, erosion, and water quality problems.

- 2.1. To be considered for funding, projects must at a minimum be:
  1. Located within a Member Community,
  2. Benefit the Regional Stormwater System, and
  3. Meet all applicable District, federal, state and local regulations.
- 2.2. Eligible projects can include, but are not limited to, the following:
  1. Projects that reduce volume, flow rate, or pollutant load of stormwater to the Local Stormwater System or Regional Stormwater System;



2. Projects or activities that help Member Communities meet their NPDES Phase II requirements under Ohio EPA or other Clean Water Act mandates;
3. Projects necessary to mitigate separate sanitary sewer overflow;
4. Repair, replacement or cleaning of local storm sewers, catch basins, and other components of the Local Stormwater System;
5. Maintenance of stormwater control measures;
6. Mapping activities required under NPDES Phase II;
7. Street sweeping;
8. Purchase of stormwater-related equipment such as street sweepers or vacuum trucks;
9. Matching funds necessary for stormwater-related grant applications; and
10. Operation, maintenance, and capital projects necessary to address stormwater-related problems.

If a proposed activity is not listed above, Member Communities should contact their Watershed Team Leader to review the project prior to submitting an application. The appendix includes a map of the District's Stormwater Service Area with the Watershed Team Leader identified for each Member Community.

### **Section 3.0 - Ineligible Projects**

Community Cost-Share Program funds shall not be used for any project that causes, accelerates, or contributes to flooding, erosion or water quality problems or is otherwise detrimental to the Local or Regional Stormwater System. Prohibited projects include, but are not limited to the following:

1. The application of fill materials in floodplains, riparian areas or wetlands, and the culverting or channelizing of watercourses; or
2. Capital, operation, maintenance, and administrative expenses not directly related to stormwater management.

### **Section 4.0 – Project Application Process and District Approval**

The application and District approval process is listed below.

1. Member Communities submit applications to the Watershed Team Leader by the 30<sup>th</sup> of each month. Applications submitted in Year 5 for projects using Year 1's Community-Cost Share Funds are to be submitted in enough time to be approved by July 1<sup>st</sup> of Year 5. The Community Cost-Share application is available in the *Community Cost-Share Program: Application, Request for Payment and Progress Report Forms* document.



2. District begins review of Community Cost-Share Program applications at the 1<sup>st</sup> of every month. Complete applications will be reviewed by Watershed Programs Department.
3. The District will make the best effort to approve or deny applications within 30 days of the start of review. When an application is approved the Watershed Team Leader will notify the Member Community and begin execution of a legal agreement between the District and the Member Community. If an application is not approved the Watershed Team Leader will provide feedback to the Member Community. Denied applications may be revised and resubmitted based on Watershed Team Leader feedback.

The District will not approve applications unless Community Cost-Share funds are available for the project.

The Watershed Team Leaders are the primary contact for Member Communities for the Community Cost-Share Program. The appendix includes a map of the District's Stormwater Service Area with the Watershed Team Leader identified for each Member Community.

### **Section 5.0 – Community Cost-Share Disbursement**

The District will reimburse Community Cost-Share Program funds for approved projects to Member Communities quarterly by project and at the close of a project. To receive a reimbursement of funds for an approved project, the Member Community shall provide a Progress Report and Request for Payment to their Watershed Team Leader.

Progress Report and Request for Payment forms are included in the *Community Cost-Share Program: Application, Request for Payment and Progress Report Forms* document. Requests for Payment must also include applicable invoices, canceled checks and other appropriate documentation requested by the District's Finance Department to confirm the use of Community Cost-Share Program funds as detailed in the approved project application.

To receive reimbursement for project expenditures the Member Community can submit a Progress Report and Request for Payment on any of the following dates:

<b>Quarterly Reporting Period</b>	<b>Request of Payment Due Date</b>
<b>January thru March</b>	<b>April 30<sup>th</sup></b>
<b>April thru June</b>	<b>July 30<sup>st</sup></b>
<b>July thru September</b>	<b>October 30<sup>st</sup></b>
<b>October thru December</b>	<b>January 30<sup>st</sup></b>
<b>Or Within 30 days of project completion</b>	

The District will not accept Progress Reports or Requests for Payment for activities that are more than one (1) year old.



The District shall process Community Cost-Share Program Requests for Payment within 60 days of receipt of a complete Request for Payment.

### **Section 6.0 - Member Community Responsibilities**

Upon signing an agreement with the District for a Community Cost-Share Program project, the Member Community will be required to implement the following, as applicable:

1. Complete work as detailed in the approved application submitted.
2. Meet with District staff when requested to review progress and project status.
3. Obtain all necessary legal agreements with affected property owners to perform construction; and to bind any successor in title to maintain compliance as specified in the agreement between the District and the Member Community for the Community Cost-Share Program project. The costs of obtaining such legal agreements are eligible for Community Cost-Share Program funds if they are a part of an executable Community Cost-Share Program project approved by the District.
4. Obtain all necessary federal, state and local permits necessary to initiate and complete the Project. This can include but is not limited to Army Corp of Engineers 404 and Ohio EPA 401 water quality certification.
5. Maintain a complete record of the Member Community's maintenance inspections and overall performance of the project for at least three (3) years, or as otherwise specified in the Community Cost-Share Program agreement, and submit the same upon reasonable request to the District. If the Member Community fails to maintain a project funded through the Community Cost-Share Program in accordance with any agreement executed with the District, the Member Community shall be liable for the full amount of any Community Cost-Share Program funds paid for the project. Such amount shall be offset against the Member Community's Community Cost-Share Account.
6. Submit requests to modify the budget, deadline, deliverables, or other components of the Project to the applicable Watershed Team Leader identified in Section 4.00 of this agreement, for approval at least two (2) weeks prior to the execution of the modification.
7. Acknowledge the District on any public advertisement or outreach efforts related to the project.
8. Provide the District the opportunity to have design approval for any signage or public education and outreach efforts related to the project.
9. Permit the District to photograph any project selected for funding and to incorporate the project into the District's overall public education and outreach efforts for stormwater management.



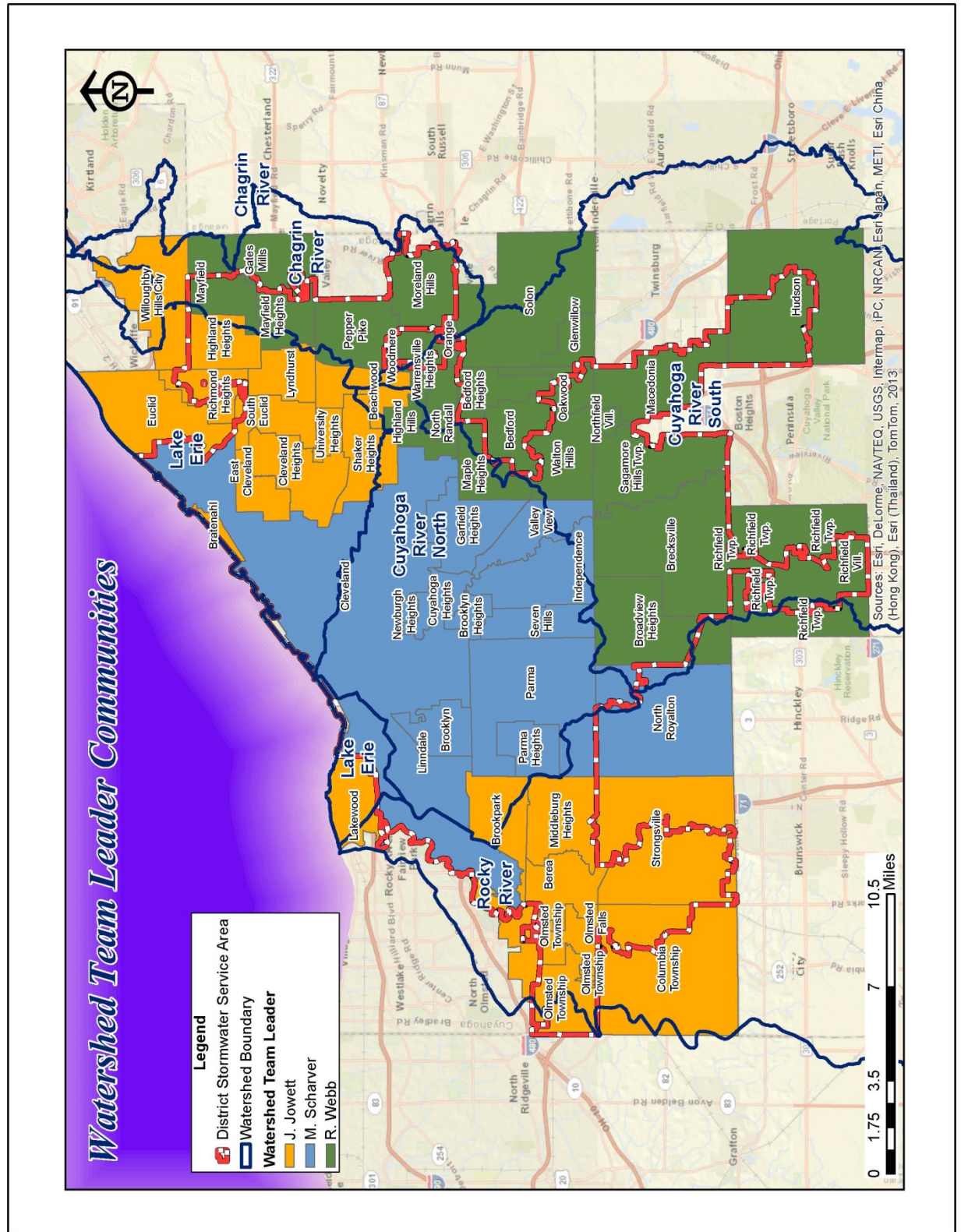
Failure to meet any of these requirements may result in termination of the application and reimbursement of disbursed funds to the District.

**Section 7.0 Modification of Approved Community Cost-Share Project Agreement**

Requests to modify the budget, deadline, deliverables, or other components of an executed Community Cost-Share Project agreement shall be made to the applicable Watershed Team Leader. Such requests should include an explanation of the requested change, including why such a change is needed, as well as a discussion of how such a change will improve the project outcome.



Appendix: Watershed Team Leader Contact for Member Communities





**Watershed Team Leader (WTL) – Member Community Reference Sheet**

<b>Community</b>	<b>WTL</b>		<b>Community</b>	<b>WTL</b>
Beachwood	J.Jowett		Mayfield	R. Webb
Bedford	R. Webb		Mayfield Hts	R. Webb
Bedford Hts	R. Webb		Middleburg Hts	J. Jowett
Berea	J. Jowett		Moreland Hills	R. Webb
Bratenahl	J. Jowett		Newburgh Hts	M. Scharver
Brecksville	R. Webb		North Royalton	M. Scharver
Broadview Hts	R. Webb		North Randall	R. Webb
Brooklyn	M. Scharver		Northfield	R. Webb
Brooklyn Hts	M. Scharver		Oakwood	R. Webb
Brook Park	J. Jowett		Olmsted Falls	J. Jowett
Cleveland	M. Scharver		Olmsted Twp	J. Jowett
Cleveland Hts	J. Jowett		Orange	R. Webb
Columbia Twp	J. Jowett		Parma	M. Scharver
Cuyahoga Hts	M. Scharver		Parma Hts	M. Scharver
East Cleveland	J. Jowett		Pepper Pike	R. Webb
Euclid	J. Jowett		Richfield Vlg	R. Webb
Garfield Hts	M. Scharver		Richmond Hts	J. Jowett
Gates Mills	R. Webb		Sagamore Hills	R. Webb
Glenwillow	R. Webb		Seven Hills	M. Scharver
Highland Hills	R. Webb		Shaker Hts	J. Jowett
Highland Hts	J. Jowett		Solon	R. Webb
Hudson	R. Webb		South Euclid	J. Jowett
Independence	M. Scharver		Strongsville	J. Jowett
Lakewood	J. Jowett		University Hts	J. Jowett
Linndale	M. Scharver		Valley View	M. Scharver
Lyndhurst	J. Jowett		Walton Hills	R. Webb
Macedonia	R. Webb		Warrensville Hts	R. Webb
Maple Hts	R. Webb		Willoughby Hills	J. Jowett



*Community Cost-Share Program Policy  
December 11, 2015*

Watershed Team Leader Contact Information

**Matt Scharver**

3900 Euclid Avenue  
Cleveland, OH 44115-2506  
Northeast Ohio Regional Sewer District  
(216) 881-6600 Ext. 6880  
[scharverm@neorsd.org](mailto:scharverm@neorsd.org)

**Rachel Webb**

3900 Euclid Avenue  
Cleveland, OH 44115-2506  
Northeast Ohio Regional Sewer District  
(216) 881-6600 Ext. 6645  
[webbr@neorsd.org](mailto:webbr@neorsd.org)

**Jeff Jowett**

3900 Euclid Avenue  
Cleveland, OH 44115-2506  
Northeast Ohio Regional Sewer District  
(216) 881-6600 Ext. 6881  
[jowettj@neorsd.org](mailto:jowettj@neorsd.org)

# EXHIBIT F



**Northeast Ohio Regional Sewer District  
Watershed Advisory Committee Policy  
December 11, 2015**

## **Introduction**

As a component of the Northeast Ohio Regional Sewer District's (District) Regional Stormwater Management Program, as described in *Title V: Stormwater Management Code* (Title V), the District has established Watershed Advisory Committees (WAC) for those portions of the following watersheds within the District's stormwater service area.

- Chagrin River
- Cuyahoga River North Subwatersheds
- Cuyahoga River South Subwatersheds
- Lake Erie Direct Tributaries
- Rocky River

The core responsibility of a WAC is to advise the District on Regional Stormwater Management Program activities and priorities in each watershed. This includes reviewing and providing feedback and recommendations on the following watershed specific plans and Regional Stormwater Management Program areas:

- Stormwater Master Plans,
- Stormwater Construction Plans,
- Inspection, Operation, Maintenance and Monitoring Activities,
- Regional Stormwater Standards, if developed, and
- Municipal Separate Storm Sewer System (MS4) Stormwater Management Programs (Phase II).

This policy outlines the following related to WACs:

- Section 1.0 Watershed Advisory Committee Organization and Members
- Section 2.0 Watershed Advisory Committee Responsibilities
- Section 3.0 Watershed Advisory Committee Meeting Schedule and Expectations

In reviewing this policy, please note the following:

- Title V includes definitions for terms related to the Regional Stormwater Management Program, such as Member Community, Local Stormwater System, Regional Stormwater System, and Stormwater Control Measures. These terms are used in this policy. Please refer to Title V for their definition. These definitions are not restated in this policy.
- The WACs represent a formal mechanism for regular contact between Member Communities and the District. WACs are not, however, intended to be the only mechanism of communication between Member Communities and the District. District staff, specifically Watershed Team Leaders, are available to Member Communities at any time to discuss issues related to the Regional Stormwater Management Program.



## **Section 1.0 – Watershed Advisory Committee Organization and Members**

A WAC is composed of a representative from each Member Community and public agency with control of infrastructure in the watershed. The members of the WAC serve at the pleasure of their appointing Member Community or public agency. The details of these appointments are discussed below.

Each Member Community in the watershed holds one position on the WAC. The Member Community's representative and an alternate are designated by the Mayor or Township Trustees. In the event that a Member Community is in two or more watersheds, the Member Community has one position on each applicable WAC.

Public agencies with control of infrastructure, including stormwater conveyance structures and Stormwater Control Measures, in the applicable watershed also hold one position on each relevant WAC. These public agencies include, but are not limited to, the following:

1. Board of County Commissioners or County Executive in Cuyahoga, Lorain and Summit Counties
2. Greater Cleveland Regional Transit Authority
3. Park Districts (created under ORC 1545), specifically the Cleveland Metroparks and Metroparks Serving Summit County
4. Ohio Department of Transportation
5. Ohio Turnpike Commission

The Director of each public agency designates the agency's representative and an alternate for the WAC. In the event that an agency is in two or more watersheds, the agency has one position on each applicable WAC.

Other interested entities may attend WAC meetings. These include non-profit groups that work in the watershed or with Member Communities on conservation and watershed projects. These other interested entities are not formal members of the WACs.

Each WAC is assigned a Watershed Team Leader from the District's Watershed Programs Department. The Watershed Team Leader is responsible for coordinating WAC activities, meetings, and action items. See the Appendix for a list of each watershed's WAC members and a map of the watersheds in the Regional Stormwater System.

## **Section 2.0 - Watershed Advisory Committee Responsibilities**

WAC members will be asked to review, provide input and provide information on:





1. Stormwater Master Plans,
2. Stormwater Construction Plans,
3. Inspection, Operation, Maintenance and Monitoring Activities,
4. Regional Stormwater Standards, if developed, and
5. MS4 Stormwater Management Programs (Phase II).

The following sections outline each of these areas and the applicable WAC responsibilities.

#### Section 2.1 - Stormwater Master Plans

The District is developing Stormwater Master Plans in each watershed to guide the activities of the Regional Stormwater Management Program and to address the needs of the Regional Stormwater System and watershed. The Stormwater Master Plans will be completed for subwatersheds in each of the five watersheds within the District's stormwater service area. The District may not develop Stormwater Master Plans for subwatersheds that only contain a small portion of the District's stormwater service area unless it becomes necessary for overall regional stormwater management purposes.

Stormwater Master Plans assess the conditions of the watershed and the Regional Stormwater System and assess points where improvements to the Regional Stormwater System can be made to improve flood control, reduce erosion, and reduce chronic stormwater maintenance problems. Stormwater Master Plans also identify projects to be included in the Stormwater Construction Plan and inspection, operation, maintenance and monitoring activities. Stormwater Master Plans, in conjunction with other watershed planning documents such as watershed action plans and balanced growth plans, present a holistic view of the watershed.

The District's Engineering and Construction Department leads the development of the Stormwater Master Plans. The WACs are engaged in Stormwater Master Plan development through the Watershed Team Leaders. During the development of Stormwater Master Plans the WACs will be provided the opportunity to review the findings of the watershed assessment and stormwater master planning process, and to provide input on project prioritization within a watershed. The District's Engineering and Construction Department may also communicate directly with Member Communities for specific details on the watershed and stormwater management in their community during Stormwater Master Plan development. Stormwater Master Plans are updated as necessary and the WACs will be asked to review and provide input on the Stormwater Master Plans during the updating process.

#### Section 2.2 - Stormwater Construction Plan

The Stormwater Construction Plan is one plan that guides construction activities for the Regional Stormwater System and District owned or operated Stormwater Control Measures. The District's Engineering and Construction Department implements the Stormwater Construction Plan. The Stormwater Construction Plan focuses on Stormwater Control Measures and regional stormwater



infrastructure improvements in each of the five watersheds. The Stormwater Construction Plan is reviewed and updated annually. To be included as a project under the Stormwater Construction Plan, projects must at a minimum meet the intent of the District's Regional Stormwater Management Program and solve or mitigate regional stormwater problems.

The Stormwater Construction Plan undergoes an annual planning process that includes the nomination of new projects, and validation and prioritization of all proposed construction projects. Facilitated by the Watershed Team Leader, the WACs engage in the Stormwater Construction Plan planning process. The WACs are asked to provide the following:

1. Information for new construction projects to be considered for the Stormwater Construction Plan.
2. New information on projects in the current Stormwater Construction Plan as it pertains to the project scope, schedule, priority, permitting and substance.
3. Review of drafts of the Stormwater Construction Plan and input on possible conflicts or opportunities for implementation.

The District developed an early-action Stormwater Construction Plan based on previous stormwater studies such as the *Regional Plan for Sewerage and Drainage - Phase I* and the *Regional Intercommunity Drainage Evaluation Study*. The early-action Stormwater Construction Plan was also based on inspections, investigations and Member Community meetings. These early-action stormwater construction projects are the focus of construction for the first years of the Regional Stormwater Management Program and will commence prior to the completion of Stormwater Master Plans. In their first year, the WACs will be asked to review the current status of the early-action Stormwater Construction Plan and to provide any additional input.

### Section 2.3 - Inspection, Operation, Maintenance and Monitoring Activities

The District conducts inspections, operation, maintenance and monitoring activities on the Regional Stormwater System and District owned and operated Stormwater Control Measures. These activities include:

1. Preventative maintenance inspections of Stormwater Control Measures that fall under the responsibility of the District and District identified areas of concern.
2. Inspections along the Regional Stormwater System to identify areas of maintenance, such as stream bank erosion, and culvert or stream blockages with debris.
3. Operation and maintenance activities on Stormwater Control Measures and the Regional Stormwater System.





These activities are identified through the development of the Stormwater Master Plans, District inspections, Member Community requests and the WACs. The WACs are to provide input on inspection, operation, maintenance and monitoring needs and activities and any prioritization process used to rank activities, and to submit potential operation and maintenance activities to the District for consideration.

#### Section 2.4 - Regional Stormwater Standards

The District may develop additional regional stormwater standards as may be necessary and reasonable to protect the Regional Stormwater System. As discussed in Chapter 6 of Title V, regional stormwater standards will only be developed if deemed necessary by the District and WACs. These standards, if developed, will be based on findings of Stormwater Master Plans for each watershed in the District's stormwater service area and the recommendations of the WACs. Per the requirements of Section 5.0401 of Title V, these additional standards will be developed with review and comment of the WACs, and provided to Member Communities for review and comment prior to consideration, and potential adoption, by the Board of Trustees.

#### Section 2.5 - MS4 Stormwater Management Programs (Phase II) and Technical Advice on Stormwater Issues

Through the WACs the District will provide support to Members Communities on their Phase II MS4 Stormwater Management Programs, and technical advice on flooding, erosion and stormwater management issues along the Local Stormwater System. The District will provide WAC members information on support activities for their stormwater management programs. This support includes but is not limited to:

1. Public Education and Information
2. Public Involvement
3. Illicit Discharge Detection and Elimination Mapping and Source Tracking
4. Good Housekeeping Training

Additionally, the District will provide technical support to Members Communities on stormwater issues such as flooding and erosion control. The District will use the WACs to help determine the type of assistance needed by Member Communities along the Local Stormwater System, and to annually review technical support activities.

#### **Section 3.0 Watershed Advisory Committee Meeting Schedule and Expectations**

The WACs will meet at least twice within a calendar year to review and provide feedback on the annual Stormwater Construction Plan revision process and stormwater master planning updates, and to review and request inspection, operation, maintenance and monitoring activities. Meeting



notification will be provided to those participants identified under Section 1.0 - WAC Organization and Members. At the beginning of each year the District will contact the Mayor or Township Trustees of each Member Community via mail to outline the meeting schedule and agendas, and the process for designating a representative for the WAC. The general meeting agenda for the twice yearly meetings is as follows.

1. Meeting 1 (March)
  - a. Review District Phase II support activities for the year
  - b. Identify new or recurring problem areas
  - c. Discuss operation and maintenance updates and requests
  - d. Review Stormwater Construction Plan and provide information on current projects in Stormwater Construction Plan anticipated for that year
  - e. Nominate new projects for the Stormwater Construction Plan
  - f. Review Stormwater Master Plan updates
2. Meeting 2 (October)
  - a. Discuss operation and maintenance updates and requests for the coming year
  - b. Review draft Stormwater Construction Plan for the coming year
  - c. Review Stormwater Master Plan updates

The Watershed Team Leaders shall preside over the WAC meetings. WAC meetings are documented through meeting minutes and provided to each WAC Member at the next scheduled WAC meeting.

In the first year of implementation of the Regional Stormwater Management Program additional meetings will be scheduled to initiate the WACs. These meetings will be scheduled within the first three months of commencement of the Regional Stormwater Management Program. The goal of these initial WAC meetings is to familiarize the WAC members with the roles and responsibilities of the WACs, and to review the Regional Stormwater Management Program.



**Appendix: List of WAC Members and Potential Interested Entities,  
and Watershed Map for each WAC**

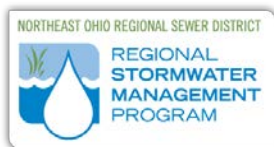


Table 1. Chagrin River Watershed Advisory Committee		
Chagrin River Subwatersheds in Stormwater Service Area	Member (Community/County/Agency)	Potential Interested Entity
<ul style="list-style-type: none"> <li>▪ Beechers Brook</li> <li>▪ Pepper/Luce Creek</li> <li>▪ *Sulfur Springs</li> <li>▪ Upper 40/Foster's Run</li> <li>▪ Upper Tributary to Chagrin River</li> <li>▪ Willey Creek</li> </ul> <p>* Subwatershed in the District stormwater service area is minimal or outside of stormwater service area and may not be included in the Stormwater Master Plan.</p>	<ul style="list-style-type: none"> <li>▪ Beachwood</li> <li>▪ Gates Mills</li> <li>▪ Highland Heights</li> <li>▪ Lyndhurst</li> <li>▪ Mayfield Village</li> <li>▪ Mayfield Heights</li> <li>▪ Moreland Hills</li> <li>▪ Orange Village</li> <li>▪ Pepper Pike</li> <li>▪ Solon</li> <li>▪ Cleveland Metroparks</li> <li>▪ Cuyahoga County</li> <li>▪ Ohio Department of Transportation – District 12</li> </ul>	<ul style="list-style-type: none"> <li>▪ Chagrin River Watershed Partners, Inc.</li> <li>▪ Gates Mills Land Conservancy</li> <li>▪ Western Reserve Land Conservancy</li> </ul>

Total number of WAC members = 13

[illegible]



Table 2. Cuyahoga River – North Subwatersheds Watershed Advisory Committee		
Cuyahoga River North Subwatersheds in Stormwater Service Area	Member (Community/County/Agency)	Potential Interested Entity
<ul style="list-style-type: none"> <li>▪ Big Creek</li> <li>▪ Burke Brook</li> <li>▪ Cuyahoga River CVNP</li> <li>▪ Hemlock Creek</li> <li>▪ Kingsbury Run</li> <li>▪ Lower Cuyahoga River East and West</li> <li>▪ Mill Creek</li> <li>▪ Morgana Run</li> <li>▪ Walworth run</li> <li>▪ West Creek</li> </ul>	<ul style="list-style-type: none"> <li>▪ Beachwood</li> <li>▪ Brook Park</li> <li>▪ Brooklyn</li> <li>▪ Brooklyn Heights</li> <li>▪ Cleveland</li> <li>▪ Cuyahoga Heights</li> <li>▪ Garfield Heights</li> <li>▪ Independence</li> <li>▪ Linndale</li> <li>▪ Maple Heights</li> <li>▪ Newburg Heights</li> <li>▪ North Randall</li> <li>▪ North Royalton</li> <li>▪ Parma</li> <li>▪ Parma Heights</li> <li>▪ Seven Hills</li> <li>▪ Shaker Heights</li> <li>▪ Valley View</li> <li>▪ Walton Hills</li> <li>▪ Warrensville Heights</li>   <li>▪ Cleveland Metroparks</li> <li>▪ Cuyahoga County</li> <li>▪ Cuyahoga Valley National Park</li> <li>▪ Greater Cleveland Regional Transit Authority</li> <li>▪ Ohio Department of Transportation – District 12</li> <li>▪ Ohio Turnpike Commission</li> </ul>	<ul style="list-style-type: none"> <li>▪ Cuyahoga River Remedial Action Plan</li> <li>▪ Friends of Big Creek</li> <li>▪ Friends of Crooked River</li> <li>▪ Western Reserve Land Conservancy</li> <li>▪ West Creek Preservation Committee</li> </ul>

Total number of WAC members = 27



Figure 2. Map of Cuyahoga North Subwatersheds

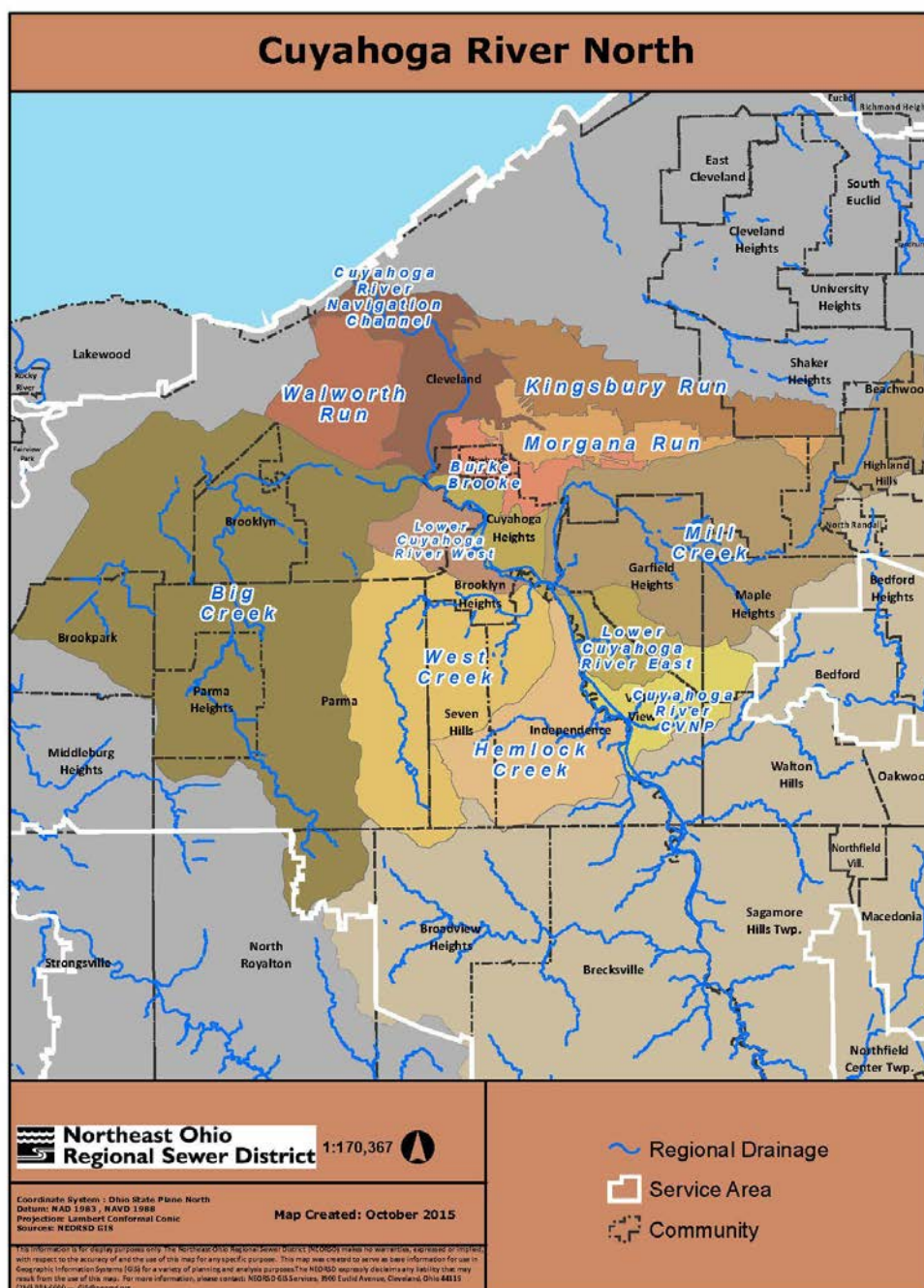




Table 3. Cuyahoga River – South Subwatersheds Watershed Advisory Committee		
Cuyahoga River South Subwatersheds in Stormwater Service Area	Member (Community/County/Agency)	Potential Interested Entity
<ul style="list-style-type: none"> <li>▪ Brandywine Creek</li> <li>▪ Chippewa Creek</li> <li>▪ Cuyahoga CVNP</li> <li>▪ Furnace Run</li> <li>▪ Mud Brook</li> <li>▪ Sagamore Creek</li> <li>▪ Tinkers Creek</li> <li>▪ *Yellow Creek</li> </ul> <p>* Subwatershed in the District stormwater service area is minimal or outside of stormwater service area and may not be included in the Stormwater Master Plan.</p>	<ul style="list-style-type: none"> <li>▪ Beachwood</li> <li>▪ Bedford</li> <li>▪ Bedford Heights</li> <li>▪ Brecksville</li> <li>▪ Broadview Heights</li> <li>▪ Glenwillow</li> <li>▪ Highland Hills</li> <li>▪ Hudson</li> <li>▪ Independence</li> <li>▪ Macedonia</li> <li>▪ Maple Heights</li> <li>▪ North Randall</li> <li>▪ North Royalton</li> <li>▪ Northfield Village</li> <li>▪ Oakwood</li> <li>▪ Orange</li> <li>▪ Parma</li> <li>▪ Richfield Village</li> <li>▪ Sagamore Hills Township</li> <li>▪ Seven Hills</li> <li>▪ Solon</li> <li>▪ Valley View</li> <li>▪ Walton Hills</li> <li>▪ Warrensville Heights</li>   <li>▪ Cleveland Metroparks</li> <li>▪ Cuyahoga County</li> <li>▪ Greater Cleveland Regional Transit Authority</li> <li>▪ Cuyahoga Valley National Park</li> <li>▪ Metroparks Serving Summit County</li> <li>▪ Ohio Department of Transportation – District 12</li> <li>▪ Ohio Department of Transportation – District 4</li> </ul>	<ul style="list-style-type: none"> <li>▪ Chagrin River Watershed Partners, Inc.</li> <li>▪ Cuyahoga River Remedial Action Plan</li> <li>▪ Friends of Crooked River</li> <li>▪ Friends of Yellow Creek</li> <li>▪ Tinkers Creek Watershed Partners, Inc.</li> <li>▪ West Creek Preservation Committee</li> </ul>





Table 3. Cuyahoga River – South Subwatersheds Watershed Advisory Committee		
<b>Cuyahoga River South Subwatersheds in Stormwater Service Area</b>	<b>Member (Community/County/Agency)</b>	<b>Potential Interested Entity</b>
	<ul style="list-style-type: none"> <li>▪ Ohio Turnpike Commission</li> <li>▪ Summit County</li> </ul>	

Total number of WAC members = 32

[illegible]



Table 4. Rocky River Watershed Advisory Committee		
Rocky River Subwatersheds in Stormwater Service Area	Member (Community/County/Agency)	Potential Interested Entity
<ul style="list-style-type: none"> <li>▪ Abram Creek</li> <li>▪ Baker Creek</li> <li>▪ Baldwin Creek</li> <li>▪ Blodgett Creek</li> <li>▪ Plum Creek</li> <li>▪ Rocky River East and West Branch</li> </ul>	<ul style="list-style-type: none"> <li>▪ Berea</li> <li>▪ Broadview Heights</li> <li>▪ Brook Park</li> <li>▪ Cleveland</li> <li>▪ Columbia Township</li> <li>▪ Lakewood</li> <li>▪ Middleburg Heights</li> <li>▪ North Royalton</li> <li>▪ Olmsted Falls</li> <li>▪ Olmsted Township</li> <li>▪ Parma</li> <li>▪ Richfield Village</li> <li>▪ Strongsville</li>   <li>▪ Cleveland Metroparks</li> <li>▪ Cuyahoga County</li> <li>▪ Greater Cleveland Regional Transit Authority</li> <li>▪ Lorain County</li> <li>▪ Ohio Department of Transportation – District 12</li> <li>▪ Ohio Turnpike Commission</li> <li>▪ Summit County</li> </ul>	<ul style="list-style-type: none"> <li>▪ Western Reserve Land Conservancy</li> <li>▪ Rocky River Watershed Council</li> </ul>

Total number of WAC members = 22

Figure 4. Map of Rocky River Watershed

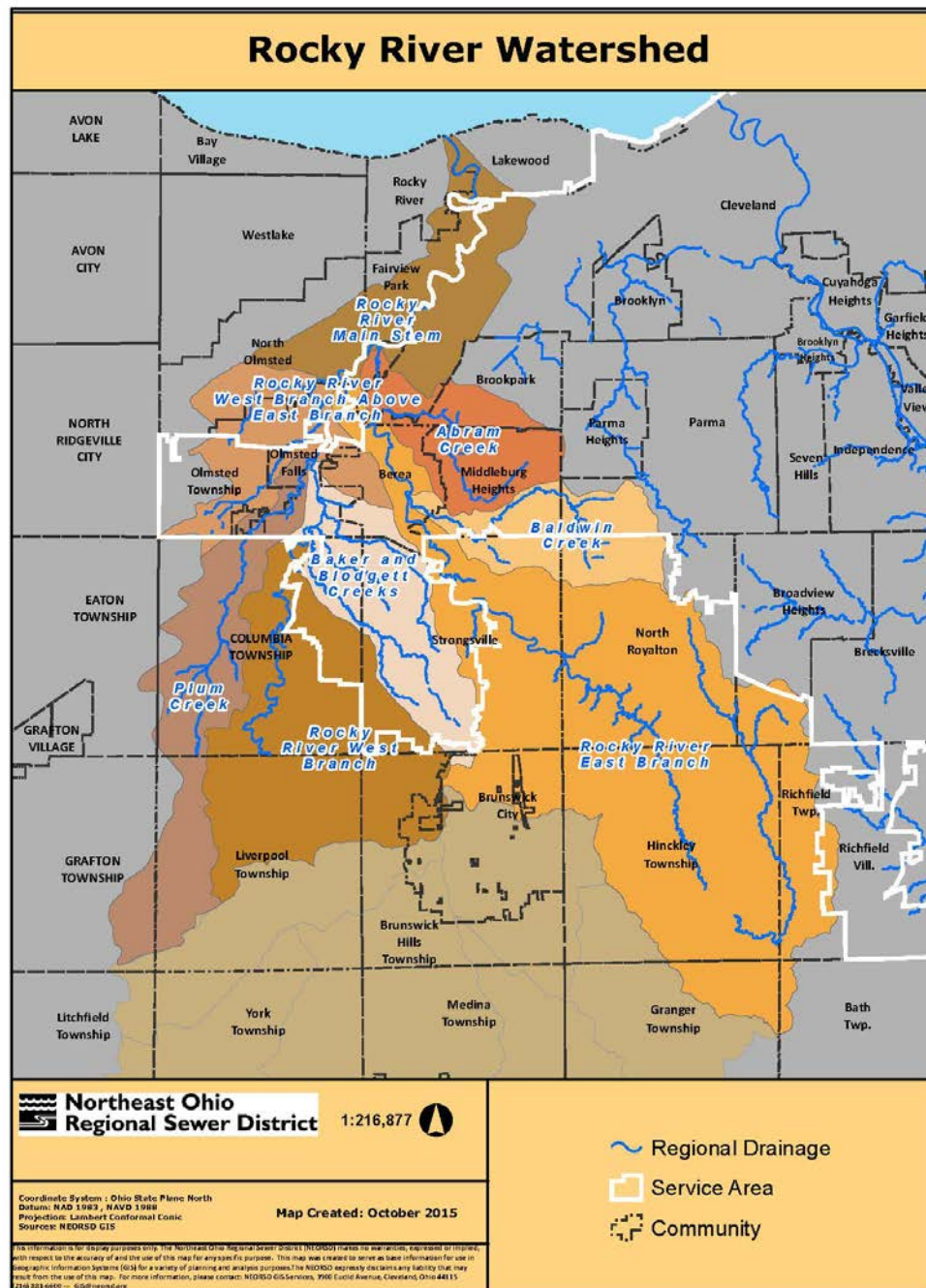


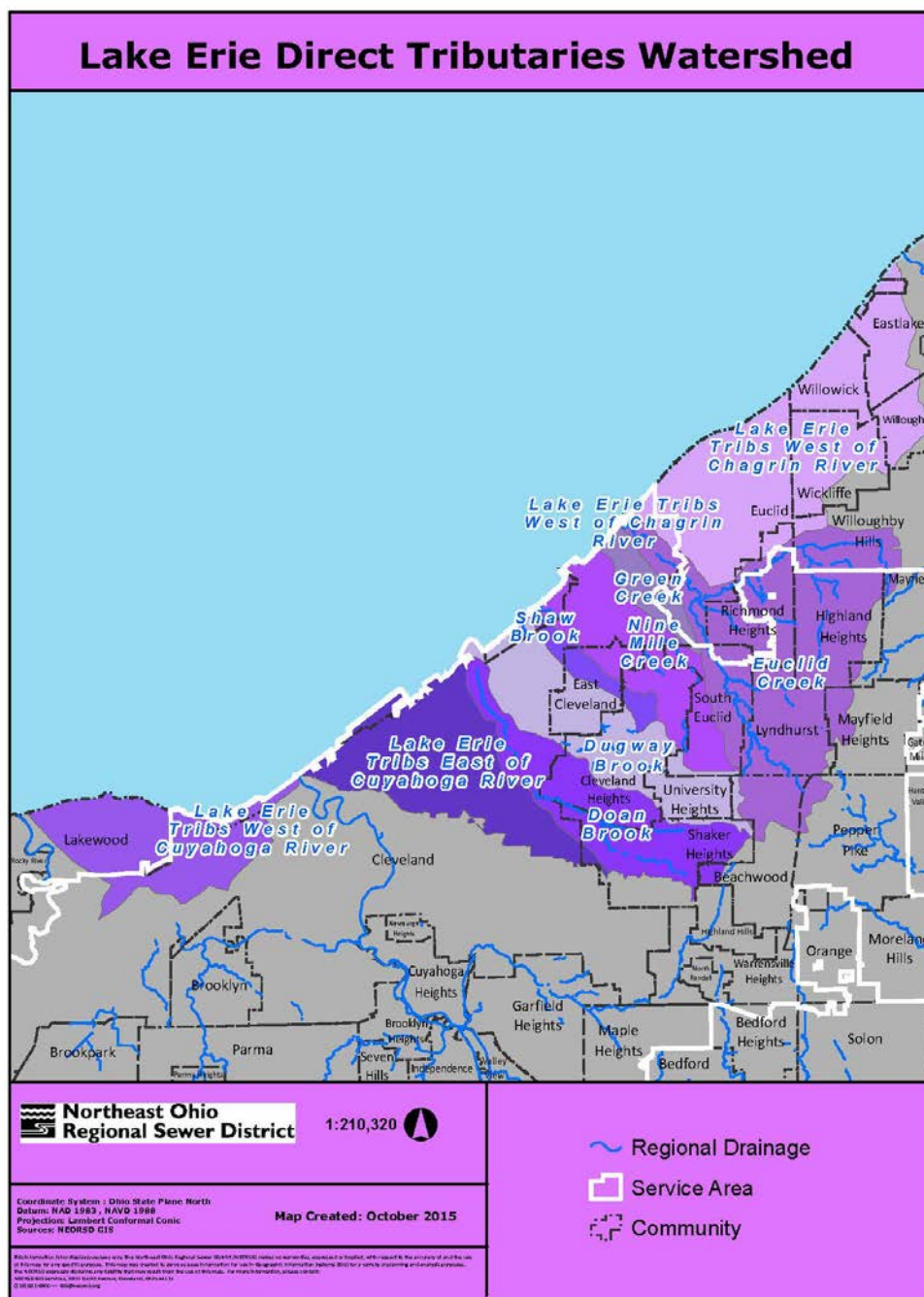


Table 5. Lake Erie Direct Tributaries Watershed Advisory Committee		
Lake Erie Direct Tributaries in Stormwater Service Area	Member (Community/County/Agency)	Potential Interested Entity
<ul style="list-style-type: none"> <li>▪ Doan Brook</li> <li>▪ Dugway Brook</li> <li>▪ Euclid Creek</li> <li>▪ Green Creek</li> <li>▪ Tributaries West of Chagrin River</li> <li>▪ Tributaries East of Cuyahoga River</li> <li>▪ Tributaries West of Cuyahoga</li> <li>▪ Nine Mile Creek</li> <li>▪ Shaw Brook</li> </ul>	<ul style="list-style-type: none"> <li>▪ Beachwood</li> <li>▪ Bratenahl</li> <li>▪ Cleveland</li> <li>▪ Cleveland Heights</li> <li>▪ East Cleveland</li> <li>▪ Euclid</li> <li>▪ Highland Heights</li> <li>▪ Lakewood</li> <li>▪ Lyndhurst</li> <li>▪ Mayfield Village</li> <li>▪ Mayfield Heights</li> <li>▪ Pepper Pike</li> <li>▪ Richmond Heights</li> <li>▪ Shaker Heights</li> <li>▪ South Euclid</li> <li>▪ University Heights</li> <li>▪ Willoughby Hills</li>   <li>▪ Cleveland Metroparks</li> <li>▪ Cuyahoga County</li> <li>▪ Greater Cleveland Regional Transit Authority</li> <li>▪ Ohio Department of Transportation – District 12</li> </ul>	<ul style="list-style-type: none"> <li>▪ Doan Brook Watershed Partnership</li> <li>▪ Euclid Creek Watershed Council</li> <li>▪ Friends of Euclid Creek</li> <li>▪ Chagrin River Watershed Partners, Inc.</li> </ul>

Total number of WAC members = 21



Figure 5. Map of Lake Erie Direct Tributaries



# EXHIBIT G



## Northeast Ohio Regional Sewer District Stormwater Management Plan Review Policy

### Introduction

As a component of the Northeast Ohio Regional Sewer District's (District) Regional Stormwater Management Program, as described in *Code of Regulations of the Northeast Ohio Regional Sewer District Title V: Stormwater Management Code* (Title V), the District has established policies and procedures for reviewing Stormwater Management Plans for certain development activities within Member Communities.

### Section 1.0 - Applicability and District Authority

Per Title V, Member Communities must provide the District, or require to be provided to the District, copies of the proposed Stormwater Management Plan for any project that is regulated by the Member Community's local stormwater management ordinance or resolution and that is located within the District's Stormwater Service Area. Appendix A shows the District's Stormwater Service Area, Member Communities, and the Regional Stormwater System. Title V can be found in the District's website <http://www.neorsd.org/stormwaterprogram.php>.

Failure of a Member Community to meet this submittal requirement is a violation of Title V. The District's comments on Stormwater Management Plans, however, are advisory only and are non-binding on the Member Community and the applicant. The District must provide any comments to the Member Community within a mutually agreed upon timeframe between the District and Member Community. If a mutually agreed upon timeframe is not established, the District must provide comments within 15 business days of receiving the Stormwater Management Plan. Finally, the District's review of Stormwater Management Plans is not intended to replace the Member Community's responsibility for review.

Please note that this requirement does not apply to Stormwater Management Plans for new development or redevelopment in the combined sewer system. These Stormwater Management Plans shall be submitted to the District and reviewed by the District pursuant to the requirements set forth in *Title IV: Combined Sewer Use Code* and the *Submittal Requirements for Connections to the Combined Sewer System*. Appendix B provides a map of the combined sewer system area.

### Section 2.0 - Purpose of District Policy and Review Document

The District will review Stormwater Management Plans for potential impacts to the Regional Stormwater System and/or District-owned or operated Stormwater Control Measures under the Regional Stormwater Management Program. The purpose of this policy document is to provide Member Communities an overview of the District's review process.

### Section 3.0 - Standards and Criteria

Minimum design standards and criteria set forth by the Member Community shall be used for designing stormwater management plans including all applicable federal and state regulations including but not limited to stormwater management, riparian and wetland setbacks, floodplain management and erosion and sediment control. The District will review plans with an





understanding of each Member Community's local stormwater management ordinance or resolution or other applicable requirements as detailed above. Member Communities shall update the District when local regulations pertaining to stormwater management are revised in order for the District to maintain a current list of standards.

#### **Section 4.0 - Procedures for Submittal and Review**

Per Title V, a Stormwater Management Plan is defined as written documents, calculations and engineering drawings that establish the stormwater management for a particular site, parcel, or area which meet the requirements of a Member Community's stormwater regulation. This may also include other items the Member Community may deem needs District review. This section outlines the procedures involved with the review process.

##### Section 4.1 Submittal

Stormwater Management Plan documentation in the separate sewer area of the District's Stormwater Service Area shall be submitted in hard copy or electronic format (preferred) to the District within seven (7) business days of the submission of such plans to the Member Community. Information should be sent to Mary Maciejowski at:

NEORS - Watershed Programs Department

3900 Euclid Ave

Cleveland, OH 44115-2506

or

[maciejowskim@neorsd.org](mailto:maciejowskim@neorsd.org)

##### Section 4.2 District Review

The District will review Stormwater Management Plans for potential impacts to the Regional Stormwater System. The Regional Stormwater System is defined in Title V as the entire system of watercourses, stormwater conveyance structures, and Stormwater Control Measures in the District's Stormwater Service Area that are owned and/or operated by the District or over which the District has right of use for the management of stormwater, including both naturally occurring and constructed facilities.

The Regional Stormwater System generally includes watercourses, stormwater conveyance structures and Stormwater Control Measures receiving drainage from three hundred (300) acres of land or more. A map of the Regional Stormwater System is in Appendix A.

Title V defines a Stormwater Control Measure as an activity, measure, structure, device, or facility that helps to achieve stormwater management objectives including, without limitation, schedules of activities, prohibitions of practices, operation and maintenance procedures, treatment requirements, and other practices to prevent or reduce the pollution of water resources, to control stormwater volume and/or rate, or to otherwise limit impacts to the Regional Stormwater System.

The District's review is not intended to duplicate or replace the Member Community review process. Using a watershed approach, the District will review Stormwater Management Plans



for potential regional impacts to the Regional Stormwater System with respect to flooding, erosion and water quality issues. This may include but not be limited to reviewing post-construction release rates, stormwater volume calculations and post-construction water quality treatment. If a Member Community is partially serviced by the District, the District will review Stormwater Management Plans for projects located anywhere in the Member Community, at the Member Community's request.

#### **Section 4.3 Summary of Submittal Requirements**

The following must be submitted to the District by the Member Community in hard copy and/or electronic format:

- Notice of any changes to local regulation regarding stormwater management
- Stormwater management report and project plan drawings for each project regulated by the member community
- Any supplemental information for District review

#### **Section 5.0 - District Comments**

The District must provide any written comments to the Member Community within a mutually agreed upon timeframe between the District and Member Community once the District receives a complete submittal. If a mutually agreed upon timeframe is not established, the District must provide comments within 15 business days of receiving the complete Stormwater Management Plan.

In order to accurately review a Stormwater Management Plan, the District may request, through the Member Community, additional supporting information (e.g. geotechnical data) if available.

Upon review of a Stormwater Management Plan, the District may encourage the engineer or developer to consider applying for Stormwater Fee Credits after construction is complete.

#### **Section 6.0 - Cost**

There is no cost to Member Communities or applicants for the District to review Stormwater Management Plans. The District provides technical review assistance as part of the Regional Stormwater Management Program to support Member Communities and to protect the Regional Stormwater System.

#### **Section 7.0 - Typical Timeline and Communication**

- Preliminary meeting scheduled, if required by Member Community
- Developer/Engineer submits Stormwater Management Plan to Member Community



*Stormwater Management Plan Review Policy*  
*February 1, 2013*

- Member Community submits or causes to submit plans to District within 7 days of Receipt.
- District will review to ensure submittal is complete and may request additional supporting information. District confirms receipt of plans via email or phone.
- The District provides written comments within an agreed timeframe after receiving a complete submittal. If an agreed timeframe is not established the District must provide comments within 15 business days of receiving a complete Stormwater Management Plan.

**Section 8.0 – Failure to Submit Stormwater Management Plans**

Failure for a Member Community to submit or cause to submit Stormwater Management Plans to the District for review is a violation of Title V – Stormwater Management Code and subject to the full range of actions authorized under the District's Code of Regulations including withholding Community Cost-Share Program funds.





## Appendix B Combined Sewer System Area Map

