

ADDRESS 83 SUBDIVISION NOTTINGHAM DATE 8-11-00
 BUILDER HOMES BY HERSHBERGER PHONE 330-877-1515
 450 W. MAPLE ST. HARTVILLE, OHIO 44632

EXHIBIT A

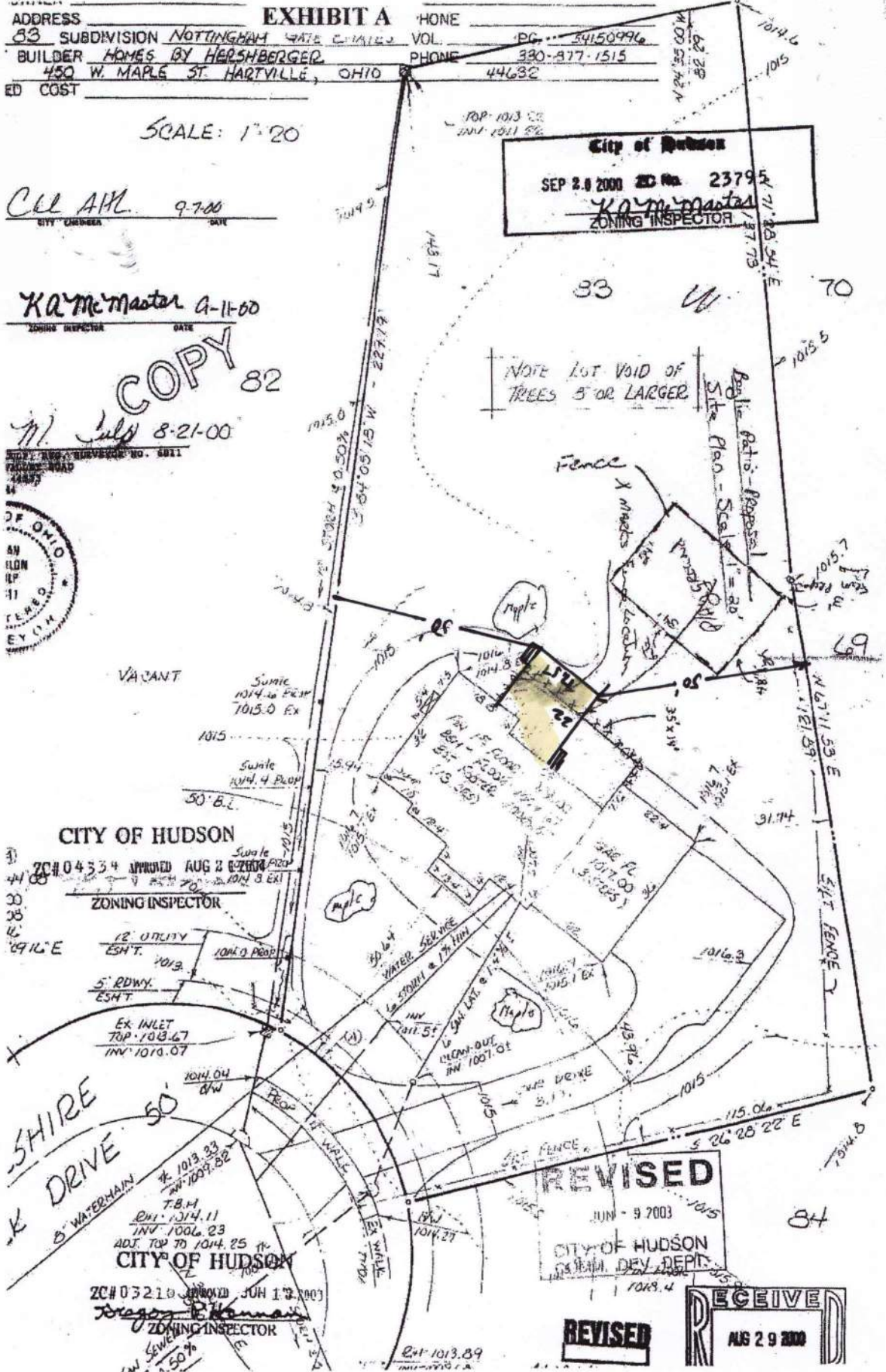
SCALE: 1" = 20'

CUE AM 9-7-00
 CITY ENGINEER DATE

K.A. McMaster 9-11-00
 ZONING INSPECTOR DATE

COPY 82

M. July 8-21-00
 ZONING INSPECTOR NO. 5011



55137248



Pg. 7 of 8
 12/29/2004 01:39P
 MISC

John A. Donofrio, Summit Fiscal Officer



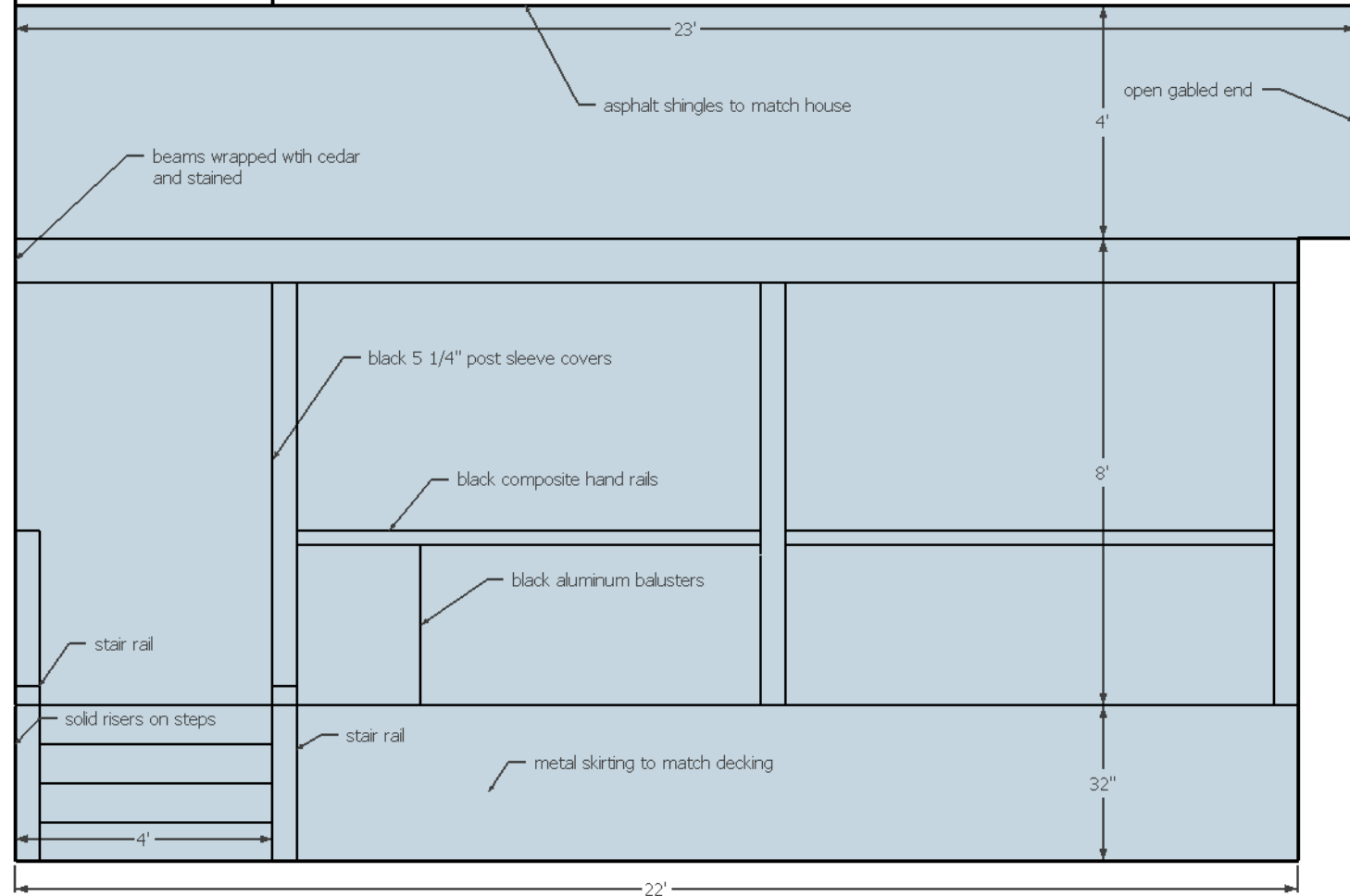
Maniar - Pa



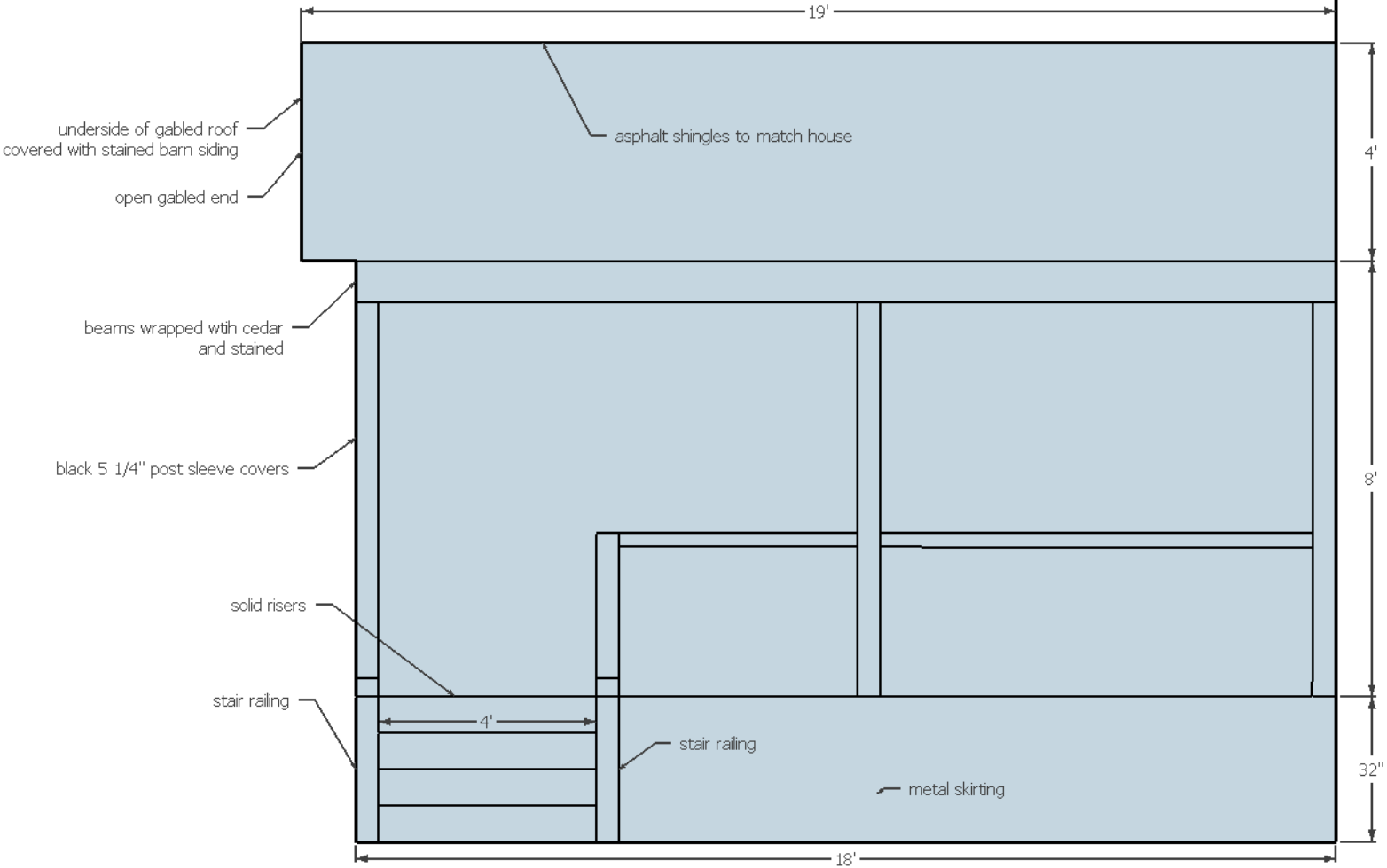
JP GRABENSTETTER
CONSTRUCTION

GRABENSTETTER
CONSTRUCTION

Maniara - Patio - 5208 Wilshire Park Dr. - Side elevation #2
8.7.17
JP Grabenstetter Construction
330-850-1574



Maniar - Patio - 5208 Wilshire Park Dr. - Side elevation #1
8.7.17
JP Grabenstetter Construction
330-850-1574





**RESIDENTIAL DECK
CONSTRUCTION SPECIFICATIONS**
THE COUNTY OF SUMMIT ENFORCES THE 2013 RESIDENTIAL CODE OF OHIO (RCO)

TABLE R403.4
**MINIMUM FOOTING SIZE FOR DECK
FOOTINGS WITHOUT ROOF LOADS**
EXTERIOR DECK AND PORCH FOOTING SIZE INCHES ^{a, b}

| Diameter | Square | Maximum tributary area allowed per post (square feet) |
|----------|--------|--|
| 8 | 8x8 | 14 |
| 10 | 9x9 | 22 |
| 12 | 11x11 | 31.6 |
| 14 | 13x13 | 42.8 |
| 16 | 15x15 | 56 |
| 18 | 16x16 | 70.8 |
| 20 | 18x18 | 87.2 |

R403.4 Exterior deck footings. Exterior deck footings of poured-in-place concrete shall be a minimum of 8 inches (203 mm) thick and extend below the frost depth per Table R301.2(1). The diameter or width of the footing shall comply with Table R403.4.

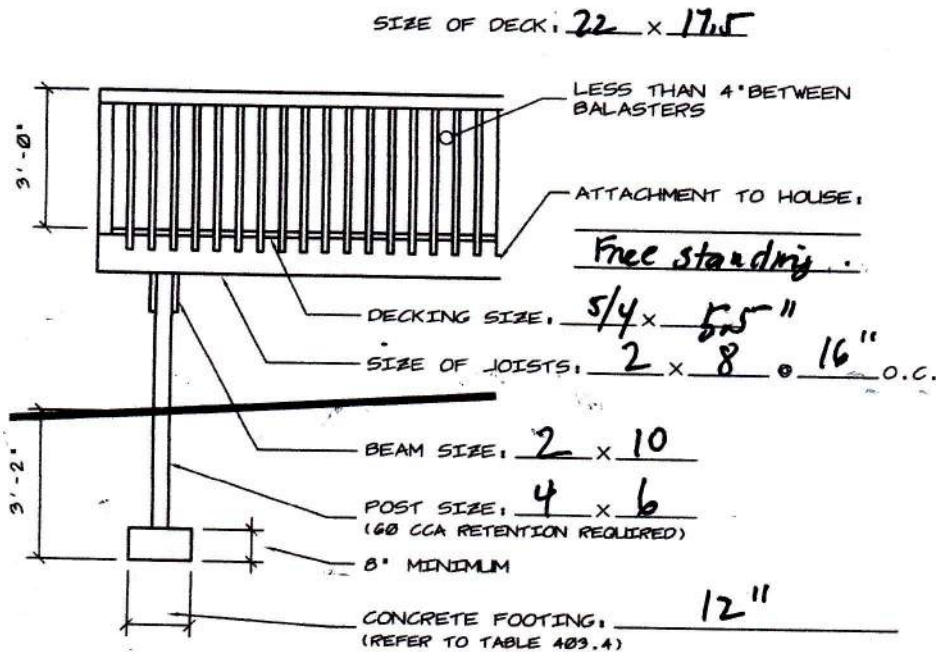
For SI: 1 inch = 25.4 mm, 1 square foot = 0.0929 m²,

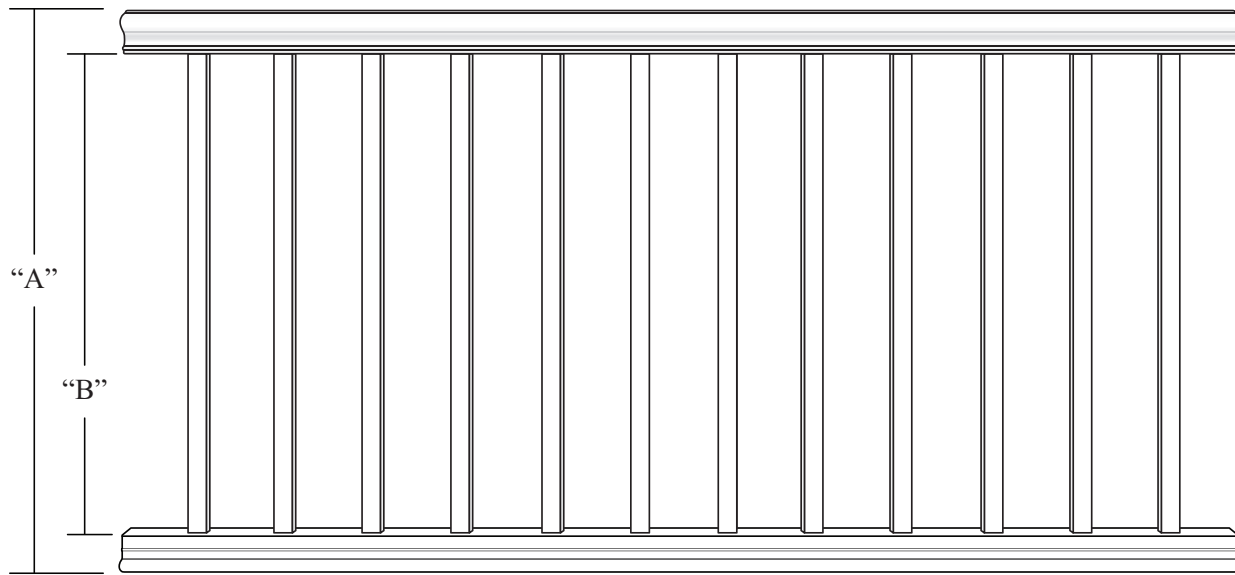
1 pound per square foot = 4.882 10 g/m²

a. Based upon 2,000 pounds per square foot soil bearing capacity.

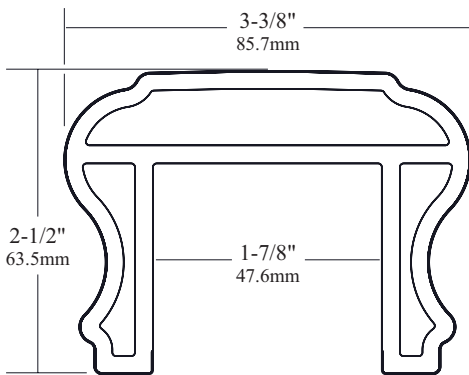
b. Based upon 40 pounds per square foot live load and a 10 pounds per square foot dead load.

**MINIMUM INFORMATION
REQUIRED FOR DECK PERMIT**

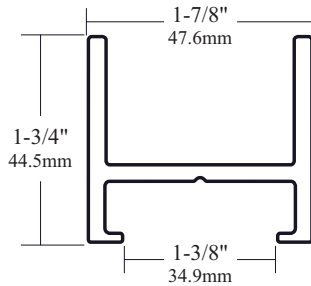




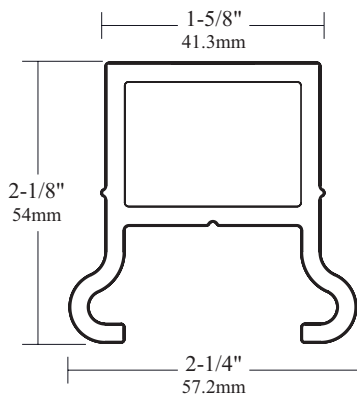
Top Rail Profile



Baluster Retainer



Bottom Rail Profile

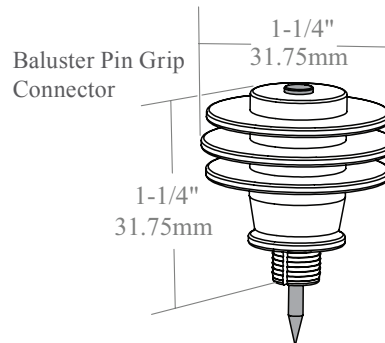


30" Balusters (36" Rail Height)

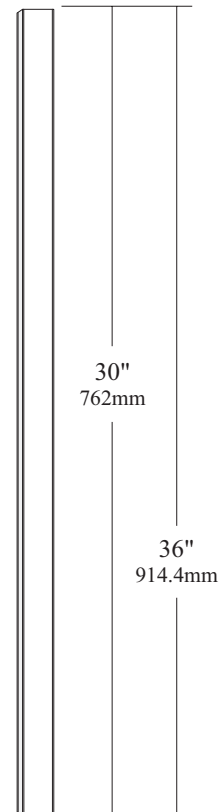
"A" - 34-1/8" 866.8mm
"B" - 29-1/2" 749.3mm

36" Balusters (42" Rail Height)

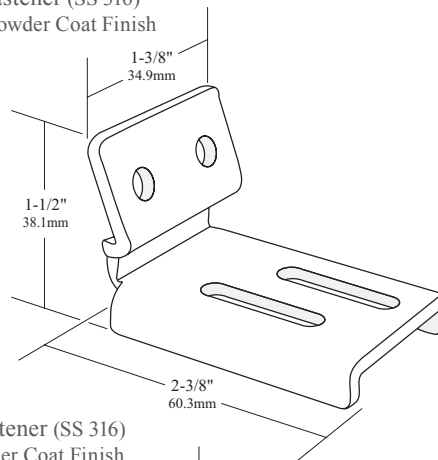
"A" - 40-1/8" 1019.2mm
"B" - 35-1/2" 901.7mm



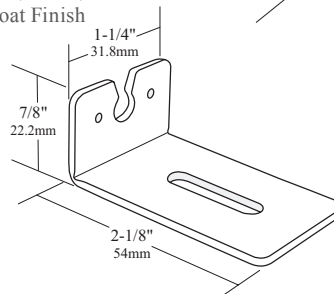
1-1/4" x 1-1/4"
Composite Baluster



Top Rail Fastener (SS 316)
.188" (3mm) Powder Coat Finish



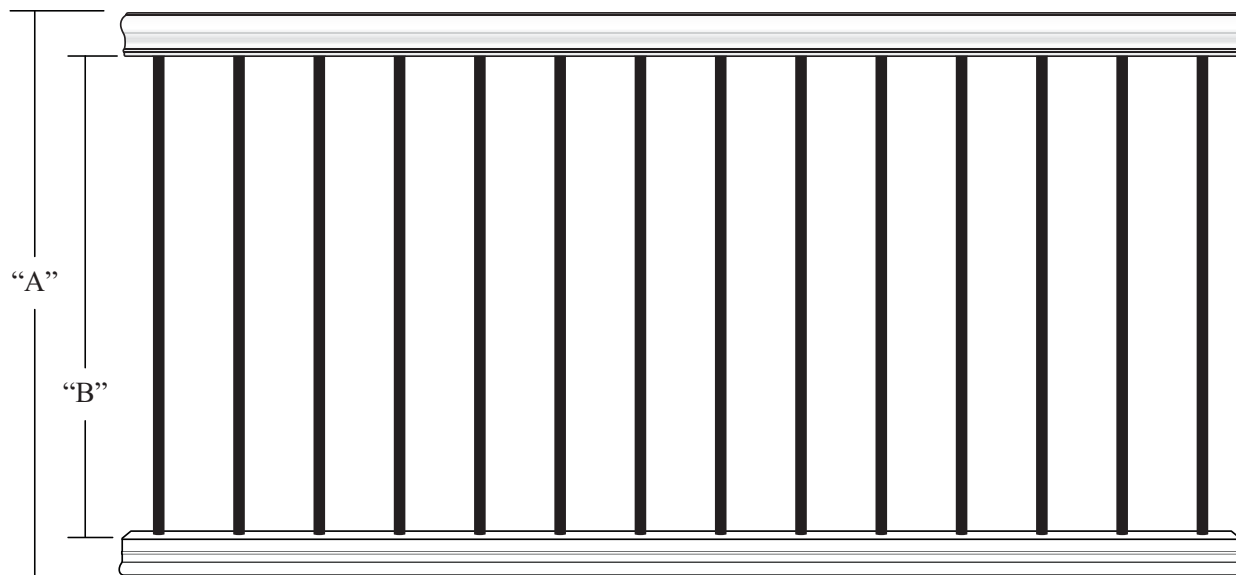
Bottom Rail Fastener (SS 316)
.188" (3mm) Powder Coat Finish



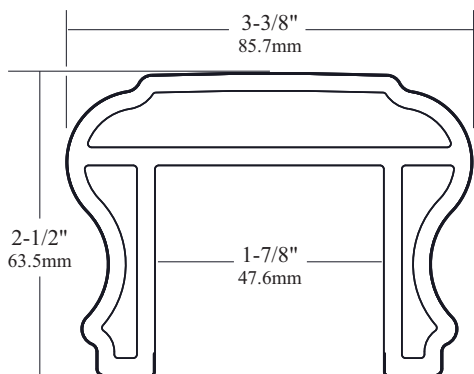
Dimensions and tolerances contained on drawings and figures are for reference only and may not encompass total allowable and approved dimensional variations.

| | | | | | |
|--|--|--|--------|---------|----------|
| DOCUMENT TITLE: | | Composite Baluster Composite Railing Kit | | | |
| <i>This drawing is the property of Fairway Vinyl Systems. Any hard copy of this drawing may not be current. This document and or images contained within may not be reproduced in publication format without express written consent of Fairway Vinyl Systems. Drawings may not be to scale.</i> | | FX2 COMPOSITE RAILING | | | |
| | | UOM | REF# | REV | |
| | | inches/mm | | v1.1 | |
| | | SCALE | SHEET# | 1 of 1 | DRAWN BY |
| | | | | 2/28/13 | |

FAIRWAY
FX2



Top Rail Profile



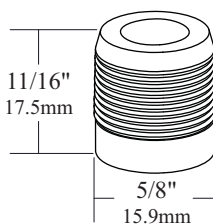
32" Balusters (36" Rail Height)

"A" - 36-1/8" 917.6mm
"B" - 31-1/2" 800.1mm

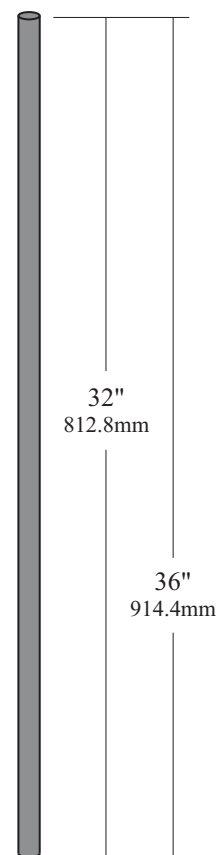
36" Balusters (42" Rail Height)

"A" - 40-1/8" 1019.2mm
"B" - 35-1/2" 901.7mm

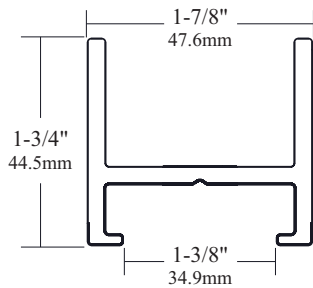
Aluminum Baluster Connector



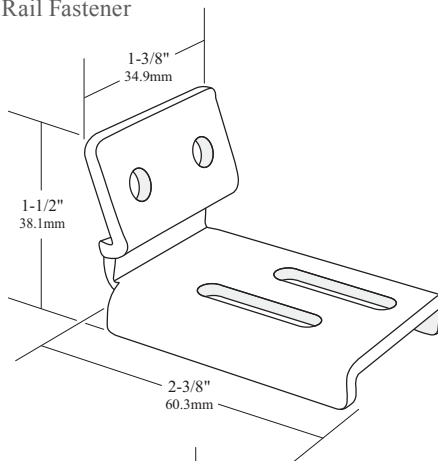
3/4" Aluminum Baluster



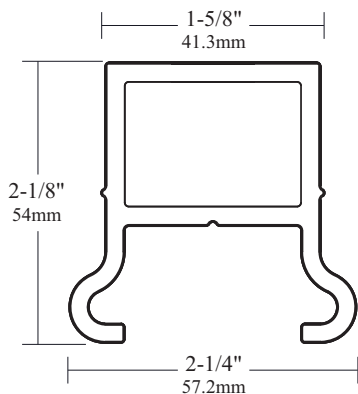
Baluster Retainer



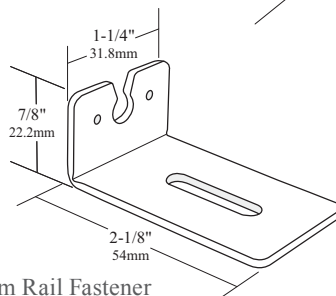
Top Rail Fastener



Bottom Rail Profile



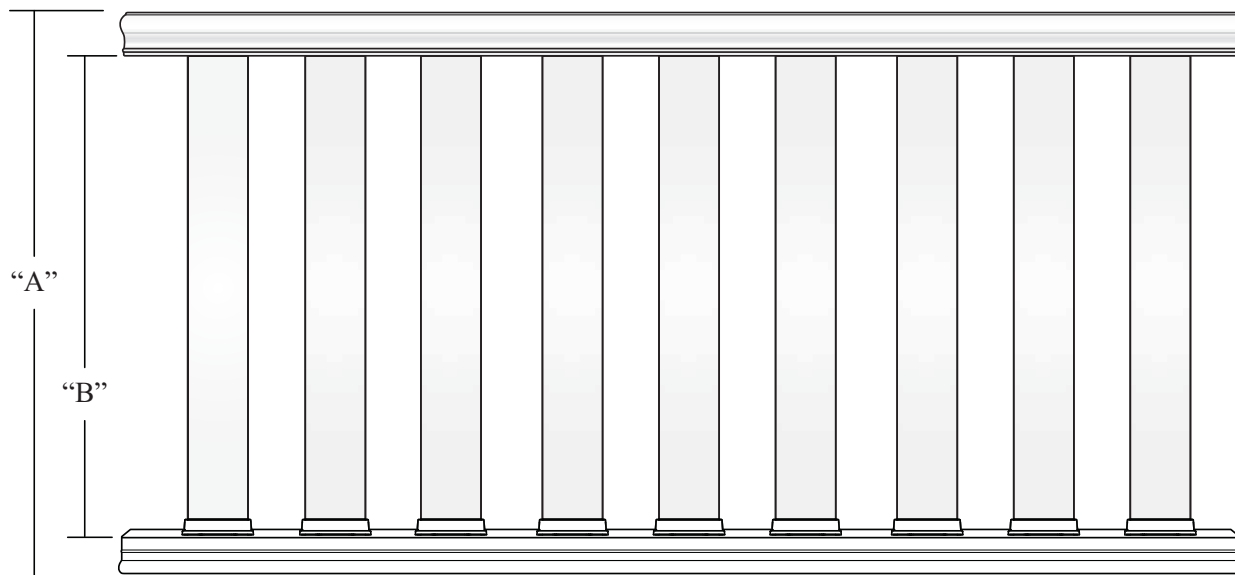
Bottom Rail Fastener



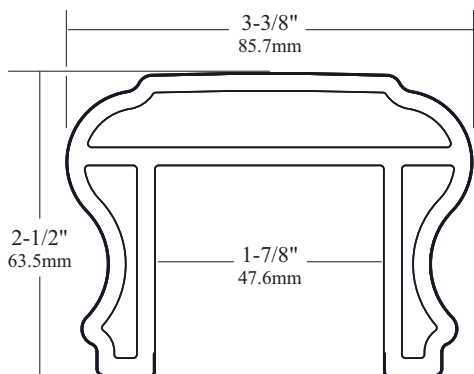
Dimensions and tolerances contained on drawings and figures are for reference only and may not encompass total allowable and approved dimensional variations.

| | | | | | |
|--|--|---|--------|----------|------|
| DOCUMENT TITLE: | | Aluminum Baluster Composite Railing Kit | | | |
| <i>This drawing is the property of Fairway Vinyl Systems. Any hard copy of this drawing may not be current. This document and or images contained within may not be reproduced in publication format without express written consent of Fairway Vinyl Systems. Drawings may not be to scale.</i> | | FX2 COMPOSITE RAILING | | | |
| | | UOM | REF# | REV | |
| | | SCALE | SHEET# | DRAWN BY | DATE |
| | | | | | |
| | | 1 of 1 | | 1/21/10 | |

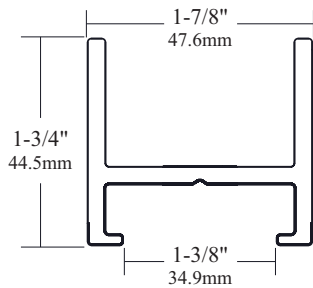
FX2 COMPOSITE RAILING



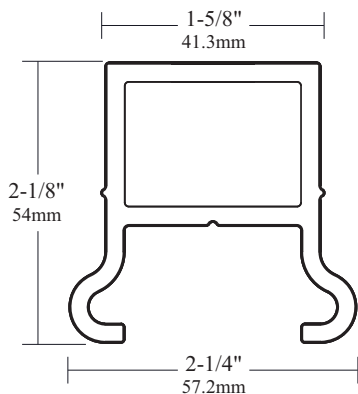
Top Rail Profile



Baluster Retainer



Bottom Rail Profile



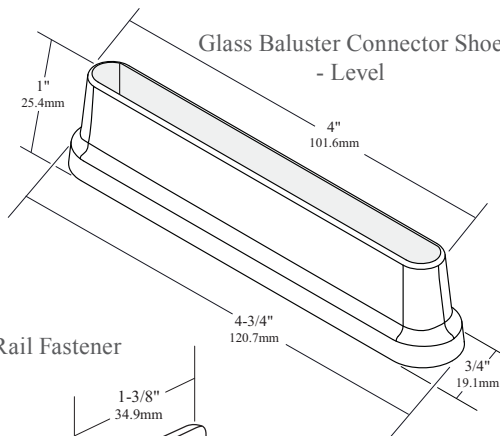
32" Balusters (36" Rail Height)

"A" - 36-7/8" 936.6mm
"B" - 32-1/4" 819.2mm

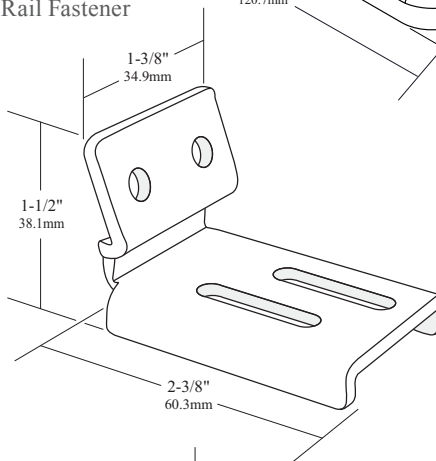
36" Balusters (42" Rail Height)

"A" - 42-7/8" 1089mm
"B" - 37-1/2" 952.5mm

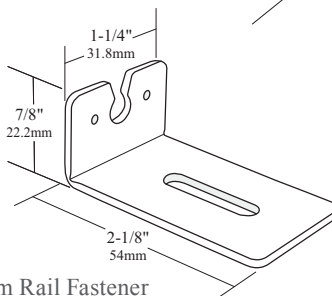
Glass Baluster Connector Shoe
- Level



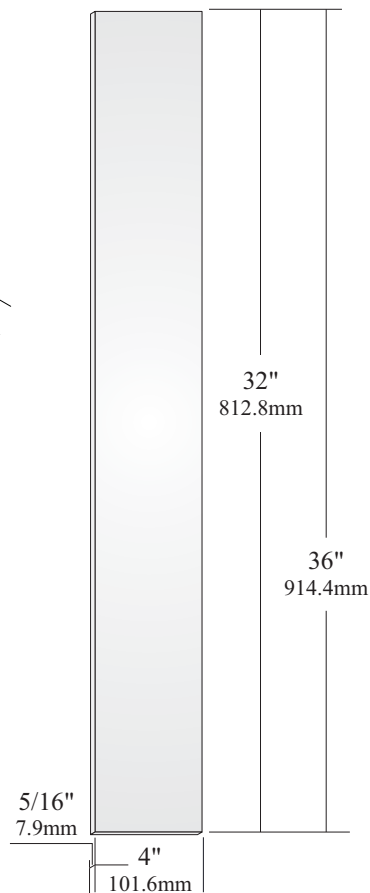
Top Rail Fastener



Bottom Rail Fastener



Glass Baluster



FAIRWAY
FX2

Dimensions and tolerances contained on drawings and figures are for reference only and may not encompass total allowable and approved dimensional variations.

| | | | | | |
|--|--|--------------------------------------|--------|----------|------|
| DOCUMENT TITLE: | | Glass Baluster Composite Railing Kit | | | |
| <i>This drawing is the property of Fairway Vinyl Systems. Any hard copy of this drawing may not be current. This document and or images contained within may not be reproduced in publication format without express written consent of Fairway Vinyl Systems. Drawings may not be to scale.</i> | | FX2 COMPOSITE RAILING | | | |
| | | UOM | REF# | REV | |
| | | SCALE | SHEET# | DRAWN BY | DATE |
| | | v1.0 | | | |
| | | 1 of 1 | | 1/21/10 | |

FX2 COMPOSITE RAILING

5208 Wilshire Park Drive – Hudson OH





