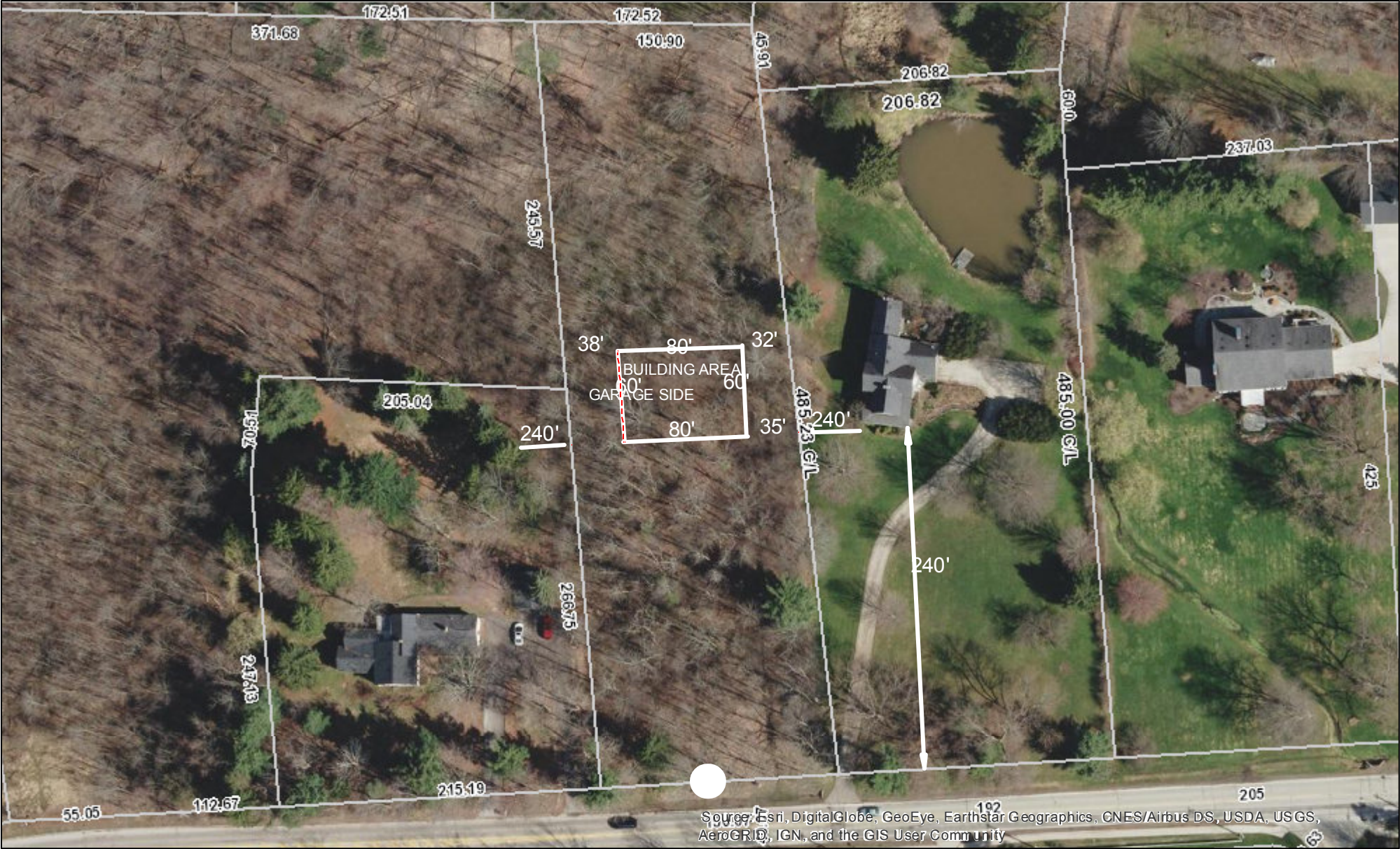


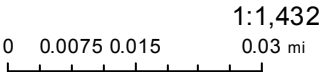
Preliminary Site Plan Messners



February 23, 2018

Override ✓

Override 4 ☐ Parcels



Disclaimer:
The data displayed in this map are provided as a public service for informational purposes only. The County of Summit and its GIS staff, with in reason have made every effort to assure the accuracy of the map and the data provided. However, we make no guarantees regarding the correctness, accuracy or completeness of the data. No information on this site is intended to serve as professional (e.g., legal, medical, surveying, engineering, etc.) advice. Such information should be sought from a professional licensed to practice such profession in the State of Ohio. Moreover, the County of Summit and its GIS staff do not assume responsibility arising from the misuse or misinterpretations of the data. Users of the map accept all risk.

Preliminary Site Plan Messners with Driveway



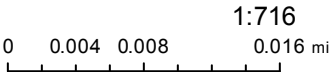
February 23, 2018

Override 4

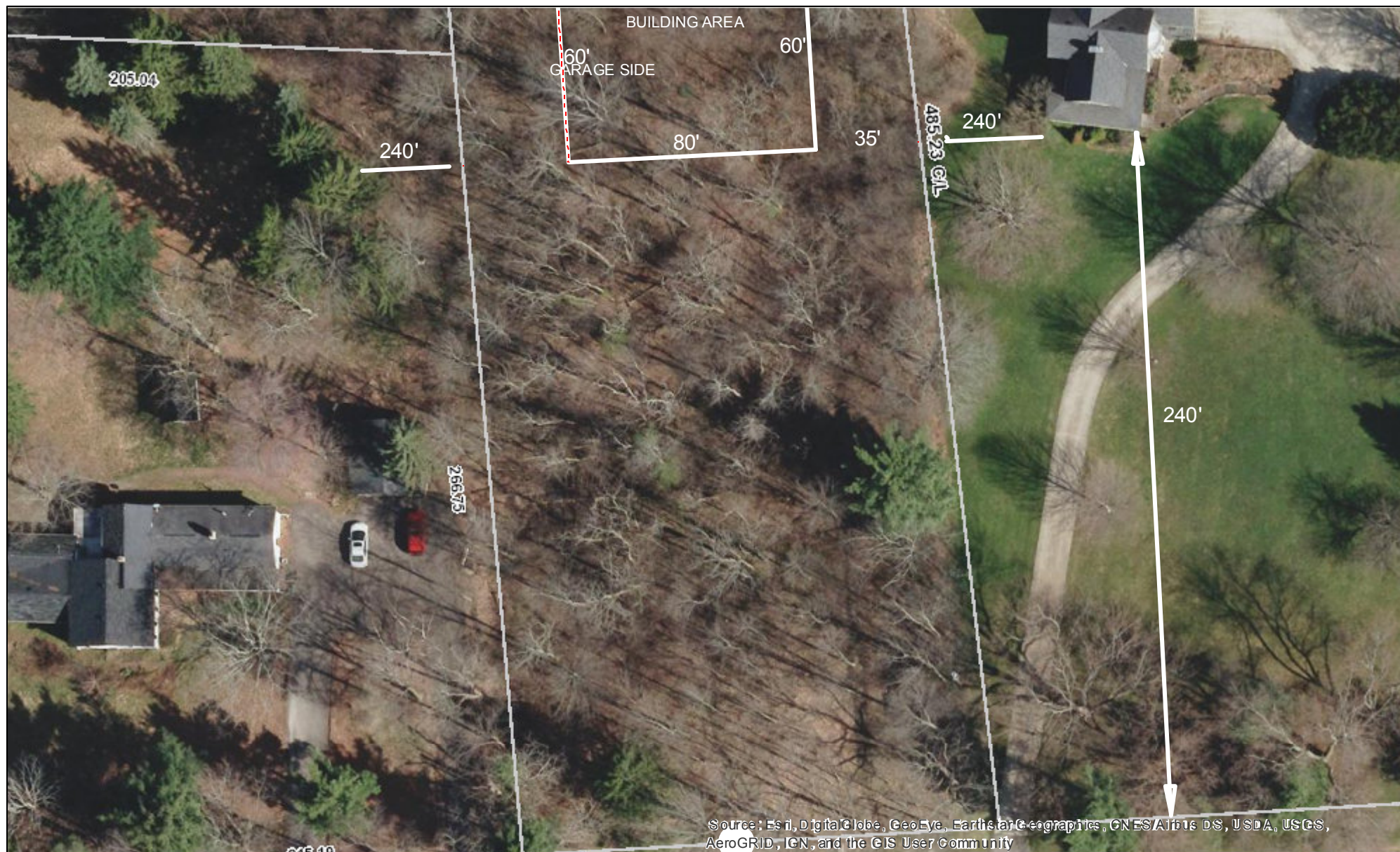
Override 4



Parcels



Disclaimer:
The data displayed in this map are provided as a public service for informational purposes only. The County of Summit and its GIS staff, with in reason have made every effort to assure the accuracy of the map and the data provided. However, we make no guarantee regarding the correctness, accuracy or completeness of the data. No information on this site is intended to serve as professional advice, legal, medical, surveying, engineering, etc.) advice. Such information should be sought from a professional licensed to practice such profession in the State of Ohio. Moreover, the County of Summit and its GIS staff do not assume responsibility arising from the misuse or misinterpretations of the data. Users of the map accept all risk.



Override ✓

Override 4 ☐ Parcels

1:716

0 0.004 0.008 0.016 mi



Disclaimer:
The data displayed in this map are provided as a public service for informational purposes only. The County of Summit and its GIS staff, in no way, have made every effort to assure the accuracy of the data. The data are provided "as is" without any warranty regarding the correctness, accuracy or completeness of the data. No information on this site is intended to serve as professional (i.e. legal, medical, surveying, engineering, etc.) advice. Such information should be sought from a professional licensed to practice such profession in the State of Ohio. Moreover, the County of Summit and its GIS staff do not assume responsibility arising from the misuse or misinterpretations of the data. Users of