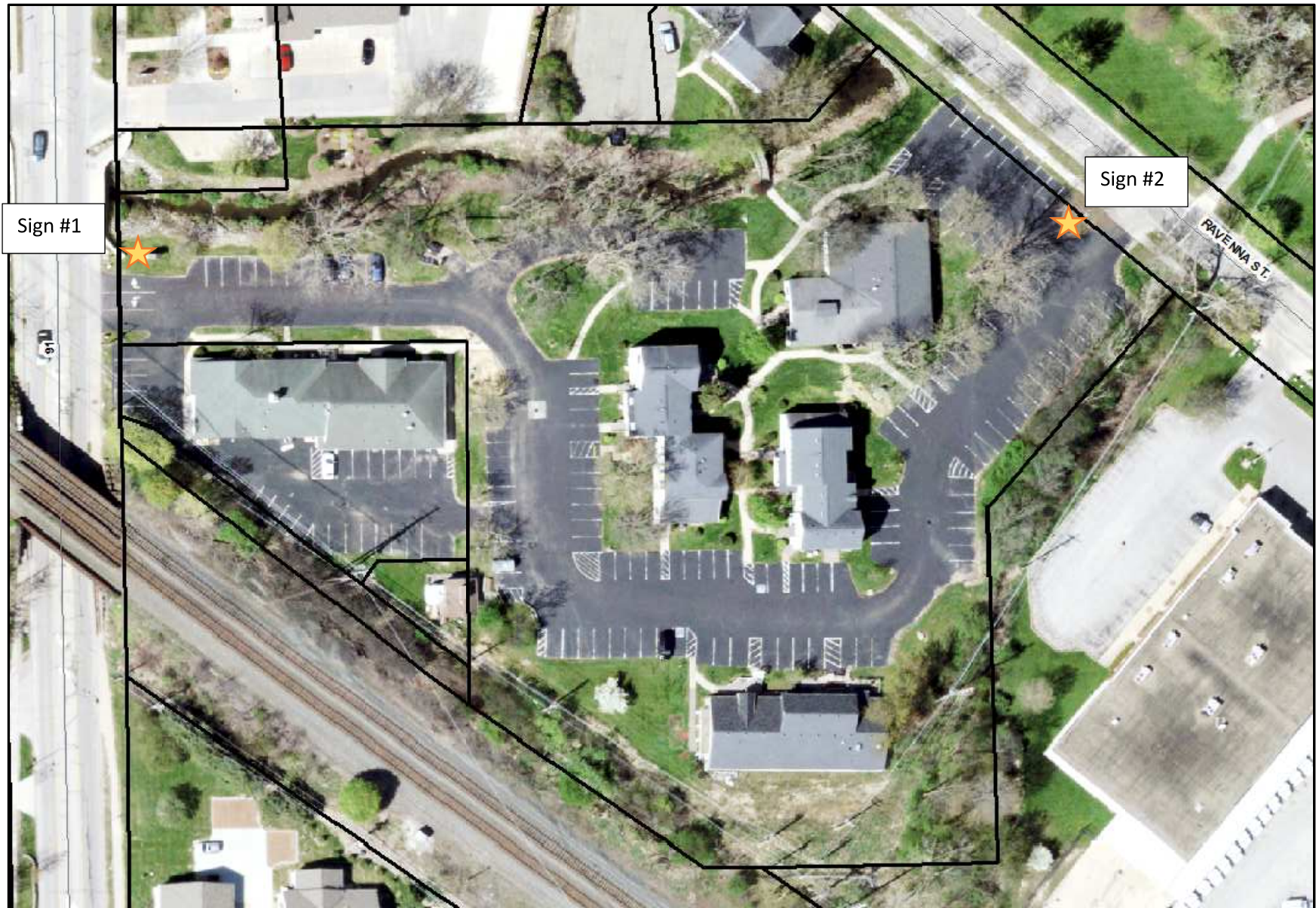


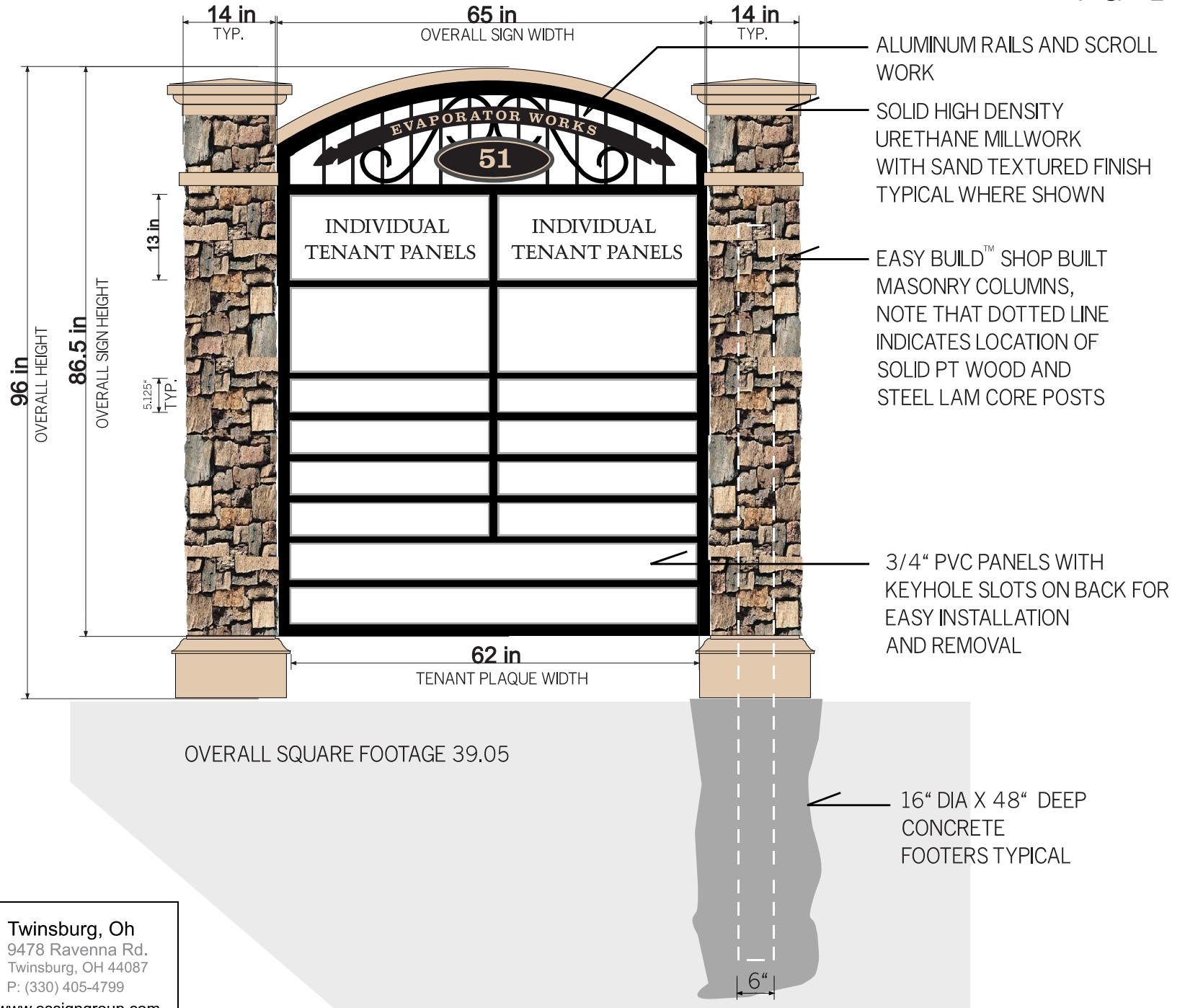
# Site Plan



# FRONT AND BACK ELEVATION: DOUBLE SIDED MONUMENT SIGN FOR EVAPORATOR WORKS MAIN ST. ENTRANCE

Project # E1014  
Main Street entrance

PG-1

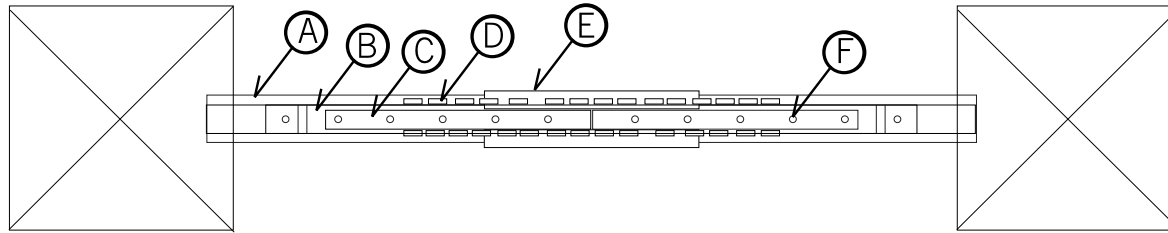




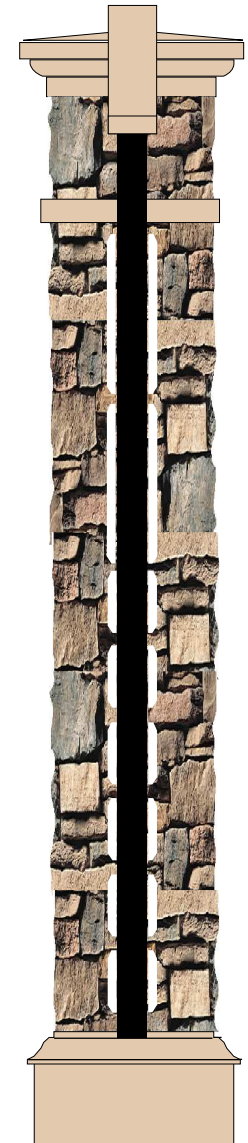
PLAN VIEW AND SIDE ELEVATION FOR: DOUBLE SIDED MONUMENT SIGN FOR EVAPORATOR WORKS HUDSON OHIO

Project # E1014  
Main Street entrance

PG-2



- A—HIGH DENSITY URETHANE CAP AT TOP OF SIGN
- B—SIGN BACKER AND EVAPORATOR WORKS AND MAIN SIGN PANEL 2.5" THICK, NOTE THAT MAIN SIGN PANEL IS COMPRISED OF A 2" THICK ALUMINUM FRAME AND 1/4" ALUMINUM COMPOSITE SIGN FACES FRONT AND BACK
- C—ALUMINUM SCROLLS MADE FROM 1/2" X 1-1/2" ALUMINUM PLATE
- D—1/2" HIGH DENSITY URETHANE LETTERS STUD MOUNTED TO EVAPORATOR WORKS SIGN PANEL (B)
- E—1/1/2" HIGH DENSITY URETHANE ADDRESS PANELS WITH V-CARVED NUMBERS
- F—5/8" ALUMINUM RAILS THROUGH SIGN BACKER EVAPORATOR WORKS PANEL AND SCROLLS



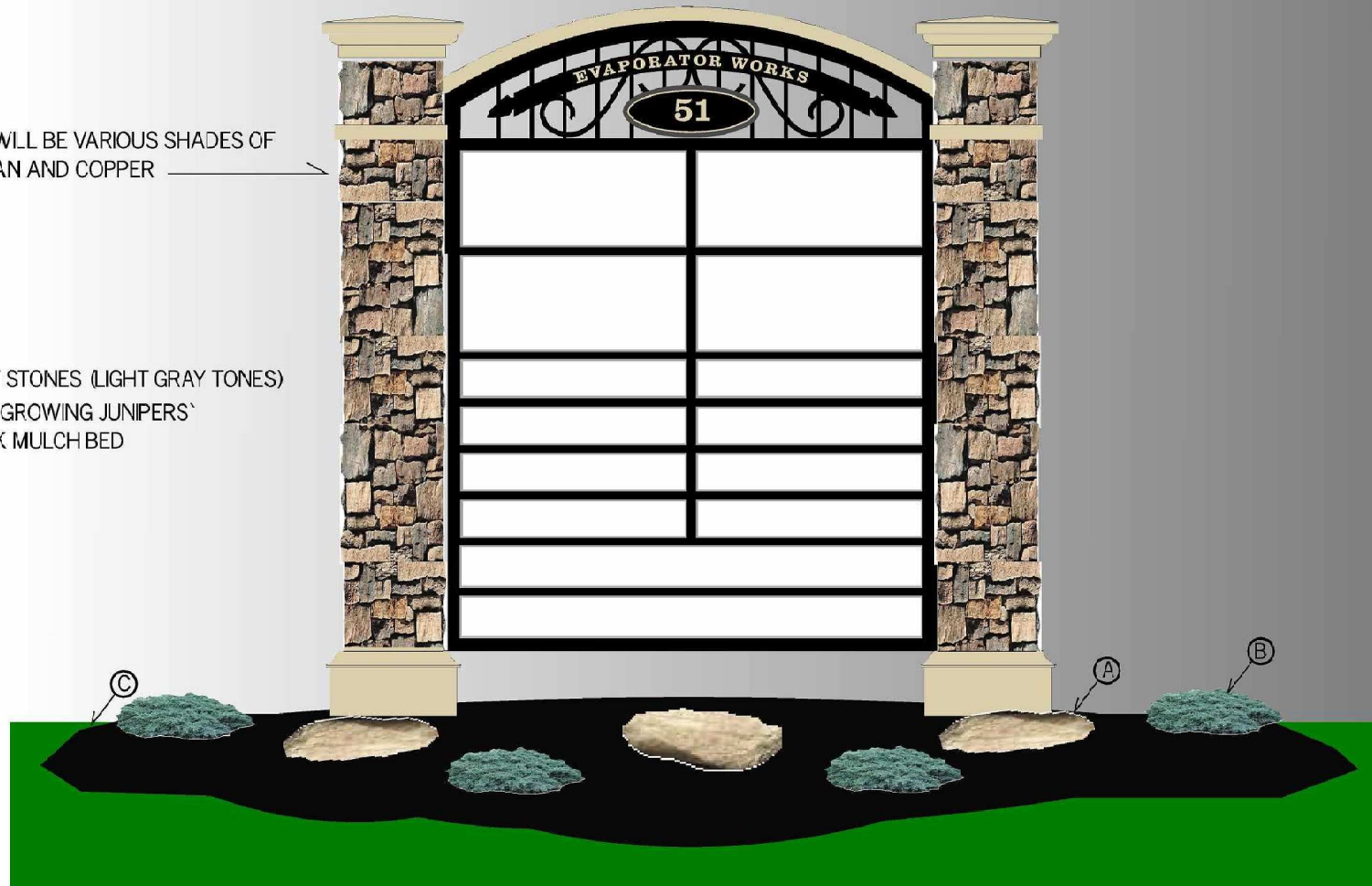
SIDE ELEVATION

# LANDSCAPE PLAN FOR DOUBLE SIDED MONUMENT (EVAPORATOR WORKS HUDSON OHIO)

Project # E1014  
Main Street entrance

STONE WILL BE VARIOUS SHADES OF  
BEIGE TAN AND COPPER

A—FLAT STONES (LIGHT GRAY TONES)  
B—LOW GROWING JUNIPERS`  
C—DARK MULCH BED



HC 24 PITTSFIELD BLUFF  
ALL TAN COLOR SHOWN IS

ALL PANELS WHITE WITH LIGHT GRAY TRIM  
ALL FRAME AND ORNAMENTAL COMPONENTS BLACK,  
NUMBERS AND EVAPORATOR LETTERS PITTSFIELD BLUFF

**EasySign®**  
*Custom Shop*

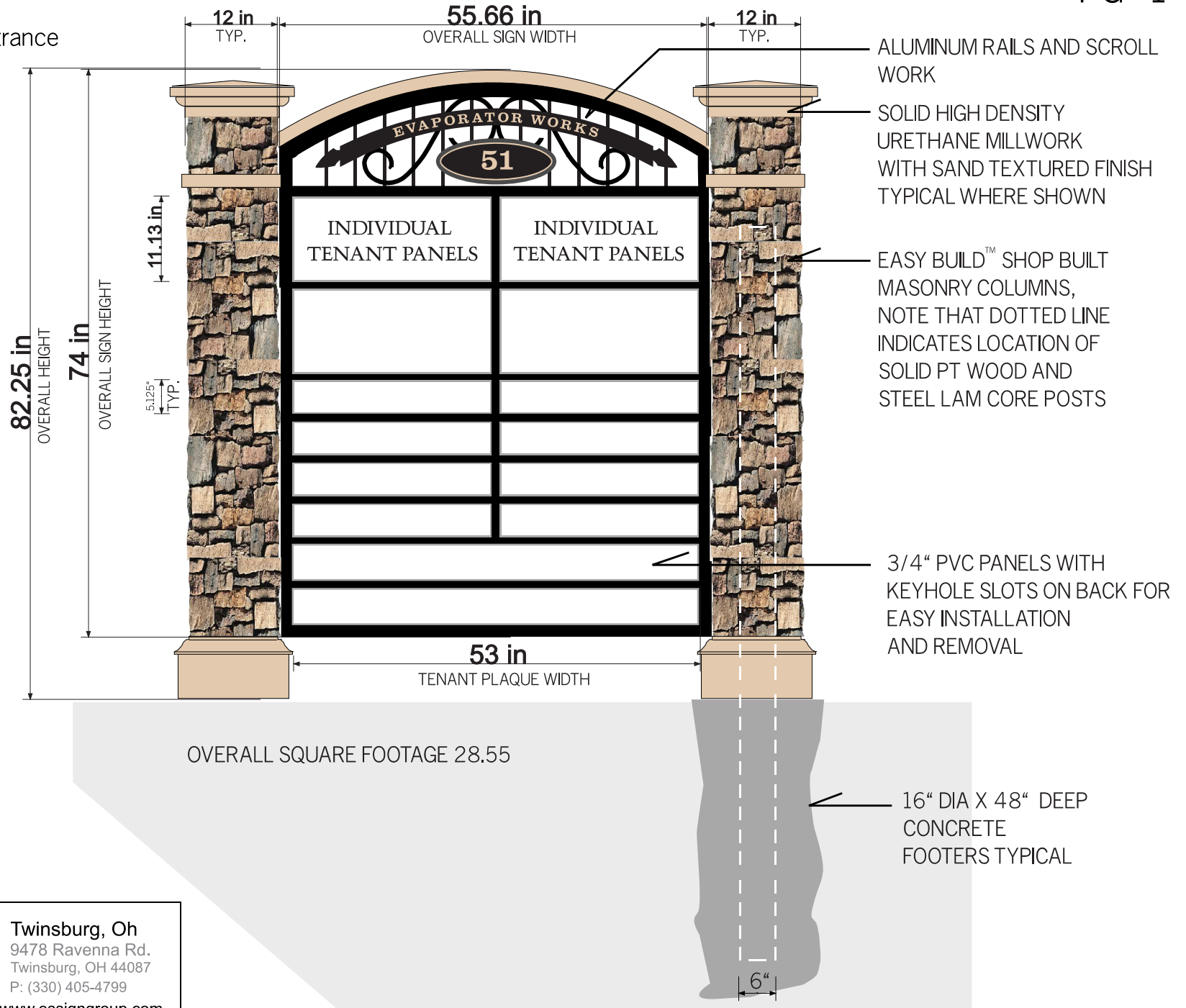
Twinsburg, Oh  
9478 Ravenna Rd.  
Twinsburg, OH 44087  
P: (330) 405-4799  
[www.essigngroup.com](http://www.essigngroup.com)



# FRONT AND BACK ELEVATION: DOUBLE SIDED MONUMENT SIGN FOR EVAPORATOR WORKS RAVENNA ST. ENTRANCE

PG-1

Project # E1014  
Ravenna Street entrance



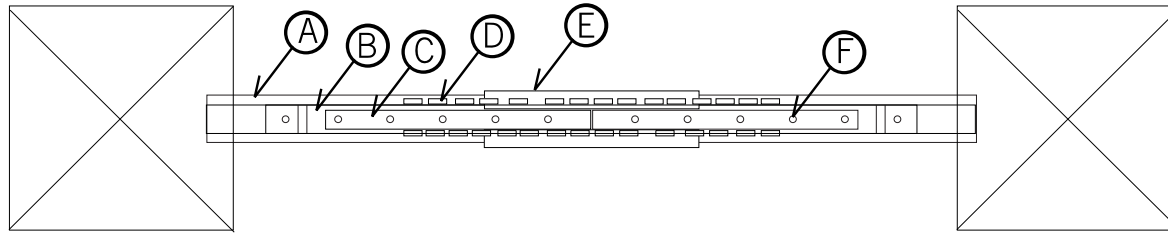
**EasySign®**  
*Custom Shop*

Twinsburg, Oh  
9478 Ravenna Rd.  
Twinsburg, OH 44087  
P: (330) 405-4799  
www.essigngroup.com

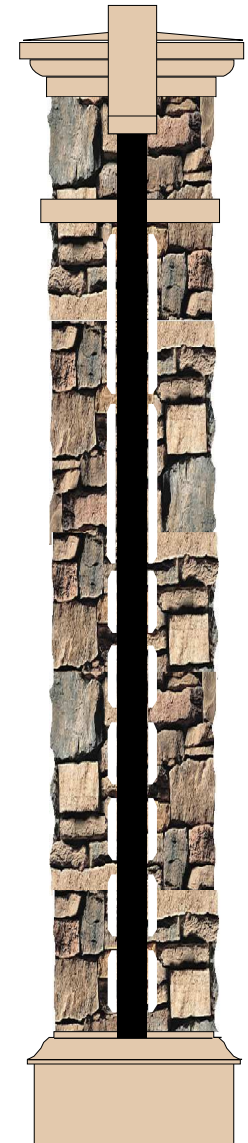
Project # E1014

Ravenna Street entrance

PG-2



- A—HIGH DENSITY URETHANE CAP AT TOP OF SIGN
- B—SIGN BACKER AND EVAPORATOR WORKS AND MAIN SIGN PANEL 2" THICK, NOTE THAT MAIN SIGN PANEL IS COMPRISED OF A 2" THICK ALUMINUM FRAME AND 1/4" ALUMINUM COMPOSITE SIGN FACES FRONT AND BACK
- C—ALUMINUM SCROLLS MADE FROM 3/8" X 1-1/4" ALUMINUM PLATE
- D—1/2" HIGH DENSITY URETHANE LETTERS STUD MOUNTED TO EVAPORATOR WORKS SIGN PANEL (B)
- E—1-1/2" HIGH DENSITY URETHANE ADDRESS PANELS WITH V-CARVED NUMBERS
- F—1/2" ALUMINUM RAILS THROUGH SIGN BACKER EVAPORATOR WORKS PANEL AND SCROLLS



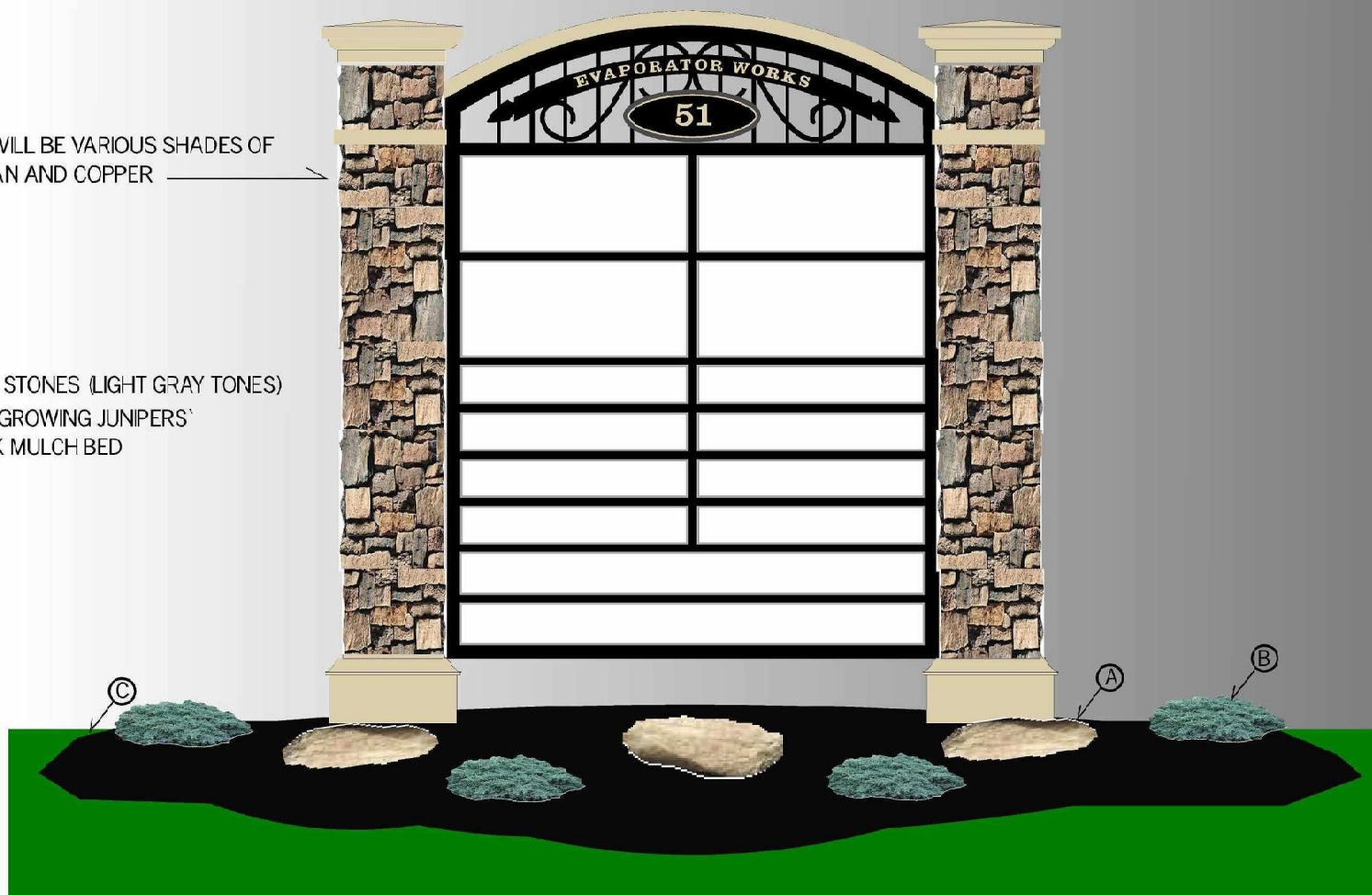
SIDE ELEVATION

# LANDSCAPE PLAN FOR DOUBLE SIDED MONUMENT (EVAPORATOR WORKS HUDSON OHIO)

Project # E1014  
Ravenna Street entrance

STONE WILL BE VARIOUS SHADES OF  
BEIGE TAN AND COPPER

A-FLAT STONES (LIGHT GRAY TONES)  
B-LOW GROWING JUNIPERS  
C-DARK MULCH BED



HC 24 PITTSFIELD BLUFF  
ALL TAN COLOR SHOWN IS

ALL PANELS WHITE WITH LIGHT GRAY TRIM  
ALL FRAME AND ORNAMENTAL COMPONENTS BLACK,  
NUMBERS AND EVAPORATOR LETTERS PITTSFIELD BLUFF

**EasySign®**  
*Custom Shop*

Twinsburg, Oh  
9478 Ravenna Rd.  
Twinsburg, OH 44087  
P: (330) 405-4799  
[www.essigngroup.com](http://www.essigngroup.com)



Location of Main Street Sign





## Location of Ravenna Street Sign







WINDS OF CHANGE

Winds of Change

THE FUSSY

DRY CLEANING

ALTERATIONS











