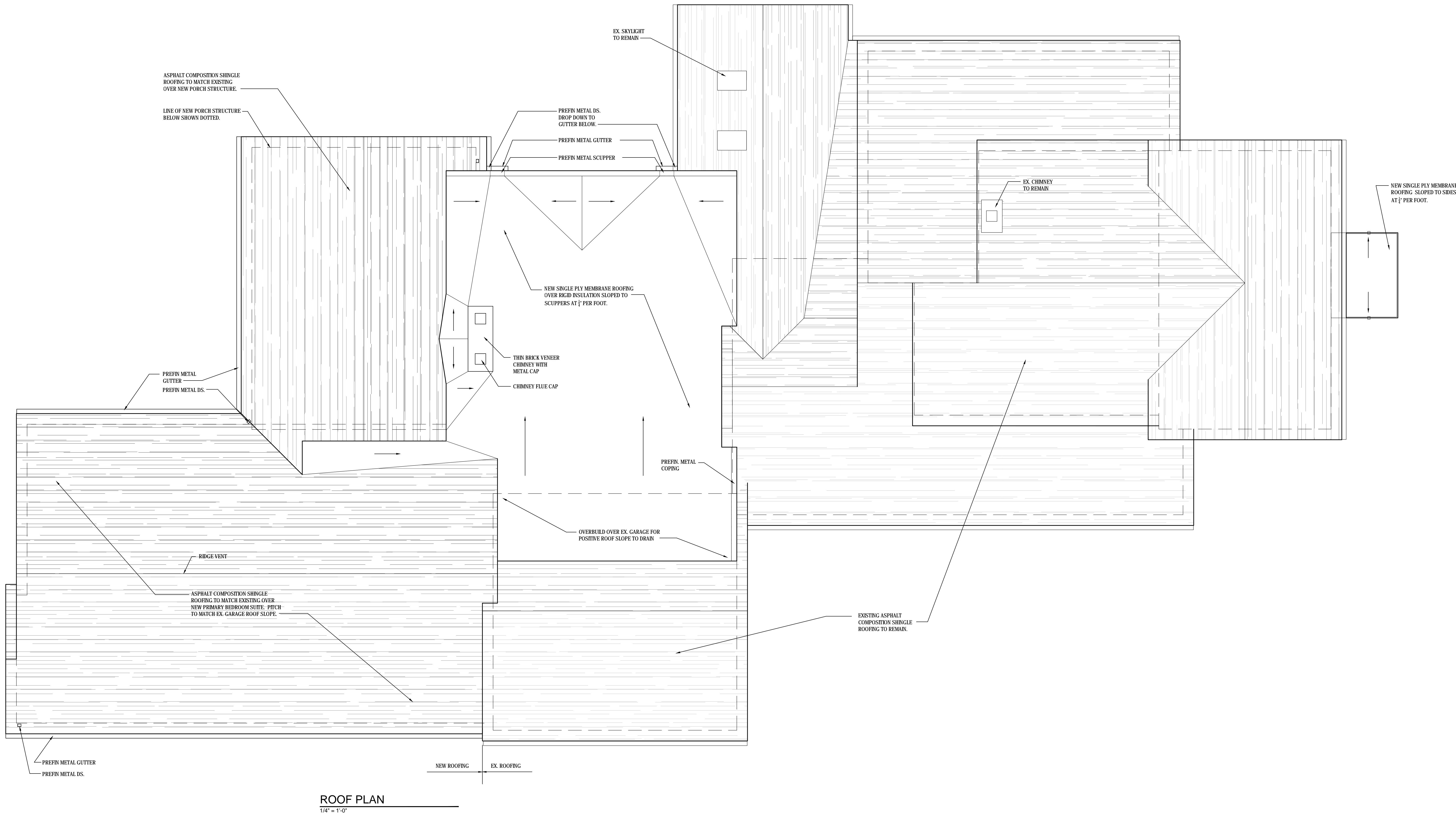


1. Users of this plan are advised that this plan is a preliminary design and is not intended to be used for construction. It is the user's responsibility to verify the accuracy of the information provided and to obtain all necessary permits and approvals from the appropriate authorities. The user acknowledges that the use of this plan for any purpose other than that intended by the designer is at the user's sole risk and without liability to the designer.



ADDITION & RENOVATION of  
**PRIVATE RESIDENCE**  
136 HUDSON STREET  
HUDSON, OHIO 44236

Project No.:	22164
Drawn By:	FGM
Date	Issue
1-29-2024	AHBR submission
2-13-2024	update per city review
3-20-2024	update per city review

A1.2a

ROOF PLAN

Design and construction documents are instruments of service and are given in confidence and remain the property of Onyx Creative. The use of this design and these construction documents for purposes other than the specific project named herein is strictly prohibited without expressed written consent of Onyx Creative.









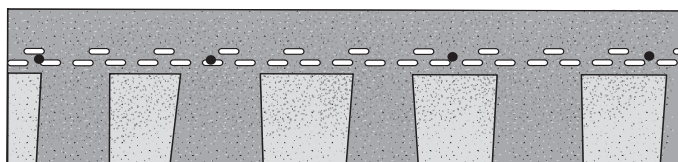


# Pinnacle® Pristine

High Performance Meets Lasting Beauty



**Pristine Appearance. Protected Appeal.** Pinnacle® Pristine architectural shingles provide stunning color that lasts while protecting homeowners' roofs from black streaks caused by algae with 3M™ Scotchgard™ Protector.



**Length:** 42" / 1066.8 mm  
**Width:** 14" / 355.6 mm

**Exposure:** 6" / 152.4 mm  
**Shingles Per Bundle:** 18-20



For maximum protection and warranty coverage, install an Atlas Signature Select® Roofing System with components designed and backed by an Atlas warranty.

## FEATURES

Available In 16 Colors  
3M™ Scotchgard™ Protector  
Class 3 Impact Rating  
130 mph Wind Limited Warranty\*\*  
FASTAC® Double Sealant Lines  
Atlas Lifetime\* Algae Resistance  
Limited Warranty  
Lifetime Limited Warranty\*\*  
Atlas Signature Select® Eligible<sup>1</sup>

## ASTM

D7158, Class H Wind Resistance,  
Passed at 150 mph  
D6381, Uplift Resistance  
D3018, Type 1  
D3161, Class F, Tested at 110 mph  
D3462, As Manufactured  
E108, Class A Fire Resistance

## UL

790, Class A Fire Resistance  
2218, Class 3 Impact Resistance  
2390, Class H Wind Resistance

## CODES AND COMPLIANCES

Meets AC438 Criteria  
CAN/CSA-A123.5-M90  
Florida Building Code Approved – FL 16305  
Miami-Dade County Product Control Approved

## SAFETY, STORAGE AND HANDLING

**WARNING:** Roofing application can be dangerous. Observe all precautions and safety guidelines in accordance with proper roofing trade practices. Minimize roof traffic. Perform regular roof maintenance in appropriate weather.

**IMPORTANT PRECAUTIONS:** Store on flat surface. Protect from weather during storage and on job site. Sealant protection tape is placed on back of each shingle and does not have to be removed before applying.

For additional safety, storage, and handling instructions go to: [AtlasRoofing.com/roof-shingles/sds](https://AtlasRoofing.com/roof-shingles/sds)

## INSTALLATION AND SPECIFICATIONS

For warranty and installation instructions go to: [AtlasRoofing.com/roof-shingles/pinnacle-pristine](https://AtlasRoofing.com/roof-shingles/pinnacle-pristine)

For detailed installation and complete 3-part specifications go to: [AtlasRoofing.com/roof-shingles/specifications](https://AtlasRoofing.com/roof-shingles/specifications)

Atlas Roofing Corporation (ATLAS) warrants to you, the original owner of its shingle products, that this product is free from any manufacturing defects that materially affect the performance of your shingle during the Premium Protection Period or that cause leaks for the balance of the applicable warranty period.

\* In order to qualify for the Atlas Lifetime Algae Resistance Limited Warranty against black streaks caused by blue-green algae, installation must include StormMaster® Hip & Ridge shingles, Pro-Cut® Hip & Ridge shingles, or Pro-Cut® High Profile Hip & Ridge shingles featuring Scotchgard™ Protector with Atlas shingles featuring Scotchgard™ Protector.

\*\* Refer to the Atlas Roofing Limited Shingle Warranty for all coverage requirements.

<sup>1</sup> Refer to the Atlas Signature Select® Limited Warranty for all system coverage requirements.

Scotchgard™ and the Scotchgard™ Protector logo, including the plaid design and 3M™ logo, are all trademarks of 3M.



**AtlasRoofing.com** #AtlasProtects

© Copyright 2024, Atlas Roofing Corporation ATL-246874-00 6/24

# Pinnacle® Pristine Colors



**Black Shadow**



**Coastal Granite**



**Hearthstone**



**Pewter**



**Summer Storm**



**Oyster Shell**



**Copper Canyon**



**Heatherblend**



**Burnt Hickory**



**Majestic Shake**



**Weathered Wood**



**Weathered Shadow\***



**Morning Harvest**



**Tan Mist\***



**Woodland Green**



**Sunset\***

\*Limited regional availability. Please contact your local supplier.



## LIFETIME

limited warranty

Comprehensive warranty coverage for black streaks caused by algae, damage from high winds, and manufacturer defects.



## 130MPH

wind resistance

Beauty meets protection with the help of the Atlas 130 mph Wind Limited Warranty\*\*.



## Scotchgard™

shingle protector

Maintain your roof's appearance for years by resisting the black streaks caused by algae.



## HP42®

technology

These bigger 42" shingles mean a faster install, quicker clean up and less waste—plus big savings on materials and labor.



## CLASS 3

impact resistance

UL 2218 Class 3 impact resistance rating offers protection against harsh weather conditions, keeping your home safe and secure.



To provide homeowners with the most accurate representation of color options, several photo scans and house shots were used under various lighting conditions. Variations in lighting illustrate the color gradients on asphalt shingle roofs.

Color blends vary from shingle to shingle. Before installation, consult with your contractor and request to view the actual shingles being installed on your roof to ensure confidence in your final color selection.