

AURORA STREET 60'

T.B.M.
SAN. MANHOLE
TOP=1108.94

BASIS OF BEARING:
BEARINGS ARE REFERENCED TO GRID NORTH OF THE OHIO STATE PLANE COORDINATE SYSTEM NORTH ZONE NAD83 (2011) DATUM AND ARE USED TO DENOTE ANGLES ONLY.

LEGEND

- = PIN FOUND
- ◇ = MON. FOUND
- = No. 5 REBAR W/CAP L R CULP 7834 TO BE SET
- ⊕ = GAS METER
- ⊖ = ELECTRIC METER
- ⊗ = A/C UNIT
- ← PROP. / EXIST.
- [Pattern] = EX. CONC./FLAGSTONE PAVEMENT
- [Pattern] = PROP. FLAGSTONE WALKWAY
- [Pattern] = PROP. ADDITIONAL DRIVEWAY

AREA OF LOT = 15,015 S.F.
MAX. ALLOWABLE IMPERVIOUS SURFACE = 6,006 S.F.
TOTAL IMPERVIOUS SURFACE AREA = 4,315 S.F.
PERCENT OF IMPERVIOUS SURFACE AREA = 28.7%
ADDITIONAL IMPERVIOUS SURFACE AREA = 1,610 S.F.
PERCENT OF PROPOSED TOTAL IMPERVIOUS AREA = 39.5%

Owner:
Scott A. & Laura A. Honnold
PPN 32-00891
Rec. No. 55548647



TOPOGRAPHIC SURVEY
130 AURORA STREET
LOT 3, BLOCK 1 - DAY ALLOTMENT
PPN 32-00891
CITY OF HUDSON
SUMMIT COUNTY, OHIO
JULY, 2025 SCALE: 1" = 20'

Board of Education of the
Hudson City School District
PPN 32-04161
Doc. No. 56431465



I HEREBY CERTIFY THAT I HAVE SURVEYED THE LAND SHOWN ON THIS PLAT AND THAT THIS PLAT IS A CORRECT REPRESENTATION OF THE LAND SHOWN HEREON.

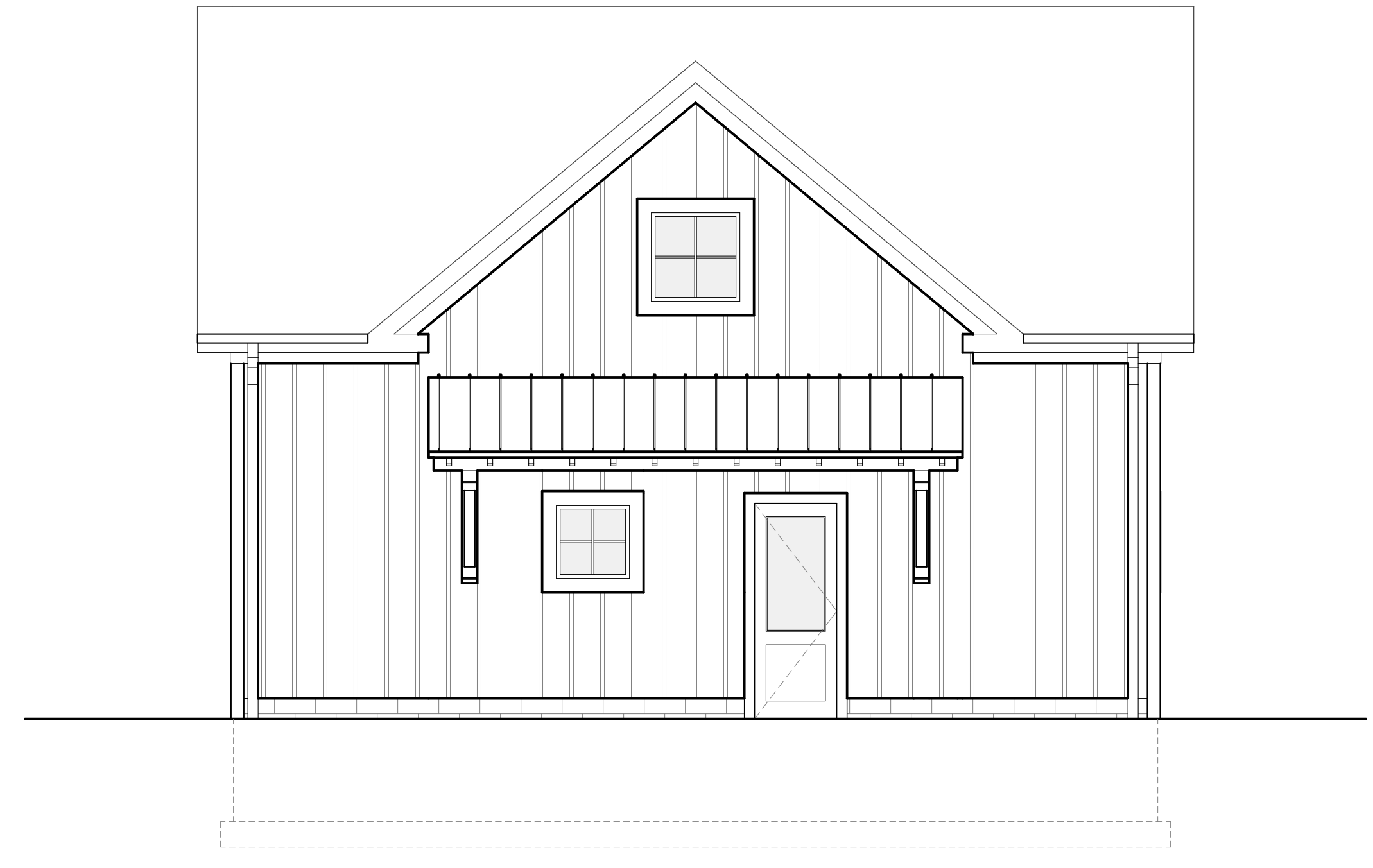
[Signature] 7/11/2025
LAURI R. CULP, P.S. 7834
CULP SURVEYING, LLC
3853 RIDGEVIEW DRIVE
RICHFIELD, OHIO 44286
330-815-3765

**PROGRESS
NOT FOR
CONSTRUCTION**
9/8/2025

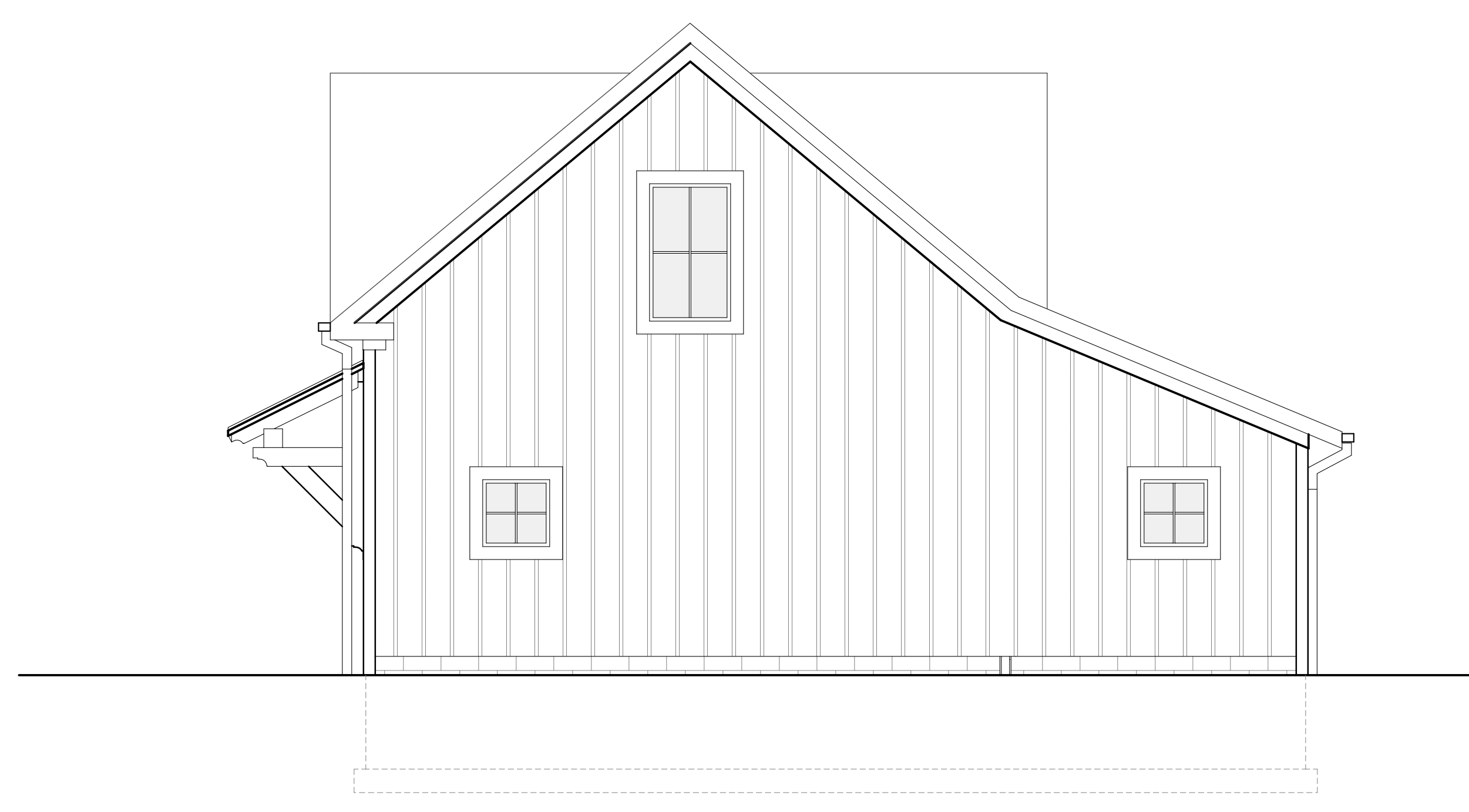
PROJECT TEAM:
P PENINSULA
ARCHITECTS



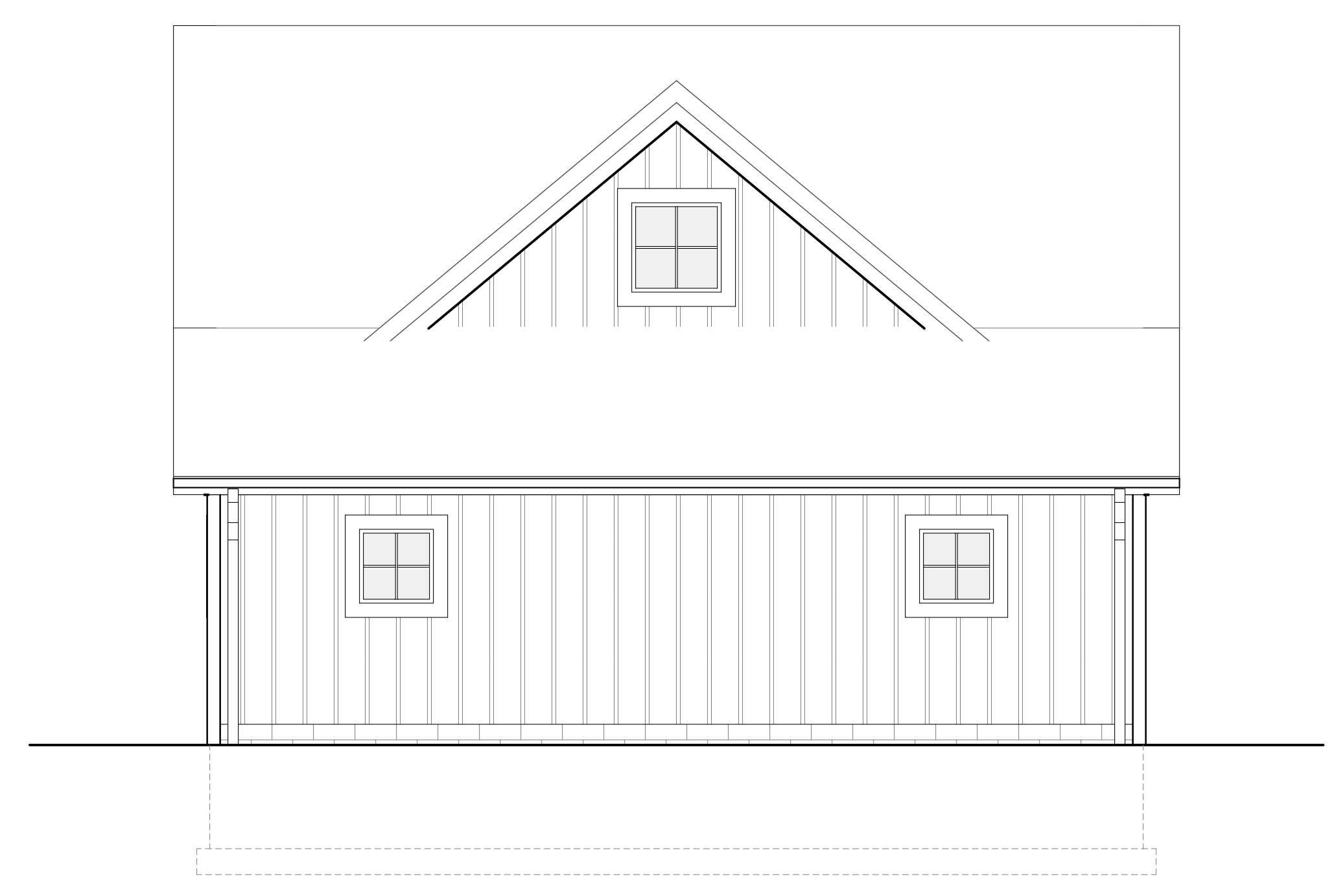
1 FRONT ELEVATION
SCALE: 1/4" = 1'-0"



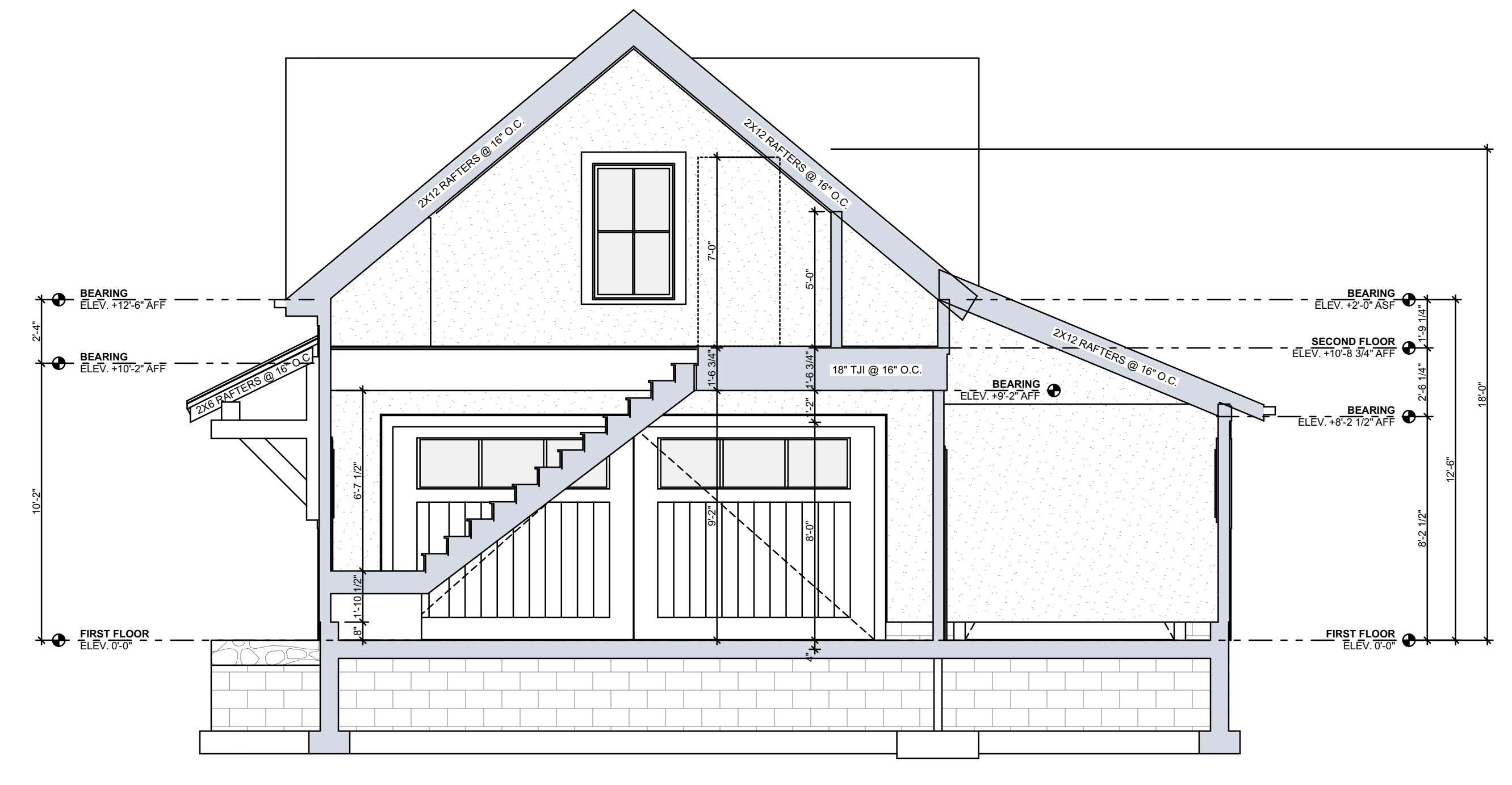
2 SIDE ELEVATION - SOUTH
SCALE: 1/4" = 1'-0"



3 REAR ELEVATION
SCALE: 1/4" = 1'-0"



4 SIDE ELEVATION - NORTH
SCALE: 1/4" = 1'-0"



5 SCHEMATIC BUILDING SECTION
SCALE: 1/4" = 1'-0"

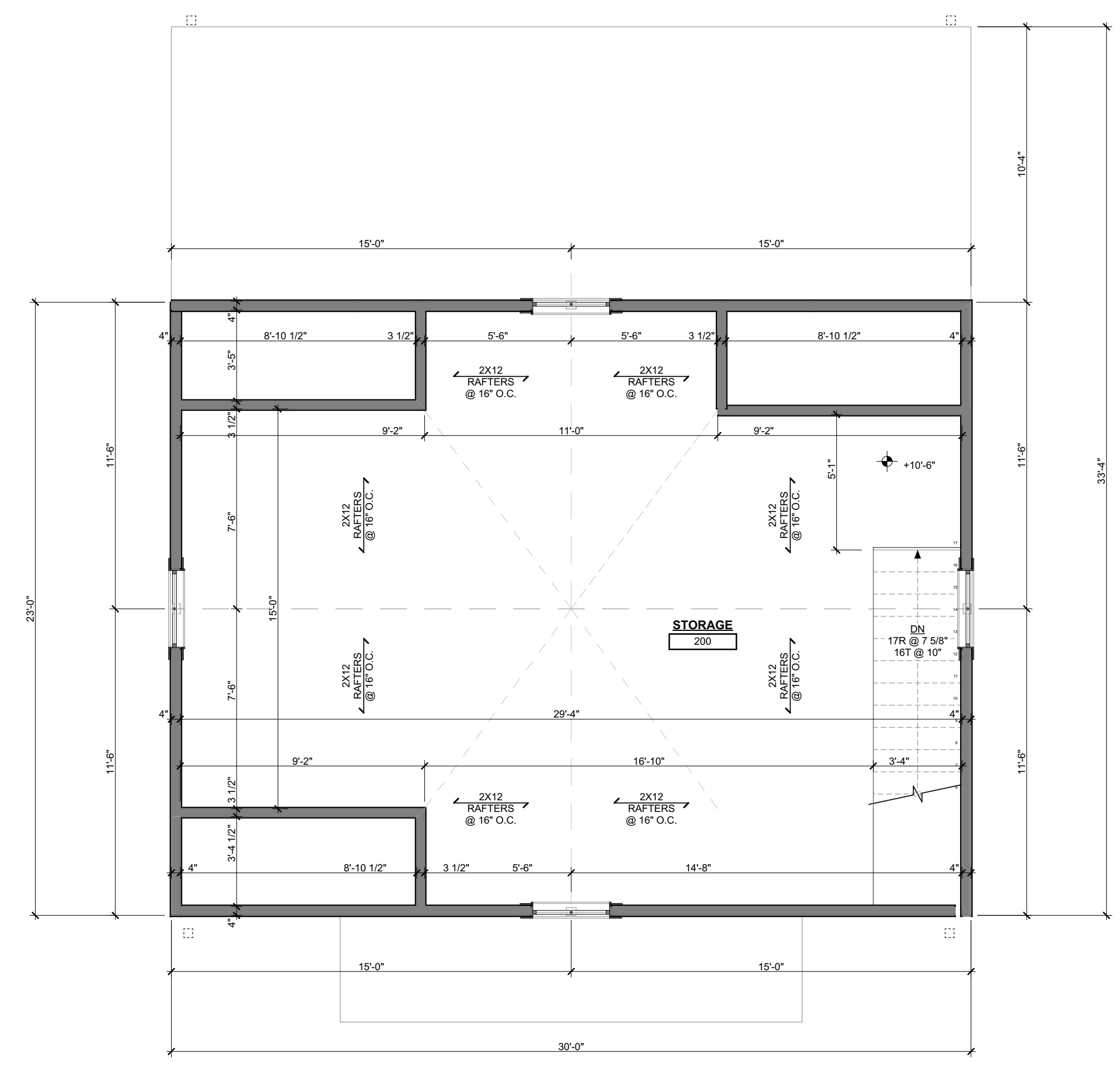
HONNOLD OUTBUILDING
130 AURORA STREET, HUDSON, OHIO 44236

PROJECT #: 2524

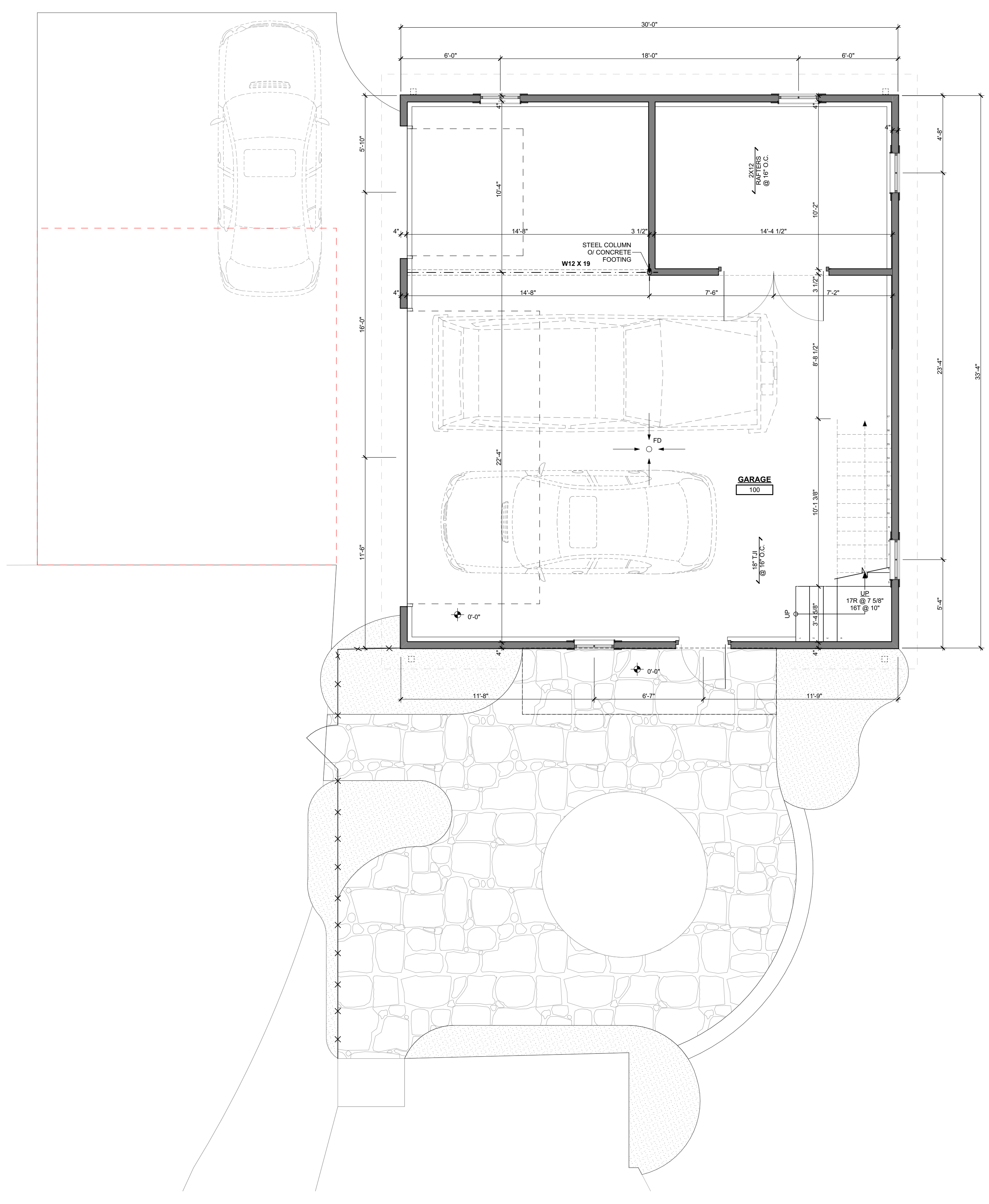
ISSUE:	
CLIENT MEETING	07-17-2025
SCHEMATIC DESIGN	07-30-2025
SD2	08-12-2025

**PROGRESS
NOT FOR
CONSTRUCTION**
9/8/2025

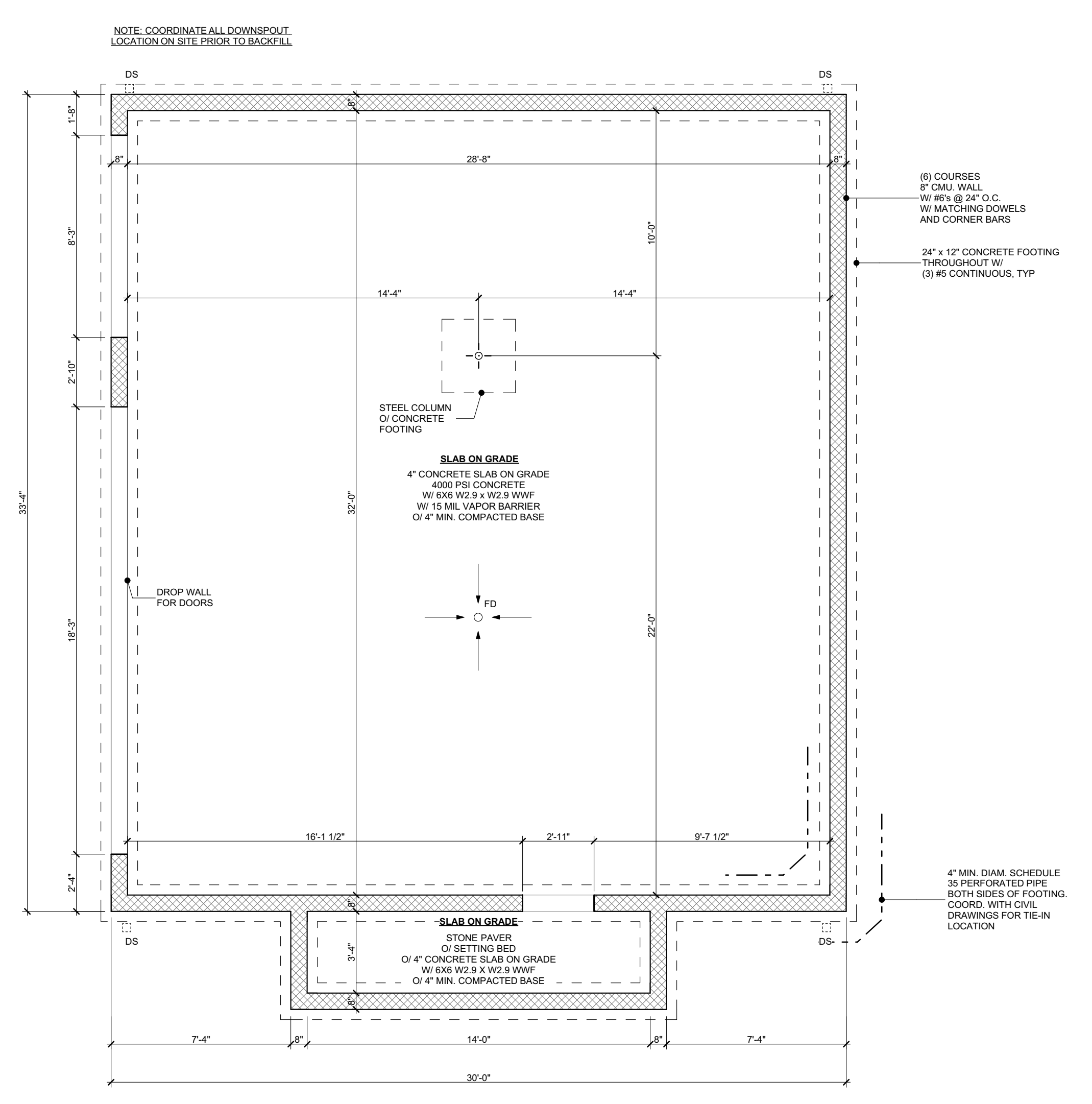
PROJECT TEAM:
P PENINSULA
ARCHITECTS



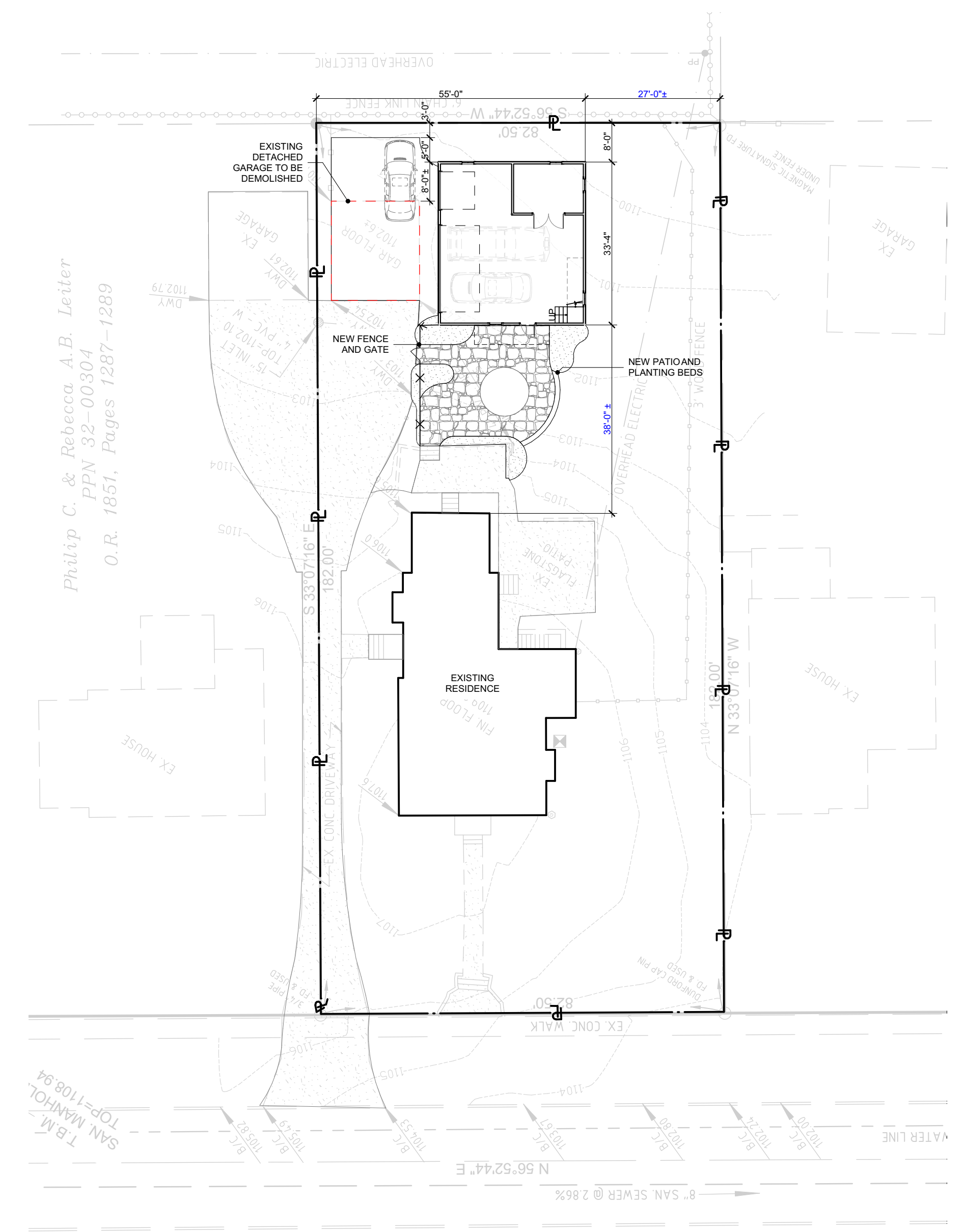
SECOND FLOOR PLAN
SCALE: 1/4" = 1'-0"



FIRST FLOOR PLAN
SCALE: 1/4" = 1'-0"



FOUNDATION
SCALE: 1/4" = 1'-0"



SITE PLAN
SCALE: 1" = 20'

SQUARE FOOTAGE	
FLOOR	AREA
FIRST FLOOR	1,000
	1,000 SF

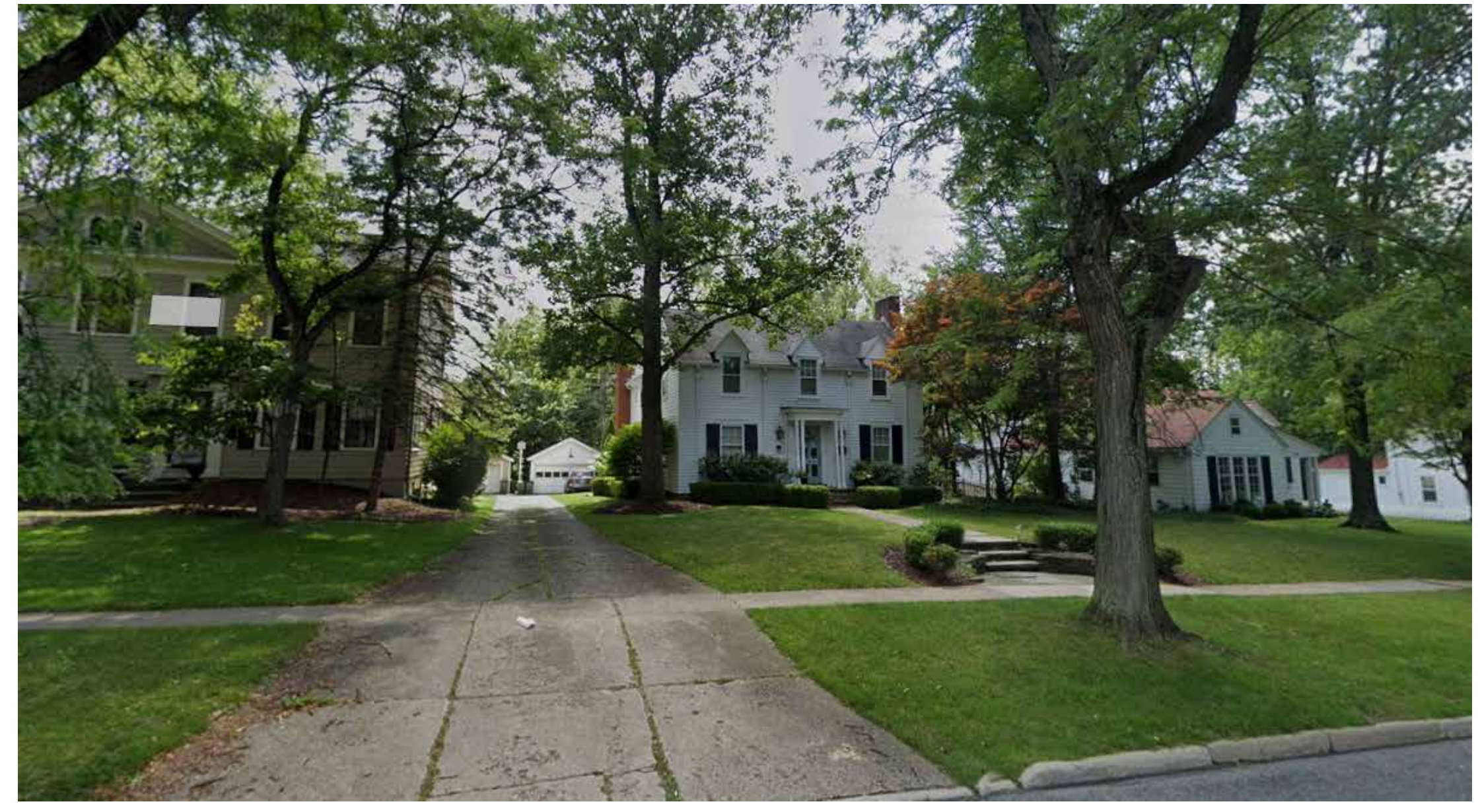
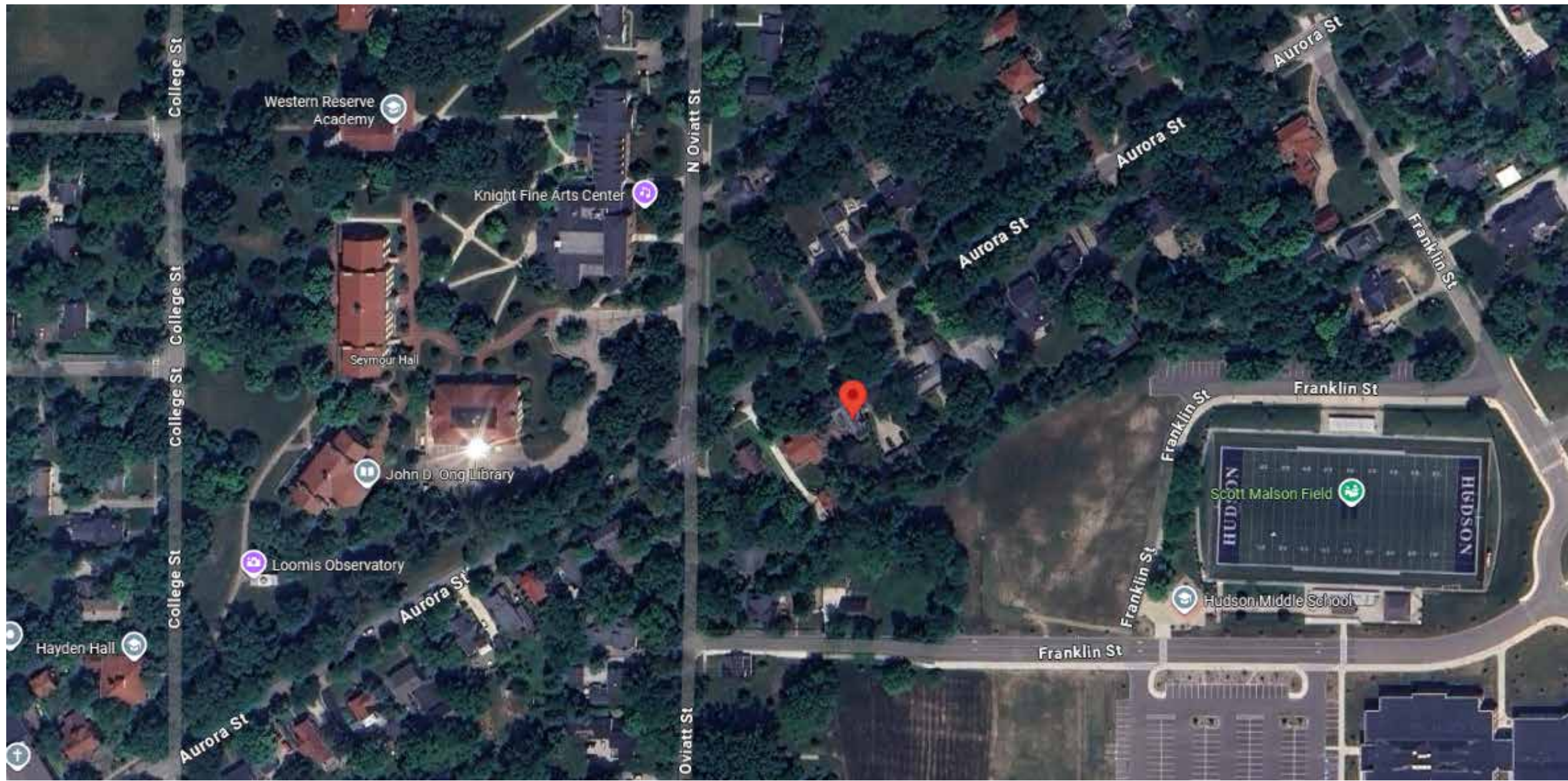
HONNOLD OUTBUILDING
130 AURORA STREET, HUDSON, OHIO 44236

PROJECT # 2524

ISSUE:	
CLIENT MEETING	07-17-2025
SCHEMATIC DESIGN	07-30-2025
SD2	08-12-2025

SCHEMATIC PLANS

A1.00
© 2025 Peninsula Architects LTD



SITE AND CONTEXT



PROPOSED LOCATION



130 AURORA ST.

Peninsula



EXISTING STRUCTURE



EXISTING RESIDENCE (FOR REFERENCE)

130 AURORA ST.





HONNOLD OUTBUILDING

Peninsula



HONNOLD OUTBUILDING

Peninsula



HONNOLD OUTBUILDING



HONNOLD OUTBUILDING

Peninsula



HONNOLD OUTBUILDING

Peninsula

130 AURORA ST

HONNOLD OUTBUILDING

CITY OF HUDSON AHRB SUBMISSION MATERIALS

PROPOSED PRODUCT DATA SHEETS

CONTENTS

SIDING - JAMES HARDIE BOARD AND BATTEN

ROOFING - OWENS CORNING SUPREME 3-TAB SHINGLES

WINDOWS - PELLA RESERVE TRADITIONAL (ALUMINUM-CLAD WOOD)

DOORS - PELLA ENRY DOOR (FIBERGLASS AND STEEL ENTRY DOOR)

GARAGE - CLOPAY CANYON RIDGE CARRIAGE HOUSE



Primed for Paint product samples are not available. Please check with your contractor or local dealer for availability in your area.

Hardie® Panel

Find your style

Your home is a blank canvas. Experiment with a variety of Hardie® Panel siding styles, textures, and stunning colors featuring our ColorPlus® Technology finishes to create your masterpiece.

Select your texture



Select Cedarmill®



Smooth



Stucco



Sierra 8

Select your color collection

Statement
Collection®

Primed for
Paint

🔍 Did not find the color you're looking for? [Click here.](#)

Primed for Paint offers unlimited color opportunities for your home's exterior. Primed and ready for field painting, it's a durable, high-performance canvas for your vision.



SUPREME®

Shingles | Tejas



Desert Tan¹



TOTAL PROTECTION. TOTAL CONFIDENCE.
PROTECCIÓN TOTAL. CONFIANZA TOTAL.™

 **SEAL.**
SELLAR.

 **DEFEND.**
DEFENDER.

 **BREATHE.**
RESPIRAR.

SEE CHART AND MAP FOR COLOR AVAILABILITY

CONSULTE LA TABLA Y EL MAPA PARA CONOCER LA DISPONIBILIDAD DE COLORES



Autumn Brown¹



Brownwood¹



Desert Tan¹



Driftwood¹



Estate Gray¹



Onyx Black¹



Shasta White¹

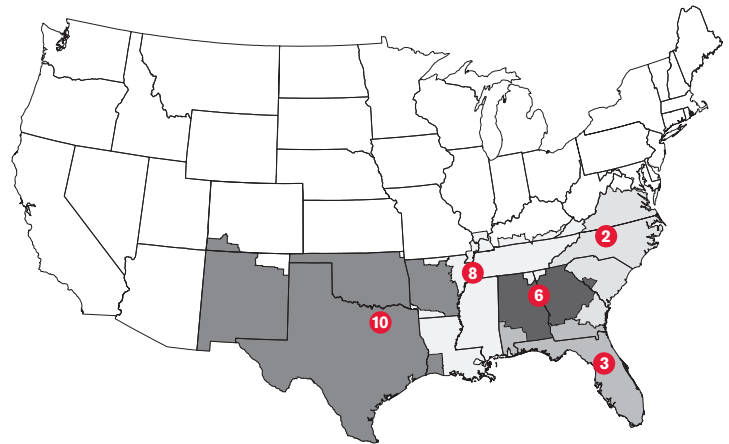


Teak¹

		2	3	6	8	10
Autumn Brown ¹		●	●	●		●
Brownwood ¹					●	●
Desert Tan ¹		●	●	●	●	●
Driftwood ¹		●	●	●	●	●
Estate Gray ¹		●	●	●	●	●
Onyx Black ¹		●	●	●	●	●
Shasta White ¹						●
Teak ¹						●

REGIONAL COLOR AVAILABILITY MAP

MAPA REGIONAL DE DISPONIBILIDAD DE COLORES



COLOR DISCLAIMER

As color experts, we know getting the shingle color right is a big part of any roofing purchase. Due to printing color variations, in addition to viewing shingle literature, we suggest you request an actual shingle sample to see how it will appear on your home and with your home's exterior elements in various natural lighting conditions. Lastly, we recommend you verify your color choice by seeing it installed on an actual home; your roofing contractor or supplier can provide a sample and may be able to direct you to a local installation.

DESCARGO DE RESPONSABILIDAD SOBRE LOS COLORES

En tanto que especialistas en color, sabemos que obtener el color de teja perfecto es una parte importante en toda compra de techos. Debido a las variaciones en los colores impresos, además de mirar folletos de tejas, le sugerimos que solicite una muestra de la teja para ver como se verá en su hogar y con los elementos externos de la vivienda bajo distintas condiciones de luz natural. Finalmente, le recomendamos que para verificar su elección de colores, vea cómo lucen las tejas ya instaladas en una vivienda; su contratista de techos o su proveedor le pueden dar una muestra e incluso indicarle dónde ver un techo ya instalado.



TOTAL PROTECTION SIMPLIFIED®

It takes more than just shingles to protect a home. It takes an integrated system of components and layers designed to perform in three critical areas. The Owens Corning® Total Protection Roofing System® gives you the assurance that all of your Owens Corning roofing components are working together to help increase the performance of your roof.

PROTECCIÓN TOTAL SIMPLIFICADA®

Se necesita más que simplemente tejas para proteger su vivienda. Se necesita un sistema integral de componentes y capas diseñadas para desempeñarse en tres áreas críticas. El Total Protection Roofing System® de Owens Corning® le garantiza que todos sus componentes para cubiertas de Owens Corning funcionan en conjunto para mejorar el desempeño de su techo.



Helps create a waterproof barrier

Ayuda a crear una barrera impermeable



Helps protect against nature's elements

Protege contra los elementos climáticos



For balanced attic ventilation

Para una ventilación equilibrada del ático

Hip & Ridge shingles
Tejas de limatesa y cumbrera



Laminate shingles
Tejas laminadas



Starter shingles
Tejas de arranque



Self-adhered ice & water barrier
Barrera autoadhesiva contra el hielo y el agua



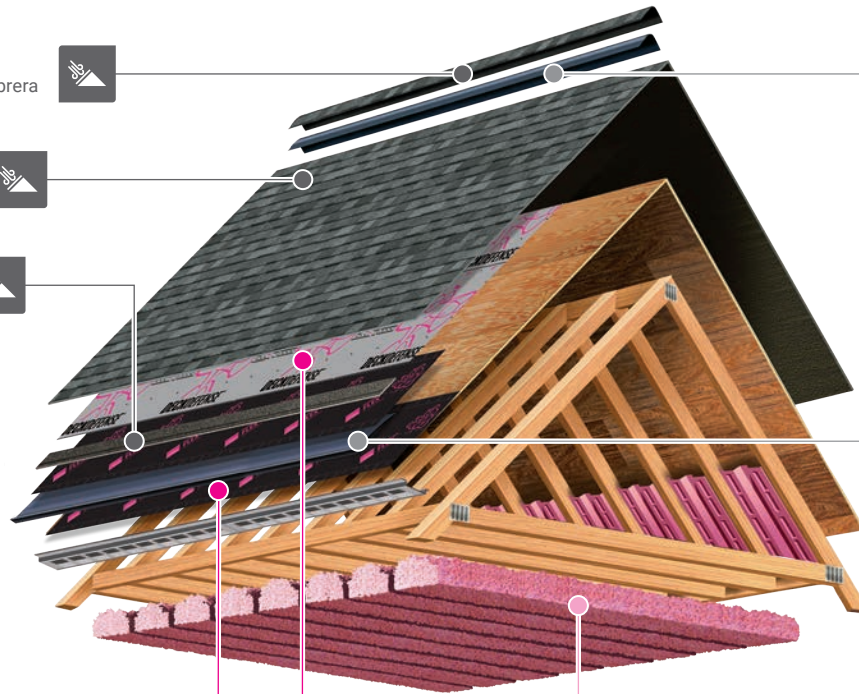
Synthetic underlayment
Membrana impermeabilizante sintética



Exhaust vents
Salidas de aire



Intake vents®
Entradas de aire®



+ COMFORT. CONFORT.

Add comfort and energy performance
Más confort y desempeño energético

PINK® Fiberglas™ blown-in attic insulation
Aislamiento para áticos PINK® Fiberglas™ aplicado por impulsión

® For intake ventilation, use approved Owens Corning® Vent Sure® InFlow ventilation or soffit ventilation. Do not use both intake ventilation options in one roofing application. See install instructions for more details.

® Para la ventilación de entrada, utilice la ventilación aprobada por Owens Corning® Vent Sure® InFlow o ventilación de sofito. No utilice ambas opciones de ventilación de entrada en una misma aplicación para techos. Consulte las instrucciones de instalación para obtener más detalles.

Supreme® Shingles

Supreme® three-tab shingles—a smart choice when you need to balance curb appeal, weather resistance and value. Supreme shingles come with a 25-Year Limited Warranty*, 60-MPH Wind Resistance Limited Warranty*, and Class A UL Fire Resistance—the industry's highest. StreakGuard® Protection with a 10-year Algae Resistance Limited Warranty*³ is also available on a regional basis. Visit [owenscorning.com/roofing](https://www.owenscorning.com/roofing) to learn more.

Product Attributes

Warranty Length*

25-Year Limited

Wind Resistance Limited Warranty*

60-MPH

Algae Resistance Limited Warranty*

10 Years

TRU PROtection® Non-Prorated Limited Warranty* Period

5 Years

Product Specifications

Size	12" x 36"
Application Exposure	5"
Shingles per Bundle	Not less than 26
Average Shingle Count per 3 Bundles	80
Average Coverage per 3 Bundles	100 sq. ft.

Applicable Standards and Codes

ASTM D3462

ASTM D228

ASTM D3018 (Type 1)

ICC-ES AC438#

ASTM D3161 (Class F Wind Resistance)

ASTM D7158 (Class H Wind Resistance)

ASTM E108/UL 790 (Class A Fire Resistance)

PRI ER 1378E01

Florida Product Approval[†]

Miami-Dade County Product Approval²

Tejas Supreme®

Tejas Supreme® de tres lengüetas: una opción inteligente cuando busca un equilibrio entre atractivo exterior, resistencia a la intemperie y buen precio. Las tejas Supreme vienen con garantía limitada de 25 años*, garantía limitada de resistencia al viento de hasta 60 mph* y resistencia al fuego clase A UL, la más alta de la industria. La protección StreakGuard®, con una garantía limitada de resistencia a las algas de 10 años*³ también está disponible según la región. Visite [owenscorning.com/roofing](https://www.owenscorning.com/roofing) si desea obtener más información.

Atributos del producto

Duración de la garantía*

Limitada de 25 años

Garantía limitada de resistencia a vientos*

60 MPH

Garantía limitada de resistencia a las algas*

10 años

Periodo de garantía limitada no prorrateada TRU PROtection**

5 años

Especificaciones del producto

Tamaño	12" x 36"
Exposición de la aplicación	5"
Tejas por paquete	No menos de 26
Tejas en promedio por cada 3 paquetes	80
Cobertura promedio por 3 paquetes	100 pies ²

Normas y códigos aplicables

ASTM D3462

ASTM D228

ASTM D3018 (tipo 1)

ICC-ES AC438#

ASTM D3161 (resistencia al viento clase F)

ASTM D7158 (resistencia al viento clase H)

ASTM E108/UL 790 (resistencia al fuego clase A)

PRI ER 1378E01

Aprobación de productos de Florida[†]

Aprobación de productos del condado de Miami-Dade²

* See actual warranty for complete details, limitations and requirements.

International Code Council Evaluation Services Acceptance Criteria for Alternative Asphalt Shingles.

‡ Applicable only in Service Area 3 (see map).

^ Excludes non-Owens Corning® roofing products such as flashing, fasteners, pipe boots and wood decking.

1 See Color Disclaimer Information on page 2 for additional details.

2 Applies for all areas that recognize a Miami-Dade Notice of Acceptance (NOA).

3 Shingles are algae resistant to help control growth of algae and discoloration.

* Consulte la garantía para conocer los detalles, las limitaciones y los requisitos.

Criterios de aceptación de los servicios de evaluación del Consejo de Código Internacional para tejas de asfalto alternativo.

‡ Aplicable solo en el área de servicio 3 (consulte el mapa).

^ No incluye productos de techado que no sean de Owens Corning®, como tapajuntas, sujetadores, fundas de tuberías y terrazas de madera.

1 Consulte la sección Información de exención de responsabilidad de color en la página 2 para obtener más detalles.

2 Se aplica a todas las áreas que reconocen un aviso de aceptación (Notice of Acceptance, NOA) de Miami-Dade.

3 Las tejas son resistentes a las algas para ayudar a controlar el crecimiento de las algas y la decoloración.



OWENS CORNING ROOFING AND ASPHALT, LLC
ONE OWENS CORNING PARKWAY
TOLEDO, OH 43659 USA

1-800-GET-PINK® | 1-800-438-7465
www.owenscorning.com/roofing

Pub. No. 10013324-O. Printed in U.S.A. December 2024.
THE PINK PANTHER™ & © 1964–2024 Metro-Goldwyn-Mayer Studios Inc.
All Rights Reserved. The color PINK is a registered trademark of Owens Corning.
© 2024 Owens Corning. All Rights Reserved.

(Atlanta, Irving, Jacksonville, Memphis, Savannah)

Publicación N.º 10013324-O. Impreso en los EE.UU. Diciembre de 2024.
THE PINK PANTHER™ & © 1964–2024 Metro-Goldwyn-Mayer Studios Inc.
Todos los derechos reservados. El color PINK es una marca comercial registrada de Owens Corning. © 2024 Owens Corning. Todos los derechos reservados.

(Atlanta, Brookville, Denver, Irving, Jacksonville, Kearny, Medina, Memphis, Minneapolis, Savannah, Summit)

Pella® Reserve™

Traditional Wood & Clad/Wood



Exquisitely designed windows and doors with unparalleled historical detailing.

Double-Hung Interior



Double-Hung Exterior



- Easy-to-learn Pella Steady Set™ interior installation system**
 Pella Steady Set Interior Installation System is a revolutionary, award-winning and safer way to install new construction windows.¹ The simple system is the fastest, most labor efficient wood window installation system with uncompromising quality.² Available on select windows.
- Historical Details**
 Our most historically authentic line of wood windows and patio doors. Featuring through-stile construction, deliberate proportions and intricate profiles. Pella Reserve – Traditional products are the ideal choice for historical renovations and traditional building projects.
- Authentic hardware**
 Complement your project with historically authentic spoon-lock window hardware. Our Antiek casement window hardware is inspired by period furniture to deliver authentic traditional style.
- Architectural interest**
 Pella's Integral Light Technology® grille helps capture the look of true-divided-light without sacrificing energy performance. Further your aesthetic with the putty profile, recreated with historically accurate angles to provide meaningful depth and a realistic shadow. Pella Reserve products offer the industry's deepest sash dimension.
- Virtually unlimited customization**
 If you can dream it, we can build it with our most customizable product line. From extra tall to extra wide, Pella can craft unique windows that complement your aesthetic. Custom sizes, grille patterns and designs, finishes, wood types and glass options are available.
- Tailor-made solutions**
 From preliminary drawings to installation, Pella's expert team of architects, engineers, drafters and consultants can work to deliver custom window and door solutions for your project. Partner with Pella to achieve your unique vision without concessions.
- Intentional innovation**
 The award-winning Integrated Rolscreen® retractable screen preserves aesthetics and the view. It is a double- and single-hung screen that appears when you open the window and rolls away, out of sight, when you close it.
- Durable interiors and extruded aluminum exteriors**
 To help save you time on the jobsite, interior finish options are available in a variety of paints and stains, or primed and ready-to-paint. To complement your exterior aesthetic, choose from our carefully curated color palette or define your own custom color for your project.
- ENERGY STAR® certified³**
 Pella wood products offer energy-efficient options that will meet or exceed ENERGY STAR guidelines in all 50 states.
- Testing beyond requirements**
 All wood products and testing are not created equal. Pella raises the bar on industry standard testing and beyond to deliver long-lasting products and reduced callbacks. Every Pella wood window and door passes 5, on average, quality checks before it arrives on the jobsite.
- Best limited lifetime warranty⁴**
 Pella Reserve products are covered by the best limited lifetime warranty in the business for wood windows and patio doors.⁴

Available in these window and patio door styles:



Special shape windows also available.

^{1,2,3,4} See back cover for disclosures.

Product Specifications

Window & Patio Door Styles	Min. Width	Min. Height	Max. Width	Max. Height	Performance Class & Grade	Performance Values			Frame / Install
						U-Factor	SHGC	STC	
Awning	13-3/4"	13-3/4"	59"	59"	LC30 - CW50	0.25-0.29	0.18-0.47	27-35	Pella Steady Set-, Fold-out Fin, Block Frame, EnduraClad Exterior Trim / Brickmould
Casement	13-3/4"	13-3/4"	47"	108"	R35-CW50	0.25-0.29	0.18-0.47	27-34	
Fixed Casement	10"	10"	144"	144"	R35-CW50	0.25-0.29	0.18-0.47	27-35	
Double-Hung	14"	24-3/8"	48"	96"	CW30-CW50	0.25-0.30	0.19-0.53	28-35	Pocket Replacement
Precision Fit Double-Hung	13-1/2"	23-3/4"	48"	84"	CW40-CW50	0.25-0.31	0.19-0.53	26-30	
Monumental Hung	13-3/4"	24"	72"	144"	LC25-CW50	0.25-0.30	0.17-0.47	29-34	Fold-out Fin, Block Frame, EnduraClad Exterior Trim / Brickmould
In-Swing Hinged Patio Door (Single)	18"	36"	48"	119-1/2"	LC40-LC55	0.25-0.29	0.14-0.40	31-35	
In-Swing Hinged Patio Door (Double)	36"	36"	96"	119-1/2"	LC40-LC55	0.25-0.29	0.14-0.40	31-35	
Out-Swing Hinged Patio Door (Single)	18"	36"	48"	119-1/2"	R50-LC70	0.25-0.30	0.14-0.39	30-36	
Out-Swing Hinged Patio Door (Double)	36"	36"	96"	119-1/2"	R50-LC70	0.25-0.30	0.14-0.39	30-36	
Sliding Patio Door (OX, XO)	60"	74"	120"	120"	R20-LC50	—	—	—	
Sliding Patio Door (OXO)	90"	74"	180"	120"	R20-LC35	—	—	—	
Sliding Patio Door (OXXO)	117"	74"	237"	120"	R20-LC35	—	—	—	
Multi-Slide Patio Door	40-1/4"	50-1/2"	701-5/8"	119-1/2"	R15-LC25 ³	0.30 - 0.36	0.15 - 0.46	31	For more info visit PellaADM.com
Bifold Patio Door	31-3/4"	55-1/2"	312"	119-1/2"	R15-LC25 ³	0.26-0.44	0.13-0.45	—	

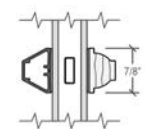
Window sizes available in 1/8" increments

Special sizes available. For more information regarding performance, visit pella.com/performance. For more information regarding frame and installation types, visit PellaADM.com.

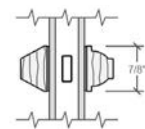
Grilles

Integral Light Technology[®]

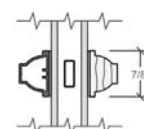
Choose the look of true divided light without sacrificing energy performance.



Putty Glaze Exterior with Ogee Interior⁶
7/8", 1-1/4" or 2"



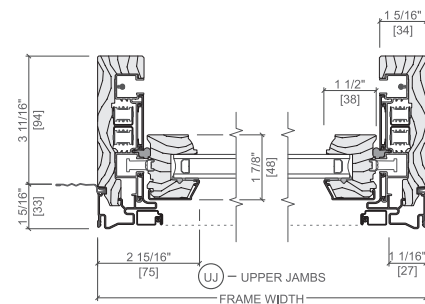
Putty Glaze Exterior with Ogee Interior⁶
7/8", 1-1/4" or 2"



Ogee Exterior with Ogee Interior⁶
7/8", 1-1/4" or 2"

Cross Sections

Cross Sections



Optional Fold-out Installation Fin

The double-hung cross sections provide visual reference to the historic putty exterior profile and traditional, beveled Ogee interior that add architectural interest to your project.

^{3,4} See back cover for disclosures.

Window Hardware

Classic Collection

Get a timeless look with authentic styles in classic finishes.



Fold-away Crank
Antiek



Spoon-Style Lock

Finishes:



Champagne White Brown Matte Black



Oil-Rubbed Bronze Satin Nickel Satin Brass

Rustic Collection

Create a distinct and charming look with distressed finishes.



Fold-away Crank
Antiek



Spoon-Style Lock

Finishes:



Distressed Bronze Distressed Nickel

Essential Collection

Select from popular designs and finishes to suit every style.

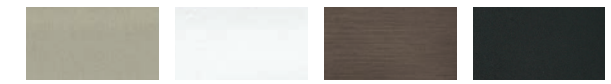


Fold-away Crank



Cam-Action Lock

Finishes:



Champagne White Brown Matte Black



Oil-Rubbed Bronze Satin Nickel Satin Brass

Patio Door Hardware

Classic Collection

Choose timeless pieces, created in collaboration with Baldwin[®] Hardware, for a look that will never go out of style.

BALDWIN



Hinged & Bifold Patio Door Handle
Virago



Sliding & Multi-Slide Patio Door Handle
Ambrose



Multi-Slide Patio Door Handle^{5,6}

Finishes:



Matte Black Oil-Rubbed Bronze Satin Nickel Satin Brass

Essential Collection

Elevate your style and transform a home with elegant selections.



Hinged & Bifold Patio Door Handle
Standard



Sliding Patio Door Handle
Standard

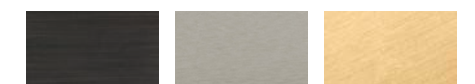


Multi-Slide Patio Door Handle^{5,6}

Finishes:



Champagne White Brown Matte Black



Oil-Rubbed Bronze Satin Nickel Satin Brass

Additional hardware collections available. Visit PellaADM.com for more information.

^{5,6} See back cover for disclosures.

Colors

Wood Types

Choose the wood species that best complements your project's interior.

Custom solutions:



Pine



Douglas Fir



Mahogany



White Oak



Red Oak



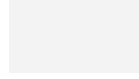
Cherry



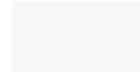
Maple

Prefinished Pine Interior Colors

Custom interior finishes, unfinished or primed and ready-to-paint are also available.



White



Bright White



Linen White



Natural Stain



Golden Oak Stain



Early American Stain



Provincial Stain



Dark Mahogany Stain



Charcoal Stain



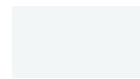
Black Stain

Extruded Aluminum-Clad Exterior Colors

Our low-maintenance EnduraClad® exterior finish resists fading. Take durability one step further with EnduraClad Plus which also resists chalking and corrosion.⁷



Black



White



Brown



Fossil



Iron Ore



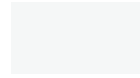
Portobello



Putty



Almond



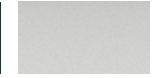
Classic White



Brick Red



Hartford Green



Pearl Gray



Soft Linen



Satin Steel



Matte Gray



Wolf Gray



Spice Red



Sage



Frost Blue



Blue Ash



Custom colors are also available.

Screens

Rolscreen®

Rolscreen soft-closing retractable screens roll out of sight when not in use. Available on casement windows. .

Integrated Rolscreen®

A concealed retractable screen that moves seamlessly with the sash of a single- or double-hung window—appearing when you open the window and rolling out of sight when you close it.

TuffScreen® by Phifer®

The TuffScreen® is 2.5x stronger than a standard screen.⁸ It is tear, puncture and damage resistant, standing up to pets, children and harsh weather. Available on sliding patio doors.

⁸All trademarks are property of their respective owners

Flat

InView™ screens are clearer than conventional screens and come standard.



The Best Limited Lifetime Warranty in the Industry

We know your reputation matters and you stake your reputation on quality, dependable products. That's why we have the best limited lifetime warranty in the industry for wood windows and patio doors.²

¹ Some Pella products may not meet ENERGY STAR® guidelines in Canada. For more information, contact your local Pella sales representative or go to energystar.gc.ca.

² Based on comparing written limited warranties of leading national wood window and wood patio door brands. See written limited warranty for details, including exceptions and limitations, at pella.com/warranty or contact Pella Customer Service.

³ Ratings are contingent on product configurations.

⁴ Color-matched to your product's interior and exterior color.

⁵ Flush multi-slide handle is a Pella exclusive design.

⁶ Flush multi-slide handle is not available in Champagne.

⁷ EnduraClad Plus protective finish is not available with all colors. See your local Pella sales representative for availability.

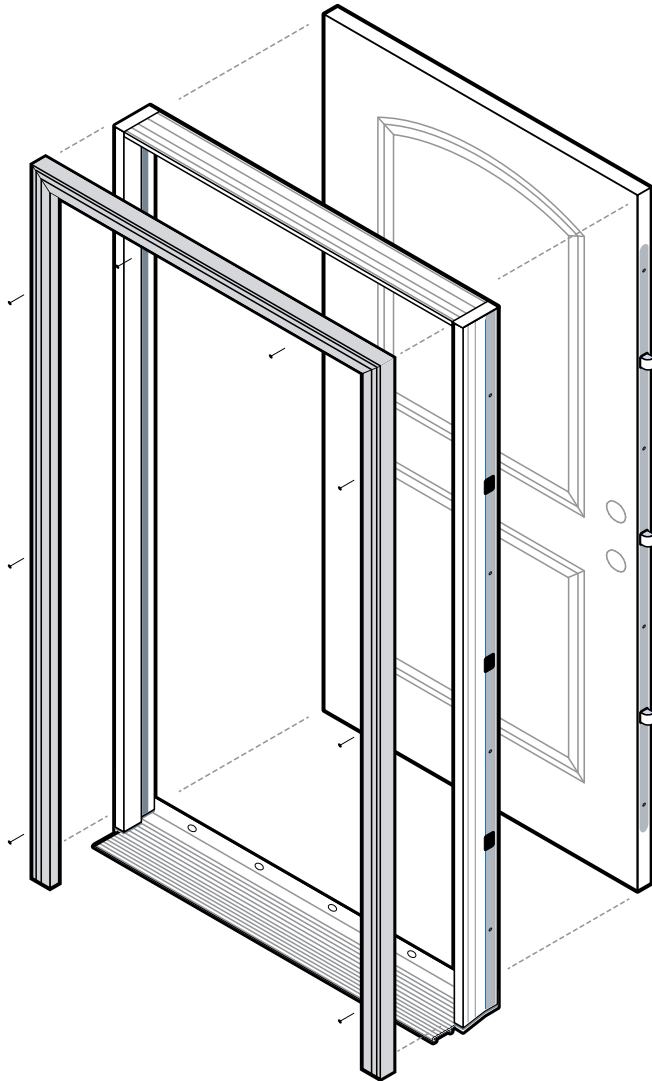
⁸ Based on the composite results of a 5-panel strength analysis comparing TuffScreen and standard screening.

Pella® Entry Doors



#1 preferred entry door brand by homeowners.*

A curated collection of fiberglass and steel entry doors delivering dependable performance and inspired designs.



Rendering shown with all available options.

- **Whole home solution**
Trust Pella to be your whole project solution with our complete offering of windows, patio doors and entry doors. Support is available where and when you need it with trusted national, regional and local partners in sales and installation.
- **Innovative security sensors**
Our integrated security sensors are factory-installed and integrated directly into the entry door system. Preserving the beauty and warranty of a Pella entry door while increasing peace of mind, they can be used with the free Pella Insynctive® app and integrate with many home security systems.
- **Premium hardware**
Pella has partnered with Baldwin®, the #1 premium hardware brand to create three stunning collections to complement your project's style, architecture and coordinating window hardware.
- **Variety of panel materials**
Available in fiberglass and steel, our collection of entry doors can meet the needs of your design vision, while providing exceptional performance and energy efficiency.
- **Rot-resistant frame system**
Pella's complete panel and frame system for fiberglass and steel entry doors is made of a rigid closed cell poly-fiber material and is engineered to be exceptionally energy efficient. It does not absorb moisture and is rot resistant, reducing potential callbacks.
- **Energy-efficient panels**
Our fiberglass and steel entry doors feature solid polyurethane foam-filled panels to increase energy efficiency and ensure years of exceptional performance.
- **Desired, on-trend colors**
Select from a curated color collection, created in collaboration with the team at Sherwin-Williams DesignHouse for Performance Coatings. They are designed to complement Pella windows and patio doors and coordinate with other exterior finishes, including siding, roofing, stone and shingles.
- **Most popular styles**
With the most popular panel styles, we've made the selection process for your next project faster and easier. With a panel offering that fits every home style, you can help fulfill your customer's desired aesthetic.
- **Available impact options**
Offering panel and glass options for impact-certification, Pella's fiberglass and steel panels and frame system allow for code compliance. See performance details at PellaADM.com for more information.



Pella® entry doors are backed by some of the strongest warranties in the business.²

Pella entry door fiberglass systems with composite exterior frames are backed by the Pella Limited Lifetime Warranty. The Pella 20/10 Limited Warranty is the standard warranty for all steel and wood entry doors from Pella.

* Study of homeowner perceptions of leading national brands. Study commissioned by Pella, 2019.

Product Specifications

Entry Door Styles	Min. Width	Min. Height	Max. Width ¹	Max. Height	Performance Values ¹	
					U-Factor	SHGC
Flush Glazed Full Light ²	30"	80"	36"	96"	0.25	0.16
Full Light ²	30"	80"	36"	96"	0.25	0.16
3/4 Light ²	32"	80"	36"	96"	0.25	0.21
3/4 Deluxe Oval Light ²	32"	80"	36"	80"	0.24	0.15
1/2 Light 1 Panel Plank	32"	80"	36"	96"	0.23	0.16
Craftsman Light ²	32"	80"	36"	96"	0.19	0.09
Twin Colonial Light	32"	80"	36"	80"	0.19	0.09
2 Panel Square	32"	80"	36"	96"	0.15	0.01
2 Panel Arch Plank	32"	80"	36"	96"	0.15	0.01
Craftsman ²	32"	80"	36"	96"	0.15	0.01
6 Panel ²	30"	80"	36"	96"	0.15	0.01
Flush	30"	80"	36"	96"	0.15	0.01

Panel Styles

Solid



2 Panel Square

2 Panel Arch Plank

Craftsman²

6 Panel²

Flush

Glazed



Craftsman Light²

1/2 Light 2 Panel²

1/2 Light 1 Panel²

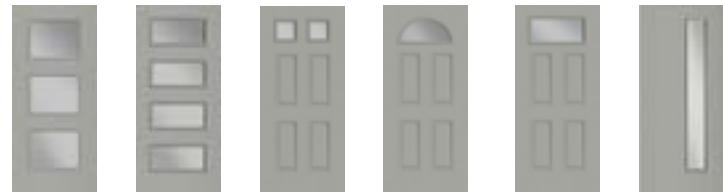
1/2 Light 1 Panel Plank

3/4 Oval Light²

3/4 Deluxe Oval Light²

3/4 Light²

Full Light²



3 Light Equal

4 Light Equal

Twin Colonial Light

Fan Light

Fan Light Rectangle

1 Light Flush

Flush Glazed



Flushed Glazed 1/2 Light²

Flushed Glazed 3/4 Light²

Flushed Glazed Full Light

Flushed Glazed Craftsman

Colors

Finishes

Find the color that coordinates best with your project, from modern to traditional styles, across the country. Our curated collection of on-trend colors was created in collaboration with the team at Sherwin-Williams DesignHouse for Performance Coatings.

Prefinished Stains



Golden Oak

Early American

Provincial

Red Mahogany

Dark Mahogany

Charcoal

Painted Fiberglass or Steel



White

Classic White

Pearl Gray

Soft Linen

Wolf Gray

Almond



Putty

Fossil

Portobello

Brown

Brick Red

Spice Red



Sage

Pine Green

Frost Blue

Blue Ash

Glass

Glass

Low-E insulating glass is available on a broad range of glazed entry doors. It provides thermal protection for exceptional energy efficiency, insulating from both heat and cold – making it a great choice for all climates. Decorative and impact-resistant glass options are available.

Low-E Glass

Energy-saving Low-E insulating glass is a simple, elegant option that helps protect flooring and furniture from fade damage.



Low-E Glass

Low-E Obscure Glass

An elegant way to add privacy, Pella's obscure glass patterns provide unique design simplicity.



Chord

Double Water

Pear

Satin Etch

Narrow Reed

Added Peace of Mind

Integrated Security Sensors

Integrated wireless security sensors maintain aesthetics, streamline security installation and ensure no warranty loss is caused by post-installation drilling. Sensors can be monitored via the free Pella Insynctive® mobile app and are compatible with major security panel systems.* For more information, go to connectpella.com.

¹ Values shown are for a single door. See your Pella representative for more information.

² Availability may be limited. Please contact your local Pella representative for more information.

³ See written limited warranties for complete details, including exceptions and limitations, at pella.com/warranty or contact Pella Customer Service at 877-473-5527.

* Requires the Pella Insynctive App on a smart device, an Insynctive Bridge and a wireless home internet router with internet connection.

Entry Door Hardware

Entry Door Hardware

Pella offers four stunning collections to complement your project's style, architecture and coordinating window hardware. Classic, modern and rustic collections created in partnership with Baldwin® the #1 premium hardware brand.

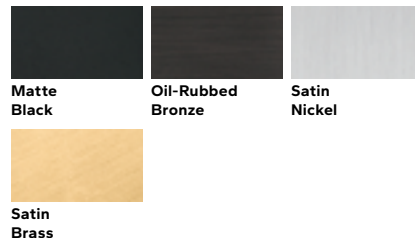
Classic Hardware Collection

BALDWIN

Choose timeless pieces from the Classic Collection for a look that will never go out of style.



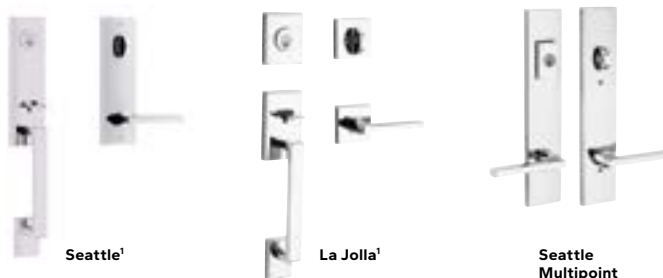
Finishes:



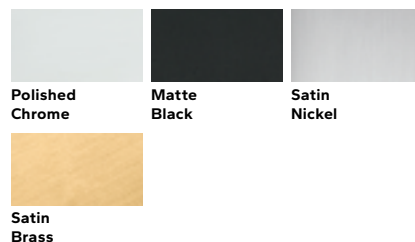
Modern Hardware Collection

BALDWIN

Achieve the ultimate contemporary look with the sleek finishes of Modern hardware.



Finishes:



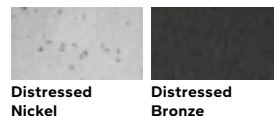
Rustic Hardware Collection

BALDWIN

Stand out with bold looks from the Rustic Collection, and create an utterly unique aesthetic.



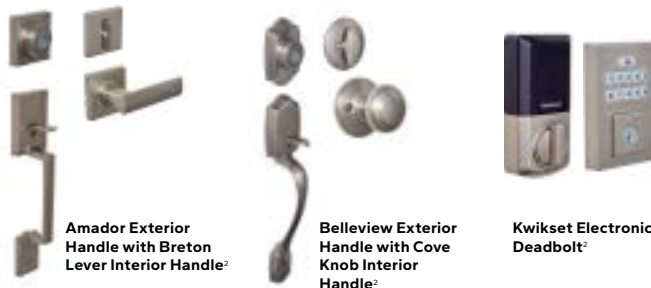
Finishes:



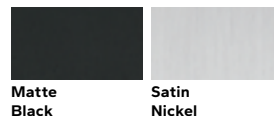
Essential Hardware Collection

BALDWIN

Elevate your style and transform your home with an elegant selection of Essential hardware.



Finishes:



¹ Availability by product style and line may vary. See your local Pella sales representative for details.

² Available Summer 2023

Canyon Ridge® / Carriage House 4-Layer, Design 21; Shown in Ultra-Grain® Cypress Slate Finish with Clear Cypress Overlays in Slate Finish and SQ24 Window Design
Photo Credit: Living Stone Design + Build, Ryan Theede Photography



RUSTIC looks
REFINED

CANYON RIDGE® Carriage House

4-LAYER CONSTRUCTION

Another beautiful, low-maintenance alternative to real wood is the Canyon Ridge® Carriage House 4-Layer faux-wood garage door. Similar in style and construction to its 5-Layer counterpart, it also has an energy-efficient Intellicore® polyurethane insulated steel core topped with Clear Cypress composite overlays to create a carriage house design. The 4-Layer door has fully visible steel panels that can be finished in Ultra-Grain® for a stained wood-look or painted a solid color to match your home.



- 1 COMPOSITE OVERLAY
- 2 STEEL WITH ULTRA-GRAIN® FINISH (SHOWN) OR SOLID COLOR STEEL
- 3 2" INTELICORE® POLYURETHANE INSULATION
- 4 STEEL

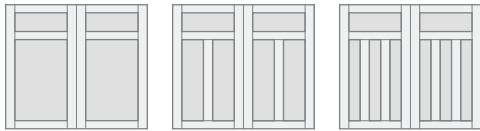
STYLE AND CONSTRUCTION

- 4-layer, steel and composite overlay doors with Intellicore® polyurethane insulation. 18.4 R-value.
- Insulated glass options include clear, frosted, seeded, rain and obscure. See page 16 for details.
- Removable clip-in window grilles for easy cleaning.
- Spade lift handles and step plates included. See page 17 for more options.

Calculated door section R-value is in accordance with DASMA TDS-163. Canyon Ridge® doors not applicable for new construction in California areas designated as "Fire Hazard Severity Zones".

DOOR DESIGNS

SERIES 1

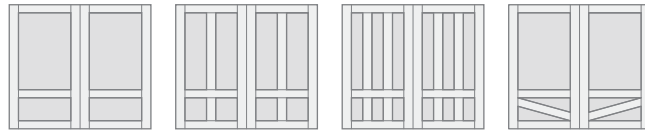


Design 11

Design 12

Design 13

SERIES 3



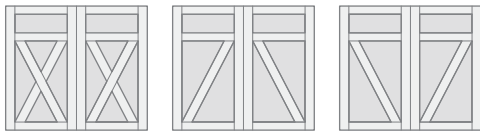
Design 31

Design 32

Design 33

Design 34

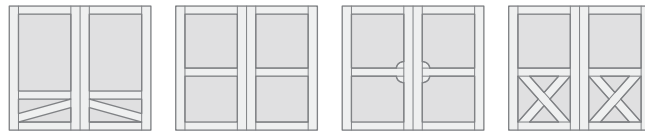
SERIES 2



Design 21

Design 22

Design 23



Design 35

Design 36

Design 37

Design 38

MATERIAL DESIGN OPTIONS

STEEL BASE — OVERLAY



Ultra-Grain® Finish
Clear Cypress
or Solid Color Steel (N)

Clear Cypress (C)

Mahogany (M)

Composite cladding is not present on Carriage House 4-Layer doors.

COLORS



Ultra-Grain® Cypress
Medium Finish

Bronze
Finish*

White Finish*

Primed
(No Finish)



Ultra-Grain® Cypress
Walnut Finish



Charcoal
Finish*



Ultra-Grain® Cypress
Slate Finish



Black
Finish*

Doors can be ordered primed for custom field painting. Note: Primed solid steel base is brown. Overlay stain color may vary due to finishing process.

**Bronze, Charcoal, Black and White Finish available only on Mahogany overlays.*

Two-tone doors are available. To see all options go to: dis.clopay.com.

Steel surfaces have woodgrain texture.

Due to the printing process, colors may vary. Order free color samples at clopaydoor.com/requestcolorssamples.

WARRANTIES



WINDOWS/TOP SECTIONS



REC11

REC13

REC14

SQ23

SQ24



ARCH1 (Glass)

ARCH13

ARCH14

ARCH3

ARCH4



TOP11

TOP12

TOP13

ARCH1 (Solid)

Windows not available on Designs 31, 32, 33, 34, 35, 36, 37 and 38. Standard windows available on the following widths only: 6'2", 8'0", 9'0", 10'0", 10'2", 12'0", 12'2", 13'6", 15'0", 15'2", 15'6", 15'8", 16'0", 16'2", 18'0", 18'2", 20'0", 20'2".

Impact windows available on the following widths only: 8'0", 9'0", 10'0", 12'2", 16'2", 18'2". Additional designs, windows and top sections available.



COMPOSITE OVERLAY

The Look of Wood Without the Upkeep

For homeowners who want the look of wood without the upkeep, composite overlay doors are an excellent choice. Our faux-wood doors are constructed with an insulated steel base door for strength and durability and topped with a moisture-resistant composite overlay molded from natural wood boards. This gives the doors their realistic grain patterns and textures while keeping them low-maintenance. Like wood, the doors can be painted, and in most instances, stained, for a look that is distinctly yours.



CARRIAGE HOUSE
5-LAYER



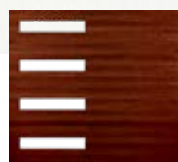
CHEVRON



LOUVER



CARRIAGE HOUSE
4-LAYER

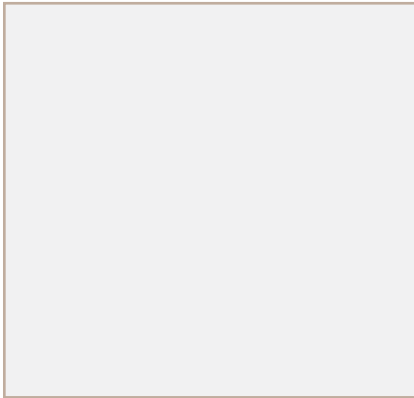


MODERN



ELEMENTS

SPECIALTY GLASS



Clear



Frosted



Seeded*



Obscure



Rain

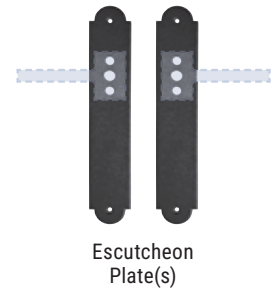
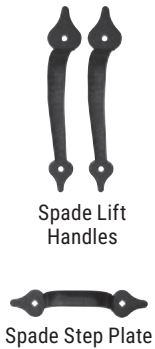
**Seeded is not available on Canyon Ridge® Modern window options.*

Canyon Ridge® Elements is not available with insulated glass options.

Additional charges for optional glass apply.

DECORATIVE HARDWARE

Attractive black powder coated handles and step plates are provided standard to further enhance the Canyon Ridge® Design. Optional decorative hardware – including handles, operable L-keylocks and strap hinges, is also available.



** Door may not open properly if installed near the top depending on opening dimensions and lift type.*

Aluminum Grip Handles are available in the following colors: Clear Aluminum (Anodized), Standard White (Painted), Bronze (Painted), Bronze (Anodized), Black (Anodized) and Dark Bronze (Anodized).



CUSTOM PAINT PROGRAM

Color Blast® offers more than 1,500 Sherwin-Williams® color options to complement your home. Clopay's durable two-part paint system has been thoroughly tested and is backed by a five-year warranty.





*Canyon Ridge® / Carriage House 5-Layer, Design 11;
Shown Custom Painted with Mahogany Cladding,
Mahogany Overlays and REC14 Window Design*

