

**Chochala Sunroom Site Plan**



THIS "PLAN SET" WAS PREPARED AS A GENERAL REFERENCE FOR THIS BUILDING. THE AUTHOR OF THIS "PLAN SET" WILL NOT BE RESPONSIBLE FOR CODE VIOLATIONS AFTER A BUILDING PERMIT HAS BEEN OBTAINED. IT IS THE BUILDER/ CONTRACTORS RESPONSIBILITY TO VERIFY AND CONFORM TO ALL STATE AND LOCAL BUILDING CODES.

BUILDER APPROVAL:

DESIGNED COPY RETURNED TO MAKE CUSTOM DESIGN I.L.C. PRIOR TO START OF CONSTRUCTION.

DATE  
DRAWN BY TPH  
CHECKED BY

MEMBER	<b>A</b>	<b>B</b>	MEMBER
<b>HAKE</b>	<b>CUSTOM DESIGN, LLC</b>	<b>BIA</b>	<b>The Building Industry Assn.</b>
	3527 WHIPPLE AVE., NW CANTON, OHIO 44718 (734) 410-3764		
MEMBER	CPBD		

SHEET NO. 1  
OF 2



OF



GENERAL NOTES:

- 1) ALL WORK IS TO COMPLY WITH THE LATEST ADOPTED VERSION OF THE "RCO" BUILDING CODE AND ANY APPLICABLE STATE, COUNTY OR LOCAL REGULATIONS.
- 2) ALL SITE, EASEMENT & SETBACK CONDITIONS TO BE VERIFIED BY CONTRACTOR PRIOR TO START.
- 3) THE CONTRACTOR IS RESPONSIBLE TO CHECK THE PLANS AND IS TO NOTIFY THE DESIGNER OF ANY ERRORS OR OMISSIONS PRIOR TO THE START OF CONSTRUCTION.
- 4) WRITTEN DIMENSIONS HAVE PRECEDENCE OVER SCALED DIMENSIONS.
- 5) DESIGN LOADS (LIVE):

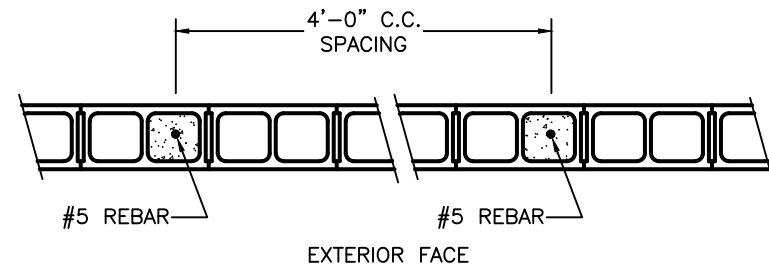
ROOF	25 PSF
FLOOR	40/50 PSF
STAIRS	100 PSF
GARAGE FLR.	50 PSF
DECKS	40 PSF

(IF YOUR LOCAL AREA REQUIRES DIFFERENT DESIGN LOADS CONSULT WITH A LOCAL STRUCTURAL ENGINEER TO DETERMINE THE APPROPRIATE REVISIONS.)
- 6) ELECTRICAL RECEPTACLES IN BATHROOMS, KITCHENS, GARAGES AND WEATHER EXPOSED AREAS SHALL BE G.F.I. OR G.F.I.C. PER NATIONAL ELECTRICAL CODE REQUIREMENTS.
- 7) BUILDING ELEVATION TO BE ADJUSTED PER SITE CONDITIONS BY CONTRACTOR / SURVEYOR.
- 8) ALL WINDOWS TO BE MFG. BY ANDERSEN WINDOW CO.. 100 SERIES WINDOWS & DOOR. SEE CONTRACTOR SPECIFICATIONS FOR DETAILS.
- 9) MASONRY CONTRACTOR TO SIZE STEEL LINTEL'S TO SUPPORT ENTIRE LOAD OF MASONRY.

MASONRY NOTES

1. ALL CONCRETE MASONRY UNITS (CMU) SHALL MEET A.S.T.M. C-90 TYPE I, AND SHALL HAVE THE FOLLOWING MINIMUM STRENGTH REQUIREMENTS:

NET AREA COMPRESSIVE STRENGTH OF UNITS =	1705 PSI
NET AREA COMPRESSIVE STRENGTH OF MASONRY =	1350 PSI
MODULES OF ELASTICITY E <sub>m</sub> =	1,846,000 PSI
2. MASONRY MORTAR SHALL MEET A.S.T.M. C-270, TYPE M.
3. MASONRY REINFORCEMENT SHALL MEET A.S.T.M. A-615, GRADE 60 WITH A MINIMUM YIELD STRENGTH OF 60,000 PSI.
  - A. ALL REINFORCING STEEL SHALL BE CONTINUOUS FROM THE 10-INCH 90-DEG. HOOK IN THE CONCRETE FOUNDATION TO THE TOP OF THE CMU WALL. SPLICING OF REINFORCING STEEL IS PERMITTED, PROVIDED NO. 5 REBARS ARE LAP SPLICED WITH A LAP LENGTH OF 25-INCHES.
  - B. NO. 5 REBAR SPACING AS PER DETAIL BELOW. CMU'S W/ NO. 5 REBAR IS TO BE PLACED WITH ITS CENTER MEASURING 5 INCHES FROM THE OUTSIDE FACE OF THE CMU.



FOUNDATION NOTES:

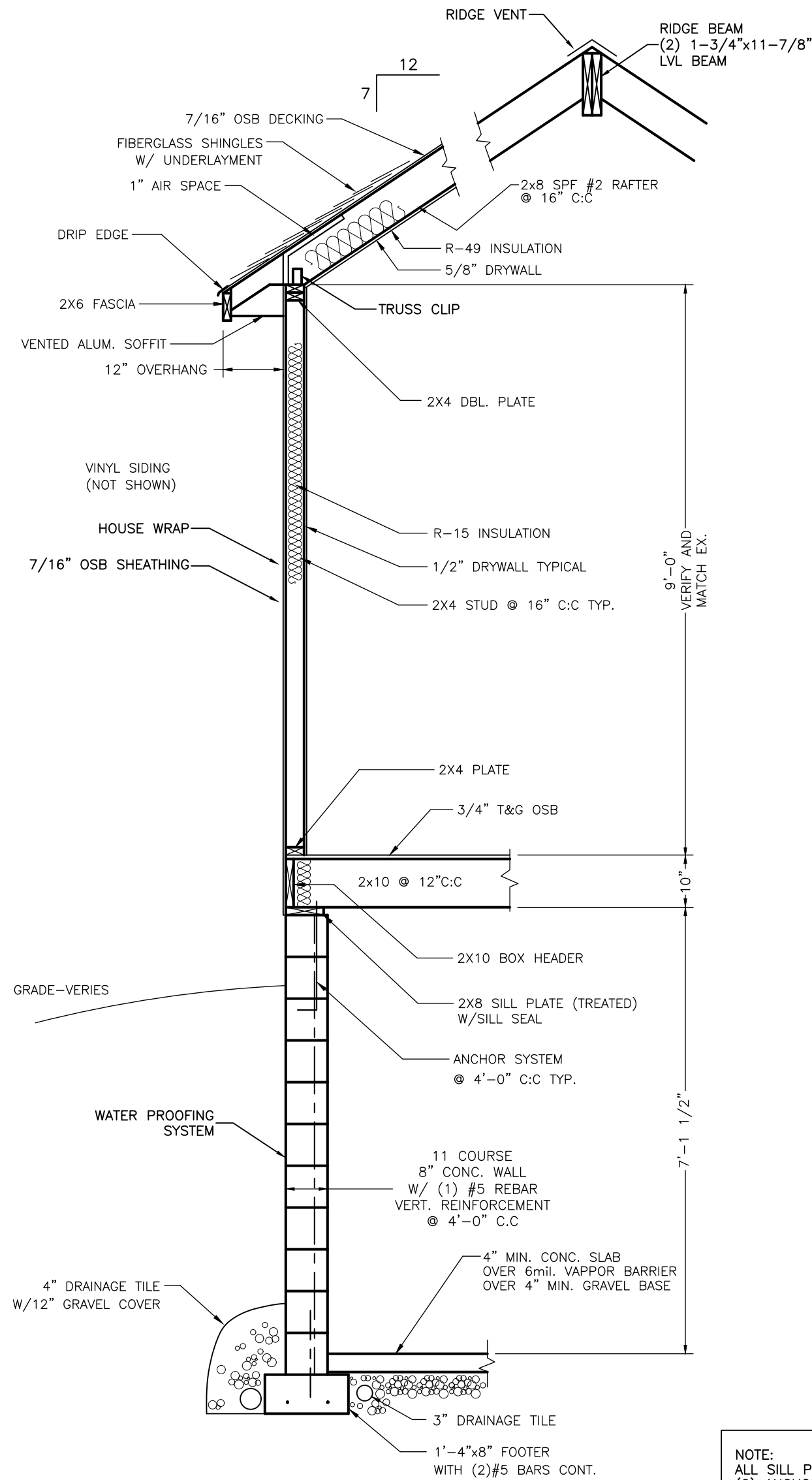
- 1) SOIL BEARING PRESSURE ASSUMED TO BE 2000 PSF.

CONCRETE:	
-BASEMENT AND INTERIOR SLABS ON GRADE:	3,000 PSI
-FOUNDATIONS, WALLS AND FOOTINGS	3,500 PSI
-PORCHES, STEPS AND GARAGE SLABS EXPOSED TO WEATHER:	4,500 PSI w/ 6% ± AIR INTERNMENT
- 2) FOOTINGS TO BEAR ON UNDISTURBED LEVEL SOIL. DEVOID OF ORGANIC MATERIAL AND STEPPED AS REQUIRED TO MAINTAIN A MINIMUM OF 36" BELOW FINAL GRADE.
- 3) CONCRETE SLABS TO HAVE CONTROL JOINTS AT 18" (MAXIMUM) INTERVALS EACH WAY.
- 4) CONCRETE SIDEWALKS TO HAVE 3/4" TOOLED JOINTS AT 5' O.C. (MINIMUM).
- 5) ALL WOOD IN CONTACT WITH CONCRETE TO BE PRESSURE TREATED WOOD.
- 6) BEAM POCKETS IN CONCRETE TO HAVE A 1/2" AIRSPACE AT SIDES AND ENDS WITH A MINIMUM BEARING OF 6".
- 7) ALL HEADERS, BEAMS & SUPPORTS TO BE VERIFIED BY ENGINEER.
- 8) MASONRY REINFORCEMENT SHALL MEET A.S.T.M. A-615, GRADE 60 WITH A MINIMUM YIELD STRENGTH OF 60,000 PSI.
- 9) PROVIDE A MINIMUM OF 1 Sq.Ft. OF VENTILATION AREA FOR EACH 150 Sq.Ft. OF CRAWL SPACE AREA.

FRAMING NOTES:

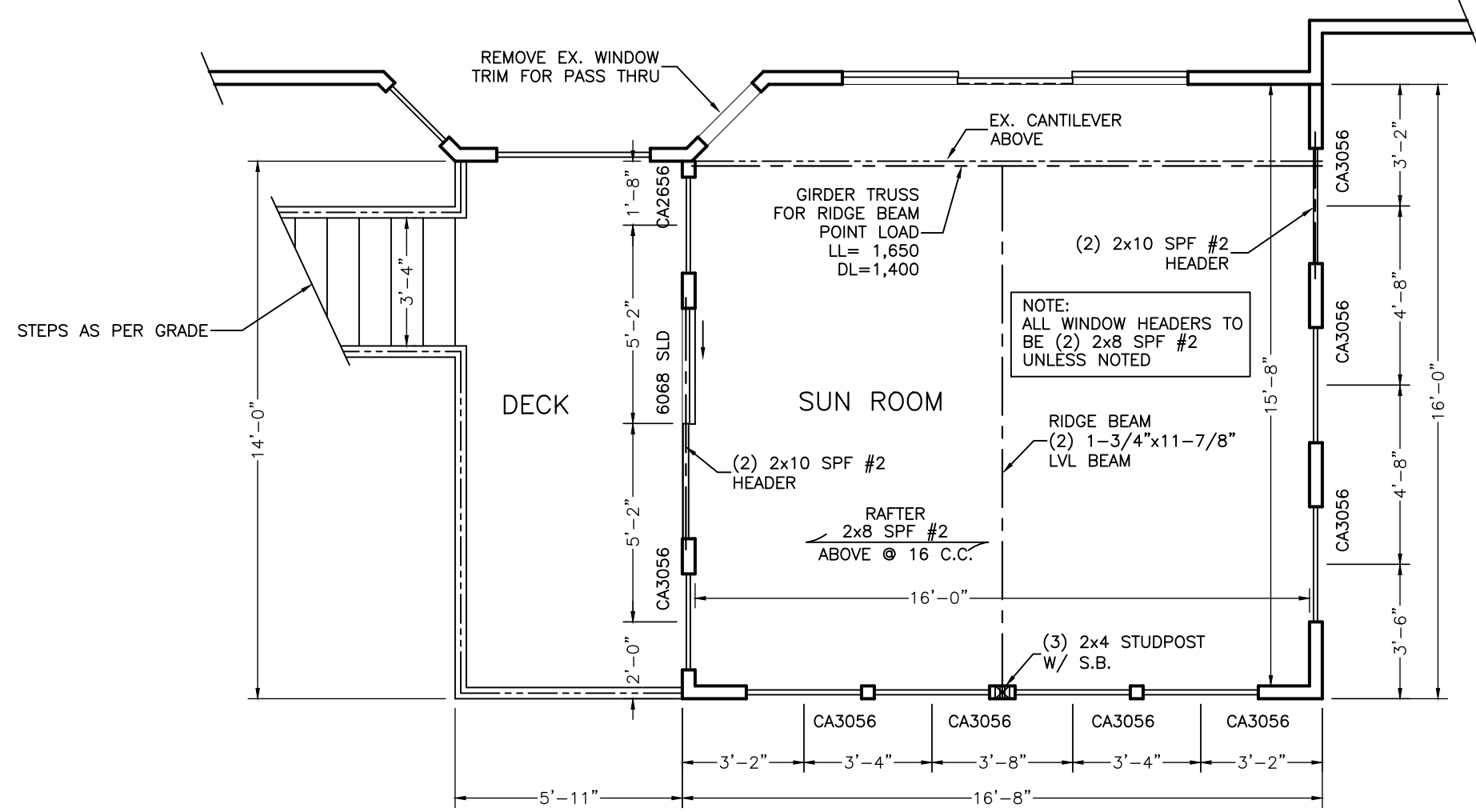
- 1) ALL HEADERS, BEAMS AND SUPPORTS TO BE VERIFIED BY AN ENGINEER.
- 2) PROVIDE DOUBLE JOISTS UNDER ALL WALLS ABOVE RUNNING PARALLEL TO JOIST.
  - A) POSTS, BEAMS, HEADERS JOISTS AND RAFTERS
  - B) SILLS, PLATES, BLOCKING BRIDGING ETC.
  - C) STUDS
- 3) LUMBER SPECIES:

No. 2 SPRUCE PINE FIR OR AS NOTED
No. 2 SPRUCE PINE FIR STUD GRADE D.F.
- 4) "L.V.L." INDICATES MICROLAM 2.0E AND "P.S.L." INDICATES PARALLAM 2.0E MEMBERS AS MANUFACTURED BY "WEYERHAEUSER".
- 5) ALL EXTERIOR WALL HEADERS TO BE DOUBLE 2x10's W/ 1/2" INSUL. BD. UNLESS OTHER WISE NOTED. (SEE NOTE No.1)
- 6) ALL EXTERIOR DIMENSIONS INCLUDE 2x4 STUD W/ 7/16 OSB SHEATHING.
- 7) ALL INTERIOR DIMENSIONS ARE TO ROUGH STUD.
- 8) ALL INTERIOR DIMENSIONS, LAYOUT AND DESIGN AS PER TRUSS MFG.
- 9) S.B. = SOLID BLOCKING TO BEAM/ JOIST OR FOUNDATION BELOW.

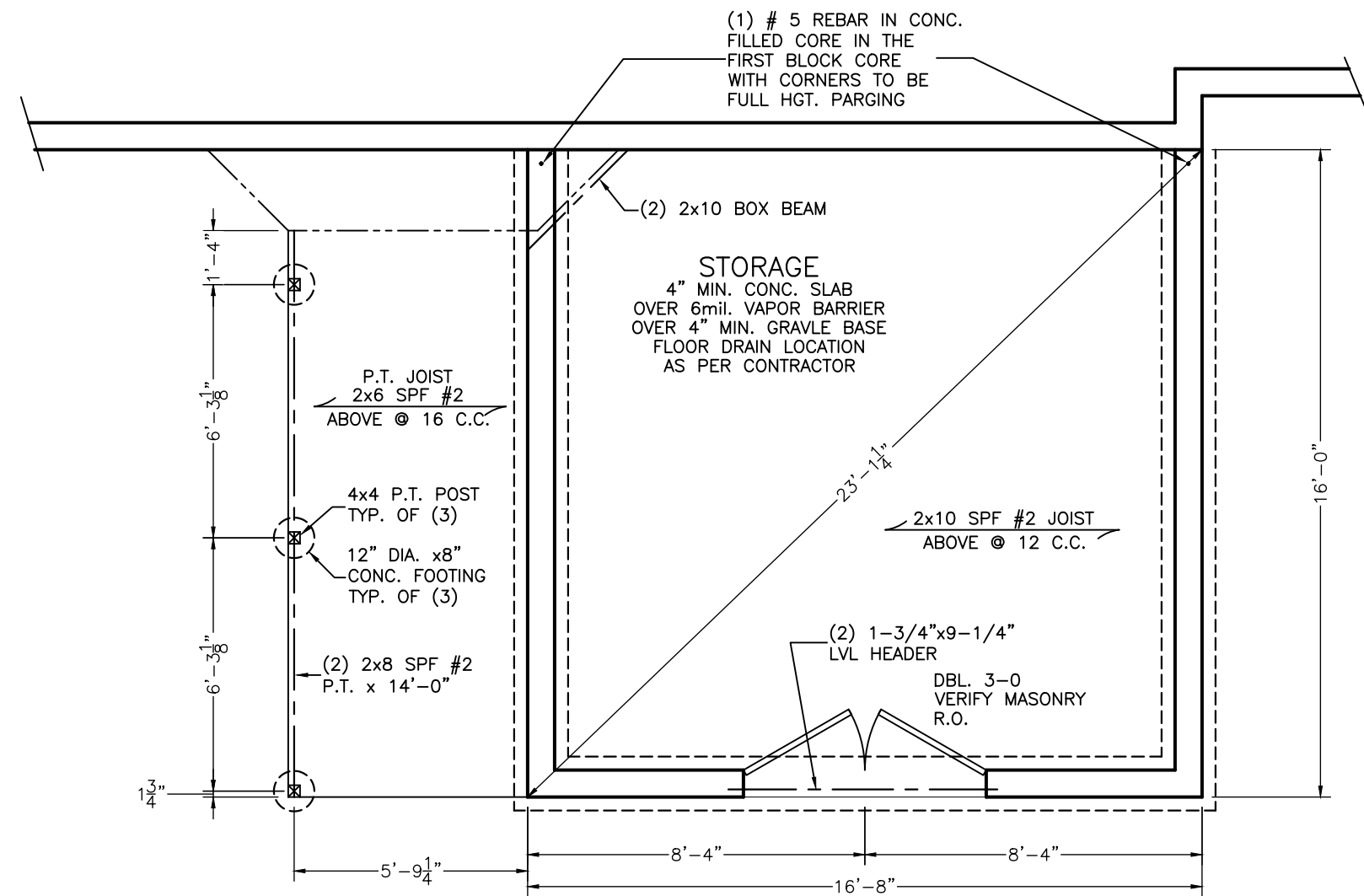


WALL SECTION 1  
SCALE: 1/2"=1'-0"

NOTE:  
ALL SILL PLATE TO HAVE A MIN. OF (2) ANCHOR BOLTS @ 12" MAX. FROM CORNERS W/ 4'-0" MAX. SPACING.



FLOOR PLAN  
SCALE: 1/4"=1'-0"



FOUNDATION PLAN  
SCALE: 1/4"=1'-0"

NOTE:  
IT IS THE CONTRACTORS RESPONSIBILITY TO VERIFY ALL SITE CONDITIONS PRIOR TO THE START OF CONSTRUCTION.

AREA:	ADDITION
MAIN FLOOR	264 Sq.Ft.
BASEMENT	264 Sq.Ft.
DECK	84 Sq.Ft.

ALL DRAWINGS AND MATERIAL APPEARING HEREIN CONSTITUTE THE ORIGINAL AND UNPUBLISHED WORK OF "HAKE CUSTOM DESIGN LLC".  
THE SAME MAY NOT BE COPIED, USED, DISCLOSED OR CONSIGNED TO A THIRD PARTY WITH OUT THE EXPRESSED WRITTEN CONSENT OF THE RETAINED COPYRIGHT

OWNER APPROVAL: \_\_\_\_\_  
BUILDER APPROVAL: \_\_\_\_\_  
SIGNED COPY RETURNED TO HAKE CUSTOM DESIGN LLC PRIED TO START OF CONSTRUCTION.

DATE	2023022
REVISIONS	10/20/23 REVISED ELEVATIONS
DRAWN BY	TPH
CHECKED BY	

THE  
CHOCHOLN RESIDENCE  
ADDITION

MEMBER  
HAKED  
CUSTOM DESIGN, LLC  
The Building Industry Assn.  
3527 WHIPPLE AVE., NW  
CANTON, OHIO 44718  
(234) 410-3764

MEMBER  
A B D  
CPBD













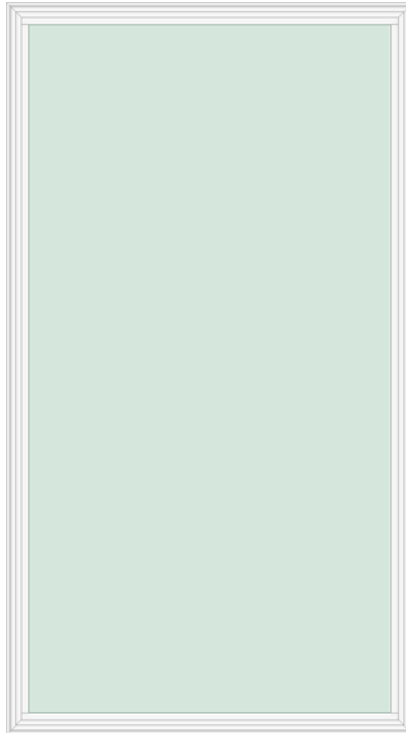




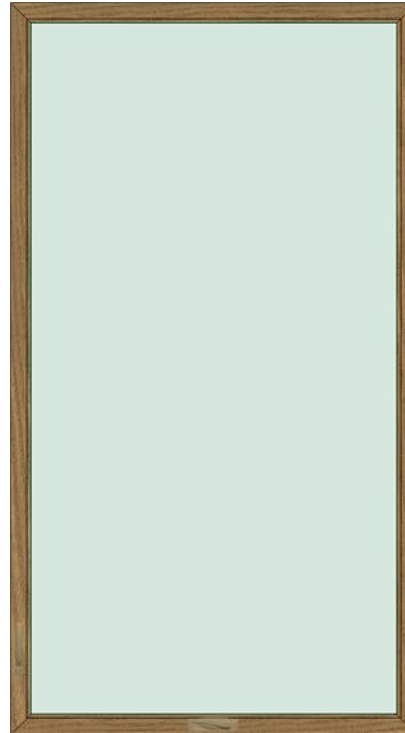


# YOUR PROFESSIONAL-CLASS PRODUCT

Endure EN600 Series 625 - 1-Lite Casement - Hinged Left (OLI)



OUTSIDE VIEW



INSIDE VIEW

## SIZING

Opening Width Range: 36 1/4" to 36 1/2"  
Opening Height Range: 65 1/4" to 65 1/2"  
Window Size: 36" x 65"  
United Inches: 101  
Egress Size: 23 29/32" x 59 9/16"  
Egress Square Foot: 9.8896  
Egress Meets Criteria: Yes  
Operable Sash Size: 34 3/8" x 63 3/8"  
Operable Glass Size: 32 1/4" x 61 1/4" x 3/4"  
Operable Glass Viewable: 31 3/8" x 60 3/8"  
Size:  
Full Screen: 32 5/16" x 61 5/16"  
Casement Screen Notch: 19 15/16"

## Structural

**Product:** Vinyl Casement Window  
**Cert #:** 462-H-009.01  
**Class:** LC-PG50  
**Max Test Size:** 36" x 75"  
**Test Std:** AAMA/WDMA/CSA  
101/1.S.2/A440-08/-011/-17



## ENERGY

### ENERGY PERFORMANCE RATINGS

U-Factor (U.S./I-P) Solar Heat Gain Coefficient

0.25

0.21

### ADDITIONAL PERFORMANCE RATINGS

Visible Transmittance Condensation Resistance

0.46

60.00

Air Infiltration (cfm/ft2)

<= 0.02



ENERGY STAR® Certified  
In All 50 States.



877.389.0835  
2150 State Route 39  
Sugarcreek, OH 44681

## QUOTE INFORMATION

Job: Lasorella

Order #10396081-1

Qty: 7

## DETAILS

### Endure Window - EN600 Series

625 - 1-Lite Casement - Hinged Left (OLI)

Classic Oak Inside / White Outside

FineLine

Exact Size: 36" x 65"

Corner Drive System

ROTO Hardware

Coppertone Lock-out Crank Handle

INNERGY Thermal Sash Reinforcement

Extruded Full Screen (Classic Oak) with SeeVue Mesh

Graphite Foam Insulation

Nail Fin Factory Installed

Comfortech DLA-UV

Double Strength Glass

3/4" IG Thickness

**Sell Price: \$4,816.29** (\$688.04 per one)

## Installation Instructions



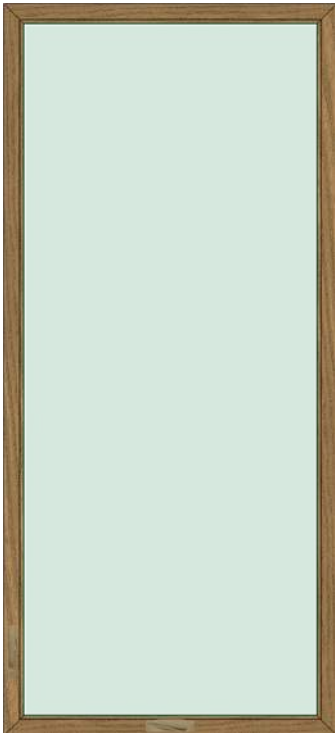


# YOUR PROFESSIONAL-CLASS PRODUCT

Endure EN600 Series 625 - 1-Lite Casement - Hinged Left (OLI)



OUTSIDE VIEW



INSIDE VIEW



877.389.0835  
2150 State Route 39  
Sugarcreek, OH 44681

## QUOTE INFORMATION

Job: Lasorella  
Order #10396081-2  
Qty: 2

## DETAILS

### Endure Window - EN600 Series

625 - 1-Lite Casement - Hinged Left (OLI)  
Classic Oak Inside / White Outside  
FineLine  
Exact Size: 30" x 66"  
Corner Drive System  
ROTO Hardware  
Coppertone Lock-out Crank Handle  
INNERGY Thermal Sash Reinforcement  
Extruded Full Screen (Classic Oak) with SeeVue Mesh  
Graphite Foam Insulation  
Nail Fin Factory Installed  
ComforTech DLA-UV  
Single Strength Glass  
3/4" IG Thickness

**Sell Price: \$1,320.72** (\$660.36 per one)

### SIZING

Opening Width Range: 30 1/4" to 30 1/2"  
Opening Height Range: 66 1/4" to 66 1/2"  
Window Size: 30" x 66"  
United Inches: 96  
Egress Size: 17 29/32" x 60 9/16"  
Egress Square Foot: 7.5323  
Egress Meets Criteria: No  
Operable Sash Size: 28 3/8" x 64 3/8"  
Operable Glass Size: 26 1/4" x 62 1/4" x 3/4"  
Operable Glass Viewable Size: 25 3/8" x 61 3/8"  
Full Screen: 26 5/16" x 62 5/16"  
Casement Screen Notch: 19 15/16"

### Structural

N/A

### Installation Instructions



### ENERGY

#### ENERGY PERFORMANCE RATINGS

U-Factor (U.S./I-P)      Solar Heat Gain Coefficient  
0.25      0.21

#### ADDITIONAL PERFORMANCE RATINGS

Visible Transmittance      Condensation Resistance  
0.47      61.00  
Air Infiltration (cfm/ft2)  
≤ 0.02

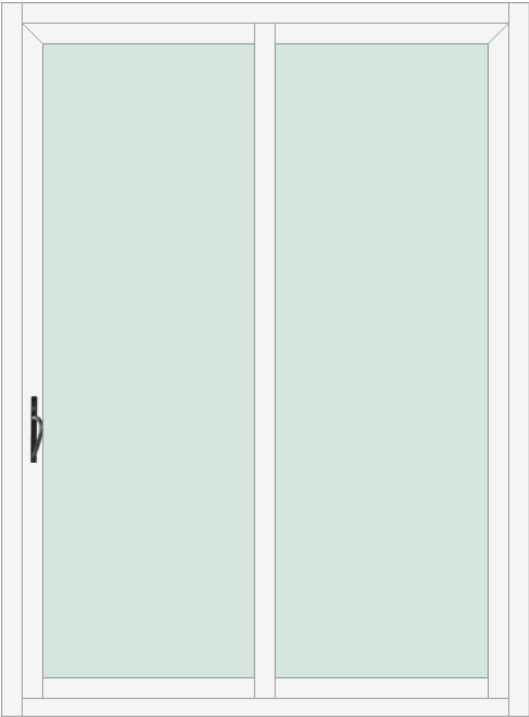


**ENERGY STAR® Certified**  
In All 50 States.



# YOUR PROFESSIONAL-CLASS PRODUCT

Endure EN6500 Series 2 Lite Patio Door with Clear Glass



OUTSIDE VIEW



INSIDE VIEW

## SIZING

Opening Width Range: 59" to 59 1/2"  
Opening Height Range: 79 5/8" to 80"  
Frame Depth: 4 9/16"  
Door Size: 58 7/8" x 79 1/2"

## HANDING



Outside Looking In

## Installation Instructions



## ENERGY

### ENERGY PERFORMANCE RATINGS

U-Factor (U.S./I-P) Solar Heat Gain Coefficient

0.28

0.21

### ADDITIONAL PERFORMANCE RATINGS

Visible Transmittance Condensation Resistance

0.46

60.00

Air Infiltration (cfm/ft2)

<= 0.30



ENERGY STAR® Certified  
In All 50 States.

### Structural:

R-PG55 147mph

AAMA/WDMA/CSA 101/I.S.2/A440-08 and 11

DP 55



877.389.0835  
2150 State Route 39  
Sugar Creek, OH 44681

## QUOTE INFORMATION

Job: Lasorella

Order #10396081-3

Qty: 1

## DETAILS

### Endure 6512 Endure 2-Lite Patio Door

Standard Size: 60" x 80"

Unit Size: 58 7/8" x 79 1/2"

Left Hand Operable - Left Door Active (OSLI)

White Outside / Dark Oak Inside

Aeris/Endure Aged Bronze Multi-Point Mortised Handle  
with Keylock

Assign a Random Key Number

Top Hung Screen with SeeVue Stainless Steel Mesh

Fully Assembled Unit

Graphite Foam Insulation

AccuVent Multi-Venting System (Bronze)

Glass for Entire Unit:

ComforTech DLA-UV

Double Strength Glass (Tempered)

FineLine

**Sell Price: \$2,144.68**

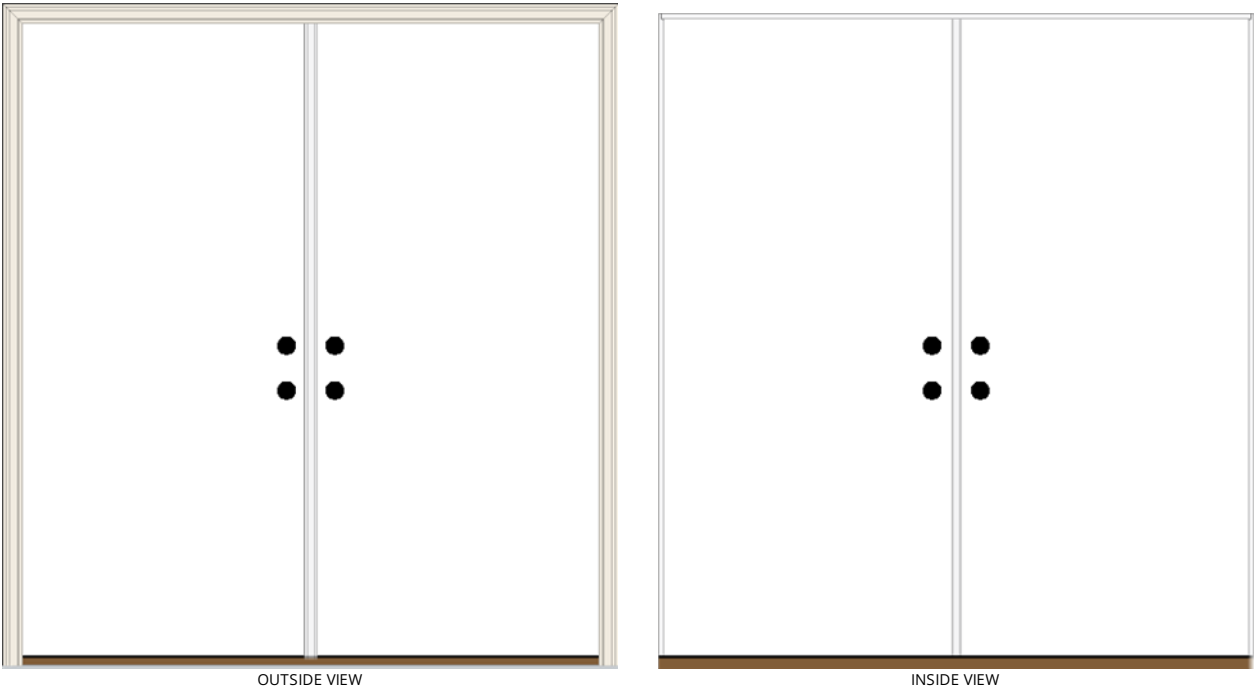
Tax - 6.5%: \$538.31

**Total: \$8,819.99**



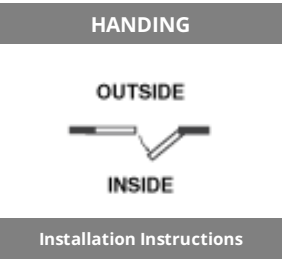
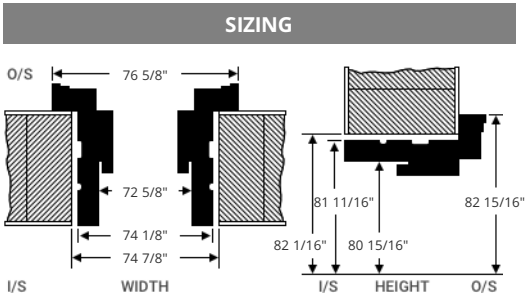
# YOUR PROFESSIONAL-CLASS PRODUCT

24-Gauge 24-Gauge Smooth Steel French Door



OUTSIDE VIEW

INSIDE VIEW



Installation Instructions



ENERGY	
ENERGY PERFORMANCE RATINGS	
U-Factor (U.S./I-P)	Solar Heat Gain Coefficient
0.18	0.01
ADDITIONAL PERFORMANCE RATINGS	
Visible Transmittance	-
0.00	-
Air Infiltration (cfm/ft2)	
<= 0.10	



877.389.0835  
2150 State Route 39  
Sugarcreek, OH 44681

## QUOTE INFORMATION

Job: Lasorella Hudson  
Order #10617429-1  
Qty: 1

## DETAILS

### 24-Gauge French Entry Door in FrameSaver Frame

72" x 80" Nominal Size

Unit Size: 74 1/8" x 81 11/16"

Frame Depth: 4 9/16"

2" Standard Brickmold

Left Hand Inswing - Right Door Active (ISLO)

### French Doors

001 Style 24-Gauge Smooth Steel Door

Snow Mist White Inside and Outside

### Hardware

Georgian Lockset - Prep Only - Both Doors

Thumbturn Deadbolt - Prep Only - Both Doors

Bright Brass Strike Plates

### Frame

Snow Mist White Inside Frame

Standard Astragal (Flip Lever)

Mill Finish ZAI Adjustable Threshold (5 5/8" Depth)

Zinc Chromate Plain Bearing Hinges (Complements Bright and Antique Brass)

**Sell Price: \$1,025.29**

Tax - 6.5%: \$66.64

**Total: \$1,091.93**



# Woodsman Select

PREMIUM VINYL SIDING

THE WARM, NATURAL LOOK  
OF ROUGH-SAWN CEDAR



VINYL SIDING, SOFFIT & ACCESSORIES





# THE LOOK OF WOOD, THE VALUE OF VINYL

## FEATURES AND BENEFITS



**.042" Panel thickness** with a low gloss natural cedar woodgrain pattern

A 5/8" panel projection provides rigidity and casts deep, appealing shadow lines



A heavy duty extended return leg snaps tightly into the TitanBar® Reinforced Nail Hem which is double the thickness of the siding panel under the nail head, for an installation that's solid, secure and protects against panel blow off in adverse weather conditions



**XLOK TECHNOLOGY** **TitanBar**™ REINFORCED NAIL HEM **NailRIGHT** SIDING INSTALLATION SYSTEM

XLoK® Technology combines the TitanBar, Reinforced Nail Hem and the NailRIGHT® Siding Installation System, two innovations that help ensure the siding is securely interlocked and properly affixed to the wall



**COLORHOLD**®  
*Lifetime Fade Protection*

ColorHold is a highly-durable capstock that resists fading and discoloring and is backed by a Limited Lifetime Transferable Warranty\* including Lifetime Fade Protection

\*Visit [www.norandex.com](http://www.norandex.com) to view warranty details



Matching and contrasting soffit, accessories, shakes and shingles available to give your home a one-of-a-kind look



Profile & Color Shown: Double 4", Silver



**Make Woodsman Select Premium Vinyl Siding the choice for the life of your home.**

- Virtually maintenance free. Save time and money on upkeep costs.
- Because it's solid vinyl, it won't blister, crack, flake, peel or rot like wood exteriors.
- A sound investment that can help increase the resale value of your home.

- **FOUR DISTINCTIVE PROFILES:**
  - Double 4" & 5" Clapboard
  - Double 4" & 5" Dutchlap





Profile & Color Shown: Double 5", Maverick Brown



### 15 Year COMPARISON OF FADE

ORIGINAL SIDING COLOR

WOODSMAN SELECT PREMIUM VINYL SIDING -  
AFTER 3 YEARS OF EXPOSURE

WOODSMAN SELECT PREMIUM VINYL SIDING -  
AFTER 15 YEARS OF EXPOSURE

STANDARD VINYL SIDING -  
AFTER 3 YEARS OF EXPOSURE

This is a visual representation of the actual fade  
that can be expected on standard vinyl siding  
vs. Woodsman Select Premium Vinyl Siding.  
Colors are mechanically reproduced.

NORANDEX  
**Woodsman Select**  
PREMIUM VINYL SIDING

## COLOR AVAILABILITY

### 22 BEAUTIFUL COLORS

WHITE	CACTUS
BEIGE	FERN PREMIUM
TAN	KHAKI PREMIUM
CHAMPAGNE	OLIVE PREMIUM
SIERRA PREMIUM	SILVER
CREAM	SMOKE PREMIUM
SANDSTONE	GRANITE PREMIUM
TUMBLEWEED PREMIUM	WEDGEWOOD PREMIUM
MOCHA PREMIUM	SEAPORT DESIGNER COLLECTION
RUSSET DESIGNER COLLECTION	STEEL BLUE DESIGNER COLLECTION
MAVERICK BROWN DESIGNER COLLECTION	GRAPHITE DESIGNER COLLECTION

Colors are mechanically reproduced.  
For color accuracy, please see actual product sample.

PREMIUM VINYL SIDING & SOFFIT  
**DESIGNER  
COLLECTION**

A beautiful collection of darker, richer  
colors with tremendous curb appeal,  
providing a real value for homeowners  
seeking a unique darker finish that  
stands out and stands apart from others  
in the neighborhood



# SAFE SECURE INSTALLATION

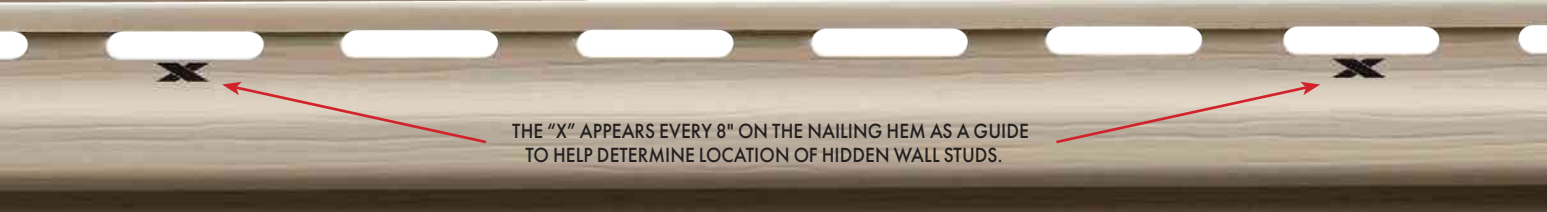
Your professional installation crew takes every possible precaution to make sure your new siding looks and performs its best.

They use the Norandex proprietary NailRIGHT® Siding Installation System to help them locate and precisely nail into the framing studs. This is a very important detail because misapplied nails can cause siding to buckle, blow off in windy

conditions, or be hazardous if they strike wiring or plumbing located between the studs.

NailRIGHT helps ensure an accurate and safe installation. It securely connects the siding to the wall for optimum performance. This means the beautiful siding you select will not only stand out, but will stay up, even in extreme weather conditions.

Beauty and Performance. It's the perfect siding combination to make the exterior of any home...perfect.



THE "X" APPEARS EVERY 8" ON THE NAILING HEM AS A GUIDE TO HELP DETERMINE LOCATION OF HIDDEN WALL STUDS.

## AVOID:



Hidden Dangers

Nails that miss their mark can be potentially hazardous to items, like wiring and plumbing, located in the cavities between studs.



Blow Off

NailRIGHT helps guide the installer to the studs for an installation that's strong, secure and resistant to blow offs.



Unnecessary Nail Usage

NailRIGHT assures the proper amount of nails are used, saving your home from unnecessary hammer hits.

Profile & Color Shown: Double 4," Silver





## COMPLEMENT YOUR NEW SIDING WITH OTHER QUALITY EXTERIOR PRODUCTS



Your home deserves the best. That's why, in addition to siding, we offer other top quality products to beautify and protect your home. Whether it's entry doors, energy-efficient windows, soffit, trim, or metals, you can rest comfortably knowing you've finished your home with performance products that are among the best the industry has to offer.



VINYL SIDING, SOFFIT & ACCESSORIES

1-800-528-0942

[www.norandex.com](http://www.norandex.com)