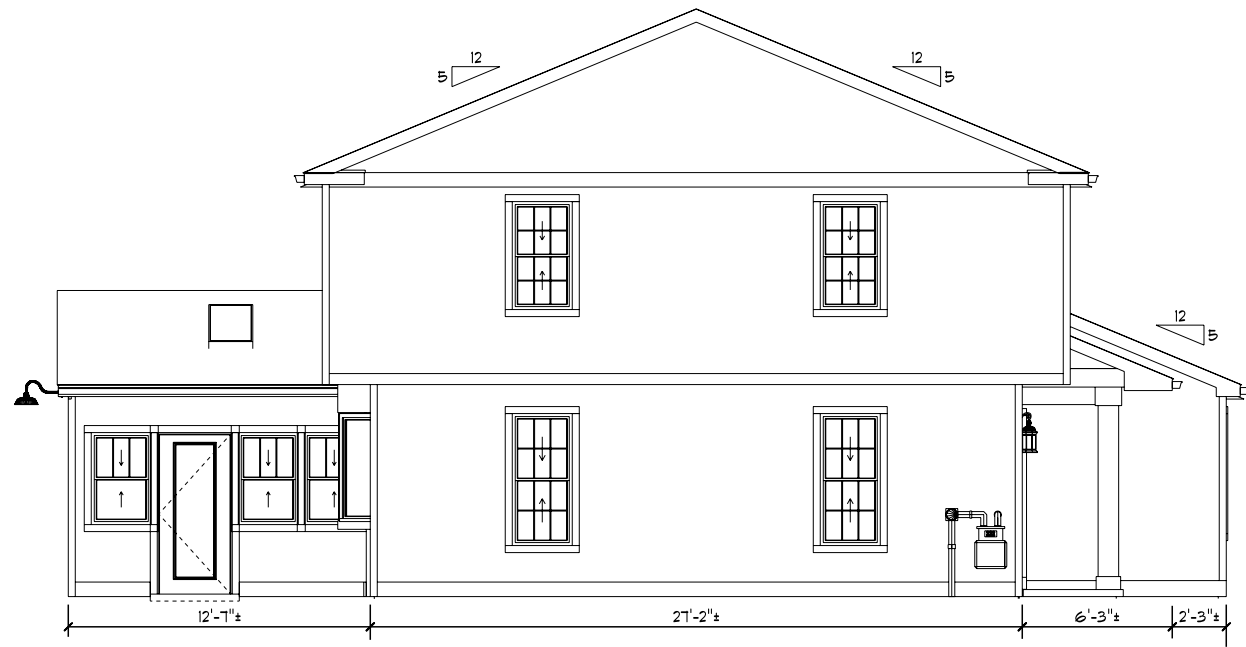




FRONT ELEVATION 5-1-2026

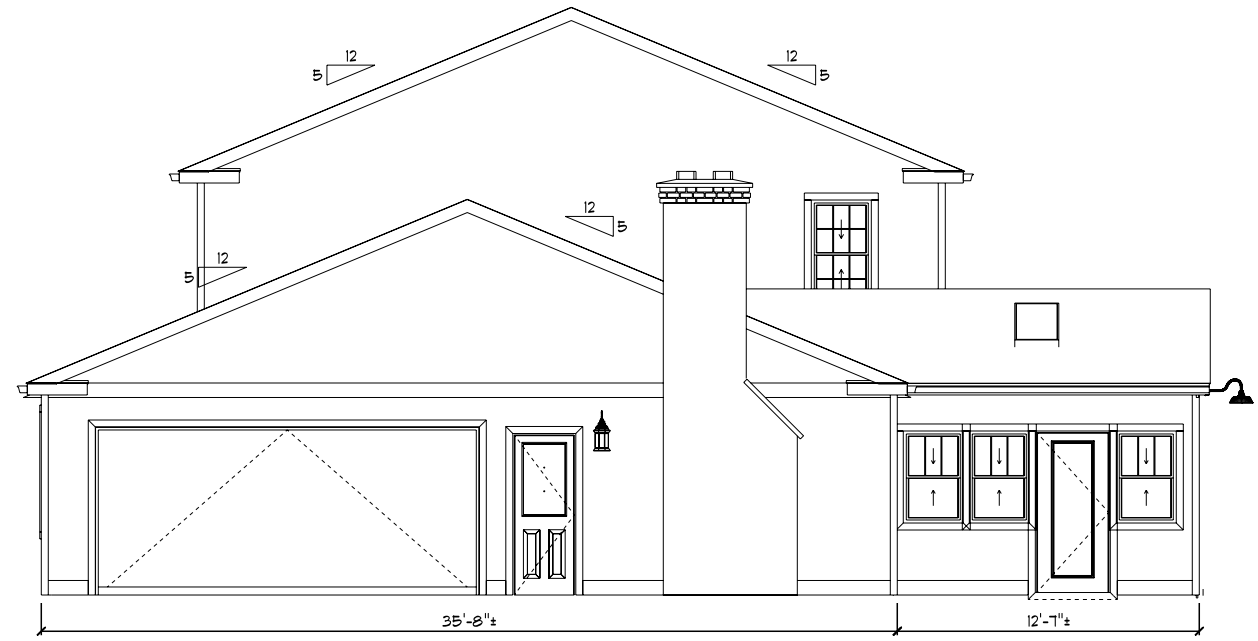
SCALE: $1/8" = 1'-0"$





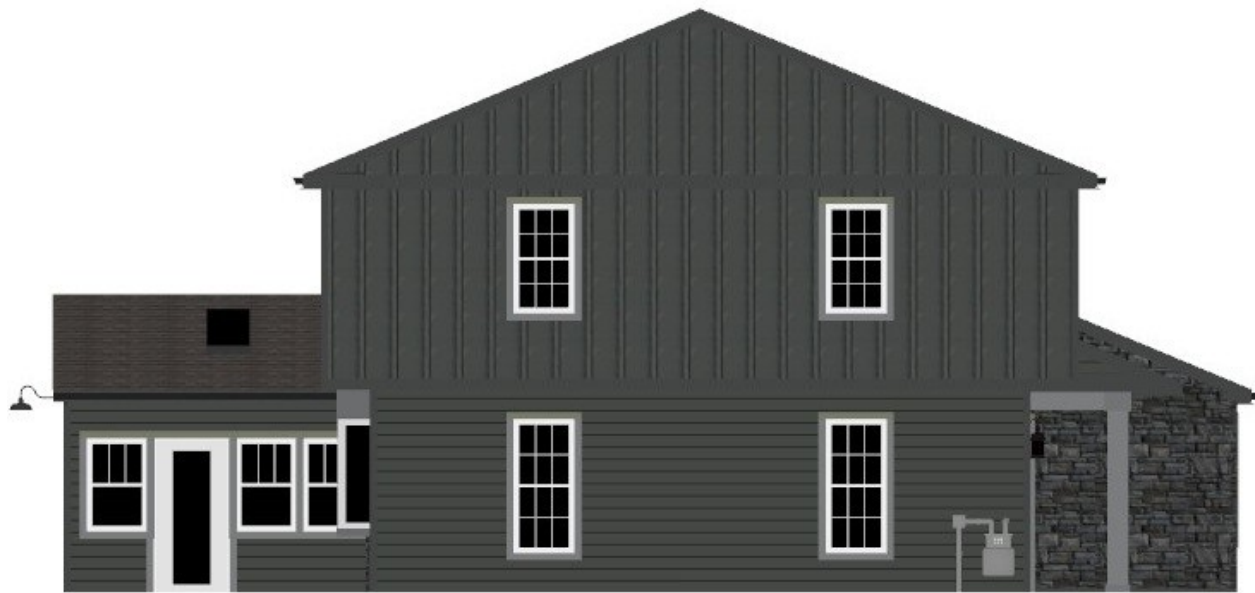
LEFT ELEVATION 5-1-2026

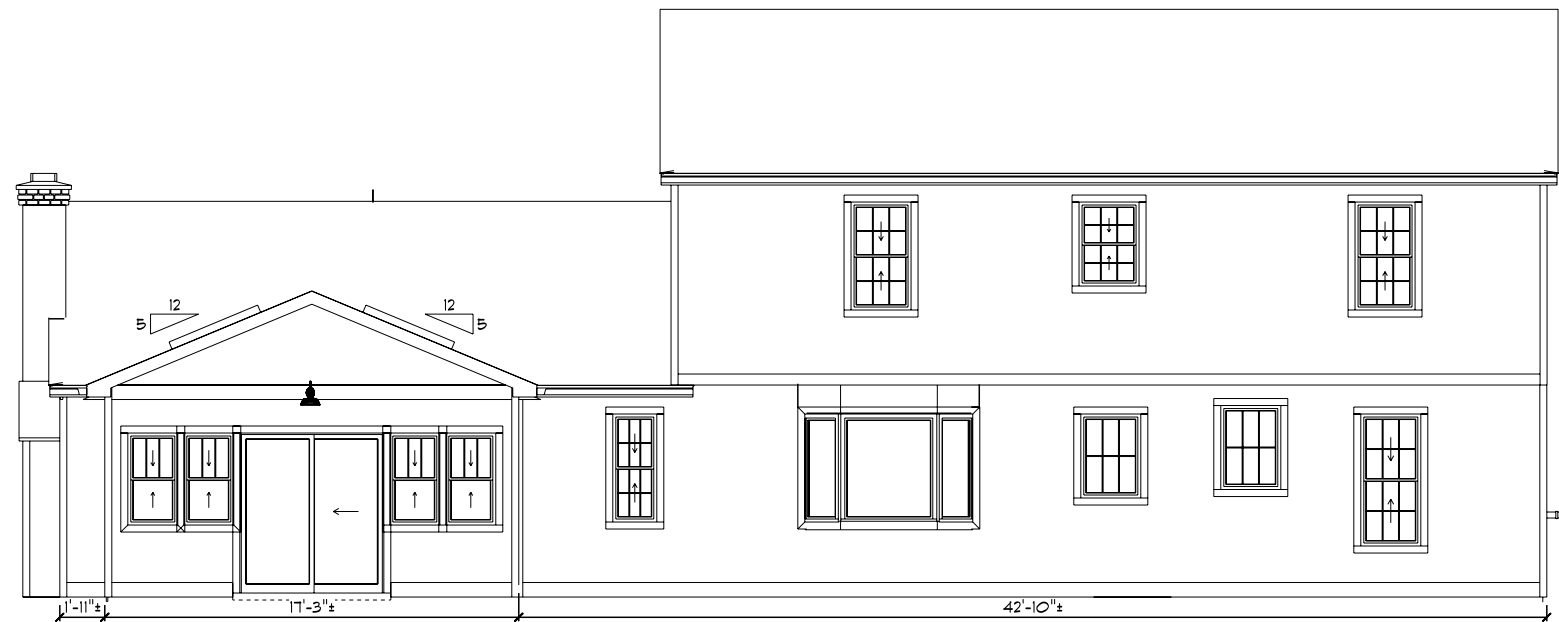
SCALE: 1/8" = 1'-0"



RIGHT ELEVATION 4-28-2026

SCALE: 1/8" = 1'-0"



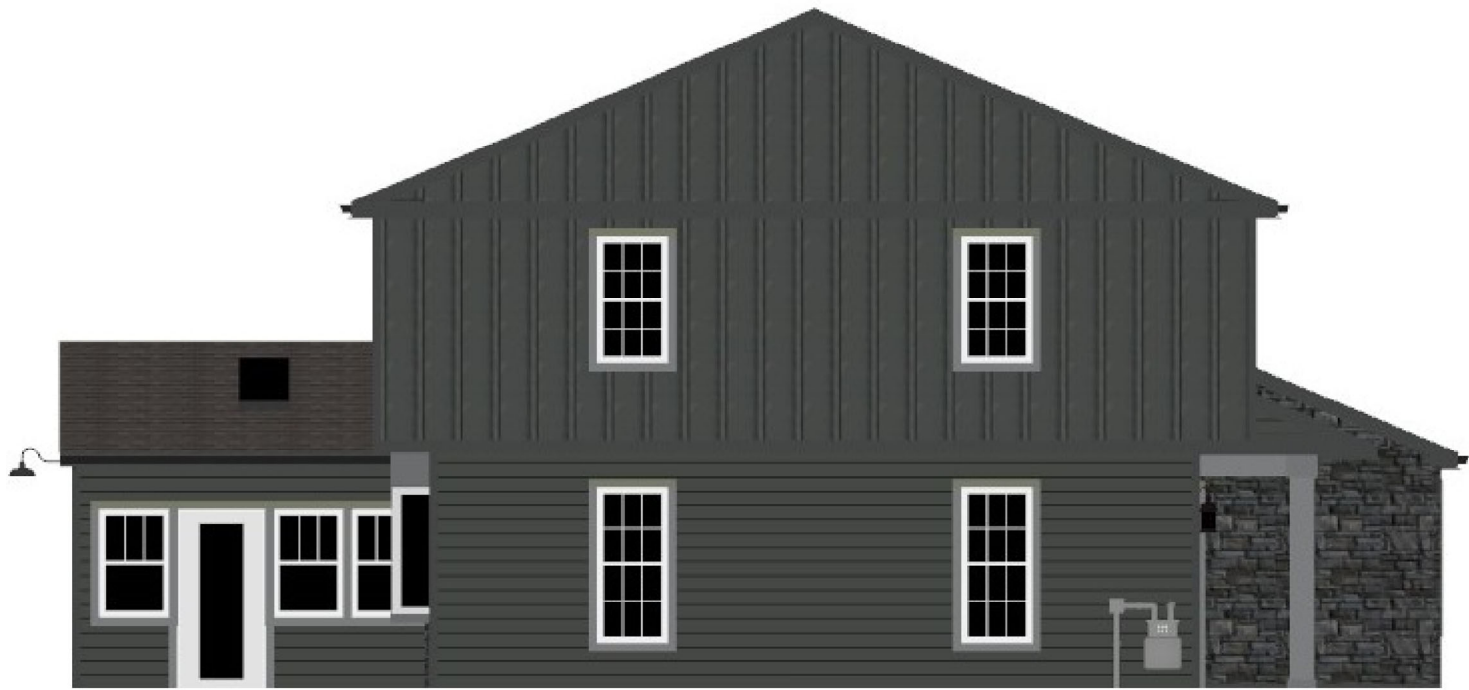


REAR ELEVATION 4-28-2026

SCALE: 1/8" = 1'-0"











Vertical Siding - Cedar Texture

3/8" Nominal Thickness
Primed: 16' x 16"

VERTICAL SIDING

Cedar Texture

Products:

- LP® SmartSide® 38 Series Vertical Siding
- LP® SmartSide® ExpertFinish® 38 Series Vertical Siding

DESIGNED & RATED FOR EXTERIOR USE

Not rated for structural use. Sheathing-only attachment; see installation instructions for details

Substrate:

- Features engineered wood strand technology with precisely-sized, shaped, and layered wood strands from Aspen logs
- Made using LP's proprietary SmartGuard® process, which includes industrial-grade resins, water-resistant waxes, zinc borate, and a resin-saturated overlay



Pair with LP® SmartSide® trim for board & batten style applications

Application Instructions:

LP Corp.com/Literature

Sustainability Info:

- ASTM-Verified Carbon Negative
- Made with wood, a renewable resource, vetted through strict Sustainable Forestry Initiative® (SFI®) standards



Primed Specifications and PIDs:

38 SERIES CEDAR TEXTURE VERTICAL SIDING



PRODUCT	LENGTH	ACTUAL WIDTH	THICKNESS	WEIGHT	PID
38 Series Cedar Texture Vertical Siding	16 ft. (192 in.) (4.9 m)	15.94 in. (405 mm)	0.354 in. (9 mm)	1.5 PSF	40503

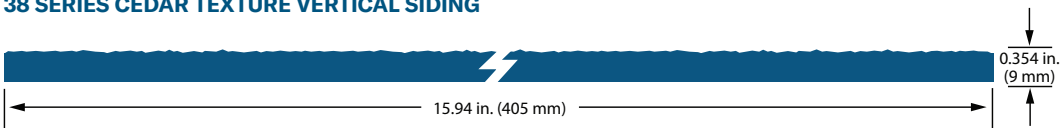
ExpertFinish® Color Specifications and PIDs:



COLOR	LENGTH	ACTUAL WIDTH	THICKNESS	WEIGHT	PID
Snowscape White	16 ft. (192 in.) (4.9 m)	15.94 in. (405 mm)	0.354 in. (9 mm)	1.5 PSF	41730
Sand Dunes	16 ft. (192 in.) (4.9 m)	15.94 in. (405 mm)	0.354 in. (9 mm)	1.5 PSF	41820
Desert Stone	16 ft. (192 in.) (4.9 m)	15.94 in. (405 mm)	0.354 in. (9 mm)	1.5 PSF	43152
Quarry Gray	16 ft. (192 in.) (4.9 m)	15.94 in. (405 mm)	0.354 in. (9 mm)	1.5 PSF	41819
Prairie Clay	16 ft. (192 in.) (4.9 m)	15.94 in. (405 mm)	0.354 in. (9 mm)	1.5 PSF	43194
Terra Brown	16 ft. (192 in.) (4.9 m)	15.94 in. (405 mm)	0.354 in. (9 mm)	1.5 PSF	41821
Harvest Honey	16 ft. (192 in.) (4.9 m)	15.94 in. (405 mm)	0.354 in. (9 mm)	1.5 PSF	45381
Timberland Suede	16 ft. (192 in.) (4.9 m)	15.94 in. (405 mm)	0.354 in. (9 mm)	1.5 PSF	43291
Garden Sage	16 ft. (192 in.) (4.9 m)	15.94 in. (405 mm)	0.354 in. (9 mm)	1.5 PSF	45382
Redwood Red	16 ft. (192 in.) (4.9 m)	15.94 in. (405 mm)	0.354 in. (9 mm)	1.5 PSF	43232
Tundra Gray	16 ft. (192 in.) (4.9 m)	15.94 in. (405 mm)	0.354 in. (9 mm)	1.5 PSF	43312
Summit Blue	16 ft. (192 in.) (4.9 m)	15.94 in. (405 mm)	0.354 in. (9 mm)	1.5 PSF	43341
Rapids Blue	16 ft. (192 in.) (4.9 m)	15.94 in. (405 mm)	0.354 in. (9 mm)	1.5 PSF	43337
Cavern Steel	16 ft. (192 in.) (4.9 m)	15.94 in. (405 mm)	0.354 in. (9 mm)	1.5 PSF	43133
Midnight Shadow	16 ft. (192 in.) (4.9 m)	15.94 in. (405 mm)	0.354 in. (9 mm)	1.5 PSF	45383
Abyss Black	16 ft. (192 in.) (4.9 m)	15.94 in. (405 mm)	0.354 in. (9 mm)	1.5 PSF	41775
Washed White	16 ft. (192 in.) (4.9 m)	15.94 in. (405 mm)	0.354 in. (9 mm)	1.5 PSF	46875
Smoky Slate	16 ft. (192 in.) (4.9 m)	15.94 in. (405 mm)	0.354 in. (9 mm)	1.5 PSF	46874
Bonsai Black	16 ft. (192 in.) (4.9 m)	15.94 in. (405 mm)	0.354 in. (9 mm)	1.5 PSF	46873
Weathered Walnut	16 ft. (192 in.) (4.9 m)	15.94 in. (405 mm)	0.354 in. (9 mm)	1.5 PSF	46872
Aged Amber	16 ft. (192 in.) (4.9 m)	15.94 in. (405 mm)	0.354 in. (9 mm)	1.5 PSF	46871
Saffron Cedar	16 ft. (192 in.) (4.9 m)	15.94 in. (405 mm)	0.354 in. (9 mm)	1.5 PSF	46870

NEW NATURALS COLLECTION™
VERTICAL SIDING

38 SERIES CEDAR TEXTURE VERTICAL SIDING



See LPCorp.com for product, warranty, and installation details. Metric units are rounded. PSF = Pounds Per Square Foot
Contact your LP Sales Rep for product availability.
All colors shown are representative and may not be an exact match.

1

VINYL WINDOW

- Price per One

Warning - This line is out of date, in an error state, or not saved correctly.

In order to continue, you must edit and save the line, correcting any configuration issues.

- Product Options -

- Endure Window - EN600 Series
 - 601 - Double Hung
 - White
 - Opening Size: 30" x 46"
 - Unit Size: 29 1/2" x 45 1/2"
 - Compound Tension Balance System
 - Snap-In Frame Sash Stops
 - Double Profile DA Locks
 - White Vent Locks
 - White Hardware
 - INNERGY Thermal Sash Reinforcement
 - Extruded Full Screen (White) with BetterVue Screen Mesh
 - No Screen Mullion
 - Screen Shipped Separately
 - Top Glass:
 - ComforTech DLA-UV
 - Single Strength Glass (3/32" per pane)
 - 3/4" IG Thickness
 - Colonial Contoured Grid - 2V x 0H
 - White Grids
 - Bottom Glass:
 - ComforTech DLA-UV
 - Single Strength Glass (3/32" per pane)
 - 3/4" IG Thickness
 - Graphite Foam Insulation
 - Integral Nail Fin
 - Frame Depth with Accessory: 2 1/16"
- TAG # RIGHT & LEFT ELEV. (SUNROOM)



Due to variances in color and manufacturing process, image shown may vary from final product. Refer to color samples when making color selection.

3

VINYL WINDOW

- Price per One

Warning - This line is out of date, in an error state, or not saved correctly.

In order to continue, you must edit and save the line, correcting any configuration issues.

- Product Options -

- Endure Window - EN600 Series

- 601 - Double Hung

- White

- Opening Size: 25" x 46"

- Unit Size: 24 1/2" x 45 1/2"

- Compound Tension Balance System

- Snap-In Frame Sash Stops

- Double Profile DA Locks

- White Vent Locks

- White Hardware

- INNERGY Thermal Sash Reinforcement

- Extruded Full Screen (White) with BetterVue Screen Mesh

- No Screen Mullion

- Screen Shipped Separately

- Top Glass:

- ComforTech DLA-UV

- Single Strength Glass (3/32" per pane)

- 3/4" IG Thickness

- Colonial Contoured Grid - 2V x 0H

- White Grids

- Bottom Glass:

- ComforTech DLA-UV

- Single Strength Glass (3/32" per pane)

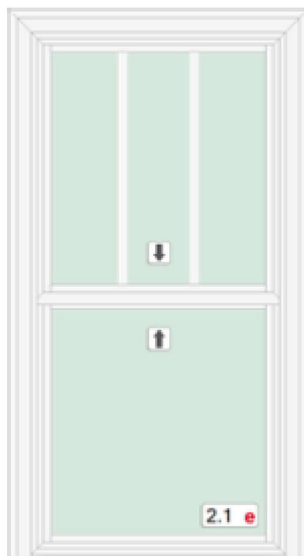
- 3/4" IG Thickness

- Graphite Foam Insulation

- Integral Nail Fin

- Frame Depth with Accessory: 2 1/16"

TAG # REAR ELEV, (SUNROOM)



Due to variances in color and manufacturing process, image shown may vary from final product. Refer to color samples when making color selection.

WINDOW MEASURE SHEET							
WINDOW #	WIDTH	HEIGHT	WINDOW TYPE	FRAME MATERIAL	TOP SASH GRID PATTERN	BOTTOM SASH GRID PATTERN	NOTES
1	30"	46"	Double Hung	Vinyl	2V x 0H	n/a	
2	30"	46"	Double Hung	Vinyl	2V x 0H	n/a	
3	30"	46"	Double Hung	Vinyl	2V x 0H	n/a	
4	25"	46"	Double Hung	Vinyl	2V x 0H	n/a	
5	25"	46"	Double Hung	Vinyl	2V x 0H	n/a	
6	n/a	n/a	n/a	n/a	n/a	n/a	Window to be eliminated. Replaced with 6' slider. Reducing the width of the following windows (4,5,7,8). Please refer to door schedule below.
7	25"	46"	Double Hung	Vinyl	2V x 0H	n/a	
8	25"	46"	Double Hung	Vinyl	2V x 0H	n/a	
9	30"	46"	Double Hung	Vinyl	2V x 0H	n/a	
10	30"	46"	Double Hung	Vinyl	2V x 0H	n/a	
11	30"	46"	Double Hung	Vinyl	2V x 0H	n/a	











1

2

3





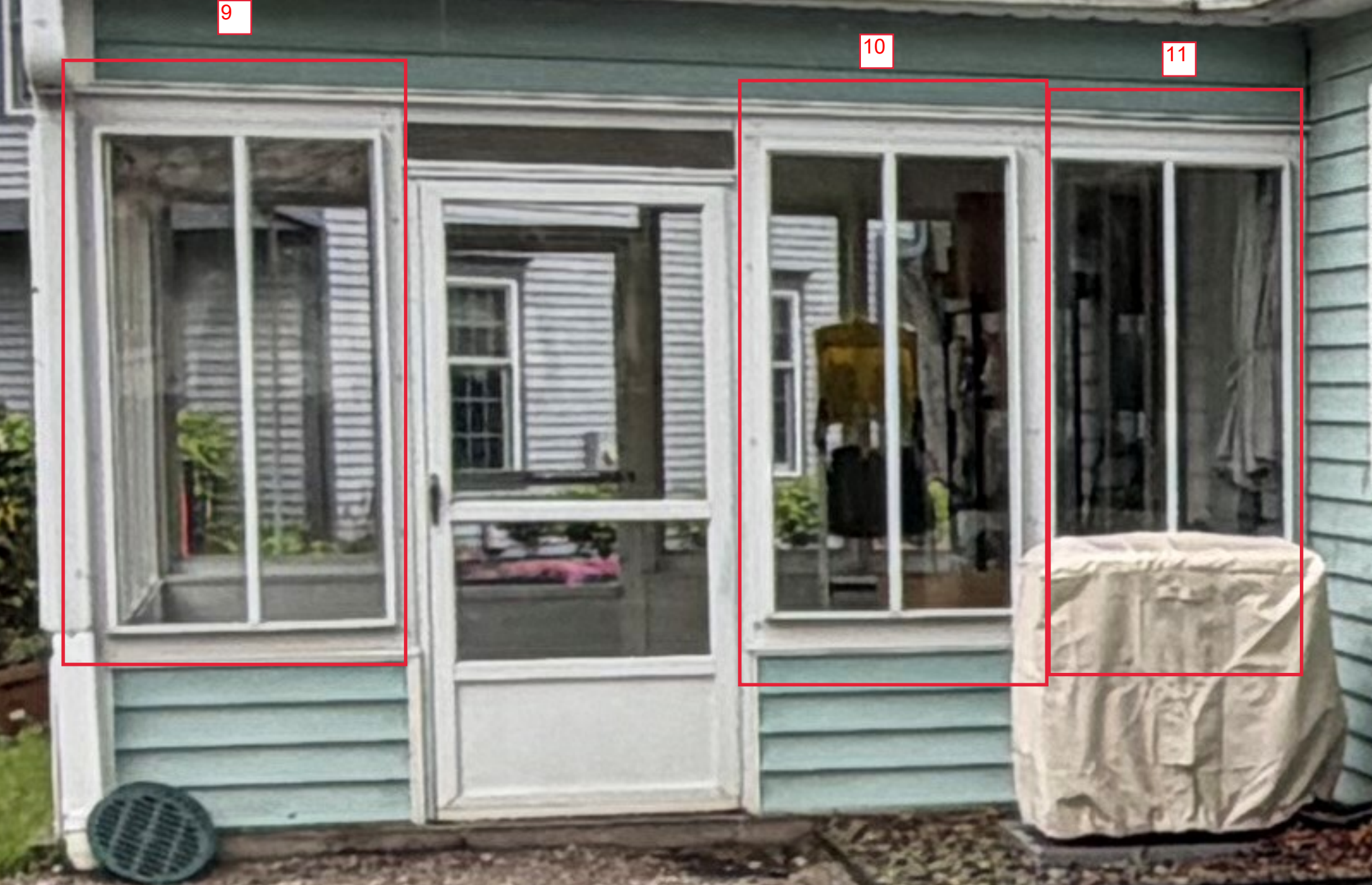
4

5

6

7

8



LAP SIDING

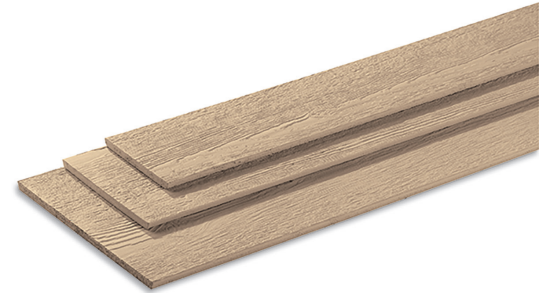
Cedar Texture

Products:

- LP® SmartSide® 38 Series Lap Siding
- LP® SmartSide® ExpertFinish® 38 Series Lap Joint Siding

DESIGNED & RATED FOR EXTERIOR USE

May be attached direct to studs; see application instructions for fastening and installation requirements
APA-Certified Lap Siding



Substrate:

- Features engineered wood strand technology with precisely-sized, shaped, and layered wood strands from Aspen logs
- Made using LP's proprietary SmartGuard® process, which includes industrial-grade resins, water-resistant waxes, zinc borate, and a resin-saturated overlay



Application Instructions:

LPCorp.com/Literature



Sustainability Info:

- ASTM-Verified Carbon Negative
- Made with wood, a renewable resource, vetted through strict Sustainable Forestry Initiative® (SFI®) standards



Primed Specifications and PIDs:

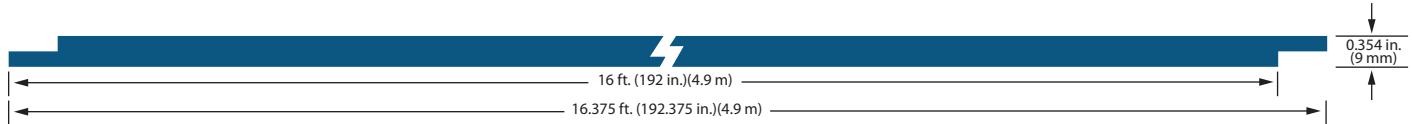
38 SERIES CEDAR TEXTURE LAP



PRODUCT	LENGTH	ACTUAL WIDTH	THICKNESS	MAX SPAN RATING	WEIGHT	PID
38 Series Cedar Texture Lap	16 ft. (192 in.) (4.9 m)	5.84 in. (148 mm)	0.354 in. (9 mm)	16 in.	1.5 PSF	25796
	16 ft. (192 in.) (4.9 m)	7.84 in. (199 mm)	0.354 in. (9 mm)	16 in.	1.5 PSF	25797
	16 ft. (192 in.) (4.9 m)	11.84 in. (301 mm)	0.354 in. (9 mm)	16 in.	1.5 PSF	25799

ExpertFinish® Color Specifications and PIDs:

38 SERIES EXPERTFINISH® CEDAR TEXTURE LAP JOINT SIDING



COLOR	LENGTH	ACTUAL WIDTH	THICKNESS	MAX SPAN RATING	WEIGHT	PID
Snowscape White	16 ft. (192 in.) (4.9 m)	5.84 in. (148 mm)	0.354 in. (9 mm)	16 in.	1.5 PSF	41715
	16 ft. (192 in.) (4.9 m)	7.84 in. (199 mm)	0.354 in. (9 mm)	16 in.	1.5 PSF	42271
Sand Dunes	16 ft. (192 in.) (4.9 m)	5.84 in. (148 mm)	0.354 in. (9 mm)	16 in.	1.5 PSF	41841
	16 ft. (192 in.) (4.9 m)	7.84 in. (199 mm)	0.354 in. (9 mm)	16 in.	1.5 PSF	42272
Desert Stone	16 ft. (192 in.) (4.9 m)	5.84 in. (148 mm)	0.354 in. (9 mm)	16 in.	1.5 PSF	41842
	16 ft. (192 in.) (4.9 m)	7.84 in. (199 mm)	0.354 in. (9 mm)	16 in.	1.5 PSF	42274
Quarry Gray	16 ft. (192 in.) (4.9 m)	5.84 in. (148 mm)	0.354 in. (9 mm)	16 in.	1.5 PSF	41837
	16 ft. (192 in.) (4.9 m)	7.84 in. (199 mm)	0.354 in. (9 mm)	16 in.	1.5 PSF	42288
Prairie Clay	16 ft. (192 in.) (4.9 m)	5.84 in. (148 mm)	0.354 in. (9 mm)	16 in.	1.5 PSF	41834
	16 ft. (192 in.) (4.9 m)	7.84 in. (199 mm)	0.354 in. (9 mm)	16 in.	1.5 PSF	42278
Terra Brown	16 ft. (192 in.) (4.9 m)	5.84 in. (148 mm)	0.354 in. (9 mm)	16 in.	1.5 PSF	41845
	16 ft. (192 in.) (4.9 m)	7.84 in. (199 mm)	0.354 in. (9 mm)	16 in.	1.5 PSF	42277
Harvest Honey	16 ft. (192 in.) (4.9 m)	5.84 in. (148 mm)	0.354 in. (9 mm)	16 in.	1.5 PSF	45327
	16 ft. (192 in.) (4.9 m)	7.84 in. (199 mm)	0.354 in. (9 mm)	16 in.	1.5 PSF	45284
Timberland Suede	16 ft. (192 in.) (4.9 m)	5.84 in. (148 mm)	0.354 in. (9 mm)	16 in.	1.5 PSF	41843
	16 ft. (192 in.) (4.9 m)	7.84 in. (199 mm)	0.354 in. (9 mm)	16 in.	1.5 PSF	42269
Garden Sage	16 ft. (192 in.) (4.9 m)	5.84 in. (148 mm)	0.354 in. (9 mm)	16 in.	1.5 PSF	45328
	16 ft. (192 in.) (4.9 m)	7.84 in. (199 mm)	0.354 in. (9 mm)	16 in.	1.5 PSF	45325
Redwood Red	16 ft. (192 in.) (4.9 m)	5.84 in. (148 mm)	0.354 in. (9 mm)	16 in.	1.5 PSF	41840
	16 ft. (192 in.) (4.9 m)	7.84 in. (199 mm)	0.354 in. (9 mm)	16 in.	1.5 PSF	42293
Tundra Gray	16 ft. (192 in.) (4.9 m)	5.84 in. (148 mm)	0.354 in. (9 mm)	16 in.	1.5 PSF	41846
	16 ft. (192 in.) (4.9 m)	7.84 in. (199 mm)	0.354 in. (9 mm)	16 in.	1.5 PSF	42300
Summit Blue	16 ft. (192 in.) (4.9 m)	5.84 in. (148 mm)	0.354 in. (9 mm)	16 in.	1.5 PSF	41844
	16 ft. (192 in.) (4.9 m)	7.84 in. (199 mm)	0.354 in. (9 mm)	16 in.	1.5 PSF	42273
Rapids Blue	16 ft. (192 in.) (4.9 m)	5.84 in. (148 mm)	0.354 in. (9 mm)	16 in.	1.5 PSF	41839
	16 ft. (192 in.) (4.9 m)	7.84 in. (199 mm)	0.354 in. (9 mm)	16 in.	1.5 PSF	42287
Cavern Steel	16 ft. (192 in.) (4.9 m)	5.84 in. (148 mm)	0.354 in. (9 mm)	16 in.	1.5 PSF	41835
	16 ft. (192 in.) (4.9 m)	7.84 in. (199 mm)	0.354 in. (9 mm)	16 in.	1.5 PSF	42301
Midnight Shadow	16 ft. (192 in.) (4.9 m)	5.84 in. (148 mm)	0.354 in. (9 mm)	16 in.	1.5 PSF	45329
	16 ft. (192 in.) (4.9 m)	7.84 in. (199 mm)	0.354 in. (9 mm)	16 in.	1.5 PSF	45326
Abyss Black	16 ft. (192 in.) (4.9 m)	5.84 in. (148 mm)	0.354 in. (9 mm)	16 in.	1.5 PSF	41774
	16 ft. (192 in.) (4.9 m)	7.84 in. (199 mm)	0.354 in. (9 mm)	16 in.	1.5 PSF	42279
Washed White	16 ft. (192 in.) (4.9 m)	7.84 in. (199 mm)	0.354 in. (9 mm)	16 in.	1.5 PSF	46731
	16 ft. (192 in.) (4.9 m)	7.84 in. (199 mm)	0.354 in. (9 mm)	16 in.	1.5 PSF	46730
Smoky Slate	16 ft. (192 in.) (4.9 m)	7.84 in. (199 mm)	0.354 in. (9 mm)	16 in.	1.5 PSF	46730
	16 ft. (192 in.) (4.9 m)	7.84 in. (199 mm)	0.354 in. (9 mm)	16 in.	1.5 PSF	46729
Bonsai Black	16 ft. (192 in.) (4.9 m)	7.84 in. (199 mm)	0.354 in. (9 mm)	16 in.	1.5 PSF	46729
	16 ft. (192 in.) (4.9 m)	7.84 in. (199 mm)	0.354 in. (9 mm)	16 in.	1.5 PSF	46728
Weathered Walnut	16 ft. (192 in.) (4.9 m)	7.84 in. (199 mm)	0.354 in. (9 mm)	16 in.	1.5 PSF	46728
	16 ft. (192 in.) (4.9 m)	7.84 in. (199 mm)	0.354 in. (9 mm)	16 in.	1.5 PSF	46727
Aged Amber	16 ft. (192 in.) (4.9 m)	7.84 in. (199 mm)	0.354 in. (9 mm)	16 in.	1.5 PSF	46727
	16 ft. (192 in.) (4.9 m)	7.84 in. (199 mm)	0.354 in. (9 mm)	16 in.	1.5 PSF	46726
Saffron Cedar	16 ft. (192 in.) (4.9 m)	7.84 in. (199 mm)	0.354 in. (9 mm)	16 in.	1.5 PSF	46726

NEW NATURALS COLLECTION™ LAP

See LPCorp.com for product, warranty, and installation details. Metric units are rounded. PSF = Pounds Per Square Foot
Contact your LP Sales Rep for product availability.
All colors shown are representative and may not be an exact match.

FS Fixed Skylight

Technical Product Data Sheet



Description

- FS Fixed Deck Mount Skylight that mounts to the roof deck. Fixed skylight, provided with various glazings, is manufactured with a white finished (optional stain grade) pine frame/sash, a neutral gray aluminum profile (optional copper) and an insulated glass unit.

Installation

- Designated top, bottom, and sides for installation in one direction.
- Single unit applications or combination flashing for multiple skylight applications, over/under, side by side.
- 14 degrees to 85 degrees, use standard installation procedure.

Flashings

- EDL – Engineered neutral gray flashing for single installation with thin roofing material ($\frac{1}{2}$ " max) for roof pitches from 14-85 degrees.
- EDW – Engineered neutral gray flashing for single installation with tile (over $\frac{3}{4}$ ") roofing material for roof pitches from 14-85 degrees.
- EDM - Engineered neutral gray flashing for single installation with metal roof ($1\frac{1}{2}$ "- $1\frac{3}{4}$ " max profile) for roof pitches from 14-85 degrees.
- EKL- Engineered neutral gray flashing for multiple skylights with thin roofing material (Max. $\frac{5}{16}$ ") on roof pitches from 14 to 85 degrees.
- EKW – Engineered neutral gray flashing for multiple skylights with high profile roofing material (Max. $3\frac{1}{2}$ ") on roof pitches from 15 to 85 degrees.
- Applications less than 14-degree roof pitch - flashing provided by others.

Interior Accessories

- FSCH - Solar powered Room darkening - double pleated shade.
- FSLH - Solar powered Light filtering - single pleated shade.

Type Sign

- Example: FS C01 0004E 01BM05
- Located on bottom of interior frame.



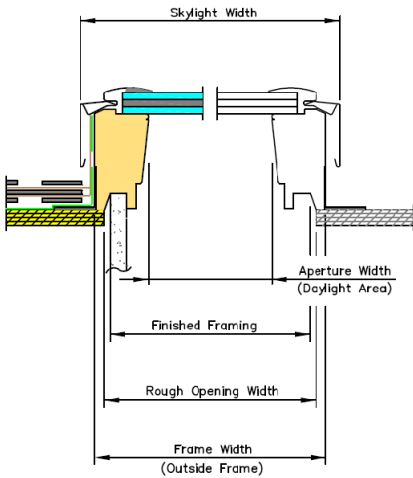
Standard Sizes

- A06, C01, C04, C06, C08, C12, D26, D06, M02, M04, M06, M08, S01, S06
- No custom sizes available.

Warranty

- **Installation** – 10 years from the date of purchase; VELUX No Leak Warranty warrants skylight installation. Must be installed with VELUX flashings and included adhesive underlayment.
- **Skylight** – 10 years from the date of purchase; VELUX warrants that the skylight will be free from defects in material and workmanship.
- **Glass Seal** – 20 years from the date of purchase; VELUX warrants that the insulated glass pane will not develop a material obstruction of vision due to failure of the glass seal.
- **Hail Warranty** – 10 years from the date of purchase; VELUX warrants only laminated glass panes against hail breakage.
- **Accessories and Electrical Components** – 5 years from the date of purchase; VELUX warrants Velux shades and control systems will be free from defects in material and workmanship.

Cross Section

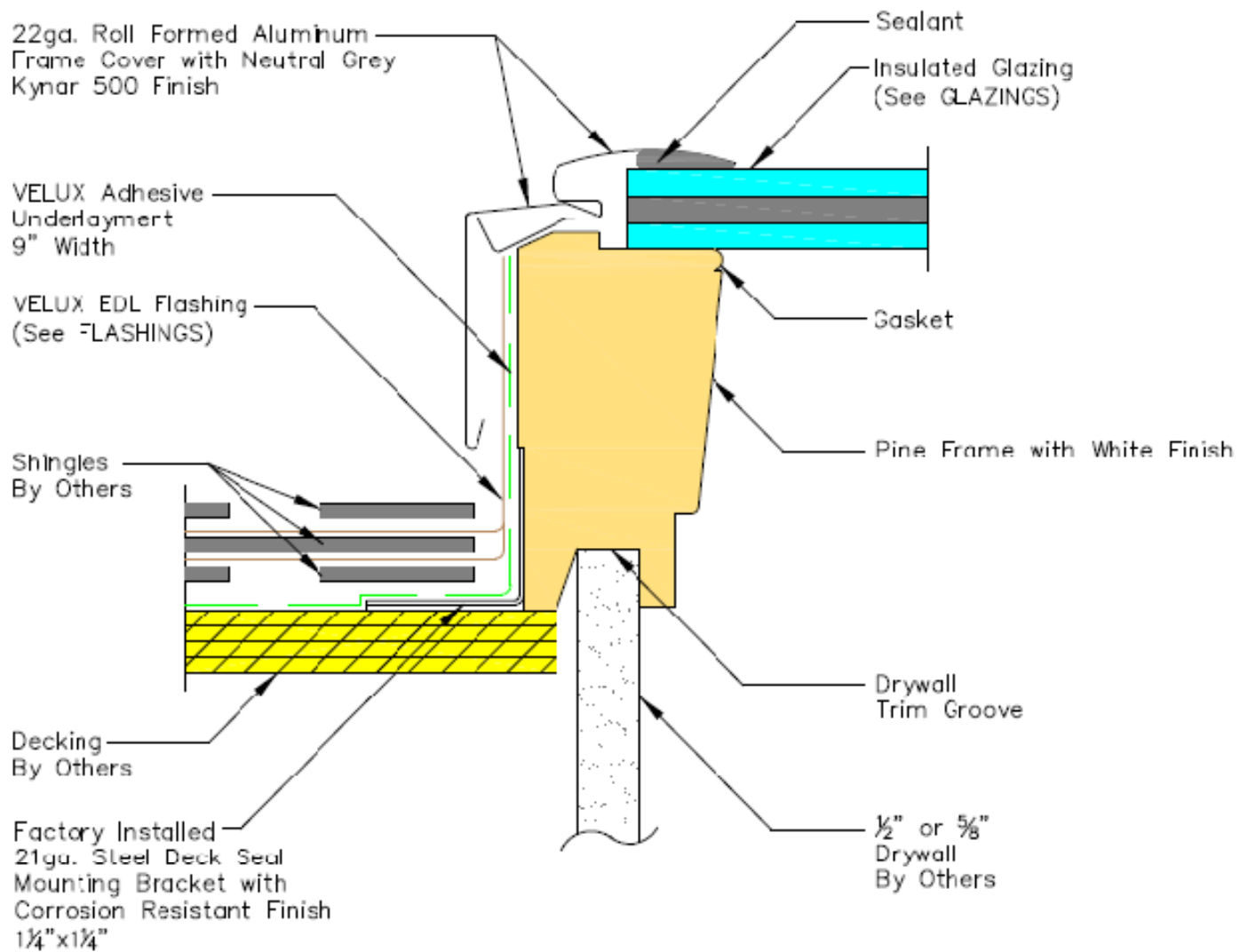


Size	Rough Opening Width	Frame Width	Frame Aperture Width	Skylight Width	Rough Opening Height	Frame Height	Frame Aperture Height	Skylight Height	Daylight Area (Sq. Feet)
A06	14 1/2	15 1/4	11 15/16	16 1/8	45 3/4	46 1/4	42 15/16	47 1/4	3.56
C01	21	21 1/2	18 3/16	22 3/8	26 7/8	27 3/8	24 1/16	28 3/8	3.03
C04	21	21 1/2	18 3/16	22 3/8	37 7/8	38 3/8	35 1/16	39 3/8	4.43
C06	21	21 1/2	18 3/16	22 3/8	45 3/4	46 1/4	42 15/16	47 1/4	5.43
C08	21	21 1/2	18 3/16	22 3/8	54 7/16	54 15/16	51 5/8	55 15/16	6.52
C12	21	21 1/2	18 3/16	22 3/8	70 1/4	70 3/4	67 7/16	71 3/4	8.52
D26	22 1/2	23 1/2	19 15/16	24 1/16	22 15/16	23 7/16	20 1/8	24 7/16	2.78
D06	22 1/2	23 1/2	19 15/16	24 1/16	45 3/4	46 1/4	42 15/16	47 1/4	5.94
M02	30 1/16	30 9/16	27 1/4	31 7/16	30	30 1/2	27 3/16	31 1/2	5.15
M04	30 1/16	30 9/16	27 1/4	31 7/16	37 7/8	38 3/8	35 1/16	39 3/8	6.64
M06	30 1/16	30 9/16	27 1/4	31 7/16	45 3/4	46 1/4	42 15/16	47 1/4	8.13
M08	30 1/16	30 9/16	27 1/4	31 7/16	54 7/16	54 15/16	51 5/8	55 15/16	9.77
S01	44 1/4	44 3/4	41 7/16	45 9/16	26 7/8	27 3/8	24 1/16	28 3/8	6.92
S06	44 1/4	44 3/4	41 7/16	45 9/16	45 3/4	46 1/4	42 15/16	47 1/4	12.36


Glazings and Certification

Glazing	NFRC U-factor	NFRC SHGC	NFRC Vt	Hallmark 426-H-672	IAPMO-ES ER 199	Fla Prod Approval 13303	HVHZ	TDI
04 Laminated -2.3 mm laminated (0.76 mm interlayer) with tempered Low E366 outer pane.	0.44	0.26	0.60	√	√	√		SK-03
06 Impact – 2.3 mm laminated (2.28 mm interlayer) with tempered Low E366 outer pane for hurricane areas.	0.41	0.26	0.60	√	√	√		SK-14
08 White laminated -2.3 mm Laminated (0.76mm white interlayer) with tempered Low E366 outer pane.	0.44	0.25	0.42	√	√	√		SK-03
10 Snowload - 3 mm laminated (0.76 mm interlayer) with tempered Low E366 outer pane.	0.48	0.27	0.45	√				

Consult with Customer Service for special glazing options.



Corner keys made of ASA Luran in neutral grey finish.



SLATE
TERRA CUT™

STONE DIMENSIONS

Width: 3" - 22"

Height: 2" - 8"

Depth: 3/4" - 2"



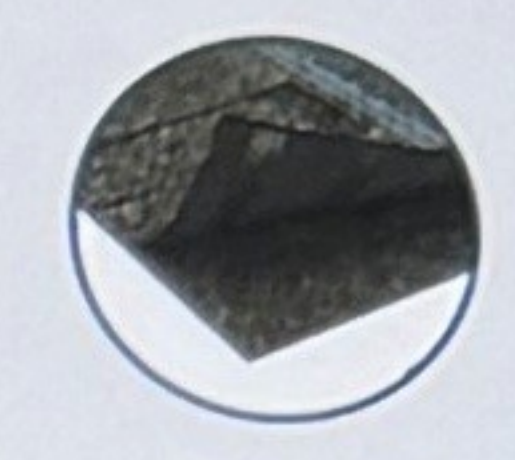
Landmark | Shown in Moiré Black

certainteed
SAINT-GOBAIN

LANDMARK
Designer Shingles



CertaSeal™
Seals roofs tight against wind and weather



QuadraBond™
Secures shingle layers together at four points for greater performance



NailTrak®
Allows for fast & accurate installation with enhanced nail lines



StreakFighter®
Protects shingles from unsightly algae

IMPACT RESISTANT
UL 2218 Class 3

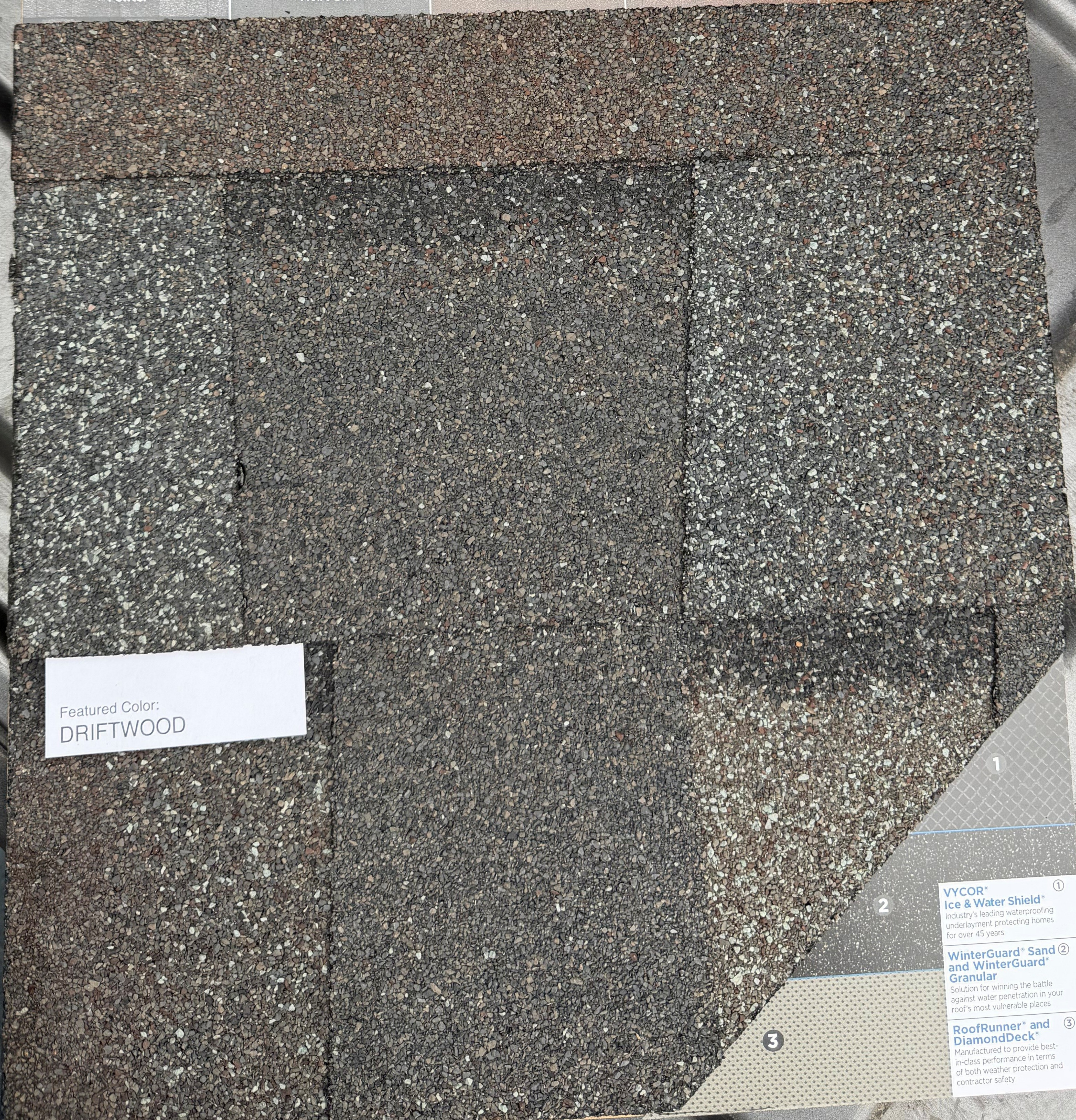


Scan code for more information

LIFETIME LIMITED WARRANTY*

*See actual limited warranty for specific details and limitations at certainteed.com/warranty. Because of their size, the swatches on this sample cannot accurately depict the color, clarity and variation of our actual blends. Before you buy, ask to see a full shingle. All colors may not be available. Consult your Certainteed dealer for color availability. Latin Central, North Central, Central (2024)

Color Discontinued					
Silver Birch <small>(Not available in all areas)</small>	Cobblestone Gray	Colonial Slate	Georgetown Gray	Weathered Wood	Driftwood
Pewter	Moiré Black	Heather Blend	Burnt Sienna	Resawn Shake	



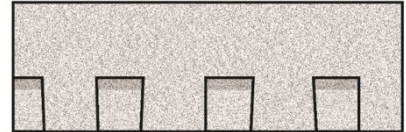
Featured Color:
DRIFTWOOD

- 1 **VYCOR® Ice & Water Shield®**
Industry's leading waterproofing underlayment protecting homes for over 45 years
- 2 **WinterGuard® Sand and WinterGuard® Granular**
Solution for winning the battle against water penetration in your roof's most vulnerable places
- 3 **RoofRunner® and DiamondDeck®**
Manufactured to provide best-in-class performance in terms of both weather protection and contractor safety

Landmark® Shingles

PRODUCT INFORMATION

Landmark® shingles reflect the same high manufacturing standards and superior warranty protection as the rest of CertainTeed's line of roofing products. Landmark (and Algae Resistant-AR) shingles are built with the industry's toughest fiber glass mat base, and their strict dimensional tolerance assures consistency. Complex granule color blends and subtle shadow lines produce a distinctive color selection. Landmark is produced with the unique NailTrak® nailing feature.



Landmark algae-resistant (AR) shingles are algae-resistant and help protect against dark or black discoloration, sometimes called staining or streaking, caused by blue-green algae (*gloeocapsa magma*). AR shingles are not available in all regions.

Colors: Please refer to the product brochure or CertainTeed website for the colors available in your region.

Limitations: Use on roofs with slopes greater than 2" per foot. Low-slope applications (2:12 to < 4:12) require additional underlayment. In areas where icing along eaves can cause the back-up of water, apply CertainTeed WinterGuard® Waterproofing Shingle Underlayment, or its equivalent, according to application instructions provided with the product and on the shingle package.

Product Composition: Landmark shingles are composed of a fiber glass mat base. Ceramic-coated mineral granules are tightly embedded in carefully refined, water-resistant asphalt. Two pieces of the shingle are firmly laminated together in a special, tough asphaltic cement. All Landmark shingles have self-sealing adhesive strips.

Applicable Standards

ASTM D3018 Type I	ICC-ES ESR-1389 and ESR-3537
ASTM D3462	CSA Standard A123.5 (Regional)
ASTM E108 Class A Fire Resistance	Miami-Dade Product Control Approved (Regional)
ASTM D3161 Class F Wind Resistance	Florida Product Approval # FL5444
ASTM D7158 Class H Wind Resistance	Meets TDI Windstorm Requirements
UL 790 Class A Fire Resistance	UL 2218 Class 3 Impact Resistance (at time of manufacture)

Technical Data:

	Landmark (and AR)
Weight/Square	211 to 225 lb *
Dimensions (overall)	13 1/4" x 38 3/4"
Weather Exposure	5 5/8"
Shingles per square	65
Bundles per square	3
Approximate Coverage per square	98.4 square feet

*Dependent on manufacturing location. Weight per 100 square feet.

INSTALLATION

Detailed installation instructions are supplied on each bundle of Landmark shingles and must be followed. Separate application sheets may also be obtained from CertainTeed.

Hips and Ridges: For capping hip and ridge apply CertainTeed Shadow Ridge®, Cedar Crest® or Mountain Ridge® shingles of a like color.

MAINTENANCE

These shingles do not require maintenance when installed according to manufacturer's application instructions. However, to protect the investment, any roof should be routinely inspected at least once a year. Older roofs should be looked at more frequently.

WARRANTY

Landmark (and AR) shingles carry a lifetime limited, transferable warranty to the consumer against manufacturing defects when applied to stated CertainTeed application instructions for this product. In addition, Landmark (and AR) carry up to 10-years of SureStart™ Protection. Landmark AR shingles carry a 25-year algae resistance warranty if installed with the CertainTeed Hip & Ridge accessories mentioned above. For specific warranty details and limitations, refer to the warranty itself (available from the local supplier, roofing contractor or on-line at www.certainteed.com).

TECHNICAL SUPPORT

Technical Service Department: 800-345-1145
e-mail: RPGTS@saint-gobain.com

FOR MORE INFORMATION

Customer Experience Team: 800-233-8990
e-mail: gethelp@saint-gobain.com
Web site: www.certainteed.com

CertainTeed LLC
20 Moores Road
Malvern, PA 19355



TRIM

Cedar Texture

Products:

- LP® SmartSide® 540 Series Trim
- LP® SmartSide® ExpertFinish® 540 Series Trim

DESIGNED & RATED FOR EXTERIOR USE



Cedar Texture

Substrate:

- Features engineered wood strand technology with precisely-sized, shaped, and layered wood strands from Aspen logs
- Made using LP's proprietary SmartGuard® process, which includes industrial-grade resins, water-resistant waxes, zinc borate, and a resin-saturated overlay



Application Instructions:
LP Corp.com/Literature

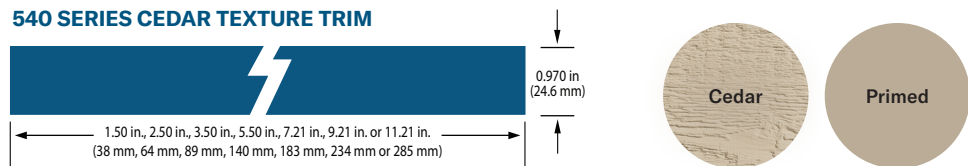
Sustainability Info:

- ASTM-Verified Carbon Negative
- Made with wood, a renewable resource, vetted through strict Sustainable Forestry Initiative® (SFI®) standards



Primed Specifications and PIDs:

540 SERIES CEDAR TEXTURE TRIM



PRODUCT	LENGTH	ACTUAL WIDTH	THICKNESS	WEIGHT	PID
540 Series Cedar Texture Trim	16 ft. (192 in.) (4.9 m)	1.50 in. (38 mm)	0.970 in. (24.6 mm)	3 PSF	25886*
	16 ft. (192 in.) (4.9 m)	2.50 in. (64 mm)	0.970 in. (24.6 mm)	3 PSF	25887*
	16 ft. (192 in.) (4.9 m)	3.50 in. (89 mm)	0.970 in. (24.6 mm)	3 PSF	25888
	16 ft. (192 in.) (4.9 m)	5.50 in. (140 mm)	0.970 in. (24.6 mm)	3 PSF	25890
	16 ft. (192 in.) (4.9 m)	7.21 in. (183 mm)	0.970 in. (24.6 mm)	3 PSF	25891
	16 ft. (192 in.) (4.9 m)	9.21 in. (234 mm)	0.970 in. (24.6 mm)	3 PSF	25892
	16 ft. (192 in.) (4.9 m)	11.21 in. (285 mm)	0.970 in. (24.6 mm)	3 PSF	25893

*Special order item; Requires minimum quantity and extended lead times. See LP Corp.com for product, warranty, and installation details. Metric units are rounded. PSF = Pounds Per Square Foot

ExpertFinish® Color Specifications and PIDs:



COLOR	LENGTH	THICKNESS	WEIGHT
All colors	16 ft. (192 in.) (4.9 m)	0.970 in. (24.6 mm)	3 PSF

COLOR	ACTUAL WIDTH	PID
Snowscape White	3.50 in. (89 mm)	42312
	5.50 in. (140 mm)	42316
	7.21 in. (183 mm)	46316
	9.21 in. (234 mm)	46332
	11.21 in. (285 mm)	46348
Sand Dunes	3.50 in. (89 mm)	46283
	5.50 in. (140 mm)	46299
	7.21 in. (183 mm)	46315
	9.21 in. (234 mm)	46331
	11.21 in. (285 mm)	46347
Desert Stone	3.50 in. (89 mm)	46275
	5.50 in. (140 mm)	46291
	7.21 in. (183 mm)	46307
	9.21 in. (234 mm)	46323
	11.21 in. (285 mm)	46339
Quarry Gray	3.50 in. (89 mm)	46280
	5.50 in. (140 mm)	46296
	7.21 in. (183 mm)	46312
	9.21 in. (234 mm)	46328
	11.21 in. (285 mm)	46344
Prairie Clay	3.50 in. (89 mm)	46279
	5.50 in. (140 mm)	46295
	7.21 in. (183 mm)	46311
	9.21 in. (234 mm)	46327
	11.21 in. (285 mm)	46343
Terra Brown	3.50 in. (89 mm)	46286
	5.50 in. (140 mm)	46302
	7.21 in. (183 mm)	46318
	9.21 in. (234 mm)	46334
	11.21 in. (285 mm)	46350
Harvest Honey	3.50 in. (89 mm)	46277
	5.50 in. (140 mm)	46293
	7.21 in. (183 mm)	46309
	9.21 in. (234 mm)	46325
	11.21 in. (285 mm)	46341
Timberland Suede	3.50 in. (89 mm)	46287
	5.50 in. (140 mm)	46303
	7.21 in. (183 mm)	46319
	9.21 in. (234 mm)	46335
	11.21 in. (285 mm)	46351
Garden Sage	3.50 in. (89 mm)	46276
	5.50 in. (140 mm)	46292
	7.21 in. (183 mm)	46308
	9.21 in. (234 mm)	46324
	11.21 in. (285 mm)	46340

COLOR	ACTUAL WIDTH	PID
Redwood Red	3.50 in. (89 mm)	46282
	5.50 in. (140 mm)	46298
	7.21 in. (183 mm)	46314
	9.21 in. (234 mm)	46330
	11.21 in. (285 mm)	46346
Tundra Gray	3.50 in. (89 mm)	46288
	5.50 in. (140 mm)	46304
	7.21 in. (183 mm)	46320
	9.21 in. (234 mm)	46336
	11.21 in. (285 mm)	46352
Summit Blue	3.50 in. (89 mm)	46285
	5.50 in. (140 mm)	46301
	7.21 in. (183 mm)	46317
	9.21 in. (234 mm)	46333
	11.21 in. (285 mm)	46349
Rapids Blue	3.50 in. (89 mm)	46281
	5.50 in. (140 mm)	46297
	7.21 in. (183 mm)	46313
	9.21 in. (234 mm)	46329
	11.21 in. (285 mm)	46345
Cavern Steel	3.50 in. (89 mm)	46274
	5.50 in. (140 mm)	46290
	7.21 in. (183 mm)	46306
	9.21 in. (234 mm)	46322
	11.21 in. (285 mm)	46338
Midnight Shadow	3.50 in. (89 mm)	46278
	5.50 in. (140 mm)	46294
	7.21 in. (183 mm)	46310
	9.21 in. (234 mm)	46326
	11.21 in. (285 mm)	46342
Abyss Black	3.50 in. (89 mm)	46273
	5.50 in. (140 mm)	46289
	7.21 in. (183 mm)	46305
	9.21 in. (234 mm)	46321
	11.21 in. (285 mm)	46337
Washed White	3.50 in. (89 mm)	46803
	5.50 in. (140 mm)	46827
Smoky Slate	3.50 in. (89 mm)	46801
	5.50 in. (140 mm)	46825
Bonsai Black	3.50 in. (89 mm)	46799
	5.50 in. (140 mm)	46823
Weathered Walnut	3.50 in. (89 mm)	46797
	5.50 in. (140 mm)	46821
Aged Amber	3.50 in. (89 mm)	46795
	5.50 in. (140 mm)	46819
Saffron Cedar	3.50 in. (89 mm)	46793
	5.50 in. (140 mm)	46817

NEW NATURALS COLLECTION™ TRIM

See LPCorp.com for product, warranty, and installation details. Metric units are rounded. PSF = Pounds Per Square Foot
 Contact your LP Sales Rep for product availability.
 All colors shown are representative and may not be an exact match.

TRIM

Brushed Smooth

Products:

LP® SmartSide® ExpertFinish® 190 Series Trim
DESIGNED & RATED FOR EXTERIOR USE

Substrate:

- Features engineered wood strand technology with precisely-sized, shaped, and layered wood strands from Aspen logs
- Made using LP's proprietary SmartGuard® process, which includes industrial-grade resins, water-resistant waxes, zinc borate, and a resin-saturated overlay



Brushed Smooth

Application Instructions:

LP Corp.com/Literature

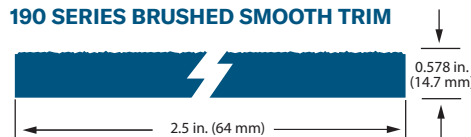


Sustainability Info:

- ASTM-Verified Carbon Negative
- Made with wood, a renewable resource, vetted through strict Sustainable Forestry Initiative® (SFI®) standards



ExpertFinish® Color Specifications and PIDs:



PRODUCT	LENGTH	ACTUAL WIDTH	THICKNESS	WEIGHT
190 Series Brushed Smooth Trim	16 ft. (192 in.) (4.9 m)	2.50 in. (64 mm)	0.578 in. (14.7 mm)	2 PSF

COLOR	PID
Snowscape White	45779
Sand Dunes	45778
Desert Stone	45770
Quarry Gray	45775
Prairie Clay	45774
Terra Brown	45781
Harvest Honey	45772
Timberland Suede	45782

COLOR	PID
Garden Sage	45771
Redwood Red	45777
Tundra Gray	45783
Summit Blue	45780
Rapids Blue	45776
Cavern Steel	45769
Midnight Shadow	45773
Abyss Black	45768



NEW NATURALS COLLECTION™ TRIM

COLOR	PID
Washed White	46767
Smoky Slate	46765
Bonsai Black	46763
Weathered Walnut	46761
Aged Amber	46759
Saffron Cedar	46757

See LPCorp.com for product, warranty, and installation details. Metric units are rounded. PSF = Pounds Per Square Foot
Contact your LP Sales Rep for product availability.
All colors shown are representative and may not be an exact match.

Name #1 QTY 1

Garage Door Size **Width** **Height**

Double Wide 16' x 7' 16' 0" 7' 0"

Door Style

Carriage House Garage Door

Door Color **Overlay Color**

Charcoal Charcoal

Material & Construction **Insulation**

Interior & Exterior Steel Section 2" Residential & Commercial Steel Door

Design **Overlay** **Arch Style** **Invert** **Decorative Handles**

Flush Design #40 Not Available Not Available No

Decorative Hinges

No

Window Type **Window Design**

American Traditions Plain

Glass Thickness **Glass Type**

1/2" Insulated Glass Clear over Clear

Window Sections

Top Section

Model#9240 Show Points Show Door Show House Square

#1 **Add Door** **Copy Door** **Remove Door** **Reset Points**

Upload House **Download** **Save Project**



7

ENTRY DOOR

- Product Options -

- Signet Single Entry Door in FrameSaver Frame
- 36" x 80" Nominal Size
- Unit Size: 37 9/16" x 81 11/16"
- Frame Depth: 4 9/16"
- 2" Standard Brickmold
- Right Hand Inswing - Inside Looking Out
- 460 Style Signet Smooth Fiberglass Door
- Clear Glass with ComforTech DLA-UV
- Smooth Plugless Trim (Signet)
- Snow Mist White Inside and Outside

- Hardware

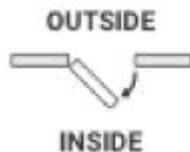
- Georgian Lockset - Prep Only (2 3/4" Backset)
- Aged Bronze Strike Plates

- Frame

- Snow Mist White Inside Frame
 - Bronze ZAC Auto-Adjusting Threshold (5 5/8" Depth)
 - Aged Bronze Ball Bearing Hinges
- TAG # RIGHT ELEV. (SUNROOM)

Outside Looking In

Due to variances in color and manufacturing process, image shown may vary from final product. Refer to color samples when making color selection.





6

ENTRY DOOR

- Product Options -

- Signet Single Entry Door in FrameSaver Frame
- 36" x 80" Nominal Size
- Unit Size: 37 9/16" x 81 11/16"
- Frame Depth: 4 9/16"
- 2" Standard Brickmold
- Left Hand Inswing - Inside Looking Out
- 460 Style Signet Smooth Fiberglass Door
- Clear Glass with ComforTech DLA-UV
- Smooth Plugless Trim (Signet)
- Snow Mist White Inside and Outside

- Hardware

- Georgian Lockset - Prep Only (2 3/4" Backset)
- Aged Bronze Strike Plates

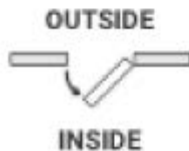
- Frame

- Snow Mist White Inside Frame
- Bronze ZAC Auto-Adjusting Threshold (5 5/8" Depth)
- Aged Bronze Ball Bearing Hinges

TAG # LEFT ELEV. (SUNROOM)

Outside Looking In

Due to variances in color and manufacturing process, image shown may vary from final product. Refer to color samples when making color selection.





4

VINYL PATIO DOOR

Warning - This line is out of date, in an error state, or not saved correctly.
In order to continue, you must edit and save the line, correcting any configuration issues.

- Product Options -

- Endure 6512 Endure 2-Lite Patio Door
 - Standard Size: 72" x 80"
 - Unit Size: 70 7/8" x 79 1/2"
 - Left Hand Operable - Left Door Active (OSLI)
 - White Inside/Outside
 - Signature Aged Bronze Handle with Keylock
 - Assign a Random Key Number
 - Top Hung Screen with BetterVue Screen Mesh
 - Fully Assembled Unit
 - Graphite Foam Insulation
 - AccuVent Multi-Venting System (Bronze)
 - Perimeter Accessory A: 5956 Nail Fin (Factory Installed)
 - Perimeter Accessory C: 5892 Interior Trim
 - Glass for Entire Unit:
 - ComforTech DLA-UV
 - Double Strength Glass (1/8" per pane) (Tempered)
- TAG # REAR ELEV. (SUNROOM)

Outside Looking In

Due to variances in color and manufacturing process, image shown may vary from final product. Refer to color samples when making color selection.



Right Elevation - Garage Man Door



5

ENTRY DOOR

- Product Options -

- Ascent Single Entry Door in FusionFrame Smooth
- 30" x 80" Nominal Size
- Unit Size: 31 9/16" x 81 11/16"
- Frame Depth: 4 9/16"
- 2" Standard Brickmold
- Right Hand Inswing - Inside Looking Out
- 2 Panel 430 Style Ascent Smooth Fiberglass Door
- Clear Glass with ComforTech DLA-UV
- Smooth Plugless Trim (Ascent)
- Nightfall Inside and Outside

- Hardware

- Georgian Lockset - Prep Only (2 3/8" Backset)
- Thumbturn Deadbolt - Prep Only (2 3/8" Backset)
- Aged Bronze Strike Plates

- Frame

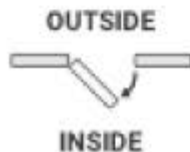
- Nightfall Inside Frame
- Nightfall Outside Frame
- Mill Finish ZAI Adjustable Threshold (5 5/8" Depth)
- Aged Bronze Ball Bearing Hinges
- Security Plate

TAG # GARAGE MAN DOOR *2/6 IS NA*

- Comments -

MINIMUM WIDTH FOR THE 1/2 GLASS DOOR OVER 1-PANEL IS 32" 2/8 DOOR. IS THERE ENOUGH ROOM FOR THIS ONSITE. IT WAS VERY TIGHT IF I REMEMBER. IF NOT I WOULD HAVE TO DO A 2/6 WITH 2-PANELS BELOW IF THAT IS OK? (TBD)

Outside Looking In
Due to variances in color and manufacturing process, image shown may vary from final product. Refer to color samples when making color selection.

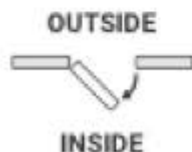


Front Entry Door



Outside Looking In

Due to variances in color and manufacturing process, image shown may vary from final product. Refer to color samples when making color selection.



9

COMBINATION UNIT

- Product Options -

- Signet Single Entry Door in FusionFrame Textured
- 36" x 80" Nominal Size
- 12" Sidelite Width
- Unit Size: 50 15/16" x 81 11/16"
- Frame Depth: 4 9/16"
- 2" Standard Brickmold
- Right Hand Inswing - Inside Looking Out

- Frame

- Urban Barnwood Inside Frame
- Urban Barnwood Outside Frame
- Oak Inside Mull Cover - Urban Barnwood
- Bronze ZAC Auto-Adjusting Threshold (5 5/8" Depth)
- Aged Bronze Ball Bearing Hinges
- Security Plate

TAG # FRONT ENTRY -URBAN BARNWOOD

10

ENTRY DOOR

1

- Product Options -

- Entry Door

- 1 Panel 440 Style Signet Oak Fiberglass Door
- Clear Glass with ComforTech DLA-UV
- Cottage (8-Lite) SDL Grid - 1V x 3H
- Urban Barnwood SDL Grids (Shadow Grids Between the Glass)
- Textured Contoured SDL Grids
- Urban Barnwood Inside and Outside

- Hardware

- Georgian Lockset - Prep Only (2 3/4" Backset)
- Thumbturn Deadbolt - Prep Only (2 3/4" Backset)
- Aged Bronze Strike Plates

11

SIDELITE

1

- Product Options -

- Knob Side Sidelite
- 140 Style Signet Oak Fiberglass Sidelite
- Clear Glass with ComforTech DLA-UV
- Cottage (4-Lite) SDL Grid - 0V x 3H
- Urban Barnwood SDL Grids (Shadow Grids Between the Glass)
- Textured Contoured SDL Grids
- Urban Barnwood Inside and Outside