

Detailed Explanation of Project\*

Tear off existing asphalt shingle roof sections only (not touching sunroom and rear epdm) and install a new asphalt shingle roof. Remove and replace gutters with same size (5") and color (white)





# Landmark<sup>®</sup> PRO

The Expert's Choice

 **certainteed**  
SAINT-GOBAIN



*Landmark PRO, shown in  
Max Def Driftwood*

  
SAINT-GOBAIN

# Introducing More Value



Landmark® PRO is designed specifically for the professional roofing contractor that takes pride in providing more to their customer.

## Landmark PRO improves upon the reliable CertainTeed Landmark shingle.

We started by adding more weathering asphalt to the industry's toughest fiberglass mat to provide more protection. Then we incorporated our Maximum Definition color blend technology to give the product more vibrancy on the roof. Included is the proven performance of our **NailTrak®** feature, enabling faster installation.

Landmark PRO offers the industry's strongest warranty. Protecting your reputation and safeguarding homeowners from manufacturing and aesthetic defects.

### LANDMARK PRO STANDARD WARRANTY

- Lifetime Limited Warranty
- 10-years of SureStart™ protection
- 15-year 110 MPH wind warranty (Upgrade to 130 MPH available. CertainTeed starter and CertainTeed hip and ridge required.)
- 30-year **StreakFighter®** algae resistance warranty

Add it all up and what you get is the opportunity to offer a lot of additional value for the money... and today that means more than ever.

## Landmark® PRO



### Landmark PRO specifications:

- Premium Max Def color palette
- **NailTrak®** for faster installation
- Lifetime limited warranty
- 30-year **StreakFighter®** algae resistance
- 10-year SureStart protection includes:
  - Materials, labor, tear off and disposal cost
- 15-year 110 MPH wind warranty with upgrade to 130 MPH available
- **UL 2218 Class 3 Impact Rated**



## Landmark®



### Landmark specifications:

- Traditional color palette
- **NailTrak®** for faster installation
- Lifetime limited warranty
- 25-year **StreakFighter®** algae resistance
- 10-year SureStart protection includes:
  - Materials and labor costs
- 15-year 110 MPH wind warranty with upgrade to 130 MPH available
- **UL 2218 Class 3 Impact Rated**





# LANDMARK® PRO COLOR PALETTE



Max Def Cobblestone Gray



Max Def Georgetown Gray



Max Def Colonial Slate



Max Def Weathered Wood



Max Def Driftwood



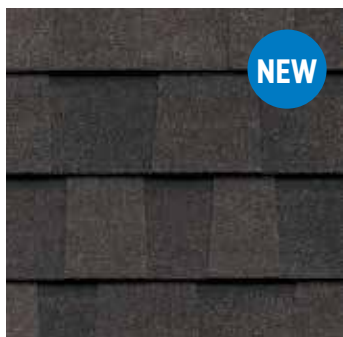
Max Def Prairie Wood



Max Def Pewter



Max Def Moiré Black



Max Def Espresso



Max Def Heather Blend



Max Def Shenandoah



Max Def Burnt Sienna



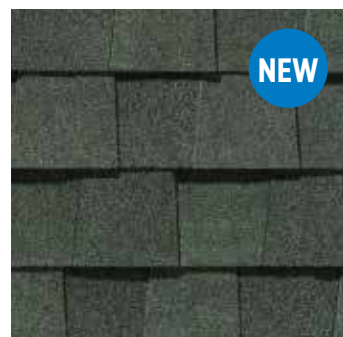
Max Def Resawn Shake



Max Def Coastal Blue



Max Def Red Oak



Max Def Evergreen

## Max Def Colors

Look deeper. With Max Def, a new dimension is added to shingles with a richer mixture of surface granules. You get a brighter, more vibrant, more dramatic appearance and depth of color. And the natural beauty of your roof shines through.

*NOTE: Due to limitations of printing reproduction, CertainTeed can not guarantee the identical match of the actual product color to the graphic representations throughout this publication.*



Scan code for  
more information

# StreakFighter®

## Algae Resistance

The ultimate in stain protection.

Those streaks you see on other roofs in your neighborhood? That's algae, and it's a common eyesore on roofing throughout North America. CertainTeed's **StreakFighter** technology uses the power of science to repel algae before it can take hold and spread.

**StreakFighter's** granular blend includes naturally algae-resistant copper, helping your roof maintain its curb appeal and look beautiful for years to come.

Granule with **StreakFighter** Technology

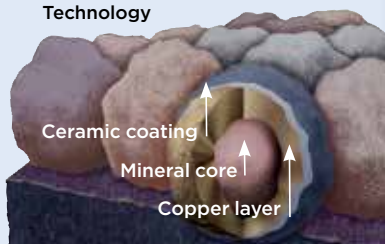


Diagram for illustrative purposes only.

# NailTrak®

## Fast, Accurate, Visible

The new and improved **NailTrak** nailing line, a feature on CertainTeed designer shingles.

Now **NailTrak** is brighter than ever before, with high-visibility lines that stand out whether it's daybreak or dusk.

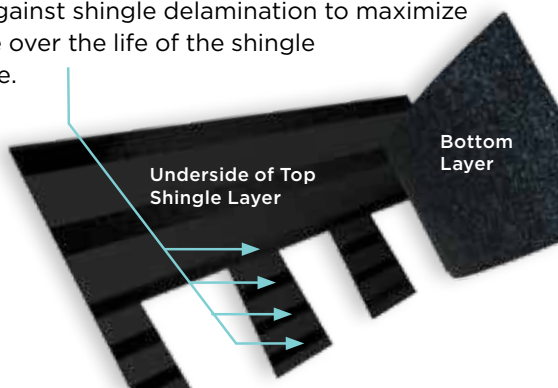
**NailTrak** removes the guesswork with three separately defined lines, creating a large area to guide your nailing and a smaller area for extreme steep-slope applications.



# QuadraBond®

## Advanced Layering

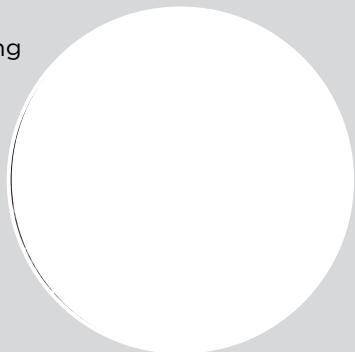
CertainTeed's specially formulated adhesive adheres shingle layers at four points, more than any other manufacturer. This superior bond provides greater protection against shingle delamination to maximize performance over the life of the shingle in any climate.



# CertaSeal®

## Uplift Protection

**CertaSeal®** is a fast-activating modified asphalt sealant with a 20-year record of proven performance. Designed to seal shingles together upon installation, it protects roofs from wind uplift and shingle blow-off so that homes stay safe and dry. It's also engineered to remain flexible after installation, unlike harder sealants that can dry out and crack over time.



## Integrity Roof System™

Insist upon the Integrity Roof System™ and get the ultimate in roof performance.

learn more at:

[certainteed.com/roofing](http://certainteed.com/roofing)



Read our blog

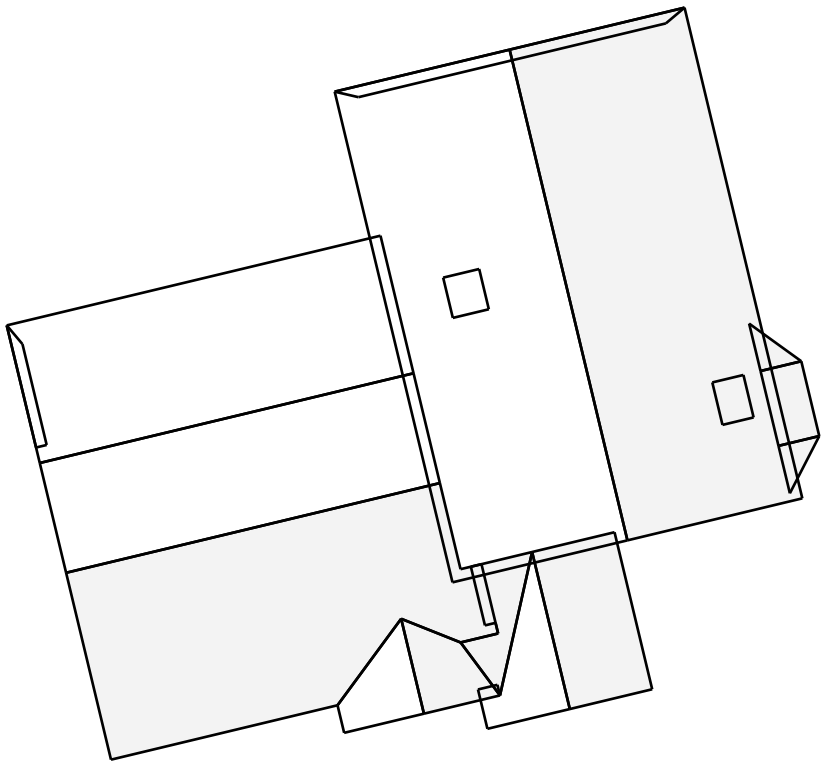
Landmark® PRO available in areas shown



### CertainTeed

Ceilings • Gypsum • Insulation • Roofing • Siding • Trim  
20 Moores Road, Malvern, PA 19355 | 800-233-8990 | [certainteed.com](http://certainteed.com)

©04/25 CertainTeed, Printed in the USA, Code No. 00-00-191-NA-EN



**Contents**

|            |   |
|------------|---|
| Overview   | 1 |
| Top View   | 2 |
| Side Views | 3 |
| Lengths    | 4 |
| Pitches    | 5 |
| Areas      | 6 |
| Summary    | 7 |
| Materials  | 8 |

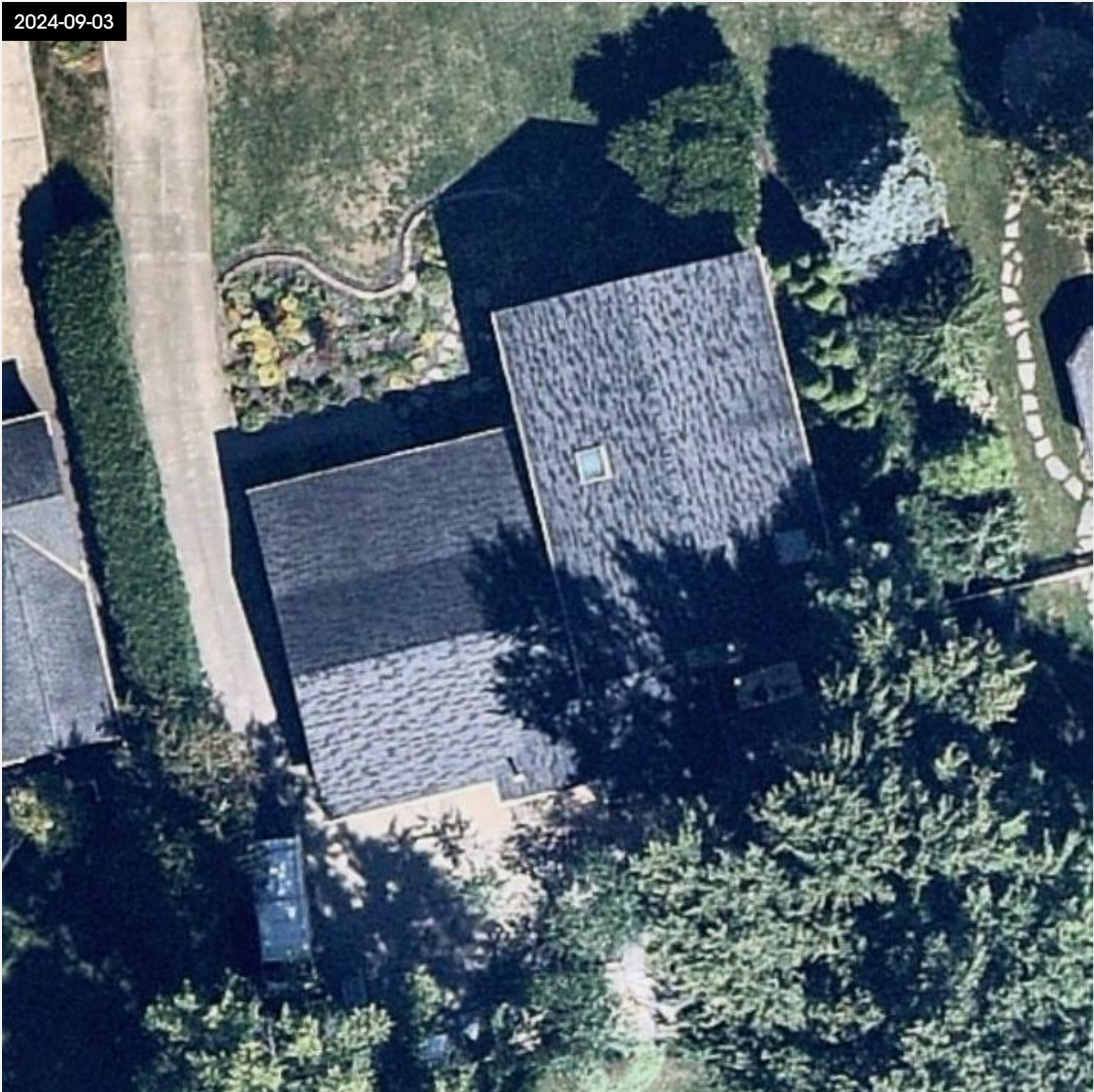
**Measurements**

|                   |             |
|-------------------|-------------|
| Roof Area         | 3,653 sq ft |
| Roof Facets       | 15          |
| Predominant Pitch | 7 / 12      |
| Ridges/Hips       | 113 ft      |
| Valleys           | 36 ft       |
| Rakes             | 161 ft      |
| Eaves             | 233 ft      |
| Bends             | 39 ft       |

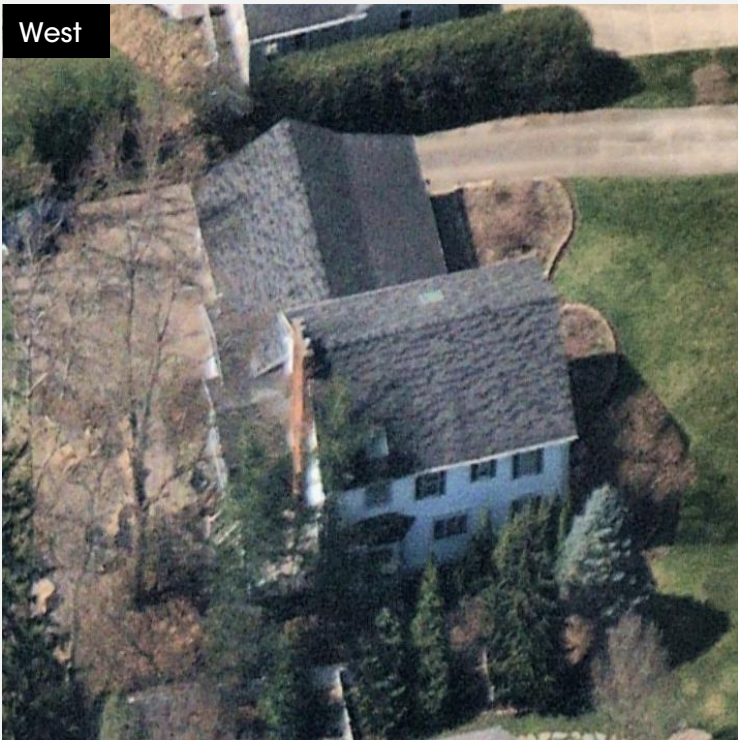
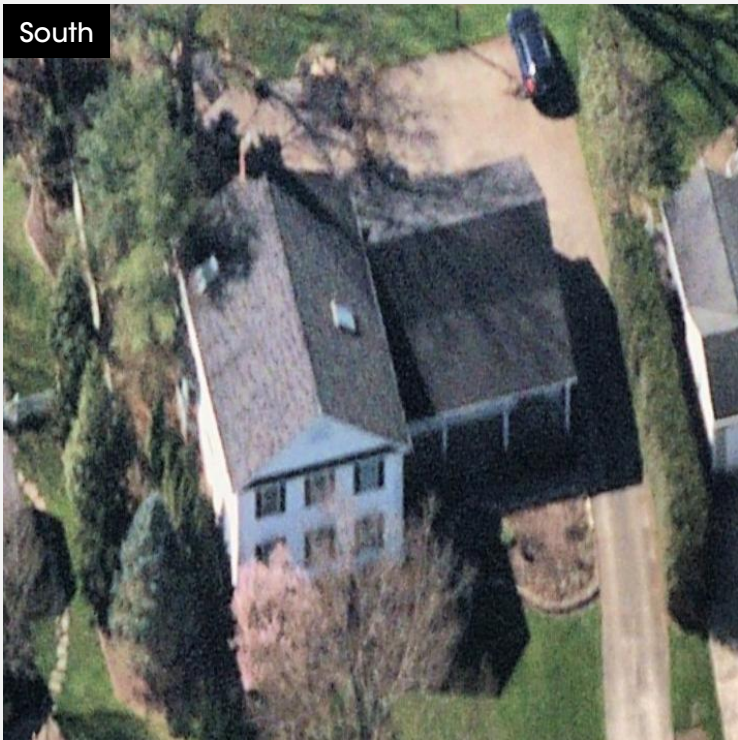
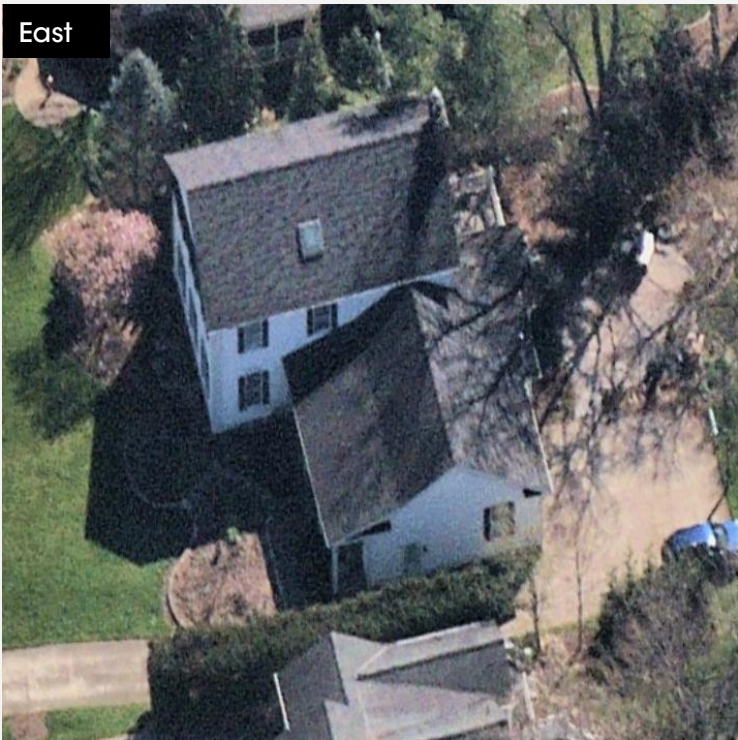




2024-09-03



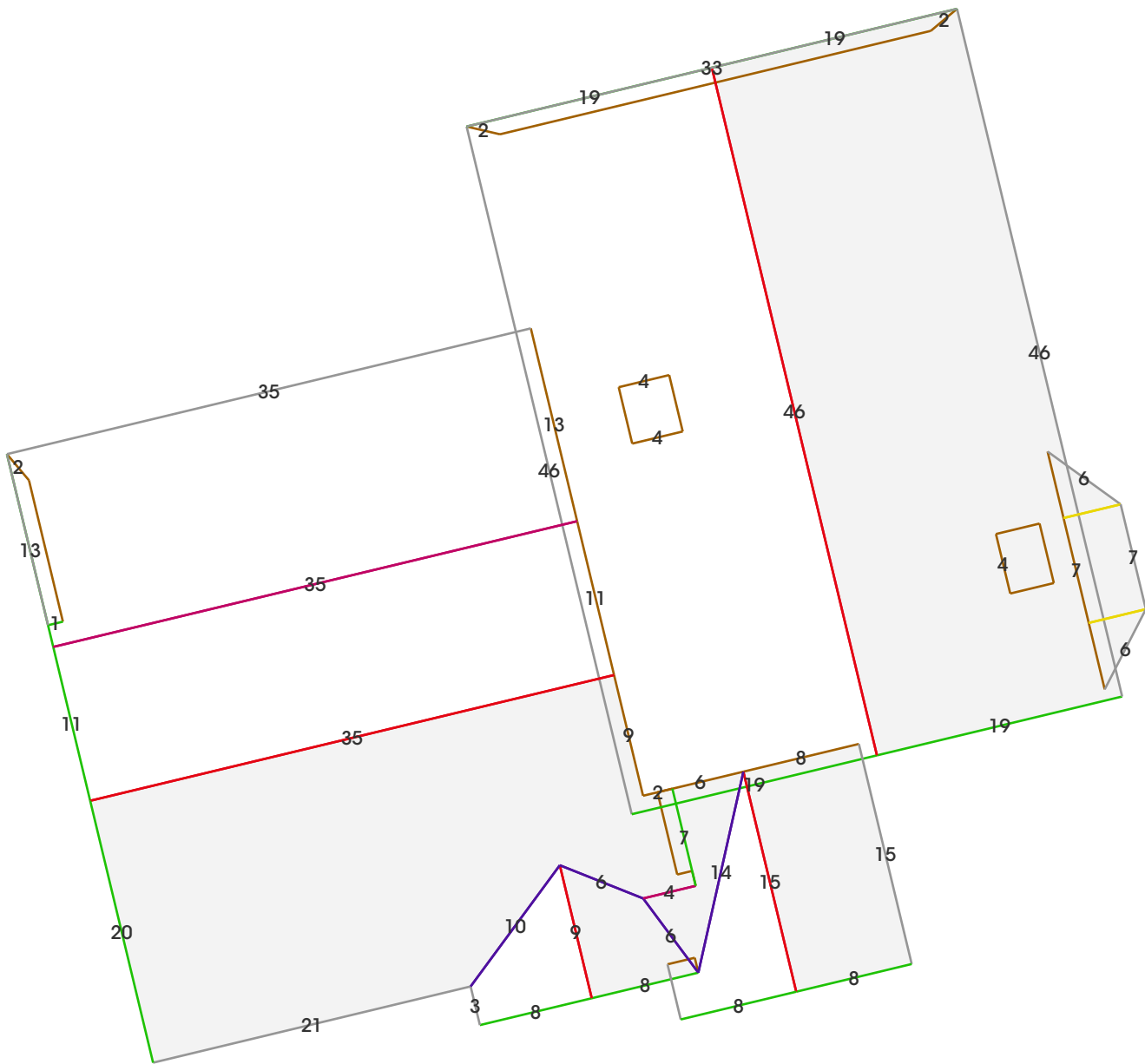








|       |      |      |
|-------|------|------|
| Flash | Step | Drip |
| 71    | 81   | 394  |

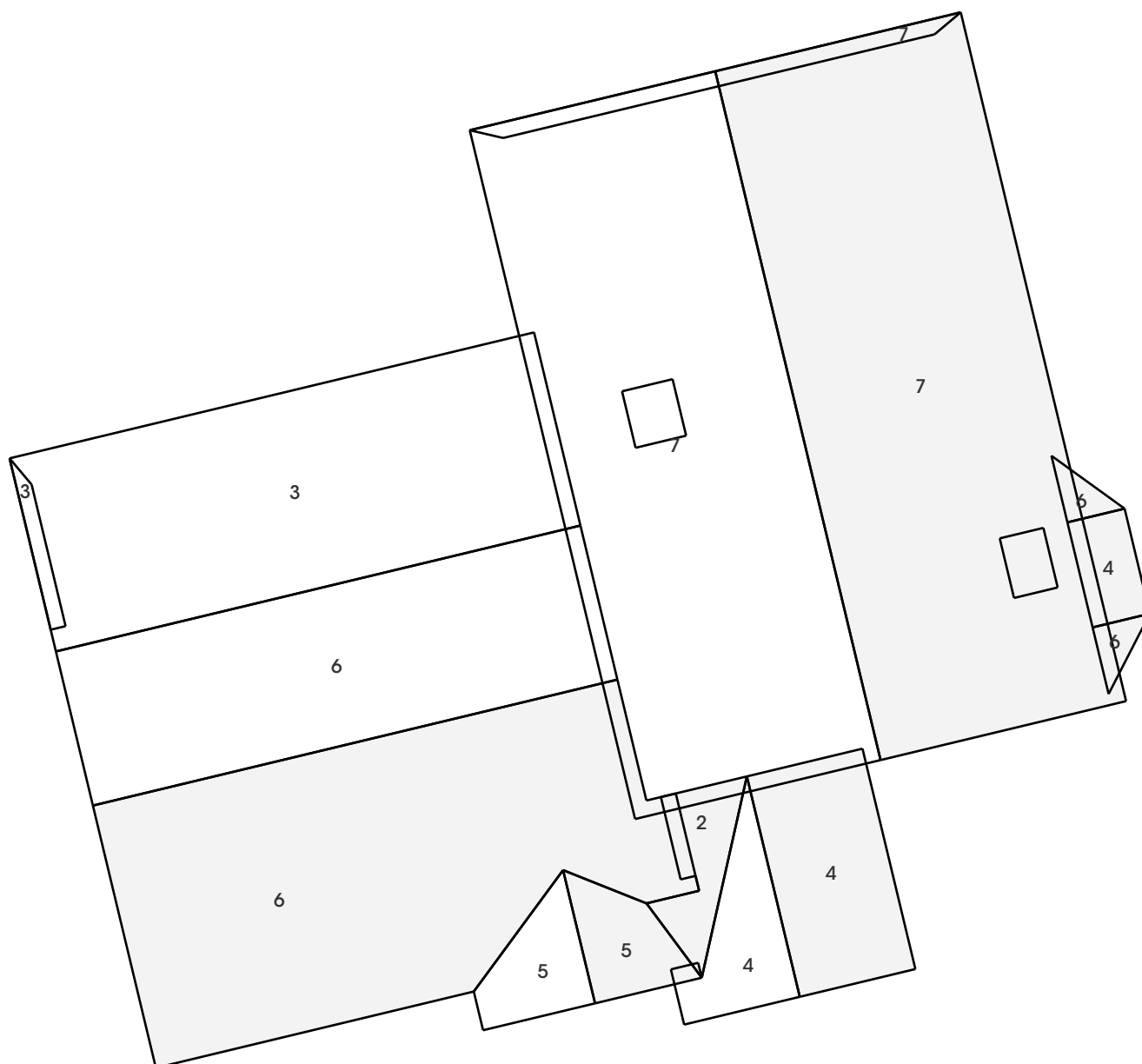


|      |      |     |      |       |        |
|------|------|-----|------|-------|--------|
| Bend | Eave | Hip | Rake | Ridge | Valley |
| 39   | 233  | 8   | 161  | 105   | 36     |

Lengths in feet

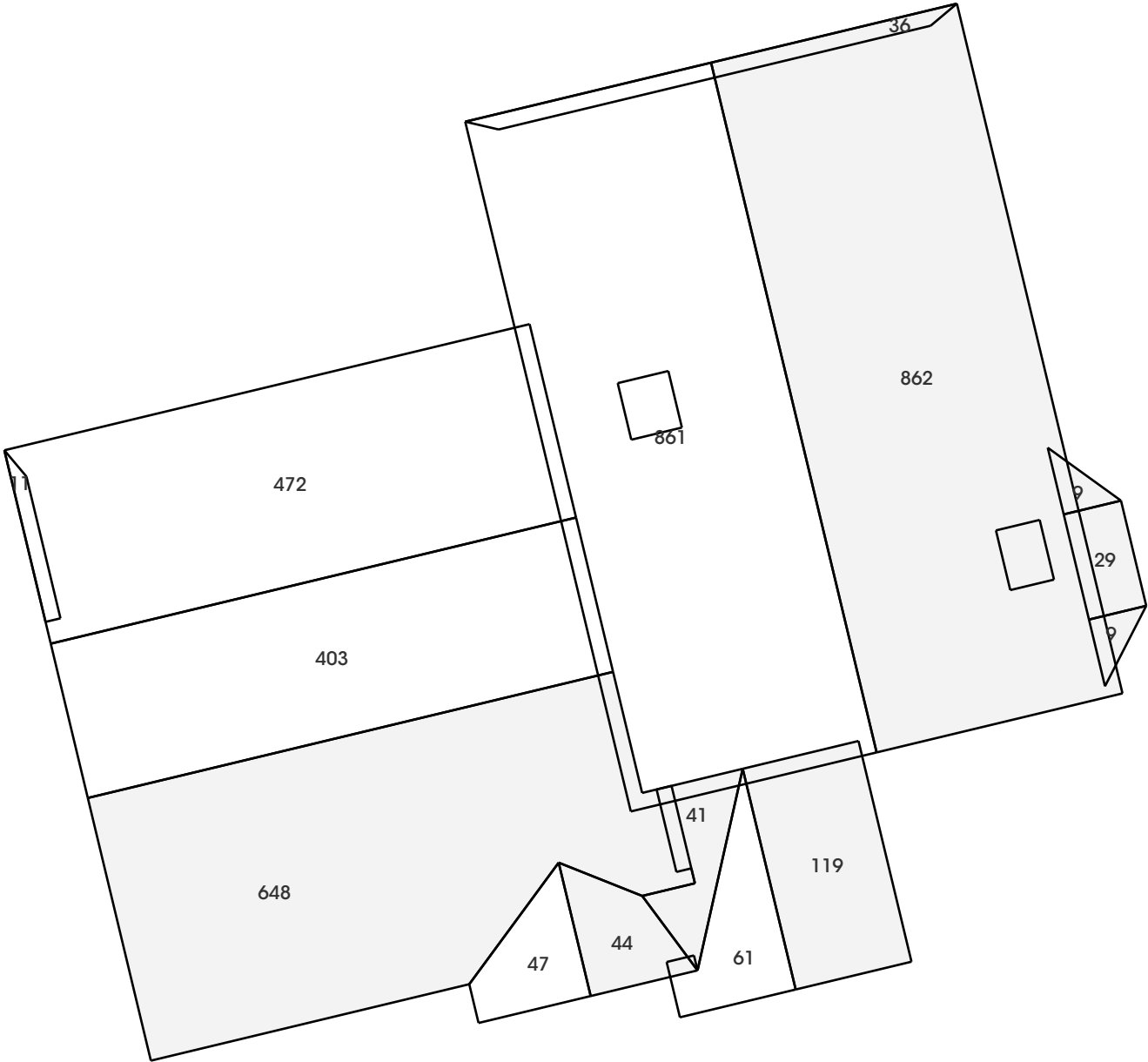


# Pitches



Pitches in inches per foot





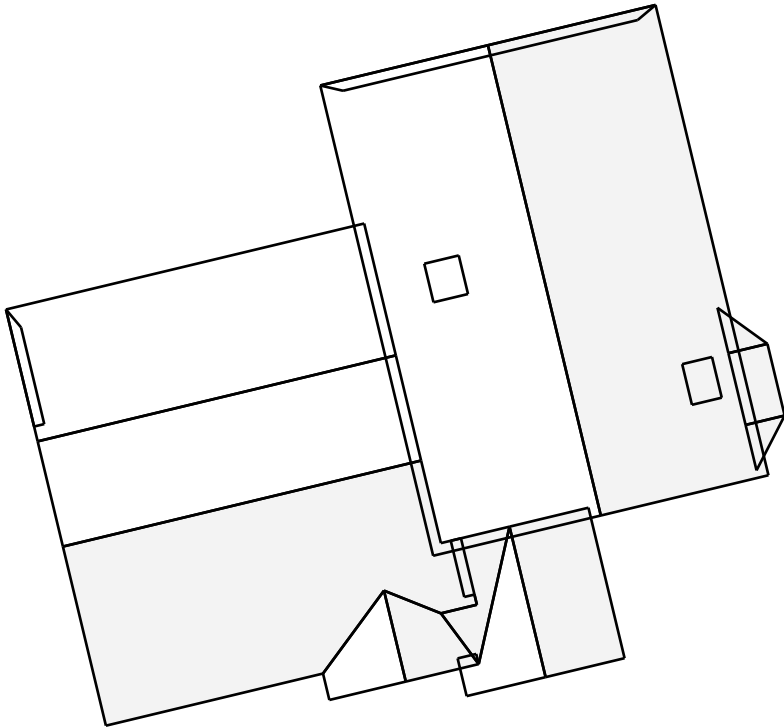
Areas in square feet



| Pitch   | 2  | 3   | 4   | 5  | 6     | 7     |
|---------|----|-----|-----|----|-------|-------|
| Area    | 41 | 483 | 209 | 91 | 1,070 | 1,759 |
| Percent | 1% | 13% | 6%  | 2% | 29%   | 48%   |

Suggested

| Waste   | 0%    | 8%    | 11%   | 13%   | 15%   | 18%   | 23%   |
|---------|-------|-------|-------|-------|-------|-------|-------|
| Area    | 3,653 | 3,945 | 4,055 | 4,128 | 4,201 | 4,311 | 4,493 |
| Squares | 37    | 40    | 41    | 42    | 43    | 44    | 45    |



|             |             |
|-------------|-------------|
| Roof Area   | 3,653 sq ft |
| Roof Facets | 15          |
| Pitch       | 7 / 12      |

|         |        |
|---------|--------|
| Bends   | 39 ft  |
| Eaves   | 233 ft |
| Hips    | 8 ft   |
| Rakes   | 161 ft |
| Ridges  | 105 ft |
| Valleys | 36 ft  |

|           |        |
|-----------|--------|
| Flash     | 71 ft  |
| Step      | 81 ft  |
| Drip Edge | 394 ft |

|              |        |
|--------------|--------|
| Leak Barrier | 629 ft |
| Ridge Cap    | 113 ft |
| Starter      | 394 ft |

|                |          |
|----------------|----------|
| Penetrations   | 2        |
| Pen. Area      | 28 sq ft |
| Pen. Perimeter | 30 ft    |

Notes: 1) Measurements are rounded to the nearest whole number. 2) Rakes are defined as sloped roof edges. 3) Eaves are defined as level roof edges. 4) Flashing pertains to level roof edges and excludes valleys. 5) Step flashing pertains to sloped roof edges and excludes areas around penetrations. 6) Drip edge = eaves + rakes. 7) Waste table excludes additional materials needed for ridges, hips, valleys, etc. 8) Suggested waste factor is based on the roof complexity and is provided for guidance purposes only. You should confirm the appropriate waste factor prior to ordering.





|   | Waste  | 0%  | 8%  | Suggested<br>13% | 18% |
|---|--------|-----|-----|------------------|-----|
| <b>Shingle Products</b>                 |        |     |     |                  |     |
| Timberline: HDZ, UHDZ, NS, ASII, HDZ RS | bundle | 112 | 121 | 126              | 132 |
| Royal Sovereign                         |        |     |     |                  |     |
| <b>Low-Slope Roofing System</b>         |        |     |     |                  |     |
| Liberty Base/Ply Sheet                  | roll   | 0   | 0   | 0                | 0   |
| Liberty Cap Sheet                       | roll   | 0   | 0   | 0                | 0   |
| Liberty Asphalt Primer                  | gallon | 0   | 0   | 0                | 0   |
| Liberty Flashing Cement                 | gallon | 0   | 0   | 0                | 0   |
| <b>Starter</b>                          |        |     |     |                  |     |
| WeatherBlocker                          | bundle | 4   | 5   | 5                | 5   |
| Pro-Start                               | bundle | 4   | 4   | 4                | 4   |
| Quick-Start                             | roll   | 12  | 13  | 14               | 15  |
| <b>Roof Deck Protection</b>             |        |     |     |                  |     |
| Deck-Armor, Tiger Paw, FeltBuster 10 sq | roll   | 4   | 4   | 5                | 5   |
| Shingle-Mate                            | roll   | 10  | 10  | 11               | 11  |
| VersaShield                             | roll   | 11  | 12  | 12               | 13  |
| <b>Leak Barrier</b>                     |        |     |     |                  |     |
| StormGuard, WeatherWatch 2 sq           | roll   | 10  | 11  | 11               | 12  |
| WeatherWatch 1.5 sq                     | roll   | 13  | 14  | 15               | 15  |
| <b>Ridge Cap</b>                        |        |     |     |                  |     |
| Seal-A-Ridge, Seal-A-Ridge AS           | bundle | 5   | 5   | 6                | 6   |
| TimberTex                               | bundle | 6   | 7   | 7                | 7   |
| Z-Ridge                                 | bundle | 4   | 4   | 4                | 5   |
| TimberCrest                             | box    | 6   | 7   | 7                | 7   |
| <b>Nails</b>                            |        |     |     |                  |     |
| Cap Nails                               | box    | 2   | 2   | 3                | 3   |
| Coil Nails 1.25 in                      | box    | 2   | 2   | 3                | 3   |
| <b>Step Flashing</b>                    |        |     |     |                  |     |
| Step Flashing 10 ft                     | piece  | 9   | 9   | 10               | 10  |
| Step Flashing 8 ft                      | piece  | 11  | 11  | 12               | 12  |
| <b>Drip Edge</b>                        |        |     |     |                  |     |
| Drip Edge 10 ft                         | piece  | 40  | 43  | 45               | 47  |
| Drip Edge 8 ft                          | piece  | 50  | 54  | 56               | 59  |

Notes: 1) These approximate quantities are based on estimated measurements and are for guidance purposes only. You should always confirm quantities prior to ordering and ensure you are following local building code requirements. 2) For Timberline, 3 bundles = 0.984 squares. 3) Starter = eaves + rakes. 4) Leak barrier = bends + eaves + flashing + hips + rakes + step + valleys. 5) Ridge cap = hips + ridges. 6) Low-slope products applied to 1/12 pitch areas. 7) Timberline products applied to 2/12 pitch areas and above. 8) Installed coverage will be less and depend on quantity and width of side and end laps. 9) Liberty low slope roofing system should be installed as a system. For more information, see [gaf.com/liberty](http://gaf.com/liberty).



### Static

|  | Quantity | Units |
|--|----------|-------|
| Cobra® Rigid Vent 3™, SnowCountry® & SnowCountry® Advanced | 49       | ft    |
| Cobra® Exhaust Vent Roll - Nail Gunnable                   | 63       | ft    |
| Cobra® Exhaust Vent Roll - Hand Nailable                   | 52       | ft    |
| Cobra® RidgeRunner®  | 71       | ft    |
| Cobra® Hip Vent  | 98       | ft    |
| Master Flow® SSB960 Metal Super Slant-Back Roof Vents      | 15       | vent  |
| Master Flow® RV50/R50 Square-Top Roof Vents                | 18       | vent  |
| Master Flow® IR65 Plastic Slant-Back Roof Vents            | 14       | vent  |
| Master Flow® High-Capacity Dome Vents                      | 7        | vent  |
| Master Flow® 10' Aluminum Ridge Vent                       | 41       | ft    |
| Cobra IntakePro® Rooftop Intake Vent                       | 98       | ft    |
| Master Flow® Undereave Intake Vents - 16" x 8"             | 18       | vent  |

### Powered - Roof Mount

|  | Exhaust<br>(vent) | Cobra<br>IntakePro (ft) | Master Flow 16x8<br>Intake (vent) |
|--|-------------------|-------------------------|-----------------------------------|
| Master Flow® ERV4 Power Attic Vents                            | 3                 | 160                     | 29                                |
| Master Flow® ERV5 Power & Wi-Fi Attic Vents                    | 2                 | 134                     | 24                                |
| Master Flow® ERV6 Power Attic Vents                            | 2                 | 160                     | 29                                |
| Master Flow EZ Cool™ Plug-in Power Attic Vents                 | 2                 | 112                     | 21                                |
| Master Flow® GreenMachine™ Solar/Dual-Powered Vents            | 5                 | 140                     | 26                                |
| Master Flow® GreenMachine™ High-Power Solar/Dual-Powered Vents | 4                 | 160                     | 29                                |
| Master Flow® 12" Wind Turbines                                 | 6                 | 158                     | 29                                |
| Master Flow® 14" Wind Turbines                                 | 4                 | 150                     | 27                                |

Note: The estimated quantity of attic ventilation products in this report is based solely on the total exterior square footage of all roof planes and is meant for estimating purposes only. It is the responsibility of the installer to verify the correct quantity and type of attic ventilation products prior to commencement of work. Installer must always review job-specific attic ventilation needs such as local code requirements, attic floor square footage, roof design, and conditioned spaces under the roof. GAF recommends a minimum of 1 square foot of attic ventilation (evenly split between intake and exhaust) for every 300 square feet of attic floor space. The amount of exhaust ventilation at or near the ridge must never exceed the amount of intake ventilation at or near the soffit. See [gaf.com/ventcalculator](http://gaf.com/ventcalculator) for details.

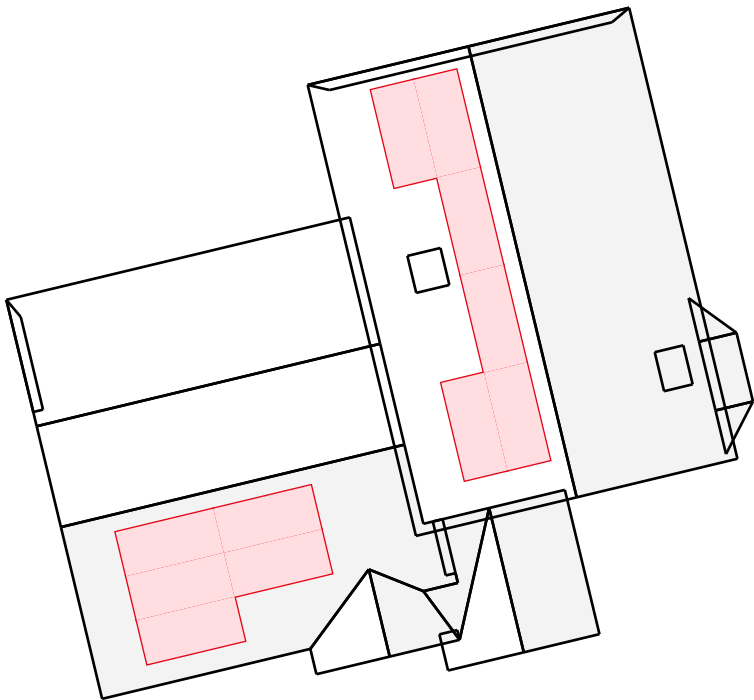




# WELCOME TO GAF ENERGY

Our roof-integrated solar is a home asset your customers can count on.

Note: The data provided is only a preliminary estimate and does not represent a binding agreement, guarantee, or obligation of GAF Energy regarding the production, performance, utility rate increases, workmanship or any other data relating to Timberline Solar.

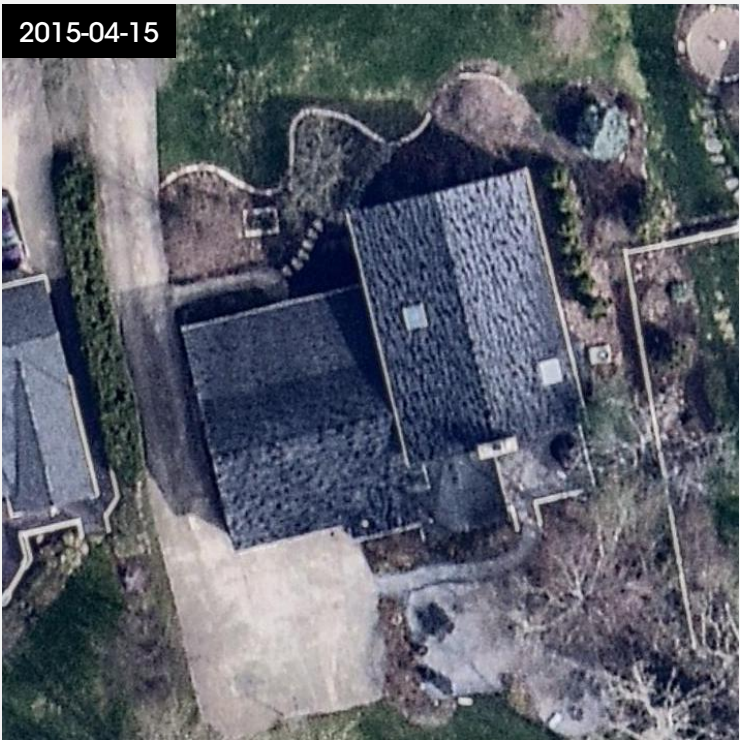
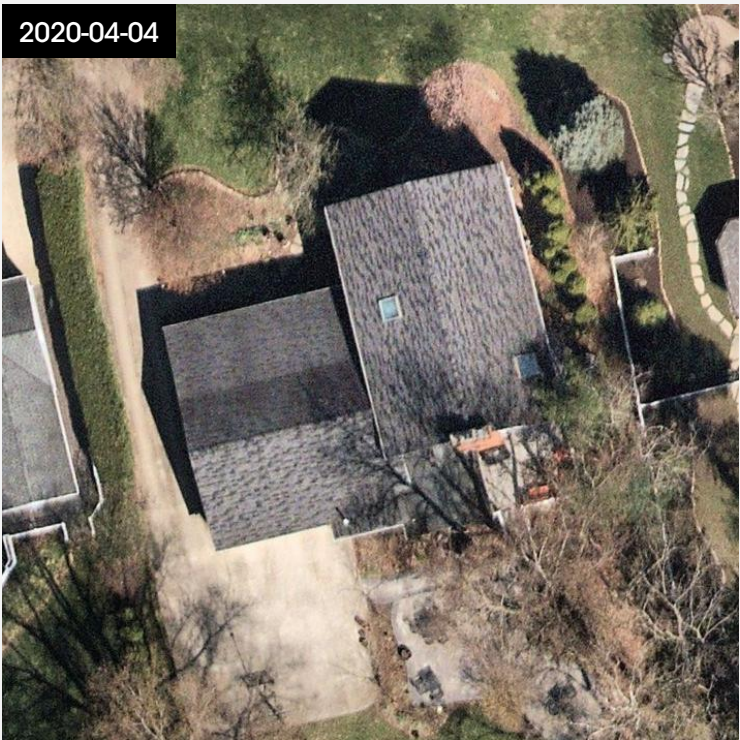
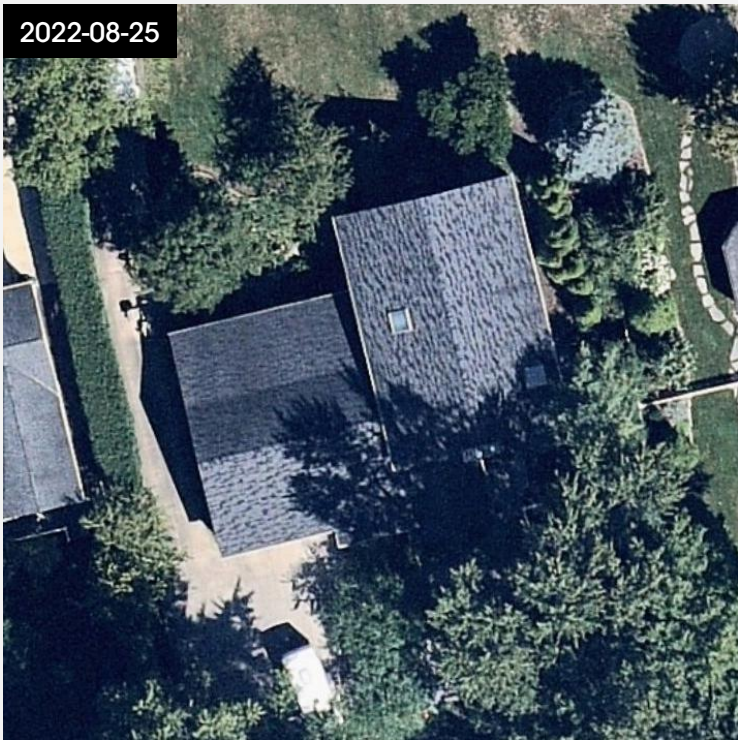


System: 8 kw | Production: 6,938 kwh/year | Value: \$887/year

## IT SAVES MONEY AND PROVIDES LONG-TERM PEACE OF MIND.

Unlike a traditional solar system installation where holes are drilled in the roof, our low-profile solar system is part of the roof, and it protects your customer's home while producing clean energy.





[View Online](#)








Blueprints brought to life

Upload.  
Measure.  
Build.



## Turn 2D building plans into a 3D rendering with detailed roof measurements within two hours for single-family homes\*

GAF Takeoff™ eliminates guesswork by bringing your blueprint to life with the data you need about a roof. Detailed measurements, a materials list, and a 3D rendering make complicated work simple. Upload a PDF file and receive your single-family home report within two hours.\*



Detailed roof measurements



Bill of materials



Interactive 3D roof rendering



Fast turnaround time within 2 hours\*

\*Terms and restrictions apply. Visit [gaf.com/takeoff](http://gaf.com/takeoff) for details.

**GAF BusinessServices**

Find out more at [gaf.com/Takeoff](http://gaf.com/Takeoff)

We protect what matters most™





Take the pain out of insurance work

Simplify  
insurance  
work



## Take the hassle out of insurance restoration work

The GAF ScopeConnect™ service is a simple turn-key solution offering a complete insurance scope of work for a single family home in an industry standard format in less than 24<sup>1</sup> hours for only \$99.<sup>2</sup>



**Complete insurance SOW**

Just answer a few questions



**Fast turnaround**

Estimate ready in less than 24 hours



**Industry standard format**

Comes in .ESX or .XML file format



**Written by**

Xactimate-certified and Symblivity-trained experts

<sup>1</sup>Shared delivery time applies only to estimates ordered during our business hours. Visit [gaf.com/scopeconnect](http://gaf.com/scopeconnect) for terms and restrictions.

<sup>2</sup>Price varies based on contractor certification level.

**GAF BusinessServices**

Find out more at [gaf.com/ScopeConnect](http://gaf.com/ScopeConnect)

We protect what matters most™

