



Corporate Headquarters
295 South Water Street, Suite 300
Kent, OH 44240
800-828-8312

Local Office
333 Martinel Drive
Kent, OH 44240
330-673-5685

October 23, 2025`

Bradley Kosco, PE, PS, City Engineer
City of Hudson
1140 Terex Road
Hudson, Ohio 44236

RE: Robinson Field Park, Ravenna Street, Hudson, Summit County, Ohio

Dear Mr. Kosco:

Davey Resource Group, Inc. "DRG" was retained by the City of Hudson to perform a water resources delineation on the Robinson Field Park property. The 29.2-acre delineation survey area is bordered on the north by Ravenna Street, on the west by Stow Road, and on the south by the railroad in Hudson, Ohio.

A water resources delineation was performed by Todd Crandall of DRG on September 22, 2022. Two wetlands totaling 14.160 acres were found within the study area (Table 1). There is an intermittent stream with a length of 333 linear feet on the site (Table 2). A map showing the location and quantity of the water resources identified on the property is included in Attachment 1.

Table 1. Wetlands Delineated on the Site

Wetlands	Cover Type	Connectivity to Waters of the U.S.	Area (Acres)	Latitude/ Longitude
A	emergent, forested, scrub/shrub	non-isolated	14.061	41.2222, - 81.4087
B	forested	non-isolated	0.099	41.2205 - 81.4081
Total	-	-	14.160	

Table 2. Drainageways Delineated on the Site

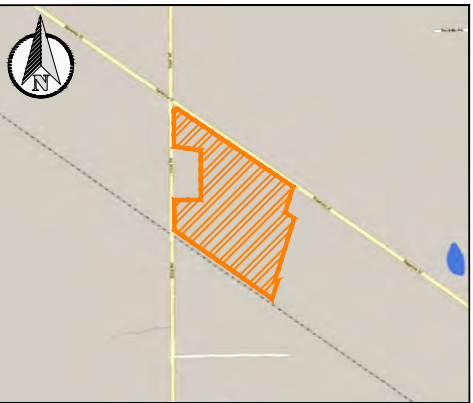
Stream	Flow Regime	Length (Linear Feet)	Average Bankfull Width (Feet)	Dominant Substrate Types
1	intermittent	333	5	hardpan, silt
Total	-	333	-	-

If you have any questions regarding this delineation, please contact me at 330-289-2691, or via email at judith.mitchell@davey.com.

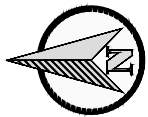
Sincerely,

Judith Mitchell, Project Manager
Ecological Services

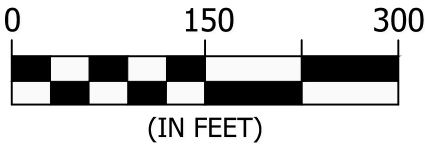
Attachment 1 **Water Resources Map**



NOTE: Wetlands sizes and stream lengths could change upon overlay of a boundary survey, especially where these features extend outside of or are in close proximity to the shown study limits. Wetlands acreage and stream lengths are calculated for the portion that occurs in the shown study limits.



GRAPHIC SCALE



- Approximate study area
- Intermittent stream (333 linear feet)
- Non-jurisdictional ditch (380 linear feet)
- Direction of flow
- Existing culvert(s)

- Area(s) of wetlands delineated within study area (14.160 acres)
- ① = Sample point location

PREPARED BY:
DAVEY
Resource Group

PREPARED FOR:
City of Hudson

29.2 Acres, Robinson Field Park
Ravenna Street and Stow Road
Hudson, Summit County, Ohio

Data collected
22 September 2022

Map
Sheet **1**
of 1

The information presented is not a survey or engineering product, and should not be used for any purpose provided by applicable law or regulation that requires a surveying or engineering license.