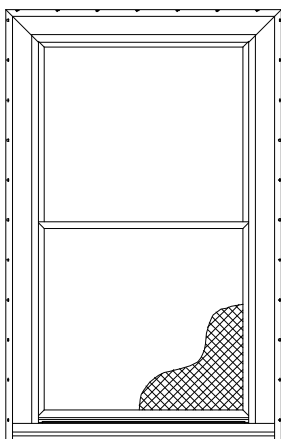


Series 3800



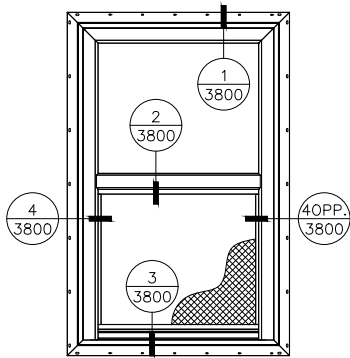
INTERIOR VIEW

Features

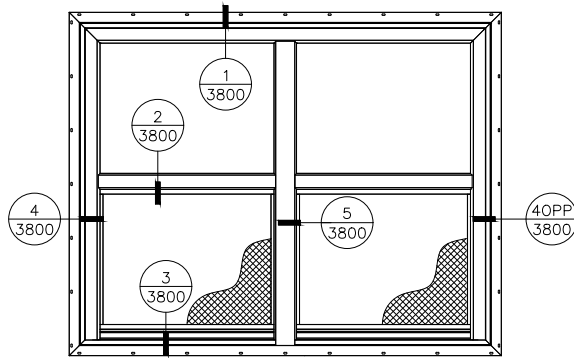
- Flat Frame Depth- $3 \frac{1}{4}$ "
- Glazing Pocket Depth - $3/4$ "
- New Construction Application
- Integral J-Channel
- Inverted Block & Tackle Balance System
- Continuous Head & Sill on Twin & Triple units

Options

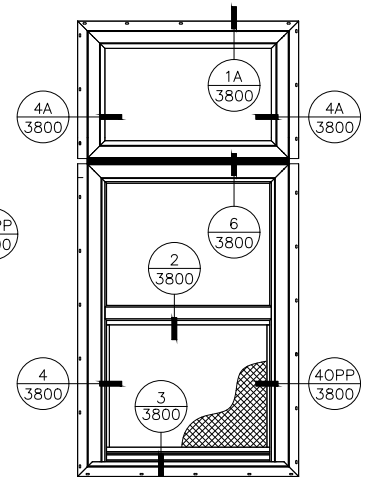
- Low-E and Argon filled glass units available
- Passthru/Drywall Window
- Extension Jambs $4 \frac{9}{16}$ - $6 \frac{9}{16}$
- Vent Latch
- Sash limiter w/ custodial tilt latch
- Window opening control device
- AAMA 450 certified Aluminum Structural mullion
- STC, OITC sound rated



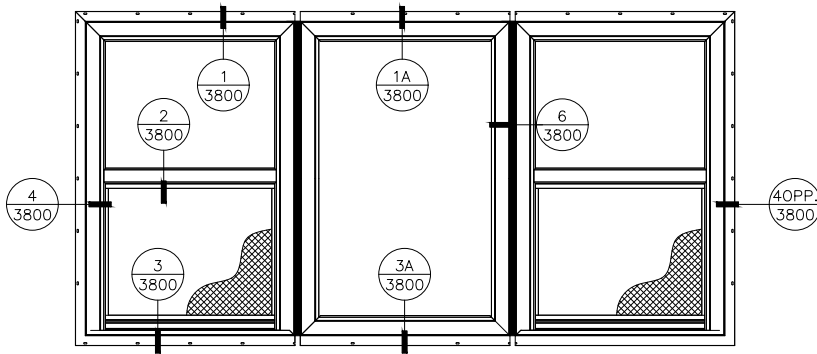
**Series
3800SH**



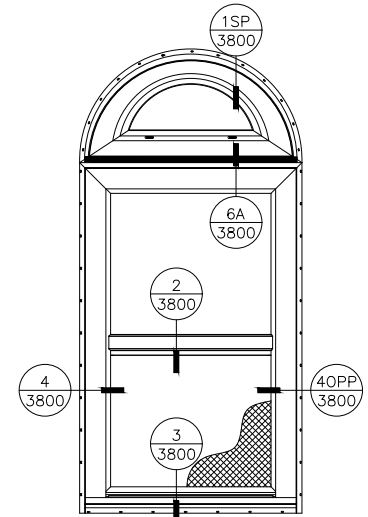
**Series
3800-2 SH**



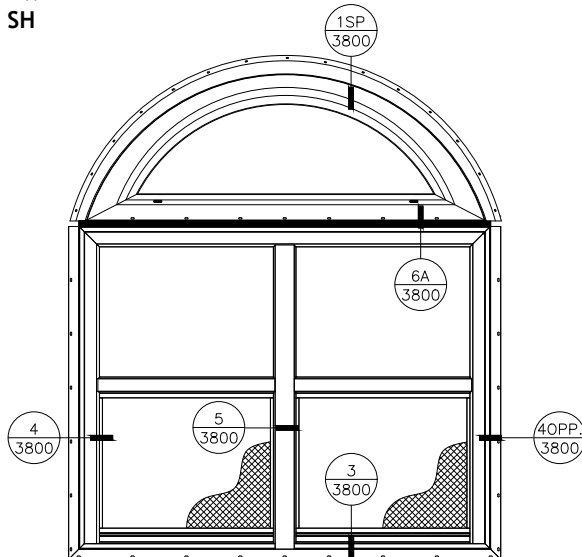
**Series
3800 PW
3800 SH**



**Series
3800 SH
3800 PW
3800 SH**

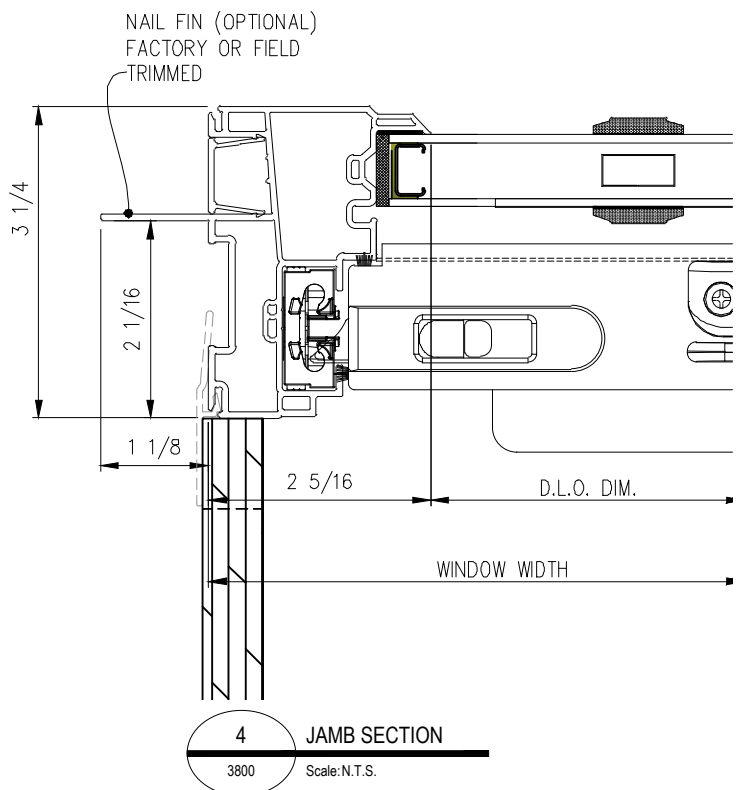
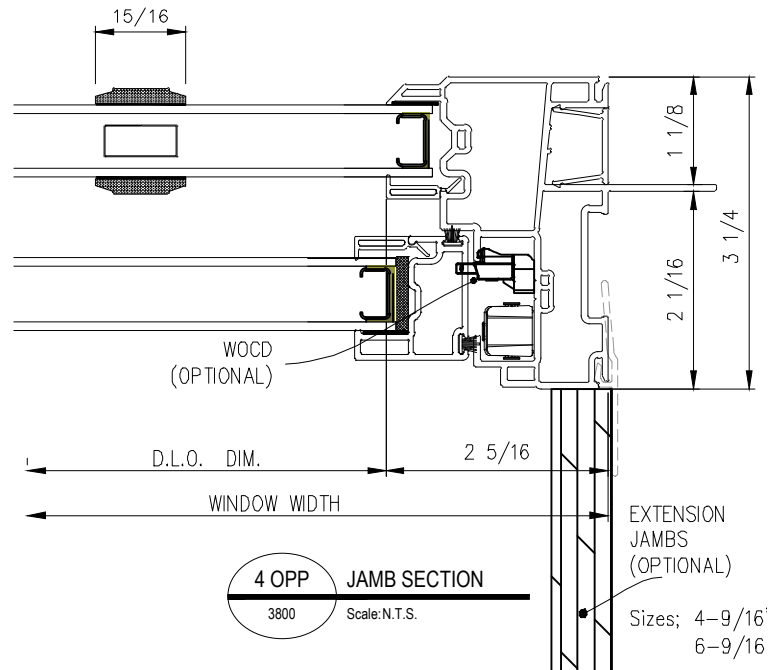
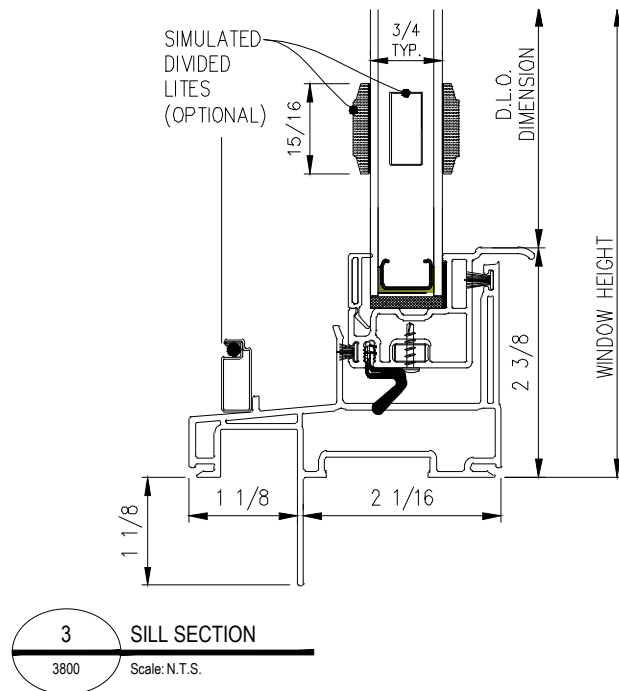
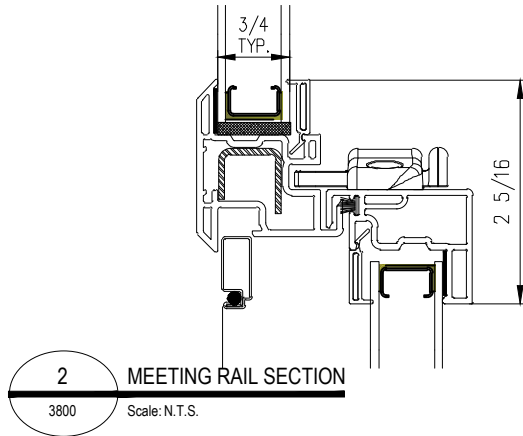
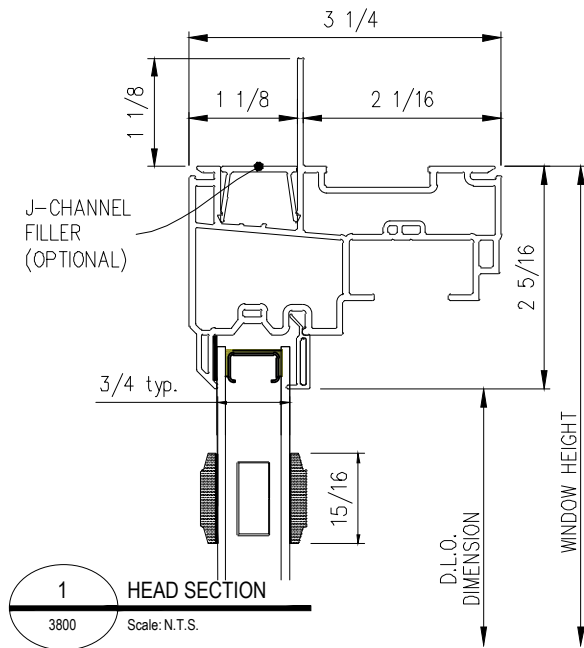


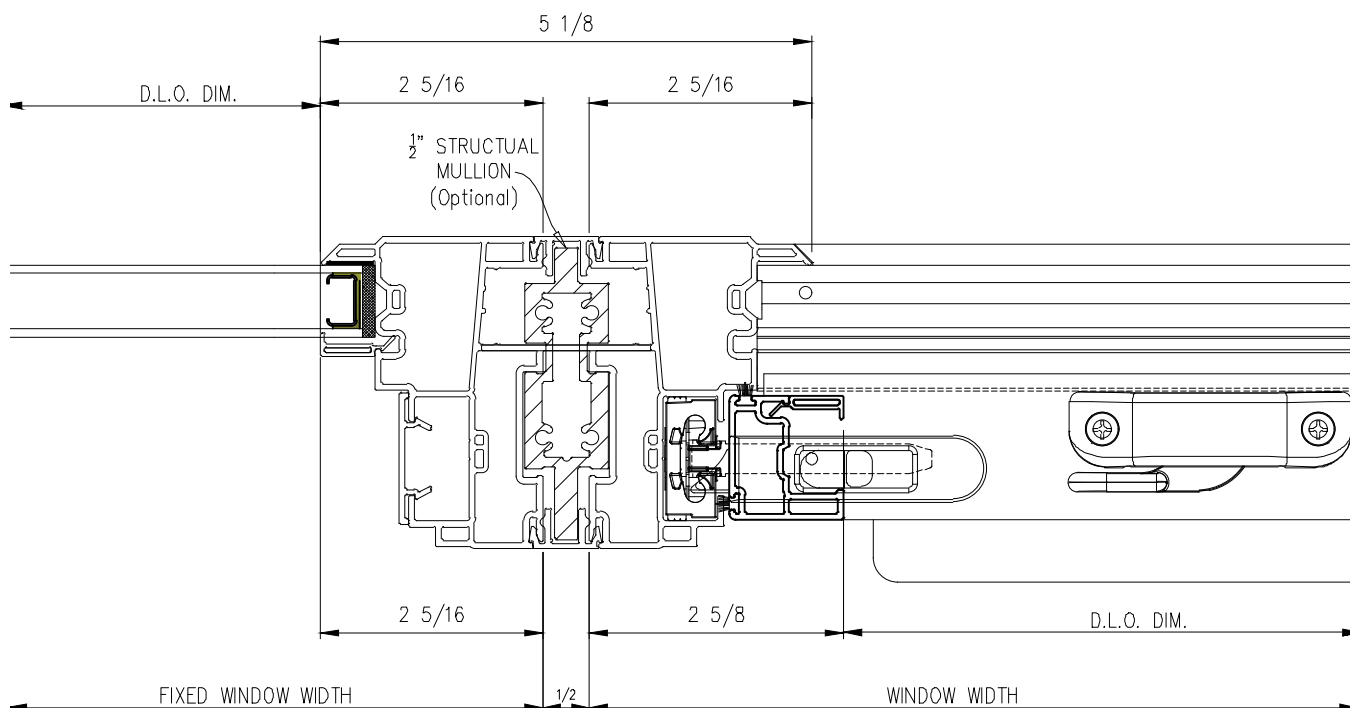
**Series
3800 CT
3800 SH**



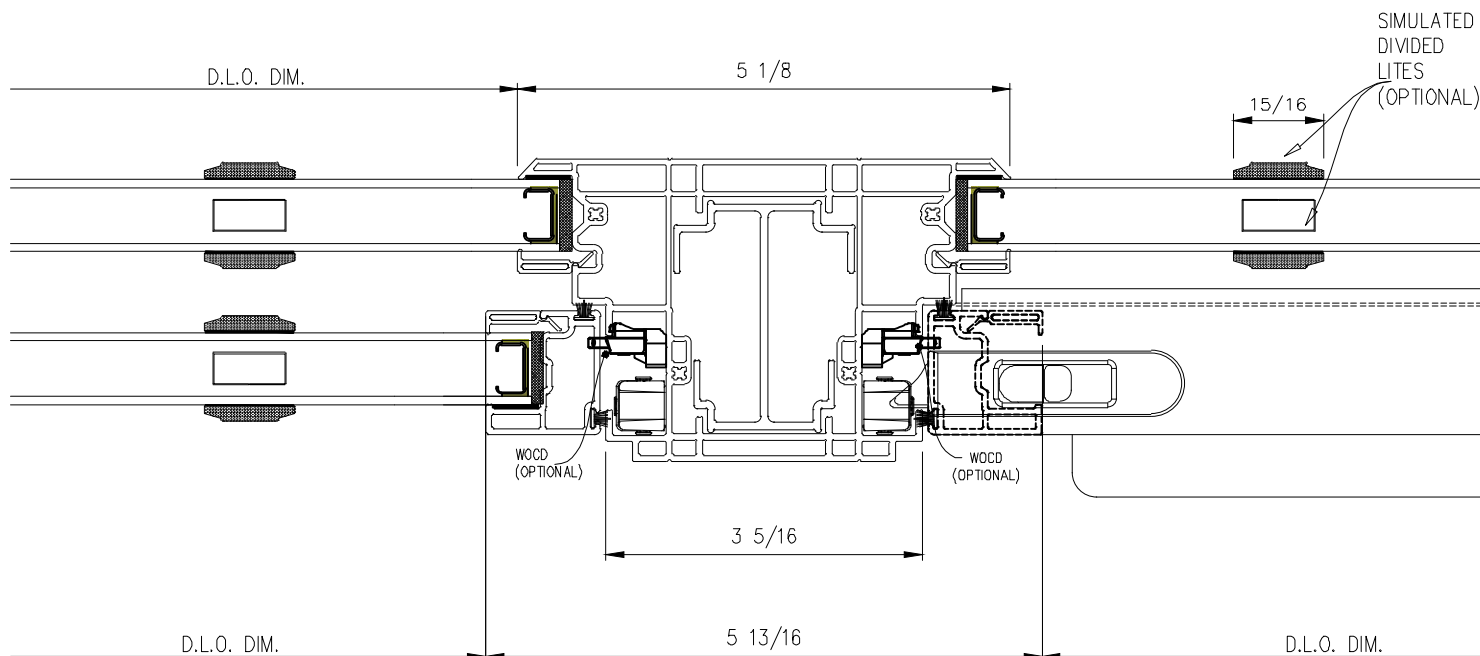
**Series
3800 CT
3800-2 SH**

**New Construction / Replacement
Welded Vinyl Single Hung 3800 Series**

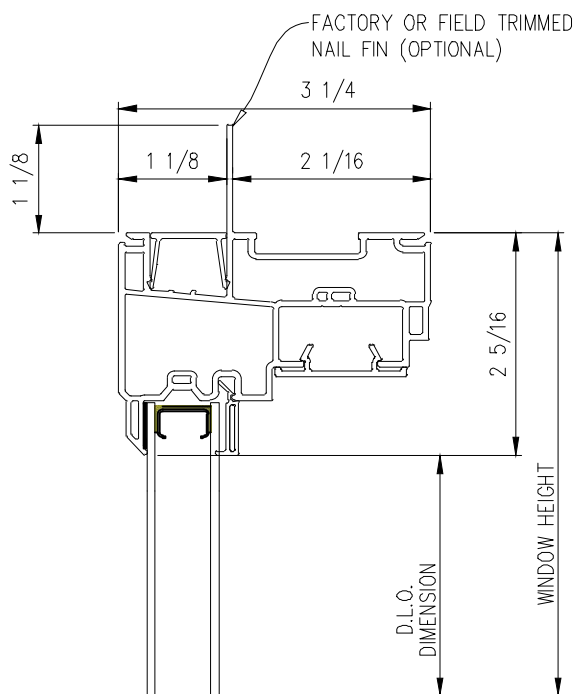




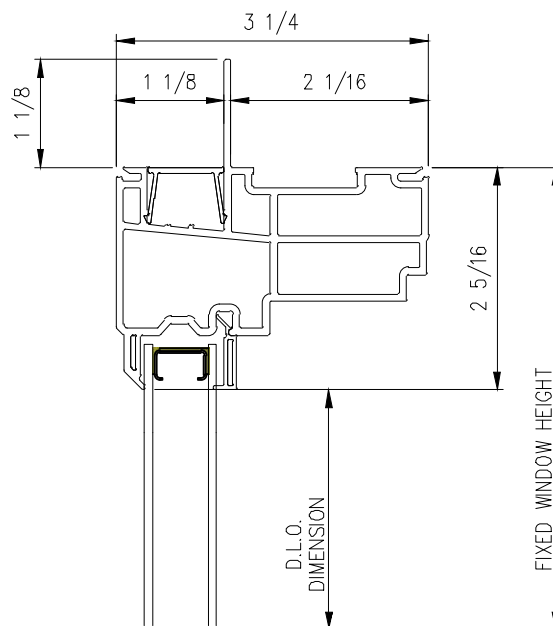
6 MULLION V-SECTION
3800 Scale: N.T.S.



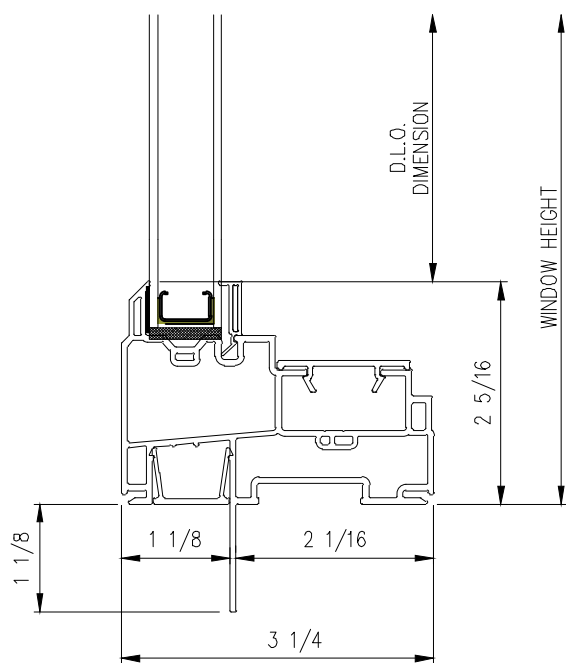
5 COMMON-JAMB SECTION
3800-2 SH Scale: N.T.S.



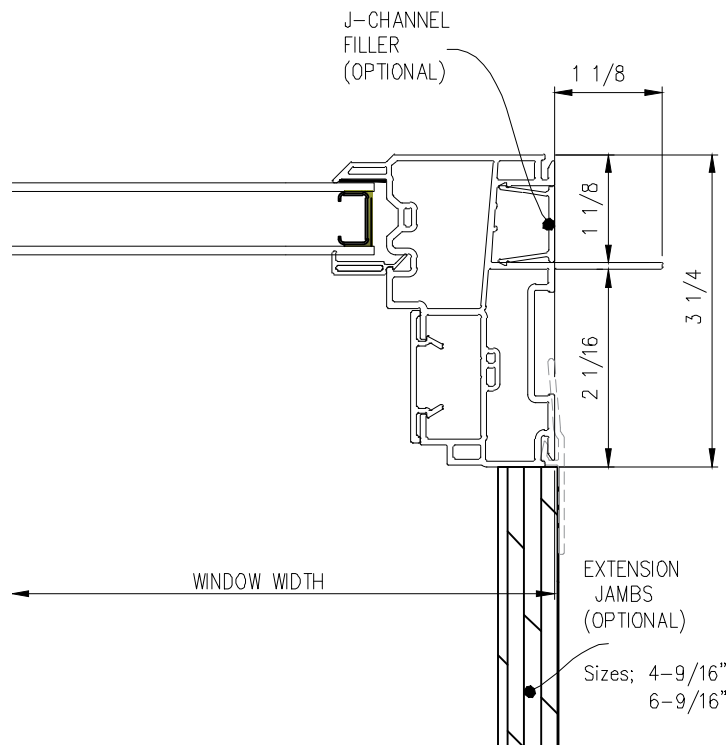
1A HEAD PW SECTION
3800 Scale: N.T.S.



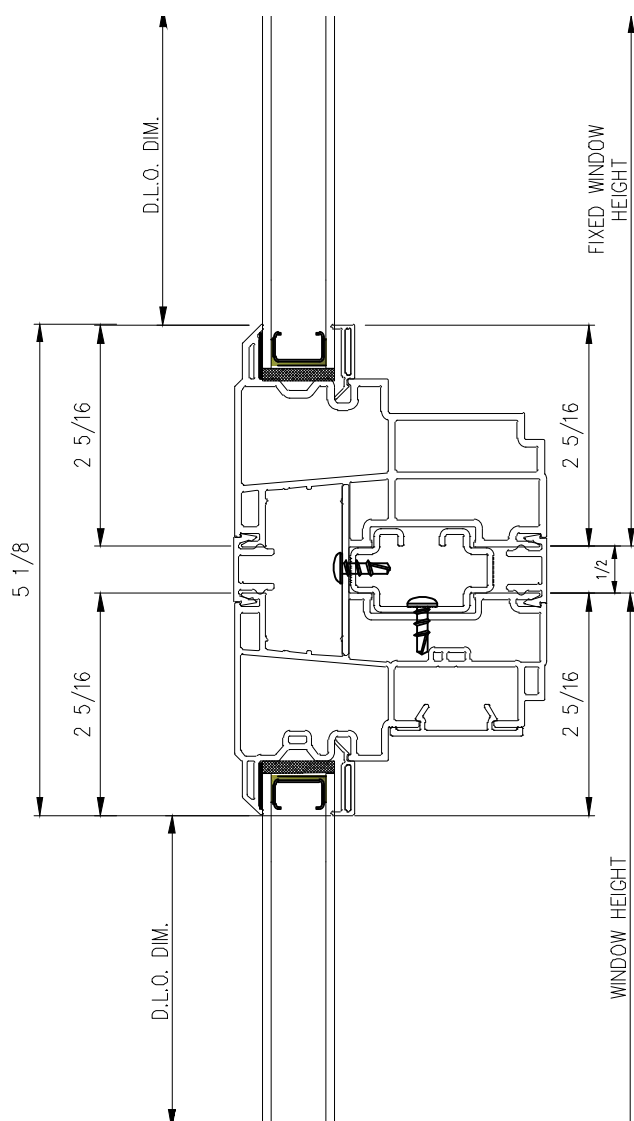
1SP HEAD CT SECTION
3800 Scale: N.T.S.



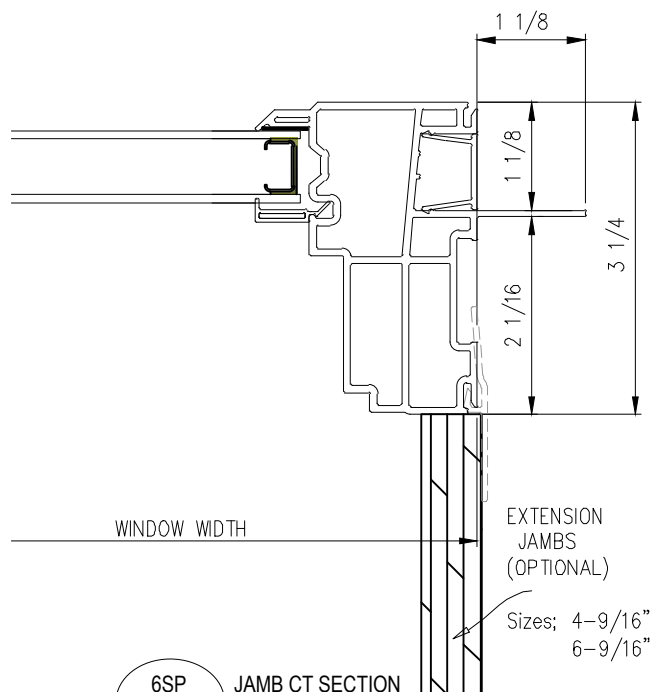
3A SILL PW SECTION
3800 Scale: N.T.S.



4A JAMB PW SECTION
3800 Scale: N.T.S.



6A MULLION H-SECTION
3800-1V Scale: N.T.S.

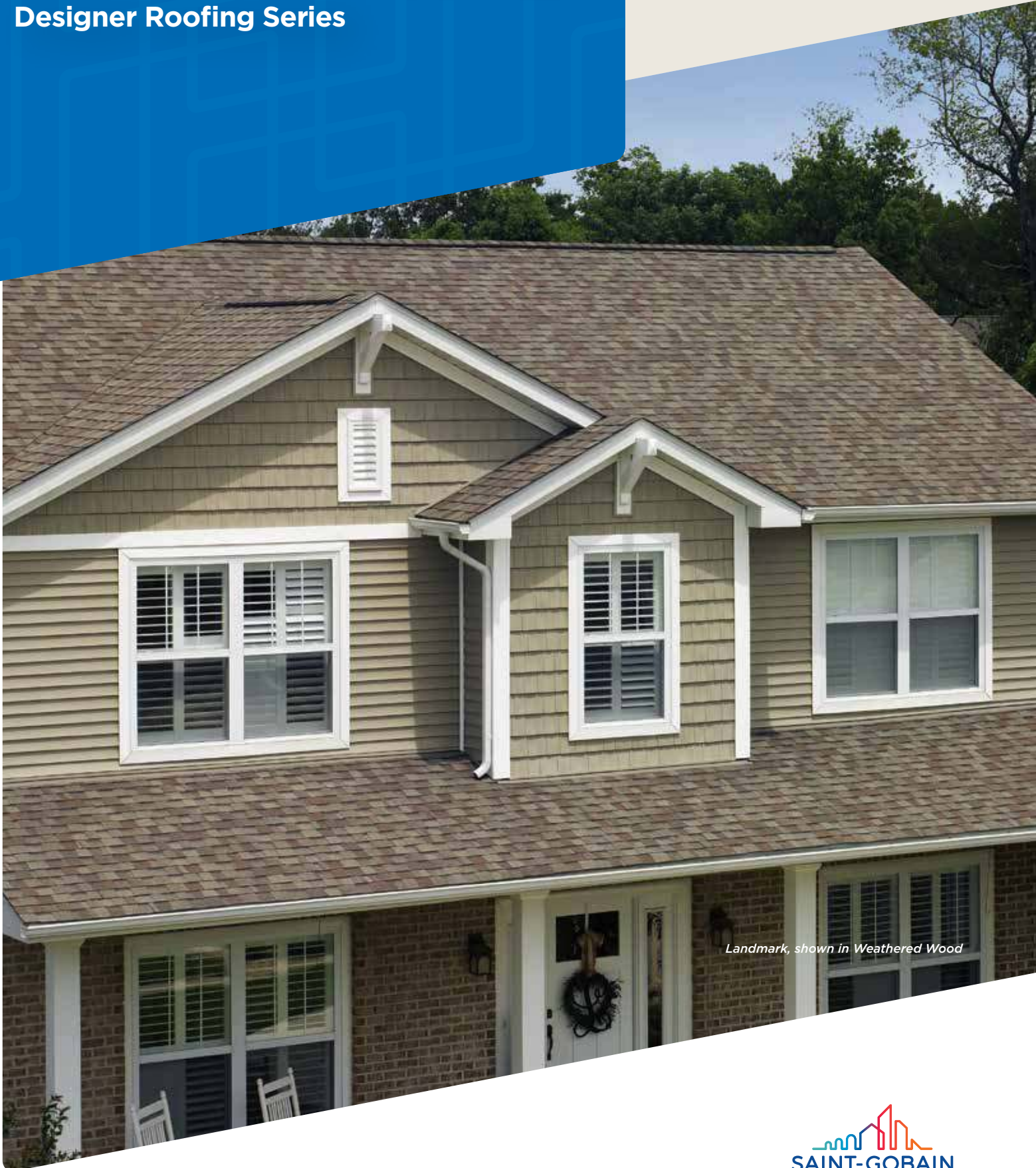


6SP JAMB CT SECTION
3800 Scale: N.T.S.

Landmark[®] Series

Designer Roofing Series

 **certainteed**
SAINT-GOBAIN



Landmark, shown in Weathered Wood


SAINT-GOBAIN



NOTE: Due to limitations of printing reproduction, CertainTeed can not guarantee the identical match of the actual product color to the graphic representations throughout this publication.



Trust Your Home to Landmark®

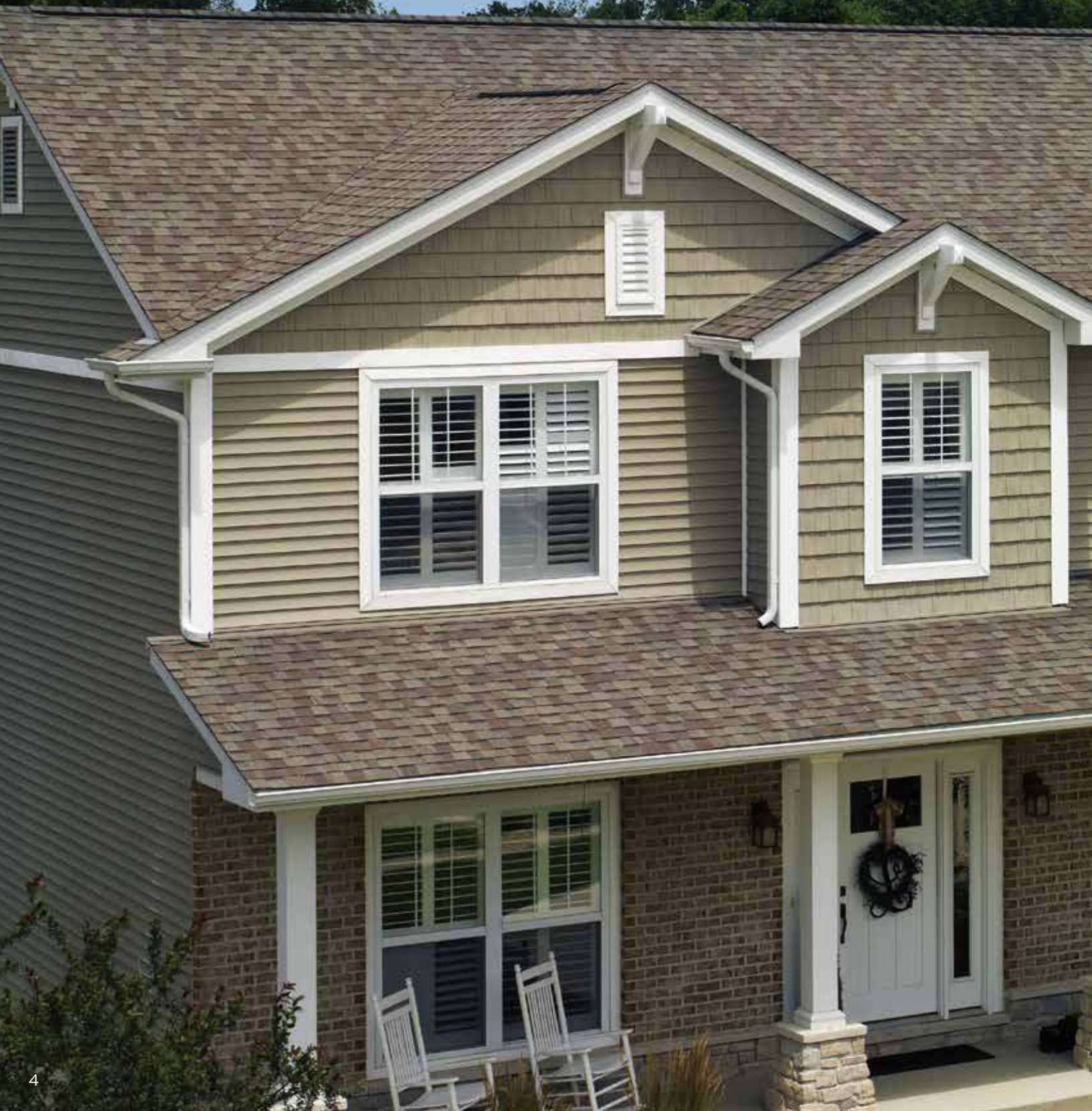
Few things in this world are as precious as the place that you call home. It is much more than just a house. It's the foundation from which you build your life. That's why having a roof that gives your home long-lasting curb appeal and protection from the elements is so important. At CertainTeed, our benchmark for success is our customers' total peace of mind. And we wouldn't have it any other way.

Our dedication to making the highest-quality roofing systems continues to earn the respect of top building professionals. And our product portfolio offers the widest variety of design and color options in the industry. It's no wonder that more than a million homeowners across North America choose CertainTeed each year.

And the job doesn't stop once the roof goes on. Every CertainTeed product is backed by our industry-leading manufacturer's warranty, allowing you to rest confidently and comfortably for years to come.

$$\begin{array}{ccccccc} \text{Q} & + & \text{Checkmark} & + & \text{SINCE 1904} & = & \text{PEACE OF MIND} \\ \text{High-Quality,} & & \text{Industry-} & & \text{Century of} & & \\ \text{Reliable} & & \text{Best} & & \text{Trusted} & & \\ \text{Choice} & & \text{Warranty} & & \text{Performance} & & \end{array}$$

Technology that protects
the beauty of your roof and
strengthens its performance.





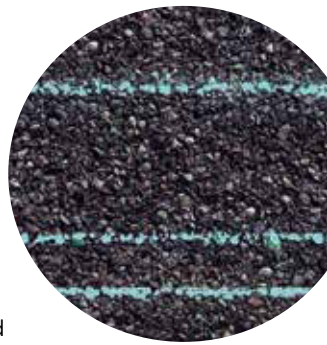
NailTrak[®]

Fast, Accurate, Visible

The new and improved **NailTrak** nailing line, a feature on CertainTeed designer shingles.

Now **NailTrak** is brighter than ever before, with high-visibility lines that stand out whether it's daybreak or dusk.

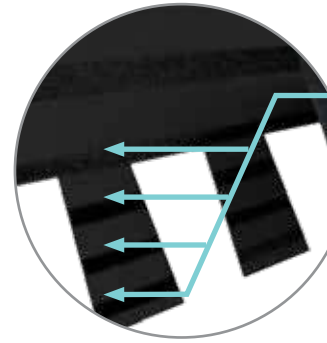
NailTrak removes the guesswork with three separately defined lines, creating a large area to guide your nailing and a smaller area for extreme steep-slope applications.



QuadraBond[®]

Advanced Layering

CertainTeed's specially formulated adhesive adheres shingle layers at four points, more than any other manufacturer. This superior bond provides greater protection against shingle delamination to maximize performance over the life of the shingle in any climate.



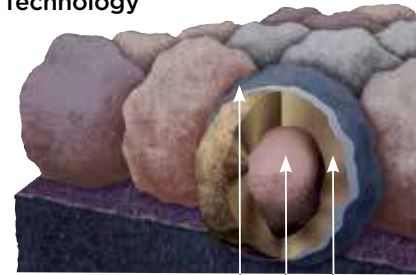
StreakFighter[®]

Algae Resistance

The ultimate in stain protection.

Those streaks you see on other roofs in your neighborhood? That's algae, and it's a common eyesore on roofing throughout North America. CertainTeed's **StreakFighter** technology uses the power of science to repel algae before it can take hold and spread. **StreakFighter's** granular blend includes naturally algae-resistant copper, helping your roof maintain its curb appeal and look beautiful for years to come.

Granule with StreakFighter Technology

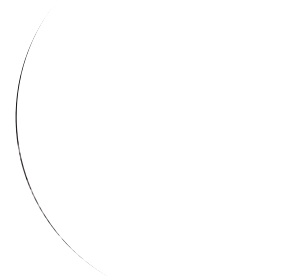


Ceramic coating
Mineral core
Copper layer
Diagram for illustrative purposes only.

CertaSeal[®]

Uplift Protection

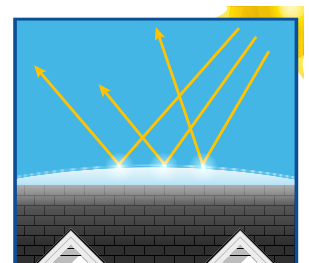
CertaSeal[®] is a fast-activating modified asphalt sealant with a 20-year record of proven performance. Designed to seal shingles together upon installation, it protects roofs from wind uplift and shingle blow-off so that homes stay safe and dry. It's also engineered to remain flexible after installation, unlike harder sealants that can dry out and crack over time.



Solaris[®] CoolRoof

Solar Reflectivity

Solaris[®] Cool Roof is a sustainable shingle granule technology that applies energy-saving cool roof performance to CertainTeed's most popular shingle brands. Available in rich and authentic colors, including dark hues and tones, Solaris Cool Roof can lower roof temperatures and allow homeowners to reduce cooling costs without sacrificing beauty, quality, or color.







The Trusted Classic

LANDMARK®

Owning a Landmark roof brings peace of mind. Landmark's dual-layered construction and exceptional durability provide long-lasting protection for your home.

- **Now classified as UL 2218 Class 3 Impact Rated**
- Dual-layered for extra dimensionality and protection from the elements
- Offers the widest array of colors in the industry
- Independently certified as meeting the highest quality standards for roofing



Silver Birch



Scan code for
more information

LANDMARK® COLOR PALETTE



Silver Birch



Cobblestone Gray



Georgetown Gray



Pewter



Moiré Black



Heather Blend

LANDMARK® **Solaris®** *CoolRoof* COLOR PALETTE



Graphite
CRRP Product ID 0668-0155



Weathered Wood
CRRP Product ID 0668-0119



Weathered Wood



Driftwood



Colonial Slate



Burnt Sienna



Resawn Shake



Outstanding Durability

LANDMARK®
ClimateFlex®

Featuring the latest advances in polymer science, CertainTeed's **ClimateFlex** technology works at a molecular level to make shingles strong and pliable. The rubber-like qualities of the **ClimateFlex** asphalt formula provides each shingle with improved hail resistance, cold-weather flexibility and granule adhesion.

- Highest industry-rated impact protection
- Better pliability and granule adhesion
- Endures weathering and cold-weather extremes



Colonial Slate



Scan code for
more information

LANDMARK® ClimateFlex® COLOR PALETTE



Colonial Slate



Weathered Wood



Burnt Sienna



Resawn Shake



Moiré Black



Heather Blend





The Expert's Choice

LANDMARK® PRO

A refined union of vision and value, our PRO line leads its class in optimal performance and variety of color.

- **Now classified as UL 2218 Class 3 Impact Rated**
- Engineered to meet professional contractors' exacting specifications
- Available in a wide selection of eye-catching **Max Def** colors
- Outweighs standard laminates to provide greater protection from the elements



Max Def Moiré Black



Scan code for
more information

LANDMARK® PRO COLOR PALETTE



Max Def Cobblestone Gray



Max Def Georgetown Gray



Max Def Driftwood



Max Def Prairie Wood



Max Def Espresso



Max Def Heather Blend



Max Def Resawn Shake



Max Def Coastal Blue

MAX DEF COLORS

Look deeper. With Max Def, a new dimension is added to shingles with a richer mixture of surface granules. You get a brighter, more vibrant, more dramatic appearance and depth of color. And the natural beauty of your roof shines through.



Max Def Colonial Slate



Max Def Weathered Wood



Max Def Pewter



Max Def Moiré Black



Max Def Shenandoah



Max Def Burnt Sienna



Max Def Red Oak



Max Def Evergreen



Outstanding Durability

NORTHGATE® **ClimateFlex**®

Featuring the latest advances in polymer science, CertainTeed's **ClimateFlex** technology works at a molecular level to make shingles strong and pliable. The rubber-like qualities of the **ClimateFlex** asphalt formula provides each shingle with improved hail resistance, cold-weather flexibility, and granule adhesion than traditional asphalt shingles.

- Highest industry-rated impact protection
- Better pliability and granule adhesion
- Endures weathering and cold-weather extremes



Max Def Weathered Wood



Scan code for
more information

NorthGate ClimateFlex, shown in Max Def Weathered Wood

See next page for full color palette.

NORTHGATE® ClimateFlex® COLOR PALETTE



Max Def Driftwood



Max Def Granite Gray



Max Def Georgetown Gray



Max Def Moiré Black



Max Def Burnt Sienna



Max Def Resawn Shake

MAX DEF COLORS

Look deeper. With Max Def, a new dimension is added to shingles with a richer mixture of surface granules. You get a brighter, more vibrant, more dramatic appearance and depth of color. And the natural beauty of your roof shines through.



Max Def Pewter



Max Def Weathered Wood



Max Def Espresso



Max Def Heather Blend



Max Def Hunter Green



Silver Birch
CRRC Product ID 0668-0072



9434

Top Shelf

LANDMARK[®] PREMIUM

A sophisticated look, brilliantly executed. Our Premium line is engineered to protect, enhance and endure.

- Outclasses ordinary roofing in both appearance and performance
- Tough two-piece laminated fiberglass-based construction
- Features **Max Def** colors for a deeper, richer mixture of surface granules



Max Def Weathered Wood



Scan code for
more information

LANDMARK® PREMIUM COLOR PALETTE



Max Def Weathered Wood



Max Def Driftwood



Max Def Moiré Black



Max Def Heather Blend



Max Def Burnt Sienna

MAX DEF COLORS

Look deeper. With Max Def, a new dimension is added to shingles with a richer mixture of surface granules. You get a brighter, more vibrant, more dramatic appearance and depth of color. And the natural beauty of your roof shines through.



Strength with Style

LANDMARK®

- Certified to meet UL 2218 Class 3 Impact Resistance
- Dual-layer durability
- Industry-best lifetime limited warranty
- 25-year **StreakFighter**® algae-resistance warranty
- **Solaris**® *CoolRoof* colors have a Solar Reflectance Index greater than 20 SRI.

LANDMARK® **ClimateFlex**®

- Certified to meet UL 2218 Class 4 Impact Resistance
- Dual-layer, high performance
- Industry-best lifetime limited warranty
- 25-year **StreakFighter**® algae-resistance warranty

LANDMARK® PRO

- Certified to meet UL 2218 Class 3 Impact Resistance
- Dual-layer, high performance
- Max Def color palette
- Industry-best lifetime limited warranty
- 30-year **StreakFighter**® algae-resistance warranty

NORTHGATE® **ClimateFlex**®

- Certified to meet UL 2218 Class 4 Impact Resistance
- Dual-layer, high performance
- Max Def color palette
- Industry-best lifetime limited warranty
- 30-year **StreakFighter**® algae-resistance warranty

LANDMARK® PREMIUM

- Dual-layer, high performance
- Max Def color palette
- Industry-best lifetime limited warranty
- 30-year **StreakFighter**® algae-resistance warranty



LANDMARK SERIES

SPECIFICATIONS

- Two-piece laminated fiberglass-based construction
- Classic shades and dimensional appearance of natural wood or slate
- **Solaris**[®] *CoolRoof* colors have a Solar Reflectance Index greater than 20 SRI.

For U.S. building code compliance, see product specification sheets.

CertainTeed products are tested to ensure the highest quality and comply with the following industry standards:

Fire Resistance:

- UL Class A
- UL certified to meet ASTM D3018 Type 1

Wind Resistance:

- UL certified to meet ASTM D3018 Type 1
- ASTM D3161 Class F

Tear Resistance:

- UL certified to meet ASTM D3462
- CSA standard A123.5

Wind Driven Rain Resistance:

- Miami-Dade Product Control Acceptance: Please reference www.certainteed.com to determine approved products by manufacturing location.

Impact Resistance:

- Certified to meet UL 2218 Class 4 (Landmark **ClimateFlex**[®] and NorthGate **ClimateFlex**[®])
- Certified to meet UL 2218 Class 3 (Landmark and Landmark PRO)

Quality Standards:

- ICC-ES-ESR-1389 & ESR-3537

WARRANTY

- Lifetime limited transferable warranty against manufacturing defects on residential applications
- 50-year limited transferable warranty against manufacturing defects on group-owned or commercial applications (Landmark PRO, NorthGate **ClimateFlex**[®] and Landmark Premium)
- 40-year limited transferable warranty against manufacturing defects on group-owned or commercial applications (Landmark and Landmark **ClimateFlex**[®])
- **StreakFighter**[®] algae-resistance warranty (25-year – Landmark and Landmark **ClimateFlex**[®], 30-year – Landmark PRO, NorthGate **ClimateFlex**[®] and Landmark Premium)
- 10-year SureStart[™] protection
- 15-year 110 mph wind-resistance warranty
- Wind warranty upgrade to 130 mph available. CertainTeed starter and CertainTeed hip and ridge required

See actual warranty for specific details and limitations.

Product Comparison

	Traditional Designer Shingle Style	Industry Leading Granule Adhesion	Warranty Duration	Algae Warranty Coverage	Product Weight	Depth/ Dimensional Appearance
Landmark	✓	✓	Lifetime	25-Year	✓	✓
Landmark Solaris [®] CoolRoof	✓	✓	Lifetime	25-Year	✓	✓
Landmark ClimateFlex [®]	✓	✓	Lifetime	25-Year	✓	✓
Landmark PRO	✓	✓	Lifetime	30-Year	✓✓	✓✓
NorthGate ClimateFlex [®]	✓	✓	Lifetime	30-Year	✓✓	✓✓
Landmark Premium	✓	✓	Lifetime	30-Year	✓✓✓	✓✓



NailTrak	Max Def Colors	ClimateFlex Technology (Cold Weather Installation)	ClimateFlex Technology (Impact Resistance)	UL 2218 Impact Rated	Cool Roof Technology (Solar Reflectivity)	Value Rating
✓				Class 3		Good
✓				Class 3	✓	Good
✓		✓	✓	Class 4		Better
✓	✓			Class 3		Better
✓	✓	✓	✓	Class 4		Best
✓	✓					Best



The ColorView[®] Visualizer: Design your Dream Home with the Click of a Mouse

CertainTeed created the ColorView tool to help homeowners bring their creative vision to reality.

Just look through a photo library of homes to choose one that looks most like your own. Then click on the roof to easily switch designs and see what CertainTeed product looks best. You can choose from hundreds of different roofing design and color combinations, and even add roof accents in different colors. All before anyone raises a hammer.

Want to visualize different roofing styles on your own home? You can upload photos to ColorView and have them digitally masked by one of our design professionals, or use DIY mode to upload and mask your own photos.

Plus, you can print or share your ColorView photos with family and friends to get their feedback. Visit colorview.certainteed.com and get started.





Add a Little Accent to Your Roof

The visually impactful choice for capping the hips and ridges of your roof, CertainTeed's Cedar Crest® accessory shingles will complement or match any shingle in the Landmark Series. For a low-profile hip and ridge look, CertainTeed also offers Shadow Ridge® accessory shingles. Also available in **ClimateFlex** version.

Color Companion Products for Flat Roof Areas

With CertainTeed Flintlastic® SA, you can coordinate flat roof areas like carports, canopies and porches with your main roof. Flintlastic SA is a self-adhering low slope roofing product available in ten colors that complement some of the most popular CertainTeed shingles.





Integrity Roof System™

A COMPLETE APPROACH TO LONG LASTING BEAUTY AND PERFORMANCE



With as much care as you take in selecting the right contractor, choosing the right roof system is equally as important. A CertainTeed Integrity Roof System combines key elements that help ensure you have a well-built roof for long-lasting performance.

1. Waterproofing Underlayment

The first step in your defense against the elements. Self-adhering underlayment is installed at vulnerable areas of your roof to help prevent leaks from wind-driven rain and ice dams.

2. Water-Resistant Underlayment

Provides a protective layer over the roof deck and acts as a secondary barrier against leaks.

3. Starter Shingles

Starter Shingles are the first course of shingles that are installed and designed to work in tandem with the roof shingles above for optimal shingle sealing and performance.

4. Shingles

Choose from a variety of Good-Better-Best styles to complement any roof design and fit your budget.

5. Ventilation

A roof that breathes is shown to perform better and last longer. Ridge Vents, in combination with Intake Vents, allow air to flow on the underside of your roof deck, keeping the attic cooler in the summer and drier in the winter.

6. Hip & Ridge Caps

Available in numerous profiles, these accessories are used on the roof's hip and ridge lines for a distinctive finishing touch to your new roof.

learn more at:

certainteed.com/roofing

Landmark® Series
available in
areas shown



CertainTeed

Ceilings • Gypsum • Insulation • Roofing • Siding • Trim

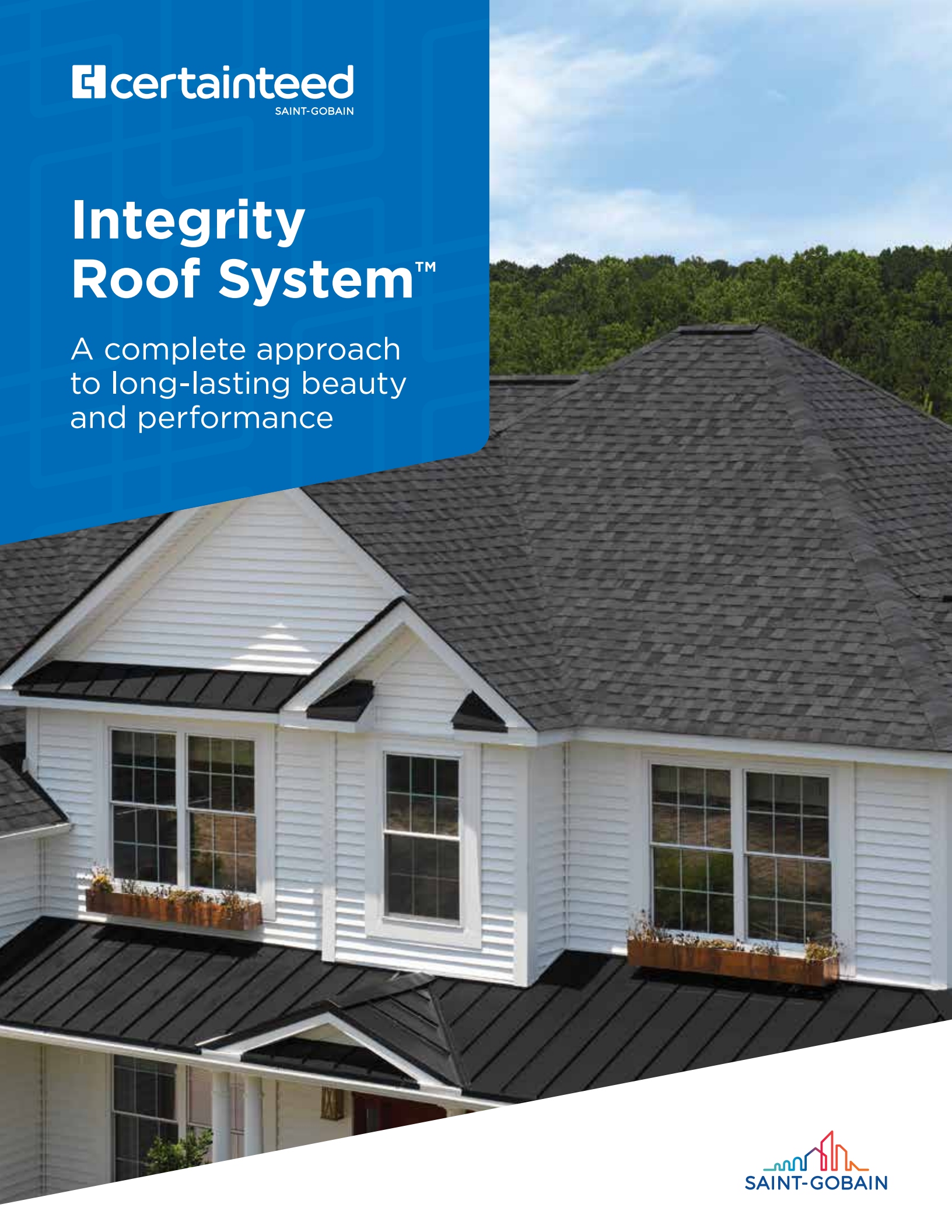
20 Moores Road, Malvern, PA 19355 | 800-233-8990 | certainteed.com

©01/25 CertainTeed, Printed in the USA, Code No. 00-00-138-US-EN



Integrity Roof System™

A complete approach
to long-lasting beauty
and performance



The System Works

Benefits of the CertainTeed Integrity Roof System™



Insist upon the Integrity Roof System™ and get the ultimate in roof performance!

With as much care as you take in selecting the right contractor, choosing the right roof system is equally as important. A CertainTeed Integrity Roof System™ combines key elements that help ensure you have a well-built roof for long-lasting performance.

It all starts with CertainTeed's broad line of shingles, featuring brilliant color blends, dramatic styles and shadow lines, and the strongest warranties in the industry. The right shingle can mean the difference between an average, everyday look or a beautiful roof that's the talk of the neighborhood.

Shingles are just the beginning — to keep your new roof performing and looking great for years to come it takes a complete CertainTeed Integrity Roof System approach.

1. Waterproofing Underlayment

The first step in your defense against the elements. Self-adhering underlayment is installed at vulnerable areas of your roof to help prevent leaks from wind-driven rain and ice dams.*

2. Water-Resistant Underlayment

Provides a protective layer over the roof deck and acts as a secondary barrier against leaks.

3. Starter Shingles

Starter Shingles are the first course of shingles that are installed and designed to work in tandem with the roof shingles above for optimal shingle sealing and performance.

4. Shingles

Choose from a variety of Good-Better-Best styles to complement any roof design and fit your budget.

5. Ventilation

A roof that breathes is shown to perform better and last longer. Ridge Vents, in combination with CertainTeed Intake Vents or Soffit Vents, allow air to flow on the underside of your roof deck, keeping the attic cooler in the summer and drier in the winter.

6. Hip & Ridge Caps

Available in numerous profiles, these accessories are used on the roof's hip and ridge lines for a distinctive finishing touch to your new roof.

Low-Slope Sections

CertainTeed Flintlastic® and SMARTCOAT™ roofing products are also available for low-slope roof areas.



* Waterproofing Underlayment is not typically applied at the eaves in climate areas not prone to snow and ice.



Products that perform.

CertainTeed has all of the products you need to make the Integrity Roof System™ work for you. From the edges to the hips and ridges. From the underlayment to the finished surface. CertainTeed products work together to help ensure your roof system performs at the highest level.

Waterproofing Underlayment

WinterGuard® Series
DryRoof® SA
GRACE VYCOR® Series

Water-Resistant Underlayment

DiamondDeck®
RoofRunner®
RoofRunner® AIR

Starter Shingles

SwiftStart®
High-Performance Starter
Presidential® Starter

Shingles

A wide variety of styles to fit any home, covered by the strongest warranty in the business.

Hip & Ridge Caps

Shadow Ridge®
CedarCrest®
Mountain Ridge®
Shangle® Ridge

Ventilation

CertainTeed® Ridge Vent
CertainTeed® Rolled Ridge Vent
CertainTeed Intake Vent
CertainTeed Soffit Vent

Some products are region-specific.

learn more at:

certainteed.com/roofing



CertainTeed

Ceilings • Gypsum • Insulation • Roofing • Siding • Trim
20 Moores Road, Malvern, PA 19355 | 800-233-8990 | certainteed.com

©01/25 CertainTeed, Printed in the USA, Code No. 13-00-1916-NA-EN

Garage Door Specifications



MODEL 8600 (Formerly Model 6600)

DOOR FEATURES

Section Joints

Snug fitting tongue-and-groove section joints reduces wind and weather from entering the garage.

Durable DecaTrim™ II Overlays

These overlay boards are specially treated to resist termites, weather and fungal decay.

Foamed-In-Place Polyurethane Insulation

Provides thermal efficiency with a U-factor* of 0.15 and an R-value** of 12.12, helps block street noise and makes the door operate more quietly.

*U-factor is independently tested and verified per ANSI/DASMA 105 using solid doors and specific product sizes.

**Wayne Dalton uses a calculated door section R-value for our insulated doors.

High Cycle Spring Option

Choose a 25,000 cycle spring for more than twice the life of a standard torsion spring.

Heavy Duty Hinges

Attractive 14-gauge heavy duty hinges provide maximum strength between sections, stability and smoother door operation.

Quiet Rollers

Ball-bearing rollers with nylon wheels and solid steel shafts provide years of smooth, quiet and dependable service.

Wind Load Options

Available with hardware and reinforcements to comply with building codes in regions with high winds.

Limited Lifetime Warranty

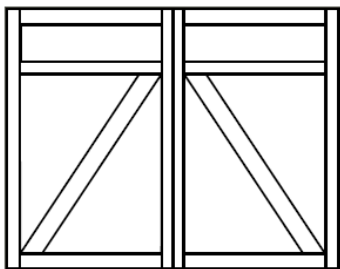
WIND SAFE IMPACT



Routed windows



Stockbridge

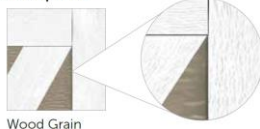


Springfield



White/White
Garage doors to be painted,
per Color Collection Packages

DecaTrim™ II Overlay Texture Options



Wood Grain

MODEL 9100

Classic Steel

- Steel panels with distinctive designs
- Foamed-in-place polyurethane insulation
- U-factor* = 0.26
- R-value** = 9

- Pinch-resistant door panels
- Limited Lifetime Warranty

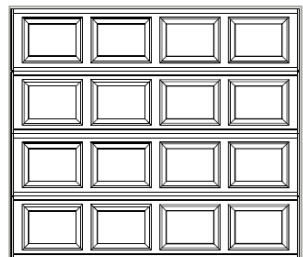
MODEL	DOOR WIDTH UP TO	WIND SPEED / DESIGN PRESSURE MPH ¹ / MPH ² / PSF DESIGN PRESSURE	IMPACT RESISTANT	GLASS AVAILABLE	
				STANDARD	IMPACT
Model 9100					
	16'	100 - 175 mph ¹ / 120 - 210 mph ² / (+12.70/-14.40) - (+39.20/-43.70)	YES ³	SHORT WINDOW/ LONG WINDOW ³	SHORT WINDOW/ LONG WINDOW ³



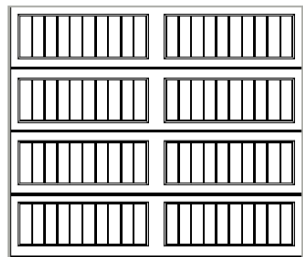
Clear Short



Stockton Short



Short Panel



Vertical Long Panel



White



White

Garage doors to be painted, per Color Collection Packages

MESA

STANDARD MODEL INCLUDES:

- 8 pitch roof
- Western red cedar timbers (also available in white pine)
- Solid cedar 8" X 8" posts (no wire chase)
- 4" X 10" beams — 4" X 6" rafters
- 2" X 6" tongue-and-groove pine sheathing
- 12" eave overhang
- 16" gable overhang



(Shown above): White pine



Mesa Pavilion
10x12

DRAWN BY: Wayne.B

DATE:8/8/2024

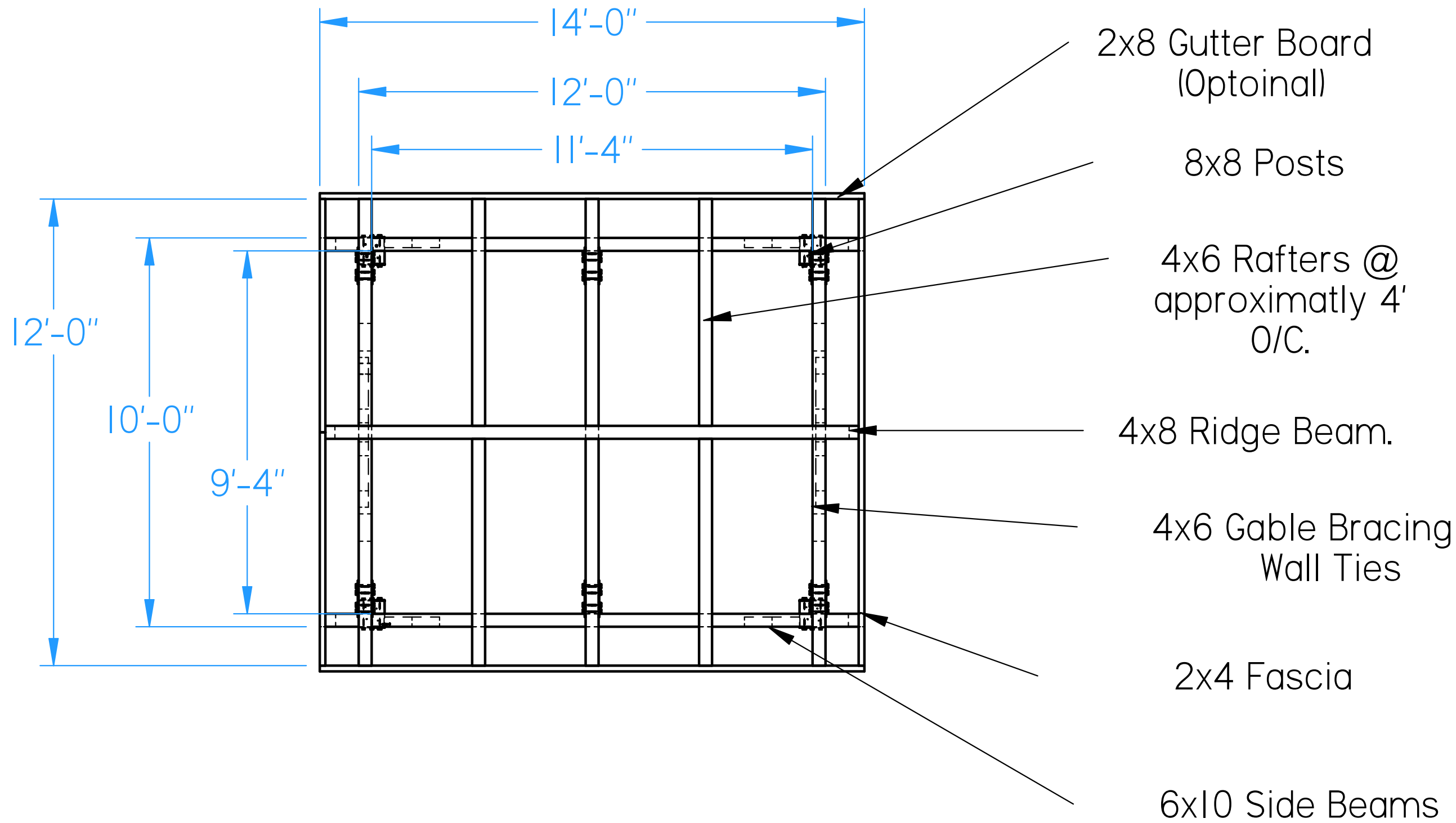
PROJECT:
Mesa Pavilion.dft

Mesa Pavilion
10x12

DRAWN BY: Wayne.B

DATE:8/8/2024

PROJECT:
Mesa Pavilion.dft



FLOOR PLAN

Design Complies with Ohio Residential Code 2019 and The Ohio Building Code 2017
Structural Design Based On ASCE 7 - 10
Snow Load:
Ground Snow Load = 20 Psf
Snow Exposure Factor For Terrain Category B = 1.0
Unbalanced Snow Load, Does Not Apply
Roof LL = 2- psf
Roof DL = 10 psf

Wind Load:
Basic Wind Speed = 115 MPH
Wind Pressure For Exposure B Per Table
Importance Factor For Category II = 1.0

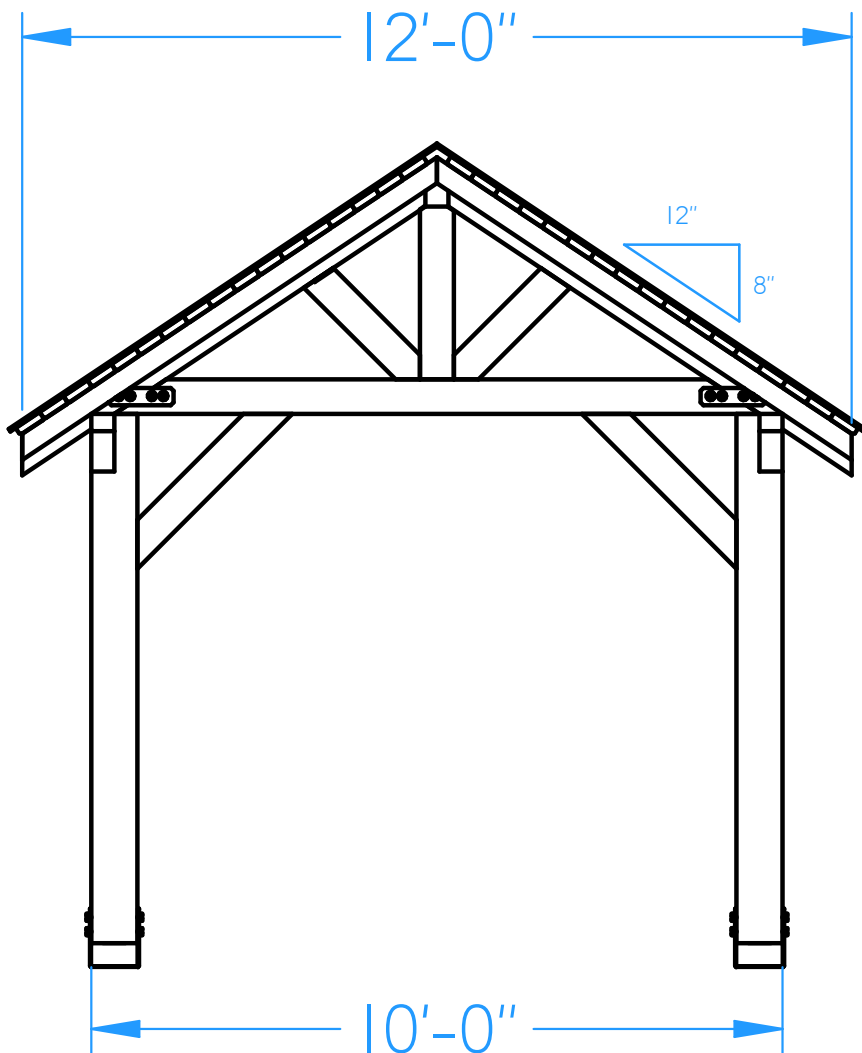
SEISMIC DESIGN

S5 = 15
SI = 6
Site Class = D
Designed Using Simplified
Lateral Force Analysis
Procedures.
F = 1.0
Fa = 1.4
Sds = 1.0
R = 7

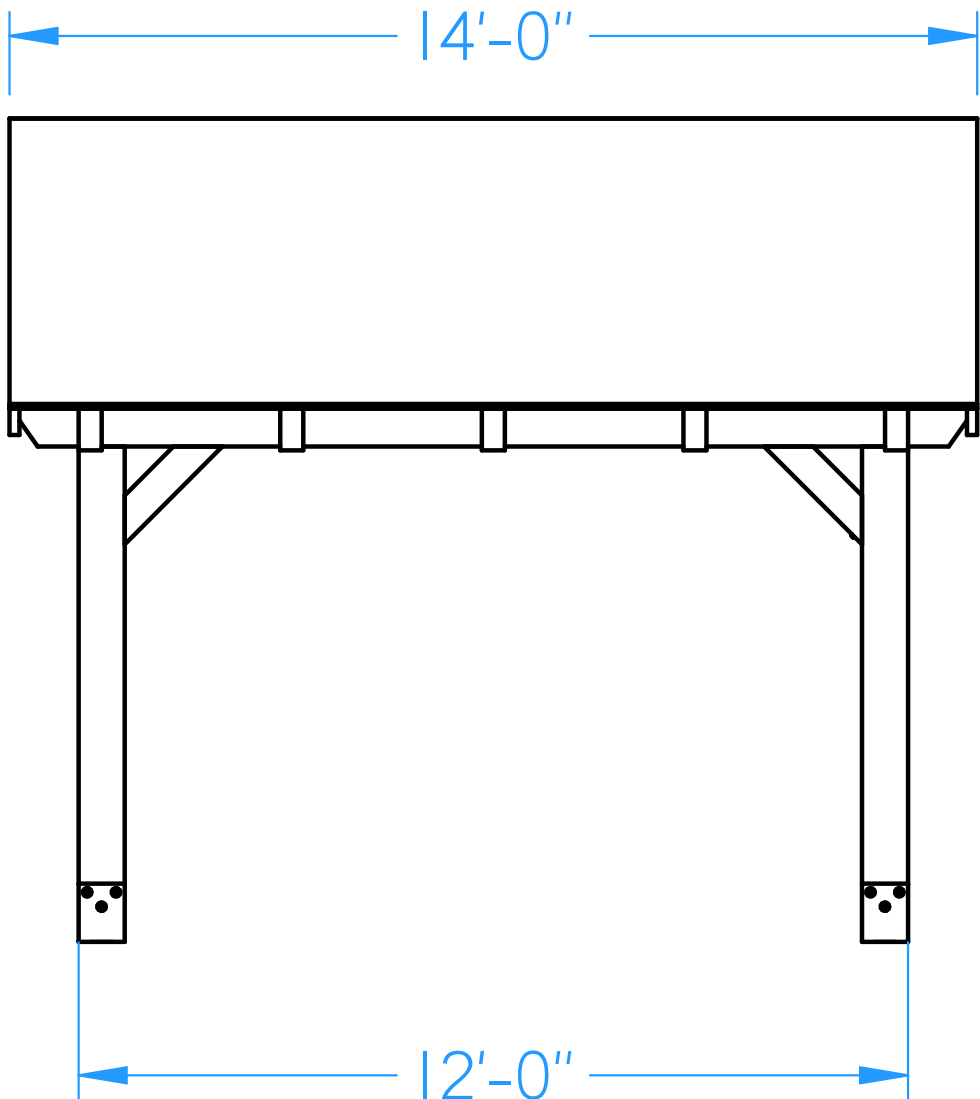
STRUCTURAL PLANS ONLY.
OTHERS RESPONSABLE FOR
MEETING ALL OTHER STATE AND
LOCAL REQUIREMENTS AND
REQUIRED SUBMITTAL

All materials, rough sawn
Eastern White Pine #2 or better
grade unless noted otherwise.

All fastners are Big Timber WTX
or BTX Construction screws at
length and diameter specified
W/ Coating approved for use in
Preservative Treated Wood
unless noted otherwise.

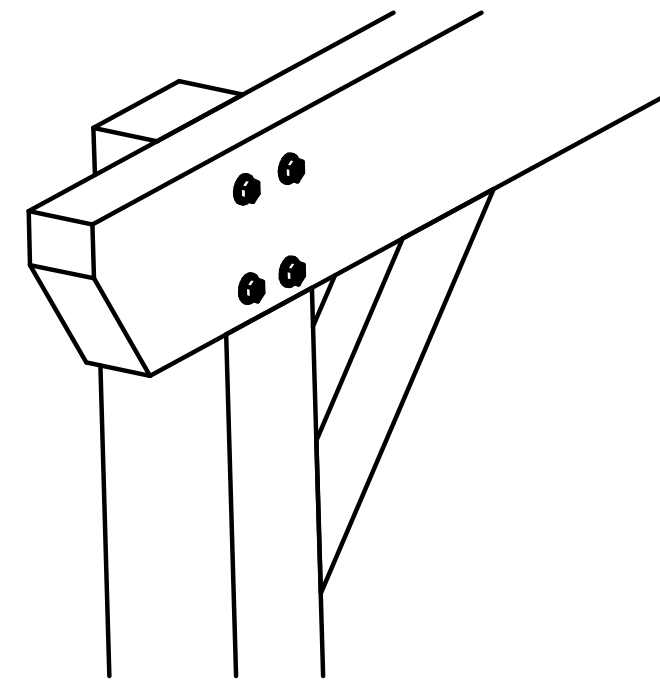


END ELEVATION



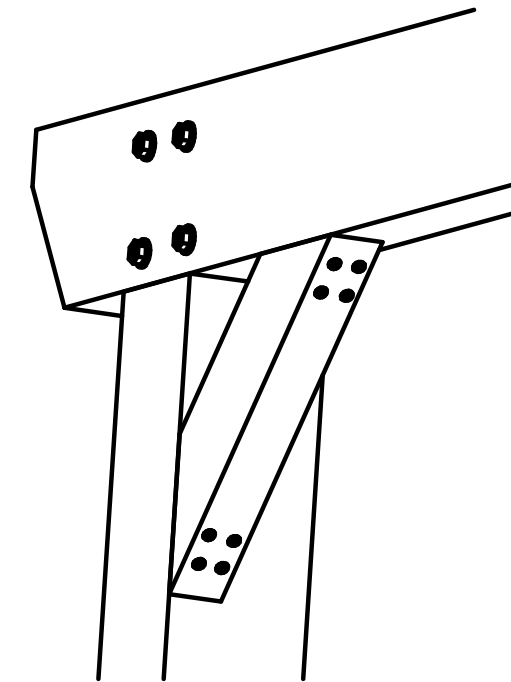
SIDE ELEVATION

Beams set on notched posts, Beams fastened to posts W/ 5/16" x 6" lags



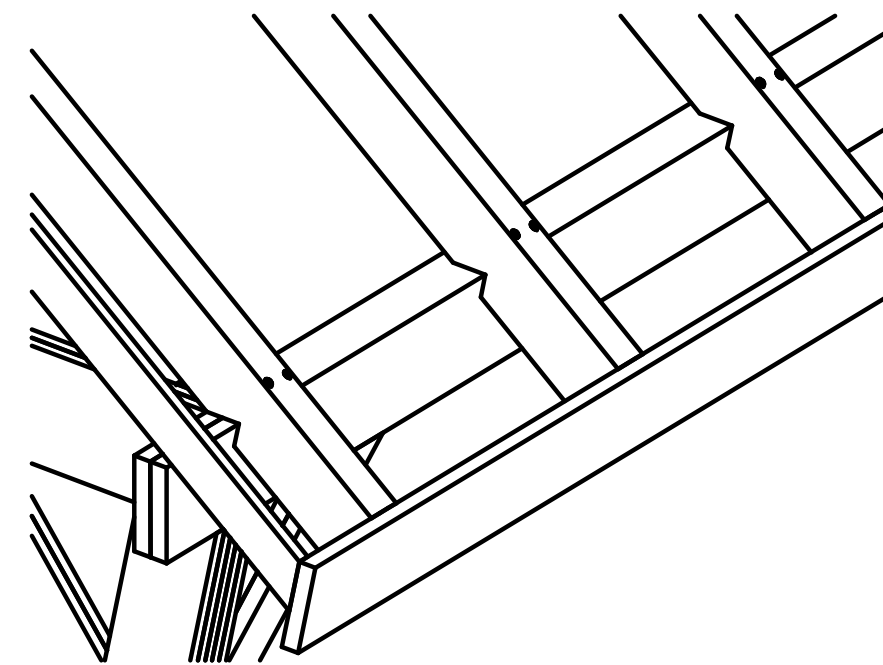
BEAM / POST CONNECTION

Braces fastened W/ (2) 5/16 x 5" & (2) 5/16 x 6" lags each end.



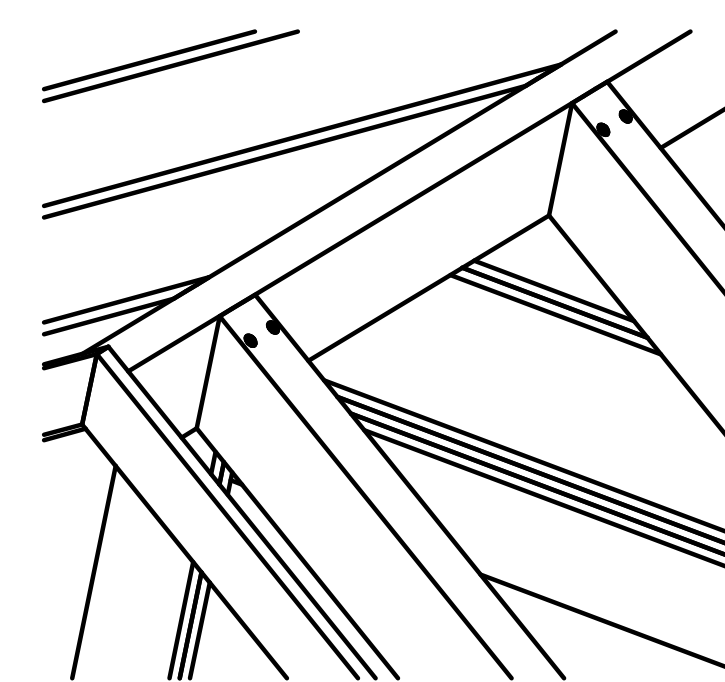
BRACE CONNECTION

Rafters fastened to Beam W/ (2) 5/16 x 8" lags per rafter.



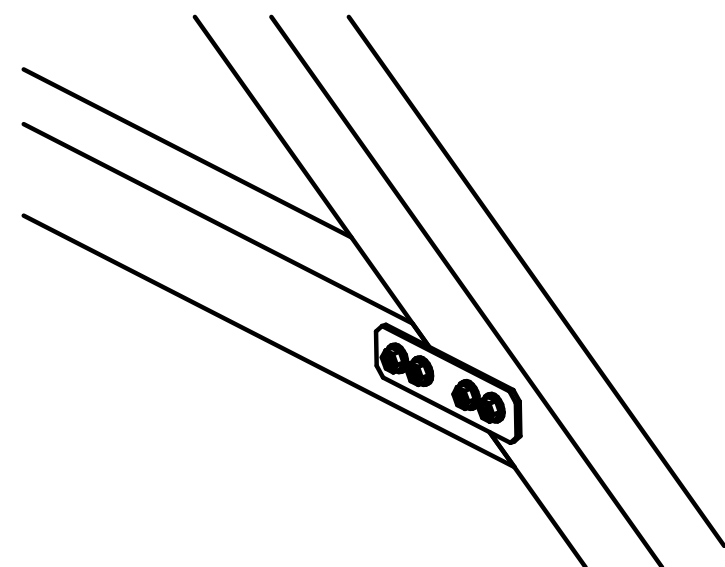
RAFTER / BEAM CONNECTION

Rafters fastened to Ridge Beam W/ (2) 5/16 x 6" lags per rafter.



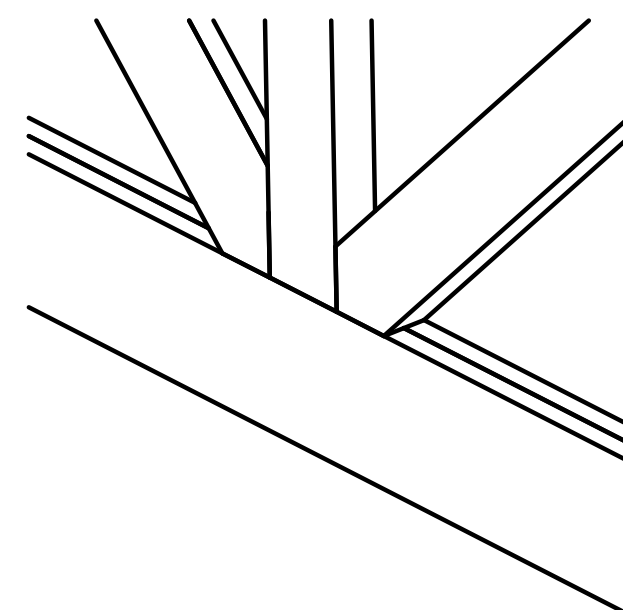
RAFTER / RIDGE BEAM CONNECTION

Collar Ties fastened to Rafter W/ Simpson metal bracket & (4) 5/16 x 3 1/2" lags each side of each end.



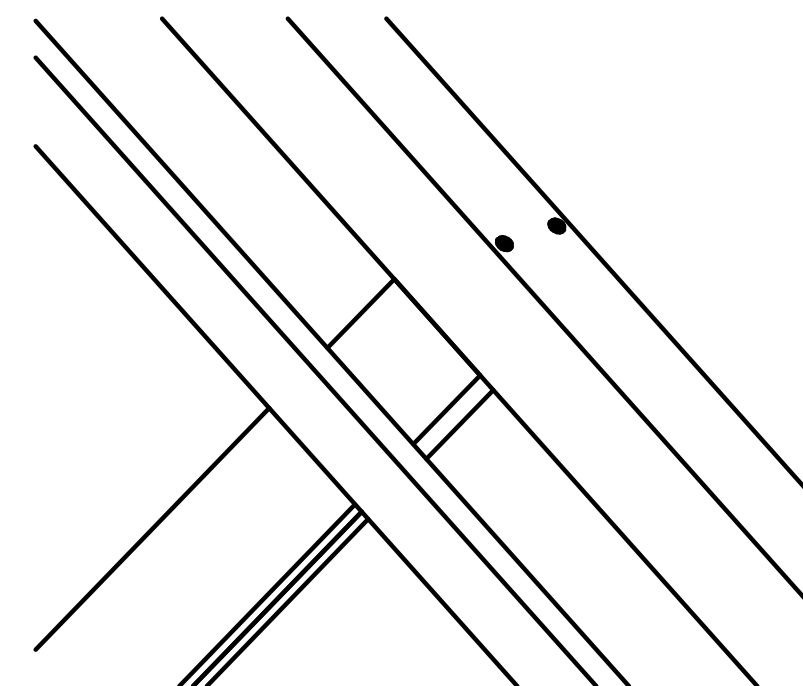
COLLAR TIE CONNECTION

Gable Bracing fastened to Beam W/ (1) 5/16 x 8" lag per brace



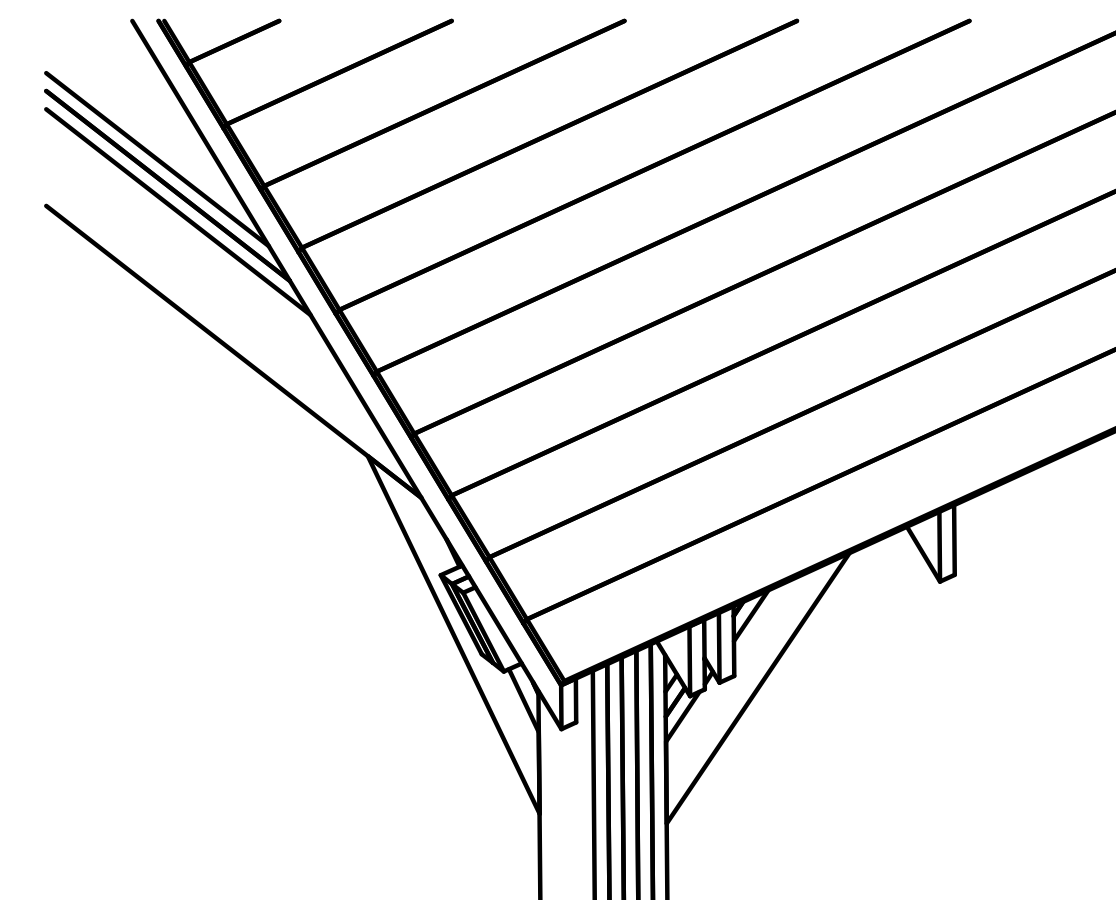
GABLE BRACING / BEAM CONNECTION

Gable Bracing fastened to Rafter W/ (2) 5/16 x 8" lag per brace



GABLE BRACING / END RAFTER CONNECTION

2x6 T&G SYP Roof Sheathing. Fastened W/ (2) #8 x 3" screws or nails per rafter.



ROOF SHEATHING CONNECTION

GENERAL NOTES:

- FT Synthetics underlayment on top of roof sheathing.
- 30 Yr. asphalt shingles or 29 GA. painted steel roofing.

Mesa Pavilion
10x12

DRAWN BY: Wayne.B

DATE:8/8/2024

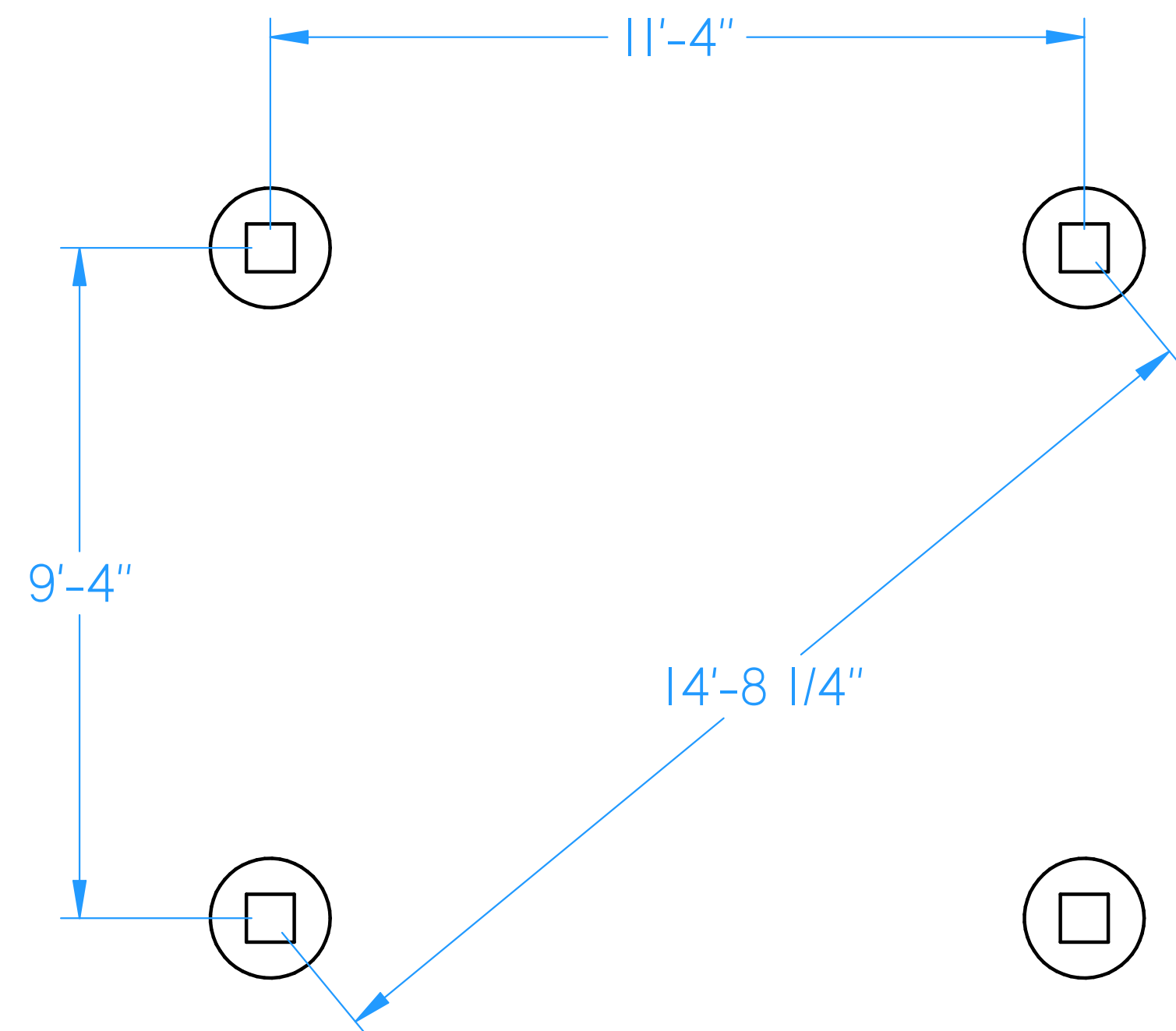
PROJECT:
Mesa Pavilion.dft

Mesa Pavilion
10x12

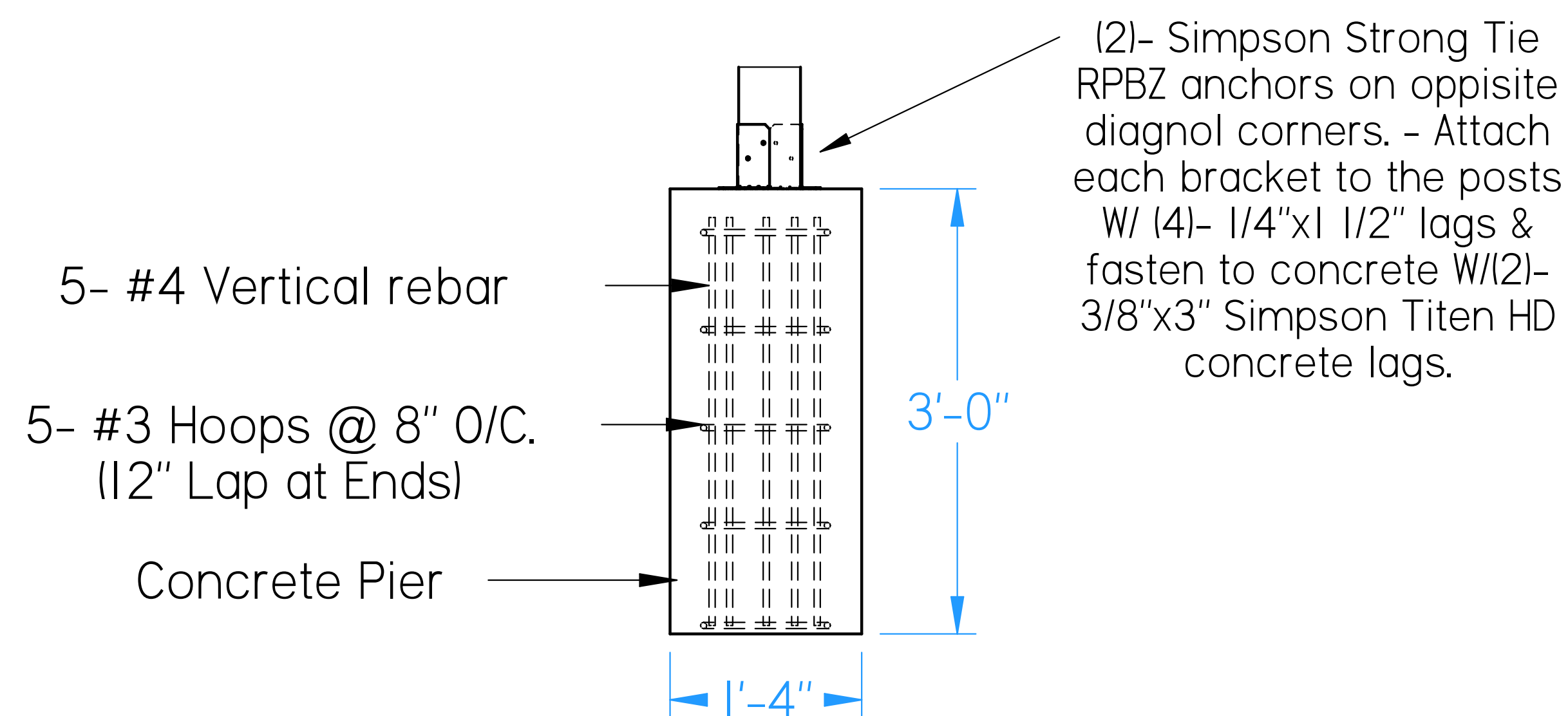
DRAWN BY: Wayne.B

DATE:8/8/2024

PROJECT:
Mesa Pavilion.dft



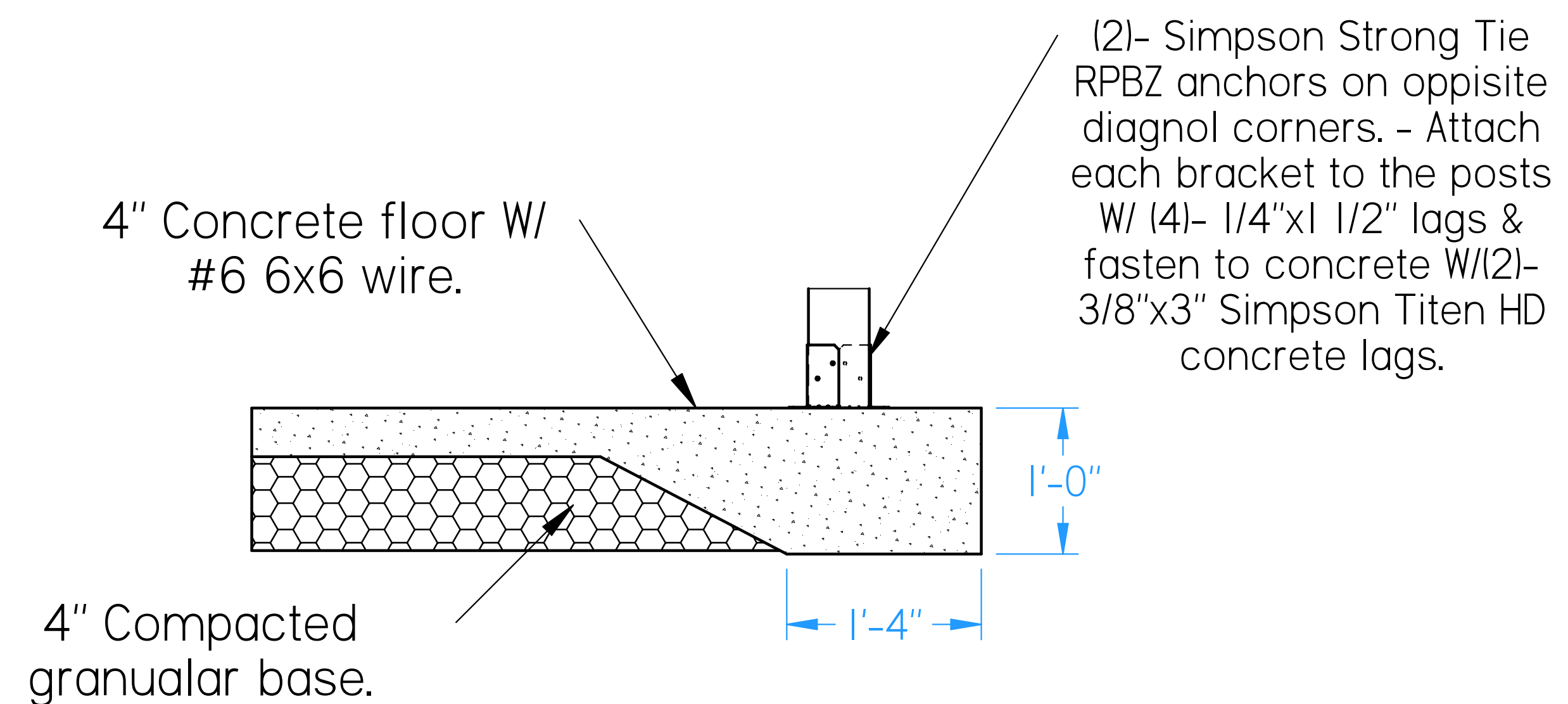
FOOTER LAYOUT



CONCRETE FOOTER DETAIL

FOUNDATION NOTES:

- Concrete - 4,000 psi W/ 5-7% Air Entertainment



CONCRETE SLAB DETAL