



"
Where: 13 S OVIATT ST
Type: Historic District
Number: 25-331











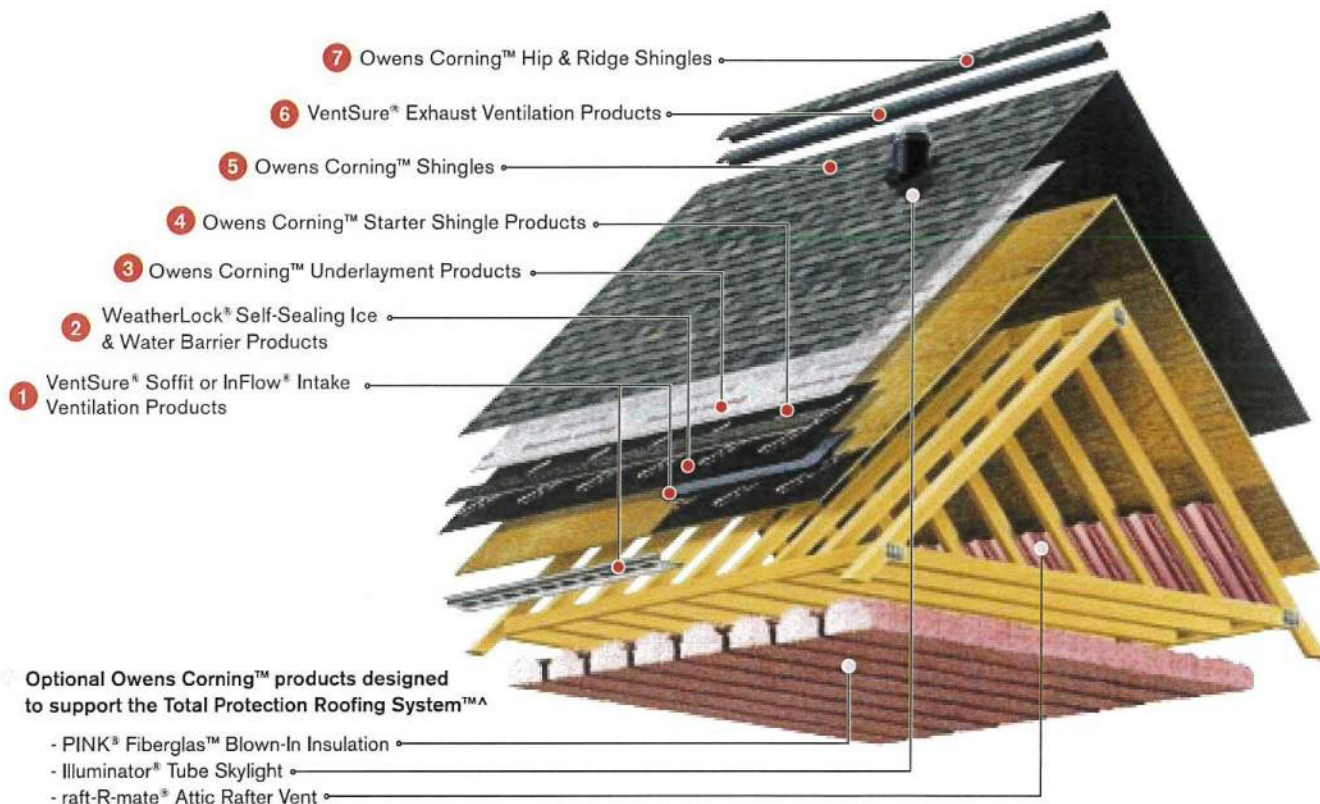


The Total Protection Roofing System™[^]

Working together to help protect and enhance your home.

It takes more than just shingles to protect your home. It takes an integrated system of components and layers designed to withstand the forces of nature outside while controlling temperature and humidity inside.

The Owens Corning™ Total Protection Roofing System™[^] gives you the assurance that all of your Owens Corning™ roofing components are working together to help increase the performance of your roof – and to enhance the comfort and enjoyment of those who live beneath it.



[^]Excludes non-Owens Corning™ roofing products such as flashing, fasteners and wood decking.



Help protect against heat and moisture buildup by creating a balanced flow of air through your attic.



Help protect vulnerable areas where water can do the most damage: eaves, valleys, dormers and skylights.



Help prevent damage from wind-driven rain by providing an additional layer of protection between the shingles and roof deck.



Enjoy clean lines and faster, easier installation by eliminating the need to cut shingle tabs.



Choose from a variety of durable styles and colors that provide the first line of defense against the elements.



Help protect your roof against premature failure by allowing heat and moisture to escape from the attic.



Help protect the ridge vent and add an attractive, finished look to your entire roof.



OWENS CORNING ROOFING AND ASPHALT, LLC
 ONE OWENS CORNING PARKWAY
 TOLEDO, OHIO, USA 43659
 1-800-GET-PINK®
www.owenscorning.com/roofing

Pub. No. 10013980-E. Printed in U.S.A. May 2014. THE PINK PANTHER™ & © 1964–2014 Metro-Goldwyn-Mayer Studios Inc. All Rights Reserved. The color PINK is a registered trademark of Owens Corning. © 2014 Owens Corning. All Rights Reserved.

(Brookville, Kearny, Medina, Minneapolis, Summit)



TruDefinition®

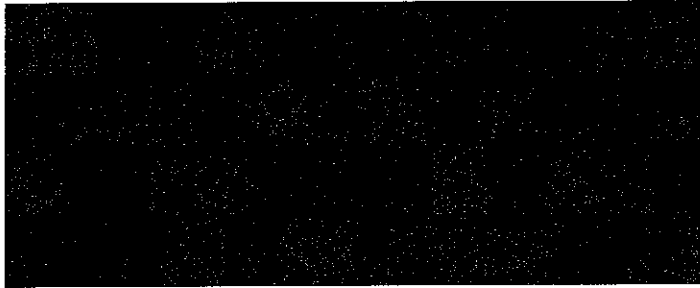
DURATION®

Shingles with Patented SureNail® Technology | Tejas con tecnología patentada SureNail®

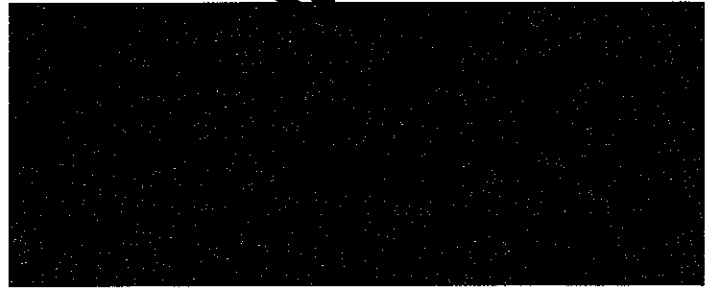
www.owenscorning.com

OWENS CORNING

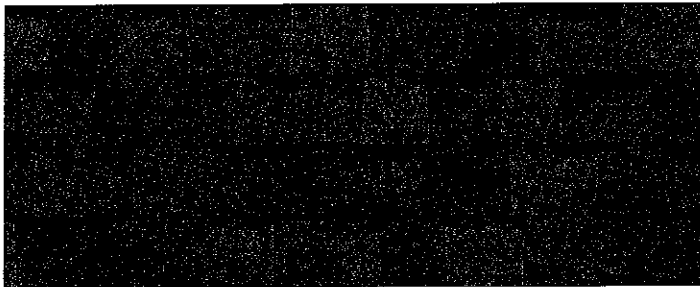
CHATEAU
green



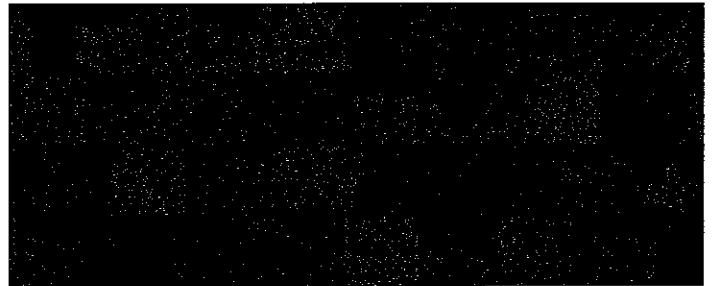
Brownwood¹



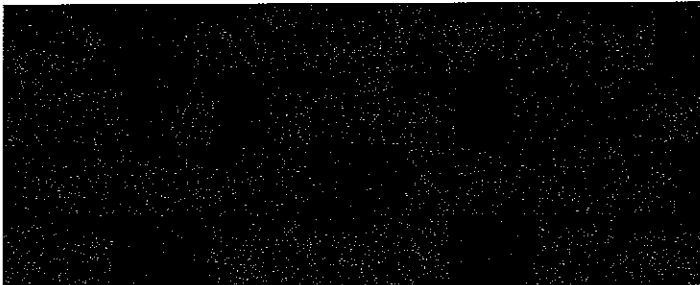
Chateau Green¹



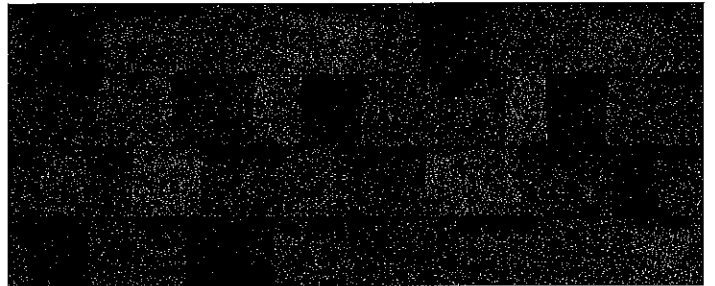
Colonial Slate¹



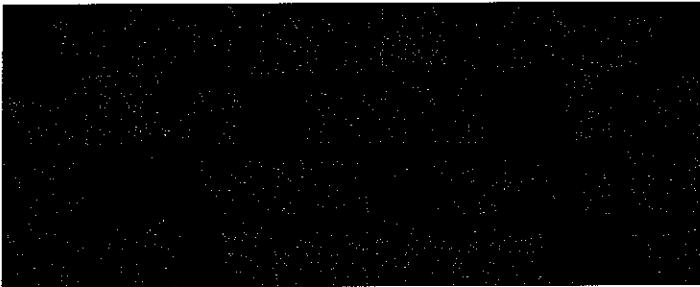
Desert Rose¹



Driftwood¹



Estate Gray¹



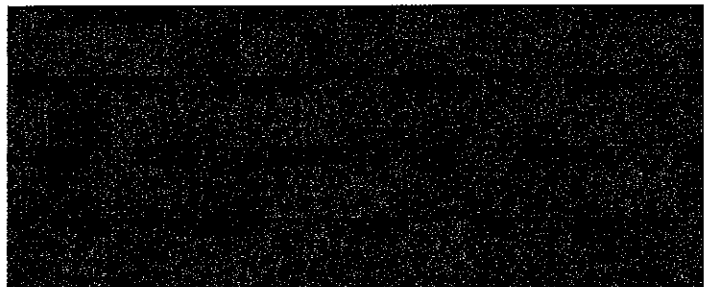
Midnight Plum^{1/5}



Onyx Black¹



Peppercorn¹



Sand Castle¹



Product Data Sheet

SA-SBS Cap Sheet

Revision Date: Feb 2024

PRODUCT DESCRIPTION

SA-SBS Cap Sheet is a premium self-adhering polyester reinforced modified bitumen membrane manufactured to meet the toughest industry and code requirements. SA-SBS Cap Sheet is manufactured using **Adeso®** dual-compound technology, whereby the membrane consists of a Styrene Butadiene Styrene (SBS) modified asphalt compound on top and a pressure sensitive adhesive compound on the bottom. The adhesive is covered with a split release liner. SA-SBS Cap Sheet is finished with granules on the top surface and features **SEALLap®** ULTRA side lap with self-adhesive compound for an instant bond, tested stronger than all other application methods and **FASTLap®**, granule free end lap. Each of these patented features provide for greater ease of application as well as improved long-term performance. SA-SBS Cap Sheet is also used as a flashing membrane in all applicable specifications. Meets ASTM D6164 Type 1, Grade G (granular) / ASTM D1970.



BASIC USES

SA-SBS Cap Sheet membrane is designed for applications where the use of hot asphalt, cold process adhesive, or a propane torch is undesirable. Applications include new roofing, recover (retrofit) and BUR repairs. This system must be installed over an acceptable base sheet, roof insulation, or other suitable substrate. See the Mule-Hide Self-Adhered Modified Bitumen Application Guidelines for complete specifications and details.

SPECIFICATIONS AND PACKAGING

Thickness	Approx. Weight	Roll Size	Rolls/Pallet	Coverage
3.5 mm (140)mils	84 lb./roll	32'10"x39 3/8" (10mx1m)	25	100 ft ²

Physical Property	Test Method	ASTM Values	Typical Performance
Peak Load at 0°F (-18°C)	ASTM D5147	70 lbf/in. (12.3) kN/m	138 lbf/in (24.2 kN/m) -MD 88 lbf/in (15.4 kN/m) -XMD
Elongation at Peak Load at 0°F (-18°C)	ASTM D5147	20%	52% MD, 64% XMD
Peak Load at 73°F (23°C)	ASTM D5147	50 lbf/in. (8.8) kN/m	80 lbf/in (14.0 kN/m) -MD 56 lbf/in (9.8 kN/m) -XMD
Elongation at Peak Load at 73°F (23°C)	ASTM D5147	35%	52% MD, 64% XMD
Ultimate Elongation at 73°F (23°C)	ASTM D5147	38%	84% MD, 93% XMD
Tear Strength at 73°F (23°C)	ASTM D5147	55 lbf (246) N	129 lbf (574 N)- MD 83 lbf (369 N) -XMD
Dimensional Stability (Maximum)	ASTM D1547	1%	0.3% MD, 0.6% XMD
Low Temperature Flexibility, max, F° (C°)	ASTM D5147	0°F (-18°C)	Pass
Compound Stability (maximum)	ASTM D5147	215°F (102°C)	Pass
Granule Embedment (maximum loss)	ASTM D5147	2g	1.5g
Adhesion to Plywood @ 40°F (4.4°C)	ASTM D1970	2.0 lbf/ft	4.7 lbf/ft
Adhesion to Plywood @ 75°F (24°C)	ASTM D1970	12.0 lbf/ft	31.0 lbf/ft
Colors Available	Black, Buff, Chestnut, Grey Slate, Oak, White, Red Blend, Pine Green, Heather Blend, Weatherwood		

Typical properties and characteristics are based on samples tested and are not guaranteed for all samples of this product. This data and information is intended as a guide and does not reflect the specification or specification range for any particular property of this product.

PRODUCT BENEFITS

1. Pre-applied adhesive on the back of the sheet.
2. Durable - high performance reinforcement mat.
3. No hot asphalt, fumes or flames required for installation.
4. Excellent long term adhesion to multiple substrates and to base plies.

SA-SBS Cap Sheet

5. Offers low-temp flexibility, puncture and tear resistance.
6. *FASTLAP* granule free end lap provides faster, stronger seams.
7. *SEALLap* Ultra granule free selvage edge now with self-adhesive compound for an immediate, long-term monolithic seam.

CODE APPROVALS

Various code approvals are available including: Factory Mutual, Underwriters Laboratories, Miami-Dade, Florida Product Approval, ICC-ESR and Texas Department of Insurance. Contact Mule-Hide Technical Department for specific ratings.

APPLICATION GUIDELINES

Apply SA-SBS Cap Sheet only in dry weather and when air and surface temperatures are 40°F (5°C) and rising.

- Apply over clean, dry, dust and debris-free substrates.
- Mule-Hide 121 Asphalt Primer or High-Tack Primer (water based) may be used where a primer is required. Contact Mule-Hide for appropriate uses and further information.
- All substrates shall be designed with proper expansion devices.
- Wood decks shall have all joints cross blocked and/or properly supported.
- Installation of SA-SBS Cap Sheet should not adversely affect the ventilation of existing construction.
- Do not apply directly to existing shingles, shakes or other unacceptable roof coverings.

INSTALLATION INSTRUCTIONS

SA-SBS Cap Sheet is intended to be used as a cap sheet or top layer in new or re-roofing applications, and is required to complete the roofing system.

1. Nail Base or an approved insulation shall be mechanically attached to a suitable substrate. SA-SBS Cap Sheet may be adhered directly to a suitable substrate.
2. Starting at the low point of the roof, unroll the SA-SBS Cap Sheet and allow it to relax.
3. After positioning the sheet, fold the top half of the sheet back lengthwise, remove the release liner and roll the material back into place, taking care to avoid wrinkles and trapped air, and maintaining proper sheet alignment.
4. Firmly hand press sheet from the center out avoiding wrinkles and trapped air as the SA-SBS Cap Sheet adheres to the Nail Base Sheet, SA-Base Sheet, or approved substrate.
5. When completing end laps stagger end laps approximately three feet apart. Cut the top corner of the top sheet on a 45-degree angle (start the cut 3" in from the top edge and finish down 3" from the top edge) and the bottom corner of the bottom sheet on a 45-degree angle (start the cut 3" in from the bottom edge and finish 3" up from the bottom edge). Apply a solid bead of Mod Bit Sealant along both cut edges. Remember to remove the release film from the *FASTLap* and *SEALLap* Ultra edges prior to adhering the lower half of the SA-SBS Cap Sheet.
6. Repeat procedure to adhere remaining half of the sheet.
7. After the sheet is adhered, it is required to be rolled with a 75 lb. roller, roll across the 3' width first, then the length of the roll can be rolled.
8. Position subsequent sheets to overlap the previous courses by the width of the selvage edge (overlap in a shingle fashion ensuring that laps are water shedding).

This is only a brief summary and NOT the complete specification. The Mule-Hide Self-Adhered Modified Bitumen Application Guidelines, Specifications, Details, Technical Bulletins, and associated documents should be thoroughly reviewed prior to starting any project.

PROTECTION & SAFETY

Mule-Hide maintains Safety Data Sheets on all of its non-exempt products. Safety Data Sheets contain health and safety information for your development of appropriate product handling procedures to protect your employees and customers. Mule-Hide's Safety Data Sheets should be read and understood by all of your supervisory personnel and employees before using Mule-Hide products in your facilities.



F/G Base Sheet

F/G Base Sheet is manufactured from tough inorganic fiberglass mat then coated on both sides with weathering grade coating asphalt and then covered on top with white sand fines to prevent sticking in the roll. Meets ASTM D 4601-04 Type II.

Applied over the flat roofing deck or insulation as a base sheet by mechanical fasteners or hot asphalt before the application of roofing systems. This sheet is suitable for use as a vapor retarder, with a solid mopping of asphaltic material, under roof insulation or between multiple layers of insulation.

System

ModBit

[Features](#) [Documents](#) [Options](#) [FAQs](#)

- Granular fines prevent sticking in the roll.
- Superior pliability and dimensional stability.
- Excellent resistance to punctures and tears.
- Wrinkle-resistant, ensuring it lays flat for easier installation.
- Consistent thickness of the oxidized asphalt blend coating on both sides provides enhanced weatherability.
- Meets or exceeds ASTM D4601-04 Type II (Standard Specification for Asphalt-Coated Glass Fiber Base Sheet Used in Roofing).



[Documents](#)

Documents

[Data Sheets](#)

TruDefinition® **DURATION®** SHINGLES

with SureNail® Technology

Bold contrast. Deep dimension. TruDefinition®

TruDefinition® Duration® Shingles are specially formulated to provide great contrast and dimension to any roof.

Through the use of multiple granule colors and shadowing, TruDefinition® Duration® Shingles offer a truly unique and dramatic effect. This exclusive combination of color and depth is what makes TruDefinition® Duration® Shingles like no other.

TruDefinition® Duration® Shingles are available in popular colors with bold, lively contrast and complementing shadow lines for greater dimension. They feature a Limited Lifetime Warranty*†† (for as long as you own your home), 130-MPH Wind Resistance Limited Warranty* and an Algae Resistance Limited Warranty.* Beyond the outstanding curb appeal and impressive warranty coverage, they also come with the advanced performance of patented SureNail® Technology.



The SureNail® Difference—
A technological breakthrough
in roofing. The innovative

features of Owens Corning™ TruDefinition® Duration® Shingles with patented SureNail® Technology offer the following:

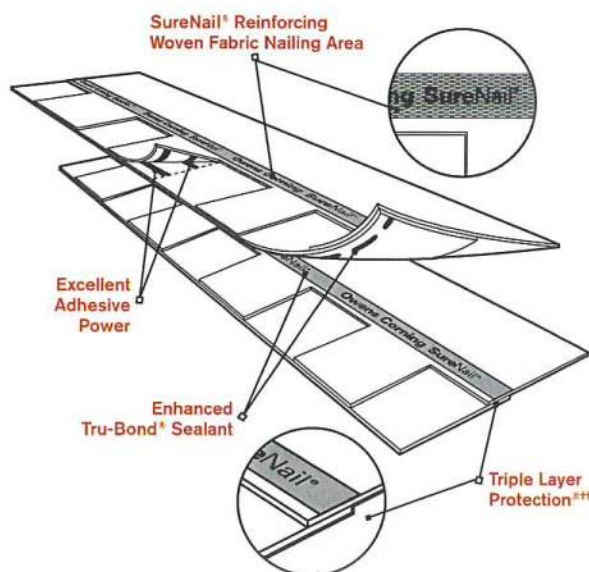
Breakthrough Design. Featuring a tough, woven engineered reinforcing fabric to deliver consistent fastening during installation.

Triple Layer Protection.* A unique “triple layer” of reinforcement occurs when the fabric overlays the common bond of the shingle laminate layers that offers excellent fastener holding power.

Superior Adhesion. Our enhanced Tru-Bond®†† sealant grips tightly to the engineered fabric nailing strip on the shingle below.

Excellent Adhesive Power. Specially formulated, wide adhesive bands help keep shingle layers laminated together.

Exceptional Wind Resistance. Engineered to deliver 130-MPH* wind warranty performance with only 4 nails. Fewer nails required can mean fewer deck penetrations.



ENERGY STAR® IS FOR ROOFS TOO



Similar to the energy-efficient appliances in your home, roofing products can provide energy-saving qualities. Owens Corning™ ENERGY STAR®-qualified shingles can help reduce your energy bills when installed properly. These shingles reflect solar energy, decreasing the amount of heat transferred to a home's interior — and the amount of air conditioning needed to keep it comfortable. Actual savings will vary based on geographic location and individual building characteristics. Call 1-800-GET-PINK® or 1-888-STAR-YES for more information.

Product Attributes

Warranty Length*

Limited Lifetime** (for as long as you own your home)

Wind Resistance Limited Warranty*

130 MPH

Algae Resistance Limited Warranty*

10 Years

TruPROtection® Non-Prorated Limited Warranty* Period

10 Years



TruDefinition® Duration® Shingles Product Specifications

Nominal Size	13 1/4" x 39 5/8"
Exposure	5 5/8"
Shingles per Square	64
Bundles per Square	3
Coverage per Square	98.4 sq. ft.

Applicable Standards and Codes

ASTM D228

ASTM D3018 (Type 1)

ASTM D3462

ASTM D3161 (Class F Wind Resistance)

ASTM D7158 (Class H Wind Resistance)

ASTM E108/UL 790 (Class A Fire Resistance)

ICC-ES AC438*

UL ER2453-01**

Shasta White color meets ENERGY STAR® requirements for initial solar reflectance of 0.25 and 3-year aged solar reflectance of 0.15; 2013 California Building Energy Efficiency Standards, Title 24, Part 6 requirements; rated by the Cool Roof Rating Council (CRRRC).

* See actual warranty for complete details, limitations and requirements.

** 2013 Roofing Homeowner Brand Awareness Study by Owens Corning Roofing and Asphalt, LLC.

† Owens Corning Roofing strives to accurately reproduce photographs of shingles. Due to manufacturing variances, the limitations of the printing process and the variations in natural lighting, actual shingle colors and granule blends may vary from the photo. The pitch of your roof can also impact how a shingle looks on your home. We suggest that you view a roofing display or several shingles to get a better idea of the actual color. To accurately judge your shingle and color choice, we recommend that you view it on an actual roof with a pitch similar to your own roof prior to making your final selection. Color availability subject to change without notice. Ask your professional roofing contractor for samples of colors available in your area.

†† This illustration depicts Triple Layer Protection® and the amount of Triple Layer Protection® may vary on a shingle-to-shingle basis.

‡ Tru-Bond® is a proprietary premium weathering-grade asphalt sealant that is blended by Owens Corning Roofing and Asphalt, LLC.

‡‡ 40-Year Limited Warranty on commercial projects.

Owens Corning™ Roofing Preferred Contractors are independent contractors and are neither affiliates nor agents of Owens Corning Roofing and Asphalt, LLC, or its affiliated companies.

SureNail® Technology U.S. Patent 7,836,654 and other patents pending.

ENERGY STAR and the ENERGY STAR mark are registered trademarks of the U.S. Environmental Protection Agency.

International Code Council Evaluation Services Acceptance Criteria for Alternative Asphalt Shingles.

Underwriters Laboratories Evaluation Service Evaluation Report.

^ Excludes non-Owens Corning™ roofing products such as flashing, fasteners and wood decking.