

September 15, 2025

Thomas J. Sheridan, City Manager  
City of Hudson Engineering Department  
1140 Terex Road  
Hudson, OH 44236

RE: Water Resources Survey —Oak Grove Park, Hudson, Summit County, Ohio

Dear Mr. Sheridan:

Davey Resource Group, Inc. “DRG” was authorized by the City of Hudson to perform a wetland delineation survey on the area surrounding a portion of the Oak Grove Park. Following is a discussion of the findings of those delineation services

#### Delineation Services

Judith Mitchell of DRG performed the delineation survey on August 25, 2025. The delineation was performed in accordance with methodology outlined in the 1987 U.S. Army Corps of Engineers Wetlands Delineation Manual and the Regional Supplement to the Corps of Engineers Wetland Delineation Manual: Northcentral and Northeast Region. Water resources that were identified were field marked with marker flagging and the location of each flag was mapped using a handheld GeoXH™ Trimble® GeoExplorer® with sub-meter accuracy. The GeoExplorer® collected data was post-processed using GPS data collected from an appropriate base station. This post-processed data was used with AutoCAD® software to prepare the water resources delineation map included in Attachment 1. A list of the water resources found on site is listed below in Table 1. Photographs of the wetlands are included in Attachment 2.

#### Wetlands Assessments

The Ohio Rapid Assessment Methodology (ORAM) as developed by Ohio EPA was used to evaluate the quality of each wetland within the study area. This evaluation method ranks wetlands into three different categories. Category 1 wetlands are of the lowest ecological quality. Category 2 wetlands are moderate to high quality but may still have some degraded features. Category 3 wetlands are of exceptional quality.

Table 1. Water Resources adjacent to Oak Grove Park

Wetlands	Cover Type	Area (Acres)	ORAM Score	ORAM Category
A	forested, scrub/shrub	0.155	52.5	2
B	forested, scrub/shrub	0.142	52.5	2
C	forested, scrub/shrub	0.082	42.5	modified 2
D	forested, scrub/shrub	0.009	42.5	modified 2
E	emergent	0.010	26.5	1
Total	-	0.398	-	-

Please let me know if you have any questions regarding this information. I can be contacted at 330-289-2691, or via email at [judith.mitchell@davey.com](mailto:judith.mitchell@davey.com).

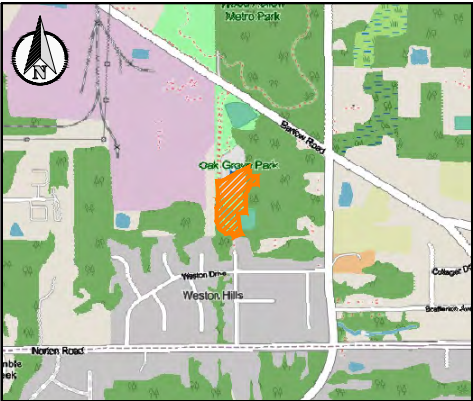
Sincerely,

A handwritten signature in black ink that reads "Judith Mitchell". The script is cursive and fluid, with the first letters of each name being capitalized and prominent.

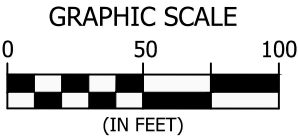
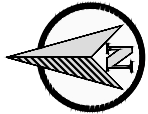
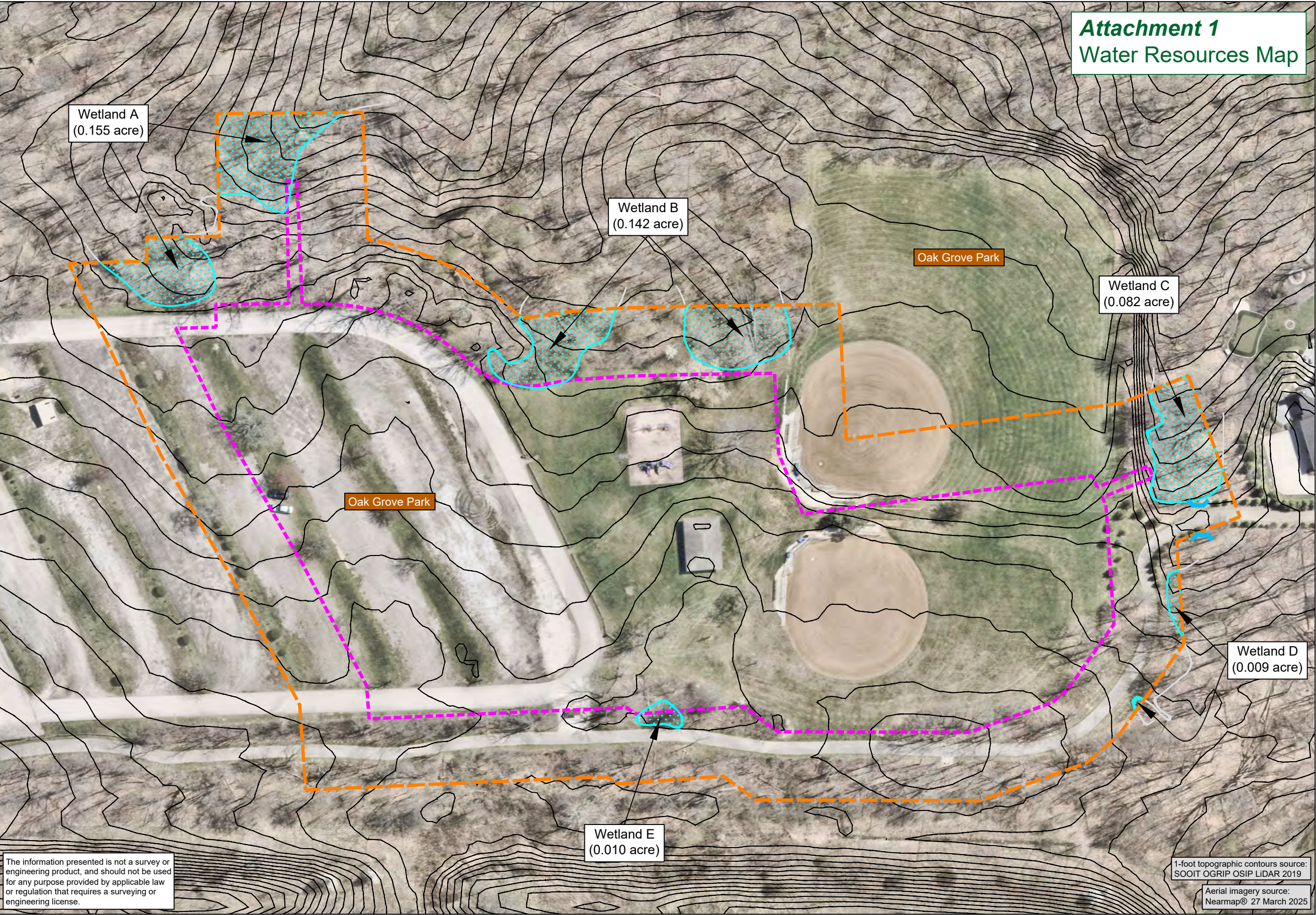
Judith Mitchell, Project Manager  
Ecological Services



# Attachment 1 Water Resources Map



**NOTE:** Wetlands sizes and stream lengths could change upon overlay of a boundary survey, especially where these features extend outside of or are in close proximity to the shown study limits. Wetlands acreage and stream lengths are calculated for the portion that occurs in the shown study limits.



- Approximate study area
- - - Proposed work boundary
- - - Existing 12-inch culvert(s)

= Area(s) of wetlands delineated within study area (0.398 acre)

PREPARED BY:  
**DAVEY**  
Resource Group

PREPARED FOR:  
**City of Hudson**

**Oak Grove Park**  
~5.8 Acres, 2200 Barlow Road  
Hudson, Summit County, Ohio

Data collected  
25 August 2025

Map  
Sheet **1**  
of 1



## Attachment 1 – Site Photographs



Photograph 1 (8-25-2025) Wetland A



Photograph 1 (8-25-2025) Wetland B





Photograph 3 (8-25-2025) Wetland C



Photograph 4 (8-25-2025) Wetland D





Photograph 5 (8-25-2025) Wetland E