

South elevation window to be replaced



South elevation window to be replaced











40 ROSLYN AVE
PHASE 2 2026

UNIT SUMMARY

The following is a schedule of the windows and doors for this project. For additional unit details, please see Line Item Quotes.

Additional charges, tax or Terms and Conditions may apply. Detail pricing is per unit.

NUMBER OF LINES: 3

TOTAL UNIT QTY: 3

EXT NET PRICE: USD 5,712.23

| LINE | MARK UNIT | PRODUCT LINE | ITEM | NET PRICE | QTY | EXTENDED NET PRICE |
|------|-----------|--------------|------------------|-----------|-----|--------------------|
| 1 | | Elevate | Elevate Assembly | 2,524.78 | 1 | 2,524.78 |
| 2 | | Elevate | Elevate Assembly | 2,302.69 | 1 | 2,302.69 |
| 3 | | Elevate | Double Hung | 884.76 | 1 | 884.76 |

PRODUCT AND PERFORMANCE INFORMATION

NFRC Ratings:

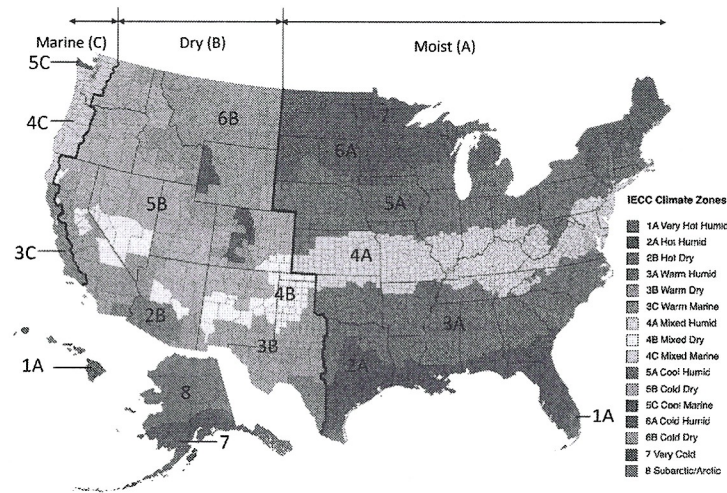
NFRC energy ratings may vary depending on the exact configuration of glass thickness used on the unit. NFRC energy values and ratings may change over time due to ongoing product changes, updated test results or requirements. NFRC values and ratings are finalized on the date of manufacture.

The National Fenestration Rating Council (NFRC) has developed and operates a uniform rating system for the energy performance of fenestration products, including windows, doors and skylights. For additional information regarding this rating system, see www.nfrc.org.

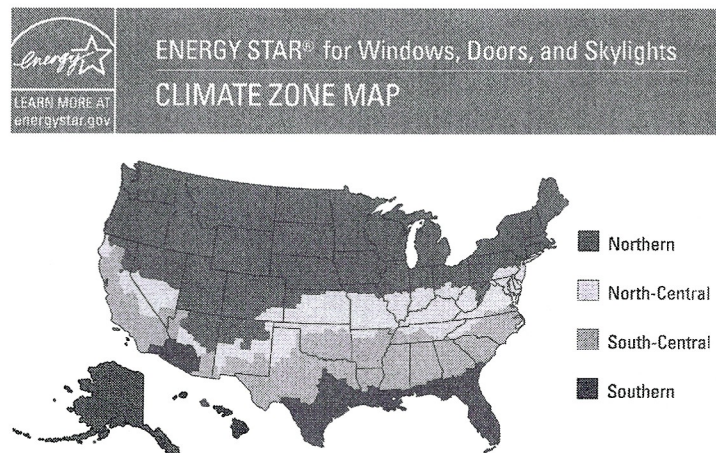
Code (residential, building or energy) Compliance:

Determining the suitability and compliance with state, provincial, local, or other applicable building codes or standards, including energy codes, is the responsibility of the buyer, user, architect, contractor, installer, and/or other construction professional.

2021 IECC Climate Zone Map:



ENERGY STAR Version 7 Climate Zone Map:

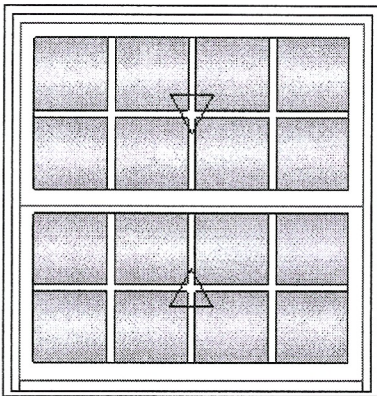


1 White Sash Lock
 Exterior Aluminum Screen 27.87
 Stone White Surround
 Bright View Mesh
 4 9/16" Jamb
 Nailing Fin w/ Certification Brackets 107.90
 ***Note: Divided lite cut alignment may not be accurately represented in the
 OMS drawing. Please consult your local representative for exact specifications.
 ***Note: This configuration is certified to AAMA 450.
 ***Note: Unit Availability and Price is Subject to Change

Initials required
 Seller: _____
 Buyer: _____

2ND STORY SOUTH

| | | | |
|---------|------------|-----------------|--------|
| Line #3 | Mark Unit: | Net Price: | 884.76 |
| Qty: 1 | | Ext. Net Price: | 884.76 |
| | | USD | |



As Viewed From The Exterior

Egress Information
 Width: 32 3/8" Height: 12 31/32"
 Net Clear Opening: 2.92 SqFt

36" W x 48" H
APPROX
OVERALL

Stone White Exterior
 White Interior 96.21
 Elevate Double Hung 568.26
 Top Sash
 Stone White Exterior
 White Interior
 IG
 Low E2 w/Argon
 Silver Stainless Steel Perimeter Bar
 GBG 96.21
 Rectangular - Special Cut 4W2H
 Stone White Ext - White Int
 Bottom Sash
 Stone White Exterior
 White Interior
 IG
 Low E2 w/Argon
 Silver Stainless Steel Perimeter Bar
 GBG 96.21
 Rectangular - Special Cut 4W2H
 Stone White Ext - White Int
 White Weather Strip Package
 1 White Sash Lock
 Exterior Aluminum Screen 27.87
 Stone White Surround
 Bright View Mesh
 4 9/16" Jamb
 Nailing Fin
 ***Note: Divided lite cut alignment may not be accurately represented in the
 OMS drawing. Please consult your local representative for exact specifications.
 ***Note: Unit Availability and Price is Subject to Change

Initials required
 Seller: _____
 Buyer: _____

Project Subtotal Net Price: USD 5,712.23
 0.000% Sales Tax: USD 0.00
 Project Total Net Price: USD 5,712.23

***Note: Divided lite cut alignment may not be accurately represented in the OMS drawing. Please consult your local representative for exact specifications.
 ***Note: This configuration is certified to AAMA 450.
 ***Note: Unit Availability and Price is Subject to Change

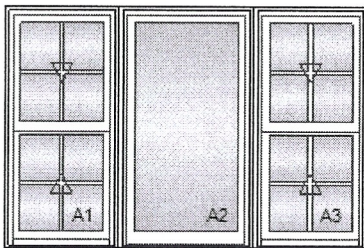
Initials required

Seller: _____

Buyer: _____

NORTH UNDER PERGOLA

| | | | | |
|---------|------------|-----------------|-----|----------|
| Line #2 | Mark Unit: | Net Price: | | 2,302.69 |
| Qty: 1 | | Ext. Net Price: | USD | 2,302.69 |



As Viewed From The Exterior

Egress Information A1, A3
 Width: 18 3/8" Height: 16 31/32"
 Net Clear Opening: 2.17 SqFt
Egress Information A2
 No Egress Information available.

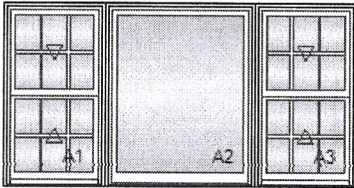
44" x 72" W APPROX OVERALL

- Feature Mismatch: Divided Lite Options
- Stone White Exterior
- White Interior..... 288.62
- 3W1H - Rectangle Assembly
- Elevate Double Hung..... 516.11
 - Top Sash
 - Stone White Exterior
 - White Interior
 - IG
 - Low E2 w/Argon
 - Silver Stainless Steel Perimeter Bar
 - GBG..... 48.55
 - Rectangular - Standard Cut 2W2H
 - Stone White Ext - White Int
 - Bottom Sash
 - Stone White Exterior
 - White Interior
 - IG
 - Low E2 w/Argon
 - Silver Stainless Steel Perimeter Bar
 - GBG..... 48.55
 - Rectangular - Standard Cut 2W2H
 - Stone White Ext - White Int
 - White Weather Strip Package
 - 1 White Sash Lock
 - Exterior Aluminum Screen..... 27.87
 - Stone White Surround
 - Bright View Mesh
- Elevate Double Hung Picture..... 624.01
 - Stone White Exterior
 - White Interior
 - IG - 1 Lite
 - Low E2 w/Argon
 - Silver Stainless Steel Perimeter Bar
- Elevate Double Hung..... 516.11
 - Top Sash
 - Stone White Exterior
 - White Interior
 - IG
 - Low E2 w/Argon
 - Silver Stainless Steel Perimeter Bar
 - GBG..... 48.55
 - Rectangular - Standard Cut 2W2H
 - Stone White Ext - White Int
 - Bottom Sash
 - Stone White Exterior
 - White Interior
 - IG
 - Low E2 w/Argon
 - Silver Stainless Steel Perimeter Bar
 - GBG..... 48.55
 - Rectangular - Standard Cut 2W2H
 - Stone White Ext - White Int
 - White Weather Strip Package

LINE ITEM QUOTES

The following is a schedule of the windows and doors for this project. For additional unit details, please see Line Item Quotes. Additional charges, tax or Terms and Conditions may apply. Detail pricing is per unit.

| | | | | |
|---------|------------|-----------------|-----|----------|
| Line #1 | Mark Unit: | Net Price: | | 2,524.78 |
| Qty: 1 | | Ext. Net Price: | USD | 2,524.78 |



As Viewed From The Exterior

Egress Information A1, A3
 Width: 22 3/8" Height: 16 31/32"
 Net Clear Opening: 2.64 SqFt
Egress Information A2
 No Egress Information available.

*44" x 90" W APPROX
 OVERALL*

SOUTH FIRST FLOOR

OF ORIGINAL HOUSE

Feature Mismatch: Divided Lite Options

| | |
|---------------------------------------|--------|
| Stone White Exterior | |
| White Interior | 288.62 |
| 3W1H - Rectangle Assembly | |
| Elevate Double Hung | 536.79 |
| Top Sash | |
| Stone White Exterior | |
| White Interior | |
| IG | |
| Low E2 w/Argon | |
| Silver Stainless Steel Perimeter Bar | |
| GBG | 71.93 |
| Rectangular - Standard Cut 3W2H | |
| Stone White Ext - White Int | |
| Bottom Sash | |
| Stone White Exterior | |
| White Interior | |
| IG | |
| Low E2 w/Argon | |
| Silver Stainless Steel Perimeter Bar | |
| GBG | 71.93 |
| Rectangular - Standard Cut 3W2H | |
| Stone White Ext - White Int | |
| White Weather Strip Package | |
| 1 White Sash Lock | |
| Exterior Aluminum Screen | 27.87 |
| Stone White Surround | |
| Bright View Mesh | |
| Elevate Double Hung Picture | 711.22 |
| Stone White Exterior | |
| White Interior | |
| IG - 1 Lite | |
| Low E2 w/Argon | |
| Silver Stainless Steel Perimeter Bar | |
| Elevate Double Hung | 536.79 |
| Top Sash | |
| Stone White Exterior | |
| White Interior | |
| IG | |
| Low E2 w/Argon | |
| Silver Stainless Steel Perimeter Bar | |
| GBG | 71.93 |
| Rectangular - Standard Cut 3W2H | |
| Stone White Ext - White Int | |
| Bottom Sash | |
| Stone White Exterior | |
| White Interior | |
| IG | |
| Low E2 w/Argon | |
| Silver Stainless Steel Perimeter Bar | |
| GBG | 71.93 |
| Rectangular - Standard Cut 3W2H | |
| Stone White Ext - White Int | |
| White Weather Strip Package | |
| 1 White Sash Lock | |
| Exterior Aluminum Screen | 27.87 |
| Stone White Surround | |
| Bright View Mesh | |
| 4 9/16" Jambs | |
| Nailing Fin w/ Certification Brackets | 107.90 |



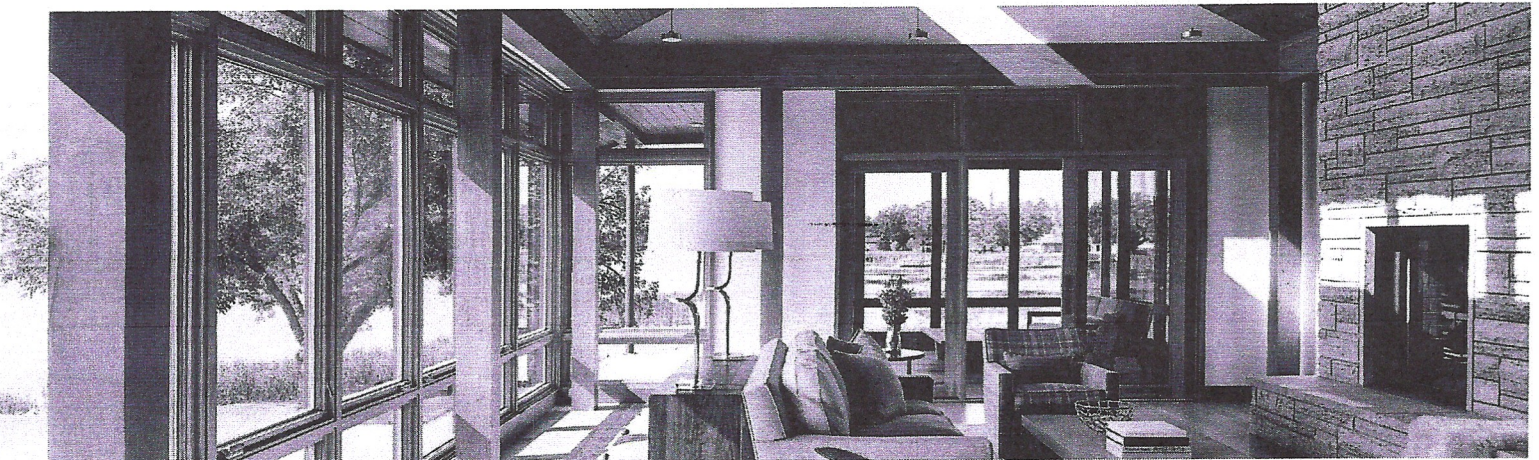
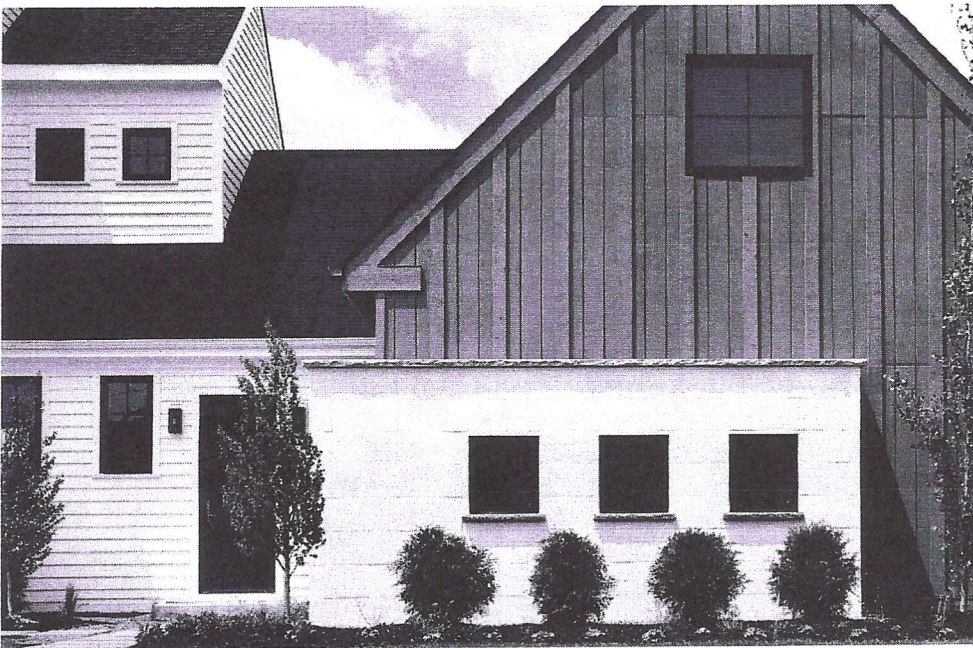
WINDOW AND DOOR LIMITED WARRANTY

This Limited Warranty applies to Marvin Signature™, Marvin Elevate™, and Marvin Essential™ windows and exterior doors purchased on or after the Effective Date from an authorized Marvin dealer, and installed in the U.S.A. or Canada. This Limited Warranty extends to the owner of the structure in which the products are originally installed and is fully transferable.

SIGNATURE COLLECTION

ELEVATE COLLECTION

ESSENTIAL COLLECTION



GLASS COMPONENTS

Glass warranties apply to factory-installed glass or Marvin-supplied glass installed by Marvin-authorized service personnel. Standard insulating glass with stainless steel spacers is warranted against seal failure caused by manufacturing defects and resulting in visible obstruction through the glass for twenty (20) years in sizes up to sixty (60) square feet, and for ten (10) years in sizes sixty (60) square feet and larger. Non-tempered glass is warranted against stress cracks caused by manufacturing defects for ten (10) years. All other glass and glass features are provided with the same warranties, limitations, and exclusions Marvin receives from its supplier; contact Marvin for further details.

NON-GLASS COMPONENTS

Hardware and other non-glass components are warranted to be free from manufacturing defects for ten (10) years. Stainless steel hardware and hardware with PVD finishes installed in coastal environments are warranted to be free from manufacturing defects that result in abnormal deterioration of the finish for a period of ten (10) years. Other hardware finishes are not warranted in coastal environments. Electric operators and other motorized accessories are provided with the same warranties, limitations, and exclusions Marvin receives from its supplier; contact Marvin for further details.

EXTERIOR CLADDING FINISH

Except as described below, Marvin's standard exterior aluminum cladding finish is warranted against manufacturing defects resulting in chalk, fade, and loss of adhesion (peel), per the American Architectural Manufacturer's Association's (AAMA) Specification 2605-11 Sections 8.4 and 8.9, for twenty (20) years. Anodized finishes and other specialty exterior finishes are warranted to be free from manufacturing defects for five (5) years.

Standard exterior aluminum cladding finish installed in coastal environments (within one (1) mile of a sea coast or other salt water source) is warranted against manufacturing defects resulting in abnormal deterioration caused by corrosion and/or loss of adhesion for ten (10) years. "Abnormal deterioration" means damage to the finish (such as peeling, flaking, or blistering) beyond what is normal for an ocean coastline environment. Anodized or other specialty finishes are not warranted in coastal environments.

Marvin's standard exterior composite cladding finish is warranted against manufacturing defects per AAMA 625-10, Section 5 for ten (10) years.

INTERIOR FINISH

Factory-applied interior wood finish is warranted to be free from Finish Defects for a period of five (5) years. Finish Defects include cracking, peeling, checking, delamination, blistering, flaking, excessive chalking and, in the case of painted interior finish, fading or change in color (per ASTM D2244), under normal interior environmental conditions. The color of wood changes, typically darkening over time, and is not a defect. The application of stains and/or clear finish does not prevent this natural process. Color change may be more noticeable in woods treated with a clear coat or light colored stain. The appearance of a raised grain or other natural variation in the wood grain may be enhanced by the interior finish and is not a defect. Interior finish is applied prior to assembly and is not intended to cover joinery seams. Factory-applied primer-only is not covered. Factory-applied wood primer must be painted in accordance with Marvin's finishing instructions within ninety (90) days of installation.

Factory applied interior aluminum finish is warranted against manufacturing defects per AAMA 2605-11, Sections 8.4 and 8.9 for twenty (20) years. Anodized interior aluminum finish is warranted to be free from manufacturing defects for five (5) years.

OBSOLETE OR DISCONTINUED PARTS

Parts designated at the time of sale by Marvin as obsolete or discontinued are warranted against manufacturing defects for a period of one (1) year.

EXCLUSIVE REMEDY

This Limited Warranty is made as of the original date of product purchase and is not a warranty of future performance. Warranty notice periods begin on the original date of purchase. If a covered defect is reported during the term of the applicable warranty notice period, and otherwise in accordance with the terms of the Limited Warranty, Marvin will, at its option, repair or replace the product or component, or refund the price paid for the defective product or component. Removal, installation, finishing, refinishing, and disposal costs and services are not included. Marvin will endeavor to supply original replacement

