

KEY:

- = Concept Sublots
- = Future Right of Way for Hines Hill Rd. Overpass
- = Existing Right of Way
- = Building Setbacks
- = Wetland Setbacks
- = Brandywine Creek
- = Existing Parcels
- = Full Parcel Approx. 91.7 Acres
- = Proposed Lots
- = Riparian Setbacks
- = Flood Plains
- = Wetlands
- = Conservation Area
- SF = Sample Bldg. Footprints (for example only)

DEVELOPMENT SUMMARY

Zoning: District 6

Permitted Uses: Office, showroom/salesroom for distribution, wholesale trade, light industrial, research laboratories, warehouse, day care, medical clinic, hospital

Min. Lot Size: 2 Acres

Min. Setbacks: Front - 50', Side & Rear - 25'

Parking: 25% permitted in front with remainder to side or rear

Storm Water Management: Proposed shared storm water basin per City of Hudson standards

Sanitary: Summit County Dept of Sanitary Sewer

Electric: Hudson Public Power

Water: City of Cleveland

Fiber Internet Service: Hudson Velocity Broadband

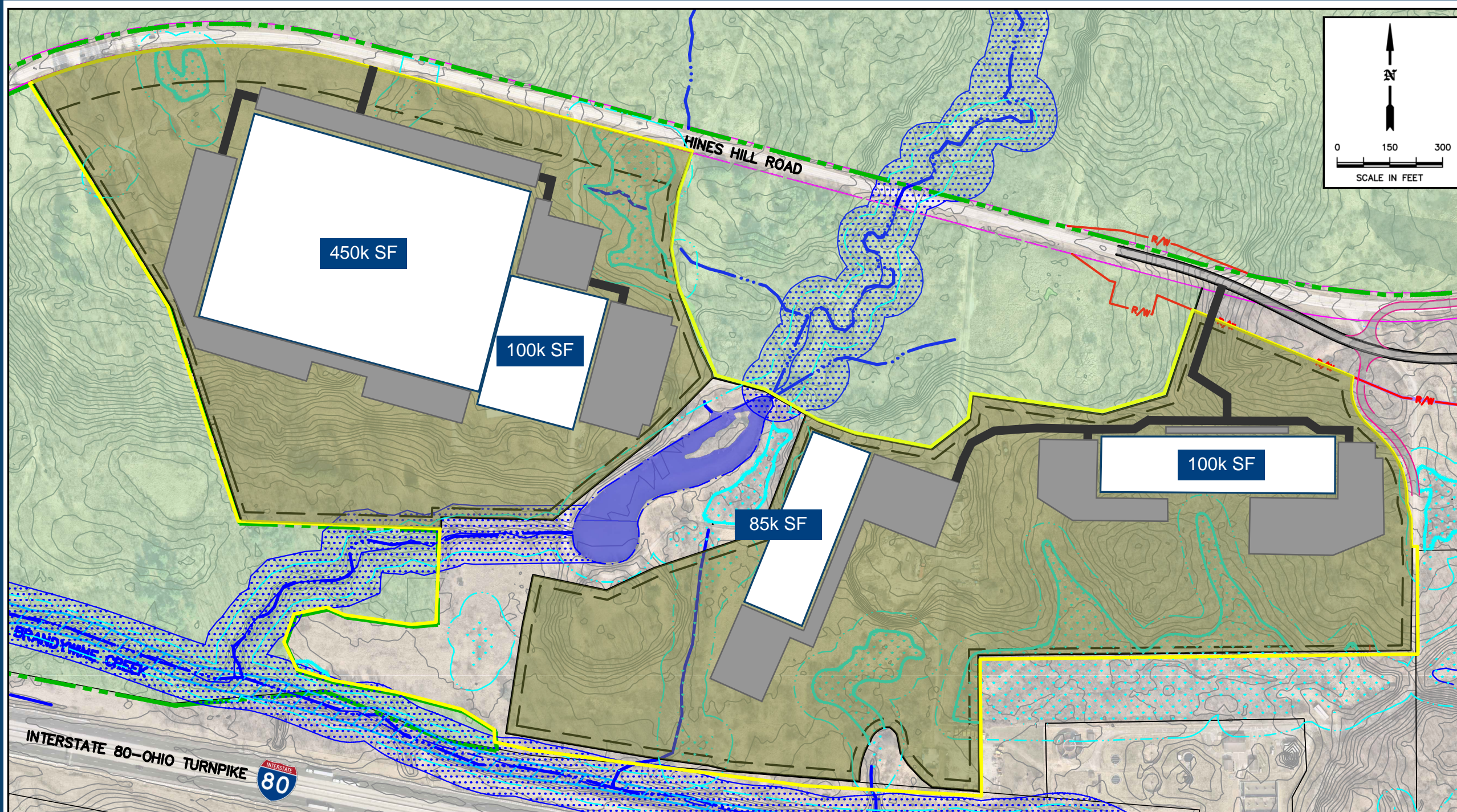
Assumptions
 Actual parking requirements vary by use. The depicted buildings assume one approximately (1) parking space per 500 Sq Ft based on existing office and light industrial businesses in the City of Hudson. Additional pavement is depicted on some properties to represent the potential for loading docks. Buildings are assumed as 1 story, however, multiple configurations are possible within the 50' maximum height allowance.



Hudson Innovation Park

Sample Site Plan: Option A (7 Lots)

Disclaimer: The site plan depicted above is for sample purposes only and does not provide any guarantee of zoning approvals. All data on this map were created for the City of Hudson to assist City departments in planning and management activities. The suitability of this map for any other use is not guaranteed and the user assumes all risk for such uses. The City of Hudson, Ohio assumes no legal responsibility for the information on this map.



KEY:

- = Concept Sublots
- = Future Right of Way for Hines Hill Rd. Overpass
- = Existing Right of Way
- = Building Setbacks
- = Wetland Setbacks
- = Brandywine Creek
- = Existing Parcels
- = Full Parcel Approx. 91.7 Acres
- = Proposed Lots
- = Riparian Setbacks
- = Flood Plains
- = Wetlands
- = Conservation Area
- SF = Sample Bldg. Footprints (for example only)

DEVELOPMENT SUMMARY

Zoning: District 6

Permitted Uses: Office, showroom/salesroom for distribution, wholesale trade, light industrial, research laboratories, warehouse, day care, medical clinic, hospital

Min. Lot Size: 2 Acres

Min. Setbacks: Front - 50', Side & Rear - 25'

Parking: 25% permitted in front with remainder to side or rear

Storm Water Management: Proposed shared storm water basin per City of Hudson standards

Sanitary: Summit County Dept of Sanitary Sewer

Electric: Hudson Public Power

Water: City of Cleveland

Fiber Internet Service: Hudson Velocity Broadband

Assumptions
 Actual parking requirements vary by use. The depicted buildings assume one approximately (1) parking space per 500 Sq Ft based on existing office and light industrial businesses in the City of Hudson. Additional pavement is depicted on some properties to represent the potential for loading docks. Buildings are assumed as 1 story, however, multiple configurations are possible within the 50' maximum height allowance.



Hudson Innovation Park

Sample Site Plan: Option B (2 Lots)

Disclaimer: The site plan depicted above is for sample purposes only and does not provide any guarantee of zoning approvals. All data on this map were created for the City of Hudson to assist City departments in planning and management activities. The suitability of this map for any other use is not guaranteed and the user assumes all risk for such uses. The City of Hudson, Ohio assumes no legal responsibility for the information on this map.