

OVER ALL 1040'-4"

OVER ALL 1245'-3 11/16"

PARCEL NUMBER  
3000724

Address  
Joanne Poulton  
5457 Stow Rd.  
Hudson, Ohio 44236

644'-9 13/16"

1109'-3 3/4"

NEW SCREENED  
ROOM  
14' X 16'

120'-0 3/4"

1000 gal. tank

inspection box

ROOF OVER EXISTING STOOP  
5' X 8'

173'-4"

STOW ROAD



Elevation 1



Elevation 3

JOB #  
25 -1922

REVISION TABLE			
NUMBER	DATE	REVISION BY	DESCRIPTION

3 Season room over a deck  
Roof over existing front porch  
New front door, new door for garage  
and new garage doors

Joanne & Dr. Tom Poulton  
5451 Stow Road  
Hudson, Ohio 44236

DRAWINGS PROVIDED BY:  
1743 Whipple Ave. NW  
Canton, Ohio 44705  
330-419-3614  
**MAYKIS**  
ARCHITECTURE

DATE:  
8/22/2025

SCALE:  
1/4" = 1'

SHEET:  
P 2



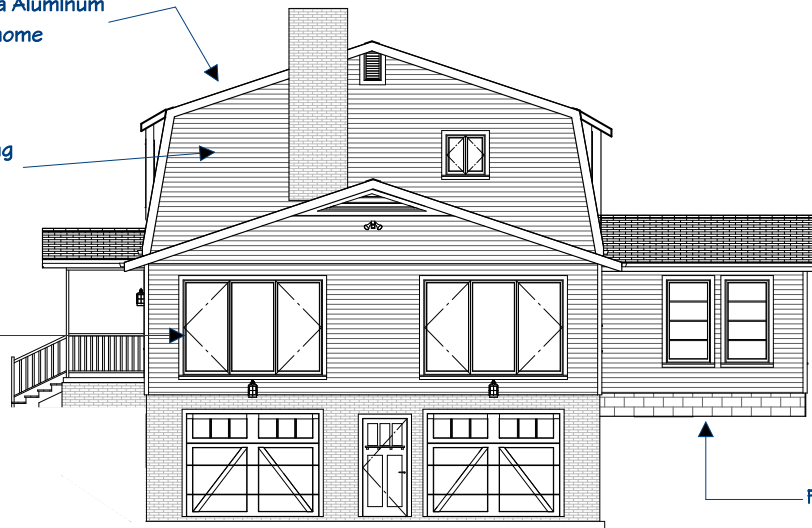
Elevation 2

All railing and hand rails  
to be fabricated metal

Fascia and soffit to be Alcoa Aluminum  
on all 4 sides of the home

James Hardie 7" exposed Plank Siding  
on all 4 sides of the home

James Hardie 3 1/3" trim around  
all windows and doors  
on all 4 sides of the home



Elevation 4

Faux block skirt wall

JOB #  
25 -1922

REVISION TABLE	NUMBER	DATE	REVISION BY	DESCRIPTION

3 Season room over a deck  
Roof over existing front porch  
New front door, new door for garage  
and new garage doors

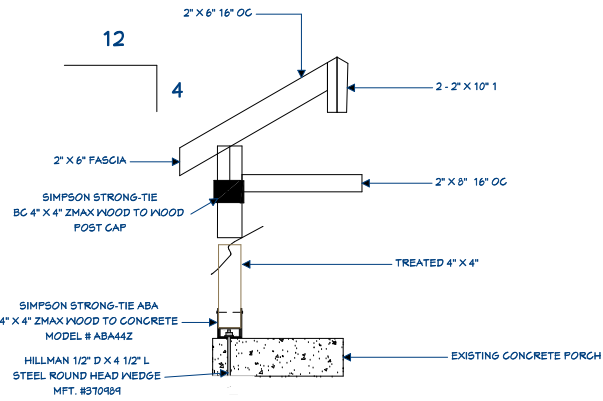
Joanne & Dr. Tom Poulton  
5457 Stow Road  
Hudson, Ohio 44236

DRAWINGS PROVIDED BY:  
1743 Whipple Ave. NW  
Canton, Ohio 44705  
330-419-3614  
**MAYAKIS**  
ARCHITECTURE

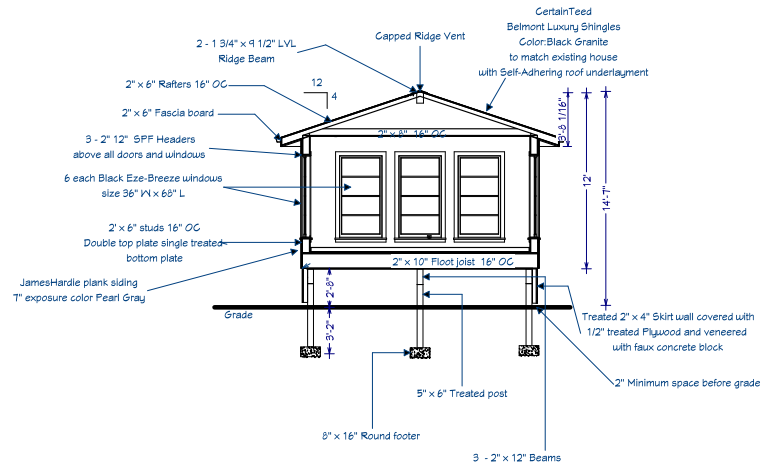
DATE:  
8/22/2025

SCALE:  
1/4" = 1'

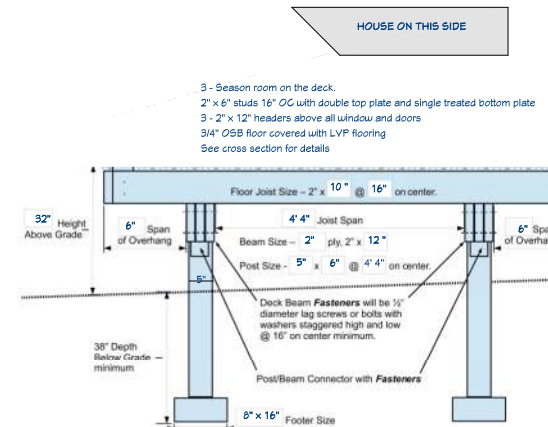
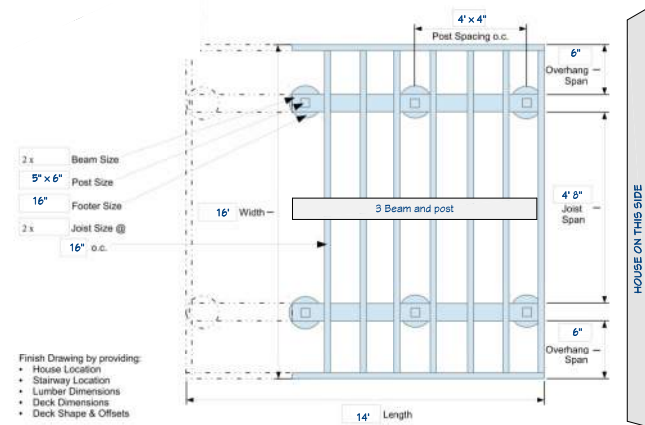
SHEET:  
P 3



**TYPICAL CROSS SECTION  
OF FRONT PORCH  
NO SCALE**



**CROSS SECTION OF THE  
3 SEASON ROOM  
UNCONDITIONED**



**JOB #  
25 - 1922**

REVISION TABLE	NUMBER	DATE	REVISION BY	DESCRIPTION

3 Season room over a deck  
Roof over existing front porch  
New front door, new door for garage  
and new garage doors

**Joanne & Dr. Tom Poulton**  
5457 Stow Road  
Hudson, Ohio 44236

DRAWINGS PROVIDED BY:  
1743 Millie Ave. NW  
Canton, Ohio 44705  
330-419-3614  
**MAYNARD**  
ARCHITECTS

**DATE:**

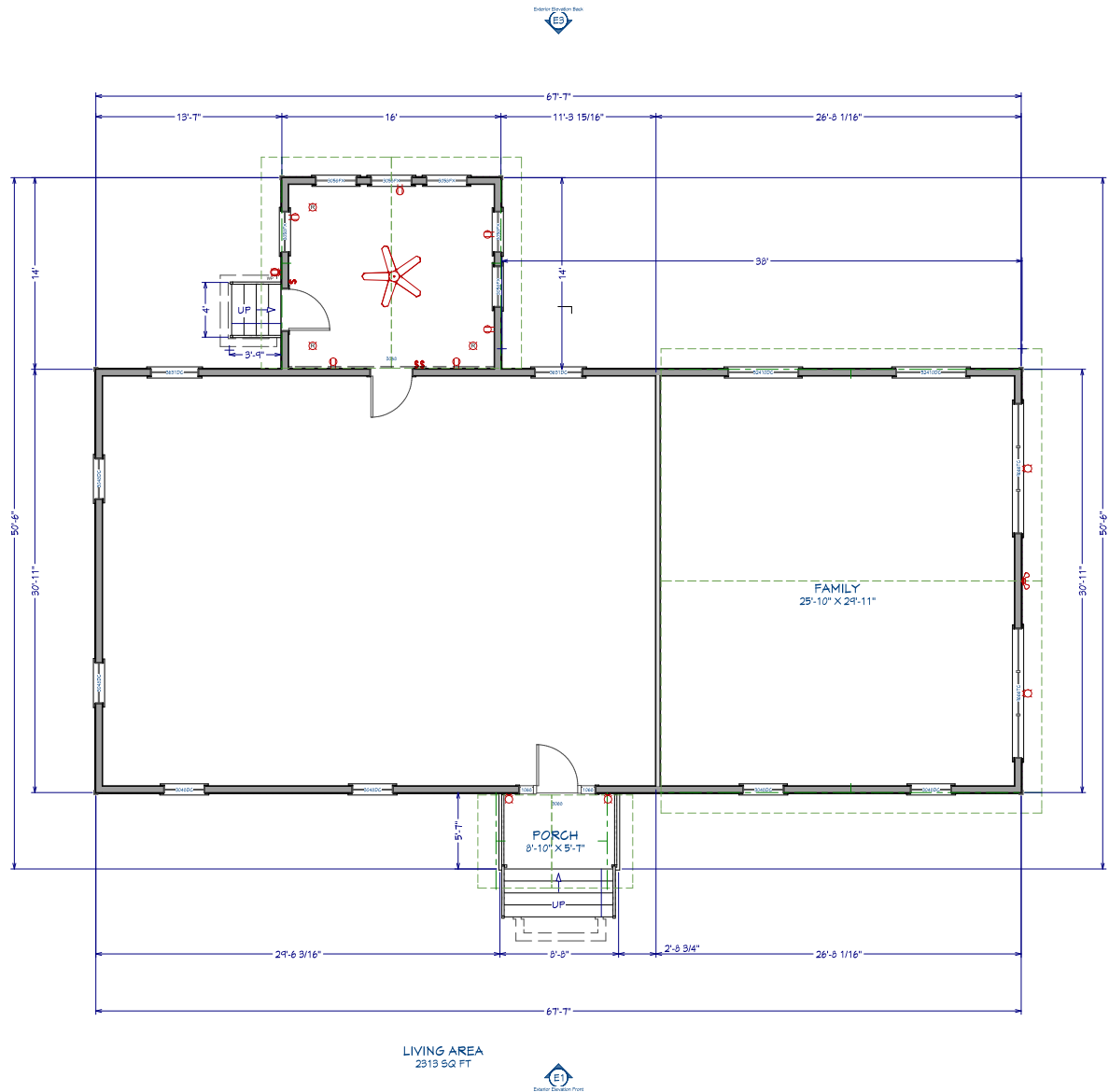
8/22/2025

**SCALE:**

1/4" = 1'

**SHEET:**

P 4



**JOB #**  
25-1922

NUMBER	DATE	REVISION BY	DESCRIPTION

3 Season room over a deck  
Roof over existing front porch  
New front door, new door for garage  
and new garage doors

**Joanne & Dr. Tom Poulton**  
5457 Stow Road  
Hudson, Ohio 44236

**DRAWINGS PROVIDED BY:**  
1743 Whipple Ave. NW  
Canton, Ohio 44705  
330-419-3614  
**MATTHEWS**  
ARCHITECTURE

**DATE:**  
8/22/2025

**SCALE:**  
1/4" = 1'

**SHEET:**  
P-1















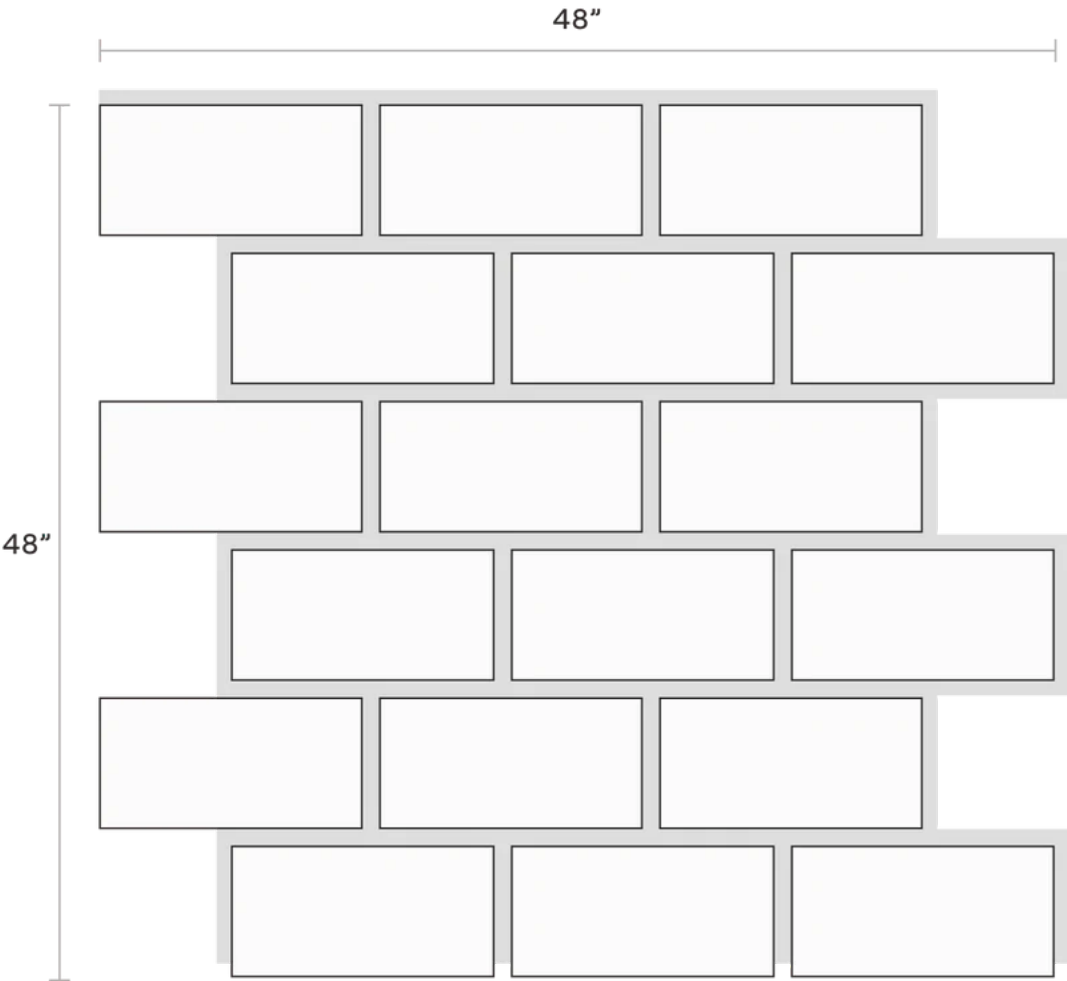


Receive a \$50 credit with [sample purchase\\*](#)



Sizing It Up

Panel size: 48" x 48". Thickness: 1"  
Square feet per panel: 16  
Each "block" is 7.5" W x 5.5" H



Reviews



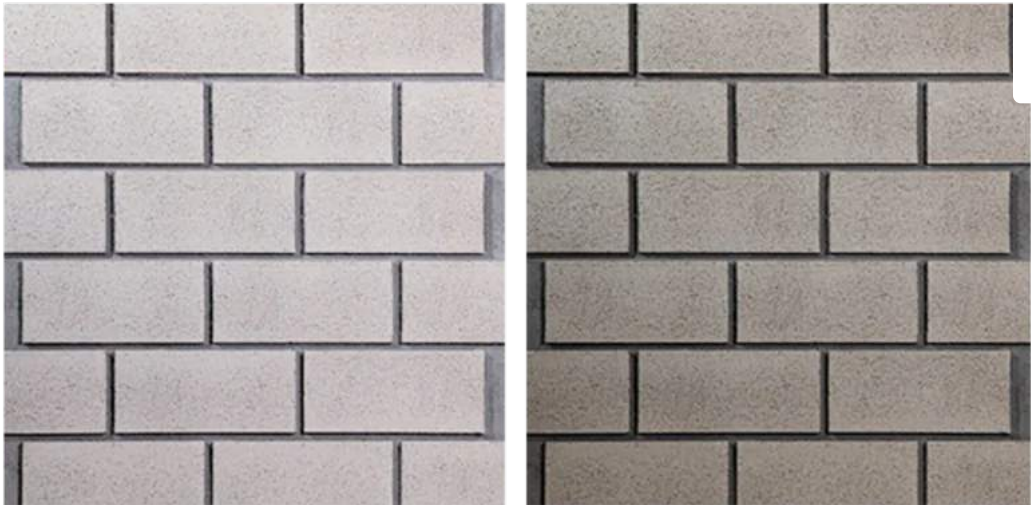


Receive a \$50 credit with [sample purchase\\*](#)

Styling and Profiling

Modern

Deeper, cleaner grout lines than traditional Cinder Block.



Reviews



Samples

Receive a \$50 credit with **sample purchase\*** X



CinderBlock - Modern Washed Grey Sample



CinderBlock - Modern Industrial Grey Sample

C

SHOP ALL SAMPLES

COMPANY

ABOUT US

CONTACT

SUPPORT

RETURNS

SHIPPING

FAQ

Reviews

SUBSCRIBE

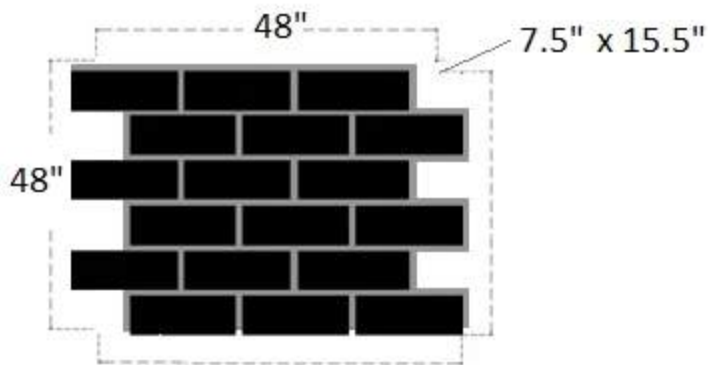




## Product Description

CinderBlock panels are made from pouring high-density polyurethane into a mold that was cast from real concrete blocks. This process gives the CinderBlock panel the truly authentic look of real cinder block. CinderBlock panels are extremely lightweight, are only ~1" thick and are simply screwed onto the wall. No need for intense labor or reinforcement of walls.

CinderBlock faux concrete panels are designed with the installer in mind. These faux concrete panels are easy to install as they were designed with a shiplap edge and can be cut with a normal wood saw blade. All that is required for install are a few simple tools and a few hours.







# TECHNICAL DOCUMENTS

Browse helpful tips and articles, government reports and material safety data sheets



Tips & Articles  
[Fire Properties & Fire Prevention Technical Information](#)

Notices

Resource Center

Save Idea



## Sustainability

For more information, please call Tech Services at 1-866-4HARDIE or email them at [info@jameshardie.com](mailto:info@jameshardie.com).

## Material Safety Data Sheets

*MSDS for Exterior Fiber-Cement (Medium Density) HZ5 and HZ10 products* covers:

HardiePlank® lap siding, HardiePanel® vertical siding, HardieSoffit® panel, HardieSoffit® Beaded Porch Panel, HardieShingle® siding, HardieShingle® notched panels, HardieShingle® individual shingles, Hardie® Reveal® Panel System, 7/16" HardieTrim® boards.

*SDS for Exterior Fiber-Cement (Medium Density) HZ5 and HZ10 products* covers:

HardiePlank® lap siding, HardiePanel® vertical siding, HardieSoffit® panel, HardieSoffit® Beaded Porch Panel, HardieShingle® siding, HardieShingle® notched panels, HardieShingle® individual shingles, Hardie® Reveal® Panel System, 7/16" HardieTrim® boards.

*MSDS for Exterior Fiber-Cement (Low Density) HZ5 and HZ10 products* covers:

HardieTrim board, HardieTrim® Fascia board, HardieTrim® Crown Moulding, HardieTrim® XLD, HardieTrim® Flex Board, HardieTrim® Batten, HardieTrim® BHT, HardieTrim® 5/4 board.

*SDS for Exterior Fiber-Cement (Low Density) HZ5 and HZ10 products* covers:

HardieTrim board, HardieTrim® Fascia board, HardieTrim® Crown Moulding, HardieTrim® XLD, HardieTrim® Flex Board, HardieTrim® Batten, HardieTrim® BHT, HardieTrim® 5/4 board.

*MSDS for Interior Fiber-Cement (Medium Density) products* covers:

Hardiebacker® cement board, HardieBacker 1/4" Board, Hardiebacker® 250 cement board, Hardiebacker® EZ Grid® cement board, Hardiebacker® 500 cement board, HardieFloor™ Wet Area Solution.

*SDS for Interior Fiber-Cement (Medium Density) products* covers:

Hardiebacker® cement board, HardieBacker 1/4" Board, Hardiebacker® 250 cement board, Hardiebacker® EZ Grid® cement board, Hardiebacker® 500 cement board, HardieFloor™ Wet Area Solution.

*MSDS for HardieWrap® weather barrier*

*MSDS for HardieWrap® flashing tape*



## MSDS for Touch-up Kits

To obtain the MSDS for Touch-up kits:

1. On the inside flap of the Touch-up kit box, or on the 12 pack case of Touch-up kit, locate the sticker with the product code [i.e. LLA0526]
2. Go to [www.valsparwood.com/msds/msds.jsp](http://www.valsparwood.com/msds/msds.jsp)
3. Enter the product code in the upper left corner of the website under MSDS/TDS
4. Click submit and the correct MSDS file should open

## Governments Reports, Evaluation Reports, and Bulletins

### 1. Fire Resistance Rated Wall Assemblies (1-hour fire walls):

[Click for Fire Wall Assemblies](#)

For Warnock Hersey Listings:

- Unless otherwise noted, the assemblies in this section have been evaluated for conformance to the following standards:
- ASTM-E119, Standard Methods of Fire Tests of Building Construction and Materials.
- CAN/ULC-S101, Standard Methods of Fire Endurance Tests of Building Construction and Materials.
- NFPA-251, Fire Tests of Building Construction and Materials.
- UBC-7-1-94, Uniform Building Code Standard.
- UL-263, Fire Tests of Building Construction and Materials.
- Designs listed are minimum construction requirements to achieve fire rating.
- Unless otherwise noted, fire ratings apply to tests conducted on both sides.

### 2. Sound Transmission Characteristics:

#### Products Covered    Bulletin

HardiePlank Lap	<a href="#">Technical Bulletin 07272007 - Sound</a>
Siding, Cemplank®	<a href="#">Transmission Loss Test Results for Sound</a>
Lap Siding,	<a href="#">Transmission Class (STC) and Outside/Inside</a>
HardieBacker	<a href="#">Transmission Class (OITC).</a>
Cement Board	

### 3. Intertek Warnock Hersey Product Listings:

[Click for Warnock Hersey Product Listings](#)

### 4. ICC-ES Product Evaluation Reports:

#### Products Covered    ICC-ES Product Evaluation Number

Resource Center

Save Idea



## Section 3.0

-Design Wind Load, see Table 5

-R-value, see Table 2

HardiePanel Siding, [ESR-1844](#) -**Noncombustibility**, See page 1

Cempanel® Siding Section 3.1

-**Flame Spread and Smoke Developed**, See page 1 Section 3.1-**1-hour Fire Walls**, See page 2 Section 4.3-**Design Wind Loads**, See page 4-5 Table 4-**R-values**, See page 3, Table 2-**California Building Code Chapter 7a****Wildland-Urban Interface**, See last two pagesHardieBacker [ESR-2280](#) - **Noncombustibility**, See page 1

Cement Boards Section 3.1

- **Flame Spread and Smoke Developed**, See page 1 Section 3.1- **1-hour Fire Walls**, See pages 4-5 Section 4.3HardiePlank Lap [ESR-2290](#) -**Noncombustibility**, See page 1

Siding, Section 3.1

Cemplank Lap **-Flame Spread and Smoke Developed**, See page 1 Section 3.1HardieShingle Siding-**1-hour Fire Walls**, See pages 2-3 Section 4.3Artisan® Lap Siding **-Design Wind Loads**, See pages 4-25 Tables 3-13-**R-values**, See page 4, Table 2-**California Building Code Chapter 7a****Wildland-Urban Interface**, See last two pagesHardieWrap Weather [ESR-2658](#) -**Air leakage**, See page 1 Section 3.2Barrier **-Flame Spread and Smoke Developed**, See page 1 Section 3.3**5. State of Florida Product Approval Numbers:**

Regarding the State of Florida Product Approvals, go to the website below and enter the Florida Approval Number from the Table below. [http://www.floridabuilding.org/pr/pr\\_app\\_srch.aspx](http://www.floridabuilding.org/pr/pr_app_srch.aspx)

Products Covered	Frame Type	Florida Approval
Resource Center		
		Save Idea



HardiePlank Lap Siding,	Wood	FL13192
Cemplank Lap Siding	Metal	FL13192
	Concrete Masonry Unit	FL13192
HardiePanel Siding,	Wood	FL13223
Cempanel Siding	Metal	FL13223
HardieShingle Siding	Wood	FL13192
	Metal	FL13192
	Concrete Masonry Unit	FL13192
HardieSoffitt	Wood	FL13265
	Metal	FL13265
Artisan Lap & V-Rustic Siding	Wood	FL10477
	Metal	FL10477

## 6. Miami-Dade County Florida Notice of Acceptance:

Regarding Miami-Dade County Florida Notice of Acceptance go to the website below and enter the NOA number from the Table below. [http://www.miamidade.gov/building/pc-search\\_app.asp](http://www.miamidade.gov/building/pc-search_app.asp)

Products Covered	Frame Type	NOA Number
HardiePlank Lap Siding,	Wood	NOA 15-0122.04
Cemplank Lap Siding	Metal	NOA 15-0122.04
HardiePanel Vertical Siding, Cempanel Vertical Siding	Wood	NOA 15-0122.04
	Metal	NOA 15-0122.04
HardieSoffit Panel, Cemsoffit®	Wood	NOA 15-0122.04
	Metal	NOA 15-0122.04
Artisan Lap Siding	Wood	NOA 15-0122.03
	Metal	NOA 15-0122.03

## 7. Texas Department of Insurance:

Products Covered	TDI Evaluation Report Number
HardiePlank Lap Siding,	<a href="#"><u>Texas Department of Insurance</u></a>

Resource Center

Save Idea

Siding,  
HardieShingle Siding

Artisan Lap Siding

*Texas Department of Insurance  
Product Evaluation EC-55*

## 8. City of Los Angeles Research Report:

### Products Covered

### City of Los Angeles Research Report Number

HardiePlank Lap Siding,  
Cemplank Lap Siding,  
HardiePanel Siding, Cempanel  
Siding,  
HardieShingle Siding,  
HardieSoffit Panel,  
HardieBacker Cement Board

*City of Los Angeles Research Report  
RR 24862*

## 9. WUI (Wildland Urban Interface) Compliance:

### Products Covered

### CalFire Building Material Listing

HardiePlank Lap Siding,  
Cemplank Lap Siding,  
HardiePanel Siding, Cempanel  
Siding,  
HardieShingle Siding,  
HardieSoffit Panel,  
Artisan Lap Siding

*California Office of the State Fire  
Marshal, Wildland Urban Interface  
Building Material Listing on James  
Hardie Building Products for use  
both on Exterior Walls and Under  
Eaves.*

## 10. Flood Resistance:

### Products Covered

### Memo

HardiePlank Lap Siding,  
Cemplank Lap Siding,  
HardiePanel Siding, Cempanel  
Siding,  
HardieShingle Siding,  
HardieSoffit Panel,  
Artisan Lap Siding

*JHBP Internal Memorandum dated  
11/3/97 from John Mulder regarding  
FEMA Recognition*

## 11. HUD Material Release Reports:

Resource Center

Save Idea



HardiePlank Lap Siding,  
 Cemplank Lap Siding,  
 HardiePanel Siding, Cempanel  
 Siding, HardieShingle Siding,  
 HardieSoffit Panel, HardieBacker  
 Cement Boards

[U.S. HUD Materials Release 1263g](#)

HardieBacker Cement Boards

[U.S. HUD Materials Release 1268f](#)

## 12. Canada CCMC Report:

### Products Covered

HardiePlank Lap Siding,  
 HardiePanel Siding,  
 HardieShingle Siding,

### CCMC Product Evaluation Number

[National Research Council Canada](#)

[CCMC 12678-R - Noncombustible construction](#), see page 2 Section 3  
 bullet point 1

[Ontario Canada Ruling 95-17-36-  
 \(12678-R\)](#)

**13. City of New York**, [City of New York Department of Buildings Report MEA 233-93-M](#)

**14. CA DSA**, [Division of the State Architect Acceptance Report PA-019](#)

**15. Puerto Rico**, [JHBP Internal Memorandum dated 11/26/97 from John Mulder regarding ARPE Recognition](#)

## 16. Building Code Reference Sections:

### Fiber-cement Siding:

	<b>2006 International Building Code®</b>	<b>2006 International Residential Code®</b>
Definition of Fiber-Cement	Section 1402.1	Section R202
Definition of Fiber-Cement Performance	Section 1404.10	Table 703.4 footnote r
General Fiber-Cement Fastening	Section 1405.15	Table 703.4
Installation of Fiber-Cement Lap Siding	Section 1405.17.2	Section R703.10.2

Governing Performance Standard	ASTM C 1186	ASTM C 1186
--------------------------------	-------------	-------------

**Fiber-cement Interior Tile Backerboard:**

	<b>2006 International Building Code®</b>	<b>2006 International Residential Code®</b>
Installation of Fiber Cement Backerboards as a Base for Tile in Wet Areas	Section 2509.2	Section R702.4.2

Governing Performance Standard	ASTM C 1288	ASTM C 1288
--------------------------------	-------------	-------------



REQUEST  
INFORMATION

- Request a Quote
- Find a Contractor
- Request a Brochure
- Request a Sample
- Find a Dealer

PRODUCTS

- HardiePlank® Lap Siding
- HardieShingle® Siding
- HardiePanel® Vertical Siding
- HardieTrim® Boards
- HardieSoffit® Pre-Cut Panels
- Artisan® by James Hardie
- HardieBacker® Cement Board

QUICK LINKS

- Exterior House Color Visualizer
- Explore House Siding Colors
- House Siding Ideas Gallery
- The Recognized Leader
- Lifetime Value
- Curb Appeal
- Performance and Durability
- Design Flexibility
- Testimonials
- Resource Center

ABOUT US

- For Pros
- Our Company
- Careers
- News
- Investor Relations

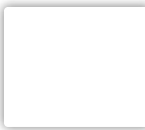
CONNECT WITH US

- Privacy Policy
- Terms & Use



© 2025 James Hardie Building Products Inc.  
All Rights Reserved.  
™ or ® denote trademarks or registered trademarks of James Hardie Technology Ltd.

Questions?  
  
1-888-J-HARDIE (1-888-542-7343)



2019

# TECHNICAL GUIDE



eze//  
breeze®





e/k

TABLE OF CONTENTS

General Specifications.....4

Vertical 4-Track (4V60).....8

Horizontal Side Slider (SS10)..... 11

Side Slider Garage Door Screen (SS30) ..... 13

Size Chart (SS10/SS30) ..... 15

Heavy Duty Lip Frame Fixed Lite (HLF20) ..... 16

Standard Lip Frame Fixed-Lite (LF20)..... 17

Removable Vent Fixed Lite (RV20) ..... 18

Cabana Door (CD90) ..... 19



## GENERAL SPECIFICATIONS

### PERFORMANCE

- Transforms porches, patios, garages, and more into your customers' new favorite spaces
- Uses vinyl-glazed panels that are remarkably strong, shatterproof, and flexible
- Floor to ceiling views and ventilation
- Creates beautiful indoor/outdoor living for any homeowner's style
- Vents can be removed in seconds for easy cleaning
- Provides a barrier against outdoor pests
- Easy operation thanks to corrosion-resistant wheels
- Eliminates 99% of harmful UV rays
- Consumers choose their level of privacy with various options

### ENERGY PERFORMANCE

- Shade and reduced solar heat gain
- Reduction of extreme heat, cold, and humidity

### CONTINUOUS PROTECTION

- Works well in hot and cold climates

### FEATURES

- Custom built to meet any style
- Easy to operate and very low maintenance
- Durable aluminum framing
- Light weight and customizable

### RESIDENTIAL WARRANTY

- Lifetime frame warranty\*
- 10-year warranty on vinyl, screens, and moving parts\*

*\* Some restrictions may apply. Refer to full Eze-Breeze warranty for complete details.*

### STYLES

- Vertical 4-Track
- Horizontal Side Slider
- Side Slider Garage Door Screen
- Standard Fixed Lite Lip Frame and Trapezoid
- Heavy Duty Fixed Lite Lip Frame and Trapezoid
- Removable Vent Fixed Lite
- Cabana Door

### FRAMES:

- Heavy-duty extruded aluminum
- Outside Mount (OSM): Mounted from the outside; installation flange on the exterior side of the opening
- Inside Mount (ISM): Mounted from the inside; installation flange on the interior side of the opening

### FRAME COLORS

- Standard: White
- Optional: Bronze, Beige

### VINYL COLORS

- Standard: Clear
- Optional: Smoke Gray, Bronze, Dark Gray

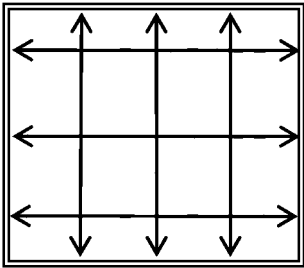
### SCREEN MESH AND COLORS

- Standard: 1814 Charcoal
- Optional: 1814 Gray, 1816 Charcoal, 1816 Gray, 2020 Charcoal, 2020 Gray, Charcoal SunScreen®, White Sunscreen®, BetterVue® Charcoal

### SIZE INFORMATION

#### Measuring:

- We recommend that at least three (3) measurements be taken on the width and height of the opening
- When placing your order, give the smallest recorded measurement for both width and height

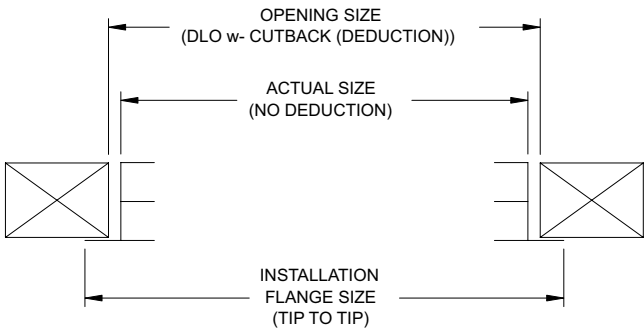


#### Ordering:

- “Opening Size” measurement is preferred
- All sizes must be given width x height in inches

#### Size Selection (varies by product):

Opening size with 1/8” cutback (deduction)	Size of the finished opening; product will be manufactured 1/8” smaller in width & height
Opening size with 1/4” cutback (deduction)	Size of the finished opening; product will be manufactured 1/4” smaller in width & height
Opening size with 3/8” cutback (deduction)	Size of the finished opening; product will be manufactured 3/8” smaller in width & height
Actual window size with no cutback (no deductions)	Actual unit size not including the installation flange; product will be manufactured to this size



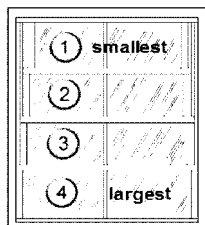


## GENERAL SPECIFICATIONS

### VENT INFORMATION

#### Identifying Vertical 4-Track Vents

Vents are numbered 1-4 starting at the top



Vent #1 - smallest in width and located in the outermost track

Vent #2 - located in the 2nd track from the exterior

Vent #3 - located in the 3rd track from the exterior

Vent #4 - largest in width and located in the innermost track

#### Identifying Side Slider Vents and Tracks:

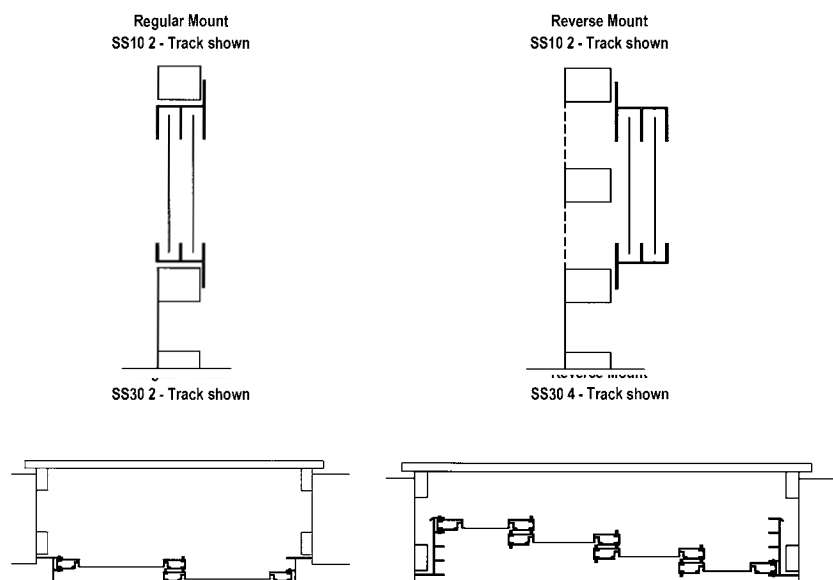
Vents are numbered left to right from the inside-looking-out. Tracks are lettered A - D from inside-looking-out.

### MOUNTING INFORMATION

#### Inside Mount Horizontal Side Sliders:

Regular Mount: Weepholes are located on the opposite side of the flange

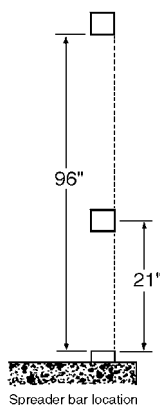
Reverse Mount: Weepholes are located on the same side as the flange



### SPREADERBAR INFORMATION

#### Identifying Side Slider spreader bar location

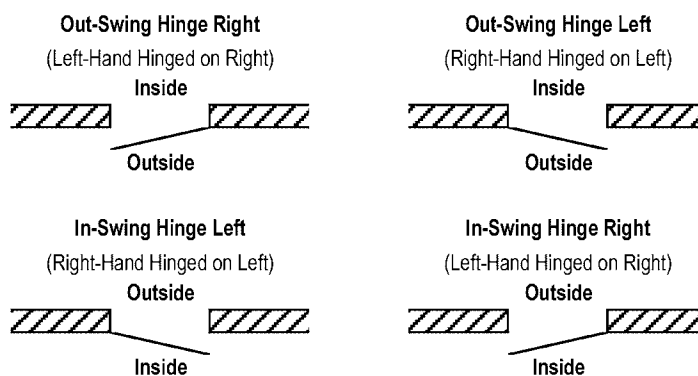
Measure from the bottom of the opening to the center of the spreader bar



### DOOR INFORMATION

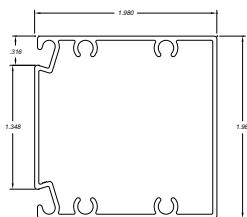
#### Cabana Door Hinge and Swing

All doors are viewed from the direction of swing



### 2 x 2 MULL POST

Aluminum post for mulling Eze-Breeze products together. Available in 16' stock lengths.



### TRANSPORTATION

Products delivered by 3rd-party carrier may have size limitations. Consult your Eze-Breeze representative for details.

**Note:** Eze-Breeze reserves the right to change material design and/or construction without notice or liability.



# VERTICAL 4-TRACK (4V60)

## FEATURES:

- 1" nominal front flange
- 2" nominal frame depth
- Glazed with 10-mil clear vinyl
- Outside mount or inside mount frame
- Equal interlocking vents
- Tilt in, removable vents
- Spreader bar(s)
- 1814 charcoal screen rolled-in frame - Outside mount

## OPTIONS:

- 2-, 3-, and 4-vent configurations
- Custom sizes with or without deduction
- Mixed vinyl color in vents
- Lipframe screen attached to frame - Inside mount

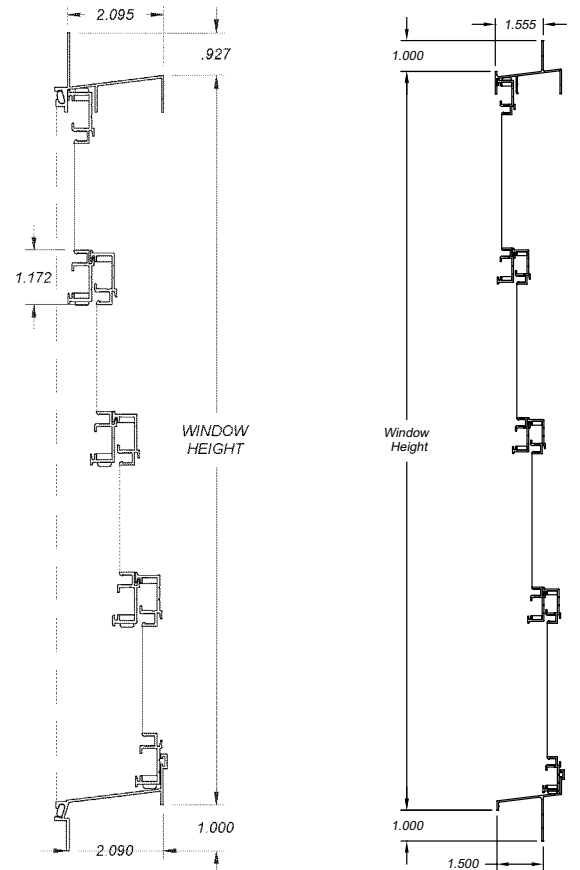
## SIZING

### Outside Mount Frame:

- Standard: Opening size with 1/8" deduction in width and height
- Option: Opening size with 1/4" deduction in width and height
- Option: Actual unit size without deductions

### Inside Mount Frame:

- Standard: Opening size with 3/8" deduction in width and height
- Option: Actual unit size without deductions

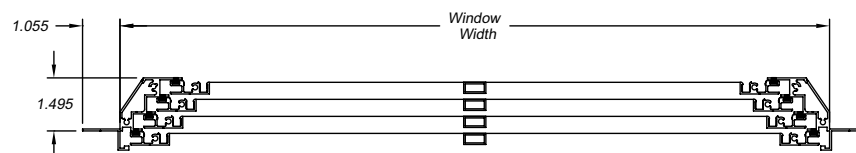


OUTSIDE MOUNT FRAME

INSIDE MOUNT FRAME

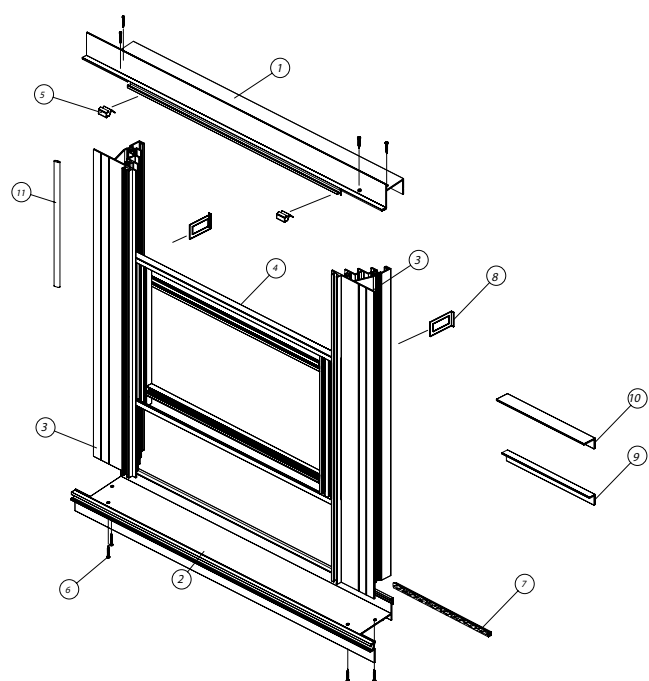


OUTSIDE MOUNT FRAME



INSIDE MOUNT FRAME

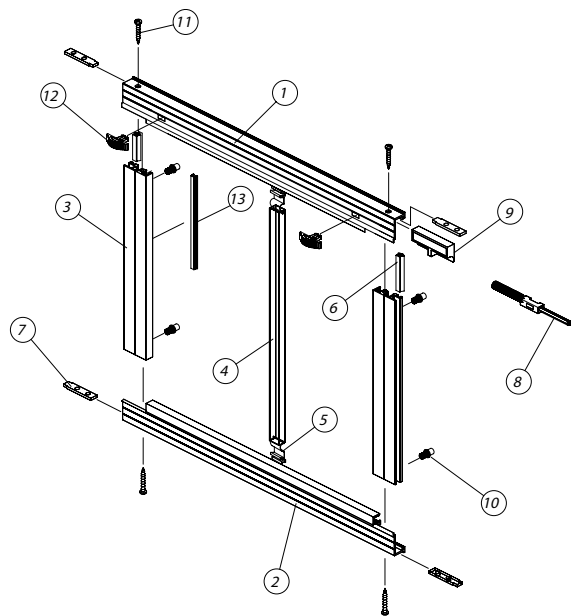
## VERTICAL 4-TRACK OUTSIDE MOUNT FRAME - SINGLE



### ITEM # DESCRIPTION

- 1 Frame Head
- 2 Frame Sill
- 3 Frame Jamb
- 4 Vertical 4-Track Vent (assembled)
- 5 Top Track Vent Clip
- 6 Frame Assembly Screws
- 7 Frame Sill Weatherstrip
- 8 Installation Clip
- 9 4T3V - Track Filler Angle (1/2" x 3/4")
- 10 4T2V - Track Filler Angle (1" x 1")
- 11 Flat Spline

## VERTICAL 4-TRACK VENT ASSEMBLY



### ITEM # DESCRIPTION

- 1 Vent Head
- 2 Vent Sill
- 3 Vent Jamb
- 4 Spreader Bar
- 5 Spreader Bar Clip
- 6 Vent Jamb Weatherstrip
- 7 Vent Spacer
- 8 Slide Bolt Assembly (slide bolt & spring)
- 9 Slide Bolt Stop Block
- 10 Spring Cap Assembly
- 11 Vent Assembly Screw
- 12 Thumb Latch
- 13 Rigid V-Spline (vents)



# VERTICAL 4-TRACK

## (4V60)

VERTICAL 4-TRACK SINGLE UNIT		OPENING WIDTH (INCHES)											
		OSM ISM	12 12 1/4	18 18 1/4	24 24 1/4	30 30 1/4	36 36 1/4	42 42 1/4	48 48 1/4	54 54 1/4	60 60 1/4	66 66 1/4	72 1/8 72 3/8
		ACTUAL WIDTH (INCHES) USING STANDARD DEDUCTIONS											
OPENING HEIGHT (INCHES)	OSM ISM	ACTUAL SIZES	11 7/8	17 7/8	23 7/8	29 7/8	35 7/8	41 7/8	47 7/8	53 7/8	59 7/8	65 7/8	72
	24 24 1/4	23 7/8	2 Vent 3 Vent 4 Vent	2 Vent 3 Vent 4 Vent	2 Vent 3 Vent 4 Vent	2 Vent 3 Vent 4 Vent	2 Vent 3 Vent 4 Vent	2 Vent 3 Vent 4 Vent	2 Vent 3 Vent 4 Vent	2 Vent 3 Vent 4 Vent	2 Vent 3 Vent 4 Vent	2 Vent 3 Vent 4 Vent	2 Vent 3 Vent 4 Vent
	30 30 1/4	29 7/8	2 Vent 3 Vent 4 Vent	2 Vent 3 Vent 4 Vent	2 Vent 3 Vent 4 Vent	2 Vent 3 Vent 4 Vent	2 Vent 3 Vent 4 Vent	2 Vent 3 Vent 4 Vent	2 Vent 3 Vent 4 Vent	2 Vent 3 Vent 4 Vent	2 Vent 3 Vent 4 Vent	2 Vent 3 Vent 4 Vent	2 Vent 3 Vent 4 Vent
	36 36 1/4	35 7/8	2 Vent 3 Vent 4 Vent	2 Vent 3 Vent 4 Vent	2 Vent 3 Vent 4 Vent	2 Vent 3 Vent 4 Vent	2 Vent 3 Vent 4 Vent	2 Vent 3 Vent 4 Vent	2 Vent 3 Vent 4 Vent	2 Vent 3 Vent 4 Vent	2 Vent 3 Vent 4 Vent	2 Vent 3 Vent 4 Vent	2 Vent 3 Vent 4 Vent
	42 42 1/4	41 7/8	2 Vent 3 Vent 4 Vent	2 Vent 3 Vent 4 Vent	2 Vent 3 Vent 4 Vent	2 Vent 3 Vent 4 Vent	2 Vent 3 Vent 4 Vent	2 Vent 3 Vent 4 Vent	2 Vent 3 Vent 4 Vent	2 Vent 3 Vent 4 Vent	2 Vent 3 Vent 4 Vent	2 Vent 3 Vent 4 Vent	2 Vent 3 Vent 4 Vent
	48 48 1/4	47 7/8	2 Vent 3 Vent 4 Vent	2 Vent 3 Vent 4 Vent	2 Vent 3 Vent 4 Vent	2 Vent 3 Vent 4 Vent	2 Vent 3 Vent 4 Vent	2 Vent 3 Vent 4 Vent	2 Vent 3 Vent 4 Vent	2 Vent 3 Vent 4 Vent	2 Vent 3 Vent 4 Vent	3 Vent 4 Vent	3 Vent 4 Vent
	54 54 1/4	53 7/8	2 Vent 3 Vent 4 Vent	2 Vent 3 Vent 4 Vent	2 Vent 3 Vent 4 Vent	2 Vent 3 Vent 4 Vent	2 Vent 3 Vent 4 Vent	2 Vent 3 Vent 4 Vent	2 Vent 3 Vent 4 Vent	2 Vent 3 Vent 4 Vent	3 Vent 4 Vent	3 Vent 4 Vent	3 Vent 4 Vent
	60 60 1/4	59 7/8	2 Vent 3 Vent 4 Vent	2 Vent 3 Vent 4 Vent	2 Vent 3 Vent 4 Vent	2 Vent 3 Vent 4 Vent	2 Vent 3 Vent 4 Vent	2 Vent 3 Vent 4 Vent	2 Vent 3 Vent 4 Vent	3 Vent 4 Vent	3 Vent 4 Vent	3 Vent 4 Vent	3 Vent 4 Vent
	60 1/2 60 3/4	60 3/8	2 Vent 3 Vent 4 Vent	2 Vent 3 Vent 4 Vent	2 Vent 3 Vent 4 Vent	2 Vent 3 Vent 4 Vent	2 Vent 3 Vent 4 Vent	2 Vent 3 Vent 4 Vent	2 Vent 3 Vent 4 Vent	3 Vent 4 Vent	3 Vent 4 Vent	3 Vent 4 Vent	4 Vent
	66 66 1/4	65 7/8	3 Vent 4 Vent	3 Vent 4 Vent	3 Vent 4 Vent	3 Vent 4 Vent	3 Vent 4 Vent	3 Vent 4 Vent	3 Vent 4 Vent	3 Vent 4 Vent	3 Vent 4 Vent	3 Vent 4 Vent	4 Vent
	72 72 1/4	71 7/8	3 Vent 4 Vent	3 Vent 4 Vent	3 Vent 4 Vent	3 Vent 4 Vent	3 Vent 4 Vent	3 Vent 4 Vent	3 Vent 4 Vent	3 Vent 4 Vent	3 Vent 4 Vent	4 Vent	4 Vent
	78 78 1/4	77 7/8	3 Vent 4 Vent	3 Vent 4 Vent	3 Vent 4 Vent	3 Vent 4 Vent	3 Vent 4 Vent	3 Vent 4 Vent	3 Vent 4 Vent	3 Vent 4 Vent	4 Vent	4 Vent	4 Vent
	84 84 1/4	83 7/8	3 Vent 4 Vent	3 Vent 4 Vent	3 Vent 4 Vent	3 Vent 4 Vent	3 Vent 4 Vent	3 Vent 4 Vent	3 Vent 4 Vent	3 Vent 4 Vent	4 Vent	4 Vent	4 Vent
	89 7/8 90 1/8	89 3/4	3 Vent 4 Vent	3 Vent 4 Vent	3 Vent 4 Vent	3 Vent 4 Vent	3 Vent 4 Vent	3 Vent 4 Vent	3 Vent 4 Vent	4 Vent	4 Vent	4 Vent	Not Available
	90 90 1/4	89 7/8	4 Vent	4 Vent	4 Vent	4 Vent	4 Vent	4 Vent	4 Vent	4 Vent	4 Vent	4 Vent	Not Available
	96 96 1/4	95 7/8	4 Vent	4 Vent	4 Vent	4 Vent	4 Vent	4 Vent	4 Vent	4 Vent	4 Vent	Not Available	Not Available
	102 102 1/4	101 7/8	4 Vent	4 Vent	4 Vent	4 Vent	4 Vent	4 Vent	4 Vent	4 Vent	4 Vent	Not Available	Not Available
	106 106 1/4	105 7/8	4 Vent	4 Vent	4 Vent	4 Vent	4 Vent	4 Vent	4 Vent	4 Vent	Not Available	Not Available	Not Available
	113 1/8 113 3/8	113	4 Vent	4 Vent	4 Vent	4 Vent	4 Vent	4 Vent	4 Vent	4 Vent	Not Available	Not Available	Not Available

To use this chart with twin and triple units do the following:

Twin unit: divide opening width by 2 then locate that size on the chart above

Triple unit: divide opening width by 3 then locate that size on the chart above

# HORIZONTAL SIDE SLIDER (SS10)

## FEATURES:

- 7/8" nominal front flange - Outside mount frame
- 1-1/8" front flange - Inside mount frame
- 2-track frame depth 1-5/8"
- 4-track frame depth 3-3/8"
- Sill with flange
- Glazed with 10-mil clear vinyl
- Outside mount or inside mount frame
- Equal removable vents
- Factory installed swivel latches
- Neoprene rollers
- Spreader bar(s)
- 1814 charcoal screen rolled-in frame

## OPTIONS:

- Configurations with up to 10 vents
- Custom sizes with or without deduction
- Mixed vinyl color in vents
- Unequal vents
- Pull handle
- Standard or reverse stack

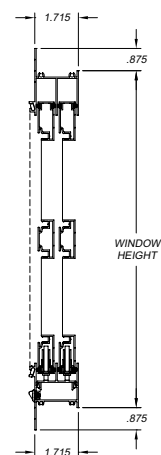
## SIZING

### Outside Mount Frame:

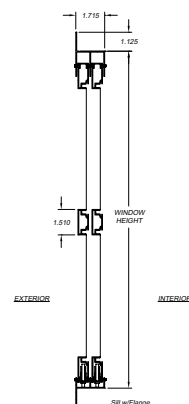
- Standard: Opening size with 1/8" deduction in width and height
- Option: Opening size with 1/4" deduction in width and height
- Option: Actual unit size without deductions

### Inside Mount Frame:

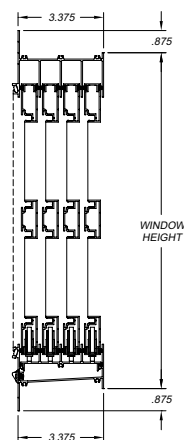
- Standard: Opening size with 3/8" deduction in width and height
- Option: Actual unit size without deductions



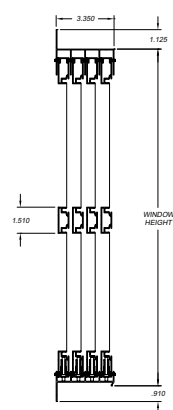
**OUTSIDE MOUNT  
FRAME - 2-TRACK**



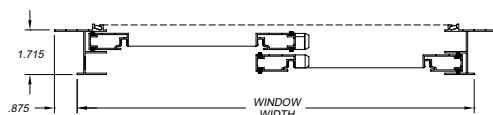
**INSIDE MOUNT  
FRAME - 2-TRACK**



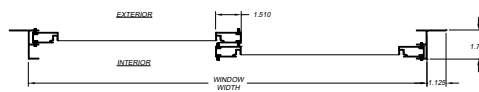
**OUTSIDE MOUNT  
FRAME - 4-TRACK**



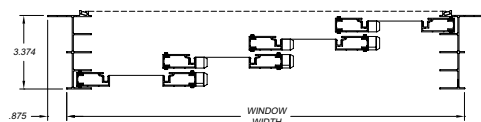
**INSIDE MOUNT  
FRAME - 4-TRACK**



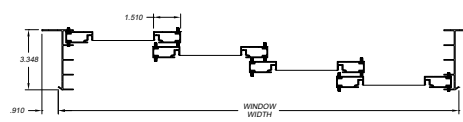
**OUTSIDE MOUNT  
FRAME - 2-TRACK**



**INSIDE MOUNT  
FRAME - 2-TRACK**



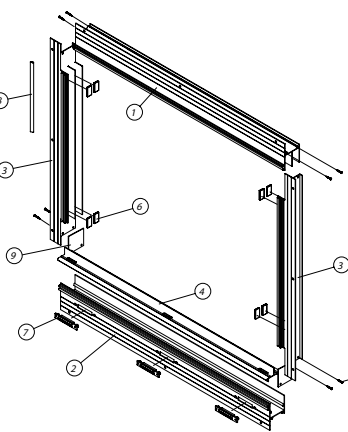
**OUTSIDE MOUNT  
FRAME - 4-TRACK**



**INSIDE MOUNT  
FRAME - 4-TRACK**

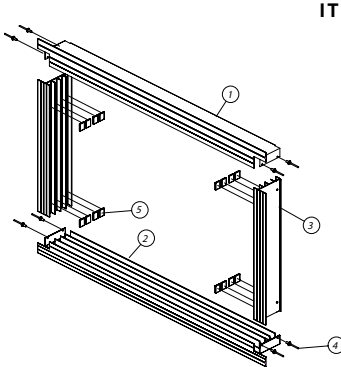
# HORIZONTAL SIDE SLIDER (SS10)

## OUTSIDE MOUNT FRAME - 2-TRACK SHOWN



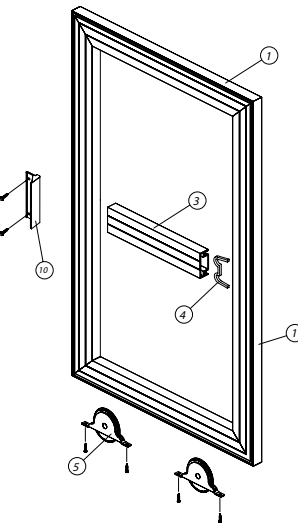
ITEM #	DESCRIPTION
1	Frame Head
2	Frame Sill
3	Frame Jamb
4	Track Cover
5	Frame Assembly Screw
6	Main Frame Bumper
7	Weephole Cover
8	Flat Spine
9	2-Track Sill Gasket

## INSIDE MOUNT FRAME - 4-TRACK SHOWN



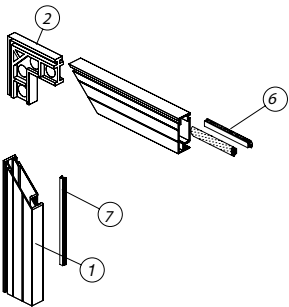
ITEM #	DESCRIPTION
1	Frame Head
2	Frame Sill
3	Frame Jamb
4	Frame Assembly Rivet
5	Main Frame Bumper

## HORIZONTAL SIDE SLIDER VENT ASSEMBLY

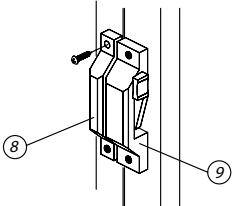


ITEM #	DESCRIPTION
1	Vent Head, Sill, and Jamb
2	Corner Key
3	Spreader Bar
4	Spreader Bar Clip
5	Neoprene Wheels
6	Vent Weatherstrip
7	Rigid V-spline
8	Swivel Latch Keeper
9	Swivel Latch
10	Pull Handle (Optional)

## VENT CORNER ASSEMBLY



## LATCH ASSEMBLY





# SIDE SLIDER GARAGE DOOR SCREEN (SS30)

## FEATURES:

- 1-1/8" front flange
- 2-track frame depth 1-5/8"
- 4-track frame depth 3-3/8"
- Sill without flange and threshold both sides
- Glazed with 1814 charcoal screen mesh
- Inside mount frame
- Equal removable vents
- Factory installed thumb pulls
- Neoprene rollers
- Spreader bar(s)

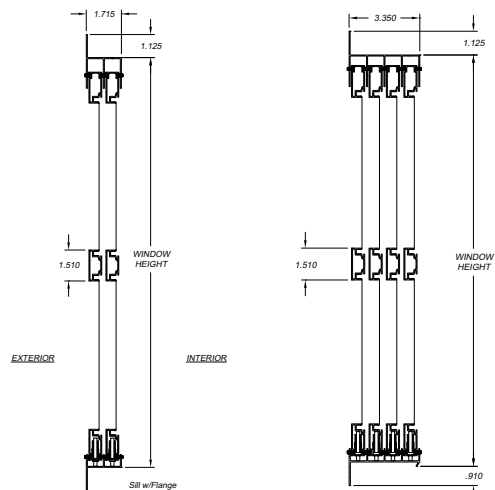
## OPTIONS:

- Configurations with up to 10 vents
- Custom sizes with or without deduction
- Kickplate 8", 12", or 16"
- Unequal vents
- Glazed with 10-mil vinyl
- Pull handle
- Factory installed swivel latches
- Standard or reverse stack
- Regular or reverse mounting

## SIZING

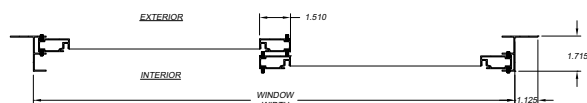
### Inside Mount Frame:

- Standard: Opening size with 3/8" deduction in width and height
- Option: Actual unit size without deductions

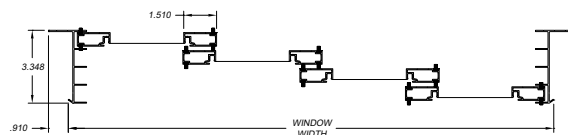


INSIDE MOUNT  
FRAME - 2-TRACK

INSIDE MOUNT  
FRAME - 4-TRACK



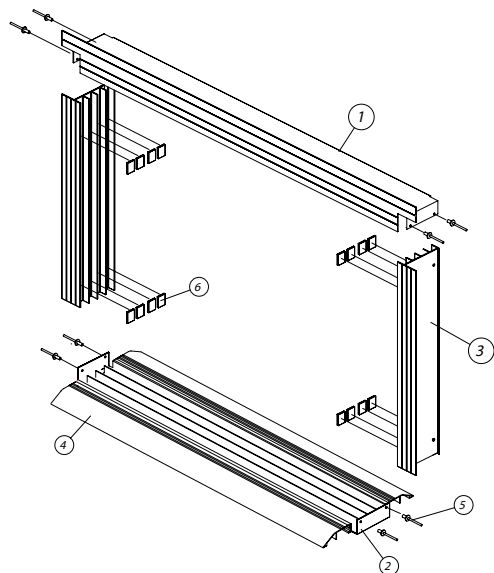
INSIDE MOUNT  
FRAME - 2-TRACK



INSIDE MOUNT  
FRAME - 4-TRACK

# SIDE SLIDER GARAGE DOOR SCREEN (SS30)

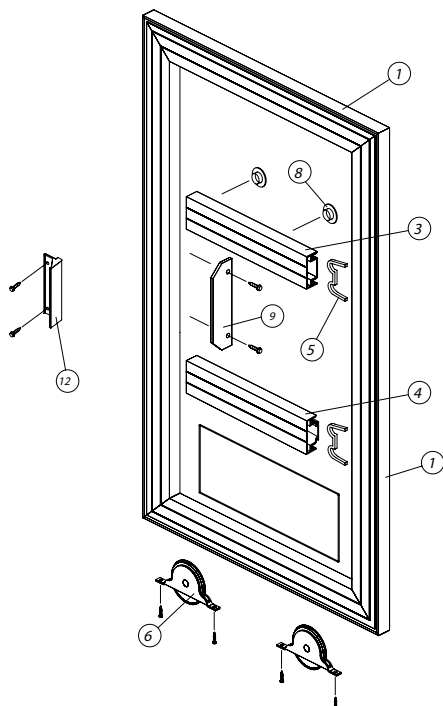
## INSIDE MOUNT FRAME - 4-TRACK SHOWN



### ITEM # DESCRIPTION

- 1 Frame Head
- 2 Frame Sill
- 3 Frame Jamb
- 4 Threshold
- 5 Frame Assembly Rivet
- 6 Main Frame Bumper

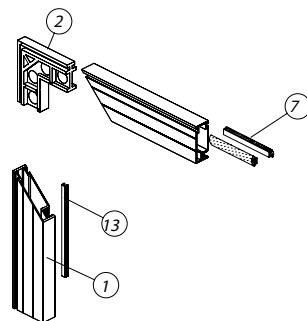
## SIDE SLIDER GARAGE DOOR SCREEN VENT ASSEMBLY



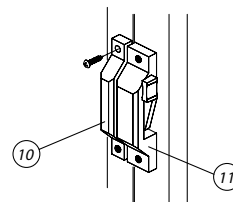
### ITEM # DESCRIPTION

- 1 Vent Head, Sill, and Jamb
- 2 Corner Key
- 3 Spreader Bar
- 4 Spreader Bar w/Kickplate Groove
- 5 Spreader Bar Clip
- 6 Neoprene Wheels
- 7 Vent Weatherstrip
- 8 Thumb Pull
- 9 Come-Along
- 10 Swivel Latch Keeper
- 11 Swivel Latch
- 12 Pull Handle (Optional)
- 13 Rigid V-Spline (Vents)

## VENT CORNER ASSEMBLY



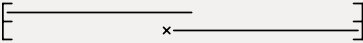
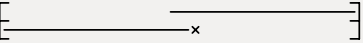
## LATCH ASSEMBLY



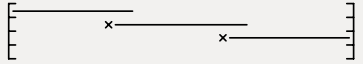
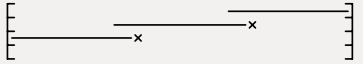
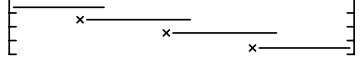
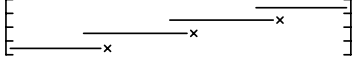
# SIZE CHART

(SS10 / SS30)

## 2-TRACK UNIT CONFIGURATIONS

VENT QTY/CONFIGURATION	STANDARD VENT STACK	REVERSE VENT STACK	OPENING SIZES	
<b>2 Vent</b> 2T2V Stacked			<b>Min (Vinyl / Screen)</b> <b>Max w/Vinyl Vents</b> <b>Max w/Screen Vents</b>	24" x 10" 108" x 108" 120" x 108"

## 4-TRACK UNIT CONFIGURATIONS

VENT QTY/CONFIGURATION	STANDARD VENT STACK	REVERSE VENT STACK	OPENING SIZES	
<b>3 Vent</b> 4T3V Stacked			<b>Min (Vinyl / Screen)</b> <b>Max w/Vinyl Vents</b> <b>Max w/Screen Vents</b>	36" x 10" 162" x 108" 180" x 108"
<b>4 Vent</b> 4T4V Stacked			<b>Min (Vinyl / Screen)</b> <b>Max w/Vinyl Vents</b> <b>Max w/Screen Vents</b>	48" x 10" 216" x 108" 240" x 108"

SS10 & SS30 inside mount units that exceed 192" actual unit width will be spliced.  
Configurations available up to 10 vents. Contact your Customer Care Representative for additional information.



## HEAVY DUTY LIP FRAME FIXED LITE (HLF20)

### FEATURES:

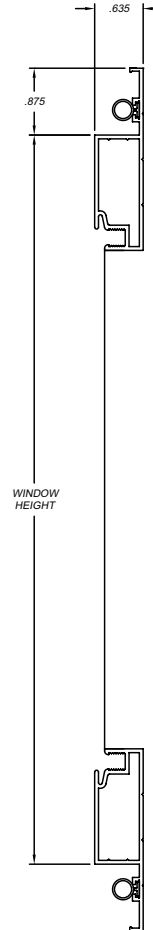
- 7/8" nominal front flange
- 5/8" nominal frame depth
- Glazed with 10-mil clear vinyl
- Outside mount frame
- Spreader bar(s)

### OPTIONS:

- Custom sizes with or without deduction
- Glazed with screen mesh
- Trapezoid shape

### PERFORMANCE:

- Minimum Lip Frame actual size 5-1/2" x 5-1/2"
- Minimum Trapezoid actual size 5-1/2" x 5-1/2" x 4"
- Maximum Lip Frame actual size 144" x 50" or 124" x 84"
- Maximum Trapezoid actual size 144" x 50" or 124" x 84"



## STANDARD LIP FRAME FIXED LITE (LF20)

### FEATURES:

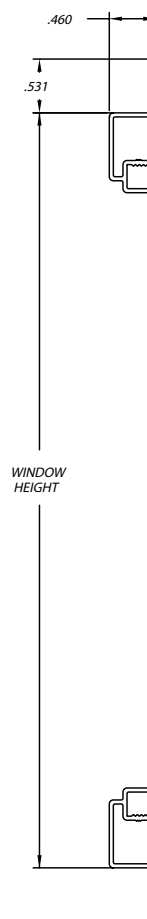
- 1/2" nominal front flange
- 7/16" nominal frame depth
- Glazed with 10-mil clear vinyl
- Foam tape factory applied
- Spreader bar(s)

### OPTIONS:

- Custom sizes with or without deduction
- Glazed with screen mesh
- Trapezoid shape

### PERFORMANCE:

- Minimum Lip Frame actual size 2-7/8" x 2-7/8"
- Minimum Trapezoid actual size 3" x 5" x 3"
- Maximum Lip Frame actual size 124" x 50-1/2" or 124" x 84"
- Maximum Trapezoid actual size 144" x 50-1/2" or 124" x 84"



## REMOVABLE VENT FIXED LITE (RV20)

### FEATURES:

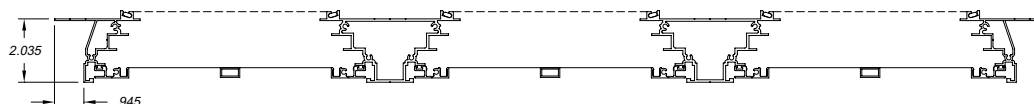
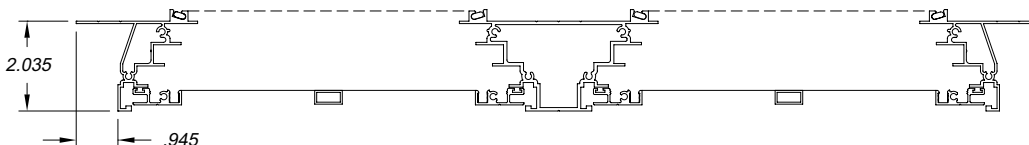
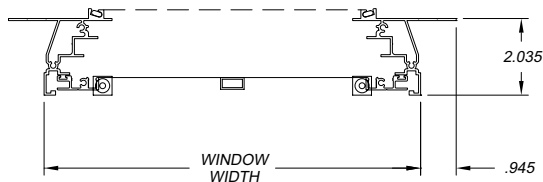
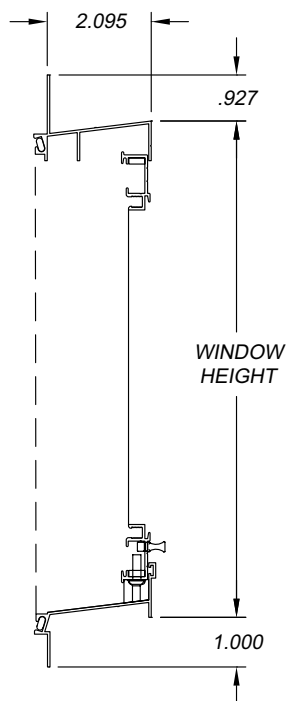
- 1" nominal front flange
- 2" nominal frame depth
- Glazed with 10-mil clear vinyl
- Outside mount frame
- Removable vent
- Spreader bar(s)
- 1814 charcoal screen rolled-in frame

### OPTIONS:

- Custom sizes with or without deduction

### PERFORMANCE:

- Minimum Single actual size 11-7/8" x 8"
- Minimum Twin actual size 42" x 8"
- Minimum Triple actual size 72" x 8"
- Maximum Single actual size 72" x 32"
- Maximum Twin actual size 108" x 32"
- Maximum Triple actual size 144" x 32"





## DOORS

# CABANA DOOR (CD90)

## FEATURES:

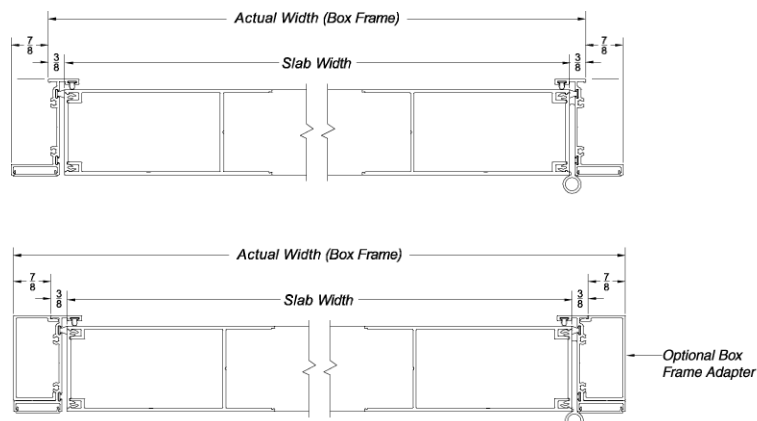
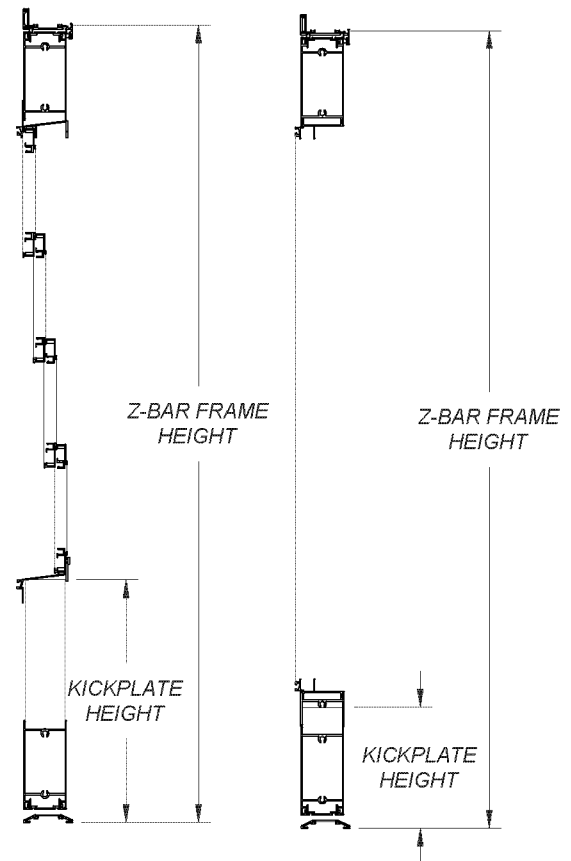
- Vertical 4-Track Style with 14-1/4" kickplate
- Fixed Lite Style with 4-3/4" kickplate
- Traditional Z-bar frame
- 2-1/4" frame depth
- 3/8" saddle threshold
- 2-1/8" bore with 2-3/8" setback
- Handle and deadbolt bore 8" on-center
- Pre-hung
- Glazed with 10-mil clear vinyl
- Outside mount out-swing or in-swing configuration

## OPTIONS:

- Nominal or custom sizes
- 1-7/8" or 2" bumper style threshold
- Single or double door configuration
- Lever type handle
- Equal leg frame adapter
- Glazed with screen mesh

## PERFORMANCE:

- Minimum Single door with Z-bar frame 22" x 48"
- Minimum Double door with Z-bar frame 48" x 48"
- Maximum Single door with Z-bar frame 44" x 96"
- Maximum Double door with Z-bar frame 88" x 96"

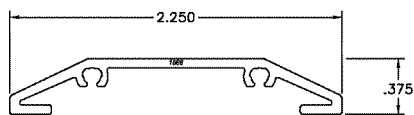


# CABANA DOOR

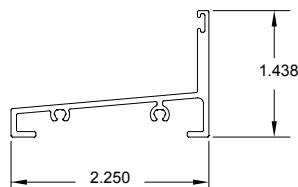
(CD90)

THRESHOLDS

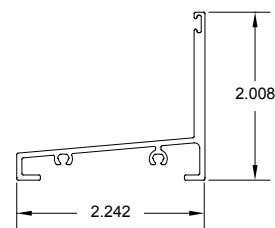
OUT-SWING OPTIONS:  
LOW/SADDLE: 3/8"



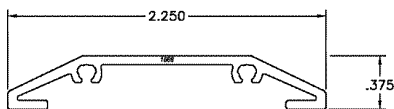
MEDIUM/BUMPER: 1 7/16"



HIGH/BUMPER: 2"



IN-SWING OPTIONS:  
LOW/SADDLE: 3/8"



NOMINAL DOOR SIZES

Z-BAR FRAME		
SIZE CODE	ACTUAL DOOR WIDTH x HEIGHT	FINISHED OPENING WIDTH x HEIGHT
2668	30 x 80	30 1/4 x 80 1/4
2868	32 x 80	32 1/4 x 80 1/4
3068	36 x 80	36 1/4 x 80 1/4
3868	44 x 80	44 1/4 x 80 1/4
6068	72 x 80	72 1/4 x 80 1/4
7468	88 x 80	88 1/4 x 80 1/4
2680	30 x 96	30 1/4 x 96 1/4
2880	32 x 96	32 1/4 x 96 1/4
3080	36 x 96	36 1/4 x 96 1/4
3880	44 x 96	44 1/4 x 96 1/4
6080	72 x 96	72 1/4 x 96 1/4
7480	88 x 96	88 1/4 x 96 1/4

BOX FRAME		
SIZE CODE	ACTUAL DOOR WIDTH x HEIGHT	FINISHED OPENING WIDTH x HEIGHT
2668	31 3/4 x 80 7/8	32 x 81 1/8
2868	33 3/4 x 80 7/8	34 x 81 1/8
3068	37 3/4 x 80 7/8	38 x 81 1/8
3868	45 3/4 x 80 7/8	46 x 81 1/8
6068	73 3/4 x 80 7/8	74 x 81 1/8
7468	89 3/4 x 80 7/8	90 x 81 1/8
2680	31 3/4 x 96 7/8	32 x 97 1/8
2880	33 3/4 x 96 7/8	34 x 97 1/8
3080	37 3/4 x 96 7/8	38 x 97 1/8
3880	45 3/4 x 96 7/8	46 x 97 1/8
6080	73 3/4 x 96 7/8	74 x 97 1/8
7480	89 3/4 x 96 7/8	90 x 97 1/8

## NOTES



## NOTES





INVENT. BUILD. DELIVER.

A collection of the best brands in windows and doors coming together to invent, build, and deliver the highest-quality and safest products in the fenestration industry.

#### THE PGT INNOVATIONS FAMILY OF BRANDS



Impact Resistant  
Windows & Doors  
WE'RE STRONGER™



CUSTOM WINDOWS + DOORS

WinDoor®  
HIGH PERFORMANCE DOORS & WINDOWS



western  
window systems

eze//  
breeze®  
EZE PORCH. EZE LIVING.

CGIC  
Architectural Products

EZEBREEZEHOME.COM

©2019 EZE-BREEZE. A PGT INNOVATIONS BRAND.

MG0100295



M O D E L

8670

## CARRIAGE HOUSE STEEL



## DOOR FEATURES

**Effective Joint Seals**

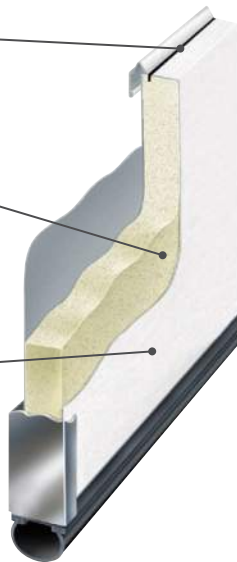
Snug fitting tongue-and-groove section joints reduce wind and weather from entering the garage.

**Foamed-In-Place Polyurethane Insulation**

Provides thermal efficiency with a U-factor\* of 0.16 and an R-value\*\* of 10 helps block street noise and makes the door operate more quietly.

**Detailed Construction**

Three-section styling on 7' high doors gives a custom design look. Our 8' high doors have four-section styling. All panels have finished interiors and low-profile hinges.

**TorqueMaster® Plus Counterbalance System**

Contains springs safely inside a steel tube to prevent accidental release of tension that could cause injury and features anti-drop safety technology.

**High Cycle Spring Option**

Choose a 25,000 cycle spring for more than twice the life of a standard torsion spring.

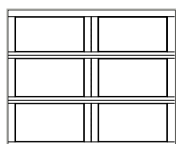
**Limited Lifetime Warranty**

\*U-factor is independently tested and verified per ANSI/DASMA 105 using solid doors and specific product sizes.

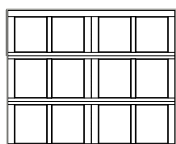
\*\*Wayne Dalton uses a calculated door section R-value for our insulated doors.



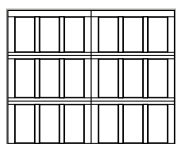
## 1 Choose Your Style



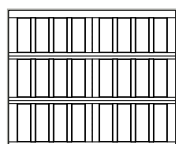
Westfield



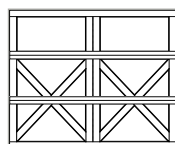
Newport



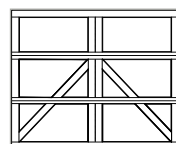
Providence



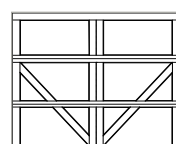
Oak Park



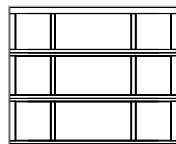
Lexington



Charleston



Bellview



Hampton



Camden

*Doors shown are 7' high Square Top with 3-section styling.  
8' high doors have 4-section styling. Most styles also available in solid arched tops.*

## 2 Choose Your Color

### Painted Finishes



White



Gray



Clay



Green

### Two-Toned Painted Finishes

All door sections will be painted in the color chosen.  
All trim pieces will be white.



Green/White



Gray/White



Clay/White

*Actual colors may vary from brochure due to fluctuations in the printing process. Always request a color sample from your Dealer for accurate color matching.*



Wayne Dalton's custom painting process offers more than 6,000 colors. See your Dealer for details.

### Stained Finishes



Mahogany



Walnut



Natural Oak



Green



Gray



Clay



Honduran Mahogany



Red Oak

*Model 8670 doors are hand stained for a natural look.*



*Newport panel, Red Oak stained finish*

### 3 Choose Your Windows



Plain Window Square (S)  
Plain Window Square (D)



6 Window Square (S)  
12 Window Square (D)



8 Window Square (S)  
16 Window Square (D)



12 Window Square (S)  
24 Window Square (D)



16 Window Square (S)  
32 Window Square (D)



Plain Window Arched (S)  
Plain Window Arched (D)



6 Window Arched (S)  
12 Window Arched (D)



8 Window Arched (S)  
16 Window Arched (D)



12 Window Arched (S)  
24 Window Arched (D)



16 Window Arched (S)  
32 Window Arched (D)

**S = Single car door**  
**D = Double car door**

*For arched windows on double car doors, a homeowner has the option of selecting a single arched or double arched windows. Not all windows available on all door sizes. See your Dealer for details.*

#### Glass Options



Clear\*\*



Gray Tinted Tempered\*



Green Tinted Tempered\*



Bronze Tinted Tempered\*



Obscure

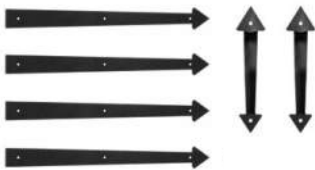


Satin Etched Tempered

*\*Non-Insulated only.*

*\*\*Also available in 1/2" insulated.*

### 4 Choose Your Decorative Hardware



Arrow



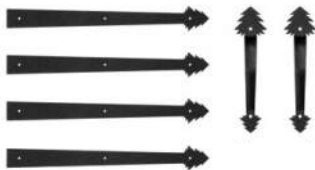
Aspen



Barcelona



Bean



Conifer



Fleur De Lis



Spear



AFTER

BEFORE



*Providence panel, Clay finish, Plain Window Square*

## Garage Door DESIGN CENTER

Discover the perfect garage door for your home with our Garage Door Design Center. Upload a photo of your home, experiment with panel designs, colors, window styles, and decorative hardware, and visualize the transformation. Try it today by scanning the QR code or visiting [wayne-dalton.com](http://wayne-dalton.com)—your journey to enhanced curb appeal starts with just a click!



## THERMAL PERFORMANCE



Wayne Dalton participates in the DASMA Thermal Performance Verification Program. The program verifies the thermal performance of sectional garage doors. The lower the U-factor rating, the better the thermal performance.



Symbol indicates verified U-factor rating in accordance with the DASMA Thermal Performance Verification Program.

**Wayne Dalton**

DISTRIBUTED BY:

2501 S. State Hwy. 121 Bus., Ste 200  
Lewisville, TX 75067

[wayne-dalton.com](http://wayne-dalton.com)



# Classic-Craft Door System Specifications

DOOR PANELS	Faces: 3/32-inch minimum thickness, proprietary fiberglass reinforced thermoset composite, textured to duplicate hand-crafted hardwood master or smooth surface, stainable and paintable. Door edges: machinable kiln-dried hardwood, flush and square with door faces, lock edge reinforced with full-length integrated 3-1/2-inch wide engineered lumber core. Door bottom edge: moisture- and decay-resistant composite. Core: foamed-in-place polyurethane, density 1.9 pcf minimum. Except where certification does not permit, standard factory sizes may be edge trimmed or end trimmed in shop or field to suit replacement door size requirements.
OPTIONAL FACTORY-GLAZED GLASS OR GLASS INSERTS	<p>Factory-glazed: perimeter moldings flush with skin and made as integral part of skin. Glass: minimum 1/8-inch tempered, two panes with sealed airspace between, air-space typically 1/2-inch. Options for leaded decorative glass panel in airspace between tempered glass panes with brass, brushed nickel or black nickel coming finishes. Etched glass options. Optional removable wood grilles. Optional permanent external lite dividers</p> <p>Inserts (lites): perimeter frames in raised-molding patterns, composite frame moldings wood grained or matte black aluminum, with molding patterns complementing raised panel moldings, stainable or paintable, screw-fastened to doors, screw holes concealed with grained plugs in matching material. Glass: minimum 1/8-inch tempered, two panes with sealed airspace between, airspace typically 3/4-inch. Options for leaded decorative glass panel or wrought iron grille in air space between tempered glass panes with brass, brushed nickel or black nickel coming finishes. Wrought iron grille available in matte black only. Etched glass options. Optional removable wood grilles.</p>
OPTIONAL DECORATIVE PANELS	Molded from proprietary fiberglass-reinforced thermoset composite, wood grained to match door faces, stainable or paintable, fastened with very high bond tape.
GASKETING, WEATHERSTRIPPING	Jacketed thermoset open-cell foam, press-fit in kerfs at jamb stops in frames. Extruded thermoplastic elastomer, finned and chambered design, press-fit into bottom kerf of doors. Corner pads at bottom margin corners from jacketed thermoset open-cell foam.
HINGES, STRIKES, MULTI-POINT LOCKING SYSTEM	Steel, ball-bearing design, with a variety of finishes. Screws plated and finished to match hardware. Standard hinge size 4 x 4 x .098 inches. Strikes are proprietary adjustable type, permitting in-out adjustment of door in frame, up to 3/16 inch. Multi-point locking system is available in manual shootbolt or tongue versions.
FRAMES	Milled from 5/4 kiln-dried pine, profiled with 1/2-inch stop, standard depth 4-9/16 inches. Other frame depths available to match wall constructions. Exterior casing brickmould in WM180 pattern available. Optional frames in exterior grade red oak with matching brickmould. Optional rot resistant jambs.
SILL, SWING-IN, SWING OUT, SIDELITE OPTIONS	<p>Wide range of sill options: fixed threshold, adjustable threshold, and public access available in bronze, mill, satin nickel and brass finishes.</p> <p>Double-door models: double door available with both leaves active and locking astragal available.</p> <p>Sidelite options: flush-glazed or lite insert models, with embossed panel &amp; glass moldings, in 10 inch, 12-inch and 14-inch widths. Sidelite systems available with mullions separating doors from sidelites, and continuous sills and frame head, or as separately framed and cased units joined together.</p>
TRANSOM OPTIONS	Transom frames, either rectangular, elliptical or half round, match door frames and have matching exterior brickmould. Transom frames in primed pine or clear northern red oak to match door frame option. Low-E or etched insulated glass. Options for leaded decorative glass panel in air space between tempered glass panes with brass, brushed nickel or black nickel coming finishes.



# Fiber-Classic Door System Specifications

DOOR PANELS	Faces: 1/16-inch minimum thickness, proprietary fiberglass-reinforced thermoset composite, wood-grained in natural hardwood patterns, stainable and paintable. Door edges: machinable kiln-dried pine, primed, lock edge reinforced with engineered lumber core, lockset area reinforced with solid blocking for hardware backup. Door bottom edge: moisture- and decay-resistant composite. Core: foamed-in-place polyurethane, density 1.9 pcf minimum. Except where certification does not permit, standard factory sizes may be end trimmed in shop or field to suit replacement door size requirements.
OPTIONAL FACTORY-GLAZED GLASS OR GLASS INSERTS	<p>Factory-glazed: perimeter moldings flush with skin and made as integral part of skin. Glass minimum 1/8-inch tempered, two panes with sealed airspace between typically 3/8-inch. Options for grooved, etched, Low-E, or grille between glass (GBG). Optional removable wood grilles. Optional permanent external lite dividers.</p> <p>Inserts (lites): perimeter frames in raised-molding patterns, molded from composite, wood-grained in natural hardwood patterns, stainable or paintable, screw-fastened to doors, screw holes concealed with grained plugs in matching material. Tested to withstand high service temperatures resulting from exposure behind storm doors or dark finishes. Glass minimum 1/8-inch tempered, two panes with sealed airspace between, airspace typically 1/4-inch to 3/4-inch. Options for leaded decorative glass panel or wrought iron grille in air space between tempered glass panes with brass, brushed nickel or black nickel coming finishes. Wrought iron grille available in matte black only. Options for grooved, etched, Low-E, grille between glass (GBG), or mini-blinds. Optional removable wood grilles. Optional permanent external lite dividers.</p>
OPTIONAL DECORATIVE PANELS	Molded from composite, wood-grained in natural hardwood patterns, stainable or paintable, screw-fastened to doors, screw holes concealed with grained plugs in matching material.
GASKETING, WEATHERSTRIPPING	Jacketed thermoset open-cell foam, press-fit in kerfs at jamb stops in frames. Extruded thermoplastic elastomer, finned and chambered design, press-fit into bottom kerf of doors. Corner pads at bottom margin corners from jacketed thermoset open-cell foam.
HINGES, STRIKES, MULTI-POINT LOCKING SYSTEM	Steel, with a variety of finishes. Screws plated and finished to match hardware. Standard hinge size 4 x 4 x .098 inches. Strikes are proprietary adjustable type, permitting in-out adjustment of door in frame, up to 3/16 inch. Multi-point locking system is available in manual shootbolt or tongue versions.
FRAMES	Milled from 5/4 kiln-dried pine, profiled with 1/2-inch stop, standard depth 4-9/16 inches. Other frame depths available to match wall constructions. Exterior casing brickmould in WM180 pattern available. Optional frames in exterior grade red oak with matching brickmould. Optional rot resistant jambs.
SILL, SWING-IN, SWING OUT, SIDELITE OPTIONS	<p>Wide range of sill options: fixed threshold, adjustable threshold, and public access available in bronze, mill, satin nickel and brass finishes.</p> <p>Double-door models: double door available with both leaves active and locking astragal available.</p> <p>Sidelite options: flush-glazed or lite insert models, with embossed panel &amp; glass moldings, in 10 inch, 12-inch and 14-inch widths. Sidelite systems available with mullions separating doors from sidelites, and continuous sills and frame head, or as separately framed and cased units joined together.</p>
TRANSOM OPTIONS	Transom frames, either rectangular, elliptical or half round, match door frames and have matching exterior brickmould. Transom frames in primed pine or clear northern red oak to match door frame option. Clear, Low-E, or etched insulated glass. Options for leaded decorative glass panel or wrought iron grille in air space between tempered glass panes with brass, brushed nickel or black nickel coming finishes. Wrought iron grille available in matte black only.

# Smooth-Star Door System Specifications

DOOR PANELS	<p>Faces: 1/16-inch minimum thickness, proprietary fiberglass-reinforced thermoset composite, surface lightly textured, accepts most exterior and interior paints. Door edges: machinable kiln-dried pine, primed, lock edge reinforced with engineered lumber core, lockset area reinforced with solid blocking for hardware backup. Door bottom edge: moisture- and decay-resistant composite.</p> <p>Core: foamed-in-place polyurethane, density 1.9 pcf minimum. Except where certification does not permit, standard factory sizes may be end trimmed in shop or field to suit replacement door size requirements.</p>
OPTIONAL FACTORY-GLAZED GLASS OR GLASS INSERTS	<p>Factory-glazed: perimeter moldings flush with skin and made as integral part of skin. Glass minimum 1/8-inch tempered, two panes with sealed airspace between typically 3/8-inch to 1/2-inch. Options for grooved, etched, Low-E, or grille between glass (GBG). Optional removable wood grilles. Optional permanent external lite dividers.</p> <p>Inserts (lites): perimeter frames in raised-molding patterns, molded from composite, wood-grained in natural hardwood patterns, paintable, screw-fastened to doors, screw holes concealed with grained plugs in matching material. Tested to withstand high service temperatures resulting from exposure behind storm doors or dark finishes. Glass minimum 1/8-inch tempered, two panes with sealed airspace between, airspace typically 1/4-inch to 3/4-inch. Options for leaded decorative glass panel or wrought iron grille in air space between tempered glass panes with brass, brushed nickel or black nickel coming finishes. Wrought iron grille available in matte black only. Options for grooved, etched, Low-E, grille between glass (GBG), or mini-blinds. Optional removable wood grilles. Optional permanent external lite dividers.</p>
OPTIONAL DECORATIVE PANELS	Molded from proprietary fiberglass-reinforced composite, surface lightly textured, accepts most exterior and interior paints, fastened with very high bond tape.
GASKETING, WEATHERSTRIPPING	Jacketed thermoset open-cell foam, press-fit in kerfs at jamb stops in frames. Extruded thermoplastic elastomer, finned and chambered design, press-fit into bottom kerf of doors. Corner pads at bottom margin corners from jacketed thermoset open-cell foam.
HINGES, STRIKES, MULTI-POINT LOCKING SYSTEM	Steel, with a variety of finishes. Screws plated and finished to match hardware. Standard hinge size 4 x 4 x .098 inches. Strikes are proprietary adjustable type, permitting in-out adjustment of door in frame, up to 3/16 inch. Multi-point locking system is available in manual shootbolt or tongue versions.
FRAMES	Milled from 5/4 kiln-dried pine, profiled with 1/2-inch stop, standard depth 4-9/16 inches. Other frame depths available to match wall constructions. Exterior casing brickmould in WM180 pattern available. Optional frames in exterior grade red oak with matching brickmould. Optional rot resistant jambs.
SILL, SWING-IN, SWING OUT, SIDELITE OPTIONS	<p>Wide range of sill options: fixed threshold, adjustable threshold, and public access available in bronze, mill, satin nickel and brass finishes.</p> <p>Double-door models: double door available with both leaves active and locking astragal available.</p> <p>Sidelite options: flush-glazed or lite insert models, with embossed panel &amp; glass moldings, in 10 inch, 12-inch and 14-inch widths. Sidelite systems available with mullions separating doors from sidelites, and continuous sills and frame head, or as separately framed and cased units joined together.</p>
TRANSOM OPTIONS	Transom frames, either rectangular, elliptical or half round, match door frames and have matching exterior brickmould. Transom frames in primed pine or clear northern red oak to match door frame option. Clear, Low-E, or etched insulated glass. Options for leaded decorative glass panel or wrought iron grille in air space between tempered glass panes with brass, brushed nickel or black nickel coming finishes. Wrought iron grille available in matte black only.

# Profiles Insulated Steel Door System Specifications

DOOR PANELS	Faces: .021-inch (24 gauge) minimum thickness, tension-leveled cold rolled steel, zinc-coated, conversion-coated to permit paint bond. Door edges: machinable kiln-dried pine or engineered lumber mechanically locked to door faces, four-sided full thermal break provided. Lock area reinforced with solid blocking in full area of passage and deadbolt locksets. May be prepared for cylindrical or full-mortise locksets. Door bottom edge: moisture- and decay-resistant composite. Core: foamed-in-place polyurethane, density 1.9 pcf minimum. Door faces factory primed white.
OPTIONAL FACTORY-GLAZED GLASS OR GLASS INSERTS	Inserts (lites): perimeter frames in raised-molding patterns, molded from composite, wood-grained in natural hardwood patterns, paintable, screw-fastened to doors, screw holes concealed with grained plugs in matching material. Tested to withstand high service temperatures resulting from exposure behind storm doors or dark finishes. Glass minimum 1/8-inch tempered, two panes with sealed airspace between, airspace typically 1/4-inch to 3/4-inch. Options for leaded decorative glass panel or wrought iron grille in air space between tempered glass panes with brass, brushed nickel or black nickel coming finishes. Wrought iron grille available in matte black only. Options for grooved, etched, Low-E, grille between glass (GBG), or mini-blinds. Optional removable wood grilles. Optional permanent external lite dividers.
GASKETING, WEATHERSTRIPPING	Jacketed thermoset open-cell foam, press-fit in kerfs at jamb stops in frames. Extruded thermoplastic elastomer, finned and chambered design, press-fit into bottom kerf of doors. Corner pads at bottom margin corners from jacketed thermoset open-cell foam.
HINGES, STRIKES, MULTI-POINT LOCKING SYSTEM	Steel, with a variety of finishes. Screws plated and finished to match hardware. Standard hinge size 4 x 4 x .098 inches. Strikes are proprietary adjustable type, permitting in-out adjustment of door in frame, up to 3/16 inch. Multi-point locking system is available in manual shootbolt or tongue versions.
FRAMES	Milled from 5/4 kiln-dried pine, profiled with 1/2-inch stop, standard depth 4-9/16 inches. Other frame depths available to match wall constructions. Exterior casing brickmould in WM180 pattern available. Optional frames in exterior grade red oak with matching brickmould. Optional rot resistant jambs.
SILL, SWING-IN, SWING OUT, SIDELITE OPTIONS	Wide range of sill options: fixed threshold, adjustable threshold, and public access available in bronze, mill, satin nickel and brass finishes.  Double-door models: double door available with both leaves active and locking astragal available.  Sidelite options: flush-glazed or lite insert models, with embossed panel & glass moldings, in 10 inch, 12-inch and 14-inch widths. Sidelite systems available with mullions separating doors from sidelites, and continuous sills and frame head, or as separately framed and cased units joined together.
TRANSOM OPTIONS	Transom frames, either rectangular, elliptical or half round, match door frames and have matching exterior brickmould. Transom frames in primed pine or clear northern red oak to match door frame option. Clear, Low-E, or etched insulated glass. Options for leaded decorative glass panel or wrought iron grille in air space between tempered glass panes with brass, brushed nickel or black nickel coming finishes. Wrought iron grille available in matte black only.

# **Traditions Series Steel Door System Specifications**

DOOR PANELS	Faces: .018-inch (25 gauge) minimum thickness, tension-leveled cold rolled steel, zinc-coated, conversion-coated to permit paint bond. Door edges: machinable kiln-dried pine or engineered lumber mechanically locked to door faces, four-sided full thermal break provided. Lock area reinforced with solid blocking in area of passage and deadbolt locksets. May be prepared for cylindrical or full-mortise locksets. Door bottom edge: moisture- and decay-resistant composite. Core: foamed-in-place polyurethane, density 1.9 pcf minimum. Door faces factory primed white.
OPTIONAL FACTORY-GLAZED GLASS OR GLASS INSERTS	Inserts (lites): perimeter frames in raised-molding patterns, molded from composite, wood-grained in natural hardwood patterns, paintable, screw-fastened to doors, screw holes concealed with grained plugs in matching material. Tested to withstand high service temperatures resulting from exposure behind storm doors or dark finishes. Glass minimum 1/8-inch tempered, two panes with sealed airspace between, airspace typically 1/4-inch to 3/4-inch. Options for leaded decorative glass panel or wrought iron grille in air space between tempered glass panes with brass, brushed nickel or black nickel coming finishes. Wrought iron grille available in matte black only. Options for grooved, etched, Low-E, grille between glass (GBG), or mini-blinds. Optional removable wood grilles. Optional permanent external lite dividers.
GASKETING, WEATHERSTRIPPING	Jacketed thermoset open-cell foam, press-fit in kerfs at jamb stops in frames. Extruded thermoplastic elastomer, finned and chambered design, press-fit into bottom kerf of doors. Corner pads at bottom margin corners from jacketed thermoset open-cell foam.
HINGES, STRIKES, MULTI-POINT LOCKING SYSTEM	Steel, with a variety of finishes. Screws plated and finished to match hardware. Standard hinge size 4 x 4 x .098 inches. Strikes are proprietary adjustable type, permitting in-out adjustment of door in frame, up to 3/16 inch. Multi-point locking system is available in manual shootbolt or tongue versions.
FRAMES	Milled from 5/4 kiln-dried pine, profiled with 1/2-inch stop, standard depth 4-9/16 inches. Other frame depths available to match wall constructions. Exterior casing brickmould in WM180 pattern available. Optional frames in exterior grade red oak with matching brickmould. Optional rot resistant jambs.
SILL, SWING-IN, SWING OUT, SIDELITE OPTIONS	Wide range of sill options: fixed threshold, adjustable threshold, and public access available in bronze, mill, satin nickel and brass finishes.  Double-door models: double door available with both leaves active and locking astragal available.  Sidelite options: flush-glazed or lite insert models, with embossed panel & glass moldings, in 10 inch, 12-inch and 14-inch widths. Sidelite systems available with mullions separating doors from sidelites, and continuous sills and frame head, or as separately framed and cased units joined together.
TRANSOM OPTIONS	Transom frames, either rectangular, elliptical or half round, match door frames and have matching exterior brickmould. Transom frames in primed pine or clear northern red oak to match door frame option. Clear, Low-E, or etched insulated glass. Options for leaded decorative glass panel or wrought iron grille in air space between tempered glass panes with brass, brushed nickel or black nickel coming finishes. Wrought iron grille available in matte black only.