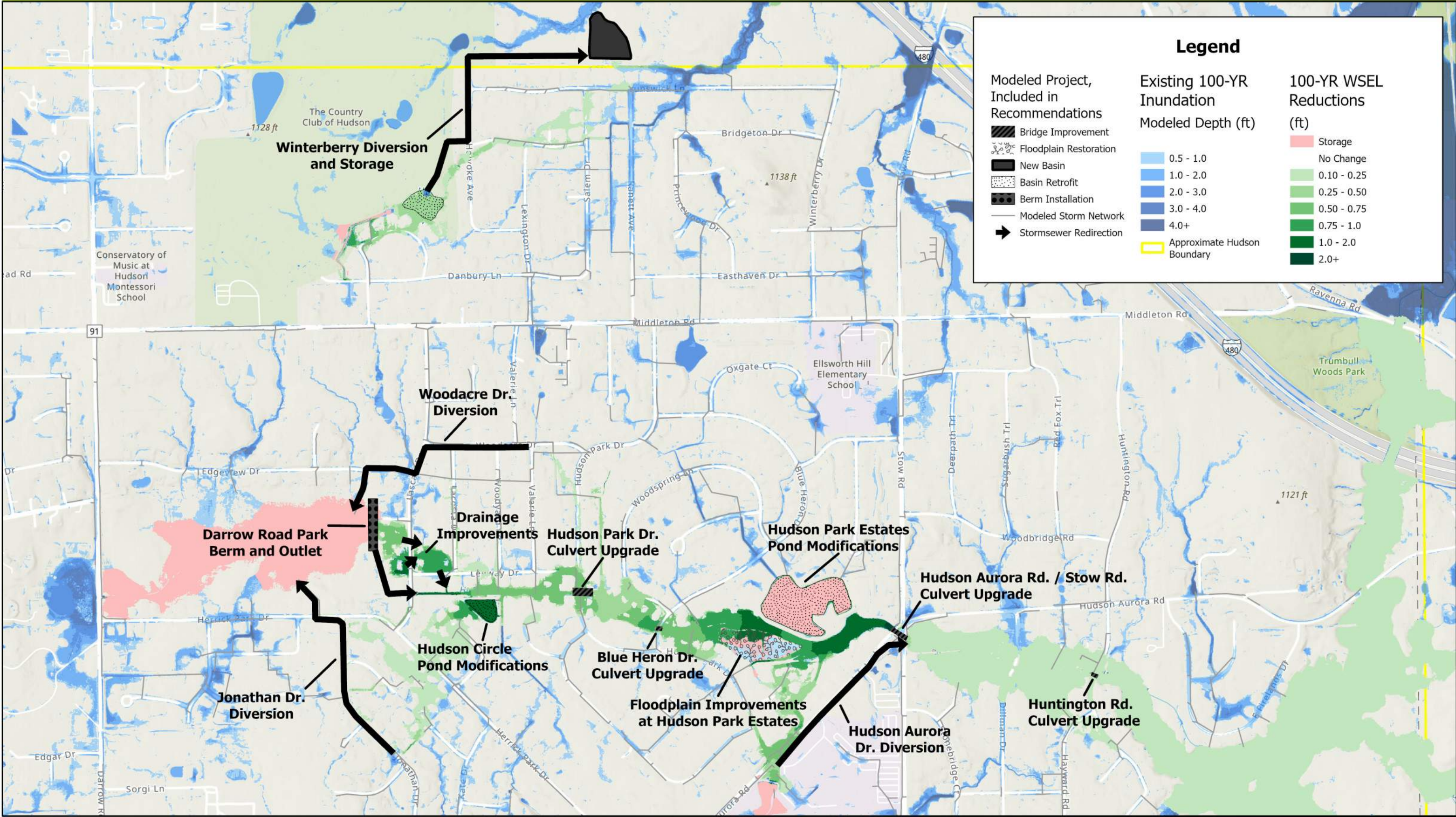


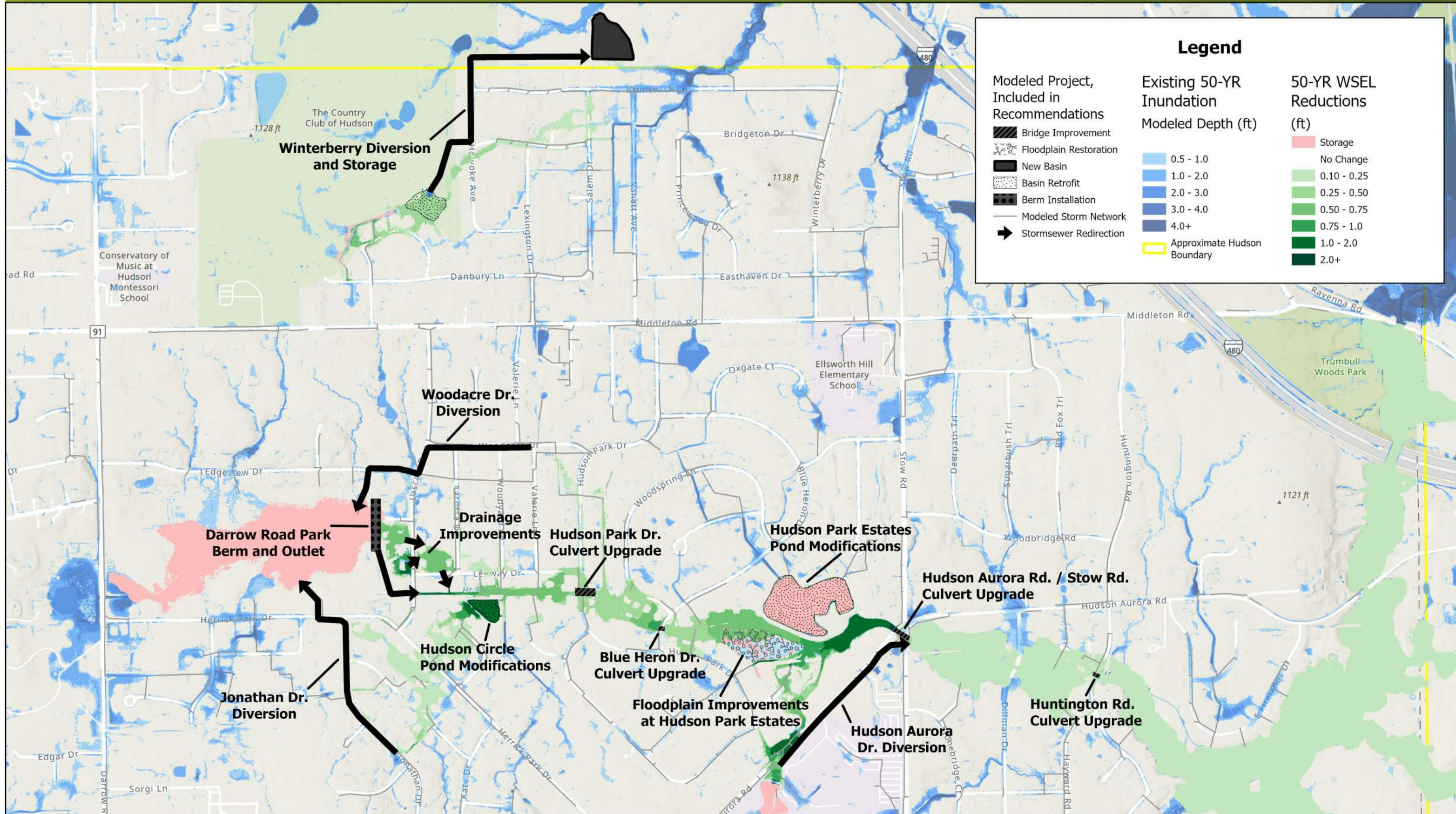
Legend

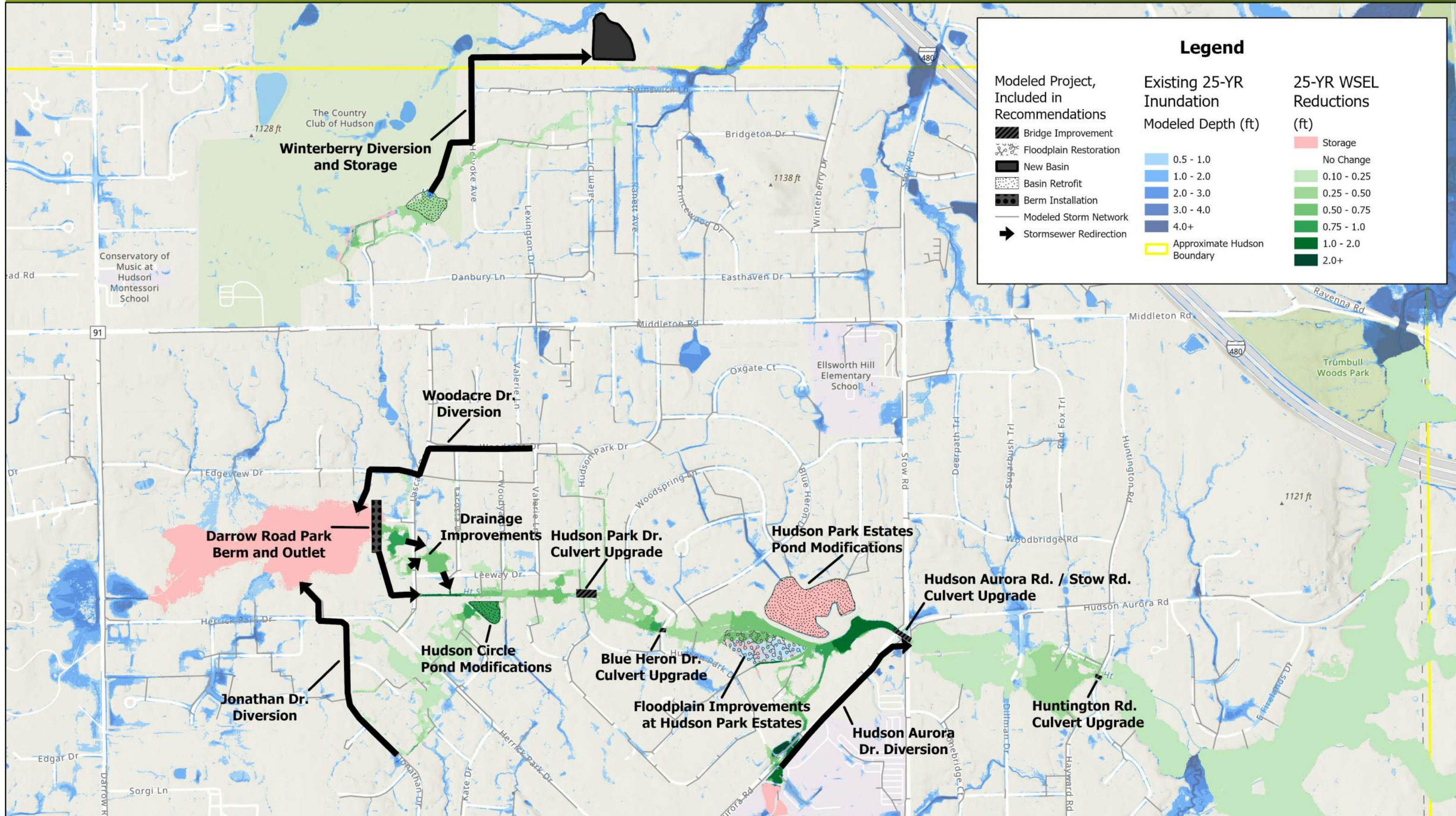
| Modeled Project, Included in Recommendations | | Existing 100-YR Inundation Modeled Depth (ft) | |
|--|---|---|-------------------------|
| | Bridge Improvement | | 0.5 - 1.0 |
| | Floodplain Restoration | | 1.0 - 2.0 |
| | New Basin | | 2.0 - 3.0 |
| | Basin Retrofit | | 3.0 - 4.0 |
| | Berm Installation | | 4.0+ |
| | Stormsewer Redirection | | City of Hudson Boundary |
| | 100-YR Structures at Risk (>0.5 FT Depth) | | |
| | Modeled Storm Network | | |

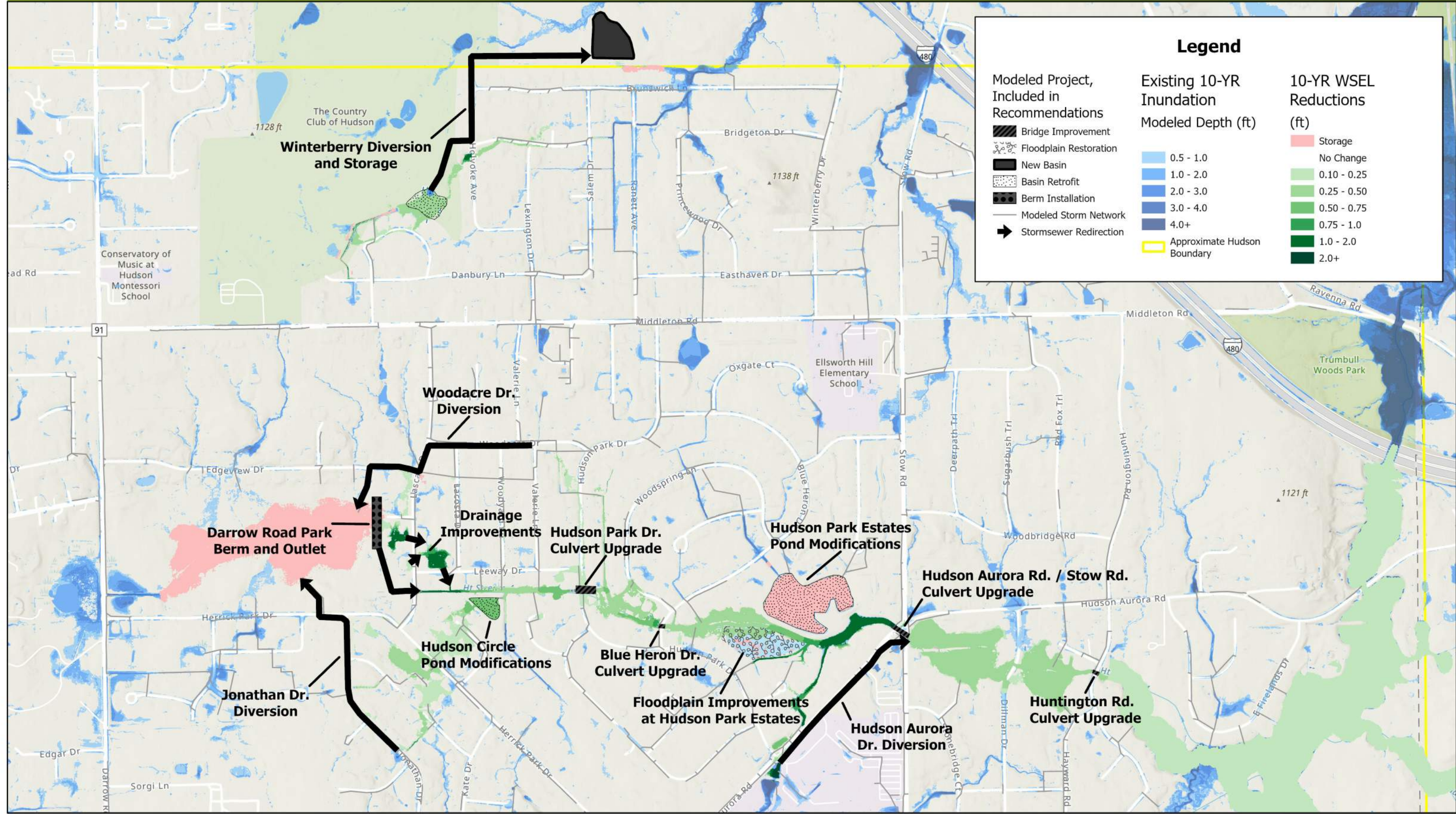


Legend

| | | |
|---|--|------------------------------------|
| Modeled Project, Included in Recommendations | Existing 100-YR Inundation Modeled Depth (ft) | 100-YR WSEL Reductions (ft) |
| Bridge Improvement | 0.5 - 1.0 | Storage |
| Floodplain Restoration | 1.0 - 2.0 | No Change |
| New Basin | 2.0 - 3.0 | 0.10 - 0.25 |
| Basin Retrofit | 3.0 - 4.0 | 0.25 - 0.50 |
| Berm Installation | 4.0+ | 0.50 - 0.75 |
| Modeled Storm Network | Approximate Hudson Boundary | 0.75 - 1.0 |
| Stormsewer Redirection | | 1.0 - 2.0 |
| | | 2.0+ |







Legend

| Modeled Project, Included in Recommendations | Existing 10-YR Inundation Modeled Depth (ft) | 10-YR WSEL Reductions (ft) |
|--|--|----------------------------|
| Bridge Improvement | 0.5 - 1.0 | Storage |
| Floodplain Restoration | 1.0 - 2.0 | No Change |
| New Basin | 2.0 - 3.0 | 0.10 - 0.25 |
| Basin Retrofit | 3.0 - 4.0 | 0.25 - 0.50 |
| Berm Installation | 4.0+ | 0.50 - 0.75 |
| Modeled Storm Network | Approximate Hudson Boundary | 0.75 - 1.0 |
| Stormsewer Redirection | | 1.0 - 2.0 |
| | | 2.0+ |