



SR 303 8" Water Service Connection

September 9, 2025

Girl Scouts of North East Ohio (GSNEO) & Hudson Community Impact

About GSNEO

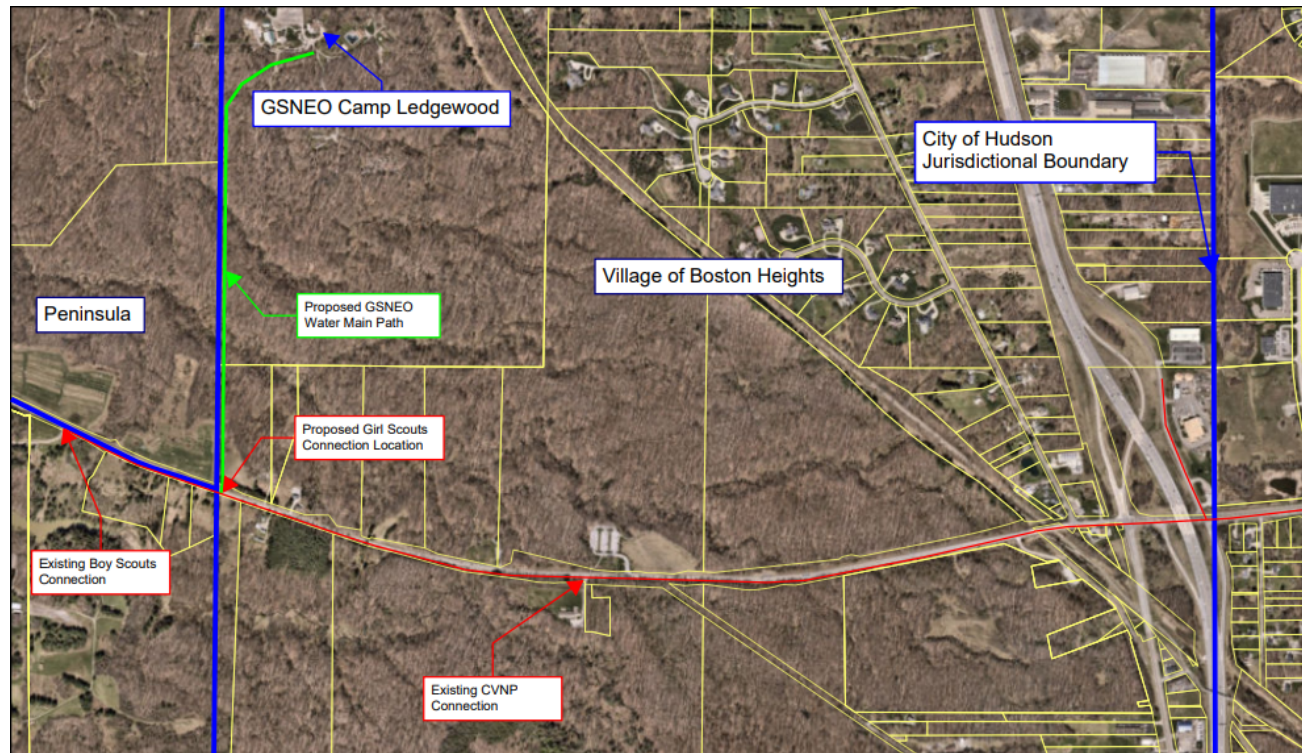
- ▶ Girl Scouts of North East Ohio, building girls of courage, confidence, and character for 110 years
- ▶ Serves 18 counties in Northeast Ohio
- ▶ Nearly 19,000 girls and 8,000 volunteers

Hudson Engagement

- ▶ Hudson High School reserves GSNEO camp twice yearly
- ▶ 365 girls in 35 troops
- ▶ 314 Reside within the City of Hudson
- ▶ 161 active volunteers
- ▶ New Vivian Von Gruenigen STEM Center of Excellence
 - Expected to be a popular destination for Hudson Schools



Vicinity Map / Political Boundary



Current Conditions

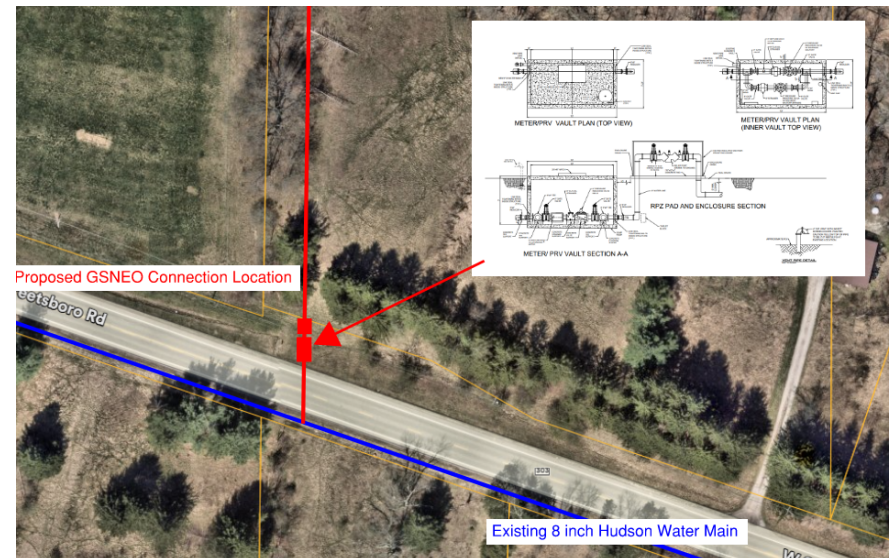
- ▶ GSNEO uses 9,000-12,000 gallons per day with a max day demand of 20,000 gallons (14 gallons per minute gpm)
- ▶ Fire flow demand of 500 gpm (Existing GSNEO fire pump)
- ▶ 2023 – 2024 GSNEO experienced a drop in well production
- ▶ GSNEO has been pursuing a reliable and cost-effective water source for over 11 years
 - Cuyahoga Falls – Not cost effective
 - Peninsula – No source – Working with CWD and Summit County
 - Stow – Not cost effective
 - Boston Heights / Cleveland – Denied service
 - New Well – Quality and quantity issues
- ▶ Support for Hudson Connection
 - August 4th Cuyahoga Valley National Park provided project approval to move forward
 - August 26th Boy Scouts provided support letter



Request Water Supply From City of Hudson

The GSNEO humbly request the opportunity to connect to the City of Hudson water system.

- ▶ Install a meter, pressure reducer, backflow preventer, and 8-inch connection to the existing Hudson water main along W Streetsboro Road.
- ▶ Vault and connection shall be completed according to City of Hudson specifications
- ▶ Expected average day flow of 6-8 gpm with a typical peak of 14 gpm and instantaneous peak of 49 gpm.
- ▶ Fire protection of 500 gpm



verdantas

Question & Answer