

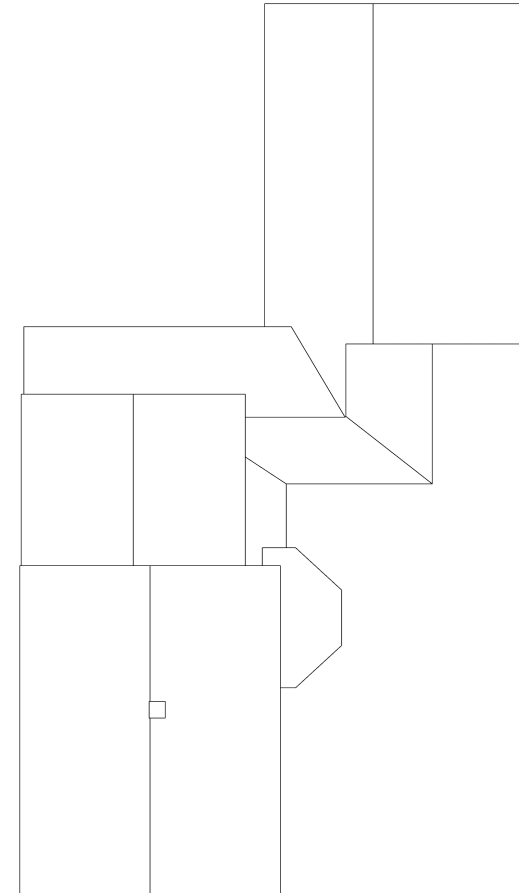


VIEW 3D MODEL



Roof	Area	Total	Length
Roof Facets	2798 ft ²	14	-
Ridges / Hips	-	8	108' 6"
Valleys	-	2	17' 6"
Rakes	-	12	138' 4"
Eaves	-	24	264' 10"
Flashing	-	11	60' 4"
Step Flashing	-	12	47' 9"
Drip Edge/Perimeter	-	-	403' 2"

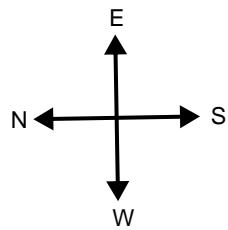
Roof Pitch*	Area	Percentage
6 / 12	2438 ft ²	87.13%
4 / 12	282 ft ²	10.08%
0 / 12	78 ft ²	2.79%



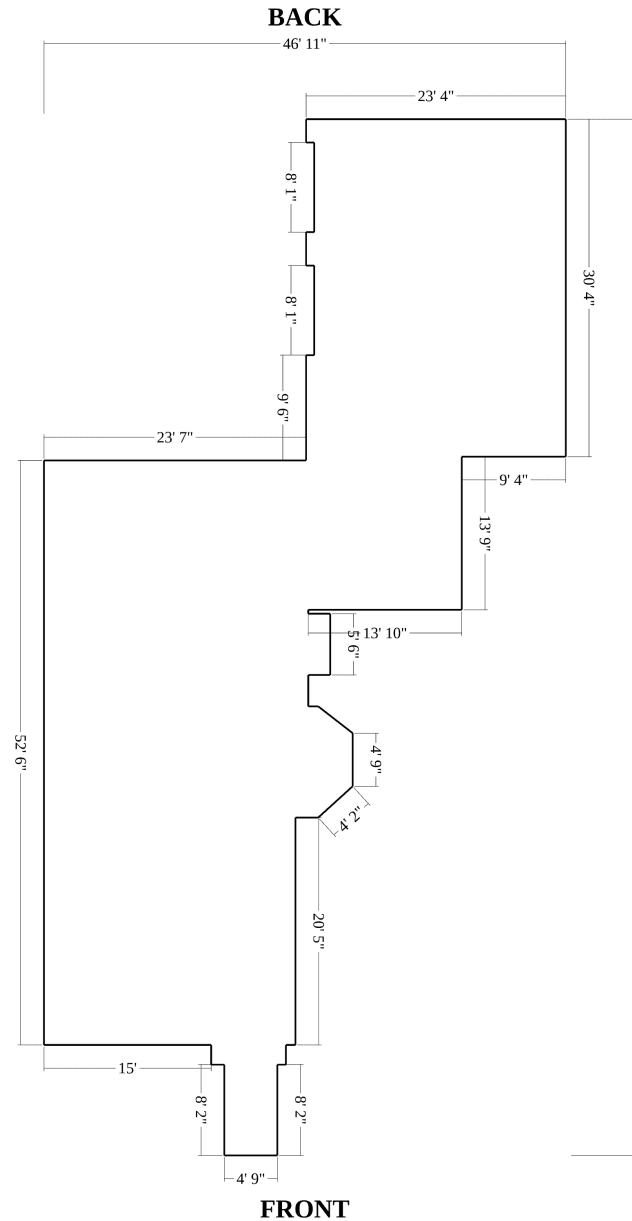
Example Waste Factor Calculations

	Zero Waste	+5%	+10%	+15%	+20%
Area	2798 ft ²	2938 ft ²	3078 ft ²	3218 ft ²	3358 ft ²
Squares	28	29 ² / ₃	31	32 ¹ / ₃	33 ² / ₃

The table above provides the total roof area of a given property using waste percentages as noted. Please consider that area values and specific waste factors can be influenced by the size and complexity of the property, captured image quality, specific roofing techniques, and your own level of expertise. Additional square footage for Hip, Ridge, and Starter shingles are not included in this waste factor and will require additional materials. This table is only intended to make common waste calculations easier and should not be interpreted as recommendations.



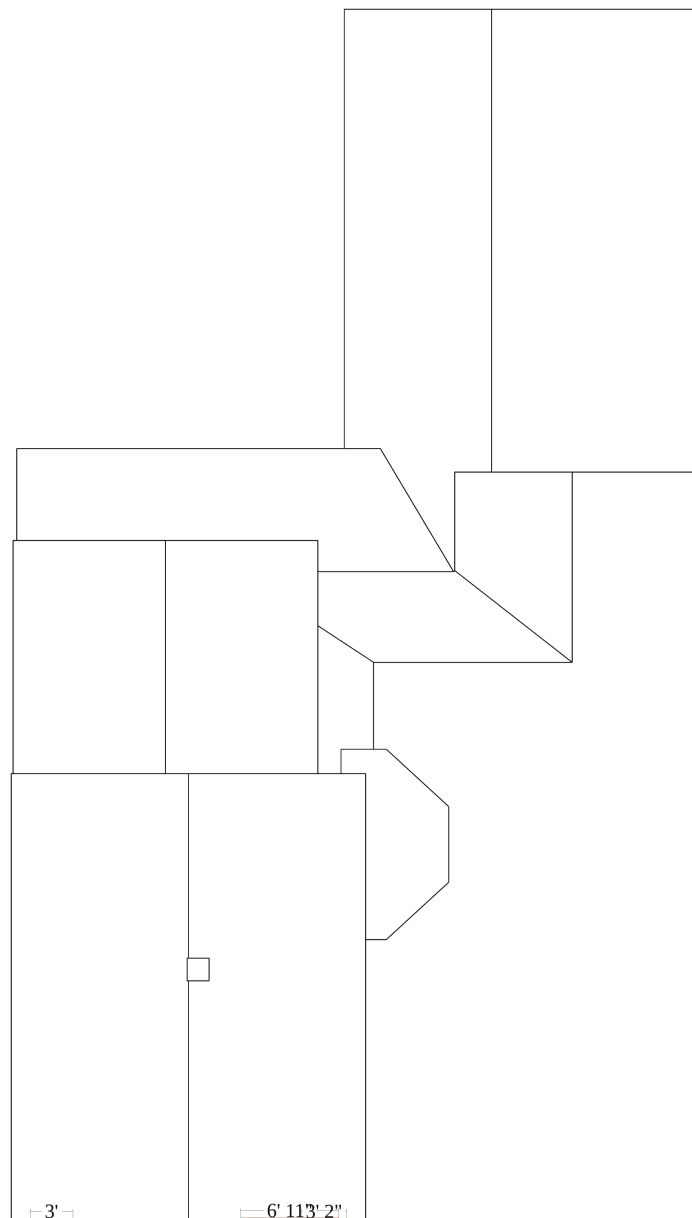
Number of Stories: > 1
Footprint Perimeter: 291' 8"
Footprint Area: 2205 ft²





	Cornice Returns	Length	Count
■	Returns Story 2	6'	2
	Total	6'	2

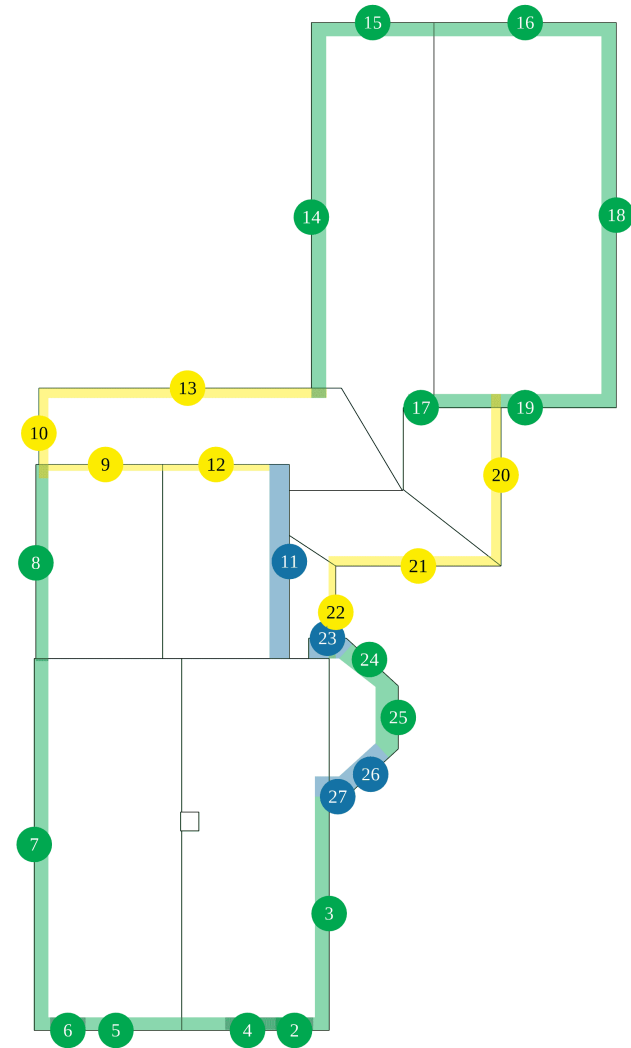
	Cornice Strips	Length	Count
■	Strips Story 1	7'	1
	Total	7'	1





Soffit Summary

Depth	Type	Count	Total Length	Total Area
6" - 12"	rakes	3	28' 11"	18 ft ²
	eaves	4	59' 10"	48 ft ²
12" - 18"	rakes	6	73' 9"	85 ft ²
	eaves	10	151' 9"	191 ft ²
18" - 24"	eaves	4	26' 6"	48 ft ²
Totals			340' 9"	389 ft²





Soffit Breakdown

	num	Type	Depth	Length	Area	Pitch
Ø	1	eave	13"	6' 11"	7 ft ²	0 / 12
●	2	eave	13"	3' 4"	4 ft ²	0 / 12
●	3	eave	14"	19' 10"	24 ft ²	6 / 12
●	4	rake	13"	12' 6"	14 ft ²	6 / 12
●	5	rake	13"	12' 6"	14 ft ²	6 / 12
●	6	eave	13"	3' 2"	4 ft ²	0 / 12
●	7	eave	14"	31' 7"	38 ft ²	6 / 12
●	8	eave	14"	16' 8"	20 ft ²	6 / 12
●	9	rake	6"	10' 10"	6 ft ²	6 / 12
●	10	rake	10"	8'	7 ft ²	4 / 12
●	11	eave	23"	16' 5"	31 ft ²	6 / 12
●	12	rake	6"	10' 1"	5 ft ²	6 / 12
●	13	eave	10"	23' 7"	20 ft ²	4 / 12
●	14	eave	15"	30' 8"	39 ft ²	6 / 12
●	15	rake	14"	11' 10"	14 ft ²	6 / 12
●	16	rake	14"	17' 3"	20 ft ²	6 / 12
●	17	rake	14"	2' 6"	3 ft ²	6 / 12
●	18	eave	15"	30' 4"	38 ft ²	6 / 12
●	19	rake	14"	17' 3"	20 ft ²	6 / 12

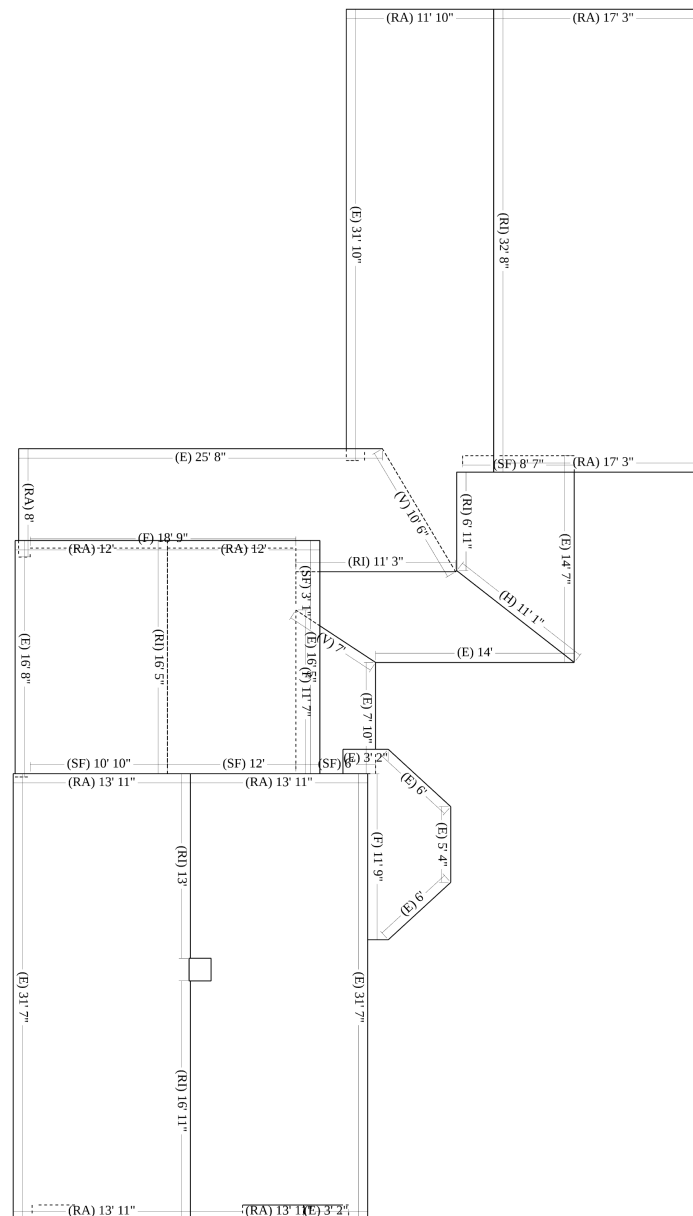
	num	Type	Depth	Length	Area	Pitch
●	20	eave	10"	13' 9"	11 ft ²	6 / 12
●	21	eave	10"	14' 8"	12 ft ²	6 / 12
●	22	eave	7"	7' 10"	5 ft ²	4 / 12
●	23	eave	20"	3' 2"	6 ft ²	0 / 12
●	24	eave	16"	3' 11"	6 ft ²	0 / 12
●	25	eave	16"	5' 4"	12 ft ²	0 / 12
●	26	eave	20"	4' 2"	7 ft ²	0 / 12
●	27	eave	20"	2' 8"	5 ft ²	0 / 12

Ø Feature is too small to label on the plan diagram



Roof	Length
Ridges (RI)	97' 3"
Hips (H)	11' 3"
Valleys (V)	17' 6"
Rakes (RA)	138' 4"
Eaves (E)	264' 10"
Flashing (F)*	60' 4"
Step Flashing (SF)*	47' 9"
Transition Line (TL)	-

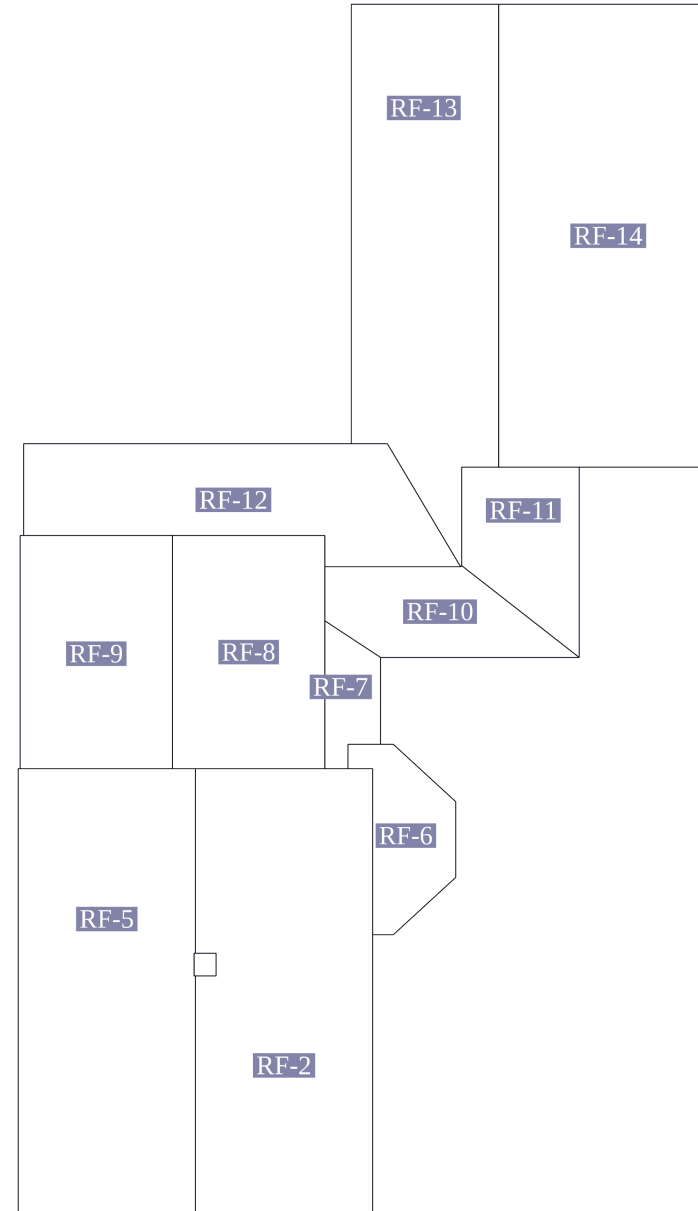
*Please view the 3D model for more detail (e.g. flashing, step flashing and some other roof lines may be difficult to see on the PDF)





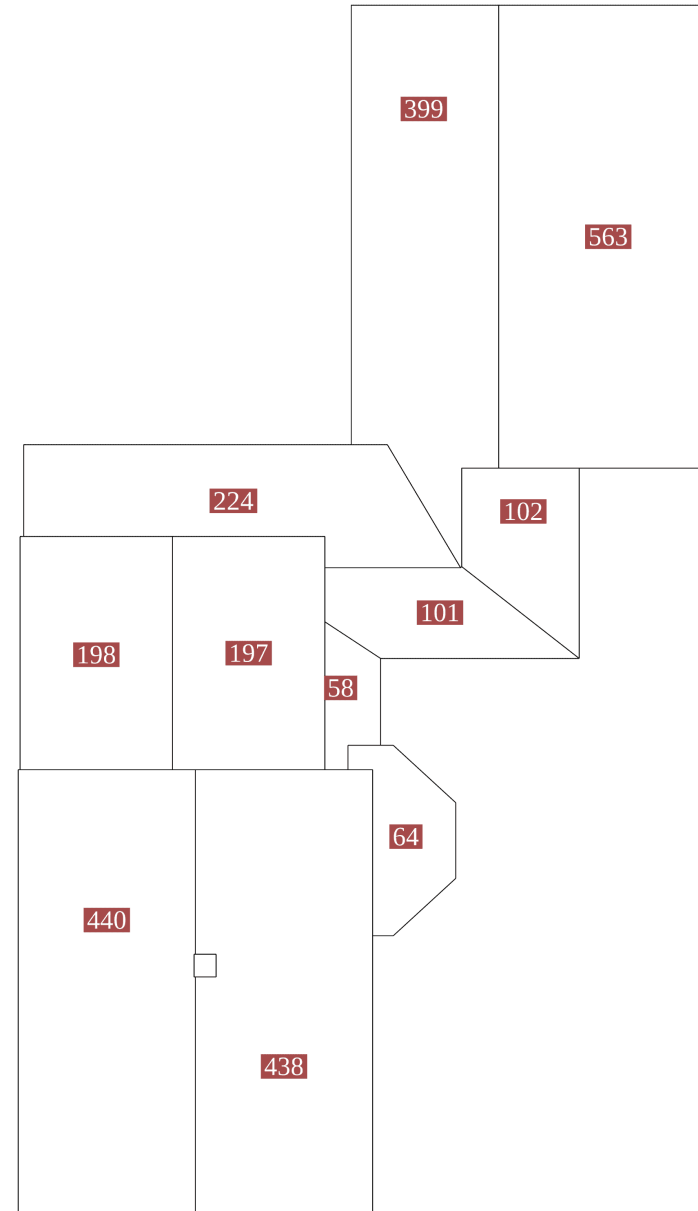
Roof Facets

Facet	Area	Pitch
RF-1	7 ft ²	0/12
RF-2	438 ft ²	6/12
RF-3	4 ft ²	0/12
RF-4	3 ft ²	0/12
RF-5	440 ft ²	6/12
RF-6	64 ft ²	0/12
RF-7	58 ft ²	4/12
RF-8	197 ft ²	6/12
RF-9	198 ft ²	6/12
RF-10	101 ft ²	6/12
RF-11	102 ft ²	6/12
RF-12	224 ft ²	4/12
RF-13	399 ft ²	6/12
RF-14	563 ft ²	6/12



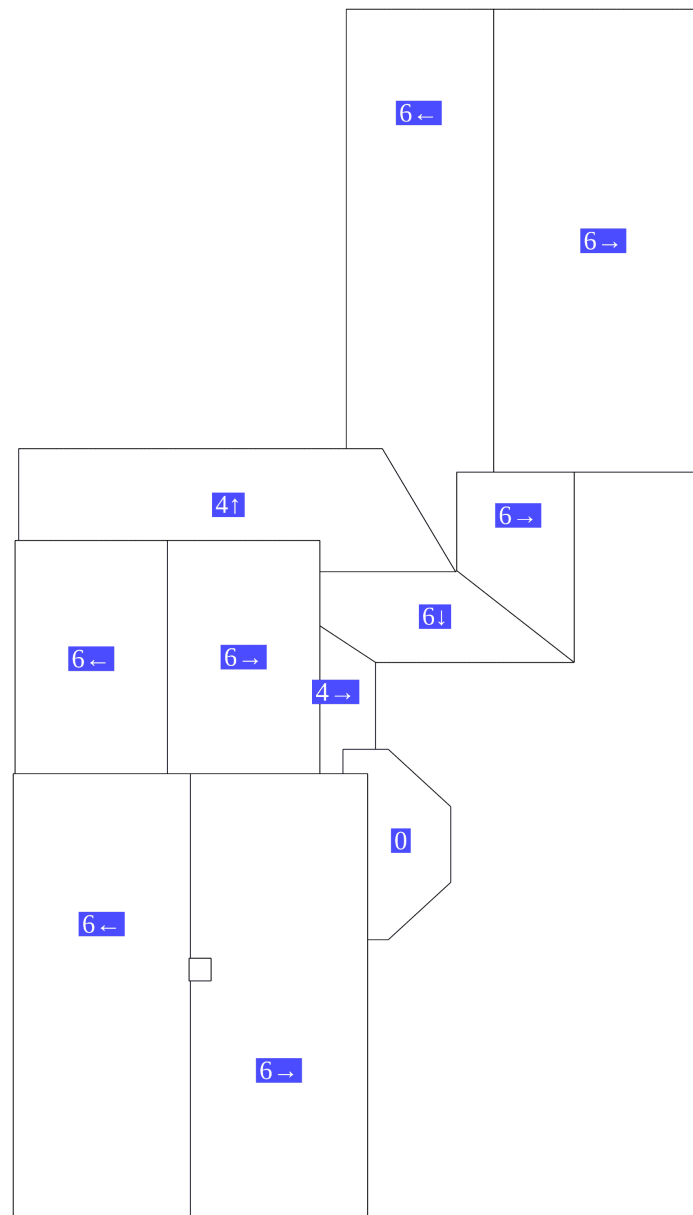


Roof	Facets	Total
Total	14	2798 ft ²





Roof Pitch	Area	Percentage
6 / 12	2438 ft ²	87.13%
4 / 12	282 ft ²	10.08%
0 / 12	78 ft ²	2.79%







Nancy Domeck



Material Order

DELIVERY ADDRESS

257 North Main Street
Hudson, OH 44236

BILLING

Roofsmith - Akron
samo+neo@roof-smith.com
122 Western Avenue Akron
OH 44313

CONTACT

Sam Odmark
Roofsmith - Akron
T:

Retail_roof

Duration - Gold Package

ITEM	VARIANT/SKU	QUANTITY	AMOUNT
Tri-Built SA Plybase 0.64 SQ + 10% = 0.70 SQ	2 SQ. Roll	1 RL	\$ 122.35 \$ 122.35/RL
Tri-Built SA Cap Sheet 0.64 SQ + 10% = 0.70 SQ	39-3/8" x 32' 11" - 1 SQ. Roll - Moire Black	1 RL	\$ 110.00 \$ 110.00/RL
Owens Corning TruDefinition Duration 27.2 SQ + 10% = 29.92 SQ	Onyx Black	90 BDL	\$ 3738.60 \$ 41.54/BDL
Duration - Gold Package (Onyx Black, Estate Gray, Driftwood, Brownwood and Teak) ONLY			
OC ProEdge® Hip & Ridge 108.51 LF + 10% = 119.36 LF	Onyx Black	4 BDL	\$ 288.92 \$ 72.23/BDL
Tri-Built Starter Shingle 385.69 + 10% = 424.26	7-3/4"	5 BDL	\$ 196.65 \$ 39.33/BDL
Tri-Built - Sand Surface Self-Adhering Ice & Water Underlayment 607.14 + 10% = 667.85	2 SQ. Roll	11 RL	\$ 650.65 \$ 59.15/RL
Owens Corning - RhinoRoof - 42" x 286' U20 Synthetic Roofing	42" x 286' U20 Synthetic	2 RL	\$ 155.56

Underlayment - Roofsmith Restoration - 10 SQ. Roll 13.29 SQ + 10% = 14.61 SQ	Roofing Underlayment - Roofsmith Restoration - 10 SQ. Roll		\$ 77.78/RL
Coil Ring Shank Roofing Nails 27.2 SQ	1-1/4"	2 EA	\$ 108.00 \$ 54.00/EA
TRI-BUILT 1-1/4" Plastic Cap Nails 27.2 SQ	1" - Carton of 2,000	2 CTN	\$ 35.90 \$ 17.95/CTN
TRI-BUILT 1-1/2" x 10' Premium Drip Edge 385.69 LF + 12% = 431.97 LF	White	44 PC	\$ 284.24 \$ 6.46/PC
Pre-Bent Aluminum Step Flashing 47.75 LF	Black - 3" x 8" - Bundle of 100	1 BDL	\$ 32.95 \$ 32.95/BDL
All Weather Roofing & Construction Sealant	Black	6 TB	\$ 43.44 \$ 7.24/TB
Rolled Roofing - Quick Dry Asphalt Spray Primer 0.64 SQ	17 Oz. Aerosol Can	1 EA	\$ 13.11 \$ 13.11/EA
Zipper Boot - Electrical Mast Roof Flashing	Mast Flashing	1 EA	\$ 44.88 \$ 44.88/EA
4-N-1 Aluminum Flashing (Pipe Boot)	Black	2 PC	\$ 27.96 \$ 13.98/PC
OC VentSure® Heat and Moisture Ridge Vent 4' Strip 40 LF	VS4W 4' VentSure® Heat and Moisture Ridge Vent Strip with Weather Protector Moisture Barrier	10 PC	\$ 113.80 \$ 11.38/PC
OC VentSure® Heat and Moisture Ridge Vent 4' Strip 60 LF	VS4W 4' VentSure® Heat and Moisture Ridge Vent Strip with Weather Protector Moisture Barrier	15 PC	\$ 170.70 \$ 11.38/PC
Eliminate Vent - 8" Smart Plug™ Roof Patch	8" Smart Plug™ Roof Patch	2 EA	\$ 27.78 \$ 13.89/EA
Trim Coil - Roofing Flashing	24" x 50' - Black(216)	1 EA	\$ 107.00 \$ 107.00/EA
ITEM	VARIANT/SKU	QUANTITY	AMOUNT
Trim Coil - Roofing Flashing	24" x 50' - Dover White (203)	2 EA	\$ 214.00 \$ 107.00/EA

Subtotal	\$ 6486.49
Sales tax	\$ 470.44
Total Cost:	\$ 6956.93