

TYRE DRIVE (50' RW)

$R=299.756'$   
 $A=256.355'$

10' UTILITY ESMT.

CONC. DW

2 STORY  
FRAME  
RES. #2380

49.1'

24'

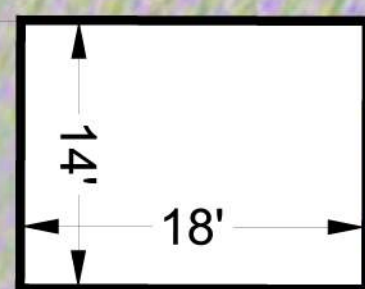
42'

24.2'

28.2'

0.9'

4'-7"



30'

WOOD  
DECK

20'

16'

13'

41.0'

36.6'±

200.00'

50' S/B

5' UTILITY ESMT.

147.702'

LOT 114

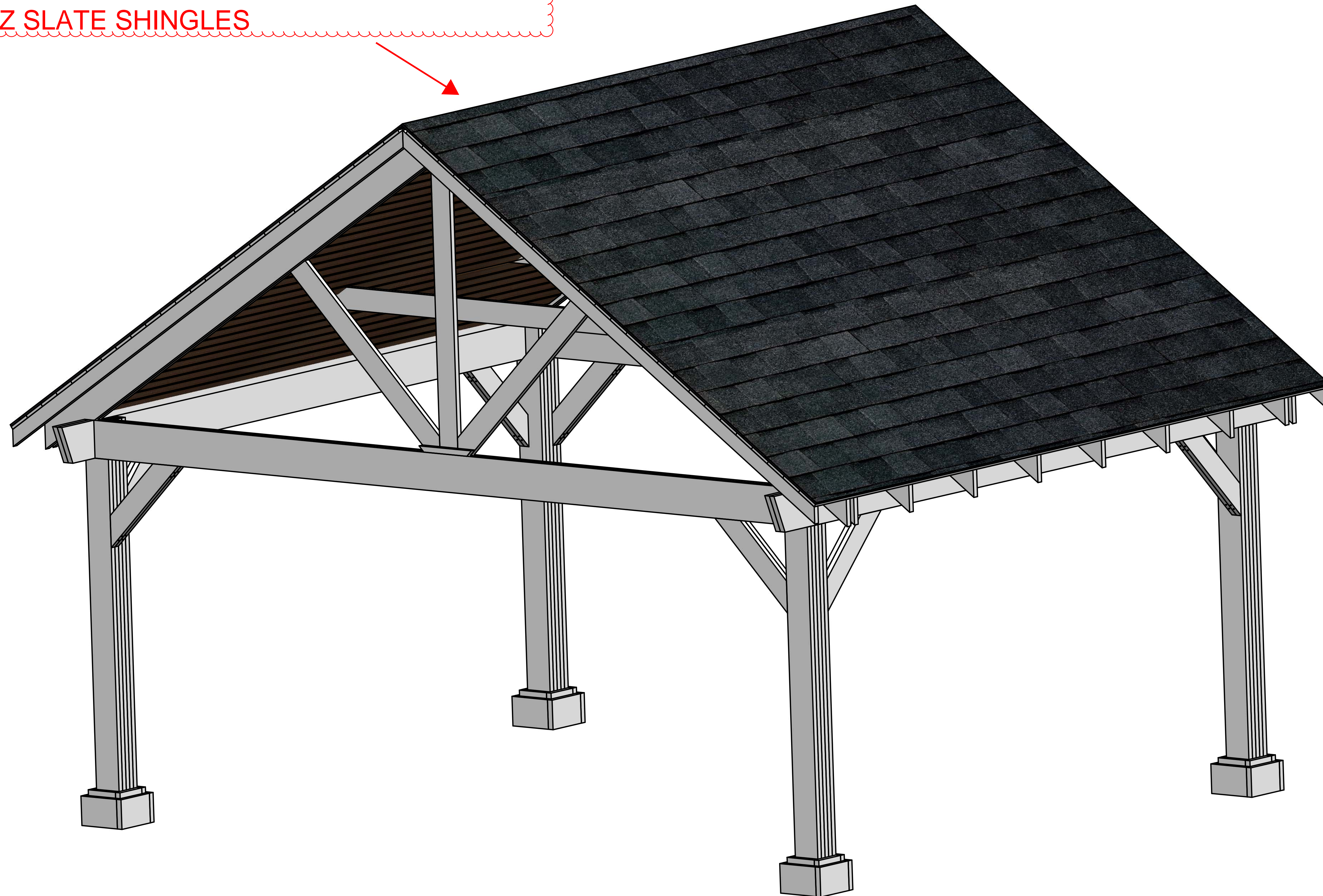
10' UTILITY ESMT.

114.757'

5' UTILITY ESMT.



Color and material matching the proposed roof  
to match the house which is GAF TIMBERLINE  
HDZ SLATE SHINGLES



BERLIN  
GARDENS  
TAKE LIFE OUTDOORS™

VALLEY  
CITY SUPPLY

LASTING IMPRESSIONS  
LANDSCAPE & DESIGN

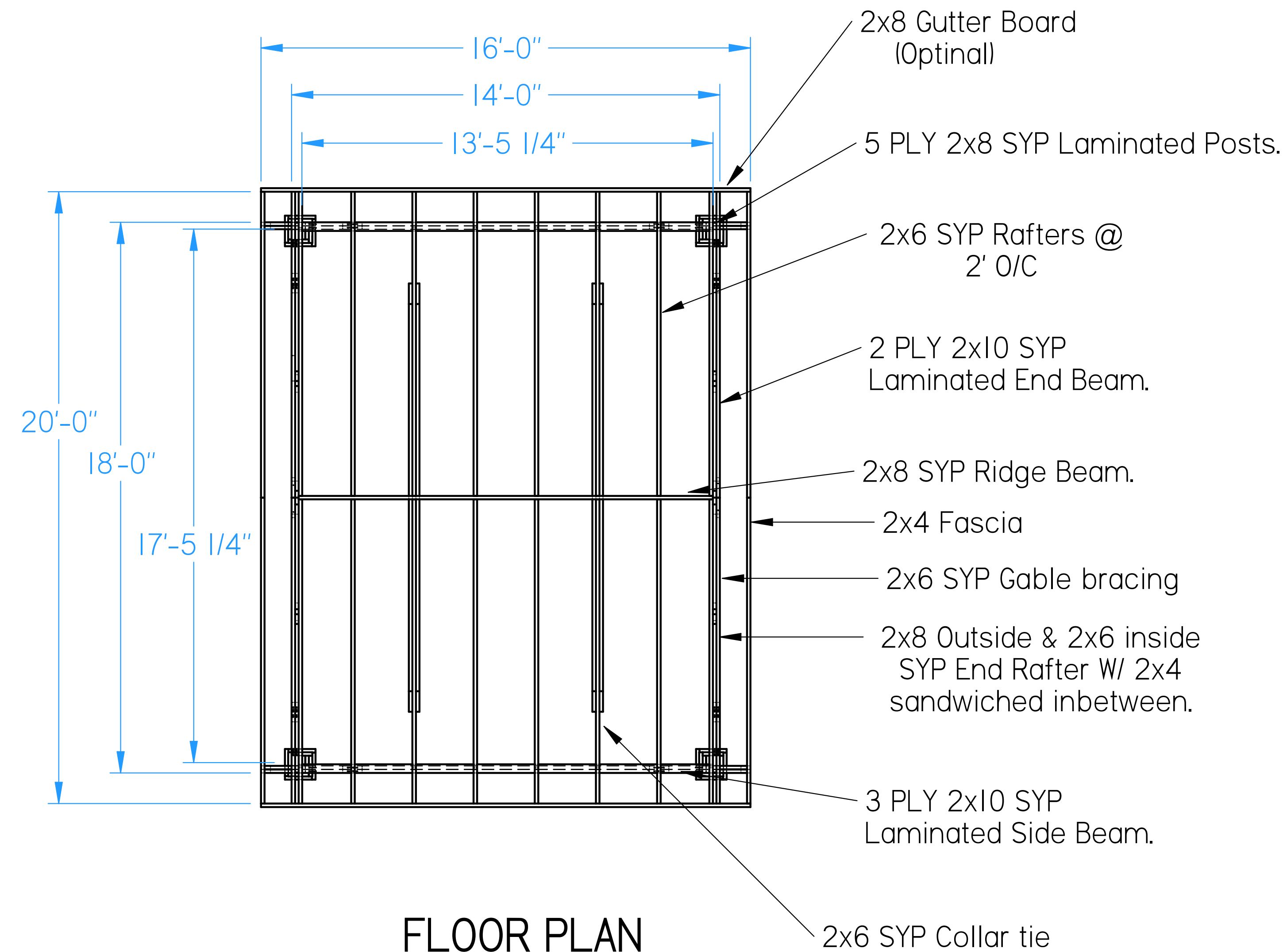
Breckenridge Pavilion  
18x14 W/ Ceiling

DRAWN BY: marvin.s

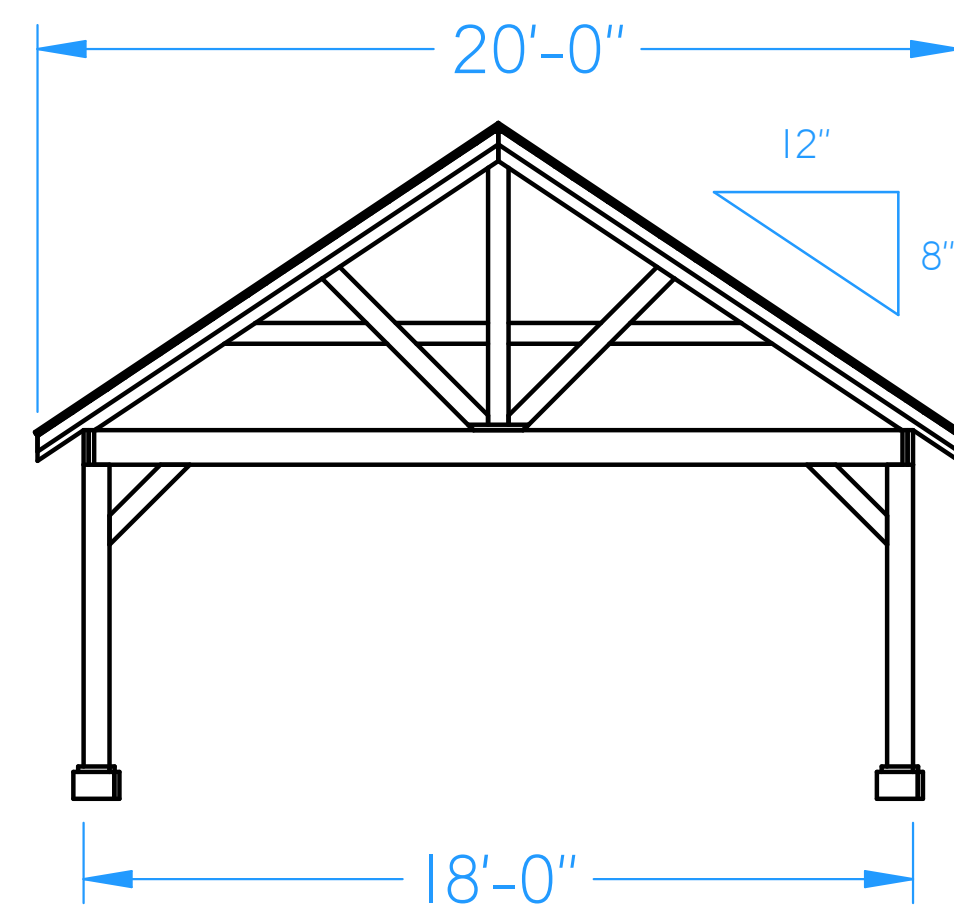
DATE: 3/20/25

PROJECT:  
Breckenridge  
Pavilion 18x14.dft

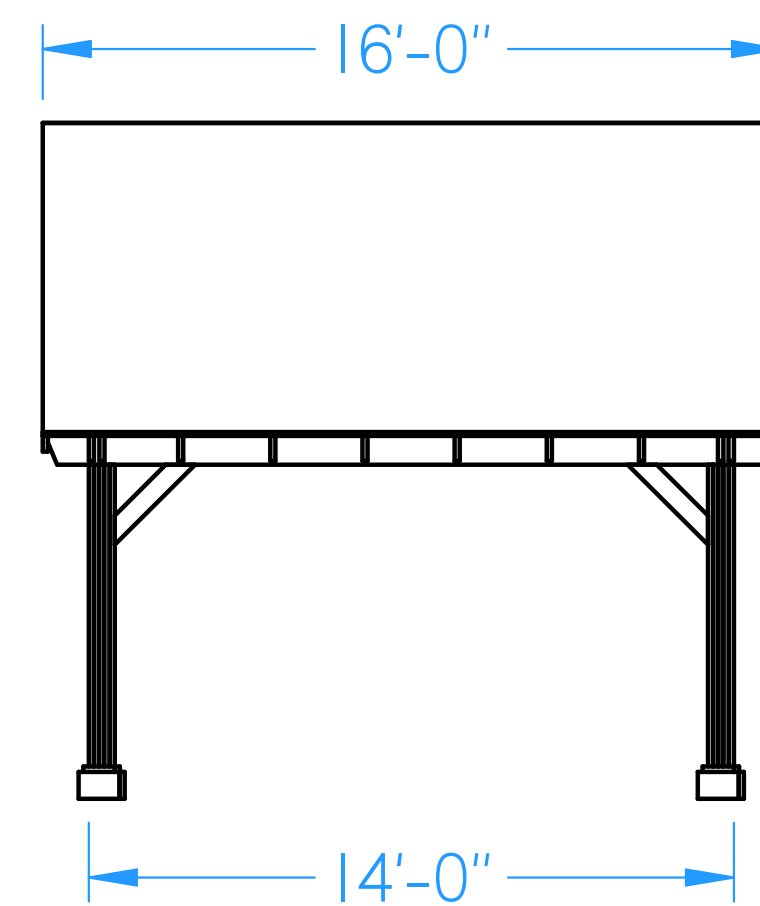




FLOOR PLAN



END ELEVATION



SIDE ELEVATION

Design Complies with Ohio Residential Code 2019 and The Ohio Building Code 2017  
 Structural Design Based On ASCE 7 - 10  
 Snow Load:  
 Ground Snow Load = 20 Psf  
 Snow Exposure Factor For Terrain Category B = 1.0  
 Unbalanced Snow Load, Does Not Apply  
 Roof LL = 20- psf  
 Roof DL = 10 psf

Wind Load:  
 Basic Wind Speed = 115 MPH  
 Wind Pressure For Exposure B Per Table  
 Importance Factor For Category II = 1.0

### SEISMIC DESIGN

S5 = 15  
 SI = 6  
 Site Class = D  
 Designed Using Simplified  
 Lateral Force Analysis  
 Procedures.  
 F = 1.0  
 Fa = 1.4  
 Sds = 1.0  
 R = 7

STRUCTURAL PLANS ONLY.  
 OTHERS RESPONSABLE FOR  
 MEETING ALL OTHER STATE AND  
 LOCAL REQUIREMENTS AND  
 REQUIRED SUBMITTAL

All materials,Treated Southern  
 Yellow Pine #2 or better grade  
 unless noted otherwise.

All fastners are Big Timber WTX  
 or BTX Construction screws at  
 length and diameter specified  
 W/ Coating approved for use in  
 Preservative Treated Wood  
 unless noted otherwise.

**BERLIN  
GARDENS**  
 TAKE LIFE OUTDOORS™

**VALLEY  
CITY SUPPLY**

**LASTING IMPRESSIONS**  
 LANDSCAPE & DESIGN

**Breckenridge Pavilion  
 18x14 W/ Ceiling**

DRAWN BY: marvin.s

DATE: 3/20/25

PROJECT:

Breckenridge  
 Pavilion 18x14.dft

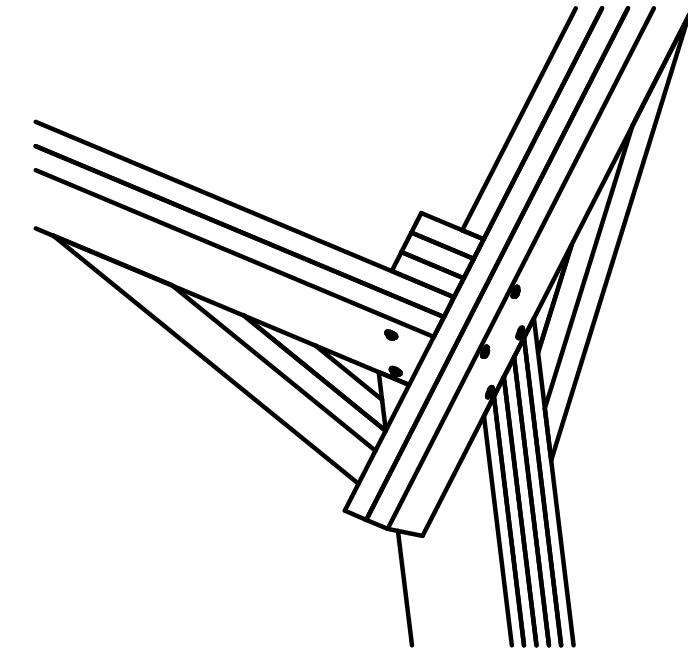
**Breckenridge Pavilion  
18x14 W/ Ceiling**

DRAWN BY: marvin.s

DATE: 3/20/25

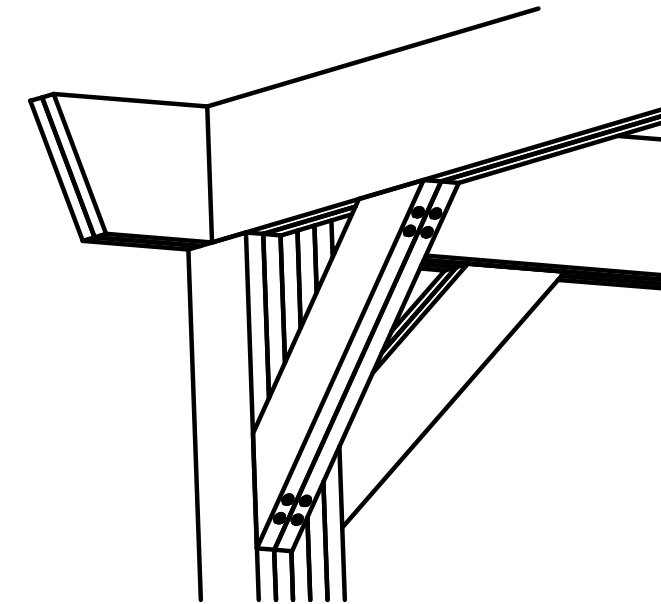
**PROJECT:**  
Breckenridge  
Pavilion 18x14.dft

Beams set on notched posts, Beams fastened to posts W/ 5/16" x 3 1/2" lags. (2) lags per front/back beam & (4) per side beam.



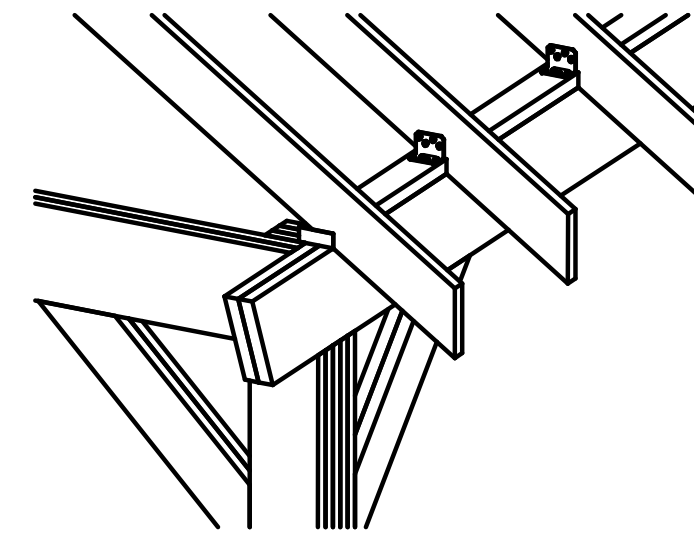
BEAM / POST CONNECTION

2 Ply 2x6 SYP Braces fastened W/ (2) 5/16 x 5" & (2) 5/16 x6" lags each end.



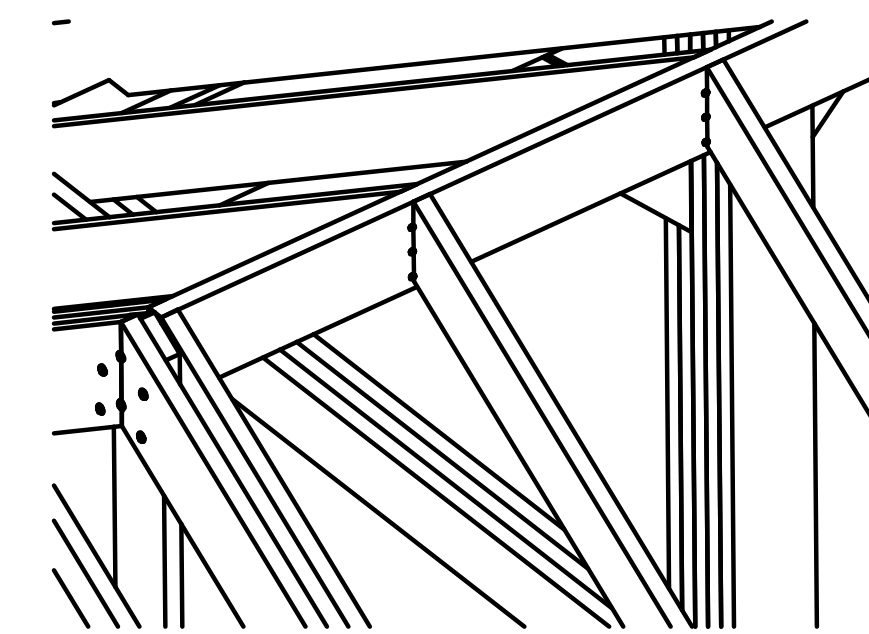
BRACE CONNECTION

2x4 Roof plate fastened to beams W/ #10x3" screws @ 24" O/C.  
Rafters fasted to roof plate W (1) Simpson A23 Bracket.  
Bracket fastened W/ #10x1 1.25" screws.



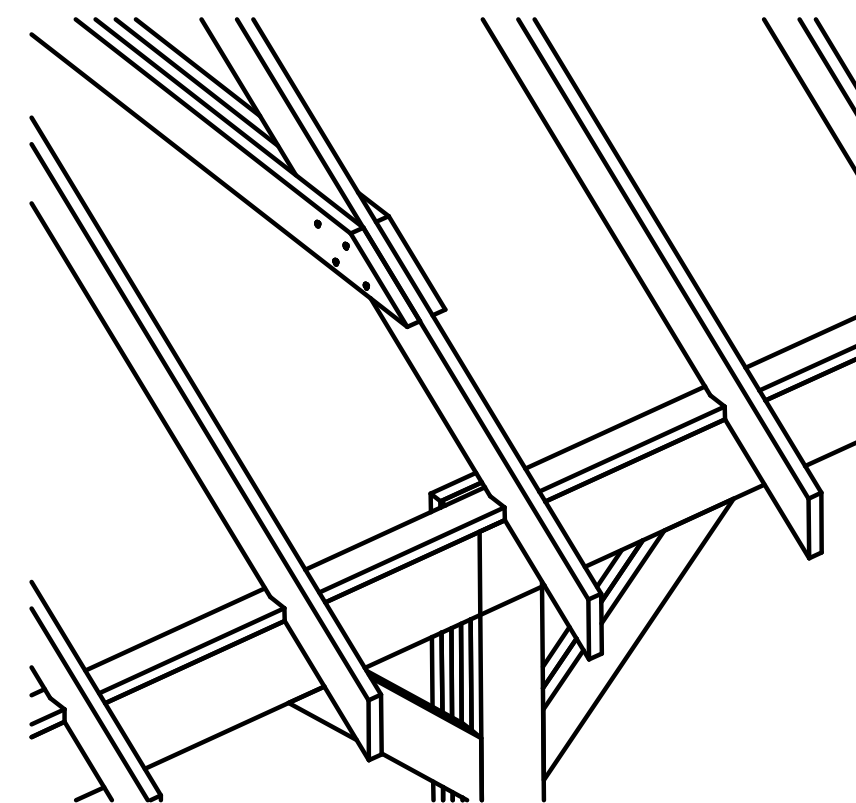
RAFTER / BEAM CONNECTION

End Rafters fastened to Ridge Beam W/ (2) 5/16 x 6" Lags.  
Common Rafters fastened to Ridge Beam W/ (3) #10 x 3" Screws per rafter.



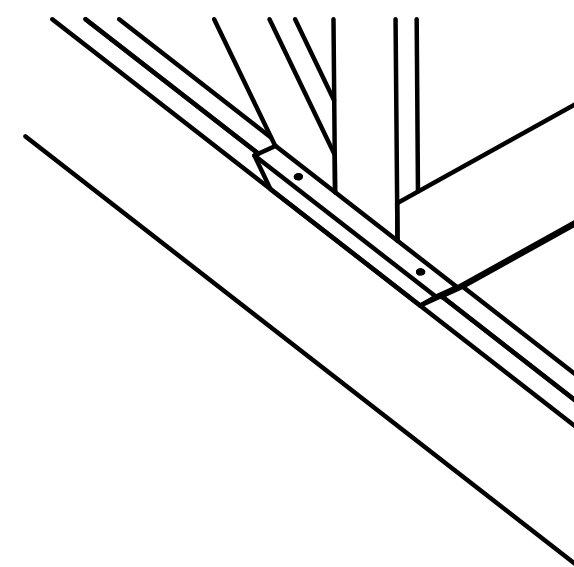
RAFTER / RIDGE BEAM CONNECTION

2x6 SYP Collar Ties fastened to Rafter W/ (4) #10 x 2 1/2" Screws each end.



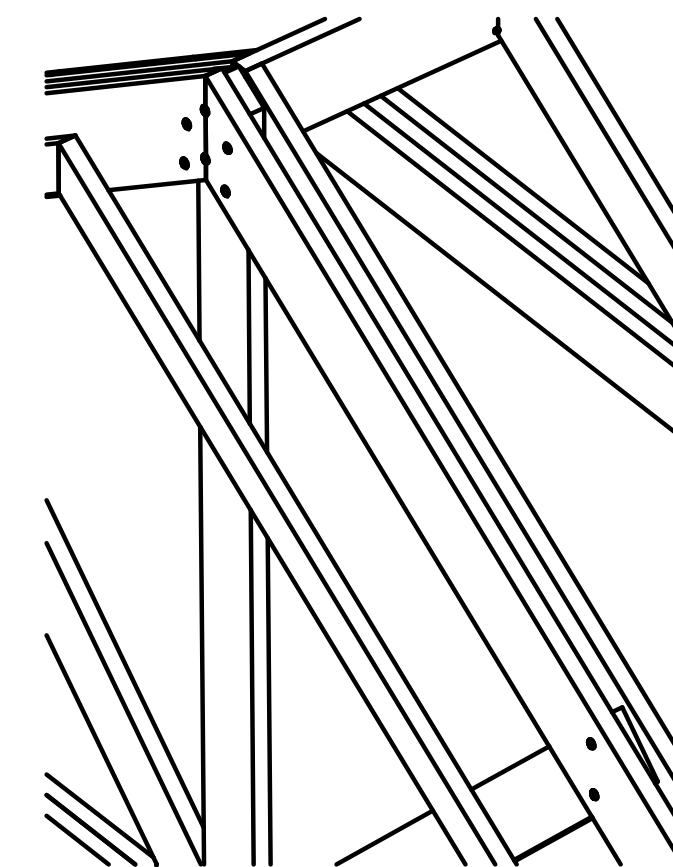
COLLAR TIE CONNECTION

2x2 SYP Block fastened to top of beam W/ (2) 5/16 x 4" Lags.  
Bracing attached to block W/ (2) #10 x 2 1/2" Screws per brace.



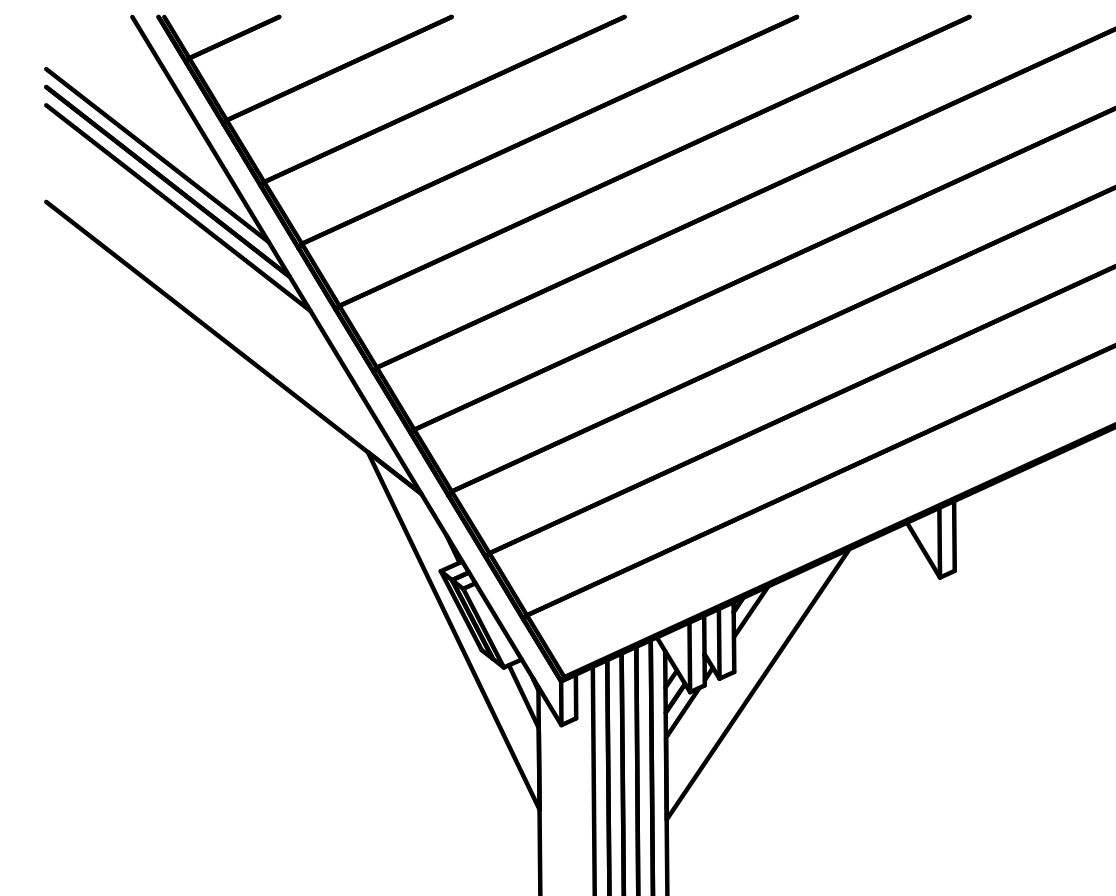
GABLE BRACING / BEAM CONNECTION

Gable bracing sandwiched between the 2x6 & 2x8 end rafter.  
Fastened W/ (2) 5/16 x 3 1/2" Lags each side.



GABLE BRACING / END RAFTER CONNECTION

1x6 SYP roof sheathing. Fastened W/ (2) 2" x 18GA 1/2" Crown staples per rafter.



ROOF SHEATHING CONNECTION

**GENERAL NOTES:**

- FT Synthetics underlayment on top of roof sheathing.
- 30 Yr. asphalt shingles or 29 GA. painted steel roofing.
- Optional 1x6 T&G ceiling can be installed.



Breckenridge Pavilion  
18x14 W/ Ceiling

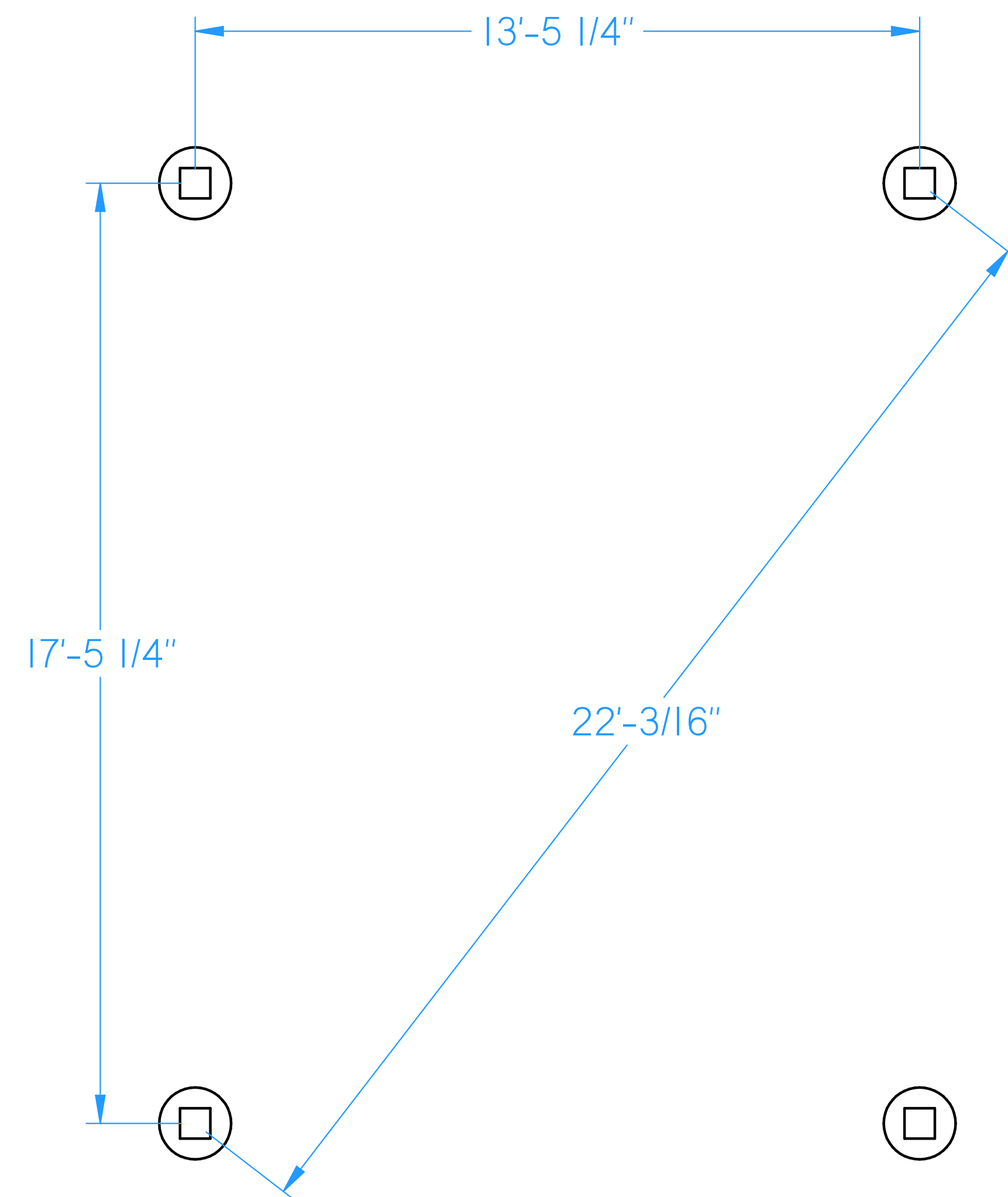
DRAWN BY: marvin.s

DATE: 3/20/25

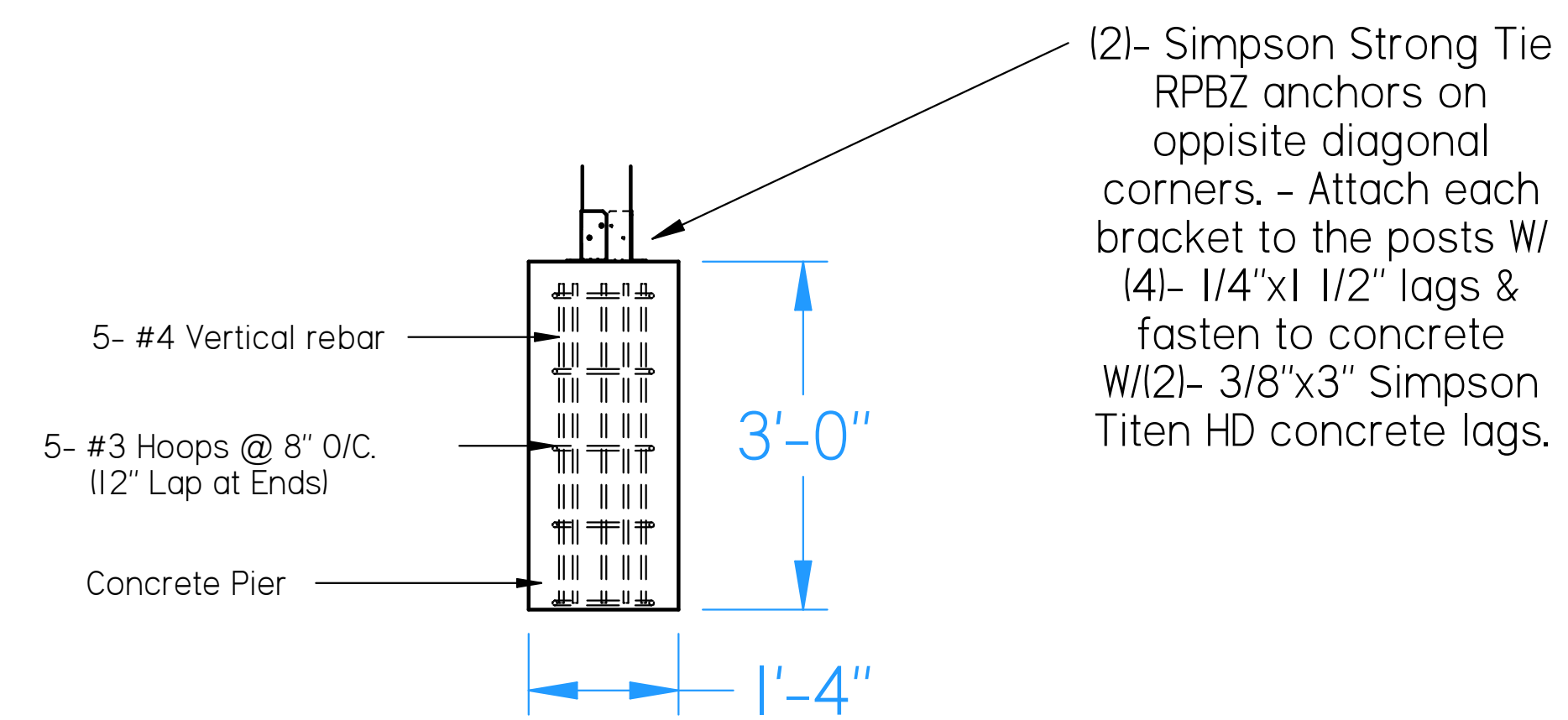
PROJECT:  
Breckenridge  
Pavilion 18x14.dft

FOUNDATION NOTES:

- Concrete - 4,000 psi W/  
5-7% Air Entertainment



FOOTER LAYOUT



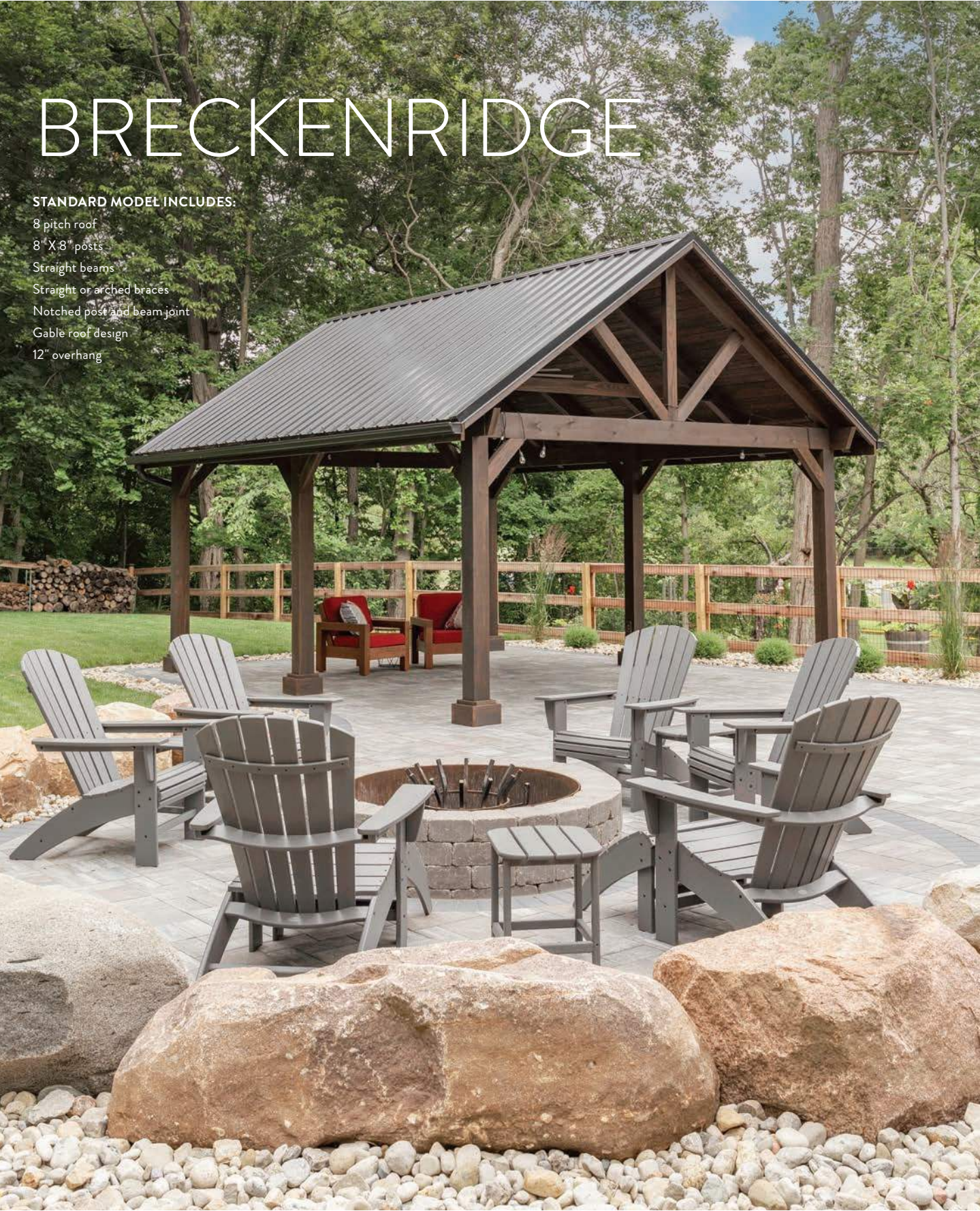
CONCRETE FOOTER DETAIL



# BRECKENRIDGE

STANDARD MODEL INCLUDES:

- 8 pitch roof
- 8" X 8" posts
- Straight beams
- Straight or arched braces
- Notched post and beam joint
- Gable roof design
- 12" overhang



WITH ITS OPEN GABLE TRUSSES, THIS PAVILION MAXIMIZES THE BENEFITS OF BEING OUTDOORS WHILE KEEPING YOU UNDER SHELTER.



Shown with optional ceiling

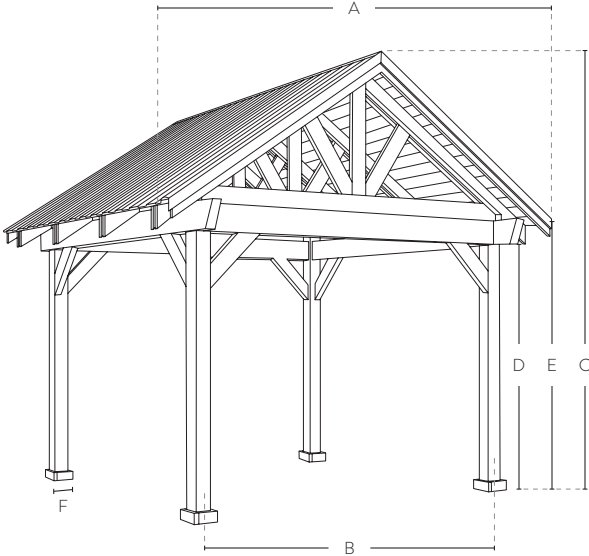


Triple Rafter

Specifications | Breckenridge Wood Pavilion

Please Note: Breckenridge Pavilions with sides of 20' and above will require additional posts.

Size	10'	12'	14'	16'	18'	20'	24'
A (Outside to outside of roof)	144"	168"	192"	216"	240"	264"	312"
B (Center to center of posts)	113"	137"	161"	185"	209"	233"	281"
C (Regular roof)	144"	152"	160"	168"	176"	183"	200"
D	Distance from bottom of post to bottom of beam is 87"						
E	Distance from bottom of post to top of beam is 96"						
F (Post base size)	8" X 8" Square: 12½" X 12½"						







## America's #1-selling shingle just got better — again

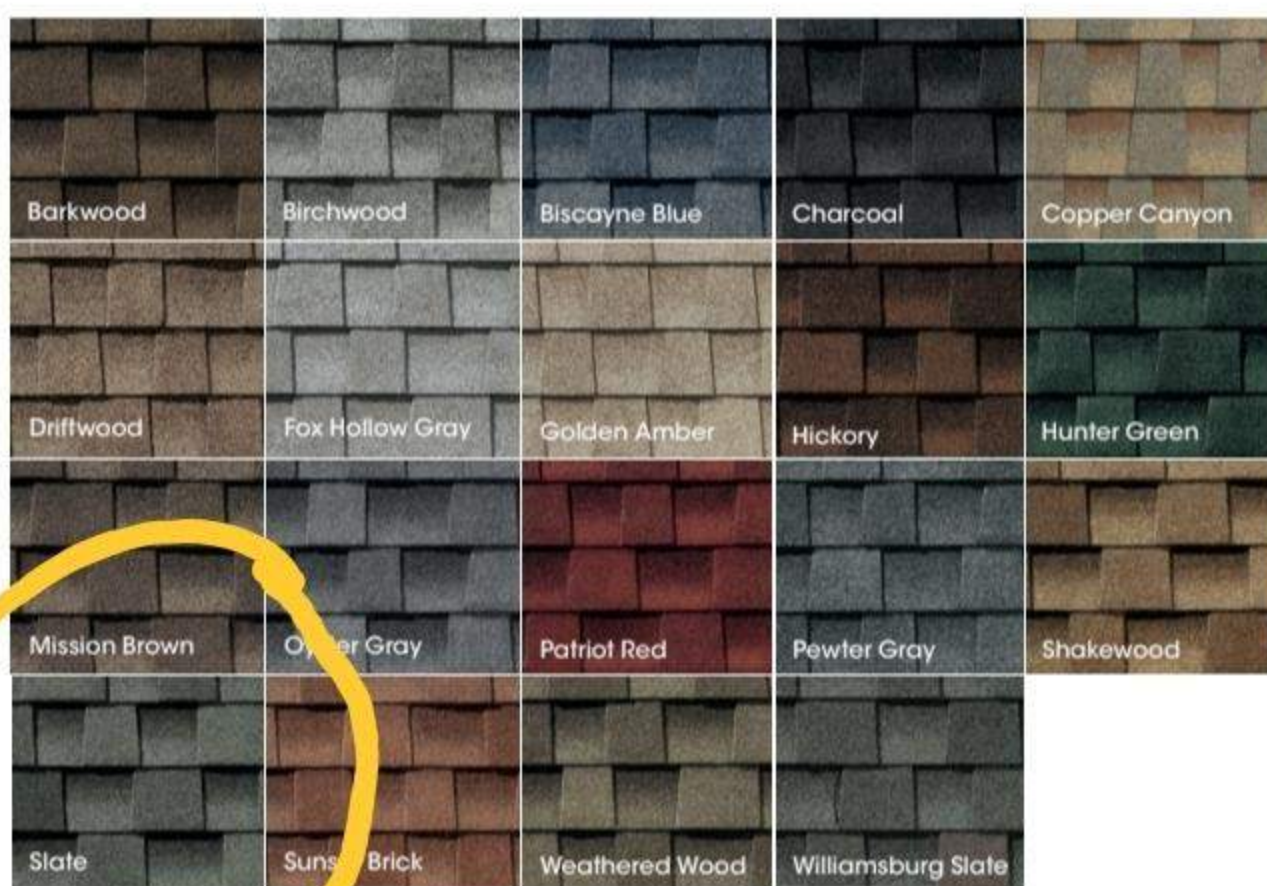
With GAF time-release algae-fighting technology and LayerLock® technology, Timberline HDZ® offers everything you can expect from an architectural shingle roof, and more.



### Benefits:

- **LayerLock® technology** — mechanically fuses the common bond between overlapping shingle layers
- **Up to 99.9% nailing accuracy** — the StrikeZone® nailing area is so easy to hit that a roofer placed 999 out of 1,000 nails correctly in our test<sup>1</sup>
- **WindProven™ Limited Wind Warranty** — when installed with the required combination of GAF accessories, Timberline HDZ® shingles are eligible for a wind warranty with no maximum wind speed limitation<sup>2</sup>
- **Dura Grip™** sealant pairs with the microgranule surface of the StrikeZone® nailing area, and an asphalt-to-asphalt monolithic bond cures for durability, strength, and exceptional wind-uplift performance
- **25-year StainGuard Plus™ Algae Protection Limited Warranty** against blue-green algae discoloration.<sup>3</sup> Proprietary GAF time-release algae-fighting technology helps protect your shingles from unsightly stains.
- **For the best look** — use TimberTex® premium ridge cap shingles or TimberCrest® premium SBS-modified ridge cap shingles

### Colors:



### Harvest Blend Colors<sup>5</sup>



### Product details:

#### Product/System Specifics

- Fiberglass asphalt construction
- **Dimensions (approx.):** 13 1/4" x 39 3/8" (337 mm x 1,000 mm)
- **Exposure:** 5 5/8" (143 mm)
- **Bundles/Square:** 3
- **Pieces/Square:** 64
- **StainGuard Plus™ Algae Protection Limited Warranty<sup>3</sup>**
- **Hip/Ridge:** TimberTex®; TimberCrest®; Seal-A-Ridge®; Z®Ridge; Ridglass®<sup>4</sup>
- **Starter:** Pro-Start®; QuickStart®; WeatherBlocker™

#### Applicable Standards & Protocols:

- Passes UL 2218 Impact-Resistance Test with Class 3 rating
- UL Listed to ANSI/UL 790 Class A
- State of Florida Approved
- Classified by UL in accordance with ICC-ES AC438
- Meets ASTM D7158, Class H
- Meets ASTM D3161, Class F
- Meets ASTM D3018 Type 1
- Meets ASTM D3462<sup>5</sup>
- Miami-Dade County Product Control Approved
- ICC-ES Evaluation Reports ESR-1475 and ESR-3267
- Meets Texas Department of Insurance Requirements
- Rated by the CRRC; Can be used to comply with Title 24 Cool Roof Requirements (some colors)

<sup>1</sup> Lifetime refers to the length of warranty coverage provided and means as long as the original individual owner(s) of a single-family detached residence (or eligible second owner(s)) owns the property where the qualifying GAF products are installed. For other owners/structures, Lifetime coverage is not applicable. Lifetime coverage on shingles requires the use of GAF Lifetime shingles only. See the *GAF Shingle & Accessory Limited Warranty* for complete coverage and restrictions. Visit [gaf.com/LRS](http://gaf.com/LRS) for qualifying GAF products. Lifetime coverage on shingles and accessories requires the use of any GAF Lifetime shingle and at least 3 qualifying GAF accessories. See the *GAF Roofing System Limited Warranty* for complete coverage and restrictions. For installations not eligible for the *GAF Roofing System Limited Warranty*, see the *GAF Shingle & Accessory Limited Warranty*. Visit [gaf.com/LRS](http://gaf.com/LRS) for qualifying GAF products.

<sup>2</sup> Results based on a study conducted by Home Innovation Research Labs, an independent research lab, comparing installation of Timberline HDZ® Shingles to Timberline HDZ® Shingles on a 16-square roof deck using standard 4-nail nailing pattern under controlled laboratory conditions. Actual results may vary.

<sup>3</sup> 15-year WindProven™ Limited Wind Warranty on GAF shingles with LayerLock® technology requires the use of GAF starter strips, roof deck protection, ridge cap shingles, and leak barrier or attic ventilation. See *GAF Roofing System Limited Warranty* for complete coverage and restrictions. Visit [gaf.com/LRS](http://gaf.com/LRS) for qualifying GAF products. For installations not eligible for the *GAF WindProven™ Limited Warranty*, see the *GAF Shingle & Accessory Limited Warranty*.

<sup>4</sup> 25-year StainGuard Plus™ Algae Protection Limited Warranty against blue-green algae discoloration is available only on products sold in packages bearing the StainGuard Plus™ logo. See *GAF Shingle & Accessory Limited Warranty* for complete coverage and restrictions and qualifying products.

<sup>5</sup> Harvest Blend colors are only available on TimberTex® Ridge Cap Shingles, Seal-A-Ridge® Ridge Cap Shingles, and TimberCrest® Premium SBS-Modified Ridge Cap Shingles.

<sup>6</sup> Periodically tested by independent and internal labs to ensure compliance with ASTM D3462 at time of manufacture.



**Note:** It is difficult to reproduce the color clarity and actual color blends of these products. Before selecting your color, please ask to see several full-size shingles.

We protect what matters most™







**TimberlineHDZ**  
High Definition® Lifetime® Shingles



GAF

**LAYERLOCK**  
TECHNOLOGY



## America's #1-selling shingle just got better — again

With GAF time-release algae-fighting technology and LayerLock® technology, Timberline HDZ® offers everything you can expect from an architectural shingle roof, and more.



### Benefits:

- **LayerLock® technology** — mechanically fuses the common bond between overlapping shingle layers
- **Up to 99.9% nailing accuracy** — the StrikeZone® nailing area is so easy to hit that a roofer placed 999 out of 1,000 nails correctly in our test<sup>1</sup>
- **WindProven™ Limited Wind Warranty** — when installed with
- **Dura Grip™** sealant pairs with the microgranule surface of the StrikeZone® nailing area, and an asphalt-to-asphalt monolithic bond cures for durability, strength, and exceptional wind-uplift performance
- **25-year StainGuard Plus™ Algae Protection Limited Warranty** against blue-green algae discoloration.<sup>3</sup> Proprietary GAF time-release algae-

### Product details:

- Product/System Specifics**
- Fiberglass asphalt composite shingles
  - **Dimensions (approx)** (337 mm x 1,000 mm)
  - **Exposure:** 5 5/8" (143 mm)
  - **Bundles/Square:** 3
  - **Pieces/Square:** 64
  - **StainGuard Plus™ Algae Protection Limited Warranty<sup>3</sup>**
  - **Hip/Ridge:** TimberTex™, Seal-A-Ridge®, Z®Ridge®, Ridgeglass®
  - **Starter:** Pro-Start®, QuickStart®, WeatherBlocker™
- Applicable Standards & Protocols:**

