



Front of the house. Replacing 1 window and front door.



Left side of the house. Replacing 1 window and side door.



Side door



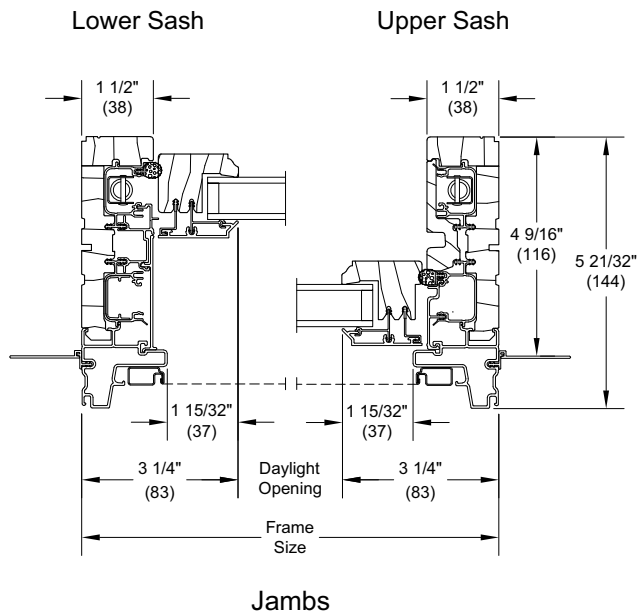
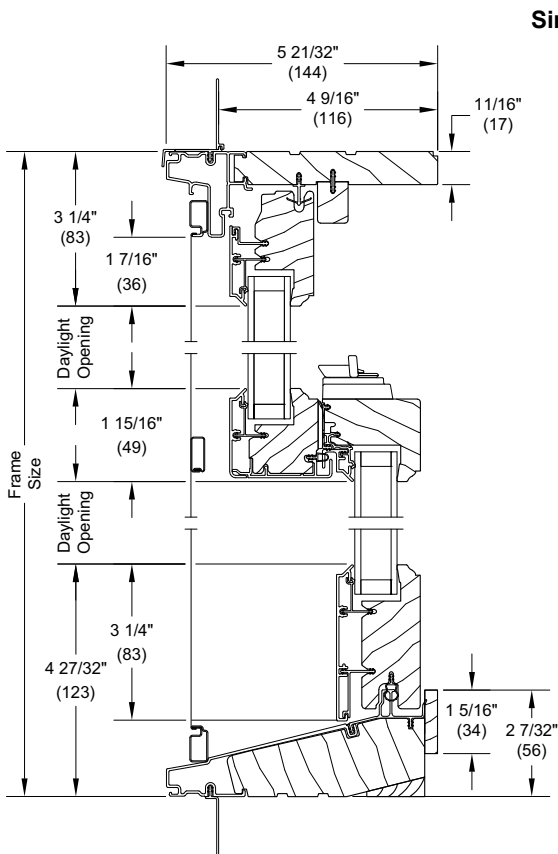
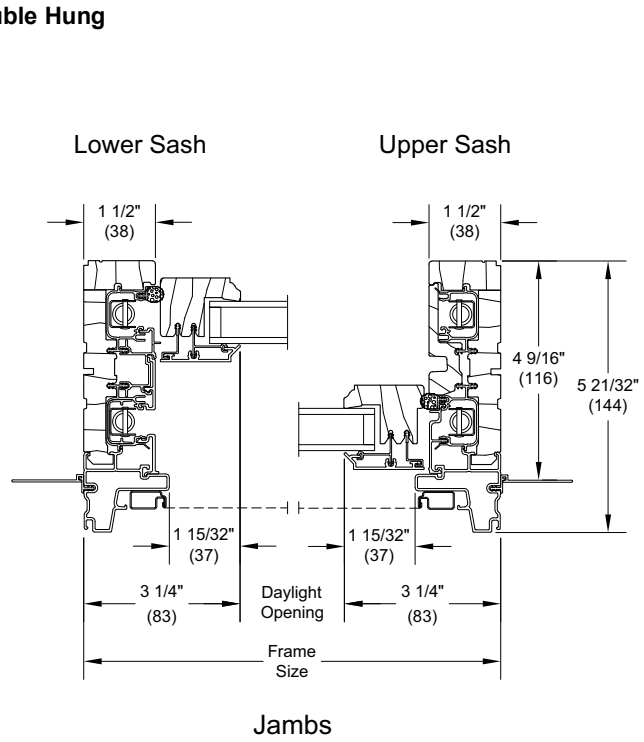
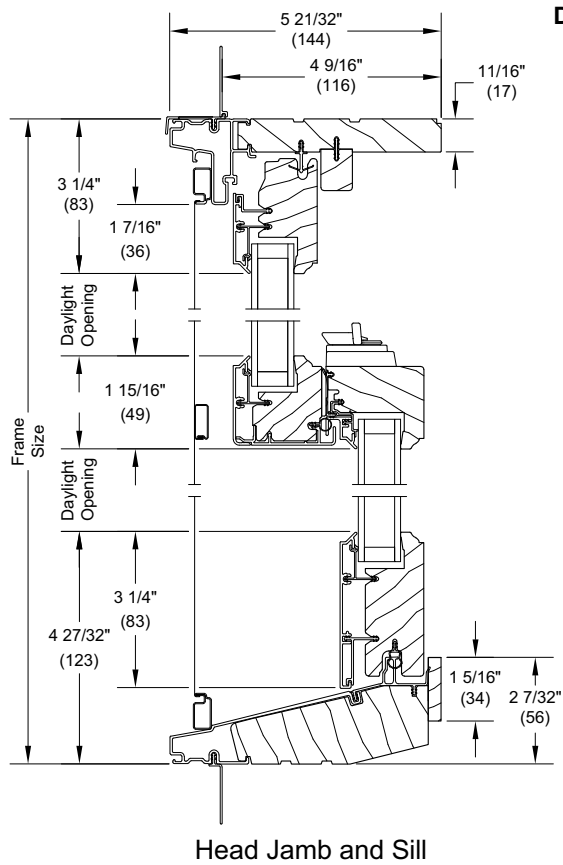
Back side of the house. Replacing 3 section window.

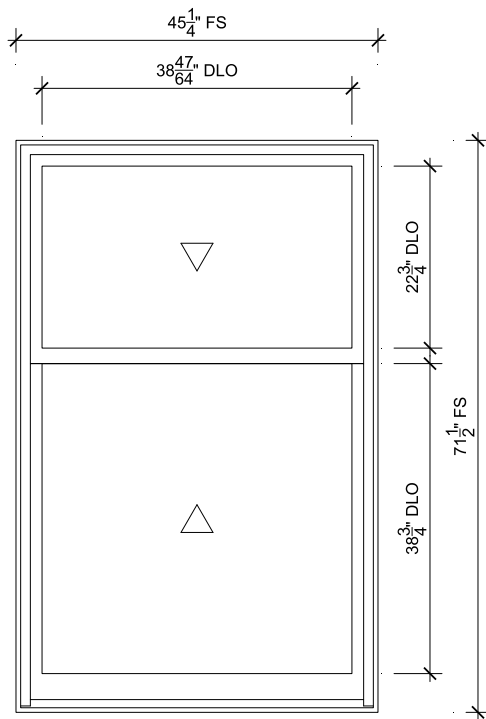


Right side of the house

Section Details: Operating

Scale: 3" = 1' 0"





LOWER FRONT

SCALE: 1/2" = 1'-0"

- 1
2 Head
- 2
2 Jamb
- 3
2 Sill
- 4
2 Checkrail

SPECIFICATIONS

Line #: 1

Qty: 1

Mark Unit: LOWER FRONT

Product Line: Ultimate

Unit Description: Double Hung G2

Frame Size: 45 1/4" X 71 1/2"

Exterior Finish: Stone White

Species: Pine

Interior Finish: Painted Interior Finish - White

Unit Type: Double Hung G2

Glass Information: IG, Low E2 w/Argon, Black

Divider Type: None

Hardware Type: Sash Lock, Sash Lift, No Finger Pull, Top Sash Limiter : None, Bottom

Sash Limiter : None

Screen Type: Extruded Aluminum Screen

Hardware Color: Matte Black

Screen Surround Color: Stone White

Jamb Depth: 4 9/16"



PROJ/JOB: 31 CHURCH ST. HUDSON / (1) FRONT LOWER HISTORIC

DIST/DEALER: CROOKED RIVER BUILDING SUPPLY

DRAWN: PATRICK MCENTEE

QUOTE#: RSS1A7P

PK VER: 0004.19.01

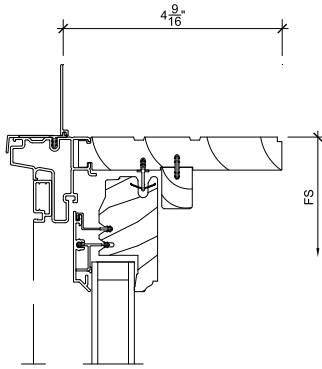
CREATED: 01/19/2026

REVISION:

SHEET

1

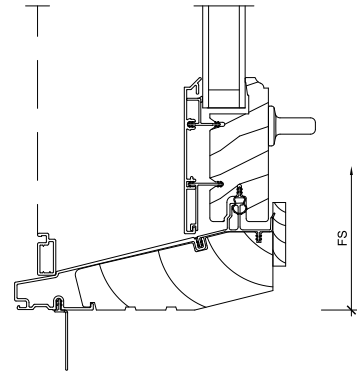
OF 2



1
2

Head

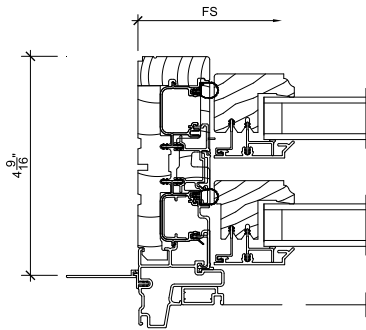
SCALE: 3" = 1'-0"



3
2

Sill

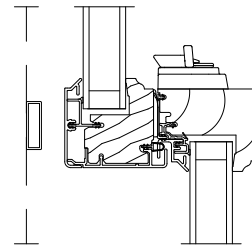
SCALE: 3" = 1'-0"



2
2

Jamb

SCALE: 3" = 1'-0"



4
2

Checkrail

SCALE: 3" = 1'-0"



PROJ/JOB: 31 CHURCH ST. HUDSON / (1) FRONT LOWER HISTORIC
 DIST/DEALER: CROOKED RIVER BUILDING SUPPLY
 DRAWN: PATRICK MCENTEE
 QUOTE#: RSS1A7P PK VER: 0004.19.01

CREATED: 01/19/2026 REVISION:

SHEET
2
OF 2

Section 08 52 13 Ultimate Double Hung G2

Part 1 General

1.1 Section Includes

- A. Ultimate Double Hung G2, Single Hung, Transom, Picture window complete with hardware, glazing, certified mulls, weather strip, insect screen, grilles-between-the-glass, simulated divided lite, jamb extension, combination storm/screen, and standard or specified anchors, trim, attachments, factory-applied historic casing(s) and accessories
- B. Ultimate Double Hung G2 Bay, Bow window complete with hardware, glazing, weather strip, insect screen, grilles-between-the-glass, simulated divided lite, jamb extension, combination storm/screen, head/seat board, and standard or specified anchors, trim attachments, and accessories

1.2 Related Sections

- A. Section 01 33 00 – Submittal Procedures; Shop Drawings, Product Data and Samples
- B. Section 01 62 00 – Product Options
- C. Section 01 65 00 – Product Delivery
- D. Section 01 66 00 – Storage and Handling Requirements
- E. Section 01 71 00 – Examination and Preparation
- F. Section 01 73 00 - Execution
- G. Section 01 74 00 – Cleaning and Waste Management
- H. Section 01 76 00 – Protecting Installed Construction
- I. Section 06 22 00 – Millwork: Wood trim other than furnished by window manufacturer
- J. Section 07 92 00 – Joint Sealant: Sill sealant and perimeter caulking
- K. Section 09 90 00 – Painting and Coasting: Paint and stain other than factory-applied finish

1.3 References

- A. American Society for Testing Materials (ASTM):
 - 1. E283: Standard Test method for Rate of Air Leakage through Exterior Windows, Curtain Walls and Doors
 - 2. E330: Standard Test Method for Structural Performance of Exterior Windows, Curtain Walls and Door by Uniform Static Air Pressure Difference

- 3. E547: Standard Test Method for Water Penetration of Exterior Windows, Curtain Walls and Doors by Cyclic Static Air Pressure Differential
- E2112: Standard Practice for Installation of Exterior Windows, Doors, and Skylights
- E2190: Specification for Sealed Insulated Glass Units
- C1036: Standard Specification for Flat Glass
- E2068: Standard Test Method for Determination of Operating Force of Sliding Windows and Doors
- E 1996: Standard Specification for Performance of Exterior Windows, Curtain Walls, Doors and Storm Shutters Impacted by Windborne Debris in Hurricanes

- 4. E 1886: Standard Test method for Performance of Exterior Windows, curtain Walls, and Storm Shutters Impacted by Missile(s) and Exposed to Cyclic Pressure Differentials

- 5. F 2090-17: Standard Specifications for Windows Fall Prevention Devices with Emergency Escape (egress) Release Mechanisms

- B. American Architectural Manufacturer's Association/Window and Door Manufacturer's Association (AAMA/WDMA/CSA):
 - 6. AAMA/WDMA/CSA 101/I.S.2/A440-08, Standard/Specification for windows, doors and skylights
 - 7. AAMA/WDMA/CSA 101/I.S.2/A440-11, Standard/Specification for windows, doors and skylights
 - 8. AAMA 450-10, Voluntary Performance Rating Method for Muller Fenestration Assemblies

- C. WDMA I.S.4: Industry Standard for Water Repellant Preservative Treatment for Millwork

- D. Window and Door Manufacturer's Association (WDMA): 101/I.S.2 WDMA Hallmark Certification Program

- E. Sealed Insulating Glass Manufacturer's Association/Insulating Glass Certification Council (SIGMA/IGCC)

- F. American Architectural Manufacturer's Association (AAMA): 2605: Voluntary Specification for High Performance Organic Coatings on Architectural Extrusions and Panels

- G. National Fenestration Rating Council (NFRC):
 - 9. 101: Procedure for Determining Fenestration Product thermal Properties
 - 10. 200: Procedure for Determining Solar Heat Gain Coefficients at Normal Incidence

- H. Window Covering Manufacturer's Association
 - 11. A100.1: American National Standard for Safety of Corded Window Coverings Products

1.5 Submittals

- A. Shop Drawings: Submit shop drawings under provision of Section 01 33 00.
- B. Product Data: Submit production data for certified options under provision of CSI MasterFormat Section 01 33 00. Product performance rating information may be provided via quote, performance rating summary (NFRC Data), or certified performance grade summary (WDMA Hallmark data).
- C. Samples:
 - 12. Submit corner section under provision of section 01 33 00.
 - 13. Specified performance and design requirements under provisions of CSI MasterFormat Section 01 33 00.

1.6 Quality Assurance

- A. Requirements: consult local code for IBC [International Building Code] and IRC [International Residential Code] adoption year and pertinent revisions for information on:
 - 14. Egress, emergency escape and rescue requirements
 - 15. Basement window requirements
 - 16. Windows fall prevention and/or window opening control device requirements

1.7 Delivery

- A. Comply with provisions of Section 01 65 00
- B. Deliver in original packaging and protect from weather

1.8 Storage and Handling

- A. Prime and seal wood surfaces, including to be concealed by wall construction, if more than thirty (30) days will expire between delivery and installation
- B. Store window units in an upright position in a clean and dry storage area above ground to protect from weather under provision of Section 01 66 00

1.9 Warranty

Complete and current warranty information is available at marvin.com/warranty. The following summary is subject to the terms, condition, limitations and exclusions set forth in the Marvin Windows and Door Limited Warranty and Products in Coastal Environments Limited Warranty Supplement:

- A. Clear insulating glass with stainless steel spacers is warranted against seal failure caused by manufacturing defects and resulting in visible obstruction through the glass for twenty (20) years from the original date of purchase. Glass is warranted against stress cracks caused by manufacturing defects from ten (10) years from the original date of purchase.
- B. Standard exterior aluminum cladding finish is warranted against manufacturing defects resulting in chalk, fade and loss of adhesion (peel) per the American Architectural Manufacturer's Association (AAMA) Specification 2605-11 Section 8.4 and 8.9 for twenty (20) years from the original date of purchase.
- C. Factory-applied interior finish is warranted to be free from finish defects for a period of five (5) years from the original date of purchase.
- D. Hardware and other non-glass components are warranted to be free from manufacturing defects for ten (10) years from the original date of purchase.

Part 2 Products

2.1 Manufactured Units

- A. Description: Ultimate Double Hung G2 (and related stationary units) as manufactured by Marvin, Warroad, Minnesota.
 - 17. Available in 3, 4, 5, and 6 wide assemblies
 - 18. 6 degree angle
 - 19. With and w/out head and seat board
- B. Description: Ultimate Double Hung G2 Bow unit, (and related stationary units) as manufactured by Marvin Windows and Door, Warroad, Minnesota.
 - 20. Available 30 degree, 45 degree, and 90 degree
 - 21. With and w/out head and seat board
- C. Description: Ultimate Double Hung G2 Bay Assemblies as manufactured by Marvin, Warroad, Minnesota.
 - 20. Available 30 degree, 45 degree, and 90 degree
 - 21. With and w/out head and seat board

2.2 Frame Description

- A. Interior: Non Finger-Jointed Pine or finger-jointed core with non finger-jointed Pine veneer; optional non finger-jointed Douglas Fir or finger-jointed core with non finger-jointed Douglas Fir veneer; optional non finger-jointed White Oak or finger-jointed with non finger-jointed Oak veneer; non finger-jointed Cherry or finger-jointed core with Cherry veneer; non finger-jointed Mahogany or finger-jointed core with non finger-jointed Mahogany veneer; non finger-jointed Vertical Grain Douglas Fir or finger-jointed with non finger-jointed Vertical Grain Douglas Fir veneer
 - 22. Kiln-dried to moisture content no greater than 12 percent at the time of fabrication
 - 23. Water repellent, preservative treated in accordance with ANSI/WDMA I.S.4.
- B. Frame exterior aluminum clad with 0.050" (1.3mm) thick extruded aluminum
- C. Frame thickness: 1 1/16" (17mm) head and jambs
- D. Frame depth: Frame depth had an overall 5 21/32" jamb (144mm). 4 9/16" (116mm) jamb depth from the nailing fin plane to the interior face of the frame for new construction.
- E. Sill assembly including the sill liner: 2 7/32" (56mm)
- F. Factory-applied historic profile extrusion

2.3 Sash Description

- A. Interior: Non Finger-Jointed Pine or finger-jointed core with non finger-jointed Pine veneer; optional non finger-jointed Douglas Fir or finger-jointed core with non finger-jointed Douglas Fir veneer; optional non finger-jointed White Oak or finger-jointed with non finger-jointed Oak veneer; non finger-jointed Cherry or finger-jointed core with Cherry veneer; non finger-jointed Mahogany or finger-jointed core with non finger-jointed Mahogany veneer; non finger-jointed Vertical Grain Douglas Fir or finger-jointed with non finger-jointed Vertical Grain Douglas Fir veneer
 - 24. Kiln-dried to moisture content no greater than 12 percent at the time of fabrication
 - 25. Water repellent preservative treated with accordance with WDMA I.S.4.
- B. Sash exterior aluminum clad with 0.050" (1.3mm) thick extruded aluminum
- C. Sash thickness: 1 3/4" (44mm). Corner slot and tenoned.
- D. Operable sash tilt to interior for cleaning or removal
- E. Sash Options:
 - a. Standard: Equal Sash
 - b. Optional:
 - i. Unequal Sash
 - ii. Both Sash Stationary

F. Exterior Cope Profile: Putty

G. Interior Sash Sticking

26. Standard: Ogee

27. Optional: Square

2.4 Glazing

A. Select quality complying with ASTM C1036. Insulating glass SIGMA/IGCC certified to performance level CBA when tested in accordance with ASTM E2190.

B. Glazing method: Insulating glass

C. Glazing seal: Silicone bedding on interior and exterior

D. Glass fill: Air with capillary tubes, Argon

E. Glass Type: Clear, Bronze, Gray, Reflective Bronze, Tempered, Obscure, Laminated, Low E2 with or without Argon, Low E3 with or without Argon, Low E1, Low E2/ERS, Low E3/ERS

F. Triple-Pane Glass (TG): Triple-Pane Low E1, Triple-Pane Low E2, Triple-Pane Low E3.

2.5 Certified Mulling

A. Directional mull limits: 1 High (can be 2 or more units wide in an assembly)

28. Max mullion span is 71 ½" (1816mm); max tributary width 45 ¼" (1149mm)

29. CUDH NG 2.0 to CUDH NG 2.0 only

30. Certified to Design Pressure 50

B. Directional mull limits: 1 Wide (can be 2 or more units high in an assembly)

31. Max mullion span is 69 ¼" (1759mm); max tributary height 53 19/32" (1361mm)

32. CUDH NG 2.0 over CUDH NG 2.0 only

33. Certified to Design Pressure 50

C. Multiple Wide x Multiple High assemblies with 1" LVL

34. Max mullion span is 75 11/16" (1922mm); max tributary width is 45 1/4" (1149mm)

35. LVL must be in vertical mull

36. Certified to Design Pressure 50

D. Multiple Wide x Multiple High assemblies with 3/8" (10mm) MRF

37. Max mullion span is 83 11/16" (2125mm); max tributary width 45 1/4" (1149mm)

- 38. UDH NG 2.0 over UDH NG 2.0 only
- 39. Certified to Design Pressure 65
- E. If any units have a lower design pressure the entire assembly will have the lowest design pressure of any unit or mull in the assembly.

2.6 Finish

- A. Exterior: Aluminum clad. Fluoropolymer modified acrylic topcoat over a primer. Meets AAMA 2605 requirements.
 - 40. Aluminum clad color options: Bahama Brown, Bronze, Cadet Gray, Cascade Blue, Cashmere, Clay, Coconut Cream, Ebony, Evergreen, Gunmetal, Hampton Sage, Pebble Gray, Sierra White, Stone White, Suede, Wineberry, Bright Silver (pearlescent), Copper (pearlescent), Liberty Bronze (pearlescent)
 - 41. Custom colors: Contact your Marvin representative
- B. Interior Finish options:
 - 42. Prime: Factory-applied water-borne acrylic primer. Meets WDMA TM-11 requirements.
 - 43. Painted Interior Finish. Factory-applied water-borne acrylic enamel. Available on Pine product only. Available in White or Designer Black. Meets WDMA TM-14 requirements.
 - 44. Factory-applied water-borne acrylic enamel clear coat. Applied in two separate coats with light sanding between coats. Available on Pine, Mahogany, Mixed Grain Douglas Fir, Vertical Grain Douglas Fir, Cherry, or White Oak. Meets WDMA TM-14 requirements.
 - 45. Factory-applied water-borne urethane stain. Stain applied over a wood (stain) conditioner. A water-borne acrylic enamel clear coat applied in two separate coats, with light sanding between coats, applied over the stain. Available on Pine, Mahogany Mixed Grain Douglas Fir, Vertical Grain Douglas Fir, Cherry, or White Oak. Colors available: Wheat, Honey, Hazelnut, Leather, Cabernet, and Espresso. Meets WDMA TM-14 requirements.

2.7 Hardware

- A. Locking system that provides locking, unlocking, balancing, and tilting of the sash members
- B. Lock Actuator Assembly
 - 46. Material
 - Zinc die-cast
 - Available finishes: Satin Taupe, White, Bronze, Matte Black, Brass, Antique Brass, Polished Chrome, Satin Chrome, Oil Rubbed Bronze, Satin Nickel, or Unlacquered Brass
 - 47. Design Feature and Components

To unlock unit, turn the handle 135°

Lock automatically locks when both sash are closed.

To tilt the bottom sash for wash mode, the bottom sash must be unlocked and raised a few inches; push the button on top of the lock handle and rotate the handle 180°

To tilt the top sash for wash mode, the bottom sash must be tilted and/or removed from the frame; lower the top sash to a good working height, retract the tilt latches on the top rail and tilt sash inward out of the frame

Custodial hardware colors: Satin Taupe, White, Bronze, Matte Black

C. Bottom Rail Lock Actuator Assembly - Lift Lock (Optional for Single Hung)

48. Material

- a. Zinc die-cast
- b. Available finishes: Satin Taupe, White, Bronze, Matte Black, Brass, Antique Brass, Polished Chrome, Satin Chrome, Oil Rubbed Bronze, Satin Nickel,

1. Design Feature and Components

- a. Does not contain Check Rail Lock Actuator Assembly or Strike Assembly
- b. Available in Traditional and Contemporary designs
- c. To unlock unit, lift the lock
- d. Lock automatically locks when bottom sash is closed.
- e. To tilt the bottom sash for wash mode, raise the bottom sash and manually retract the latches.
- f. Custodial hardware colors (available with traditional design): Satin Taupe, White, Bronze, Matte Black

D. Latches

49. Bottom sash latch

50. Material

- i. Bolt: Glass-filled nylon
- ii. Latch housing: Acetal
- iii. Sash latch reinforcement: Stainless steel

51. Top sash tilt latch

a. Material

- i. Bolt: Glass-filled nylon

- ii. Latch housing: Glass-filled nylon
- 52. Latches accommodate travel of sash in frame, and tilting into wash-mode
- 53. Color: Beige (manual latch for Lift Lock also available in White and Black)
- E. Strike Assembly
 - 54. Material
 - Zinc die-cast strike plate and injection-molded Acetal housing and button
 - Available finishes: Satin Taupe, White, Bronze, Matte Black, Brass, Antique Brass, Polished Chrome, Satin Chrome, Oil Rubbed Bronze, Satin Nickel, or Unlacquered Brass
 - 55. Strike assembly accommodates locking/unlocking
- F. Balance System (balance system determined by sash weight)
 - 56. Block & tackle balances
 - 57. Hybrid spiral balances
- G. Factory-applied Window Opening Control Device (WOCD) is a sash limiter that prevents the window opening more than 4" vertically. It meets ASTM F2090-17 specifications for window fall prevention standards. The system consists of two single action devices that allows for egress (when applied to an egress size window) by bypassing the 4" stop feature.
 - 58. Material
 - 59. WOCD device: zinc die-cast
 - 60. WOCD strike plate: nylon
 - 61. 2 WOCD's applied to each double and single hung window and will be recessed into the stiles of the top sash
 - 62. Default color matches lock handle
 - 63. Strike plate mounted to the bottom sash check rail
 - 64. Strike plate color to match weather strip
- H. Sash Limiter
 - 65. Bottom Sash Limiter (Acetal)
 - 66. Available on all operator configurations, and IZ3
 - Selectable bottom sash locations, 4", 6" or 8" Net Clear Opening (NCO)
 - Non-tilt hardware is default, and a sash removal tool is required in order to bypass the Sash limiter for sash removal (tilt wash mode)

Standard application is factory applied. Available for field retrofit applications.

Color: Will align with the Exterior Weather Strip Package selection

67. Top Sash Limiter (Extruded PVC)

Available on all operator configurations, with the exception of Single Hung configurations. This includes IZ3

Standard application is factory applied. Available for field applications

Color: Will align with the Interior Weather Strip Package selection

2.8 Weather Strip

A. Operating units:

68. Jambs: Foam-filled bulb

69. Header: Continuous dual leaf

70. Bottom rail and check rail: Hollow bulb

B. Stationary units:

71. Jambs: Foam for picture units; foam-filled bulb for transom unit

72. Header and bottom rail: Hollow bulb

2.9 Jamb Extension

A. Jamb extensions are available for various wall thickness factory-applied up to a 14" (356mm) wide

B. Finish: Match interior frame finish

2.10 Head/Seat Board (For use with Bow and Bay units)

A. Factory-installed (head board) (seat board) for wall thickness indicated or required

B. Finish: Match interior finish

2.11 Insect Screen

A. Factory-installed full or half screen. Half screen covers sash opening.

73. Screen Mesh: Marvin Bright View™

74. Optional Screen mesh: Charcoal Aluminum Wire, Black Aluminum Wire, Bright Bronze Aluminum Wire, Bright Aluminum Wire

B. Screen Frame

75. Window frame height less than or equal to 54 ½" Aluminum Screen Frame. Option: Extruded Aluminum Screen Frame.

76. Window frame height greater than 54 ½" Extruded Screen Frame. Option: None.

C. Aluminum frame finish:

77. Color: Matches exterior aluminum clad color

2.12 Combination Storm Sash and Screen

A. Frame: Exterior extruded aluminum 0.050" (1.3mm) thick

B. Finish: Fluoropolymer modified acrylic topcoat applied over Fluoropolymer primer. Meets AAMA 2605 requirements

78. Finish: Stone White, Bahama Brown, Bronze, Pebble Gray

C. Hardware: Spring loaded locking pins to hold movable storm panel in position. Heavy metal clips to lock upper and lower storm panels together

D. Weather strip: Dual durometer weather strip on center cross rail seals against operating panel in closed position

E. Storm panel: Select quality glass in aluminum frame

79. Frame finish: Standard color: Stone White, Bahama Brown, Bronze, Pebble Gray

F. Insect screen panel:

80. Extruded aluminum surround

81. Screen mesh: Standard is Charcoal Aluminum Wire; Optional Marvin Bright View™.

82. Aluminum frame finish: Bronze, White

2.13 Simulated Divided Lites (SDL)

A. 5/8" (16mm) wide, 7/8" (22mm) wide, 1 1/8" (29mm) wide, 1 3/4" (44mm) wide, 1 15/16" (49mm) wide, 2 13/32" (61mm) wide with or w/out internal spacer bar

B. Exterior muntins: 0.050" (1.3mm) thick extruded aluminum

C. Interior muntins: Pine, Mixed Grain Douglas Fir, White Oak, Cherry, Mahogany Vertical Grain Douglas Fir

D. Muntins adhere to glass with closed-cell copolymer acrylic foam tape

E. Exterior sticking: Putty

- F. Interior Sticking:
 - 83. Standard: Ogee
 - 84. Optional: Square
- G. Patterns: Rectangular, diamond, custom lite cut
- H. Finish – exterior matches exterior aluminum clad colors, interior matches interior wood species and color

2.14 Grilles-Between-the-Glass (GBG)

- A. 23/32" (18mm) contoured aluminum bar
 - 85. Exterior Colors: Exterior matches exterior aluminum clad colors. The exterior GBG color is designed to best match the Marvin aluminum clad color when used with Low E glass. The use of different types of glazing may alter the exterior GBG color appearance
 - 86. Interior Colors: White is the default color. Optional colors: Bronze, Pebble Gray, Sierra, White
- B. Optional flat aluminum spacer bar. Contact your Marvin representative.
- C. Pattern: Rectangular, Cottage, Custom lite layout

2.15 Accessories and Trim

- A. Installation Accessories:
 - 87. Factory-installed vinyl nailing/drip cap
 - 88. Installation brackets: 6 3/8" (162mm), 9 3/8" (283mm), 15 3/8" (390mm)
 - 89. Masonry brackets: 6" (152mm), 10" (254mm)
- B. Aluminum Extrusions:
 - 90. Casing Profile: Brick Mould Casing (BMC), Flat Casing, Columbus Casing, Grayson Casing, Ridgeland Casing, Stratton Casing, Thorton Casing, Potter Casing
 - 91. Aluminum clad Extrusion: Frame Expander, Jamb Extender, Mullion Cover, Mullion Expander, Subsill, Subsill End Cap and Lineal Cap
 - 92. Finish: Fluoropolymer modified acrylic topcoat applied over primer. Meets AAMA 2605 requirements
 - 93. Available in all exterior aluminum clad colors
- C. Historic casing, factory-applied profiles: Ridgeland, Flat, BMC, Custom
 - a. Subsills factory-applied

D. Exterior Sash Lugs – Standard Option

94. Standard Profile: Ogee

95. Available on Top Sash

96. Color: Available in all exterior clad color options

Color shall be the same as top sash clad color

97. Standard application is factory applied. Available for field applications

2.16 Lock Status Sensor (Optional)

A. Lock Status Sensor

1. Unit is factory-prepared for an integrated lock status sensor system. Sensor and Magnet mounted inside the boundaries of the overall frame size. Refer to **Lock Status Sensor Installation Instructions**.
2. Lock Status Sensor may be wired or wireless.
 - a. For wired option, check with local codes on potential contractor requirements for low voltage networking connections.
 - b. Wireless option available. Requires purchase of secondary transmitter for operation. Marvin will prep for this option.
3. For CUDH-NG 2.0 products, the sensor will always be located on the right-hand side of the check rail (from the exterior) for the bottom sash. For the top sash, the sensor will be located in the header parting stop of the frame on the right side (from the exterior).
4. Actuator (magnet) for the sensor will be located on the stile for the top sash. For the bottom sash, it will be integrated into the locking hardware on the same side as the sensor.

B. Lock Status Sensor Option Includes:

1. Sensor - Reed
2. Actuator – Neodymium Magnet
3. Actuator Cover (Casement and Double Only)
 - a. Colors: Black: Bare, stain and designer black; White: PIF-White and Prime

Part 3 Execution

3.1 Examination

- A. Verification of Condition: Before installation, verify openings are plumb, square and of proper dimensions as required in Section 01 71 00. Report frame defects or unsuitable conditions to the General contractor before proceeding.
- B. Acceptance of Condition: Beginning on installation confirms acceptance of existing conditions.

3.2 Installation

- A. Comply with Section 01 73 00.
- B. Assemble and install window/door unit(s) according to manufacturer's instruction and reviewed shop drawing.
- C. Install sealant and related backing materials at perimeter of unit or assembly in accordance with Section 07 92 00 Joint Sealants.
- D. Install accessory items as required.
- E. Use finish nails to apply wood trim and mouldings.

3.3 Field Quality Control

- A. Remove visible labels and adhesive residue according to manufacturer's instruction.
- B. Unless otherwise specified, air leakage resistance tests shall be conducted at a uniform static pressure of 75 Pa (~1.57 psf). The maximum allowable rate of air leakage shall not exceed 2.3 L/sm² (~0.45 cfm/ft²).
- C. Unless otherwise specified, water penetration resistance testing shall be conducted per AAMA 502 and ASTM E1105 at 2/3 of the fenestration products design pressure (DP) rating using "Procedure B" – cyclic static air pressure difference. Water penetration shall be defined in accordance with the test method(s) applied.

3.4 Cleaning

- A. Remove visible labels and adhesive residue according to manufacturer's instruction.
- B. Leave windows and glass in a clean condition. Final cleaning as required in Section 01 74 00.

3.5 Protecting Installed Construction

- A. Comply with Section 07 76 00.

- B. Protecting windows from damage by chemicals, solvents, paint or other construction operations that may cause damage.

End of Section



Manufacturer Cost

26 Industrial Street Phone: (800) 570-8283
Warsaw, NY 14569 Fax: (585) 786-3888
www.upstatedoor.com

Quote Date	3/27/2026
Outside Sales Rep	Resurgence
Internal Sales Rep	Steve Skoczylas
Salesperson	Mark Murphy
Quote Number	1042833

UPSTATE DOOR

BILL TO:
Crooked River Building Supply
19106 Miles Rd
Warrensville Heights, OH 44128

SHIP TO:
Crooked River Building Supply
19106 Miles Rd
Warrensville Heights, OH 44128

Quote Name: Exterior
Project Name: Keselman

Confirm/ provide Ship To address. Please initial _____

Dear Mark Murphy,

Thank you for the opportunity to work with you on your next project. This proposal includes a summary of the items specified. Detailed drawings are required to place an order and should be requested after providing a purchase order.

The last page of this proposal must be approved with signature to proceed with the order and lead time will begin up to 2 days after approved documentation is received by Upstate Door. Detailed drawings that supplement this proposal must be signed on every page. An order acknowledgement will be sent to you to confirm your order within 3 business days. Lead time begins based on the processed order date, and not the date that the approval was submitted.

Please feel free to contact us with any questions. We value your business.

Thank you,
Steve Skoczylas

Lead Time: Within 13 weeks *from finalized order*.
Lead Time is production lead time. Please add 5 business days for delivery.
Delivery: Included to tailgate of truck for distribution by others.
Changes: Minimum of \$500 or 5% (whichever is higher) charge for changes after order is processed.
A quote from Upstate Door does not constitute acceptance of an order.
Payment: Customer agrees to pay terms indicated.
Customer agrees to pay a 2% finance charge on any unpaid balance remaining after invoice due date.

SUB-TOTAL:	
FREIGHT:	
SALES TAX:	
TOTAL:	

50% Deposit/Bal ACH B4
Delivery

- **All errors are subject to correction; estimate is valid for 7 days.
 - **Customer is responsible for verifying all information is correct before order is approved
 - **All orders are produced in accordance with Upstate's approved paperwork.
 - **Any changes to specs, door list or delivery address, must be noted on Upstate paperwork prior to sign off.
 - **Any claims for damaged or missing items must be submitted to Upstate within 5 days of delivery.
 - **Please see www.upstatedoor.com for complete warranty information. Warranty coverage is contingent upon full payment of the order.
- Upstate Door Inc. reserves the right to suspend or deny warranty claims, service, repair, replacement, or refunds for any product with an outstanding balance at the time a claim is submitted.
- **Products are scheduled to ship upon completion and customer agrees to pay balance of order when product is ready for delivery. If shipment is delayed beyond the stated lead time due to customer-related reasons, customer agrees to pay a storage fee of 2% of order value or \$250 per week (whichever is greater) will apply, beginning one week after the published end lead date.



UPSTATE DOOR

DESIGNED FOR DISTINCTION



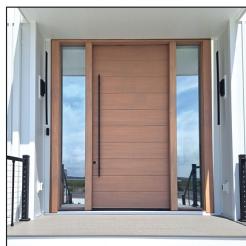
About Upstate Door

Upstate Door specializes in unique, one-of-a-kind fine door solutions. We are a hardwood door company that creates custom exterior, interior, and screen/storm doors. We build high-quality, hand-crafted doors that will last for years to come. Upstate Door works with you to build fine door solutions that are unique in every way. Built to your design specifications, our doors allow you to create a seamless flow of design throughout a home.

What Makes Us Different

Company Differentiators		Upstate Door		Other Wood Door Suppliers
Customization	✔	Can customize any aspect of the door	✘	Not always available
Ways to Communicate	✔	We will communicate face-to-face, over the phone, live chat, email, or virtually to assist any and all customer needs	✘	Difficult to access someone quickly and easily
Deliver on Own Trucks	✔	Deliver on our own fleet, reducing the risk of damage or shipping error. We also offer upgraded packaging options.	✘	Does not deliver on their own trucks or offer upgraded packaging options
Samples and High Quality Drawings	✔	We offer samples and high level drawings as part of the design process	✘	Samples typically not available, and low level drawings are received
Color & Grain Matching	✔	Lumber is hand selected and always matches color and grain	✘	Color and grain are inconsistent and do not match
Finishing Options	✔	Factory finishing is available. Split finishing can be done on the front vs. back, jambs can be finished differently than the door	✘	Factory finishing is unavailable
Mill and Hang Our Own Jambs	✔	Jambs are custom made from the same wood the door is made from	✘	Prefabricated, low quality jambs
Service Solutions	✔	Offering collaborative solutions before, during, and after the sale of a door package	✘	Difficult to access someone quickly and get knowledgeable answers & solutions

Have You Considered Us For...



Exterior Doors



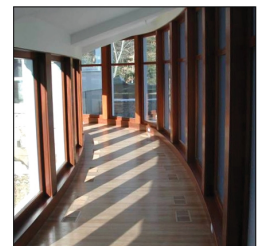
Interior Doors



Screen/Storm Doors



Specialty Doors



Architectural Windows

Exterior

1042833

SSkoczylas

4/7/2026 11:28:31 AM

Line #	Qty	Room	Unit	Jamb	Swing	Door	PH	PF	Total Price	Details
100-1	1	101 Prime	1.75" x 36" x 80"	1.25" x up to 6.875"	RHI					PG Accoya Custom Model EX Unit with Jamb
200-1	1	101 Prefinished Same Color	1.75" x 36" x 80"	1.25" x up to 6.875"	RHI					PG Accoya Custom Model EX Unit with Jamb
300-1	1	101 Prefinished Split Color	1.75" x 36" x 80"	1.25" x up to 6.875"	RHI					PG Accoya Custom Model EX Unit with Jamb
									Freight:	
									Subtotal:	
									Tax:	
									Total:	

Exterior

1042833

SSkoczylas

4/7/2026 11:28:32 AM

Line #	Description	Unit Price	Qty	Ext. Price
--------	-------------	------------	-----	------------

300-1 **Comment/Room:** 101 Prefinished Split Color
Frame Size: 37.5" X 82.5"
Door - Product: 1 @ 1.75" x 36" x 80" Distinctive Exterior Doors PG Accoya
Layout: Custom Model EX Square Top Door with Square Top Glass
Swing: RHI
Glass: 0.5625" Thick Insulated Clear Safety Glass Tempered Yes with Logo | Bronze Spacer And Grille
Glass Profile: SDL 0.875" M-OG-104 Ogee Muntin | S-OG-113 Ogee Sticking
Glass Layout: (4w x 1h lite layout)
Panel Profile: 1.5" Thick Extria P-SH-120 Raised Panel | S-OG-113 Ogee Sticking
Panel Layout: 4 Panel
Fitting Prep: Downsize and Bevel | Prefit in Jamb | 0.125" Prehang Reveal
Includes: Drip Cap |
Hanging Option: Prehung, Ship unit hung in assembled jambs
Jamb: 1.25" x up to 6.875" PG Accoya Double Rabbeted Jamb | Solid Wood Relief Cuts on Back of Jamb
Weatherstripping: Black Exterior Compression Weatherstripping
Door Bottom: Intek Sweep

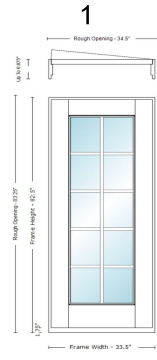
Sill: African Mahogany Nantucket Wood Sill | 1.75" Thick | Standard (Jamb Depth +2") | 6.00" Horns
Exterior Casing: N/A
Interior Casing: N/A
Mull Pocket:
Exterior Mull Covers: N/A
Interior Mull Covers: N/A
Hardware: Machine and Supply | 4" x 4"Hinges | Emtek 96414US15 | Ball Bearing | Satin Nickel | Square Corner | Brass Base | Qty (3) Total
Machining: Upstate to Machine and Supply | Standard Hinge Layout
Lockset Prep: Double Bore | No Face Bore (edge machining only) | No Upper Face Bore (edge machining only) | 2.75" Backset | 1" Edge Mortise | 36" from Bottom of Door to Center of Lower Bore | 41.5" from Bottom of Door to Center of Upper Bore
Includes: N/A
Door Non-Hinge Side Finishing Option: Klima Color Deluxe Top Coat - Sherwin Williams TBD
Door Hinge Side Finishing Option: Klima Color Deluxe Top Coat - Sherwin Williams Color not selected (custom colors not allowed)
Jamb Hinge Side Finishing Option:
Sill Finishing Option: Clear Coat Only

Special Instructions:



QUOTE NAME	QUOTE NUMBER	PRINTED BY	Printed On
Unassigned Quote	1042811	MMurphy1	4/7/2026 2:42:44 PM

Line #	Description	Unit Price	Qty	Ext. Price
100-1	<p>Comment/Room: Primed</p> <p>Frame Size: 33.5" X 82.5"</p> <p>Door - Product: 1 @ 1.75" x 32" x 80"</p> <p>Distinctive Exterior Doors PG Accoya</p> <p>Layout: D2000 EX Square Top Stile and Rail Sidelite</p> <p>Swing: RHI</p> <p>Glass: 0.5625" Thick Insulated Clear with Low E Safety Glass Tempered Bronze Spacer And Grille With Argon Gas</p> <p>Glass Profile: SDL 0.875" M-OG-104 Ogee Muntin S-OG-113 Ogee Sticking</p> <p>Glass Layout: (2w x 5h lite layout)</p> <p>Panel Profile: N/A</p> <p>Fitting Prep: Downsize and Bevel Prefit in Jamb 0.125" Prehang Reveal</p> <p>Includes: Drip Cap </p> <p>Hanging Option: Prehung, Ship unit hung in assembled jambs</p> <p>Jamb: 1.25" x up to 6.875" PG Accoya Double Rabbeted Jamb Solid Wood Relief Cuts on Back of Jamb</p> <p>Weatherstripping: Black Exterior Compression Weatherstripping</p> <p>Door Bottom: Intek Sweep</p>		1	
	<p>Sill: African Mahogany Nantucket Wood Sill 1.75" Thick Standard (Jamb Depth +2") 6.00" Horns</p> <p>Exterior Casing: N/A</p> <p>Interior Casing: N/A</p> <p>Mull Pocket:</p> <p>Exterior Mull Covers: N/A</p> <p>Interior Mull Covers: N/A</p> <p>Hardware: Machine and Supply 4" x 4" Hinges Emtek 96414US15 Ball Bearing Satin Nickel Square Corner Brass Base Qty (3) Total</p> <p>Machining: Upstate to Machine and Supply Standard Hinge Layout</p> <p>Lockset Prep: Double Bore No Face Bore (edge machining only) No Upper Face Bore (edge machining only) 2.75" Backset 1" Edge Mortise 36" from Bottom of Door to Center of Lower Bore 41.5" from Bottom of Door to Center of Upper Bore</p> <p>Includes: N/A</p> <p>Door Finishing Option: White Acrylic Primer, Sealed TOP AND BOTTOM EDGE ONLY with Upstate Green. Multiple Seal Coats Required in Field.</p> <p>Jamb Finishing Option: White Acrylic Primer, Multiple Seal Coats Required in Field.</p> <p>Sill Finishing Option: Clear Coat Only</p> <p>Special Instructions:</p>			



Lead Time: Within 13 weeks from finalized order.

Lead Time is production lead time. Please add 5 business days for delivery.

Delivery: Included to tailgate of truck for distribution by others.

Changes: Minimum of \$500 or 5% (whichever is higher) charge for changes after order is processed.

A quote from Upstate Door does not constitute acceptance of an order.

Payment: Customer agrees to pay terms indicated.

Customer agrees to pay a 2% finance charge on any unpaid balance remaining after invoice due date.

SUB-TOTAL:	
FREIGHT:	
SALES TAX:	
TOTAL:	

50% Deposit/Bal ACH B4
Delivery

**All errors are subject to correction; estimate is valid for 7 days.

**Customer is responsible for verifying all information is correct before order is approved

**All orders are produced in accordance with Upstate's approved paperwork.

**Any changes to specs, door list or delivery address, must be noted on Upstate paperwork prior to sign off.

**Any claims for damaged or missing items must be submitted to Upstate within 5 days of delivery.

**Please see www.upstatedoor.com for complete warranty information. Warranty coverage is contingent upon full payment of the order.

Upstate Door Inc. reserves the right to suspend or deny warranty claims, service, repair, replacement, or refunds for any product with an outstanding balance at the time a claim is submitted.

**Products are scheduled to ship upon completion and customer agrees to pay balance of order when product is ready for delivery. If shipment is delayed beyond the stated lead time due to customer-related reasons, customer agrees to pay a storage fee of 2% of order value or \$250 per week (whichever is greater) will apply, beginning one week after the published end lead date.

** Anything not specified, such as casing, locksets, or bores, are not included

** DO indicates "Doors Only" - NO machining, NO Hardware.

** Additional charges may apply upon arrival and inspection of customer supplied components (hinges, glass, etc.) at Upstate's facility. If components or specs are not received by Upstate, lead time will be delayed.

** There will be natural variations in wood color and grain that show when the finish is applied because different pieces of wood accept finish differently. Generally, veneer will finish different than solid lumber stock. This is viewed as part of the natural beauties of wood.

** Standard hinge layout is: 7" from top, 10 1/2" from bottom, middle hinge(s) evenly spaced between top and bottom hinges.

** Exterior units must have an overhang/awning above that extends 1/2 the distance of the entry height. Please see our warranty or ask your customer service representative for more information.

** Units must be finished or sealed within 1 week from delivery of the product. Please see our warranty or ask your customer service representative for more information.

** Upstate will follow the hinge manufacturer's stated and/or measured swag when machining for hinges to maintain proper reveals. This may cause hinges to be proud of jamb/door.

** Upstate Door reserves the right to apply Primed Steel hinges to units if hinges spec'd have yet to arrive to our facility. This is attributed to our vendor having longer lead times than our lead times stated to our customers. Should this occasion arise, back charges from our customer are null and void for the cost to remove the primed hinges and the installation of the proper hinges that are on back order.

** Upstate Door is not liable for any backordered hardware, glass, and/or wood parts that are supplied by another vendor. We reserve the right to ship our products without if it can be installed in the field or hold shipment if needed.

** Glass Note: All tempered glass is shipped with our glass vendors logo.

** In paint grade applications, composite materials may be utilized for wood substitutes at manufacturer discretion.

** At manufacturer's discretion, adjustable sills may be spliced at mull pockets.

** Checks in white oak are considered common characteristic of this species of wood and are not considered defects.

** Groove detail on centers are based on the door opening- the groove(s) closest to edge of door may vary up to 1/4" based on door being downsized and beveled.

**Circular hanger marks will be visible on top and bottom edges of all prefinished slabs – this includes clear coat, stain and clear coat, value package, deluxe package and color deluxe package.

** Tempered Glass contains a small logo in the corner of the pane. This is standard from the manufacturer.

** Upstate Door may allow any surplus silicone to remain on the glass surface to prevent interference with the glass seal, which could result in water infiltration.

** Effects of Delayed Finishing:

- Moisture Absorption: Extended exposure may lead to swelling, adhesion issues, or finish failure.
- Surface Contamination: Dust, dirt, and oils can compromise topcoat adhesion, requiring additional preparation.
- Primer Degradation: Over time, primer may develop a chalky or uneven texture, including an orange peel effect, affecting final finish quality.

** Prefinishing will add 2 weeks onto the stated lead time.

We appreciate the opportunity to provide you with this quote!



Klima Stain/Paint Match Confirmation Authorization

Customer Company Name: Crooked River Building Supply

Estimate Number: 1042833

Builder Name: _____

Stain/Paint Match Confirmation Authorization for Wood finish based on your viewing of physical sample, you have approved the following custom stain/paint color;

Formula: Semi Gloss (30 sheen)

- a. **Paint COLORS:** The customer will provide the name and color code from Upstate Door approved paint manufacturer for the paint chosen. That color will then be matched and must be completed prior to the order sign off.
- b. **Stain COLORS:** The customer may choose one of the standard stain colors offered by Upstate Door. The color must be chosen prior to the order sign off. As with any custom product, once the color is approved, it cannot be modified or changed without incurring additional expense, if approved by Upstate Door. Changes may not be made after the stain is applied. Our representative can help you with color choices if necessary. Custom stain color choices are not available.

DISCLAIMER: Stain samples are produced to be as accurate as possible. However, actual colors on your order may vary from these samples based on different lumber stock. Wood is a natural substance used for doors and trims and as such, will display its own unique characteristics. Wood has grains that will absorb stains at different amounts, depending on orientation of the grain, types of woods used and the moisture content of the wood. As a result, variation will occur throughout the wood. Upstate Door cannot be responsible for the actual degree of variation of stain color that may occur in your doors. In addition, National Standards shall determine the acceptability of the surface finishing, as defined by AWI Standard. Currently, those standards are defined as “when viewed without magnification, under normal lighting, from a normal viewing position at a distance of thirty-nine inches (1 meter). The finish will be smooth to the touch, with no foreign particles in the finish or roughness to the wood.”

Warranty: Please note that electing to utilize our Factory Finishing service may allow you to attain our 2 year Limited Warranty. Your Sales Representative will notify you if your order is eligible for the warranty based on specified order.



UPSTATE DOOR

DESIGNED FOR DISTINCTION



How to Order

1. Sign all pages of detailed drawings
2. Provide Ship To address on the first page of the proposal and confirm with your initials
3. Sign this page
4. Return the signed drawings and all pages of the approved and signed proposal

PROPOSAL APPROVAL AND TERMS & CONDITIONS ACKNOWLEDGMENT

By signing this Proposal from Upstate Door, Buyer expressly acknowledges and agrees that Buyer has carefully read and approves each page of this proposal in its entirety, without exception. Buyer approves the products and services quoted to be ordered at the stated cost. Any changes or revisions must be communicated to an Upstate Door representative prior to signing this Proposal. Buyer further acknowledges that all detailed drawings produced by Upstate Door that supplement and correspond with this proposal must be reviewed and signed on every page, without exception, at the same time as this proposal.

Buyer acknowledges that this order is for custom made-to-order Goods and agrees that the sale is governed exclusively by Seller's Terms & Conditions of Sale, which includes but is not limited to provisions regarding non-cancellation, non-returnability, payment obligations, warranty limitations, inspection, indemnification, limitation of remedies, and exclusive New York governing law and venue, including additional terms for the limited warranty of the Seller posted at:

[Upstate Door Warranty](#)

[Full Terms & Conditions](#)

Quote Number	1042833
Quote Name	Exterior
Quote Date	3/27/2026
Printed On	4/7/2026 11:28:32 AM
Purchase Order:	
Outside Sales Rep	Resurgence
Internal Sales Rep	Steve Skoczylas
Salesperson	Mark Murphy
Subtotal	
Tax	
Total	

Authorized Signature: _____

Print Name & Title: _____

Date: _____



All of our handcrafted doors & windows are shipped on our fleet of trucks from our facilities in New York & Massachusetts





Upstate Door Retail Quote

Quote Date	3/27/2026
Salesperson	Mark Murphy
Quote Number	1042811

UPSTATE DOOR

SOLD BY:
 Crooked River Building Supply
 19106 Miles Rd
 Warrensville Heights, OH 44128

SOLD TO:
 Keselman Group
 5188 Richmond Rd. Suite A
 Bedford Heights, OH 44146

Quote Name: Unassigned Quote
Project Name: Unassigned Project

Lead Time: Within 13 weeks *from finalized order*.
 Lead Time is production lead time. Please add 5 business days for delivery.
Delivery: Included to tailgate of truck for distribution by others.
Changes: Minimum of \$500 or 5% (whichever is higher)
 charge for changes after order is processed.
 A quote from Upstate Door does not constitute acceptance of an order.

SUB-TOTAL:	
FREIGHT:	
LABOR:	
SALES TAX:	
TOTAL:	

- **All errors are subject to correction; estimate is valid for 30 days.
- **Customer is responsible for verifying all information is correct before order is approved
- **All orders are produced in accordance with Upstate's approved paperwork.
- **Any changes to specs, door list or delivery address, must be noted on Upstate paperwork prior to sign off.
- **Any claims for damaged or missing items must be submitted to Upstate within 5 days of delivery.
- **Please see www.upstatedoor.com for complete warranty information. Warranty coverage is contingent upon full payment of the order. Upstate Door Inc. reserves the right to suspend or deny warranty claims, service, repair, replacement, or refunds for any product with an outstanding balance at the time a claim is submitted.
- **Products are scheduled to ship upon completion and customer agrees to pay balance of order when product is ready for delivery. If shipment is delayed beyond the stated lead time due to customer-related reasons, customer agrees to pay a storage fee of 2% of order value or \$250 per week (whichever is greater) will apply, beginning one week after the published end lead date.



UPSTATE DOOR

DESIGNED FOR DISTINCTION



About Upstate Door

Upstate Door specializes in unique, one-of-a-kind fine door solutions. We are a hardwood door company that creates custom exterior, interior, and screen/storm doors. We build high-quality, hand-crafted doors that will last for years to come. Upstate Door works with you to build fine door solutions that are unique in every way. Built to your design specifications, our doors allow you to create a seamless flow of design throughout a home.

What Makes Us Different

Company Differentiators		Upstate Door		Other Wood Door Suppliers
Customization	✓	Can customize any aspect of the door	✗	Not always available
Ways to Communicate	✓	We will communicate face-to-face, over the phone, live chat, email, or virtually to assist any and all customer needs	✗	Difficult to access someone quickly and easily
Deliver on Own Trucks	✓	Deliver on our own fleet, reducing the risk of damage or shipping error. We also offer upgraded packaging options.	✗	Does not deliver on their own trucks or offer upgraded packaging options
Samples and High Quality Drawings	✓	We offer samples and high level drawings as part of the design process	✗	Samples typically not available, and low level drawings are received
Color & Grain Matching	✓	Lumber is hand selected and always matches color and grain	✗	Color and grain are inconsistent and do not match
Finishing Options	✓	Factory finishing is available. Split finishing can be done on the front vs. back, jambs can be finished differently than the door	✗	Factory finishing is unavailable
Mill and Hang Our Own Jambs	✓	Jambs are custom made from the same wood the door is made from	✗	Prefabricated, low quality jambs
Service Solutions	✓	Offering collaborative solutions before, during, and after the sale of a door package	✗	Difficult to access someone quickly and get knowledgeable answers & solutions

Have You Considered Us For...



Exterior Doors



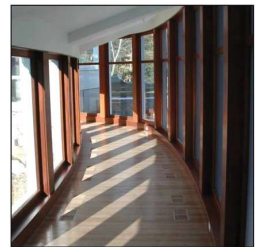
Interior Doors



Screen/Storm Doors



Specialty Doors



Architectural Windows

QUOTE NAME	QUOTE NUMBER	PRINTED BY	Printed On
Unassigned Quote	1042811	MMurphy1	4/7/2026 2:42:44 PM

QUOTE NAME	QUOTE NUMBER	PRINTED BY	Printed On
Unassigned Quote	1042811	MMurphy1	4/7/2026 2:42:44 PM

Line #	Qty	Room	Unit	Jamb	Swing	Door	PH	PF	Total Price	Details
100-1	1	Primed	1.75" x 32" x 80"	1.25" x up to 6.875"	RHI					PG Accoya D2000 EX Uni with Jamb
200-1	1	Single Color	1.75" x 32" x 80"	1.25" x up to 6.875"	RHI					PG Accoya D2000 EX Uni with Jamb
300-1	1	Dual Color	1.75" x 32" x 80"	1.25" x up to 6.875"	RHI					PG Accoya D2000 EX Uni with Jamb
									Freight:	
									Subtotal:	
									Tax:	
									Total:	

Lead Time: Within 13 weeks *from finalized order*.

Lead Time is production lead time. Please add 5 business days for delivery.

Delivery: Included to tailgate of truck for distribution by others.

Changes: Minimum of \$500 or 5% (whichever is higher)

charge for changes after order is processed.

A quote from Upstate Door does not constitute acceptance of an order.

SUB-TOTAL:	
FREIGHT:	
LABOR:	
SALES TAX:	
TOTAL:	

**All errors are subject to correction; estimate is valid for 30 days.

**Customer is responsible for verifying all information is correct before order is approved

**All orders are produced in accordance with Upstate's approved paperwork.

**Any changes to specs, door list or delivery address, must be noted on Upstate paperwork prior to sign off.

**Any claims for damaged or missing items must be submitted to Upstate within 5 days of delivery.

**Please see www.upstatedoor.com for complete warranty information. Warranty coverage is contingent upon full payment of the order. Upstate Door Inc. reserves the right to suspend or deny warranty claims, service, repair, replacement, or refunds for any product with an outstanding balance at the time a claim is submitted.

**Products are scheduled to ship upon completion and customer agrees to pay balance of order when product is ready for delivery. If shipment is delayed beyond the stated lead time due to customer-related reasons, customer agrees to pay a storage fee of 2% of order value or \$250 per week (whichever is greater) will apply, beginning one week after the published end lead date.

** Anything not specified, such as casing, locksets, or bores, are not included

** DO indicates "Doors Only" - NO machining, NO Hardware.

** Additional charges may apply upon arrival and inspection of customer supplied components (hinges, glass, etc.) at Upstate facility. If components or specs are not received by Upstate, lead time will be delayed.

** There will be natural variations in wood color and grain that show when the finish is applied because different pieces of wood accept finish differently. Generally, veneer will finish different than solid lumber stock. This is viewed as part of the natural beauties of wood.

** Standard hinge layout is: 7" from top, 10 1/2" from bottom, middle hinge(s) evenly spaced between top and bottom hinges.

** Exterior units must have an overhang/awning above that extends 1/2 the distance of the entry height. Please see our warranty or ask your customer service representative for more information.

** Units must be finished or sealed within 1 week from delivery of the product. Please see our warranty or ask your customer service representative for more information.

** Upstate will follow the hinge manufacturer's stated and/or measured swag when machining for hinges to maintain proper reveals. This may cause hinges to be proud of jamb/door.

** Upstate Door reserves the right to apply Primed Steel hinges to units if hinges spec'd have yet to arrive to our facility. This attributed to our vendor having longer lead times than our lead times stated to our customers. Should this occasion arise, charges from our customer are null and void for the cost to remove the primed hinges and the installation of the proper hinge that are on back order.

** Upstate Door is not liable for any backordered hardware, glass, and/or wood parts that are supplied by another vendor. We reserve the right to ship our products without if it can be installed in the field or hold shipment if needed.

** Glass Note: All tempered glass is shipped with our glass vendors logo.

** In paint grade applications, composite materials may be utilized for wood substitutes at manufacturer discretion.

** At manufacturer's discretion, adjustable sills may be spliced at mull pockets.

** Checks in white oak are considered common characteristic of this species of wood and are not considered defects.

** Groove detail on centers are based on the door opening- the groove(s) closest to edge of door may vary up to 1/4" based on door being downsized and beveled.

**Circular hanger marks will be visible on top and bottom edges of all prefinished slabs – this includes clear coat, stain and clear coat, value package, deluxe package and color deluxe package.

** Tempered Glass contains a small logo in the corner of the pane. This is standard from the manufacturer.

** Upstate Door may allow any surplus silicone to remain on the glass surface to prevent interference with the glass seal, which could result in water infiltration.

** Low E glass will produce a haze effect in direct sunlight. This is not considered a defect by glass suppliers of Low E.

** Effects of Delayed Finishing:

- Moisture Absorption: Extended exposure may lead to swelling, adhesion issues, or finish failure.
- Surface Contamination: Dust, dirt, and oils can compromise topcoat adhesion, requiring additional preparation.
- Primer Degradation: Over time, primer may develop a chalky or uneven texture, including an orange peel effect, affecting final finish quality.

** Prefinishing will add 2 weeks onto the stated lead time.

We appreciate the opportunity to provide you with this quote!

Warranty Disclaimer Form

Quote Number	1042811
--------------	---------

I understand by signing that while Upstate Door provides a warranty on most of its products, Upstate Door is a custom door manufacturer and will build doors outside warranty tolerances. The doors listed below have been built to requested specs and are outside warranty tolerance. They will have no foreseeable warranty and if any defects in workmanship are noted at delivery, Upstate Door must be contacted within 30 days of delivery to dealer with **no exceptions**. Items not mentioned on this form do not necessarily mean that they are covered under warranty- please confirm with your Project Coordinator.

Door Numbers That Are Warranty Exempt & Specs That Exceed Warranty Tolerance

Special Door Care recommendations

For information, view our **1 Year Warranty** <https://www.upstatedoor.com/index.cfm?Page=One-Year-Warranty> | **Two Year Warranty** <https://www.upstatedoor.com/index.cfm?Page=Two-Year-Warranty> | **Service Support** <https://www.upstatedoor.com/index.cfm?Page=Service-Support> | **Care and Handling** <https://www.upstatedoor.com/index.cfm?Page=Care-and-Handling>



Klima Stain/Paint Match Confirmation Authorization

Customer Company Name: Crooked River Building Supply

Estimate Number: 1042811

Builder Name: _____

Stain/Paint Match Confirmation Authorization for Wood finish based on your viewing of physical sample, you have approved the following custom stain/paint color;

Formula: Semi Gloss (30 sheen)

- a. **Paint COLORS:** The customer will provide the name and color code from Upstate Door approved paint manufacturer for the paint chosen. That color will then be matched and must be completed prior to the order sign off.
- b. **Stain COLORS:** The customer may choose one of the standard stain colors offered by Upstate Door. The color must be chosen prior to the order sign off. As with any custom product, once the color is approved, it cannot be modified or changed without incurring additional expense, if approved by Upstate Door. Changes may not be made after the stain is applied. Our representative can help you with color choices if necessary. Custom stain color choices are not available.

DISCLAIMER: Stain samples are produced to be as accurate as possible. However, actual colors on your order may vary from these samples based on different lumber stock. Wood is a natural substance used for doors and trims and as such, will display its own unique characteristics. Wood has grains that will absorb stains at different amounts, depending on orientation of the grain, types of woods used and the moisture content of the wood. As a result, variation will occur throughout the wood. Upstate Door cannot be responsible for the actual degree of variation of stain color that may occur in your doors. In addition, National Standards shall determine the acceptability of the surface finishing, as defined by AWI Standard. Currently, those standards are defined as “when viewed without magnification, under normal lighting, from a normal viewing position at a distance of thirty-nine inches (1 meter). The finish will be smooth to the touch, with no foreign particles in the finish or roughness to the wood.”

Warranty: Please note that electing to utilize our Factory Finishing service may allow you to attain our 2 year Limited Warranty. Your Sales Representative will notify you if your order is eligible for the warranty based on specified order.

Limited One-Year Warranty

Upstate Door Inc. (Upstate) strives to produce superior quality doors that are engineered and designed specifically for each individual customer. Our products are intended to stand the test of time under normal conditions and use with proper handling, installation, finishing and on-going care.

Subject to the terms and conditions contained in paragraphs (I) through (VI) below, Upstate warrants all of our products "for (1) year" from the original date of delivery of the product against: (a) defects in workmanship, (b) defects in materials and (c) door warping. In the event of a covered warranty claim, Upstate will, at our discretion: (a) repair the affected product; (b) replace the affected product in its original state of purchase; or (c) refund the purchase price of the original product. Call or Email

https://www.upstatedoor.com/contact_us.cfm our Custom Door Experts to assist you.

The full warranty that includes the detail of the points below is located on our website and can be viewed at:

<https://www.upstatedoor.com/index.cfm?Page=Upstate-Door-Warranty>

I. LIMITATIONS AND EXCLUSIONS

II. DOOR WARPING

III. VOIDING WARRANTY

IV. WARRANTY CLAIMS

V. EXPRESS LIMITATION

VI. DISCLOSURE